

DAMSON OIL CORPORATION

P. O. BOX 1845

LAKE CHARLES, LOUISIANA 70601

SUITE 401, MAGNOLIA LIFE BUILDING
1011 LAKESHORE DRIVE
(318) 436-9575

366 MADISON AVENUE
NEW YORK, NEW YORK 10017
(212) MU 7-5522

June 24, 1975

New Mexico Oil Conservation Commission
Box 2088
Sante Fe, New Mexico 87501

Dear Sir;

As operators with controlling working interest of Saltmount #2 well in Unit 0 of Section 21, T-23-S, R-37-E, we are requesting approval to commingle the Imperial Tubb Drinkard which is perforated from 6153' - 6243' and the Teague Blinebry which is perforated from 5356' - 5894' as stated in Statewide Order No. R-3458.

The Lower Zone has been off production since March, 1970. In a three day test of this zone, by means of swabbing, it has produced 25 Bbls. of crude oil a day with a gravity of 38.7 and 5 Bbls. of water. This zone has an estimated bottom hole pressure of 150 PSI and will not flow.

The Upper Zone is producing 3 Bbls. of crude oil a day with a gravity of 37.2 and no water with the help of a pumping unit. It also has an estimated bottom hole pressure of 150 PSI.

By commingling these two zones it will not devalue the oil and it will increase our production. We have notified Gulf Oil Company and Imperial American of our intentions to commingle these zones.

If any further information is needed, please contact us.

Very truly yours,

John F. Davies
John F. Davies
Production Foreman

Wash Bros Oil Co.

JFD/nas.

R-3458

Bottom perf 6243' - 6250'

*Upper Prod 3 BOPD = 1170
Lower " 25 BOPD = 9970
28*

**NEW MEXICO OIL CONSERVATION COMMISSION
GAS-OIL RATIO TESTS**

C-116
Revised 1-1-65

Operator Damson Exploration Corporation		Pool Imperial Tubb Drinkard		County Lea County												
Address P.O. Box 1845; Lake Charles, Louisiana 70601				TYPE OF TEST - (X)	Scheduled <input type="checkbox"/> Special <input type="checkbox"/>											
LEASE NAME	WELL NO.	LOCATION			DATE OF TEST	STATUS	CHOKE SIZE	TBG. PRESS.	DAILY ALLOW-ABLE	LENGTH OF TEST HOURS	PROD. DURING TEST			GAS - OIL RATIO CU.FT./BBL.		
		U	S	T							R	WATER BBLs.	GRAV. OIL		OIL BBLs.	GAS M.C.F.
Saltmount	2	0	21	23-S	37-E	6-11-75	5	Open	0	0	24	5	38.7	25	12.1	484/1

No well will be assigned an allowable greater than the amount of oil produced on the official test.

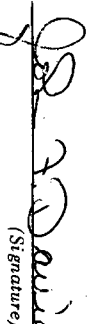
During gas-oil ratio test, each well shall be produced at a rate not exceeding the top unit allowable for the pool in which well is located by more than 25 percent. Operator is encouraged to take advantage of this 25 percent tolerance in order that well can be assigned increased allowables when authorized by the Commission.

Gas volumes must be reported in MCF measured at a pressure base of 15.025 psia and a temperature of 60° F. Specific gravity base will be 0.60.

Report casing pressure in lieu of tubing pressure for any well producing through casing.

Mail original and one copy of this report to the district office of the New Mexico Oil Conservation Commission in accordance with Rule 301 and appropriate pool rules.

I hereby certify that the above information is true and complete to the best of my knowledge and belief.


 (Signature)
Production Foreman
 (Title)
 6/24/75
 (Date)

Operator Damson Exploration Corporation		Pool Imperial Tubb Drinkard		County Lea County					
Address P.O. BOX 1845; Lake Charles, Louisiana 70601		TYPE OF TEST - (X)		Completion <input type="checkbox"/> Special <input type="checkbox"/>					
LEASE NAME	WELL NO.	LOCATION U S T R		DATE OF TEST	STATUS				
Saltmount	2	0	21	23-S 37-E	6-11-75				
						5	Open	0	0
CHOKESIZE	T.B.G. PRESS.	DAILY ALLOWABLE	LENGTH OF TEST HOURS	WATER BBLs.	GRV. OIL BBLs.				

Well will be assigned an allowable greater than the amount of oil produced on the official test.

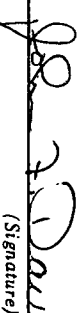
During gas-oil ratio test, each well shall be produced at a rate not exceeding the top unit allowable for the pool in which well is located by more than 25 percent. Operator is encouraged to take advantage of this 25 percent tolerance in order that well can be assigned increased allowables when authorized by the Commission.

Gas volumes must be reported in MCF measured at a pressure base of 15.025 psia and a temperature of 60° F. Specific gravity base will be 0.60.

Report casing pressure in lieu of tubing pressure for any well producing through casing.

Mail original and one copy of this report to the district office of the New Mexico Oil Conservation Commission in accordance with Rule 301 and appropriate pool rules.

I hereby certify that the above information is true and complete to the best of my knowledge and belief.


(Signature)
Production Foreman
6/24/75
(Date)

NEW MEXICO OIL CONSERVATION COMMISSION
GAS-OIL RATIO TESTS

C-116
Revised 1-1-65

Operator Damson Exploration Corporation		Pool Teague Blinebry		County Lea County										
Address P.O. Box 1845; Lake Charles, Louisiana 70601		TYPE OF TEST - (X)		Completion <input type="checkbox"/> Special <input type="checkbox"/>										
LEASE NAME	WELL NO.	LOCATION		DATE OF TEST	CHOKE SIZE	TBG. PRESS.	DAILY ALLOW-ABLE	LENGTH OF TEST HOURS	PROD. DURING TEST			GAS - OIL RATIO CU. FT./BBL.		
		U	S						T	R	WATER BBLs.		GRAV. OIL	OIL BBLs.
Saltmount	2	0	21	23-S 37-E	5-25-75	P Open	0	10	24	0	37.0	3	2.3	766/1

No well will be assigned an allowable greater than the amount of oil produced on the official test.

During gas-oil ratio test, each well shall be produced at a rate not exceeding the top unit allowable for the pool in which well is located by more than 25 percent. Operator is encouraged to take advantage of this 25 percent tolerance in order that well can be assigned increased allowables when authorized by the Commission.

Gas volumes must be reported in MCF measured at a pressure base of 15,025 psia and a temperature of 60° F. Specific gravity base will be 0.60.

Report casing pressure in lieu of tubing pressure for any well producing through casing.

Mail original and one copy of this report to the district office of the New Mexico Oil Conservation Commission in accordance with Rule 301 and appropriate pool rules.

I hereby certify that the above information is true and complete to the best of my knowledge and belief.

[Signature]
(Signature)
Production Foreman
(Title)
10/24/75
(Date)

Jameson Exploration Corporation		Pool		Teague Blinbry		County		Lea County							
30X 1845; Lake Charles, Louisiana 70601		TEST - (X)		Schedul		Completion		Special							
WELL NO.	LOCATION				DATE OF TEST	STATUS	CHOKE SIZE	TBG. PRESS.	DAILY ALLOW-ABLE	LENGTH OF TEST HOURS	PROD. DURING TEST				GAS - OIL RATIO CU. FT./BBL.
	U	S	T	R							WATER BBL.	GRAV. OIL	OIL BBL.	GAS M.C.F.	
2	0	21	23-S	37-E	5-25-75	P	Open	0	10	24	0	37.0	3	2.3	766/1
Saltmount															

No well will be assigned an allowable greater than the amount of oil produced on the official test.
During gas-oil ratio test, each well shall be produced at a rate not exceeding the top unit allowable for the pool in which well is located by more than 25 percent. Operator is encouraged to take advantage of this 25 percent tolerance in order that well can be assigned increased allowables when authorized by the Commission.
Gas volumes must be reported in MCF measured at a pressure base of 15.025 psia and a temperature of 60° F. Specific gravity base will be 0.60.

Report casing pressure in lieu of tubing pressure for any well producing through casing.
Mail original and one copy of this report to the district office of the New Mexico Oil Conservation Commission in accordance with Rule 301 and appropriate pool rules.

I hereby certify that the above information is true and complete to the best of my knowledge and belief.

[Signature]
(Signature)

Production Foreman

(Title)

6/24/75

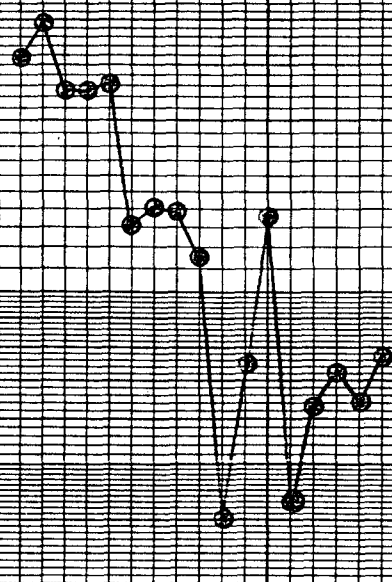
(Date)

MONTHLY OIL PRODUCTION

SALT MOUNT NO. 2
LAGUE Blinberry Zone
PERFORMANCES 5356' - 5894'

Note
Saltmount No. 2
Imperial Tub. DRINKAGE
Has Not Produced Since 1900
which was a total of
240 BBL.

DEC. 1900 JAN. 1901 FEB. 1901 MAR. 1901 APR. 1901 MAY 1901 JUN. 1901 JUL. 1901 AUG. 1901 SEP. 1901 OCT. 1901 NOV. 1901 DEC. 1901 JAN. 1902 FEB. 1902 MAR. 1902 APR. 1902 MAY 1902 JUN. 1902 JUL. 1902 AUG. 1902 SEP. 1902 OCT. 1902 NOV. 1902 DEC. 1902 JAN. 1903 FEB. 1903 MAR. 1903 APR. 1903 MAY 1903 JUN. 1903 JUL. 1903 AUG. 1903 SEP. 1903 OCT. 1903 NOV. 1903 DEC. 1903 JAN. 1904 FEB. 1904 MAR. 1904 APR. 1904 MAY 1904 JUN. 1904 JUL. 1904 AUG. 1904 SEP. 1904 OCT. 1904 NOV. 1904 DEC. 1904 JAN. 1905 FEB. 1905 MAR. 1905 APR. 1905 MAY 1905



OIL CONSERVATION COMMISSION
Hobbs DISTRICT

OIL CONSERVATION COMMISSION
BOX 2088
SANTA FE, NEW MEXICO

DATE June 30, 1975

RE: Proposed MC _____
Proposed DHC X _____
Proposed NSL _____
Proposed SWD _____
Proposed WFX _____
Proposed PMX _____



Gentlemen:

I have examined the application dated 6/27/75
for the Damson Exploration Corp. Saltmount #2-0 21-23-37
Operator Lease and Well No. Unit, S-T-R

and my recommendations are as follows:

O.K.---J.W.R.

Yours very truly,

John W. Runyan