

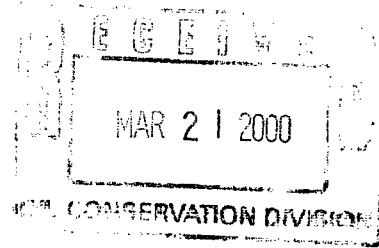
**JAMES BRUCE**

ATTORNEY AT LAW

POST OFFICE BOX 1056  
SANTA FE, NEW MEXICO 87504

3304 CAMINO LISA  
SANTA FE, NEW MEXICO 87501

(505) 982-2043  
(505) 982-2151 (FAX)



March 21, 2000

**Hand Delivered**


Michael E. Stogner  
Oil Conservation Division  
2040 South Pacheco Street  
Santa Fe, New Mexico 87505

Re: Kerr-McGee Oil & Gas Onshore LLC  
West Indian Basin Unit Well No. 5 unorthodox location  
§20-21S-23E, Eddy County

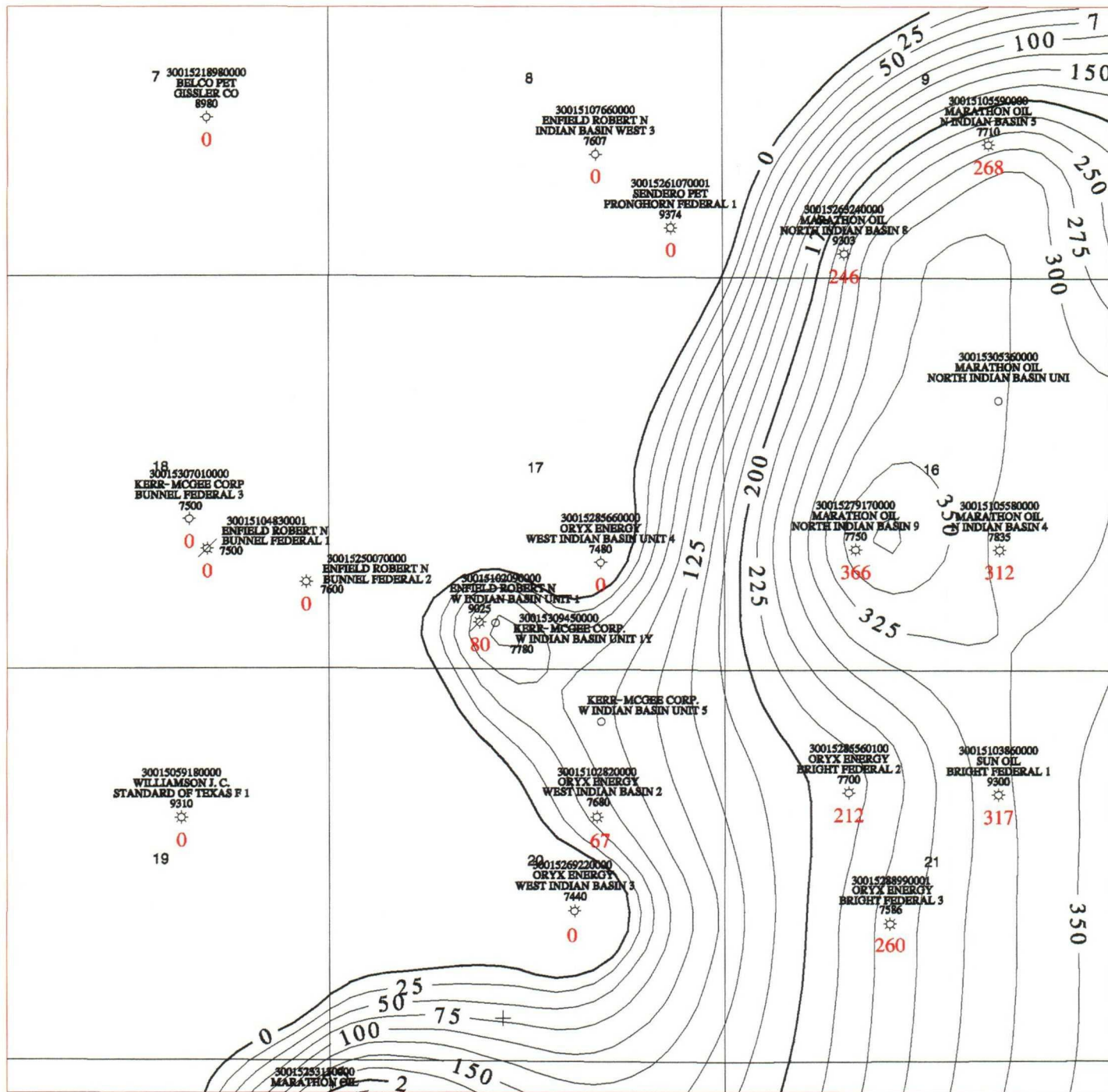
Dear Mr. Stogner:

Enclosed, as you requested, is a dolomite thickness map of the subject area. The proposed location should encounter a relatively thick dolomite section, and will move away from the No. 3 well, in the SW¼NE¼ of Section 20, which produced water. Call if you need anything further in this matter.

Very truly yours,

  
James Bruce





**KERR-McGEE CORPORATION**

EXPLORATION AND PRODUCTION DIVISION

INDIAN BASIN FIELD, NM  
GROSS DOLOMITE THICKNESS  
UPPER PENNSYLVANIAN CISCO/CANYON FORMATIONS

SCALE 1:24000

DRAWN TODD N CREAMER

DATE 17-MAR-2000

DRAWING

1:24000  
FEET 0 2000 FEET

STATUTE MILES 0 .5 STATUTE MILES