



L. P. Thompson
Division Manager
Production Department
Hobbs Division
Western Hemisphere Petroleum Division

Continental Oil Company
P.O. Box 460
1001 North Turner
Hobbs, New Mexico 88240
(505) 393-4141

October 6, 1976

DHC - 208
Due - 10/28/76

New Mexico Oil Conservation Commission
P. O. Box 2088
Santa Fe, New Mexico 87501

Attention: Mr. Joe D. Ramey, Secretary Director

Gentlemen:

Application for Downhole Commingling - Britt B Well No. 10 Unit F
Section 15 T-20S, R-37E, Lea County, New Mexico

Continental Oil Company, P. O. Box 460, Hobbs, New Mexico, as operator of the Britt B lease, respectfully requests Administrative approval under the provisions of Order No. R-3845, to commingle in the wellbore production from the Weir Blinebry Oil and Monument-Tubb Oil Pools in the subject well. This dual completion was authorized by Administrative Order No. DC-818. The attached plat shows the Britt B lease outlined in red and the No. 10 well by the red circle.

On October 1, 1976, the bottom hole pressures in the Weir Blinebry and Monument-Tubb were measured in the well. The Weir Blinebry pressure was measured to be 1190 psi after being shut-in for 24 hours. The Monument-Tubb pressure was measured to be 630 psi after being shut-in for 24 hours.

Attached is Form C-116 indicating the latest well tests. Also attached is a production decline curve for each zone. Anticipated production from the well after commingling is 20 BOPD by pumping.

The fluid from these two pools has been commingled at the battery since 1961 as approved under Administrative Order No. PC-33 and there has been no indication of incompatibility. Both crudes are typical Permian High Gravity crude.

USGS is being notified of this application by copy of this letter. Your approval and further handling of this application will be sincerely appreciated.

Yours very truly,

L. P. Thompson
Division Manager

dlh
Enc

BL - 250 10% 30 mcf 12%
Tubb - 1750 90% 230 mcf 88%
19 260

Bottom pf: 6534'; max prod = 40 BOPD

Mr. Joe D. Ramey
Page 2
October 6, 1976

Copies to:

New Mexico Oil Conservation Commission
P. O. Box 1980
Hobbs, NM 88240

U. S. Geological Survey
Drawer 1857
Roswell, NM 88201

FEE: FOH: JWK:

Amoco Production Co.
P. O. Box 68
Hobbs, NM 88240

Arco Production Co.
P. O. Box 1710
Hobbs, NM 88240

Chevron Oil Co.
P. O. Box 1660
Midland, TX 79701

Offset Operator

Marathon Oil Co.
P. O. Box 552
Midland, TX 79701

Amerada Hess
Drawer 817
Seminole, TX 79360

I hereby certify that the above information is true and complete to the best of my knowledge and belief.

Report casing pressure in lieu of tubing pressure for any well producing through casing.

Mail original and one copy of this report to the district office of the New Mexico Oil Conservation Commission in accordance with Rule 30j and appropriate pool rules.

NM0CC (2) FILE

(Date)

I hereby certify that the above information is true and complete to the best of my knowledge and belief.

Report casing pressure in lieu of tubing pressure for any well producing through casing.

Mail original and one copy of this report to the district office of the New Mexico Oil Conservation Commission in accordance with Rule 301 and appropriate pool rules.

FILE

(Signature)

(Title)

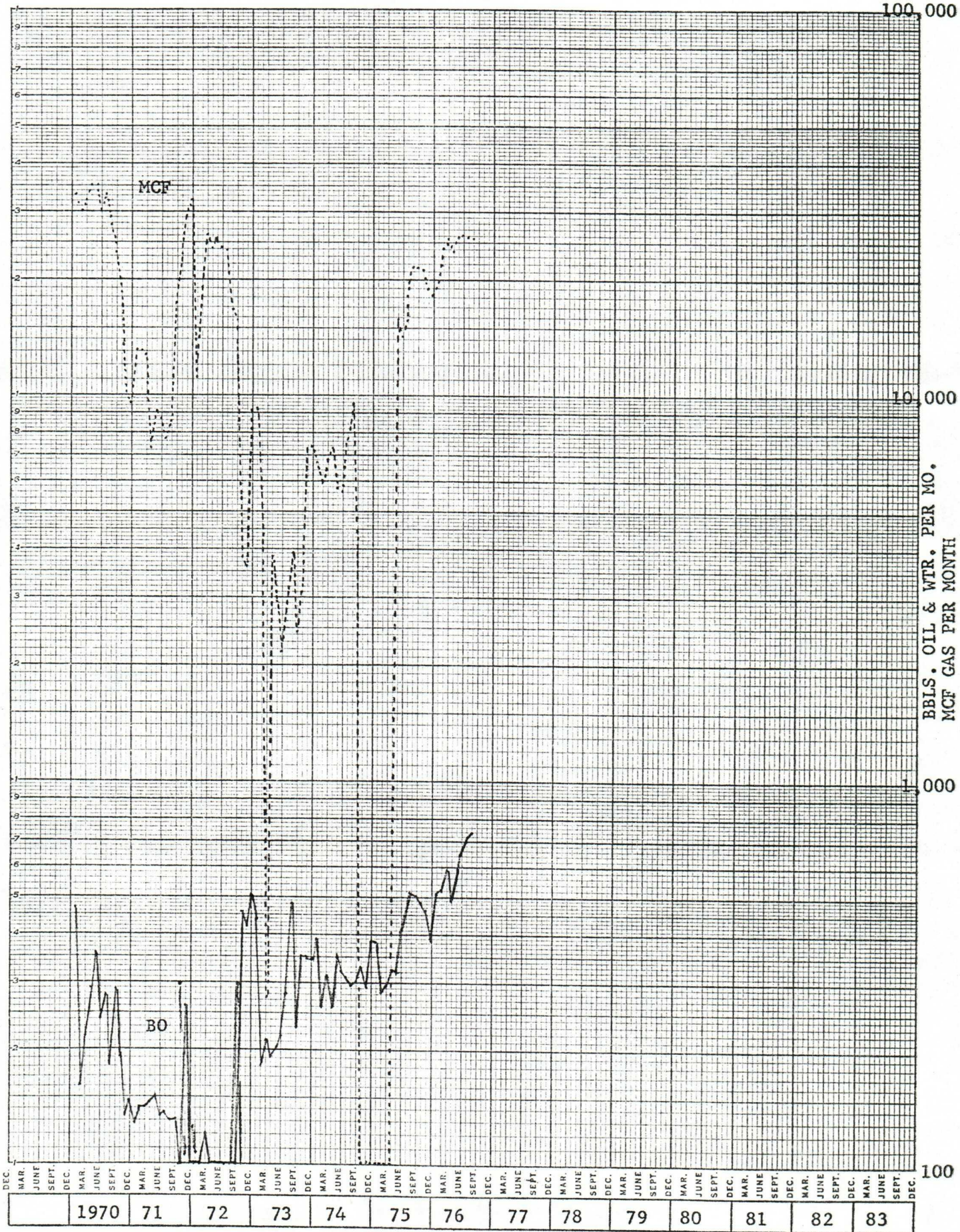
(Dare)

MONUMENT TUBB POOL
BRITT B NO. 10

REORDER DIRECT FROM CODEX BOOK CO., NORWOOD, MASS. 02062
PRINTED IN U.S.A.

codex
GRAPH PAPER

NO. SP-2644

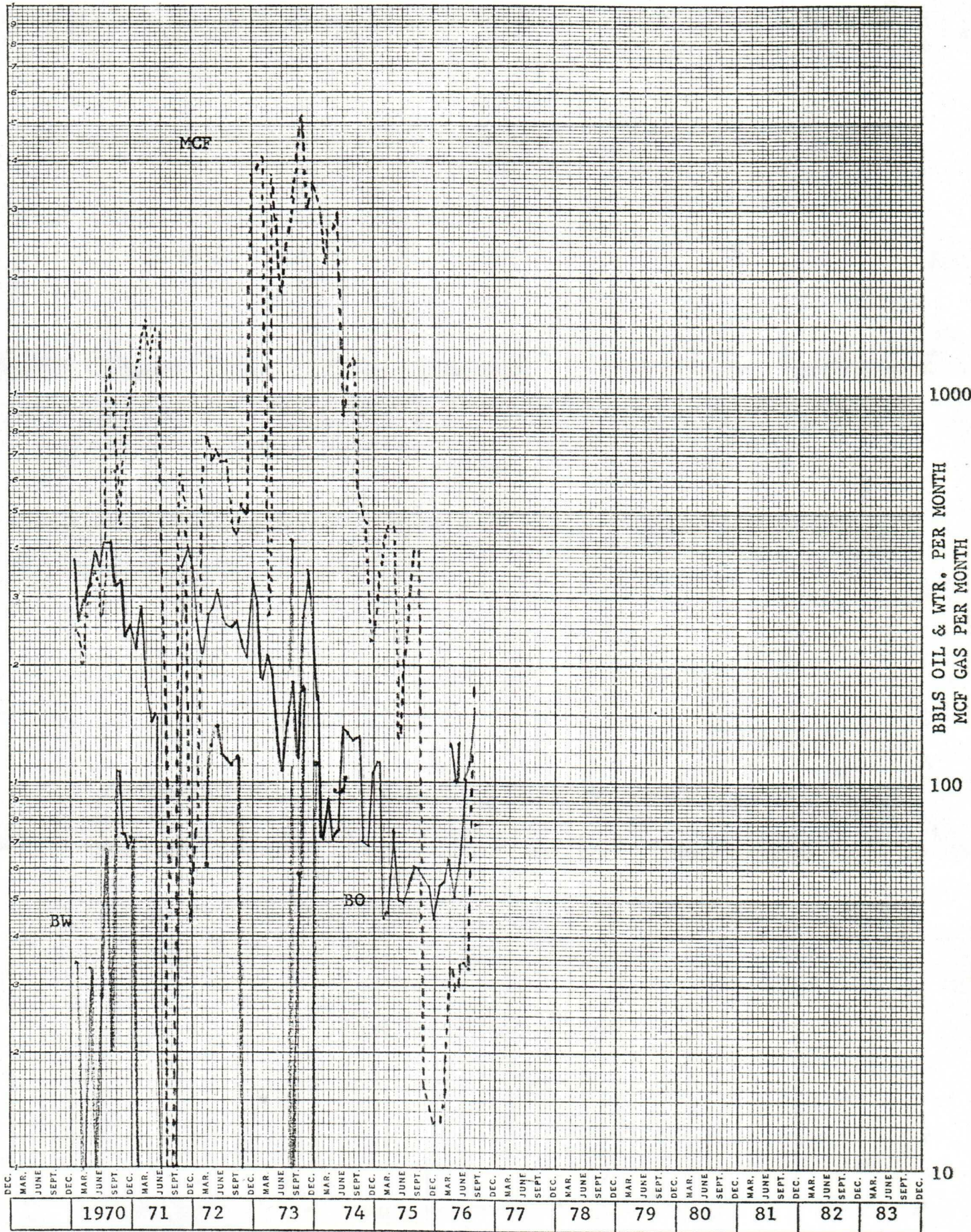


WEIR BLINEBRY POOL
BRITT B NO. 10

REORDER DIRECT FROM CODEX BOOK CO., NORWOOD, MASS. 02062
PRINTED IN U.S.A.

codex®
GRAPH PAPER

NO. SP-2644



1000

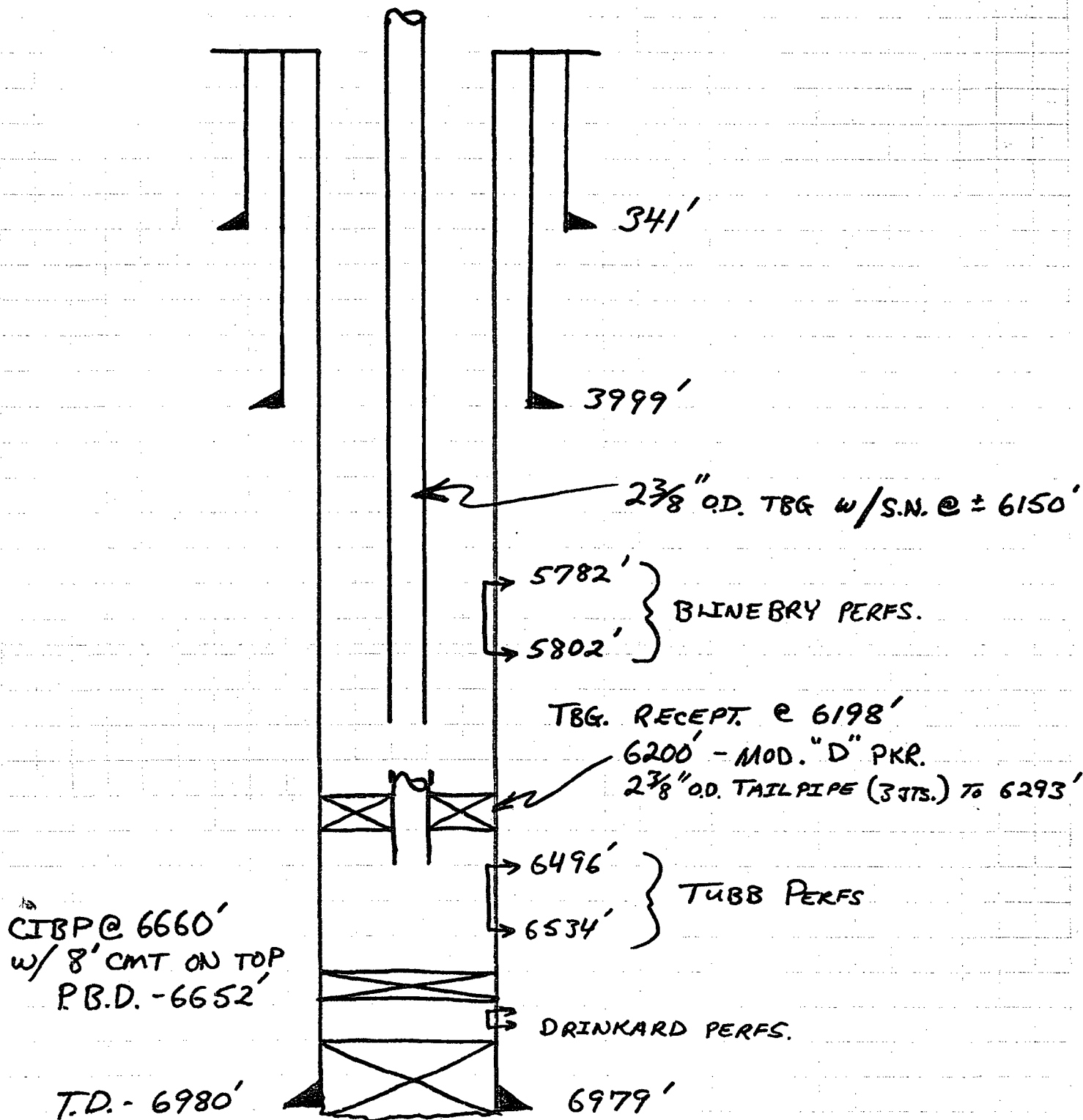
BBLS OIL & WTR. PER MONTH
MCF GAS PER MONTH

100

10

BRITT B, WELL No. 10
 "O" - 11' AGL

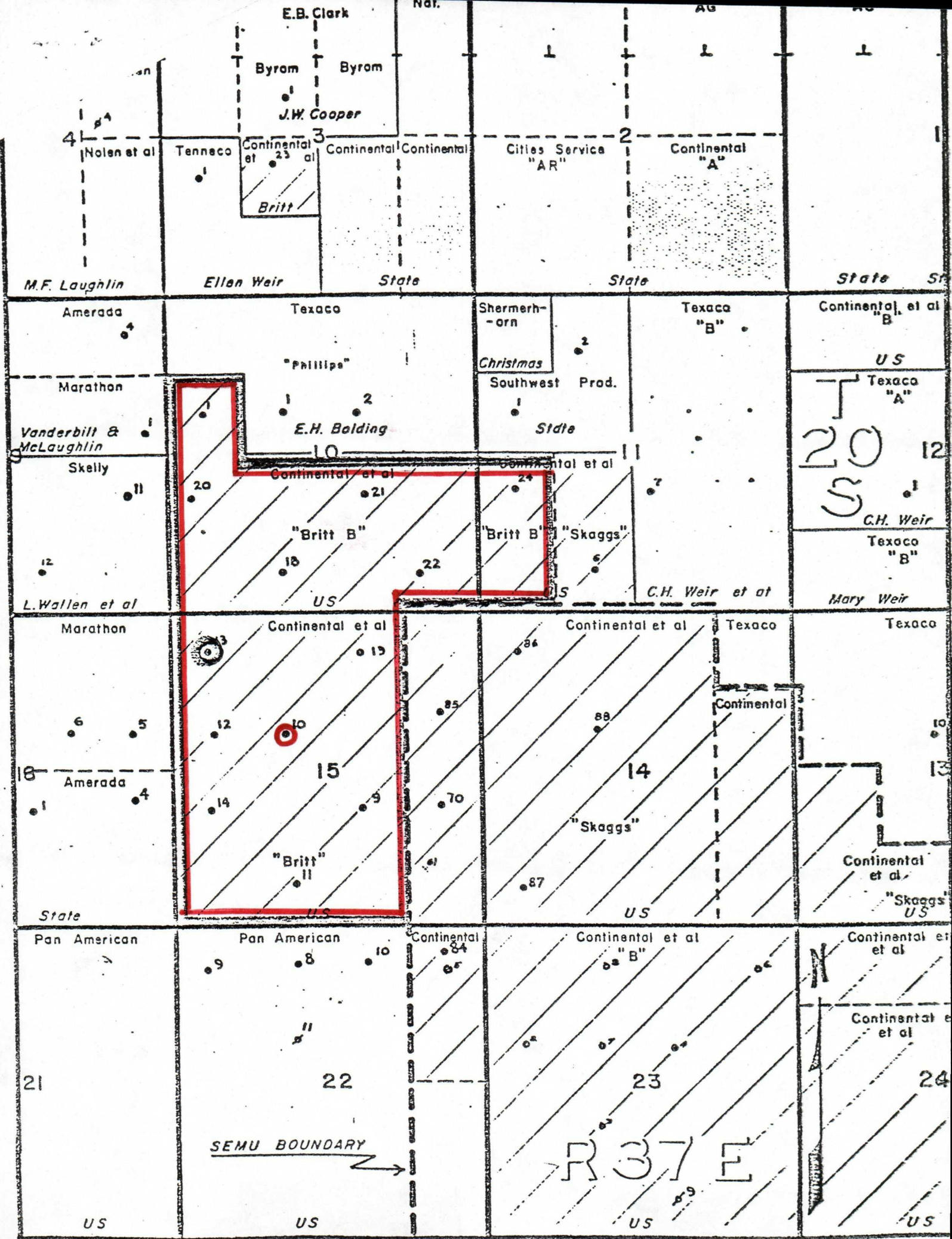
UNIT F - SEC. 15, T-20S, R-37E



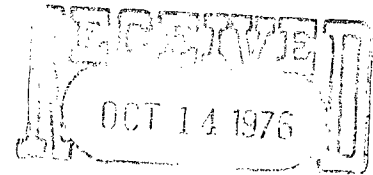
SRB - 10/5/76

CONTINENTAL OIL COMPANY
 CALCULATED SHEET

PROPOSED DHC COMPLETION
 BRITT B WELL No. 10



OIL CONSERVATION COMMISSION
Hobbs DISTRICT



OIL CONSERVATION COMM.
Santa Fe

OIL CONSERVATION COMMISSION
BOX 2088
SANTA FE, NEW MEXICO

DATE Oct. 12, 1976

RE: Proposed MC _____
Proposed DHC X _____
Proposed NSL _____
Proposed SWD _____
Proposed WFX _____
Proposed PMX _____

Gentlemen:

I have examined the application dated _____
for the Continental Oil Co. Britt B #10-F 15-20-37
Operator Lease and Well No. Unit, S-T-R

and my recommendations are as follows:

O.K.---J.S.

Yours very truly,