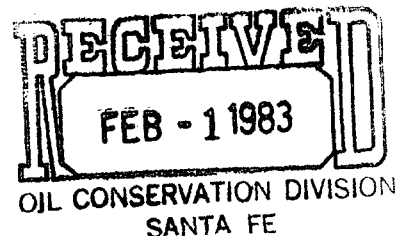


# HUNT ENERGY CORPORATION

406 N. BIG SPRING  
MIDLAND, TEXAS 79701  
Jan. 24, 1983



Re: Application for Exception to  
Statewide Rule No. 303-A to  
Downhole Comingling Production  
from the Blinebry & Drinkard  
Pools of the Mittie Weatherly  
Well No. 6, Lea County,  
New Mexico

New Mexico Oil Conservation Commission  
P.O. Box 2088  
Santa Fe, New Mexico 87501

Attention: Mr. Stogner

Gentlemen:

We respectfully request administrative approval, (subject to the twenty (20) day waiting period), to down-hole comingling production from the Blinebry and Drinkard Pools in N. B. Hunt's Mittie Weatherly #6 well. This well is located in Unit F, 1,980' FNL and 3,300' FWL of Section 21, Twp 21-S, Rge 37-E, Lea County, New Mexico. The following data is information relevant to our request to comingling the well.

- 1.) Well #6 is currently dually completed in the Blinebry & Drinkard zones. Completion intervals, for each zone, are as follows:  
Blinebry - 5,810' to 5,883' (Selectively Perforated)  
Drinkard - 6,458' to 6,554' & 6,588' to 6,612'  
Both zones are produced through separate strings of 2-3/8" tubing.
- 2.) The Blinebry & Drinkard are both classified as oil zones. Average GOR's for the Blinebry & Drinkard are 5,926 SCFPB and 25,000 SCFPB, respectively.
- 3.) The combined daily production from these zones does not exceed the 40 BOPD limitation provided for by the deepest perforations in the lower zone.
- 4.) Attached, for your reference, is the production history for each zone since April of 1977. Also attached are the Division Forms C116 and C124 which show the latest well test results for each zone.
- 5.) Royalty and working interest ownership is common to both zones.
- 6.) The estimated bottom-hole pressure for each zone is as follows:  
Blinebry: 392 PSI  
Drinkard: 291 PSI
- 7.) Offset operators were sent a copy of Form C-103 as a notification of our application for administrative approval to down-hole comingling the zones.
- 8.) By using graphical analysis of the past three years, it has been determined that 43% of the comingled oil production will be from the Drinkard and 57% from the Blinebry. The Drinkard contributes 76% of the total gas production and 24% is contributed by the Blinebry.

This well was originally completed on 5-28-48 in the Drinkard zone. In 1965, the well was completed in the Blinebry zone.

Recently, a packer leakage test was run on the well and a down-hole tubing and/or packer leak was discovered. As a result, the tubing string needs to be pulled and inspected for defective tubing.

Because of the old age of the production tubing and its deteriorated state, much of the tubing will need to be replaced. The low productivity of this well and the fact that it is nearing the end of its economical life, makes the replacement of both strings of tubing economically unfeasible. Its combined production, prior to the tubing and/or packer leak, was approximately 14 BOPD and 350 MCFPD. Therefore, in order to continue producing the well as efficiently as possible, we are requesting the authority to downhole comingle the Blinebry and Drinkard zones.

Since all production from the Blinebry and Drinkard is presently comingled at the surface, the combination of the reservoir fluids downhole will not change the value or quantity of the oil or gas produced.

A current 24 hour productivity test and bottom-hole pressure test will not be available without first repairing the tubing string. However, the most recent production reports that are available have been included with this letter. Hopefully, this will provide adequate information.

Your consideration of this request will be appreciated.

Respectively submitted,

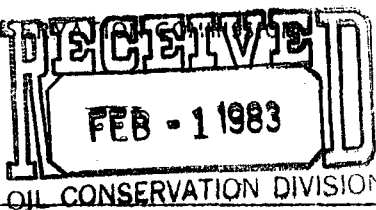
*Gay Travis*  
by  
*Carl W. Luea*

---

GT/bsb

NO. OF COPIES RECEIVED		
DISTRIBUTION		
SANTA FE		
FILE		
U.S.G.S.		
LAND OFFICE		
OPERATOR		

NEW MEXICO OIL CONSERVATION DIVISION



Form C-103  
Supersedes Old  
C-102 and C-103  
Effective 1-1-65

**SUNDY NOTICES AND REPORTS ON WELLS, SANTA FE**  
DO NOT USE THIS FORM FOR PROPOSALS TO DRILL OR TO RE-OPEN OR PLUG BACK TO A DIFFERENT RESERVOIR. USE "APPLICATION FOR PERMIT - 1" (FORM C-101, FOR SUCH PROPOSALS.)

1. ☒ OIL WELL ☐ GAS WELL ☐ OTHER- Dual Completion

2. Name of Operator  
N. B. Hunt

3. Address of Operator  
406 N. Big Spring, Midland, Texas 79701

4. Location of Well  
UNIT LETTER F 1,980 FEET FROM THE North LINE AND 3,300 FEET FROM THE West LINE, SECTION 21 TOWNSHIP 21-S RANGE 37-E N.M.P.M.

15. Elevation (Show whether DF, RT, GR, etc.)  
3,466' DF

5a. Indicate Type of Lease  
State ☐ Fee ☒

5. State Oil & Gas Lease No.

7. Unit Agreement Name

8. Farm or Lease Name  
Mittie Weatherly

9. Well No.  
6

10. Field and Pool, or Wildcat  
Drinkard/Blinbry

12. County  
Lea

16. Check Appropriate Box To Indicate Nature of Notice, Report or Other Data

NOTICE OF INTENTION TO:		SUBSEQUENT REPORT OF:	
PERFORM REMEDIAL WORK <input type="checkbox"/>	PLUG AND ABANDON <input type="checkbox"/>	REMEDIAL WORK <input type="checkbox"/>	ALTERING CASING <input type="checkbox"/>
TEMPORARILY ABANDON <input type="checkbox"/>	CHANGE PLANS <input type="checkbox"/>	COMMENCE DRILLING OPNS. <input type="checkbox"/>	PLUG AND ABANDONMENT <input type="checkbox"/>
PULL OR ALTER CASING <input type="checkbox"/>	OTHER <u>Downhole Comingling</u> <input type="checkbox"/>	CASING TEST AND CEMENT JOBS <input type="checkbox"/>	OTHER <input type="checkbox"/>

17. Describe Proposed or Completed Operations (Clearly state all pertinent details, and give pertinent dates, including estimated date of starting any proposed work) SEE RULE 1103.

In accordance with the Oil Conservation Division of New Mexico, we are notifying all offset operators of our intention to downhole comingling production from the Drinkard and Blinbry zones.

A packer leakage test recently showed a tubing and/or packer leak in this well. Instead of replacing sections of the two strings of tubing, we have decided to repair only one string of tubing and comingling the production through one string of tubing. We feel that this method is the most economical since the well is nearing the end of its economic life.

18. I hereby certify that the information above is true and complete to the best of my knowledge and belief.

SIGNED Gary Travis TITLE Petroleum Engineer DATE 1-24-83

APPROVED BY \_\_\_\_\_ TITLE \_\_\_\_\_ DATE \_\_\_\_\_

CONDITIONS OF APPROVAL, IF ANY:

STATE OF NEW MEXICO

ENERGY AND MINERALS DEPARTMENT

RESERVOIR PRESSURE REPORT

TYPE OF REPORT - (X)
Initial Completion
Special
General Survey
Operator

Operator		Pool		County		Date	
N.B. Hunt		Drinkard		Lea		November 18, 1982	
Address		Producing Formation		Water Gradient		Datum Plane	
406 North Big Springs St. Midland, Texas 79701		Drinkard		Oil Gradient		Gas Gravity	
				- psi/ft.		(-3050)	

Mittie Weatherly	4	B	21	21s37e	3458	0	11/17/82	48	371	5636	106	432																																																																																																																																																																																																																																																																																																																																																																																																																																																																																																																																																																																																																																																																																																																																																																																																																																																																																																																																																																																																																																																																																																																																																																																																																																																																																																																																																																																																																																																																																																																				
------------------	---	---	----	--------	------	---	----------	----	-----	------	-----	-----	--	--	--	--	--	--	--	--	--	--	--	--	--	--	--	--	--	--	--	--	--	--	--	--	--	--	--	--	--	--	--	--	--	--	--	--	--	--	--	--	--	--	--	--	--	--	--	--	--	--	--	--	--	--	--	--	--	--	--	--	--	--	--	--	--	--	--	--	--	--	--	--	--	--	--	--	--	--	--	--	--	--	--	--	--	--	--	--	--	--	--	--	--	--	--	--	--	--	--	--	--	--	--	--	--	--	--	--	--	--	--	--	--	--	--	--	--	--	--	--	--	--	--	--	--	--	--	--	--	--	--	--	--	--	--	--	--	--	--	--	--	--	--	--	--	--	--	--	--	--	--	--	--	--	--	--	--	--	--	--	--	--	--	--	--	--	--	--	--	--	--	--	--	--	--	--	--	--	--	--	--	--	--	--	--	--	--	--	--	--	--	--	--	--	--	--	--	--	--	--	--	--	--	--	--	--	--	--	--	--	--	--	--	--	--	--	--	--	--	--	--	--	--	--	--	--	--	--	--	--	--	--	--	--	--	--	--	--	--	--	--	--	--	--	--	--	--	--	--	--	--	--	--	--	--	--	--	--	--	--	--	--	--	--	--	--	--	--	--	--	--	--	--	--	--	--	--	--	--	--	--	--	--	--	--	--	--	--	--	--	--	--	--	--	--	--	--	--	--	--	--	--	--	--	--	--	--	--	--	--	--	--	--	--	--	--	--	--	--	--	--	--	--	--	--	--	--	--	--	--	--	--	--	--	--	--	--	--	--	--	--	--	--	--	--	--	--	--	--	--	--	--	--	--	--	--	--	--	--	--	--	--	--	--	--	--	--	--	--	--	--	--	--	--	--	--	--	--	--	--	--	--	--	--	--	--	--	--	--	--	--	--	--	--	--	--	--	--	--	--	--	--	--	--	--	--	--	--	--	--	--	--	--	--	--	--	--	--	--	--	--	--	--	--	--	--	--	--	--	--	--	--	--	--	--	--	--	--	--	--	--	--	--	--	--	--	--	--	--	--	--	--	--	--	--	--	--	--	--	--	--	--	--	--	--	--	--	--	--	--	--	--	--	--	--	--	--	--	--	--	--	--	--	--	--	--	--	--	--	--	--	--	--	--	--	--	--	--	--	--	--	--	--	--	--	--	--	--	--	--	--	--	--	--	--	--	--	--	--	--	--	--	--	--	--	--	--	--	--	--	--	--	--	--	--	--	--	--	--	--	--	--	--	--	--	--	--	--	--	--	--	--	--	--	--	--	--	--	--	--	--	--	--	--	--	--	--	--	--	--	--	--	--	--	--	--	--	--	--	--	--	--	--	--	--	--	--	--	--	--	--	--	--	--	--	--	--	--	--	--	--	--	--	--	--	--	--	--	--	--	--	--	--	--	--	--	--	--	--	--	--	--	--	--	--	--	--	--	--	--	--	--	--	--	--	--	--	--	--	--	--	--	--	--	--	--	--	--	--	--	--	--	--	--	--	--	--	--	--	--	--	--	--	--	--	--	--	--	--	--	--	--	--	--	--	--	--	--	--	--	--	--	--	--	--	--	--	--	--	--	--	--	--	--	--	--	--	--	--	--	--	--	--	--	--	--	--	--	--	--	--	--	--	--	--	--	--	--	--	--	--	--	--	--	--	--	--	--	--	--	--	--	--	--	--	--	--	--	--	--	--	--	--	--	--	--	--	--	--	--	--	--	--	--	--	--	--	--	--	--	--	--	--	--	--	--	--	--	--	--	--	--	--	--	--	--	--	--	--	--	--	--	--	--	--	--	--	--	--	--	--	--	--	--	--	--	--	--	--	--	--	--	--	--	--	--	--	--	--	--	--	--	--	--	--	--	--	--	--	--	--	--	--	--	--	--	--	--	--	--	--	--	--	--	--	--	--	--	--	--	--	--	--	--	--	--	--	--	--	--	--	--	--	--	--	--	--	--	--	--	--	--	--	--	--	--	--	--	--	--	--	--	--	--	--	--	--	--	--	--	--	--	--	--	--	--	--	--	--	--	--	--	--	--	--	--	--	--	--	--	--	--	--	--	--	--	--	--	--	--	--	--	--	--	--	--	--	--	--	--	--	--	--	--	--	--	--	--	--	--	--	--	--	--	--	--	--	--	--	--	--	--	--	--	--	--	--	--	--	--	--	--	--	--	--	--	--	--	--	--	--	--	--	--	--	--	--	--	--	--	--	--	--	--	--	--	--	--	--	--	--	--	--	--	--	--	--	--	--	--	--	--	--	--	--	--	--	--	--	--	--	--	--	--	--	--	--	--	--	--	--	--	--	--	--	--	--	--	--	--	--	--	--	--	--	--	--	--	--	--	--	--	--	--	--	--	--	--	--	--	--	--	--	--	--	--	--	--	--	--	--	--	--	--	--	--	--	--	--	--	--	--	--	--	--	--	--	--	--	--	--	--	--	--	--	--	--	--	--	--	--	--	--	--	--	--	--	--	--	--	--	--	--	--	--	--	--	--	--	--	--	--	--	--	--	--	--	--	--	--	--	--	--	--	--	--	--	--	--	--	--	--	--	--	--	--	--	--	--	--	--	--	--	--	--	--	--	--	--	--	--	--	--	--	--	--	--	--	--	--	--	--	--	--	--	--	--	--	--	--	--	--	--	--	--	--	--	--	--	--	--	--	--	--	--	--	--	--	--	--	--	--	--	--	--	--	--	--	--	--	--	--	--	--	--	--	--	--	--	--	--	--	--	--	--	--	--	--	--	--	--	--	--	--	--	--	--	--	--	--	--	--	--	--	--	--	--	--	--	--	--	--	--	--	--	--	--	--	--	--	--	--	--	--	--	--	--	--	--	--	--	--	--	--	--	--	--	--	--	--	--	--	--	--	--	--	--	--	--	--	--	--	--	--	--	--	--	--	--	--	--	--	--	--	--	--	--	--	--	--	--	--	--	--	--	--	--	--	--	--	--	--	--	--	--	--	--	--	--	--	--	--	--	--	--	--	--	--	--	--	--	--	--	--	--	--	--	--	--	--	--	--	--	--	--	--	--	--	--	--	--	--	--	--	--	--	--	--	--	--	--	--	--	--	--	--	--	--	--	--	--	--	--	--	--	--	--	--	--	--	--	--	--	--	--	--	--	--	--	--	--	--	--	--	--	--	--	--	--	--	--	--	--	--	--	--	--	--	--	--	--	--	--	--	--	--	--	--	--	--	--	--	--	--	--	--	--	--	--	--	--	--	--	--	--	--	--	--	--	--	--	--	--	--	--	--	--	--	--	--	--	--	--	--	--	--	--	--	--	--	--	--	--	--	--	--	--	--	--	--

RECEIVED  
NOV 23 1982  
HUNT ENERGY

All depths plus or minus sea level; all pressures psi; Bomb shall be calibrated frequently enough against a dead weight tester to ensure an accuracy of one per cent; gas gravity shall be determined by analysis; liquid level shall be feet above datum plane. SEE RULE 302.

\* Well shall be produced at least 24 hours prior to shutting in for sonic test.

I hereby certify that the above information is true and complete to the best of my knowledge and belief.

JARREL SERVICES, INC.

*Joe A. Chino*

Agent

(Title)

November 18, 1982

(Date)

## RESERVOIR PRESSURE REPORT

TYPE OF REPORT - (X)		Initial Completion		Special		General Survey		Operator		Pool		County		Date						
						X		N.B. Hunt		Blinebry		Lea		February 15, 1982						
Address		406 N. Big Spring St. Midland, Texas 79701		Producing Formation		Blinebry		Oil Gradient		Water Gradient		Gas Gradient		Datum Plane (-2400)						
LEASE	WELL NO.	LOCATION			ELEV.	OIL OR GAS	DATE TESTED	IN. TUBE	IN. TUBE PRESS.	BOMB TEST DATA				SONIC INSTRUMENT TEST DATA*				PRESS. A.T. DATUM		
		U	S	T						R	TEST DEPTH	B.M. TEMP. °F	OB. SERVED PRESS.	PROD. TEST (BBL./DAY)	LIQUID LEVEL	LIQUID GRAD. IN. TUBE	WT. OF LIQUID COL. PSI		WT. OF GAS COL. PSI	CSG. PRESS.
Mittie Weatherly	4	B	21	21	37	3458	0	2/10/82	48	419	5600	100	487							490
Mittie Weatherly	5	E	21	21	37	3485	0	2/10/82	48	345	5700	110	402							404
Mittie Weatherly	6	F	21	21	37	3458	0	2/10/82	48	502	5350	100	756							923

*Everything prior to this, including the one and a half of 5-5-82, was all bad.*

All depths plus or minus sea level; all pressures psi; Bomb shall be calibrated frequently enough against a dead weight tester to ensure an accuracy of one per cent; gas gravity shall be determined by analysis; liquid level shall be feet above datum plane. SEE RULE 302.

\* Well shall be produced at least 24 hours prior to shutting in for sonic test.

I hereby certify that the above information is true and complete to the best of my knowledge and belief.

JARREL SERVICES, INC.

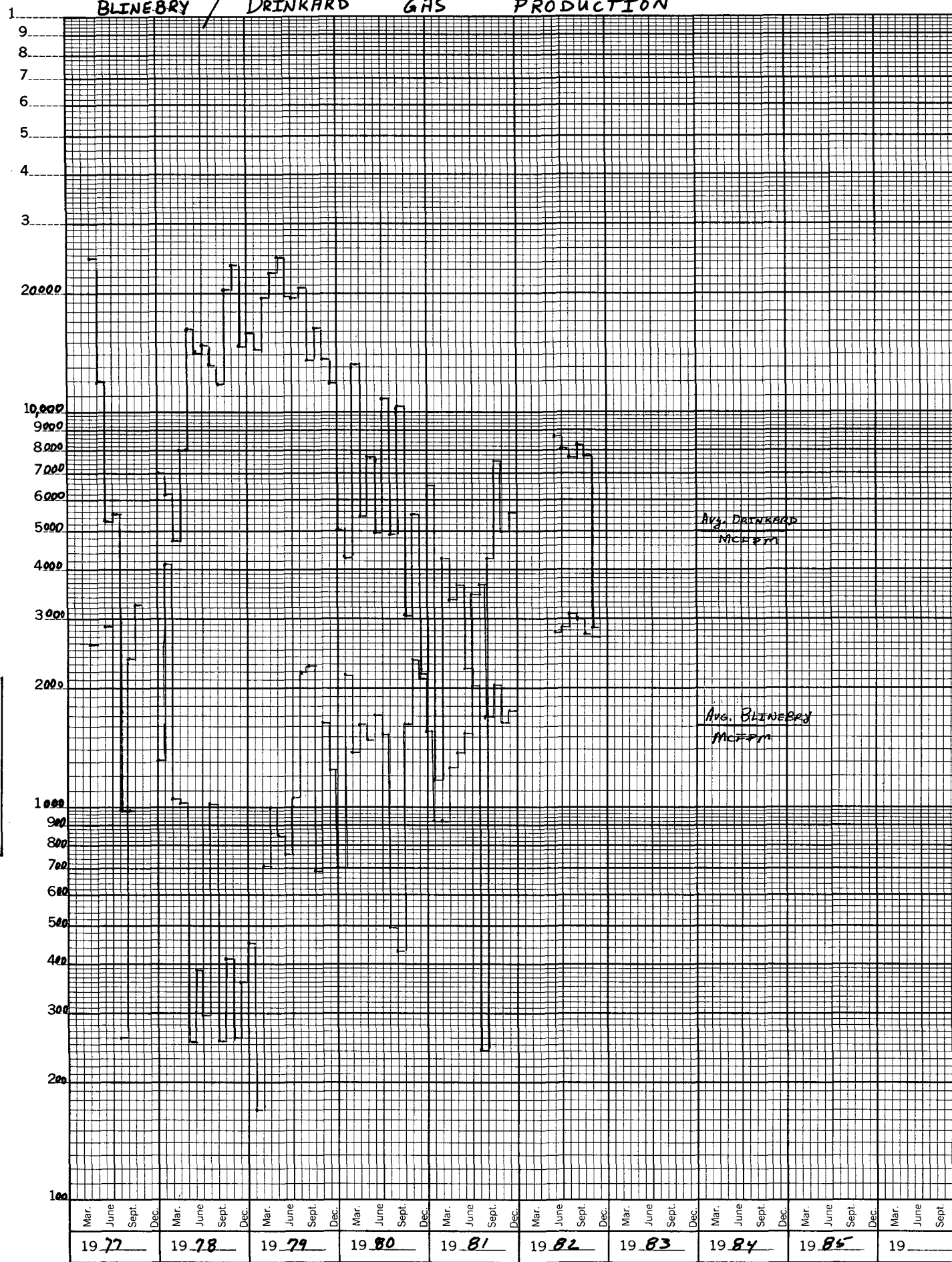
Agent

February 15, 1982

(Dead)

# BLINEBRY / DRINKARD GAS PRODUCTION

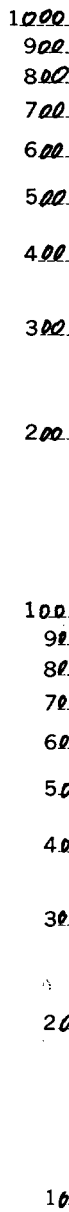
MCF PM

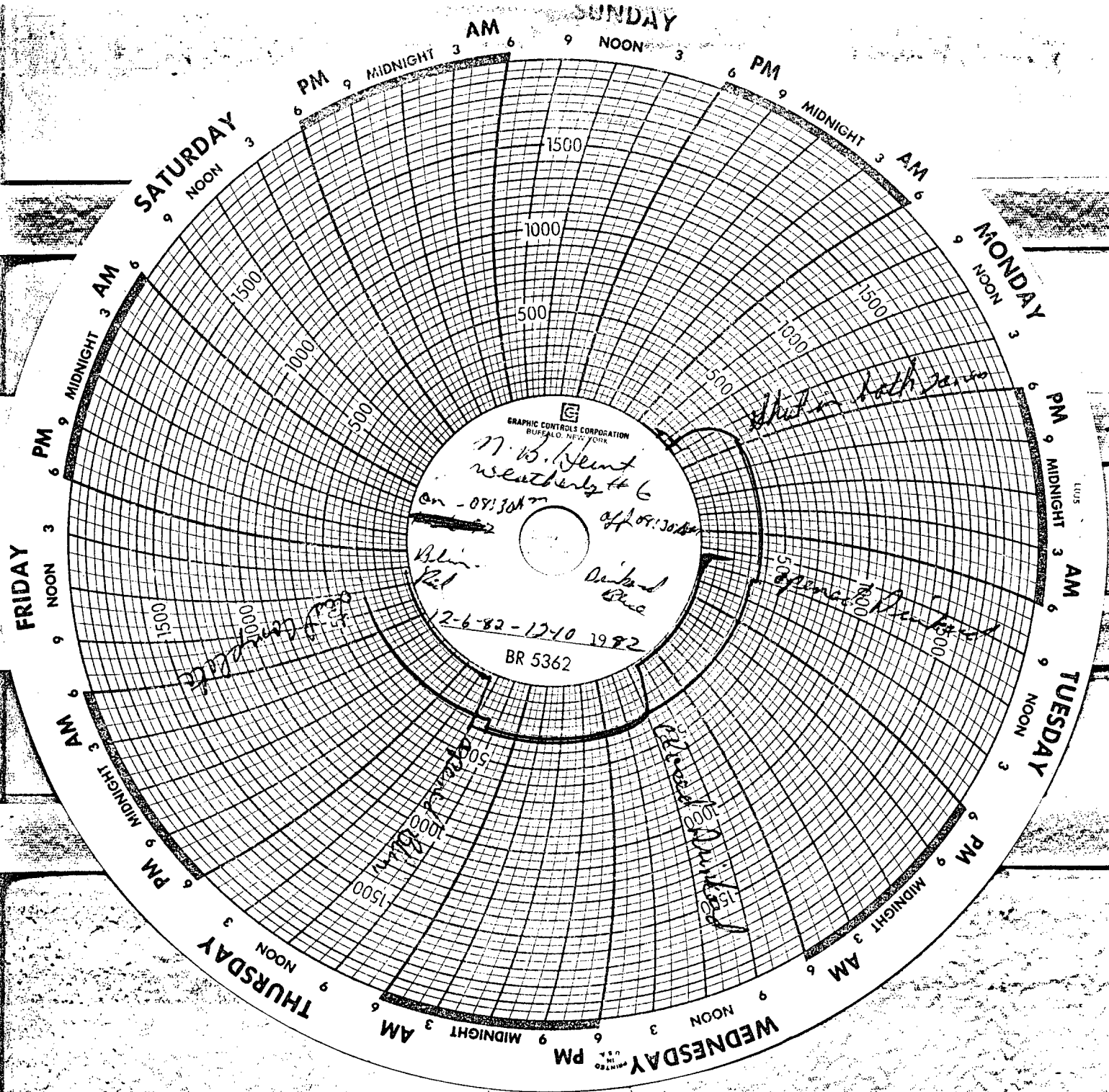


BLINEBRY / DRINKARD

## OIL PRODUCTION

**K+E** 20 YEARS BY MONTHS X 3 LOG CYCLES  
KEUFFEL & ESSER CO. MADE IN U.S.A. ♦







13-3/8" 48# H-40 csg. (I.D. 12.715")  
set @ 200'. 125 sx. cmt. circ.

9-5/8" 36# H-40 csg. (I.D. 8.921")  
set @ 2724'. 1200 sx. cmt. circ.

SN @ 5438.21'

2 3/8" Armco 4.6# J-55 Tubing  
(I.D. 1.995") Set at 5479'  
174 Jts.

BAKER MOD. "J" Packer  
set at 5470 feet

30 jts 2 3/8" J55 BRD

Top at 5588 feet

UPPER  
ZONE

Name: BLINEBRY  
Completion this Zone: OIL

Perforated: 5810 - 83 feet  
This Zone produced thru UPPER TUBING

Bottom at 6120 feet

2 3/8" EUE J-55 4.7 # TUBING  
(I.D. 1.995") SET AT 6428'

BAKER MOD "D"  
Packer set at 6410 feet

GOT CIRC. SLEEVE (CLOSED) @ 6400'  
OTIS N-2 No. 60 Nipple @ 6409  
2 3/8" x 2 7/8" double pin and 2 7/8" collar  
Baker locator sub  
2 Baker seals  
Baker Model "D" Packer  
2 3/8" tubing sub w/ mule shoe

Top at 6210 feet

LOWER  
ZONE

Name: DRINKARD  
Completion this Zone: OIL

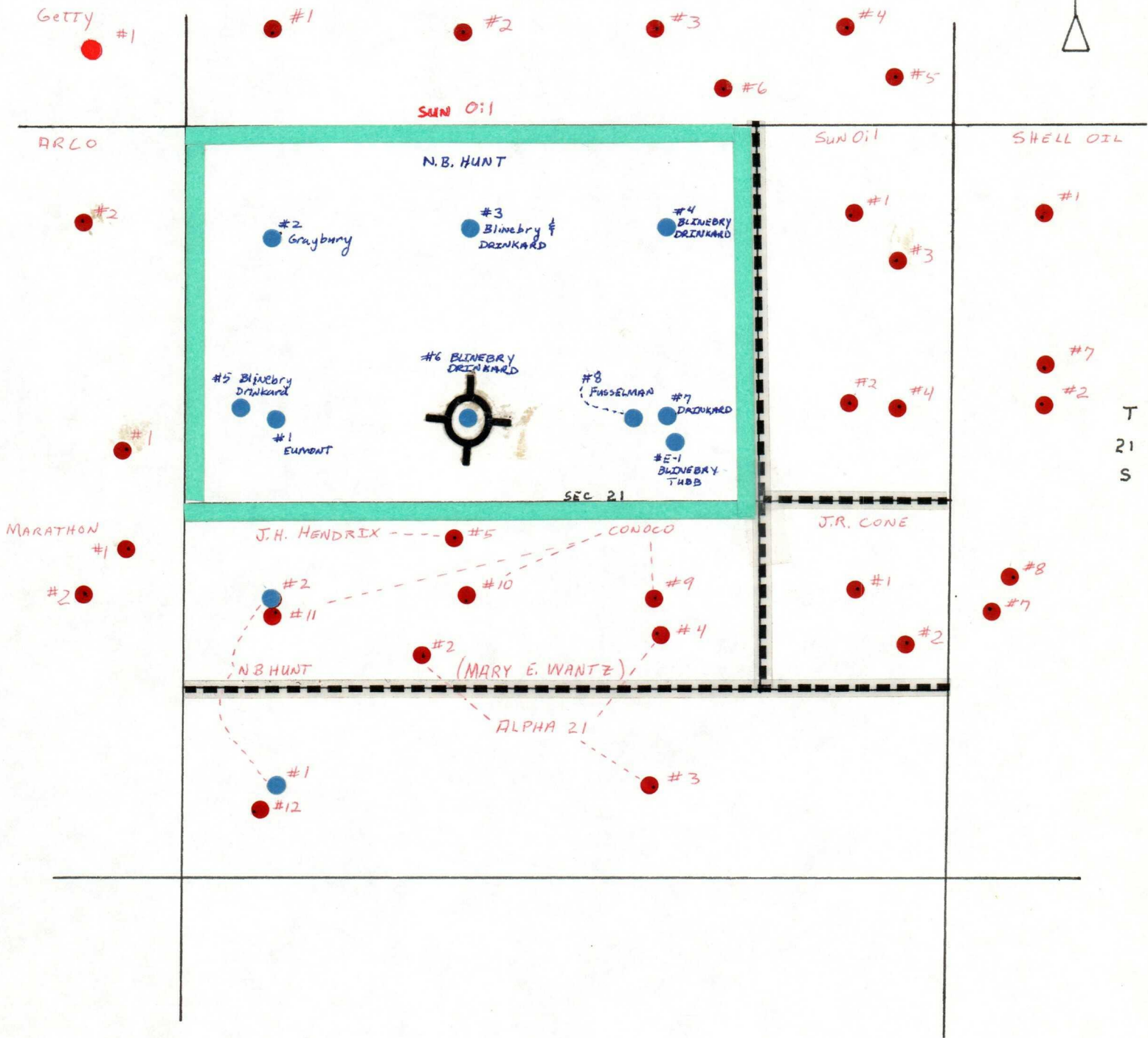
6458 - 6554  
Perforated: 6588 - 6612 feet  
This Zone produced thru LOWER TUBING

Bottom at 6621' feet

7" 20# H-40 csg. (I.D. 6.456")  
set @ 6620'. 700 sx. cmt top @  
2000'.  
TD 6621'

N. B. Hunt  
Weatherly No. 6  
Blinebry and Drinkard Pools  
Lea County, New Mexico

R 37 - E



● N.B. HUNT WELLS



HUNT ENERGY CORPORATION  
406 N. BIG SPRING  
MIDLAND, TEXAS

N. B. HUNT  
MITTIE WEATHERLY #6

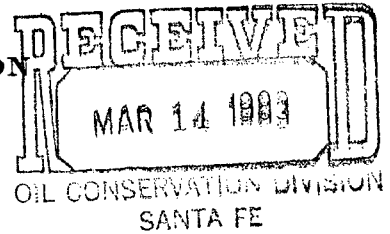
1-21-83

Lea Co. NEW MEXICO

HUNT ENERGY CORPORATION

406 N. BIG SPRING  
MIDLAND, TEXAS 79701

March 4, 1983



Mr. Gilbert Quintana  
State of New Mexico  
Energy & Minerals Dept.  
Oil Conservation Division  
P. O. Box 2088  
State Land Office Bldg.  
Santa Fe, New Mexico 87501

Dear Sir:

Attached is the information that you and Mr. Ramey requested in his letter dated February 16, 1983 concerning our application for exception to Statewide Rule No. 303-A for our Mittie Weatherly #6. In response to question No. 2, we ran a BHP survey last week on the Drinkard zone which indicated the BHP to be 433 psi. Please correct the original estimated pressure of 392 psi on the application to 433 psi.

Thank you for your assistance and your patience in regard to our application. If I can be of any further help, please let me know.

Sincerely,

A handwritten signature in cursive script, appearing to read "Earl Levea", written over a horizontal line.

Earl Levea  
Acting District Engineer  
Hunt Energy Corporation

Attach.

EL/bsb

GAS-OIL RATIO TESTS

N. B. Hunt		Pool		Blinebry		County		Lea								
2800 Thanksgiving Tower 1601 Elm Dallas, Texas 75201				TYPE OF TEST - (X)		SCHEDULED <input checked="" type="checkbox"/>		COMPLETION <input type="checkbox"/>		SPECIAL <input type="checkbox"/>						
LEASE NAME		WELL NO.	LOCATION			DATE OF TEST	CHOKE SIZE	TBG. PRESS.	DAILY ALLOW. ABLE	LENGTH OF TEST HOURS	PROD. DURING TEST				GAS - OIL RATIO CU.FT/BBLS.	
			U	S	T						R	WATER BBLS.	GRAV. OIL	OIL BBLS.		GAS M.C.F.
Weatherly, Mittie "E"		1	G	21	21S	37E	8-11-82	F32/64	150	41	24	0	0	0	196	-----
Weatherly, Mittie (*1)		3	C	21	21S	37E	5-04-82	F54/64	30	146	24	0	0	0	335	-----
Weatherly, Mittie		4	B	21	21S	37E	7-08-82	F32/64	90	17	24	1	35	16	300	18,750
Weatherly, Mittie		5	E	21	21S	37E	8-29-82	F26/64	110	1	24	0	36	7	245	35,000
Weatherly, Mittie		6	F	21	21S	37E	9-25-82	F24/64	35	12	24	0	35	12	100	8,333

(\*1)

Note: This well has been shut in from June through the present, so a more recent test was not possible.

No well will be assigned an allowable greater than the amount of oil produced on the official test.  
During gas-oil ratio test, each well shall be produced at a rate not exceeding the top unit allowable for the pool in which well is located by more than 25 percent. Operator is encouraged to take advantage of this 25 percent tolerance in order that well can be assigned increased allowable when authorized by the Division.  
Gas volume must be reported in MCF measured at a pressure base of 15.025 psia and a temperature of 60° F. Specific gravity base will be 0.80.  
Report casing pressure in lieu of tubing pressure for any well producing through casing.  
Well original and one copy of this report to the district office of the New Mexico Oil Conservation Division in accordance with Rule 301 and appropriate pool rules.

I hereby certify that the above information is true and complete to the best of my knowledge and belief.

*O. V. Stuckey*  
O. V. Stuckey (Signature)  
District Superintendent

October 18, 1982  
(Date)

*Revised to Dallas 10-18-82/JSB*

## GAS-OIL RATIO TESTS

Operator	N. B. Hunt		Pool	Drinkard		County	Lea								
Address	2800 Thanksgiving Tower 1601 Elm Dallas, Texas 75201					Type of Test - (X)	Scheduled <input checked="" type="checkbox"/> Special <input type="checkbox"/>								
LEASE NAME	WELL NO.	LOCATION			DATE OF TEST	CHOKE SIZE	TBG. PRESS.	DAILY ALLOW. ABL.	LENGTH OF TEST HOURS	PROD. DURING TEST			GAS - OIL RATIO CU. FT/3B		
		U	S	T	R					WATER BBL'S.	CRAY. OIL BBL'S.	OIL BBL'S.	GAS M.C.F.		
Weatherly, Mittie	6	F	21	21S	37E	9-27-82	F28/64	55	6	24	2	36	12	280	23.33

No well will be assigned an allowable greater than the amount of oil produced on the official test.

During gas-well ratio test, each well shall be produced at a rate not exceeding the top unit allowable for the pool in which well is located by more than 25 percent. Operator is encouraged to take advantage of this 25 percent tolerance in order that well can be assigned increased allowances when authorized by the Division.

Gas volumes must be reported in MCF measured at a pressure base of 15.025 psia and a temperature of 60° F. Specific gravity base will be 0.65.

Report casing pressure in lieu of tubing pressure for any well producing through casing.

Mail original and one copy of this report to the district office of the New Mexico Oil Conservation Division in accordance with Rule 301 and applicable pool rules.

I hereby certify that the above information is true and complete to the best of my knowledge and belief.

*O. V. Stuckey*  
O. V. Stuckey (Signature)  
District Superintendent

October 18, 1982  
(Date)

*Forwarded to O.C.D. 10-19-82*

TYPE OF REPORT - (X)

Initial Completion

Special

General Survey

STATE OF NEW MEXICO  
ENERGY AND MINERALS DEPARTMENT

OIL CONSERVATION DIVISION  
P. O. BOX 2088  
SANTA FE, NEW MEXICO 87501

Form C-124  
Revised 10-1-78

RESERVOIR PRESSURE REPORT

Operator N.B. Hunt		Pool Blinebry		County Lea		Date 1/27/83												
Address 406 North Big Spring St. Midland, Texas 79701		Producing Formation Blinebry		Oil Gradient - psf/ft.		Water Gradient - psf/ft.												
				Gas Gradient - psf/ft.		Datum Plane (-2400)												
LEASE	WELL NO.	LOCATION			ELEV.	DATE TESTED	IN TANK PRESS.	BOMB TEST DATA			SONIC INSTRUMENT TEST DATA*			PRESS. AT DATUM				
		U	S	T				R	TEST DEPTH	B.H. TEMP. °F	OB. SERVED PRESS.	PROD. TEST (BBL./DAY)	LIQUID LEVEL		LIQUID GRAD. TEST PSI/FT.	WT. OF LIQUID COL. PSI	WT. OF GAS COL. PSI	CSC. PRESS.
Mittie Weatherly	4	B	21	21	37	3458	0	1/26/83	48	363	5600	100	423					426
Mittie Weatherly	5	E	21	21	37	3485	0	1/26/83	48	346	5700	100	401					403
Mittie Weatherly	6	F	21	21	37	3458	0	1/26/83	48	327	5350	100	386					392

All depths plus or minus sea level; all pressures psi; Bomb shall be calibrated frequently enough against a dead weight tester to ensure an accuracy of one per cent; gas gravity shall be determined by analysis; liquid level shall be feet above datum plane. see RULE 302.

\* Well shall be produced at least 24 hours prior to shutting in for sonic test.

I hereby certify that the above information is true and complete to the best of my knowledge and belief.

JARREL SERVICES, INC.

*Paul A. Jarrell*

(Signature)

Agent

(Title)

January 27, 1983

(Date)

TYPE OF REPORT - (X)

TYPE OF REPORT ~ (X)	
Initial Completion	
Special	X
General Survey	

Operator	Pool	County	Date
N. B. Hunt	Blinebry	Lea	3/3/83

Address	Producing Formation	Oil Gradient	Water Gradient	Gas Gravity	Datum Plane (-3050)
406 N. Big Spring, Midland, Tx	Blinebry	psf/ft.	psf/ft.		

[illegible]

Mittie Weatherly


[illegible]

All depths plus or minus sea level; all pressures psi; Bomb shall be calibrated frequently enough against a dead weight tester to ensure an accuracy of one per cent; gas gravity shall be determined by analysis; liquid level shall be feet above datum plane. **SEE RULE 302.**

\* Well shall be produced at least 24 hours prior to shutting in for sonic test.

I hereby certify that the above information is true and complete to the best of my knowledge and belief.

I hereby certify that the above information is true and complete to the best of my knowledge and belief.

  
(Signature)

\_\_\_\_\_  
Acting District Engineer  
(Title)

\_\_\_\_\_  
3-3-83  
(Date)

Acting District Engineer

3-3-83

**(Dare)**