



R. E. Irelan
Division Manager
Production Department
Hobbs Division
North American Production

Conoco Inc.
P.O. Box 460
726 East Michigan
Hobbs, NM 88240
(505) 393-4141

April 27, 1987

New Mexico Oil Conservation Division
P. O. Box 2088
Santa Fe, NM 87504-2088

Attention Mr. Bill LeMay, Director

Dear Mr. LeMay:

Application to Downhole Commingle Hawk B-3 No. 16, Unit C, Section 3,
T-21S, R-37E, Lea County, New Mexico

Conoco Inc. respectfully requests approval to downhole commingle the
Blinebry Oil and Gas pool with the Drinkard.

Additional data relative to this commingling is listed below:

1. A lease plat is attached.
2. C-116's are included providing tests for each zone as well as the following test data requested by Jerry Sexton, NMOCD, Hobbs.

	<u>BO</u>	<u>BW</u>	<u>MCF</u>
3/7/87	5	6	61
3/8/87	5	3	58
3/9/87	5	4	59
3/21/87	8	1	69
3/22/87	8	2	69
3/23/87	9	2	60

3. Decline curves for each horizon are attached.
4. Shut-in bottomhole pressures are 362 psi for the Blinebry and 384 psi for the Drinkard.
5. Royalty and working interests are the same in both formations.

Blinebry
5732-5963
Drinkard
6697-6741

New Mexico Oil Conservation Division
Page 2
April 27, 1987

6. The quality of crude is identical and commingling will not reduce the commercial value. All production is Sweet Tier 2 oil. The value of the crude is as follows:

<u>Zone</u>	<u>Gravity</u>	<u>Value Per Barrel</u>
Blinebry Oil & Gas	40.1%	\$17.22
Drinkard	40.1%	\$17.22

7. The following allocation percentages are suggested based upon the ratio of production from each zone:

	<u>Oil</u>	<u>Gas</u>
Blinebry Oil & Gas	60%	65%
Drinkard	40%	35%

8. By copy of this letter we are notifying the Bureau of Land Management, Shell Oil Co. and Meridian Oil Co. as offset operators of the proposed commingling.

Yours very truly,



LRC:jr

Enclosure

cc: BLM-Carlsbad

Shell Oil Co. - Houston

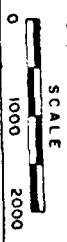
Meridian Oil Co. - Midland



PRODUCTION DEPARTMENT HOBBS DIVISION

NORTH BLINEBRY WATERFLOOD

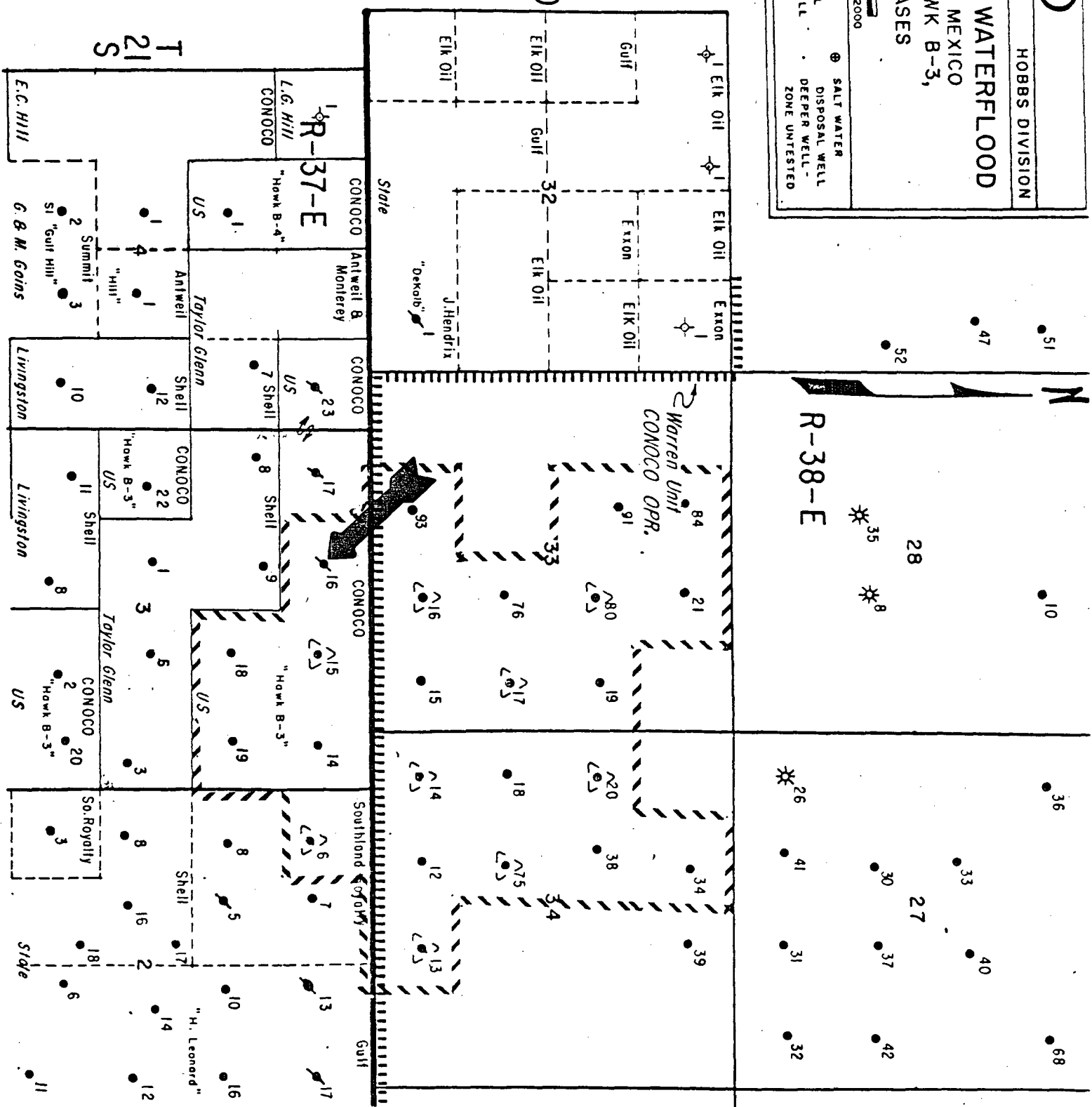
LEA COUNTY, NEW MEXICO
WARREN UNIT, HAWK B-3,
& STATE LEASES



- LEGEND:
- LOCATION
 - OIL WELL
 - * GAS WELL
 - ◇ DRY HOLE
 - △ INJECTION WELL
 - ✱ ABANDONED WELL
 - ✱✱ SHUT-IN WELL
 - ⊕ SALT WATER DISPOSAL WELL
 - DEEPER WELL - ZONE UNTESTED

INJECTOR
BOUNDARY OF
FLOOD AREA

T 20
S



**NEW MEXICO OIL CONSERVATION COMMISSION
GAS-OIL RATIO TESTS**


C-116
Revised 1-1-65

Operator Conoco Inc.		Pool Blinebry Oil & Gas		County Lea										
Address PO Box 460, Hobbs, NM 88240		TYPE OF TEST - (X)		Completion <input type="checkbox"/> Special <input checked="" type="checkbox"/>										
LEASE NAME Hawk B-3	WELL NO. 16	LOCATION			DATE OF TEST 3/23/87	CHOKE SIZE P	TBG. PRESS.	DAILY ALLOW-ABLE	LENGTH OF TEST HOURS 24	PROD. DURING TEST				GAS - OIL RATIO CU.FT./BBL.
		U	S	T						R	WATER BBLs.	GRAV. OIL	OIL BBLs.	
	C	3	21S	37E					24	2	40.1	9	60	6666

No well will be assigned an allowable greater than the amount of oil produced on the official test.
 During gas-oil ratio test, each well shall be produced at a rate not exceeding the top unit allowable for the pool in which well is located by more than 25 percent. Operator is encouraged to take advantage of this 25 percent tolerance in order that well can be assigned increased allowables when authorized by the Commission.
 Gas volumes must be reported in MCF measured at a pressure base of 15.025 psia and a temperature of 60° F. Specific gravity base will be 0.60.

Report casing pressure in lieu of tubing pressure for any well producing through casing.
 Mail original and one copy of this report to the district office of the New Mexico Oil Conservation Commission in accordance with Rule 301 and appropriate pool rules.

I hereby certify that the above information is true and complete to the best of my knowledge and belief.


 (Signature)
 Administrative Supervisor

April 24, 1987
 (Date)

C-116
Revised 1-1-65

No well will be assigned an allowable greater than the amount of oil produced on the official test.

During gas-oil ratio test, each well shall be produced at a rate not exceeding the top unit allowable for the pool in which well is located by more than 25 percent. Operator is encouraged to take advantage of this 25 percent tolerance in order that well can be assigned increased allowables when authorized by the Commission.

Gas volumes must be reported in MCF measured at a pressure base of 15.025 psia and a temperature of 60° F. Specific gravity base will be 0.60.

Report casing pressure in lieu of tubing pressure for any well producing through casing.

Mail original and one copy of this report to the district office of the New Mexico Oil Conservation Commission in accordance with Rule 301 and appropriate pool rules.

I hereby certify that the above information is true and complete to the best of my knowledge and belief.

Administrative Supervisor

(Title)

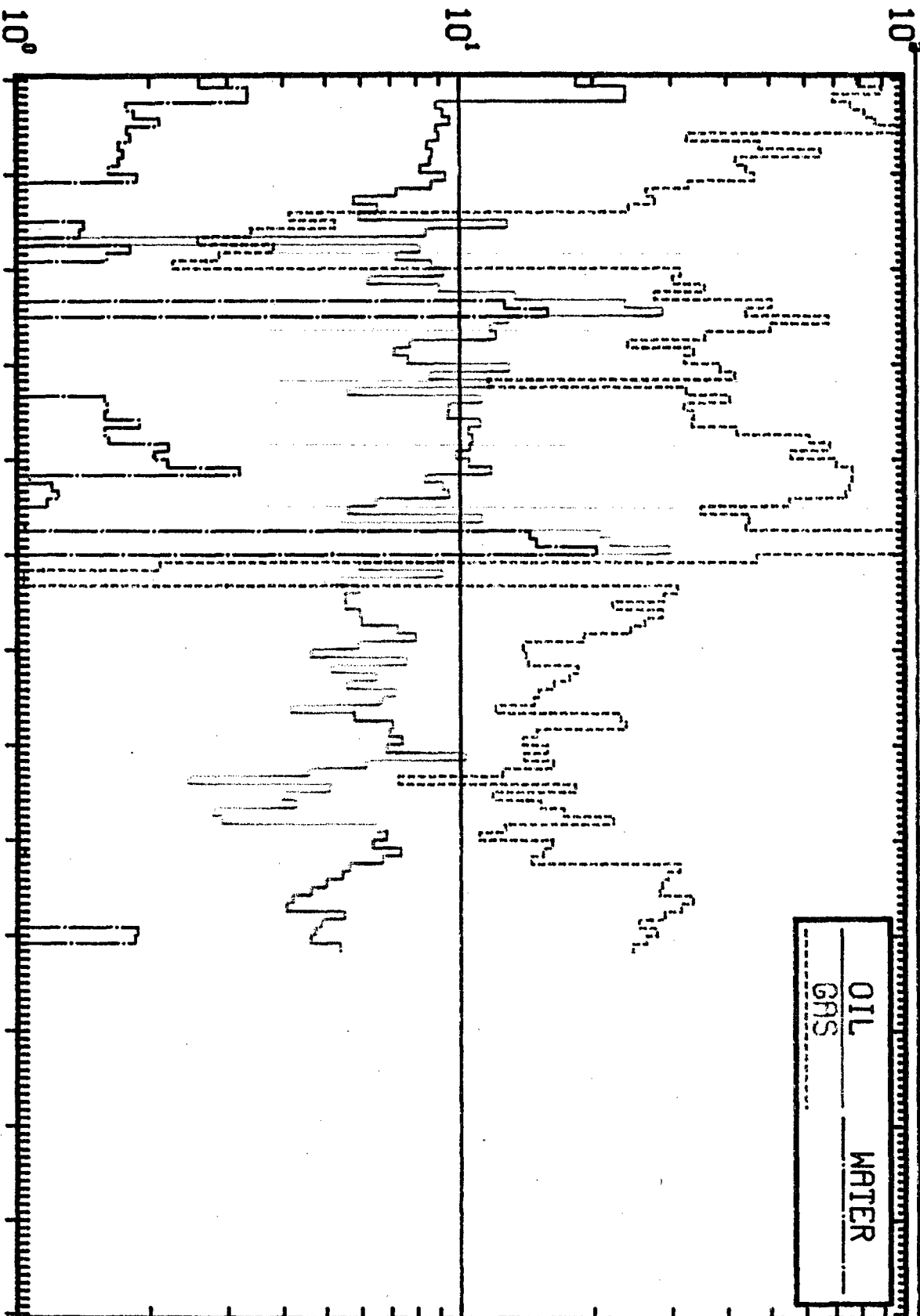
April 24, 1987

(Date)

HAWK B-3 NO. 16 - DRINKARD

PEG501 LIQUID & GAS PRODUCTION VS. TIME 04/02/87

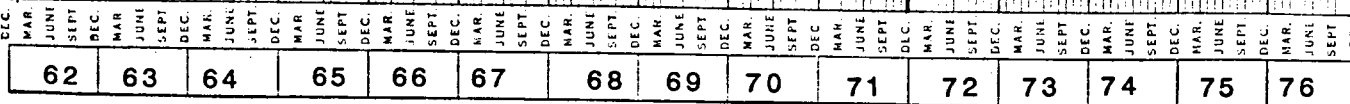
... BBL/DAY ... MCF/DAY ...



WELL POOL CODE: 1667V

1978 1979 1980 1981 1982 1983 1984 1985 1986 1987 1988 1989 1990

BLINEBRY POOL





STATE OF NEW MEXICO
ENERGY AND MINERALS DEPARTMENT

OIL CONSERVATION DIVISION

HOBBS DISTRICT OFFICE

RECEIVED
JUN 15 1987

6-12-87

OIL CONSERVATION DIVISION
SANTA FE

GARREY CARRUTHERS
GOVERNOR

POST OFFICE BOX 1980
HOBBS, NEW MEXICO 88241-1980
(505) 393-6161

OIL CONSERVATION DIVISION
P. O. BOX 2088
SANTA FE, NEW MEXICO 87501

RE: Proposed:

MC _____
DHC X _____
NSL _____
NSP _____
SWD _____
WFX _____
PMX _____

DHC - 653

Gentlemen:

I have examined the application for the:

Conoco Inc. Hawk B-3 #16C 3-21-87
Operator Lease & Well No. Unit S-T-R

and my recommendations are as follows:

OK J

Yours very truly,

Jerry Sexton
Jerry Sexton
Supervisor, District 1

/ed