

ABOVE THIS LINE FOR DIVISION USE ONLY

**NEW MEXICO OIL CONSERVATION DIVISION**  
 - Engineering Bureau -  
 1220 South St. Francis Drive, Santa Fe, NM 87505



COG  
 Foster Eddy # 33  
 6437

**ADMINISTRATIVE APPLICATION CHECKLIST**

THIS CHECKLIST IS MANDATORY FOR ALL ADMINISTRATIVE APPLICATIONS FOR EXCEPTIONS TO DIVISION RULES AND REGULATIONS WHICH REQUIRE PROCESSING AT THE DIVISION LEVEL IN SANTA FE

**Application Acronyms:**

- [NSL-Non-Standard Location] [NSP-Non-Standard Proration Unit] [SD-Simultaneous Dedication]**
- [DHC-Downhole Commingling] [CTB-Lease Commingling] [PLC-Pool/Lease Commingling]**
- [PC-Pool Commingling] [OLS - Off-Lease Storage] [OLM-Off-Lease Measurement]**
- [WFX-Waterflood Expansion] [PMX-Pressure Maintenance Expansion]**
- [SWD-Salt Water Disposal] [IPI-Injection Pressure Increase]**
- [EOR-Qualified Enhanced Oil Recovery Certification] [PPR-Positive Production Response]**

- [1] **TYPE OF APPLICATION** - Check Those Which Apply for [A]
- [A] Location - Spacing Unit - Simultaneous Dedication  
 NSL  NSP  SD
- Check One Only for [B] or [C]
- [B] Commingling - Storage - Measurement  
 DHC  CTB  PLC  PC  OLS  OLM
- [C] Injection - Disposal - Pressure Increase - Enhanced Oil Recovery  
 WFX  PMX  SWD  IPI  EOR  PPR
- [D] Other: Specify \_\_\_\_\_
- [2] **NOTIFICATION REQUIRED TO:** - Check Those Which Apply, or  Does Not Apply INTEREST ARE THE SAME
- [A]  Working, Royalty or Overriding Royalty Interest Owners
- [B]  Offset Operators, Leaseholders or Surface Owner
- [C]  Application is One Which Requires Published Legal Notice
- [D]  Notification and/or Concurrent Approval by BLM or SLO  
U.S. Bureau of Land Management - Commissioner of Public Lands, State Land Office
- [E]  For all of the above, Proof of Notification or Publication is Attached, and/or,
- [F]  Waivers are Attached

[3] **SUBMIT ACCURATE AND COMPLETE INFORMATION REQUIRED TO PROCESS THE TYPE OF APPLICATION INDICATED ABOVE.**

[4] **CERTIFICATION:** I hereby certify that the information submitted with this application for administrative approval is **accurate** and **complete** to the best of my knowledge. I also understand that **no action** will be taken on this application until the required information and notifications are submitted to the Division.

**Note: Statement must be completed by an individual with managerial and/or supervisory capacity.**

Kelly J. Holly Print or Type Name	 Signature	Permitting Tech Title	7-14-11 Date
(432) 685-4384 Phone Number		kholly@conchoresources.com E-mail Address	

**Foster Eddy #33  
Eddy County, NM**

Cedar Lake; Glorieta-Yeso oil well  
TD of approximately 6400'  
Non-standard location  
2166' FNL & 315' FEL      Sec 17, T17S, R31E, Unit H

**This well had to be drilled at a non-standard location due to being too close to an Arch site.**

The plan for this well is to complete it in the Yeso formation.  
We won't know the exact perms until we drill & log it, but it will be similar to the

Willow State #8  
330 FSL & 1650 FEL, Section 16, T17S, R31E, UL O  
drilled in March 2006

The Willow State #8 Yeso completion has overall perforations from 5380.5' – 5845.5', but is divided into 2 perf/stimulation intervals. At this time, we assume the Skelly Unit 971 will be very similar.

1<sup>st</sup> Interval: 5650' – 5845.5', 67 total holes.  
acidized w/ 2265 gals acid,  
frac'd w/ 8000# LiteProp, 30,000 gals 30# gel, 54,663 gals 40# gel, & 90,560# 16/30 sand

2<sup>nd</sup> Interval: 5380.5' – 5544', 56 total holes.  
acidized w/ 2550 gals acid,  
frac'd w/ 8006# LiteProp, 30,000 gals 30# gel, 53,000 gals 40# gel, & 91,740# 16/30 sand

3<sup>rd</sup> interval: 5650' – 5845.5'  
acidized w/ 2265 gals  
frac w/ 84,663 gals gel, 8000# LiteProp, & 90,560# 16/30 white sand.

**Attachment 1**  
Plat and map

**Attachment 2**  
Map and legend of offset wells.

**Attachment 3**  
Updated land plat showing that COG Operating LLC owns offset acreage.

The acreage we are encroaching is the SW/4 NW/4 and NW/4 SW/4 of Section 16.

Offset acreage is owned by COG Operating LLC.

COG Operating LLC respectfully requests permission to have this NSL approved.

DISTRICT I  
1625 N. FRENCH DR., HOBBS, NM 88240

State of New Mexico  
Energy, Minerals and Natural Resources Department

Form C-102

DISTRICT II  
1301 W. GRAND AVENUE, ARTESIA, NM 88210

OIL CONSERVATION DIVISION  
1330 SOUTH ST. FRANCIS DR.  
Santa Fe, New Mexico 87505

Revised October 12, 2005  
Submit to Appropriate District Office  
State Lease - 4 Copies  
Fee Lease - 3 Copies

DISTRICT III  
1000 RIO BRAZOS RD., AZTEC, NM 87410

DISTRICT IV  
1330 S. ST. FRANCIS DR., SANTA FE, NM 87505

WELL LOCATION AND ACREAGE DEDICATION PLAT

AMENDED REPORT

API Number 30-015	Pool Code 96831	Pool Name Cedar Lake; Glorieta-Yeso
Property Code 308142	Property Name FOSTER EDDY	Well Number 33
OGRID No. 229137	Operator Name COG OPERATING, LLC	Elevation 3733'

Surface Location

UL or lot No.	Section	Township	Range	Lot Idn	Feet from the	North/South line	Feet from the	East/West line	County
H	17	17-S	31-E		2166	NORTH	315	EAST	EDDY

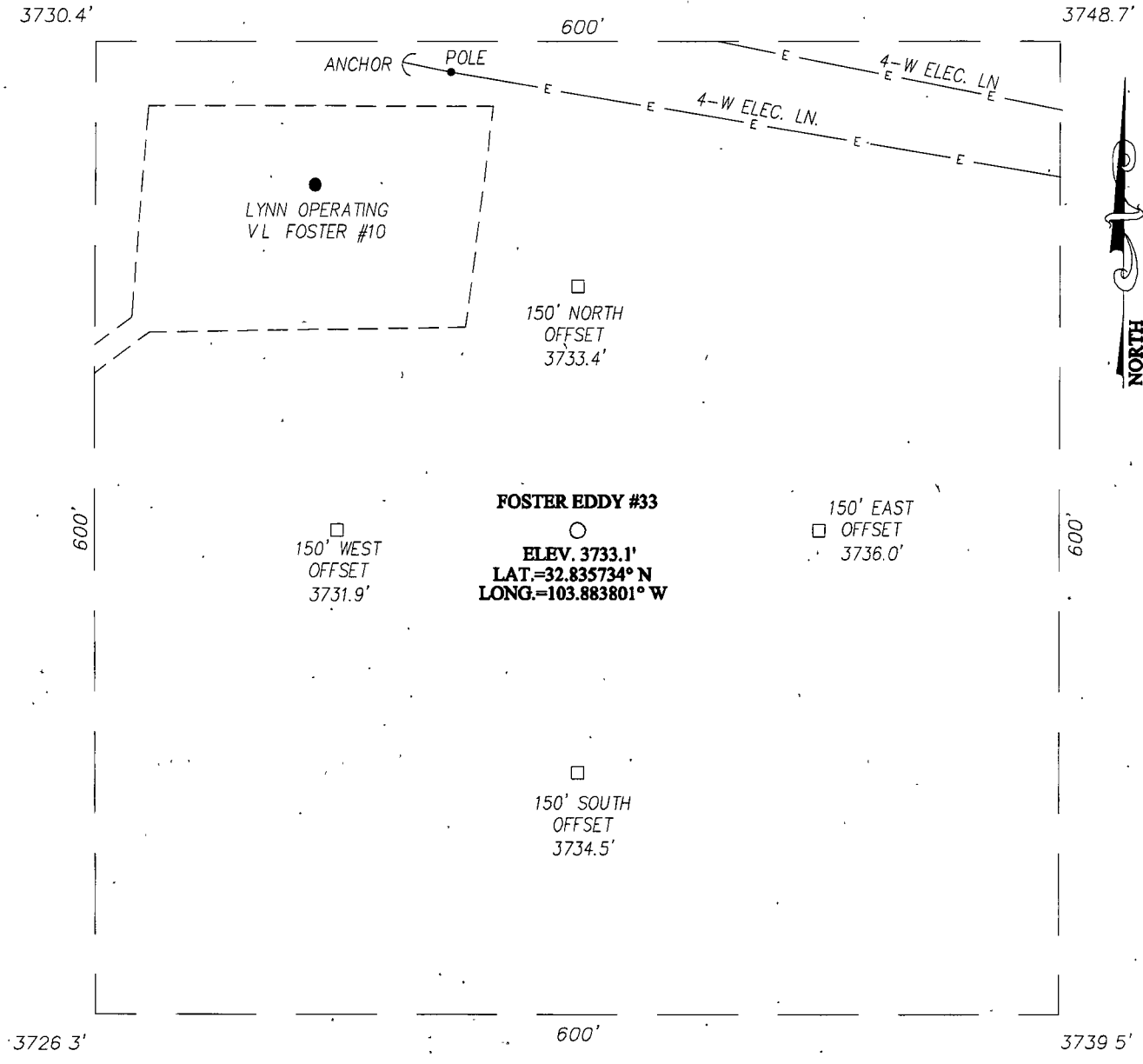
Bottom Hole Location If Different From Surface

UL or lot No.	Section	Township	Range	Lot Idn	Feet from the	North/South line	Feet from the	East/West line	County
Dedicated Acres		Joint or Infill		Consolidation Code		Order No.			

NO ALLOWABLE WILL BE ASSIGNED TO THIS COMPLETION UNTIL ALL INTERESTS HAVE BEEN CONSOLIDATED  
OR A NON-STANDARD UNIT HAS BEEN APPROVED BY THE DIVISION

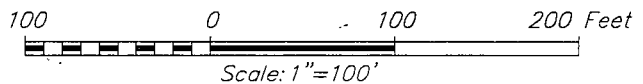
<p>DETAIL</p> <p>3730.4' 3748.7' 600' 3726.3' 3739.5'</p>	<p>GEODETIC COORDINATES NAD 27 NME</p> <p>SURFACE LOCATION Y=668044.7 N X=638074.4 E</p> <p>LAT = 32 835734' N LONG. = 103 883801' W</p>	<p>2166'</p> <p>S.L. 315'</p> <p>SEE DETAIL</p>	<p><b>OPERATOR CERTIFICATION</b></p> <p>I hereby certify that the information herein is true and complete to the best of my knowledge and belief, and that this organization either owns a working interest or unleased mineral interest in the land including the proposed bottom hole location or has a right to drill this well at this location pursuant to a contract with an owner of such mineral or working interest, or to a voluntary pooling agreement or a compulsory pooling order heretofore entered by the division.</p> <p><i>Kelly J. Holly</i> 12-30-10 Signature Date</p> <p>Kelly J. Holly Printed Name</p>
			<p><b>SURVEYOR CERTIFICATION</b></p> <p>I hereby certify that the well location shown on this plat was plotted from field notes of actual surveys made by me or under my supervision, and that the same is true and correct to the best of my belief.</p> <p>DECEMBER 27, 2010</p> <p>Date Surveyed: _____ LA</p> <p>Signature &amp; Seal of 39 Professional Surveyor</p> <p><i>Ronald J. Eidson</i> 12/27/2010</p> <p>10-MAN-888</p>
<p>Certificate No. GARY G EIDSON 12641 RONALD J. EIDSON 3239</p>			


SECTION 17, TOWNSHIP 17 SOUTH, RANGE 31 EAST, N.M.P.M.  
 EDDY COUNTY NEW MEXICO



DIRECTIONS TO LOCATION

FROM THE INTERSECTION OF U.S. HWY. #82 AND CO RD. #223 (SWEET GUM RD.), GO NORTH ON CO. RD. #223 APPROX. 1.3 MILES. TURN LEFT AND GO WEST APPROX. 1.0 MILE. TURN RIGHT AND GO NORTHEAST APPROX. 0.5 MILES TO THE VL FOSTER #10 WELL PAD. THE LOCATION STAKE IS 268 FEET SOUTHEAST OF EXISTING WELL.




 PROVIDING SURVEYING SERVICES  
 SINCE 1946  
**JOHN WEST SURVEYING COMPANY**  
 412 N. DAL PASO  
 HOBBS, N.M. 88240  
 (575) 393-3117

<b>COG OPERATING, LLC</b>			
FOSTER EDDY #33 WELL LOCATED 2166 FEET FROM THE NORTH LINE AND 315 FEET FROM THE EAST LINE OF SECTION 17, TOWNSHIP 17 SOUTH, RANGE 31 EAST, N.M.P.M., EDDY COUNTY, NEW MEXICO			
Survey Date:	12/3/10	Sheet	1 of 1 Sheets
W.O. Number.	10.11.1666	Dr By:	LA Rev 1.
Date:	12/22/10	1011666	Scale: 1"=100'

## Producing Wells in Sec 17, T17S, R31E

API#	Operator	Lease	Well#	County	Legal	Total Depth	Well Type	Well Status	First Prod.	Last Prod.	Avg. (BO/D)
30-015-05179	DEVON ENERGY PRODUCTION COMPANY, LP	HUDSON FEDERAL	003	EDDY	S:17, T:17S, R:31E	0	O	Pumping	Jan 1947	Jan 1999	0.00
30-015-05180		HUDSON	004	EDDY	S:17, T:17S, R:31E		O	Active	Jan 1947	Dec 1978	0.00
30-015-05201	WEIER DRILLING	FOSTER	002	EDDY	S:17, T:17S, R:31E	0	O	Shut-in	Jan 1950	Dec 1965	0.00
30-015-05206	WEIER DRILLING CO	FOSTER FED	007	EDDY	S:17, T:17S, R:31E	0	O	Active	Jan 1959	Dec 1965	0.00
30-015-05196	MARBOB ENERGY CORP	FOSTER EDDY	002	EDDY	S:17, T:17S, R:31E	0	O	Active	Jan 1947	Apr 2003	0.03
30-015-05201	LINN OPERATING, INC.	V L FOSTER	002	EDDY	S:17, T:17S, R:31E	0	O	Shut-in	Jan 1956	Sep 1997	0.03
30-015-28969	MARBOB ENERGY CORP	FAIR 17 FEDERAL	001	EDDY	S:17, T:17S, R:31E	12,750	PO	Active	Sep 2005	Feb 2008	0.21
30-015-05194	LINN OPERATING, INC.	TURNER B	040	EDDY	S:17, T:17S, R:31E		O	Temporarily Abandoned	Jan 1954	Sep 1967	0.27
30-015-05195		FOSTER EDDY	004	EDDY	S:17, T:17S, R:31E		O	Active	Jan 1947	Sep 1966	0.27
30-015-05189	SANDRIDGE EXPLORATION AND PRODUCTION, LLC	SUPERIOR FOSTER	003	EDDY	S:17, T:17S, R:31E	0	O	Active	Jan 1954	Jul 2010	0.35
30-015-05197	MARBOB ENERGY CORP	FOSTER EDDY	003	EDDY	S:17, T:17S, R:31E	0	O	Active	Jan 1947	Dec 2001	0.42
30-015-05194	SINCLAIR OIL AND GAS CO	TURNER B	040	EDDY	S:17, T:17S, R:31E		O	Temporarily Abandoned	Mar 1953	Dec 1965	0.42
30-015-05202	MERIT ENERGY COMPANY, LLC	V L FOSTER	003	EDDY	S:17, T:17S, R:31E		PO	Active	Jan 1950	Jan 2007	0.48
30-015-05187	TRINITY UNIVERSITY & CLOSUIT	SUPERIOR FOSTER	001	EDDY	S:17, T:17S, R:31E	0	O	Pumping	Jan 1947	Jan 1990	0.52
30-015-05188	SANDRIDGE EXPLORATION AND PRODUCTION, LLC	SUPERIOR FOSTER	002	EDDY	S:17, T:17S, R:31E	0	O	Active	Jan 1947	Jul 2010	0.55
					S:17,						

30-015-05181	LINN OPERATING, INC.	TURNER B	001	EDDY	T:17S, R:31E	0	O	Active	Jan 1947	Sep 2010	0.67
30-015-05187	TRINITY UNIVERSITY & CLOSUIT	SUPERIOR FOSTER	001	EDDY	S:17, T:17S, R:31E	0	O	Pumping	Jan 1967	Aug 1977	0.71
30-015-05205	RAY WESTALL	V L FOSTER	006	EDDY	S:17, T:17S, R:31E	0	I	Injection Well	Jul 1963	Jan 1992	0.71
30-015-32580	MARBOB ENERGY CORP	OXY PISTACHIO RSG FEDERAL	17	EDDY	S:17, T:17S, R:31E	11,920	O	Active	Feb 2004	Nov 2008	0.73
30-015-00000		V L FOSTER	001	EDDY	S:17, T:17S, R:31E		O	Active	Aug 1949	Oct 1978	0.74
30-015-05190	SINCLAIR OIL AND GAS CO	TURNER B	031	EDDY	S:17, T:17S, R:31E		O	Temporarily Abandoned	Nov 1951	Dec 1971	0.77
30-015-32580	MARBOB ENERGY CORP	OXY PISTACHIO RSG FEDERAL	17	EDDY	S:17, T:17S, R:31E	11,920	O	Active	Jan 2008	May 2009	0.77
30-015-05190	LINN OPERATING, INC.	TURNER B	031	EDDY	S:17, T:17S, R:31E		O	Temporarily Abandoned	Jan 1954	Feb 1973	0.93
30-015-05193	LINN OPERATING, INC.	TURNER B	037	EDDY	S:17, T:17S, R:31E		O	Temporarily Abandoned	Jan 1954	Sep 1967	0.93
30-015-05207		FOSTER	008	EDDY	S:17, T:17S, R:31E	5,580	O	Active	Jul 1954	Jan 1958	0.97
30-015-05203	LINN OPERATING, INC.	V L FOSTER	004	EDDY	S:17, T:17S, R:31E		O	Shut-in	Jan 1959	Jan 1999	1.03
30-015-05189	MURCHISON & CLOSUIT	SUPERIOR FOSTER	003	EDDY	S:17, T:17S, R:31E	0	O	Active	Sep 1950	Dec 1971	1.06
30-015-05204	WEIER DRILLING CO.	FOSTER A	005	EDDY	S:17, T:17S, R:31E		O	Active	Mar 1951	Dec 1953	1.06
30-015-05191	SINCLAIR OIL AND GAS CO	TURNER B	032	EDDY	S:17, T:17S, R:31E		O	Temporarily Abandoned	Nov 1951	Dec 1971	1.10
30-015-05193	SINCLAIR OIL AND GAS CO	TURNER B	037	EDDY	S:17, T:17S, R:31E		O	Temporarily Abandoned	Nov 1952	Dec 1965	1.16
30-015-05192	SINCLAIR OIL AND GAS CO	TURNER B	035	EDDY	S:17, T:17S, R:31E	0	O	Pumping	Dec 1951	Dec 1971	1.19
30-015-26230	MARBOB ENERGY CORP	FOSTER EDDY	007	EDDY	S:17, T:17S, R:31E	0	PO	Pumping	Jan 1993	Aug 2010	1.23
					S:17,						

30-015-05201	SUN OIL COMPANY	V L FOSTER	002	EDDY	T:17S, R:31E	0	O	Shut-in	Jan 1971	Dec 1971	1.23
30-015-05188	MURCHISON & CLOSUIT	SUPERIOR	002	EDDY	S:17, T:17S, R:31E	0	O	Active	Jan 1948	Dec 1965	1.32
30-015-26187	MARBOB ENERGY CORP	FOSTER EDDY	008	EDDY	S:17, T:17S, R:31E	6,035	PO	Pumping	Jan 1993	Aug 2010	1.45
30-015-28969	MARBOB ENERGY CORP	FAIR 17 FEDERAL	001	EDDY	S:17, T:17S, R:31E	12,750	PO	Active	Sep 2003	Jan 2004	1.45
30-015-28791	LINN OPERATING, INC.	TURNER B	116	EDDY	S:17, T:17S, R:31E	3,800	O	Pumping	Apr 1996	Sep 2010	1.57
30-015-20073		HUDSON	005	EDDY	S:17, T:17S, R:31E	3,510	O	Active	Jun 1987	Dec 1993	1.58
30-015-32580	MARBOB ENERGY CORP		17	EDDY	S:17, T:17S, R:31E	11,920	O	Active	Feb 2004	May 2009	1.58
30-015-29400	LINN OPERATING, INC.	V L FOSTER	008	EDDY	S:17, T:17S, R:31E	3,834	O	Pumping	Sep 1997	Sep 2010	1.60
30-015-05184	MERIT ENERGY COMPANY, LLC	TURNER B	005	EDDY	S:17, T:17S, R:31E		PI	Active	Jan 1947	Dec 1969	1.61
30-015-25981	MARBOB ENERGY CORP	FOSTER EDDY	006	EDDY	S:17, T:17S, R:31E	5,540	PO	Pumping	Jul 1989	Aug 2010	1.68
30-015-20073	LINN OPERATING, INC.	HUDSON FEDERAL	005	EDDY	S:17, T:17S, R:31E	3,510	O	Active	Jan 1993	Sep 2010	1.83
30-015-05204	WIER DRILLING CO.	FOSTER	005	EDDY	S:17, T:17S, R:31E		O	Active	Jan 1952	Apr 1955	1.87
30-015-05206	WEIER DRILLING CO.	FOSTER A	007	EDDY	S:17, T:17S, R:31E	0	O	Active	Dec 1951	Dec 1951	1.94
30-015-05187	MURCHISON & CLOSUIT	SUPERIOR	001	EDDY	S:17, T:17S, R:31E	0	O	Pumping	Jan 1948	Dec 1965	1.94
30-015-05181	MERIT ENERGY COMPANY, LLC	TURNER B	001	EDDY	S:17, T:17S, R:31E	0	O	Active	Jan 1970	Dec 1977	2.00
30-015-05206	LINN OPERATING, INC.	V L FOSTER	007	EDDY	S:17, T:17S, R:31E	0	O	Active	Jan 1959	Sep 2010	2.10
30-015-05202	MERIT ENERGY COMPANY, LLC	V L FOSTER	003	EDDY	S:17, T:17S, R:31E		PO	Active	Jan 1959	Apr 1972	2.13
					S:17,						

30-015-28969	MARBOB ENERGY CORP	FAIR 17 FEDERAL	001	EDDY	T:17S, R:31E	12,750	PO	Active	Sep 2002	Jan 2003	2.13
30-015-05202	WEIER DRILLING COMPANY	FOSTER A	003	EDDY	S:17, T:17S, R:31E		PO	Active	Jan 1953	Dec 1965	2.13
30-015-29648	LINN OPERATING, INC.	V L FOSTER	011	EDDY	S:17, T:17S, R:31E	3,792	O	Pumping	Oct 1997	Sep 2010	2.23
30-015-31251	LINN OPERATING, INC.	HUDSON FEDERAL	014	EDDY	S:17, T:17S, R:31E	3,750	O	Pumping	Aug 2000	Sep 2010	2.30
30-015-05199	MARBOB ENERGY CORP	FOSTER EDDY	005	EDDY	S:17, T:17S, R:31E	0	O	Pumping	Jan 1947	Aug 2010	2.74
30-015-05188	WISER OIL CO (THE)	SUPERIOR FOSTER	002	EDDY	S:17, T:17S, R:31E	0	O	Active	Jan 1967	Dec 1977	2.84
30-015-28969	MARBOB ENERGY CORP	FAIR 17 FEDERAL	001	EDDY	S:17, T:17S, R:31E	12,750	PO	Active	Feb 2004	Aug 2005	2.84
30-015-00000	SUNRAY	FOSTER	005	EDDY	S:17, T:17S, R:31E		O	Active	Jan 1949	Dec 1951	2.90
30-015-05205	WEIER DRILLING CO.	FOSTER A	006	EDDY	S:17, T:17S, R:31E	0	I	Injection Well	Feb 1951	Dec 1957	2.90
30-015-00000	SUNRAY	FOSTER	004	EDDY	S:17, T:17S, R:31E		O	Active	Jan 1949	Dec 1951	3.10
30-015-26230	MARBOB ENERGY CORP	FOSTER EDDY	007	EDDY	S:17, T:17S, R:31E	0	PO	Pumping	Feb 2009	Aug 2010	3.39
30-015-29646	LINN OPERATING, INC.	V L FOSTER	009	EDDY	S:17, T:17S, R:31E	3,814	O	Pumping	Oct 1997	Sep 2010	3.50
30-015-31062	LINN OPERATING, INC.	TURNER B	127	EDDY	S:17, T:17S, R:31E	3,700	O	Pumping	Aug 2000	Sep 2010	3.50
30-015-05203	WEIER DRILLING CO.	FOSTER	004	EDDY	S:17, T:17S, R:31E		O	Shut-in	Jan 1950	Dec 1965	3.55
30-015-05199	MARBOB ENERGY CORP	FOSTER EDDY	005	EDDY	S:17, T:17S, R:31E	0	O	Pumping	Jan 1959	Dec 1977	3.94
30-015-26187	MARBOB ENERGY CORP	FOSTER EDDY	008	EDDY	S:17, T:17S, R:31E	6,035	PO	Pumping	Feb 2009	Aug 2010	3.97
30-015-00000	WEIER DRILLING CO.	FOSTER FEDERAL	001	EDDY	S:17, T:17S, R:31E		O	Active	Sep 1965	Sep 1965	4.07
					S:17,						



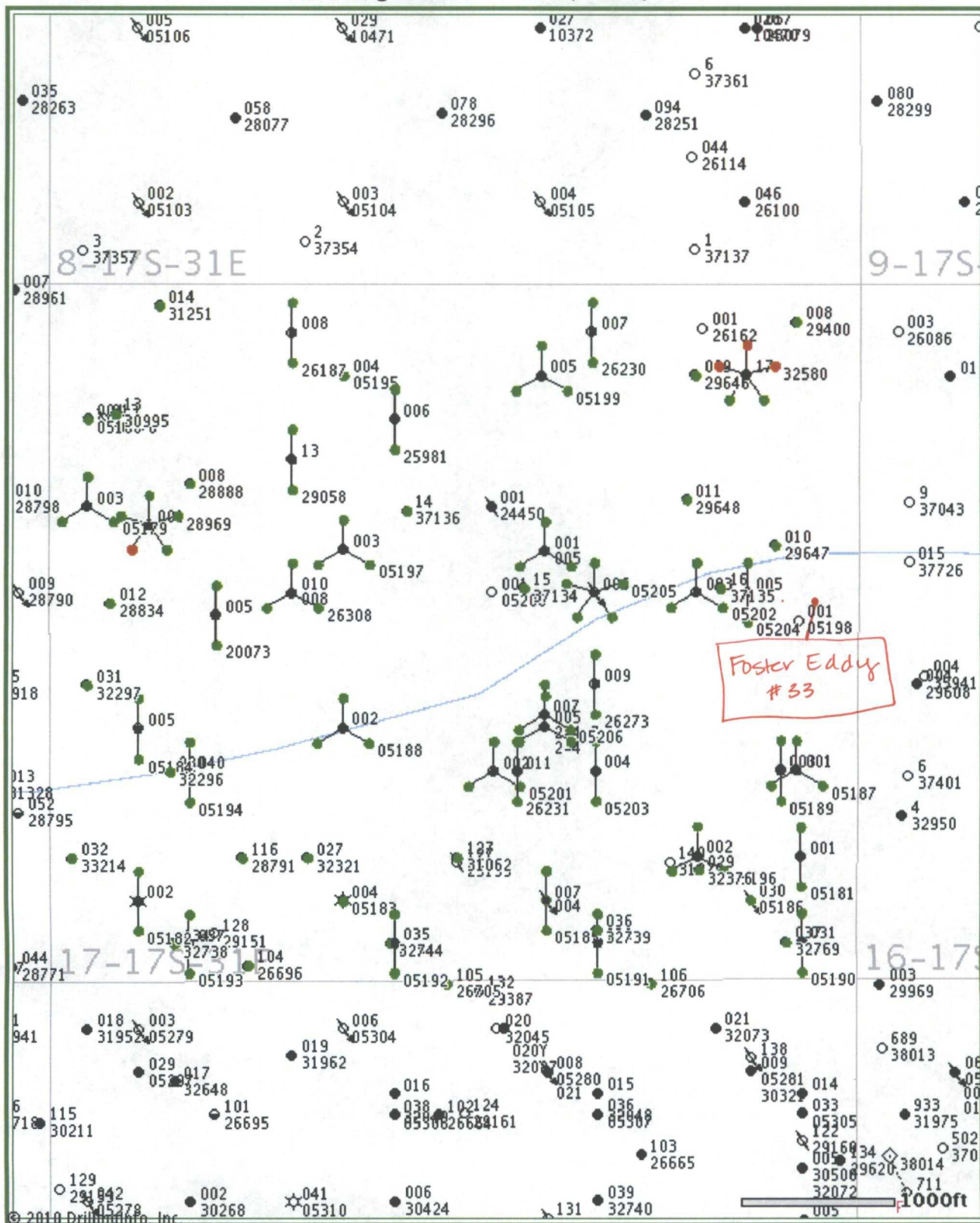
30-015-28888	LINN OPERATING, INC.	HUDSON FEDERAL	008	EDDY	T:17S, R:31E	3,870	O	Pumping	Jun 1996	Sep 2010	4.17
30-015-26231	MARBOB ENERGY CORP	FOSTER EDDY	011	EDDY	S:17, T:17S, R:31E	5,600	PO	Pumping	Jan 1993	Aug 2010	4.23
30-015-26308	MARBOB ENERGY CORP	FOSTER EDDY	010	EDDY	S:17, T:17S, R:31E	0	PO	Pumping	Feb 1992	Aug 2010	4.23
30-015-05205		FOSTER	006	EDDY	S:17, T:17S, R:31E	0	I	Injection Well	Jan 1952	Dec 1965	4.29
30-015-05205	WEIER DRILLING CO	FOSTER FEDERAL	006	EDDY	S:17, T:17S, R:31E	0	I	Injection Well	Jan 1965	Dec 1965	4.29
30-015-30995	LINN OPERATING, INC.	HUDSON FEDERAL	13	EDDY	S:17, T:17S, R:31E	3,750	O	Pumping	Aug 2000	Sep 2010	4.33
30-015-29647	LINN OPERATING, INC.	V L FOSTER	010	EDDY	S:17, T:17S, R:31E	3,892	O	Pumping	Oct 1997	Sep 2010	4.37
30-015-00000	WIER DRILLING CO.	FOSTER	2-4-7	EDDY	S:17, T:17S, R:31E		O	Active	Jan 1952	Dec 1957	4.55
30-015-05196	SUNRAY OIL CORP.	FOSTER	002	EDDY	S:17, T:17S, R:31E	0	O	Active	Jan 1948	Dec 1957	4.58
30-015-05199	SUNRAY OIL CO.	FOSTER	005	EDDY	S:17, T:17S, R:31E	0	O	Pumping	Jan 1948	Dec 1957	4.68
30-015-25981	MARBOB ENERGY CORP	FOSTER EDDY	006	EDDY	S:17, T:17S, R:31E	5,540	PO	Pumping	Feb 2009	Aug 2010	4.68
30-015-28834	LINN OPERATING, INC.	HUDSON FEDERAL	012	EDDY	S:17, T:17S, R:31E	3,852	O	Pumping	May 1996	Sep 2010	4.70
30-015-05184	MERIT ENERGY COMPANY, LLC	TURNER B	005	EDDY	S:17, T:17S, R:31E		PI	Active	Jan 1967	Dec 1967	4.84
30-015-05197	SUNRAY OIL CO.	FOSTER	003	EDDY	S:17, T:17S, R:31E	0	O	Active	Jan 1948	Dec 1957	5.39
30-015-26705	DEVON ENERGY PRODUCTION COMPANY, LP	TURNER B	105	EDDY	S:17, T:17S, R:31E	3,794	O	Pumping	Jan 1993	Feb 1995	5.61
30-015-32580	WEIER DRILLING COMPANY	FOSTER	17	EDDY	S:17, T:17S, R:31E	11,920	O	Active	Jan 1954	Dec 1957	6.16
30-015-26273	MARBOB ENERGY CORP	FOSTER EDDY	009	EDDY	S:17, T:17S, R:31E	5,560	PO	Pumping	Jan 1993	Aug 2010	6.35
					S:17,						

30-015-05179	ASTON & FAIR	HUDSON	003	EDDY	T:17S, R:31E	0	O	Pumping	Jan 1948	Dec 1971	7.77
30-015-26696	LINN OPERATING, INC.	TURNER B	104	EDDY	S:17, T:17S, R:31E	3,648	O	Pumping	Jul 1992	Sep 2010	7.90
30-015-26706	LINN OPERATING, INC.	TURNER B	106	EDDY	S:17, T:17S, R:31E	3,863	O	Pumping	Jan 1993	Sep 2010	9.20
30-015-29058	MARBOB ENERGY CORP	FOSTER EDDY	13	EDDY	S:17, T:17S, R:31E	5,710	O	Pumping	Feb 2009	Aug 2010	10.00
30-015-05196	MARBOB ENERGY CORP	FOSTER EDDY	002	EDDY	S:17, T:17S, R:31E	0	O	Active	Jan 1959	Dec 1977	10.23
30-015-05179	DEVON ENERGY PRODUCTION COMPANY, LP	HUDSON FEDERAL	003	EDDY	S:17, T:17S, R:31E	0	O	Pumping	Jan 1954	Dec 1977	10.65
30-015-26308	MARBOB ENERGY CORP	FOSTER EDDY	010	EDDY	S:17, T:17S, R:31E	0	PO	Pumping	Feb 2009	Aug 2010	11.32
30-015-26231	MARBOB ENERGY CORP	FOSTER EDDY	011	EDDY	S:17, T:17S, R:31E	5,600	PO	Pumping	Feb 2009	Aug 2010	11.32
30-015-28969	MARBOB ENERGY CORP	FAIR 17 FEDERAL	001	EDDY	S:17, T:17S, R:31E	12,750	PO	Active	Feb 2003	Jul 2003	13.06
30-015-05205	RAY WESTALL	V L FOSTER	006	EDDY	S:17, T:17S, R:31E	0	I	Injection Well	Apr 1972	Dec 1972	15.26
30-015-32376	MARBOB ENERGY CORP	LEE FEDERAL	029	EDDY	S:17, T:17S, R:31E	5,316	O	Active	Nov 2002	Aug 2010	16.45
30-015-29058	MARBOB ENERGY CORP	FOSTER EDDY	13	EDDY	S:17, T:17S, R:31E	5,710	O	Pumping	Jan 1997	Nov 2008	17.03
30-015-26273	MARBOB ENERGY CORP	FOSTER EDDY	009	EDDY	S:17, T:17S, R:31E	5,560	PO	Pumping	Feb 2009	Aug 2010	17.32
30-015-05185	MERIT ENERGY COMPANY, LLC	TURNER B	007	EDDY	S:17, T:17S, R:31E	0	I	Injection Well	Jan 1967	Dec 1977	17.35
30-015-32744	MARBOB ENERGY CORP	LEE FEDERAL	035	EDDY	S:17, T:17S, R:31E	5,233	O	Active	Jul 2003	Aug 2010	17.42
30-015-00000	WEIER DRILLING CO.	FOSTER	'2-4	EDDY	S:17, T:17S, R:31E		O	Active	Oct 1949	Dec 1951	18.00
30-015-00000	WEIER DRILLING CO.	FOSTER	005	EDDY	S:17, T:17S, R:31E		O	Active	Jan 1950	Dec 1950	18.23
					S:17,						

30-015-33214	MARBOB ENERGY CORP	LEE FEDERAL	032	EDDY	T:17S, R:31E	5,230	O	Active	Apr 2004	Aug 2010	18.39
30-015-05191	LINN OPERATING, INC.	TURNER B	032	EDDY	S:17, T:17S, R:31E		O	Temporarily Abandoned	Jan 1954	Dec 1992	20.42
30-015-32296	MARBOB ENERGY CORP	LEE FEDERAL	030	EDDY	S:17, T:17S, R:31E	5,260	O	Active	Apr 2003	Aug 2010	21.29
30-015-32738	MARBOB ENERGY CORP	LEE FEDERAL	034	EDDY	S:17, T:17S, R:31E	5,206	O	Active	Jun 2003	Aug 2010	21.29
30-015-05197	MARBOB ENERGY CORP	FOSTER EDDY	003	EDDY	S:17, T:17S, R:31E	0	O	Active	Jan 1959	Dec 1977	24.48
30-015-32297	MARBOB ENERGY CORP	LEE FEDERAL	031	EDDY	S:17, T:17S, R:31E	5,280	O	Active	May 2003	Aug 2010	25.16
30-015-32739	MARBOB ENERGY CORP	LEE FEDERAL	036	EDDY	S:17, T:17S, R:31E	5,260	O	Active	Jul 2003	Aug 2010	25.16
30-015-32769	MARBOB ENERGY CORP	LEE FEDERAL	037	EDDY	S:17, T:17S, R:31E	5,281	O	Active	Aug 2003	Aug 2010	25.16
30-015-05192	DEVON ENERGY PRODUCTION COMPANY, LP	TURNER B	035	EDDY	S:17, T:17S, R:31E	0	O	Pumping	Jan 1954	Dec 1983	28.71
30-015-32321	MARBOB ENERGY CORP	LEE FEDERAL	027	EDDY	S:17, T:17S, R:31E	5,230	O	Active	Nov 2002	Aug 2010	32.90
30-015-05182	MERIT ENERGY COMPANY, LLC	TURNER B	002	EDDY	S:17, T:17S, R:31E	3,407	G	Active	Jan 1967	Dec 1977	36.61
30-015-32580	MARBOB ENERGY CORP	FOSTER EDDY	17	EDDY	S:17, T:17S, R:31E	11,920	O	Active	Jun 2009	Aug 2010	49.06
30-015-37135	MARBOB ENERGY CORP	FOSTER EDDY	16	EDDY	S:17, T:17S, R:31E	6,374	O	Active Permit	Sep 2009	Aug 2010	61.00
30-015-37134	MARBOB ENERGY CORP	FOSTER EDDY	15	EDDY	S:17, T:17S, R:31E	7,200	O	Active Permit	Mar 2010	Aug 2010	70.00
30-015-37136	MARBOB ENERGY CORP	FOSTER EDDY	14	EDDY	S:17, T:17S, R:31E	6,350	O	Active Permit	Jan 2010	Aug 2010	109.13
30-015-05182	LINN OPERATING, INC.	TURNER B	002	EDDY	S:17, T:17S, R:31E	3,407	G	Active	Jan 1947	Dec 2009	
30-015-05183	LINN OPERATING, INC.	TURNER B	004	EDDY	S:17, T:17S, R:31E	0	G	Active	Jan 1947	Sep 2010	
					S:17,						

30-015-05185	LINN OPERATING, INC.	TURNER B	007	EDDY	T:17S, R:31E	0	I	Injection Well	Jan 1947	Sep 2010	
30-015-05186	LINN OPERATING, INC.	TURNER B	030	EDDY	S:17, T:17S, R:31E	0	I	Injection Well	Jan 1950	Sep 2010	

### Producing Wells in Sec 17, T17S, R31E



© 2010 Drilling Info, Inc. All rights reserved. All data and information is provided "As Is" and subject to the [DI subscription agreement](#).



**COG Operating LLC**  
**Operator**  
**Sec. 17, Unit H-SENE**  
**T-17S-R-31E, Eddy County, NM**  
**Well Name: Foster Eddy #33**  
**Lease #NMLC-0-049998A**

**Non Standard Location**  
**COG Operating LLC**  
**Operator**  
**Sec. 16, Unit E-SWNW, Unit L-NWSW**  
**T-17S-R-31E, Eddy County, NM**  
**Lease #B0-3014-0008**

