

3R – 445

2013 GEN COR

06 / 06 / 2013

RECEIVED OGD

2013 JUN 10 P 2:17

June 6, 2013

New Mexico Oil Conservation Division
1220 South St. Francis Drive
Santa Fe, New Mexico 87505
Attn: Glenn von Gonten

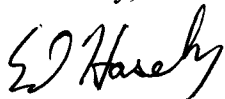
Re: **Julander Federal #1E**
Groundwater Investigation Update

Dear Mr. von Gonten:

Enclosed, for your review and approval, is updated information concerning the groundwater investigation work being conducted on the subject well location. The original Groundwater Investigation Work Plan, prepared by Animas Environmental Services, was submitted to you on April 19, 2013. We plan to proceed with the proposed monitoring well installations, unless we hear otherwise from you.

If there are any questions or concerns with this submittal, please contact me at 505-324-4131.

Sincerely,



Ed Hasely
Sr. Environmental Engineer
Energen Resources

Attachments: Figure 1 – Topographical Map
Figure 2 – Contaminant Concentrations and Proposed MW Map

Cc: Dillain Gage
HSE File
Facility File
Correspondence

HORN CANYON QUADRANGLE
NEW MEXICO - SAN JUAN COUNTY
1965 PHOTOREVISED 1979



2,000 1,000 0 2,000
SCALE
500
(1 INCH = 2,000 FEET)



Animas Environmental Services, LLC

DRAWN BY:

C. Lameman

DATE DRAWN:

June 4, 2013

REVISIONS BY:

C. Lameman

DATE REVISED:

June 4, 2013

CHECKED BY:

H. Woods

DATE CHECKED:

June 4, 2013

APPROVED BY:

E. McNally

DATE APPROVED:

June 4, 2013

FIGURE 1

TOPOGRAPHIC SITE LOCATION MAP

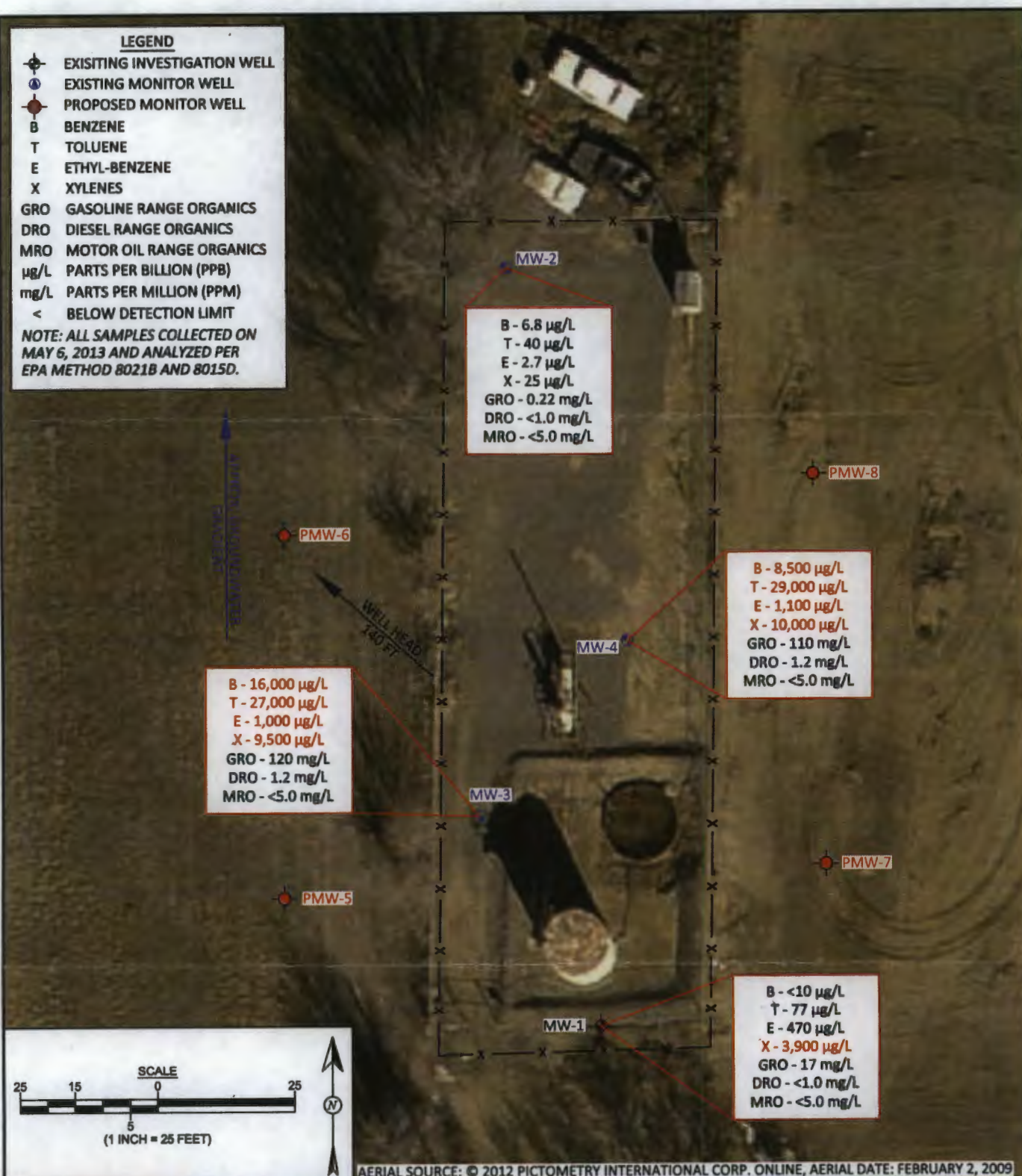
ENERGEN RESOURCES
JULANDER FEDERAL #1E

NE 1/4 SW 1/4, SECTION 31, T29N, R11W
SAN JUAN COUNTY, NEW MEXICO
N36.67936, W108.03514

LEGEND

- ⊕ EXISTING INVESTIGATION WELL
- ⊕ EXISTING MONITOR WELL
- ⊕ PROPOSED MONITOR WELL
- B BENZENE
- T TOLUENE
- E ETHYL-BENZENE
- X XYLENES
- GRO GASOLINE RANGE ORGANICS
- DRO DIESEL RANGE ORGANICS
- MRO MOTOR OIL RANGE ORGANICS
- μg/L PARTS PER BILLION (PPB)
- mg/L PARTS PER MILLION (PPM)
- < BELOW DETECTION LIMIT

NOTE: ALL SAMPLES COLLECTED ON MAY 6, 2013 AND ANALYZED PER EPA METHOD 8021B AND 8015D.



Animas Environmental Services, LLC

DRAWN BY:
C. Lameman

DATE DRAWN:
June 4, 2013

REVISIONS BY:
C. Lameman

DATE REVISED:
June 4, 2013

CHECKED BY:
H. Woods

DATE CHECKED:
June 4, 2013

APPROVED BY:
E. McNally

DATE APPROVED:
June 4, 2013

FIGURE 2

**GROUNDWATER CONTAMINANT
CONCENTRATIONS, MAY 2013
AND PROPOSED MONITOR WELLS**
 ENERGEN RESOURCES
 JULANDER FEDERAL #1E
 NE¼ SW¼, SECTION 31, T29N, R11W
 SAN JUAN COUNTY, NEW MEXICO
 N36.67936, W108.03514