

RECEIVED: <b>11/03/2017</b>	REVIEWER: <b>M/M</b>	TYPE: <b>CTB</b>	APP NO: <b>PMAM1731029704</b>
-----------------------------	----------------------	------------------	-------------------------------

ABOVE THIS TABLE FOR OCD DIVISION USE ONLY

**NEW MEXICO OIL CONSERVATION DIVISION**  
 - Geological & Engineering Bureau -  
 1220 South St. Francis Drive, Santa Fe, NM 87505

**ADMINISTRATIVE APPLICATION CHECKLIST**

THIS CHECKLIST IS MANDATORY FOR ALL ADMINISTRATIVE APPLICATIONS FOR EXCEPTIONS TO DIVISION RULES AND  
 REGULATIONS WHICH REQUIRE PROCESSING AT THE DIVISION LEVEL IN SANTA FE

**Applicant:** Matador Production Company**OGRID Number:** 228937**Well Name:** Michael Collins 11-23S-27E RB No. 206H Well & Miss Sue 12-23S-27E RB No. 202H Well**API:** 30-015-44433 & 30-015-44472**Pool:** Purple Sage; Wolfcamp (Gas) Pool**Pool Code:** 98220

**SUBMIT ACCURATE AND COMPLETE INFORMATION REQUIRED TO PROCESS THE TYPE OF APPLICATION  
 INDICATED BELOW**

**CTB - 834**
 RECEIVED OCD  
 11 NOV - 3 P 12:14
**1) TYPE OF APPLICATION:** Check those which apply for [A]

A. Location - Spacing Unit - Simultaneous Dedication

☐ NSL☐ NSP (PROJECT AREA)☐ NSP (PRORATION UNIT)☐ SD

B. Check one only for [I] or [II]

[I] Commingling - Storage - Measurement

☐ DHC☒ CTB☐ PLC☐ PC☒ OLS☒ OLM

[II] Injection - Disposal - Pressure Increase - Enhanced Oil Recovery

☐ WFX☐ PMX☐ SWD☐ IPI☐ EOR☐ PPR**2) NOTIFICATION REQUIRED TO:** Check those which apply.A. ☐ Offset operators or lease holdersB. ☐ Royalty, overriding royalty owners, revenue ownersC. ☐ Application requires published noticeD. ☐ Notification and/or concurrent approval by SLOE. ☐ Notification and/or concurrent approval by BLMF. ☐ Surface ownerG. ☐ For all of the above, proof of notification or publication is attached, and/or,H. ☐ No notice required**FOR OCD ONLY**☐ Notice Complete
☐ Application  
 Content  
 Complete

**3) CERTIFICATION:** I hereby certify that the information submitted with this application for  
 administrative approval is **accurate** and **complete** to the best of my knowledge. I also  
 understand that **no action** will be taken on this application until the required information and  
 notifications are submitted to the Division.

**Note: Statement must be completed by an individual with managerial and/or supervisory capacity.**

Jordan L. Kessler

Print or Type Name

Signature

November 3, 2017

Date

505-988-4421

Phone Number

jlkessler@hollandhart.com

e-mail Address



November 3, 2017

**VIA HAND DELIVERY**

David Catanach  
Oil Conservation Division  
New Mexico Department of Energy,  
Minerals and Natural Resources  
1220 South Saint Francis Drive  
Santa Fe, New Mexico 87505

RECEIVED OCD  
2017 NOV - 3 P 12:14

**Re: Application of Matador Production Company for administrative approval for off-lease storage and measurement and approval to surface commingle (lease commingle) production from the spacing units comprised of the N/2 of Section 11, and the N/2 of Section 12, Township 23 South, Range 27 East, NMPM, Eddy County, New Mexico.**

Dear Mr. Catanach:

Matador Production Company (OGRID No. 228937) seeks administrative approval for off-lease measurement and approval to surface lease commingle production from the Purple Sage; Wolfcamp (Gas) Pool (98220)) *from all existing and future wells and existing and future leases* drilled in the following areas of diverse ownership in Township 23 South, Range 27 East, NMPM, in Eddy County, New Mexico:

(a) The 320-acre standard spacing unit comprised of the N/2 of Section 11. The spacing unit is currently dedicated to the Michael Collins 11-23S-27E RB No. 206H Well (API No. pending). This well will produce from the Purple Sage; Wolfcamp (Gas) Pool (98220)). This spacing unit is subject to compulsory pooling Order No. R-14332.

(b) The 320-acre standard pooled spacing unit comprised of the N/2 of Section 12. The spacing unit is currently dedicated to the Miss Sue 12-23S-27E RB No. 202H Well (API No. 30-015-44433). This well will produce from the Purple Sage; Wolfcamp (Gas) Pool (98220)). This spacing unit is subject to compulsory pooling Order No. R-14482.

Pursuant to NMAC 19.15.12.7, approved spacing units with diverse ownership are considered separate leases for surface commingling purposes. Matador seeks authority to surface commingle production according to the provisions of NMAC 19.15.12.10.C *from all existing and future wells* in these separate areas of diverse ownership at a surface facility located in the SW/4 NE/4 (Unit H) of Section 11. Pursuant to 19.15.12.10(C)(4)(g), Matador also seeks



authority to commingle gas production into the Longwood Gathering Line from future leases with notice provided only to interest owners within future leases. Prior to commingling, gas production from each well will be separately metered using individual test separators with calibrated orifice meters that are manufactured to AGA specifications. Oil production from each well will also be separately metered using a turbine meter.

**Exhibit 1** is a land plat showing Matador's current development and gathering system in the subject area. The plat identifies the wellbores, the spacing units, and the common surface facility located in the SW/4 NE/4 (Unit H) of Section 114. All lands in the N/2 of Section 11 and the N/2 of Section 12 are fee lands.

**Exhibit 2** is a completed Application for Surface Commingling (Diverse Ownership) and Off-Lease Measurement Form C-107-B with attachments.

**Exhibit 3** is a C-102 for each of the wells currently permitted or drilled within the existing spacing units.

**Exhibit 4** is a diagram of the surface facilities.

**Exhibit 5** is an affidavit of publication directed to interest owners without known addresses.

**Exhibit 6** is a list of the interest owners affected by this request for approval to off-lease measure and surface commingle production. A copy of this application with all attachments has been sent by certified mail to all affected parties advising them that if they have an objection they must file it in writing with the division within 20 days from the date the Division receives Matador's application.

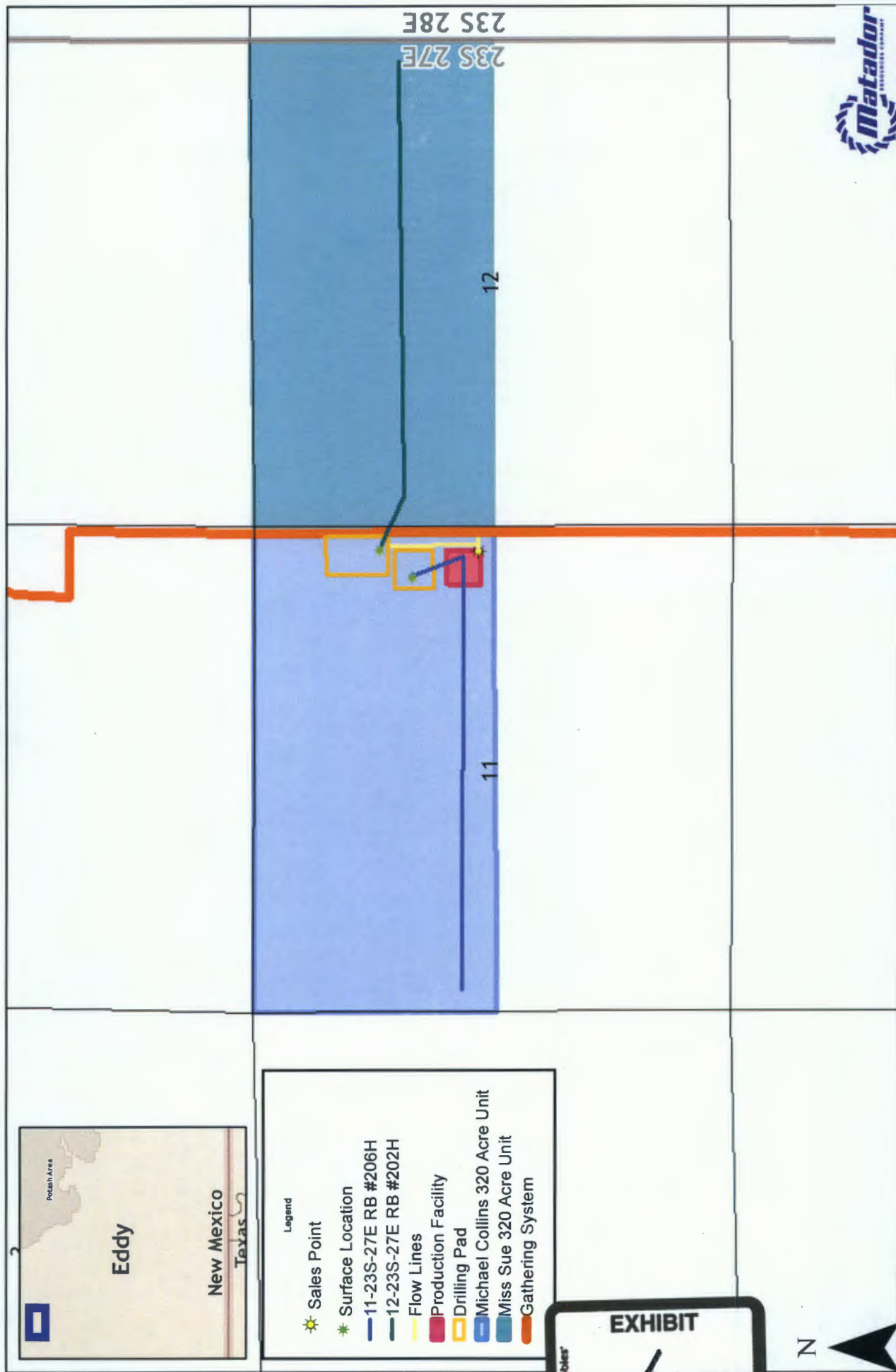
Your attention to this matter is appreciated.

Sincerely,

Jordan L. Kessler

**ATTORNEY FOR  
MATADOR PRODUCTION COMPANY**

# Michael Collins / Miss Sue Land Plat



District I  
1625 N. French Drive, Hobbs, NM 88240  
District II  
811 S. First St., Artesia, NM 88210  
District III  
1000 Rio Brazos Road, Aztec, NM 87410  
District IV  
1220 S. St Francis Dr, Santa Fe, NM  
87505

State of New Mexico  
Energy, Minerals and Natural Resources Department

Form C-107-B  
Revised August 1, 2011

**OIL CONSERVATION DIVISION**  
1220 S. St Francis Drive  
Santa Fe, New Mexico 87505

Submit the original  
application to the Santa Fe  
office with one copy to the  
appropriate District Office.

**APPLICATION FOR SURFACE COMMINGLING (DIVERSE OWNERSHIP)**

OPERATOR NAME: Matador Production Company  
OPERATOR ADDRESS: 5400 LBJ Freeway Tower 1 Suite 1500 Dallas, TX 75240  
APPLICATION TYPE:

☐ Pool Commingling ☒ Lease Commingling ☐ Pool and Lease Commingling ☐ Off-Lease Storage and Measurement (Only if not Surface Commingled)

LEASE TYPE: ☒ Fee ☐ State ☐ Federal

Is this an Amendment to existing Order? ☐ Yes ☒ No If "Yes", please include the appropriate Order No. \_\_\_\_\_  
Have the Bureau of Land Management (BLM) and State Land office (SLO) been notified in writing of the proposed commingling  
☐ Yes ☐ No

**(A) POOL COMMINGLING**  
Please attach sheets with the following information

(1) Pool Names and Codes	Gravities / BTU of Non-Commingled Production	Calculated Gravities / BTU of Commingled Production		Calculated Value of Commingled Production	Volumes

- (2) Are any wells producing at top allowables? ☐ Yes ☐ No  
(3) Has all interest owners been notified by certified mail of the proposed commingling? ☐ Yes ☐ No.  
(4) Measurement type: ☐ Metering ☐ Other (Specify)  
(5) Will commingling decrease the value of production? ☐ Yes ☐ No If "yes", describe why commingling should be approved

**(B) LEASE COMMINGLING**  
Please attach sheets with the following information

- (1) Pool Name and Code- Purple Sage-Wolfcamp Gas Pool (Gas) Code: 798220  
(2) Is all production from same source of supply? ☒ Yes ☐ No  
(3) Has all interest owners been notified by certified mail of the proposed commingling? ☒ Yes ☐ No  
(4) Measurement type: ☒ Metering ☐ Other (Specify)

**(C) POOL and LEASE COMMINGLING**  
Please attach sheets with the following information

- (1) Complete Sections A and E.

**(D) OFF-LEASE STORAGE and MEASUREMENT**  
Please attach sheets with the following information

- (1) Is all production from same source of supply? ☒ Yes ☐ No  
(2) Include proof of notice to all interest owners.

**(E) ADDITIONAL INFORMATION (for all application types)**  
Please attach sheets with the following information

- (1) A schematic diagram of facility, including legal location.  
(2) A plat with lease boundaries showing all well and facility locations. Include lease numbers if Federal or State lands are involved.  
(3) Lease Names, Lease and Well Numbers, and API Numbers.

I hereby certify that the information above is true and complete to the best of my knowledge and belief.

SIGNATURE: Ben Peterson TITLE: Senior Production Engineer DATE: 10/17/17

TYPE OR PRINT NAME Ben Peterson TELEPHONE NO.: (972) 371-5427

E-MAIL ADDRESS: bpeterson@matadorresources.com

**EXHIBIT**

tabbier

2

# Matador Production Company

One Lincoln Centre • 5400 LBJ Freeway • Suite 1500 • Dallas, Texas 75240

Voice 972.371.5427 • Fax 972.371.5201

[bpeterson@matadorresources.com](mailto:bpeterson@matadorresources.com)

---

**Benjamin D. Peterson, P.E.**  
Senior Production Engineer

October 19, 2017

New Mexico Oil Conservation Division  
1220 South St. Francis Drive  
Santa Fe, NM 87505

**Re: Application of Matador Production Company for administrative approval for off-lease measurement and approval to surface commingle (lease commingle) oil and gas production from the spacing units comprised of the N/2 of Section 11, the N/2 of Section 12, Township 23 South, Range 27 East, NMPM, Eddy County, New Mexico (the "Lands")**

To Whom This May Concern,

Matador Production Company ("Matador"), OGRID: 228937, requests to commingle current oil and gas production from two (2) distinct wells located on the Lands and future production from the Lands as described herein. Both wells will be metered through a test separator with an oil turbine meter and gas orifice meter. The gas commingling will occur after individual measurement at each well. Gas exiting each well test flows into one gathering line, as depicted on **Exhibit A**, the Longwood Gathering. Each well on the Lands will have its own test separator with an orifice meter manufactured and assembled in accordance with American Gas Association (AGA) specifications. All primary and secondary Electronic Flow Measurement (EFM) equipment is tested and calibrated by a reputable third party measurement company in accordance with industry specifications.

The orifice meter is the preferred measurement device utilized by midstream and E&P companies in natural gas measurement. The gas samples are obtained at the time of the meter testing/calibration and the composition and heating value are determined by a laboratory in accordance with American Petroleum Institute (API) specifications to ensure accurate volume and Energy (MMBTU) determinations. See example from Fesco Laboratory attached as **Exhibit B** hereto.

The flow stream from each wellhead is demonstrated in the Process Flow Diagram (PFD) attached as **Exhibit A** hereto. The PFD shows that the water, oil, and gas leave the wellbore and flow into a wellhead test separator which separates the oil, gas, and water. The oil is measured via turbine meter which is calibrated periodically by a third party measurement company for accuracy. The gas is measured on a volume and MMBTU basis by an orifice meter and supporting EFM equipment in accordance with American Petroleum Institute (API) Chapter 21.1. The gas is then

sent into a gathering line where it is commingled with each of the other wells' metered gas. The gathering line gas is then metered by another orifice meter at the tank battery check to show the total volume of gas leaving the Tank Battery. This meter is tested and calibrated in accordance with industry specifications and volume and energy are determined on an hourly, daily, and monthly basis. Once the gas exits this final tank battery sales check it travels directly into a third party sales connect meter. Longwood has its own orifice meter that measures the gas for custody transfer. These meters are also calibrated periodically to ensure the measurement accuracy.

In conclusion, all the oil and gas produced on the Lands is and will be metered at each wellhead and allocated correctly using the same measurement equipment as the pipeline sales measurement specifications accepted by API as industry standard.

Very truly yours,

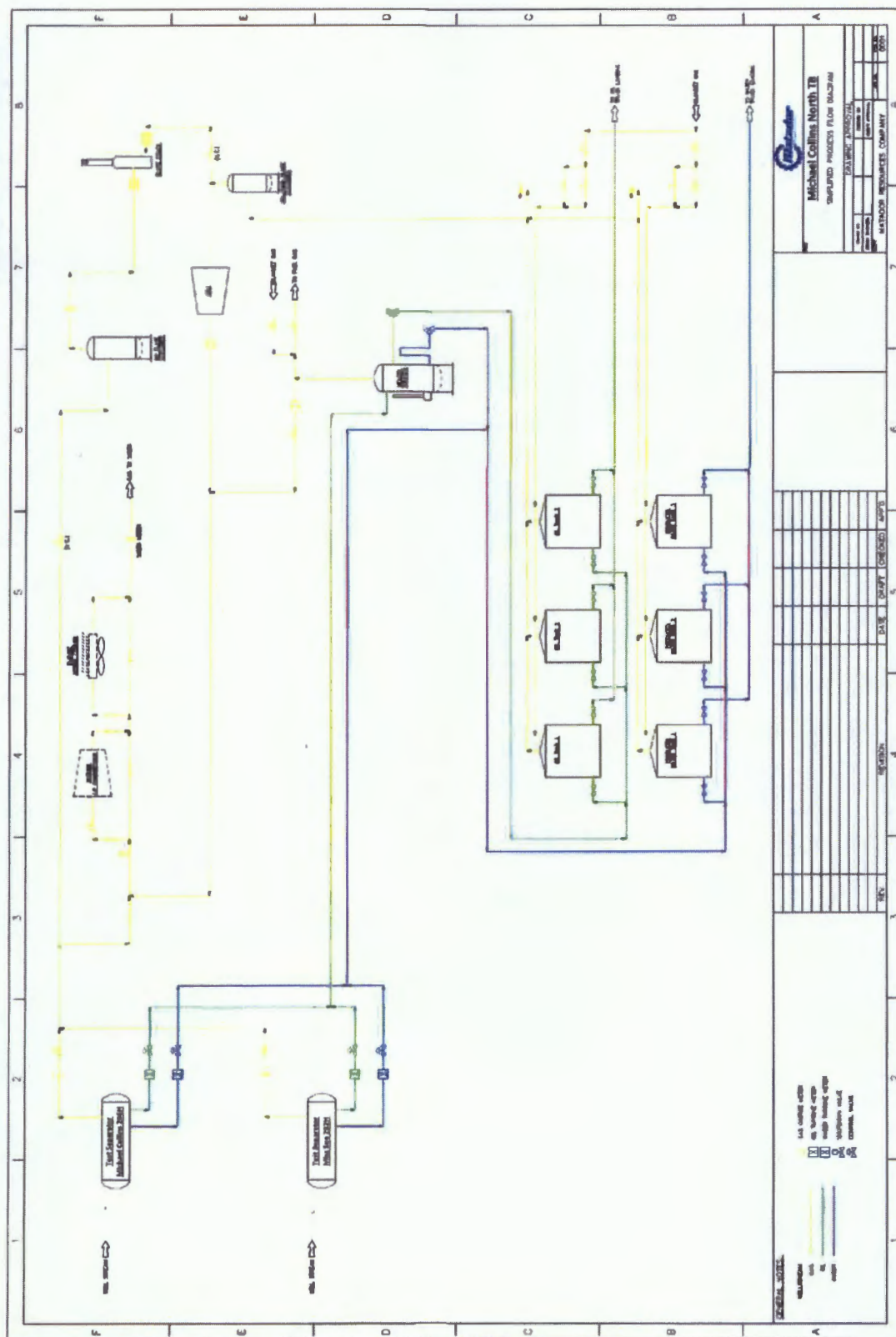
MATADOR PRODUCTION COMPANY

A handwritten signature in dark ink, appearing to read 'B. Peterson', with a long horizontal flourish extending to the right.

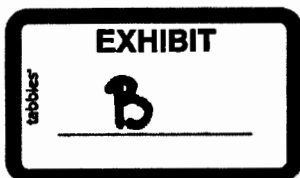
Benjamin D. Peterson, P.E.  
Sr. Production Engineer



50/99W







January 30, 2017

FESCO, Ltd.  
1100 Fesco Ave. - Alice, Texas 78332

For: Matador Production Company  
One Lincoln Centre  
5400 LBJ Freeway, Suite 1500  
Dallas, Texas 75240

Sample: Tom Walters 12 235 27E RB No.203H  
First Stage Separator  
Spot Gas Sample@ 357 psig & 106 °F

Date Sampled: 01/19/2017

Job Number: 71220.001

**CHROMATOGRAPH EXTENDED ANALYSIS - GPA 2286**

COMPONENT	MOL%	GPM
Hydrogen Sulfide*	< 0.001	
Nitrogen	0.977	
Carbon Dioxide	0.071	
Methane	76.257	
Ethane	12.928	3.451
Propane	5.916	1.627
Isobutane	0.698	0.228
n-Butane	1.617	0.509
2-2 Dimethylpropane	0.021	0.008
Isopentane	0.334	0.122
n-Pentane	0.388	0.140
Hexanes	0.296	0.122
Heptanes Plus	<u>0.497</u>	<u>0.209</u>
Totals	100.000	6.416

**Computed Real Characteristics Of Heptanes Plus:**

Specific Gravity ----- 3.457 (Air=1)  
Molecular Weight ----- 99.74  
Gross Heating Value ----- 5172 BTU/CF

**Computed Real Characteristics Of Total Sample:**

Specific Gravity ----- 0.751 (Air=1)  
Compressibility (Z) ----- 0.9961  
Molecular Weight ----- 21.67  
Gross Heating Value  
Dry Basis ----- 1294 BTU/CF  
Saturated Basis ----- 1272 BTU/CF

\*Hydrogen Sulfide tested on location b Stain Tube Method (GPA 2377)  
<0.013 Gr/100 CF, <0.2 PPMV or <0.001 Mol %

Base Conditions: 14.650 PSI & 60 Deg F

Sampled By: (14) R.Perez  
Analyst: HB  
Processor: NG  
Cylinder ID: T-4351

Certified: FESCO, Ltd. - Alice, Texas

David Dannhaus 361-661-7015

**CHROMATOGRAPH EXTENDED ANALYSIS - GPA 2286**  
**TOTAL REPORT**

COMPONENT	MOL %	GPM	WT %
Hydrogen Sulfide*	< 0.001		< 0.001
Nitrogen	0.977		1.263
Carbon Dioxide	0.071		0.144
Methane	76.257		56.464
Ethane	12.928	3.451	17.941
Propane	5.916	1.627	12.040
Isobutane	0.698	0.228	1.872
n-Butane	1.617	0.509	4.338
2,2 Dimethylpropane	0.021	0.008	0.070
Isopentane	0.334	0.122	1.112
n-Pentane	0.388	0.140	1.292
2,2 Dimethylbutane	0.004	0.002	0.016
Cyclopentane	0.000	0.000	0.000
2,3 Dimethylbutane	0.028	0.011	0.111
2 Methylpentane	0.089	0.037	0.354
3 Methylpentane	0.048	0.020	0.191
n-Hexane	0.127	0.052	0.505
Methylcyclopentane	0.057	0.020	0.221
Benzene	0.009	0.003	0.032
Cyclohexane	0.067	0.023	0.260
2-Methylhexane	0.019	0.009	0.088
3-Methylhexane	0.021	0.010	0.097
2,2,4 Trimethylpentane	0.000	0.000	0.000
Other C7's	0.056	0.024	0.256
n-Heptane	0.049	0.023	0.227
Methylcyclohexane	0.068	0.027	0.308
Toluene	0.014	0.005	0.060
Other C8's	0.065	0.030	0.331
n-Octane	0.020	0.010	0.105
Ethylbenzene	0.001	0.000	0.005
M & P Xylenes	0.007	0.003	0.034
O-Xylene	0.002	0.001	0.010
Other C9's	0.026	0.013	0.151
n-Nonane	0.005	0.003	0.030
Other C10's	0.008	0.005	0.052
n-Decane	0.002	0.001	0.013
Undecanes (11)	<u>0.001</u>	<u>0.001</u>	<u>0.007</u>
Totals	100.000	6.416	100.000

**Computed Real Characteristics Of Total Sample:**

Specific Gravity -----	0.751	(Air=1)
Compressibility (Z) -----	0.9961	
Molecular Weight -----	21.67	
Gross Heating Value		
Dry Basis -----	1294	BTU/CF
Saturated Basis -----	1272	BTU/CF

District I  
1625 N. French Dr., Hobbs, NM 88240  
Phone: (575) 393-6161 Fax: (575) 393-0720  
District II  
811 S. First St., Artesia, NM 88210  
Phone: (575) 748-1283 Fax: (575) 748-9720  
District III  
1000 Rio Brazos Road, Aztec, NM 87410  
Phone: (505) 334-6178 Fax: (505) 334-6170  
District IV  
1220 S. St. Francis Dr., Santa Fe, NM 87505  
Phone: (505) 476-3460 Fax: (505) 476-3462

State of New Mexico  
Energy, Minerals & Natural Resources  
Department  
OIL CONSERVATION DIVISION  
1220 South St. Francis Dr.  
Sante Fe, NM 87505

FORM C-102  
Revised August 1, 2011  
Submit one copy to appropriate  
District Office

☐ AMENDED REPORT

WELL LOCATION AND ACREAGE DEDICATION PLAT

<sup>1</sup> API Number <b>30-015-44472</b>		<sup>2</sup> Pool Code	<sup>3</sup> Pool Name <b>PURPLE SAGE - WOLFCAMP GAS POOL (POOL CODE 98220)</b>
<sup>4</sup> Property Code	<sup>5</sup> Property Name <b>MICHAEL COLLINS 11-23S-27E RB</b>		<sup>6</sup> Well Number <b>206H</b>
<sup>7</sup> OGRID No.	<sup>8</sup> Operator Name <b>MATADOR PRODUCTION COMPANY</b>		<sup>9</sup> Elevation <b>3091'</b>

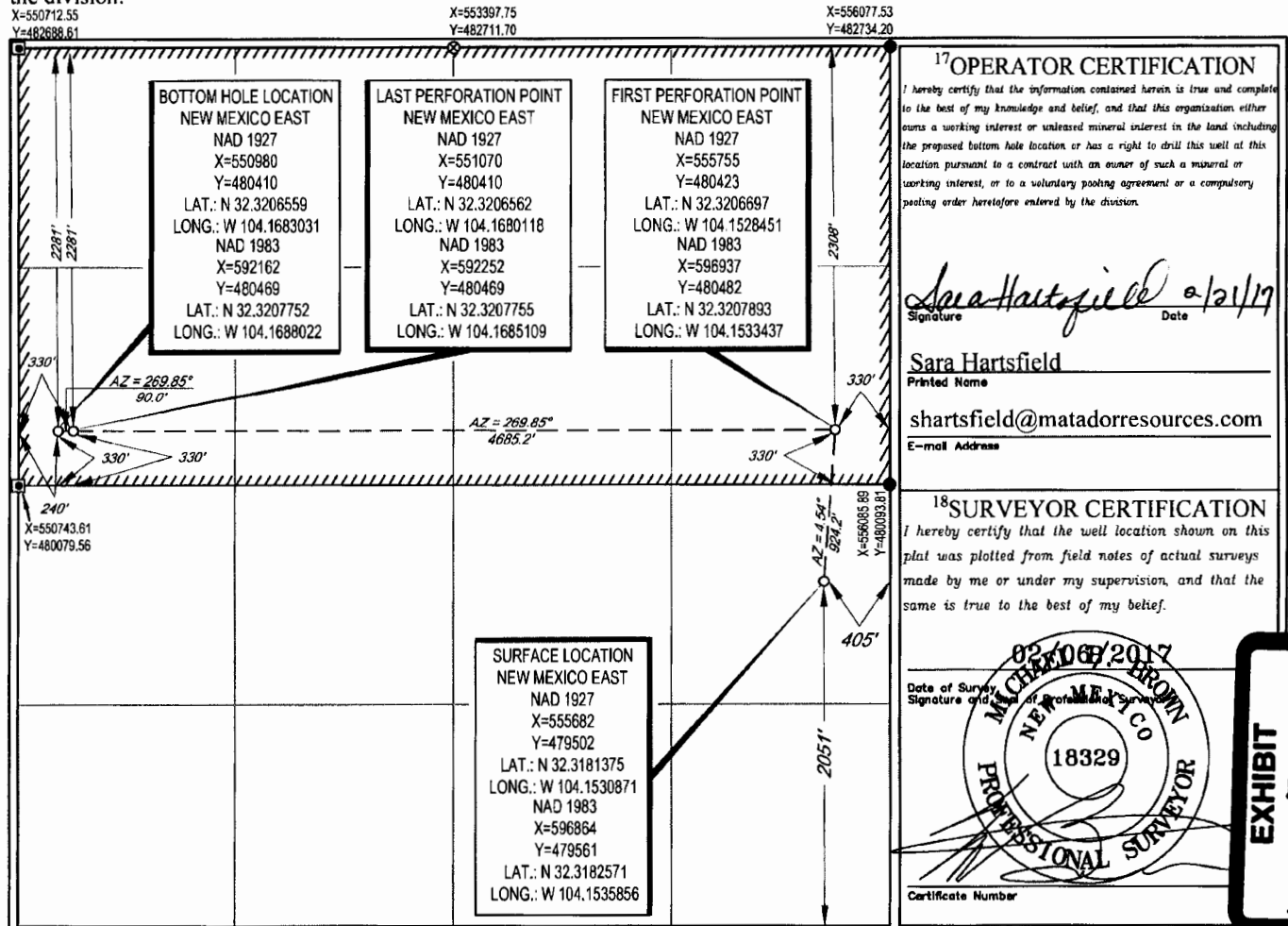
<sup>10</sup>Surface Location

UL or lot no.	Section	Township	Range	Lot Idn	Feet from the	North/South line	Feet from the	East/West line	County
<b>I</b>	<b>11</b>	<b>23-S</b>	<b>27-E</b>	<b>-</b>	<b>2051'</b>	<b>SOUTH</b>	<b>405'</b>	<b>EAST</b>	<b>EDDY</b>

UL or lot no.	Section	Township	Range	Lot Idn	Feet from the	North/South line	Feet from the	East/West line	County
<b>E</b>	<b>11</b>	<b>23-S</b>	<b>27-E</b>	<b>-</b>	<b>2281'</b>	<b>NORTH</b>	<b>240'</b>	<b>WEST</b>	<b>EDDY</b>

<sup>12</sup> Dedicated Acres <b>320</b>	<sup>13</sup> Joint or Infill	<sup>14</sup> Consolidation Code	<sup>15</sup> Order No. <b>2-148332</b>
---	-------------------------------	----------------------------------	--

No allowable will be assigned to this completion until all interests have been consolidated or a non-standard unit has been approved by the division.



District I  
1625 N. French Dr., Hobbs, NM 88240  
Phone: (575) 393-6161 Fax: (575) 393-0720  
District II  
811 S. First St., Artesia, NM 88210  
Phone: (575) 748-1283 Fax: (575) 748-9720  
District III  
1000 Rio Brazos Road, Aztec, NM 87410  
Phone: (505) 334-6178 Fax: (505) 334-6170  
District IV  
1220 S. St. Francis Dr., Santa Fe, NM 87505  
Phone: (505) 476-3460 Fax: (505) 476-3462

State of New Mexico  
Energy, Minerals & Natural Resources  
Department  
OIL CONSERVATION DIVISION  
1220 South St. Francis Dr.  
Santa Fe, NM 87505

NM OIL CONSERVATION  
ARTESTA DISTRICT

SEP 06 2017

FORM C-102  
Revised August 1, 2011

Submit one copy to appropriate

RECEIVED

District Office

☐ AMENDED REPORT

WELL LOCATION AND ACREAGE DEDICATION PLAT

<sup>1</sup> API Number <b>30-015-44433</b>	<sup>2</sup> Pool Code 98220	<sup>3</sup> Pool Name PURPLE SAGE;WOLFCAMP (GAS)
<sup>4</sup> Property Code <b>319567</b>	<sup>5</sup> Property Name MISS SUE 12-23S-27E RB	
<sup>6</sup> GRID No. 228937	<sup>7</sup> Operator Name MATADOR PRODUCTION COMPANY	<sup>8</sup> Well Number #202H  <sup>9</sup> Elevation 3076'

<sup>10</sup>Surface Location

UL or lot no.	Section	Township	Range	Lot Idn	Feet from the	North/South line	Feet from the	East/West line	County
H	11	23-S	27-E	-	1478'	NORTH	245'	EAST	EDDY

UL or lot no.	Section	Township	Range	Lot Idn	Feet from the	North/South line	Feet from the	East/West line	County
H	12	23-S	27-E	-	1650'	NORTH	240'	EAST	EDDY

<sup>11</sup> Dedicated Acres 320	<sup>12</sup> Joint or In/Full	<sup>13</sup> Consolidation Code	<sup>14</sup> Order No. <b>2-14482</b>
--------------------------------------	--------------------------------	----------------------------------	---

No allowable will be assigned to this completion until all interests have been consolidated or a non-standard unit has been approved by the division.

				<p><sup>17</sup>OPERATOR CERTIFICATION</p> <p>I hereby certify that the information contained herein is true and complete to the best of my knowledge and belief, and that this organization either owns a working interest or unleased mineral interest in the land including the proposed bottom hole location or has a right to drill this well at this location pursuant to a contract with an owner of such a mineral or working interest, or to a voluntary pooling agreement or a compulsory pooling order heretofore entered by the division.</p> <p><i>Sara Hartsfield</i> 5/11/17 Signature Date</p> <p>Sara Hartsfield Printed Name</p> <p>shartsfield@matadorresources.com E-mail Address</p>
<p><sup>18</sup>SURVEYOR CERTIFICATION</p> <p>I hereby certify that the well location shown on this plat was plotted from field notes of actual surveys made by me or under my supervision, and that the same is true to the best of my belief.</p>				
<p><b>SURFACE LOCATION</b> NEW MEXICO EAST NAD 1983 X=597019 Y=481313 LAT.: N 32.3230727 LONG.: W 104.1530724 ELEV = 3076'</p>	<p><b>FIRST PERFORATION POINT</b> NEW MEXICO EAST NAD 1983 X=597595 Y=481145 LAT.: N 32.3226076 LONG.: W 104.1512102</p>	<p><b>LAST PERFORATION POINT</b> NEW MEXICO EAST NAD 1983 X=602272 Y=481163 LAT.: N 32.3226339 LONG.: W 104.1360700</p>	<p><b>BOTTOM HOLE LOCATION</b> NEW MEXICO EAST NAD 1983 X=602362 Y=481163 LAT.: N 32.3226343 LONG.: W 104.1357787</p>	
<p>Date of Survey: 05/10/2017 Signature: [Signature] Professional Surveyor Certificate Number: 18329</p>				



## Legal Notice

To: B&G Royalties; Barbara Rennie, her heirs and devisees; Billy Bingman, his heirs and devisees; Black Mountain Operating, LLC; Bobby Gene Kilcrease, his heirs and devisees; Brandon Munoz, his heirs and devisees; Brian C. Reid et ux, their heirs and devisees; Carlton M. Green, Trustee of the Trust under the Last Will and Testament of Juanita K. Corr, formerly Juanita K. Green; Catherine Shoemaker, her heirs and devisees; CEP Minerals, LLC; Charles A. Skeen, his heirs and devisees; Charles Bingman, his heirs and devisees; Charlotte Louise Bingman, her heirs and devisees; COG Operating LLC; Collins & Jones Investments, LLC; Compound Properties LLC; Crown Oil Partners IV Management, LP; Crown Oil Partners, LP; Crown Ventures III, LLC; Curtis K. Skeen, his heirs and devisees; Cynthia Short, her heirs and devisees; Daniel Bryce Munoz, his heirs and devisees; Darla Ramsey Wallace, her heirs and devisees; David W. Cromwell, his heirs and devisees; Donald Finley, his heirs and devisees; Dorothy Driscoll, her heirs and devisees; Dwayne Bingman, , his heirs and devisees; Elaine Myers, her heirs and devisees; Estate of Harold Joseph Grandi, his heirs and devisees; Featherstone Development Corporation; Foundation Minerals, LLC; Free Ride, LLC; Gabler Energy Investments, LLC; Gerard G. Vavrek, his heirs and devisees; Gytha P. Bindel, her heirs and devisees; H. Jason Wacker, his heirs and devisees; Harold J. Grandi and Elizabeth "Betty" Ann Grandi, Revocable Trust Agreement, their heirs and devisees; James G. Kilcrease, his heirs and devisees; James Kirby Read, Jr., Individually and as Foreign Personal Representative of the Estate of Agnes Lovella Read, their heirs and devisees; Jesse A. Faught, Jr., his heirs and devisees; Jesus N. Carrasco, his heirs and devisees; Kathleen A. Phillips, her heirs and devisees; Lee B. Voigt and Wilma E. Voigt Revocable Trust; Linda Ann Jurva and Curtis Kelly Skeen, Trustees of the Kelly Skeen Testamentary Trust; Linda Skeen Jurva, her heirs and devisees; Llano Natural Resources, LLC; LMC Energy; Marathon Oil Permian, LLC; Margaret McClure, for life, remainder to Timothy Dirk Roberson, Cynthia Lou Roberson, Michael Lee Roberson, Jeffery Earl Roberson, and Samuel L Roberson, their heirs and devisees; Marian Crow, her heirs and devisees; Mario Munoz, her heirs and devisees; Mario Munoz, Jr., his heirs and devisees; Mark Munoz, his heirs and devisees; Martha W. Skeen, her heirs and devisees; Martha Woolley Skeen, her heirs and devisees; Mary Munoz, her heirs and devisees; Matthew Munoz, his heirs and devisees; Maven Royalty Partners; Mavros Minerals, LLC; Maximiano M. Vasquez et ux, their heirs and devisees; Mo Oil, LLC; MRC Permian Company; New Mexico Boys Ranch; New River Mineral Holdings, LLC; Norma Jean Kelley, her heirs and devisees; Oak Valley Mineral and Land, LP; Panhandle Properties LLC; Post Oak Crown IV, LLC; Post Oak Crown IV-B, LLC; Prospector LLC; RKI Exploration & Production, LLC; Roberson Minerals LLC; Ronald M. Grandi a/k/a Donald Maurice Grandi, his heirs and devisees; Ross Duncan Properties, LLC; Sandra Gail Lemon, her heirs and devisees; Sharon E. Skeen, her heirs and devisees; Shelbie D. Munoz, her heirs and devisees; Sherry Guillaume, her heirs and devisees; Southwest Petroleum Land Services, LLC; Steven Bingman, his heirs and devisees; Tower Rock Royalties LP; TROG Fund I LP; Wells Fargo Central Pacific Holdings, Inc.; XPLOR Resources LLC.



Application of Matador Production Company for administrative approval for off-lease storage and measurement and approval to surface commingle (lease commingle) production from the spacing units comprised of the N/2 of Section 11, and the N/2 of Section 12, Township 23 South, Range 27 East, NMPM, Eddy County, New Mexico pursuant to 19.15.23.9(A). Both leases will produce from the Purple Sage; Wolfcamp (Gas) Pool (98220). Any objection to this application must be filed in writing within twenty days from date of publication with the applicant and the New Mexico Oil Conservation Division, 1220 South St. Francis Drive, Santa Fe, New Mexico, 87505. If no objection is received within this twenty-day period, this application may be approved administratively by the Division. If you have any questions about this application, please contact Dana R. Arnold, 5400 LBJ Freeway, Suite 1500, Dallas, TX 75240, (972) 371-5284, [darnold@matadorresources.com](mailto:darnold@matadorresources.com).



**INTEREST OWNERS:**

Michael Collins NSL (86)  
B&G Royalties  
P.O. Box 376  
Artesia, NM 88211-0376  
70160750000035690410

Barbara Rennie  
1501 Verdel Ave.  
Carlsbad, NM 88220  
70161750000035690403

Billy Bingman  
2756 Tuttle Rd.  
Walnut Cove, NC 27052  
70160750000035690397

Black Mountain Operating, LLC  
500 Main St. Suite #1200  
Fort Worth, TX 76102  
70160750000035690380

Bobby Gene Kilcrease  
P.O. Box 841  
Gainesville, TX 76241-0841  
70160750000035690373

Bobby Gene Kilcrease  
2310 E. Broadway St. Apt. 201  
Gainesville, TX 76240-4532  
07160750000035690366

Brandon Munoz  
TDJC#2031556  
Price Daniel Unit  
938 FM RD. 1673  
Snyder, TX 79549  
70160750000035690359

Brian C. Reid et ux  
2502 Camarie  
Midland, TX 79705  
70160750000035690342



Carlton M. Green, Trustee of the Trust under the Last  
Will and Testament of Juanita K. Corr, formerly Juanita K. Green  
7309 Baltimore Ave. Suite 115  
College Park, MD 20740-3200  
70160750000035690335

Catherine Shoemaker  
3712 Naples St. Northeast  
Albuquerque, NM 87111  
70160750000035690328

CEP Minerals, LLC  
P.O. Box 50820  
Midland, TX 79710  
70160750000035690311

Charles A. Skeen  
P.O. Box 8111  
Roswell, NM 88202-8111  
70160750000035690304

Charles Bingman  
1213 Sam Corn Rd.  
Lawsonville, NC 27022  
70160750000035690298

Charlotte Louise Bingman  
2708 Tuttle Rd.  
Walnut Cove, NC 27052  
70160750000035690281

COG Operating LLC  
600 West Illinois Ave.  
Midland, TX 79701  
70160750000035690274

Collins & Jones Investments, LLC  
508 W. Wall Street Suite #1200  
Midland, TX 79701  
70160750000035690267

Compound Properties LLC  
PO Box 2990  
Ruidoso, NM 88355  
70160750000035690250

Crown Oil Partners IV Management, LP  
P.O. Box 50820  
Midland, TX 79710  
70160750000035690243

Crown Oil Partners, LP  
P.O. Box 50820  
Midland, TX 79710  
70160750000035690236

Crown Ventures III, LLC  
P.O. Box 50820  
Midland, TX 79710  
70160750000035690229

Curtis K. Skeen  
1508 W. Riverside Dr.  
Carlsbad, NM 88220  
70160750000035690212

Cynthia Short  
1626 N. Guadalupe St.  
Carlsbad, NM 88220  
70160750000035690205

Daniel Bryce Munoz  
6613 Village Springs Dr.  
Plano, TX 75024  
70160750000035690199

Darla Ramsey Wallace  
255 Ivory Rd. Southeast  
Rio Rancho, NM 87124-4328  
70160750000035690182

David W. Cromwell  
P.O. Box 50820  
Midland, TX 79710  
70160750000035690175

Donald Finley  
525 Castlerock Lane  
El Paso, TX 79912  
70160750000035690168

Dorothy Driscoll

P.O. Box 622  
Carlsbad, NM 88221-0622  
70160750000035690151

Dwayne Bingman  
6222 Nat Rd.  
Julian, NC 27283  
70160750000035690144

Elaine Myers  
216 Northwind Dr.  
El Paso, TX 79912  
70160750000035690137

Estate of Harold Joseph Grandi  
1309 W. Thomas St.  
Carlsbad, NM 88220  
70160750000035690120

Featherstone Development Corporation  
P.O. Box 429  
Roswell, NM 88202-0429  
70160750000035690113

Foundation Minerals, LLC  
4000 N. Big Spring St. Suite #300  
Midland, TX 79705  
70160750000035690106

Free Ride, LLC  
PO Box 429  
Roswell, NM 88202-0429  
70160750000035690090

Gabler Energy Investments, LLC  
1021 Main St.  
Houston, TX 77002  
70160750000035690083

Gerard G. Vavrek  
P.O. Box 50820  
Midland, TX 79710  
70160750000035690076

Gytha P. Bindel  
2103 E. Wood Ave  
Carlsbad, NM 88220-9775  
70160750000035690069

H. Jason Wacker  
5601 Hillcrest  
Midland, TX 79707-9113  
70160750000035690052

Harold J. Grandi and Elizabeth "Betty" Ann  
Grandi Revocable Trust Agreement  
1309 W. Thomas St.  
Carlsbad, NM 88220  
70171450000216967583

James G. Kilcrease  
1805 San Acacio St  
Las Cruces, NM 88001  
70160750000035690045

James Kirby Read, Jr., Individually and as  
Foreign Personal Representative of the Estate  
of Agnes Lovella Read  
6569 Puupilo Rd. Unit A  
Kapaa, HI 96746-9466  
70160750000035690038

Jesse A. Faught, Jr.  
P.O. Box 52603  
Midland, TX 79710  
70160750000035690021

Jesus N. Carrasco  
310 Brantley Rd.  
Carlsbad, NM 88221  
70160750000035690014

Kathleen A. Phillips  
Unknown

Lee B. Voigt and Wilma E. Voigt Revocable Trust  
1103 North Shore Dr.  
Carlsbad, NM 88220-4637  
70171450000216971351

Linda Ann Jurva and Curtis Kelly Skeen, Trustees of the Kelly Skeen Testamentary Trust  
301 S. Canyon St.  
Carlsbad, NM 88220  
70171450000216971344

Linda Skeen Jurva  
1134 Tracy Place  
Carlsbad, NM 88220  
70171450000216971337

Llano Natural Resources, LLC  
4920 S. Loop 289, Suite #206  
Lubbock, TX 79414  
70171450000216971313

LMC Energy  
550 W. Texas Ave. Suite #945  
Midland, TX 79701  
70171450000216971306

Marathon Oil Permian, LLC  
5555 San Felipe Street  
Houston, TX 77056  
70171450000216971290

Margaret McClure, for life, remainder to Timothy Dirk Roberson, Cynthia Lou Roberson,  
Michael Lee Roberson, Jeffery Earl Roberson, and Samuel L Roberson  
3305 North Grimes  
Hobbs, NM 88240  
70171450000216971283

Marian Crow  
6941 E. Nightglow Circle  
Scottsdale, AZ 85266  
70171450000216971276

Mario Munoz  
5421 Porter Rd  
Carlsbad, NM 88220-8929  
70171450000216971269

Mario Munoz Jr  
PO Box 274  
Carlsbad, NM 88221  
70171450000216971252

Mark Munoz  
PO Box 274  
Carlsbad, NM 88221  
70171450000216971245

Martha W. Skeen  
301 S. Canyon St.  
Carlsbad, NM 88220  
70171450000216971238

Martha Woolley Skeen  
301 S. Canyon St.  
Carlsbad, NM 88220  
70171450000216977910

Mary Munoz  
PO Box 274  
Carlsbad, NM 88221  
70171450000216967903

Matthew Munoz  
PO Box 274  
Carlsbad, NM 88221  
70171450000216977897

Maven Royalty Partners  
620 Texas St.  
Shreveport, LA 71101  
70171450000216977880

Mavros Minerals, LLC  
P.O. Box 50820  
Midland, TX 79710  
70171450000216977873

Maximiano M. Vasquez et ux  
7531 Grandi RD  
Carlsbad, NM 88220-9575  
70171450000216967866

Mo Oil, LLC  
P.O. Box 429  
Roswell, NM 88202-0429  
70171450000216967859



MRC Permian Company  
5400 LBJ Feeway, Suite 1500  
Dallas, TX 75240  
70171450000216977842

New Mexico Boys Ranch  
6209 Hendrix Rd. Northeast  
Albuquerque, NM 87110  
70171450000216977835

New River Mineral Holdings, LLC  
P O Box 899  
Carlsbad, NM 88221  
70171450000216967828

Norma Jean Kelley  
1701 Mountain Shadow  
Carlsbad, NM 88220  
70171450000216977811

Oak Valley Mineral and Land, LP  
P. O. Box 50820  
Midland, TX 79710  
70171450000216977804

Oak Valley Mineral and Land, LP  
303 Veterans Airpark Lane  
Midland, TX 79705  
70171450000216977798

Panhandle Properties LLC  
P. O. Box 647  
Artesia, NM 88211-0647  
70171450000216977781

Post Oak Crown IV, LLC  
5200 San Felipe  
Houston, TX 77056  
70171450000216977774

Post Oak Crown IV-B, LLC  
5200 San Felipe  
Houston, TX 77056  
70171450000216977743

Prospector LLC  
P. O. Box 429  
Roswell, NM 88202-0429  
7017145000021698

RKI Exploration & Production, LLC  
3500 One Williams Center, MD : 35,  
Tulsa, OK 74172  
70171450000216977729

Roberson Minerals LLC  
6016 n. Fowler St.  
Hobbs, NM 88240  
70171450000216977712

Ronald M. Grandi a/k/a Donald Maurice Grandi  
4111 Grandi Rd.  
Carlsbad, NM 88220  
70171450000216977705

Ross Duncan Properties, LLC  
P.O. Box 647  
Artesia, NM 88211-0647  
70171450000216977699

Sandra Gail Lemon  
1907 Blue Quail CT,  
Carlsbad, NM 88220-4184  
70171450000216977682

Sharon E. Skeen  
603 W. Fox St.  
Carlsbad, NM 88220  
70171450000216977675

Shelbie D. Munoz  
401 Elm  
Loving, NM 88256  
70171450000216977668

Sherry Guillaume  
1410 W. Sage St.  
Tucson, AZ 85704  
70171450000216977651

Southwest Petroleum Land Servies, LLC  
1901 W 4th Street  
Roswell, NM 88201-1745  
70171450000216977644

Steven Bingman  
1143 Jewel Rd.  
Danbury, NC 27016  
70171450000216977637

Tower Rock Royalties LP  
PO Box 5746  
Austin, Texas 78763  
70171450000216977620

TROG Fund I LP  
PO Box 5746  
Austin, Texas 78763  
70171450000216977613

Wells Fargo Central Pacific Holdings, Inc.  
2710 Gateway Oaks Dr.  
Suite #150 North  
Sacramento, CA 95833  
70171450000216977606

XPLOR Resources LLC  
1104 North Shore Drive  
Carlsbad NM 88220-4638  
70171450000216977590

HOLLAND & HART<sup>LLP</sup>



**Jordan L. Kessler**  
**Associate**  
**Phone** (505) 988-4421  
**Fax** (505) 983-6043  
jlkessler@hollandhart.com

November 3, 2017

**CERTIFIED MAIL**  
**RETURN RECEIPT REQUESTED**

**TO: ALL AFFECTED PARTIES**

**Re: Application of Matador Production Company for administrative approval for off-lease storage and measurement and approval to surface commingle (lease commingle) production from the spacing units comprised of the N/2 of Section 11, and the N/2 of Section 12, Township 23 South, Range 27 East, NMPM, Eddy County, New Mexico.**

Ladies and Gentlemen:

Enclosed is a copy of the above-referenced application which was filed with the New Mexico Oil Conservation Division on this date. Any objection to this application must be filed in writing within twenty days from this date at the Division's Santa Fe office located at 1220 South St. Francis Drive, Santa Fe, New Mexico, 87505. If no objection is received within this twenty-day period, this application may be approved administratively by the Division.

If you have any questions about this application, please contact the following:

Sherri Gore  
Matador Production Company  
972-371-5467  
SGore@matadorresources.com

Sincerely,

Jordan L. Kessler  
**ATTORNEY FOR**  
**MATADOR PRODUCTION COMPANY**

**Holland & Hart<sup>LLP</sup>**

**Phone** [505] 988-4421 **Fax** [505] 983-6043 **www.hollandhart.com**

110 North Guadalupe Suite 1 Santa Fe, New Mexico 87501 **Mailing Address** P.O. Box 2208 Santa Fe, NM 87504-2208

Aspen Boulder Carson City Colorado Springs Denver Denver Tech Center Billings Boise Cheyenne Jackson Hole Las Vegas Reno Salt Lake City Santa Fe Washington, D.C. ☏