

RECEIVED: <u>Y 18/2018</u>	REVIEWER: <u>mtm</u>	TYPE: <u>CTB</u>	APP NO: <u>pmam 1801857394</u>
-------------------------------	-------------------------	---------------------	-----------------------------------

ABOVE THIS TABLE FOR OCD DIVISION USE ONLY

**NEW MEXICO OIL CONSERVATION DIVISION**  
 - Geological & Engineering Bureau -  
 1220 South St. Francis Drive, Santa Fe, NM 87505

**ADMINISTRATIVE APPLICATION CHECKLIST**

THIS CHECKLIST IS MANDATORY FOR ALL ADMINISTRATIVE APPLICATIONS FOR EXCEPTIONS TO DIVISION RULES AND  
 REGULATIONS WHICH REQUIRE PROCESSING AT THE DIVISION LEVEL IN SANTA FE

**Applicant:** Matador Production Company **OGRID Number:** 228937  
**Well Name:** Stebbins 20 Fed Com Wells / Stebbins 19 Fed Com Wells **API:** Please see application  
**Pool:** Wildcat Bone Spring Pool **Pool Code:** 98015

**SUBMIT ACCURATE AND COMPLETE INFORMATION REQUIRED TO PROCESS THE TYPE OF APPLICATION  
 INDICATED BELOW**

- 1) **TYPE OF APPLICATION:** Check those which apply for [A]  
 A. Location - Spacing Unit - Simultaneous Dedication  
☐ NSL ☐ NSP (PROJECT AREA) ☐ NSP (PRORATION UNIT) ☐ SD
- B. Check one only for [I] or [II]  
 [I] Commingling - Storage - Measurement  
☐ DHC ☒ CTB ☐ PLC ☐ PC ☒ OLS ☒ OLM  
 [II] Injection - Disposal - Pressure Increase - Enhanced Oil Recovery  
☐ WFX ☐ PMX ☐ SWD ☐ IPI ☐ EOR ☐ PPR

2) **NOTIFICATION REQUIRED TO:** Check those which apply.

- A. ☐ Offset operators or lease holders  
 B. ☒ Royalty, overriding royalty owners, revenue owners  
 C. ☒ Application requires published notice  
 D. ☐ Notification and/or concurrent approval by SLO  
 E. ☒ Notification and/or concurrent approval by BLM  
 F. ☐ Surface owner  
 G. ☒ For all of the above, proof of notification or publication is attached, and/or,  
 H. ☐ No notice required

**FOR OCD ONLY**

- ☐ Notice Complete  
☐ Application  
 Content  
 Complete

RECEIVED OCD  
 2018 JAN 18 P 1:03

- 3) **CERTIFICATION:** I hereby certify that the information submitted with this application for administrative approval is **accurate** and **complete** to the best of my knowledge. I also understand that **no action** will be taken on this application until the required information and notifications are submitted to the Division.

**Note: Statement must be completed by an individual with managerial and/or supervisory capacity.**

Jordan L. Kessler

Print or Type Name

Signature

January 18, 2018

Date

505-988-4421

Phone Number

jlkessler@hollandhart.com

e-mail Address



January 18, 2018

**VIA HAND DELIVERY**

Heather Riley  
Oil Conservation Division  
New Mexico Department of Energy,  
Minerals and Natural Resources  
1220 South Saint Francis Drive  
Santa Fe, New Mexico 87505

RECEIVED OGD  
2018 JAN 18 P 1:03

**Re: Application of Matador Production Company for administrative approval for off-lease storage and measurement and approval to surface commingle (lease commingle) production from the spacing units comprised of the S/2 S/2 of Section 19, the N/2 S/2 of Section 20, and the S/2 S/2 of Section 20, Township 20 South, Range 29 East, NMPM, Eddy County, New Mexico.**

Dear Ms. Riley:

Matador Production Company (OGRID No. 228937) seeks administrative approval for off-lease measurement and approval to surface lease commingle production from the WC-015 G-04 S202920D, Bone Spring Pool (98015)) *from all existing and future wells and existing and future leases* drilled in the following areas of diverse ownership in Township 20 South, Range 29 East, NMPM, in Eddy County, New Mexico:

(a) The 160-acre standard spacing unit comprised of the S/2 S/2 of Section 19. The spacing unit is currently dedicated to the Stebbins 20 Fed No. 123H Well (API No. 30-015-44172). This well will produce from the WC-015 G-04 S202920D, Bone Spring Pool (98015).<sup>1</sup> This spacing unit is subject to compulsory pooling Order No. R-14433. ✓

(b) The 160-acre standard spacing unit comprised of the N/2 S/2 of Section 20. The spacing unit is currently dedicated to the Stebbins 20 Fed No. 123H Well (API No. 30-015-43201) and the Stebbins 20 Fed No. 133H Well (30-015-44183). Both wells are producing from the WC-015 G-04 S202920D, Bone Spring Pool (98015).<sup>2</sup> This spacing unit is subject to compulsory pooling Order No. R-14264. ✓

<sup>1</sup> This well is currently assigned to the Russell; Bone Spring Pool (52805). However, the BLM has approved and the Division is in the process of approving a Change of Pool to the WC-015 G-04 S202920D, Bone Spring Pool (98015).

<sup>2</sup> The Stebbins 20 Fed No. 123H Well is currently assigned to the Russell; Bone Spring Pool (52805). However, the BLM has approved and the Division is in the process of approving a Change of Pool to the WC-015 G-04 S202920D, Bone Spring Pool (98015).



(c) The 160-acre standard spacing unit comprised of the S/2 S/2 of Section 20. The spacing unit is currently dedicated to the Stebbins 20 Fed No. 124H Well (API No. 30-015-44185) and the Stebbins 20 Fed No. 134H Well (30-015-44175). Both wells are producing from the WC-015 G-04 S202920D, Bone Spring Pool (98015). This spacing unit is subject to compulsory pooling Order No. R-14433. 14263

Pursuant to NMAC 19.15.12.7, approved spacing units with diverse ownership are considered separate leases for surface commingling purposes. Matador seeks authority to surface commingle production according to the provisions of NMAC 19.15.12.10.C *from all existing and future wells* in these separate areas of diverse ownership at a surface facility located in the SW/4 SW (Unit M) of Section 20. Pursuant to 19.15.12.10(C)(4)(g), Matador also seeks authority to commingle gas production into the Longwood Gathering Line from future leases with notice provided only to interest owners within future leases. Prior to commingling, gas production from each well will be separately metered using individual test separators with calibrated orifice meters that are manufactured to AGA specifications. Oil production from each well will also be separately metered using a turbine meter.

**Exhibit 1** is a land plat showing Matador's current development and gathering system in the subject area. The plat identifies the wellbores, the spacing units, and the common surface facility located in the SW/4 SW/4 (Unit M) of Section 20. All lands in the N/2 of Section 11 and the N/2 of Section 12 are federal lands.

**Exhibit 2** is a completed Application for Surface Commingling (Diverse Ownership) and Off-Lease Measurement Form C-107-B with attachments.

**Exhibit 3** is a C-102 for each of the wells currently permitted or drilled within the existing spacing units.

**Exhibit 4** is a diagram of the surface facilities.

**Exhibit 5** is an affidavit of publication directed to interest owners without known addresses.

**Exhibit 6** is a list of the interest owners affected by this request for approval to off-lease measure and surface commingle production. A copy of this application with all attachments has been sent by certified mail to all affected parties advising them that if they have an objection they must file it in writing with the division within 20 days from the date the Division receives Matador's application.

**Exhibit 7** is Form 1004-0137 reflecting BLM approval of pool change.





Your attention to this matter is appreciated.

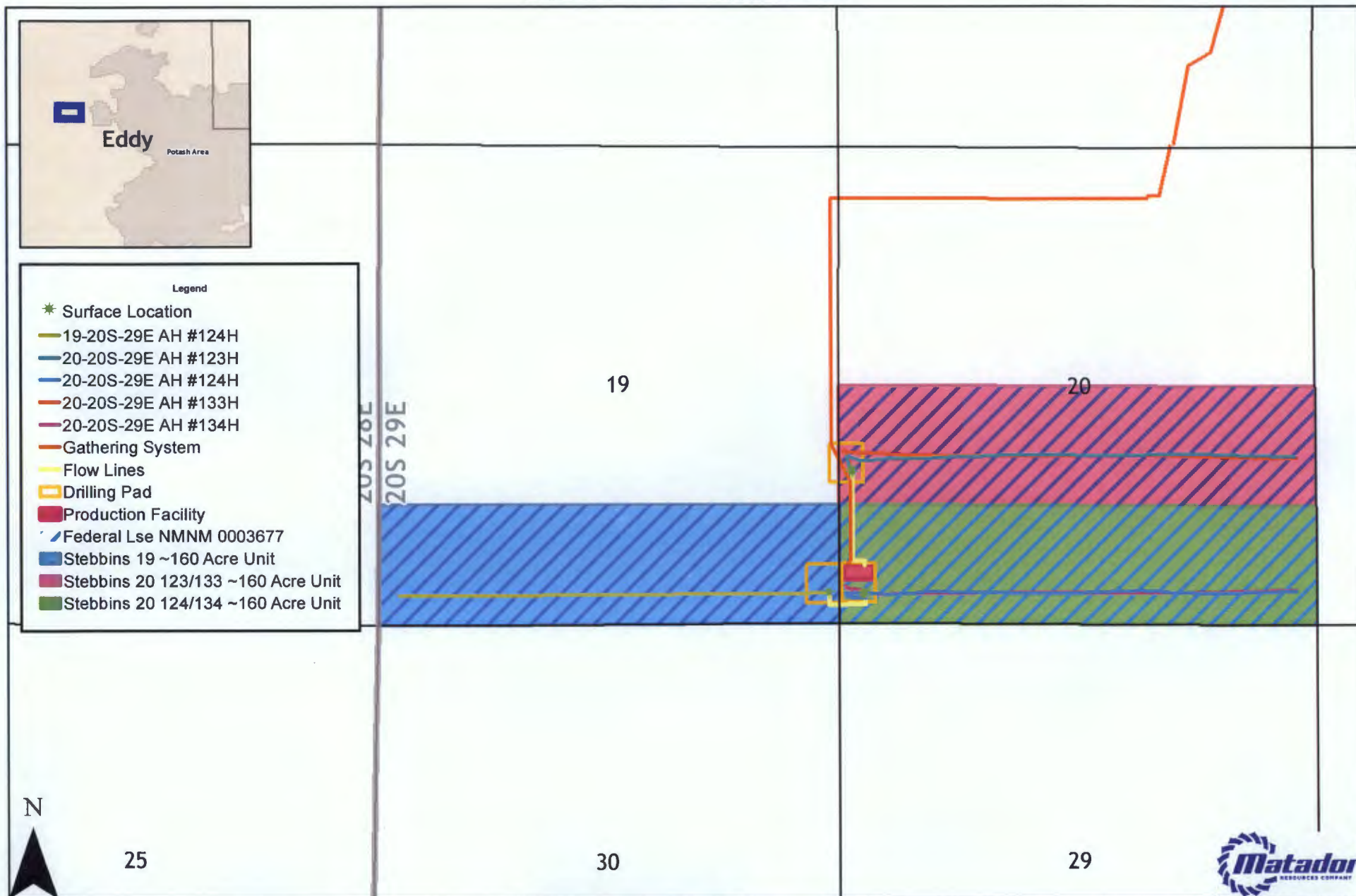
Sincerely,

A handwritten signature in blue ink, appearing to read "J. L. Kessler", written over a light green rectangular background.

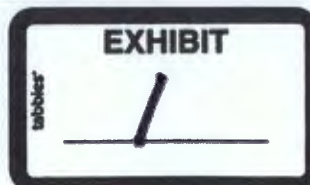
Jordan L. Kessler

**ATTORNEY FOR MATADOR PRODUCTION  
COMPANY**

# Stebbins Land Plat



0 750 1,500 3,000 Feet



Southeast New Mexico

Date: January 4, 2018  
 Filename: ComminglingLandPlat\_Master  
 Projection: NAD27 State Plane New Mexico East FIPS 3001  
 Sources: IHS; ESRI;

District I  
1625 N. French Drive, Hobbs, NM 88240  
District II  
811 S. First St., Artesia, NM 88210  
District III  
1000 Rio Brazos Road, Aztec, NM 87410  
District IV  
1220 S. St Francis Dr, Santa Fe, NM  
87505

State of New Mexico  
Energy, Minerals and Natural Resources Department

Form C-107-B  
Revised August 1, 2011

**OIL CONSERVATION DIVISION**  
1220 S. St Francis Drive  
Santa Fe, New Mexico 87505

Submit the original  
application to the Santa Fe  
office with one copy to the  
appropriate District Office.

**APPLICATION FOR SURFACE COMMINGLING (DIVERSE OWNERSHIP)**

OPERATOR NAME: Matador Production Company  
OPERATOR ADDRESS: 5400 LBJ Freeway Tower 1 Suite 1500 Dallas, TX 75240  
APPLICATION TYPE:

☐ Pool Commingling ☒ Lease Commingling ☐ Pool and Lease Commingling ☒ Off-Lease Storage and Measurement (Only if not Surface Commingling)

LEASE TYPE: ☐ Fee ☐ State ☒ Federal

Is this an Amendment to existing Order? ☐ Yes ☒ No If "Yes", please include the appropriate Order No. \_\_\_\_\_  
Have the Bureau of Land Management (BLM) and State Land office (SLO) been notified in writing of the proposed commingling  
☒ Yes ☐ No

**(A) POOL COMMINGLING**  
Please attach sheets with the following information

(1) Pool Names and Codes	Gravities / BTU of Non-Commingled Production	Calculated Gravities / BTU of Commingled Production	Calculated Value of Commingled Production	Volumes

- (2) Are any wells producing at top allowables? ☐ Yes ☐ No  
(3) Has all interest owners been notified by certified mail of the proposed commingling? ☐ Yes ☐ No.  
(4) Measurement type: ☐ Metering ☐ Other (Specify)  
(5) Will commingling decrease the value of production? ☐ Yes ☐ No If "yes", describe why commingling should be approved

**(B) LEASE COMMINGLING**  
Please attach sheets with the following information

- (1) Pool Name and Code- WC-015 G-04 S202920D; Bone Spring (98015)  
(2) Is all production from same source of supply? ☒ Yes ☐ No  
(3) Has all interest owners been notified by certified mail of the proposed commingling? ☒ Yes ☐ No  
(4) Measurement type: ☒ Metering ☐ Other (Specify)

**(C) POOL and LEASE COMMINGLING**  
Please attach sheets with the following information

- (1) Complete Sections A and E.

**(D) OFF-LEASE STORAGE and MEASUREMENT**  
Please attached sheets with the following information

- (1) Is all production from same source of supply? ☒ Yes ☐ No  
(2) Include proof of notice to all interest owners.

**(E) ADDITIONAL INFORMATION (for all application types)**  
Please attach sheets with the following information

- (1) A schematic diagram of facility, including legal location.  
(2) A plat with lease boundaries showing all well and facility locations. Include lease numbers if Federal or State lands are involved.  
(3) Lease Names, Lease and Well Numbers, and API Numbers.

I hereby certify that the information above is true and complete to the best of my knowledge and belief.

SIGNATURE: Ben Peterson TITLE: Senior Production Engineer DATE: 4/10/18

TYPE OR PRINT NAME Ben Peterson TELEPHONE NO.: (972) 371-5427

E-MAIL ADDRESS: bpeterson@matadorresources.com

EXHIBIT

2



# Matador Production Company

One Lincoln Centre • 5400 LBJ Freeway • Suite 1500 • Dallas, Texas 75240  
Voice 972.371.5427 • Fax 972.371.5201  
[bpeterson@matadorresources.com](mailto:bpeterson@matadorresources.com)

---

**Benjamin D. Peterson**  
Senior Production Engineer

January 11, 2018

New Mexico Oil Conservation Division  
1220 South St. Francis Drive  
Santa Fe, NM 87505

**Re: Application of Matador Production Company for administrative approval to surface commingle (lease commingle) oil and gas production from the spacing units comprised of the N/2 S/2 and S/2 S/2 of Section 20 and the S/2 S/2 of Section 19, Township 20 South, Range 29 East, NMPM, Eddy County, New Mexico (the "Lands")**

To Whom This May Concern,

Matador Production Company ("Matador"), OGRID: 228937, requests to commingle current oil and gas production from five (5) distinct wells located on the Lands and future production from the Lands as described herein. All wells will be metered through individual test separators with an oil turbine meter and gas orifice meter. The gas commingling will occur after individual measurement at each well. Gas exiting each well test flows into one gathering line, as depicted on **Exhibit A**, the Longwood Gathering line. Each well on the Lands will have its own test separator with an orifice meter manufactured and assembled in accordance with American Gas Association (AGA) specifications. All primary and secondary Electronic Flow Measurement (EFM) equipment is tested and calibrated by a reputable third party measurement company in accordance with industry specifications.

The orifice meter is the preferred measurement device utilized by midstream and E&P companies in natural gas measurement. The gas samples are obtained at the time of the meter testing/calibration and the composition and heating value are determined by a laboratory in accordance with American Petroleum Institute (API) specifications to ensure accurate volume and Energy (MMBTU) determinations. See example from Fesco Laboratory attached as **Exhibit B** hereto.

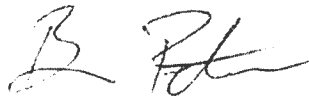
The flow stream from each wellhead is demonstrated in the Process Flow Diagram (PFD) attached as **Exhibit A** hereto. The PFD shows that the water, oil, and gas leave the wellbore and flow into a wellhead test separator which separates the oil, gas, and water. The oil is measured via turbine meter which is calibrated periodically in accordance with industry specifications by a third party measurement company for accuracy. The gas is measured on a volume and MMBTU basis by an orifice meter and supporting EFM equipment in accordance with American Petroleum Association

(API) Chapter 21.1. The gas is then sent into a gathering line where it is commingled with each of the other wells' metered gas. The gathering line gas is then metered by another orifice meter at the tank battery check to show the total volume of gas leaving the Tank Battery. This meter is tested and calibrated in accordance with industry specifications and volume and energy are determined on an hourly, daily, and monthly basis. Once the gas exits this final tank battery sales check it travels directly into a third party sales connect meter. Longwood Gathering has its own orifice meter that measures the gas for custody transfer. These meters are also calibrated periodically to ensure the measurement accuracy.

In conclusion, all the oil and gas produced on the Lands is and will be metered at each wellhead and allocated correctly using the same measurement equipment as the pipeline sales measurement specifications accepted by API as industry standard.

Very truly yours,

MATADOR PRODUCTION COMPANY

A handwritten signature in black ink, appearing to read 'B. Peterson', written in a cursive style.

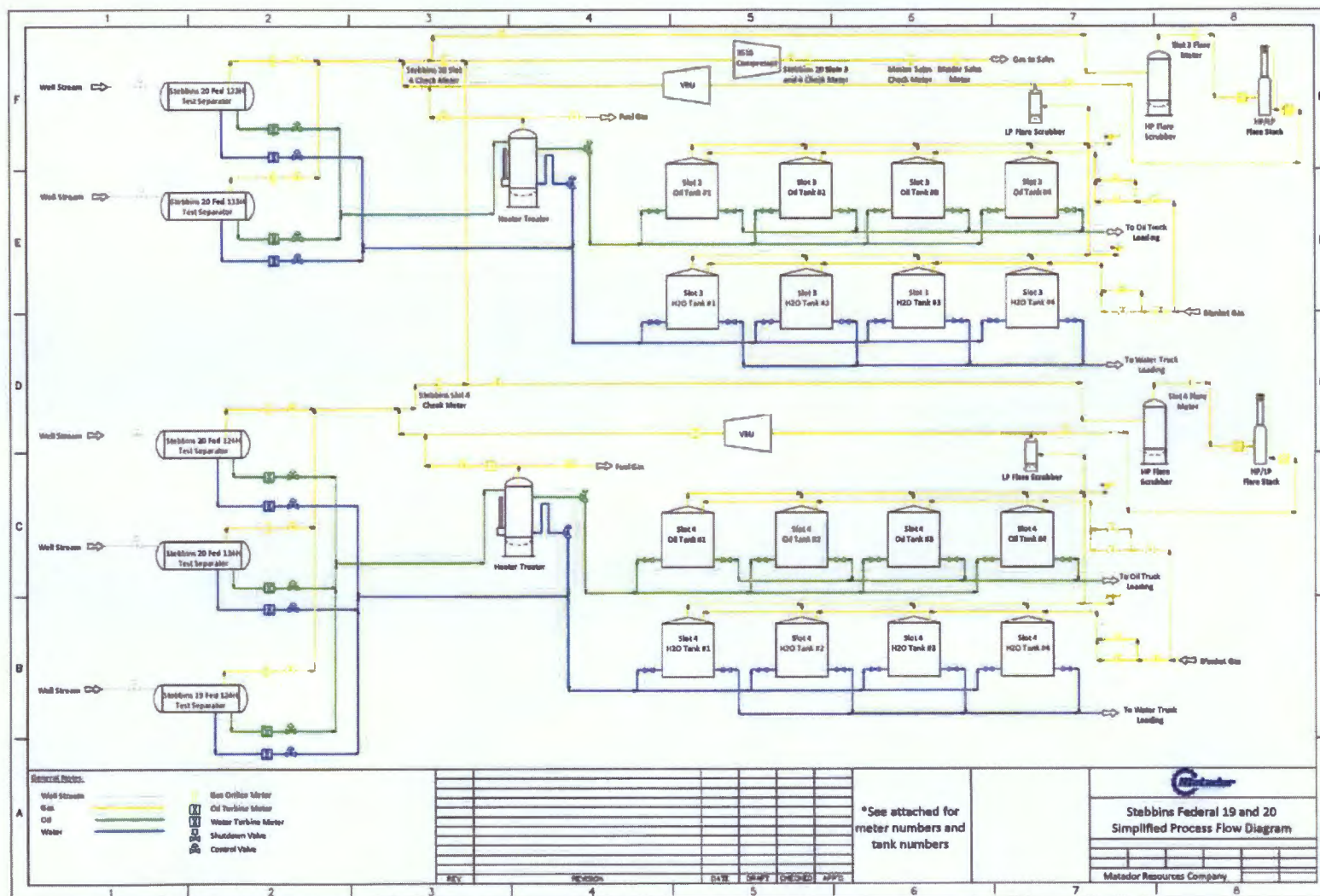
Benjamin D. Peterson  
Sr. Production Engineer



Stebbins

# EXHIBIT

# A





May 22, 2017

FESCO, Ltd.  
1100 Fesco Ave. - Alice, Texas 78332

For: Matador Production Company  
One Lincoln Centre  
5400 LBJ Freeway, Suite 1500  
Dallas, Texas 75240

Sample: Stebbins 20 Federal No. 123H  
High Pressure Separator Gas  
Spot Gas Sample @ 204 psig & 102 °F

Date Sampled: 05/03/2017

Job Number: 72177.001

**CHROMATOGRAPH EXTENDED ANALYSIS - GPA 2286**

COMPONENT	MOL%	GPM
Hydrogen Sulfide*	< 0.001	
Nitrogen	1.684	
Carbon Dioxide	0.162	
Methane	73.014	
Ethane	14.145	3.777
Propane	6.732	1.852
Isobutane	0.830	0.271
n-Butane	1.851	0.583
2-2 Dimethylpropane	0.004	0.002
Isopentane	0.395	0.144
n-Pentane	0.409	0.148
Hexanes	0.256	0.105
Heptanes Plus	<u>0.514</u>	<u>0.194</u>
Totals	99.996	7.075

**Computed Real Characteristics Of Heptanes Plus:**

Specific Gravity ----- 3.217 (Air=1)  
Molecular Weight ----- 92.79  
Gross Heating Value ----- 4669 BTU/CF

**Computed Real Characteristics Of Total Sample:**

Specific Gravity ----- 0.774 (Air=1)  
Compressibility (Z) ----- 0.9959  
Molecular Weight ----- 22.32  
Gross Heating Value  
Dry Basis ----- 1314 BTU/CF  
Saturated Basis ----- 1292 BTU/CF

\*Hydrogen Sulfide tested on location b Stain Tube Method (GPA 2377)  
<0.013 Gr/100 CF, <0.2 PPMV or <0.001 Mol %

Base Conditions: 14.650 PSI & 60 Deg F

Sampled By: (24) Amiot  
Analyst: MR  
Processor: ANB  
Cylinder ID: T-5312

Certified: FESCO, Ltd. - Alice, Texas

David Darrnaus 361-881-7013

**CHROMATOGRAPH EXTENDED ANALYSIS - GPA 2286  
TOTAL REPORT**

COMPONENT	MOL %	GPM	WT %
Hydrogen Sulfide*	< 0.001		< 0.001
Nitrogen	1.684		2.114
Carbon Dioxide	0.162		0.319
Methane	73.014		52.481
Ethane	14.145	3.777	19.058
Propane	6.732	1.852	13.301
Isobutane	0.830	0.271	2.162
n-Butane	1.851	0.583	4.821
2,2 Dimethylpropane	0.004	0.002	0.013
Isopentane	0.395	0.144	1.277
n-Pentane	0.409	0.148	1.322
2,2 Dimethylbutane	0.003	0.001	0.012
Cyclopentane	0.000	0.000	0.000
2,3 Dimethylbutane	0.034	0.014	0.131
2 Methylpentane	0.081	0.034	0.313
3 Methylpentane	0.042	0.017	0.162
n-Hexane	0.096	0.039	0.371
Methylcyclopentane	0.056	0.019	0.211
Benzene	0.078	0.022	0.273
Cyclohexane	0.114	0.039	0.430
2-Methylhexane	0.012	0.006	0.054
3-Methylhexane	0.013	0.006	0.058
2,2,4 Trimethylpentane	0.000	0.000	0.000
Other C7's	0.036	0.016	0.160
n-Heptane	0.026	0.012	0.117
Methylcyclohexane	0.068	0.027	0.299
Toluene	0.039	0.013	0.161
Other C8's	0.032	0.015	0.158
n-Octane	0.009	0.005	0.046
Ethylbenzene	0.002	0.001	0.010
M & P Xylenes	0.007	0.003	0.033
O-Xylene	0.002	0.001	0.010
Other C9's	0.012	0.006	0.068
n-Nonane	0.002	0.001	0.011
Other C10's	0.004	0.002	0.025
n-Decane	0.001	0.001	0.006
Undecanes (11)	<u>0.001</u>	<u>0.001</u>	<u>0.007</u>
Totals	99.996	7.075	99.994

**Computed Real Characteristics Of Total Sample:**

Specific Gravity -----	0.774	(Air=1)
Compressibility (Z) -----	0.9959	
Molecular Weight -----	22.32	
Gross Heating Value		
Dry Basis -----	1314	BTU/CF
Saturated Basis -----	1292	BTU/CF



District I  
1625 N. French Dr., Hobbs, NM 88240  
Phone: (575) 393-6161 Fax: (575) 393-0720  
District II  
811 S. First St., Artesia, NM 88210  
Phone: (575) 748-1283 Fax: (575) 748-9720  
District III  
1000 Rio Brazos Road, Aztec, NM 87410  
Phone: (505) 334-6178 Fax: (505) 334-6170  
District IV  
1220 S. St. Francis Dr., Santa Fe, NM 87505  
Phone: (505) 476-3460 Fax: (505) 476-3462

State of New Mexico  
Energy, Minerals & Natural Resources  
Department  
OIL CONSERVATION DIVISION  
1220 South St. Francis Dr.  
Santa Fe, NM 87505

FORM C-102  
Revised August 1, 2011  
Submit one copy to appropriate  
District Office

☐ AMENDED REPORT

WELL LOCATION AND ACREAGE DEDICATION PLAT

<sup>1</sup> API Number 30-015-44172		<sup>2</sup> Pool Code 52805		<sup>3</sup> Pool Name Russell; Bone Spring	
<sup>4</sup> Property Code 317744		<sup>5</sup> Property Name STEBBINS 19 FED			<sup>6</sup> Well Number #124H
<sup>7</sup> OGRID No. 228937		<sup>8</sup> Operator Name MATADOR PRODUCTION COMPANY			<sup>9</sup> Elevation 3241'

<sup>10</sup>Surface Location

UL or lot no.	Section	Township	Range	Lot Idn	Feet from the	North/South line	Feet from the	East/West line	County
P	19	20-S	29-E	-	180'	SOUTH	110'	EAST	EDDY

UL or lot no.	Section	Township	Range	Lot Idn	Feet from the	North/South line	Feet from the	East/West line	County
4	19	20-S	29-E	-	330'	SOUTH	240'	WEST	EDDY

<sup>11</sup> Dedicated Acres 155.90	<sup>12</sup> Joint or Infill	<sup>13</sup> Consolidation Code	<sup>14</sup> Order No.
---	-------------------------------	----------------------------------	-------------------------

No allowable will be assigned to this completion until all interests have been consolidated or a non-standard unit has been approved by the division.

<p><b>11 BOTTOM HOLE LOCATION</b> NEW MEXICO EAST NAD 1927 X=565364 Y=564787 LAT.: N 32.5525288 LONG.: W 104.1211980 NAD 1983 X=565546 Y=564848 LAT.: N 32.5526468 LONG.: W 104.1217008</p>			<p><b>12 LAST PERFORATION POINT</b> NEW MEXICO EAST NAD 1927 X=565454 Y=564787 LAT.: N 32.5525282 LONG.: W 104.1209039 NAD 1983 X=565635 Y=564848 LAT.: N 32.5526465 LONG.: W 104.1214087</p>			<p><b>13 FIRST PERFORATION POINT</b> NEW MEXICO EAST NAD 1927 X=565939 Y=564789 LAT.: N 32.5525090 LONG.: W 104.1083474 NAD 1983 X=561120 Y=564851 LAT.: N 32.5526274 LONG.: W 104.1088518</p>			<p><b>14 SURFACE LOCATION</b> NEW MEXICO EAST NAD 1927 X=570180 Y=564639 LAT.: N 32.5520955 LONG.: W 104.1058336 NAD 1983 X=5611340 Y=564701 LAT.: N 32.5522140 LONG.: W 104.1061379</p>			<p><b>17 OPERATOR CERTIFICATION</b> I hereby certify that the information contained herein is true and complete to the best of my knowledge and belief, and that this operation either owns a working interest or undivided mineral interest in the land underlying the proposed bottom hole location or has a right to drill this well at this location pursuant to a contract with an owner of such a mineral or working interest, or to a voluntary pooling agreement or a compulsory pooling order heretofore entered by the division.</p> <p><i>Tammy R. Link</i> 9/6/2017 Signature Date Printed Name tlink@matadorresources.com E-mail Address</p>		
<p><b>18 SURVEYOR CERTIFICATION</b> I hereby certify that the well location shown on this plat was plotted from field notes of actual surveys made by me or under my supervision, and that the same is true to the best of my belief.</p> <p>08/03/2017 Date of Survey Signature MICHAEL J. BROWN NEW MEXICO 16320 PROFESSIONAL SURVEYOR Certificate Number</p>														



District I  
1625 N French Dr., Hobbs, NM 88240  
Phone: (575) 393-6161 Fax: (575) 393-0720  
District II  
811 S First St., Artesia, NM 88210  
Phone: (575) 748-1283 Fax: (575) 748-9720  
District III  
1000 Rio Brazos Road, Aztec, NM 87410  
Phone: (505) 334-6176 Fax: (505) 334-6170  
District IV  
1320 S. St. Francis Dr., Santa Fe, NM 87505  
Phone: (505) 476-3460 Fax: (505) 476-3462

State of New Mexico  
Energy, Minerals & Natural Resources  
Department  
OIL CONSERVATION DIVISION  
1220 South St. Francis Dr.  
Santa Fe, NM 87505

**NM OIL CONSERVATION**  
ARTESIA DISTRICT  
JAN 23 2017

FORM C-102

Revised August 1, 2011

Submit one copy to appropriate

District Office

RECEIVED ☐ AMENDED REPORT

**WELL LOCATION AND ACREAGE DEDICATION PLAT** Bone Spring 2nd Carb

<sup>1</sup> API Number 30-015-43201	<sup>2</sup> Pool Code 98015	<sup>3</sup> Pool Name WC-015 G-04 S202920D BONE SPRING
<sup>4</sup> Property Code 315007	<sup>5</sup> Property Name STEBBINS 20 FED	<sup>6</sup> Well Number #123H
<sup>7</sup> GRID No. 228937	<sup>8</sup> Operator Name MATADOR PRODUCTION COMPANY	<sup>9</sup> Elevation 3245'

<sup>10</sup>Surface Location

UL or lot no.	Section	Township	Range	Lot Idn	Feet from the	North/South line	Feet from the	East/West line	County
L	20	20-S	29-E	-	1693'	SOUTH	130'	WEST	EDDY

UL or lot no.	Section	Township	Range	Lot Idn	Feet from the	North/South line	Feet from the	East/West line	County
I	20	20-S	29-E	-	1870'	SOUTH	240'	EAST	EDDY

<sup>13</sup> Dedicated Acres 160	<sup>14</sup> Joint or Infill	<sup>15</sup> Consolidation Code	<sup>16</sup> Order No.
--------------------------------------	-------------------------------	----------------------------------	-------------------------

No allowable will be assigned to this completion until all interests have been consolidated or a non-standard unit has been approved by the division.

<p><b>SURFACE LOCATION</b> NEW MEXICO EAST NAD 1927 X=570396 Y=566163 LAT.: N 32.5562535 LONG.: W 104.1048559 NAD 1983 X=611576 Y=566214 LAT.: N 32.5563719 LONG.: W 104.1053603 ELEV = 3245'</p>	<p><b>FIRST PERFORATION POINT</b> NEW MEXICO EAST NAD 1927 X=570596 Y=566329 LAT.: N 32.5567380 LONG.: W 104.1042068 NAD 1983 X=611776 Y=566390 LAT.: N 32.5568564 LONG.: W 104.1047112</p>	<p><b>LAST PERFORATION POINT</b> NEW MEXICO EAST NAD 1927 X=575225 Y=566325 LAT.: N 32.5566988 LONG.: W 104.0891804 NAD 1983 X=616405 Y=566386 LAT.: N 32.5568174 LONG.: W 104.0898444</p>	<p><b>BOTTOM HOLE LOCATION</b> NEW MEXICO EAST NAD 1927 X=575315 Y=566325 LAT.: N 32.5566981 LONG.: W 104.0888883 NAD 1983 X=616495 Y=566386 LAT.: N 32.5568167 LONG.: W 104.0893923</p>	<p><b>17 OPERATOR CERTIFICATION</b> I hereby certify that the information contained herein is true and complete to the best of my knowledge and belief and that this information reflects what is existing surface as indicated on the map including the proposed bottom hole location as has a right to drill this well at the surface presented to a contract with no other of such is required or existing surface as to a satisfactory person approved or a satisfactory person under the surface shown by the division.  Signature: <i>Brian Wood</i> Date: 8-23-16 Printed Name: BRIAN WOOD E-mail Address: brian@permitswest.com E-mail Address: (505) 466-8120</p>
				<p><b>18 SURVEYOR CERTIFICATION</b> I hereby certify that the well location shown on this plat was plotted from field notes of actual survey made by me or under my supervision and that the same is true to the best of my belief.  Date of Survey: 04/06/2016 Signature and Seal of Professional Surveyor: <i>Michael R. Brown</i> Certificate Number: 18339</p>

S:\SURVEY\MATADOR\_RESOURCES\STEBBINS\_FEDERAL\_20-205-29E\_AH\_123H\ORIGINAL\_PRODUCT\SILO\_STEBBINS\_FEDERAL\_20-205-29E\_AH\_123H.DWG 5/16/2016 8:13:26 AM jstov

EXHIBIT

3



District I  
1625 N French Dr., Hobbs, NM 88240  
Phone: (575) 393-6161 Fax: (575) 393-0720  
District II  
811 S. First St., Artesia, NM 88210  
Phone: (575) 748-1283 Fax: (575) 748-9720  
District III  
1000 Rio Brazos Road, Aztec, NM 87410  
Phone: (505) 334-6178 Fax: (505) 334-6170  
District IV  
1220 S. St. Francis Dr., Santa Fe, NM 87505  
Phone: (505) 476-3460 Fax: (505) 476-3462

**NM OIL CONSERVATION**  
State of New Mexico  
Energy, Minerals & Natural Resources  
Department  
**OIL CONSERVATION DIVISION**  
1220 South St. Francis Dr.  
Santa Fe, NM 87505

FORM C-102  
Revised August 1, 2011  
Submit one copy to appropriate  
District Office

☐ AMENDED REPORT

**WELL LOCATION AND ACREAGE DEDICATION PLAT** \*3rd Bone Spring sand

API Number <b>30-015- 44183</b>	Pool Code <b>98015</b>	Pool Name <b>WC-015 G-04 S202920D; BONE SPRING*</b>
Property Code <b>315007</b>	Property Name <b>STEBBINS 20 FED</b>	
Well Number <b>#133H</b>	Operator Name <b>MATADOR PRODUCTION COMPANY</b>	
GRID No. <b>228937</b>	Elevation <b>3245'</b>	

**10 Surface Location**

UL or lot no.	Section	Township	Range	Lot Idn	Feet from the	North/South line	Feet from the	East/West line	County
<b>L</b>	<b>20</b>	<b>20-S</b>	<b>29-E</b>	<b>-</b>	<b>1723'</b>	<b>SOUTH</b>	<b>130'</b>	<b>WEST</b>	<b>EDDY</b>

UL or lot no.	Section	Township	Range	Lot Idn	Feet from the	North/South line	Feet from the	East/West line	County
<b>I</b>	<b>20</b>	<b>20-S</b>	<b>29-E</b>	<b>-</b>	<b>1870'</b>	<b>SOUTH</b>	<b>240'</b>	<b>EAST</b>	<b>EDDY</b>

Dedicated Acres <b>160</b>	Joint or Infill	Consolidation Code	Order No.
-------------------------------	-----------------	--------------------	-----------

No allowable will be assigned to this completion until all interests have been consolidated or a non-standard unit has been approved by the division.

<p><b>SURFACE LOCATION</b> NEW MEXICO EAST NAD 1927 X=570396 Y=566183 LAT.: N 32.5563360 LONG.: W 104.1048556 NAD 1983 X=611576 Y=566244 LAT.: N 32.5564544 LONG.: W 104.1053600 ELEV = 3245'</p>	<p><b>FIRST PERFORATION POINT</b> NEW MEXICO EAST NAD 1927 X=570596 Y=566329 LAT.: N 32.5567380 LONG.: W 104.1042068 NAD 1983 X=611778 Y=566390 LAT.: N 32.5568564 LONG.: W 104.1047112</p>	<p><b>LAST PERFORATION POINT</b> NEW MEXICO EAST NAD 1927 X=575225 Y=566325 LAT.: N 32.5566988 LONG.: W 104.0891804 NAD 1983 X=616405 Y=566386 LAT.: N 32.5568174 LONG.: W 104.0896844</p>	<p><b>BOTTOM HOLE LOCATION</b> NEW MEXICO EAST NAD 1927 X=575315 Y=566325 LAT.: N 32.5566981 LONG.: W 104.0888883 NAD 1983 X=616495 Y=566386 LAT.: N 32.5568167 LONG.: W 104.0893923</p>	<p><b>17 OPERATOR CERTIFICATION</b> I hereby certify that the information contained herein is true and complete to the best of my knowledge and belief, and that this organization either owns a working interest or undivided mineral interest in the land underlying the proposed bottom hole location or has a right to drill this well at this location pursuant to a contract with an owner of such a mineral or working interest, or to a voluntary pooling agreement or a compulsory pooling order heretofore entered by the division.</p> <p style="text-align: right;"><i>Brian Wood</i> Signature <b>8-25-16</b> Date</p> <p><b>BRIAN WOOD</b> Printed Name brian@permitswest.com E-mail Address (505) 466-8120</p>
				<p><b>18 SURVEYOR CERTIFICATION</b> I hereby certify that the well location shown on this plat was plotted from field notes of actual surveys made by me or under my supervision, and that the same is true to the best of my belief.</p> <p style="text-align: right;"><b>04/06/2016</b> Date of Survey</p> <p style="text-align: right;"><i>Michael R. Brown</i> Signature and Seal of Professional Surveyor</p> <p style="text-align: center;"><b>MICHAEL R. BROWN</b> NEW MEXICO 18329 PROFESSIONAL SURVEYOR</p> <p>Certificate Number</p>



District I  
1625 N. French Dr., Hobbs, NM 88240  
Phone: (575) 393-6161 Fax: (575) 393-0720  
District II  
811 S. First St., Artesia, NM 88210  
Phone: (575) 748-1283 Fax: (575) 748-9720  
District III  
1000 Rio Brazos Road, Aztec, NM 87410  
Phone: (505) 334-6178 Fax: (505) 334-6170  
District IV  
1220 S. St. Francis Dr., Santa Fe, NM 87505  
Phone: (505) 476-3460 Fax: (505) 476-3462

State of New Mexico  
Energy, Minerals & Natural Resources  
Department  
OIL CONSERVATION DIVISION  
1220 South St. Francis Dr.  
Santa Fe, NM 87505

NM OIL CONSERVATION

ARTESIA DISTRICT

FORM C-102

Revised August 1, 2011

JUL 24 2017 Submit one copy to appropriate

District Office

RECEIVED

☐ AMENDED REPORT

WELL LOCATION AND ACREAGE DEDICATION PLAT

<sup>1</sup> API Number 30-015-44185	<sup>2</sup> Pool Code 98015	<sup>3</sup> Pool Name WC-015 G-04 S202920D; BONE SPRING
<sup>4</sup> Property Code 315007	<sup>5</sup> Property Name STEBBINS 20 FED	<sup>6</sup> Well Number #124H
<sup>7</sup> OGR/D No. 228937	<sup>8</sup> Operator Name MATADOR PRODUCTION COMPANY	<sup>9</sup> Elevation 3246'

<sup>10</sup>Surface Location

UL or lot no.	Section	Township	Range	Lot Idn	Feet from the	North/South line	Feet from the	East/West line	County
M	20	20-S	29-E	-	331'	SOUTH	260'	WEST	EDDY

UL or lot no.	Section	Township	Range	Lot Idn	Feet from the	North/South line	Feet from the	East/West line	County
P	20	20-S	29-E	-	330'	SOUTH	240'	EAST	EDDY

<sup>12</sup> Dedicated Acres 160	<sup>13</sup> Joint or Infill	<sup>14</sup> Consolidation Code	<sup>15</sup> Order No.
--------------------------------------	-------------------------------	----------------------------------	-------------------------

No allowable will be assigned to this completion until all interests have been consolidated or a non-standard unit has been approved by the division.

<p><b>SURFACE LOCATION</b> NEW MEXICO EAST NAD 1927 X=570529 Y=564790 LAT.: N 32.5525080 LONG.: W 104.1044325 NAD 1983 X=611709 Y=564851 LAT.: N 32.5526265 LONG.: W 104.1049368 ELEV = 3246'</p>	<p><b>FIRST PERFORATION POINT</b> NEW MEXICO EAST NAD 1927 X=570599 Y=564789 LAT.: N 32.5525048 LONG.: W 104.1042054 NAD 1983 X=611779 Y=564850 LAT.: N 32.5526233 LONG.: W 104.1047097</p>	<p><b>LAST PERFORATION POINT</b> NEW MEXICO EAST NAD 1927 X=575229 Y=564785 LAT.: N 32.5524656 LONG.: W 104.0891795 NAD 1983 X=616410 Y=564846 LAT.: N 32.5525843 LONG.: W 104.0896834</p>	<p><b>BOTTOM HOLE LOCATION</b> NEW MEXICO EAST NAD 1927 X=575319 Y=564785 LAT.: N 32.5524648 LONG.: W 104.0888874 NAD 1983 X=616500 Y=564846 LAT.: N 32.5525835 LONG.: W 104.0893913</p>	<p><b>17 OPERATOR CERTIFICATION</b></p> <p>For a fully and the operator, I hereby certify that the information provided on this plat is true and correct to the best of my knowledge and belief.</p> <p><i>Brian Wood</i> 6-23-17 Signature Date</p> <p>BRIAN WOOD Printed Name</p> <p>brian@permitswest.com E-mail Address</p> <p>(505) 466-8120</p>
				<p><b>18 SURVEYOR CERTIFICATION</b></p> <p>I, the undersigned, being a duly qualified and licensed Professional Surveyor of the State of New Mexico, do hereby certify that the foregoing is a true and correct copy of the original survey plat on file in my office.</p> <p>06/21/2017 Date of Survey</p> <p><i>Michael B. Brown</i> Signature and Seal of Professional Surveyor</p> <p>MICHAEL B. BROWN NEW MEXICO 18329 PROFESSIONAL SURVEYOR</p> <p>Certificate Number</p>



District I  
1625 N. French Dr., Hobbs, NM 88240  
Phone: (505) 393-6161 Fax: (505) 393 0720  
District II  
811 S. First St., Artesia, NM 88210  
Phone: (505) 748-1283 Fax: (505) 748-9720  
District III  
1000 Rio Brazos Road, Aztec, NM 87410  
Phone: (505) 334-6178 Fax: (505) 334-6170  
District IV  
1220 S. St. Francis Dr., Santa Fe, NM 87505  
Phone: (505) 476-3460 Fax: (505) 476-3462

State of New Mexico  
Energy, Minerals & Natural Resources  
Department  
OIL CONSERVATION DIVISION  
1220 South St. Francis Dr.  
Santa Fe, NM 87505

NM OIL CONSERVATION

ARTESIA DISTRICT

FORM C-102

Revised August 1, 2011

Submit one copy to appropriate

District Office

RECEIVED

☐ AMENDED REPORT

WELL LOCATION AND ACREAGE DEDICATION PLAT

<sup>1</sup> API Number 30-015-44175	<sup>2</sup> Pool Code 98015	<sup>3</sup> Pool Name WC-015 G-04 S202920D. BONE SPRING
<sup>4</sup> Property Code 315007	<sup>5</sup> Property Name STEBBINS 20 FED	<sup>6</sup> Well Number #134H
<sup>7</sup> GRID No. 228937	<sup>8</sup> Operator Name MATADOR PRODUCTION COMPANY	<sup>9</sup> Elevation 3245'

<sup>10</sup>Surface Location

UL or lot no.	Section	Township	Range	Lot Idn	Feet from the	North/South line	Feet from the	East/West line	County
M	20	20-S	29-E	-	361'	SOUTH	260'	WEST	EDDY

UL or lot no.	Section	Township	Range	Lot Idn	Feet from the	North/South line	Feet from the	East/West line	County
P	20	20-S	29-E	-	330'	SOUTH	240'	EAST	EDDY

<sup>11</sup> Dedicated Acres 160	<sup>12</sup> Joint or Infill	<sup>13</sup> Consolidation Code	<sup>14</sup> Order No.
--------------------------------------	-------------------------------	----------------------------------	-------------------------

No allowable will be assigned to this completion until all interests have been consolidated or a non-standard unit has been approved by the division.

<p><b>SURFACE LOCATION</b> NEW MEXICO EAST NAD 1927 X=570529 Y=564820 LAT.: N 32.5525904 LONG.: W 104.1044326 NAD 1983 X=611709 Y=564881 LAT.: N 32.5527089 LONG.: W 104.1049389 ELEV = 3245'</p>	<p><b>FIRST PERFORATION POINT</b> NEW MEXICO EAST NAD 1927 X=570599 Y=564789 LAT.: N 32.5525048 LONG.: W 104.1042054 NAD 1983 X=611779 Y=564850 LAT.: N 32.5526233 LONG.: W 104.1047097</p>	<p><b>LAST PERFORATION POINT</b> NEW MEXICO EAST NAD 1927 X=575229 Y=564785 LAT.: N 32.5524656 LONG.: W 104.0891795 NAD 1983 X=616410 Y=564846 LAT.: N 32.5525843 LONG.: W 104.0896834</p>	<p><b>BOTTOM HOLE LOCATION</b> NEW MEXICO EAST NAD 1927 X=575318 Y=564785 LAT.: N 32.5524648 LONG.: W 104.0888874 NAD 1983 X=616500 Y=564846 LAT.: N 32.5525835 LONG.: W 104.0893913</p>	<p><b><sup>17</sup>OPERATOR CERTIFICATION</b> I hereby certify that the information submitted herein is true and correct to the best of my knowledge and belief and that the representation that this is a well location is a true and correct representation of the facts as they exist.  Signature: <i>Brian Wood</i> Date: 6-25-17 Printed Name: BRIAN WOOD E-mail Address: brian@permitswest.com E-mail Address: (505) 466-8120</p> <p><b><sup>18</sup>SURVEYOR CERTIFICATION</b> I hereby certify that the well location shown on this plat is plotted from field notes of a true and correct survey and that the same is true to the best of my belief.  Date of Survey: 06/21/2017 Signature and Seal of Professional Surveyor: <i>Michael B. Brown</i> Certificate Number: 18329</p>
---	---	--	--	--





## LEGAL NOTICE

**To:** Alan Jochimsen, his heirs and devisees; Becky Welch Kitt, her heirs and devisees; Bessie L. Whelan, her heirs and devisees; Bettianne Hinkle Bowen, her heirs and devisees; Betty E. Waldenville, her heirs and devisees; Braille Institute of America, Inc.; Bryan W. Welch, his heirs and devisees; Carolyn Holmstrom, Trustee of the John A. Holmstrom 2004 Trust; Carolyn Sandner, her heirs and devisees; Catherine Coll, Trustee of the Testamentary Trust created by Article IV of the Will of Max W. Coll, II; Chalcam Exploration, L.L.C.; Charles E. Hinkle, his heirs and devisees; Charlotte Forehand Albright, her heirs and devisees; Cherie Elaine Louise Bryant, her heirs and devisees; Clarke C. Coll, his heirs and devisees; Claudia Carlson, her heirs and devisees; COG Operating LLC; Concho Oil & Gas LLC; Cynthia Hinkle, Trustee for herself, Kristin Hinkle, and Jenna Hinkle Diamond Lil Properties LLC; Diamond Lil Properties LLC; Dorothy Stuckey, her heirs and devisees; Earl Ray Forehand and Mary Lynn Forehand, As Joint Tenants, their heirs and devisees; Emma Margarette West, her heirs and devisees; EOG Resources Assets LLC; Eric J. Coll, his heirs and devisees; Erin L. Cofrin Revocable Trust; Estate of Fred W. Stebbins, his heirs and devisees; Farmer's National Trust Company, Trustee of the Bessie L. Whelan Trust; Heirs or Devisees of Emma Margarette West; Heirs or Devisees of John H. Bryant; Heirs or Devisees of Selma E. Andrews; High Plains Children's Home and Family Services; Hunt Oil Company; James Gray Welch, his heirs and devisees; James Lisle Hinkle, his heirs and devisees; Jean Wallace, her heirs and devisees; John A. Yates, Trustee of Trust Q u/w/o Peggy A. Yates, deceased; John H. Bryant, his heirs and devisees; John T. Hinkle, his heirs and devisees; John T. Hinkle and Linda J. Hinkle, Trustees under the Hinkle Living Trust dated January 9, 1996; Jon F. Coll, II, his heirs and devisees; Katherine Fletcher c/o Mrs. Martha Hunter, her heirs and devisees; Lillian A. Coll, her heirs and devisees; Lillie E. Hinkle, her heirs and devisees; LML, LLC; Lynn S. Allensworth, her heirs and devisees; Margaret H. Eccleston, Trustee of the Margaret Eccleston Trust under Agreement dated August 12, 1992; Marguerite Coe, her heirs and devisees; Marian Welch Pendergrass, her heirs and devisees; Mark Pate and Elizabeth A. Pate, as Joint Tenants, their heirs and devisees; Marsha S. Melton, her heirs and devisees; Marshall & Winston, Inc.; Marshall & Winston, Inc. James T. Wyman and William S. Marshall, as Co-Trustees of the trust established under the Will of Samuel H. Marshall; Mary Lynn Moody, her heirs and devisees; Max W. Coll, III, his heirs and devisees; McQuiddy Communications & Energy, Inc.; Melanie Coll DeTemple, her heirs and devisees; Michael Irwin Welch, his heirs and devisees; Michael S. Richardson, his heirs and devisees; Monty D. McLane, his heirs and devisees; MRC Delaware Resources, LLC; MRC Permian Company; Pamela J. Burke, as Trustee of the Claire Ann Iverson Revocable Living Trust UTA dated November 22, 2005; Pamela J. Burke, as Trustee of the P.I.P. 1990 Trust; Pamela J. Burke, as Trustee of the Siegfried James Iverson, III Revocable Living Trust UTA dated November 18, 2005; Paul



**Pate, his heirs and devisees; Pauline Bryant, her heirs and devisees; PetroYates, Inc.; Phoebe J. Welch, Trustee of the Phoebe J. Welch Trust dated July 27, 2006; Phoebe Jane Welch IV, her heirs and devisees; R. R. Hinkle Company, Inc.; Rita Lea Spencer, her heirs and devisees; Robert Welch Gillespie, his heirs and devisees; Rolla R. Hinkle III, his heirs and devisees; Ruth Canon, her heirs and devisees; Sabine Royalty Corporation; Samuel H. Marshall, Jr. and William S. Marshall, Co-Trustees of the Testamentary Trust created U/W/O Samuel H. Marshall, deceased; Santa Barbara Center of the Braille Institute of America, Inc.; Santo Legado LLC; Sarah Elizabeth Garner, her heirs and devisees; Saunders Thomas Welch, his heirs and devisees; Selma E. Andrews, her heirs and devisees; Sharbro Energy LLC; Spiral Inc.; Spirit Trail LLC; Stacy Welch Green, her heirs and devisees; States Royalty Limited Partnership; Sue F. Bennett, her heirs and devisees; Susan Hendricks, her heirs and devisees; T.I.G. Properties; The Central Church of Christ; The Wana Louise Hill Revocable Trust dated November 15, 1999; Tierra Oil Company; Van P. Welch, his heirs and devisees; Van S. Welch II, his heirs and devisees; Wendell Terry Welch, his heirs and devisees; Westview Boy's Home, Inc.; William Joe Snipes, his heirs and devisees; Yates Energy Corporation; and any unknown person who has a mineral interest in the S/2 S/2 of Section 19, the N/2 S/2 of Section 20, and the S/2 S/2 of Section 20, Township 20 South, Range 29 East, NMPM, Eddy County, New Mexico.**

Application of Matador Production Company for administrative approval for off-lease measurement and approval to surface commingle (lease commingle) oil and gas production from *all existing and future wells* within the spacing units comprised of the S/2 S/2 of Section 19, the N/2 S/2 of Section 20, and the S/2 S/2 of Section 20, Township 20 South, Range 29 East, NMPM, Eddy County, New Mexico. Pursuant to 19.15.12.10(C)(4)(g), Matador also seeks authority to commingle gas production into the Longwood Gathering Line from future leases with notice provided only to interest owners within future leases. Matador seeks approval to surface commingle production from the WC-015 G-04 S202920D, Bone Spring Pool (98015)) for all existing and future wells at a surface facility located in the SW/4 SW (Unit M) of Section 20. Any objection to this application must be filed in writing within twenty (20) days from date of publication with the applicant and the New Mexico Oil Conservation Division, 1220 South St. Francis Drive, Santa Fe, New Mexico, 87505. If no objection is received within this twenty-day period, this application may be approved administratively by the Division. If you have any questions about this application, please contact Sherri Gore, 5400 LBJ Freeway, Suite 1500, Dallas, TX 75240, (972) 371-5467, [sgore@matadorresources.com](mailto:sgore@matadorresources.com).



**STEBBINS 19 FED #124H & STEBBINS 20 FED #123H – INTEREST OWNERS (EXHIBIT-6)**

Alan Jochimsen  
4209 Cardinal Lane  
Midland, Texas 79707  
7016301000055806341

Becky Welch Kitto  
2702 N. Flanwill  
Tucson, AZ 85716  
7016301000055806334

Bessie L. Whelan  
3805 Mackland Northeast  
Albuquerque, NM 87110  
70163010000055806310

Bettianne Hinkle Bowen  
1902 Ivanhoe Lane  
Abilene, TX 79605  
70163010000055806327

Betty E. Waldenville  
1610 Village Drive  
Norman Oklahoma 73071  
70163010000055806211

Braille Institute of America, Inc.  
P.O. Box 840738  
Dallas, TX 75284  
70163010000055806228

Bryan W. Welch  
1764 S. Paige Creek Place  
Tucson, AZ 85748  
70163010000055806235

Carolyn Holmstrom, Trustee of the  
John A. Holmstrom 2004 Trust  
2925 Somerset Place  
San Marino, California 91108  
70163010000055806242

Carolyn Sandner  
37A-130  
Vienna Austria OH 43 1876  
To be supplied

Catherine Coll, Trustee of the  
Testamentary Trust created by  
Article IV of the Will of Max W.  
Coll, II  
Unknown

Chalcam Exploration, L.L.C.  
200 West First, Suite 434  
Roswell, New Mexico 88201  
70163010000055806266

Charles E. Hinkle  
Lonoak Route, Box 4  
King City, Ca 93930  
70163010000055806273

Charlotte Forehand Albright  
1705 Boyd Drive  
Carlsbad, New Mexico 88220  
70163010000055806280

Cherie Elaine Louise Bryant  
Unknown

Clarke C. Coll  
Unknown

Claudia Carlson  
1610 Evette Court  
Merced, California 95430  
70163010000055806297

COG Operating LLC  
550 West Texas Ave., Ste 100  
Midland, Texas 79701  
70163010000055806303

Concho Oil & Gas LLC  
550 West Texas Ave., Ste 100  
Midland, Texas 79701  
70163010000055806112

Cynthia Hinkle, Trustee for herself,  
Kristin Hinkle, and Jenna Hinkle  
Diamond Lil Properties LLC  
RR3, Box 519  
Carmel, Ca 93923  
70163010000055806129

Diamond Lil Properties LLC  
Unknown

Dorothy Stuckey  
1721 Windchime  
Norman, Oklahoma 73071  
70163010000055806136

Earl Ray Forehand and Mary  
Lynn Forehand, As Joint Tenants  
112 East Cherry Lane  
Carlsbad, New Mexico 88220  
70163010000055806143

Emma Margarette West  
927 South Oak Street  
Inglewood, California 90301  
70163010000055806150

EOG Resources Assets LLC  
1111 Bagby, Sky Lobby 2  
Houston, TX 77002  
70163010000055806167

Eric J. Coll  
Unknown

Erin L. Cofrin Revocable Trust  
43 Camino Arroyo Place  
Palm Desert, CA 92260  
70163010000055806174

Estate of Fred W. Stebbins  
Unknown

Farmer's National Trust Company,  
Trustee of the Bessie L. Whelan  
Trust  
5110 S. Yale Ave., Suite 400  
Tulsa, OK 74135  
70163010000055806181

Heirs or Devisees of Emma  
Margarette West  
Unknown

Heirs or Devisees of John H.  
Bryant  
Unknown





**STEBBINS 19 FED #124H & STEBBINS 20 FED #123H – INTEREST OWNERS (EXHIBIT-6)**

Heirs or Devises of Selma E.  
Andrews  
Unknown

High Plains Children's Home and  
Family Services  
P.O. Box 7448  
Amarillo, TX 79114  
70163010000055806198

Hunt Oil Company  
1900 North Akard St  
Dallas, TX 75201  
70163010000055806204

James Gray Welch  
9307 Sam Rayburn Court  
Cypress, TX 77422  
70163010000055806013

James Lisle Hinkle  
P.O. Box 2002  
Roswell, NM 88202  
70163010000055806020

Jean Wallace  
1709 Missouri  
Joplin, Missouri 64804  
70163010000055806037

John A. Yates, Trustee of Trust Q  
u/w/o Peggy A. Yates, deceased  
105 S. 4th Street  
Artesia, NM 87201  
70163010000055806044

John H. Bryant  
Unknown

John T. Hinkle  
P.O. BOX 1793  
Roswell, NM 88202  
70163010000055806051

John T. Hinkle and Linda J.  
Hinkle, Trustees under the Hinkle  
Living Trust dated January 9,  
1996  
Unknown

Jon F. Coll, II  
P O Box 1818  
Roswell, Nm 88201  
70163010000055806068

Katherine Fletcher c/o Mrs.  
Martha Hunter  
1610 Evette Court  
Merced, California 95430  
70163010000055806075

Lillian A. Coll  
Unknown

Lillie E. Hinkle  
Unknown

LML, LLC  
Unknown

Lynn S. Allensworth  
Unknown

Margaret H. Eccleston, Trustee of  
the Margaret Eccleston Trust  
under Agreement dated August  
12, 1992  
Unknown

Marguerite Coe  
872 Bettina Court #463  
Houston, TX 77024  
70163010000055806082

Marian Welch Pendergrass  
2705 Gaye Drive  
Roswell, NM 88201  
70163010000055806099

Mark Pate and Elizabeth A. Pate,  
as Joint Tenants  
Unknown

Marsha S. Melton  
4490 N Moss  
Odessa, TX 77024  
70163010000055806105

Marshall & Winston, Inc.  
P.O. Box 50880  
Midland, TX 79710  
70163010000055805917

Marshall & Winston, Inc. James T.  
Wyman and William S. Marshall, as  
Co-Trustees of the trust established  
under the Will of Samuel H.  
Marshall  
Unknown

Mary Lynn Moody  
Unknown

Max W. Coll, III  
Unknown

McQuiddy Communications &  
Energy, Inc.  
P O Box 2072  
Roswell, NM 88202  
70163010000055805924

Melanie Coll DeTemple  
Unknown

Michael Irwin Welch  
3501 146th Street  
Lubbock, TX 79423  
70163010000055805931

Michael S. Richardson  
Unknown

Monty D. McLane  
P.O. Box 9451  
Midland, Texas 79708  
70163010000055805948

## STEBBINS 19 FED #124H & STEBBINS 20 FED #123H – INTEREST OWNERS (EXHIBIT-6)

MRC Delaware Resources, LLC  
5400 LBJ Freeway, Suite 1500  
Dallas, Texas 75240  
70163010000055805955

Pamela J. Burke, as Trustee of the  
P.I.P. 1990 Trust  
P.O. Box 10508  
Midland, TX 79702  
70163010000055805986

Pauline Bryant  
525 W. Davis Road  
Weatherford, Oklahoma 73096  
70163010000055806006

Phoebe Jane Welch IV  
1867 Karas Court  
Concord, CA 94521  
70163010000055805832

Robert Welch Gillespie  
186 Sierra View  
Pasadena, CA 91105  
70163010000055805856

Sabine Royalty Corporation  
Unknown

Santo Legado LLC  
P.O. Box 1020  
Artesia, NM 88211  
70163010000055805894

Selma E. Andrews  
Unknown

Spirit Trail LLC  
Unknown

Sue F. Bennett  
419 Chesapeake Drive  
Great Falls, VA 22066  
70163010000055805764

MRC Permian Company  
5400 LBJ Freeway, Ste 1500  
Dallas, TX 75240  
70163010000055805962

Pamela J. Burke, as Trustee of the  
Siegfried James Iverson, III Revocable  
Living Trust UTA dated November 18,  
2005  
P.O. Box 10508  
Midland, TX 79702  
70163010000055805993

PetroYates, Inc.  
P.O. Box 484  
Albuquerque, NM 87103  
70163010000055805818

R. R. Hinkle Company, Inc.  
Unknown

Rolla R. Hinkle III  
P.O. Box 59  
Roswell, NM 88202  
70163010000055805863

Samuel H. Marshall, Jr. and William S.  
Marshall, Co-Trustees of the  
Testamentary Trust created U/W/O  
Samuel H. Marshall, deceased  
P.O. Box 4482  
Topeka, KS 66604  
70163010000055805887

Sarah Elizabeth Garner  
1618 Paducah Street  
Los Angeles, California 90035  
70163010000055805900

Sharbro Energy LLC  
P.O. Box 840  
Artesia, NM 88211  
70163010000055805726

Stacy Welch Green  
P.O. Box 164  
Sonoita, AZ 85637  
70163010000055805740

Susan Hendricks  
482 Walker #4  
Ashland, Oregon 97520  
70163010000055805771

Pamela J. Burke, as Trustee of the Claire  
Ann Iverson Revocable Living Trust  
UTA dated November 22, 2005  
P.O. Box 10508  
Midland, TX 79702  
70163010000055805979

Paul Pate  
Unknown

Phoebe J. Welch, Trustee of the  
Phoebe J. Welch Trust dated July 27,  
2006  
20350 Marsh Creek Road  
Brentwood, CA 94513  
70163010000055805825

Rita Lea Spencer  
6436 Nicklas  
Oklahoma City, Oklahoma 73132  
70163010000055805849

Ruth Canon  
9403 Winding Ridge  
Dallas, Texas 75238  
70163010000055805870

Santa Barbara Center of the  
Braille Institute of America, Inc.  
Unknown

Saunders Thomas Welch  
419 N. Broadway  
Truth or Consequences, NM  
87901  
70163010000055805719

Spiral Inc.  
P.O. Box 1933  
Roswell, New Mexico 88202  
70163010000055805733

States Royalty Limited  
Partnership  
P.O. Box 911  
Breckenridge, Texas 76424  
70163010000055805757

T.I.G. Properties  
P.O. Box 10508  
Midland, TX 79702  
70163010000055805788

**STEBBINS 19 FED #124H & STEBBINS 20 FED #123H – INTEREST OWNERS (EXHIBIT-6)**

The Central Church of Christ  
Unknown

The Wana Louise Hill Revocable  
Trust dated November 15, 1999  
Unknown

Tierra Oil Company  
P.O. Box 700968  
San Antonio, Texas 78270  
70163010000055805795

Van P. Welch  
2601 Sunrise Road  
Walsenburg, CO 81089  
70163010000055805801

Van S. Welch II  
2901 Wildwood Place  
Duncan, OK 73533  
70163010000055806259

Wendell Terry Welch  
P.O. Box 8418  
Nikiski, AK 99635  
701630100000558062596389

Westview Boy's Home, Inc.  
Unknown

William Joe Snipes  
RR 4, 2305 East Pine Lodge Rd  
Roswell, NM 88201  
701630100000558062596372



UNITED STATES  
DEPARTMENT OF THE INTERIOR  
BUREAU OF LAND MANAGEMENT

FORM APPROVED  
OMB NO. 1004-0137  
Expires: January 31, 2018

**SUNDRY NOTICES AND REPORTS ON WELLS**  
*Do not use this form for proposals to drill or to re-enter an abandoned well. Use form 3160-3 (APD) for such proposals.*

**SUBMIT IN TRIPLICATE - Other instructions on page 2**

1. Type of Well <input checked="" type="checkbox"/> Oil Well <input type="checkbox"/> Gas Well <input type="checkbox"/> Other		5. Lease Serial No. NMNM03677
2. Name of Operator MATADOR PRODUCTION COMPANYE-Mail: tlink@matadorresources.com		6. If Indian, Allottee or Tribe Name
3a. Address ONE LINCOLN CENTER 5400 LBJ FREEWAY SUITE 1500 DALLAS, TX 75240		7. If Unit or CA/Agreement, Name and/or No.
3b. Phone No. (include area code) 500 575-627-2465		8. Well Name and No. STEBBINS 19 FED 124H
4. Location of Well (Footage, Sec., T., R., M., or Survey Description) Sec 19 T20S R29E SESE 180FSL 110FEL 32.552095 N Lat, 104.105633 W Lon		9. API Well No. 30-015-44172-00-X1
		10. Field and Pool or Exploratory Area WC015G04S202920D-BONE SPRING
		11. County or Parish, State EDDY COUNTY, NM

**12. CHECK THE APPROPRIATE BOX(ES) TO INDICATE NATURE OF NOTICE, REPORT, OR OTHER DATA**

TYPE OF SUBMISSION	TYPE OF ACTION			
<input checked="" type="checkbox"/> Notice of Intent	<input type="checkbox"/> Acidize	<input type="checkbox"/> Deepen	<input type="checkbox"/> Production (Start/Resume)	<input type="checkbox"/> Water Shut-Off
<input type="checkbox"/> Subsequent Report	<input type="checkbox"/> Alter Casing	<input type="checkbox"/> Hydraulic Fracturing	<input type="checkbox"/> Reclamation	<input type="checkbox"/> Well Integrity
<input type="checkbox"/> Final Abandonment Notice	<input type="checkbox"/> Casing Repair	<input type="checkbox"/> New Construction	<input type="checkbox"/> Recomplete	<input checked="" type="checkbox"/> Other
	<input type="checkbox"/> Change Plans	<input type="checkbox"/> Plug and Abandon	<input type="checkbox"/> Temporarily Abandon	
	<input type="checkbox"/> Convert to Injection	<input type="checkbox"/> Plug Back	<input type="checkbox"/> Water Disposal	

13. Describe Proposed or Completed Operation: Clearly state all pertinent details, including estimated starting date of any proposed work and approximate duration thereof. If the proposal is to deepen directionally or recompleat horizontally, give subsurface locations and measured and true vertical depths of all pertinent markers and zones. Attach the Bond under which the work will be performed or provide the Bond No. on file with BLM/BIA. Required subsequent reports must be filed within 30 days following completion of the involved operations. If the operation results in a multiple completion or recompleat in a new interval, a Form 3160-4 must be filed once testing has been completed. Final Abandonment Notices must be filed only after all requirements, including reclamation, have been completed and the operator has determined that the site is ready for final inspection.

BLM Bond No. NMB0001079  
Surety Bond No. RLB0015172

Please note: Change of Pool to WC-015 G-04 S202920D; Bone Spring (code 98015).

See attached C-102.

14. I hereby certify that the foregoing is true and correct. <b>Electronic Submission #399606 verified by the BLM Well Information System For MATADOR PRODUCTION COMPANY, sent to the Carlsbad Committed to AFMSS for processing by JENNIFER SANCHEZ on 01/04/2018 (18JAS0652SE)</b>	
Name (Printed/Typed) TAMMY R LINK	Title PRODUCTION ANALYST
Signature (Electronic Submission)	Date 01/04/2018

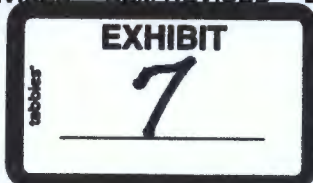
**THIS SPACE FOR FEDERAL OR STATE OFFICE USE**

Approved By <b>ACCEPTED</b>	(BLM Approver Not Specified)	Date 01/08/2018
Conditions of approval, if any, are attached. Approval of this notice does not warrant or certify that the applicant holds legal or equitable title to those rights in the subject lease which would entitle the applicant to conduct operations thereon.		Office Carlsbad

Title 18 U.S.C. Section 1001 and Title 43 U.S.C. Section 1212, make it a crime for any person knowingly and willfully to make to any department or agency of the United States any false, fictitious or fraudulent statements or representations as to any matter within its jurisdiction.

(Instructions on page 2)

**\*\* BLM REVISED \*\* BLM REVISED \*\* BLM REVISED \*\* BLM REVISED \*\* BLM REVISED \*\***





UNITED STATES  
DEPARTMENT OF THE INTERIOR  
BUREAU OF LAND MANAGEMENTFORM APPROVED  
OMB NO. 1004-0137  
Expires: January 31, 2018**SUNDRY NOTICES AND REPORTS ON WELLS**  
*Do not use this form for proposals to drill or to re-enter an abandoned well. Use form 3160-3 (APD) for such proposals.*5. Lease Serial No.  
NMNM03677

6. If Indian, Allottee or Tribe Name

7. If Unit or CA/Agreement, Name and/or No.

**SUBMIT IN TRIPLICATE - Other instructions on page 2**

1. Type of Well

☒ Oil Well ☐ Gas Well ☐ Other

8. Well Name and No.

STEBBINS 20 FEDERAL 123H

2. Name of Operator

MATADOR PRODUCTION COMPANY

Contact: TAMMY R LINK

E-Mail: tlink@matadorresources.com

9. API Well No.

30-015-43201-00-S1

3a. Address

ONE LINCOLN CENTER 5400 LBJ FREEWAY SUITE 1500  
DALLAS, TX 75240

3b. Phone No. (include area code)

1500 575-627-2465

10. Field and Pool or Exploratory Area

WC015G04S202920D-BONE SPRING

4. Location of Well (Footage, Sec., T., R., M., or Survey Description)

Sec 20 T20S R29E NWSW 1693FSL 130FWL  
32.557783 N Lat, 104.105116 W Lon

11. County or Parish, State

EDDY COUNTY, NM

**12. CHECK THE APPROPRIATE BOX(ES) TO INDICATE NATURE OF NOTICE, REPORT, OR OTHER DATA**

## TYPE OF SUBMISSION

## TYPE OF ACTION

☒ Notice of Intent☐ Subsequent Report☐ Final Abandonment Notice☐ Acidize☐ Alter Casing☐ Casing Repair☐ Change Plans☐ Convert to Injection☐ Deepen☐ Hydraulic Fracturing☐ New Construction☐ Plug and Abandon☐ Plug Back☐ Production (Start/Resume)☐ Reclamation☐ Recomplete☐ Temporarily Abandon☐ Water Disposal☐ Water Shut-Off☐ Well Integrity☒ Other

13. Describe Proposed or Completed Operation: Clearly state all pertinent details, including estimated starting date of any proposed work and approximate duration thereof. If the proposal is to deepen directionally or recompleat horizontally, give subsurface locations and measured and true vertical depths of all pertinent markers and zones. Attach the Bond under which the work will be performed or provide the Bond No. on file with BLM/BIA. Required subsequent reports must be filed within 30 days following completion of the involved operations. If the operation results in a multiple completion or recompleat in a new interval, a Form 3160-4 must be filed once testing has been completed. Final Abandonment Notices must be filed only after all requirements, including reclamation, have been completed and the operator has determined that the site is ready for final inspection.

BLM Bond No. NMB0001079  
Surety Bond No. RLB0015172Please note: Change of Pool to WC-015 G-04 S202920D; Bone Spring (code 98015)  
See attached C-102.

14. I hereby certify that the foregoing is true and correct.

Electronic Submission #399517 verified by the BLM Well Information System  
For MATADOR PRODUCTION COMPANY, sent to the Carlsbad  
Committed to AFMSS for processing by JENNIFER SANCHEZ on 01/04/2018 (18JAS0641SE)

Name (Printed/Typed) TAMMY R LINK

Title PRODUCTION ANALYST

Signature (Electronic Submission)

Date 01/03/2018

**THIS SPACE FOR FEDERAL OR STATE OFFICE USE**

Approved By

**ACCEPTED**

(BLM Approver Not Specified)

Title

Date 01/08/2018

Conditions of approval, if any, are attached. Approval of this notice does not warrant or certify that the applicant holds legal or equitable title to those rights in the subject lease which would entitle the applicant to conduct operations thereon.

Office Carlsbad

Title 18 U.S.C. Section 1001 and Title 43 U.S.C. Section 1212, make it a crime for any person knowingly and willfully to make to any department or agency of the United States any false, fictitious or fraudulent statements or representations as to any matter within its jurisdiction.

(Instructions on page 2)

**\*\* BLM REVISED \*\* BLM REVISED \*\* BLM REVISED \*\* BLM REVISED \*\* BLM REVISED \*\***





January 18, 2018

**CERTIFIED MAIL**  
**RETURN RECEIPT REQUESTED****TO: ALL AFFECTED PARTIES****Re: Application of Matador Production Company for administrative approval for off-lease storage and measurement and approval to surface commingle (lease commingle) production from the spacing units comprised of the S/2 S/2 of Section 19, the N/2 S/2 of Section 20, and the S/2 S/2 of Section 20, Township 20 South, Range 29 East, NMPM, Eddy County, New Mexico.**

Ladies and Gentlemen:

Enclosed is a copy of the above-referenced application which was filed with the New Mexico Oil Conservation Division on this date. Any objection to this application must be filed in writing within twenty days from this date at the Division's Santa Fe office located at 1220 South St. Francis Drive, Santa Fe, New Mexico, 87505. If no objection is received within this twenty-day period, this application may be approved administratively by the Division.

If you have any questions about this application, please contact the following:

Sherri Gore  
Matador Production Company  
972-371-5467  
SGore@matadorresources.com

Sincerely,

Jordan L. Kessler  
**ATTORNEY FOR**  
**MATADOR PRODUCTION COMPANY**

BLM Field Office: Carlsbad

**BUREAU OF LAND MANAGEMENT  
STATUS OF PUBLIC DOMAIN  
LAND AND MINERALS**

**OG Plat**

T20S R29E

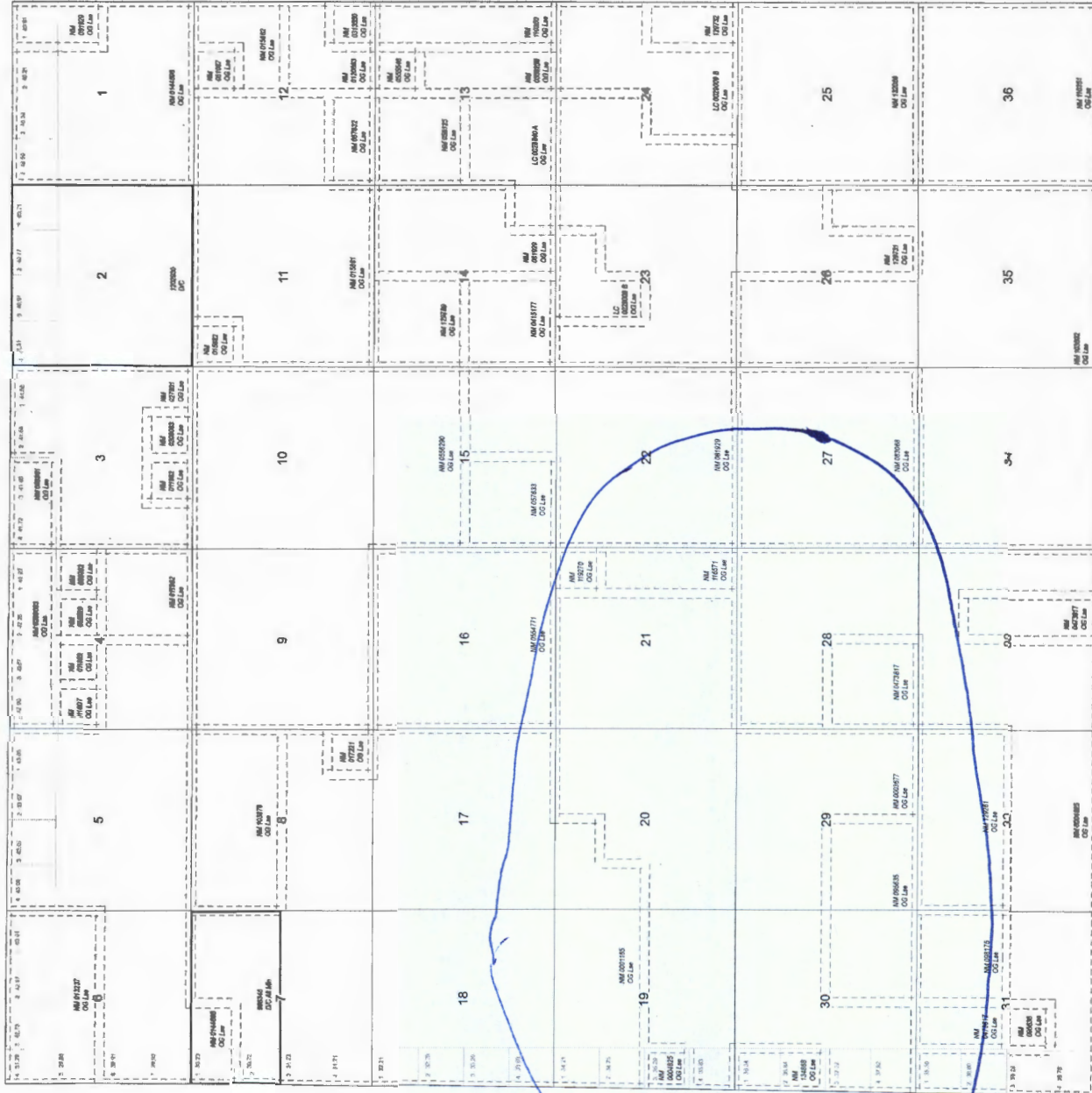
Entity Township included in  
NM 073534, (Cf Vol NM 1 Pct Two 6 (1/17/1926))

Designated Port Area SO 3037/1975 (Partial)  
Cf of Public Lands NM 0656022 (Cf Two 30-06-01)

PLO 1400 Open to Insurance of Potash Leases

UNITIZATION AGREEMENT  
Pitkin County, Colorado  
NM 046933X

COMMUNITIZATION AGREEMENT  
NM 072026  
NM 072085  
NM 072865  
NM 072888  
NM 082042  
NM 083529  
NM 084637  
NM 083046  
NM 083047  
NM 103349  
NM 103773  
NM 104028  
NM 105978  
NM 107762  
NM 107925  
NM 112717  
NM 126509  
NM 128254  
NM 132739  
NM 133020  
NM 135006  
NM 131446  
NM 134247  
NM 133019  
NM 133020  
NM 133021  
NM 136609

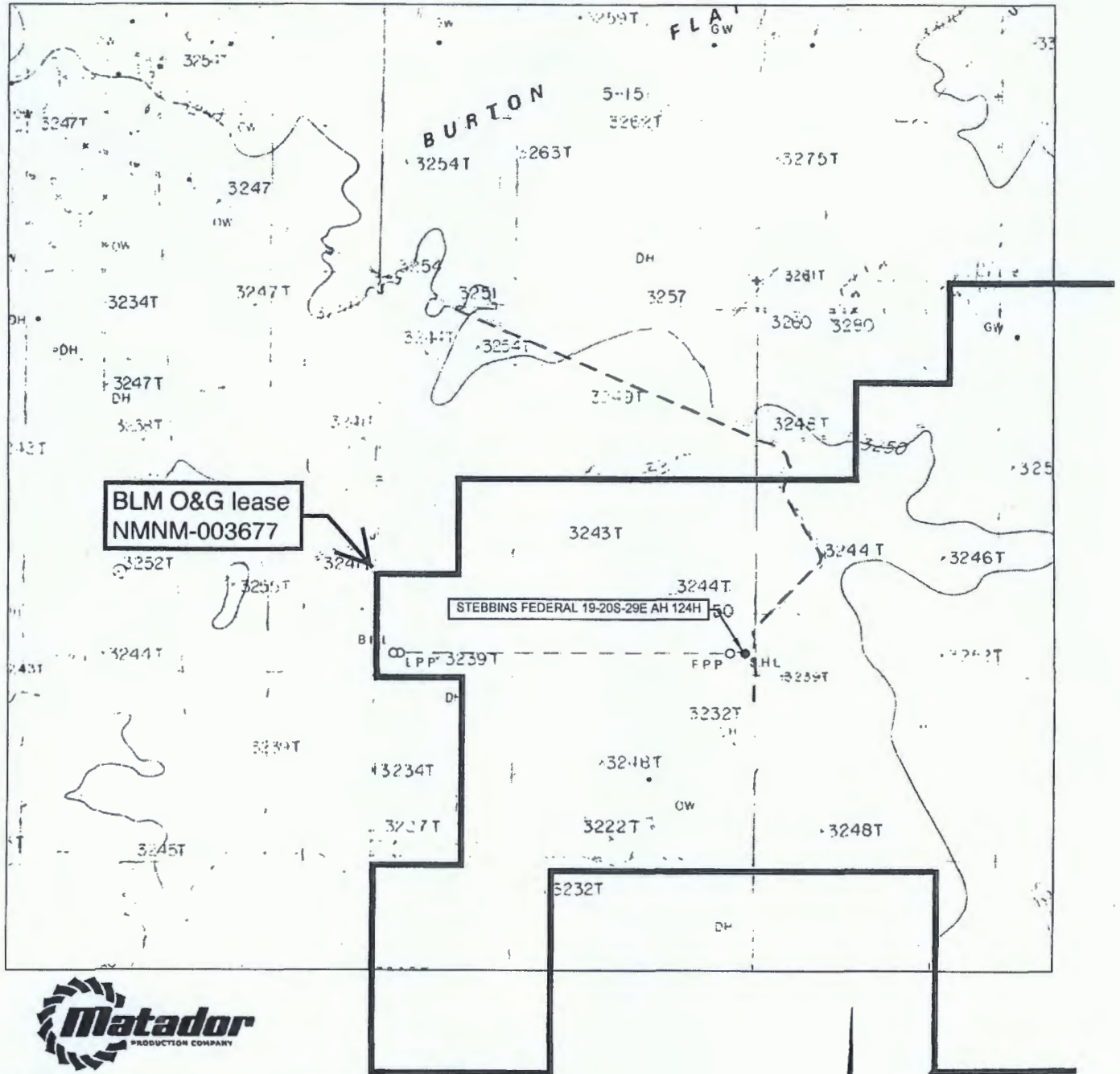


0 0.25 0.5 1 Mile  
1 inch = 30 chains  
1:23,760

T 20S  
R 28E  
NMSPM



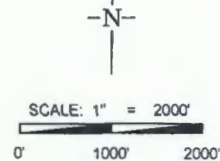
# LOCATION & ELEVATION VERIFICATION MAP



LEASE NAME & WELL NO.: STEBBINS FEDERAL 19-20S-29E AH #124H

SECTION 19 TWP 20-S RGE 29-E SURVEY N.M.P.M.  
 COUNTY EDDY STATE NM ELEVATION 3242'  
 DESCRIPTION 360' FSL & 130' FEL

LATITUDE N 32.5525904 LONGITUDE W 104.10569868



THIS EASEMENT/SERVITUDE LOCATION SHOWN HEREON HAS BEEN SURVEYED ON THE GROUND UNDER MY SUPERVISION AND PREPARED ACCORDING TO THE EVIDENCE FOUND AT THE TIME OF SURVEY, AND DATA PROVIDED BY MATADOR PRODUCTION COMPANY. THIS CERTIFICATION IS MADE AND LIMITED TO THOSE PERSONS OR ENTITIES SHOWN ON THE FACE OF THIS PLAT AND IS NON-TRANSFERABLE. THIS SURVEY IS CERTIFIED FOR THIS TRANSACTION ONLY.

ALL BEARINGS, DISTANCES, AND COORDINATE VALUES CONTAINED HEREON ARE GRID BASED UPON THE NEW MEXICO STATE PLANE COORDINATE SYSTEM, EAST ZONE OF THE NORTH AMERICAN DATUM 1927, U.S. SURVEY FEET.



**TOPOGRAPHIC**  
 LOYALTY INNOVATION LEGACY

1400 EVERMAN PARKWAY, Ste. 197 • FT. WORTH, TEXAS 76140  
 TELEPHONE: (817) 744-7512 • FAX (817) 744-7548  
 2903 NORTH BIG SPRING • MIDLAND, TEXAS 79705  
 TELEPHONE: (432) 682-1653 OR (800) 767-1653 • FAX (432) 682-1743  
 WWW.TOPOGRAPHIC.COM