

RECEIVED: Y02/2018	REVIEWER:	TYPE: SWD	APP NO: PMAM1900257915
------------------------------	-----------	---------------------	----------------------------------

ABOVE THIS TABLE FOR OCD DIVISION USE ONLY

NEW MEXICO OIL CONSERVATION DIVISION
 - Geological & Engineering Bureau -
 1220 South St. Francis Drive, Santa Fe, NM 87505



ADMINISTRATIVE APPLICATION CHECKLIST

THIS CHECKLIST IS MANDATORY FOR ALL ADMINISTRATIVE APPLICATIONS FOR EXCEPTIONS TO DIVISION RULES AND REGULATIONS WHICH REQUIRE PROCESSING AT THE DIVISION LEVEL IN SANTA FE

Applicant: Pogo Oil & Gas Operating, Inc	OGRID Number: 37200
Well Name: State BD SWD #4	API: 30-025-35662
Pool: SWD; Devonian	Pool Code: 96101

SUBMIT ACCURATE AND COMPLETE INFORMATION REQUIRED TO PROCESS THE TYPE OF APPLICATION INDICATED BELOW

SWD-1714

- 1) **TYPE OF APPLICATION:** Check those which apply for [A]
- A. Location - Spacing Unit - Simultaneous Dedication
 NSL NSP (PROJECT AREA) NSP (PERFORATION UNIT) SD
- B. Check one only for [I] or [II]
- [I] Commingling - Storage - Measurement
 DHC CTB PLC PC OLS OLM
- [II] Injection - Disposal - Pressure Increase - Enhanced Oil Recovery
 WFX PMX SWD IPI EOR PPR

FOR OCD ONLY	
<input type="checkbox"/>	Notice Complete
<input type="checkbox"/>	Application Content Complete

- 2) **NOTIFICATION REQUIRED TO:** Check those which apply.
- A. Offset operators or lease holders
 B. Royalty, overriding royalty owners, revenue owners
 C. Application requires published notice
 D. Notification and/or concurrent approval by SLO
 E. Notification and/or concurrent approval by BLM
 F. Surface owner
 G. For all of the above, proof of notification or publication is attached, and/or,
 H. No notice required

3) **CERTIFICATION:** I hereby certify that the information submitted with this application for administrative approval is **accurate** and **complete** to the best of my knowledge. I also understand that **no action** will be taken on this application until the required information and notifications are submitted to the Division.

Note: Statement must be completed by an individual with managerial and/or supervisory capacity.

M. Y. (Merch) Merchant _____

Print or Type Name

[Signature]

Signature

12/1/17
Date

575-492-1240
Phone Number

mymerch@penrocoil.com
e-mail Address

Holcomb Consultants
6900 Spring Cherry Lane
Amarillo, Texas 79124

RECEIVED OGD

2018 JAN -2 P 3: 54

December 29, 2017

New Mexico Oil Conservation Division
Engineering Bureau
1220 South St. Francis Drive
Santa Fe, New Mexico 87505

Re: Original Affidavit of Publication
C-108 Application from Pogo Oil & Gas Operating, Inc
State BD SWD #4 (30-025-35662)

Gentlemen,

Attached is the original AOP received from the Lovington Leader for the legal notice publication made on December 2, 2017 as part of the C-108 application (Authority to Inject) on the above referenced well.

If you have any questions concerning this notice or need any additional information, please let me know.

Sincerely,



Danny J. Holcomb
Agent for Pogo Oil & Gas Operating, Inc
Email: danny@pwillc.net
Cell: 806-471-5628

Attachment

Holcomb Consultants
6900 Spring Cherry Lane
Amarillo, Texas 79124

December 29, 2017

State of New Mexico
NMOCD Engineering Bureau
1220 South St. Francis Drive
Santa Fe, New Mexico 87505

Per the rules and regulations of the New Mexico Oil Conservation Division, please find enclosed a copy of NMOCD form C-108. Pogo Oil & Gas Operating, Inc, 1515 Calle Sur, Suite 174, Hobbs, NM 88240 has filed form C-108 (Application for Authorization to Inject) with the New Mexico Oil Conservation Division seeking administrative approval to convert the State BD #4, API 30-025-35662, 1894 FNL x 604 FEL, Unit Letter "H", Section 2, T12S, R33E, Lea County, New Mexico from a temporary abandoned well to a salt water disposal well. The proposed disposal interval would be the Devonian formation through a combination of cased hole perforations and open hole between 11,000' – 11,500'. Disposal fluid would be produced water from Pogo producing oil and gas wells in the area. Anticipated disposal rate would be 8000 BWPD with a maximum rate of 12,000 BWPD. Anticipated disposal pressure would be 400 psi with a maximum disposal pressure of 2200 psi. The well is located approximately 15 miles west-north-west of Tatum, New Mexico.

*Operator
Case
Only*

All interested parties opposing the aforementioned must file objections with the New Mexico Oil Conservation Division, 1220 South St. Francis Drive, Santa Fe, New Mexico 87505 within 15 days. Additional information can be obtained by contacting Danny Holcomb at 806-471-5628.

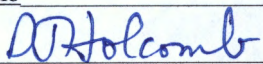
Sincerely,



Danny J. Holcomb
Agent for Pogo Oil & Gas Operating, Inc
Email: danny@pwillc.net

Attachment

APPLICATION FOR AUTHORIZATION TO INJECT

- I. PURPOSE: _____ Secondary Recovery _____ Pressure Maintenance Disposal _____ Storage
Application qualifies for administrative approval? Yes _____ No
- II. OPERATOR: Pogo Oil & Gas Operating, Inc OGRID 37200
ADDRESS: 1515 Calle Sur, Suite 174, Hobbs, New Mexico 88240
CONTACT PARTY: M. Y. (Merch) Merchant PHONE: 575-492-1240
- III. WELL DATA: Complete the data required on the reverse side of this form for each well proposed for injection.
Additional sheets may be attached if necessary.
- IV. Is this an expansion of an existing project? Yes _____ No
If yes, give the Division order number authorizing the project: AO SWD-831
- V. Attach a map that identifies all wells and leases within two miles of any proposed injection well with a one-half mile radius circle drawn around each proposed injection well. This circle identifies the well's area of review.
- VI. Attach a tabulation of data on all wells of public record within the area of review which penetrate the proposed injection zone. Such data shall include a description of each well's type, construction, date drilled, location, depth, record of completion, and a schematic of any plugged well illustrating all plugging detail.
- VII. Attach data on the proposed operation, including:
1. Proposed average and maximum daily rate and volume of fluids to be injected;
 2. Whether the system is open or closed;
 3. Proposed average and maximum injection pressure;
 4. Sources and an appropriate analysis of injection fluid and compatibility with the receiving formation if other than reinjected produced water; and,
 5. If injection is for disposal purposes into a zone not productive of oil or gas at or within one mile of the proposed well, attach a chemical analysis of the disposal zone formation water (may be measured or inferred from existing literature, studies, nearby wells, etc.).
- *VIII. Attach appropriate geologic data on the injection zone including appropriate lithologic detail, geologic name, thickness, and depth. Give the geologic name, and depth to bottom of all underground sources of drinking water (aquifers containing waters with total dissolved solids concentrations of 10,000 mg/l or less) overlying the proposed injection zone as well as any such sources known to be immediately underlying the injection interval.
- IX. Describe the proposed stimulation program, if any.
- *X. Attach appropriate logging and test data on the well. (If well logs have been filed with the Division, they need not be resubmitted).
- *XI. Attach a chemical analysis of fresh water from two or more fresh water wells (if available and producing) within one mile of any injection or disposal well showing location of wells and dates samples were taken.
- XII. Applicants for disposal wells must make an affirmative statement that they have examined available geologic and engineering data and find no evidence of open faults or any other hydrologic connection between the disposal zone and any underground sources of drinking water.
- XIII. Applicants must complete the "Proof of Notice" section on the reverse side of this form.
- XIV. Certification: I hereby certify that the information submitted with this application is true and correct to the best of my knowledge and belief.
- NAME: Danny J. Holcomb TITLE: Agent
SIGNATURE:  DATE: 12/2/2017
E-MAIL ADDRESS: danny@pwllc.net
- * If the information required under Sections VI, VIII, X, and XI above has been previously submitted, it need not be resubmitted. Please show the date and circumstances of the earlier submittal: _____

Pogo Oil & Gas Operating, Inc
State BD SWD #4
API # 30-025-35662
1894 FNL x 604 FEL
Unit Letter 'H', Section 2, T12S, R33E
Lea County, New Mexico
C108 Application for Authorization to Inject

I.

The purpose of this application is seeking administrative approval for the conversion of the State BD #4 from a temporary abandoned well to a salt water disposal well in the Devonian formation through a combination of cased hole perforations and open hole completion between 11000' – 11500' for Pogo lease produced water use only.

II.

Operator: Pogo Oil & Gas Operating, Inc
Address: 1515 Calle Sur, Suite 174, Hobbs, New Mexico 88240
Contact Party: M. Y. (Merch) Merchant 575-492-1240 email: mymerch@penrocoil.com

III.

Well Name: State BD #4
API Number: 30-025-35662
Location: Unit Letter 'H', Section 2, T12S, R33E, Lea County, New Mexico
Operator: Pogo Oil & Gas Operating, Inc OGRID: 372000
Proposed Formation: SWD; Devonian (Pool Code: 96101)
Please see Exhibit "A" for additional well data.

IV.

This is an expansion of an existing project. Administrative Order SWD-831 authorized injection into the State BD #3 (30-025-01033) in the Devonian formation from 11,000' – 11,400'. Pogo needs increased produced water disposal in this area.

V.

Please see Exhibit "B" for lease map.

VI.

There are twelve offset wells located within the 0.5 mile Area of Review. Seven of these offset wells do not penetrate the proposed disposal interval. Five of these offset wells do penetrate the proposed disposal interval. See AOR map, list of offset wells and offset wellbore diagrams in Exhibit "C".

Pogo Oil & Gas Operating, Inc
State BD SWD #4
API # 30-025-35662
1894 FNL x 604 FEL
Unit Letter 'H', Section 2, T12S, R33E
Lea County, New Mexico
C108 Application for Authorization to Inject

VII.

1. Anticipated disposal volume – 8000 BWPD with a maximum of 12000 BWPD.
2. System will be closed. Water will be pipelined in from area Pogo producers (Lease SWD).
3. Anticipated disposal pressure: Average 400 psig, Maximum 2200 psig.
4. Disposed fluid will be pipelined in from Pogo producing wells in the immediate area. Please see Exhibit "D" for fluid analysis from area wells.
5. Please see Exhibit "D" for disposal zone fluid analysis.

Operator only.

VIII.

Formation	Reported Depth (ft)
T. Wolfcamp	8378
T. Mississippi	10312
T. Woodford	10700
T. Devonian	10728
Proposed disposal zone	11000 - 11500
T. Simpson	11694 (est)

IX.

Proposed Completion Procedure: Drill out CIBP, squeeze perfs as appropriate, WOC, drill out cement, test casing, then repeat the process for each CIBP/perf set leaving only the bottom set of perfs open (11022' – 11056'). Attempt to swab in-situ fluid sample. If ok, deepen well from current TD of 11150' to 11500'. Selectively perforate Devonian between 11000' to 11140'. Run 3-1/2" internally plastic coated tubing with 7" packer and set packer a maximum of 100' above top perf. Perform pump-in test to establish injection rate. If pump-in test results are favorable, no stimulation is planned. If pump-in test results are unfavorable, an acid job will be pumped.

X.

Any logs performed will be submitted after completion.

XI.

NM OSE records indicate there are 12 fresh water wells within the 1 mile Area of Review. See Exhibit "E" for copies of OSE data base queries, an AOR map and water sample test results.

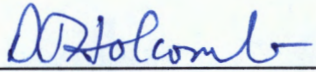
XII.

Available geological and engineering data have been examined and no evidence of open faults or hydrological connection between the proposed disposal zone and any underground sources of drinking water has been found.

Pogo Oil & Gas Operating, Inc
State BD SWD #4
API # 30-025-35662
1894 FNL x 604 FEL
Unit Letter 'H', Section 2, T12S, R33E
Lea County, New Mexico
C108 Application for Authorization to Inject

XIII.

Please see Exhibit "F" for Proof of Notice. Included is a map of the Area of Review, list of noticees, certified mail electronic signature receipts for notices and the original affidavit of publication from the Lovington Leader newspaper for the required public notice.

Danny J. Holcomb 
Agent for Pogo Oil & Gas Operating, Inc

Date: 12/2/2017

**Pogo Oil & Gas Operating, Inc
State BD SWD #4
API # 30-025-35662
1894 FNL X 604 FEL
Unit Letter "H", Section 2, T12S, R33E
Lea County, New Mexico**

Well Data

Data obtained from records maintained by NMOCD.

Well spudded on 1/21/2003 by Samson Resources Company as a Siluro-Devonian oil well test.

13-3/8" 48# casing was set in 17-1/2" hole at 350'. Cemented with 210 sacks of cement. Cement circulated to surface.

9-5/8" 36# casing was set in 12-1/4" hole at 3847'. Cemented with 1640 sacks of cement. Cement circulated to surface.

7" 29# and 20# casing was set in 8-3/4" hole at 11140'. Cemented with 1640 sacks of cement. Cement did not circulate. Top of cement at ~3500' (C-105). TD at 11150'.

In April, 2003, the well was perforated at 11022' – 52' and completed as a Devonian oil well. In the same month, those perforations were abandoned with a CIBP set at 11000' capped with 20' of cement. The well was perforated at 10769' – 84' and 10800' – 808' (Dev).

In February, 2004, the perforations at 10800' – 808' were abandoned with a CIBP set at 10795' capped with 5' of cement.

In May, 2004, the perforations at 10769' – 84' were abandoned with a CIBP set at 10765' capped with 20' of cement. The well was perforated at 10730' – 50' (Dev).

In November, 2004, the perforations at 10730' – 50' were abandoned with a CIBP set at 10680' capped with 20' of cement. The well was in TA status.

In September, 2006, the well was perforated at 10290' – 300' (Atoka). Those perforations were abandoned within a week with a CIBP set at 10250' capped with 20' of cement. Additional perforations were added at 9252' – 316' (Penn) and abandoned a week later with a CIBP set at 9240' capped with 10' of cement. Perforations at 9114' – 212' (Penn) were added and abandoned 4 days later with a CIBP set at 9090' capped with 10' of cement. Perforations were added at 8992' – 96' and abandoned 4 days later with a CIBP set at 8970'. Perforations were added at 8848' – 8946' and 8954' – 58'.

EXHIBIT "A"

**Pogo Oil & Gas Operating, Inc
State BD SWD #4
API # 30-025-35662
1894 FNL X 604 FEL
Unit Letter "H", Section 2, T12S, R33E
Lea County, New Mexico**

Well Data (continued)

In December, 2009, those perforations were abandoned with a CIBP set at 8695' capped with 35' of cement. Perforations were added at 8528' – 88' (Wolfcamp). Those perforations were subsequently abandoned (timing unclear) with a CIBP set at 8500' capped with 35' of cement.

In September, 2011, another CIBP was set at 6100' capped with 35' of cement. Perforations were added at 5784' – 842' (Glorieta). Those perforations were abandoned with a CIBP set at 5750' capped with 35' of cement. Additional perforations were added at 4428' – 46' (San Andres). Those perforations were abandoned with a CIBP set at 4380' capped with 35' of cement. The well was again in TA status.

On August 10, 2017, Pogo Oil & Gas Operating, Inc became the operator of record and desires to use this well for SWD service in the Devonian formation. Pogo operates another Devonian SWD within the AOR for the subject well and needs more SWD capacity for its own produced water.

Reported Formation Tops

Formation	Depth (ft)
Rustler	1596
Yates	2489
San Andres	3825
Glorieta	5162
Tubb	6544
Drinkard	6840
Abo	7273
Wolfcamp	8378
Penn	8590
Miss	10312
Devonian	10728

EXHIBIT "A"

CURRENT WELLBORE

TA Status

Pogo Oil & Gas Operating, Inc

State BD #4

API # 30-025-35662

1894' FNL x 604' FEL, UL 'H', Sec 2, T12S, R33E, Lea County, NM

WELL NAME:	State BD #4	FIELD: Hightower NorthPndngOCD Rvw	LBP#: 033717
STATE:	NM	COUNTY: Lea	LOCATION: 2-12S-33E
API NO:	30-025-35662	SPUD DATE: 1/21/2003	FORMATION: Wolfcamp
TD:	11150'	PSTD: 11058'	ELEVATION: 4232' GL, 4258' KB

PIPE RECORD								CEMENT & HOLE DATA				
CSG	OD	GRADE	THD	WT/FT	TOP	BTM	# JTS	BIT SIZE	DEPTH	SK	WT.	TOC
Surf	13.375"	H40	STC	48.008	Surf	300'	8	17.500"		320		Surf
Inter	9.625"	K95	LTC	38.804	Surf	2847'	86	12.250"		1540		Surf
Prod	7.000"	L80	LTC	29.006	Surf	11140'	278	8.750"		1280		-3800
Tbg												

REMARKS:

8/7/08: (10267-10300') Acidz w/2000gls 10% H₂O₂. Dropped 60 ball seats, had good action.

8/13/08: (9225'-9318') Acidz w/2000 gls, 10% H₂O₂. Balled out w/30 balls

9/18/08: (9114'-9212') Acidz w/2500 gls, 10% H₂O₂ ball out w/16 balls

9/27/08: (8948'-8949') Acidz w/2000 gls, 15% H₂O₂ HCl. Dropped 24 ball seaters—no action.

10/6/08: First Gas Sales

10/23/08: (Perfs 8884'-8988') Acidz w/2500 gls 10% H₂O₂ acid. Dropped 33 balls

12/11/08: (Perfs 8528'-8688') Acidz w/2200 gals 10% H₂O₂ acid. Dropped 88 balls
Dump 35' cement on CIBP located @ 8888', Set CIBP @ 8888' & dump 35' cement. Test complete

12/16/08: Temporarily Abandon

9/9/09/11: Set CIBP @ 8189' dump 35' cement. Perf Gamma 5784'-48', 5825'-37' & 5825'-4442' acidz w 2000 gallons 7-1/2% NEF
then acidz with 2000 gals 10% NEFE. Set CIBP @ 5780' dump 35' cement, perf 4425'-4446', acidz w/2000 gals
10% NEFE and 55 balls, set CIBP @ 4380', dump 35' cement
Temporarily Abandon

CAPACITIES	(bbl/D)	(bbl)	(cwt)
TBG: In. #			
CSG 9.625 in. 309	.07730	12.93	43400

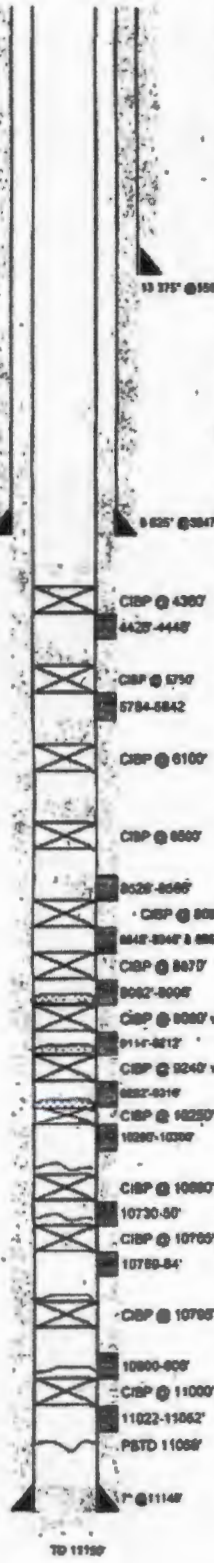
VOLUME BETWEEN	(bbl/D)	(bbl)	(cwt)
780-808			
780-820			
808-825			
825-842			

REMARKS Prior to 8/28/08 in View Comments

PERFORATION RECORD (For Perfs Prior to 9/28/08 Select View Comments)

DATE	TOP	BTM	ZONE	STATUS	SFP
(For Perfs Prior to 9/28/08 Select View Comments)					
9/9/2008	10267	10300	Alto	Abandoned	4'
8/12/2008	9262	9318	Penn	Abandoned	2
9/18/2002	9114	9212	Penn	Abandoned	
9/22/2008	8982	8988	Penn	Abandoned	4
9/28/2008	8848	8848	Penn	Abandoned	2
10/23/2008	8864	8888	Penn	Abandoned	2
12/8/2008	8528	8588	Wolfcamp	Abandoned	2
8/9/2011	5784	5842	Gamma	Abandoned	2
9/15/2011	4425	4446	San Andres	Abandoned	2

BRC WTS:	100%				
LANDMAN:	Tom Land				
GEOLOGIST:	Ron Johnson				
TUBULAR GOODS PERFORMANCE					
Material	ID (in)	Drift (in)	Collapse* (psi)	Burst* (psi)	Tensile* (lbs)
13.375" H40 STC 488	12.715	12.659	770	1,730	322,000
9.625" K95 LTC 388	8.921	8.785	2,620	3,820	488,000
7" L80 LTC 288	6.884	6.859	7,020	8,180	687,000
" #	2.882	2.887	10,840	10,180	207,220
* Safety Factor Not Included					



PREPARED BY: LeAnne Holman
 DATE: 3/16/2004
 Updated: 11/3/2004 LH
 10/24/2011 GLS

OFFICE: (432) 883-7063
 FAX: (432) 883-8847

EXHIBIT "A"

PROPOSED WELLBORE

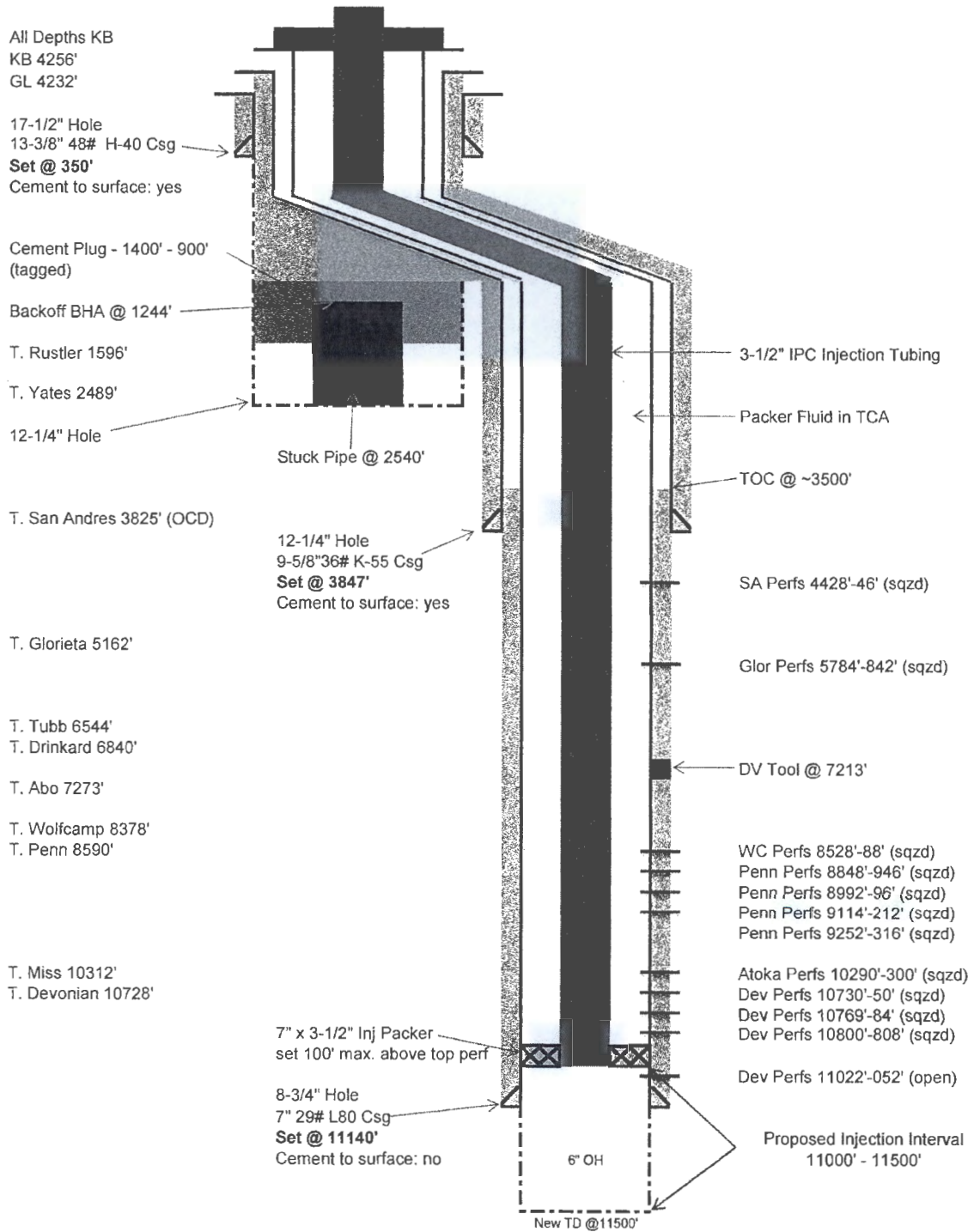
Configured for SWD Service

Pogo Oil & Gas Operating, Inc

State BD SWD #4

API # 30-025-35662

1894' FNL x 604' FEL, UL 'H' Sec 2, T12S, R33E, Lea County, NM



Drawing Not to Scale

EXHIBIT "A"

Pogo Oil & Gas Operating, Inc
State BD SWD #4
API # 30-025-35662
1894 FNL X 604 FEL
UL 'H', Sec 2, T12S, R33E
Lea County, New Mexico
Lease Map - 0.5 Mile and 2 Mile AOR

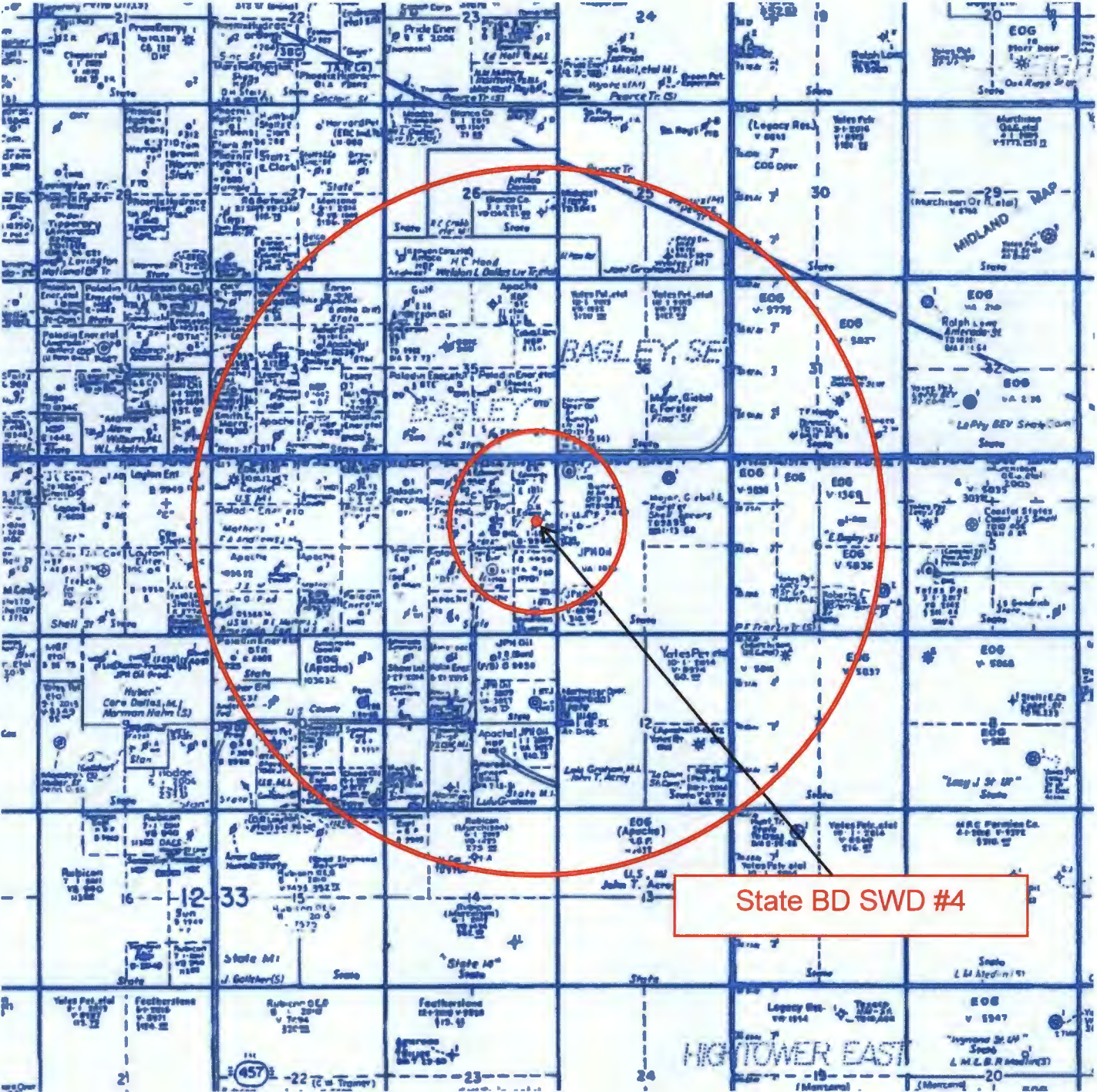
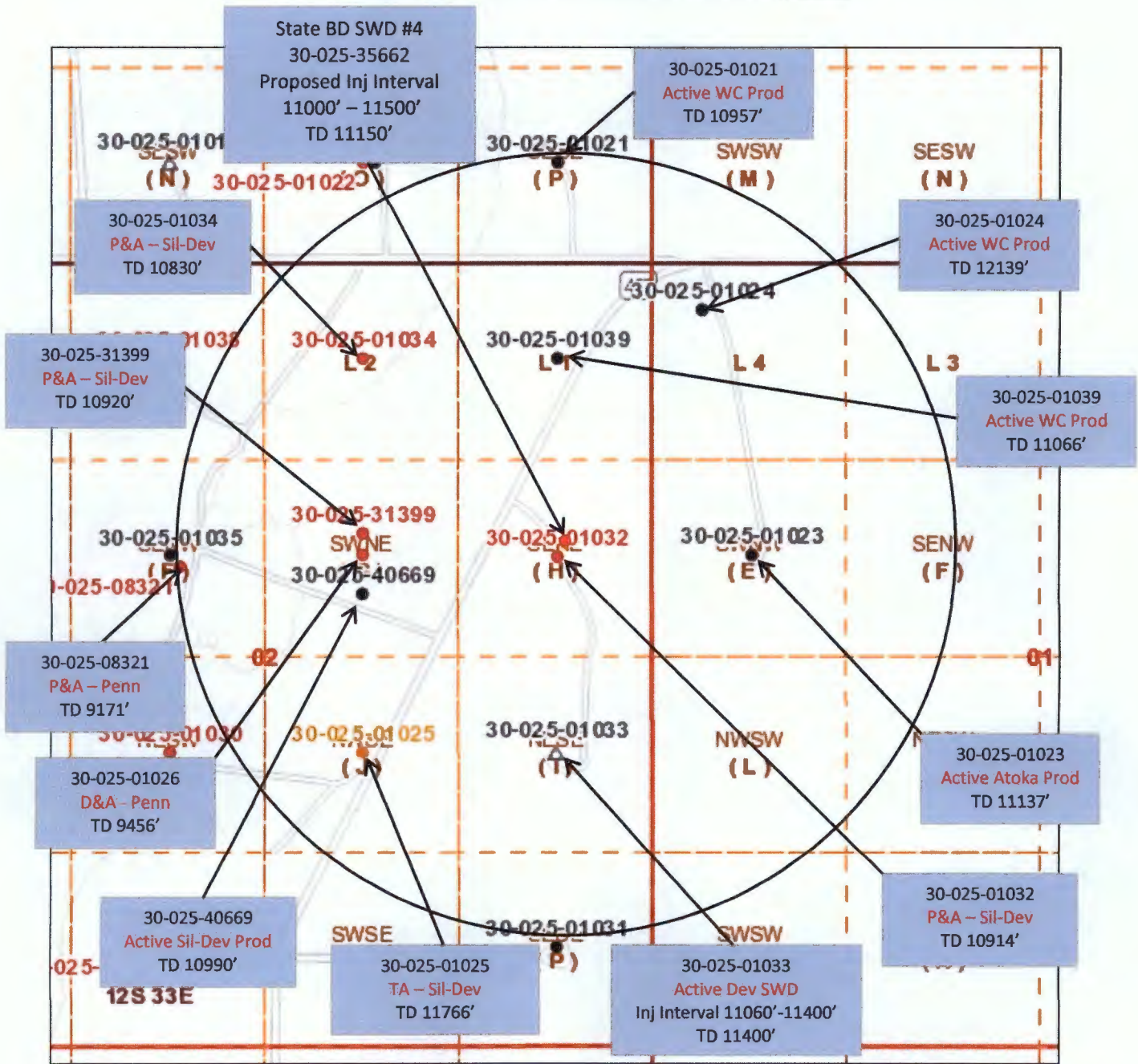


EXHIBIT "B"

Pogo Oil & Gas Operating, Inc
 State BD SWD #4
 API 30-025-35662
 1894 FNL x 604 FEL, UL 'H', Sec 2, T12S, R33E
 0.5 Mile AOR



Source - NMOCD GIS Map

EXHIBIT "C"

Pogo Oil & Gas Operating, Inc
State BD SWD #4
API # 30-025-35662
Offset Wells within 0.5 Mile AOR

There are seven offset wells within the 0.5 mile AOR that do not penetrate the proposed disposal zone.

UL, Sec, T, R	API Well No.	Well Name	TVD	Operator	Status
P-35-11S-33E	30-025-01021	State BT D #3	10957'	Applicant	Active WC producer
B-2-12S-33E	30-025-01034	State C AC 1 Com #1	10830'	Sampson Resources Co	P&A Sil-Dev producer @ 10471' - 670'
F-2-12S-33E	30-025-08321	State C AC 1 #6	9171'	Sampson Resources Co	P&A Penn well
G-2-12S-33E	30-025-01026	State BT A #2	9456'	Amerada Petroleum Corp	D&A Penn test
G-2-12S-33E	30-025-31399	State BT A #3	10920'	Paladin Energy	P&A Sil-Dev producer @ 10713' - 35'
G-2-12S-33E	30-025-40669	State BT A #4	10990'	Applicant	Active Sil-Dev producer @ 10704' - 840'
H-2-12S-33E	30-025-01032	State BD #1	10914'	Sampson Resources Co	P&A Sil-Dev producer @ 10731' - 64'

There are five offset wells within the 0.5 mile AOR that penetrate the proposed disposal zone.

UL, Sec, T, R	API Well No.	Well Name	TVD	Operator	Status
D-1-12S-33E	30-025-01024	State J #1	12139'	* NorthStar Oper Co > Blackbeard Oper, LLC	Active WC producer, 5.5" csg set @ 11788' cmt/d w/1550 sx cmt, multiple CI BPs set above Dev
E-1-12S-33E	30-025-01023	State 65 #1	11137'	* NorthStar Oper Co > Blackbeard Oper, LLC	Active Atoka producer, 4.5" liner set 8764'-11120' cmt w/325 sx cmt
A-2-12S-33E	30-025-01039	State BD #2	11066'	Applicant	Active WC producer, 5.5" csg set @ 11066', TOC @ 750' (TS), multiple CI BPs set above Dev
I-2-12S-33E	30-025-01033	State BD #3	11400'	Applicant	Active Dev SWD @ 11060' - 400', 7" csg set @ 11060', TOC @ 5500' (TS)
J-2-12S-33E	30-025-01025	State BT A #1	11766'	Applicant	TA - Sil-Dev producer, csg collapsed @ 5422', CR @ 5213' w/ 200 sx cmt, RBP @ 9629' w/21' sand on top

Note: Sampson, Paladin and Amerada were predecessor operators for these state leases now operated by the applicant.

* NorthStar Operating Company is the operator of record as of 12/29/17. However, a C-145 is pending to transfer ownership / operatorship to Blackbeard Operating, LLC. As a result, both parties were notified by the applicant.

All of these wells either have cement behind pipe and/or plugs above the proposed disposal zone. Included on pages 11 - 15 are wellbore diagrams for these five wells based on information from OCD files.

EXHIBIT "C"

OFFSET WELL WELLBORE DIAGRAM

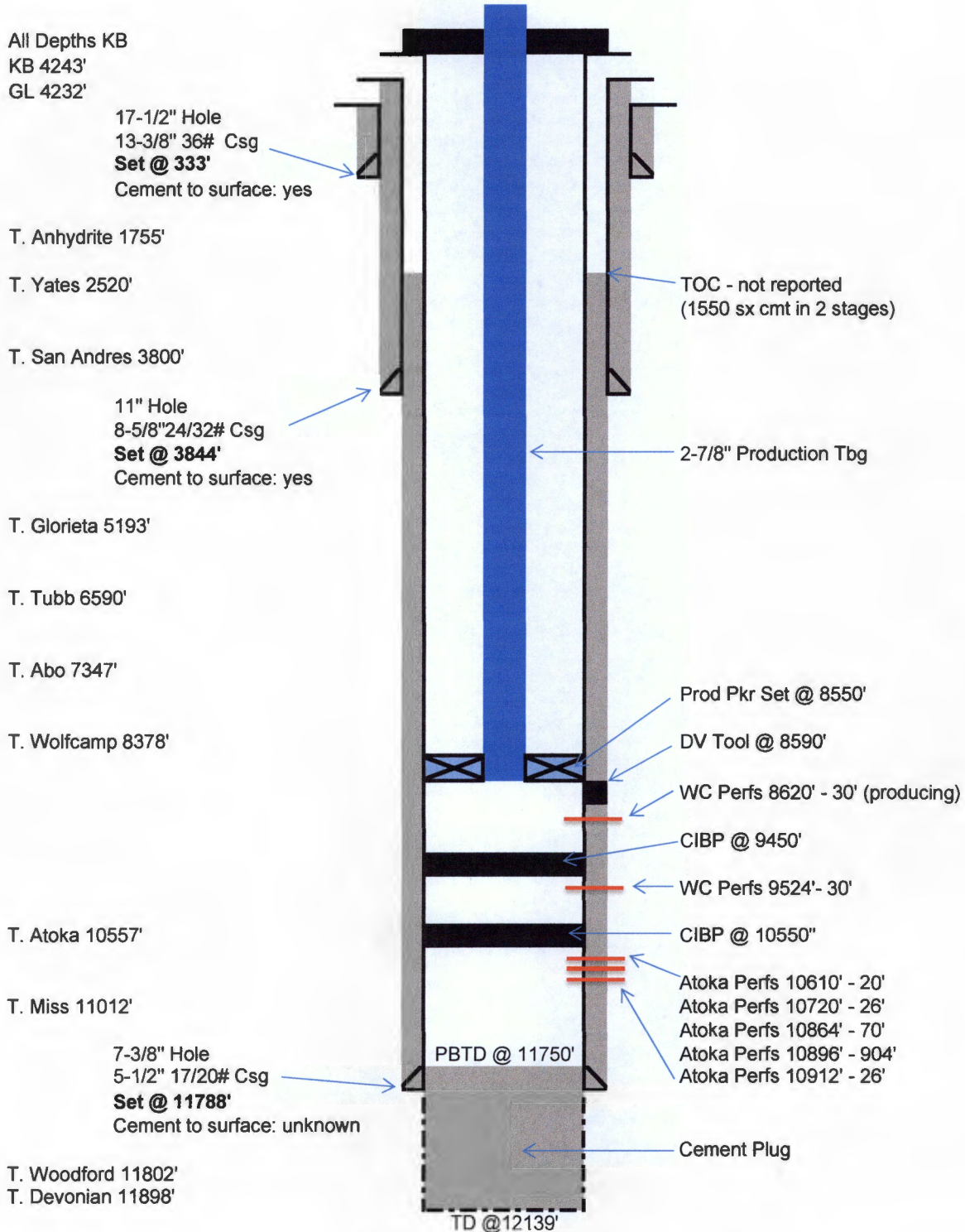
Wolfcamp Producer

Northstar Operating Co → Blackbeard Operating, LLC

State J #1

API # 30-025-01024

330' FNL x 330' FWL, UL 'D' Sec 1, T12S, R33E, Lea County, NM



Drawing Not to Scale

EXHIBIT "C"

OFFSET WELL WELLBORE DIAGRAM

Atoka/Morrow Producer

Northstar Operating Co --> Blackbeard Operating, LLC
 State 65 #1
 API # 30-025-01023
 1977' FNL x 669' FWL, UL 'E' Sec 1, T12S, R33E, Lea County, NM

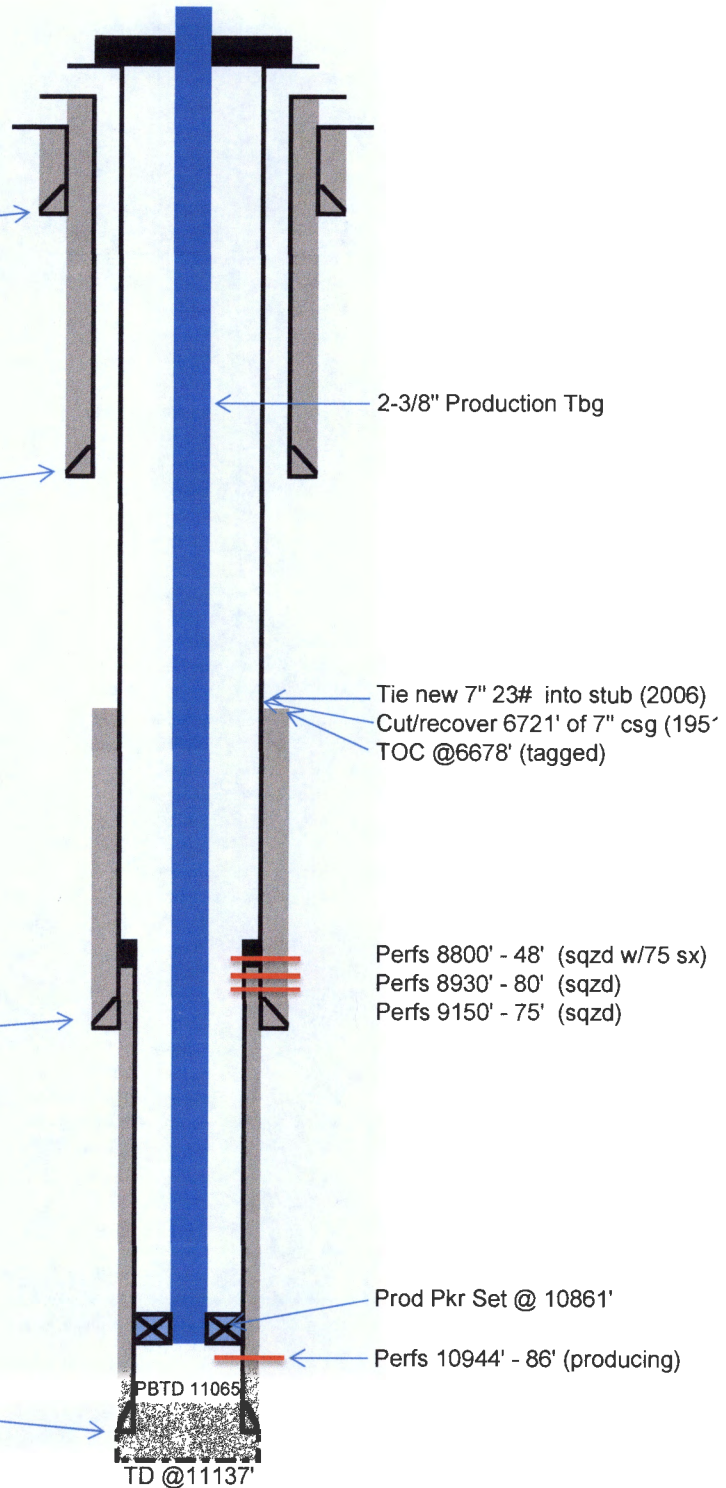
All Depths KB
 KB - not reported
 GL 4229'

17-1/2" Hole
 13-3/8" 40# Csg
Set @ 298'
 Cement to surface: yes

12-1/4" Hole
 9-5/8" 36# Csg
Set @ 3940'
 Cement to surface: yes

8-3/4" Hole
 7" 26# Csg
Set @ 9349'
 Cement to surface: no

6-1/8" Hole
 4-1/2" 11.6# liner
Set @ 8764' - 11120'
 Cement to TOL



Tie new 7" 23# into stub (2006)
 Cut/recover 6721' of 7" csg (195'
 TOC @ 6678' (tagged)

Perfs 8800' - 48' (sqzd w/75 sx)
 Perfs 8930' - 80' (sqzd)
 Perfs 9150' - 75' (sqzd)

Prod Pkr Set @ 10861'
 Perfs 10944' - 86' (producing)

Drawing Not to Scale

Note: No formation tops reported
 Perfs are identified in both
 Atoka and Morrow formations

EXHIBIT "C"

OFFSET WELL WELLBORE DIAGRAM

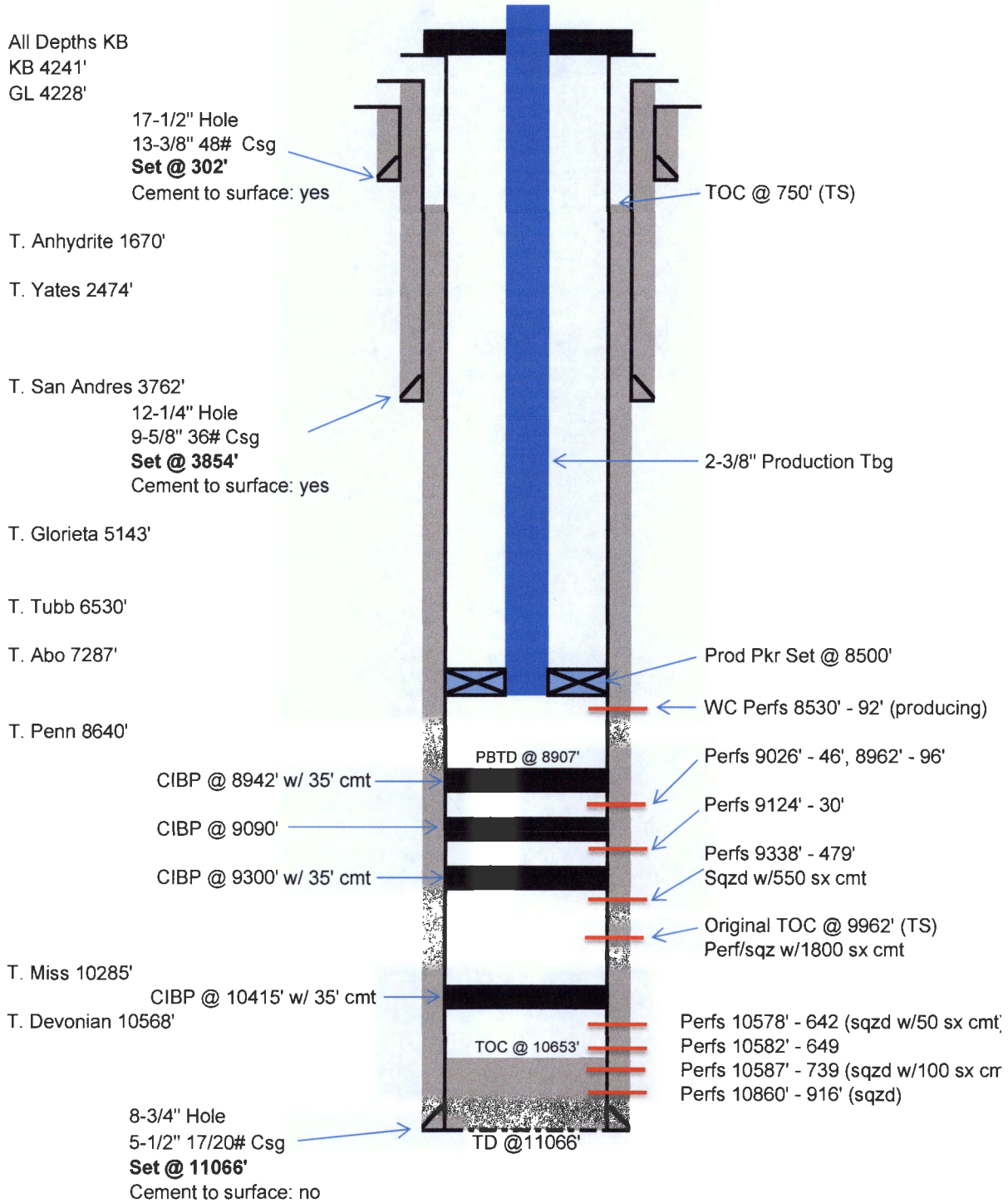
Wolfcamp Producer

Pogo Oil & Gas Operating, Inc

State BD #2

API # 30-025-01039

660' FNL x 660' FEL, UL 'A' Sec 2, T12S, R33E, Lea County, NM



Drawing Not to Scale

EXHIBIT "C"

OFFSET WELL WELLBORE DIAGRAM

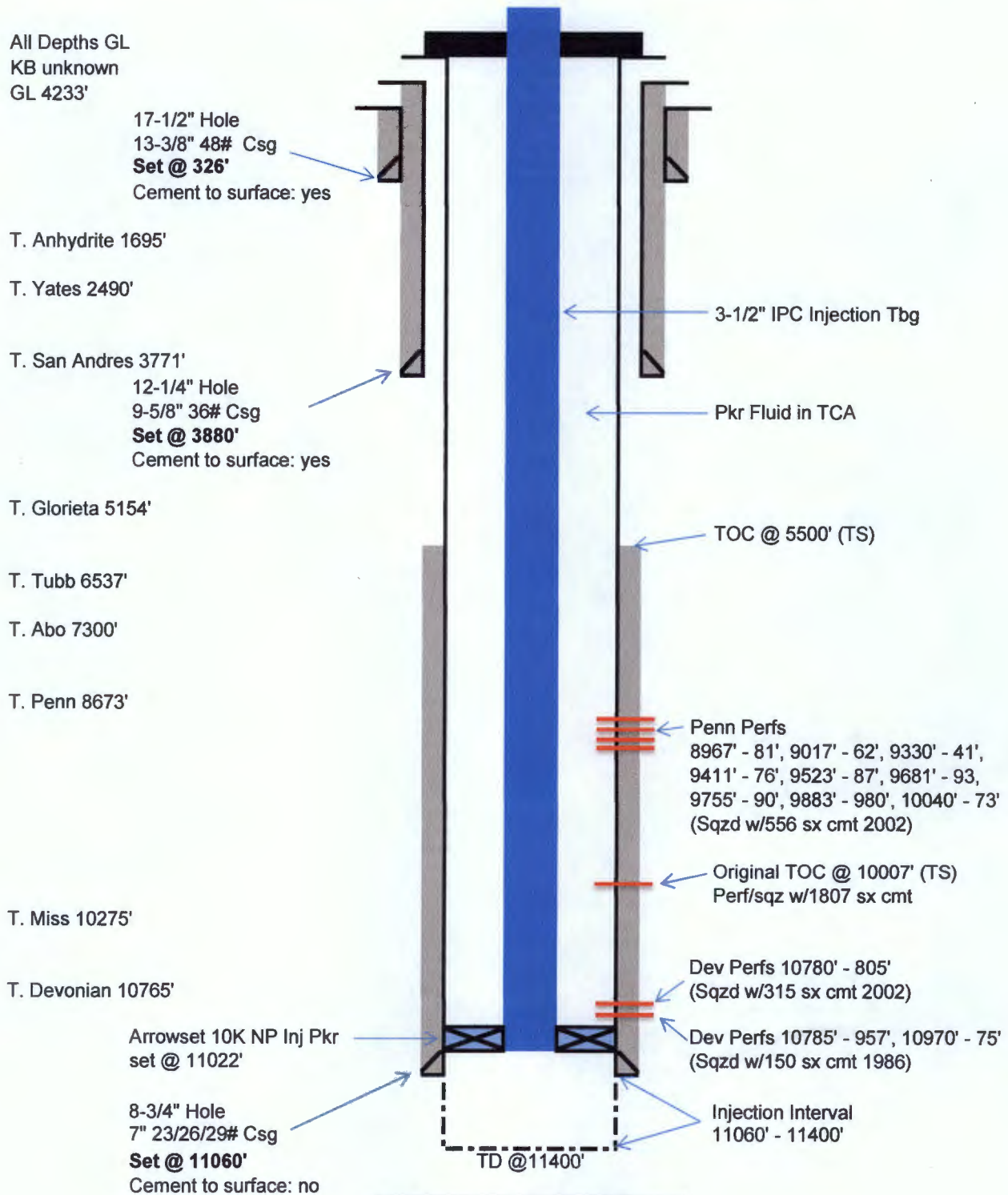
Active Devonian SWD Service (AO SWD-831)

Pogo Oil & Gas Operating, Inc

State BD #3

API # 30-025-01033

1980' FSL x 660' FEL, UL 'I' Sec 2, T12S, R33E, Lea County, NM



Drawing Not to Scale

EXHIBIT "C"

OFFSET WELL WELLBORE DIAGRAM

TA Devonian Producer

Pogo Oil & Gas Operating, Inc

State BT A #1

API # 30-025-01025

1980' FSL x 1980' FEL, UL 'J' Sec 2, T12S, R33E, Lea County, NM

All Depths KB

KB 4235'

GL 4224'

17-1/4" Hole
13-3/8" 54.5# Csg
Set @ 287'
Cement to surface: yes

T. Anhydrite 1700'

B. Salt 2410'

T. San Andres 3770'

11" Hole
8-5/8" 32# Csg
Set @ 3929'
Cement to surface: no

Cmt Ret @ 5213' (1991)

TOC @ 3170' (TS)

Csg Leak @ 5392' - 452' (1991)
Sqzd w/50 sx cmt
Found csg collapsed during DO
Milled csg 5425' - 90'
Resqz leak w/200 sx cmt

T. Clearfork 5904'

T. Tubb 6590'

T. Abo 7273'

TOC @ 7970' (TS)

T. Wolfcamp 8405'

T Penn 8628'

RBP @ 9629' w/21' sand (1991)

T. Miss 10310'

T. Devonian 10785'

Cmt Ret @ 10800' (1969)
Cmt Ret @ 10850' (1960)
Cmt Ret @ 10896' (1959)
Cmt Ret @ 10940' (1955)
Cmt Ret @ 10990' (1949)

Perfs 10752' - 59', 10763' - 75'
Perfs 10812' - 48' (sqzd w/150 sx cn)
Perfs 10865' - 95' (sqzd w/75 sx cmt)

Perfs 10912' - 34' (sqzd w/75 sx cmt)
Perfs 10950' - 65' (sqzd w/100 sx cn)
Perfs 11000' - 15' (sqzd w/35 sx cmt)

7-7/8" Hole
5-1/2" 17# Csg
Set @ 11200'
Cement to surface: no

(Cmt Sqz - 150 sx (1949)
11453' - 030'

TD @ 11766'

(Cmt Plug - 35 sx (1949)
11766' - 453'

Drawing Not to Scale

EXHIBIT "C"

Pogo Oil & Gas Operating, Inc
State BD SWD #4
API # 30-025-35662
Unit Letter 'H', Section 2, T12S, R33E
Lea County, New Mexico

Injection Formation Water			
<u>API Number</u>	<u>Formation</u>	<u>TDS</u>	<u>Chlorides</u>
30-025-01034	Devonian	53,150	30,140

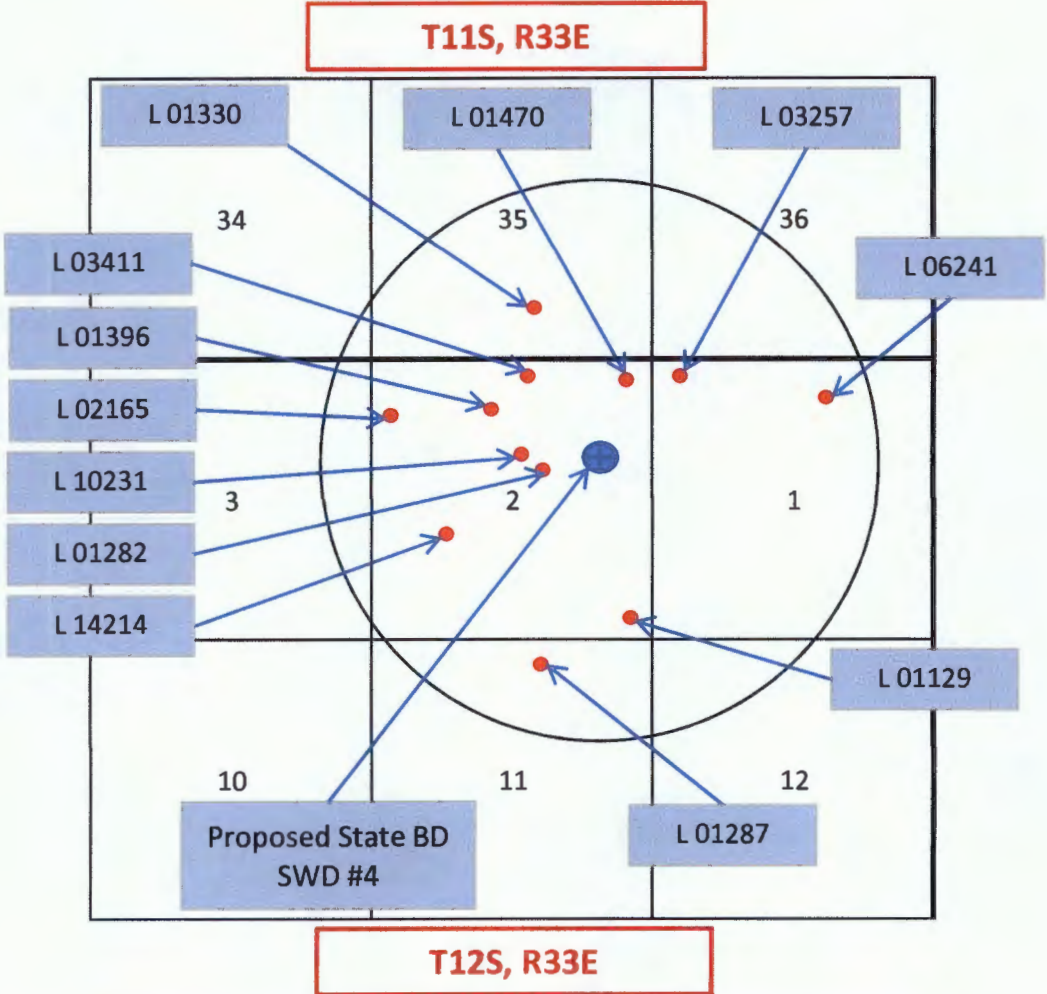
Possible Disposal Fluid			
<u>API Number</u>	<u>Formation</u>	<u>TDS</u>	<u>Chlorides</u>
30-025-01047	Devonian	45,817	26,290
30-025-01023	Penn	104,888	64,130
30-025-01037	Penn	88,955	52,400
30-025-21310	Wolfcamp	179,242	113,000

Data obtained from GO-Tech NMWAIDS data base.

*Notes: No San Andres
Produced water*

EXHIBIT "D"

Pogo Oil & Gas Operating, Inc
State BD SWD #4
API # 30-025-35662
1 Mile AOR for Water Wells



According to OSE records, there are twelve fresh water wells within 1 mile of the State BD SWD #4

Exhibit "E"



New Mexico Office of the State Engineer Water Column/Average Depth to Water

(A CLW##### in the POD suffix indicates the POD has been replaced & no longer serves a water right file.)

(R=POD has been replaced,
O=orphaned,
C=the file is closed)

(quarters are 1=NW 2=NE 3=SW 4=SE)
(quarters are smallest to largest)

(NAD83 UTM in meters)

(In feet)

POD Number	POD Sub-Code	basin	County	Q 64	Q 16	Q 4	Sec	Tws	Range	X	Y	Depth Well	Depth Water	Water Column
L 01327	L	LE		3	3	35	11S	33E		631143	3687301*	115	55	60
L 01330	L	LE		3	4	35	11S	33E		631947	3687312*	115	55	60
L 06198	L	LE		1	4	36	11S	33E		633551	3687735*	102	40	62
L 06949	L	LE		1	1	35	11S	33E		631025	3688607*	135	80	55
L 09545	L	LE		2	4	34	11S	33E		630735	3687698*	154	70	84
L 10186	L	LE		1	4	36	11S	33E		633551	3687735*	90	40	50
L 10187	L	LE		1	1	35	11S	33E		631126	3688508*	90		

Average Depth to Water: 56 feet

Minimum Depth: 40 feet

Maximum Depth: 80 feet

Record Count: 7

PLSS Search:

Section(s): 34, 35, 36

Township: 11S

Range: 33E

Water well in red box above is located within the 1 mile AOR.

EXHIBIT "E"

*UTM location was derived from PLSS - see Help

The data is furnished by the NMOSE/ISC and is accepted by the recipient with the expressed understanding that the OSE/ISC make no warranties, expressed or implied, concerning the accuracy, completeness, reliability, usability, or suitability for any particular purpose of the data.



New Mexico Office of the State Engineer Water Column/Average Depth to Water

(A CLW##### in the POD suffix indicates the POD has been replaced & no longer serves a water right file.)

(R=POD has been replaced,
O=orphaned,
C=the file is closed)

(quarters are 1=NW 2=NE 3=SW 4=SE)
(quarters are smallest to largest)

(NAD83 UTM in meters)

(In feet)

POD Number	POD Sub-Code	basin	County	Q 64	Q 16	Q 4	Sec	Tws	Rng	X	Y	Depth Well	Depth Water	Water Column
<u>L 01125</u> POD1	L	LE		3	4	03	12S	33E		630365	3685679*	90	50	40
<u>L 01129</u> POD1	L	LE		4	4	02	12S	33E		632375	3685708*	130	55	75
<u>L 01233</u> POD1	L	LE		4	1	03	12S	33E		629949	3686478*	130	45	85
<u>L 01241</u>	L	LE		2	3	03	12S	33E		629955	3686075*	119	50	69
<u>L 01282</u>	L	LE		3	2	02	12S	33E		631961	3686508*	122	55	67
<u>L 01287</u>	L	LE		1	2	11	12S	33E		631979	3685300*	130	65	65
<u>L 01291</u>	L	LE		3	1	12	12S	33E		632787	3684908*	90	55	35
<u>L 01331</u>	L	LE		2	1	03	12S	33E		629943	3686880*	125	68	57
<u>L 01396</u>	L	LE		2	1	02	12S	33E		631552	3686905*	126	45	81
<u>L 01470</u>	L	LE		2	2	02	12S	33E		632356	3686915*	110	45	65
<u>L 02073</u>	L	LE		1	4	4	11	12S	33E	632295	3684197*	130	49	81
<u>L 02165</u>	L	LE		3	1	1	02	12S	33E	631049	3686799*	114		
<u>L 03257</u>	L	LE		1	1	1	01	12S	33E	632657	3687020*	155	55	100
<u>L 03411</u>	L	LE		2	2	1	02	12S	33E	631651	3687004*	121	50	71
<u>L 06241</u>	L	LE		1	2	01	12S	33E		633562	3686931*	122	46	76
<u>L 06668</u>	L	LE		3	3	3	03	12S	33E	629457	3685565*	130	55	75
<u>L 10231</u>	L	LE		1	3	2	02	12S	33E	631860	3686607*	134	42	92
<u>L 14214</u> POD1	L	LE		2	1	3	02	12S	33E	631190	3685119	59		

Average Depth to Water: 51 feet

Minimum Depth: 42 feet

Maximum Depth: 68 feet

Water wells in red boxes above are located within the 1 mile AOR.

Record Count: 18

PLSS Search:

Section(s): 1, 2, 3, 11, 12 Township: 12S Range: 33E

EXHIBIT "E"

*UTM location was derived from PLSS - see Help

The data is furnished by the NMOSE/ISC and is accepted by the recipient with the expressed understanding that the OSE/ISC make no warranties, expressed or implied, concerning the accuracy, completeness, reliability, usability, or suitability for any particular purpose of the data.

Fresh Water Well Test Results



Champion
Technologies, Inc.

Committed To Improvement

Customer: Samson Resources Company
Attention: Floyd Steed

Water Analysis Report

12/10/01

Address: 4419 Harlowe
Midland, TX 79703

Lease: State 8D
Formation:

CC:

Target Name: State East Water Well

Sample Point: State East Water Well Sample Date: 11/25/2001 Test Date: 12/06/2001

Water Analysis (mg/L)

Calcium	160
Magnesium	170
Barium	
Strontium	
Sodium(calc.)	2185
Bicarbonate Alkalinity	
Sulfate	200
Chloride	4000

Appended Data (mg/L)

CO2	
H2S	
Iron	3

Physical Properties

Ionic Strength(calc.)	0.13
pH(calc.)	
Temperature(°F)	90
Pressure(psia)	50
Density	

Additional Data

Specific Gravity		Dew Point
Total Dissolved Solids(Mg/L)		Lead
Total Hardness(CaCO3 Eq Mg/L)	1097	Zinc

Calcite Calculation Information

Calculation Method	Value
CO2 in Brine(mg/L)	

Remarks:

SI & PTB Results

Scale Type	SI	PTB
Calcite (Calcium Carbonate)		
Gypsum (Calcium Sulfate)	-1.98	
Hemihydrate (Calcium Sulfate)	-1.80	
Anhydrite (Calcium Sulfate)	-2.23	
Barite (Barium Sulfate)		
Celestite (Strontium Sulfate)		



Champion
Technologies, Inc.

Committed To Improvement

Customer: Samson Resources Company
Attention: Floyd Steed

Water Analysis Report

12/10/01

Address: 4419 Harlowe
Midland, TX 79703

Lease: State 8D
Formation:

CC:

Target Name: State West Water Well

Sample Point: State West Water Well Sample Date: 11/25/2001 Test Date: 12/06/2001

Water Analysis (mg/L)

Calcium	160
Magnesium	170
Barium	
Strontium	
Sodium(calc.)	909
Bicarbonate Alkalinity	
Sulfate	245
Chloride	2000

Appended Data (mg/L)

CO2	
H2S	
Iron	4

Physical Properties

Ionic Strength(calc.)	0.06
pH(calc.)	
Temperature(°F)	90
Pressure(psia)	50
Density	

Additional Data

Specific Gravity		Dew Point
Total Dissolved Solids(Mg/L)		Lead
Total Hardness(CaCO3 Eq Mg/L)	1097	Zinc

Calcite Calculation Information

Calculation Method	Value
CO2 in Brine(mg/L)	

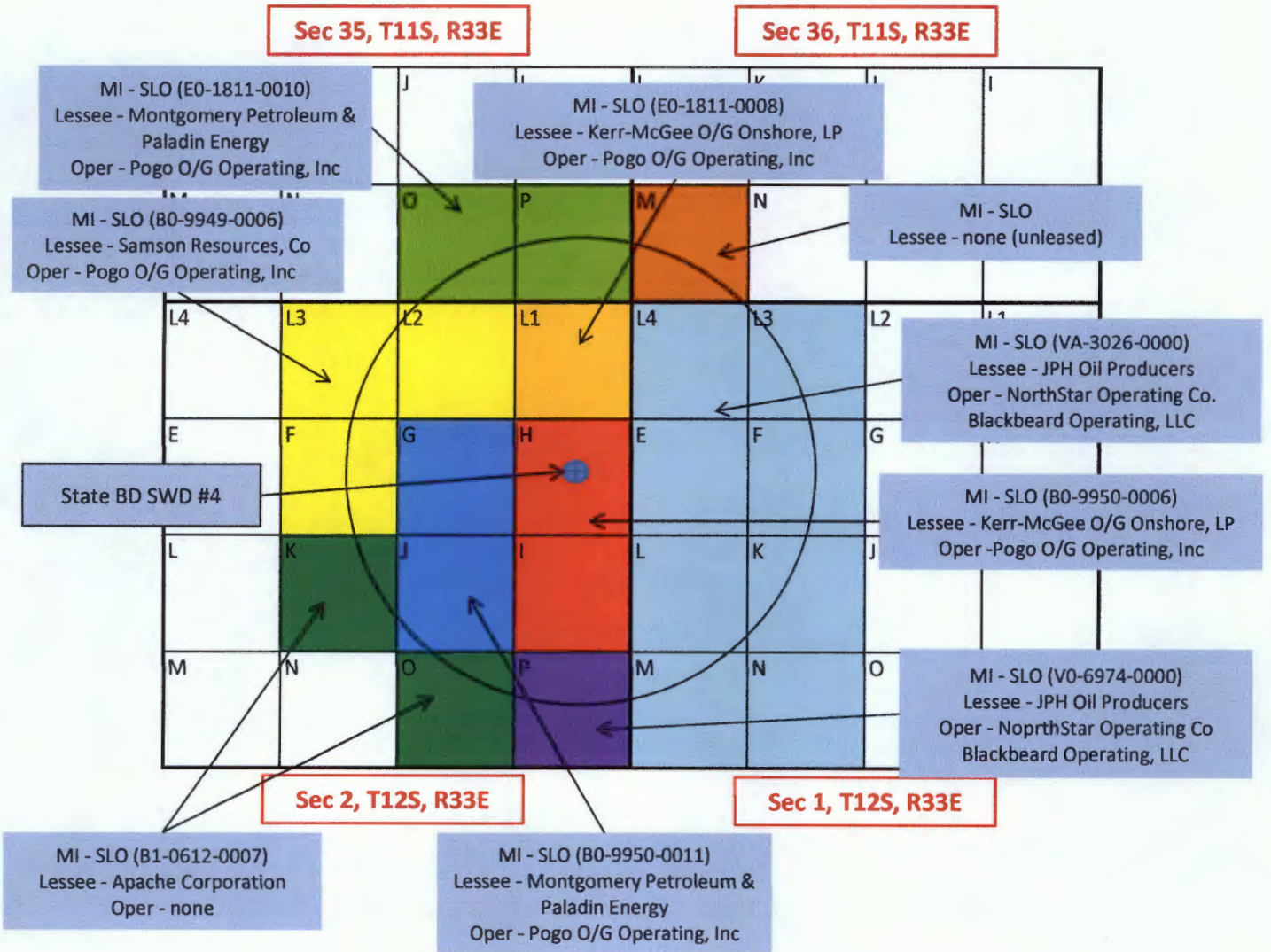
Remarks:

SI & PTB Results

Scale Type	SI	PTB
Calcite (Calcium Carbonate)		
Gypsum (Calcium Sulfate)	-1.86	
Hemihydrate (Calcium Sulfate)	-1.66	
Anhydrite (Calcium Sulfate)	-2.11	
Barite (Barium Sulfate)		
Celestite (Strontium Sulfate)		

EXHIBIT "E"

Pogo Oil & Gas Operating, Inc.
 State BD SWD #4
 API # 30-025-35662
 0.5 Mile AOR



This location 1894 FNL X 604 FEL
 Surface Owner - State of New Mexico, Commissioner of Public Land
 Drawing not to scale

EXHIBIT "F"

Pogo Oil and Gas Operating, Inc
State BD SWD #4
API #30-025-35662

EXHIBIT 'F' - NOTIFICATION LIST

#	NAME	ADDRESS	CITY STATE ZIP	TYPE
1	State of New Mexico Commissioner of Public Land	P. O. Box 1148	Santa Fe, NM 87504	Surface Owner
	Marcia Mathers Hilburn	P. O. Box 978	Tatum, NM 88267	Surface Lessee

Section 35, T11S, R33E, NMPM (ULs O, P)

#	NAME	ADDRESS	CITY STATE ZIP	TYPE
	State of New Mexico Commissioner of Public Land	P. O. Box 1148	Santa Fe, NM 87504	Mineral Owner
	Montgomery Petroleum & Paladin Energy (Pogo bought Paladin interest)	4925 Greenville Ave, Suite 965	Dallas, TX 75229	Lessee
	Pogo Oil & Gas Operating, Inc	1515 Calle Sur, Suite 174	Hobbs, NM 88240	Operator

Section 36, T11S, R33E, NMPM (UL M)

#	NAME	ADDRESS	CITY STATE ZIP	TYPE
	State of New Mexico Commissioner of Public Land	P. O. Box 1148	Santa Fe, NM 87504	Mineral Owner
	none			Unleased

Section 1, T12S, R33E, NMPM (ULs L3, L4, E, F, K, L, M, N)

#	NAME	ADDRESS	CITY STATE ZIP	TYPE
	State of New Mexico Commissioner of Public Land	P. O. Box 1148	Santa Fe, NM 87504	Mineral Owner
	JHP Oil Producers	P. O. Box 565	Lovington, NM 88260	Lessee
2	NorthStar Operating Company*	P. O. Box 10708	Midland, TX 79702	Operator
3	Blackbeard Operating, LLC**	201 W. Wall St, Suite 900	Midland, TX 79701	Operator

Section 2, T12S, R33E, NMPM (UL L1)

#	NAME	ADDRESS	CITY STATE ZIP	TYPE
	State of New Mexico Commissioner of Public Land	P. O. Box 1148	Santa Fe, NM 87504	Mineral Owner
	Kerr-McGee O/G Onshore, LP	P. O. Box 1330	Houston, TX 77251	Lessee
	Pogo Oil & Gas Operating, Inc	1515 Calle Sur, Suite 174	Hobbs, NM 88240	Operator

Section 2, T12S, R33E, NMPM (ULs L2, L3, F)

#	NAME	ADDRESS	CITY STATE ZIP	TYPE
	State of New Mexico Commissioner of Public Land	P. O. Box 1148	Santa Fe, NM 87504	Mineral Owner
	Samson Resources, Co	15 E. Fifth Street, Suite 1000	Tulsa, OK 74103	Lessee
	Pogo Oil & Gas Operating, Inc	1515 Calle Sur, Suite 174	Hobbs, NM 88240	Operator

Section 2, T12S, R33E, NMPM (ULs G, J)

#	NAME	ADDRESS	CITY STATE ZIP	TYPE
	State of New Mexico Commissioner of Public Land	P. O. Box 1148	Santa Fe, NM 87504	Mineral Owner
	Montgomery Petroleum & Paladin Energy (Pogo bought Paladin interest)	4925 Greenville Ave, Suite 965	Dallas, TX 75229	Lessee
	Pogo Oil & Gas Operating, Inc	1515 Calle Sur, Suite 174	Hobbs, NM 88240	Operator

Notified parties

* Operator of Record pending approval of C-145 dated 9/1/17

** New Operator of Record when pending C-145 is approved by OCD

EXHIBIT "F"

Pogo Oil and Gas Operating, Inc
 State BD SWD #4
 API #30-025-35662

EXHIBIT 'F' - NOTIFICATION LIST

Section 2, T12S, R33E, NMPM (ULs H, I)

#	NAME	ADDRESS	CITY STATE ZIP	TYPE
	State of New Mexico Commissioner of Public Land	P. O. Box 1148	Santa Fe, NM 87504	Mineral Owner
	Kerr-McGee O/G Onshore, LP	P. O. Box 1330	Houston, TX 77251	Lessee
	Pogo Oil & Gas Operating, Inc	1515 Calle Sur, Suite 174	Hobbs, NM 88240	Operator

Section 2, T12S, R33E, NMPM (ULs K, O)

#	NAME	ADDRESS	CITY STATE ZIP	TYPE
	State of New Mexico Commissioner of Public Land	P. O. Box 1148	Santa Fe, NM 87504	Mineral Owner
4	Apache Corporation	2000 Post Oak Blvd, Suite 100	Houston, TX 77056-4400	Lessee/Operator

Section 2, T12S, R33E, NMPM (UL P)

#	NAME	ADDRESS	CITY STATE ZIP	TYPE
	State of New Mexico Commissioner of Public Land	P. O. Box 1148	Santa Fe, NM 87504	Mineral Owner
	JHP Oil Producers	P. O. Box 565	Lovington, NM 88260	Lessee
	NorthStar Operating Company*	P. O. Box 10708	Midland, TX 79702	Operator
	Blackbeard Operating, LLC**	201 W. Wall St, Suite 900	Midland, TX 79701	Operator

NMOCD Notices

#	NAME	ADDRESS	CITY STATE ZIP
	NMOCD Engineering Bureau	1220 South St. Francis Drive	Santa Fe, NM 87505
	NMOCD District 1 Office	1625 N. French Drive	Hobbs, NM 88240

 Notified parties

* Operator of Record pending approval of C-145 dated 9/1/17

** New Operator of Record when pending C-145 is approved by OCD

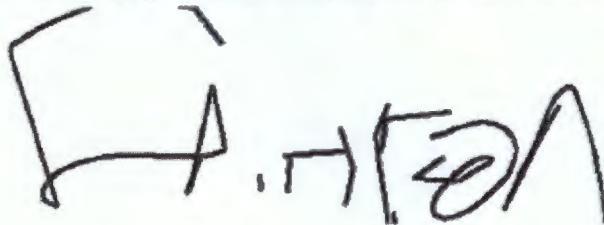
EXHIBIT "F"

Date: December 5, 2017

Danny Holcomb:

The following is in response to your December 5, 2017 request for delivery information on your Certified Mail™ item number 70151730000222123367. The delivery record shows that this item was delivered on December 5, 2017 at 11:13 am in HOUSTON, TX 77056. The scanned image of the recipient information is provided below.

Signature of Recipient :



Address of Recipient :



Thank you for selecting the Postal Service for your mailing needs.

If you require additional assistance, please contact your local Post Office or postal representative.

Sincerely,
United States Postal Service

7015 1730 0002 2212 3367

U.S. Postal Service™ CERTIFIED MAIL® RECEIPT Domestic Mail Only	
For delivery information, visit our website at www.usps.com ®	
HOUSTON, TX 77056	
Certified Mail Fee	\$3.35
Extra Services & Fees (check box, add fees as appropriate)	
<input type="checkbox"/> Return Receipt (hardcopy)	\$0.00
<input checked="" type="checkbox"/> Return Receipt (electronic)	\$0.00
<input type="checkbox"/> Certified Mail Restricted Delivery	\$0.00
<input type="checkbox"/> Adult Signature Required	\$0.00
<input type="checkbox"/> Adult Signature Restricted Delivery	\$0.00
Postage	\$1.82
Total Postage and Fees	\$6.62
Sent To	Apache Corporation
Street and Apt. No.	2000 Post Oak Blvd, Suite 100
City, State, ZIP+4®	Houston, TX 77056-4400
PS Form 3800, Apr 2016	

OFFICIAL USE
 0206
 12/02/2017
 12/02/2017
 0224 252627 1129

Date: December 5, 2017

Danny Holcomb:

The following is in response to your December 5, 2017 request for delivery information on your Certified Mail™ item number 70151730000222123374. The delivery record shows that this item was delivered on December 4, 2017 at 11:27 am in HOBBS, NM 88240. The scanned image of the recipient information is provided below.

Signature of Recipient :



Address of Recipient :

1625 N French Dr

Thank you for selecting the Postal Service for your mailing needs.

If you require additional assistance, please contact your local Post Office or postal representative.

Sincerely,
United States Postal Service

7015 1730 0002 2212 3374

U.S. Postal Service™ CERTIFIED MAIL® RECEIPT Domestic Mail Only	
For delivery information, visit our website at www.usps.com ™.	
HOBBS, NM 88240	
OFFICIAL USE	
Certified Mail Fee	\$3.35
Extra Services & Fees (check box, add fee as appropriate)	\$0.00
<input type="checkbox"/> Return Receipt (hardcopy)	\$1.25
<input checked="" type="checkbox"/> Return Receipt (electronic)	\$0.00
<input type="checkbox"/> Certified Mail Restricted Delivery	\$0.00
<input type="checkbox"/> Adult Signature Required	\$0.00
<input type="checkbox"/> Adult Signature Restricted Delivery	\$0.00
Postage	\$1.82
Total Postage and Fees	\$6.62
Sent to	NMDCD District 1 Office
Street and Apt. No., or PO Box No.	1625 N. French Dr.
City, State, ZIP+4®	Hobbs, NM 88240
Postmark Here 12/02/2017	
AMARILLO, TX 79124	
US POSTAL SERVICE	

PS Form 3800, April 2015 ESN 7500-08-000-9017 See Reverse for Instructions

Date: December 19, 2017

Danny Holcomb:

The following is in response to your December 19, 2017 request for delivery information on your Certified Mail™ item number 70151730000222123398. The delivery record shows that this item was delivered on December 19, 2017 at 7:34 am in SANTA FE, NM 87501. The scanned image of the recipient information is provided below.

Signature of Recipient :

[Handwritten Signature]
[Handwritten Signature]

Address of Recipient :

[Handwritten Address]
 1148

Thank you for selecting the Postal Service for your mailing needs.

If you require additional assistance, please contact your local Post Office or postal representative.

Sincerely,
 United States Postal Service

9500 2122 2000 0621 5701

**U.S. Postal Service™
CERTIFIED MAIL® RECEIPT**
 Domestic Mail Only

For delivery information, visit our website at www.usps.com.

OFFICIAL USE

70151730000222123398

Certified Mail Fee	\$3.35
Extra Services & Fees (check box, add fee as appropriate)	\$0.00
<input type="checkbox"/> Return Receipt (hardcopy)	\$1.00
<input type="checkbox"/> Return Receipt (electronic)	\$0.00
<input type="checkbox"/> Certified Mail Restricted Delivery	\$0.00
<input type="checkbox"/> Adult Signature Required	\$0.00
<input type="checkbox"/> Adult Signature Restricted Delivery	\$0.00
Postage	\$1.82
Total Postage and Fees	\$5.17

Sent to: State of New Mexico
 Commissioner of Public Land
 P. O. Box 1148
 Santa Fe, NM 87504

City, State, ZIP+4®

PS Form 3800, A1

APRILLO, TX 79124
 DEC 2017
 JORDAN STATION

Date: December 27, 2017

Danny Holcomb:

The following is in response to your December 27, 2017 request for delivery information on your Certified Mail™ item number 70151730000222123404. The delivery record shows that this item was delivered on December 27, 2017 at 12:23 pm in MIDLAND, TX 79701. The scanned image of the recipient information is provided below.

Signature of Recipient :

Address of Recipient :

Thank you for selecting the Postal Service for your mailing needs.

If you require additional assistance, please contact your local Post Office or postal representative.

Sincerely,
United States Postal Service

7015 1730 0002 2212 3404

U.S. Postal Service™ CERTIFIED MAIL® RECEIPT <i>Domestic Mail Only</i>	
For delivery information, visit our website at www.usps.com	
MIDLAND TX 79701	
Certified Mail Fee	\$ 43.35
Extra Services & Fees (check box, add fee as appropriate)	
<input type="checkbox"/> Return Receipt (hardcopy)	
<input type="checkbox"/> Return Receipt (electronic)	
<input type="checkbox"/> Certified Mail Restricted Delivery	
<input type="checkbox"/> Adult Signature Required	
<input type="checkbox"/> Adult Signature Restricted Delivery	
Postage	\$ 1.82
Total Postage and Fees	\$ 6.62
Sent To	NorthStar Operating Company
Street and Apt. No.	400 W. Illinois Ave, Suite 1110
City, State, ZIP+4®	Midland, TX 79701
PS Form 3800, April 2013	

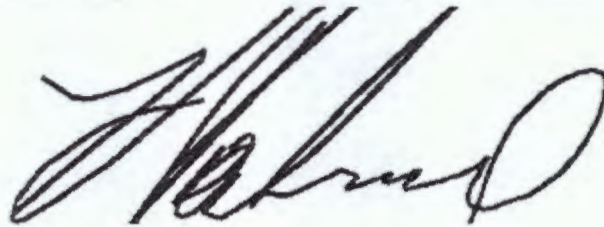
OFFICE USE
NO SIGNATURES
DEC 2017
MIDLAND TX 79701
70151730000222123404

Date: December 29, 2017

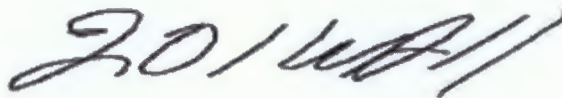
Danny Holcomb:

The following is in response to your December 29, 2017 request for delivery information on your Certified Mail™ item number 70151730000222123411. The delivery record shows that this item was delivered on December 29, 2017 at 10:01 am in MIDLAND, TX 79701. The scanned image of the recipient information is provided below.

Signature of Recipient :



Address of Recipient :



Thank you for selecting the Postal Service for your mailing needs.

If you require additional assistance, please contact your local Post Office or postal representative.

Sincerely,
United States Postal Service

2015 1730 0002 2212 3411

U.S. Postal Service™
CERTIFIED MAIL® RECEIPT
Domestic Mail Only

For delivery information, visit our website at www.usps.com®.

MIDLAND TX 79701

OFFICIAL USE

Certified Mail Fee	\$3.35
Extra Services & Fees (check box, add fee to total)	
<input type="checkbox"/> Return Receipt (hardcopy)	\$0.00
<input type="checkbox"/> Return Receipt (electronic)	\$0.00
<input type="checkbox"/> Certified Mail Restricted Delivery	\$0.00
<input type="checkbox"/> Adult Signature Required	\$0.00
<input type="checkbox"/> Adult Signature Restricted Delivery	\$0.00
Postage	\$1.82
Total Postage and Fees	\$5.62

Sent To: Blackbeard Operating, LLC
Street and Apt. No.: 201 W. Wall Street, Suite 900
City, State, ZIP+4®: Midland, TX 79701

PS Form 3800, 4/15

USPS JORDAN STATION
DEC 29 10:01 AM
MIDLAND, TX 79701

Affidavit of Publication

STATE OF NEW MEXICO)
) ss.
COUNTY OF LEA)

Joyce Clemens being first duly sworn on oath deposes and says that she is Advertising Manager of THE LOVINGTON LEADER, a thrice a week newspaper of general paid circulation published in the English language at Lovington, Lea County, New Mexico; that said newspaper has been so published in such county continuously and uninterruptedly for a period in excess of Twenty-six (26) consecutive weeks next prior to the first publication of the notice hereto attached as hereinafter shown; and that said newspaper is in all things duly qualified to publish legal notices within the meaning of Chapter 167 of the 1937 Session Laws of the State of New Mexico.

That the notice which is hereto attached, entitled Legal Notice was published in a regular and entire issue of THE LOVINGTON LEADER and not in any supplement thereof, for one (1) day(s), beginning with the issue of December 2, 2017 and ending with the issue of December 2, 2017.

And that the cost of publishing said notice is the sum of \$ 36.49 which sum has been (Paid) as Court Costs.

Joyce Clemens
Joyce Clemens, Advertising Manager
Subscribed and sworn to before me this 6th day of December , 2017.

Gina Fort
Gina Fort
Notary Public, Lea County, New Mexico
My Commission Expires June 30, 2018



Legal Notice

Pogo Oil & Gas Operating, Inc, 1515 Calle Sur, Suite 174, Hobbs, NM 88240 has filed form C-108 (Application for Authorization to Inject) with the New Mexico Oil Conservation Division seeking administrative approval to convert the State BD #4, API 30-025-35662, 1894 FNL x 604 FEL, Unit Letter "H", Section 2, T12S, R33E, Lea County, New Mexico from a temporary abandoned well to a salt water disposal well. The proposed disposal interval would be the Devonian formation through a combination of cased hole perforations and open hole between 11,000' - 11,500'. Disposal fluid would be produced water from Pogo producing oil and gas wells in the area. Anticipated disposal rate would be 8000 BWPD with a maximum rate of 12,000 BWPD. Anticipated disposal pressure would be 400 psi with a maximum disposal pressure of 2200 psi. The well is located approximately 15 miles west-north-west of Tatum, New Mexico.

All interested parties opposing the aforementioned must file objections with the New Mexico Oil Conservation Division, 1220 South St. Francis Drive, Santa Fe, New Mexico 87505 within 15 days. Additional information can be obtained by contacting Danny Holcomb at 806-471-5628.

Published in the Lovington Leader December 2, 2017

Injection Summary Report

API: 30-025-01033

STATE BD #003

		Injection		
Year	Pool	Days P/I	Water(BBLS)	Daily Av.
8/1/2016	[96101] SWD;DEVONIAN	31	107070	3454
9/1/2016	[96101] SWD;DEVONIAN	30	115526	3851
10/1/2016	[96101] SWD;DEVONIAN	31	109643	3537
11/1/2016	[96101] SWD;DEVONIAN	29	97127	3349
12/1/2016	[96101] SWD;DEVONIAN	31	95137	3069
1/1/2017	[96101] SWD;DEVONIAN	31	116331	3753
2/1/2017	[96101] SWD;DEVONIAN	28	102404	3657
3/1/2017	[96101] SWD;DEVONIAN	31	133730	4314
4/1/2017	[96101] SWD;DEVONIAN	30	136744	4558
5/1/2017	[96101] SWD;DEVONIAN	31	132396	4271
6/1/2017	[96101] SWD;DEVONIAN	19	85514	4501
7/1/2017	[96101] SWD;DEVONIAN	4	12002	3001
8/1/2017	[96101] SWD;DEVONIAN	0	0	0
9/1/2017	[96101] SWD;DEVONIAN	0	0	0
10/1/2017	[96101] SWD;DEVONIAN	0	0	0
Cum			20350588	



FORM C-108 Technical Review Summary [Prepared by reviewer and included with application; V16.2]

DATE RECORD: First Rec: 1/04/2008 Admin Complete: 1/02/2008 or Suspended: _____ Add. Request/Reply: _____

ORDER TYPE: WFX / PMX / (S)WD Number: _____ Order Date: _____ Legacy Permits/Orders: _____

Well No. 4 Well Name(s): STATE B D S W D

API : 30-0 25-35862 Spud Date: 1/21/2003 New or Old (EPA): N (UIC Class II Primacy 03/07/1982)

Footages 1894 FNL
604 FEL Lot _____ or Unit H Sec 2 Tsp 12S Rge 33E County Lea

General Location: 3.15 miles SW Tatum Pool: _____ Pool No.: _____

BLM 100K Map: Tatum Operator: Poso Oflagas Operating, Inc OGRID: 372 000 Contact: Denny, Agent

COMPLIANCE RULE 5.9: Total Wells: 214 Inactive: 3 Fincl Assur: OK Compl. Order: N/A IS 5.9 OK? Y Date: 2-26-2008

WELL FILE REVIEWED Current Status: TA

WELL DIAGRAMS: NEW: Proposed or RE-ENTER: Before Conv. After Conv. Logs in Imaging: Y

Planned Rehab Work to Well: _____

Well Construction Details		Sizes (in) Borehole / Pipe	Setting Depths (ft)	Cement Sx or Cf	Cement Top and Determination Method
Planned ___ or Existing <u>Surface</u>		<u>17 1/2" / 13 1/4"</u>	<u>350</u>	<u>320</u>	<u>Surface / Visual</u>
Planned ___ or Existing <u>Interm Prod</u>		<u>12 1/4" / 9 5/8"</u>	<u>3847</u>	<u>1640</u>	<u>Surface / Visual</u>
Planned ___ or Existing <u>Interm Prod</u>		<u>8 7/8" / 7"</u>	<u>11140</u>	<u>1250</u>	<u>2500 / CTRC.</u>
Planned ___ or Existing <u>Prod/Liner</u>					
Planned ___ or Existing <u>Liner</u>					
Planned ___ or Existing <u>OH / PERF</u>		<u>11000</u> <u>11500</u>		<u>Inj Length</u>	

Injection Lithostratigraphic Units:		Depths (ft)	Injection or Confining Units	Tops
Adjacent Unit: Litho. Struc. Por.			<u>hd</u>	<u>10700</u>
Confining Unit: Litho. Struc. Por.			<u>DV</u>	<u>10724</u>
Proposed Inj Interval TOP:			<u>OLW "C"</u>	<u>10850</u>
Proposed Inj Interval BOTTOM:				
Confining Unit: Litho. Struc. Por.				
Adjacent Unit: Litho. Struc. Por.				

Completion/Operation Details:	
Drilled TD	<u>11150</u> PBDT _____
NEW TD	<u>11500</u> NEW PBDT _____
NEW Open Hole	<input checked="" type="checkbox"/> or NEW Perfs <input checked="" type="checkbox"/>
Tubing Size	<u>3 1/2</u> in. Inter Coated? _____
Proposed Packer Depth	<u>10900</u> ft
Min. Packer Depth	<u>10900</u> (100-ft limit)
Proposed Max. Surface Press.	<u>2200</u> psi
Admin. Inj. Press.	<u>2200</u> (0.2 psi per ft)

AOR: Hydrologic and Geologic Information

POTASH: R-111-P NA Noticed? BLM Sec Ord WIPP Noticed? Salt/Salado T: _____ B: _____ NW: Cliff House fm _____

FRESH WATER: Aquifer Quaternary Max Depth 50' HYDRO AFFIRM STATEMENT By Qualified Person

NMOSE Basin: Lea CAPITAN REEF: thru _____ adj NA No. GW Wells in 1-Mile Radius? 12 FW Analysis? _____

Disposal Fluid: Formation Source(s) WC Analysis? Y On Lease Operator Only or Commercial

Disposal Interval: Inject Rate (Avg/Max BWP/D): 5K-12K Protectable Waters? NA Source: _____ System: Closed or Open

HC Potential: Producing Interval? Y Formerly Producing? _____ Method: Logs/DST/P&A/Other _____ 2-Mi Radius Pool Map

AOR Wells: 1/2-M Radius Map and Well List? _____ No. Penetrating Wells: _____ [AOR Horizontals: _____ AOR SWDs: _____]

Penetrating Wells: No. Active Wells Y Num Repairs? _____ on which well(s)? _____ Diagrams? _____

Penetrating Wells: No. P&A Wells 5 Num Repairs? _____ on which well(s)? _____ Diagrams? Y

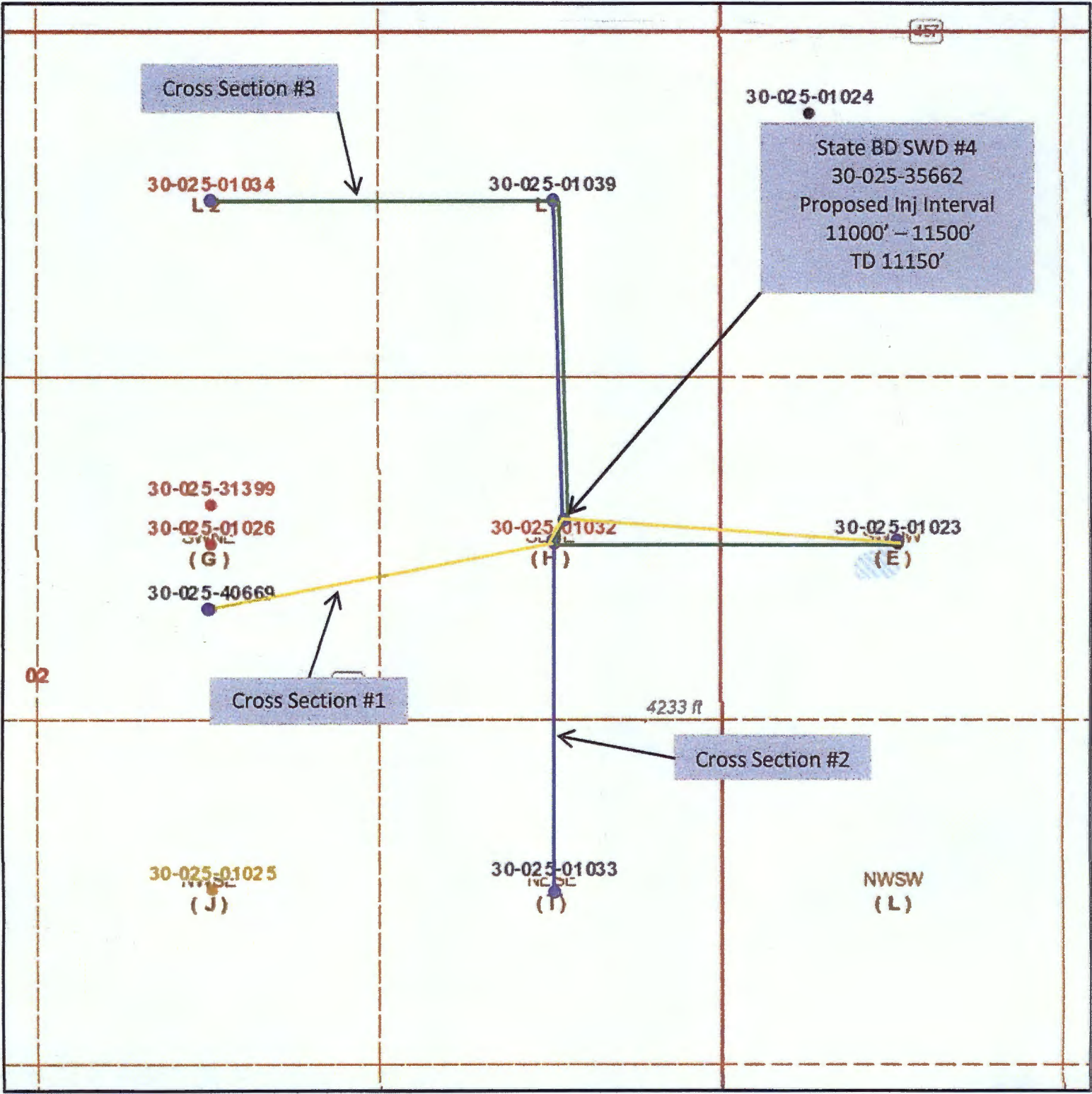
NOTICE: Newspaper Date 12-02-2007 Mineral Owner NMSLO Apache Surface Owner NMSLO N. Date 12-14-2007

RULE 26.7(A): Identified Tracts? Y Affected Persons: NORTH STAR, BURCKLEAND N. Date 12-22-2007

Order Conditions: Issues: Drill Outplaygs, As shown in WSD. Done 13-L to surface.

ins below olw contact
 ins below olw contact
 ins below olw contact
 ins below olw contact

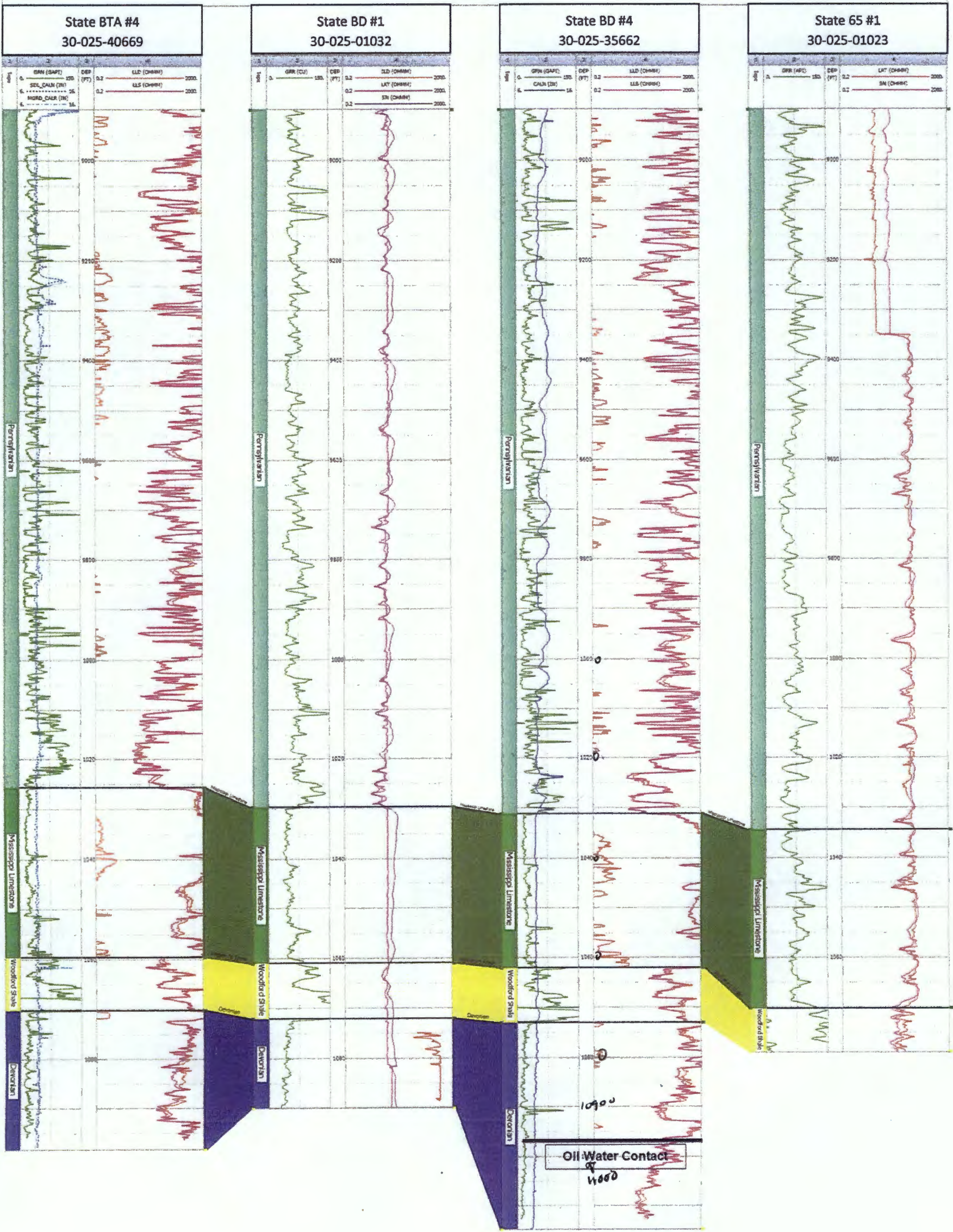
Pogo Oil & Gas Operating, Inc
 State BD SWD #4
 API 30-025-35662
 1894 FNL x 604 FEL, UL 'H', Sec 2, T12S, R33E
 Cross-Section Map



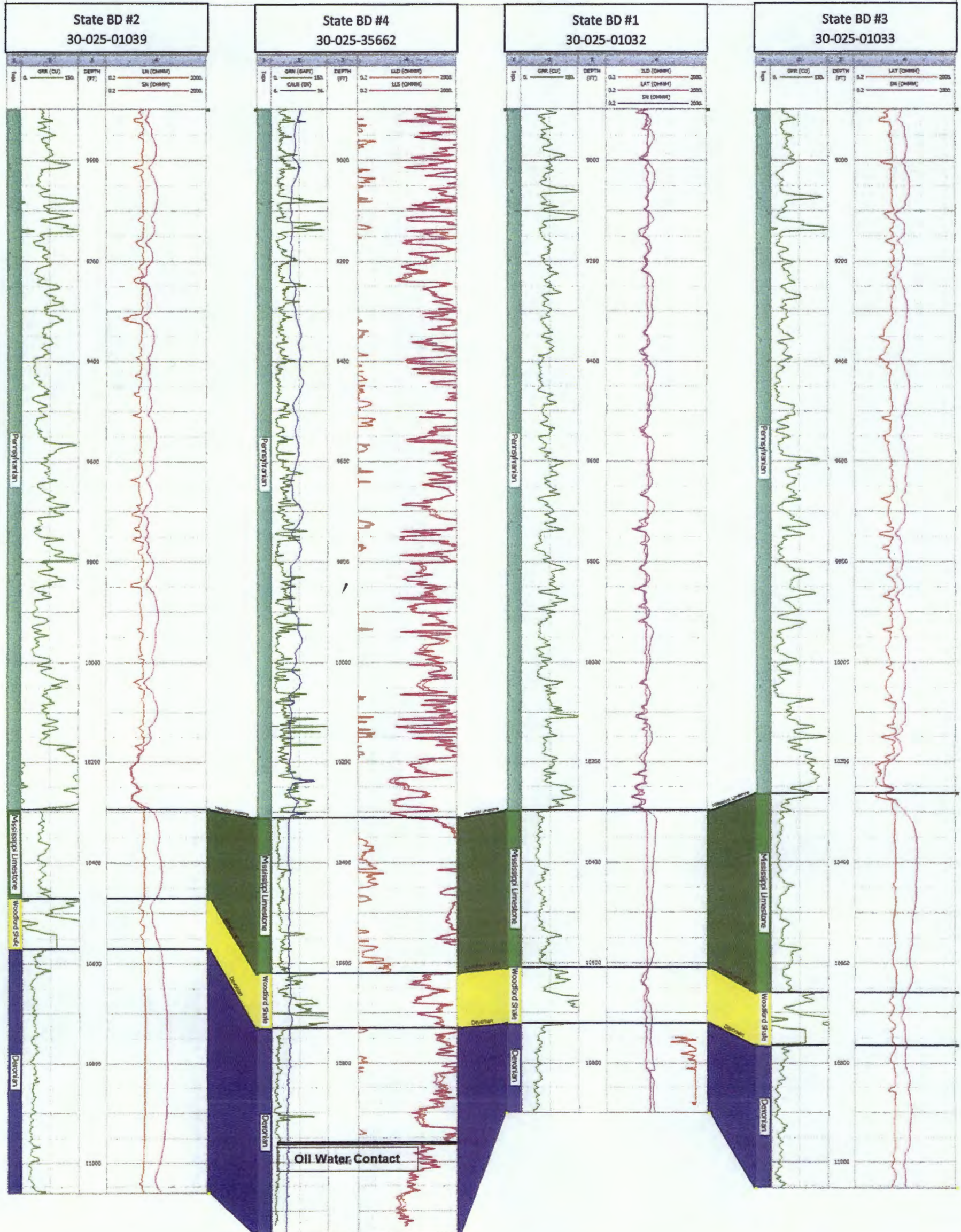
Source - NMOCD GIS Map

0.25 mi

Cross Section #1 (W-E)



Cross Section #2 (N-S)



Cross Section #3

