



RECEIVED OCD

August 17, 2017

2017 AUG 22 P 3:09

Oil Conservation Division  
Attention: Mr. Leonard Lowe  
1220 South Saint Francis Drive  
Santa Fe, New Mexico 87505

Re: Application for Non-standard Proration Unit  
**Ridge Nose Federal Com 1H**  
API # 30-015-42391  
SHL: 200' FSL 2310' FEL (Lot 6), Section 31-T26S-R29E  
BHL: 374' FNL 2300' FEL (Unit B), Section 30-T26S-R29E  
Eddy County, New Mexico

Dear Mr. Lowe:

Pursuant to Division Rule 19.15.15.11, COG Production LLC (COG) respectfully requests administrative approval of a Non-standard Proration Unit for the Copperhead 31 Federal Com 2H well.

COG is seeking approval of the non-standard unit due to an irregular section along the New Mexico/Texas state border that is dedicated to the proration unit for this well. Please refer to the attached C-102 which shows Lot 6 is 40% less than the standard 40 acre unit. No owner notification is required in this case.

Thank you for your consideration of this application. Should you have questions or require further information, please contact me at 575-748-6952 or by email at [bgoodloe@concho.com](mailto:bgoodloe@concho.com).

Sincerely,

Bobbie Goodloe  
Permitting Tech

Enclosures  
cc: OCD Artesia

District I  
1625 N. French Dr., Hobbs, NM 88240  
Phone: (575) 393-6161 Fax: (575) 393-0720  
District II  
811 S. First St., Artesia, NM 88210  
Phone: (575) 748-1283 Fax: (575) 748-9720  
District III  
1000 Rio Brazos Road, Aztec, NM 87410  
Phone: (505) 334-6178 Fax: (505) 334-6170  
District IV  
1220 S. St. Francis Dr., Santa Fe, NM 87505  
Phone: (505) 476-3460 Fax: (505) 476-3462

State of New Mexico  
Energy, Minerals & Natural Resources Department  
OIL CONSERVATION DIVISION  
1220 South St. Francis Dr.  
Santa Fe, NM 87505

Form C-102  
Revised August 1, 2011  
Submit one copy to appropriate  
District Office  
☐ AMENDED REPORT  
As Drilled

WELL LOCATION AND ACREAGE DEDICATION PLAT

<sup>1</sup> API Number <b>30-015-42391</b>	<sup>2</sup> Pool Code <b>8080</b>	<sup>3</sup> Pool Name <b>Brushy Draw; Delaware</b>
<sup>4</sup> Property Code <b>313299</b>	<sup>5</sup> Property Name <b>Ridge Nose Federal Com</b>	
<sup>7</sup> OGRID No. <b>217955</b>	<sup>8</sup> Operator Name <b>COG Production LLC</b>	
		<sup>6</sup> Well Number <b>1H</b>
		<sup>9</sup> Elevation <b>2901'</b>

<sup>10</sup> Surface Location


UL or lot no. <b>6</b>	Section <b>31</b>	Township <b>26S</b>	Range <b>29E</b>	Lot Idn <b>6</b>	Feet from the <b>200</b>	North/South line <b>South</b>	Feet from the <b>2310</b>	East/West line <b>East</b>	County <b>Eddy</b>
---------------------------	----------------------	------------------------	---------------------	---------------------	-----------------------------	----------------------------------	------------------------------	-------------------------------	-----------------------

<sup>11</sup> Bottom Hole Location If Different From Surface

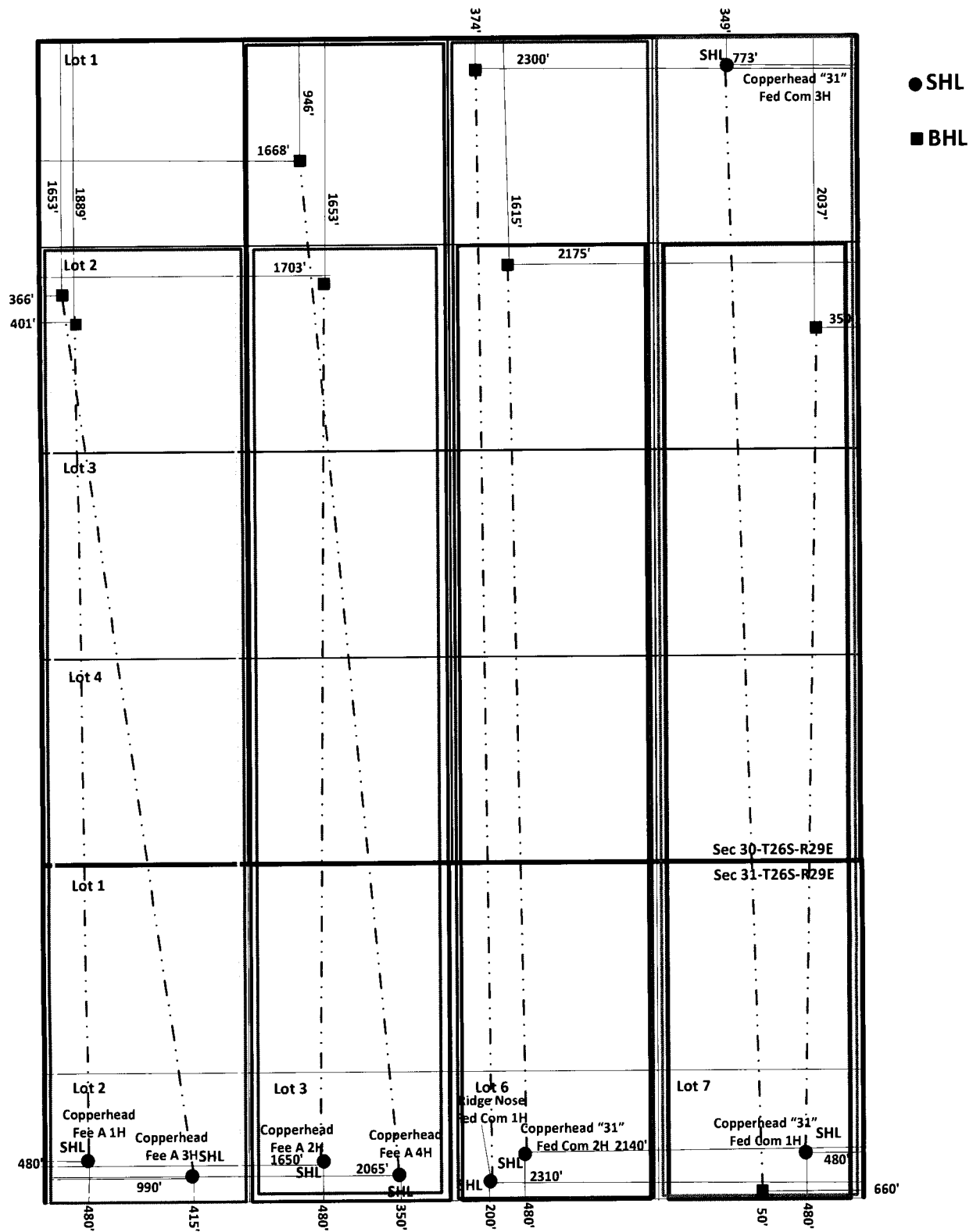
UL or lot no. <b>B</b>	Section <b>30</b>	Township <b>26S</b>	Range <b>29E</b>	Lot Idn <b>B</b>	Feet from the <b>374</b>	North/South line <b>North</b>	Feet from the <b>2300</b>	East/West line <b>East</b>	County <b>Eddy</b>
---------------------------	----------------------	------------------------	---------------------	---------------------	-----------------------------	----------------------------------	------------------------------	-------------------------------	-----------------------

<sup>12</sup> Dedicated Acres <b>226.27</b>	<sup>13</sup> Joint or Infill <b>SEE</b>	<sup>14</sup> Consolidation Code <b>Permitting</b>	<sup>15</sup> Order No.
--	---	---	-------------------------

No allowable will be assigned to this completion until all interests have been consolidated or a non-standard unit has been approved by the division.

16	Lot 1				<sup>17</sup> <b>OPERATOR CERTIFICATION</b> I hereby certify that the information contained herein is true and complete to the best of my knowledge and belief, and that this organization either owns a working interest or unleased mineral interest in the land including the proposed bottom hole location or has a right to drill this well at this location pursuant to a contract with an owner of such a mineral or working interest, or to a voluntary pooling agreement or a compulsory pooling order heretofore entered by the division.  Signature Date <b>8/10/17</b> <b>Bobbie Goodloe</b> Permitting Tech Printed Name <b>bgoodloe@concho.com</b> E-mail Address
	Lot 2				
	Lot 3				
	Lot 4				
	Lot 1			Sec 30-T26S-R29E	<sup>18</sup> <b>SURVEYOR CERTIFICATION</b> I hereby certify that the well location shown on this plat was plotted from field notes of actual surveys made by me or under my supervision, and that the same is true and correct to the best of my belief. Date of Survey Signature and Seal of Professional Surveyor:  <b>REFER TO ORIGINAL PLAT</b> Certificate Number
	Lot 2	Lot 3	Lot 6	Lot 7	
	27.72 acres	27.03 acres	26.34 acres	25.60 acres	

# Copperhead 31 Fed Com, Copperhead Fee A & Ridge Nose Fed Com Wells



30-015-42391 RIDGE NOSE FEDERAL COM #001H [313299]

General Well Information

Operator:	[217955] COG PRODUCTION, LLC			<a href="#">Edit</a>
Status:	Active	Direction:	Horizontal	
Well Type:	Oil	Multi-Lateral:	No	
Work Type:	New	Mineral Owner:	Federal	
		Surface Owner:		
Surface Location:	G-31-26S-29E	Lot: 6	200 FSL	2310 FEL
Lat/Long:	32.0006523,-104.0227509 NAD83			
GL Elevation:	2901			
KB Elevation:				
DF Elevation:				
		Sing/Mult Compl:	Single	
		Potash Waiver:	False	

Well Completions

[8080] BRUSHY DRAW,DELAWARE

[Add](#)  
[Edit](#)

Status: Active  
Bottomhole Location: G-30-26S-29E 374 FNL 2300 FEL  
Lat/Long:  
Acreage: 186.27 31-26S-29E Units: B G(6)  
30-26S-29E Units: G J O

Last Produced: 11/01/2017  
Consolidation Code:  
Production Method: Pumping

Well Test Data

Production Test:	05/10/2015	Test Length:	0 hours
Flowing Tubing Pressure:	0 psi	Flowing Casing Pressure:	0 psi
Choke Size:	0.000 inches	Testing Method:	
Gas Volume:	369.0 MCF	Oil Volume:	273.0 bbls
Gas-Oil Ratio:	0 Kcf / bbl	Oil Gravity:	0.0 Corr. API
Disposition of Gas:		Water Volume:	3640.0 bbls

February 6, 2018

Michael McMillan  
NM Oil Conservation Division  
1220 South Saint Francis Drive  
Santa Fe, NM 87505

RE: NSP Applications in Sec 30 and 31 of T26S-R29E, Eddy County

Mr. McMillan:

In regards to our telephone conversation of this morning please note that COG Operating LLC and its affiliates is the Operator of Record for the N2/N2 of Sec. 30 of Township 26 South Range 29 East.

Please let me know if you need anything further in regards to these applications.

Thank you so much for your help,

Bobbie Goodloe  
Regulatory Analyst  
COG Operating LLC  
575-748-6952