

MAY 17 2018 PM 12:43

Revised March 23, 2017

RECEIVED: 5/17/2018	REVIEWER: mam	TYPE: OLM	APP NO: DMA 18137 46839
------------------------	------------------	--------------	----------------------------

ABOVE THIS TABLE FOR OCD DIVISION USE ONLY

**NEW MEXICO OIL CONSERVATION DIVISION**  
- Geological & Engineering Bureau -  
1220 South St. Francis Drive, Santa Fe, NM 87505



### ADMINISTRATIVE APPLICATION CHECKLIST

THIS CHECKLIST IS MANDATORY FOR ALL ADMINISTRATIVE APPLICATIONS FOR EXCEPTIONS TO DIVISION RULES AND REGULATIONS WHICH REQUIRE PROCESSING AT THE DIVISION LEVEL IN SANTA FE

**Applicant:** COG OPERATING, LLC **OGRID Number:** 229137  
**Well Name:** MONET FEDERAL COM #3H **API:** 30-025-42763  
**Pool:** RED HILLS; UPPER BONE SPRING **Pool Code:** 97900

### SUBMIT ACCURATE AND COMPLETE INFORMATION REQUIRED TO PROCESS THE TYPE OF APPLICATION INDICATED BELOW

**1) TYPE OF APPLICATION:** Check those which apply for [A]

A. Location - Spacing Unit - Simultaneous Dedication

☐ NSL ☐ NSP (PROJECT AREA) ☐ NSP (PRORATION UNIT) ☐ SD

B. Check one only for [I] or [II]

[I] Commingling - Storage - Measurement

☐ DHC ☐ CTB ☐ PLC ☐ PC ☐ OLS ☒ OLM

[II] Injection - Disposal - Pressure Increase - Enhanced Oil Recovery

☐ WFX ☐ PMX ☐ SWD ☐ IPI ☐ EOR ☐ PPR

**2) NOTIFICATION REQUIRED TO:** Check those which apply.

- A. ☐ Offset operators or lease holders
- B. ☒ Royalty, overriding royalty owners, revenue owners
- C. ☐ Application requires published notice
- D. ☐ Notification and/or concurrent approval by SLO
- E. ☒ Notification and/or concurrent approval by BLM
- F. ☐ Surface owner
- G. ☒ For all of the above, proof of notification or publication is attached, and/or,
- H. ☐ No notice required

**FOR OCD ONLY**

☐ Notice Complete  
☐ Application Content Complete

**3) CERTIFICATION:** I hereby certify that the information submitted with this application for administrative approval is **accurate** and **complete** to the best of my knowledge. I also understand that **no action** will be taken on this application until the required information and notifications are submitted to the Division.

**Note:** Statement must be completed by an individual with managerial and/or supervisory capacity.

BOBBIE J GOODLOE

Print or Type Name

Signature

5/17/18  
Date

575-7485-6952

Phone Number

bgoodloe@concho.com

e-mail Address



May 17, 2018

Attn: Michael McMillan  
NM Oil Conservation Division  
1220 South Saint Francis Drive  
Santa Fe, New Mexico 87505

Re: Application for Administrative Approval  
Off-lease Measurement – Oil Only

Dear Mr. McMillan,

COG Operating, LLC, respectfully requests approval for Off-lease Measurement for oil only for the following well:

Monet Federal Com #3H  
API #30-025-42763  
Red Hills; Upper Bone Spring, Shale  
SHL 190' FNL 1980' FWL, Sec. 4-T25S-R33E  
BHL 334' FSL 1638' FWL, Sec. 4-T25S-R33E  
Lea County

Monet Federal Com #8H  
API #30-025-42765  
Red Hills; Upper Bone Spring, Shale  
SHL 190' FNL 2130' FWL, Sec. 4-T25S-R33E  
BHL 330' FSL 2278' FWL, Sec. 4-T25S-R33E  
Lea County

Monet Federal Com #9H  
API #30-025-42766  
Red Hills; Upper Bone Spring, Shale  
SHL 190' FNL 1020' FWL, Sec. 4-T25S-R33E  
BHL 340' FSL 1007' FWL, Sec. 4-T25S-R33E  
Lea County


Monet Federal Com #10H  
API #30-025-42767  
Red Hills; Upper Bone Spring, Shale  
SHL 190' FNL 410' FWL, Sec. 4-T25S-R33E  
BHL 341' FSL 405' FWL, Sec. 4-T25S-R33E  
Lea County

The oil production from these wells may be transported by truck to either the Red Hills Offload Station, located in Unit O, Section 4-T26S-R32E, or the Jal Offload Station, located in Unit D, Section 4-T26S-R37E, Lea County in the event the CTB on lease is over capacity or in the case of battery or pipeline repairs. Oil will remain segregated and will be measured by lact meter when offloading at the Offload Stations. Notices have been sent to all interest owners as required.

Also, please see the attached Administrative Application Checklist, plats for referenced wells, proof of notice to interest owners, diagrams of site facility, maps with lease boundaries showing wells and facility locations.

Thank you for your attention to this matter.

Sincerely,

  
Bobbie Goodloe  
Regulatory Analyst  
Enclosures

**CORPORATE ADDRESS**

ONE CONCHO CENTER | 600 WEST ILLINOIS AVENUE | MIDLAND, TEXAS 79701  
P 432.683.7443 | F 432.683.7441

**ARTESIA WEST OFFICE**

2208 MAIN STREET | ARTESIA, NEW MEXICO 88210  
P 575.748.6940 | F 575.746.2096

District I  
1625 N. French Dr., Hobbs, NM 88240  
Phone: (575) 393-6161 Fax: (575) 393-0720  
District II  
811 S. First St., Artesia, NM 88210  
Phone: (575) 748-1283 Fax: (575) 748-9720  
District III  
1000 Rio Brazos Road, Aztec, NM 87410  
Phone: (505) 334-6178 Fax: (505) 334-6170  
District IV  
1220 S. St. Francis Dr., Santa Fe, NM 87505  
Phone: (505) 476-3460 Fax: (505) 476-3462

State of New Mexico  
Energy, Minerals & Natural Resources Department  
OIL CONSERVATION DIVISION  
1220 South St. Francis Dr.  
Santa Fe, NM 87505

Form C-102  
Revised August 1, 2011  
Submit one copy to appropriate  
District Office

☐ AMENDED REPORT

WELL LOCATION AND ACREAGE DEDICATION PLAT

<sup>1</sup> API Number 30-025-42763	<sup>2</sup> Pool Code 97900	<sup>3</sup> Pool Name Red Hills: Upper Bone Spring, Shale
<sup>4</sup> Property Code 31579	<sup>5</sup> Property Name Monet Federal Com	<sup>6</sup> Well Number 3H
<sup>7</sup> OGRID No. 229137	<sup>8</sup> Operator Name COG Operating, LLC	<sup>9</sup> Elevation 3461.7

<sup>10</sup> Surface Location


UL or lot no.	Section	Township	Range	Lot Idn	Feet from the	North/South line	Feet from the	East/West line	County
3	4	25S	33E		190	North	1980	West	Lea

<sup>11</sup> Bottom Hole Location If Different From Surface

UL or lot no.	Section	Township	Range	Lot Idn	Feet from the	North/South line	Feet from the	East/West line	County
N	4	25S	33E		334	South	1638	West	Lea

<sup>12</sup> Dedicated Acres 159.89	<sup>13</sup> Joint or Infill	<sup>14</sup> Consolidation Code	<sup>15</sup> Order No.
---	-------------------------------	----------------------------------	-------------------------

No allowable will be assigned to this completion until all interests have been consolidated or a non-standard unit has been approved by the division.

<sup>16</sup> 1980'	190'			<sup>17</sup> OPERATOR CERTIFICATION I hereby certify that the information contained herein is true and complete to the best of my knowledge and belief, and that this organization either owns a working interest or unleased mineral interest in the land including the proposed bottom hole location or has a right to drill this well at this location pursuant to a contract with an owner of such a mineral or working interest, or to a voluntary pooling agreement or a compulsory pooling order heretofore entered by the division.  Signature _____ Date 5/17/18 BOBBIE J GOODLOE Printed Name bgoodloe@concho.com E-mail Address
Lot 4 39.91 Ac.	Lot 3 39.93 Ac.	Lot 2 39.95 Ac.	Lot 1 39.97 Ac.	
				<sup>18</sup> SURVEYOR CERTIFICATION I hereby certify that the well location shown on this plat was plotted from field notes of actual surveys made by me or under my supervision, and that the same is true and correct to the best of my belief. REFER TO ORIGINAL PLAT Date of Survey _____ Signature and Seal of Professional Surveyor: _____ Certificate Number _____
1638'	334'			

District I  
1625 N. French Dr., Hobbs, NM 88240  
Phone: (575) 393-6161 Fax: (575) 393-0720  
District II  
811 S. First St., Artesia, NM 88210  
Phone: (575) 748-1283 Fax: (575) 748-9720  
District III  
1000 Rio Brazos Road, Aztec, NM 87410  
Phone: (505) 334-6178 Fax: (505) 334-6170  
District IV  
1220 S. St. Francis Dr., Santa Fe, NM 87505  
Phone: (505) 476-3460 Fax: (505) 476-3462

State of New Mexico  
Energy, Minerals & Natural Resources Department  
OIL CONSERVATION DIVISION  
1220 South St. Francis Dr.  
Santa Fe, NM 87505

Form C-102  
Revised August 1, 2011  
Submit one copy to appropriate  
District Office

☐ AMENDED REPORT

WELL LOCATION AND ACREAGE DEDICATION PLAT

<sup>1</sup> API Number <b>30-025-42765</b>	<sup>2</sup> Pool Code <b>97900</b>	<sup>3</sup> Pool Name <b>RED HILLS; UPPER BONE SPRING, SHALE</b>
<sup>4</sup> Property Code <b>315179</b>	<sup>5</sup> Property Name <b>MONET FEDERAL COM</b>	
<sup>7</sup> OGRID No. <b>229137</b>	<sup>8</sup> Operator Name <b>COG OPERATING, LLC</b>	
		<sup>6</sup> Well Number <b>8H</b>
		<sup>9</sup> Elevation <b>3461.6</b>

<sup>10</sup> Surface Location

UL or lot no. <b>3</b>	Section <b>4</b>	Township <b>25S</b>	Range <b>33E</b>	Lot Idn	Feet from the <b>190</b>	North/South line <b>NORTH</b>	Feet from the <b>2130</b>	East/West line <b>WEST</b>	County <b>LEA</b>
---------------------------	---------------------	------------------------	---------------------	---------	-----------------------------	----------------------------------	------------------------------	-------------------------------	----------------------

<sup>11</sup> Bottom Hole Location If Different From Surface

UL or lot no. <b>N</b>	Section <b>4</b>	Township <b>25S</b>	Range <b>33E</b>	Lot Idn	Feet from the <b>330</b>	North/South line <b>SOUTH</b>	Feet from the <b>2278</b>	East/West line <b>WEST</b>	County <b>LEA</b>
---------------------------	---------------------	------------------------	---------------------	---------	-----------------------------	----------------------------------	------------------------------	-------------------------------	----------------------

<sup>12</sup> Dedicated Acres <b>159.89</b>	<sup>13</sup> Joint or Infill	<sup>14</sup> Consolidation Code	<sup>15</sup> Order No.
--	-------------------------------	----------------------------------	-------------------------

No allowable will be assigned to this completion until all interests have been consolidated or a non-standard unit has been approved by the division.

<sup>16</sup> 	<sup>17</sup> <b>OPERATOR CERTIFICATION</b> <i>I hereby certify that the information contained herein is true and complete to the best of my knowledge and belief, and that this organization either owns a working interest or unleased mineral interest in the land including the proposed bottom hole location or has a right to drill this well at this location pursuant to a contract with an owner of such a mineral or working interest, or to a voluntary pooling agreement or a compulsory pooling order heretofore entered by the division.</i>  Signature Date <b>5/17/18</b> <b>BOBBIE J GOODLOE</b> Printed Name <b>bgoodloe@concho.com</b> E-mail Address	
	<sup>18</sup> <b>SURVEYOR CERTIFICATION</b> <i>I hereby certify that the well location shown on this plat was plotted from field notes of actual surveys made by me or under my supervision, and that the same is true and correct to the best of my belief.</i> <b>REFER TO ORIGINAL PLAT</b> Date of Survey Signature and Seal of Professional Surveyor:	
	Certificate Number	

District I  
1625 N. French Dr., Hobbs, NM 88240  
Phone: (575) 393-6161 Fax: (575) 393-0720  
District II  
811 S. First St., Artesia, NM 88210  
Phone: (505) 748-1283 Fax: (575) 748-9720  
District III  
1000 Rio Brazos Road, Aztec, NM 87410  
Phone: (505) 334-6178 Fax: (505) 334-6170  
District IV  
1220 S. St. Francis Dr., Santa Fe, NM 87505  
Phone: (505) 476-3460 Fax: (505) 476-3462

State of New Mexico  
Energy, Minerals & Natural Resources Department  
OIL CONSERVATION DIVISION  
1220 South St. Francis Dr.  
Santa Fe, NM 87505

Form C-102  
Revised August 1, 2011  
Submit one copy to appropriate  
District Office

☐ AMENDED REPORT

WELL LOCATION AND ACREAGE DEDICATION PLAT

<sup>1</sup> API Number <b>30-025-42766</b>		<sup>2</sup> Pool Code <b>97900</b>	<sup>3</sup> Pool Name <b>RED HILLS; UPPER BONE SPRING, SHALE</b>
<sup>4</sup> Property Code <b>315180</b>	<sup>5</sup> Property Name <b>MONET FEDERAL COM</b>		<sup>6</sup> Well Number <b>9H</b>
<sup>7</sup> OGRID No. <b>229137</b>	<sup>8</sup> Operator Name <b>COG OPERATING, LLC</b>		<sup>9</sup> Elevation <b>3462.8</b>

<sup>10</sup> Surface Location

UL or lot no. <b>4</b>	Section <b>4</b>	Township <b>25S</b>	Range <b>33E</b>	Lot Idn	Feet from the <b>190</b>	North/South line <b>NORTH</b>	Feet from the <b>1020</b>	East/West line <b>WEST</b>	County <b>LEA</b>
---------------------------	---------------------	------------------------	---------------------	---------	-----------------------------	----------------------------------	------------------------------	-------------------------------	----------------------

<sup>11</sup> Bottom Hole Location If Different From Surface

UL or lot no. <b>M</b>	Section <b>4</b>	Township <b>25S</b>	Range <b>33E</b>	Lot Idn	Feet from the <b>340</b>	North/South line <b>SOUTH</b>	Feet from the <b>1007</b>	East/West line <b>WEST</b>	County <b>LEA</b>
---------------------------	---------------------	------------------------	---------------------	---------	-----------------------------	----------------------------------	------------------------------	-------------------------------	----------------------

<sup>12</sup> Dedicated Acres <b>159.89</b>	<sup>13</sup> Joint or Infill	<sup>14</sup> Consolidation Code	<sup>15</sup> Order No.
--	-------------------------------	----------------------------------	-------------------------

No allowable will be assigned to this completion until all interests have been consolidated or a non-standard unit has been approved by the division.

<sup>16</sup> 	<sup>17</sup> OPERATOR CERTIFICATION <i>I hereby certify that the information contained herein is true and complete to the best of my knowledge and belief, and that this organization either owns a working interest or unleased mineral interest in the land including the proposed bottom hole location or has a right to drill this well at this location pursuant to a contract with an owner of such a mineral or working interest, or to a voluntary pooling agreement or a compulsory pooling order heretofore entered by the division.</i>  Signature _____ Date <b>5/17/18</b> <b>BOBBIE J GOODLOE</b> Printed Name <b>bgoodloe@concho.com</b> E-mail Address		
	<sup>18</sup> SURVEYOR CERTIFICATION <i>I hereby certify that the well location shown on this plat was plotted from field notes of actual surveys made by me or under my supervision, and that the same is true and correct to the best of my belief.</i> <b>REFER TO ORIGINAL PLAT</b> Date of Survey _____ Signature and Seal of Professional Surveyor: _____ Certificate Number _____		

District I  
1625 N. French Dr., Hobbs, NM 88240  
Phone: (575) 393-6161 Fax: (575) 393-0720  
District II  
811 S. First St., Artesia, NM 88210  
Phone: (575) 748-1283 Fax: (575) 748-9720  
District III  
1000 Rio Brazos Road, Aztec, NM 87410  
Phone: (505) 334-6178 Fax: (505) 334-6170  
District IV  
1220 S. St. Francis Dr., Santa Fe, NM 87505  
Phone: (505) 476-3460 Fax: (505) 476-3462

State of New Mexico  
Energy, Minerals & Natural Resources Department  
OIL CONSERVATION DIVISION  
1220 South St. Francis Dr.  
Santa Fe, NM 87505

Form C-102  
Revised August 1, 2011  
Submit one copy to appropriate  
District Office

☐ AMENDED REPORT

WELL LOCATION AND ACREAGE DEDICATION PLAT

<sup>1</sup> API Number <b>30-025-42767</b>	<sup>2</sup> Pool Code <b>97900</b>	<sup>3</sup> Pool Name <b>RED HILLS; UPPER BONE SPRING, SHALE</b>
<sup>4</sup> Property Code <b>315180</b>	<sup>5</sup> Property Name <b>MONET FEDERAL COM</b>	
<sup>7</sup> OGRID No. <b>229137</b>	<sup>8</sup> Operator Name <b>COG OPERATING, LLC</b>	
		<sup>6</sup> Well Number <b>10H</b>
		<sup>9</sup> Elevation <b>3465.0</b>

<sup>10</sup> Surface Location

UL or lot no. <b>4</b>	Section <b>4</b>	Township <b>25S</b>	Range <b>33E</b>	Lot Idn	Feet from the <b>190</b>	North/South line <b>NORTH</b>	Feet from the <b>410</b>	East/West line <b>WEST</b>	County <b>LEA</b>
---------------------------	---------------------	------------------------	---------------------	---------	-----------------------------	----------------------------------	-----------------------------	-------------------------------	----------------------

<sup>11</sup> Bottom Hole Location If Different From Surface

UL or lot no. <b>M</b>	Section <b>4</b>	Township <b>25S</b>	Range <b>33E</b>	Lot Idn	Feet from the <b>341</b>	North/South line <b>SOUTH</b>	Feet from the <b>405</b>	East/West line <b>WEST</b>	County <b>LEA</b>
---------------------------	---------------------	------------------------	---------------------	---------	-----------------------------	----------------------------------	-----------------------------	-------------------------------	----------------------

<sup>12</sup> Dedicated Acres <b>159.89</b>	<sup>13</sup> Joint or Infill	<sup>14</sup> Consolidation Code	<sup>15</sup> Order No.
--	-------------------------------	----------------------------------	-------------------------

No allowable will be assigned to this completion until all interests have been consolidated or a non-standard unit has been approved by the division.

<sup>16</sup> 410' SHL 190' 405' BHL 341'				<sup>17</sup> OPERATOR CERTIFICATION <i>I hereby certify that the information contained herein is true and complete to the best of my knowledge and belief, and that this organization either owns a working interest or unleased mineral interest in the land including the proposed bottom hole location or has a right to drill this well at this location pursuant to a contract with an owner of such a mineral or working interest, or to a voluntary pooling agreement or a compulsory pooling order heretofore entered by the division.</i> Signature <u>Bobbie J Goodloe</u> Date <u>5/17/18</u> Printed Name <u>BOBBIE J GOODLOE</u> E-mail Address <u>bgoodloe@concho.com</u>
				<sup>18</sup> SURVEYOR CERTIFICATION <i>I hereby certify that the well location shown on this plat was plotted from field notes of actual surveys made by me or under my supervision, and that the same is true and correct to the best of my belief.</i> REFER TO ORIGINAL PLAT Date of Survey Signature and Seal of Professional Surveyor:
				Certificate Number

# 30-025-42763 MONET FEDERAL COM #003H [315180]

## General Well Information

Operator: [229137] COG OPERATING LLC  
 Status: Active Direction: Horizontal  
 Well Type: Oil Multi-Lateral: No  
 Work Type: New Mineral Owner: Federal  
 Surface Owner: Federal  
 Surface Location: C-04-25S-33E Lot: 3 190 FNL 1980 FWL  
 Lat/Long: 32.16674589 -103.5793788 NAD83  
 GL Elevation: 3462  
 KB Elevation: Sing/Mult Compl: Single  
 DF Elevation: Potash Waiver: False

## [97900] RED HILLS; UPPER BONE SPRING SHALE

Status: Active Last Produced: 03/01/2018  
 Bottomhole Location: N-04-25S-33E 334 FSL 1639 FWL  
 Lat/Long: 32.153139 -103.579992 NAD83  
 Acreage: 159.89 04-25S-33E Units: C(3) F K N  
 DHC: No Consolidation Code:  
 Production Method:

## Well Test Data

Production Test: 05/08/2016 Test Length: 24 hours  
 Flowing Tubing Pressure: 640 psi Flowing Casing Pressure: 0 psi  
 Choke Size: 0.000 inches Testing Method: F  
 Gas Volume: 19010 MCF Oil Volume: 813.0 bbls  
 Gas-Oil Ratio: 2338 Kcf/bbl Oil Gravity: 0.0 Corr. API  
 Disposition of Gas: Other Water Volume: 3886.0 bbls

Earliest Production in OCD Records: 5/2016 Last 3/2018 [Show All Production](#) [Export to Excel](#)

Time Frame	Production				Injection				
	Oil(BBLS)	Gas(MCF)	Water (BBLS)	Days P/I	Water (BBLS)	Co2(MCF)	Gas(MCF)	Other	Pressure

2017

### RED HILLS;UPPER BONE SPRING SHALE

Oct	4161	64829	2273	31	0	0	0	0	0
Nov	2305	55574	2180	30	0	0	0	0	0
Dec	2128	59231	2068	30	0	0	0	0	0

2018

Jan	2061	55065	2949	31	0	0	0	0	0
Feb	1770	53523	2262	28	0	0	0	0	0
Mar	1723	52671	2214	31	0	0	0	0	0

## 30-025-42765 MONET FEDERAL COM #008H [315180]

### General Well Information

Operator: [229137] COG OPERATING LLC  
 Status: Active Direction: Horizontal  
 Well Type: Oil Multi-Lateral: No  
 Work Type: New Mineral Owner: Federal  
 Surface Owner: Federal  
 Surface Location: C-04-25S-33E Lot 3 190 FNL 2130 FWL  
 Lat/Long: 32.15534129,-103.5788919 NAD83  
 GL Elevation: 3462  
 KB Elevation: Sing/Mult Compl: Single  
 DF Elevation: Potash Waiver: False

### [97900] RED HILLS; UPPER BONE SPRING SHALE

Status: Active Last Produced: 03/01/2018  
 Bottomhole Location: N-04-25S-33E 330 FSL 2278 FWL  
 Lat/Long: 32.15311917,-103.57792167 NAD27  
 Acreage: 159.89 04-25S-33E Units: C(3) F K N  
 DHC: No Consolidation Code:  
 Production Method: Flowing

### Well Test Data

Production Test: 05/25/2016 Test Length: 0 hours  
 Flowing Tubing Pressure: 0 psi Flowing Casing Pressure: 0 psi  
 Choke Size: 0.000 inches Testing Method:  
 Gas Volume: 0.0 MCF Oil Volume: 0.0 bbls  
 Gas-Oil Ratio: 0 Kcf / bbl Oil Gravity: 0.0 Corr API  
 Disposition of Gas: Water Volume: 0.0 bbls

Earliest Production in OCD Records: 5/2016 Last 9/2016 [Show All Production](#) [Export to Excel](#)

Time Frame	Production				Injection				
	Oil(BBLS)	Gas(MCF)	Water (BBLS)	Days P/I	Water (BBLS)	Co2(MCF)	Gas(MCF)	Other	Pressure

2017

RED HILLS;UPPER BONE SPRING SHALE									
Oct	4374	48917	3507	31	0	0	0	0	0
Nov	4338	46435	4557	30	0	0	0	0	0
Dec	4253	53924	3707	30	0	0	0	0	0

2018

Jan	4267	53193	3738	31	0	0	0	0	0
Feb	3519	45963	3078	28	0	0	0	0	0
Mar	3665	53158	3277	31	0	0	0	0	0



## 30-025-42766 MONET FEDERAL COM #009H [315180]

### General Well Information

Operator: [229137] COG OPERATING LLC  
 Status: Active Direction: Horizontal  
 Well Type: Oil Multi-Lateral: No  
 Work Type: New Mineral Owner: Federal  
 Surface Owner: Federal  
 Surface Location: D-04-25S-33E Lot: 4 190 FNL 1020 FWL  
 Lat/Long: 32.16634528,-103.582478 NAD83  
 GL Elevation: 3463  
 KB Elevation:  
 DF Elevation: Sing/Mult Compl: Single  
 Potash Waiver: False

### [97900] RED HILLS; UPPER BONE SPRING SHALE

Status: Active Last Produced: 03/01/2018  
 Bottomhole Location: M-04-25S-33E 340 FSL 1007 FWL  
 Lat/Long: 32.153164,-103.582034 NAD27  
 Acreage: 159.91 04-25S-33E Units: D(4) E L M  
 DHC: No Consolidation Code:  
 Production Method: Flowing

### Well Test Data

Production Test: 06/09/2016 Test Length: 0 hours  
 Flowing Tubing Pressure: 0 psi Flowing Casing Pressure: 0 psi  
 Choke Size: 0.000 Inches Testing Method:  
 Gas Volume: 238.0 MCF Oil Volume: 740.0 bbls  
 Gas-Oil Ratio: 0 Kcf / bbl Oil Gravity: 0.0 Corr. API  
 Disposition of Gas: Water Volume: 1125.0 bbls

Earliest Production in OCD Records: 6/2016 Last 3/2018 [Show All Production](#) [Export to Excel](#)

Time Frame	Production				Injection				
	Oil(BBLS)	Gas(MCF)	Water (BBLS)	Days P/I	Water (BBLS)	Co2(MCF)	Gas(MCF)	Other	Pressure

2017

#### RED HILLS;UPPER BONE SPRING SHALE

Oct	2302	52911	2762	31	0	0	0	0	0
Nov	2304	52188	2500	30	0	0	0	0	0
Dec	1901	50288	1794	30	0	0	0	0	0

2018

Jan	2086	47256	3318	31	0	0	0	0	0
Feb	1818	41289	2791	28	0	0	0	0	0
Mar	1801	42349	2982	31	0	0	0	0	0

## 30-025-42767 MONET FEDERAL COM #010H [315180]

### General Well Information

Operator: [229137] COG OPERATING LLO  
 Status: Active Direction: Horizontal  
 Well Type: Oil Multi-Lateral: No  
 Work Type: New Mineral Owner: Federal  
 Surface Owner: Federal  
 Surface Location: D-04-25S-33E Lot 4 190 FNL 410 FWL  
 Lat/Long: 32.16634628,-103.584446 NAD83  
 GL Elevation: 3465  
 KB Elevation: Sing/Mult Compl: Single  
 DF Elevation: Potash Waiver: False

### [97900] RED HILLS; UPPER BONE SPRING SHALE

Status: Active Last Produced: 09/01/2018  
 Bottomhole Location: M-04-25S-33E 341 FSL 405 FWL  
 Lat/Long: 32.1531748,-103.5839773 NAD27  
 Acreage: 159.91 04-25S-33E Units: D(4) E L M  
 DHC: No Consolidation Code:  
 Production Method:

### Well Test Data

Production Test: 06/11/2016 Test Length: 0 hours  
 Flowing Tubing Pressure: 0 psi Flowing Casing Pressure: 0 psi  
 Choke Size: 0.000 inches Testing Method:  
 Gas Volume: 1435.0 MCF Oil Volume: 815.0 bbls  
 Gas-Oil Ratio: 0 Kcf / bbl Oil Gravity: 0.0 Corr. API  
 Disposition of Gas: Water Volume: 1410.0 bbls

### Perforations

Earliest Production in OCD Records: 6/2016 Last 3/2018 [Show All Production](#) ☒ [Export to Excel](#)

Time Frame	Production				Injection				
	Oil(BBLS)	Gas(MCF)	Water (BBLS)	Days P/I	Water (BBLS)	Co2(MCF)	Gas(MCF)	Other	Pressure

2017

RED HILLS;UPPER BONE SPRING SHALE									
Oct	5206	65716	5621	31	0	0	0	0	0
Nov	5635	68472	3500	30	0	0	0	0	0
Dec	5495	64731	4613	30	0	0	0	0	0

2018

Jan	5125	55866	2452	31	0	0	0	0	0
Feb	4520	50012	2163	28	0	0	0	0	0
Mar	4418	41730	2238	31	0	0	0	0	0



# Monet Fed Com Lease

## Legend

- Monet Fed Com #3H - Lucid Gas Sales Meter #14418
- Monet Federal Com

Monet Fed Com #3H - Lucid Gas Sales Meter #14418

Monet Federal Com #3H - SHL

Monet Federal Com #10H - SHL

Monet Federal Com #9H - SHL

Monet Federal Com #8H - SHL





**MONET FEDERAL COM 3H BATTERY**  
NENW SECTION 4, T2SS, R33E, UNIT C  
LEA COUNTY, NM

**WELLS:**  
MONET FEDERAL COM #003H: 30-025-42763  
MONET FEDERAL COM #008H: 30-025-42765  
MONET FEDERAL COM #009H: 30-025-42766  
MONET FEDERAL COM #010H: 30-025-42767

**GAS METERS**

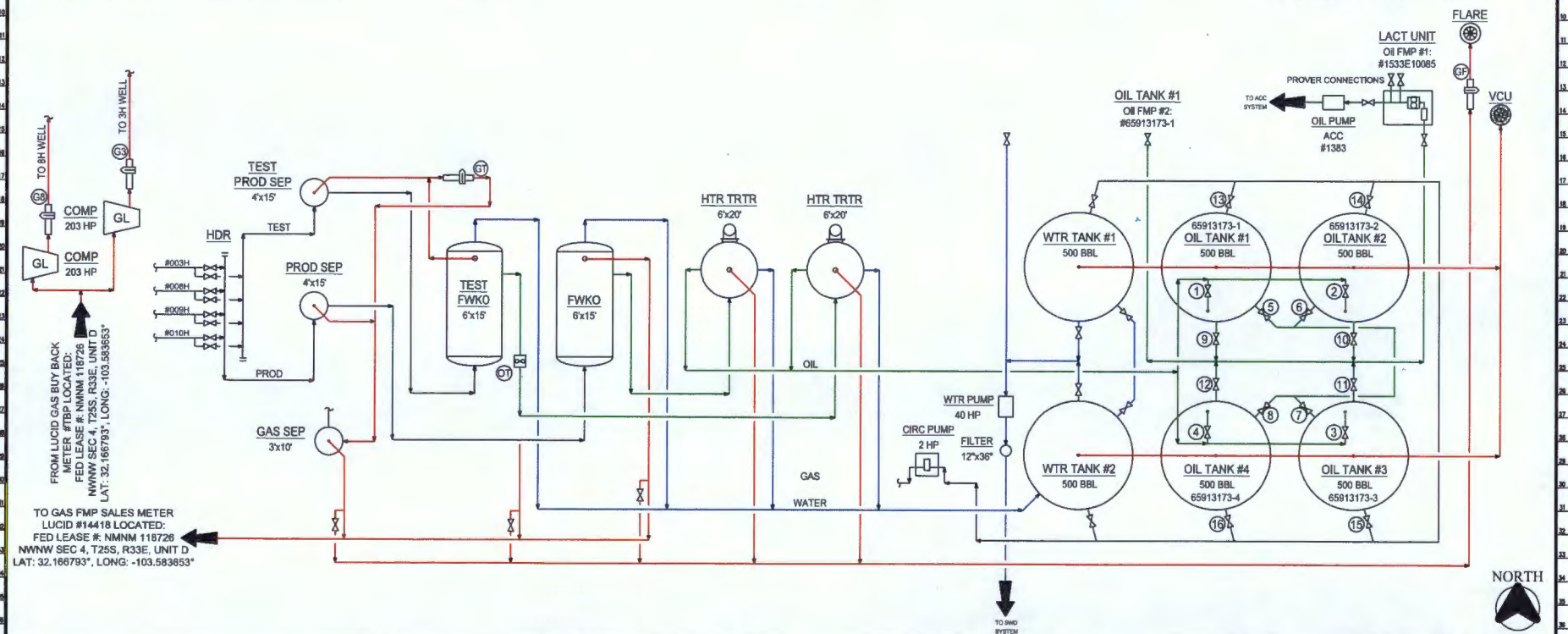
Test Meter:  
(GT): #39022227  
Flare Meter:  
(GF): #39022228  
#3H Gas Lift Meter:  
(G3): #39022230  
#8H Gas Lift Meter:  
(G8): #39022231

**Production Phase - Oil Tank #1**

- Valve 1 open
- Valves 2, 3, and 4 closed
- Valves 5, 6, 7, and 8 open
- Valves 9, 10, 11, and 12 closed
- Valve 13 open
- Valves 14, 15, and 16 closed

**Sales Phase - Oil Tank #1**

- Valve 1 closed
- Valves 2, 3, or 4 open
- Valve 5 closed
- Valves 6, 7, and 8 open
- Valve 9 open
- Valves 10, 11, and 12 closed
- Valve 13 closed
- Valves 14, 15, or 16 open



**NOTES:**

Type of Lease: Federal  
Federal Lease SHL #: NMNM 019859  
CA/Agreement #: NMNM 135942  
Property Code: 315180  
OGRID #: 229137

**Ledger for Site Diagram**

Produced Fluid: —  
Produced Oil: —  
Produced Gas: —  
Produced Water: —

**CONFIDENTIALITY NOTICE**

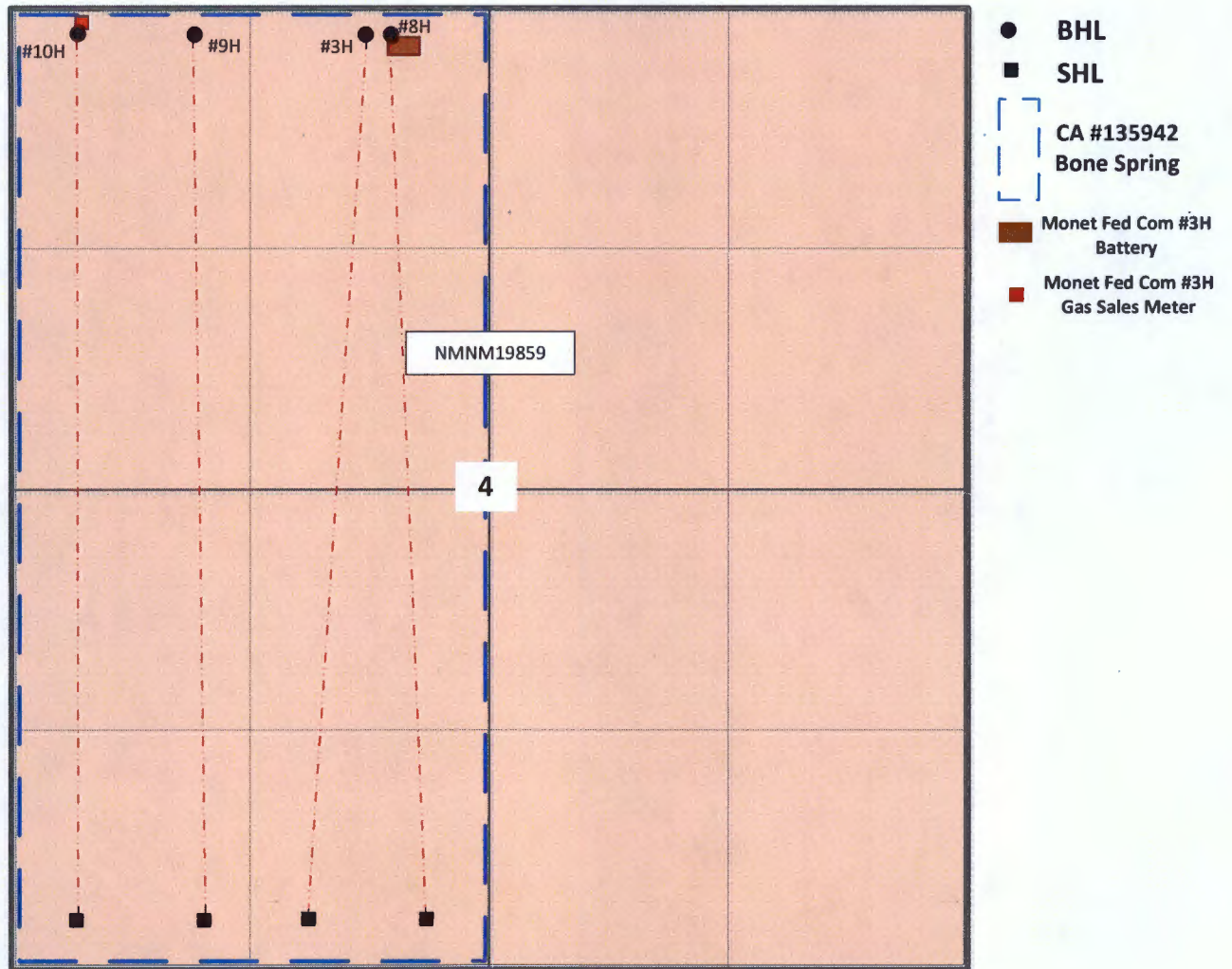
THIS DRAWING IS PROPERTY OF COG OPERATING LLC AND IS LOANED TO THE BORROWER FOR CONFIDENTIAL USE ONLY AND IS SUBJECT TO RETURN UPON REQUEST AND SHALL NOT BE REPRODUCED, COPIED, LENT OR OTHERWISE DISPOSED OF DIRECTLY OR INDIRECTLY FOR ANY PURPOSE OTHER THAN THAT WHICH IT IS SPECIFICALLY FURNISHED.

REFERENCE DRAWINGS		REVISIONS	
NO.	TITLE	NO.	DATE
A	06/01/12	1	ISSUE FOR SITE PERMITTING
B	04/27/18	2	UPDATED FOR MONET FED COM 3H BTY
COG OPERATING LLC SITE SECURITY PLANS LOCATED AT:		ONE CONCHO CENTER 600 WEST ILLINOIS AVENUE MIDLAND, TEXAS 79701	

REVISIONS		BY	
NO.	DATE	CHK.	APP.
1	06/01/12	CRB	
2	04/27/18	CRB	
ENGINEERING RECORD		BY	
		DATE	
		06/01/12	
		06/01/12	
		CHK:	
		APP:	
		APP NO:	
		FACE DCR:	C. BLEDSOE
		OPER DCR:	VARIES
		SCALE:	NONE

**CONCHO**  
NORTHERN DELAWARE BASIN ASSET  
PRODUCTION FACILITIES  
SITE FACILITY DIAGRAM  
MONET FEDERAL COM 3H BATTERY  
LEA COUNTY, NEW MEXICO  
TWN/SP/RANGE  
MULTIPLE  
DNG NO.  
0-1700-81-005  
REV  
8

# Monet Federal Com Lease



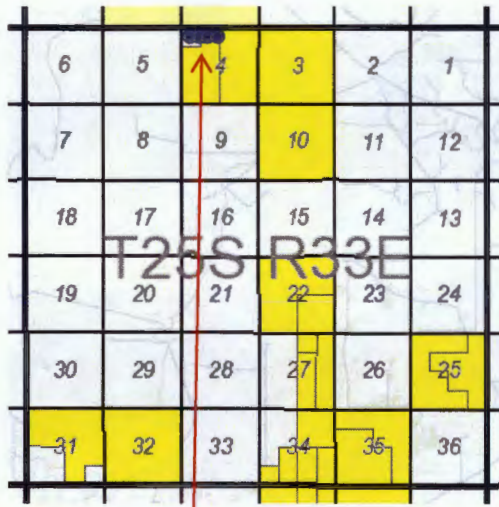
T25S-R33E



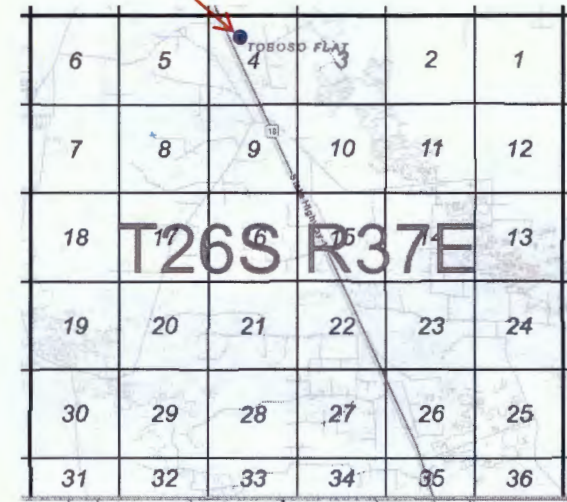
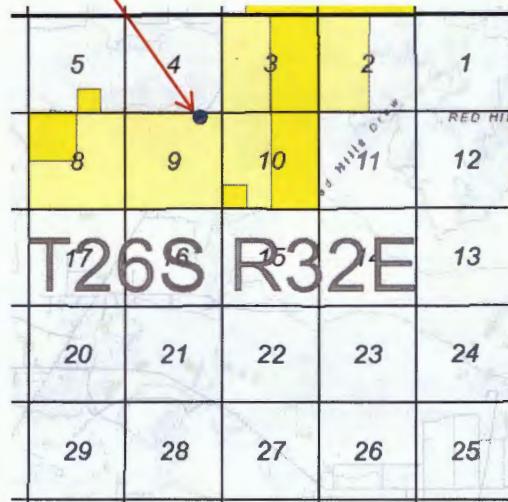
# Monet Federal Com #3H, 8H, 9H & 10H & Red Hills and Jal Offload Station Map

Red Hills Offload Station  
Lea County, NM

Jal Offload Station  
Lea County, NM



Monet Federal Com Lease  
Lea County, NM





Luke Bedrick, CPL

May 16, 2018

State of New Mexico Oil Conservation Division  
1220 South St. Francis Dr.  
Santa Fe, NM 87505

Re: Monet Federal 3H, Monet Federal 8H  
Monet Federal 9H, Monet Federal 10H

To whom it may concern,

This letter serves to notice that COG Operating LLC ("COG") is the operator of the Monet Federal 3H and Monet Federal 8H wells with a 159.89 acre spacing unit comprised of the E2W2 Section 4, T-25-S, R-33-E, Lea County, New Mexico. COG is also the operator of the Monet Federal 9H and Monet Federal 10H wells with a 159.91 acre spacing unit comprised of the W2W2 Section 4, T-25-S, R-33-E, Lea County, New Mexico. The ownership in each of these wells is identical.

Respectfully,

COG OPERATING LLC

A handwritten signature in black ink that reads "Luke Bedrick". The signature is written in a cursive, flowing style.

Luke Bedrick  
Senior Landman

**Monet Federal Com #3H 30-025-42763**

**Monet Federal Com #8H 30-025-42765**

**Monet Federal Com #9H 30-025-42766**

**Monet Federal Com #10H 30-025-42767**

**Application for Off Lease Measurement - Red Hills - Jal Offloads**

**Notification List**

<b><i>Date Sent</i></b>	<b><i>Initials</i></b>	<b><i>Sent Certified Return Receipt to:</i></b>	<b><i>Receipt No.</i></b>
5/17/2018	bjg	AHUJA CHILDREN 2012 LONG TERM TRUST, CORPUS CHRISTI, TX	7017-3040-0000-2540-0722
5/17/2018	bjg	BUREAU OF LAND MANAGEMENT, CARLSBAD, NM	7017-3040-0000-2540-0739
5/17/2018	bjg	CHISOS MINERALS LLC, FORT WORTH, TX	7017-3040-0000-2540-0746
5/17/2018	bjg	COMMERCE FIRST ROYALTIES LLC, DALLAS, TX	7017-3040-0000-2540-0753
5/17/2018	bjg	CONOCO PHILLIPS COMPANY, CHICAGO, IL	7017-3040-0000-2540-0762
5/17/2018	bjg	ESCONDIDO OIL AND GAS LLC, MIDLAND, TX	7017-3040-0000-2540-0777
5/17/2018	bjg	FORTIS MINERAL II LLC, HOUSTON, TX	7017-3040-0000-2540-0784
5/17/2018	bjg	GGM EXPLORATION INC., FORT WORTH, TX	7017-3040-0000-2540-0791
5/17/2018	bjg	JAMES H STONE INC., MENARD, TX	7017-3040-0000-2540-0807
5/17/2018	bjg	MAVEN ROYALTY FUND LP, SHREVEPORT, LA	7017-3040-0000-2540-0814
5/17/2018	bjg	MECO IV LLC, DENVER, CO	7017-3040-0000-2540-0821
5/17/2018	bjg	MONTEGO CAPITAL FUND 3 LTD, MIDLAND, TX	7017-3040-0000-2540-0838
5/17/2018	bjg	R & R ROYALTY LTD., CORPUS CHRISTI, TX	7017-3040-0000-2540-0845
5/17/2018	bjg	RPC MANAGEMENT LTD., ECHO MANAGEMENT LTD., TULSA, OK	7017-3040-0000-2540-0852
5/17/2018	bjg	TD MINERALS LLC, DALLAS, TX	7017-3040-0000-2540-0869
5/17/2018	bjg	TILDEN CAPITAL MINERAL LLC, HOUSTON, TX	7017-3040-0000-2540-0876
5/17/2018	bjg	UNIFIED ASSETS LTD, CORPUS CHRISTI, TX	7017-3040-0000-2540-0883

Mailed by  
Bobbie J Goodloe



**HOBBS NEWS SUN**  
**LEGAL NOTICES**

COG Operating LLC (COG), 2208 West Main, Artesia, New Mexico, 88210, has filed an application seeking administrative approval for Off-lease Measurement of oil only from the New Mexico Oil Conservation Division, for the Monet Federal Com #3H, the surface hole location of the well is located in Lot 3, Section 4, Township 25 South Range 33 East, the Monet Federal Com #8H, the surface hole location of the well is located in Lot 3, Section 4, Township 25 South Range 33 East, the Monet Federal Com #9H, the surface hole location of the well is located in Lot 4, Section 4, Township 25 South Range 33 East and the Monet Federal Com #10H, the surface hole location of the well is located in Lot 4, Section 4, Township 25 South Range 33 East all in Lea County, New Mexico. COG is seeking approval for Off-lease Measurement so that oil production from this well may be transported by truck to the Red Hills Offload Station, located in Unit O, Section 4 Township 26 South Range 32 East, or the Jal Offload Station located in Unit D, Section 4. Township 26 South Range 37 East, Lea County, in the event the Central Tank Battery on lease is over capacity or in the case of battery or pipeline repairs. Oil will remain segregated and will be measured by lact meter when offloading at the Red Hills Station. Any interested party who has an objection to this must give notice in writing to the Oil Conservation Division, 1220 South Saint Francis Street, Santa Fe, New Mexico, 87505, within ten (10) days of this notice. Any interested party with questions or comments may contact Luke Bedrick at (432) 686-3000, [lbedrick@concho.com](mailto:lbedrick@concho.com) or Sean Johnson at (432) 818-2230 [sjohnson@concho.com](mailto:sjohnson@concho.com) at COG Operating LLC, 600 West Illinois, Midland, Texas 79701.

Published in the Hobbs News Sun, Artesia, New Mexico  
\_\_\_\_\_, 2018.