

RECEIVED: <u>5/11/2018</u>	REVIEWER: <u>LMAM</u>	TYPE: <u>PLC</u>	APP NO: <u>PMAM1813429815</u>
-------------------------------	--------------------------	---------------------	----------------------------------

ABOVE THIS TABLE FOR OCD DIVISION USE ONLY

NEW MEXICO OIL CONSERVATION DIVISION
 - Geological & Engineering Bureau -
 1220 South St. Francis Drive, Santa Fe, NM 87505

**ADMINISTRATIVE APPLICATION CHECKLIST**

THIS CHECKLIST IS MANDATORY FOR ALL ADMINISTRATIVE APPLICATIONS FOR EXCEPTIONS TO DIVISION RULES AND
 REGULATIONS WHICH REQUIRE PROCESSING AT THE DIVISION LEVEL IN SANTA FE

Applicant: XTO ENERGY INC. **OGRID Number:** 005380
Well Name: GOLDEN CORRAL FEDERAL #2H **API:** 30-015-44277
Pool: WILLOW LAKE; BONE SPRING, SE **Pool Code:** _____

**SUBMIT ACCURATE AND COMPLETE INFORMATION REQUIRED TO PROCESS THE TYPE OF APPLICATION
 INDICATED BELOW**

1) TYPE OF APPLICATION: Check those which apply for [A]

A. Location – Spacing Unit – Simultaneous Dedication

☐ NSL ☐ NSP (PROJECT AREA) ☐ NSP (PRORATION UNIT) ☐ SD

B. Check one only for [I] or [II]

[I] Commingling – Storage – Measurement

☐ DHC ☒ CTB ☒ PLG ☐ PC ☐ OLS ☐ OLM

[II] Injection – Disposal – Pressure Increase – Enhanced Oil Recovery

☐ WFX ☐ PMX ☐ SWD ☐ IPI ☐ EOR ☐ PPR
2) NOTIFICATION REQUIRED TO: Check those which apply.

- A. ☐ Offset operators or lease holders
 B. ☐ Royalty, overriding royalty owners, revenue owners
 C. ☐ Application requires published notice
 D. ☐ Notification and/or concurrent approval by SLO
 E. ☐ Notification and/or concurrent approval by BLM
 F. ☐ Surface owner
 G. ☒ For all of the above, proof of notification or publication is attached, and/or,
 H. ☐ No notice required

FOR OCD ONLY

- ☐ Notice Complete
☐ Application
 Content
 Complete

- 3) CERTIFICATION:** I hereby certify that the information submitted with this application for administrative approval is **accurate** and **complete** to the best of my knowledge. I also understand that **no action** will be taken on this application until the required information and notifications are submitted to the Division.

Note: Statement must be completed by an individual with managerial and/or supervisory capacity.

PATRICIA DONALD

Print or Type Name

Signature

05/11/2018

Date

4325718220

Phone Number

PATRICIA_DONALD@XTOENERGY.COM

e-mail Address

District I
1625 N. French Drive, Hobbs, NM 88240
District II
811 S. First St., Artesia, NM 88210
District III
1000 Rio Brazos Road, Aztec, NM 87410
District IV
1220 S. St Francis Dr, Santa Fe, NM
87505

State of New Mexico
Energy, Minerals and Natural Resources Department

Form C-107-B
Revised August 1, 2011

OIL CONSERVATION DIVISION
1220 S. St Francis Drive
Santa Fe, New Mexico 87505

Submit the original
application to the Santa Fe
office with one copy to the
appropriate District Office.

APPLICATION FOR SURFACE COMMINGLING (DIVERSE OWNERSHIP)

OPERATOR NAME: XTO ENERGY INC.

OPERATOR ADDRESS: 6401 HOLIDAY HILL ROAD BUILDING #5 MIDLAND TEXAS 79707

APPLICATION TYPE:

☐ Pool Commingling ☒ Lease Commingling ☐ Pool and Lease Commingling ☐ Off-Lease Storage and Measurement (Only if not Surface Commingling)

LEASE TYPE: ☐ Fee ☒ State ☐ Federal

Is this an Amendment to existing Order? ☐ Yes ☐ No If "Yes", please include the appropriate Order No. _____

Have the Bureau of Land Management (BLM) and State Land office (SLO) been notified in writing of the proposed commingling
☐ Yes ☐ No

(A) POOL COMMINGLING

Please attach sheets with the following information

(1) Pool Names and Codes	Gravities / BTU of Non-Commingled Production	Calculated Gravities / BTU of Commingled Production		Calculated Value of Commingled Production	Volumes

(2) Are any wells producing at top allowables? ☐ Yes ☐ No

(3) Has all interest owners been notified by certified mail of the proposed commingling? ☐ Yes ☐ No.

(4) Measurement type: ☐ Metering ☐ Other (Specify)

(5) Will commingling decrease the value of production? ☐ Yes ☐ No If "yes", describe why commingling should be approved

(B) LEASE COMMINGLING

Please attach sheets with the following information

(1) Pool Name and Code.

(2) Is all production from same source of supply? ☐ Yes ☒ No

(3) Has all interest owners been notified by certified mail of the proposed commingling? ☒ Yes ☐ No

(4) Measurement type: ☐ Metering ☒ Other (Specify)

Metered but allocated by welltest.

(C) POOL and LEASE COMMINGLING

Please attach sheets with the following information

(1) Complete Sections A and E.

(D) OFF-LEASE STORAGE and MEASUREMENT

Please attached sheets with the following information

(1) Is all production from same source of supply? ☐ Yes ☒ No

(2) Include proof of notice to all interest owners.

(E) ADDITIONAL INFORMATION (for all application types)

Please attach sheets with the following information

(1) A schematic diagram of facility, including legal location.

(2) A plat with lease boundaries showing all well and facility locations. Include lease numbers if Federal or State lands are involved.

(3) Lease Names, Lease and Well Numbers, and API Numbers.

I hereby certify that the information above is true and complete to the best of my knowledge and belief.

SIGNATURE: Patricia Donald TITLE: REGULATORY ANALYST DATE: 05/11/1988

TYPE OR PRINT NAME PATRICIA DONALD

TELEPHONE NO. 432-571-8220

E-MAIL ADDRESS: PATRICIA_DONALD@XTOENERGY.COM

UNITED STATES
DEPARTMENT OF THE INTERIOR
BUREAU OF LAND MANAGEMENTFORM APPROVED
OMB NO. 1004-0137
Expires: January 31, 2018**SUNDRY NOTICES AND REPORTS ON WELLS**
Do not use this form for proposals to drill or to re-enter an abandoned well. Use form 3160-3 (APD) for such proposals.5. Lease Serial No.
NMNM111533

6. If Indian, Allottee or Tribe Name

7. If Unit or CA/Agreement, Name and/or No.

SUBMIT IN TRIPLICATE - Other instructions on page 28. Well Name and No.
GOLDEN CORRAL FEDERAL 2H9. API Well No.
30-015-4427710. Field and Pool or Exploratory Area
WILLOWLAKE; BONESPRINGSE11. County or Parish, State
EDDY COUNTY, NM1. Type of Well
☒ Oil Well ☐ Gas Well ☐ Other2. Name of Operator
XTO ENERGY INC. Contact: PATRICIA DONALD
E-Mail: PATRICIA_DONALD@XTOENERGY.COM3a. Address
6401 HOLIDAY HILL ROAD BUILDING#5
MIDLAND, TX 797073b. Phone No. (include area code)
Ph: 432-571-82204. Location of Well (Footage, Sec., T., R., M., or Survey Description)
Sec 6 T25S R39E 180FSL 1980FEL

12. CHECK THE APPROPRIATE BOX(ES) TO INDICATE NATURE OF NOTICE, REPORT, OR OTHER DATA

TYPE OF SUBMISSION	TYPE OF ACTION			
<input checked="" type="checkbox"/> Notice of Intent	<input type="checkbox"/> Acidize	<input type="checkbox"/> Deepen	<input type="checkbox"/> Production (Start/Resume)	<input type="checkbox"/> Water Shut-Off
<input type="checkbox"/> Subsequent Report	<input type="checkbox"/> Alter Casing	<input type="checkbox"/> Hydraulic Fracturing	<input type="checkbox"/> Reclamation	<input type="checkbox"/> Well Integrity
<input type="checkbox"/> Final Abandonment Notice	<input type="checkbox"/> Casing Repair	<input type="checkbox"/> New Construction	<input type="checkbox"/> Recomplete	<input checked="" type="checkbox"/> Other
	<input type="checkbox"/> Change Plans	<input type="checkbox"/> Plug and Abandon	<input type="checkbox"/> Temporarily Abandon	Surface Commingling
	<input type="checkbox"/> Convert to Injection	<input type="checkbox"/> Plug Back	<input type="checkbox"/> Water Disposal	

13. Describe Proposed or Completed Operation: Clearly state all pertinent details, including estimated starting date of any proposed work and approximate duration thereof. If the proposal is to deepen directionally or recompleat horizontally, give subsurface locations and measured and true vertical depths of all pertinent markers and zones. Attach the Bond under which the work will be performed or provide the Bond No. on file with BLM/BIA. Required subsequent reports must be filed within 30 days following completion of the involved operations. If the operation results in a multiple completion or recompleat in a new interval, a Form 3160-4 must be filed once testing has been completed. Final Abandonment Notices must be filed only after all requirements, including reclamation, have been completed and the operator has determined that the site is ready for final inspection.

XTO ENERGY INC. RESPECTFULLY SUBMITS THIS SUNDRY NOTICE FOR APPROVAL TO COMMINGLE OIL AND GAS PRODUCTION AT A COMMON TANK BATTERY AND MEASURE PRODUCTION OFF LEASE.

BATTERY IS LOCATED ON THE SAME PAD AS GOLDENCHILD 6 STATE 1 SWD
API:30-15-41846
SECTION 6 TOWNSHIP 25S RANGE 29E 800 FSL & 330 FEL IN EDDY COUNTY.

THE WELLS ASSOCIATED WITH THIS BATTERY ARE:

Cattle Baron Fed 2H 30-015-44281
Golden Corral Fed 2H 30-015-44277
Roadhouse Fed 1H 30-015-44278
Roadhouse Fed 2H 30-015-44279

14. I hereby certify that the foregoing is true and correct.

**Electronic Submission #419708 verified by the BLM Well Information System
For XTO ENERGY INC., sent to the Carlsbad**

Name (Printed/Typed) PATRICIA DONALD

Title REGULATORY ANALYST

Signature (Electronic Submission)

Date 05/10/2018

THIS SPACE FOR FEDERAL OR STATE OFFICE USE

Approved By

Title

Date

Conditions of approval, if any, are attached. Approval of this notice does not warrant or certify that the applicant holds legal or equitable title to those rights in the subject lease which would entitle the applicant to conduct operations thereon.

Office

Title 18 U.S.C. Section 1001 and Title 43 U.S.C. Section 1212, make it a crime for any person knowingly and willfully to make to any department or agency of the United States any false, fictitious or fraudulent statements or representations as to any matter within its jurisdiction.

(Instructions on page 2)

**** OPERATOR-SUBMITTED ** OPERATOR-SUBMITTED ** OPERATOR-SUBMITTED ****

Additional data for EC transaction #419708 that would not fit on the form

32. Additional remarks, continued

Sizzler Fed 2H	30-015-44280
Goldenchild 6 State 001	30-015-38544
Goldenchild 6 State 002	30-015-41732
Goldenchild 6 State 1H	30-015-43003
Golden Corral 6 State 1H	30-015-43251
Cattle Barron State 1H	30-015-43957
Sizzler State 1H	30-015-43956

APPLICATION FOR COMMINGLING PRODUCTION, ALTERNATIVE MEASUREMENT, OFF-LEASE MEASUREMENT AND OFF-LEASE SALES

XTO Energy Inc. is requesting permission to commingle gas production from the below listed leases and formations. Alternative measurement is requested; Electronic Flow Meters at each location will measure production prior to leaving lease. Production will be sold at a point off lease but inside the Goldenchild Unit boundaries.

State/ Federal Wells

Well Name (NMOCD Property Code)	API	Loc ¼, ¼ Sec. Twp. Rng.	Pool (Pool Code)	Lease	Royalty Rate	BOPD	Oil Grav	MCFD	BTU
Cattle Baron Fed 2H	30-015-44281	SWSE, Sec.6, T25S, R29E	Willow Lake; Bone Spring SE(96217)	SH: L062931 (160 acres) BH:NMNM111533 (80 Acres)	12 1/2	1000	46	2100	1350
Golden Corral Fed 2H	30-015-44277	SWSE, Sec.6, T25S, R29E	Willow Lake; Bone Spring SE(96217)	SH: L062931 (160 acres) BH:NMNM111533 (80 Acres)	12 1/2	1000	45	2100	1300
Roadhouse Fed 1H	30-015-44278	SWSE, Sec.6, T25S, R29E	Purple Sage; Wolfcamp (98220)	SH: L062931 (160 acres) BH:NMNM111533 (80 Acres)	12 1/2	1000	48	2100	1400
Roadhouse Fed 2H	30-015-44279	SWSE, Sec.6, T25S, R29E	Purple Sage; Wolfcamp (98220)	SH: L062931 (160 acres) BH:NMNM111533 (80 Acres)	12 1/2	1000	48	2100	1400
Sizzler Fed 2H	30-015-44280	SWSE, Sec.6, T25S, R29E	Purple Sage; Wolfcamp (98220)	SH: L062931 (160 acres) BH:NMNM111533 (80 Acres)	12 1/2	1000	45	2100	1350

100% State wells

Well Name (NMOCD Property Code)	API	Loc ¼, ¼ Sec. Twp. Rng.	Pool (Pool Code)	Lease	Royalty Rate	BOPD	Oil Grav	MCFD	BTU
Goldenchild 6 State 001	30-015-38544	NESE, Sec.6, T25S, R29E	Willow Lake Delaware (64453)	SH:L062931 (40 acres)		25	38	36	1100
Goldenchild 6 State 002	30-015-41732	SWSE, Sec.6, T25S, R29E	Willow Lake Delaware (64453)	SH:L062931 (40 acres)		18	38	44	1100
Goldenchild 6 State 1H	30-015-43003	SESE, Sec.6, T25S, R29E	Willow Lake Delaware (64453)	SH:L062931 (160 acres) BH:VB541 (80 acres)		400	48	1200	1400
Golden Corral 6 State 1H	30-015-43251	SESE, Sec.6, T25S, R29E	Willow Lake; Bone Spring SE (96217)	SH:L062931 (160 acres) BH:VB541 (80 acres)		600	45	1700	1300
Cattle Barron State 1H	30-015-43957	SESE, Sec.6, T25S, R29E	Willow Lake; Bone Spring SE (96217)	SH:L062931 (160 acres) BH:VB541 (80 acres)		-	46	-	1350
Sizzler State 1H	30-015-43956	SESE, Sec.6, T25S, R29E	Purple Sage; Wolfcamp	SH:L062931 (160 acres) BH:VB541 (80 acres)		-	47	-	1350

Signed:
3

Patricia Donald

Title: Regulatory Analyst

Date:

Application to Surface Commingle
BOPCO, LP
Poker Lake Unit 261 Battery
Eddy County, NM

[illegible]

Process Description

OIL:

The Goldenchild battery has four (4), 500 bbl steel oil tanks, one (1) 750 bbl gun barrel tank, and one (1) 500 bbl overflow tank on the location. Eleven (11) wells utilize this location as a common battery with 2 different trains:

Cattle Baron Fed 2H	30-015-44281	SWSE, Sec.6, T25S, R29E
Golden Corral Fed 2H	30-015-44277	SWSE, Sec.6, T25S, R29E
Roadhouse Fed 1H	30-015-44278	SWSE, Sec.6, T25S, R29E
Roadhouse Fed 2H	30-015-44279	SWSE, Sec.6, T25S, R29E
Sizzler Fed 2H	30-015-44280	SWSE, Sec.6, T25S, R29E
Goldenchild 6 State 001	30-015-38544	NESE, Sec.6, T25S, R29E
Goldenchild 6 State 002	30-015-41732	SWSE, Sec.6, T25S, R29E
Goldenchild 6 State 1H	30-015-43003	SESE, Sec.6, T25S, R29E
Golden Corral 6 State 1H	30-015-43251	SESE, Sec.6, T25S, R29E
Cattle Barron State 1H	30-015-43957	SESE, Sec.6, T25S, R29E
Sizzler State 1H	30-015-43956	SESE, Sec.6, T25S, R29E

State Well Train: This header is configured to allow each wells production to flow into test or production separators. Wells sent to test will flow through two (2) individual 3-phase 'test' separators. An allocation factor is obtained for each well using the readings from meters located off the separator. Oil production is allocated daily back to each well using this factor. After test separation, Oil can flow through two heater treater, one for only state wells or sent to the common federal mix heater treater along with the oil from state wells not in test. Oil is sent to either a VRT or gun barrel, then into one of the 500bbl. steel oil tanks. Oil from the tanks is sold through a positive displacement LACT meter (M#8).

Federal/ State Mix Train:

Production from each well with state and federal mix interest will be tested and metered at the wellhead. Production will then flow from well location to VRT and its own heater treater. It will then either flow into the common VRT with the 750 gun bbl or take route straight to tanks. Oil from the tanks is sold through a positive displacement LACT meter (M#8).

GAS:

Federal train and State train will operate in the same manner. After measurement, the gas can recombine into a common line then will go through a gas scrubber then it will split to either a high pressure flare located on the far northeast side of the pad, or on to a sales meter on the

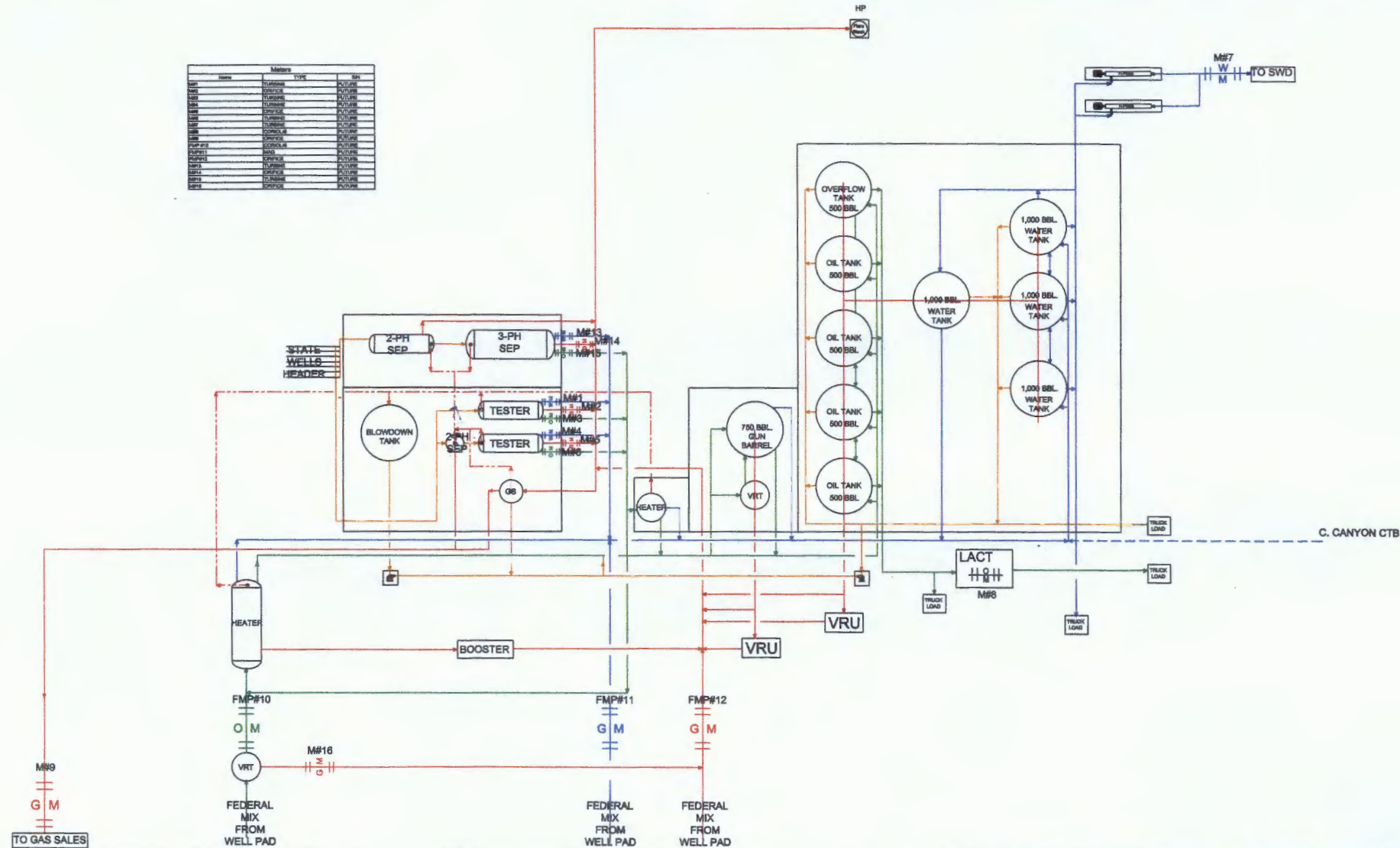
Southwest side of the location. Gas coming off the heater treater will flow into a booster where it can either go to a gas scrubber or VRU.

Vapors from the VRT and oil tanks will flow to one of two VRU's then to a gas scrubber where it will go to either sales or high pressure flare stack.

WATER:

Water flows from either 3 phase separator or tester into four (4) 1,000 bbl water tanks. It will either go to one of 2 H pumps and then a SWD (M#7) or truckload.

Meters		
NAME	TYPE	SIZE
M#1	TEMPERATURE	24" INCH
M#2	TEMPERATURE	24" INCH
M#3	TEMPERATURE	24" INCH
M#4	TEMPERATURE	24" INCH
M#5	TEMPERATURE	24" INCH
M#6	TEMPERATURE	24" INCH
M#7	TEMPERATURE	24" INCH
M#8	TEMPERATURE	24" INCH
M#9	TEMPERATURE	24" INCH
M#10	TEMPERATURE	24" INCH
M#11	TEMPERATURE	24" INCH
M#12	TEMPERATURE	24" INCH
M#13	TEMPERATURE	24" INCH
M#14	TEMPERATURE	24" INCH
M#15	TEMPERATURE	24" INCH
M#16	TEMPERATURE	24" INCH
M#17	TEMPERATURE	24" INCH
M#18	TEMPERATURE	24" INCH
M#19	TEMPERATURE	24" INCH
M#20	TEMPERATURE	24" INCH
M#21	TEMPERATURE	24" INCH
M#22	TEMPERATURE	24" INCH
M#23	TEMPERATURE	24" INCH
M#24	TEMPERATURE	24" INCH
M#25	TEMPERATURE	24" INCH
M#26	TEMPERATURE	24" INCH
M#27	TEMPERATURE	24" INCH
M#28	TEMPERATURE	24" INCH
M#29	TEMPERATURE	24" INCH
M#30	TEMPERATURE	24" INCH
M#31	TEMPERATURE	24" INCH
M#32	TEMPERATURE	24" INCH
M#33	TEMPERATURE	24" INCH
M#34	TEMPERATURE	24" INCH
M#35	TEMPERATURE	24" INCH
M#36	TEMPERATURE	24" INCH
M#37	TEMPERATURE	24" INCH
M#38	TEMPERATURE	24" INCH
M#39	TEMPERATURE	24" INCH
M#40	TEMPERATURE	24" INCH
M#41	TEMPERATURE	24" INCH
M#42	TEMPERATURE	24" INCH
M#43	TEMPERATURE	24" INCH
M#44	TEMPERATURE	24" INCH
M#45	TEMPERATURE	24" INCH
M#46	TEMPERATURE	24" INCH
M#47	TEMPERATURE	24" INCH
M#48	TEMPERATURE	24" INCH
M#49	TEMPERATURE	24" INCH
M#50	TEMPERATURE	24" INCH
M#51	TEMPERATURE	24" INCH
M#52	TEMPERATURE	24" INCH
M#53	TEMPERATURE	24" INCH
M#54	TEMPERATURE	24" INCH
M#55	TEMPERATURE	24" INCH
M#56	TEMPERATURE	24" INCH
M#57	TEMPERATURE	24" INCH
M#58	TEMPERATURE	24" INCH
M#59	TEMPERATURE	24" INCH
M#60	TEMPERATURE	24" INCH
M#61	TEMPERATURE	24" INCH
M#62	TEMPERATURE	24" INCH
M#63	TEMPERATURE	24" INCH
M#64	TEMPERATURE	24" INCH
M#65	TEMPERATURE	24" INCH
M#66	TEMPERATURE	24" INCH
M#67	TEMPERATURE	24" INCH
M#68	TEMPERATURE	24" INCH
M#69	TEMPERATURE	24" INCH
M#70	TEMPERATURE	24" INCH
M#71	TEMPERATURE	24" INCH
M#72	TEMPERATURE	24" INCH
M#73	TEMPERATURE	24" INCH
M#74	TEMPERATURE	24" INCH
M#75	TEMPERATURE	24" INCH
M#76	TEMPERATURE	24" INCH
M#77	TEMPERATURE	24" INCH
M#78	TEMPERATURE	24" INCH
M#79	TEMPERATURE	24" INCH
M#80	TEMPERATURE	24" INCH
M#81	TEMPERATURE	24" INCH
M#82	TEMPERATURE	24" INCH
M#83	TEMPERATURE	24" INCH
M#84	TEMPERATURE	24" INCH
M#85	TEMPERATURE	24" INCH
M#86	TEMPERATURE	24" INCH
M#87	TEMPERATURE	24" INCH
M#88	TEMPERATURE	24" INCH
M#89	TEMPERATURE	24" INCH
M#90	TEMPERATURE	24" INCH
M#91	TEMPERATURE	24" INCH
M#92	TEMPERATURE	24" INCH
M#93	TEMPERATURE	24" INCH
M#94	TEMPERATURE	24" INCH
M#95	TEMPERATURE	24" INCH
M#96	TEMPERATURE	24" INCH
M#97	TEMPERATURE	24" INCH
M#98	TEMPERATURE	24" INCH
M#99	TEMPERATURE	24" INCH
M#100	TEMPERATURE	24" INCH



Revision	Description of Change	Date	By
0	ISSUED FOR REVIEW_2017 UPGRADE	12-18-17	AE

GOLDENCHILD
 CENTRAL TANK BATTERY
 EDDY COUNTY, NEW MEXICO
CTB/SWD_WC-BS PLOT PLAN
 XTO - PB - GCHL - OTBAT - PLOT - 000 - 1918 - 4e

Company	Division	Field	Facility	Doc Type	Equip	Doc #	Revision

CARLSBAD CURRENT-ARGUS

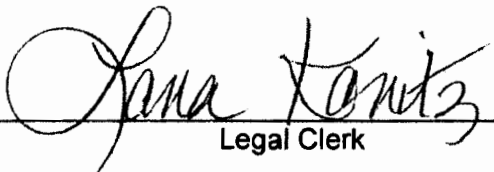
AFFIDAVIT OF PUBLICATION

Ad No.
0001245143

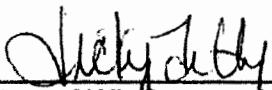
XTO ENERGY, INC.
500 W. ILLINOIS
SUITE 100
MIDLAND TX 79701

I, a legal clerk of the **Carlsbad Current-Argus**, a newspaper published daily at the City of Carlsbad, in said county of Eddy, state of New Mexico and of general paid circulation in said county; that the same is a duly qualified newspaper under the laws of the State wherein legal notices and advertisements may be published; that the printed notice attached hereto was published in the regular and entire edition of said newspaper and not in supplement thereof on the date as follows, to wit:

05/01/18


Legal Clerk

Subscribed and sworn before me this
1st of May 2018.


State of WI, County of Brown
NOTARY PUBLIC

9-19-21
My Commission Expires

Ad#:0001245143
P O :
of Affidavits :0.00

LEGAL NOTICE

XTO Energy Inc. is applying to surface commingle the produ to a central tank battery located in Unit Letter P: 800 feet 330 feet from the east line section 6, T25S, R29E in Eddy Cou

The eleven wells, details and locations are the following:

Well Name	API	
Cattle Baron Fed 2H	30-015-44281	L
Golden Corral Fed 2H	30-015-44277	S
Roadhouse Fed 1H	30-015-44278	S
Roadhouse Fed 2H	30-015-44279	S
Sizzler Fed 2H	30-015-44280	S
Goldenchild 6 State 001	30-015-38544	N
Goldenchild 6 State 002	30-015-41732	S
Goldenchild 6 State 1H	30-015-43003	S
Golden Corral 6 State 1H	30-015-43251	S
Cattle Barron State 1H	30-015-43957	S
Sizzler State 1H	30-015-43956	S

Affected parties were notified via certified letter.
Addresses for parties listed below could not be located:
Desert Rock Resources, LP.
Crown Oil Partners, LP.

Interested parties must file objections or requests for hearir Oil Conservation Division, 1220 South Saint Francis Dr., San 20 days. Additional information can be obtained by contacti Energy Inc., 500 W. Illinois Ave. Suite 100, Midland, Texas 7 432-571-8220.



LEGAL NOTICE

XTO Energy Inc. is applying to surface commingle the production of eleven oil wells to a central tank battery located in Unit Letter P: 800 feet from the south line and 330 feet from the east line section 6, T25S, R29E in Eddy County, New Mexico.

The eleven wells, details and locations are the following:

Well Name	API	Loc ¼, ¼ Sec. Twp. Rng.
Cattle Baron Fed 2H	30-015-44281	SWSE, Sec. 6, T25S, R29E
Golden Corral Fed 2H	30-015-44277	SWSE, Sec. 6, T25S, R29E
Roadhouse Fed 1H	30-015-44278	SWSE, Sec. 6, T25S, R29E
Roadhouse Fed 2H	30-015-44279	SWSE, Sec. 6, T25S, R29E
Sizzler Fed 2H	30-015-44280	SWSE, Sec. 6, T25S, R29E
Goldenchild 6 State 001	30-015-38544	NESE, Sec. 6, T25S, R29E
Goldenchild 6 State 002	30-015-41732	SWSE, Sec. 6, T25S, R29E
Goldenchild 6 State 1H	30-015-43003	SESE, Sec. 6, T25S, R29E
Golden Corral 6 State 1H	30-015-43251	SESE, Sec. 6, T25S, R29E
Cattle Barron State 1H	30-015-43957	SESE, Sec. 6, T25S, R29E
Sizzler State 1H	30-015-43956	SESE, Sec. 6, T25S, R29E

Affected parties were notified via certified letter.

Addresses for parties listed below could not be located:

Desert Rock Resources, LP.

Crown Oil Partners, LP.

Interested parties must file objections or requests for hearing with the New Mexico Oil Conservation Division, 1220 South Saint Francis Dr., Santa Fe, NM 87505 within 20 days. Additional information can be obtained by contacting Patricia Donald, XTO Energy Inc., 500 W. Illinois Ave. Suite 100, Midland, Texas 79701. Phone number is 432-571-8220.

DEPARTMENT OF THE INTERIOR
BUREAU OF LAND MANAGEMENT
CASE RECORDATION
(MASS) Serial Register Page

Run Date/Time: 4/26/2018 8:44 AM

Page 1 Of 2

01 12-22-1987;101STAT1330;30USC181 ET SEQ
Case Type 312021: O&G LSE COMP PD -1987
Commodity 459: OIL & GAS
Case Disposition: AUTHORIZED

Total Acres:
360.000

Serial Number
NMNM 111533

Serial Number: NMNM-- 111533

Name & Address						Int Rel	% Interest
CHEVRON USA INC	6301 DEAUVILLE	MIDLAND	TX	797062964	LESSEE	100.000000000	
CHEVRON USA INC	6301 DEAUVILLE	MIDLAND	TX	797062964	OPERATING RIGHTS	0.000000000	

Serial Number: NMNM-- 111533

Mer	Twp	Rng	Sec	S	Type	Nr	Suff	Subdivision	District/ Field Office	County	Mgmt Agency
23	0240S	0290E	031		ALIQ			S2NE,SENW,E2SW,NWSE;	CARLSBAD FIELD OFFICE	EDDY	BUREAU OF LAND MGMT
23	0240S	0290E	032		ALIQ			NESW,S2SW;	CARLSBAD FIELD OFFICE	EDDY	BUREAU OF LAND MGMT

Relinquished/Withdrawn Lands

Serial Number: NMNM-- 111533

Serial Number: NMNM-- 111533

Act Date	Act Code	Action Txt	Action Remarks	Pending Off
01/20/2004	299	PROTEST FILED		
01/20/2004	387	CASE ESTABLISHED	200401064;	
01/21/2004	143	BONUS BID PAYMENT RECD	\$720.00;	
01/21/2004	191	SALE HELD		
01/21/2004	267	BID RECEIVED	\$135000.00;	
02/04/2004	143	BONUS BID PAYMENT RECD	\$134280.00;	
04/27/2004	298	PROTEST DISMISSED		
04/28/2004	237	LEASE ISSUED		
04/28/2004	974	AUTOMATED RECORD VERIF	LR	
05/01/2004	496	FUND CODE	05;145003	
05/01/2004	530	RLTY RATE - 12 1/2%		
05/01/2004	868	EFFECTIVE DATE		
05/24/2004	120	APPEAL FILED	FOREST GUARDIANS	
05/24/2004	963	CASE MICROFILMED/SCANNED		
07/19/2004	138	STAY DENIED		
10/28/2004	899	TRF OF ORR FILED	1	
09/08/2006	119	APPEAL DISMISSED	IBLA 2004-236	
02/12/2008	650	HELD BY PROD - ACTUAL	/1/	

NO WARRANTY IS MADE BY BLM FOR USE OF THE DATA FOR PURPOSES NOT INTENDED BY BLM

DEPARTMENT OF THE INTERIOR
BUREAU OF LAND MANAGEMENT
CASE RECORDATION
(MASS) Serial Register Page

Run Date/Time: 4/26/2018 8:44 AM

Page 2 Of 2

Serial Number: NMNM-- 111533
Pending Off

Act Date	Act Code	Action Txt	Action Remarks
08/13/2008	643	PRODUCTION DETERMINATION	/1/
08/13/2008	658	MEMO OF 1ST PROD-ACTUAL	/1/#2H DIAMND 31 FED;
11/27/2012	140	ASGN FILED	CHESAPEAK/CHEVRON U;1
11/27/2012	932	TRF OPER RGTS FILED	CHESAPEAK/CHEVRON U;1
04/18/2013	140	ASGN FILED	RUBICON O/CHESAPEAK;1
05/10/2013	139	ASGN APPROVED	EFF 12/01/12;
05/10/2013	974	AUTOMATED RECORD VERIF	LBO
05/15/2013	139	ASGN APPROVED	EFF 12/01/12;
05/15/2013	933	TRF OPER RGTS APPROVED	EFF 12/01/12;
10/28/2013	899	TRF OF ORR FILED	1
10/28/2013	899	TRF OF ORR FILED	2
08/18/2016	246	LEASE COMMITTED TO CA	NMNM136965;
09/19/2016	246	LEASE COMMITTED TO CA	NMNM136963;
12/15/2016	658	MEMO OF 1ST PROD-ACTUAL	/3/NMNM136965;
12/22/2016	658	MEMO OF 1ST PROD-ACTUAL	/2/NMNM136963;
04/27/2017	643	PRODUCTION DETERMINATION	/2/
04/28/2017	643	PRODUCTION DETERMINATION	/3/

Line Number	Remark Text
0002	STIPULATIONS ATTACHED TO LEASE:
0003	SENM-S-11 (NO SURFACE OCCUPANCY)
0004	- PECOS RIVER/CANYON COMPLEX: SEC.32: NESW
0005	SENM-S-18 (STREAMS, RIVERS & FLOODPLAINS):
0006	SEC.32: S2SW
0007	BONDED OPERATOR AFMSS 5/15/13
0008	CHESAPEAKE OPERATING ESB000159 150K;



Date: February 23, 2018

To: Patricia Donald

From: Jim Madison

Re: **Forecasted Declines: Goldenchild Battery/Wells**
SHL in 25S 29E Sec 6
Eddy County, New Mexico

Two of the four wells currently active producers at Goldenchild - - - Goldenchild 1 & 2 (Bell Canyon vertical wells) have been on production four (4) years or greater and have a current monthly decline of 5% or less. This puts them in Range 3 of their decline, as specified in Hearing Order R-14299. Therefore, the recommended testing frequency for commingling per the Well Test Method for these wells will be at least once a month for 24 hrs.

The other two producers at Goldenchild are the Goldenchild 6 State 1H (Wolf A) and the Golden Corral 6 State 1H (2nd Bone Spring). Active production is one (1) year or greater for each well with a current monthly decline of less than 5%. This puts them in Range 3 of their decline, as specified in Hearing Order R-14299. Therefore, the recommended testing frequency for commingling per the Well Test Method for these wells will be at least once a month for 24 hrs.

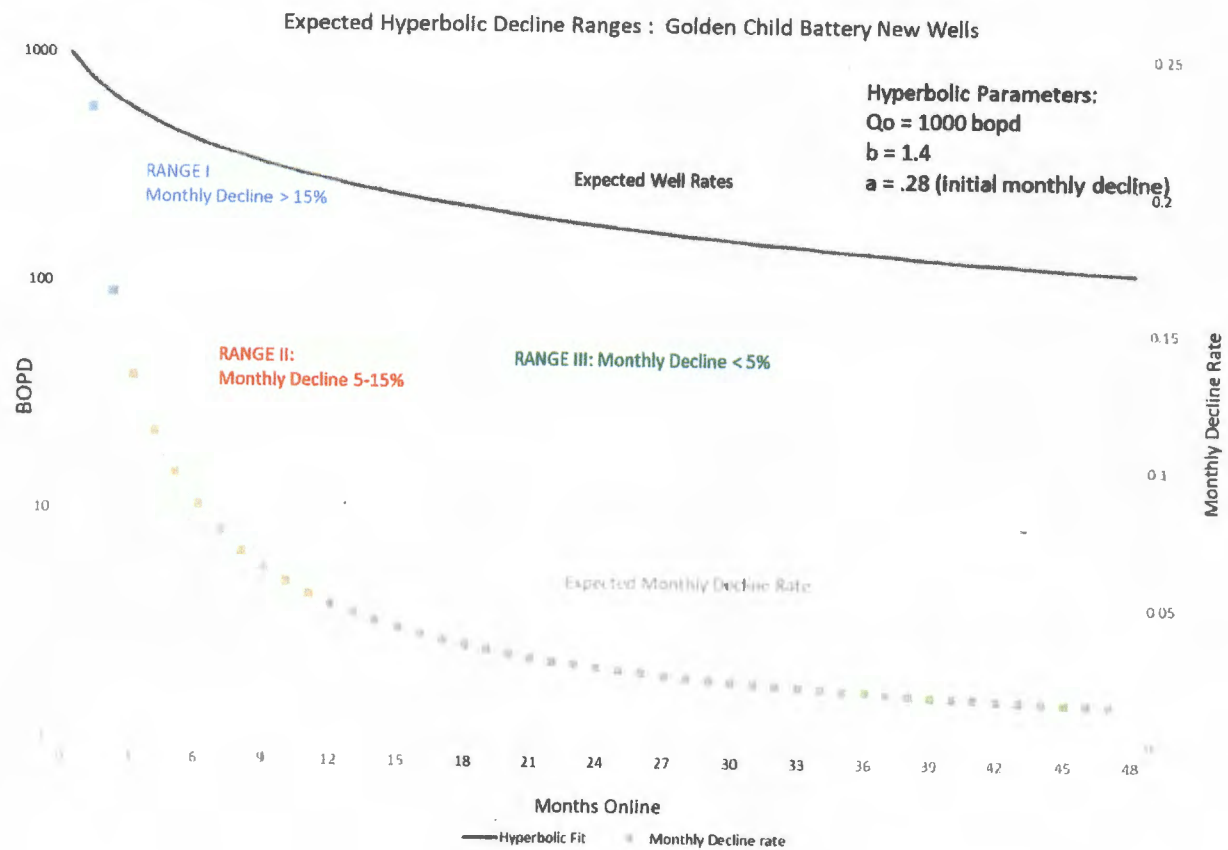
Also, the following wells have not yet produced, placing all seven (7) wells in the Range 1 production phase for two (2) months after peak production. The recommended Well Test Frequency for this phase is at least one (1) Test per week, with a 24 hour test duration, for two (2) months. The wells will then follow with one (1) Test per month with the same 24 hour test duration. Average type curve for this set is shown on page 2.

- | | |
|-------------------------|--------------|
| 1) Cattle Baron Fed 2H | 30-015-44281 |
| 2) Golden Corral Fed 2H | 30-015-44277 |
| 3) Roadhouse Fed 1H | 30-015-44278 |
| 4) Roadhouse Fed 2H | 30-015-44279 |
| 5) Sizzler Fed 2H | 30-015-44280 |
| 6) Cattle Baron Fed 1H | 30-015-43957 |
| 7) Sizzler Fed 1H | 30-015-43956 |

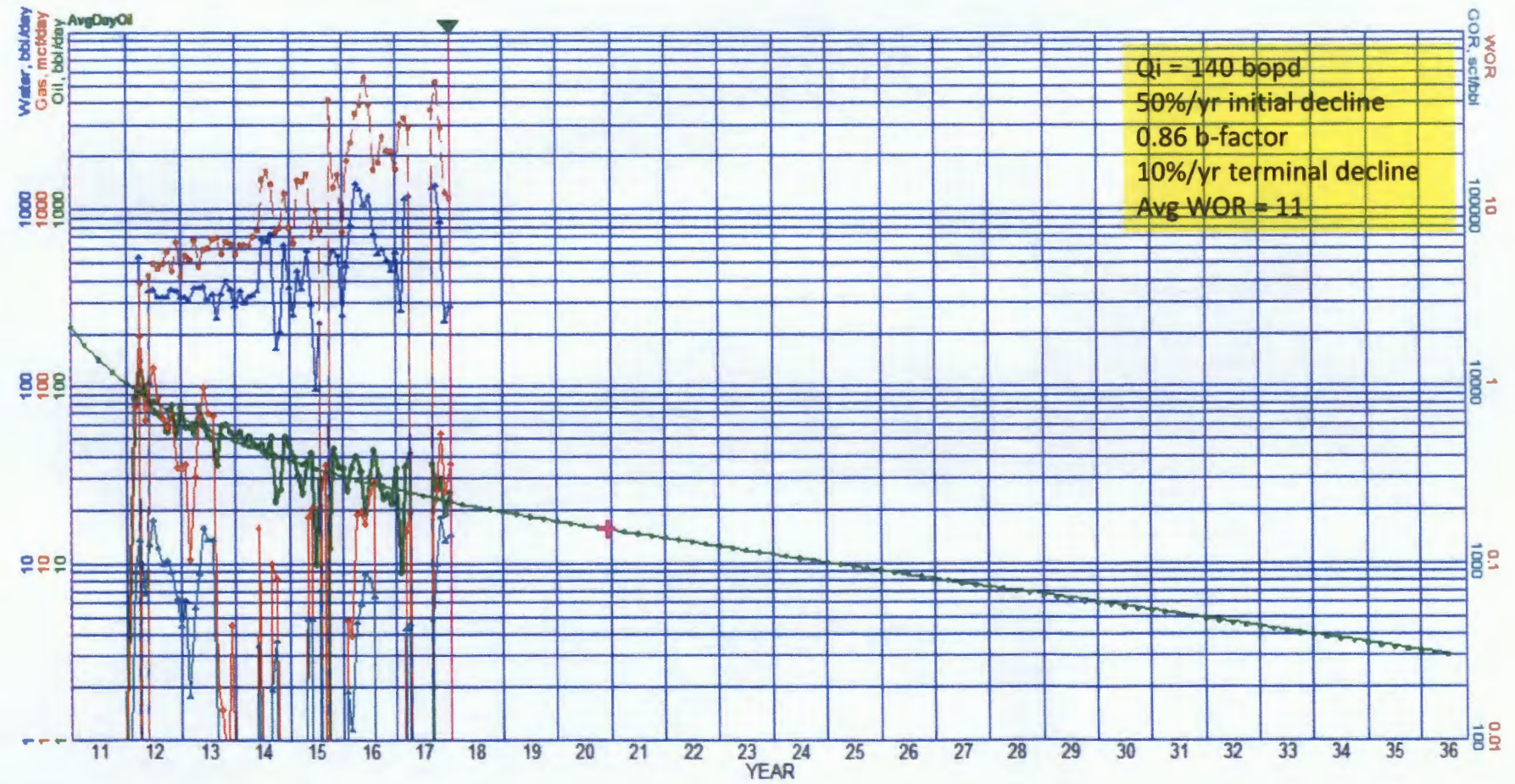
*Production provided
for these wells*

Jim Madison
Reservoir Engineering Advisor
Delaware Basin Subsurface Team

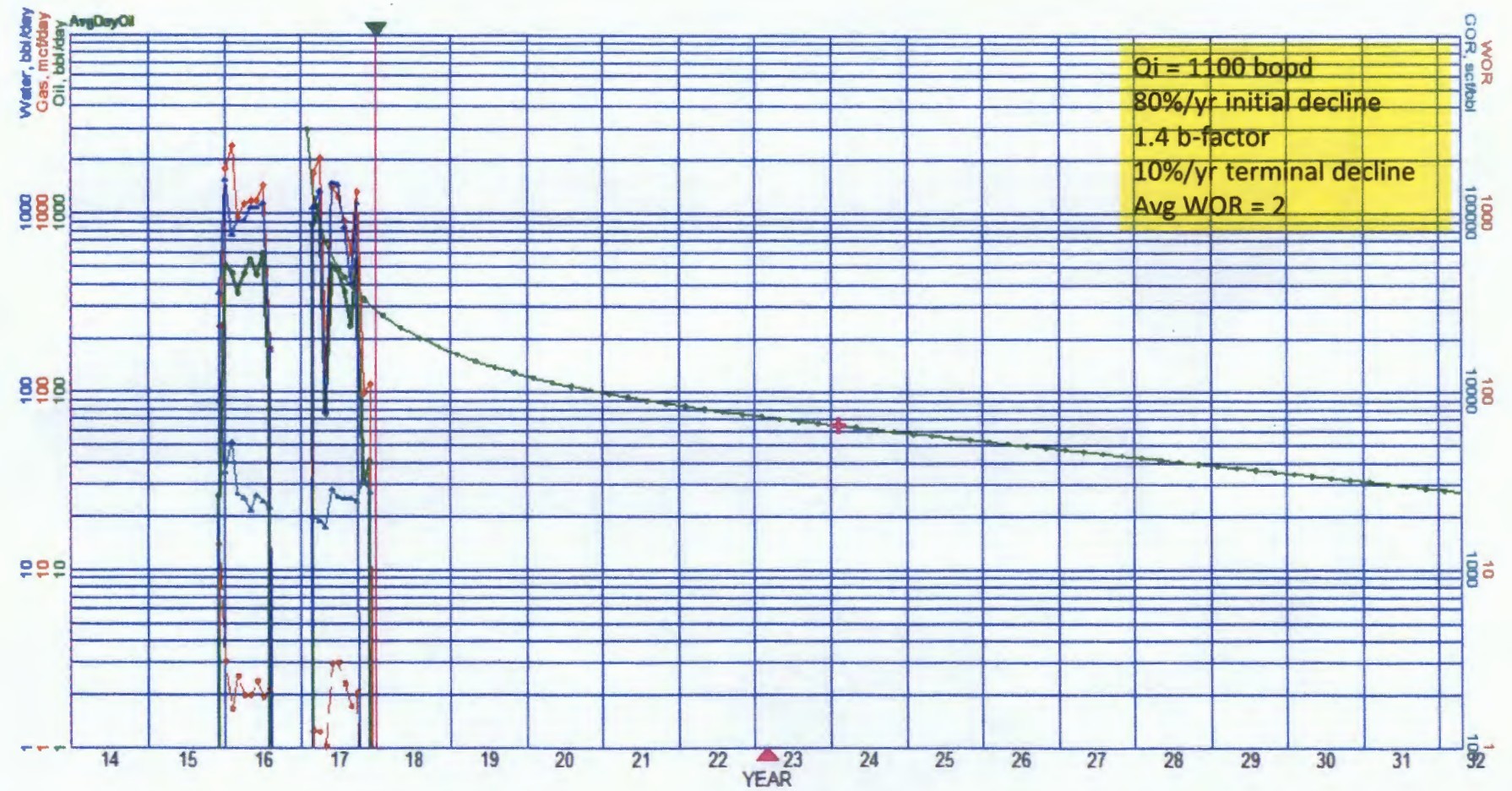
Avg Forecasted Decline: Goldenchild Non-Producing Set



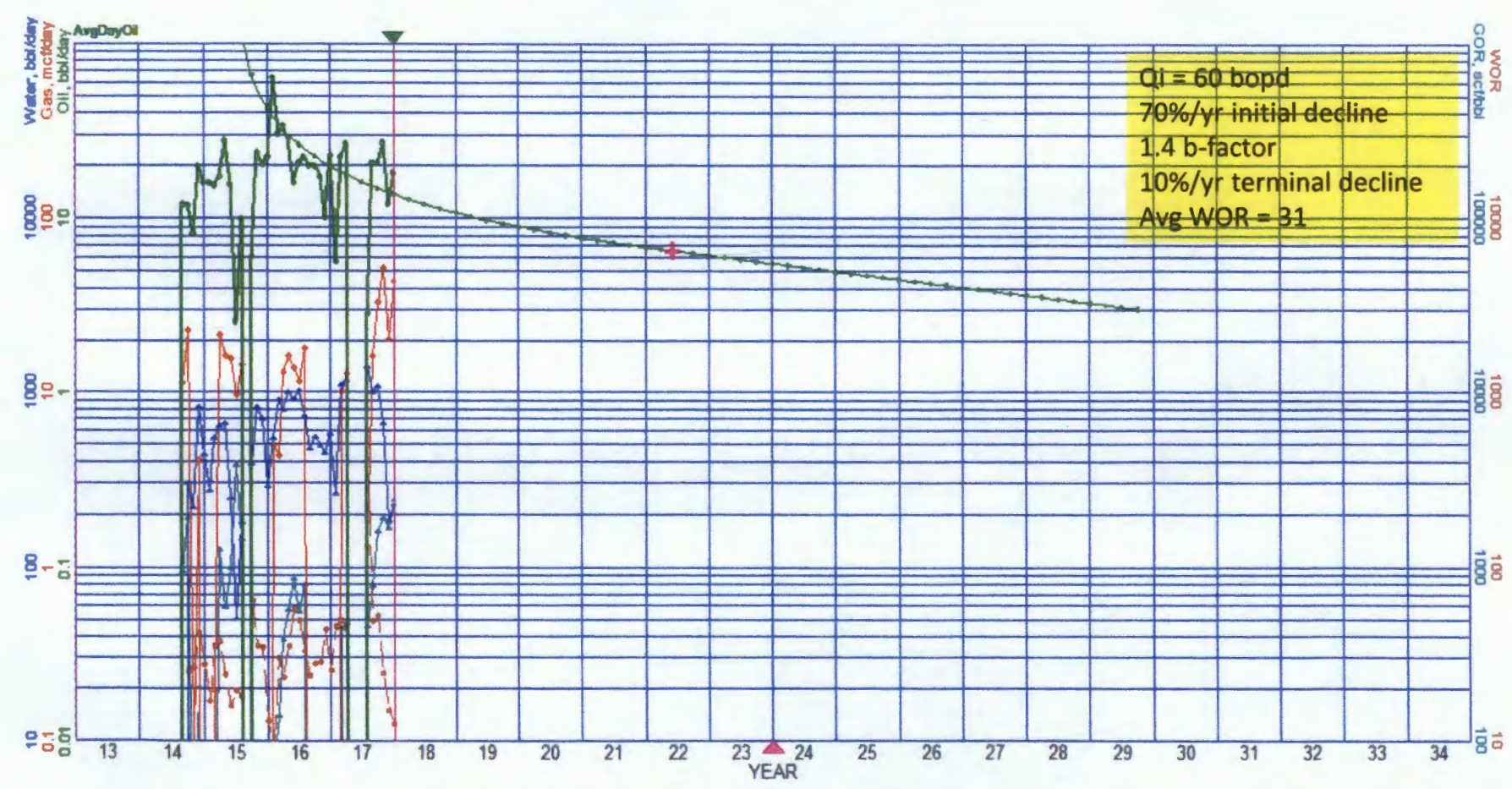
Goldenchild 6 State 1 Bell Canyon Vertical



Goldenchild 6 State 1H
Wolfcamp A: 6.6k, 1500 ppf, 300' stages



Goldenchild 6 State 2
Bell Canyon Vertical





6401 Holiday Hill Road
Building 5
Midland, TX 79707

May 11, 2018

RE: Application for Surface Commingling, off lease sales, storage and measurement
Eddy Co., Texas

To Whom It May Concern:

XTO Energy Inc. is forwarding you the following information concerning the application to commingle New Mexico State wells. Approval to measure, store, and sell the production, at a point outside the lease boundary is also included in this request for wells with interest associated with the Bureau of Land Management.

The complete application contains several pages; included with this notice is information to identify the wells, their location, and the location of the facility. If you would like a complete copy of the application or have any questions please feel free to contact me at 432-571-8220.

Sincerely,

A handwritten signature in black ink that reads 'Patricia Donald'. The signature is fluid and cursive, with the first and last names being clearly legible.

Patricia Donald
Regulatory Analyst

Attachments

TRACKING #

7013 1710 0001 7955 7244
7013 1710 0001 7955 7251
7013 1710 0001 7955 7268
7013 1710 0001 7955 7275
7013 1710 0001 7955 7282

POSTED LEGAL AD

7013 1710 0001 7955 7299

POSTED LEGAL AD

7013 1710 0001 7955 7305
7013 1710 0001 7955 7312

APPLYING OPERATOR

7013 1710 0001 7955 7329
7013 1710 0001 7955 7336
7013 1710 0001 7955 7343
7013 1710 0001 7955 7350
7013 1710 0001 7955 7367
7013 1710 0001 7955 7374
7013 1710 0001 7955 7381
7013 1710 0001 7955 7398
7013 1710 0001 7955 7404
7013 1710 0001 7955 7411
7013 1710 0001 7955 7428
7013 1710 0001 7955 7435
7013 1710 0001 7955 7442
7013 1710 0001 7955 7459
7013 1710 0001 7955 7466
7013 1710 0001 7955 7473
7013 1710 0001 7955 7480
7013 1710 0001 7955 7497
7013 1710 0001 7955 7503
7013 1710 0001 7955 7510
7013 1710 0001 7955 7527
7013 1710 0001 7955 7534
7013 1710 0001 7955 7541
7013 1710 0001 7955 7558
7013 1710 0001 7955 7565
7013 1710 0001 7955 7572
7013 1710 0001 7955 7589
7013 1710 0001 7955 7596
7013 1710 0001 7955 7602
7013 1710 0001 7955 7619
7013 1710 0001 7955 7626

NANAME

BAGAM LTD
BF ALBRIGHTON
CHARLES D RAY
CHEVRON USA INC
CHEVRON USA INC
CROWN OIL PARTNERS, LP
CRUMP FAMILY PARTNERSHIP, LTD.
DESERT ROCK RESOURCES, LP
EOG RESOURCES, INC.
ERNIE GORDI
EXXONMOBIL CORPORATION - XTO
G.E. ROGERS, LLC
GUINN FAMILY PROPERTIES LTD
H M BETTIS INC
I-43 ASSOCIATES, INC.
JOHN SALEH CHARITABLE FDN
L E OPPERMANN
LANELL JOY HONEYMAN
LES R HONEYMAN
LESLIE ROBERT HONEYMAN TRUST
LIBERTY ENERGY CORPORATION
MARK J MOURNE JR
MEWBOURNE OIL COMPANY
MICHAEL D HAYES
M J MOURNE & LADONNA S MOURNE
MOBIL PROD TX&N MX INC-HQ
MORRIS E SCHERTZ
NEW MEXICO COMMISSIONER OF
OXY USA INC
QUINTESA ROAYALTY LP
RKI EXPLORATION & PRODUCTION
ROLLA R HINKLE II
SCOTT & VALERIE BRANSON
SONIC OIL & GAS LP
Stillwater Investment
STOVALL ENERGY LTD
TARPON ENGINEERING COOPERATION
TBO OIL & GAS, LLC
T C ENERGY, LLC
THE ALLAR COMPANY
THOMAS R SMITH
W T BOYLE & CO

BAGAM LTD PO BOX 1110 GRAHAM, TX 764500000	BF ALBRIGHTON PO BOX 266 GRAHAM, TX 764500000	CHARLES D RAY 4 CHURCHILL WAY MIDLAND, TX 79705-1804
CHEVRON USA INC PO BOX 730436 DALLAS, TX 753730436	CHEVRON USA INC PO BOX 2100 HOUSTON, TX 77252	CROWN OIL PARTNERS, LP NO ADDRESS ON FILE.
CRUMP FAMILY PARTNERSHIP, LTD. PO BOX 50820 MIDLAND, TX 79710	DESERT ROCK RESOURCES, LP NO ADDRESS ON FILE.	EOG RESURCES, INC. 5509 CHAMPIONS DR. MIDLAND, TX 79706
ERNIE GORDI 3211 ROSEMEADE DRIVE #1312 FORT WORTH, TX 76116	EXXONMOBIL CORPORATION - XTO 810 HOUSTON ST FORT WORTH, TX 761026298	G.E. ROGERS, LLC PO BOX 1424 GRAHAM, TX 76450
GUINN FAMILY PROPERTIES LTD PO BOX 1298 GRAHAM, TX 764503068	H M BETTIS INC PO BOX 1240 GRAHAM, TX 764501240	I-43 ASSOCIATES, INC. 903 DOUGLAS AVE. MIDLAND, TX 79701-5069
JOHN SALEH CHARITABLE FDN WELLS FARGO BANK NA TTEE PO BOX 40909 AUSTIN, TX 787040000	L E OPPERMAN 500 W TEXAS AVE SUITE 830 MIDLAND, TX 797014276	LANELL JOY HONEYMAN 406 SKYWOOD CIR MIDLAND, TX 797052914
LES R HONEYMAN 406 SKYWOOD CIR MIDLAND, TX 79705	LESLIE ROBERT HONEYMAN TRUST LANELL JOY HONEYMAN TTEE 406 SKYWOOD CIR MIDLAND, TX 797050000	LIBERTY ENERGY CORPORATION PO BOX 418109 BOSTON, MA 02241-8109
MARK J MOURNE JR 21263 W. SYCAMRE DR. BUCKEYE, AZ 85396	MEWBOURNE OIL COMPANY 500 W. TEXAS SUITE 1020 MIDLAND, TX 79702	MICHAEL D HAYES & KATHRYN A HAYES, TRUSTEES HAYES REVOCABLE TRUST 3608 MEADOWRIDGE LN. MIDLAND, TX 79707
M J MOURNE & LADONNA S MOURNE MARK J MOURNE JR & LADONNA S MOURNE TTEES 21263 W SYCAMORE DR BUCKEYE, AZ 853960000	MOBIL PROD TX&N MX INC-HQ 810 HOUSTON ST FORT WORTH, TX 761020000	MORRIS E SCHERTZ PO BOX 2588 ROSWELL, NM 882022588
NEW MEXICO COMMISSIONER OF PUBLIC LANDS NEW MEXICO STATE LAND OFFICE 810 HOUSTON ST STE 2000 FORT WORTH, TX 761026223	OXY USA INC ATTN PRIMARY OIL TEAM PO BOX 27570 HOUSTON, TX 772277570	QUINTESA ROAYALTY LP 508 WEST WALL STE 500. MIDLAND, TX 79701

RKI EXPLORATION & PRODUCTION 25061 NETWORK PL CHICAGO, IL 606731250	ROLLA R HINKLE II 303 COAL DR RUIDOSO, NM 883457714	SCOTT & VALERIE BRANSON 1501 MOUNTAINN SHADOW DR. CARLSBAD, NM 88220-4156
SONIC OIL & GAS LP PO BOX 1240 GRAHAM, TX 764507240	Stillwater Investment 6403 Sequoia MIDLAND, TX 79707	STOVALL ENERGY LTD PO BOX 10 GRAHAM, TX 764500000
TARPON ENGINEERING COOPERATION 7812 W. HIGHWAY 80 MIDLAND, TX 79706-2805	TBO OIL & GAS, LLC P.O BOX 10502 MIDLAND, TX 79702	T C ENERGY, LLC PO BOX 1464 GRAHAM, TX 76450
THE ALLAR COMPANY PO BOX 1567 GRAHAM, TX 764500000	THOMAS R SMITH 5705 PINEHURST DR FARMINGTON, NM 874020000	W T BOYLE & CO PO BOX 57 GRAHAM, TX 764500057