

|                               |                          |                    |                                   |
|-------------------------------|--------------------------|--------------------|-----------------------------------|
| RECEIVED:<br><u>8/09/2018</u> | REVIEWER:<br><u>MyAm</u> | TYPE:<br><u>PL</u> | APP NO:<br><u>PMAM18221 53000</u> |
|-------------------------------|--------------------------|--------------------|-----------------------------------|

ABOVE THIS TABLE FOR OCD DIVISION USE ONLY

**NEW MEXICO OIL CONSERVATION DIVISION**  
 - Geological & Engineering Bureau -  
 1220 South St. Francis Drive, Santa Fe, NM 87505

**ADMINISTRATIVE APPLICATION CHECKLIST**

THIS CHECKLIST IS MANDATORY FOR ALL ADMINISTRATIVE APPLICATIONS FOR EXCEPTIONS TO DIVISION RULES AND  
 REGULATIONS WHICH REQUIRE PROCESSING AT THE DIVISION LEVEL IN SANTA FE

**Applicant:** Kaiser-Francis Oil Company **OGRID Number:** 12361  
**Well Name:** Bell Lake Unit South #219H and 3 others **API:** 30-025-44020  
**Pool:** Bell Lake Bone Spring South / Bell Lake Wolfcamp South **Pool Code:** 98264 / 98266

**SUBMIT ACCURATE AND COMPLETE INFORMATION REQUIRED TO PROCESS THE TYPE OF APPLICATION  
 INDICATED BELOW**

**1) TYPE OF APPLICATION:** Check those which apply for [A]

A. Location – Spacing Unit – Simultaneous Dedication

☐ NSL☐ NSP (PROJECT AREA)☐ NSP (PRORATION UNIT)☐ SD

B. Check one only for [I] or [II]

[I] Commingling – Storage – Measurement

☐ DHC☒ CTB☐ PLC☒ PC☐ OLS☐ OLM

[II] Injection – Disposal – Pressure Increase – Enhanced Oil Recovery

☐ WFX☐ PMX☐ SWD☐ IPI☐ EOR☐ PPR**2) NOTIFICATION REQUIRED TO:** Check those which apply.A. ☐ Offset operators or lease holdersB. ☐ Royalty, overriding royalty owners, revenue ownersC. ☐ Application requires published noticeD. ☒ Notification and/or concurrent approval by SLOE. ☐ Notification and/or concurrent approval by BLMF. ☐ Surface ownerG. ☐ For all of the above, proof of notification or publication is attached, and/or,H. ☐ No notice required**FOR OCD ONLY**☐ Notice Complete☐ Application  
Content  
Complete

**3) CERTIFICATION:** I hereby certify that the information submitted with this application for administrative approval is **accurate** and **complete** to the best of my knowledge. I also understand that **no action** will be taken on this application until the required information and notifications are submitted to the Division.

**Note: Statement must be completed by an individual with managerial and/or supervisory capacity.**

Charlotte Van Valkenburg

Print or Type Name

C. Van Valkenburg  
 Signature

Date

8/8/18918-491-4314

Phone Number

Charlotv@kfoc.net

e-mail Address

## APPLICATION FOR SURFACE POOL/LEASE COMMINGLING

Kaiser Francis Oil Company ("KFOC") respectfully requests approval to surface pool/lease commingle oil and gas from the following wells and future wells encompassing the acreage listed below:

|   | API          | WELL NAME            | WELL # | LOCATION              | POOL CODE/NAME                                       | STATUS                 | *OIL API/BOPD | *GAS BTU/MCFD |
|---|--------------|----------------------|--------|-----------------------|--|------------------------|---------------|---------------|
| 1 | 30-025-44020 | Bell Lake Unit South | 219H   | L – Section 1-24S-33E | Bell Lake; Bone Spring, South Pool (Pool Code 98264) | Drilled, not completed | n/a           | n/a           |
| 2 | 30-025-44021 | Bell Lake Unit South | 319H   | L – Section 1-24S-33E | Bell Lake, Bone Spring, South Pool (Pool Code 98264) | Drilled, not completed | n/a           | n/a           |
| 3 | 30-025-44526 | Bell Lake Unit South | 220H   | L- Section 1-24S-33E  | Bell Lake, Bone Spring, South Pool (Pool Code 98264) | Drilled, not completed | n/a           | n/a           |
| 4 | 30-025-44022 | Bell Lake Unit South | 419H   | L-Section 1-24S-33E   | Bell Lake, Wolfcamp South Pool (Pool Code 98266)     | Drilled, not completed | n/a           | n/a           |

**\*Projected, pending completion**

### GENERAL INFORMATION:

State Lease NM E-5076 covers 640 acres, being all of Section 36, Township 23S, Range 33 East, Lea County, NM

State Lease NM E-5898 covers 955.30 acres, being N/2 & SE/4 Section 1-24S-33E & N/2 & SW/4 Section 6-24S-34E, Lea County, NM

State Lease NM E-490 covers 160 acres, being SW/4 Section 1-24S-33E

State Lease NM E-5829 covers 160 acres, being SE/4 Section 6-24S-34E

State Lease NM E-5896 covers 634.80 acres, being all of Section 31-23S-34E, Lea County, NM

Ownership is identical in each of the subject wells

The CTB to service the subject wells is located in the SW/4 Sec.1-24S-33E, Lea County, NM.

An application to comingle production from the subject wells is being submitted to the NMSLO as well.

Enclosed herewith is a map that displays the leases and the location of the subject wells, facility diagram of proposed CTB, (2) Form C-103's, the process and flow descriptions, 6 month production reference sheet, and a C-102 plat for each of the wells involved.

DATE: August 8, 2018

TO: State of New Mexico Oil Conservation Division

RE: Surface Pool/Lease Commingling Application  
Bell Lake South 219H, 319H, 419H and 220H  
Section 36-23S-33E, Section 31-23S-34E, Section 1-24S-33E &  
Section 6-24S-34E  
Lea County, New Mexico

To whom it may concern:

This letter services to notice you that the ownership of the following wells and any wells drilled within the above referenced sections is identical in working, royalty and overriding royalty interest and percentages:

|   | API          | WELL NAME       | WELL # | LOCATION              | POOL CODE/NAME                                       | STATUS                 |
|---|--------------|-----------------|--------|-----------------------|--|------------------------|
| 1 | 30-025-44020 | Bell Lake South | 219H   | L – Section 1-24S-33E | Bell Lake; Bone Spring, South Pool (Pool Code 98264) | Drilled, not completed |
| 2 | 30-025-44021 | Bell Lake South | 319H   | L – Section 1-24S-33E | Bell Lake, Bone Spring, South Pool (Pool Code 98264) | Drilled, not completed |
| 3 | 30-025-44526 | Bell Lake South | 220H   | L- Section 1-24S-33E  | Bell Lake, Bone Spring, South Pool (Pool Code 98264) | Drilled, not completed |
| 4 | 30-025-44022 | Bell Lake South | 419H   | L-Section 1-24S-33E   | Bell Lake, Wolcamp, South Pool (Pool Code 98266)     | Drilled, not completed |

I certify that this information is true and correct to the best of my knowledge.

Sincerely,



Barbara A. Courtney  
Senior Landman

## Process and Flow Descriptions

Oil from each well flows first to its own 3-phase separator and then to its own heater-treater. The oil dump on each heater-treater has a BLM-spec Coriolis meter.

The Bone Spring oil is stored in separate tanks from the Wolfcamp oil. The 3 Bone Spring wells will form a CTB. The Bone Spring oil will go through a separate LACT from the Wolfcamp oil. We have 2 LACTs set on location.

Gas from each well flows to its own separator and through its own check meter to be individually measured. The gas evolved from the heater-treaters (40# back-pressure maintained on heaters), as well as the gas flashed from the tanks goes through common lease VRUs. The VRU gas is combined for the entire tank battery and metered, so it will need to be allocated back to the wells based upon oil volumes since gravities are similar. The VRU gas is combined with the individually metered gas off each separator and the total combined pad gas goes through a Pad check meter before it leaves location. Gas flows through our pipeline to the Targa sales meter 2 miles to the east.

Facility diagram is attached.

APPLICATION FOR SURFACE POOL/LEASE COMMINGLING – 6 MONTH PRODUCTION

| API          | WELL NAME/NO.             | STATUS  | OIL  | GAS  |
|--------------|---------------------------|---------|------|------|
| 30-025-44020 | BELL LAKE UNIT SOUTH 219H | DRILLED | NONE | NONE |
| 30-025-44526 | BELL LAKE UNIT SOUTH 220H | DRILLED | NONE | NONE |
| 30-025-44021 | BELL LAKE UNIT SOUTH 319H | DRILLED | NONE | NONE |
| 30-025-44022 | BELL LAKE UNIT SOUTH 419H | DRILLED | NONE | NONE |

# South Bell Lake Mineral Ownership and Well Paths

## New Wells Pad 2

| Well | Zone            | State Pool Name                    |
|------|-----------------|------------------------------------|
| 219H | 2nd Bone Spring | Bell Lake, Bone Spring, South Pool |
| 220H | 2nd Bone Spring | Bell Lake, Bone Spring, South Pool |
| 319H | 3rd Bone Spring | Bell Lake, Bone Spring, South Pool |
| 419H | Wolfcamp        | Bell Lake, Wolfcamp, South Pool    |

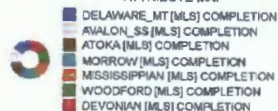
KAISER-FRANCIS OIL CO

By: M.L.S

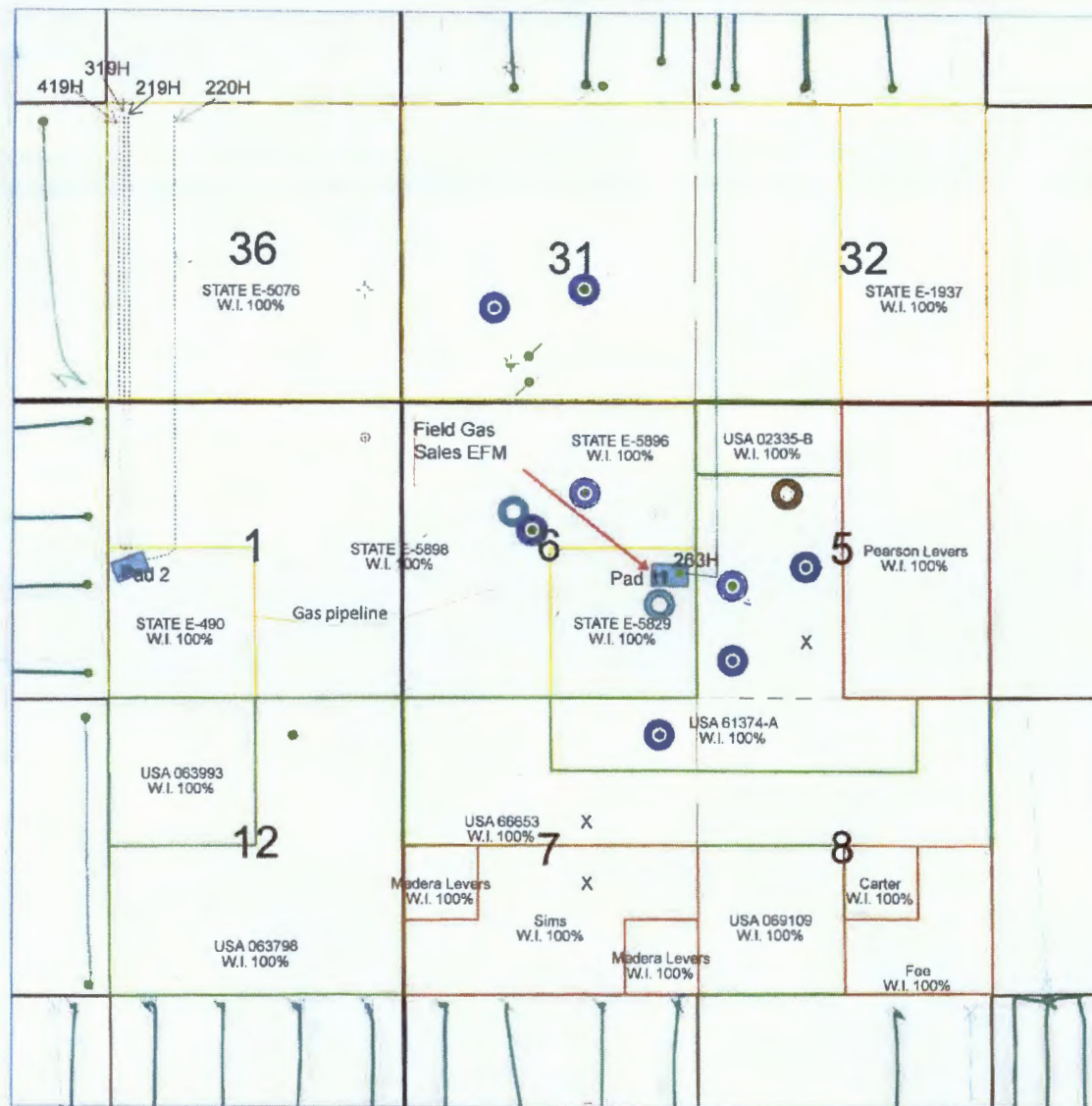
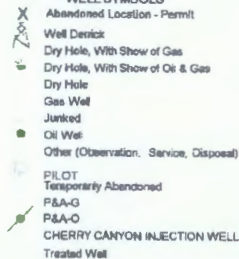
October 10, 2018



### ATTRIBUTE MAP



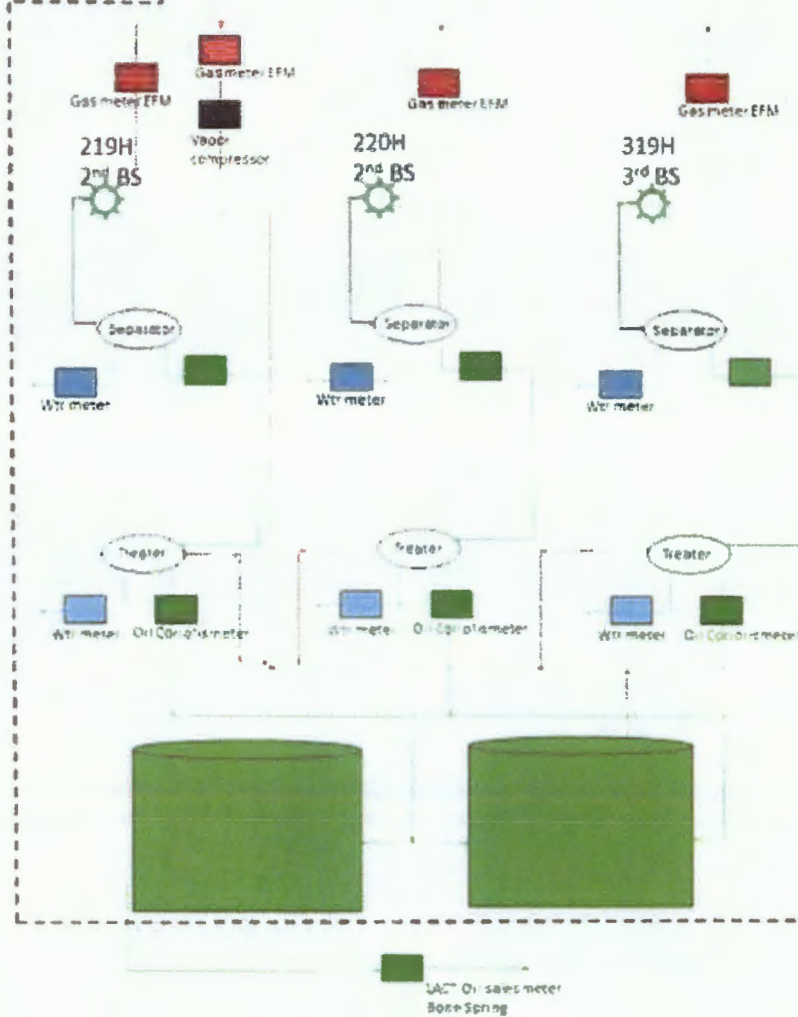
### WELL SYMBOLS



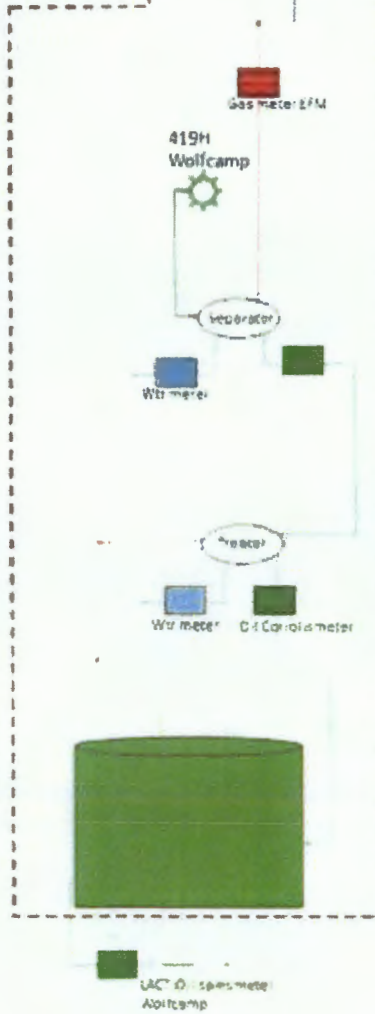
PETRA 10/10/2018 2:53:11 PM

**South Bell Lake  
Pad 2  
Facility Diagram**

**Bone Spring**



**Wolfcamp**





DISTRICT I  
1625 N. French Dr., Hobbs, NM 88240  
Phone: (575) 393-6161 Fax: (575) 393-0720

DISTRICT II  
811 S. First St., Artesia, NM 88210  
Phone: (575) 748-1283 Fax: (575) 748-9720

DISTRICT III  
1000 Rio Brazos Road, Aztec, NM 87410  
Phone: (505) 334-6178 Fax: (505) 334-6170

DISTRICT IV  
1220 S. St. Francis Dr., Santa Fe, NM 87505  
Phone: (505) 476-3460 Fax: (505) 476-3462

State of New Mexico  
Energy, Minerals & Natural Resources Department  
**HOBBS OCD**  
OIL CONSERVATION DIVISION  
1220 South St. Francis Dr.  
Santa Fe, New Mexico 87505  
**APR 25 2018**  
**RECEIVED**

Form C-102  
Revised August 1, 2011  
Submit one copy to appropriate  
District Office

DAMENDED REPORT

WELL LOCATION AND ACREAGE DEDICATION PLAT

|                            |   |                        |
|----------------------------|---|------------------------|
| API Number<br>30-025-44020 | Pool Code<br><del>98259</del> 98264         | Pool Name<br>Bell Lake |
| Property Code<br>316706    | Property Name<br>BELL LAKE UNIT SOUTH       | Well Number<br>219H    |
| OGRID No<br>12361          | Operator Name<br>KAISER-FRANCIS OIL COMPANY | Elevation<br>3631'     |

Surface Location

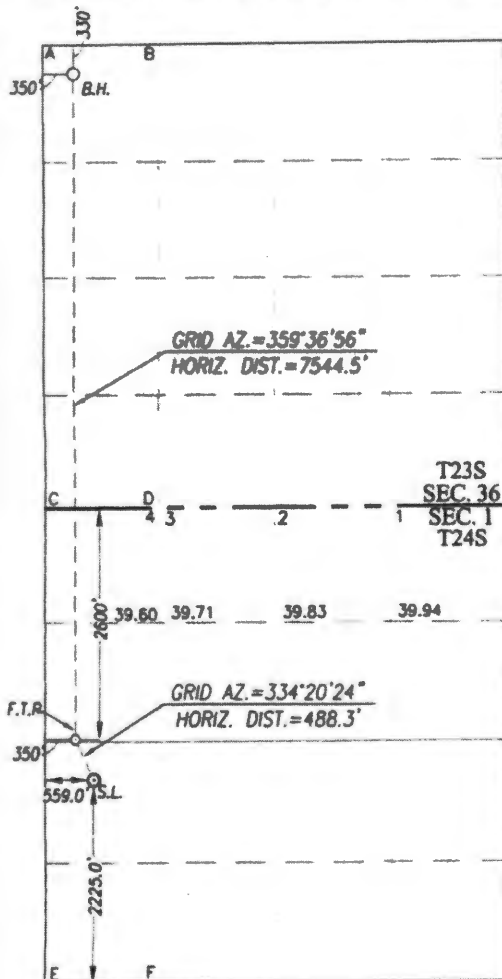
| UL or lot No. | Section | Township | Range | Lot Idn | Feet from the | North/South line | Feet from the | East/West line | County |
|---------------|---------|----------|-------|---------|---------------|------------------|---------------|----------------|--------|
| L             | 1       | 24-S     | 33-E  |         | 2225.0        | SOUTH            | 559.0         | WEST           | LEA    |

Bottom Hole Location If Different From Surface

| UL or lot No.            | Section         | Township           | Range     | Lot Idn | Feet from the | North/South line | Feet from the | East/West line | County |
|--------------------------|-----------------|--------------------|-----------|---------|---------------|------------------|---------------|----------------|--------|
| D                        | 36              | 23-S               | 33-E      |         | 330           | NORTH            | 350           | WEST           | LEA    |
| Dedicated Acres<br>239.6 | Joint or Infill | Consolidation Code | Order No. |         |               |                  |               |                |        |

NO ALLOWABLE WILL BE ASSIGNED TO THIS COMPLETION UNTIL ALL INTERESTS HAVE BEEN CONSOLIDATED OR A NON-STANDARD UNIT HAS BEEN APPROVED BY THE DIVISION

SCALE: 1"=2000'



BOTTOM HOLE LOCATION  
NAD 83 NME  
Y= 461952.0 N  
X= 788568.4 E  
LAT.=32.267448° N  
LONG.=103.533464° W

BOTTOM HOLE LOCATION  
NAD 27 NME  
Y= 461892.8 N  
X= 747384.7 E  
LAT.=32.267324° N  
LONG.=103.532985° W

CORNER COORDINATES TABLE

NAD 27 NME  
A - Y= 462219.8 N, X= 747032.5 E  
B - Y= 462230.8 N, X= 748351.1 E  
C - Y= 456947.4 N, X= 747071.8 E  
D - Y= 456955.5 N, X= 748391.2 E  
E - Y= 451683.5 N, X= 747099.7 E  
F - Y= 451688.5 N, X= 748422.0 E

CORNER COORDINATES TABLE

NAD 83 NME  
A - Y= 462279.1 N, X= 788216.1 E  
B - Y= 462290.0 N, X= 789534.8 E  
C - Y= 457006.5 N, X= 788255.6 E  
D - Y= 457014.5 N, X= 789575.0 E  
E - Y= 451742.4 N, X= 788283.7 E  
F - Y= 451747.4 N, X= 789606.0 E

FIRST TAKE POINT

NAD 83 NME  
Y= 454409.1 N  
X= 788619.0 E  
LAT.=32.246714° N  
LONG.=103.533482° W

FIRST TAKE POINT

NAD 27 NME  
Y= 454350.2 N  
X= 747435.1 E  
LAT.=32.246591° N  
LONG.=103.533004° W

GEODETIC COORDINATES

NAD 83 NME  
SURFACE LOCATION  
Y= 453969.1 N  
X= 788830.4 E  
LAT.=32.245501° N  
LONG.=103.532809° W

GEODETIC COORDINATES

NAD 27 NME  
SURFACE LOCATION  
Y= 453910.1 N  
X= 747646.5 E  
LAT.=32.245377° N  
LONG.=103.532331° W

OPERATOR CERTIFICATION

I hereby certify that the information herein is true and complete to the best of my knowledge and belief, and that this organization either owns a working interest or unleased mineral interest in the land including the proposed bottom hole location or has a right to drill this well at this location pursuant to a contract with an owner of such mineral or working interest, or to a voluntary pooling agreement or a compulsory pooling order heretofore entered by the division.

*Charlotte Van Valkenburg*  
Signature  
4/25/18  
Date

Charlotte Van Valkenburg  
Printed Name

Charlotv@kfoc.net  
E-mail Address

SURVEYOR CERTIFICATION

I hereby certify that the well location shown on this plat was plotted from field notes of actual surveys made by me or under my supervision, and that the same is true and correct to the best of my belief.

NOVEMBER 2, 2017

Date of Survey

Signature & Seal of Professional Surveyor

*Ronald J. Eidson*  
Signature  
3239  
REG.  
NEW MEXICO  
Certificate Number  
12641  
JWSC W.O. 17.11.1099



District I  
1625 N. French Dr., Hobbs, NM 88240  
Phone: (575) 393-6161 Fax: (575) 393-0720  
District II  
811 S. First St., Artesia, NM 88210  
Phone: (575) 748-1283 Fax: (575) 748-9720  
District III  
1000 Rio Brazos Road, Aztec, NM 87410  
Phone: (505) 334-6178 Fax: (505) 334-6170  
District IV  
1220 S. St. Francis Dr., Santa Fe, NM 87505  
Phone: (505) 476-3460 Fax: (505) 476-3462

State of New Mexico  
Energy, Minerals & Natural Resources  
OIL CONSERVATION DIVISION  
1220 South St. Francis Dr.  
Santa Fe, NM 87505

Form C-102  
Revised August 1, 2011  
Submit one copy to appropriate  
District Office

☒ AMENDED REPORT

**HOBBS-UCD**  
**APR 25 2018**  
**RECEIVED**

WELL LOCATION AND ACREAGE DEDICATION PLAT

|   |  |  |
|---|--|--|
| <sup>1</sup> API Number<br>30-025-44526 | <sup>2</sup> Pool Code<br>98259 98264                    | <sup>3</sup> Pool Name<br>Bell Lake<br>Ojo Chiso; Bone Spring, Southwest |
| <sup>4</sup> Property Code<br>316706    | <sup>5</sup> Property Name<br>BELL LAKE UNIT SOUTH       | <sup>6</sup> Well Number<br>220H   |
| <sup>7</sup> OGRID No.<br>12361         | <sup>8</sup> Operator Name<br>KAISER-FRANCIS OIL COMPANY | <sup>9</sup> Elevation<br>3630.4   |

<sup>10</sup> Surface Location

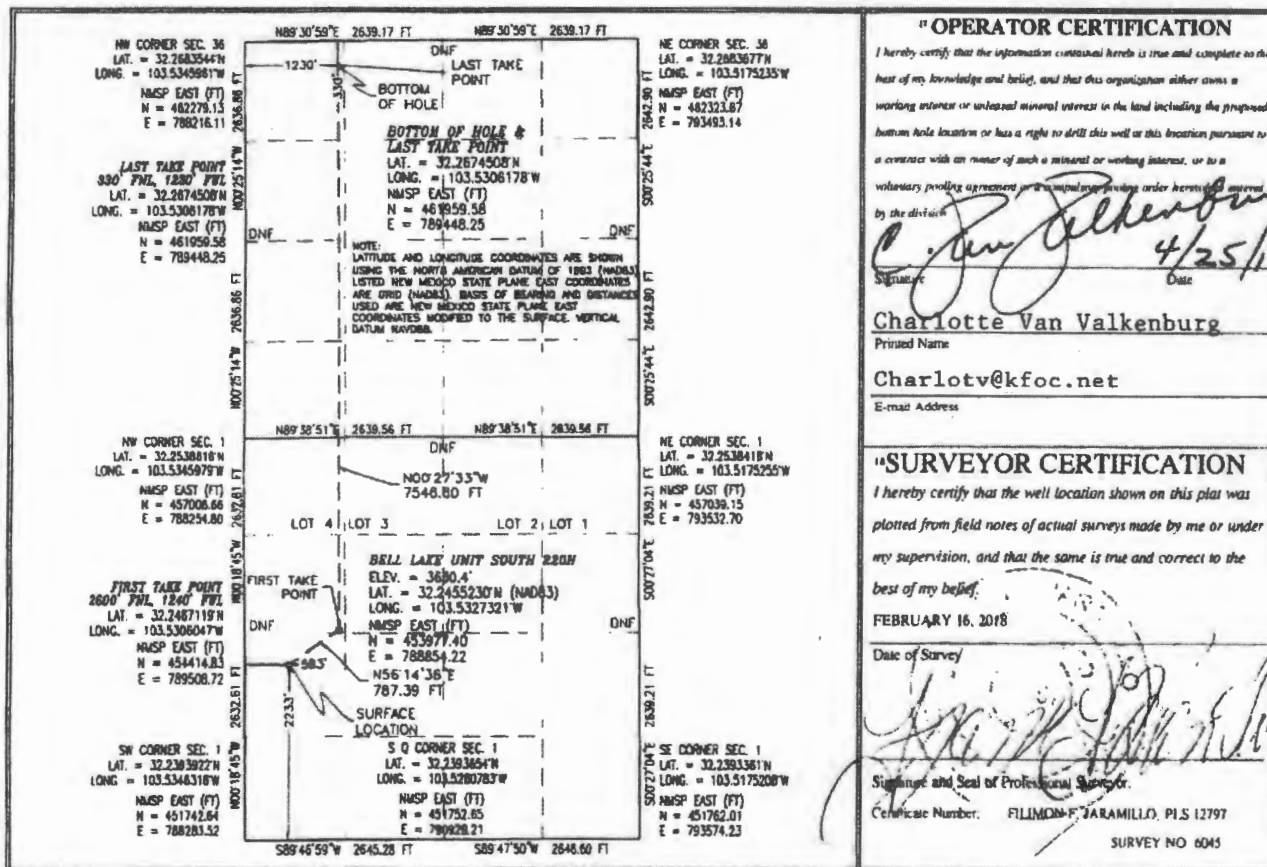
| UL or lot no. | Section | Township | Range | Lot Idn | Feet from the | North/South line | Feet from the | East/West line | County |
|---------------|---------|----------|-------|---------|---------------|------------------|---------------|----------------|--------|
| L             | 1       | 24 S     | 33 E  |         | 2233          | SOUTH            | 583           | WEST           | LEA    |

<sup>11</sup> Bottom Hole Location If Different From Surface

| UL or lot no. | Section | Township | Range | Lot Idn | Feet from the | North/South line | Feet from the | East/West line | County |
|---------------|---------|----------|-------|---------|---------------|------------------|---------------|----------------|--------|
| D             | 36      | 23 S     | 33 E  |         | 330           | NORTH            | 1230          | WEST           | LEA    |

|  |                               |                                  |                         |
|--|-------------------------------|----------------------------------|-------------------------|
| <sup>12</sup> Dedicated Acres<br>239.6 | <sup>13</sup> Joint or Infill | <sup>14</sup> Consolidation Code | <sup>15</sup> Order No. |
|--|-------------------------------|----------------------------------|-------------------------|

No allowable will be assigned to this completion until all interests have been consolidated or a non-standard unit has been approved by the division.



DISTRICT I  
1625 N. French Dr., Hobbs, NM 88240  
Phone: (575) 393-6161 Fax: (575) 393-0720

DISTRICT II  
811 S. First St., Artesia, NM 88210  
Phone: (575) 748-1283 Fax: (575) 748-9720

DISTRICT III  
1000 Rio Brazos Road, Aztec, NM 87410  
Phone: (505) 334-6178 Fax: (505) 334-6170

DISTRICT IV  
1220 S. St. Francis Dr., Santa Fe, NM 87505  
Phone: (505) 476-3460 Fax: (505) 476-3462

State of New Mexico  
Energy, Minerals & Natural Resources Department

OIL CONSERVATION DIVISION

1220 South St. Francis Dr.  
Santa Fe, New Mexico 87505

Form C-102

Revised August 1, 2011

Submit one copy to appropriate  
District Office

DAMENDED REPORT

WELL LOCATION AND ACREAGE DEDICATION PLAT

|                            |   |  |
|----------------------------|---|--|
| API Number<br>30-025-44021 | Pool Code<br>5150                           | Pool Name<br>Bell Lake; Bone Spring, North |
| Property Code<br>316706    | Property Name<br>BELL LAKE UNIT SOUTH       | Well Number<br>319H                        |
| OGRID No<br>12361          | Operator Name<br>KAISER-FRANCIS OIL COMPANY | Elevation<br>3632'                         |

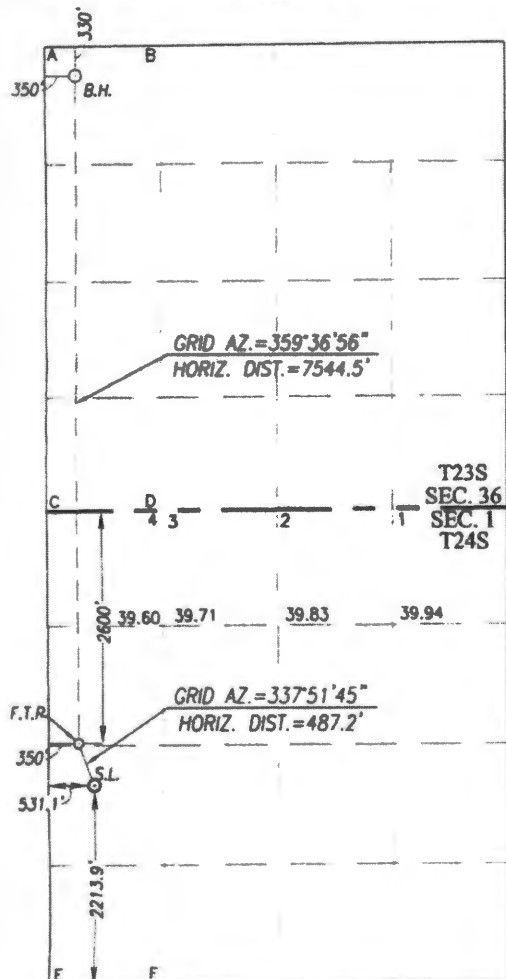
Surface Location

| UL or lot No. | Section | Township | Range | Lot Idn | Feet from the | North/South line | Feet from the | East/West line | County |
|---------------|---------|----------|-------|---------|---------------|------------------|---------------|----------------|--------|
| L             | 1       | 24-S     | 33-E  |         | 2213.9        | SOUTH            | 531.1         | WEST           | LEA    |

Bottom Hole Location If Different From Surface

| UL or lot No.          | Section         | Township           | Range     | Lot Idn | Feet from the | North/South line | Feet from the | East/West line | County |
|------------------------|-----------------|--------------------|-----------|---------|---------------|------------------|---------------|----------------|--------|
| D                      | 36              | 23-S               | 33-E      |         | 330           | NORTH            | 350           | WEST           | LEA    |
| Dedicated Acres<br>160 | Joint or Infill | Consolidation Code | Order No. |         |               |                  |               |                |        |

NO ALLOWABLE WILL BE ASSIGNED TO THIS COMPLETION UNTIL ALL INTERESTS HAVE BEEN CONSOLIDATED OR A NON-STANDARD UNIT HAS BEEN APPROVED BY THE DIVISION



SCALE: 1"=2000'

BOTTOM HOLE LOCATION  
NAD 83 NME  
Y= 461952.0 N  
X= 788568.4 E  
LAT.=32.267448° N  
LONG.=103.533464° W

BOTTOM HOLE LOCATION  
NAD 27 NME  
Y= 461892.8 N  
X= 747384.7 E  
LAT.=32.267324° N  
LONG.=103.532985° W

CORNER COORDINATES TABLE

NAD 27 NME  
A - Y= 462219.8 N, X= 747032.5 E  
B - Y= 462230.8 N, X= 748351.1 E  
C - Y= 456947.4 N, X= 747071.8 E  
D - Y= 456955.5 N, X= 748391.2 E  
E - Y= 451683.5 N, X= 747099.7 E  
F - Y= 451688.5 N, X= 748422.0 E

CORNER COORDINATES TABLE

NAD 83 NME  
A - Y= 462279.1 N, X= 788216.1 E  
B - Y= 462290.0 N, X= 789534.8 E  
C - Y= 457006.5 N, X= 788255.6 E  
D - Y= 457014.5 N, X= 789575.0 E  
E - Y= 451742.4 N, X= 788283.7 E  
F - Y= 451747.4 N, X= 789606.0 E

FIRST TAKE POINT

NAD 83 NME  
Y= 454409.1 N  
X= 788619.0 E  
LAT.=32.246714° N  
LONG.=103.533482° W

FIRST TAKE POINT

NAD 27 NME  
Y= 454350.2 N  
X= 747435.1 E  
LAT.=32.246591° N  
LONG.=103.533004° W

GEODETIC COORDINATES

NAD 83 NME  
SURFACE LOCATION  
Y= 453957.9 N  
X= 788802.6 E  
LAT.=32.245470° N  
LONG.=103.532900° W

GEODETIC COORDINATES

NAD 27 NME  
SURFACE LOCATION  
Y= 453898.9 N  
X= 747618.7 E  
LAT.=32.245347° N  
LONG.=103.532421° W

OPERATOR CERTIFICATION

I hereby certify that the information herein is true and complete to the best of my knowledge and belief, and that this organization either owns a working interest or unleased mineral interest in the land including the proposed bottom hole location or has a right to drill this well at this location pursuant to a contract with an owner of such mineral or working interest, or to a voluntary pooling agreement or a compulsory pooling order heretofore entered by the division.

*C. Van Valkenburg*  
Signature  
11/30/17  
Date

Charlotte Van Valkenburg

Printed Name

Charlotv@kfoc.net

E-mail Address

SURVEYOR CERTIFICATION

I hereby certify that the well location shown on this plat was plotted from field notes of actual surveys made by me or under my supervision, and that the same is true and correct to the best of my belief.

NOVEMBER 2, 2017

Date of Survey

Signature of Registered Professional Surveyor

*Ronald E. Eidson*  
Signature  
12641  
Certificate Number  
J. Eidson 3239  
DSS REG. W.O.: 17131035 JWSC W.O.: 17.11.1060

DISTRICT I  
1625 N. French Dr., Hobbs, NM 88240  
Phone: (575) 393-6161 Fax: (575) 393-0720

DISTRICT II  
811 S. First St., Artesia, NM 88210  
Phone: (575) 748-1283 Fax: (575) 748-9720

DISTRICT III  
1000 Rio Bravo Road, Aztec, NM 87410  
Phone: (505) 334-6178 Fax: (505) 334-6170

DISTRICT IV  
1220 S. St. Francis Dr., Santa Fe, NM 87505  
Phone: (505) 476-3460 Fax: (505) 476-3462

State of New Mexico  
Energy, Minerals & Natural Resources Department  
OIL CONSERVATION DIVISION  
1220 South St. Francis Dr.  
Santa Fe, New Mexico 87505

Form C-102  
Revised August 1, 2011  
Submit one copy to appropriate  
District Office

AMENDED REPORT

WELL LOCATION AND ACREAGE DEDICATION PLAT

|                            |   |   |
|----------------------------|---|---|
| API Number<br>30-025-44022 | Pool Code<br>98266                          | Pool Name<br>Bell Lake; Wolfcamp, South |
| Property Code<br>316706    | Property Name<br>BELL LAKE UNIT SOUTH       | Well Number<br>419H                     |
| OGRID No.<br>12361         | Operator Name<br>KAISER-FRANCIS OIL COMPANY | Elevation<br>3632'                      |

Surface Location

| UL or lot No. | Section | Township | Range | Lot Idn | Feet from the | North/South line | Feet from the | East/West line | County |
|---------------|---------|----------|-------|---------|---------------|------------------|---------------|----------------|--------|
| L             | 1       | 24-S     | 33-E  |         | 2202.9        | SOUTH            | 503.2         | WEST           | LEA    |

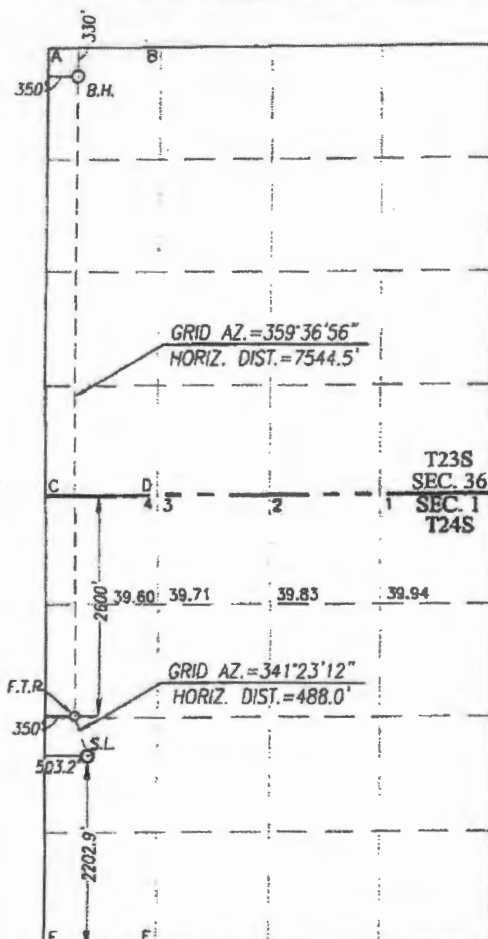
Bottom Hole Location If Different From Surface

| UL or lot No. | Section | Township | Range | Lot Idn | Feet from the | North/South line | Feet from the | East/West line | County |
|---------------|---------|----------|-------|---------|---------------|------------------|---------------|----------------|--------|
| D             | 36      | 23-S     | 33-E  |         | 330           | NORTH            | 350           | WEST           | LEA    |

| Dedicated Acres | Joint or Infill | Consolidation Code | Order No. |
|-----------------|-----------------|--------------------|-----------|
|                 |                 |                    |           |

NO ALLOWABLE WILL BE ASSIGNED TO THIS COMPLETION UNTIL ALL INTERESTS HAVE BEEN CONSOLIDATED OR A NON-STANDARD UNIT HAS BEEN APPROVED BY THE DIVISION

SCALE: 1"=2000'



BOTTOM HOLE LOCATION  
NAD 83 NME  
Y= 461952.0 N  
X= 788568.4 E  
LAT.=32.267448° N  
LONG.=103.533464° W

BOTTOM HOLE LOCATION  
NAD 27 NME  
Y= 461892.8 N  
X= 747384.7 E  
LAT.=32.267324° N  
LONG.=103.532985° W

CORNER COORDINATES TABLE  
NAD 27 NME

A - Y= 462219.8 N, X= 747032.5 E  
B - Y= 462230.8 N, X= 748351.1 E  
C - Y= 456947.4 N, X= 747071.8 E  
D - Y= 456955.5 N, X= 748391.2 E  
E - Y= 451683.5 N, X= 747099.7 E  
F - Y= 451688.5 N, X= 748422.0 E

CORNER COORDINATES TABLE  
NAD 83 NME

A - Y= 462279.1 N, X= 788216.1 E  
B - Y= 462290.0 N, X= 789534.8 E  
C - Y= 457006.5 N, X= 788255.6 E  
D - Y= 457014.5 N, X= 789575.0 E  
E - Y= 451742.4 N, X= 788283.7 E  
F - Y= 451747.4 N, X= 789606.0 E

FIRST TAKE POINT  
NAD 83 NME  
Y= 454409.1 N  
X= 788619.0 E  
LAT.=32.246714° N  
LONG.=103.533482° W

FIRST TAKE POINT  
NAD 27 NME  
Y= 454350.2 N  
X= 747435.1 E  
LAT.=32.246591° N  
LONG.=103.533003° W

GEODETIC COORDINATES  
NAD 83 NME  
SURFACE LOCATION  
Y= 453946.8 N  
X= 788774.7 E  
LAT.=32.245440° N  
LONG.=103.532990° W

GEODETIC COORDINATES  
NAD 27 NME  
SURFACE LOCATION  
Y= 453887.8 N  
X= 747590.8 E  
LAT.=32.245317° N  
LONG.=103.532511° W

OPERATOR CERTIFICATION

I hereby certify that the information herein is true and complete to the best of my knowledge and belief, and that this organization either owns a working interest or unleased mineral interest in the land including the proposed bottom hole location or has a right to drill this well at this location pursuant to a contract with an owner of such mineral or working interest, or to a voluntary pooling agreement or a compulsory pooling order heretofore entered by the division.

*Charlotte Van Valkenburg*  
Signature Date 4/25/18

Charlotte Van Valkenburg

Printed Name

Charlotv@kfoc.net

E-mail Address

SURVEYOR CERTIFICATION

I hereby certify that the well location shown on this plat was plotted from field notes of actual surveys made by me or under my supervision, and that the same is true and correct to the best of my belief.

NOVEMBER 2, 2017

Date of Survey  
Signature & Seal of Professional Surveyor.

*Ronald E. Eidson*  
NEW MEXICO  
3239  
Certificate No. 12641  
DSS REL. W.D.: 17131034 JWSC W.O.: 17.11.1058

DISTRICT I  
1625 N. French Dr., Hobbs, NM 88240  
Phone (575) 393-6161 Fax (575) 393-0720  
DISTRICT II  
811 S. First St., Artesia, NM 88210  
Phone (575) 748-1283 Fax (575) 748-9720  
DISTRICT III  
1000 Rio Brazos Road, Aztec, NM 87410  
Phone (505) 334-6178 Fax (505) 334-6170  
DISTRICT IV  
1220 S. St. Francis Dr., Santa Fe, NM 87505  
Phone (505) 476-3460 Fax (505) 476-3462

State of New Mexico  
Energy, Minerals & Natural Resources Department  
OIL CONSERVATION DIVISION  
1220 South St. Francis Dr.  
Santa Fe, New Mexico 87505

Form C-102  
Revised August 1, 2011  
Submit one copy to appropriate  
District Office

AMENDED REPORT

WELL LOCATION AND ACREAGE DEDICATION PLAT

|                            |   |  |
|----------------------------|---|--|
| API Number<br>30-025-44021 | Pool Code<br>5150                           | Pool Name<br>Bell Lake; Bone Spring, North |
| Property Code<br>316706    | Property Name<br>BELL LAKE UNIT SOUTH       | Well Number<br>319H                        |
| OGRID No<br>12361          | Operator Name<br>KAISER-FRANCIS OIL COMPANY | Elevation<br>3632'                         |

Surface Location

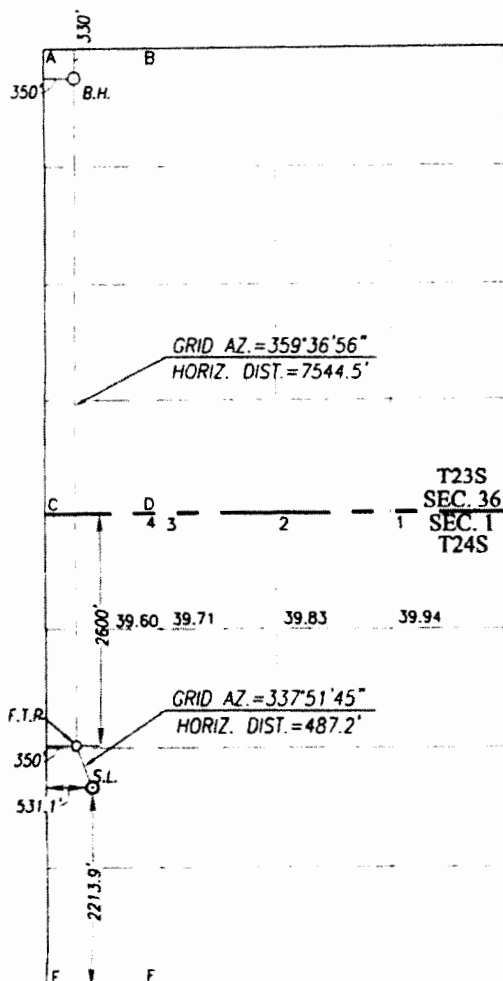
| UL or lot No | Section | Township | Range | Lot Idn | Feet from the | North/South line | Feet from the | East/West line | County |
|--------------|---------|----------|-------|---------|---------------|------------------|---------------|----------------|--------|
| L            | 1       | 24-S     | 33-E  |         | 2213.9        | SOUTH            | 531.1         | WEST           | LEA    |

Bottom Hole Location If Different From Surface

| UL or lot No           | Section         | Township           | Range    | Lot Idn | Feet from the | North/South line | Feet from the | East/West line | County |
|------------------------|-----------------|--------------------|----------|---------|---------------|------------------|---------------|----------------|--------|
| D                      | 36              | 23-S               | 33-E     |         | 330           | NORTH            | 350           | WEST           | LEA    |
| Dedicated Acres<br>160 | Joint or Infill | Consolidation Code | Order No |         |               |                  |               |                |        |

NO ALLOWABLE WILL BE ASSIGNED TO THIS COMPLETION UNTIL ALL INTERESTS HAVE BEEN CONSOLIDATED OR A NON-STANDARD UNIT HAS BEEN APPROVED BY THE DIVISION

SCALE: 1"=2000'



BOTTOM HOLE LOCATION  
NAD 83 NME  
Y= 461952.0 N  
X= 788568.4 E  
LAT.=32.267448° N  
LONG.=103.533464° W

BOTTOM HOLE LOCATION  
NAD 27 NME  
Y= 461892.8 N  
X= 747384.7 E  
LAT.=32.267324° N  
LONG.=103.532985° W

CORNER COORDINATES TABLE

NAD 27 NME  
A - Y= 462219.8 N, X= 747032.5 E  
B - Y= 462230.8 N, X= 748351.1 E  
C - Y= 456947.4 N, X= 747071.8 E  
D - Y= 456955.5 N, X= 748391.2 E  
E - Y= 451683.5 N, X= 747099.7 E  
F - Y= 451688.5 N, X= 748422.0 E

CORNER COORDINATES TABLE

NAD 83 NME  
A - Y= 462279.1 N, X= 788216.1 E  
B - Y= 462290.0 N, X= 789534.8 E  
C - Y= 457006.5 N, X= 788255.6 E  
D - Y= 457014.5 N, X= 789575.0 E  
E - Y= 451742.4 N, X= 788283.7 E  
F - Y= 451747.4 N, X= 789606.0 E

FIRST TAKE POINT

NAD 83 NME  
Y= 454409.1 N  
X= 788619.0 E  
LAT.=32.246714° N  
LONG.=103.533482° W

FIRST TAKE POINT

NAD 27 NME  
Y= 454350.2 N  
X= 747435.1 E  
LAT.=32.246591° N  
LONG.=103.533004° W

GEODETIC COORDINATES

NAD 83 NME  
SURFACE LOCATION  
Y= 453957.9 N  
X= 788802.6 E  
LAT.=32.245470° N  
LONG.=103.532900° W

GEODETIC COORDINATES

NAD 27 NME  
SURFACE LOCATION  
Y= 453898.9 N  
X= 747618.7 E  
LAT.=32.245347° N  
LONG.=103.532421° W

OPERATOR CERTIFICATION

I hereby certify that the information herein is true and complete to the best of my knowledge and belief, and that this organization either owns a working interest or unleased mineral interest in the land including the proposed bottom hole location or has a right to drill this well at this location pursuant to a contract with an owner of such mineral or working interest, or to a voluntary pooling agreement or a compulsory pooling order heretofore entered by the division.

*C. Jan Valkenburg*  
Signature Date 11/30/17

Charlotte Van Valkenburg  
Printed Name

Charlotv@kfoc.net

E-mail Address

SURVEYOR CERTIFICATION

I hereby certify that the well location shown on this plat was plotted from field notes of actual surveys made by me or under my supervision, and that the same is true and correct to the best of my belief.

NOVEMBER 2, 2017

Date of Survey  
Signature & Seal of Professional Surveyor

*Ronald F. Eidson*  
Professional Surveyor  
Certificate Number 12641  
Ronald F. Eidson 3239

DSS REL. W.O.: 17131035

JWSC W.O.: 17.11.1060

WAIVER

Kaiser-Francis Oil Company has filed an Application with the New Mexico Conservation Division seeking authorization to surface co-mingle oil and gas production Bell Lake; Wolfcamp, , South Pool (Pool Code 98266) and Bell Lake; Bone Spring, South Pool (Pool Code 98264) originating from the following, hereinafter referred to as "Wells"

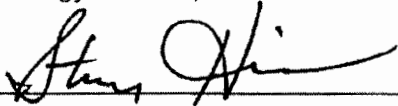
Bell Lake South 219H – API # 30-025-44020  
Bell Lake South 319H – API # 30-025-44526  
Bell Lake South 419H – API # 30-025-44021  
Bell Lake South 220H – API # 30-025-44022

Said application also seeks to measure the "Wells" off lease.

The undersigned working interest owners in the "Wells" hereby waives notice provisions of the New Mexico Oil and Gas Conservation Division and agrees to surface co-mingling oil and gas production for the Wolfcamp and Bone Spring formations as well as off lease measurement on the Wells and lease.

Executed and agreed to this 34 day of AUGUST, 2018.

WPX Energy Permian, LLC

  
\_\_\_\_\_ A1

Name: Steve Hicks

Title: Area Land Manager, Permian

**WAIVER**

Kaiser-Francis Oil Company has filed an Application with the New Mexico Conservation Division seeking authorization to surface co-mingle oil and gas production Bell Lake; Wolfcamp, , South Pool (Pool Code 98266) and Bell Lake; Bone Spring, South Pool (Pool Code 98264) originating from the following, hereinafter referred to as "Wells"

Bell Lake South 219H – API # 30-025-44020  
Bell Lake South 319H – API # 30-025-44526  
Bell Lake South 419H – API # 30-025-44021  
Bell Lake South 220H – API # 30-025-44022

Said application also seeks to measure the "Wells" off lease.

The undersigned working interest owners in the "Wells" hereby waives notice provisions of the New Mexico Oil and Gas Conservation Division and agrees to surface co-mingling oil and gas production for the Wolfcamp and Bone Spring formations as well as off lease measurement on the Wells and lease.

Executed and agreed to this 22 day of Aug., 2018.

LOWE MINERALS AND LAND FAMILY PARTNERSHIP, LTD.

By: [Signature]  
Name: Gregory K. Lowe  
Title: PR

**WAIVER**

Kaiser-Francis Oil Company has filed an Application with the New Mexico Conservation Division seeking authorization to surface co-mingle oil and gas production Bell Lake, Wolfcamp, , South Pool (Pool Code 98266) and Bell Lake; Bone Spring, South Pool (Pool Code 98264) originating from the following, hereinafter referred to as "Wells"

Bell Lake South 219H – API # 30-025-44020

Bell Lake South 319H – API # 30-025-44526

Bell Lake South 419H – API # 30-025-44021

Bell Lake South 220H – API # 30-025-44022

Said application also seeks to measure the "Wells" off lease.

The undersigned working interest owners in the "Wells" hereby waives notice provisions of the New Mexico Oil and Gas Conservation Division and agrees to surface co-mingling oil and gas production for the Wolfcamp and Bone Spring formations as well as off lease measurement on the Wells and lease.

Executed and agreed to this 23<sup>rd</sup> day of August, 2018.

LDL LOWE FAMILY PARTNERSHIP, LTD.

By: Loretta D. Lowe

Name: Loretta D. Lowe

Title: Partner



## Section : 36-23S-33E

Type: Normal

Total Acres: 640

County: Lea (25)

|  |   |   |   |
|--|---|---|---|
| D (D)<br>State <sup>1</sup><br>State <sup>2</sup><br>(25) 40   | C (C)<br>State <sup>1</sup><br>State <sup>2</sup><br>(25) 40    | B (B)<br>State <sup>1</sup><br>State <sup>2</sup><br>(25) 40    | A (A)<br>State <sup>1</sup><br>State <sup>2</sup><br>(25) 40    |
| E (E)<br>State <sup>1</sup><br>State <sup>2</sup><br>(25) 40   | F (F)<br>State <sup>1</sup><br>State <sup>2</sup><br>(25) 40    | G (G)<br>State <sup>1</sup><br>State <sup>2</sup><br>(25) 40    | H (H)<br>State <sup>1</sup><br>State <sup>2</sup><br>(25) 40    |
| L (L)<br>State <sup>1</sup><br>State <sup>2</sup><br>(25) 40   | K (K)<br>State <sup>1</sup><br>State <sup>2</sup><br>(25) 40    | J (J)<br>State <sup>1</sup><br>State <sup>2</sup><br>(25) 40    | I (I)<br>State <sup>1</sup><br>State <sup>2</sup><br>(25) 40    |
| M (M)<br>State <sup>1</sup><br>State <sup>2</sup><br>(25) 40   | N (N)<br>State <sup>1</sup><br>State <sup>2</sup><br>(25) 40    | O (O)<br>State <sup>1</sup><br>State <sup>2</sup><br>(25) 40    | P (P)<br>State <sup>1</sup><br>State <sup>2</sup><br>(25) 40    |
| D (4)<br>State <sup>1</sup><br>State <sup>2</sup><br>(25) 39.6 | C (3)<br>State <sup>1</sup><br>State <sup>2</sup><br>(25) 39.71 | B (2)<br>State <sup>1</sup><br>State <sup>2</sup><br>(25) 39.83 | A (1)<br>State <sup>1</sup><br>State <sup>2</sup><br>(25) 39.94 |
| E (E)<br>State <sup>1</sup><br>State <sup>2</sup><br>(25) 40   | F (F)<br>State <sup>1</sup><br>State <sup>2</sup><br>(25) 40    | G (G)<br>State <sup>1</sup><br>State <sup>2</sup><br>(25) 40    | H (H)<br>State <sup>1</sup><br>State <sup>2</sup><br>(25) 40    |
| L (L)<br>State <sup>1</sup><br>State <sup>2</sup><br>(25) 40   | K (K)<br>State <sup>1</sup><br>State <sup>2</sup><br>(25) 40    | J (J)<br>State <sup>1</sup><br>State <sup>2</sup><br>(25) 40    | I (I)<br>State <sup>1</sup><br>State <sup>2</sup><br>(25) 40    |
| M (M)<br>State <sup>1</sup><br>State <sup>2</sup><br>(25) 40   | N (N)<br>State <sup>1</sup><br>State <sup>2</sup><br>(25) 40    | O (O)<br>State <sup>1</sup><br>State <sup>2</sup><br>(25) 40    | P (P)<br>State <sup>1</sup><br>State <sup>2</sup><br>(25) 4     |