

| | | | |
|-------------------------|------------------|-------------|-----------------------------|
| RECEIVED: 08/24/2018 | REVIEWER: MAN | TYPE: PC | APP NO: PMAM 18236 42027 |
|-------------------------|------------------|-------------|-----------------------------|

ABOVE THIS TABLE FOR OCD DIVISION USE ONLY

NEW MEXICO OIL CONSERVATION DIVISION
 - Geological & Engineering Bureau -
 1220 South St. Francis Drive, Santa Fe, NM 87505

**ADMINISTRATIVE APPLICATION CHECKLIST**

THIS CHECKLIST IS MANDATORY FOR ALL ADMINISTRATIVE APPLICATIONS FOR EXCEPTIONS TO DIVISION RULES AND
 REGULATIONS WHICH REQUIRE PROCESSING AT THE DIVISION LEVEL IN SANTA FE

Applicant: EOG Resources, Inc. P.O. Box 2267 Midland, TX 79702 **OGRID Number:** 7377
Well Name: Mamba 30 State Com 501H and other wells **API:** 30-025-44053
Pool: Wildcat; Lower Bone Spring & Wildcat; Upper Wolfcamp **Pool Code:** 97964 & 98092

**SUBMIT ACCURATE AND COMPLETE INFORMATION REQUIRED TO PROCESS THE TYPE OF APPLICATION
 INDICATED BELOW**

1) TYPE OF APPLICATION: Check those which apply for [A]

A. Location - Spacing Unit - Simultaneous Dedication

☐ NSL☐ NSP (PROJECT AREA)☐ NSP (PRORATION UNIT)☐ SD

B. Check one only for [I] or [II]

[I] Commingling - Storage - Measurement

☐ DHC☐ CTB☐ PLC☒ PC☐ OLS☐ OLM

[II] Injection - Disposal - Pressure Increase - Enhanced Oil Recovery

☐ WFX☐ PMX☐ SWD☐ IPI☐ EOR☐ PPR**2) NOTIFICATION REQUIRED TO:** Check those which apply.A. ☐ Offset operators or lease holdersB. ☐ Royalty, overriding royalty owners, revenue ownersC. ☐ Application requires published noticeD. ☒ Notification and/or concurrent approval by SLOE. ☐ Notification and/or concurrent approval by BLMF. ☐ Surface ownerG. ☐ For all of the above, proof of notification or publication is attached, and/or,H. ☐ No notice required**FOR OCD ONLY**

☐ Notice Complete
☐ Application
 Content
 Complete

- 3) CERTIFICATION:** I hereby certify that the information submitted with this application for administrative approval is **accurate** and **complete** to the best of my knowledge. I also understand that **no action** will be taken on this application until the required information and notifications are submitted to the Division.

Note: Statement must be completed by an individual with managerial and/or supervisory capacity.

Stan Wagner

Print or Type Name

Signature

08/24/2018

Date

432-686-3689

Phone Number

stan_wagner@eogresources.com

e-mail Address



P.O. Box 2267, Midland, Texas 79702
Phone: (432) 686-3600 Fax: (432) 686-3773

Date: August 21, 2018

To: State of New Mexico Oil Conservation Division

Re: Surface Pool/Lease Commingling Application;
Mamba 30 State Com #703H, Mamba 30 State Com #501H, Mamba 30
State Com #502H, Mamba 30 State Com #503H, Mamba 30 State Com
#702H, Mamba 30 State Com #704H

To whom it may concern:

This letter serves to notice you that the ownership of the following wells is identical in
working, royalty, and overriding royalty interest and percentages:

| | API | WELL NAME | WELL# | LOCATION | POOL CODE/NAME | STATUS |
|---|--------------|--------------------|-------|--------------|----------------------------|-----------|
| 1 | 30-025-44057 | Mamba 30 State Com | #703H | P-30-24S-33E | Upper Wolfcamp [98092] | Permitted |
| 2 | 30-025-44053 | Mamba 30 State Com | #501H | A-30-24S-33E | LWR / Bone Springs [97964] | Permitted |
| 3 | 30-025-44955 | Mamba 30 State Com | #502H | A-30-24S-33E | LWR / Bone Springs [97964] | Permitted |
| 4 | 30-025-44956 | Mamba 30 State Com | #503H | O-30-24S-33E | LWR / Bone Springs [97964] | Permitted |
| 5 | 30-025-44959 | Mamba 30 State Com | #702H | O-30-24S-33E | Upper Wolfcamp [98092] | Permitted |
| 6 | 30-025-44957 | Mamba 30 State Com | #704H | O-30-24S-33E | Upper Wolfcamp [98092] | Permitted |

I certify that this information is true and correct to the best of my knowledge.
Sincerely,

EOG Resources, Inc.

By: Matthew Gray
Matthew Gray

Landman

APPLICATION FOR SURFACE POOL/LEASE COMMINGLING - BLM

EOG Resources, Inc. ("EOG") respectfully requests approval to surface pool/lease commingle oil & gas from the following wells:

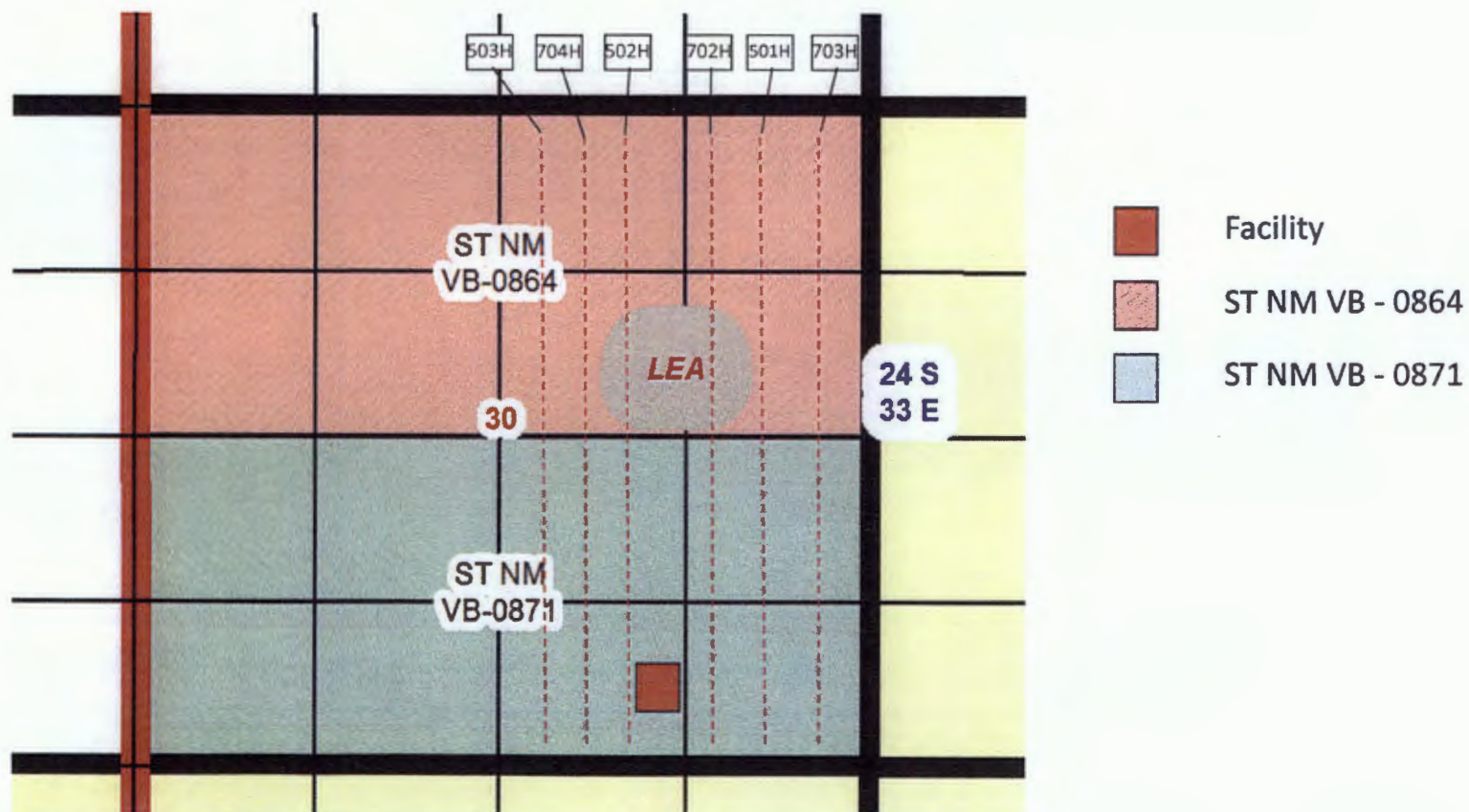
| | API | WELL NAME | WELL# | LOCATION | POOL CODE/NAME | STATUS | *Gravities | *GAS BTU/MCFPD |
|---|--------------|--------------------|-------------|--------------|-------------------------------|-----------|------------|-------------------|
| 1 | 30-025-44057 | Mamba State Com | 30 #703H | P-30-24S-33E | Upper Wolfcamp [98092] | Permitted | 44.1 | 1358 |
| 2 | 30-025-44053 | Mamba State Com | 30 #501H | A-30-24S-33E | LWR / Bone Springs [97964] | Permitted | 41 | 1333 |
| 3 | 30-025-44955 | Mamba State Com | 30 #502H | A-30-24S-33E | LWR / Bone Springs [97964] | Permitted | 41 | 1333 |
| 4 | 30-025-44956 | Mamba State Com | 30 #503H | O-30-24S-33E | LWR / Bone Springs [97964] | Permitted | 41 | 1333 |
| 5 | 30-025-44959 | Mamba State Com | 30 #702H | O-30-24S-33E | Upper Wolfcamp [98092] | Permitted | 44 | 1333 |
| 6 | 30-025-44957 | Mamba State Com | 30 #704H | O-30-24S-33E | Upper Wolfcamp [98092] | Permitted | 44 | 1333 |

*projected, pending completion

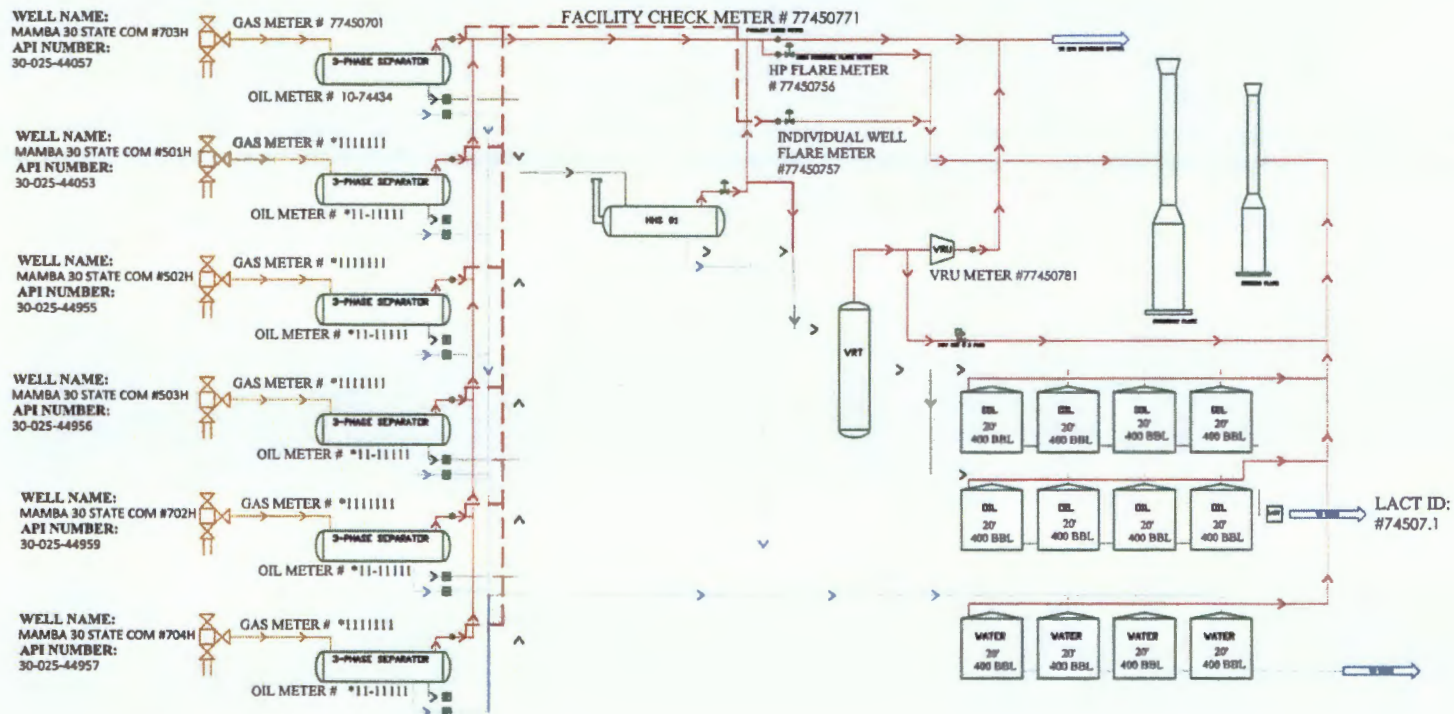
GENERAL INFORMATION:

- State Lease ST NM VB-0864 covers 318.22 acres, being all of the N/2 section 30 in Township 24 South, Range 33 East, Lea County, New Mexico.
- State Lease ST NM VB-0871 covers 318.50 acres, being all of the S/2 of section 30 in Township 24 South, Range 33 East, Lea County, New Mexico.
- The E2-30 of USA NM-122622, E2-30 of ST NM VB-0871 will be communitized for the Wolfcamp formation.
- The E2-30 of USA NM-122622, E2-30 of ST NM VB-0871 will be communitized for the Bone Springs Formation.
- The central tank battery to service the subject wells is located in the SWSE of section 30-24S-33E.
- Ownership is identical in each of the subject wells..
- An application to commingle production from the subject wells is being submitted to the NMSLO and the NMOCD.
- Enclosed herewith is (1) a map that displays the leases, the location of the subject wells, and the proposed CTB, (2) a process flow diagram, (3) and the C-102 plat for each of the wells.

Mamba 30 State Com #703H, #501H, #502H, #503H, #702H & # 704H
 Section 30-24S-33E
 Lea County, NM
 Well Layout and CTB location



FACILITY NAME: MAMBA SOUTH CTB



Gas Orifice Meter
Liquid Meter

MAMBA SOUTH CTB PROCESS FLOW

| | | |
|-----------------------------------|---------|---------------------|
| EDG RESOURCES MIDLAND DIVISION | BY: BKW | rev. 00 8/3/2018 |
|-----------------------------------|---------|---------------------|

Process and Flow Descriptions:

The production from each well will flow into a dedicated 3-phase separator. The production stream will be separated into 3 independent streams (gas, oil, and water) by the separator and each stream will be measured individually after it exits the separator. The gas will be measured using a senior orifice meter and used to allocate total volume measured at the facility check meter, high pressure flare meter, and low pressure flare meter.

MAMBA 30 STATE COM #703H gas allocation meter is an Emerson orifice meter (S/N 77450701)
MAMBA 30 STATE COM #501H gas allocation meter is an Emerson orifice meter (S/N *11111111)
MAMBA 30 STATE COM #502H gas allocation meter is an Emerson orifice meter (S/N *11111111)
MAMBA 30 STATE COM #503H gas allocation meter is an Emerson orifice meter (S/N *11111111)
MAMBA 30 STATE COM #702H gas allocation meter is an Emerson orifice meter (S/N *11111111)
MAMBA 30 STATE COM #704H gas allocation meter is an Emerson orifice meter (S/N *11111111)

The oil from the separators will be measured using a Coriolis meter.

MAMBA 30 STATE COM #703H oil allocation meter is a FMC Coriolis meter (S/N 10-74434)
MAMBA 30 STATE COM #501H oil allocation meter is a FMC Coriolis meter (S/N *11-11111)
MAMBA 30 STATE COM #502H oil allocation meter is a FMC Coriolis meter (S/N *11-11111)
MAMBA 30 STATE COM #503H oil allocation meter is a FMC Coriolis meter (S/N *11-11111)
MAMBA 30 STATE COM #702H oil allocation meter is a FMC Coriolis meter (S/N *11-11111)
MAMBA 30 STATE COM #704H oil allocation meter is a FMC Coriolis meter (S/N *11-11111)

The water will be measured using a vortex meter. The water from each separator is combined in a common header and flows into (4) 400 barrel coated steel tanks. Guided wave radar is used to measure water volumes in these tanks. The oil from each separator will be combined into a common header and flow into a heated horizontal separator (HHS) to aid separation of water entrained in the oil. Water from the heated separator flows into the common water header connected to the (4) 400 barrel water tanks. The water is then pumped and/or trucked to a salt water disposal well. The oil from the heated separator flows through a vapor recovery tower (VRT) where gas is allowed to breakout at a lower pressure, and then the oil flows into (8) 400 barrel coated steel tanks. Guided wave radar is used to measure water and oil volumes in these tanks. Oil is pumped out of the tanks through a Coriolis meter into a truck or a pipeline. Every tank utilizes a guided wave radar to determine the volume of product in each. After the gas from each separator is measured it is combined into a common header. The gas from the heated separator also flows into this header. The gas flows through the header to a custody transfer orifice meter (#77450771) that serves as our lease production meter. If the pipeline is experiencing problems and cannot take any gas, the gas will flow through the high pressure flare meter (#77450756) to the flare. If an individual well needed to be flared for any operation reason it will be manually routed through the individual well flare meter (#77450757) to the flare. The overhead gas from the vapor recovery tower is compressed by a vapor recovery compressor and then measured by a custody transfer Emerson orifice meter (#77450781). The gas from the vapor recovery system combines with the gas from the lease production meter and flows into our gas gathering pipeline system. *Meter numbers will be provided upon installation of meters and completion of the facility.

APPLICATION FOR, COMMINGLING AT A COMMON CENTRAL TANK BATTERY

Proposal **MAMBA SOUTH CTB:**

EOG Resources, Inc. is requesting approval to commingle the following wells in a common central tank battery:

Federal Lease # NM #####

| Well Name | Location | API # | Pool | Oil BPD | Gravities | MSCFPD | BTU |
|--------------------------|----------|--------------|------|---------|-----------|--------|-------|
| MAMBA 30 STATE COM #703H | | 30-025-44057 | | 476.27 | 44.1 | 752.82 | 1358 |
| MAMBA 30 STATE COM #501H | | 30-025-44053 | | *2500 | *41 | *4000 | *1333 |
| MAMBA 30 STATE COM #502H | | 30-025-44955 | | *2500 | *41 | *4000 | *1333 |
| MAMBA 30 STATE COM #503H | | 30-025-44956 | | *2500 | *41 | *4000 | *1333 |
| MAMBA 30 STATE COM #702H | | 30-025-44959 | | *1900 | *44 | *3200 | *1333 |
| MAMBA 30 STATE COM #704H | | 30-025-44957 | | *1900 | *44 | *3200 | *1333 |

*Estimated numbers for these wells; will provide actual numbers once these wells are producing.

District I
1625 N. French Dr., Hobbs, NM 88240
Phone: (575) 393-6161 Fax: (575) 393-
District II
811 S. First St., Artesia, NM 88210
Phone: (575) 748-1283 Fax: (575) 748-9720
District III
1880 Rio Bonito Road, Aztec, NM 87410
Phone: (505) 334-6178 Fax: (505) 334-6179
District IV
1220 S. St. Francis Dr., Santa Fe, NM 87505
Phone: (505) 476-3460 Fax: (505) 476-3462

HOBBS OGD

State of New Mexico
Energy, Minerals & Natural Resources
Department
OIL CONSERVATION DIVISION
1220 South St. Francis Dr.
Santa Fe, NM 87505

FORM C-102

Revised August 1, 2011

Submit one copy to appropriate

District Office

JUL 31 2018

RECEIVED

☒ AMENDED REPORT

WELL LOCATION AND ACREAGE DEDICATION PLAT

| | | | | | |
|---|--|---|--|---|-----------------------------------|
| ¹ API Number 30-025-44053 | | ² Pool Code 97964 | | ³ Pool Name WC-025 G-07 S243225C; Lower Bone Spring | |
| ⁴ Property Code 319634 | | ⁵ Property Name MAMBA 30 STATE COM | | | ⁶ Well Number #501H |
| ⁷ OGRID No. 7377 | | ⁸ Operator Name EOG RESOURCES, INC. | | | ⁹ Elevation 3551' |

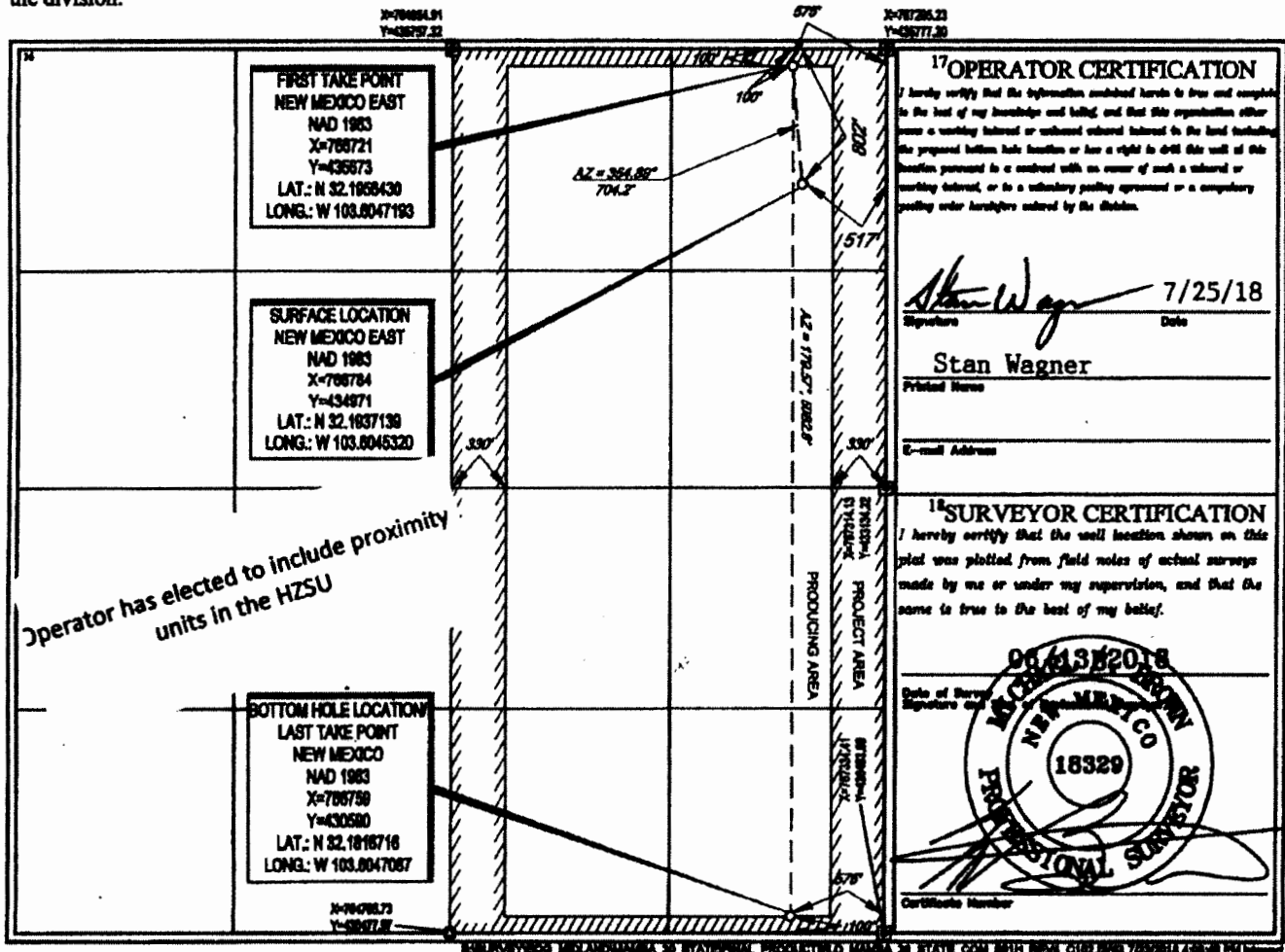
¹⁰Surface Location

| UL or lot no. | Section | Township | Range | Lot Idn | Feet from the | North/South line | Feet from the | East/West line | County |
|---------------|---------|----------|-------|---------|---------------|------------------|---------------|----------------|--------|
| A | 30 | 24-S | 33-E | - | 802' | NORTH | 517' | EAST | LEA |

| UL or lot no. | Section | Township | Range | Lot Idn | Feet from the | North/South line | Feet from the | East/West line | County |
|---------------|---------|----------|-------|---------|---------------|------------------|---------------|----------------|--------|
| P | 30 | 24-S | 33-E | - | 100' | SOUTH | 575' | EAST | LEA |

| | | | |
|---|-------------------------------|----------------------------------|-------------------------|
| ¹¹ Dedicated Acres 320.00 | ¹² Joint or Infill | ¹³ Consolidation Code | ¹⁴ Order No. |
|---|-------------------------------|----------------------------------|-------------------------|

No allowable will be assigned to this completion until all interests have been consolidated or a non-standard unit has been approved by the division.



District I
1625 N. French Dr., Hobbs, NM 88240
Phone: (575) 393-6161 Fax: (575) 393-0720
District II
811 S. First St., Artesia, NM 88210
(575) 748-1283 Fax: (575) 748-1720
District III
1000 Rio Grande Road, Aztec, NM 87410
(505) 334-6178 Fax: (505) 334-6170
District IV
1220 S. St. Francis Dr., Santa Fe, NM 87505
(505) 476-3460 Fax: (505) 476-3462

HOBBS OGD
JUL 31 2018
RECEIVED

State of New Mexico
Energy, Minerals & Natural Resources
Department
OIL CONSERVATION DIVISION
1220 South St. Francis Dr.
Santa Fe, NM 87505

FORM C-102
Revised August 1, 2011
Submit one copy to appropriate
District Office

☒ AMENDED REPORT

WELL LOCATION AND ACREAGE DEDICATION PLAT

| | | | |
|----------------------------|--------------------------------------|--------------------|--|
| API Number 30-025-44955 | | Well Code 97964 | Well Name WC-025 G-07 S243225C; LOWER BONE SPRING |
| Property Code 319634 | Property Name MAMBA 30 STATE COM | | Well Number #502H |
| GRID No. 7377 | Operator Name EOG RESOURCES, INC. | | Elevation 3551' |

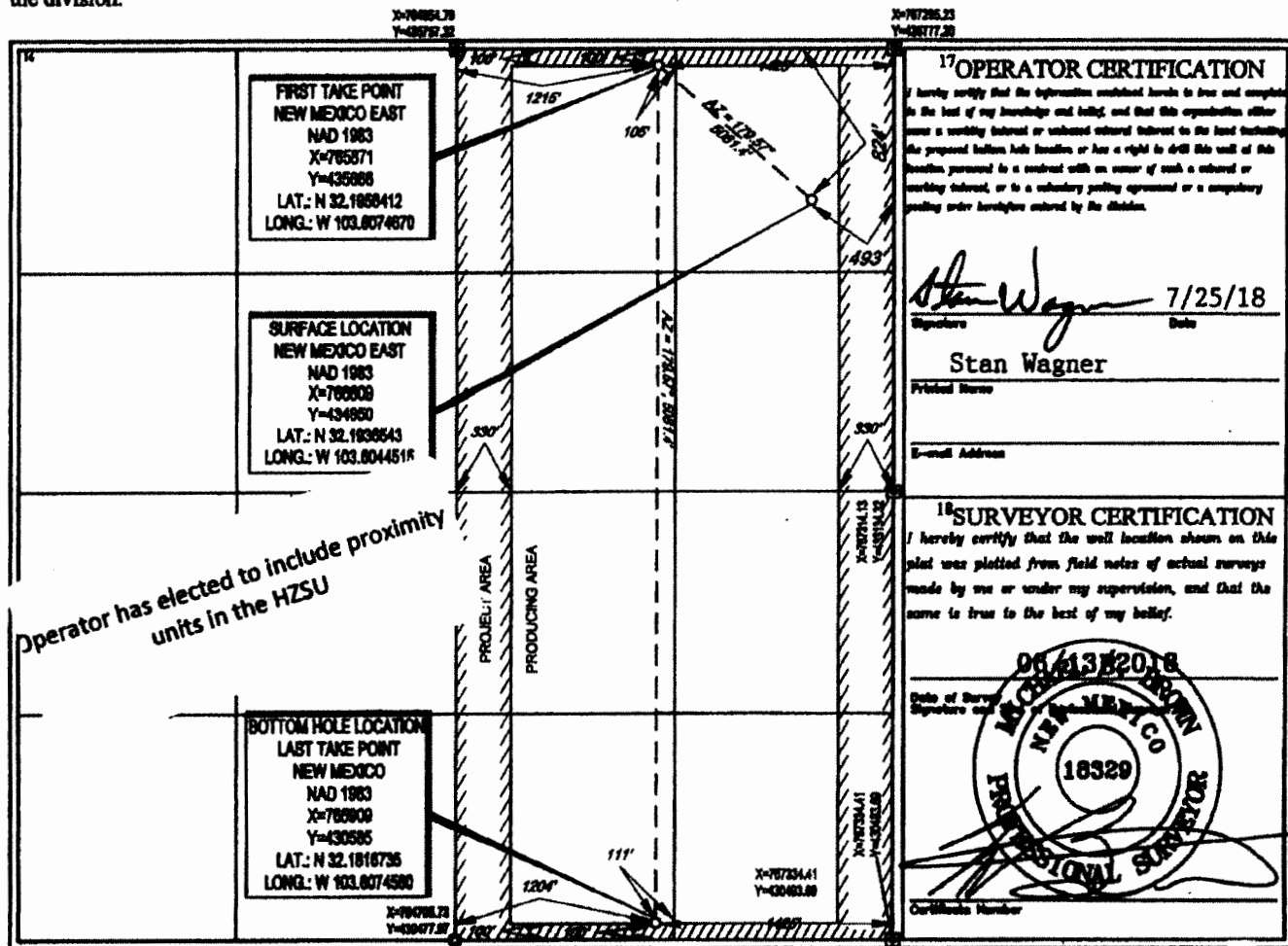
10 Surface Location

| UL or lot no. | Section | Township | Range | Lot Idn | Feet from the | North/South line | Feet from the | East/West line | County |
|---------------|---------|----------|-------|---------|---------------|------------------|---------------|----------------|--------|
| A | 30 | 24-S | 33-E | - | 824' | NORTH | 493' | EAST | LEA |

| UL or lot no. | Section | Township | Range | Lot Idn | Feet from the | North/South line | Feet from the | East/West line | County |
|---------------|---------|----------|-------|---------|---------------|------------------|---------------|----------------|--------|
| 0 | 30 | 24-S | 33-E | - | 100' | SOUTH | 1425' | EAST | LEA |

| | | | |
|---------------------------|-----------------|--------------------|-----------|
| Dedicated Acres 320.00 | Joint or Infill | Consolidation Code | Order No. |
|---------------------------|-----------------|--------------------|-----------|

No allowable will be assigned to this completion until all interests have been consolidated or a non-standard unit has been approved by the division.



20
70
05
02

HOBBS OGD
State of New Mexico
Energy, Minerals & Natural Resources
Department
JUL 31 2008
RECEIVED
MIL CONSERVATION DIVISION
1220 South St. Francis Dr.
Santa Fe, NM 87505

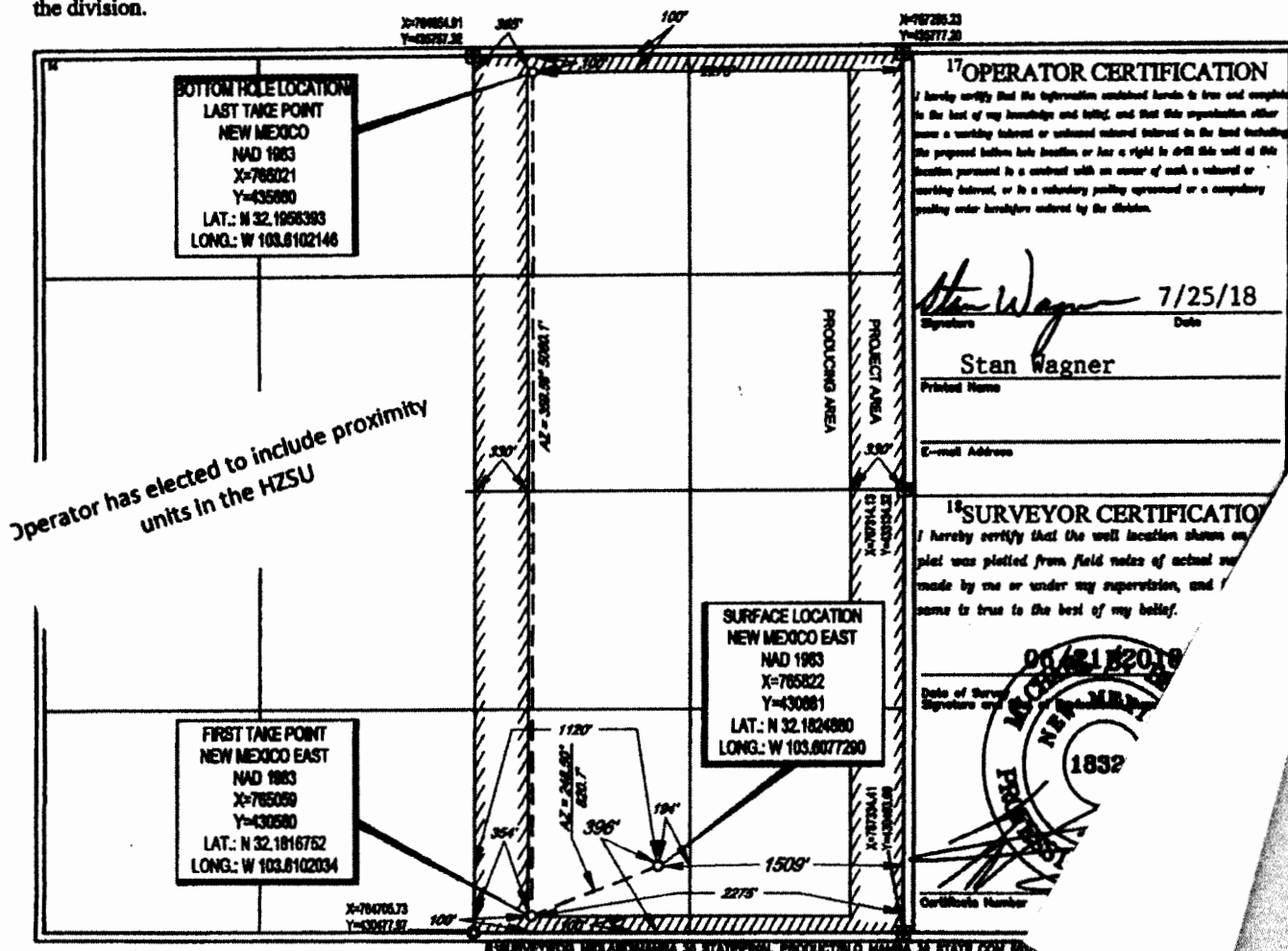
AMENDED REPORT

| | | | | |
|----------------------------|--------------------------------------|--------------------|--|----------------------|
| APN Number 30-025-44956 | | Pool Code 97964 | Pool Name WC-025 G-07 S243225C; Lower Bone Spring | |
| Property Code 319634 | Property Name MAMBA 30 STATE COM | | | Well Number #503H |
| OGRIID No. 7377 | Operator Name EOG RESOURCES, INC. | | | Elevation 3537' |

| UL or lot no. | Section | Township | Range | Lot Ida | Feet from the | North/South line | Feet from the | East/West line | County |
|---------------|---------|----------|-------|---------|---------------|------------------|---------------|----------------|--------|
| 0 | 30 | 24-S | 33-E | - | 396' | SOUTH | 1509' | EAST | LEA |

| | | | | | | | | | |
|---------------|---------|----------|-------|-----|---------------|------------------|---------------|----------------|--------|
| UL or lot no. | Section | Township | Range | Lot | Dist from the | North/South line | Dist from the | East/West line | County |
| B | 30 | 24-S | 33-E | - | 100' | NORTH | 2275' | EAST | LEA |

| | | | |
|--|-----------------------------|----------------------------------|-------------------------|
| ¹² Dedicated Acres 320.00 | ¹³ Joint or InRR | ¹⁴ Consolidation Code | ¹⁵ Order No. |
|--|-----------------------------|----------------------------------|-------------------------|



District I
1625 N. French Dr., Hobbs, NM 88240
Phone: (575) 393-6161 Fax: (575) 393-0720
District II
811 S. First St., Artesia, NM 88210
Phone: (575) 748-1283 Fax: (575) 748-9720
District III
1000 Rio Grande Road, Aztec, NM 87410
Phone: (505) 334-6178 Fax: (505) 334-6170
District IV
1220 S. St. Francis Dr., Santa Fe, NM 87505
Phone: (505) 476-3460 Fax: (505) 476-3462

State of New Mexico
Energy, Minerals & Natural Resources
Department
OIL CONSERVATION DIVISION
1220 South St. Francis Dr.
Santa Fe, NM 87505

HOBBS OCD

JUL 31 2018

RECEIVED

FORM C-102

Revised August 1, 2011

Submit one copy to appropriate

District Office



AMENDED REPORT

WELL LOCATION AND ACREAGE DEDICATION PLAT

| | | | |
|------------------------------------|---|---------------------------|--|
| API Number 30-025- 44959 | | Pool Code 98092 | Pool Name Wc-025 G-09 S243336I; Upper Wolfcamp |
| Property Code 319634 | Property Name MAMBA 30 STATE COM | | Well Number #702H |
| OGRID No. 7377 | Operator Name EOG RESOURCES, INC. | | Elevation 3538' |

10 Surface Location

| UL or lot no. | Section | Township | Range | Lot Idn | Foot from the | North/South line | Foot from the | East/West line | County |
|---------------|-----------|-------------|-------------|----------|---------------|------------------|---------------|----------------|------------|
| 0 | 30 | 24-S | 33-E | - | 330' | SOUTH | 1509' | EAST | LEA |

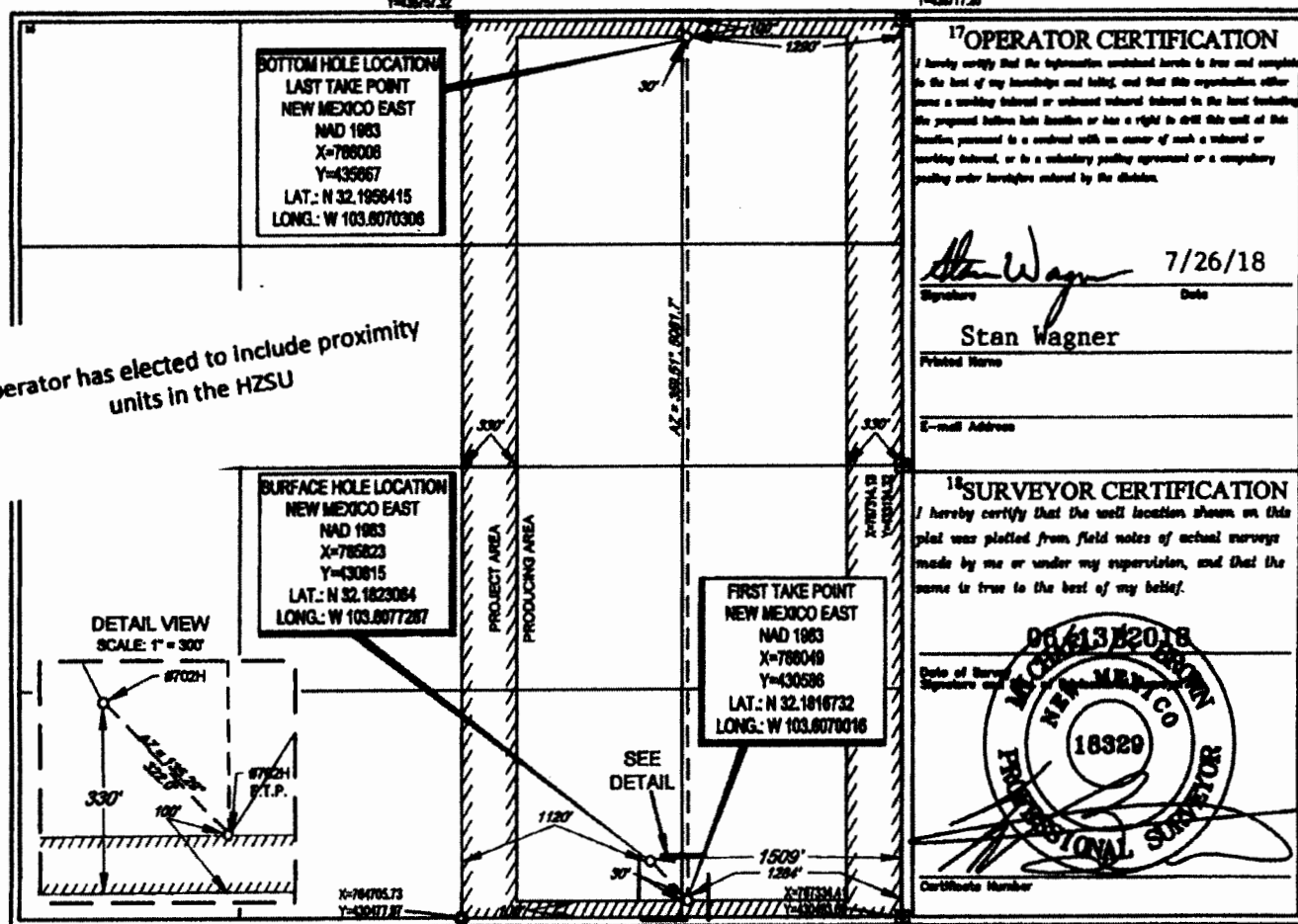
| UL or lot no. | Section | Township | Range | Lot Idn | Foot from the | North/South line | Foot from the | East/West line | County |
|---------------|-----------|-------------|-------------|----------|---------------|------------------|---------------|----------------|------------|
| A | 30 | 24-S | 33-E | - | 100' | NORTH | 1290' | EAST | LEA |

| | | | |
|----------------------------------|-----------------|--------------------|-----------|
| Dedicated Acres 320.00 | Joint or Infill | Consolidation Code | Order No. |
|----------------------------------|-----------------|--------------------|-----------|

No allowable will be assigned to this completion until all interests have been consolidated or a non-standard unit has been approved by the division.

X=76884.81
Y=43567.32

X=767286.23
Y=43577.39



Operator has elected to include proximity units in the HZSU

District I
1623 N. French Dr., Hobbs, NM 88240
Phone: (575) 393-6161 Fax: (575) 393-0720
District II
811 S. First St., Artesia, NM 88210
Phone: (575) 748-1283 Fax: (575) 748-9720
District III
1000 Rio Brazos Road, Aztec, NM 87410
Phone: (505) 334-6178 Fax: (505) 334-6170
District IV
1220 S. St. Francis Dr., Santa Fe, NM 87505
Phone: (505) 476-3460 Fax: (505) 476-3462

State of New Mexico
Energy, Minerals & Natural Resources
Department
OIL CONSERVATION DIVISION
1220 South St. Francis Dr.
Santa Fe, NM 87505

HOBBS OCD
MAR 22 2018

RECEIVED

FORM C-102
Revised August 1, 2011
Submit one copy to appropriate
District Office

☐ AMENDED REPORT

WELL LOCATION AND ACREAGE DEDICATION PLAT

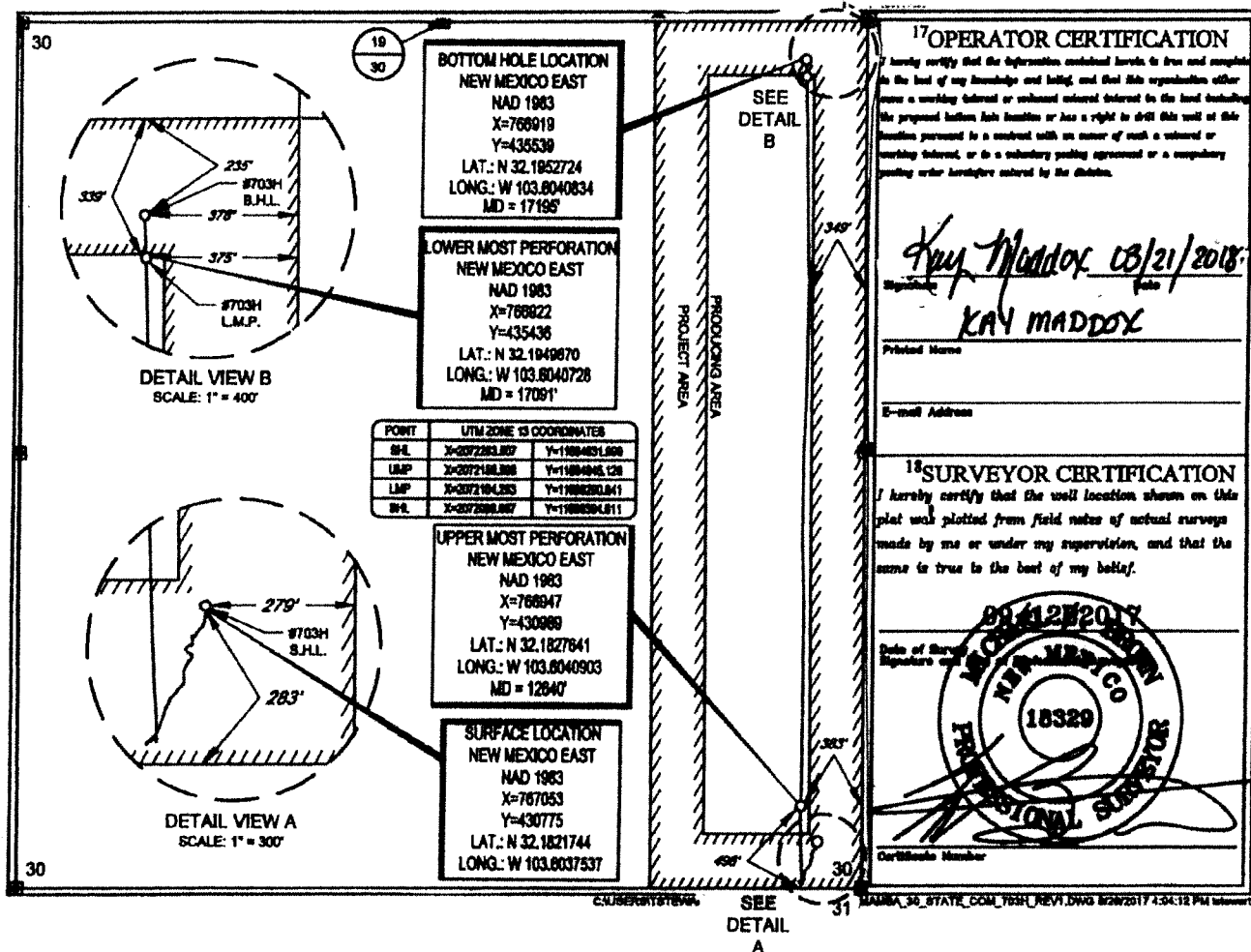
| | | | | |
|------------------------------------|---|---------------------|---|--|
| API Number 30-025- 44057 | | Pool Code v98092 | Pool Name WC-025 G-09 S243336I; Upper Wolfcamp | |
| Property Code 319634 | Property Name MAMBA 30 STATE COM | | Well Number #703H | |
| OGRID No. 7377 | Operator Name EOG RESOURCES, INC. | | Elevation 3522' | |

| 10 Surface Location | | | | | | | | | |
|---------------------------|----------------------|-------------------------|----------------------|--------------------|------------------------------|----------------------------------|------------------------------|-------------------------------|----------------------|
| UL or lot no. P | Section 30 | Township 24-S | Range 33-E | Lot Id - | Feet from the 283' | North/South line SOUTH | Feet from the 279' | East/West line EAST | County LEA |

| | | | | | | | | | |
|---------------------------|----------------------|-------------------------|----------------------|--------------------|------------------------------|----------------------------------|------------------------------|-------------------------------|----------------------|
| UL or lot no. A | Section 30 | Township 24-S | Range 33-E | Lot Id - | Feet from the 285' | North/South line NORTH | Feet from the 378' | East/West line EAST | County LEA |
|---------------------------|----------------------|-------------------------|----------------------|--------------------|------------------------------|----------------------------------|------------------------------|-------------------------------|----------------------|

| | | | |
|----------------------------------|-----------------|--------------------|-----------|
| Dedicated Acres 160.00 | Joint or Infill | Consolidation Code | Order No. |
|----------------------------------|-----------------|--------------------|-----------|

No allowable will be assigned to this completion until all interests have been consolidated or a non-standard unit has been approved by the division.



District I
1625 N. French Dr., Hobbs, NM 88240
Phone: (575) 393-6161 Fax: (575) 393-0720
District II
811 S. First St., Artesia, NM 88210
Phone: (575) 748-1283 Fax: (575) 748-9720
District III
1000 Rio Bravo Road, Aztec, NM 87410
Phone: (505) 334-6178 Fax: (505) 334-6170
District IV
1220 S. St. Francis Dr., Santa Fe, NM 87505
Phone: (505) 476-3460 Fax: (505) 476-3462

State of New Mexico **HOBBS OCD**
Energy, Minerals & Natural Resources
Department **JUL 31 2018**
OIL CONSERVATION DIVISION
1220 South St. Francis Dr.
Santa Fe, NM 87505 **RECEIVED**

FORM C-102
Revised August 1, 2011
Submit one copy to appropriate
District Office

☒ AMENDED REPORT

WELL LOCATION AND ACREAGE DEDICATION PLAT

| | | | |
|----------------------------|--------------------------------------|--------------------|---|
| API Number 30-025-44957 | | Pool Code 98092 | Pool Name WC-025 G-09 S2433361; Upper Wolfcamp |
| Property Code 319634 | Property Name MAMBA 30 STATE COM | | Well Number #704H |
| OGRIID No. 7377 | Operator Name EOG RESOURCES, INC. | | Elevation 3538' |

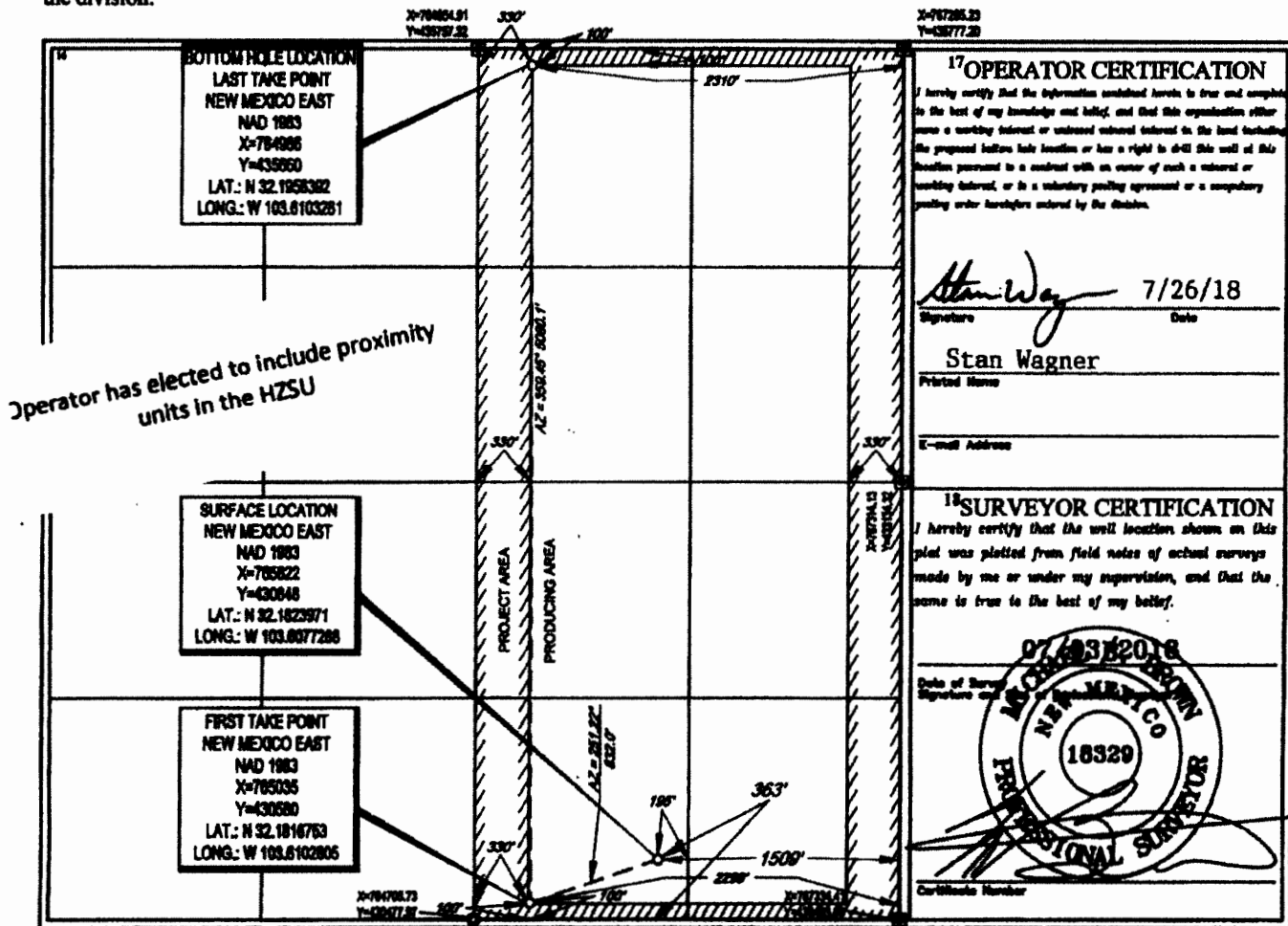
10 Surface Location

| UL or lot no. | Section | Township | Range | Lot No. | Feet from the | North/South line | Feet from the | East/West line | County |
|---------------|---------|----------|-------|---------|---------------|------------------|---------------|----------------|--------|
| 0 | 30 | 24-S | 33-E | - | 363' | SOUTH | 1509' | EAST | LEA |

| UL or lot no. | Section | Township | Range | Lot No. | Feet from the | North/South line | Feet from the | East/West line | County |
|---------------|---------|----------|-------|---------|---------------|------------------|---------------|----------------|--------|
| B | 30 | 24-S | 33-E | - | 100' | NORTH | 2310' | EAST | LEA |

| | | | |
|---------------------------|-----------------|--------------------|-----------|
| Dedicated Acres 320.00 | Joint or Infill | Consolidation Code | Order No. |
|---------------------------|-----------------|--------------------|-----------|

No allowable will be assigned to this completion until all interests have been consolidated or a non-standard unit has been approved by the division.



Monthly Production Data

Mamba 30 Satte Com 703H

| Month End Date | Oil - Prod | Oil - Sales | Gas - Prod | Gas - Sales | Water - Prod | MMBTU |
|----------------|------------|-------------|------------|-------------|--------------|-------|
| 5/31/2018 0:00 | 20215 | 20108 | 47309 | 46657 | 21107 | 63465 |
| 6/30/2018 0:00 | 15304 | 15052 | 35356 | 35356 | 15945 | 49312 |
| 7/31/2018 0:00 | 14870 | 15136 | 36365 | 36365 | 15517 | 49282 |