

RECEIVED: 10/24/2018	REVIEWER: K. Amy	TYPE: CTB	APP NO: DMA 18303 30732
-------------------------	---------------------	--------------	----------------------------

ABOVE THIS TABLE FOR OCD DIVISION USE ONLY

NEW MEXICO OIL CONSERVATION DIVISION
 - Geological & Engineering Bureau -
 1220 South St. Francis Drive, Santa Fe, NM 87505

**ADMINISTRATIVE APPLICATION CHECKLIST**

THIS CHECKLIST IS MANDATORY FOR ALL ADMINISTRATIVE APPLICATIONS FOR EXCEPTIONS TO DIVISION RULES AND
 REGULATIONS WHICH REQUIRE PROCESSING AT THE DIVISION LEVEL IN SANTA FE

Applicant: Matador Production Company**OGRID Number:** 228937**Well Name:** Larry Wolfish 01 23S 27E RB No. 204H Well**API:** 30-015-45269**Pool:** Wolfcamp Gas Pool**Pool Code:** 98220

**SUBMIT ACCURATE AND COMPLETE INFORMATION REQUIRED TO PROCESS THE TYPE OF APPLICATION
 INDICATED BELOW**

1) TYPE OF APPLICATION: Check those which apply for [A]

A. Location - Spacing Unit - Simultaneous Dedication

☐ NSL☐ NSP (PROJECT AREA)☐ NSP (PRORATION UNIT)☐ SD

B. Check one only for [I] or [II]

[I] Commingling - Storage - Measurement

☐ DHC☒ CTB☐ PLC☐ PC☒ OLS☒ OLM

[II] Injection - Disposal - Pressure Increase - Enhanced Oil Recovery

☐ WFX☐ PMX☐ SWD☐ IPI☐ EOR☐ PPR

CTB-876

2) NOTIFICATION REQUIRED TO: Check those which apply.A. ☐ Offset operators or lease holdersB. ☒ Royalty, overriding royalty owners, revenue ownersC. ☐ Application requires published noticeD. ☒ Notification and/or concurrent approval by SLOE. ☐ Notification and/or concurrent approval by BLMF. ☐ Surface ownerG. ☒ For all of the above, proof of notification or publication is attached, and/or,H. ☐ No notice required**FOR OCD ONLY**☐

Notice Complete

☐Application
Content
Complete

- 3) CERTIFICATION:** I hereby certify that the information submitted with this application for administrative approval is **accurate** and **complete** to the best of my knowledge. I also understand that **no action** will be taken on this application until the required information and notifications are submitted to the Division.

Note: Statement must be completed by an individual with managerial and/or supervisory capacity.

Jordan L. Kessler

Print or Type Name

Signature

October 30, 2018

Date

505-988-4421

Phone Number

jlkessler@hollandhart.com

e-mail Address



October 29, 2018

VIA HAND DELIVERY

Heather Riley
Oil Conservation Division
New Mexico Department of Energy,
Minerals and Natural Resources
1220 South Saint Francis Drive
Santa Fe, New Mexico 87505

Re: Application of Matador Production Company for administrative approval for off-lease measurement and approval to surface commingle (lease commingle) oil and gas production from the spacing units comprised of the S/2 of Section 36, Township 22 South, Range 27 East, the W/2 of Section 1, and the E/2 of Section 1, Township 23 South, Range 27 East, NMPM, Eddy County, New Mexico.

Dear Ms. Riley,

Matador Production Company (OGRID No. 228937) seeks administrative approval for off-lease measurement and approval to surface commingle (-lease) oil and gas production from the Purple Sage; Wolfcamp Gas Pool (98220) *from all existing and future wells and existing and future leases* drilled in the following areas of diverse ownership in S/2 of Section 36, Township 22 South, Range 27 East, the W/2 of Section 1, and the E/2 of Section 1, Township 23 South, Range 27 East, NMPM, Eddy County, New Mexico:

(a) The 320-acre spacing unit comprised of the S/2 of Section 36, Township 22 South, Range 27 East. This spacing unit is currently dedicated to the Scott Walker 36 22S 27E RB No. 204H Well (API No. 30-015-43162). This well produces from the Purple Sage; Wolfcamp Gas Pool (98220).

(b) The 320-acre spacing unit comprised of the W/2 of Section 1, Township 23 South, Range 27 East. This spacing unit is currently dedicated to the Larry Wolfish 01 23S 27E RB No. 204H Well (API No. 30-015-45269). This well will produce from the Purple Sage; Wolfcamp Gas Pool (98220). This spacing unit is subject to Division Order No. R-14854. *dedicated to E/2*

(c) The 320-acre spacing unit comprised of the E/2 of Section 1, Township 23 South, Range 27 East. This spacing unit is currently dedicated to the Larry Wolfish 01 23S 27E RB No. 206H Well (API No. 30-015-45270) and the Larry Wolfish 01 23S 27E RB No. 224H Well (API No. 30-015-45271). Both wells will produce from the Purple Sage; Wolfcamp Gas Pool (98220). This spacing unit is subject to Division Order No. R-14855.



Pursuant to NMAC 19.15.12.7, approved spacing units with diverse ownership are considered separate leases for surface commingling purposes. Matador seeks authority to surface commingle production according to the provisions of NMAC 19.15.12.10.C *from all existing and future wells* in these separate areas of diverse ownership at a surface facility located in the SW/4SW/4 (Unit M) of Section 36. Pursuant to 19.15.12.10(C)(4)(g), Matador also seeks authority to commingle production into the Longwood RB pipeline from future leases with notice provided only to interest owners within future leases. Prior to commingling, gas production from each well will be separately metered using individual test separators with calibrated orifice meters that are manufactured to AGA specifications. Oil production from each well will also be separately metered using a turbine meter.

Exhibit 1 is a land plat showing Matador's current development and gathering system in the subject area. The plat identifies the wellbores, the spacing units, and the common surface facility located in the SW/4SW/4 (Unit M) of Section 36. As depicted, the all lands are fee and state.

Exhibit 2 is a completed Application for Surface Commingling (Diverse Ownership) and Off-Lease Measurement Form C-107-B with a statement from Benjamin D. Peterson, P.E., identifying the facilities and the measurement devices to be utilized, a detailed schematic of the surface facilities (Exhibit A to the statement) and a referenced gas sample (Exhibit B to the statement).

Exhibit 3 is a C-102 for each of the wells currently permitted or drilled within the existing spacing units.

Exhibit 4 is a diagram of the surface facilities.

Exhibit 5 is a list of the interest owners affected by this request for approval to off-lease measure and surface commingle production. A copy of this application with all attachments has been sent by certified mail to all affected parties advising them that if they have an objection they must file it in writing with the division within 20 days from the date the Division receives Matador's application.

Exhibit 6 is the Affidavit of Publication.

Thank you for your attention to this matter and please feel free to call if you have any questions and require additional information.

Sincerely,

Jordan L. Kessler

**ATTORNEY FOR
MATADOR PRODUCTION COMPANY**

cc: New Mexico State Land Office

HOLLAND & HART LLP



Jordan L. Kessler
Associate

Phone (505) 988-4421

Fax (505) 983-6043

jlkessler@hollandhart.com

October 30, 2018

CERTIFIED MAIL
RETURN RECEIPT REQUESTED

TO: ALL AFFECTED PARTIES

Re: Application of Matador Production Company for administrative approval for off-lease measurement and approval to surface commingle (lease commingle) oil and gas production from the spacing units comprised of the S/2 of Section 36, Township 22 South, Range 27 East, the W/2 of Section 1, and the E/2 of Section 1, Township 23 South, Range 27 East, NMPM, Eddy County, New Mexico.

Ladies and Gentlemen:

Enclosed is a copy of the above-referenced amended application, which was filed with the New Mexico Oil Conservation Division on this date. Any objection to this application must be filed in writing within twenty days from this date at the Division's Santa Fe office located at 1220 South St. Francis Drive, Santa Fe, New Mexico 87505. If no objection is received within this twenty-day period, this application may be approved administratively by the Division.

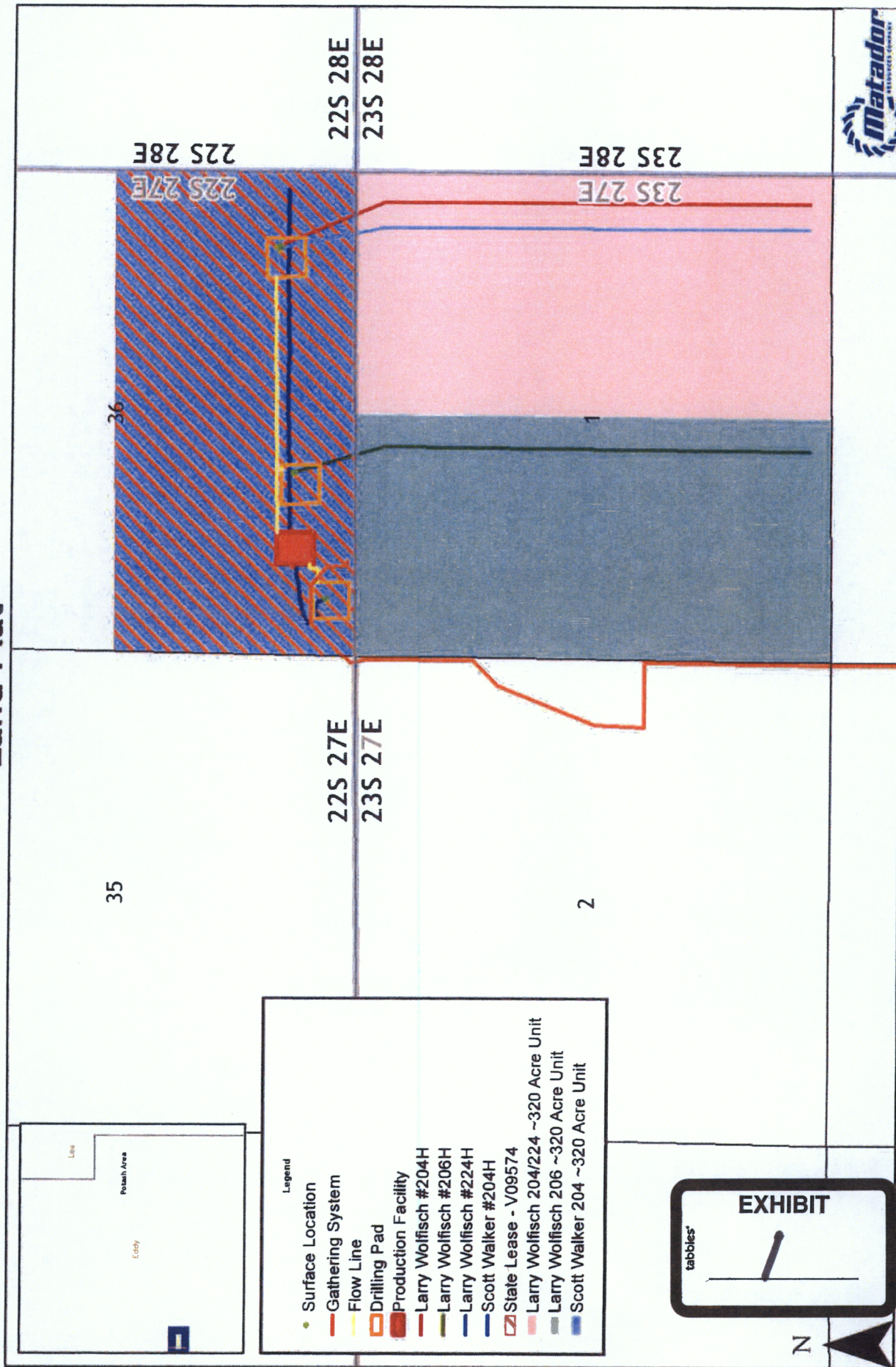
If you have any questions about this application, please contact the following:

Brian Fancher
Matador Production Company
972-371-5242
BFancher@matadorresources.com

Sincerely,

Jordan L. Kessler
ATTORNEY FOR
MATADOR PRODUCTION COMPANY

Larry Wolfisch / Scott Walker Land Plat



District I
1625 N. French Drive, Hobbs, NM 88240
District II
811 S. First St., Artesia, NM 88210
District III
1000 Rio Brazos Road, Aztec, NM 87410
District IV
1220 S. St Francis Dr, Santa Fe, NM
87505

State of New Mexico
Energy, Minerals and Natural Resources Department

Form C-107-B
Revised August 1, 2011

OIL CONSERVATION DIVISION
1220 S. St Francis Drive
Santa Fe, New Mexico 87505

Submit the original
application to the Santa Fe
office with one copy to the
appropriate District Office.

APPLICATION FOR SURFACE COMMINGLING (DIVERSE OWNERSHIP)

OPERATOR NAME: Matador Production Company

OPERATOR ADDRESS: 5400 LBJ Freeway Tower 1 Suite 1500 Dallas, TX 75240

APPLICATION TYPE:

☐ Pool Commingling ☒ Lease Commingling ☐ Pool and Lease Commingling ☐ Off-Lease Storage and Measurement (Only if not Surface Commingled)

LEASE TYPE: ☒ Fee ☒ State ☐ Federal

Is this an Amendment to existing Order? ☐ Yes ☒ No If "Yes", please include the appropriate Order No. _____

Have the Bureau of Land Management (BLM) and State Land office (SLO) been notified in writing of the proposed commingling

☒ Yes ☐ No

(A) POOL COMMINGLING

Please attach sheets with the following information

(I) Pool Names and Codes	Gravities / BTU of Non-Commingled Production	Calculated Gravities / BTU of Commingled Production		Calculated Value of Commingled Production	Volumes

(2) Are any wells producing at top allowables? ☐ Yes ☐ No

(3) Has all interest owners been notified by certified mail of the proposed commingling? ☐ Yes ☐ No.

(4) Measurement type: ☐ Metering ☐ Other (Specify)

(5) Will commingling decrease the value of production? ☐ Yes ☐ No If "yes", describe why commingling should be approved

(B) LEASE COMMINGLING

Please attach sheets with the following information

(1) Pool Name and Code- Purple Sage-Wolfcamp Gas Pool (Gas) Code: 98220

(2) Is all production from same source of supply? ☒ Yes ☐ No

(3) Has all interest owners been notified by certified mail of the proposed commingling? ☒ Yes ☐ No

(4) Measurement type: ☒ Metering ☐ Other (Specify)

(C) POOL and LEASE COMMINGLING

Please attach sheets with the following information

(1) Complete Sections A and E.

(D) OFF-LEASE STORAGE and MEASUREMENT

Please attach sheets with the following information

(1) Is all production from same source of supply? ☐ Yes ☐ No

(2) Include proof of notice to all interest owners.

(E) ADDITIONAL INFORMATION (for all application types)

Please attach sheets with the following information

(1) A schematic diagram of facility, including legal location.

(2) A plat with lease boundaries showing all well and facility locations. Include lease numbers if Federal or State lands are involved.

(3) Lease Names, Lease and Well Numbers, and API Numbers.

I hereby certify that the information above is true and complete to the best of my knowledge and belief.

SIGNATURE: Ben Peterson

TITLE: Senior Production Engineer

DATE: 10/15/18

TYPE OR PRINT NAME Ben Peterson

TELEPHONE NO.: (972) 371-5427

E-MAIL ADDRESS: bpeterson@matadorresources.com

EXHIBIT

tabbles

2

Matador Production Company

One Lincoln Centre • 5400 LBJ Freeway • Suite 1500 • Dallas, Texas 75240

Voice 972.371.5427 • Fax 972.371.5201

bpeterson@matadorresources.com

Benjamin D. Peterson, P.E.
Senior Production Engineer

October 15, 2018

New Mexico Oil Conservation Division
1220 South St. Francis Drive
Santa Fe, NM 87505

Re: Application of Matador Production Company for the spacing units comprising the S/2 of Section 36, Township 22 South, Range 27 East, and Section 1, Township 23 South, Range 27 East, NMPM, Eddy County, New Mexico (the "Lands")

To Whom This May Concern,

Matador Production Company ("Matador"), OGRID: 228937, requests to commingle current oil and gas production from four (4) distinct wells located on the Lands and future production from the Lands as described herein. All wells will be metered through individual test separators with an oil turbine meter and gas orifice meter. The gas commingling will occur after individual measurement at each well. Gas exiting each well test flows into one gathering line, as depicted on **Exhibit A**, the Longwood RB Pipeline, LLC line. Each well on the Lands will have its own test separator with an orifice meter manufactured and assembled in accordance with American Gas Association (AGA) specifications. All primary and secondary Electronic Flow Measurement (EFM) equipment is tested and calibrated by a reputable third party measurement company in accordance with industry specifications.

The orifice meter is the preferred measurement device utilized by midstream and E&P companies in natural gas measurement. The gas samples are obtained at the time of the meter testing/calibration and the composition and heating value are determined by a laboratory in accordance with American Petroleum Institute (API) specifications to ensure accurate volume and Energy (MMBTU) determinations. See example from Fesco Laboratory attached as **Exhibit B** hereto.

The flow stream from each wellhead is demonstrated in the Process Flow Diagram (PFD) attached as **Exhibit A** hereto. The PFD shows that the water, oil, and gas leave the wellbore and flow into a wellhead test separator which separates the oil, gas, and water. The oil is measured via turbine meter which is calibrated periodically in accordance with industry specifications by a third party measurement company for accuracy. The gas is measured on a volume and MMBTU basis by an orifice meter and supporting EFM equipment in accordance with American Petroleum Association (API) Chapter 21.1. The gas is then sent into a gathering line where it is commingled with each of

the other wells' metered gas. The gathering line gas is then metered by another orifice meter at the tank battery check to show the total volume of gas leaving the Tank Battery. This meter is tested and calibrated in accordance with industry specifications and volume and energy are determined on an hourly, daily, and monthly basis. Once the gas exits this final tank battery sales check it travels directly into a third party sales connect meter. Longwood RB Pipeline, LLC has its own orifice meter that measures the gas for custody transfer. These meters are also calibrated periodically to ensure the measurement accuracy.

In conclusion, all the oil and gas produced on the Lands is and will be metered at each wellhead and allocated correctly using the same measurement equipment as the pipeline sales measurement specifications accepted by API as industry standard.

Very truly yours,

MATADOR PRODUCTION COMPANY

A handwritten signature in black ink, appearing to read 'B. Peterson', with a stylized flourish at the end.

Benjamin D. Peterson, P.E.
Sr. Production Engineer

District I
1625 N. French Dr., Hobbs, NM 88240
Phone: (575) 393-6161 Fax: (575) 393-0720
District II
811 S. First St., Artesia, NM 88210
Phone: (575) 748-1283 Fax: (575) 748-9720
District III
1000 Rio Brazos Road, Aztec, NM 87410
Phone: (505) 334-6178 Fax: (505) 334-6170
District IV
1220 S. St. Francis Dr., Santa Fe, NM 87505
Phone: (505) 476-3460 Fax: (505) 476-3462

State of New Mexico
Energy, Minerals & Natural Resources
Department
OIL CONSERVATION DIVISION
1220 South St. Francis Dr.
Santa Fe, NM 87505

NM OIL CONSERVATION
ARTESIA DISTRICT

FORM C-102

Revised August 1, 2011

SEP 25 2018

Submit one copy to appropriate

District Office

RECEIVED

☐ AMENDED REPORT

WELL LOCATION AND ACREAGE DEDICATION PLAT

¹ API Number 30-015-45269	² Pool Code 98220	³ Pool Name PURPLE SAGE;WOLFCAMP (GAS)
⁴ Property Code 322480	⁵ Property Name LARRY WOLFISH 01-23S-27E RB	⁶ Well Number #204H
⁷ OCRID No. 228937	⁸ Operator Name MATADOR PRODUCTION COMPANY	⁹ Elevation 3069'

¹⁰Surface Location

UL or lot no.	Section	Township	Range	Lot Idn	Feet from the	North/South line	Feet from the	East/West line	County
P	36	22-S	27-E	-	830'	SOUTH	836'	EAST	EDDY

¹¹Bottom Hole Location If Different From Surface

UL or lot no.	Section	Township	Range	Lot Idn	Feet from the	North/South line	Feet from the	East/West line	County
P	1	23-S	27-E	-	240'	SOUTH	339'	EAST	EDDY

¹² Dedicated Acres 320.05	¹³ Joint or Infill	¹⁴ Consolidation Code	¹⁵ Order No.
--	-------------------------------	----------------------------------	-------------------------

No allowable will be assigned to this completion until all interests have been consolidated or a non-standard unit has been approved by the division.

<p>16</p> <p>35 36 2 1</p> <p>SURFACE HOLE LOCATION NEW MEXICO EAST NAD 1983 X=601823 Y=488942 LAT.: N 32.3440220 LONG.: W 104.1374768 NAD 1927 X=580641 Y=488863 LAT.: N 32.3439024 LONG.: W 104.1369781</p> <p>FIRST PERFORATION POINT NEW MEXICO EAST NAD 1983 X=602313 Y=487788 LAT.: N 32.3408471 LONG.: W 104.1358955 NAD 1927 X=581131 Y=487729 LAT.: N 32.3407274 LONG.: W 104.1353969</p> <p>BOTTOM HOLE LOCATION NEW MEXICO EAST NAD 1983 X=602267 Y=483053 LAT.: N 32.3278294 LONG.: W 104.1380729 NAD 1927 X=581085 Y=482993 LAT.: N 32.3277096 LONG.: W 104.1355747</p> <p>LAST PERFORATION POINT NEW MEXICO EAST NAD 1983 X=602268 Y=483143 LAT.: N 32.3280768 LONG.: W 104.1380695 NAD 1927 X=561086 Y=483083 LAT.: N 32.3279570 LONG.: W 104.1355713</p>	<p>17 OPERATOR CERTIFICATION</p> <p>I hereby certify that the information contained herein is true and complete to the best of my knowledge and belief, and that this organization either owns a working interest or undivided mineral interest in the land including the proposed bottom hole location or has a right to drill this well of this location pursuant to a contract with an owner of such a mineral or working interest, or to a voluntary pooling agreement or a compulsory pooling order heretofore entered by the division.</p> <p><i>Sara Hartsfield</i> 9/21/18 Signature Date</p> <p>Sara Hartsfield Printed Name</p> <p>shartsfield@matadorresources.com E-mail Address</p> <p>18 SURVEYOR CERTIFICATION</p> <p>I hereby certify that the well location shown on this plat was plotted from field notes of actual surveys made by me or under my supervision, and that the same is true to the best of my belief.</p> <p>03/31/2018 Date of Survey</p> <p>Signature and Seal of Professional Surveyor</p> <p>18329</p> <p>PROFESSIONAL SURVEYOR</p> <p>CartRoute Number</p>
---	--

B:\SURVEY\MATADOR_RESOURCES\LARRY_WOLFISH_01-23S-27E\FINAL_PRODUCT\BLO_LARRY_WOLFISH_01-23S-27E_RB_204H_NEV2

EXHIBIT

tabbies

3

RWP 9-27-18

District I
1625 N. French Dr., Hobbs, NM 88240
Phone: (575) 393-6161 Fax: (575) 393-0720
District II
811 S. First St., Artesia, NM 88210
Phone: (575) 748-1283 Fax: (575) 748-9720
District III
1000 Rio Brazos Road, Aztec, NM 87410
Phone: (505) 334-6178 Fax: (505) 334-6170
District IV
1220 S. St. Francis Dr., Sante Fe, NM 87505
Phone: (505) 476-3460 Fax: (505) 476-3462

State of New Mexico
Energy, Minerals & Natural Resources
Department
OIL CONSERVATION DIVISION
1220 South St. Francis Dr.
Sante Fe, NM 87505

FORM C-102
Revised August 1, 2011
Submit one copy to appropriate
District Office

☒ AMENDED REPORT

WELL LOCATION AND ACREAGE DEDICATION PLAT

¹ API Number 30-015-43162	² Pool Code 98220	³ Pool Name PURPLE SAGE-WOLFCAMP GAS POOL
⁴ Property Code 314893	⁵ Property Name SCOTT WALKER 36 22S 27E RB	
⁷ OGRID No. 228937	⁶ Operator Name MATADOR PRODUCTION COMPANY	⁸ Well Number #204H ⁹ Elevation 3076'

¹⁰Surface Location

UL or lot no.	Section	Township	Range	Lot Idn	Feet from the	North/South line	Feet from the	East/West line	County
M	36	22-S	27-E	-	330'	SOUTH	635'	WEST	EDDY

UL or lot no.	Section	Township	Range	Lot Idn	Feet from the	North/South line	Feet from the	East/West line	County
P	36	22-S	27-E	-	724'	SOUTH	231'	EAST	EDDY

¹² Dedicated Acres	¹³ Joint or Infill	¹⁴ Consolidation Code	¹⁵ Order No.
-------------------------------	-------------------------------	----------------------------------	-------------------------

No allowable will be assigned to this completion until all interests have been consolidated or a non-standard unit has been approved by the division.

¹⁶ <div style="display: flex; justify-content: space-between;"> <div> <p>SURFACE LOCATION NEW MEXICO EAST NAD 1927 X=556768 Y=488337 LAT.: N 32.3424194 LONG.: W 104.1495228</p> </div> <div> <p>BOTTOM HOLE LOCATION NEW MEXICO EAST NAD 1927 X=561246 Y=488784 LAT.: N 32.3436280 LONG.: W 104.1350206 MD= 13760'</p> </div> </div>			¹⁷ OPERATOR CERTIFICATION <p>I hereby certify that the information contained herein is true and complete to the best of my knowledge and belief, and that this organization either owns a working interest or unleased mineral interest in the land including the proposed bottom hole location or has a right to drill this well at this location pursuant to a contract with an owner of such a mineral or working interest, or to a voluntary pooling agreement or a compulsory pooling order heretofore entered by the division.</p> <p><i>Chris Carleton</i> 2/21/17 Signature Date</p> <p>Chris Carleton Printed Name</p> <p>ccarleton@matadorresources.com E-mail Address</p>	
<div style="display: flex; justify-content: space-around;"> <div> <p>PENETRATION POINT NEW MEXICO EAST NAD 1927 X=556681 Y=488614 LAT.: N 32.3431815 LONG.: W 104.1498000 MD = 9129'</p> </div> <div> <p>FIRST TAKE POINT NEW MEXICO EAST NAD 1927 X=557048 Y=488670 LAT.: N 32.3433356 LONG.: W 104.1486142 MD = 9547'</p> </div> <div> <p>LAST TAKE POINT NEW MEXICO EAST NAD 1927 X=561101 Y=488783 LAT.: N 32.3436260 LONG.: W 104.1354877 MD = 13615'</p> </div> </div>			¹⁸ SURVEYOR CERTIFICATION <p>I hereby certify that the well location shown on this plat was plotted from field notes of actual surveys made by me or under my supervision, and that the same is true to the best of my belief.</p> <p>05/28/2015 Date of Survey</p> <p><i>Michael B. Brown</i> Signature and Seal of Professional Surveyor</p> <p>18329 Certificate Number</p>	

**NM OIL CONSERVATION
ARTESIA DISTRICT**

SEP 26 2018

FORM C-102

Revised August 1, 2011

RECEIVED

Submit one copy to appropriate

District Office



AMENDED REPORT

District I
1625 N. French Dr., Hobbs, NM 88240
Phone: (575) 393-6161 Fax: (575) 393-0720
District II
811 S. First St., Artesia, NM 88210
Phone: (575) 748-1283 Fax: (575) 748-9720
District III
1000 Rio Brazos Road, Aztec, NM 87410
Phone: (505) 334-6178 Fax: (505) 334-6170
District IV
1220 S. St. Francis Dr., Santa Fe, NM 87505
Phone: (505) 476-3460 Fax: (505) 476-3462

State of New Mexico
Energy, Minerals & Natural Resources
Department
OIL CONSERVATION DIVISION
1220 South St. Francis Dr.
Santa Fe, NM 87505

WELL LOCATION AND ACREAGE DEDICATION PLAT

¹ API Number 30-015-45270	² Pool Code 98220	³ Pool Name PURPLE SAGE; WOLFCAMP (GAS)
⁴ Property Code 322480	⁵ Property Name LARRY WOLFISH 01-23S-27E RB	⁶ Well Number #206H
⁷ GRID No. 228937	⁸ Operator Name MATADOR PRODUCTION COMPANY	⁹ Elevation 3073'

¹⁰Surface Location

UL or lot no.	Section	Township	Range	Lot Idn	Feet from the	North/South line	Feet from the	East/West line	County
N	36	22-S	27-E	-	680'	SOUTH	2015'	WEST	EDDY

¹¹Bottom Hole Location If Different From Surface

UL or lot no.	Section	Township	Range	Lot Idn	Feet from the	North/South line	Feet from the	East/West line	County
N	1	23-S	27-E	-	240'	SOUTH	2344'	WEST	EDDY

¹² Dedicated Acres 320.19	¹³ Joint or Infill	¹⁴ Consolidation Code	¹⁵ Order No.
--	-------------------------------	----------------------------------	-------------------------

No allowable will be assigned to this completion until all interests have been consolidated or a non-standard unit has been approved by the division.

	SURFACE LOCATION NEW MEXICO EAST NAD 1927 X=558155 Y=488703 LAT.: N 32.3434208 LONG.: W 104.1450289 NAD 1983 X=599337 Y=488763 LAT.: N 32.3435403 LONG.: W 104.1455279	¹⁷OPERATOR CERTIFICATION I hereby certify that the information contained herein is true and complete to the best of my knowledge and belief, and that this organization either owns a working interest or undivided mineral interest in the land including the proposed bottom hole location or has a right to drill this well of this location pursuant to a contract with an owner of such a mineral or working interest, or to a voluntary pooling agreement or a compulsory pooling order heretofore entered by the division. <i>Sara Hartsfield</i> 9/21/18 Signature Date Sara Hartsfield Printed Name shartsfield@matadorresources.com E-mail Address
	FIRST PERFORATION POINT NEW MEXICO EAST NAD 1927 X=558451 Y=487697 LAT.: N 32.3406522 LONG.: W 104.1440754 NAD 1983 X=599633 Y=487756 LAT.: N 32.3407718 LONG.: W 104.1445742	¹⁸SURVEYOR CERTIFICATION I hereby certify that the well location shown on this plat was plotted from field notes of actual surveys made by me or under my supervision, and that the same is true to the best of my belief. Date of Survey Signature and Seal Certificate Number
	BOTTOM HOLE LOCATION NEW MEXICO EAST NAD 1927 X=558424 Y=482984 LAT.: N 32.3276960 LONG.: W 104.1441898 NAD 1983 X=599606 Y=483043 LAT.: N 32.3278157 LONG.: W 104.1446882	

S:\SURV\MATADOR_RESOURCES\LARRY_WOLFISH_01-23S-27E\FINAL_PRODUCT\SLD_LARRY_WOLFISH_01-23S-27E_RB_208M_REV1.DWG 3/27/18 3:18 07 PAM bpgary

RWP 9-27-18

District I
1625 N. French Dr., Hobbs, NM 88240
Phone: (575) 393-6161 Fax: (575) 393-0720
District II
811 S. First St., Artesia, NM 88210
Phone: (575) 748-1283 Fax: (575) 748-9720
District III
1000 Rio Arizos Road, Aztec, NM 87410
Phone: (505) 334-6178 Fax: (505) 334-6170
District IV
1220 S. St. Francis Dr., Santa Fe, NM 87505
Phone: (505) 476-3460 Fax: (505) 476-3462

State of New Mexico
Energy, Minerals & Natural Resources
Department
OIL CONSERVATION DIVISION
1220 South St. Francis Dr.
Santa Fe, NM 87505

NM OIL CONSERVATION
ARTESIA DISTRICT

FORM C-102

Revised August 1, 2011

Submit one copy to appropriate

District Office

SEP 25 2018

AMENDED REPORT

RECEIVED

WELL LOCATION AND ACREAGE DEDICATION PLAT

¹ API Number 30-015-45271	² Pool Code 98220	³ Pool Name PURPLE SAGE; WOLFCAMP (GAS)
⁴ Property Code 322480	⁵ Property Name LARRY WOLFISH 01-23S-27E RB	⁶ Well Number #224H
⁷ GRID No. 228937	⁸ Operator Name MATADOR PRODUCTION COMPANY	⁹ Elevation 3069'

¹⁰Surface Location

UL or lot no.	Section	Township	Range	Lot Idn	Feet from the	North/South line	Feet from the	East/West line	County
P	36	22-S	27-E	-	830'	SOUTH	866'	EAST	EDDY

¹¹Bottom Hole Location If Different From Surface

UL or lot no.	Section	Township	Range	Lot Idn	Feet from the	North/South line	Feet from the	East/West line	County
P	1	23-S	27-E	-	240'	SOUTH	619'	EAST	EDDY

¹² Dedicated Acres 320.05	¹³ Joint or Infill	¹⁴ Consolidation Code	¹⁵ Order No.
--	-------------------------------	----------------------------------	-------------------------

No allowable will be assigned to this completion until all interests have been consolidated or a non-standard unit has been approved by the division.

<p>16</p> <p>SURFACE LOCATION NEW MEXICO EAST NAD 1927 X=560611 Y=488883 LAT.: N 32.3439019 LONG.: W 104.1370751 NAD 1983 X=601793 Y=488942 LAT.: N 32.3440215 LONG.: W 104.1375738</p> <p>FIRST PERFORATION POINT NEW MEXICO EAST NAD 1927 X=560851 Y=487726 LAT.: N 32.3407196 LONG.: W 104.1363037 NAD 1983 X=602033 Y=487785 LAT.: N 32.3408392 LONG.: W 104.1368023</p> <p>BOTTOM HOLE LOCATION NEW MEXICO EAST NAD 1927 X=560805 Y=482992 LAT.: N 32.3277082 LONG.: W 104.1364813 NAD 1983 X=601987 Y=483052 LAT.: N 32.3278280 LONG.: W 104.1369794</p>		<p>17 OPERATOR CERTIFICATION I hereby certify that the information contained herein is true and complete to the best of my knowledge and belief, and that this organization either owns a working interest or undrained mineral interest in the land including the proposed bottom hole location or has a right to drill this well of this location pursuant to a contract with an owner of such a mineral or working interest, or to a voluntary pooling agreement or a compulsory pooling order heretofore entered by the division.</p> <p><i>Sara Hartsfield</i> 9/21/18 Signature Date</p> <p>Sara Hartsfield Printed Name</p> <p>shartsfield@matadorresources.com E-mail Address</p> <p>18 SURVEYOR CERTIFICATION I hereby certify that the well location shown on this plat was plotted from field notes of actual surveys made by me or under my supervision, and that the same is true to the best of my belief.</p> <p>04/08/2018 Date of Survey Signature and Seal of Professional Surveyor <i>Michael Brown</i> MICHAEL BROWN NEW MEXICO 18329 PROFESSIONAL SURVEYOR Certificate Number</p>
--	--	--

S:\SURVEY\MATADOR_RESOURCES\LARRY_WOLFISH_01-23S-27E\FINAL_PRODUCT\SILO_LARRY_WOLFISH_01-23S-27E_RB_224H_NEV2 UWD 5/2/2018 3:10:30 PM Gregory

RNF 9-27-18

October 03, 2015

FESCO, Ltd.
1100 Fesco Ave. - Alice, Texas 78332

For: Matador Production Company
One Lincoln Centre
5400 LBJ Freeway, Suite 1500
Dallas, Texas 75240

Sample: Scott Walker 36 22S 27E RB No. 204H
First Stage Separator Gas
Sampled @ 240 psig & 115 °F

Date Sampled: 09/25/15

Job Number: 54304.011

CHROMATOGRAPH EXTENDED ANALYSIS - GPA 2286

COMPONENT	MOL%	GPM
Hydrogen Sulfide*	< 0.001	
Nitrogen	0.980	
Carbon Dioxide	0.047	
Methane	74.384	
Ethane	13.178	3.504
Propane	6.638	1.818
Isobutane	0.872	0.284
n-Butane	1.997	0.626
2-2 Dimethylpropane	0.014	0.005
Isopentane	0.456	0.166
n-Pentane	0.492	0.177
Hexanes	0.385	0.158
Heptanes Plus	<u>0.557</u>	<u>0.229</u>
Totals	100.000	6.967

Computed Real Characteristics Of Heptanes Plus:

Specific Gravity ----- 3.398 (Air=1)
Molecular Weight ----- 98.01
Gross Heating Value ----- 5069 BTU/CF

Computed Real Characteristics Of Total Sample:

Specific Gravity ----- 0.775 (Air=1)
Compressibility (Z) ----- 0.9958
Molecular Weight ----- 22.36
Gross Heating Value
Dry Basis ----- 1332 BTU/CF
Saturated Basis ----- 1309 BTU/CF

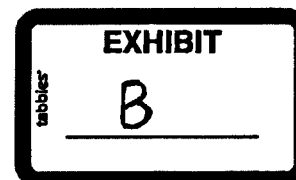
*Hydrogen Sulfide tested on location by: Stain Tube Method (GPA 2377)
0.126 Gr/100 CF, 2.0 PPMV or 0.0002 Mol%

Base Conditions: 14.650 PSI & 60 Deg F

Sampled By: (24) M. Thane
Analyst: HB
Processor: RG
Cylinder ID: T-1440

Certified: FESCO, Ltd. - Alice, Texas

David Dannhaus 361-661-7015



CHROMATOGRAPH EXTENDED ANALYSIS - GPA 2286
TOTAL REPORT

COMPONENT	MOL %	GPM	WT %
Hydrogen Sulfide*	< 0.001		< 0.001
Nitrogen	0.980		1.228
Carbon Dioxide	0.047		0.093
Methane	74.384		53.372
Ethane	13.178	3.504	17.724
Propane	6.638	1.818	13.092
Isobutane	0.872	0.284	2.267
n-Butane	1.997	0.626	5.192
2,2 Dimethylpropane	0.014	0.005	0.045
Isopentane	0.456	0.166	1.472
n-Pentane	0.492	0.177	1.588
2,2 Dimethylbutane	0.006	0.002	0.023
Cyclopentane	0.000	0.000	0.000
2,3 Dimethylbutane	0.039	0.016	0.150
2 Methylpentane	0.118	0.049	0.455
3 Methylpentane	0.063	0.026	0.243
n-Hexane	0.159	0.065	0.613
Methylcyclopentane	0.075	0.026	0.282
Benzene	0.012	0.003	0.042
Cyclohexane	0.090	0.030	0.339
2-Methylhexane	0.021	0.010	0.094
3-Methylhexane	0.023	0.010	0.103
2,2,4 Trimethylpentane	0.000	0.000	0.000
Other C7's	0.065	0.028	0.288
n-Heptane	0.051	0.023	0.229
Methylcyclohexane	0.079	0.032	0.347
Toluene	0.015	0.005	0.062
Other C8's	0.061	0.028	0.301
n-Octane	0.018	0.009	0.092
Ethylbenzene	0.001	0.000	0.005
M & P Xylenes	0.007	0.003	0.033
O-Xylene	0.002	0.001	0.009
Other C9's	0.023	0.012	0.130
n-Nonane	0.005	0.003	0.029
Other C10's	0.006	0.003	0.038
n-Decane	0.002	0.001	0.013
Undecanes (11)	<u>0.001</u>	<u>0.001</u>	<u>0.007</u>
Totals	100.000	6.967	100.000

Computed Real Characteristics Of Total Sample:

Specific Gravity	0.775	(Air=1)
Compressibility (Z)	0.9958	
Molecular Weight	22.36	
Gross Heating Value		
Dry Basis	1332	BTU/CF
Saturated Basis	1309	BTU/CF

Alliance Land and Minerals, LLC
1762 Queen Hwy.
Carlsbad, NM 88220

Amy Edith Boyd, as her separate property
27 Crows Nest Lane, Unit 16C
Danbury, CT 06810

Anne Boyd Newtown, as her separate property
1920 Addison Road
Houston, Texas 77030

Anne Marie Hagerman Wall, as her separate property
2520 S Steele Street
Denver, CO 80210

Aurelio Murrillo and wife, Olivia Murillo
1503 W Green
Carlsbad, NM 88220

B&G Royalties
PO Box 376
Artesia, NM 88211

Barbara Lee Backman, Inc.
510 W. Riverside Ave, Suite 400
Spokane, WA 99201

Belen Hernandez, as her separate property
1905 Howard Rd.
Carlsbad, NM 88220

Bennie Rodriguez, Jr., as his separate property
4203 E. Derrick Rd.
Carlsbad, NM 88220

Big Three Energy Group, LLC
PO Box 429
Roswell, NM 88202

Boe Norton and wife, Jeana Norton
2556 Pecos Highway
Carlsbad, NM 88220

Brandon Munoz
P.O. Box 1954
Carlsbad, NM 88220

Brett Guitar Witherspoon, as his sole and separate property
P.O. Box 100635
Fort Worth, TX 76185

Brian C. Reid and Katherine A. Reid, husband and wife
2592 Camarie
Midland, TX 79705

Caki Family Limited Partnership
3721 Pallos Verdas
Dallas, TX 75229

Camarie Oil & Gas, LLC
2502 Camarie Ave
Midland, TX 79705

Caren G. Lucas, as her separate property
P.O. Box 90621
Austin, TX 78709

Caren Gall Lucas Exempt Trust
P.O. Box 90621
Austin, TX 78709

Carl D. McKinley and wife, Elizabeth C. McKinley
409 S Ash
Carlsbad, NM 88220

Carla Losoya, as her separate property
408 Juarez
Carlsbad, NM 88220

Charles Nathan Hagerman, as his separate property
6455 W 31st Avenue
Wheat Ridge, CO 80214

Chi Energy, Inc.
P. O. Box 1799
Midland, TX 79702



Claude Sapien, Jr., as his sole and separate property
4141 Stryker Road
Las Cruces, NM 88005

CrownRock Minerals, LP
P.O. Box 50820
Midland, TX 79710

Curtis Dale Boyd, as his separate property
2317 Marvis Hass Blvd.
Clovis, NM 88101

Daniel Bryce Munoz, as his separate property
6613 Village Springs Dr.
Plano, TX 75024

DSD Energy Resources, LLC
P. O. Box 229
Fort Worth, TX 76101

Earl B. Guitar Jr. and Margaret Ann Guitar
Revocable Trust
P.O. Box 748
Abilene, TX 79604

Eduardo A. Rodriguez, as his separate property
PO Box 744
Hobbs, NM 88241

Elidia Ballestores, whose marital status is unknown
5941 W Hubbell
Phoenix, AZ 85035

Elvira Sapien Martinez, as her separate property
114 S Cecil
Hobbs, NM 88240

Estate of Claudio L. Sapien
2710 Dona Ana
Carlsbad, NM 88220

Estate of Ernest A. Rodriguez
511 S. Alameda
Carlsbad, NM 88220

Estate of Irene Ruiz
8253 Avenue 304
Visalia, CA 93277

Estate of Isaac Espinoza, deceased
4425 East Derrick Road
Carlsbad, NM 88220

Featherstone Development Corporation
P.O. Box 429
Roswell, NM 88202

First Financial Trust & Asset Management
Company, N.A., Trustee of the Cynthia Rhodes
Trust
PO Box 701
Abilene, Texas 79604

Fort Worth Mineral Company, LLC
500 Main Street, Ste 1200
Fort Worth, TX 76102

Free Ride, LLC
133 Beekman Street, Third Floor
New York, NY 10038

Gary Armendariz
4225 E Derrick Road
Carlsbad, NM 88220

George Rodriguez, as his separate property
11942 Hillbrook Drive
Houston, TX 77070

Gerald Rodriguez, as his separate property
PO Box 853
Carlsbad, NM 88221

Guadalupe Land & Minerals, LLC
17521 Arratia Ave
El Paso, TX 79938

Guitar Galusha, LP
P.O. Box 1438
Abilene, TX 79604

Guitar Land & Cattle Company, LP
P.O. Box 2213
Abilene, TX 79604

Guitar Land & Cattle, LP
P.O. Box 2213
Abilene, TX 79604

Guy Pittman Witherspoon, III, as his sole and
separate property
4704 BIRCHMAN AVENUE
FT. Worth, TX 76107

Ide Losoya, as her separate property
702 Jason Street
Carlsbad, NM 88220

Jack G. Woods, Jr., as his separate property
P.O. Box 341342
Austin, TX 78734

Janice Rodriguez, as her separate property
PO Box 136
Loving, NM 88256

Jeri Alexander Magnum, Trustee of the Carol
Gibson Trust
PO Box 701
Abilene, TX 79604

JMA Oil Properties, Ltd.
P O Box 58
Abilene, TX 79604

John E. Munoz, Sr. and wife, Maria J. Munoz, as
joint tenants
4507 E. Derrick
Carlsbad, NM 88220

John Guitar Witherspoon, Jr., as his sole and
separate property
3104 NORTH SIXTH STREET
McAllen, TX 78501

John Kelly Guitar, as his separate property
P.O. Box 1121
Clyde, TX 79510

John W. Qualls, whose marital status is
unknown
5316 Sherwood Drive
Midland, TX 79707

Josephine Armendarez, as her separate
property
4225 E Derrick Dr.
Carlsbad, NM 88220

JPH Holdings, LP
633 Rankin Circle North
Houston, TX 77073

Juanita Navarrette, as her separate property
4411 Derrick Road
Carlsbad, NM 88220

Juanita Sapien, a widow, as her separate
property
4228 Brantley Rd.
Carlsbad, NM 88220

Judy Guitar Uhey, as her sole and separate
property
PO Box 632
Elizabethtown, KY 42702

Judy Parker, as her separate property
PO Box 329
Loving, NM 88256

Kelly Woods Leach, as her separate property
4610 8th Street
Lubbock, TX 76416 /
312 Greatview Circle
Birmingham, AL 35226

Laura Jane Boyd, as her separate property
2003 Kerry Dr
Arlington, TX 76013

Laura Jean Hofer Trust
11248 South Turner Ave.
Ontario, CA 91761

Lesli Rebecca Guitar Nichols, as her separate
property
P.O. Box 327
Big Spring, Texas 79721

Leslie David Guitar, as his separate property
P.O. Box 1466
Medina, TX 78055 /
P.O. Box 2228
Brownwood, TX 76804

Lino A. Rodriguez, as his separate property
1005 Florida St. SE
Albuquerque, NM 87108

Madison M. Hinkle and wife, Susan Hinkle
PO Box 2292
Roswell, NM 88202

Marathon Oil Permian, LLC
5555 San Felipe St
Houston, TX 77056

Marcelo Navarrette and wife, Erminia
Navarrette
2710 Dona Ana
Carlsbad, NM 88220

Margaret McClure (f/k/a Margaret Roberson),
as her separate property C/O Lee Roberson
3305 North Grimes
Hobbs, NM 88240

Mario Munoz, Jr., as his separate property
P.O. Box 274
Carlsbad, NM 88221

Mark Munoz, as his separate property
PO Box 274
Carlsbad, NM 88221

Martin S. Calderon, whose marital status is
unknown
1906 Howard Road
Carlsbad, NM 88220

Mary Helen R. Ruiz, as her separate property
4414 S. Travis
Armarillo, TX 79110

Mary Munoz, as her separate property
PO Box 274
Carlsbad, NM 88221

Matt Norton and wife, Lisa Norton
PO Box 435
Manassa, CO 81141

Matthew Munoz, as his separate property
PO Box 274
Carlsbad, NM 88221

Melanie Elias, as Joint Tenant of Melissa Elias
107 N. Bentwood Dr.
Midland, TX 79703

Melissa Elias, as Joint Tenant of Melanie Elias
107 N. Bentwood Dr.
Midland, TX 79703

Melissa McGee, as her sole and separate
property
PO Box 334
Buffalo Gap, TX 79508

MRC Permian Company
5400 LBJ Freeway, Suite 1500
Dallas, TX 75240

Murchison-Guitar Family LP
P.O. Box 712
Red Bluff, CA 96080

Natividad Dominguez, as her separate property
4419 East Derrick Road
Carlsbad, NM 88220

Oak Valley Mineral and Land, LP
P.O. Box 50820
Midland, TX 79710

Otilia R. Bonilla, as her separate property
PO Box 31983
Amarillo, TX 79120

Panhandle Properties, LLC
P.O. Box 647
Artesia, NM 88211

Pedro M. Sapien, Sr., whose marital status is
unknown
501 South Ash Street
Carlsbad, NM 88220

Polk Land & Minerals, LP
1101 Butternut St
Abilene, TX 79602

Pressley Hudson Guitar, as his separate
property
PO Box 20485
Dallas, TX 75220

Priscilla A. Armendariz Ridenour, a single
woman
406 Mariposa
Carlsbad, NM 88220

Priscilla Rodriguez, as her separate property
201 Cleveland
Artesia, NM 88210

Rachel G. Martin, Robert G. Rodriguez, Ruben
G. Rodriguez, Rosemary G. Zapata, and Rodolfo
G. Rodriguez Jr., all surviving joint tenants of
Rodney G. Rodriguez, deceased
210 West Riverside, Apt 33
Carlsbad, NM 88220

Rachel G. Martin, Robert G. Rodriguez, Ruben
G. Rodriguez, Rosemary G. Zapata, and Rodolfo
G. Rodriguez Jr., all surviving joint tenants of
Rodney G. Rodriguez, deceased
4203 East Derrick Road
Carlsbad, NM 88220

Rachel G. Martin, Robert G. Rodriguez, Ruben
G. Rodriguez, Rosemary G. Zapata, and Rodolfo
G. Rodriguez Jr., all surviving joint tenants of
Rodney G. Rodriguez, deceased
4312 Hillshire Ct
Plano, TX 75023

Rachel G. Martin, Robert G. Rodriguez, Ruben
G. Rodriguez, Rosemary G. Zapata, and Rodolfo
G. Rodriguez Jr., all surviving joint tenants of
Rodney G. Rodriguez, deceased
816 Caballo Road
Carlsbad, NM 88220

Raul Arturo Gamboa and Valdrie Lara, as joint
tenants
6011 Ruiz Road
Carlsbad, NM 88220

Raul Rodriguez, as his separate property
1502 Hill Street
Carlsbad, NM 88220

Raul Rodriguez, Jr., as his separate property
6011 Ruiz Road
Carlsbad, NM 88220

Raymond A. Rodriguez, as his separate property
11945 Oak Abbey
El Paso, TX 79938

Richardson Mineral & Royalty, LLC
105 West 3rd Street #309
Roswell, NM 88201

RKI Exploration & Production, LLC
3500 One Williams Center
Tulsa, OK 74172

Roadrunner Oil and Gas, LLC
PO Box 101415
Fort Worth, Texas 76185

Roberson Minerals, LLC
6016 N Fowler Street
Hobbs, NM 88240

Robert Cooper Walton, as his separate property
3443 New Hope Place
The Villages, Florida 32162

Robert Joe Rodriguez, Jr., as his separate property
81 Lighthall Place
Roswell, NM 88203

Robert Matthew Boyd, as his separate property
27 Crows Nest Lane, Unit 16C
Danbury, CT 06810

Roberto T. Madrid and wife, Rosaline Madrid
2390 Barclay Ct.
Las Cruces, NM 88001

Rodolfo M. Rodriguez
4203 E. Derrick Rd.
Carlsbad, NM 88220

Rolla R. Hinkle III and wife, Rosemary Hinkle
P.O. Box 2292
Roswell, NM 88202

Ross Duncan Properties
PO Box 647
Artesia, NM 88211

Sally Guitar, as her sole and separate property
10 Woodhaven Circle
Abilene, TX 79605

Samuel Everett Boyd, as his separate property
1668 Salt Cedar Dr.
Ft. Sumner, Texas 88119

Santa Elena Minerals, LP
P.O. Box 2063
Midland, TX 79702

Saprena Armendariz Valadez, separate property
7700 East County Road 62
Midland, TX 79762

Sharon Guitar Ellis, as her sole and separate property
P.O. Box 105
Snoqualmie Pass, WA 98068

Shelbie Munoz, as her separate property
401 Elm
Loving, NM 88256

Southwest Petroleum Land Services, LLC
1901 W 4th St
Roswell, NM 88201

The State Highway Commission of New Mexico
PO Box 1149
Santa Fe, NM 87501

Thomas Lowry Hagerman, as his separate property
PO Box 4666
Santa Fe, NM 87502

Tower Rock Royalties LP
P.O. Box 5746
Austin, TX 78763

TROG Fund I, LP
P.O. Box 5746
Austin, TX 78764

Truchas Peaks, LLC
110 W. Louisiana Ave #500
Midland, TX 79701

V-F Petroleum, Inc.
500 W. Texas Avenue
Midland, TX 79701

Virginia Nevill Hoff Management Trust
2601 Lakewood Circle
Tuscaloosa, AL 35405

Wende Guitar Witherspoon a/k/a Wende
Witherspoon Morgan, as her sole and separate
property
1720 Southwicke Dr.
Flower Mound, TX 75022

Whitten Guitar Witherspoon, as his sole and
separate property
3824 Arroyo Rd.
Fort Worth, TX 76109

Woods Dickens Ranch, LP
36 Surrey Square
Abilene, TX 79606

Xplor Resources, LLC
1104 N Shore
Carlsbad, NM 88220

Prospector, LLC
PO Box 429
Roswell, NM 88202

Rachel G. Martin, Robert G. Rodriguez, Ruben
G. Rodriguez, Rosemary G. Zapata, and Rodolfo
G. Rodriguez Jr., all surviving joint tenants of
Rodney G. Rodriguez, deceased
207 Polk Street
Whiteface, TX 79379

New Mexico State Land Office
RE: Surface commingling application
P.O. Box 1148
Santa Fe, NM 87504-1148

Legal Notice

To: Alliance Land and Minerals, LLC; Amy Edith Boyd, her heirs and devisees; Anne Boyd Newtown, her heirs and devisees; Anne Marie Hagerman Wall, her heirs and devisees; Aurelio Murrillo and wife, Olivia Murillo, their heirs and devisees; B&G Royalties; Barbara Lee Backman, Inc.; Belen Hernandez, her heirs and devisees; Bennie Rodriguez, Jr., his heirs and devisees; Big Three Energy Group, LLC; Boe Norton and wife, Jeana Norton, their heirs and devisees; Brandon Munoz, his heirs and devisees; Brett Guitar Witherspoon, his heirs and devisees; Brian C. Reid and Katherine A. Reid, husband and wife, their heirs and devisees; Caki Family Limited Partnership; Camarie Oil & Gas, LLC; Caren G. Lucas, her heirs and devisees; Caren Gall Lucas Exempt Trust; Carl D. McKinley and wife, Elizabeth C. McKinley, their heirs and devisees; Carla Losoya, her heirs and devisees; Charles Nathan Hagerman, his heirs and devisees; Chi Energy, Inc.; Claude Sapien, Jr., his heirs and devisees; CrownRock Minerals, LP; Curtis Dale Boyd, his heirs and devisees; Daniel Bryce Munoz, his heirs and devisees; DSD Energy Resources, LLC; Earl B. Guitar Jr. and Margaret Ann Guitar Revocable Trust; Eduardo A. Rodriguez, his heirs and devisees; Elidia Ballestores, her heirs and devisees; Elvira Sapien Martinez, her heirs and devisees; Estate of Claudio L. Sapien, his heirs and devisees; Estate of Ernest A. Rodriguez, his heirs and devisees; Estate of Irene Ruiz, his heirs and devisees; Estate of Isaac Espinoza, his heirs and devisees; Featherstone Development Corporation; First Financial Trust & Asset Management Company, N.A., Trustee of the Cynthia Rhodes Trust; Fort Worth Mineral Company, LLC; Free Ride, LLC; Gary Armendariz, his heirs and devisees; George Rodriguez, his heirs and devisees; Gerald Rodriguez, his heirs and devisees; Guadalupe Land & Minerals, LLC; Guitar Galusha, LP; Guitar Land & Cattle Company, LP; Guitar Land & Cattle, LP; Guy Pittman Witherspoon, III, his heirs and devisees; Ide Losoya, his heirs and devisees; Jack G. Woods, Jr., his heirs and devisees; Janice Rodriguez, her heirs and devisees; Jeri Alexander Magnum, Trustee of the Carol Gibson Trust; JMA Oil Properties, Ltd.; John E. Munoz, Sr. and wife, Maria J. Munoz, their heirs and devisees; John Guitar Witherspoon, Jr., his heirs and devisees; John Kelly Guitar, his heirs and devisees; John W. Qualls, his heirs and devisees; Josephine Armendarez, her heirs and devisees; JPH Holdings, LP; Juanita Navarrette, her heirs and devisees; Juanita Sapien, her heirs and devisees; Judy Guitar Uhey, her heirs and devisees; Judy Parker, her heirs and devisees; Kelly Woods Leach, her heirs and devisees; Laura Jane Boyd, her heirs and devisees; Laura Jean Hofer Trust; Lesli Rebecca Guitar Nichols, her heirs and devisees; Leslie David Guitar, his heirs and devisees; Lino A. Rodriguez, his heirs and devisees; Madison M. Hinkle and wife, Susan Hinkle, their heirs and devisees; Marathon Oil Permian, LLC; Marcelo Navarrette and wife, Erminia Navarrette, their heirs and devisees; Margaret McClure (f/k/a Margaret Roberson), C/O Lee Roberson, her heirs and devisees; Mario Munoz, Jr., his heirs and devisees; Mark Munoz, his heirs and devisees; Martin S. Calderon, his heirs and devisees; Mary Helen R. Ruiz, her heirs and devisees; Mary Munoz, her heirs and devisees; Matt Norton and wife, Lisa Norton, their heirs and devisees; Matthew Munoz, his heirs and devisees; Melanie Elias, as Joint Tenant of Melissa Elias, her heirs and devisees; Melissa Elias, as Joint Tenant of Melanie Elias, her heirs and devisees; Melissa

EXHIBIT

6

tabbies

McGee, her heirs and devisees; MRC Permian Company; Murchison-Guitar Family LP; Natividad Dominguez, her heirs and devisees; Oak Valley Mineral and Land, LP; Otilia R. Bonilla, her heirs and devisees; Panhandle Properties, LLC; Pedro M. Sapien, Sr., his heirs and devisees; Polk Land & Minerals, LP; Pressley Hudson Guitar, his heirs and devisees; Priscilla A. Armendariz Ridenour, her heirs and devisees; Priscilla Rodriguez, her heirs and devisees; Rachel G. Martin, Robert G. Rodriguez, Ruben G. Rodriguez, Rosemary G. Zapata, and Rodolfo G. Rodriguez Jr., all surviving joint tenants of Rodney G. Rodriguez, deceased, their heirs and devisees; Raul Arturo Gamboa and Valdrie Lara, their heirs and devisees; Raul Rodriguez, his heirs and devisees; Raul Rodriguez, Jr., his heirs and devisees; Raymond A. Rodriguez, his heirs and devisees; Richardson Mineral & Royalty, LLC; RKI Exploration & Production, LLC; Roadrunner Oil and Gas, LLC; Roberson Minerals, LLC; Robert Cooper Walton, his heirs and devisees; Robert Joe Rodriguez, Jr., his heirs and devisees; Robert Matthew Boyd, his heirs and devisees; Roberto T. Madrid and wife, Rosaline Madrid, their heirs and devisees; Rodolfo M. Rodriguez, his heirs and devisees; Rolla R. Hinkle III and wife, Rosemary Hinkle, their heirs and devisees; Ross Duncan Properties; Sally Guitar, her heirs and devisees; Samuel Everett Boyd, his heirs and devisees; Santa Elena Minerals, LP; Saprena Armendariz Valadez, her heirs and devisees; Sharon Guitar Ellis, her heirs and devisees; Shelbie Munoz, her heirs and devisees; Southwest Petroleum Land Services, LLC; The State Highway Commission of New Mexico; Thomas Lowry Hagerman, his heirs and devisees; Tower Rock Royalties LP; TROG Fund I, LP; Truchas Peaks, LLC; V-F Petroleum, Inc.; Virginia Nevill Hoff Management Trust; Wende Guitar Witherspoon a/k/a Wende Witherspoon Morgan, her heirs and devisees; Whitten Guitar Witherspoon, his heirs and devisees; Woods Dickens Ranch, LP; Xplor Resources, LLC; Prospector, LLC; New Mexico State Land Office.

Application of Matador Production Company for administrative approval for off-lease measurement and approval to surface commingle (lease commingle) oil and gas production pursuant to 19.15.23.9(A) from the Purple Sage; Wolfcamp Gas Pool (98220) *from all existing and future wells and existing and future leases* drilled in the following areas of diverse ownership in S/2 of Section 36, Township 22 South, Range 27 East, the W/2 of Section 1, and the E/2 of Section 1, Township 23 South, Range 27 East, NMPM, Eddy County, New Mexico: the 320-acre spacing unit comprised of the S/2 of Section 36, Township 22 South, Range 27 East; the 320-acre spacing unit comprised of the W/2 of Section 1, Township 23 South, Range 27 East; and the 320-acre spacing unit comprised of the E/2 of Section 1, Township 23 South, Range 27 East.

Pursuant to NMAC 19.15.12.7, approved spacing units with diverse ownership are considered separate leases for surface commingling purposes. Matador seeks authority to surface commingle production according to the provisions of NMAC 19.15.12.10.C *from all existing and future wells* in these separate areas of diverse ownership at a surface facility located in the SW/4SW/4 (Unit M) of Section 36. Pursuant to 19.15.12.10(C)(4)(g), Matador also seeks authority to commingle production into the

Longwood RB pipeline from future leases with notice provided only to interest owners within future leases.

Any objection to this application must be filed in writing within twenty days from date of publication with the applicant and the New Mexico Oil Conservation Division, 1220 South St. Francis Drive, Santa Fe, New Mexico, 87505. If no objection is received within this twenty-day period, this application may be approved administratively by the Division. If you have any questions about this application, please contact Brian Fancher, Matador Production Company, 5400 LBJ Freeway, Suite 1500, Dallas, TX 75240, (972) 371-5242, BFancher @matadorresources.com.

Production Summary Report
API: 30-015-43162
SCOTT WALKER STATE 36 22S 27E RB #204H
Printed On: Monday, September 17 2018

Year	Pool	Month	Production				Injection				
			Oil(BBLS)	Gas(MCF)	Water(BBLS)	Days P/I	Water(BBLS)	Co2(MCF)	Gas(MCF)	Other	Pressure
2015	[98125] WC-015 G-06 S232704H;UPPER WOLFCAMP	Sep	4341	11946	56345	25	0	0	0	0	0
2015	[98125] WC-015 G-06 S232704H;UPPER WOLFCAMP	Oct	10291	22150	61330	30	0	0	0	0	0
2015	[98125] WC-015 G-06 S232704H;UPPER WOLFCAMP	Nov	5063	10251	25107	18	0	0	0	0	0
2015	[98125] WC-015 G-06 S232704H;UPPER WOLFCAMP	Dec	5318	10807	34173	25	0	0	0	0	0
2016	[98125] WC-015 G-06 S232704H;UPPER WOLFCAMP	Jan	5071	7897	33307	25	0	0	0	0	0
2016	[98125] WC-015 G-06 S232704H;UPPER WOLFCAMP	Feb	4081	8934	30602	29	0	0	0	0	0
2016	[98125] WC-015 G-06 S232704H;UPPER WOLFCAMP	Mar	3587	10920	30933	29	0	0	0	0	0
2016	[98125] WC-015 G-06 S232704H;UPPER WOLFCAMP	Apr	3057	10194	26758	30	0	0	0	0	0
2016	[98125] WC-015 G-06 S232704H;UPPER WOLFCAMP	May	2806	10482	24360	31	0	0	0	0	0
2016	[98125] WC-015 G-06 S232704H;UPPER WOLFCAMP	Jun	2438	9863	21540	30	0	0	0	0	0
2016	[98125] WC-015 G-06 S232704H;UPPER WOLFCAMP	Jul	2324	9698	21030	31	0	0	0	0	0
2016	[98125] WC-015 G-06 S232704H;UPPER WOLFCAMP	Aug	2121	7751	20043	31	0	0	0	0	0
2016	[98125] WC-015 G-06 S232704H;UPPER WOLFCAMP	Sep	1980	8000	17778	30	0	0	0	0	0
2016	[98125] WC-015 G-06 S232704H;UPPER WOLFCAMP	Oct	1908	6210	17323	31	0	0	0	0	0
2016	[98125] WC-015 G-06 S232704H;UPPER WOLFCAMP	Nov	1773	8906	15520	30	0	0	0	0	0
2016	[98125] WC-015 G-06 S232704H;UPPER WOLFCAMP	Dec	1743	10167	15538	31	0	0	0	0	0
2017	[98125] WC-015 G-06 S232704H;UPPER WOLFCAMP	Jan	1743	10167	15538	31	0	0	0	0	0
2017	[98220] PURPLE SAGE;WOLFCAMP (GAS)	Feb	1411	3628	13740	28	0	0	0	0	0
2017	[98220] PURPLE SAGE;WOLFCAMP (GAS)	Mar	1560	4033	15058	31	0	0	0	0	0
2017	[98220] PURPLE SAGE;WOLFCAMP (GAS)	Apr	1447	3133	14098	30	0	0	0	0	0
2017	[98220] PURPLE SAGE;WOLFCAMP (GAS)	May	1452	1215	14257	31	0	0	0	0	0
2017	[98220] PURPLE SAGE;WOLFCAMP (GAS)	Jun	1354	2239	13942	30	0	0	0	0	0
2017	[98220] PURPLE SAGE;WOLFCAMP (GAS)	Jul	1348	2932	14035	31	0	0	0	0	0
2017	[98220] PURPLE SAGE;WOLFCAMP (GAS)	Aug	1296	3040	12841	31	0	0	0	0	0
2017	[98220] PURPLE SAGE;WOLFCAMP (GAS)	Sep	1178	2506	11916	30	0	0	0	0	0
2017	[98220] PURPLE SAGE;WOLFCAMP (GAS)	Oct	1215	3382	12386	31	0	0	0	0	0
2017	[98220] PURPLE SAGE;WOLFCAMP (GAS)	Nov	1179	4364	11440	30	0	0	0	0	0
2017	[98220] PURPLE SAGE;WOLFCAMP (GAS)	Dec	1082	4354	11305	31	0	0	0	0	0
2018	[98220] PURPLE SAGE;WOLFCAMP (GAS)	Jan	1032	1087	8823	27	0	0	0	0	0
2018	[98220] PURPLE SAGE;WOLFCAMP (GAS)	Feb	928	738	7643	28	0	0	0	0	0
2018	[98220] PURPLE SAGE;WOLFCAMP (GAS)	Mar	1214	2066	11170	31	0	0	0	0	0
2018	[98220] PURPLE SAGE;WOLFCAMP (GAS)	Apr	968	5380	9313	30	0	0	0	0	0
2018	[98220] PURPLE SAGE;WOLFCAMP (GAS)	May	1122	3161	10079	30	0	0	0	0	0
2018	[98220] PURPLE SAGE;WOLFCAMP (GAS)	Jun	660	2685	4543	30	0	0	0	0	0
2018	[98220] PURPLE SAGE;WOLFCAMP (GAS)	Jul	973	5326	8740	31	0	0	0	0	0