

RECEIVED: 3/15/2019	REVIEWER: MAAM	TYPE: CTB	APP NO: PMAM 19074 52240
-------------------------------	--------------------------	---------------------	------------------------------------

ABOVE THIS TABLE FOR OCD DIVISION USE ONLY

NEW MEXICO OIL CONSERVATION DIVISION
 - Geological & Engineering Bureau -
 1220 South St. Francis Drive, Santa Fe, NM 87505

**ADMINISTRATIVE APPLICATION CHECKLIST**

THIS CHECKLIST IS MANDATORY FOR ALL ADMINISTRATIVE APPLICATIONS FOR EXCEPTIONS TO DIVISION RULES AND
 REGULATIONS WHICH REQUIRE PROCESSING AT THE DIVISION LEVEL IN SANTA FE

Applicant: Matador Production Company **OGRID Number:** 228937
Well Name: Airstrip 31-18S-35E RN State Com No. 114H 124H & 134H **API:** 30-025-45436, 30-025-45437, 30-025-45438
Pool: Airstrip; Bone Spring Pool **Pool Code:** 960

**SUBMIT ACCURATE AND COMPLETE INFORMATION REQUIRED TO PROCESS THE TYPE OF APPLICATION
 INDICATED BELOW**

- 1) **TYPE OF APPLICATION:** Check those which apply for [A]
 A. Location - Spacing Unit - Simultaneous Dedication
☐ NSL ☐ NSP (PROJECT AREA) ☐ NSP (PRORATION UNIT) ☐ SD

B. Check one only for [I] or [II]

[I] Commingling - Storage - Measurement

☐ DHC ☒ CTB ☒ PLC ☐ PC ☒ OLS ☒ OLM

[II] Injection - Disposal - Pressure Increase - Enhanced Oil Recovery

☐ WFX ☐ PMX ☐ SWD ☐ IPI ☐ EOR ☐ PPR

- 2) **NOTIFICATION REQUIRED TO:** Check those which apply.

- A. ☐ Offset operators or lease holders
 B. ☒ Royalty, overriding royalty owners, revenue owners
 C. ☐ Application requires published notice
 D. ☒ Notification and/or concurrent approval by SLO
 E. ☐ Notification and/or concurrent approval by BLM
 F. ☐ Surface owner
 G. ☐ For all of the above, proof of notification or publication is attached, and/or,
 H. ☐ No notice required

FOR OCD ONLY

- ☐ Notice Complete
☐ Application Content Complete

- 3) **CERTIFICATION:** I hereby certify that the information submitted with this application for administrative approval is **accurate** and **complete** to the best of my knowledge. I also understand that **no action** will be taken on this application until the required information and notifications are submitted to the Division.

Note: Statement must be completed by an individual with managerial and/or supervisory capacity.

Adam G. Rankin

Print or Type Name

March 15, 2019

Date

505-988-4421

Phone Number

agrarkin@hollandhart.com

e-mail Address

Signature

Scanned



March 15, 2019

VIA HAND DELIVERY

Gabriel Wade
Acting Director
Oil Conservation Division
New Mexico Department of Energy,
Minerals and Natural Resources
1220 South Saint Francis Drive
Santa Fe, New Mexico 87505

Re: Amended Application of Matador Production Company for administrative approval for off-lease storage and measurement and approval to surface commingle (lease commingle) production from the spacing units comprising Section 31, Township 18 South, Range 35 East, NMPM, Lea County, New Mexico.

Dear Mr. Wade:

By Administrative Order CTB-851 dated April 12, 2018, Matador Production Company (OGRID No. 228937) was authorized to surface commingle oil and gas production from the Airstrip; Bone Spring Pool (960) from certain wells located in Section 31, Township 18 South, Range 35 East, NMPM, Lea County, New Mexico.

Matador now seeks administrative approval for an amendment to the April 12, 2018 order for off-lease measurement and approval to surface lease commingle production from the Airstrip; Bone Spring Pool (960) *from all existing and future wells and existing and future leases* drilled within the following spacing and proration units in Section 31, Township 18 South, Range 35 East, NMPM, Lea County, New Mexico:

(a) The 154.28-acre spacing and proration unit comprised of Lots 1-4 (W/2 W/2) of Section 31. The spacing unit is currently dedicated to the Airstrip 31-18S-35E RN State Com No. 111H (API No. 30-025-45025) and the Airstrip 31-18S-35E RN State Com No. 131H (API No. 30-025-45509) wells.

(b) The 160.75-acre spacing and proration unit comprised of the E/2 W/2 of Section 31. The spacing unit is currently dedicated to the Airstrip 31-18S-35E RN State Com No. 132H well (API No. 30-025-43816).

(c) The 160.53-acre spacing and proration unit comprised of the W/2 E/2 of Section 31. The spacing unit is currently dedicated to the Airstrip 31-18S-35E RN State Com No. 133H well (API No. 30-025-44323).



(d) The 160-acre spacing and proration unit comprised of the E/2 E/2 of Section 31. The spacing unit will be dedicated to the Airstrip 31-18S-35E RN State Com No. 114H (API No. 30-025-45436), the Airstrip 31-18S-35E RN State Com No. 124H (API No. 30-025-45437), and the Airstrip 31-18S-35E RN State Com No. 134H (API No. 30-025-45438) wells.

Pursuant to NMAC 19.15.12.7, approved spacing units with diverse ownership are considered separate leases for surface commingling purposes. Matador seeks authority to surface commingle production according to the provisions of NMAC 19.15.12.10.C *from all existing and future wells* in these separate areas of diverse ownership at a surface facility located in the SW/4 SW (Unit M) of Section 31. Prior to commingling, gas production from each well will be separately metered using individual test separators with calibrated orifice meters that are manufactured to AGA specifications. Oil production from each well will also be separately metered using a turbine meter.

Exhibit 1 is a land plat showing Matador's current development and gathering system in the subject area. The plat identifies the wellbores, the existing spacing and proration units, and the common surface facilities located in the SW/4 SW/4 (Unit M) of Section 31.

Exhibit 2 is a completed Application for Surface Commingling (Diverse Ownership) and Off-Lease Measurement Form C-107-B with a statement from Benjamin D. Peterson, P.E., identifying the facilities and the measurement devices to be utilized, a detailed schematic of the surface facilities (Exhibit A to the statement) and a referenced gas sample (Exhibit B to the statement).

Exhibit 3 is a C-102 for each of the wells currently permitted or drilled within the existing spacing units with six-month production reports for these wells, if available.

Exhibit 4 is a diagram of the surface facilities.

Exhibit 5 is a list of the interest owners affected by this request for approval to off-lease measure and surface commingle production. A copy of this application with all attachments has been sent by certified mail to all affected parties advising them that if they have an objection they must file it in writing with the division within 20 days from the date the Division receives Matador's application.

Thank you for your attention to this matter and please feel free to call if you have any questions and require additional information.

Sincerely,

Michael H. Feldewert

ATTORNEY FOR MATADOR PRODUCTION COMPANY

cc: New Mexico State Land Office
P.O. Box 1148
Santa Fe, NM 87504-1148

HOLLAND & HART^{LLP}



Michael H. Feldewert
Recognized Specialist in the Area of
Natural Resources - Oil and Gas Law -
New Mexico Board of Legal Specialization
mfeldewert@hollandhart.com

March 15, 2019

CERTIFIED MAIL
RETURN RECEIPT REQUESTED

TO: ALL AFFECTED PARTIES

Re: Amended Application of Matador Production Company for administrative approval for off-lease storage and measurement and approval to surface commingle (lease commingle) production from the spacing units comprising Section 31, Township 18 South, Range 35 East, NMPM, Lea County, New Mexico.

Ladies and Gentlemen:

Enclosed is a copy of the above-referenced amended application, which was filed with the New Mexico Oil Conservation Division on this date. Any objection to this application must be filed in writing within twenty days from this date at the Division's Santa Fe office located at 1220 South St. Francis Drive, Santa Fe, New Mexico, 87505. If no objection is received within this twenty-day period, this application may be approved administratively by the Division.

If you have any questions about this application, please contact the following:

Kyle Perkins
Matador Production Company
972-371-5202
kperkins@matadorresources.com

Sincerely,

Michael H. Feldewert
ATTORNEY FOR
MATADOR PRODUCTION COMPANY

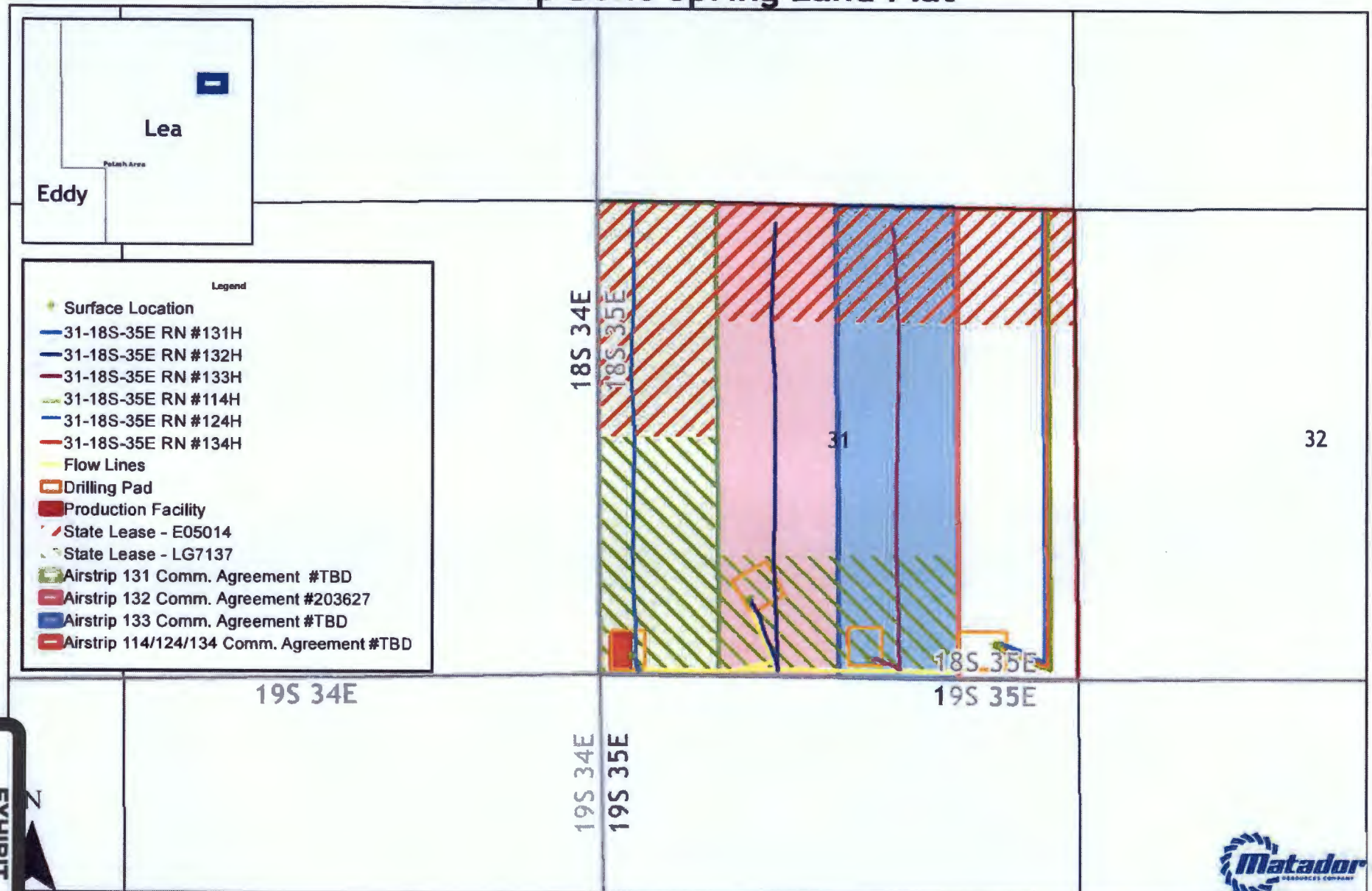
Holland & Hart^{LLP}

Phone [505] 988-4421 Fax [505] 983-6043 www.hollandhart.com

110 North Guadalupe Suite 1 Santa Fe, New Mexico 87501 Mailing Address P.O. Box 2208 Santa Fe, NM 87504-2208

Aspen Boulder Carson City Colorado Springs Denver Denver Tech Center Billings Boise Cheyenne Jackson Hole Las Vegas Reno Salt Lake City Santa Fe Washington, D.C. ☪

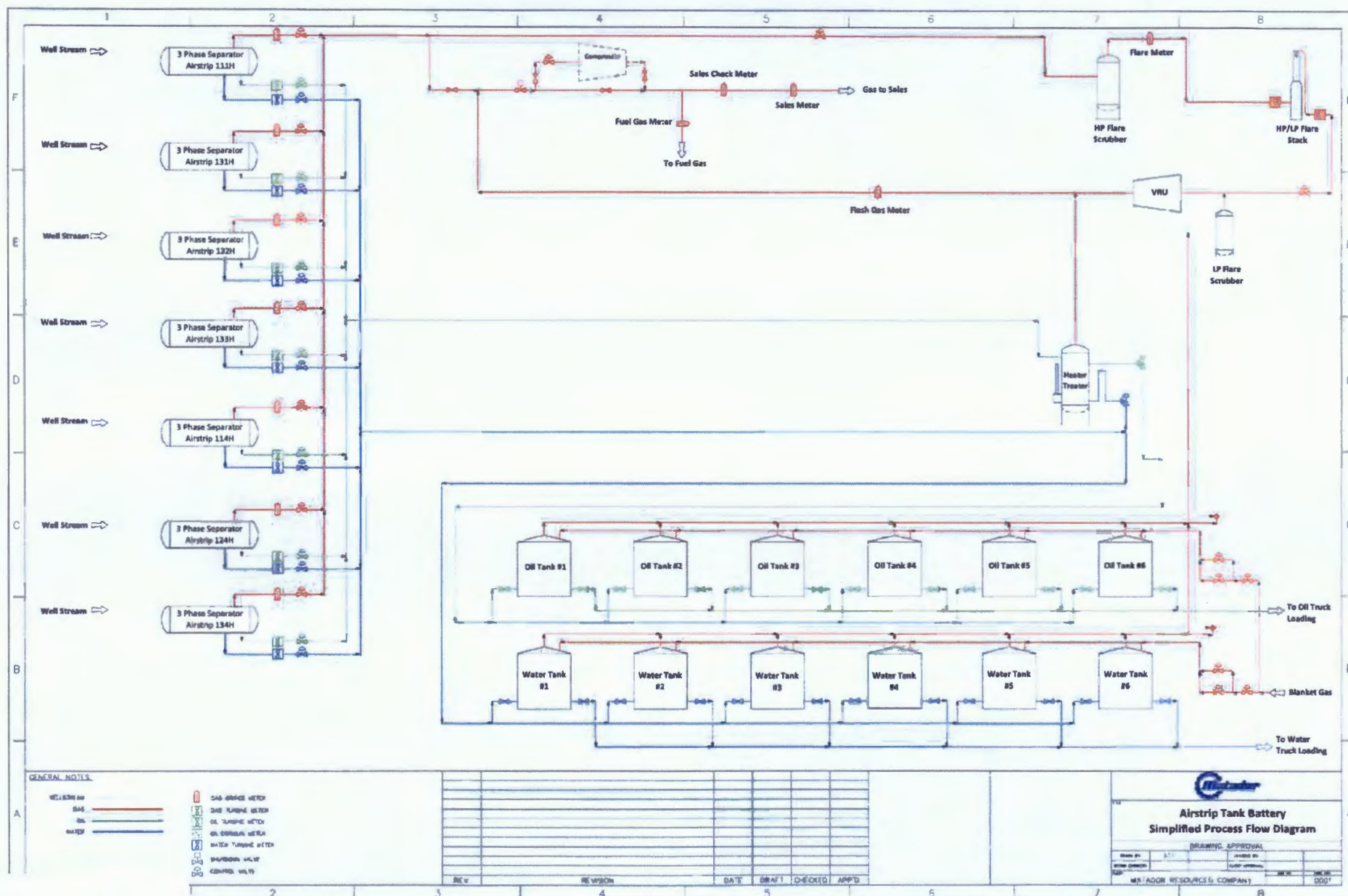
Airstrip Bone Spring Land Plat



Southeast New Mexico

0 750 1,500 3,000 Feet

Date: March 5, 2019
Filename: ComminglingLandPlat_Airstrip
Projection: NAD27 State Plane New Mexico East FIPS 3001
Sources: IHS; ESRI;



September 19, 2017

FESCO, Ltd.
1100 Fesco Ave. - Alice, Texas 78332

For: Matador Production Company
One Lincoln Centre
5400 LBJ Freeway, Suite 1500
Dallas, Texas 75240

Sample: Airstrip 31 18 35 RN State Com No. 132H
First Stage Separator
Spot Gas Sample @ 119 psig & 108 °F

Date Sampled: 09/15/2017

Job Number: 73293.001

CHROMATOGRAPH EXTENDED ANALYSIS - GPA 2286

COMPONENT	MOL%	GPM
Hydrogen Sulfide*	< 0.001	
Nitrogen	4.833	
Carbon Dioxide	0.221	
Methane	60.792	
Ethane	17.189	4.594
Propane	10.871	2.993
Isobutane	1.006	0.329
n-Butane	2.878	0.907
2-2 Dimethylpropane	0.010	0.004
Isopentane	0.560	0.205
n-Pentane	0.569	0.206
Hexanes	0.422	0.174
Heptanes Plus	<u>0.649</u>	<u>0.252</u>
Totals	100.000	9.664

Computed Real Characteristics Of Heptanes Plus:

Specific Gravity -----	3.262	(Air=1)
Molecular Weight -----	93.99	
Gross Heating Value -----	4831	BTU/CF

Computed Real Characteristics Of Total Sample:

Specific Gravity -----	0.875	(Air=1)
Compressibility (Z) -----	0.9949	
Molecular Weight -----	25.21	
Gross Heating Value		
Dry Basis -----	1418	BTU/CF
Saturated Basis -----	1394	BTU/CF

*Hydrogen Sulfide tested on location b; Stain Tube Method (GPA 2377)
Results: <0.013 Gr/100 CF, <0.2 PPMV or <0.001 Mol %

Base Conditions: 14.650 PSI & 60 Deg F

Sampled By: (08) B.McCollum
Analyst: MR
Processor: NG
Cylinder ID: T-1773

Certified: FESCO, Ltd. - Alice, Texas

David Dannhaus 361-661-7015

CHROMATOGRAPH EXTENDED ANALYSIS - GPA 2286
TOTAL REPORT

COMPONENT	MOL %	GPM	WT %
Hydrogen Sulfide*	< 0.001		< 0.001
Nitrogen	4.833		5.371
Carbon Dioxide	0.221		0.386
Methane	60.792		38.691
Ethane	17.189	4.594	20.505
Propane	10.871	2.993	19.018
Isobutane	1.006	0.329	2.320
n-Butane	2.878	0.907	6.636
2,2 Dimethylpropane	0.010	0.004	0.029
Isopentane	0.560	0.205	1.603
n-Pentane	0.569	0.206	1.629
2,2 Dimethylbutane	0.003	0.001	0.010
Cyclopentane	0.080	0.033	0.223
2,3 Dimethylbutane	0.000	0.000	0.000
2 Methylpentane	0.125	0.052	0.427
3 Methylpentane	0.078	0.032	0.267
n-Hexane	0.136	0.056	0.465
Methylcyclopentane	0.118	0.041	0.394
Benzene	0.082	0.023	0.254
Cyclohexane	0.084	0.029	0.280
2-Methylhexane	0.017	0.008	0.068
3-Methylhexane	0.023	0.010	0.091
2,2,4 Trimethylpentane	0.000	0.000	0.000
Other C7's	0.085	0.037	0.335
n-Heptane	0.039	0.018	0.155
Methylcyclohexane	0.064	0.026	0.249
Toluene	0.032	0.011	0.117
Other C8's	0.058	0.027	0.254
n-Octane	0.014	0.007	0.063
Ethylbenzene	0.004	0.002	0.017
M & P Xylenes	0.004	0.002	0.017
O-Xylene	0.002	0.001	0.008
Other C9's	0.017	0.009	0.085
n-Nonane	0.003	0.002	0.015
Other C10's	0.001	0.001	0.006
n-Decane	0.001	0.001	0.006
Undecanes (11)	<u>0.001</u>	<u>0.001</u>	<u>0.006</u>
Totals	100.000	9.664	100.000

Computed Real Characteristics of Total Sample

Specific Gravity -----	0.875	(Air=1)
Compressibility (Z) -----	0.9949	
Molecular Weight -----	25.21	
Gross Heating Value		
Dry Basis -----	1418	BTU/CF
Saturated Basis -----	1394	BTU/CF

FESCO, Ltd.**1100 Fesco Ave. - Alice, Texas 78332****Sample:** Airstrip 31 18 35 RN State Com No. 132H

First Stage Separator

Spot Gas Sample @ 119 psig & 108 °F

Date Sampled: 09/15/2017

Job Number: 73293.001

GLYCALC FORMAT

COMPONENT	MOL%	GPM	Wt %
Carbon Dioxide	0.221		0.386
Hydrogen Sulfide	< 0.001		< 0.001
Nitrogen	4.833		5.371
Methane	60.792		38.691
Ethane	17.189	4.594	20.505
Propane	10.871	2.993	19.018
Isobutane	1.006	0.329	2.320
n-Butane	2.888	0.911	6.665
Isopentane	0.560	0.205	1.603
n-Pentane	0.569	0.206	1.629
Cyclopentane	0.080	0.033	0.223
n-Hexane	0.136	0.056	0.465
Cyclohexane	0.084	0.029	0.280
Other C6's	0.206	0.085	0.704
Heptanes	0.282	0.114	1.043
Methylcyclohexane	0.064	0.026	0.249
2,2,4 Trimethylpentane	0.000	0.000	0.000
Benzene	0.082	0.023	0.254
Toluene	0.032	0.011	0.117
Ethylbenzene	0.004	0.002	0.017
Xylenes	0.006	0.002	0.025
Octanes Plus	<u>0.095</u>	<u>0.046</u>	<u>0.435</u>
Totals	100.000	9.664	100.000

Real Characteristics Of Octanes Plus:

Specific Gravity ----- 4.001 (Air=1)
Molecular Weight ----- 115.30
Gross Heating Value ----- 5885 BTU/CF

Real Characteristics Of Total Sample:

Specific Gravity ----- 0.875 (Air=1)
Compressibility (Z) ----- 0.9949
Molecular Weight ----- 25.21
Gross Heating Value
Dry Basis ----- 1418 BTU/CF
Saturated Basis ----- 1394 BTU/CF

District I
1625 N. French Dr., Hobbs, NM 88240
Phone: (575) 393-6161 Fax: (575) 393-0720
District II
811 S. First St., Artesia, NM 88210
Phone: (575) 748-1283 Fax: (575) 748-9720
District III
1000 Rio Brazos Road, Aztec, NM 87410
Phone: (505) 334-6178 Fax: (505) 334-6170
District IV
1220 S. St. Francis Dr., Santa Fe, NM 87505
Phone: (505) 476-3460 Fax: (505) 476-3462

State of New Mexico
Energy, Minerals & Natural Resources
Department
OIL CONSERVATION DIVISION
1220 South St. Francis Dr.
Santa Fe, NM 87505

NOV 06 2018
RECEIVED
HOBBS OCD

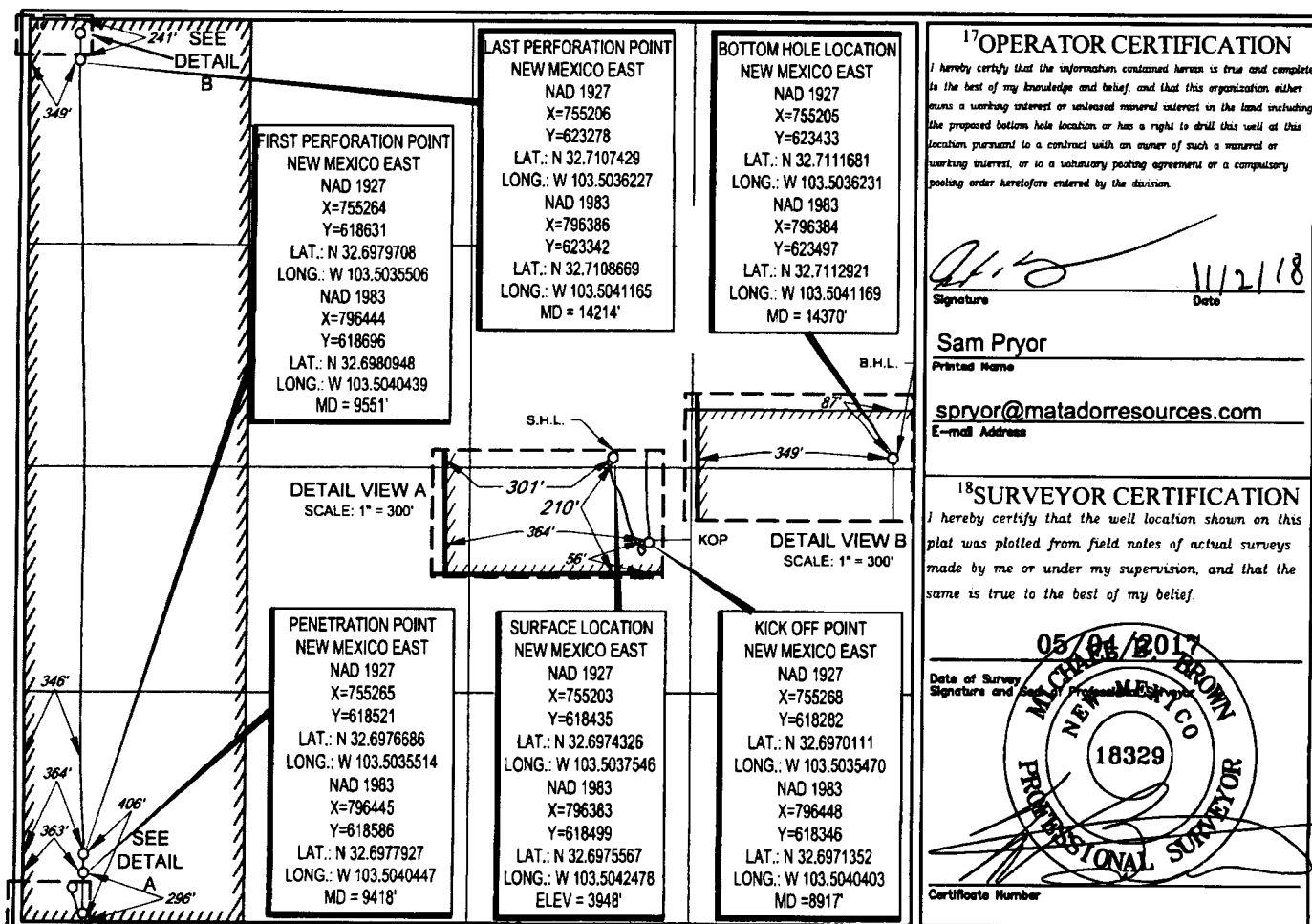
FORM C-102
Revised August 1, 2011
Submit one copy to appropriate
District Office

☐ AMENDED REPORT

WELL LOCATION AND ACREAGE DEDICATION PLAT

1 API Number 30-025-45025		2 Pool Code 960		3 Pool Name AIRSTRIP;BONE SPRING	
4 Property Code 314818		5 Property Name AIRSTRIP 31-18S-35E RN STATE COM			6 Well Number #111H
7 OGRID No. 228937		8 Operator Name MATADOR PRODUCTION COMPANY			9 Elevation 3948'
10 Surface Location					
UL or lot no. M	Section 31	Township 18-S	Range 35-E	Lot Idn -	Feet from the 210'
					North/South line SOUTH
					Feet from the 301'
					East/West line WEST
					County LEA
UL or lot no. D	Section 31	Township 18-S	Range 35-E	Lot Idn -	Feet from the 87'
					North/South line NORTH
					Feet from the 349'
					East/West line WEST
					County LEA
11 Dedicated Acres 154.28		12 Joint or Infill		13 Consolidation Code	
				14 Order No. 2-1472	

No allowable will be assigned to this completion until all interests have been consolidated or a non-standard unit has been approved by the division.



Surveys 11/5

District I
1625 N. French Dr., Hobbs, NM 88240
Phone: (575) 393-6161 Fax: (575) 393-6162
District II
811 S. First St., Artesia, NM 88210
Phone: (575) 748-1283 Fax: (575) 748-9720
District III
1000 Rio Brazos Road, Aztec, NM 87410
Phone: (505) 334-6178 Fax: (505) 334-6170
District IV
1220 S. St. Francis Dr., Santa Fe, NM 87505
Phone: (505) 476-3460 Fax: (505) 476-3461

HOBBS OCD

FEB 06 2019

RECEIVED

State of New Mexico
Energy, Minerals & Natural Resources
Department
OIL CONSERVATION DIVISION
1220 South St. Francis Dr.
Santa Fe, NM 87505

FORM C-102
Revised August 1, 2011
Submit one copy to appropriate
District Office
☐ AMENDED REPORT

WELL LOCATION AND ACREAGE DEDICATION PLAT

API Number 30-025-44509		Pool Code 960	Pool Name AIRSTRIP;BONE SPRING
Property Code 314818	Property Name AIRSTRIP 31-18S-35E RN STATE COM		Well Number #131H
GRID No. 228937	Operator Name MATADOR PRODUCTION COMPANY		Elevation 3948'

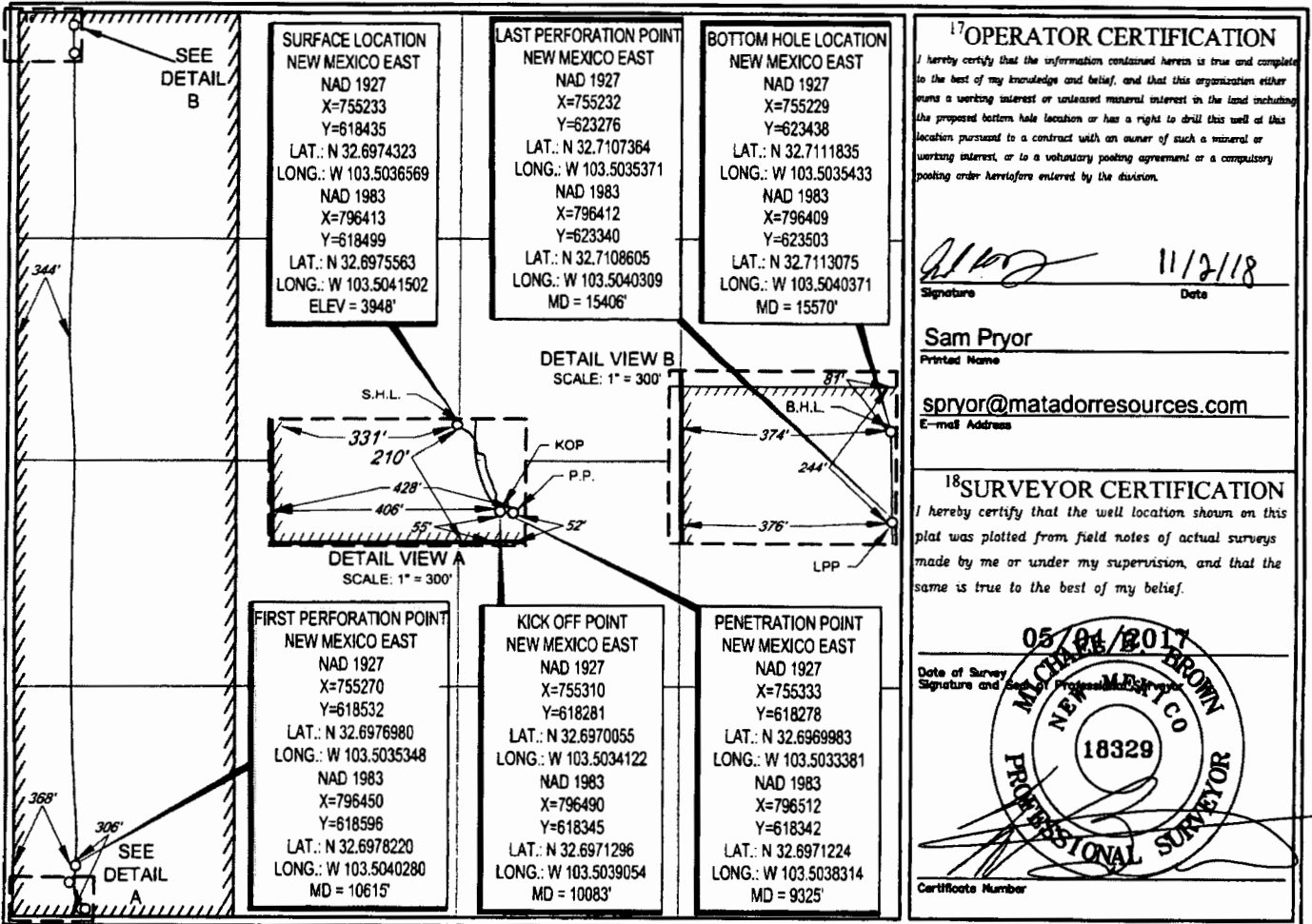
10 Surface Location

UL or lot no.	Section	Township	Range	Lot Idn	Feet from the	North/South line	Feet from the	East/West line	County
M	31	18-S	35-E	-	210'	SOUTH	331'	WEST	LEA

UL or lot no.	Section	Township	Range	Lot Idn	Feet from the	North/South line	Feet from the	East/West line	County
D	31	18-S	35-E	-	81'	NORTH	374'	WEST	LEA

Dedicated Acres 154.28	Joint or Infill	Consolidation Code	Order No.
---------------------------	-----------------	--------------------	-----------

No allowable will be assigned to this completion until all interests have been consolidated or a non-standard unit has been approved by the division.



District I
1625 N. French Dr., Hobbs, NM 88240
Phone: (575) 393-6161 Fax: (575) 393-0720
District II
811 S. First St., Artesia, NM 88210
Phone: (575) 748-1283 Fax: (575) 748-9720
District III
1000 Rio Brazos Road, Aztec, NM 87410
Phone: (505) 334-6178 Fax: (505) 334-6170
District IV
1220 S. St. Francis Dr., Santa Fe, NM 87505
Phone: (505) 476-3460 Fax: (505) 476-3462

State of New Mexico
Energy, Minerals & Natural Resources
Department
OIL CONSERVATION DIVISION
1220 South St. Francis Dr.
Santa Fe, NM 87505

FORM C-102
Revised August 1, 2011
Submit one copy to appropriate
District Office
☐ AMENDED REPORT

HOBBS OCD
SEP 11 2017
RECEIVED

WELL LOCATION AND ACREAGE DEDICATION PLAT

¹ API Number 30-025-43816	² Pool Code 960	³ Pool Name AIRSTRIP; BONE SPRING
⁴ Property Code 314818	⁵ Property Name AIRSTRIP 31-18S-35E RN STATE COM	⁶ Well Number #132H
⁷ GRID No. 22897	⁸ Operator Name MATADOR PRODUCTION COMPANY	⁹ Elevation 3937'

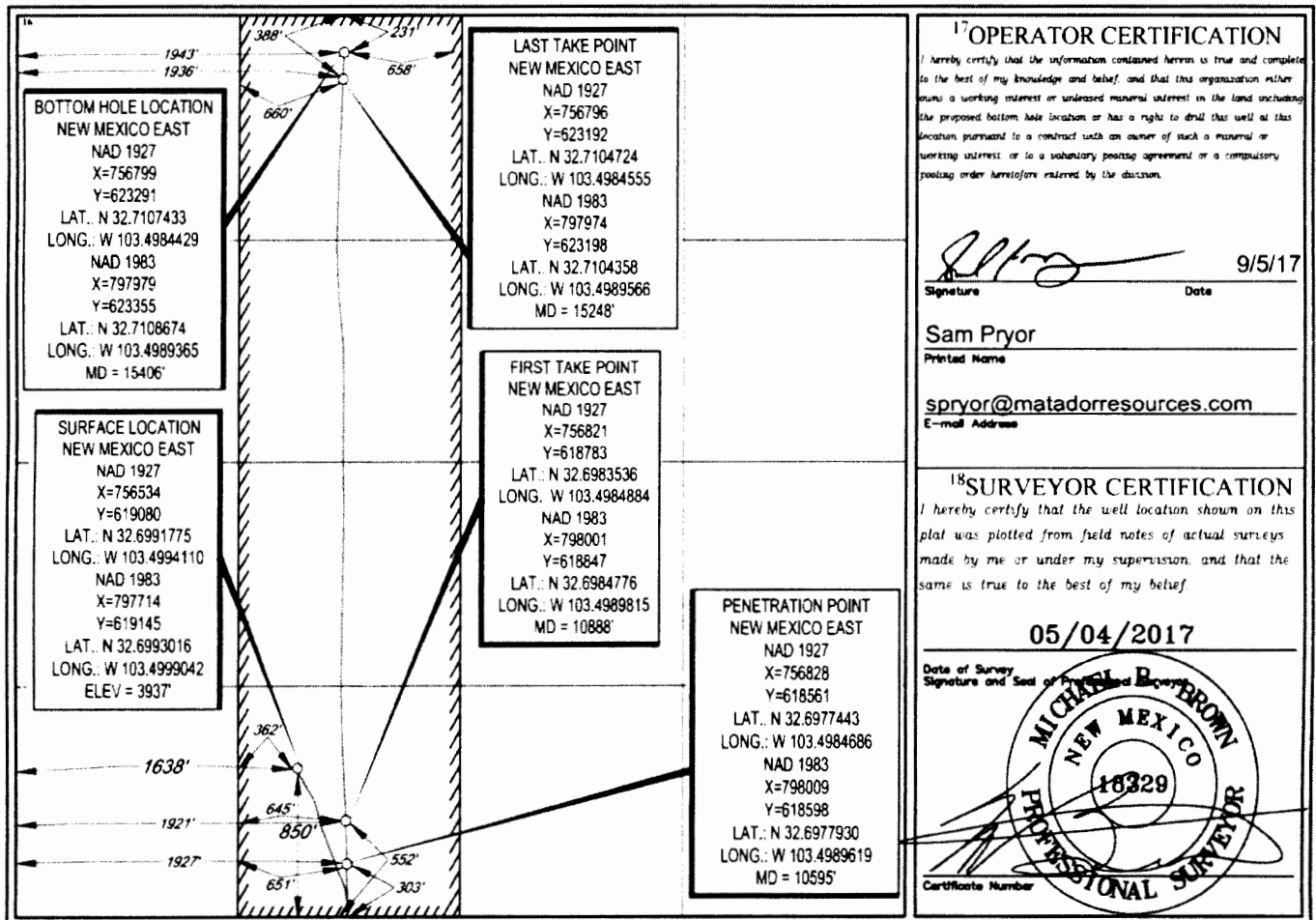
¹⁰Surface Location

U/L or lot no.	Section	Township	Range	Lot Idn	Feet from the	North/South line	Feet from the	East/West line	County
N	31	18-S	35-E	-	850'	SOUTH	1638'	WEST	LEA

U/L or lot no.	Section	Township	Range	Lot Idn	Feet from the	North/South line	Feet from the	East/West line	County
C	31	18-S	35-E	-	231'	NORTH	1943'	WEST	LEA

¹¹ Dedicated Acres 160.75	¹² Joint or Infill	¹³ Consolidation Code	¹⁴ Order No. R-14378
---	-------------------------------	----------------------------------	------------------------------------

No allowable will be assigned to this completion until all interests have been consolidated or a non-standard unit has been approved by the division.



S:\SURVEY\MATADOR_RESOURCES\AIRSTRIP_31-18S-35E_RN_STATE_COM_132H\FINAL_PRODUCT\SIAD_AIRSTRIP_31-18S-35E_RN_STATE_COM_132H.DWG 8/31/2017 5:02:22 PM jpryor

District I
1625 N. French Dr., Hobbs, NM 88240
Phone: (575) 393-6161 Fax: (575) 393-0720
District II
811 S. First St., Artesia, NM 88210
Phone: (575) 748-1283 Fax: (575) 748-9720
District III
1000 Rio Brazos Road, Aztec, NM 87410
Phone: (505) 334-6178 Fax: (505) 334-6170
District IV
1220 S. St. Francis Dr., Santa Fe, NM 87505
Phone: (505) 476-3460 Fax: (505) 476-3462

State of New Mexico
Energy, Minerals & Natural Resources
Department
OIL CONSERVATION DIVISION
1220 South St. Francis Dr.
Santa Fe, NM 87505

HOBBS OCD
MAR 23 2018
RECEIVED

FORM C-102
Revised August 1, 2011
Submit one copy to appropriate
District Office

☐ AMENDED REPORT

WELL LOCATION AND ACREAGE DEDICATION PLAT

¹ API Number 30-025-44323	² Pool Code 960	³ Pool Name AIRSTRIP; BONE SPRING
⁴ Property Code 314818	⁵ Property Name AIRSTRIP 31-18S-35E RN STATE COM	⁶ Well Number #133H
⁷ OGRID No. 228937	⁸ Operator Name MATADOR PRODUCTION COMPANY	⁹ Elevation 3936'

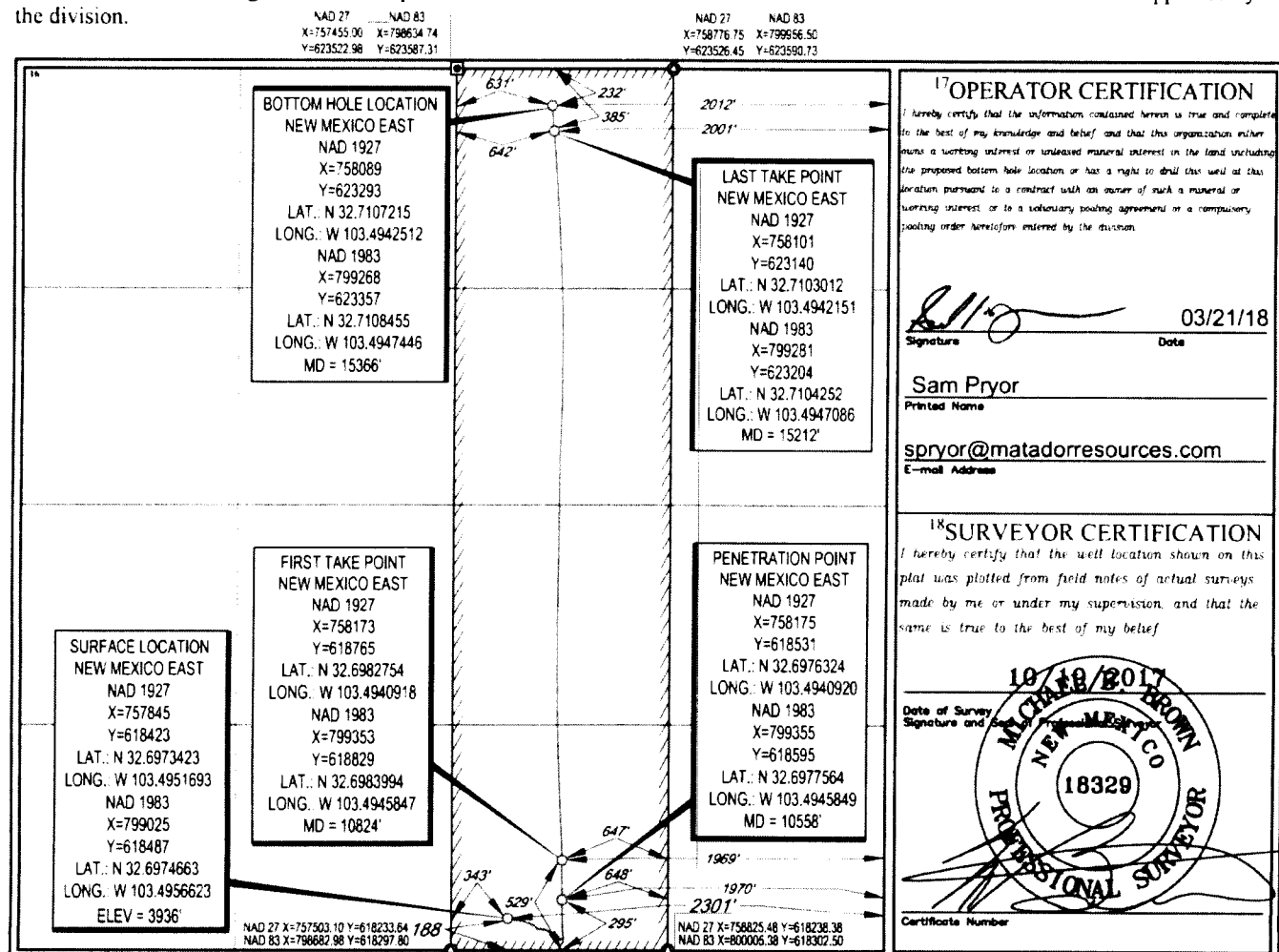
¹⁰Surface Location

U.I. or lot no.	Section	Township	Range	Lot Idn	Feet from the	North/South line	Feet from the	East/West line	County
0	31	18-S	35-E	-	188'	SOUTH	2301'	EAST	LEA

U.I. or lot no.	Section	Township	Range	Lot Idn	Feet from the	North/South line	Feet from the	East/West line	County
B	31	18-S	35-E	-	232'	NORTH	2012'	EAST	LEA

¹¹ Dedicated Acres 160.53	¹² Joint or Infill	¹³ Consolidation Code	¹⁴ Order No. R-1974
---	-------------------------------	----------------------------------	-----------------------------------

No allowable will be assigned to this completion until all interests have been consolidated or a non-standard unit has been approved by the division.



District I
1625 N. French Dr., Hobbs, NM 88240
Phone: (575) 393-6161 Fax: (575) 393-0720
District II
811 S. First St., Artesia, NM 88210
Phone: (575) 748-1283 Fax: (575) 748-9720
District III
1000 Rio Brazos Road, Aztec, NM 87410
Phone: (505) 334-6178 Fax: (505) 334-6170
District IV
1220 S. St. Francis Dr., Santa Fe, NM 87505
Phone: (505) 476-3460 Fax: (505) 476-3462

State of New Mexico
Energy, Minerals & Natural Resources
Department
OIL CONSERVATION DIVISION
1220 South St. Francis Dr.
Santa Fe, NM 87505

FORM C-102
Revised August 1, 2011
Submit one copy to appropriate
District Office

☐ AMENDED REPORT

WELL LOCATION AND ACREAGE DEDICATION PLAT

¹ API Number 30-025 45436	² Pool Code 960	³ Pool Name AIRSTRIP; BONE SPRING
⁴ Property Code 714818	⁵ Property Name AIRSTRIP 31-18S-35E RN STATE COM	⁶ Well Number #114H
⁷ OGRIID No. 228937	⁸ Operator Name MATADOR PRODUCTION COMPANY	⁹ Elevation 3931'

¹⁰Surface Location

UL or lot no.	Section	Township	Range	Lot Idn	Feet from the	North/South line	Feet from the	East/West line	County
P	31	18-S	35-E	-	306'	SOUTH	869'	EAST	LEA

¹¹Bottom Hole Location If Different From Surface

UL or lot no.	Section	Township	Range	Lot Idn	Feet from the	North/South line	Feet from the	East/West line	County
A	31	18-S	35-E	-	100'	NORTH	330'	EAST	LEA

¹² Dedicated Acres 160	¹³ Joint or Infill	¹⁴ Consolidation Code	¹⁵ Order No. C.A.S. # 20364; R-Pending
--------------------------------------	-------------------------------	----------------------------------	--

No allowable will be assigned to this completion until all interests have been consolidated or a non-standard unit has been approved by the division.

<p>¹⁶LAST PERFORATION/ BOTTOM HOLE LOCATION NEW MEXICO EAST NAD 1927 X=759769 Y=623429 LAT.: N 32.7110694 LONG.: W 103.4887850 NAD 1983 X=800949 Y=623493 LAT.: N 32.7111833 LONG.: W 103.4892783</p>	<p>SURFACE LOCATION NEW MEXICO EAST NAD 1927 X=759276 Y=618546 LAT.: N 32.6976484 LONG.: W 103.4905145 NAD 1983 X=800456 Y=618610 LAT.: N 32.6977723 LONG.: W 103.4910073</p>	<p>¹⁷OPERATOR CERTIFICATION I hereby certify that the information contained herein is true and complete to the best of my knowledge and belief, and that this authorization either owns a working interest or undivided mineral interest in the land including the proposed bottom hole location or has a right to drill this well at this location pursuant to a contract with an owner of such a mineral or working interest, or to a voluntary pooling agreement or a compulsory pooling order heretofore entered by the division.</p> <p>Signature: <i>[Signature]</i> Date: 12/17/18 Printed Name: Samuel Payer E-mail Address: SPayer@matador-resources.com</p>
<p>FIRST PERFORATION POINT NEW MEXICO EAST NAD 1927 X=759816 Y=618342 LAT.: N 32.6970765 LONG.: W 103.4887623 NAD 1983 X=800995 Y=618406 LAT.: N 32.6972004 LONG.: W 103.4892550</p>	<p>¹⁸SURVEYOR CERTIFICATION I hereby certify that the well location shown on this plat was plotted from field notes of actual surveys made by me or under my supervision, and that the same is true to the best of my belief.</p> <p>Date of Survey: 12/10/2018 Signature and Seal: <i>[Signature]</i> Certificate Number: 18329</p>	

District I
1625 N. French Dr., Hobbs, NM 88240
Phone: (575) 393-6161 Fax: (575) 393-0720
District II
811 S. First St., Artesia, NM 88210
Phone: (575) 748-1283 Fax: (575) 748-9720
District III
1000 Rio Brazos Road, Aztec, NM 87410
Phone: (505) 334-6178 Fax: (505) 334-6170
District IV
1220 S. St. Francis Dr., Santa Fe, NM 87505
Phone: (505) 476-1460 Fax: (505) 476-1462

State of New Mexico
Energy, Minerals & Natural Resources
Department
OIL CONSERVATION DIVISION
1220 South St. Francis Dr.
Santa Fe, NM 87505

FORM C-102
Revised August 1, 2011
Submit one copy to appropriate
District Office

☐ AMENDED REPORT

WELL LOCATION AND ACREAGE DEDICATION PLAT

¹ API Number 30-025-45437	² Pool Code 960	³ Pool Name AIRSTRIP; BONE SPRING
⁴ Property Code 31486	⁵ Property Name AIRSTRIP 31-18S-35E RN STATE COM	⁶ Well Number #124H
⁷ OCRID No. 228937	⁸ Operator Name MATADOR PRODUCTION COMPANY	⁹ Elevation 3930'

¹⁰Surface Location

UL or lot no.	Section	Township	Range	Lot Idn	Feet from the	North/South line	Feet from the	East/West line	County
P	31	18-S	35-E	-	336'	SOUTH	869'	EAST	LEA

¹¹Bottom Hole Location If Different From Surface

UL or lot no.	Section	Township	Range	Lot Idn	Feet from the	North/South line	Feet from the	East/West line	County
A	31	18-S	35-E	-	100'	NORTH	330'	EAST	LEA

¹² Dedicated Acres 160	¹³ Joint or Infill	¹⁴ Consolidation Code	¹⁵ Order No. CAS-# 20364, R-Pending
---	-------------------------------	----------------------------------	--

No allowable will be assigned to this completion until all interests have been consolidated or a non-standard unit has been approved by the division.

<p>16</p> <p>LAST PERFORATION/ BOTTOM HOLE LOCATION NEW MEXICO EAST NAD 1927 X=759769 Y=623429 LAT.: N 32.7110594 LONG.: W 103.4887850 NAD 1983 X=800949 Y=623493 LAT.: N 32.7111833 LONG.: W 103.4892783</p> <p>SURFACE LOCATION NEW MEXICO EAST NAD 1927 X=759276 Y=618576 LAT.: N 32.6977309 LONG.: W 103.4905140 NAD 1983 X=800456 Y=618640 LAT.: N 32.6978548 LONG.: W 103.4910068</p> <p>FIRST PERFORATION POINT NEW MEXICO EAST NAD 1927 X=759816 Y=618342 LAT.: N 32.6970765 LONG.: W 103.4887623 NAD 1983 X=800996 Y=618406 LAT.: N 32.6972004 LONG.: W 103.4892550</p>	<p>17 OPERATOR CERTIFICATION</p> <p>I hereby certify that the information contained herein is true and complete to the best of my knowledge and belief, and that this organization either owns a working interest or undivided mineral interest in the land including the proposed bottom hole location or has a right to drill that well at this location pursuant to a contract with an owner of such a mineral or working interest, or to a voluntary pooling agreement or a compulsory pooling order heretofore entered by the division.</p> <p><i>[Signature]</i> 12/13/18 Signature Date</p> <p>Samuel Pryor Jr Printed Name</p> <p>SPryor@natresources.com E-mail Address</p> <p>18 SURVEYOR CERTIFICATION</p> <p>I hereby certify that the well location shown on this plat was plotted from field notes of actual surveys made by me or under my supervision, and that the same is true to the best of my belief.</p> <p>12/10/2018 Date of Survey</p> <p><i>[Signature]</i> Signature and Seal</p> <p>MICHAEL BROWN NEW MEXICO 18329 PROFESSIONAL SURVEYOR</p> <p>Certificate Number</p>
---	--

District I
1625 N. French Dr., Hobbs, NM 88240
Phone: (575) 393-6161 Fax: (575) 393-0720
District II
811 S. First St., Artesia, NM 88210
Phone: (575) 748-1283 Fax: (575) 748-9720
District III
1000 Rio Brazos Road, Aztec, NM 87410
Phone: (505) 334-6178 Fax: (505) 334-6170
District IV
1220 S. St. Francis Dr., Santa Fe, NM 87505
Phone: (505) 476-3460 Fax: (505) 476-3462

State of New Mexico
Energy, Minerals & Natural Resources
Department
OIL CONSERVATION DIVISION
1220 South St. Francis Dr.
Santa Fe, NM 87505

FORM C-102
Revised August 1, 2011
Submit one copy to appropriate
District Office

☐ AMENDED REPORT

WELL LOCATION AND ACREAGE DEDICATION PLAT

¹ API Number 30-025-45438	² Pool Code 960	³ Pool Name AIRSTRIP; BONE SPRING
⁴ Property Code 314818	⁵ Property Name AIRSTRIP 31-18S-35E RN STATE COM	⁶ Well Number #134H
⁷ OGRID No. 228937	⁸ Operator Name MATADOR PRODUCTION COMPANY	⁹ Elevation 3930'

¹⁰Surface Location

UL or lot no.	Section	Township	Range	Lot Idn	Feet from the	North/South line	Feet from the	East/West line	County
P	31	18-S	35-E	-	336'	SOUTH	899'	EAST	LEA

¹¹Bottom Hole Location If Different From Surface

UL or lot no.	Section	Township	Range	Lot Idn	Feet from the	North/South line	Feet from the	East/West line	County
A	31	18-S	35-E	-	100'	NORTH	330'	EAST	LEA

¹² Dedicated Acres 160	¹³ Joint or Infill	¹⁴ Consolidation Code	¹⁵ Order No. Case # 20364, R - Pending
---	-------------------------------	----------------------------------	---

No allowable will be assigned to this completion until all interests have been consolidated or a non-standard unit has been approved by the division.

<p>LAST PERFORATION/ BOTTOM HOLE LOCATION NEW MEXICO EAST NAD 1927 X=759769 Y=623429 LAT.: N 32.7110594 LONG.: W 103.4887850 NAD 1983 X=800949 Y=623493 LAT.: N 32.7111833 LONG.: W 103.4892783</p>	<p>SURFACE LOCATION NEW MEXICO EAST NAD 1927 X=759246 Y=618576 LAT.: N 32.6977313 LONG.: W 103.4906116 NAD 1983 X=800426 Y=618640 LAT.: N 32.6978552 LONG.: W 103.4911044</p>	<p>FIRST PERFORATION POINT NEW MEXICO EAST NAD 1927 X=759816 Y=618342 LAT.: N 32.6970765 LONG.: W 103.4887623 NAD 1983 X=800996 Y=618406 LAT.: N 32.6972004 LONG.: W 103.4892550</p>	<p>17 OPERATOR CERTIFICATION I hereby certify that the information contained herein is true and complete to the best of my knowledge and belief, and that this organization either owns a working interest or unleased mineral interest in the land including the proposed bottom hole location or has a right to drill this well at this location pursuant to a contract with an owner of such a mineral or working interest, or to a voluntary pooling agreement or a compulsory pooling order heretofore entered by the division.</p> <p><i>[Signature]</i> 12/13/18 Signature Date Samuel P. Poirer, Jr. Printed Name SPoirer@matadorresources.com E-mail Address</p> <p>18 SURVEYOR CERTIFICATION I hereby certify that the well location shown on this plat was plotted from field notes of actual surveys made by me or under my supervision, and that the same is true to the best of my belief.</p> <p>12/10/2018 Date of Survey <i>[Signature]</i> Signature 18329 Certificate Number</p>
--	--	---	--

District I
1625 N. French Drive, Hobbs, NM 88240
District II
811 S. First St., Artesia, NM 88210
District III
1000 Rio Brazos Road, Aztec, NM 87410
District IV
1220 S. St Francis Dr, Santa Fe, NM
87505

State of New Mexico
Energy, Minerals and Natural Resources Department

Form C-107-B
Revised August 1, 2011

OIL CONSERVATION DIVISION
1220 S. St Francis Drive
Santa Fe, New Mexico 87505

Submit the original
application to the Santa Fe
office with one copy to the
appropriate District Office.

APPLICATION FOR SURFACE COMMINGLING (DIVERSE OWNERSHIP)

OPERATOR NAME: Matador Production Company
OPERATOR ADDRESS: 5400 LBJ Freeway Tower I Suite 1500 Dallas, TX 75240
APPLICATION TYPE:

☐ Pool Commingling ☒ Lease Commingling ☐ Pool and Lease Commingling ☒ Off-Lease Storage and Measurement (Only if not Surface Commingled)

LEASE TYPE: ☒ Fee ☒ State ☐ Federal

Is this an Amendment to existing Order? ☒ Yes ☐ No If "Yes", please include the appropriate Order No. CTB-851
Have the Bureau of Land Management (BLM) and State Land office (SLO) been notified in writing of the proposed commingling
☒ Yes ☐ No

(A) POOL COMMINGLING

Please attach sheets with the following information

(1) Pool Names and Codes	Gravities / BTU of Non-Commingled Production	Calculated Gravities / BTU of Commingled Production		Calculated Value of Commingled Production	Volumes

- (2) Are any wells producing at top allowables? ☐ Yes ☐ No
(3) Has all interest owners been notified by certified mail of the proposed commingling? ☐ Yes ☐ No.
(4) Measurement type: ☐ Metering ☐ Other (Specify)
(5) Will commingling decrease the value of production? ☐ Yes ☐ No If "yes", describe why commingling should be approved

(B) LEASE COMMINGLING

Please attach sheets with the following information

- (1) Pool Name and Code- Airstrip; Bone Spring (Pool Code: 960)
(2) Is all production from same source of supply? ☒ Yes ☐ No
(3) Has all interest owners been notified by certified mail of the proposed commingling? ☒ Yes ☐ No
(4) Measurement type: ☒ Metering ☐ Other (Specify)

(C) POOL and LEASE COMMINGLING

Please attach sheets with the following information

- (1) Complete Sections A and B.

(D) OFF-LEASE STORAGE and MEASUREMENT

Please attached sheets with the following information

- (1) Is all production from same source of supply? ☒ Yes ☐ No
(2) Include proof of notice to all interest owners.

(E) ADDITIONAL INFORMATION (for all application types)

Please attach sheets with the following information

- (1) A schematic diagram of facility, including legal location.
(2) A plat with lease boundaries showing all well and facility locations. Include lease numbers if Federal or State lands are involved.
(3) Lease Names, Lease and Well Numbers, and API Numbers.

I hereby certify that the information above is true and complete to the best of my knowledge and belief.

SIGNATURE: Ben Peterson TITLE: Senior Production Engineer DATE: 2-28-19

TYPE OR PRINT NAME Ben Peterson TELEPHONE NO.: (972) 371-5427

E-MAIL ADDRESS: bpeterson@matadorresources.com

EXHIBIT

3

Matador Production Company

One Lincoln Centre • 5400 LBJ Freeway • Suite 1500 • Dallas, Texas 75240

Voice 972.371.5427 • Fax 972.371.5201

bpeterson@matadorresources.com

Benjamin D. Peterson, P.E.
Senior Production Engineer

February 28, 2019

New Mexico Oil Conservation Division
1220 South St. Francis Drive
Santa Fe, NM 87505

Re: Application of Matador Production Company for Administrative Approval to Amend Administrative Order No. CTB-851 to Allow Off-Lease Measurement and Surface Commingling (lease commingling) of Oil and Gas Production from Four 160-Acre Spacing Units Comprising Section 31, Township 18 South, Range 35 East, NMPM, Eddy County, New Mexico (the “Lands”)

To Whom This May Concern,

Matador Production Company (“Matador”), OGRID: 228937, requests to commingle current oil and gas production from the Airstrip 31-18S-35E RN Nos. 111H, 131H, 132H, 133H, 114H, 124H, and 134H with future production from the Lands as described herein. The wells will be metered through test separators with unique oil turbine meters and gas orifice meters. The gas commingling will occur after individual measurement at each well. Gas exiting the well test flows into a gathering line, as depicted on **Exhibit A**, that connects to Versado Gas Processing, LLC. Each well on the Lands will have its own test separator with an orifice meter manufactured and assembled in accordance with American Gas Association (AGA) specifications. All primary and secondary Electronic Flow Measurement (EFM) equipment is tested and calibrated by a reputable third party measurement company in accordance with industry specifications.

The orifice meter is the preferred measurement device utilized by midstream and E&P companies in natural gas measurement. The gas samples are obtained at the time of the meter testing/calibration and the composition and heating value are determined by a laboratory in accordance with American Petroleum Institute (API) specifications to ensure accurate volume and Energy (MMBTU) determinations. See example from Fesco Laboratory attached as **Exhibit B** hereto.

The flow stream from each wellhead is demonstrated in the Process Flow Diagram (PFD) attached as **Exhibit A** hereto. The PFD shows that the water, oil, and gas leave the wellbore and flow into a wellhead test separator which separates the oil, gas, and water. The oil is measured via turbine meter which is calibrated periodically by a third party measurement company for accuracy. The gas is measured on a volume and MMBTU basis by an orifice meter and supporting EFM

equipment in accordance with American Petroleum Institute (API) Chapter 21.1. The gas is then sent into a sales line where it is metered by another orifice meter at the tank battery check to show the total volume of gas leaving the Tank Battery. This meter is tested and calibrated in accordance with industry specifications and volume and energy are determined on an hourly, daily, and monthly basis. Once the gas exits this final tank battery sales check it travels directly into a third party sales connect meter. Versado Gas Processing, LLC has its own orifice meter that measures the gas for custody transfer. These meters are also calibrated periodically to ensure the measurement accuracy.

In conclusion, all the oil and gas produced on the Lands is and will be metered at each wellhead and allocated correctly using the same measurement equipment as the pipeline sales measurement specifications accepted by API as industry standard.

Very truly yours,

MATADOR PRODUCTION COMPANY

A handwritten signature in black ink, appearing to read 'B. Peterson', written in a cursive style.

Benjamin D. Peterson, P.E.
Sr. Production Engineer

bkf/bdp
attachments



Shipment Confirmation Acceptance Notice

A. Mailer Action

Note to Mailer: The labels and volume associated to this form online, **must** match the labeled packages being presented to the USPS® employee with this form.

Matador - airstrip Commingle
Cm# 83379.0001 20190312
Commingle Notice List

Shipment Date: 03/12/2019

Shipped From:

Name: HOLLAND & HART LLP

Address: 110 N GUADALUPE ST # 1

City: SANTA FE

State: NM ZIP+4® 87501

Type of Mail	Volume
Priority Mail Express®*	
Priority Mail®	0
First-Class Package Service®	
Returns	
International*	
Other	28
Total	28

*Start time for products with service guarantees will begin when mail arrives at the local Post Office™ and items receive individual processing and acceptance scans.

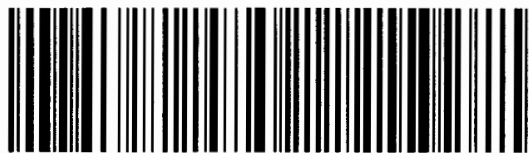
B. USPS Action

Note to RSS Clerk:

1. Home screen > Mailing/Shipping > More
2. Select Shipment Confirm
3. Scan or enter the barcode/label number from PS Form 5630
4. Confirm the volume count message by selecting Yes or No
5. Select Pay and End Visit to complete transaction

USPS EMPLOYEE: Please scan upon pickup or receipt of mail.
Leave form with customer or in customer's mail receptacle.

USPS SCAN AT ACCEPTANCE



9275 0901 1935 6200 0013 2260 45

Johanna K. Little
815 Glenchester
Houston, Texas 77079

Chris Ann Wills
909 Higginbottom Ln
China Spring, Texas 76633-3155

Jill D. Robertson
9 Copper Kettle
Wichita Falls, Texas 76308

Brent Ray Robertson
2520 E. Elliott
Wichita Falls, Texas 76308

Jalapeno Corporation
P.O. Box 1608
Albuquerque, New Mexico 87103

MRC Permian Company
5400 LBJ Freeway, Ste. 1500
Dallas, Texas 75240

MRC Spiral Resources, LLC
5400 LBJ Freeway, Ste. 1500
Dallas, Texas 75240

MRC Explorers Resources, LLC
5400 LBJ Freeway, Ste. 1500
Dallas, Texas 75240

Yates Energy Corporation
P.O. Box 2323
Roswell, New Mexico 88202

Louise Kadane & Michael L. Gustafson,
Trustees of the 4-K Trust pursuant to a
Declaration dated 3/1/1970, at the request
of Matthew B. Kadane Former Interest
of George Kadane
4809 Cole Ave., Ste 100, LB 114
Dallas, Texas 75205

Louise Kadane & Michael L. Gustafson,
Trustees of the 4-K Trust pursuant to a
Declaration dated 3/1/1970, at the request
of Edward G. Kadane, II Former Interest
of George Kadane
4809 Cole Ave., Ste 100, LB 114
Dallas, Texas 75205

State of New Mexico
Commissioner of Public Lands
P.O. Box 1148
Santa Fe, New Mexico 87504-1148

Occidental Permian, Ltd.
P.O. Box 841803
Dallas, Texas 75284-1803

Devon Energy Production Co., LP
333 W. Sheridan Ave
Oklahoma City, Oklahoma 73102

Corbett Petroleum
P.O. Box 11644
Spring, Texas 77391-1644
PetroYates, Inc.
P.O. Box 1608
Albuquerque, New Mexico 87103

Randolph C. Smith
4523 Julian Drive
Mesquite, Texas 75150-8209

Charlotte A. Smith
P.O. Box 199
Torreon, New Mexico 87061

Nadel and Gussman Capitan, LLC
15 East 5th St., Ste. 3300
Tulsa, Oklahoma 74103-4340

Prime Energy Corporation
P.O. Box 4927, MSC 300
Houston, Texas 77210-4927

Mary B. Attaya
5455 LaSierra Dr., No. 612
Dallas, Texas 75231

Judith K. Nix
17 Via Optima
Santa Fe, New Mexico 87507

Estate of Diane Kadane Hughes
a/k/a Mary D. Hughes
4311 University
Dallas, Texas 75205

W.A. Wilson
6318 West Crocus Drive
Glendale, Arizona 85304

Harlena K. Lowenstein
C/O Travis Gist, Wells Fargo
201 Main St., Ste. 400
Fort Worth, Texas 76102

Robert A. Kadane
3001 Kemp Blvd., Apt. 1323
Wichita Falls, Texas 76308-1063

Billie Kirby
#9 Woodland Creek Circle
Wichita Falls, Texas 76302

Emily A. Kadane
4201 Picasso
Wichita Falls, Texas 76308





Firm Mailing Book For Accountable Mail

Name and Address of Sender		Check type of mail or service		Affix Stamp Here (if issued as an international certificate of mailing or for additional copies of this receipt). Postmark with Date of Receipt.													
USPS Tracking/Article Number		Addressee (Name, Street, City, State, & ZIP Code™)		Postage	(Extra Service) Fee	Handling Charge	Actual Value if Registered	Insured Value	Due Sender if COD	ASR Fee	ASRD Fee	RD Fee	RR Fee	SC Fee	SCRD Fee	SH Fee	
1.	9214 8901 9403 8380 0249 02	MRC Permian 5400 LBJ Freeway Ste 1500 Dallas TX 75240		1.75	3.50	Handling charge - Registered and over \$50.00 in value							1.60				
2.	9214 8901 9403 8380 0249 19	MRC Spiral Resources LLC 5400 LBJ Freeway Ste 1500 Dallas TX 75240		1.75	3.50									1.60			
3.	9214 8901 9403 8380 0249 26	MRC Explorers Resources LLC 5400 LBJ Freeway Ste 1500 Dallas TX 75240		1.75	3.50									1.60			
4.	9214 8901 9403 8380 0249 33	Yates Energy Corporation PO BOX 2323 Roswell NM 88202		1.75	3.50									1.60			
5.	9214 8901 9403 8380 0249 40	Louise Kadane & Michael Gustafson Trustees 4809 Cole Ave Ste 100 LB 114 Dallas TX 75205		1.75	3.50									1.60			
6.	9214 8901 9403 8380 0249 57	State of New Mexico Commissioner of Public Lands PO BOX 1148 Santa Fe NM 87504		1.75	3.50									1.60			
7.	9214 8901 9403 8380 0249 64	Occidental Permian Ltd PO BOX 841803 Dallas TX 75284		1.75	3.50									1.60			
8.	9214 8901 9403 8380 0249 71	Devon Energy Production Co LP 333 W Sheridan Ave Oklahoma City OK 73102		1.75	3.50									1.60			
Total Number of Pieces Listed by Sender 28		Total Number of Pieces Received at Post Office		Postmaster, Per (Name of receiving employee)													



Firm Mailing Book For Accountable Mail

Name and Address of Sender Holland & Hart LLP 110 N Guadalupe St # 1 Santa Fe NM 87501		Check type of mail or service <input type="checkbox"/> Adult Signature Required <input type="checkbox"/> Priority Mail Express <input type="checkbox"/> Adult Signature Restricted Delivery <input type="checkbox"/> Registered Mail <input checked="" type="checkbox"/> Certified Mail <input type="checkbox"/> Return Receipt for Merchandise <input type="checkbox"/> Certified Mail Restricted Delivery <input type="checkbox"/> Signature Confirmation <input type="checkbox"/> Collect on Delivery (COD) <input type="checkbox"/> Signature Confirmation Restricted Delivery <input type="checkbox"/> Insured Mail <input type="checkbox"/> Priority Mail		Affix Stamp Here (if issued as an international certificate of mailing or for additional copies of this receipt). Postmark with Date of Receipt.												
USPS Tracking/Article Number		Addressee (Name, Street, City, State, & ZIP Code™)		Postage	(Extra Service) Fee	Handling Charge	Actual Value if Registered	Insured Value	Due Sender if COD	ASR Fee	ASRD Fee	RD Fee	RR Fee	SC Fee	SCRD Fee	SH Fee
9. 9214 8901 9403 8380 0249 88		Corbett Petroleum PO BOX 11644 Spring TX 77391		1.75	3.50	Handling Charge - If Registered and over \$50.00 in value							1.60			
10. 9214 8901 9403 8380 0249 95		Petro Yates Inc PO BOX 1608 Albuquerque NM 87103		1.75	3.50	Handling Charge - If Registered and over \$50.00 in value							1.60			
11. 9214 8901 9403 8380 0250 08		Randolph C Smith 4523 Julian Drive Mesquite TX 75150		1.75	3.50	Handling Charge - If Registered and over \$50.00 in value							1.60			
12. 9214 8901 9403 8380 0250 15		Charlotte A Smith PO BOX 199 Torreon NM 87061		1.75	3.50	Handling Charge - If Registered and over \$50.00 in value							1.60			
13. 9214 8901 9403 8380 0250 22		Nadel & Gussman Capitan LLC 15 East 5th St Ste 3300 Tulsa OK 74103		1.75	3.50	Handling Charge - If Registered and over \$50.00 in value							1.60			
14. 9214 8901 9403 8380 0250 39		Prine Energy Corporation PO BOX 4927 MSC 300 Houston TX 77210		1.75	3.50	Handling Charge - If Registered and over \$50.00 in value							1.60			
15. 9214 8901 9403 8380 0250 46		Mary B Attaya 5455 LaSierra Dr No 612 Dallas TX 75231		1.75	3.50	Handling Charge - If Registered and over \$50.00 in value							1.60			
16. 9214 8901 9403 8380 0250 53		Judith K Nix 17 Via Optima Santa Fe NM 87507		1.75	3.50	Handling Charge - If Registered and over \$50.00 in value							1.60			
Total Number of Pieces Listed by Sender 28		Total Number of Pieces Received at Post Office		Postmaster, Per (Name of receiving employee)												



Firm Mailing Book For Accountable Mail

Name and Address of Sender Holland & Hart LLP 110 N Guadalupe St # 1 Santa Fe NM 87501		Check type of mail or service <input type="checkbox"/> Adult Signature Required <input type="checkbox"/> Priority Mail Express <input type="checkbox"/> Adult Signature Restricted Delivery <input type="checkbox"/> Registered Mail <input checked="" type="checkbox"/> Certified Mail <input type="checkbox"/> Return Receipt for Merchandise <input type="checkbox"/> Certified Mail Restricted Delivery <input type="checkbox"/> Signature Confirmation <input type="checkbox"/> Collect on Delivery (COD) <input type="checkbox"/> Signature Confirmation Restricted Delivery <input type="checkbox"/> Insured Mail <input type="checkbox"/> Priority Mail		Affix Stamp Here (if issued as an international certificate of mailing or for additional copies of this receipt). Postmark with Date of Receipt.												
USPS Tracking/Article Number	Addressee (Name, Street, City, State, & ZIP Code™)		Postage	(Extra Service) Fee	Handling Charge	Actual Value if Registered	Insured Value	Due Sender if COD	ASR Fee	ASRD Fee	RD Fee	RR Fee	SC Fee	SCRD Fee	SH Fee	
17. 9214 8901 9403 8380 0250 60	Estate of Diane Kadane Houghes aka Mary Hughes 4311 University Dallas TX 75205		1.75	3.50								1.60				
18. 9214 8901 9403 8380 0250 77	W A Wilson 6318 West Crocas Dr Glendale AZ 85304		1.75	3.50								1.60				
19. 9214 8901 9403 8380 0250 84	Harlena K Lowenstein c/o Travis Gist 201 Main St Ste 400 Ft Worth TX 76102		1.75	3.50								1.60				
20. 9214 8901 9403 8380 0250 91	Robert A Kadane 3001 Kemp Blvd Apt 1323 Wichita Falls TX 76308		1.75	3.50								1.60				
21. 9214 8901 9403 8380 0251 07	Billie Kirby Woodland Creek Circle #9 Wichita Falls TX 76302		1.75	3.50								1.60				
22. 9214 8901 9403 8380 0251 14	Emily A Kadane 4201 Picasso Wichita Falls TX 76308		1.75	3.50								1.60				
23. 9214 8901 9403 8380 0251 21	Johanna K Little 815 Glenchester Houston TX 77079		1.75	3.50								1.60				
24. 9214 8901 9403 8380 0251 38	Chris Ann Wills 909 Higginbottom Ln China Spring TX 76633		1.75	3.50								1.60				
Total Number of Pieces Listed by Sender 28	Total Number of Pieces Received at Post Office	Postmaster, Per (Name of receiving employee)														



Firm Mailing Book For Accountable Mail

[illegible]

State of New Mexico
Energy, Minerals and Natural Resources Department

Susana Martinez
Governor

Ken McQueen
Cabinet Secretary

Matthias Sayer
Deputy Cabinet Secretary

Heather Riley, Division Director
Oil Conservation Division



April 12, 2018

MATADOR PRODUCTION COMPANY
Attention: Mr. Michael Feldewert

CENTRAL TANK BATTERY

Administrative Order CTB-851
Administrative Application Reference No. pMAM180605722

Reference your application received February 28, 2018.

The Oil Conservation Division (Division) authorizes Matador Production Company (OGRID 228937) (Matador) to surface commingle oil and gas production from the Airstrip; Bone Spring pool (pool code 960) from the following diversely-owned state leases located in Section 31, Township 18 South, Range 35 East, Lea County, New Mexico.

Lease: Airstrip 31 18 35 RN State Com Well No. 131H Lease
Description: Lot 1, Lot 2, Lot 3, and Lot 4 (W/2 W/2 equivalent) of Section 31
Well: Airstrip 31 18 35 RN State Com Well No. 131H API No. 30-025-44509

Lease: Airstrip 31 18 35 RN State Com Well No. 132H Lease: Division Order R-14378
Description: E/2 W/2 of Section 31
Well: Airstrip 31 18 35 RN State Com Well 132H API No. 30-025-43816

Lease: Airstrip 31 18 35 RN State Com Well No. 133H Lease
Description: W/2 E/2 of Section 31
Well: Airstrip 31 18 35 RN State Com Well No. 133H API No. 30-025-44323

The commingled oil and gas production from the wells detailed above shall be measured and sold at the Airstrip State BSPG Central Tank Battery (CTB), located in the Lot 4/M-31-18S-35E.

Production from the subject wells shall be determined as follows.

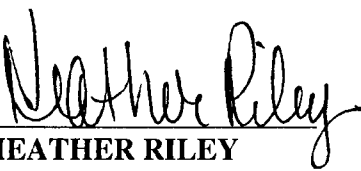
1. The oil and gas production from each of the diversely-owned leases shall be measured with allocation meters.

2. The oil and gas production from each well will flow into a dedicated 3-phase separator. The production stream will be separated into three independent streams by the separator and each stream will be measured individually after it exits the separator, before commingling.
3. The allocation meters shall be calibrated quarterly per Paragraph (2) of Subsection C of 19.15.12.10 NMAC.

Matador may add future wells that produce from the subject pool within the project areas approved by this order to this commingling authority by submitting a Sundry Notice to the Engineering Bureau of the Division in Santa Fe.

Matador shall install and operate these facilities per Division rules. Matador shall notify the transporter of this commingling authority.

Matador shall notify the Hobbs District Office of the Division prior to starting commingling operations.


HEATHER RILEY
Director

HR/mam/rbb

cc: Oil Conservation Division – Hobbs
New Mexico State Land Office – Oil, Gas, and Minerals

OCD Permitting

HomeOCD OnlyLand SearchesLand Details

Section : 31-18S-35E

Type: Normal

Total Acres: 634.28

County: Lea (25)

D (1) State ¹ State ² (25) 38.55	C (C) State ¹ State ² (25) 40	B (B) State ¹ State ² (25) 40	A (A) State ¹ State ² (25) 40
E (2) State ¹ State ² (25) 38.56	F (F) Fee ¹ Fee ² (25) 40	G (G) Fee ¹ Fee ² (25) 40	H (H) Fee ¹ Fee ² (25) 40
L (3) State ¹ State ² (25) 38.58	K (K) Fee ¹ Fee ² (25) 40	J (J) Fee ¹ Fee ² (25) 40	I (I) Fee ¹ Fee ² (25) 40
M (4) State ¹ State ² (25) 38.59	N (N) State ¹ State ² (25) 40	O (O) State ¹ State ² (25) 40	P (P) Fee ¹ Fee ² (25) 40

Note¹ = Surface Owner Rights

Note² = Sub-Surface Mineral Rights

Land Restrictions

No land restrictions found for this section.

Return to Section