

Application

Part *II*

District I

1625 N. French Dr., Hobbs, NM 88240
Phone: (575) 393-6161 Fax: (575) 393-0720

District II

811 S. First St., Artesia, NM 88210
Phone: (575) 748-1283 Fax: (575) 748-9720

District III

1000 Rio Brazos Road, Aztec, NM 87410
Phone: (505) 334-6178 Fax: (505) 334-6170

District IV

1220 S. St. Francis Dr., Santa Fe, NM 87505
Phone: (505) 476-3460 Fax: (505) 476-3462

State of New Mexico

Form C-101
Revised July 18, 2013

Energy Minerals and Natural Resources**Oil Conservation Division**
☐ AMENDED REPORT

1220 South St. Francis Dr.

Santa Fe, NM 87505

APPLICATION FOR PERMIT TO DRILL, RE-ENTER, DEEPEN, PLUGBACK, OR ADD A ZONE

| | | |
|---|---|--------------------------------------|
| ^{1.} Operator Name and Address SOLARIS WATER MIDSTREAM, LLC 701 TRADEWINDS BLVD., SUITE C MIDLAND, TX 79706 | | ^{2.} OGRID Number 371643 |
| | | ^{3.} API Number TBD |
| ^{4.} Property Code | ^{5.} Property Name TRIVETTE FED SWD | ^{6.} Well No. 1 |

^{7.} Surface Location

| UL - Lot | Section | Township | Range | Lot Idn | Feet from | N/S Line | Feet From | E/W Line | County |
|----------|---------|----------|-------|---------|-----------|----------|-----------|----------|--------|
| D | 23 | 26 S | 30 E | | 990 | N | 215 | W | EDDY |

^{8.} Proposed Bottom Hole Location

| UL - Lot | Section | Township | Range | Lot Idn | Feet from | N/S Line | Feet From | E/W Line | County |
|----------|---------|----------|-------|---------|-----------|----------|-----------|----------|--------|
| - | - | - | - | - | - | - | - | - | - |

^{9.} Pool Information

| Pool Name | Pool Code |
|------------------------|-----------|
| SWD: Devonian-Silurian | 97869 |

Additional Well Information

| | | | | |
|-------------------------------|--|---|--------------------------------------|--|
| ^{11.} Work Type N | ^{12.} Well Type SWD | ^{13.} Cable/Rotary R | ^{14.} Lease Type Private | ^{15.} Ground Level Elevation 3096' |
| ^{16.} Multiple N | ^{17.} Proposed Depth 18,333' | ^{18.} Formation Devonian-Silurian | ^{19.} Contractor TBD | ^{20.} Spud Date ASAP |
| Depth to Ground water 226' | | Distance from nearest fresh water well 1.5 miles | | Distance to nearest surface water >1 mile |

☒ We will be using a closed-loop system in lieu of lined pits

^{21.} Proposed Casing and Cement Program

| Type | Hole Size | Casing Size | Casing Weight/ft | Setting Depth | Sacks of Cement | Estimated TOC |
|--------------|-----------|-------------|---------------------|----------------------------------|-----------------|---------------|
| Surface | 18.125" | 16" | 84 lb/ft | 1,239' | 946 | Surface |
| Intermediate | 14.75" | 13.375" | 68 lb/ft | 3,718' | 914 | Surface |
| Production | 12.25" | 9.625" | 53.5 lb/ft | 12,226' | 2924 | Surface |
| Liner | 8.5" | 7.625" | 39 lb/ft | 12,026' - 16,533' | 485 | 12,026' |
| Tubing | | 5.5" & 5" | 20 lb/ft & 18 lb/ft | 0' - 11,826' & 11,826' - 16,483' | N/A | |

Casing/Cement Program: Additional Comments

See attached schematic.

^{22.} Proposed Blowout Prevention Program

| Type | Working Pressure | Test Pressure | Manufacturer |
|-------------------------------|------------------|---------------|------------------------|
| Double Hydraulic/Blinds, Pipe | 8,000 psi | 10,000 psi | TBD - Schaffer/Cameron |

^{23.} I hereby certify that the information given above is true and complete to the best of my knowledge and belief.

I further certify that I have complied with 19.15.14.9 (A) NMAC ☐ and/or 19.15.14.9 (B) NMAC ☒, if applicable.

Signature: 

Printed name: Ramona Hovey

Title: Consulting Engineer

E-mail Address: ramona@lonquist.com

Date: July 25, 2019

Phone: 512-600-1777

OIL CONSERVATION DIVISION

Approved By:

Title:

Approved Date:

Expiration Date:

Conditions of Approval Attached

DISTRICT I
1625 N. French Dr., Hobbs, NM 88240
Phone (505) 393-6161 Fax: (505) 393-0720

DISTRICT II
811 S. First St., Artesia, NM 88210
Phone (505) 748-1283 Fax: (505) 748-9720

DISTRICT III
1000 Rio Brazos Rd., Aztec, NM 87410
Phone (505) 334-6176 Fax: (505) 334-6170

DISTRICT IV
1220 S. St. Francis Dr., Santa Fe, NM 87505
Phone (505) 476-3460 Fax: (505) 476-3462

State of New Mexico
Energy, Minerals and Natural Resources Department

Form C-102
Revised August 1, 2011

Submit one copy to appropriate
District Office

OIL CONSERVATION DIVISION

1220 South St. Francis Dr.
Santa Fe, New Mexico 87505

WELL LOCATION AND ACREAGE DEDICATION PLAT

☐ AMENDED REPORT

| | | |
|---------------------|--|--------------------------------|
| API Number | Pool Code 97869 | Pool Name Devonian-Silurian |
| Property Code | Property Name TRIVETTE FED SWD | Well Number 1 |
| OGRID No. 371643 | Operator Name SOLARIS WATER MIDSTREAM | Elevation 3096' |

Surface Location

| | | | | | | | | | |
|--------------------|---------------|------------------|---------------|---------|----------------------|---------------------------|----------------------|------------------------|----------------|
| UL or lot No. D | Section 23 | Township 26 S | Range 30 E | Lot Idn | Feet from the 990 | North/South line NORTH | Feet from the 215 | East/West line WEST | County EDDY |
|--------------------|---------------|------------------|---------------|---------|----------------------|---------------------------|----------------------|------------------------|----------------|

Bottom Hole Location If Different From Surface

| | | | | | | | | | |
|---------------|---------|----------|-------|---------|---------------|------------------|---------------|----------------|--------|
| UL or lot No. | Section | Township | Range | Lot Idn | Feet from the | North/South line | Feet from the | East/West line | County |
|---------------|---------|----------|-------|---------|---------------|------------------|---------------|----------------|--------|

| | | | |
|-----------------|-----------------|--------------------|-----------|
| Dedicated Acres | Joint or Infill | Consolidation Code | Order No. |
|-----------------|-----------------|--------------------|-----------|

NO ALLOWABLE WILL BE ASSIGNED TO THIS COMPLETION UNTIL ALL INTERESTS HAVE BEEN CONSOLIDATED
OR A NON-STANDARD UNIT HAS BEEN APPROVED BY THE DIVISION

N:376912.7
E:687848.3
(NAD 83)

N:376947.8
E:693181.1
(NAD 83)

SURFACE LOCATION
Lat - N 32.032612°
Long - W 103.859820°
NADSPCE - N 375924.3
E 688069.8
(NAD-83)

OPERATOR CERTIFICATION

I hereby certify that the information contained herein is true and complete to the best of my knowledge and belief, and that this organization either owns a working interest or unleased mineral interest in the land including the proposed bottom hole location or has a right to drill this well at this location pursuant to a contract with an owner of such a mineral or working interest, or to a voluntary pooling agreement or a compulsory pooling order heretofore entered by the division.

Ramona K. Hovey 7/15/19
Signature Date

RAMONA K. HOVEY
Printed Name

ramona@longquist.com
Email Address

SURVEYOR CERTIFICATION

I hereby certify that the well location shown on this plat was plotted from field notes of actual surveys made by me or under my supervision, and that the same is true and correct to the best of my belief.

JUNE 22, 2019
Date Surveyed
Signature & Seal of Professional Surveyor

Ramona K. Hovey
Certificate No. 7977
Surveyor

0' 500' 1000' 1500' 2000'
SCALE: 1" = 1000'
WO Num.: 34645

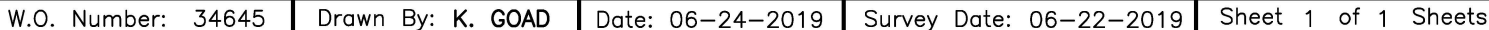


basisin
surveys
focused on excellence
in the oilfield

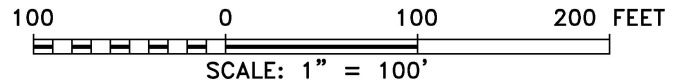
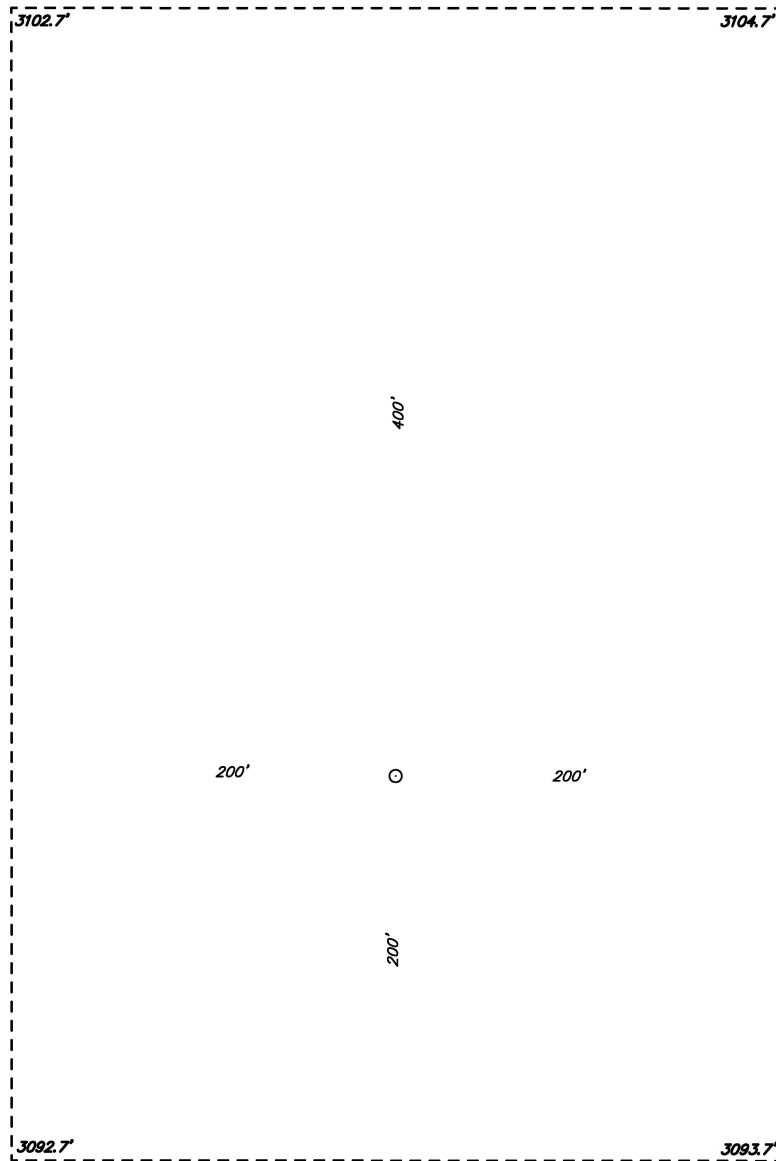


SOLARIS
WATER MIDSTREAM

THE TRIVETTE FED SWD #1 LOCATED 990' FROM
THE NORTH LINE AND 215' FROM THE WEST LINE OF
SECTION 23, TOWNSHIP 26 SOUTH, RANGE 30 EAST
N.M.P.M., EDDY COUNTY, NEW MEXICO.



**SECTION 23, TOWNSHIP 26 SOUTH, RANGE 30 EAST, N.M.P.M.,
EDDY COUNTY, NEW MEXICO.**



SOLARIS WATER MIDSTREAM

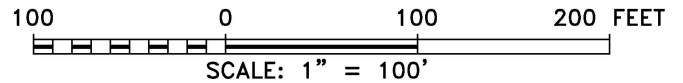
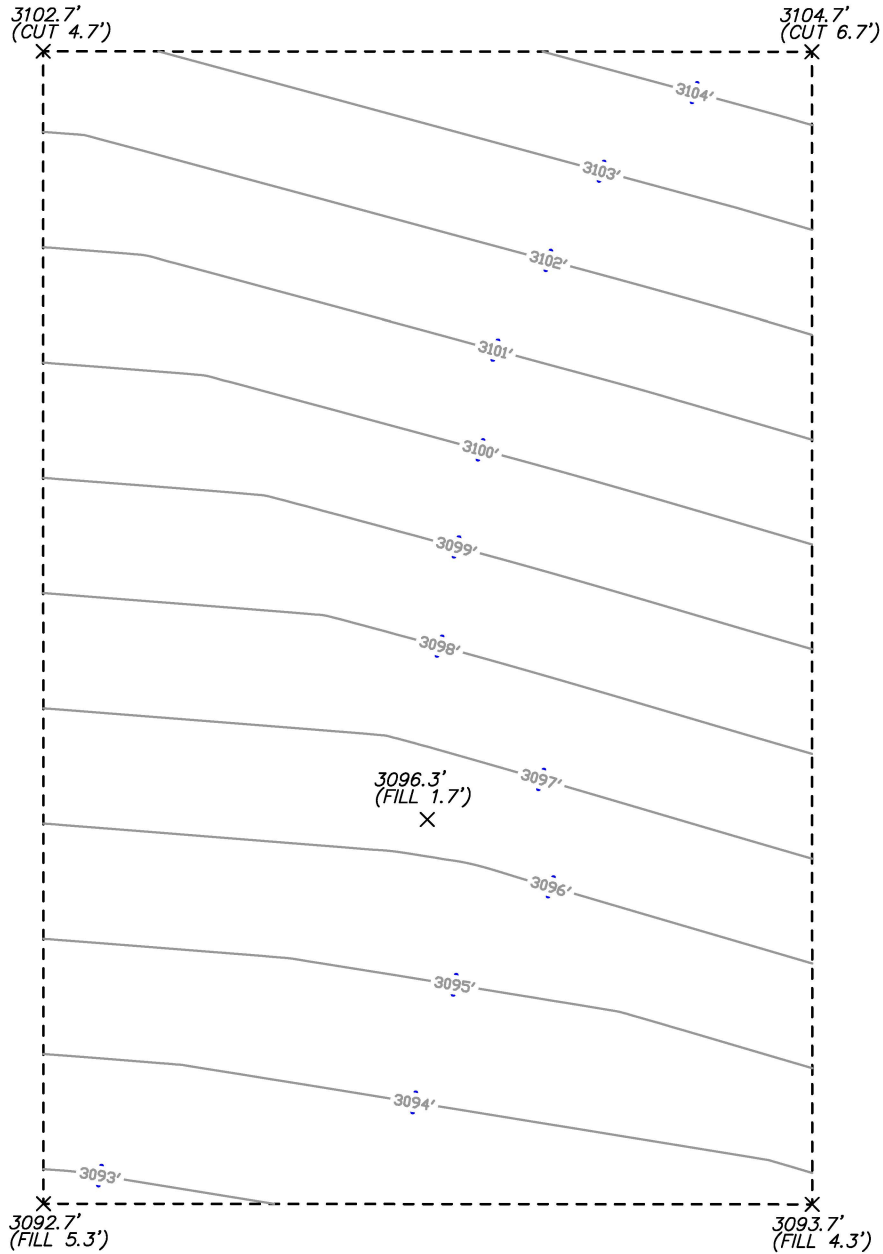
REF: TRIVETTE FED SWD #1 / WELL•PAD TOPO

*THE TRIVETTE FED SWD #1 LOCATED 990' FROM
THE NORTH LINE AND 215' FROM THE WEST LINE OF
SECTION 23, TOWNSHIP 26 SOUTH, RANGE 30 EAST
N.M.P.M., EDDY COUNTY, NEW MEXICO.*



P.O. Box 1786 (575) 393-7316 - Office
1120 N. West County Rd. (575) 392-2206 - Fax
Hobbs, New Mexico 88241 basin-surveys.com

**SECTION 23, TOWNSHIP 26 SOUTH, RANGE 30 EAST, N.M.P.M.,
EDDY COUNTY, NEW MEXICO.**



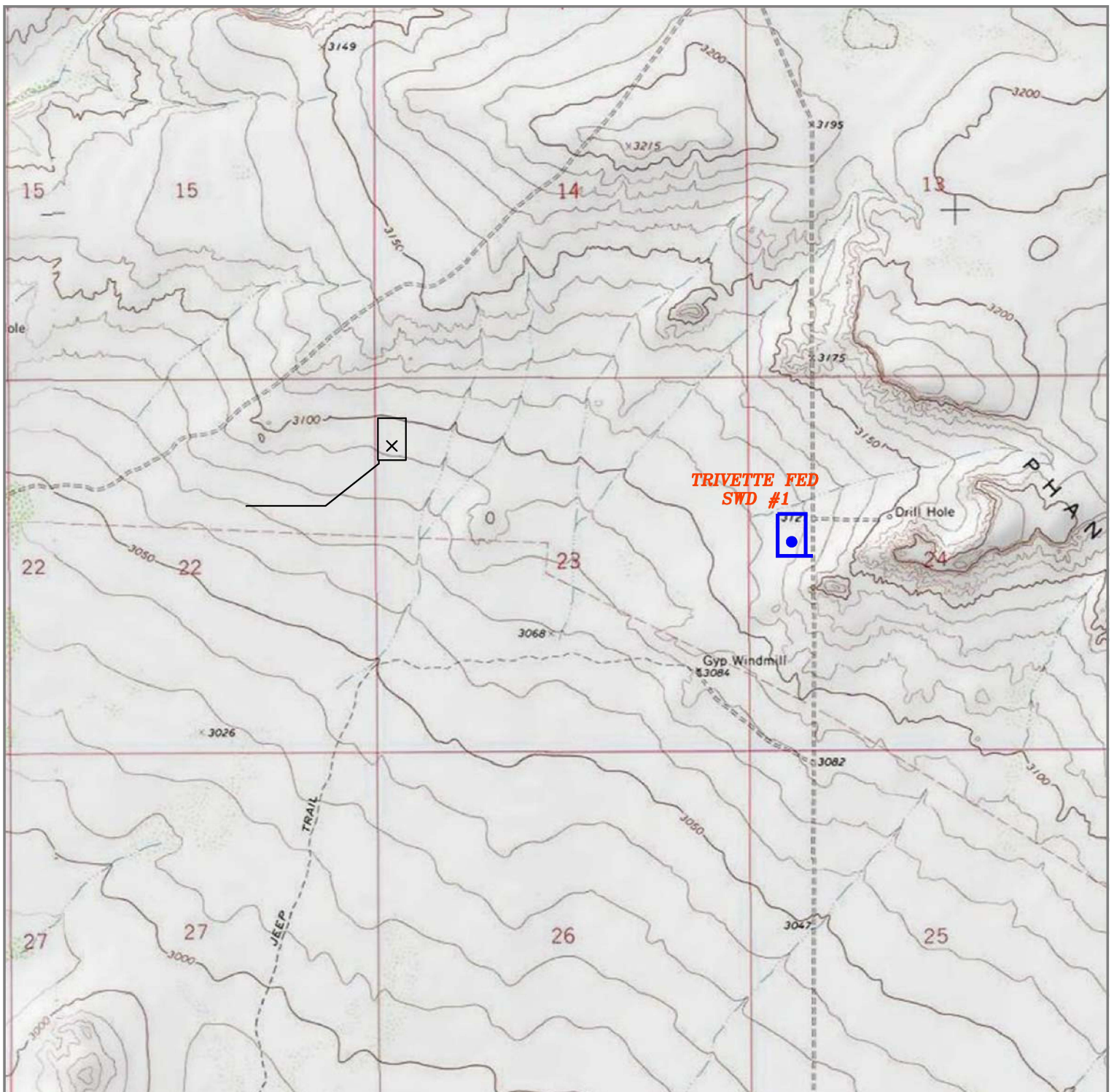
SOLARIS WATER MIDSTREAM

REF: TRIVETTE FED SWD #1 / CUT & FILL

THE TRIVETTE FED SWD #1 LOCATED 990' FROM
THE NORTH LINE AND 215' FROM THE WEST LINE OF
SECTION 23, TOWNSHIP 26 SOUTH, RANGE 30 EAST
N.M.P.M., EDDY COUNTY, NEW MEXICO.

**basin
surveys**
focused on excellence
in the oilfield

P.O. Box 1786 (575) 393-7316 - Office
1120 N. West County Rd. (575) 392-2206 - Fax
Hobbs, New Mexico 88241 basin-surveys.com



TRIVETTE FED SWD #1

Located 2395' FNL & 595' FWL
 Section 24, Township 26 South, Range 30 East,
 N.M.P.M., Eddy County, New Mexico.



P.O. Box 1786
 1120 N. West County Rd.
 Hobbs, New Mexico 88241
 (575) 393-7316 - Office
 (575) 392-2206 - Fax
 basinsurveys.com

0' 1000' 2000' 3000' 4000'

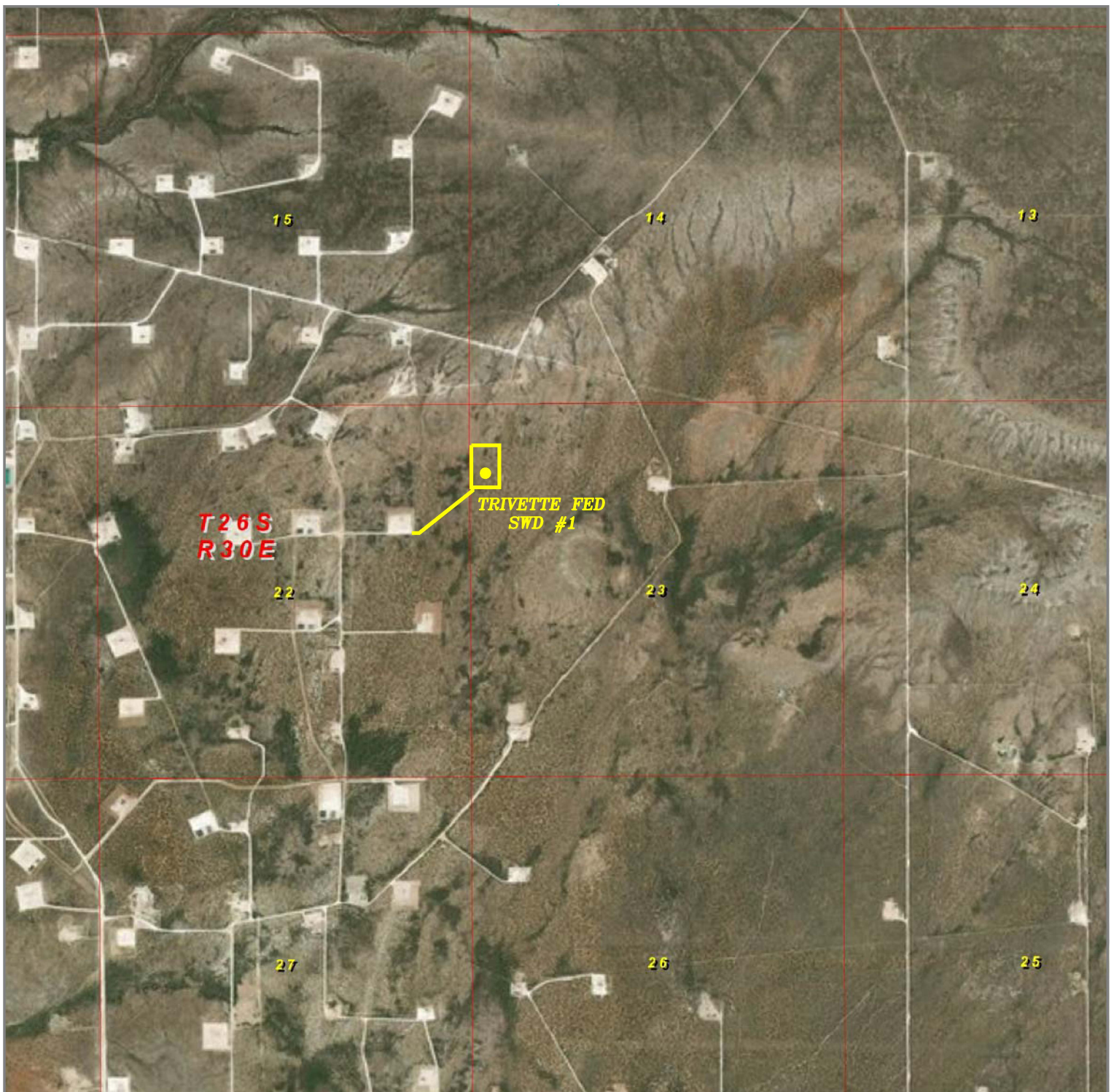
SCALE: 1" = 2000'

W.O. Number: KJG - 34645

Survey Date: 09-11-2018

YELLOW TINT - USA LAND
 BLUE TINT - STATE LAND
 NATURAL COLOR - FEE LAND





TRIVETTE FED SWD #1

Located 2395' FNL & 595' FWL
Section 24, Township 26 South, Range 30 East,
N.M.P.M., Eddy County, New Mexico.



P.O. Box 1786
1120 N. West County Rd.
Hobbs, New Mexico 88241
(575) 393-7316 - Office
(575) 392-2206 - Fax
basinsurveys.com

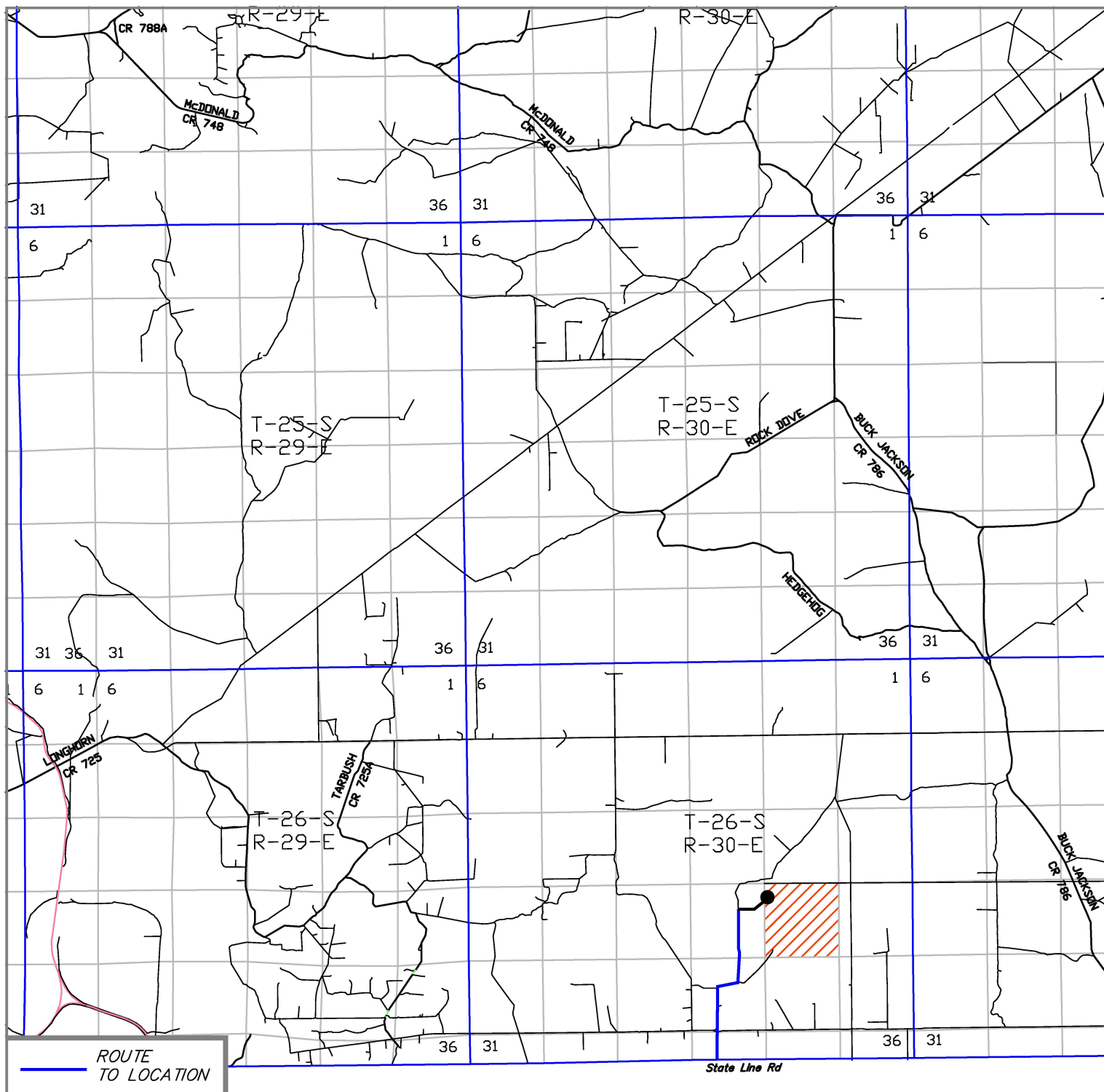
0' 1000' 2000' 3000' 4000'
SCALE: 1" = 2000'

W.O. Number: KJG - 34645

Survey Date: 09-11-2018

YELLOW TINT - USA LAND
BLUE TINT - STATE LAND
NATURAL COLOR - FEE LAND





TRIVETTE FED SWD #1

Located 2395' FNL & 595' FWL
 Section 24, Township 26 South, Range 30 East,
 N.M.P.M., Eddy County, New Mexico.



P.O. Box 1786
 1120 N. West County Rd.
 Hobbs, New Mexico 88241
 (575) 393-7316 - Office
 (575) 392-2206 - Fax
 basinsurveys.com

0 1 MI 2 MI 3 MI 4 MI

SCALE: 1" = 2 MILES

W.O. Number: KJG 34645

Survey Date: 09-11-2018

YELLOW TINT - USA LAND
 BLUE TINT - STATE LAND
 NATURAL COLOR - FEE LAND

