

WKRCI-200221-C-107B 666

Revised March 23, 2017

RECEIVED: 2/21/20	REVIEWER: DM	TYPE: PLC	APP NO: pDM2008561737
-------------------	--------------	-----------	-----------------------

ABOVE THIS TABLE FOR OCD DIVISION USE ONLY

NEW MEXICO OIL CONSERVATION DIVISION
 - Geological & Engineering Bureau -
 1220 South St. Francis Drive, Santa Fe, NM 87505

**ADMINISTRATIVE APPLICATION CHECKLIST**

THIS CHECKLIST IS MANDATORY FOR ALL ADMINISTRATIVE APPLICATIONS FOR EXCEPTIONS TO DIVISION RULES AND REGULATIONS WHICH REQUIRE PROCESSING AT THE DIVISION LEVEL IN SANTA FE

Applicant: Matador Production Company **OGRID Number:** 228937
Well Name: Boros Federal No. 103H well, et al. **API:** 30-015-46530
Pool: Jennings; Bone Spring, West & Purple Sage; Wolfcamp **Pool Code:** 97860, 98220

SUBMIT ACCURATE AND COMPLETE INFORMATION REQUIRED TO PROCESS THE TYPE OF APPLICATION INDICATED BELOW

- 1) **TYPE OF APPLICATION:** Check those which apply for [A]
 A. Location – Spacing Unit – Simultaneous Dedication
☐ NSL ☐ NSP (PROJECT AREA) ☐ NSP (PRORATION UNIT) ☐ SD
 B. Check one only for [I] or [II]
 [I] Commingling – Storage – Measurement
☐ DHC ☐ CTB ☒ PLC ☐ PC ☐ OLS ☐ OLM
 [II] Injection – Disposal – Pressure Increase – Enhanced Oil Recovery
☐ WFX ☐ PMX ☐ SWD ☐ IPI ☐ EOR ☐ PPR

2) **NOTIFICATION REQUIRED TO:** Check those which apply.

- A. ☐ Offset operators or lease holders
 B. ☒ Royalty, overriding royalty owners, revenue owners
 C. ☐ Application requires published notice
 D. ☐ Notification and/or concurrent approval by SLO
 E. ☒ Notification and/or concurrent approval by BLM
 F. ☐ Surface owner
 G. ☒ For all of the above, proof of notification or publication is attached, and/or,
 H. ☐ No notice required

FOR OCD ONLY

- ☐ Notice Complete
☐ Application Content Complete

- 3) **CERTIFICATION:** I hereby certify that the information submitted with this application for administrative approval is **accurate** and **complete** to the best of my knowledge. I also understand that **no action** will be taken on this application until the required information and notifications are submitted to the Division.

Note: Statement must be completed by an individual with managerial and/or supervisory capacity.

Kaitlyn A. Luck

Print or Type Name

Signature

02/21/2020

Date

505-954-7286

Phone Number

kaluck@hollandhart.com

e-mail Address



Kaitlyn A. Luck
Phone (505) 954-7286
kaluck@hollandhart.com

February 21, 2020

VIA ONLINE FILING

Adrienne Sandoval
Director, Oil Conservation Division
New Mexico Department of Energy,
Minerals and Natural Resources
1220 South Saint Francis Drive
Santa Fe, New Mexico 87505

Re: Application of Matador Production Company to authorize pool and lease commingling, off-lease storage, off lease measurement, and off-lease marketing at the Boros Fed East Tank Battery located in the N/2 NE/4 (Units A & B) of Section 15, Township 26 South, Range 31 East, NMPM, Eddy County, New Mexico.

Dear Ms. Sandoval:

Pursuant to 19.15.12.7 NMAC, individual spacing units are considered separate “leases” for surface commingling purposes. Accordingly, Matador Production Company (OGRID No. 228937) seeks administrative approval for pool and lease commingling, off-lease storage, off-lease measurement, and off-lease marketing at the **Boros Fed East Tank Battery** of production from the Jennings; Bone Spring, West (97860); and the Purple Sage; Wolfcamp (98220) pools from *all existing and future wells drilled in the following “leases”*:

(a) The 320-acre, more or less, spacing unit in the Jennings; Bone Spring, West Pool (97860) underlying the W/2 E/2 of Sections 15 and 22. The spacing unit is currently dedicated to the **Boros Federal #103H well** (API No. 30-015-46530), **Boros Federal #123H well** (API No. 30-015-46495), **Boros Federal #133H well** (API No. 30-015-46571);

(b) The 640-acre, more or less, spacing unit in the Purple Sage; Wolfcamp Pool (98220) underlying the W/2 E/2 of Sections 15 and 22. The spacing unit is currently dedicated to the **Boros Federal #203H well** (API No. 30-015-46565), **Boros Federal #217H well** (API No. 30-015-46566), **Boros Federal #223H well** (API No. 30-015-46494);

(c) The 320-acre, more or less, spacing unit in the Jennings; Bone Spring, West Pool (97860) underlying the E/2 E/2 of Sections 15 and 22. The spacing unit is currently dedicated to the **Boros Federal #104H well** (API No. 30-015-46511), **Boros Federal #124H well** (API No. 30-015-46479), **Boros Federal #134H well** (API No. 30-015-46513);

(d) The 640-acre, more or less, spacing unit in the Purple Sage; Wolfcamp Pool (98220) underlying the E/2 E/2 of Sections 15 and 22. The spacing unit is currently dedicated to the **Boros Federal #204H well** (API No. 30-015-46480), **Boros Federal #218H well** (API No. 30-015-46493), **Boros Federal #224H well** (API No. 30-015-46443); and

(e) Pursuant to 19.15.12.10.C(4)(g), *future spacing units connected to this central tank battery* with notice provided only to the interest owners within these future "leases."

Oil and gas production from these "leases" will be commingled and sold at the **Boros Fed East Tank Battery located in the N/2 NE/4 (Units A & B) of Section 15**. Prior to commingling, gas production from each "lease" will be separately metered using individual test separators with calibrated orifice meters that are manufactured to AGA specifications. Oil production from each "lease" will also be separately metered using turbine meters.

Exhibit 1 is a land plat showing Matador's current development plan, flow lines, and central tank battery ("production facility") in the subject area. The plat identifies the wellbores, the existing spacing units, and the common surface facilities located in the **N/2 NE/4 (Units A & B) of Section 15**.

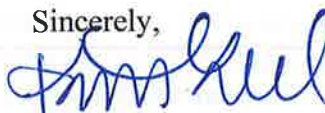
Exhibit 2 is a C-102 for each of the wells currently permitted or drilled within the existing spacing units.

Exhibit 3 is a completed Application for Surface Commingling (Diverse Ownership) Form C-107-B, that includes a statement from Brian Fancher, Regulatory Manager with Matador, identifying the facilities and the measurement devices to be utilized, a detailed schematic of the surface facilities (attachment A to the statement) and a referenced gas sample (attachment B to the statement).

Matador Production Company owns 100% of the working interest ownership in the subject leases in Sections 15 and 22. The Bureau of Land Management is the only royalty interest owner and has been provided notice of this application. There are no overriding royalty interest owners. **Exhibit 4** is a copy of the letter sent by certified mail advising the BLM that any objections must be filed in writing with the Division within 20 days from the date the Division receives this application, and proof of mailing.

Thank you for your attention to this matter, and please feel free to call if you have any questions or require additional information.

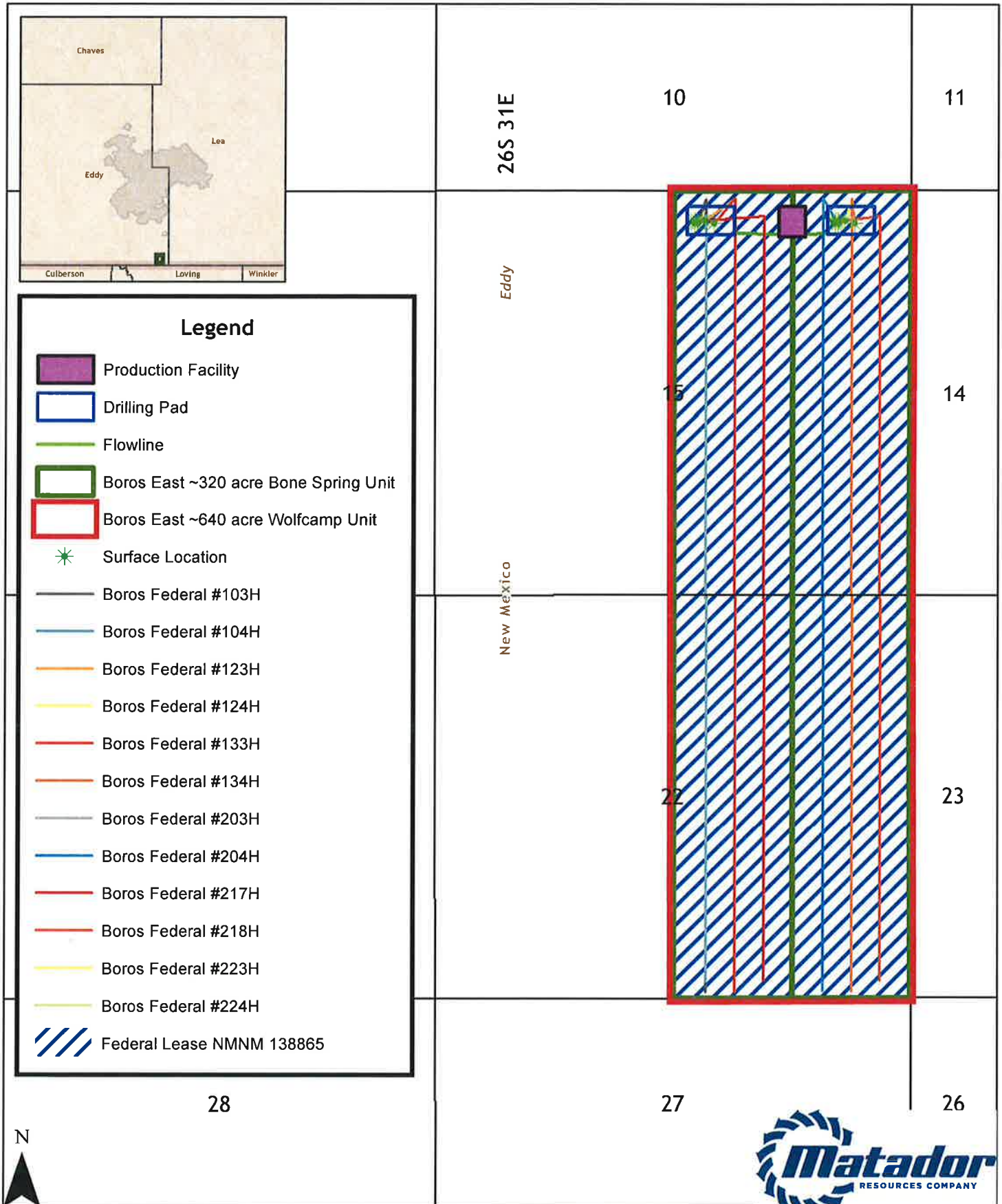
Sincerely,



Kaitlyn A. Luck

**ATTORNEY FOR MATADOR PRODUCTION
COMPANY**

Boros East Land Plat



EXHIBIT



Southeast New Mexico

Date: 2/11/2020

Document Name: BorosEast_Commingleing
 Coordinate System: GCS WGS 1984

0 750 1,500 3,000 Feet

District I
1625 N. French Dr., Hobbs, NM 88240
Phone: (575) 393-6161 Fax: (575) 393-0720
District II
811 S. First St., Artesia, NM 88210
Phone: (575) 748-1283 Fax: (575) 748-9720
District III
1000 Rio Brazos Road, Aztec, NM 87410
Phone: (505) 334-6178 Fax: (505) 334-6170
District IV
1220 S. St. Francis Dr., Santa Fe, NM 87505
Phone: (505) 476-3460 Fax: (505) 476-3462

State of New Mexico
Energy, Minerals & Natural Resources

Department DEC 09 2019
OIL CONSERVATION DIVISION

1220 South St. Francis Dr.
Santa Fe, NM 87505
DISTRICT IV ARTESIA O.C.D.

FORM C-102

Revised August 1, 2011

Submit one copy to appropriate

District Office

☐ AMENDED REPORT

WELL LOCATION AND ACREAGE DEDICATION PLAT

¹ API Number 30-015-46530	² Pool Code 97860	³ Pool Name Jennings Bone Spring West.
⁴ Property Code 326329	⁵ Property Name BOROS FEDERAL	⁶ Well Number 103H
⁷ OGRID No. 228937	⁸ Operator Name MATADOR PRODUCTION COMPANY	⁹ Elevation 3227'

¹⁰Surface Location

UL or lot no.	Section	Township	Range	Lot Idn	Feet from the	North/South line	Feet from the	East/West line	County
B	15	26-S	31-E	-	430'	NORTH	2403'	EAST	EDDY

¹¹Bottom Hole Location If Different From Surface

UL or lot no.	Section	Township	Range	Lot Idn	Feet from the	North/South line	Feet from the	East/West line	County
0	22	26-S	31-E	-	100'	SOUTH	2310'	EAST	EDDY

¹² Dedicated Acres 320	¹³ Joint or Infill	¹⁴ Consolidation Code	¹⁵ Order No.
--------------------------------------	-------------------------------	----------------------------------	-------------------------

No allowable will be assigned to this completion until all interests have been consolidated or a non-standard unit has been approved by the division.

<p>FIRST PERFORATION POINT NEW MEXICO EAST NAD 1927 X=676273 Y=382284 LAT.: N 32.0497371 LONG.: W 103.7643986 NAD 1983 X=717459 Y=382341 LAT.: N 32.0498621 LONG.: W 103.7648730</p>	<p>SURFACE LOCATION NEW MEXICO EAST NAD 1927 X=676180 Y=381953 LAT.: N 32.0488294 LONG.: W 103.7647039 NAD 1983 X=717366 Y=382011 LAT.: N 32.0489544 LONG.: W 103.7651783</p>	<p>17 OPERATOR CERTIFICATION I hereby certify that the information contained herein is true and complete to the best of my knowledge and belief, and that this organization either owns a working interest or undivided mineral interest in the land including the proposed bottom hole location or has a right to drill this well at this location pursuant to a contract with an owner of such a mineral or working interest, or to a voluntary pooling agreement or a compulsory pooling order heretofore entered by the division.</p> <p>Signature: <i>Lara Thompson</i> Date: 4/29/19 Printed Name: Lara Thompson E-mail Address: lara.thompson@swcc.com</p>
<p>LAST PERFORATION POINT/ BOTTOM HOLE LOCATION NEW MEXICO EAST NAD 1927 X=676339 Y=371821 LAT.: N 32.0208735 LONG.: W 103.7643642 NAD 1983 X=717525 Y=371878 LAT.: N 32.0210987 LONG.: W 103.7648372</p>	<p>18 SURVEYOR CERTIFICATION I hereby certify that the well location shown on this plat was plotted from field notes of actual surveys made by me or under my supervision, and that the same is true to the best of my belief.</p> <p>Date of Survey: 02/18/2019 Signature and Seal of Professional Surveyor: <i>Michael Brown</i> Certificate Number: 18329</p>	

EXHIBIT

2

SURVEY\MATADOR_RESOURCES\BOROS_FEDERAL_103H_REV1.DWG 3/4/2019 9:12:15 AM Richardson

LWP 12-24-19

District I
1625 N. French Dr., Hobbs, NM 88240
Phone: (505) 393-6161 Fax: (505) 393-0720
District II
811 S. First St., Artesia, NM 88210
Phone: (505) 748-1283 Fax: (505) 748-9720
District III
1000 Rio Brazos Road, Aztec, NM 87410
Phone: (505) 334-6178 Fax: (505) 334-6170
District IV
1220 S. St. Francis Dr., Santa Fe, NM 87505
Phone: (505) 476-3460 Fax: (505) 476-3462

RECEIVED
State of New Mexico
Energy, Minerals & Natural Resources
Department
OIL CONSERVATION DIVISION
1220 South St. Francis Dr.
Santa Fe, NM 87505
DISTRICT/ARTESIA/O.C.D.

FORM C-102
Revised August 1, 2011
Submit one copy to appropriate
District Office

☐ AMENDED REPORT

WELL LOCATION AND ACREAGE DEDICATION PLAT

¹ API Number 30-015-46495	² Pool Code 97860	³ Pool Name Jennings Bone Spring West
⁴ Property Code 326329	⁵ Property Name BOROS FEDERAL	⁶ Well Number 123H
⁷ GRID No. 228937	⁸ Operator Name MATADOR PRODUCTION COMPANY	⁹ Elevation 3225'

¹⁰Surface Location

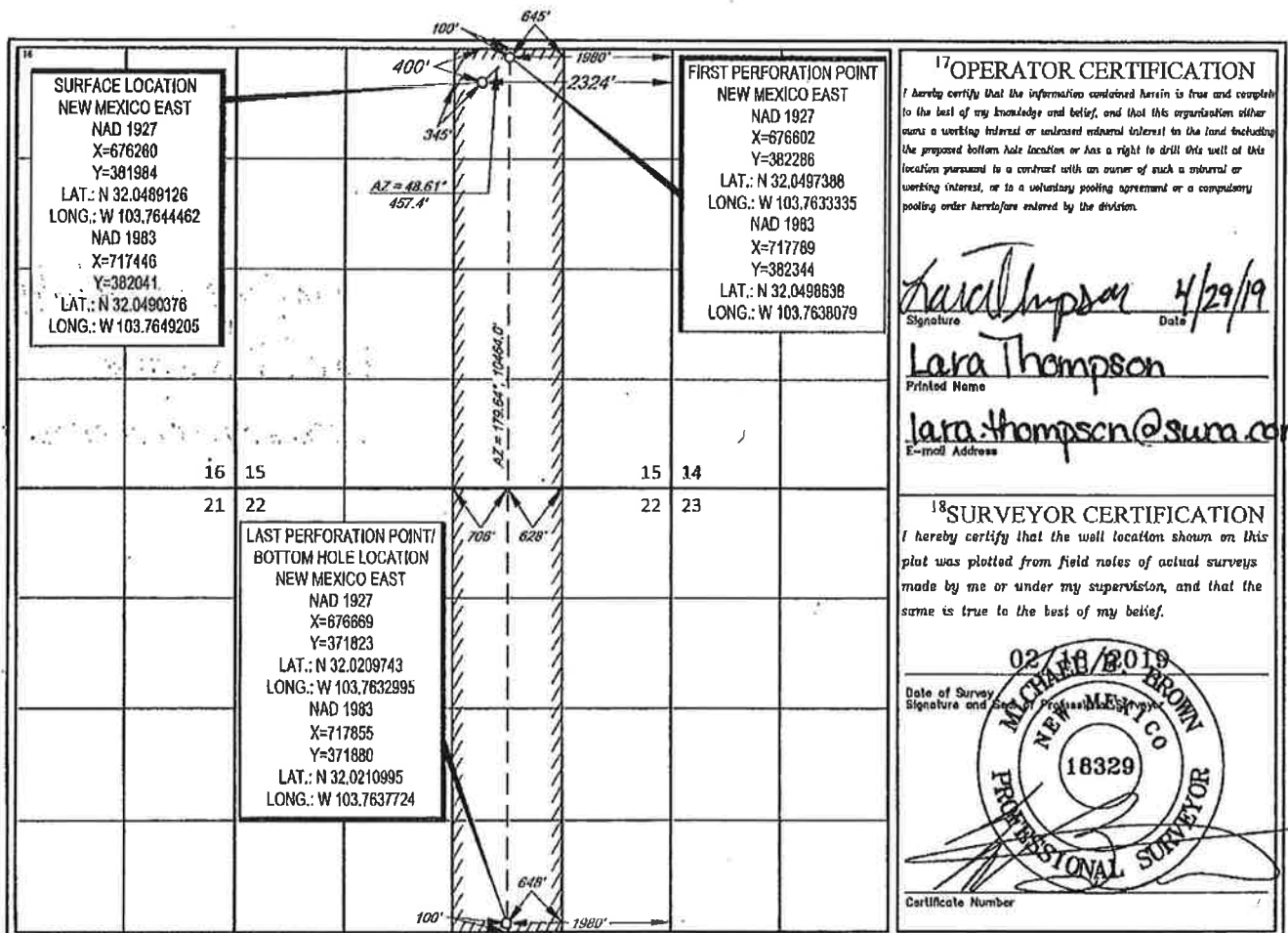
UL or lot no.	Section	Township	Range	Lot Idn	Feet from the	North/South line	Feet from the	East/West line	County
B	15	26-S	31-E	-	400'	NORTH	2324'	EAST	EDDY

¹¹Bottom Hole Location If Different From Surface

UL or lot no.	Section	Township	Range	Lot Idn	Feet from the	North/South line	Feet from the	East/West line	County
0	22	26-S	31-E	-	100'	SOUTH	1980'	EAST	EDDY

¹² Dedicated Acres	¹³ Joint or Infill	¹⁴ Consolidation Code	¹⁵ Order No.
320			

No allowable will be assigned to this completion until all interests have been consolidated or a non-standard unit has been approved by the division.



S:\SURVEY\MATADOR_RESOURCES\BOROS_15522-268-31\FINAL_PRODUCTS\LO_BOROS_FEDERAL_123H_REV4.DWG 3/4/2019 9:18:28 AM pichardson

RWP 12-18-19.

RECEIVED

RECEIVED

District I
1625 N. French Dr., Hobbs, NM 88240
Phone: (505) 393-6161 Fax: (505) 393-0720
District II
811 S. First St., Artesia, NM 88210
Phone: (505) 748-1283 Fax: (505) 748-9720
District III
1000 Rio Brazos Road, Aztec, NM 87410
Phone: (505) 334-6178 Fax: (505) 334-6170
District IV
1220 S. St. Francis Dr., Santa Fe, NM 87505
Phone: (505) 476-3460 Fax: (505) 476-3462

State of New Mexico
Energy, Minerals & Natural Resources
Department
OIL CONSERVATION DIVISION
1220 South St. Francis Dr.
Santa Fe, NM 87505

FORM C-102

Revised August 1, 2011

Submit one copy to appropriate

District Office

☐ AMENDED REPORT

WELL LOCATION AND ACREAGE DEDICATION PLAT

¹ API Number 30-015-46571	² Pool Code 97860	³ Pool Name Jennings, Bone Spring West
⁴ Property Code 326329	⁵ Property Name BOROS FEDERAL	⁶ Well Number 133H
⁷ GRID No. 228937	⁸ Operator Name MATADOR PRODUCTION COMPANY	⁹ Elevation 3224'

¹⁰Surface Location

UL or lot no.	Section	Township	Range	Lot Idn	Feet from the	North/South line	Feet from the	East/West line	County
B	15	26-S	31-E	-	430'	NORTH	2213'	EAST	EDDY

¹¹Bottom Hole Location If Different From Surface

UL or lot no.	Section	Township	Range	Lot Idn	Feet from the	North/South line	Feet from the	East/West line	County
O	22	26-S	31-E	-	100'	SOUTH	1980'	EAST	EDDY

¹² Dedicated Acres 320	¹³ Joint or Infill	¹⁴ Consolidation Code	¹⁵ Order No.
--------------------------------------	-------------------------------	----------------------------------	-------------------------

No allowable will be assigned to this completion until all interests have been consolidated or a non-standard unit has been approved by the division.

<p>SURFACE LOCATION NEW MEXICO EAST NAD 1927 X=676370 Y=381955 LAT.: N 32.0488302 LONG.: W 103.7640908 NAD 1983 X=717556 Y=382012 LAT.: N 32.0489552 LONG.: W 103.7645852</p>	<p>FIRST PERFORATION POINT NEW MEXICO EAST NAD 1927 X=676602 Y=382286 LAT.: N 32.0497388 LONG.: W 103.7633335 NAD 1983 X=717789 Y=382344 LAT.: N 32.0498638 LONG.: W 103.7638079</p>	<p>17 OPERATOR CERTIFICATION I hereby certify that the information contained herein is true and complete to the best of my knowledge and belief, and that this organization either owns a working interest or undivided mineral interest in the land including the proposed bottom hole location or has a right to drill this well at this location pursuant to a contract with an owner of such a mineral or working interest, or to a voluntary pooling agreement or a compulsory pooling order heretofore entered by the division.</p> <p><i>Lara Thompson</i> 4/29/19 Signature Date Lara Thompson Printed Name lara.thompson@surco.com E-mail Address</p>
<p>LAST PERFORATION POINT/ BOTTOM HOLE LOCATION NEW MEXICO EAST NAD 1927 X=676669 Y=371823 LAT.: N 32.0209743 LONG.: W 103.7632995 NAD 1983 X=717855 Y=371880 LAT.: N 32.0210995 LONG.: W 103.7637724</p>	<p>18 SURVEYOR CERTIFICATION I hereby certify that the well location shown on this plat was plotted from field notes of actual surveys made by me or under my supervision, and that the same is true to the best of my belief.</p> <p>02/18/2019 Date of Survey Signature and Seal MICHAEL BROWN NEW MEXICO 18329 PROFESSIONAL SURVEYOR Certificate Number</p>	

B:\SURVEY\MATADOR_RESOURCE\BOROS_15522-265-21\FINAL_PRODUCT\BLO_BOROS_FEDERAL_133H_REV4.DWG 3/4/2019 9:16:32 AM jrichardson

RWP 1-8-2020

District I
1625 N. French Dr., Hobbs, NM 88240
Phone: (575) 393-6161 Fax: (575) 393-0720
District II
811 S. First St., Artesia, NM 88210
Phone: (575) 748-1283 Fax: (575) 748-9720
District III
1000 Rio Brazos Road, Aztec, NM 87410
Phone: (505) 334-6178 Fax: (505) 334-6170
District IV
1220 S. St. Francis Dr., Santa Fe, NM 87505
Phone: (505) 476-3460 Fax: (505) 476-3462

State of New Mexico
Energy, Minerals & Natural Resources
Department
OIL CONSERVATION DIVISION
1220 South St. Francis Dr.
Santa Fe, NM 87505

FORM C-102

Revised August 1, 2011

Submit one copy to appropriate

District Office

☐ AMENDED REPORT

WELL LOCATION AND ACREAGE DEDICATION PLAT

¹ API Number 30-015-46565	² Pool Code 98220	³ Pool Name Parple SA GR Wolfcamp
⁴ Property Code 326329	⁵ Property Name BOROS FEDERAL	⁶ Well Number 203H
⁷ OGRID No. 228937	⁸ Operator Name MATADOR PRODUCTION COMPANY	⁹ Elevation 3228'

¹⁰Surface Location

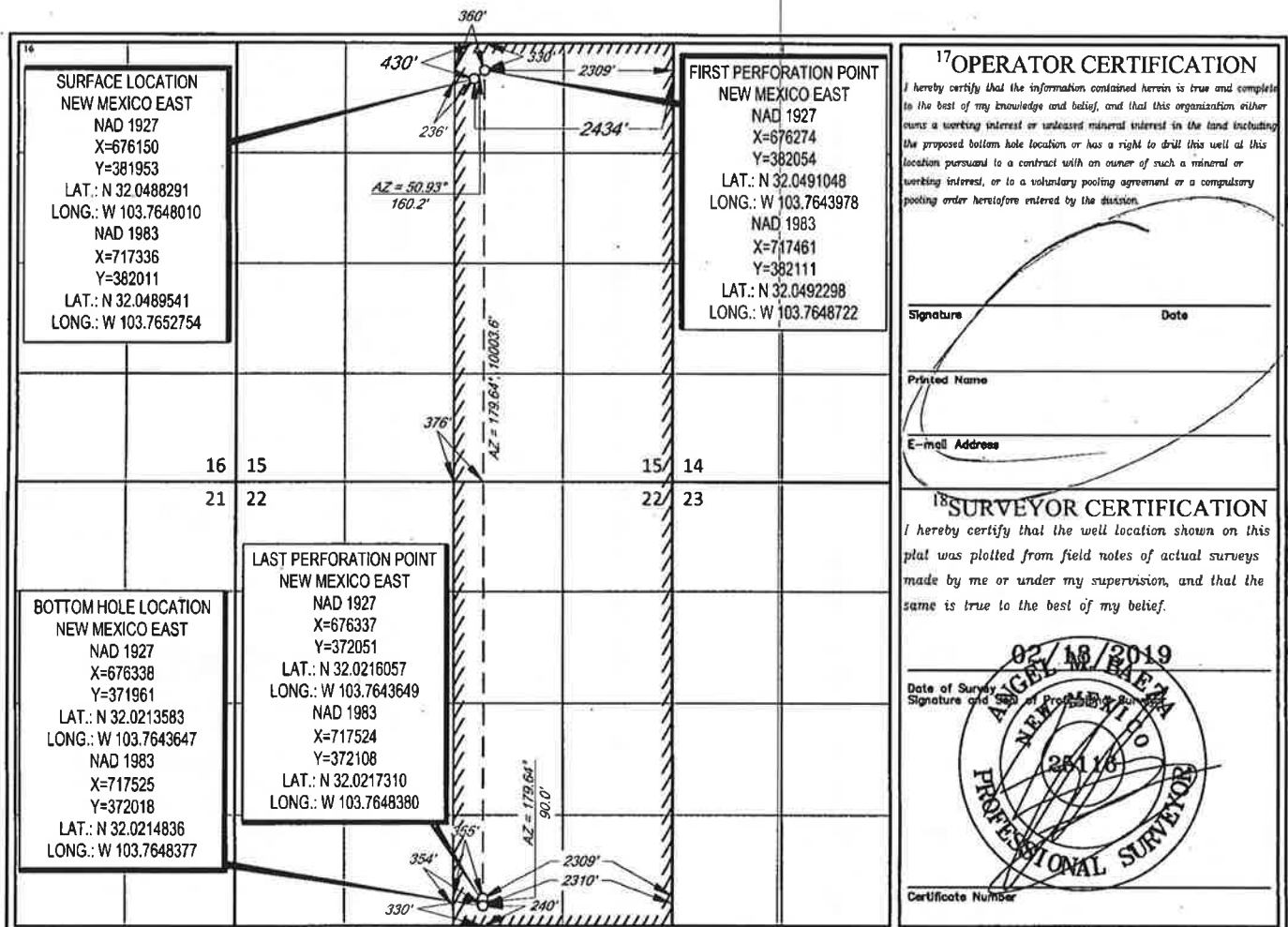
UL or lot no.	Section	Township	Range	Lot Idn	Feet from the	North/South line	Feet from the	East/West line	County
B	15	26-S	31-E	-	430'	NORTH	2434'	EAST	EDDY

¹¹Bottom Hole Location If Different From Surface

UL or lot no.	Section	Township	Range	Lot Idn	Feet from the	North/South line	Feet from the	East/West line	County
0	22	26-S	31-E	-	240'	SOUTH	2310'	EAST	EDDY

¹² Dedicated Acres 640	¹³ Joint or Infill	¹⁴ Consolidation Code	¹⁵ Order No. 2311
--------------------------------------	-------------------------------	----------------------------------	---------------------------------

No allowable will be assigned to this completion until all interests have been consolidated or a non-standard unit has been approved by the division.



S:\SURVEY\MATADOR_RESOURCE\BOROS_15&22-26S-31E\FINAL_PRODUCTS\ILO_BOROS_FEDERAL_203H_REV5.DWG 3/15/2019 3:34:25 PM jrichardson

RUP 1-6-2020

Need Signature

District I
1625 N. French Dr., Hobbs, NM 88240
Phone: (575) 393-6161 Fax: (575) 393-0720
District II
811 S. First St., Artesia, NM 88210
Phone: (575) 748-1283 Fax: (575) 748-9720
District III
1000 Rio Brazos Road, Aztec, NM 87410
Phone: (505) 334-6178 Fax: (505) 334-6170
District IV
1220 S. St. Francis Dr., Santa Fe, NM 87505
Phone: (505) 476-3460 Fax: (505) 476-3462

State of New Mexico
Energy, Minerals & Natural Resources
Department
OIL CONSERVATION DIVISION
1220 South St. Francis Dr.
Santa Fe, NM 87505

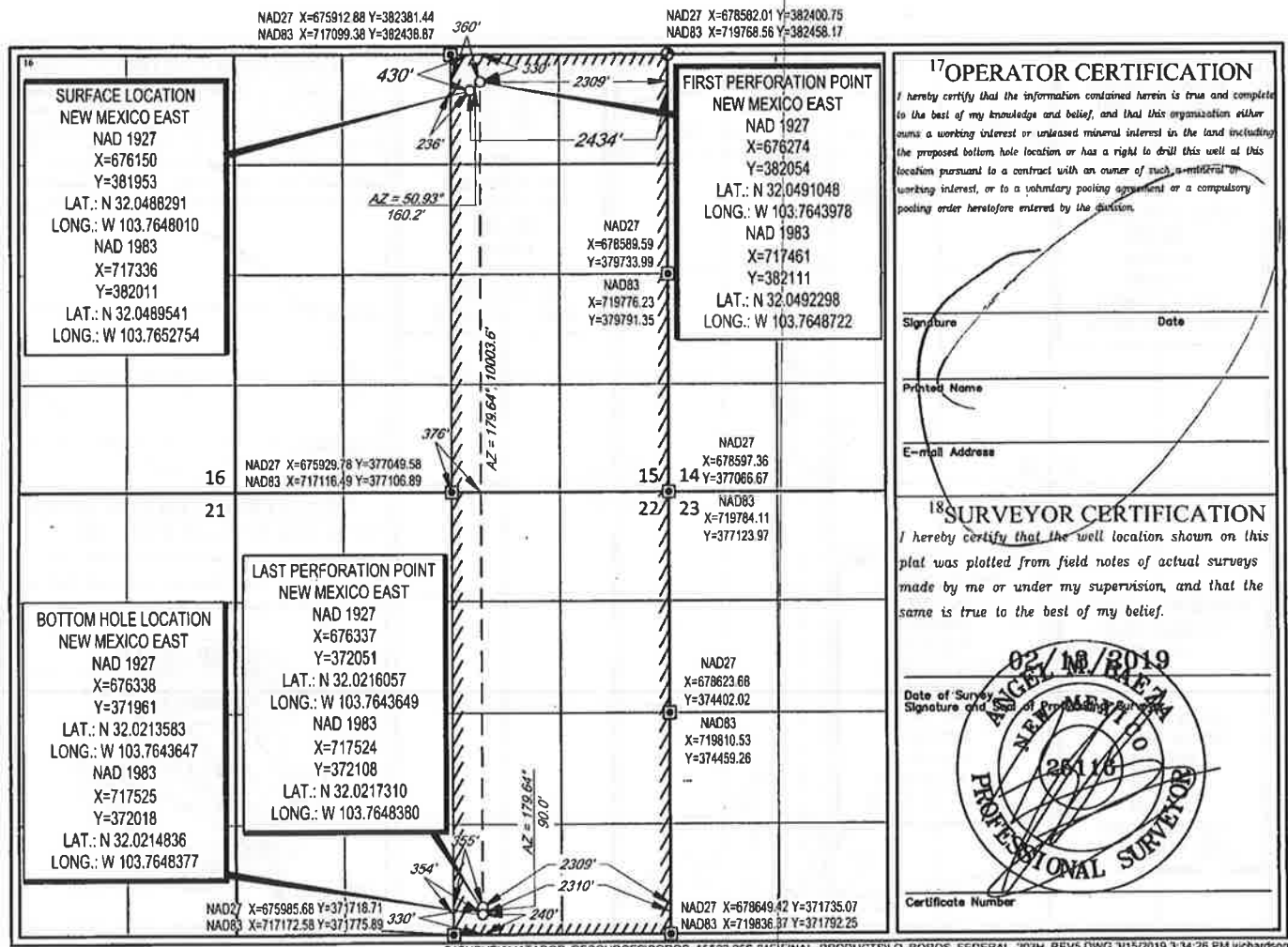
FORM C-102
Revised August 1, 2011
Submit one copy to appropriate
District Office

☐ AMENDED REPORT

WELL LOCATION AND ACREAGE DEDICATION PLAT

¹ API Number		² Pool Code		³ Pool Name	
⁴ Property Code		⁵ Property Name BOROS FEDERAL			⁶ Well Number 203H
⁷ GRID No.		⁸ Operator Name MATADOR PRODUCTION COMPANY			⁹ Elevation 3228'
¹⁰ Surface Location					
UL or lot no. B	Section 15	Township 26-S	Range 31-E	Lot Idn -	Feet from the 430'
				North/South line NORTH	Feet from the 2434'
				East/West line EAST	County EDDY
¹¹ Bottom Hole Location If Different From Surface					
UL or lot no. O	Section 22	Township 26-S	Range 31-E	Lot Idn -	Feet from the 240'
				North/South line SOUTH	Feet from the 2310'
				East/West line EAST	County EDDY
¹² Dedicated Acres 640		¹³ Joint or Infill		¹⁴ Consolidation Code	
				¹⁵ Order No.	

No allowable will be assigned to this completion until all interests have been consolidated or a non-standard unit has been approved by the division.



District I

1625 N. French Dr., Hobbs, NM 88240
Phone: (505) 393-6161 Fax: (505) 393-0720

District II

811 S. First St., Artesia, NM 88210
Phone: (505) 748-1283 Fax: (505) 748-9720

District III

1000 Rio Brazos Road, Aztec, NM 87410
Phone: (505) 334-6178 Fax: (505) 334-6170

District IV

1220 S. St. Francis Dr., Santa Fe, NM 87505
Phone: (505) 476-3460 Fax: (505) 476-3462State of New Mexico
Energy, Minerals & Natural Resources
Department
OIL CONSERVATION DIVISION
1220 South St. Francis Dr.
Santa Fe, NM 87505

FORM C-102.

Revised August 1, 2011

Submit one copy to appropriate

District Office

☐ AMENDED REPORT

WELL LOCATION AND ACREAGE DEDICATION PLAT

¹ API Number 30-015-46566	² Pool Code 98220	³ Pool Name Purple SAGE Wolfcamp, GAS
⁴ Property Code 326329	⁵ Property Name BOROS FEDERAL	⁶ Well Number 217H
⁷ GRID No. 028937	⁸ Operator Name MATADOR PRODUCTION COMPANY	⁹ Elevation 3226'

¹⁰Surface Location

UL or lot no.	Section	Township	Range	Lot Idn	Feet from the	North/South line	Feet from the	East/West line	County
B	15	26-S	31-E	-	400'	NORTH	2404'	EAST	EDDY

¹¹Bottom Hole Location If Different From Surface

UL or lot no.	Section	Township	Range	Lot Idn	Feet from the	North/South line	Feet from the	East/West line	County
0	22	26-S	31-E	-	240'	SOUTH	1650'	EAST	EDDY

¹² Dedicated Acres 640	¹³ Joint or Infill	¹⁴ Consolidation Code	¹⁵ Order No.
--------------------------------------	-------------------------------	----------------------------------	-------------------------

No allowable will be assigned to this completion until all interests have been consolidated or a non-standard unit has been approved by the division.

¹⁶ SURFACE LOCATION NEW MEXICO EAST NAD 1927 X=676180 Y=381983 LAT.: N 32.0489119 LONG.: W 103.7647042 NAD 1983 X=717366 Y=382041 LAT.: N 32.0490369 LONG.: W 103.7651786		FIRST PERFORATION POINT NEW MEXICO EAST NAD 1927 X=676934 Y=382059 LAT.: N 32.0491084 LONG.: W 103.7622678 NAD 1983 X=718121 Y=382116 LAT.: N 32.0492334 LONG.: W 103.7627421	¹⁷ OPERATOR CERTIFICATION I hereby certify that the information contained herein is true and complete to the best of my knowledge and belief, and that this organization either owns a working interest or unleased mineral interest in the land including the proposed bottom hole location or has a right to drill this well at this location pursuant to a contract with an owner of such a mineral or working interest, or to a voluntary pooling agreement or a compulsory pooling order heretofore entered by the division. Signature: <i>Lara Thompson</i> Date: 4/29/19 Printed Name: <i>Lara Thompson</i> E-mail Address: <i>lara.thompson@sua.com</i>
BOTTOM HOLE LOCATION NEW MEXICO EAST NAD 1927 X=676998 Y=371965 LAT.: N 32.0213599 LONG.: W 103.7622352 NAD 1983 X=718185 Y=372022 LAT.: N 32.0214851 LONG.: W 103.7627081	LAST PERFORATION POINT NEW MEXICO EAST NAD 1927 X=676997 Y=372055 LAT.: N 32.0216073 LONG.: W 103.7622355 NAD 1983 X=718184 Y=372112 LAT.: N 32.0217325 LONG.: W 103.7627084	¹⁸ SURVEYOR CERTIFICATION I hereby certify that the well location shown on this plat was plotted from field notes of actual surveys made by me or under my supervision, and that the same is true to the best of my belief. Date of Survey: 02/18/2019 Signature and Seal of Professional Surveyor: <i>[Signature]</i> Certificate Number: 25116	

S:\SURVEY\MATADOR_RESOURCES\BOROS_15422-265-31E\FINAL_PRODUCTS\ILO_BOROS_FEDERAL_217H_REV5.DWG 3/15/2019 3:38:52 PM jrichardson

RUP 1-6-20220

District I
1625 N. French Dr., Hobbs, NM 88240
Phone: (575) 393-6161 Fax: (575) 393-9720
District II
811 S. First St., Artesia, NM 88210
Phone: (575) 748-1283 Fax: (575) 748-9720
District III
1000 Rio Brazos Road, Aztec, NM 87410
Phone: (505) 334-6178 Fax: (505) 334-6170
District IV
1220 S. St. Francis Dr., Santa Fe, NM 87505
Phone: (505) 476-3460 Fax: (505) 476-3462

State of New Mexico
Energy, Minerals & Natural Resources
Department
OIL CONSERVATION DIVISION
1220 South St. Francis Dr.
Santa Fe, NM 87505

FORM C-102

Revised August 1, 2011

Submit one copy to appropriate

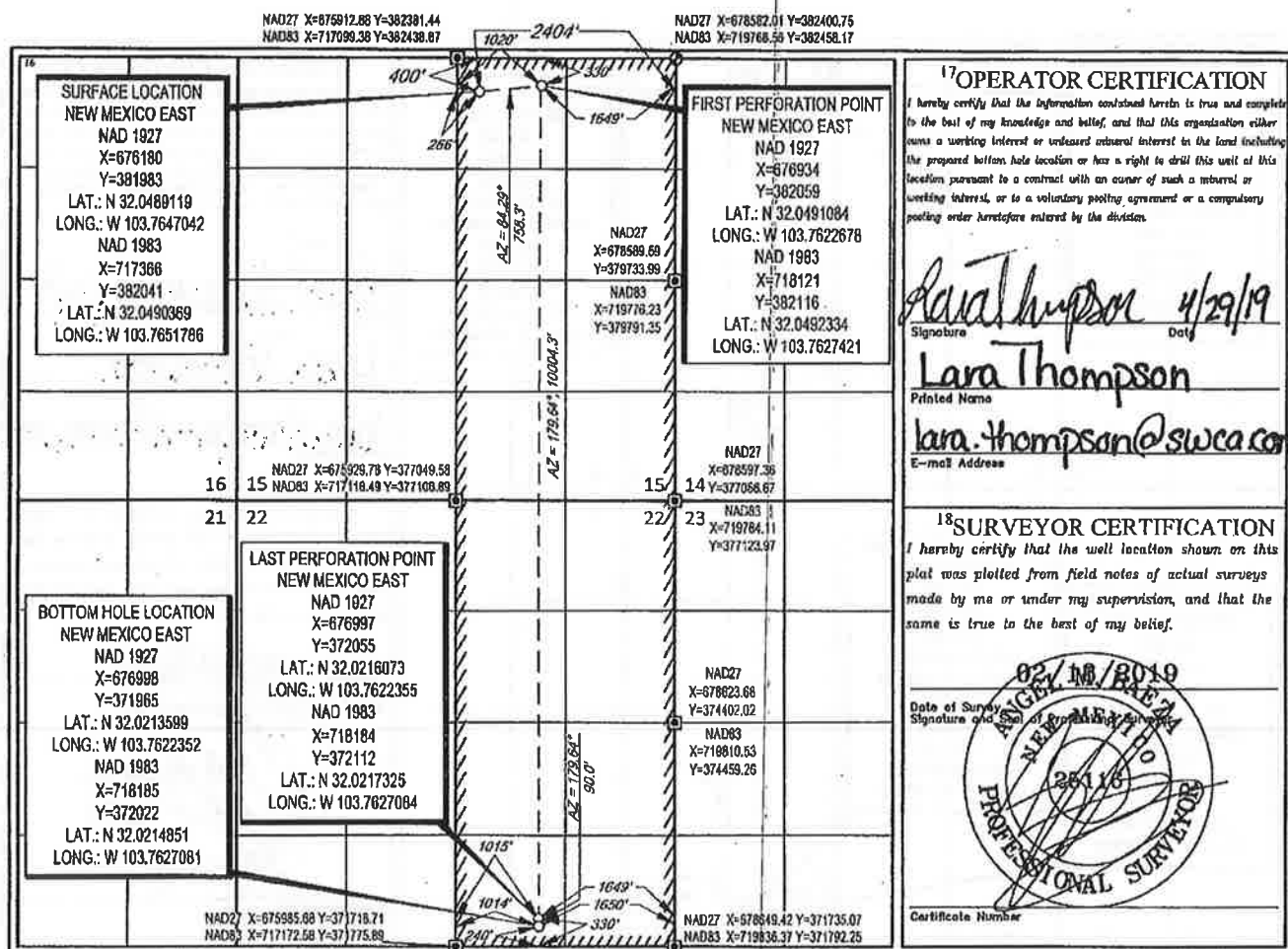
District Office

☐ AMENDED REPORT

WELL LOCATION AND ACREAGE DEDICATION PLAT

1 API Number		2 Pool Code		3 Pool Name	
4 Property Code		5 Property Name BOROS FEDERAL		6 Well Number 217H	
7 OGRID No.		8 Operator Name MATADOR PRODUCTION COMPANY		9 Elevation 3226'	
10 Surface Location					
UL or lot no. B	Section 15	Township 26-S	Range 31-E	Lot Idn -	Feet from the 400'
				North/South line NORTH	Feet from the 2404'
				East/West line EAST	County EDDY
11 Bottom Hole Location If Different From Surface					
UL or lot no. 0	Section 22	Township 26-S	Range 31-E	Lot Idn -	Feet from the 240'
				North/South line SOUTH	Feet from the 1650'
				East/West line EAST	County EDDY
12 Dedicated Acres 640		13 Joint or Infill		14 Consolidation Code	
				15 Order No.	

No allowable will be assigned to this completion until all interests have been consolidated or a non-standard unit has been approved by the division.



S:\SURVEY\MATADOR_RESOURCES\BOROS_15422-265-31E\FINAL_PRODUCT\SLD_BOROS_FEDERAL_217H_REV5.DWG 3/15/2019 3:38:53 PM jthompson

District I
1625 N. French Dr., Hobbs, NM 88240
Phone: (575) 393-6161 Fax: (575) 393-0720
District II
811 S. First St., Artesia, NM 88210
Phone: (505) 748-1283 Fax: (575) 748-9720
District III
1000 Rio Brazos Road, Aztec, NM 87410
Phone: (505) 334-6178 Fax: (505) 334-6170
District IV
1220 S. St. Francis Dr., Santa Fe, NM 87505
Phone: (505) 476-3460 Fax: (505) 476-3462

RECEIVED State of New Mexico
Energy, Minerals & Natural Resources
Department
OIL CONSERVATION DIVISION
1220 South St. Francis Dr.
Santa Fe, NM 87505
DISTRICT IV-ARTESIA O.C.D.

FORM C-102

Revised August 1, 2011

Submit one copy to appropriate

District Office

☐ AMENDED REPORT

WELL LOCATION AND ACREAGE DEDICATION PLAT

¹ API Number 30-015-46494	² Pool Code 98220	³ Pool Name PURPLE SAGE WOLF CAMP GAS
⁴ Property Code 326329	⁵ Property Name BOROS FEDERAL	⁶ Well Number 223H
⁷ GRID No. 228937	⁸ Operator Name MATADOR PRODUCTION COMPANY	⁹ Elevation 3226'

¹⁰Surface Location

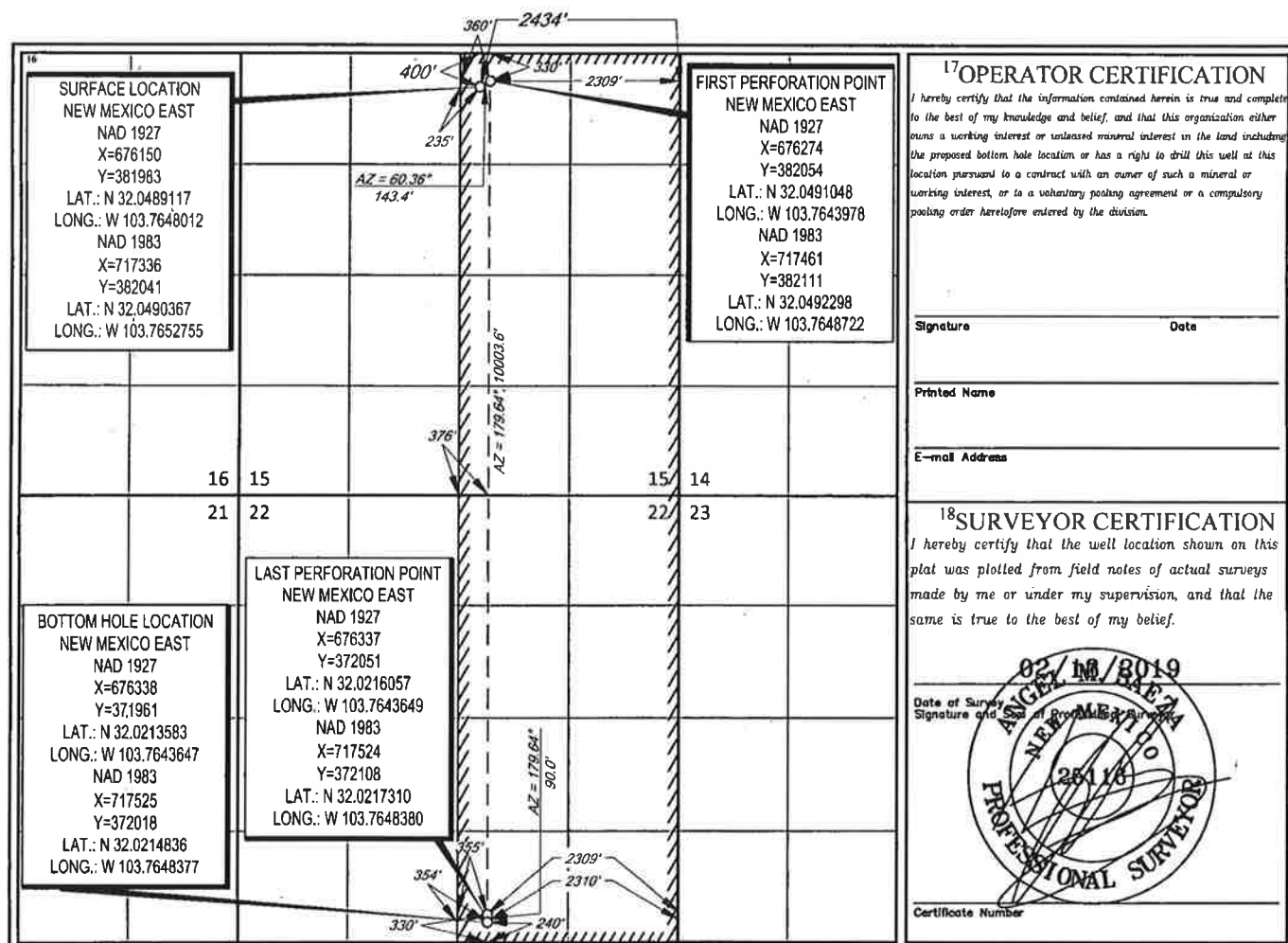
UL or lot no.	Section	Township	Range	Lot Idn	Feet from the	North/South line	Feet from the	East/West line	County
B	15	26-S	31-E	-	400'	NORTH	2434'	EAST	EDDY

¹¹Bottom Hole Location If Different From Surface

UL or lot no.	Section	Township	Range	Lot Idn	Feet from the	North/South line	Feet from the	East/West line	County
0	22	26-S	31-E	-	240'	SOUTH	2310'	EAST	EDDY

¹² Dedicated Acres 640	¹³ Joint or Infill	¹⁴ Consolidation Code	¹⁵ Order No.
---	-------------------------------	----------------------------------	-------------------------

No allowable will be assigned to this completion until all interests have been consolidated or a non-standard unit has been approved by the division.



S:\SURVEY\MATADOR_RESOURCES\BOROS_15422-26S-31E\FINAL_PRODUCT\SLO_BOROS_FEDERAL_223H_REV5.DWG 3/15/2019 3:40:33 PM richardson

RwP 12-18-19

District I
1625 N. French Dr., Hobbs, NM 88240
Phone: (575) 393-6161 Fax: (575) 393-0720
District II
811 S. First St., Artesia, NM 88210
Phone: (575) 748-1283 Fax: (575) 748-9720
District III
1000 Rio Urazos Road, Aztec, NM 87410
Phone: (505) 334-6178 Fax: (505) 334-6170
District IV
1220 S. St. Francis Dr., Santa Fe, NM 87505
Phone: (505) 476-3460 Fax: (505) 476-3462

State of New Mexico
Energy, Minerals & Natural Resources
Department
OIL CONSERVATION DIVISION
1220 South St. Francis Dr.
Santa Fe, NM 87505

FORM C-102
Revised August 1, 2011
Submit one copy to appropriate
District Office

☐ AMENDED REPORT

WELL LOCATION AND ACREAGE DEDICATION PLAT

¹ API Number 30-015-46511	² Pool Code 97860	³ Pool Name Jennings Bone Springs West
⁴ Property Code 326329	⁵ Property Name BOROS FEDERAL	
⁶ OGRID No. 228937	⁷ Operator Name MATADOR PRODUCTION COMPANY	
		⁸ Well Number 104H
		⁹ Elevation 3215'

¹⁰Surface Location

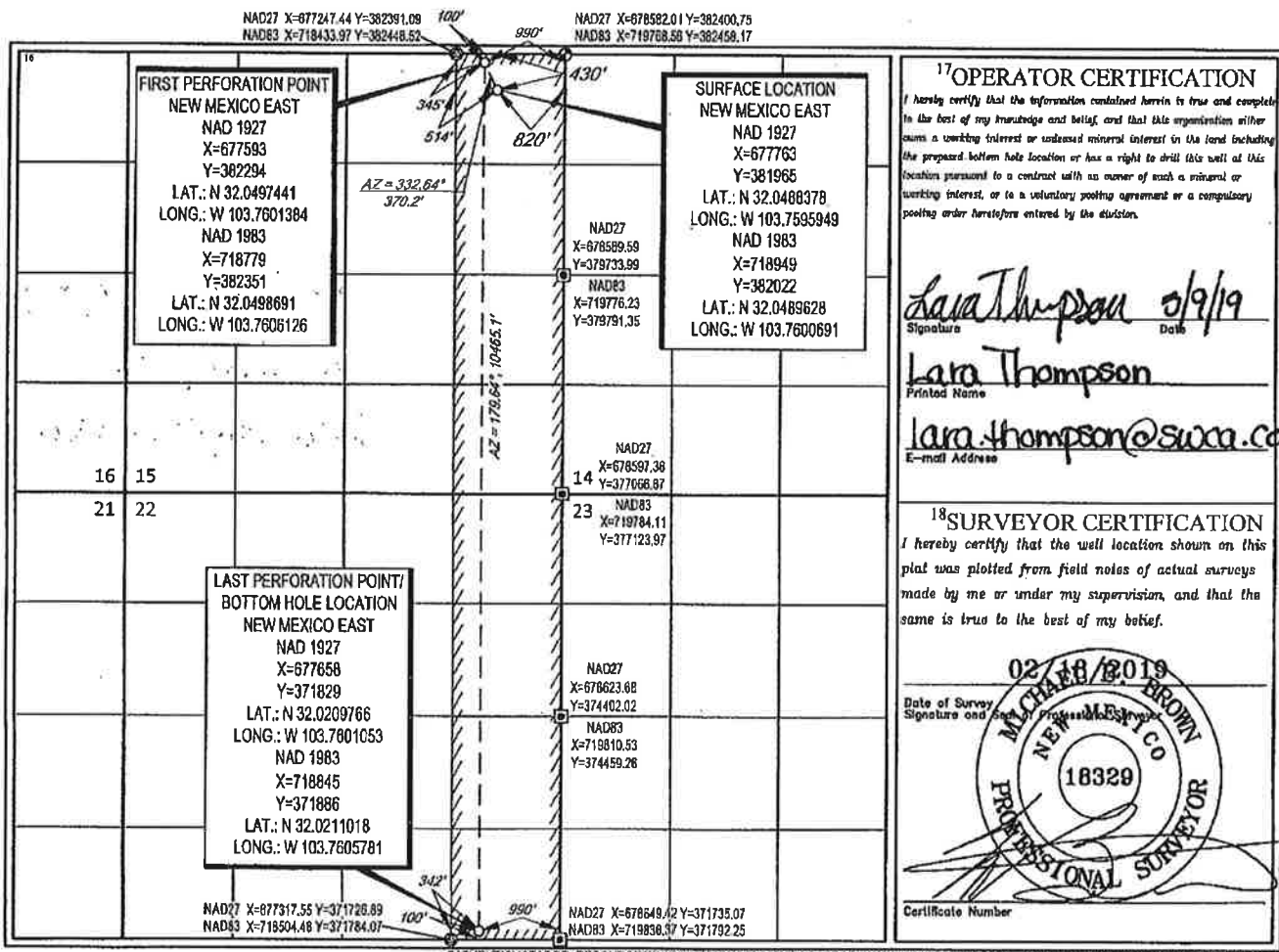
UL or lot no.	Section	Township	Range	Lot Idn	Feet from the	North/South line	Feet from the	East/West line	County
A	15	26-S	31-E	-	430'	NORTH	820'	EAST	EDDY

¹¹Bottom Hole Location If Different From Surface

UL or lot no.	Section	Township	Range	Lot Idn	Feet from the	North/South line	Feet from the	East/West line	County
P	22	26-S	31-E	-	100'	SOUTH	990'	EAST	EDDY

¹² Dedicated Acres 320	¹³ Joint or Infill	¹⁴ Consolidation Code	¹⁵ Order No.
---	-------------------------------	----------------------------------	-------------------------

No allowable will be assigned to this completion until all interests have been consolidated or a non-standard unit has been approved by the division.



RUP 1220-19

District I
1625 N. French Dr., Hobbs, NM 88240
Phone: (575) 393-6161 Fax: (575) 393-0720
District II
811 S. First St., Artesia, NM 88210
Phone: (575) 748-1283 Fax: (575) 748-9720
District III
1609 Rio Brazos Road, Aztec, NM 87410
Phone: (505) 334-6178 Fax: (505) 334-6170
District IV
1220 S. St. Francis Dr., Santa Fe, NM 87505
Phone: (505) 476-3460 Fax: (505) 476-3461

RECEIVED

State of New Mexico
Energy, Minerals & Natural Resources
Department

DEC 05 2018

DISTRICT/ARTESIA/O.C.D.

OIL CONSERVATION DIVISION

1220 South St. Francis Dr.
Santa Fe, NM 87505

FORM C-102

Revised August 1, 2011

Submit one copy to appropriate

District Office

☐ AMENDED REPORT

WELL LOCATION AND ACREAGE DEDICATION PLAT

¹ API Number 30-015-46479		² Pool Code 97860		³ Pool Name Jennings Bone Spring West	
⁴ Property Code 326 329		⁵ Property Name BOROS FEDERAL			⁶ Well Number 124H
⁷ GRID No. 228937		⁸ Operator Name MATADOR PRODUCTION COMPANY			⁹ Elevation 3217'

¹⁰Surface Location

UL or lot no.	Section	Township	Range	Lot Idn	Feet from the	North/South line	Feet from the	East/West line	County
A	15	26-S	31-E	-	400'	NORTH	741'	EAST	EDDY

¹¹Bottom Hole Location If Different From Surface

UL or lot no.	Section	Township	Range	Lot Idn	Feet from the	North/South line	Feet from the	East/West line	County
P	22	26-S	31-E	-	100'	SOUTH	660'	EAST	EDDY

¹² Dedicated Acres 320	¹³ Joint or Infill	¹⁴ Consolidation Code	¹⁵ Order No.
---	-------------------------------	----------------------------------	-------------------------

No allowable will be assigned to this completion until all interests have been consolidated or a non-standard unit has been approved by the division.

¹⁶ FIRST PERFORATION POINT NEW MEXICO EAST NAD 1927 X=677923 Y=382286 LAT.: N 32.0497459 LONG.: W 103.7590734 NAD 1983 X=719109 Y=382353 LAT.: N 32.0498709 LONG.: W 103.7595476		¹⁷ SURFACE LOCATION NEW MEXICO EAST NAD 1927 X=677843 Y=381995 LAT.: N 32.0489207 LONG.: W 103.7593368 NAD 1983 X=719029 Y=382053 LAT.: N 32.0490457 LONG.: W 103.7598110	
¹⁸ LAST PERFORATION POINT/ BOTTOM HOLE LOCATION NEW MEXICO EAST NAD 1927 X=677988 Y=371831 LAT.: N 32.0209773 LONG.: W 103.7590406 NAD 1983 X=719175 Y=371888 LAT.: N 32.0211026 LONG.: W 103.7595133		¹⁹ OPERATOR CERTIFICATION I hereby certify that the information contained herein is true and complete to the best of my knowledge and belief, and that this organization either owns a working interest or leased mineral interest in the land including the proposed bottom hole location or has a right to drill this well of this location pursuant to a contract with an owner of such a mineral or working interest, or to a voluntary pooling agreement or a compulsory pooling order heretofore entered by the division. Signature: <i>Lara Thompson</i> Date: <i>5/9/19</i> Printed Name: <i>Lara Thompson</i> E-mail Address: <i>lara.thompson@suxa.com</i>	
²⁰ SURVEYOR CERTIFICATION I hereby certify that the well location shown on this plat was plotted from field notes of actual surveys made by me or under my supervision, and that the same is true to the best of my belief. Date of Survey: <i>02/18/2019</i> Signature and Seal of Professional Surveyor: <i>Michael Brown</i> Certificate Number: <i>18329</i>			

S:\SURVEY\MATADOR_RESOURCES\BOROS_13&22-26S-31E\FINAL_PRODUCT\SILO_BOROS_FEDERAL_124H_REV4.DWG 3/4/2019 3:38:03 PM jrichardson

RW12-10-19

District I
1625 N. French Dr., Hobbs, NM 88240
Phone: (505) 393-6161 Fax: (505) 393-0720
District II
811 S. First St., Artesia, NM 88210
Phone: (505) 748-1283 Fax: (505) 748-9720
District III
1000 Rio Brazos Road, Aztec, NM 87410
Phone: (505) 334-6178 Fax: (505) 334-6170
District IV
1220 S. St. Francis Dr., Santa Fe, NM 87505
Phone: (505) 476-3460 Fax: (505) 476-3462

State of New Mexico
Energy, Minerals & Natural Resources
Department
OIL CONSERVATION DIVISION
1220 South St. Francis
Santa Fe, NM 87505

RECEIVED

DEC 09 2019

FORM C-102

Revised August 1, 2011

Submit one copy to appropriate

District Office

DISTRICT I-ARTESIA O.C.D.

☐ AMENDED REPORT

WELL LOCATION AND ACREAGE DEDICATION PLAT

¹ API Number 30-015-46513		² Pool Code		³ Pool Name Bone Spring	
⁴ Property Code 326329		⁵ Property Name BOROS FEDERAL			⁶ Well Number 134H
⁷ GRID No. 228937		⁸ Operator Name MATADOR PRODUCTION COMPANY			⁹ Elevation 3219'
¹⁰ Surface Location					
UL or lot no. A	Section 15	Township 26-S	Range 31-E	Lot Idn -	Feet from the 430'
		North/South line NORTH		Feet from the 630'	East/West line EAST
				County EDDY	
¹¹ Bottom Hole Location If Different From Surface					
UL or lot no. P	Section 22	Township 26-S	Range 31-E	Lot Idn -	Feet from the 100'
		North/South line SOUTH		Feet from the 660'	East/West line EAST
				County EDDY	
¹² Dedicated Acres 320		¹³ Joint or Infill		¹⁴ Consolidation Code	¹⁵ Order No. 661

No allowable will be assigned to this completion until all interests have been consolidated or a non-standard unit has been approved by the division.

<p>FIRST PERFORATION POINT NEW MEXICO EAST NAD 1927 X=677923 Y=382296 LAT.: N 32.0497459 LONG.: W 103.7590734 NAD 1983 X=719109 Y=382353 LAT.: N 32.0498709 LONG.: W 103.7595476</p>		<p>SURFACE LOCATION NEW MEXICO EAST NAD 1927 X=677953 Y=381986 LAT.: N 32.0488390 LONG.: W 103.7589817 NAD 1983 X=719139 Y=382024 LAT.: N 32.0488640 LONG.: W 103.7594558</p>	
<p>LAST PERFORATION POINT/ BOTTOM HOLE LOCATION NEW MEXICO EAST NAD 1927 X=677988 Y=371831 LAT.: N 32.0209773 LONG.: W 103.7590406 NAD 1983 X=719175 Y=371888 LAT.: N 32.0211026 LONG.: W 103.7595133</p>		<p>17 OPERATOR CERTIFICATION I hereby certify that the information contained herein is true and complete to the best of my knowledge and belief, and that this organization either owns a working interest or undivided mineral interest in the land including the proposed bottom hole location or has a right to drill this well at this location pursuant to a contract with an owner of such a mineral or working interest, or to a voluntary pooling agreement or a compulsory pooling order heretofore entered by the division.</p> <p><i>Lara Thompson</i> 5/9/19 Signature Date Lara Thompson Printed Name lara.thompson@sura.com E-mail Address</p>	
<p>18 SURVEYOR CERTIFICATION I hereby certify that the well location shown on this plat was plotted from field notes of actual surveys made by me or under my supervision, and that the same is true to the best of my belief.</p> <p>02 MAY 18 2019 Date of Survey Signature and Seal of Professional Surveyor MICHAEL BROWN NEW MEXICO 18329 PROFESSIONAL SURVEYOR</p> <p>Certificate Number</p>			

S:\SURVEY\MATADOR_RESOURCES\BOROS_15822-265-31\FINAL_PRODUCT\SILO_BOROS_FEDERAL_134H_REV4.DWG 3/4/2019 3:38:28 PM jrichardson

Rw 12-20-19

RECEIVED

District I

1625 N. French Dr., Hobbs, NM 88240

Phone: (575) 393-6161 Fax: (575) 393-6162

District II

811 S. First St., Artesia, NM 88210

Phone: (575) 748-1283 Fax: (575) 748-9220

District III

1000 Rio Brazos Road, Abo, NM 87004

Phone: (505) 334-6173 Fax: (505) 334-6170

District IV

1220 S. St. Francis Dr., Santa Fe, NM 87505

Phone: (505) 476-3460 Fax: (505) 476-3462

State of New Mexico
Energy, Minerals & Natural Resources
Department
OIL CONSERVATION DIVISION
1220 South St. Francis Dr.
Santa Fe, NM 87505

FORM C-102

Revised August 1, 2011

Submit one copy to appropriate

District Office

☐ AMENDED REPORT

WELL LOCATION AND ACREAGE DEDICATION PLAT

¹ API Number 30-015-46480		² Pool Code 98220		³ Pool Name Purple Sage Wolfcamp	
⁴ Property Code 326329		⁵ Property Name BOROS FEDERAL			⁶ Well Number 204H
⁷ GRID No. 228937		⁸ Operator Name MATADOR PRODUCTION COMPANY			⁹ Elevation 3215'

¹⁰ Surface Location									
UL or lot no.	Section	Township	Range	Lot Idn	Feet from the	North/South line	Feet from the	East/West line	County
A	15	26-S	31-E	-	430'	NORTH	851'	EAST	EDDY

¹¹ Bottom Hole Location If Different From Surface									
UL or lot no.	Section	Township	Range	Lot Idn	Feet from the	North/South line	Feet from the	East/West line	County
P	22	26-S	31-E	-	240'	SOUTH	990'	EAST	EDDY

¹² Dedicated Acres 640	¹³ Joint or Infill	¹⁴ Consolidation Code	¹⁵ Order No. 991
---	-------------------------------	----------------------------------	---------------------------------------

No allowable will be assigned to this completion until all interests have been consolidated or a non-standard unit has been approved by the division.

¹⁶ FIRST PERFORATION POINT NEW MEXICO EAST NAD 1927 X=677594 Y=382064 LAT.: N 32.0491119 LONG.: W 103.7601377 NAD 1983 X=718781 Y=382121 LAT.: N 32.0492369 LONG.: W 103.7606119		¹⁷ SURFACE LOCATION NEW MEXICO EAST NAD 1927 X=677733 Y=381985 LAT.: N 32.0488376 LONG.: W 103.7596921 NAD 1983 X=718919 Y=382022 LAT.: N 32.0489826 LONG.: W 103.7601662	
¹⁸ BOTTOM HOLE LOCATION NEW MEXICO EAST NAD 1927 X=677658 Y=371989 LAT.: N 32.0213814 LONG.: W 103.7601057 NAD 1983 X=718845 Y=372026 LAT.: N 32.0214867 LONG.: W 103.7605786		¹⁹ LAST PERFORATION POINT NEW MEXICO EAST NAD 1927 X=677657 Y=372059 LAT.: N 32.0216088 LONG.: W 103.7601060 NAD 1983 X=718844 Y=372116 LAT.: N 32.0217341 LONG.: W 103.7605789	

¹⁷OPERATOR CERTIFICATION

I hereby certify that the information contained herein is true and complete to the best of my knowledge and belief, and that this organization either owns a working interest or undivided mineral interest in the land including the proposed bottom hole location or has a right to drill this well at this location pursuant to a contract with an owner of such a mineral or working interest, or to a voluntary pooling agreement or a compulsory pooling order heretofore entered by the division.

Lara Thompson 5/9/19
 Signature Date
 Lara Thompson
 Printed Name
 lara.thompson@swrc.com
 E-mail Address

¹⁸SURVEYOR CERTIFICATION

I hereby certify that the well location shown on this plat was plotted from field notes of actual surveys made by me or under my supervision, and that the same is true to the best of my belief.

02/18/2019
 Date of Survey
 Signature and Seal of Professional Surveyor
 28418
 Certificate Number

S:\SURVEY\MATADOR_RESOURCES\BOROS_15A27-26S-31E\FINAL_PRODUCT\SILO_BOROS_FEDERAL_204H_REV5.DWG 3/14/2019 1:27:37 PM jehardson

RwP 12-10-19

District I
1625 N. French Dr., Hobbs, NM 88240
Phone: (575) 393-6161 Fax: (575) 393-0720
District II
811 S. First St., Artesia, NM 88210
Phone: (575) 748-1283 Fax: (575) 748-9720
District III
1000 Rio Brazos Road, Aztec, NM 87410
Phone: (505) 334-6178 Fax: (505) 334-6170
District IV
1220 S. St. Francis Dr., Santa Fe, NM 87505
Phone: (505) 476-3460 Fax: (505) 476-3461

RECEIVED

State of New Mexico
Energy, Minerals & Natural Resources

RECEIVED

FORM C-102

Revised August 1, 2011

Submit one copy to appropriate

District Office

OIL CONSERVATION DIVISION

1220 South St. Francis Dr.

Santa Fe, NM 87505

DISTRICT I-ARTESIA O.C.D.

DISTRICT I-ARTESIA O.C.D.

☐ AMENDED REPORT

WELL LOCATION AND ACREAGE DEDICATION PLAT

¹ API Number 30-015-46493		² Pool Code 98220		³ Pool Name Purple SAGE Wolfcamp	
⁴ Property Code 326329		⁵ Property Name BOROS FEDERAL			⁶ Well Number 218H
⁷ OGRID No. 228937		⁸ Operator Name MATADOR PRODUCTION COMPANY			⁹ Elevation 3217'
¹⁰ Surface Location					
UL or lot no. A	Section 15	Township 26-S	Range 31-E	Lot Idn -	Feet from the 400'
		North/South line NORTH		Feet from the 821'	East/West line EAST
				County EDDY	
¹¹ Bottom Hole Location If Different From Surface					
UL or lot no. P	Section 22	Township 26-S	Range 31-E	Lot Idn -	Feet from the 240'
		North/South line SOUTH		Feet from the 348'	East/West line EAST
				County EDDY	
¹² Dedicated Acres 640		¹³ Joint or Infill		¹⁴ Consolidation Code	
				¹⁵ Order No.	

No allowable will be assigned to this completion until all interests have been consolidated or a non-standard unit has been approved by the division.

¹⁶ SURFACE LOCATION NEW MEXICO EAST NAD 1927 X=677763 Y=381985 LAT.: N 32.0489204 LONG.: W 103.7595850 NAD 1983 X=718949 Y=382052 LAT.: N 32.0490454 LONG.: W 103.7800691		¹⁷ FIRST PERFORATION POINT NEW MEXICO EAST NAD 1927 X=678236 Y=382068 LAT.: N 32.0491153 LONG.: W 103.7580668 NAD 1983 X=719422 Y=382128 LAT.: N 32.0492403 LONG.: W 103.7585410		¹⁷ OPERATOR CERTIFICATION I hereby certify that the information contained herein is true and complete to the best of my knowledge and belief, and that this organization either owns a working interest or unleased mineral interest in the land including the proposed bottom hole location or has a right to drill this well at this location pursuant to a contract with an owner of such a mineral or working interest, or to a voluntary pooling agreement or a compulsory pooling order heretofore entered by the division. Signature: <i>Lara Thompson</i> Date: <i>09/19</i> Printed Name: <i>Lara Thompson</i> E-mail Address: <i>lara.thompson@swca.com</i>	
¹⁸ BOTTOM HOLE LOCATION NEW MEXICO EAST NAD 1927 X=678300 Y=371973 LAT.: N 32.0213629 LONG.: W 103.7580344 NAD 1983 X=719487 Y=372030 LAT.: N 32.0214881 LONG.: W 103.7585072		¹⁸ LAST PERFORATION POINT NEW MEXICO EAST NAD 1927 X=678299 Y=372063 LAT.: N 32.0216103 LONG.: W 103.7580347 NAD 1983 X=719486 Y=372120 LAT.: N 32.0217355 LONG.: W 103.7585075		¹⁸ SURVEYOR CERTIFICATION I hereby certify that the well location shown on this plat was plotted from field notes of actual surveys made by me or under my supervision, and that the same is true to the best of my belief. Date of Survey: <i>02/18/2019</i> Signature and Seal of Professional Surveyor: <i>[Signature]</i> Certificate Number: <i>26118</i>	

S:\SURVEY\MATADOR_RESOURCES\BOROS_15822-269-31E\FINAL_PRODUCT\510_BOROS_FEDERAL_218H_REV5.DWG 3/14/2019 1:32:54 PM jrichardson

RWP 12-17-19

District I
1625 N. French Dr., Hobbs, NM 88240
Phone: (575) 393-6161 Fax: (575) 393-0720
District II
811 S. First St., Artesia, NM 88210
Phone: (575) 748-1283 Fax: (575) 748-9720
District III
1000 Rio Brazos Road, Aztec, NM 87410
Phone: (505) 334-6178 Fax: (505) 334-6170
District IV
1220 S. St. Francis Dr., Santa Fe, NM 87505
Phone: (505) 476-3460 Fax: (505) 476-3461

RECEIVED
State of New Mexico
Energy, Minerals & Natural Resources
Department
DEC 05 2009
CONSERVATION DIVISION
1220 South St. Francis Dr.
Santa Fe, NM 87505

FORM C-102

Revised August 1, 2011

Submit one copy to appropriate

District Office

☐ AMENDED REPORT

WELL LOCATION AND ACREAGE DEDICATION PLAT

1 API Number		2 Pool Code		3 Pool Name	
4 Property Code		5 Property Name BOROS FEDERAL			6 Well Number 218H
7 OGRID No.		8 Operator Name MATADOR PRODUCTION COMPANY			9 Elevation 3217'

10 Surface Location

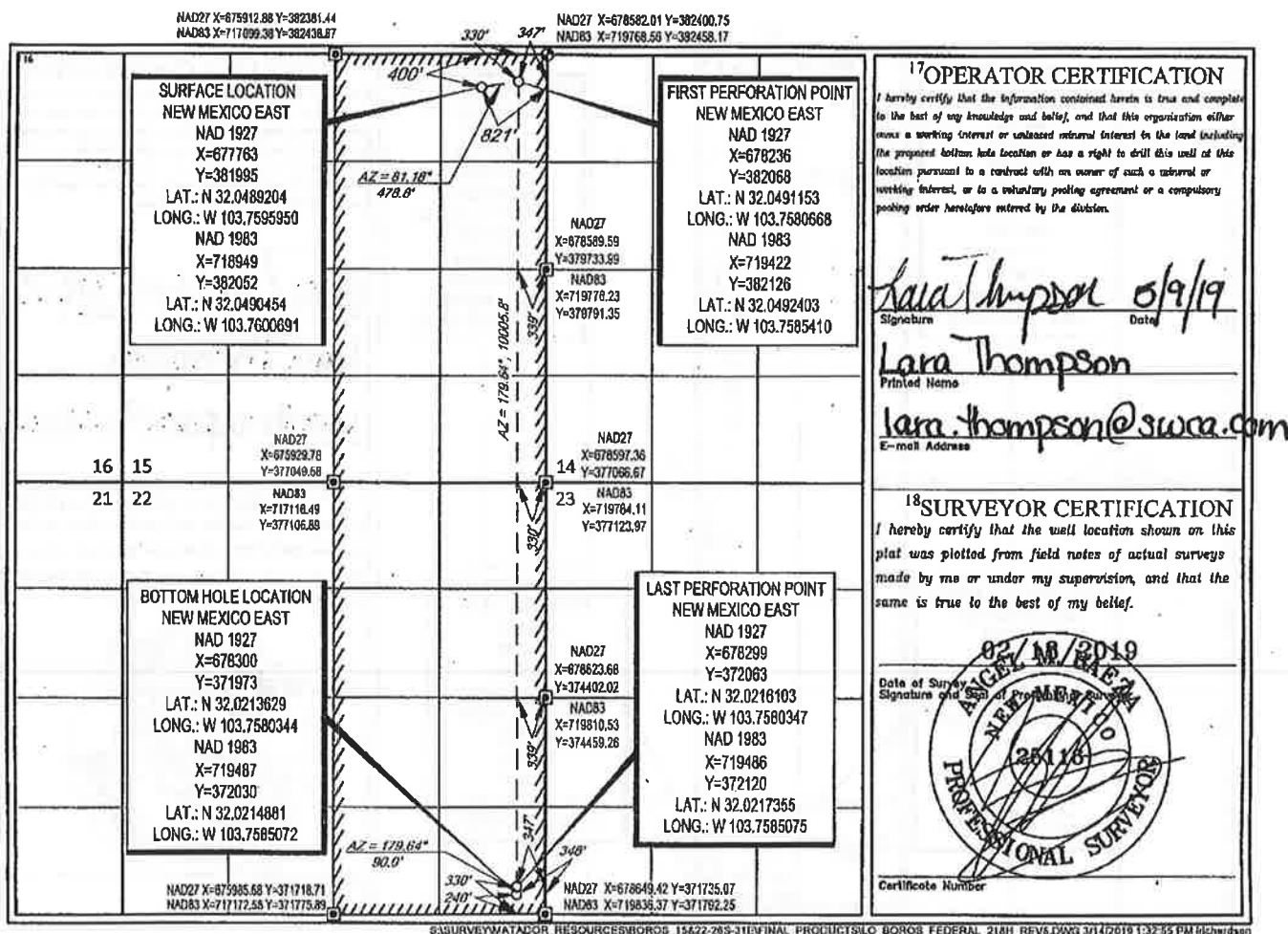
UL or lot no.	Section	Township	Range	Lot Ida	Feet from the	North/South line	Feet from the	East/West line	County
A	15	26-S	31-E	-	400'	NORTH	821'	EAST	EDDY

11 Bottom Hole Location If Different From Surface

UL or lot no.	Section	Township	Range	Lot Ida	Feet from the	North/South line	Feet from the	East/West line	County
P	22	26-S	31-E	-	240'	SOUTH	348'	EAST	EDDY

12 Dedicated Acres 640	13 Joint or Infill	14 Consolidation Code	15 Order No.
----------------------------------	--------------------	-----------------------	--------------

No allowable will be assigned to this completion until all interests have been consolidated or a non-standard unit has been approved by the division.



District I
1625 N. French Dr., Hobbs, NM 88240
Phone: (575) 393-6161 Fax: (575) 393-0720
District II
811 S. First St., Artesia, NM 88210
Phone: (575) 748-1283 Fax: (575) 748-9720
District III
1000 Rio Brazos Road, Aztec, NM 87410
Phone: (505) 334-6178 Fax: (505) 334-6170
District IV
1220 S. St. Francis Dr., Santa Fe, NM 87505
Phone: (505) 476-3460 Fax: (505) 476-3462

State of New Mexico
Energy, Minerals & Natural Resources

Department
OIL CONSERVATION DIVISION

1220 South St. Francis Dr. DISTRICT IV-ARTESIA O.C.D.
Santa Fe, NM 87505

RECEIVED

NOV 12 2019

FORM C-102

Revised August 1, 2011

Submit one copy to appropriate

District Office

☐ AMENDED REPORT

WELL LOCATION AND ACREAGE DEDICATION PLAT

¹ API Number 30-015-4443	² Pool Code 98220	³ Pool Name Purple SAGE Wolfcamp.
⁴ Property Code 326329	⁵ Property Name BOROS FEDERAL	⁶ Well Number 224H
⁷ GRID No. 228937	⁸ Operator Name MATADOR PRODUCTION COMPANY	⁹ Elevation 3216'

¹⁰Surface Location

UL or lot no.	Section	Township	Range	Lot Idn	Feet from the	North/South line	Feet from the	East/West line	County
A	15	26-S	31-E	-	400'	NORTH	851'	EAST	EDDY

¹¹Bottom Hole Location If Different From Surface

UL or lot no.	Section	Township	Range	Lot Idn	Feet from the	North/South line	Feet from the	East/West line	County
P	22	26-S	31-E	-	240'	SOUTH	990'	EAST	EDDY

¹² Dedicated Acres 640	¹³ Joint or Infill	¹⁴ Consolidation Code	¹⁵ Order No.
---	-------------------------------	----------------------------------	-------------------------

No allowable will be assigned to this completion until all interests have been consolidated or a non-standard unit has been approved by the division.

¹⁶ FIRST PERFORATION POINT NEW MEXICO EAST NAD 1927 X=677694 Y=382064 LAT.: N 32.0491119 LONG.: W 103.7601377 NAD 1983 X=718781 Y=382121 LAT.: N 32.0492369 LONG.: W 103.7608119		¹⁷ SURFACE LOCATION NEW MEXICO EAST NAD 1927 X=677733 Y=381995 LAT.: N 32.0489203 LONG.: W 103.7598921 NAD 1983 X=718919 Y=382052 LAT.: N 32.0490453 LONG.: W 103.7601663		17 OPERATOR CERTIFICATION I hereby certify that the information contained herein is true and complete to the best of my knowledge and belief, and that this organization either owns a working interest or sustained mineral interest in the land including the proposed bottom hole location or has a right to drill this well at this location pursuant to a contract with an owner of such a mineral or working interest, or to a voluntary pooling agreement or a compulsory pooling order heretofore entered by the division. Signature: <i>Lara Thompson</i> Date: <i>5/9/19</i> Printed Name: <i>Lara Thompson</i> E-mail Address: <i>lara.thompson@swca.com</i>	
16 15 21 22		14 23		18 SURVEYOR CERTIFICATION I hereby certify that the well location shown on this plat was plotted from field notes of actual surveys made by me or under my supervision, and that the same is true to the best of my belief. Date of Survey: <i>02/18/2019</i> Signature and Seal of Professional Surveyor: <i>[Seal]</i> Certificate Number: <i>28416</i>	
BOTTOM HOLE LOCATION NEW MEXICO EAST NAD 1927 X=677658 Y=371969 LAT.: N 32.0213614 LONG.: W 103.7601057 NAD 1983 X=718845 Y=372026 LAT.: N 32.0214867 LONG.: W 103.7605786		LAST PERFORATION POINT NEW MEXICO EAST NAD 1927 X=677657 Y=372059 LAT.: N 32.0216088 LONG.: W 103.7601060 NAD 1983 X=718844 Y=372116 LAT.: N 32.0217341 LONG.: W 103.7605789			

District I
1625 N. French Drive, Hobbs, NM 88240
District II
811 S. First St., Artesia, NM 88210
District III
1000 Rio Brazos Road, Aztec, NM 87410
District IV
1220 S. St Francis Dr, Santa Fe, NM
87505

State of New Mexico
Energy, Minerals and Natural Resources Department

Form C-107-B
Revised August 1, 2011

OIL CONSERVATION DIVISION
1220 S. St Francis Drive
Santa Fe, New Mexico 87505

Submit the original
application to the Santa Fe
office with one copy to the
appropriate District Office.

APPLICATION FOR SURFACE COMMINGLING (DIVERSE OWNERSHIP)

OPERATOR NAME: Matador Production Company
OPERATOR ADDRESS: 5400 LBJ Freeway Tower 1 Suite 1500 Dallas, TX 75240
APPLICATION TYPE:

☐ Pool Commingling ☐ Lease Commingling ☒ Pool and Lease Commingling ☐ Off-Lease Storage and Measurement (Only if not Surface Commingling)

LEASE TYPE: ☐ Fee ☐ State ☒ Federal

Is this an Amendment to existing Order? ☐ Yes ☒ No If "Yes", please include the appropriate Order No. _____
Have the Bureau of Land Management (BLM) and State Land office (SL.O) been notified in writing of the proposed commingling
☒ Yes ☐ No

(A) POOL COMMINGLING

Please attach sheets with the following information

(1) Pool Names and Codes	Gravities / BTU of Non-Commingled Production	Calculated Gravities / BTU of Commingled Production	Value of Non-Commingled Production	Calculated Value of Commingled Production	Volumes
Jennings; Bone Spring, West (97860)	46.9°	48.0° 1,218 BTU/scf	\$50.80/bbl	\$50.80/bbl \$2,597/mcf	8,600 bopd
Jennings; Bone Spring, West (97860)	1,186 BTU/scf		\$2.570/mcf		38,000 mcf
Purple Sage; Wolfcamp (Gas) (98220)	49.6°		\$50.80/bbl		6,800 bopd
Purple Sage; Wolfcamp (Gas) (98220)	1,254 BTU/scf		\$2.730/mcf		35,600 mcf

- (2) Are any wells producing at top allowables? ☐ Yes ☒ No
(3) Has all interest owners been notified by certified mail of the proposed commingling? ☒ Yes ☐ No.
(4) Measurement type: ☒ Metering ☐ Other (Specify) _____
(5) Will commingling decrease the value of production? ☐ Yes ☒ No If "yes", describe why commingling should be approved _____

(B) LEASE COMMINGLING

Please attach sheets with the following information

- (1) Pool Name and Code- _____
(2) Is all production from same source of supply? ☐ Yes ☐ No
(3) Has all interest owners been notified by certified mail of the proposed commingling? ☐ Yes ☐ No
(4) Measurement type: ☐ Metering ☐ Other (Specify) _____

(C) POOL and LEASE COMMINGLING

Please attach sheets with the following information

- (1) Complete Sections A and E.

(D) OFF-LEASE STORAGE and MEASUREMENT

Please attach sheets with the following information

- (1) Is all production from same source of supply? ☐ Yes ☐ No
(2) Include proof of notice to all interest owners.

(E) ADDITIONAL INFORMATION (for all application types)

Please attach sheets with the following information

- (1) A schematic diagram of facility, including legal location.
(2) A plat with lease boundaries showing all well and facility locations. Include lease numbers if Federal or State lands are involved.
(3) Lease Names, Lease and Well Numbers, and API Numbers.

I hereby certify that the information above is true and complete to the best of my knowledge and belief.

SIGNATURE: Brian Fancher TITLE: Regulatory Manager DATE: 2/21/2020

TYPE OR PRINT NAME Brian Fancher TELEPHONE NO.: (972) 371 5200

E-MAIL ADDRESS: bffancher@matadorresources.com

EXHIBIT

3

Matador Production Company

One Lincoln Centre • 5400 LBJ Freeway • Suite 1500 • Dallas, Texas 75240

Voice 972.587.4638 • Fax 972.371.5201

bfancher@matadorresources.com

Brian Fancher
Regulatory Manager

February 21, 2020

New Mexico Oil Conservation Division
1220 South St. Francis Drive
Santa Fe, NM 87505

Re: Application of Matador Production Company for administrative approval to surface commingle (Pool and lease commingle) production from the spacing units comprising the E2 of Sections 15 and 22, Township 26 South, Range 31 East, NMPM, Eddy County, New Mexico (the "Lands")

To Whom This May Concern,

Matador Production Company ("Matador"), OGRID: 228937, requests to commingle oil and gas production from twelve distinct wells located on the Lands, and future production from the Lands as described herein. All wells will be metered through individual three-phase separators with an oil turbine meter and gas orifice meter. The gas commingling will occur after individual measurement at each well. Gas exiting each separator flows into one gathering line, the Longwood RB Pipeline, LLC line, as depicted on **Exhibit A** – the Process Flow Diagram (PFD). Each well on the Lands will have its own three-phase separator with an orifice meter manufactured and assembled in accordance with American Gas Association (AGA) specifications. All primary and secondary Electronic Flow Measurement (EFM) equipment is tested and calibrated by a reputable third-party measurement company in accordance with industry specifications.

The orifice meter is the preferred measurement device utilized by midstream and exploration and production companies in natural gas measurement. The gas samples are obtained at the time of the meter testing/calibration and the composition and heating value are determined by a laboratory in accordance with American Petroleum Institute (API) specifications to ensure accurate volume and energy (i.e., MMBTU) determinations. See **Exhibit B** attached hereto – example gas analysis from Fesco Laboratory.

The flow stream from each wellhead is demonstrated in the PFD. It shows that the water, oil, and gas exit the wellbore and flow into a wellhead three-phase separator which separates the oil, gas, and water. The oil is measured via turbine meter which is calibrated periodically in accordance with industry specifications by a third party measurement company for accuracy. The gas is measured on a volume and MMBTU basis by an orifice meter and supporting EFM equipment in accordance with American Petroleum Association (API) Chapter 21.1. The gas is then sent into a

gathering line where it is commingled with each of the other wells' metered gas, as shown on **Exhibit A**. The gathering line gas is then metered by another orifice meter at the tank battery check to show the total volume of gas leaving the Tank Battery. This meter is tested and calibrated in accordance with industry specifications and volume and energy are determined on an hourly, daily, and monthly basis. Once the gas exits this final tank battery sales check it travels directly into a third party sales connect meter. Longwood RB Pipeline, LLC has its own orifice meter that measures the gas for custody transfer. These meters are also calibrated periodically to ensure the measurement accuracy.

In conclusion, all the oil and gas produced on the Lands will be metered at each wellhead and allocated correctly using the same measurement equipment as the pipeline sales measurement specifications accepted by API as industry standard.

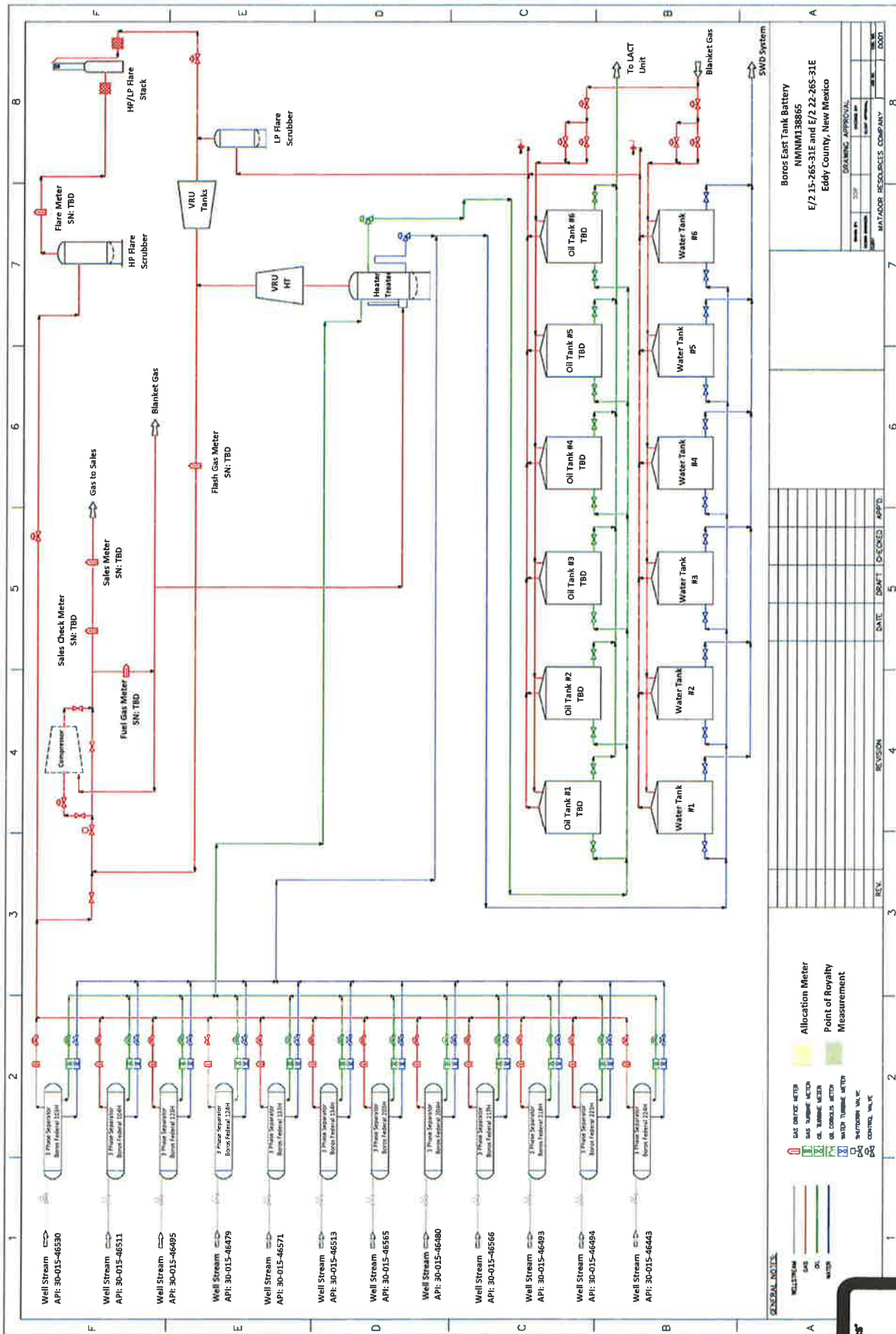
Very truly yours,

MATADOR PRODUCTION COMPANY

A handwritten signature in blue ink, appearing to read "Brian Fancher".

Brian Fancher
Regulatory Manager

BKF/oe
Enclosures



January 12, 2017

FESCO, Ltd.
1100 Fesco Ave. - Alice, Texas 78332

For: Matador Production Company
One Lincoln Centre
5400 LBJ Freeway, Suite 1500
Dallas, Texas 75240

Sample: Mallon 27 Federal Com No. 1H
First Stage Separator
Spot Gas Sample @ 350 psig & 108 °F

Date Sampled: 12/28/2016

Job Number: 63963.021

CHROMATOGRAPH EXTENDED ANALYSIS - GPA 2286

COMPONENT	MOL%	GPM
Hydrogen Sulfide*	< 0.001	
Nitrogen	4.392	
Carbon Dioxide	0.101	
Methane	69.412	
Ethane	15.072	4.024
Propane	7.407	2.037
Isobutane	0.621	0.203
n-Butane	1.671	0.526
2-2 Dimethylpropane	0.004	0.002
Isopentane	0.305	0.111
n-Pentane	0.324	0.117
Hexanes	0.253	0.104
Heptanes Plus	<u>0.438</u>	<u>0.178</u>
Totals	100.000	7.302

Computed Real Characteristics Of Heptanes Plus:

Specific Gravity ----- 3.374 (Air=1)
Molecular Weight ----- 97.32
Gross Heating Value ----- 5032 BTU/CF

Computed Real Characteristics Of Total Sample:

Specific Gravity ----- 0.785 (Air=1)
Compressibility (Z) ----- 0.9960
Molecular Weight ----- 22.64
Gross Heating Value
Dry Basis ----- 1289 BTU/CF
Saturated Basis ----- 1268 BTU/CF

*Hydrogen Sulfide tested on location b Stain Tube Method (GPA 2377)
0.031 Gr/100 CF, 0.5 PPMV or <0.0001 Mol%

Base Conditions: 14.650 PSI & 60 Deg F

Sampled By: (16) EJ/Ronnie
Analyst: MR
Processor: NG
Cylinder ID: T-4511

Certified: FESCO, Ltd. - Alice, Texas

David Dannhaus 361-661-7015



FESCO, Ltd.

Job Number: 63963.021

CHROMATOGRAPH EXTENDED ANALYSIS - GPA 2286

TOTAL REPORT

COMPONENT	MOL %	GPM	WT %
Hydrogen Sulfide*	< 0.001		< 0.001
Nitrogen	4.392		5.434
Carbon Dioxide	0.101		0.196
Methane	69.412		49.182
Ethane	15.072	4.024	20.016
Propane	7.407	2.037	14.426
Isobutane	0.621	0.203	1.594
n-Butane	1.671	0.526	4.290
2,2 Dimethylpropane	0.004	0.002	0.013
Isopentane	0.305	0.111	0.972
n-Pentane	0.324	0.117	1.032
2,2 Dimethylbutane	0.003	0.001	0.011
Cyclopentane	0.000	0.000	0.000
2,3 Dimethylbutane	0.036	0.015	0.137
2 Methylpentane	0.075	0.031	0.285
3 Methylpentane	0.045	0.018	0.171
n-Hexane	0.094	0.039	0.358
Methylcyclopentane	0.070	0.024	0.260
Benzene	0.030	0.008	0.104
Cyclohexane	0.055	0.019	0.204
2-Methylhexane	0.012	0.006	0.053
3-Methylhexane	0.015	0.007	0.066
2,2,4 Trimethylpentane	0.000	0.000	0.000
Other C7's	0.056	0.024	0.245
n-Heptane	0.032	0.015	0.142
Methylcyclohexane	0.050	0.020	0.217
Toluene	0.017	0.006	0.069
Other C8's	0.048	0.022	0.234
n-Octane	0.014	0.007	0.071
Ethylbenzene	0.002	0.001	0.009
M & P Xylenes	0.004	0.002	0.019
O-Xylene	0.001	0.000	0.005
Other C9's	0.019	0.010	0.106
n-Nonane	0.004	0.002	0.023
Other C10's	0.007	0.004	0.044
n-Decane	0.001	0.001	0.006
Undecanes (11)	<u>0.001</u>	<u>0.001</u>	<u>0.006</u>
Totals	100.000	7.302	100.000

Computed Real Characteristics Of Total Sample:

Specific Gravity -----	0.785	(Air=1)
Compressibility (Z) -----	0.9960	
Molecular Weight -----	22.64	
Gross Heating Value		
Dry Basis -----	1289	BTU/CF
Saturated Basis -----	1268	BTU/CF



Kaitlyn A. Luck
Phone (505) 954-7286
kaluck@hollandhart.com

February 21, 2020

CERTIFIED MAIL
RETURN RECEIPT REQUESTED

TO: Bureau of Land Management
301 Dinosaur Trail
Santa Fe, NM 87508

Re: Application of Matador Production Company to authorize pool and lease commingling, off-lease storage, off lease measurement, and off-lease marketing at the Boros Fed East Tank Battery located in the N/2 NE/4 (Units A & B) of Section 15, Township 26 South, Range 31 East, NMPM, Eddy County, New Mexico.

Ladies and Gentlemen:

Enclosed is a copy of the above-referenced application, which was filed with the New Mexico Oil Conservation Division on this date. Any objection to this application must be filed in writing within twenty days from this date at the Division's Santa Fe office located at 1220 South St. Francis Drive, Santa Fe, New Mexico, 87505. If no objection is received within this twenty-day period, this application may be approved administratively by the Division.

If you have any questions about this application, please contact the following:

Brian Fancher
Matador Production Company
972-371-5242
bfancher@matadorresources.com

Sincerely,

A handwritten signature in blue ink, appearing to read "Kaitlyn Luck".

Kaitlyn A. Luck
ATTORNEY FOR
MATADOR PRODUCTION COMPANY





Shipment Confirmation Acceptance Notice

A. Mailer Action

Note to Mailer: The labels and volume associated to this form online, **must** match the labeled packages being presented to the USPS® employee with this form.

MRC - Boros 103H well, et al.
CM# 83379.0001

Shipment Date: 02/21/2020

Shipped From:

Name: HOLLAND & HART LLP (1)

Address: 110 N GUADALUPE ST # 1

City: SANTA FE

State: NM ZIP+4® 87501

Type of Mail	Volume
Priority Mail Express®	
Priority Mail®	0
First-Class Package Service®	
Returns	
International*	
Other	1
Total	1

*Start time for products with service guarantees will begin when mail arrives at the local Post Office™ and items receive individual processing and acceptance scans.

B. USPS Action

Note to RSS Clerk:

1. Home screen > Mailing/Shipping > More
2. Select Shipment Confirm
3. Scan or enter the barcode/label number from PS Form 5630
4. Confirm the volume count message by selecting Yes or No
5. Select Pay and End Visit to complete transaction

USPS EMPLOYEE: Please scan upon pickup or receipt of mail.
Leave form with customer or in customer's mail receptacle.

USPS SCAN AT ACCEPTANCE



9275 0901 1935 6200 0020 4761 12

