

District I

1625 N. French Drive, Hobbs, NM 88240

District II

811 S. First St., Artesia, NM 88210

District III

1000 Rio Brazos Road, Aztec, NM 87410

District IV1220 S. St Francis Dr, Santa Fe, NM  
87505

State of New Mexico

PLC pDM2012957092 Form C-107-B  
Energy, Minerals and Natural Resources Department  
Revised August 1, 2011**OIL CONSERVATION DIVISION**1220 S. St Francis Drive  
Santa Fe, New Mexico 87505Submit the original  
application to the Santa Fe  
office with one copy to the  
appropriate District Office.**APPLICATION FOR SURFACE COMMINGLING (DIVERSE OWNERSHIP)**

OPERATOR NAME: Ascent Energy, LLC

OPERATOR ADDRESS: 1125 17<sup>th</sup> Street, Suite 410, Denver, CO 80202

APPLICATION TYPE:

☒ Pool Commingling ☐ Lease Commingling ☐ Pool and Lease Commingling ☐ Off-Lease Storage and Measurement (Only if not Surface Commingled)LEASE TYPE: ☐ Fee ☒ State ☐ FederalIs this an Amendment to existing Order? ☐ Yes ☒ No If "Yes", please include the appropriate Order No. \_\_\_\_\_

Have the Bureau of Land Management (BLM) and State Land office (SLO) been notified in writing of the proposed commingling

☒ Yes ☐ No**(A) POOL COMMINGLING**

Please attach sheets with the following information

(1) Pool Names and Codes	Gravities / BTU of Non-Commingled Production	Calculated Gravities / BTU of Commingled Production		Calculated Value of Commingled Production	Volumes
Please see attached					

(2) Are any wells producing at top allowables? ☐ Yes ☒ No(3) Has all interest owners been notified by certified mail of the proposed commingling? ☒ Yes ☐ No.(4) Measurement type: ☒ Metering ☐ Other (Specify)(5) Will commingling decrease the value of production? ☐ Yes ☒ No If "yes", describe why commingling should be approved**(B) LEASE COMMINGLING**

Please attach sheets with the following information

(1) Pool Name and Code.

(2) Is all production from same source of supply? ☐ Yes ☐ No(3) Has all interest owners been notified by certified mail of the proposed commingling? ☐ Yes ☐ No(4) Measurement type: ☐ Metering ☐ Other (Specify)**(C) POOL and LEASE COMMINGLING**

Please attach sheets with the following information

(1) Complete Sections A and E.

**(D) OFF-LEASE STORAGE and MEASUREMENT**

Please attached sheets with the following information

(1) Is all production from same source of supply? ☐ Yes ☐ No

(2) Include proof of notice to all interest owners.

**(E) ADDITIONAL INFORMATION (for all application types)**

Please attach sheets with the following information

(1) A schematic diagram of facility, including legal location.

(2) A plat with lease boundaries showing all well and facility locations. Include lease numbers if Federal or State lands are involved.

(3) Lease Names, Lease and Well Numbers, and API Numbers.

I hereby certify that the information above is true and complete to the best of my knowledge and belief.



SIGNATURE: \_\_\_\_\_ TITLE: Vice President of Land \_\_\_\_\_ DATE: March 23, 2020 \_\_\_\_\_

TYPE OR PRINT NAME: Lee Zink \_\_\_\_\_ TELEPHONE NO.: 720-710-8923 \_\_\_\_\_

E-MAIL ADDRESS: lzink@ascentenergy.us \_\_\_\_\_

### Application for Surface Pool/Lease Commingling

Ascent Energy, LLC ("Ascent") respectfully requests approval to surface pool/lease commingle oil & gas from the following wells:

<u>Well Name</u>	<u>Location</u>	<u>API NO.</u>	<u>Pool Name</u>	<u>Pool Code</u>	<u>Status</u>	<u>Oil BPD</u>	<u>Gravities</u>	<u>MSCFPD</u>	<u>BTU</u>
Toque State Com 501H	K-06-21S-33E	30-025-44148	WC-025 G-08 S213304D, Bone Spring	97895	Producing		40.2		1,372
Toque State Com 502H	K-06-21S-33E	30-025-44785	WC-025 G-08 S213304D, Bone Spring	97895	Producing		40.2		1,381
Toque State Com 601H	K-06-21S-33E	30-025-44787	WC-025 G-08 S213304D, Bone Spring	97895	Producing		42.3		1,400
Toque State Com 602H	K-06-21S-33E	30-025-44788	WC-025 G-08 S213304D, Bone Spring	97895	Producing		42.3		1,422
Toque State Com 701H	K-06-21S-33E	30-025-44789	WC-025 G-08 S213304D, Wolfcamp	98033	Producing		42.4		1,391

#### General Information

- State of New Mexico lease VB-2060 covers 311.13 acres, being lots 17, 18, E2SW, SE/4 of Section 6 in Township 21S South, Range 33 East, Lea County, New Mexico
- State of New Mexico lease VB-2837 covers 302.84 acres, being lots 1, 2, 3, 4, E2W2 in Section 7 in Township 21S South, Range 33 East, Lea County, New Mexico

#### Future Additions

Ascent Energy, LLC may drill additional wells within the same pool or leases to fully develop the reservoir at a future date.

### Process and Flow Description

The production from each of the five wells will flow into a dedicated free water knockout separation vessel. Each production stream will be separated into three independent streams (oil, gas, water) by the free water knockout separator and the gas and water will be measured individually after it exits. The oil stream will continue to the three-phase heater treater where it will move into the next step of the separation process. In the heater treater the production stream will be split into three independent streams and each stream will be measured individually (oil, gas, water) after it exits.

The gas from each free water knockout and each heater treater will be combined into a common header and connected to the sales / flare / fuel gas line. The gas will be measured using orifice meters and used to allocate total measured at the facility. Additional pad gas orifice meters will be used on sales gas line, flare gas line, and fuel gas line. The overhead gas from the vapor recovery tower is compressed by a vapor recovery unit and then measured by an orifice meter before joining the sales / flare / fuel header.

The water from each free water knockout and each heater treater will be combined into a common header and connected to six 1,000 bbl tanks where it will be pumped away to disposal via water transfer skids. The water will be measured using magnetic flow meters at each free water knock, each heater treater, and at each water transfer skid. Guided wave radar will be used to measure water volumes in the tanks.

The oil from each heater treater will be combined into a common header and connected to four 1,000 bbl tanks where it will be pumped away to sales via lease automatic custody transfer (LACT) unit. Guided wave radar will be used to measure oil volumes in the tanks.

- Toque State Com 501H. 30-025-44148
  - Gas Allocation Meter: G-1 orifice meter (free water knockout)
  - Gas Allocation Meter: G-2 orifice meter (heater treater)
  - Oil Allocation Meter: O-1 coriolis meter (heater treater)
  - Water Allocation Meter: W-2 mag meter (free water knockout)
  - Water Allocation Meter: W-1 mag meter (heater treater)
- Toque State Com 502H. 30-025-44785
  - Gas Allocation Meter: G-3 orifice meter (free water knockout)
  - Gas Allocation Meter: G-4 orifice meter (heater treater)
  - Oil Allocation Meter: O-2 coriolis meter (heater treater)
  - Water Allocation Meter: W-4 mag meter (free water knockout)
  - Water Allocation Meter: W-3 mag meter (heater treater)
- Toque State Com 601H. 30-025-44787
  - Gas Allocation Meter: G-5 orifice meter (free water knockout)
  - Gas Allocation Meter: G-6 orifice meter (heater treater)
  - Oil Allocation Meter: O-3 coriolis meter (heater treater)
  - Water Allocation Meter: W-6 mag meter (free water knockout)
  - Water Allocation Meter: W-5 mag meter (heater treater)
- Toque State Com 602H. 30-025-44788
  - Gas Allocation Meter: G-7 orifice meter (free water knockout)
  - Gas Allocation Meter: G-8 orifice meter (heater treater)
  - Oil Allocation Meter: O-4 coriolis meter (heater treater)
  - Water Allocation Meter: W-7 mag meter (free water knockout)
  - Water Allocation Meter: W-8 mag meter (heater treater)

- Toque State Com 701H. 30-025-44789
  - Gas Allocation Meter: G-9 orifice meter (free water knockout)
  - Gas Allocation Meter: G-10 orifice meter (heater treater)
  - Oil Allocation Meter: O-5 coriolis meter (heater treater)
  - Water Allocation Meter: W-2 mag meter (free water knockout)
  - Water Allocation Meter: W-1 mag meter (heater treater)
- Pad Meters
  - Gas Allocation Meter: G-14 orifice meter (sales gas)
  - Gas Allocation Meter: G-15 orifice meter (fuel gas)
  - Gas Allocation Meter: G-13 orifice meter (flare gas)
  - Gas Allocation Meter: G-11 orifice meter (vapor recovery unit)
  - Oil Allocation Meter: SK-901 coriolis meter (LACT)
  - Oil Allocation Meter: SK-902 coriolis meter (LACT)
  - Water Allocation Meter: SK-903 mag meter (water transfer skid)
  - Water Allocation Meter: SK-904 mag meter (water transfer skid)



March 23, 2020

NM Oil Conservation Division

Re: Pool/Lease Commingling Application  
Toque State Com Wells

To Whom it May Concern:

This letter serves notice that the ownership in the production from the following wells is uniform:

<b>Well Name</b>	<b>API NO.</b>	<b>Pool Name</b>	<b>Pool Code</b>
Toque State Com 501H	30-025-44148	WC-025 G-08 S213304D, Bone Spring	97895
Toque State Com 502H	30-025-44785	WC-025 G-08 S213304D, Bone Spring	97895
Toque State Com 601H	30-025-44787	WC-025 G-08 S213304D, Bone Spring	97895
Toque State Com 602H	30-025-44788	WC-025 G-08 S213304D, Bone Spring	97895
Toque State Com 701H	30-025-44789	WC-025 G-08 S213304D, Wolfcamp	98033

I certify that this information is true and correct to the best of my knowledge.

If you should have any question or concerns, please contact the undersigned at (720) 710-8923 or [lzink@ascentenergy.us](mailto:lzink@ascentenergy.us).

Sincerely,

A handwritten signature in blue ink, appearing to be "L. Zink", written over a light blue circular stamp.

Lee Zink  
Vice President of Land  
Ascent Energy, LLC

March 23, 2020

Page 2 of 2

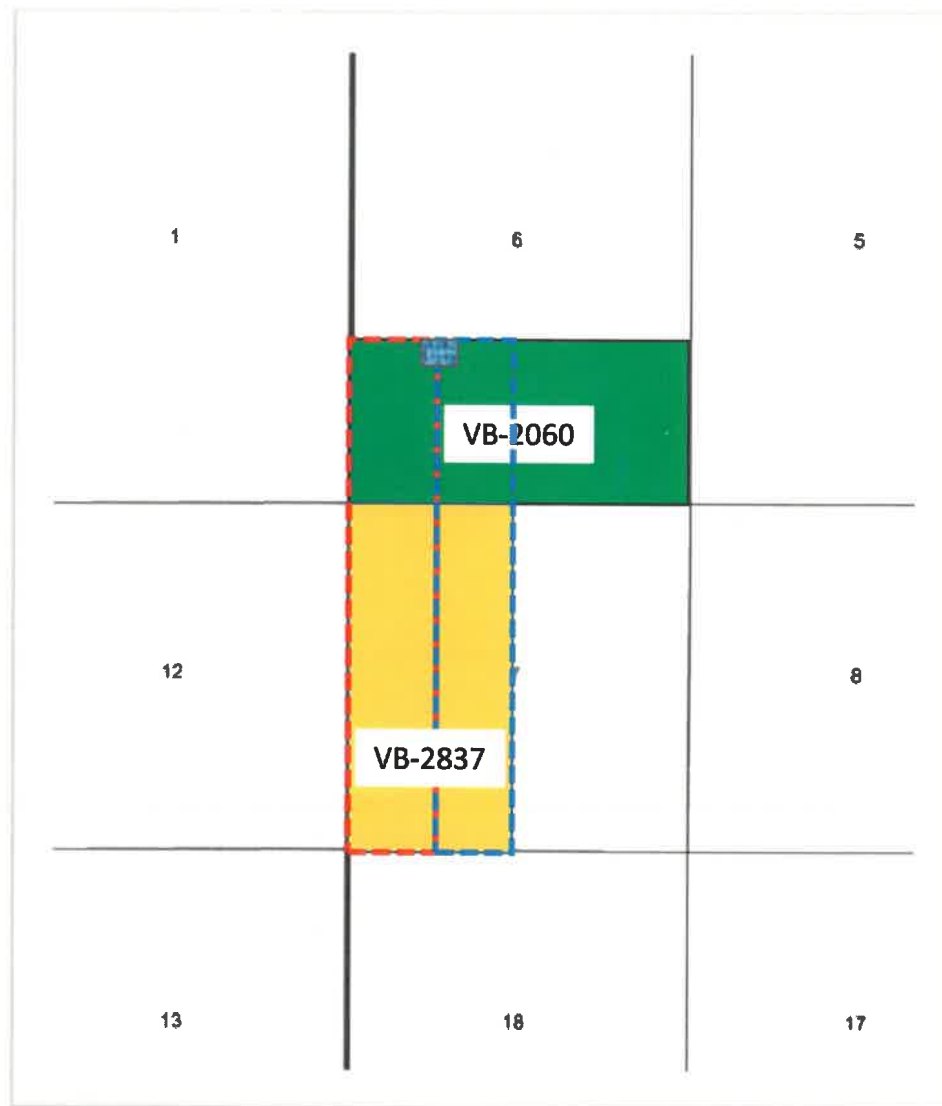
Commingling Application for Toque State Com Facility  
Ascent Energy, LLC  
Exhibit A – Notice List





New Mexico Conservation Division  
Attn: Mr. Dean McClure  
1220 South ST. Francis Drive  
Santa Fe, NM 87505

New Mexico Conservation Division  
Attn: Mr. Paul Kautz  
1625 N. French Drive  
Hobbs, NM 88240

Cimarex Energy, CO  
Attn: Mr. Cody Elliott  
600 N. Marienfeld Street, Suite 600  
Midland, TX 79701

T21S-R33E  
Lea County, NM



-  Toque State Com #501H (BS) Communization Agreement
-  Toque State Com #701H (WC) Communization Agreement
-  Toque State Com #502H (BS) Communization Agreement
-  Facilities Toque State Com Wells – 21S-33E Sec. 6





**District I**1625 N. French Dr., Hobbs, NM 88240  
Phone: (575) 393-6161 Fax: (575) 393-0720**District II**811 S. First St., Artesia, NM 88210  
Phone: (575) 748-1283 Fax: (575) 748-9720**District III**1000 Rio Brazos Road, Aztec, NM 87410  
Phone: (505) 334-6178 Fax: (505) 334-6170**District IV**1220 S. St. Francis Dr., Santa Fe, NM 87505  
Phone: (505) 476-3460 Fax: (505) 476-3462

State of New Mexico  
Energy, Minerals & Natural Resources Department  
**OIL CONSERVATION DIVISION**  
1220 South St. Francis Dr.  
Santa Fe, NM 87505

Form C-102

Revised August 1, 2011

Submit one copy to appropriate

District Office

☒ AMENDED REPORT**WELL LOCATION AND ACREAGE DEDICATION PLAT**

<sup>1</sup> API Number	<sup>2</sup> Pool Code	<sup>3</sup> Pool Name
<sup>4</sup> Property Code	<sup>5</sup> Property Name TOQUE STATE COM	
<sup>7</sup> OGRID No. 325830	<sup>8</sup> Operator Name ASCENT ENERGY	<sup>6</sup> Well Number 501H  <sup>9</sup> Elevation 3,795'

<sup>10</sup> Surface Location

UL or lot no.	Section	Township	Range	Lot Idn	Feet from the	North/South line	Feet from the	East/West line	County
K	6	21 S	33 E		2,514	SOUTH	1,760	WEST	LEA

<sup>11</sup> Bottom Hole Location If Different From Surface

UL or lot no.	Section	Township	Range	Lot Idn	Feet from the	North/South line	Feet from the	East/West line	County
N	7	21 S	33 E		100	SOUTH	2,030	WEST	LEA

<sup>12</sup> Dedicated Acres	<sup>13</sup> Joint or Infill	<sup>14</sup> Consolidation Code	<sup>15</sup> Order No.

No allowable will be assigned to this completion until all interests have been consolidated or a non-standard unit has been approved by the division.

	<b>GEODETIC COORDINATES</b> NAD 27 NME <b>SURFACE LOCATION</b> Y= 549,078.9 X= 721,864.3 LAT.= 32.507488°N LONG.= 103.613648°W  <b>FIRST TAKE POINT</b> NAD 27 NME Y= 549,103.7 X= 722,133.8 LAT.= 32.507538°N LONG.= 103.612771°W  <b>CORNER COORDINATES TABLE</b> NAD 27 NME A - Y= 549,202.0 N, X= 721,276.3 E B - Y= 549,208.1 N, X= 722,595.9 E C - Y= 546,563.4 N, X= 721,299.8 E D - Y= 546,567.2 N, X= 722,818.8 E E - Y= 543,922.9 N, X= 721,317.9 E F - Y= 543,929.3 N, X= 722,638.7 E G - Y= 541,280.5 N, X= 721,339.8 E H - Y= 541,288.5 N, X= 722,660.6 E  <b>CORNER COORDINATES TABLE</b> NAD 83 NME A - Y= 549,263.0 N, X= 782,457.5 E B - Y= 549,289.1 N, X= 783,777.1 E C - Y= 546,624.4 N, X= 782,481.1 E D - Y= 546,628.1 N, X= 783,788.1 E E - Y= 543,983.8 N, X= 782,489.3 E F - Y= 543,990.2 N, X= 783,820.1 E G - Y= 541,341.3 N, X= 782,521.0 E H - Y= 541,349.3 N, X= 783,842.1 E  <b>LAST TAKE POINT/BOTTOM HOLE LOCATION</b> NAD 27 NME Y= 541,385.6 X= 722,188.5 LAT.= 32.486317°N LONG.= 103.612769°W  <b>LAST TAKE POINT/BOTTOM HOLE LOCATION</b> NAD 83 NME Y= 541,448.4 X= 783,368.0 LAT.= 32.486436°N LONG.= 103.613259°W	<b><sup>17</sup> OPERATOR CERTIFICATION</b> I hereby certify that the information contained herein is true and complete to the best of my knowledge and belief, and that this organization either owns a working interest or unleased mineral interest in the land including the proposed bottom hole location or has a right to drill this well at this location pursuant to a contract with an owner of such a mineral or working interest, or to a voluntary pooling agreement or a compulsory pooling order heretofore entered by the division.  Signature Date 5/22/19 Printed Name E-mail Address dgimbel@ascenenergy.us
	<b><sup>18</sup> SURVEYOR CERTIFICATION</b> I hereby certify that the well location shown on this plat was plotted from field notes of actual surveys made by me or under my supervision, and that the same is true and correct to the best of my belief.  05-21-2019 Date of Survey Signature and Seal of Professional Surveyor:  MARK DILLON HARP 23786 Certificate Number RR/AW/IM 2018010482	

**District I**  
1625 N. French Dr., Hobbs, NM 88240  
Phone: (575) 393-6161 Fax: (575) 393-0720

**District II**  
811 S. First St., Artesia, NM 88210  
Phone: (575) 748-1283 Fax: (575) 748-9720

**District III**  
1000 Rio Brazos Road, Aztec, NM 87410  
Phone: (505) 334-6178 Fax: (505) 334-6170

**District IV**  
1220 S. St. Francis Dr., Santa Fe, NM 87505  
Phone: (505) 476-3460 Fax: (505) 476-3462

State of New Mexico  
Energy, Minerals & Natural Resources Department  
**OIL CONSERVATION DIVISION**  
1220 South St. Francis Dr.  
Santa Fe, NM 87505

Form C-102  
Revised August 1, 2011  
Submit one copy to appropriate  
District Office

☒ AMENDED REPORT

**WELL LOCATION AND ACREAGE DEDICATION PLAT**

<sup>1</sup> API Number		<sup>2</sup> Pool Code		<sup>3</sup> Pool Name	
<sup>4</sup> Property Code		<sup>5</sup> Property Name TOQUE STATE COM			<sup>6</sup> Well Number 502H
<sup>7</sup> OGRID No. 325830		<sup>8</sup> Operator Name ASCENT ENERGY			<sup>9</sup> Elevation 3,795'
<sup>10</sup> Surface Location					
UL or lot no. K	Section 6	Township 21 S	Range 33 E	Lot Idn	Feet from the 2,514
				North/South line SOUTH	Feet from the 1,670
				East/West line WEST	County LEA
<sup>11</sup> Bottom Hole Location If Different From Surface					
UL or lot no. L4	Section 7	Township 21 S	Range 33 E	Lot Idn	Feet from the 100
				North/South line SOUTH	Feet from the 660
				East/West line WEST	County LEA
<sup>12</sup> Dedicated Acres		<sup>13</sup> Joint or Infill		<sup>14</sup> Consolidation Code	
				<sup>15</sup> Order No.	

No allowable will be assigned to this completion until all interests have been consolidated or a non-standard unit has been approved by the division.

	<b>GRID AZ. = 271°10'48"</b> <b>HORIZ. DIST. = 1,010.57'</b>	<b>GEODETIC COORDINATES</b> NAD 27 NME SURFACE LOCATION Y= 549,078.8 X= 721,774.4 LAT.= 32.507471°N LONG.= 103.613938°W	<b>GEODETIC COORDINATES</b> NAD 83 NME SURFACE LOCATION Y= 549,139.8 X= 762,855.6 LAT.= 32.507592°N LONG.= 103.614428°W	<b>17 OPERATOR CERTIFICATION</b> I hereby certify that the information contained herein is true and complete to the best of my knowledge and belief, and that this organization either owns a working interest or unleased mineral interest in the land including the proposed bottom hole location or has a right to drill this well at this location pursuant to a contract with an owner of such a mineral or working interest, or to a voluntary pooling agreement or a compulsory pooling order heretofore entered by the division.  Signature Date 5/22/19 Printed Name dgimbel@ascentenergy.com E-mail Address
	<b>FIRST TAKE POINT</b> NAD 27 NME Y= 549,099.6 X= 720,784.0 LAT.= 32.507547°N LONG.= 103.617214°W	<b>FIRST TAKE POINT</b> NAD 83 NME Y= 549,160.6 X= 761,945.2 LAT.= 32.507668°N LONG.= 103.617705°W		
	<b>CORNER COORDINATES TABLE</b> NAD 27 NME A - Y= 549,202.0 N, X= 721,276.3 E B - Y= 549,196.6 N, X= 720,103.1 E C - Y= 546,563.4 N, X= 721,299.8 E D - Y= 546,560.0 N, X= 720,126.9 E E - Y= 543,922.9 N, X= 721,317.8 E F - Y= 543,917.2 N, X= 720,138.9 E G - Y= 541,280.5 N, X= 721,339.6 E H - Y= 541,273.5 N, X= 720,157.3 E			
	<b>CORNER COORDINATES TABLE</b> NAD 83 NME A - Y= 549,263.0 N, X= 762,457.5 E B - Y= 549,257.6 N, X= 761,284.3 E C - Y= 546,624.4 N, X= 762,481.1 E D - Y= 546,621.0 N, X= 761,308.2 E E - Y= 543,983.8 N, X= 762,499.3 E F - Y= 543,978.1 N, X= 761,320.2 E G - Y= 541,341.3 N, X= 762,521.0 E H - Y= 541,334.3 N, X= 761,338.7 E			
<b>LAST TAKE POINT/BOTTOM HOLE LOCATION</b> NAD 27 NME Y= 541,377.4 X= 720,816.6 LAT.= 32.486320°N LONG.= 103.617212°W		<b>LAST TAKE POINT/BOTTOM HOLE LOCATION</b> NAD 83 NME Y= 541,436.2 X= 761,996.0 LAT.= 32.486441°N LONG.= 103.617702°W		<b>18 SURVEYOR CERTIFICATION</b> I hereby certify that the well location shown on this plat was plotted from field notes of actual surveys made by me or under my supervision, and that the same is true and correct to the best of my belief. 05-21-2019 Date of Survey Signature and Seal of Professional Surveyor:  MARK DILLON HARP 23786 Certificate Number RR/AW/TM 2018010487

**District I**1625 N. French Dr., Hobbs, NM 88240  
Phone: (575) 393-6161 Fax: (575) 393-0720**District II**811 S. First St., Artesia, NM 88210  
Phone: (575) 748-1283 Fax: (575) 748-9720**District III**1000 Rio Brazos Road, Aztec, NM 87410  
Phone: (505) 334-6178 Fax: (505) 334-6170**District IV**1220 S. St. Francis Dr., Santa Fe, NM 87505  
Phone: (505) 476-3460 Fax: (505) 476-3462

State of New Mexico  
Energy, Minerals & Natural Resources Department  
**OIL CONSERVATION DIVISION**  
1220 South St. Francis Dr.  
Santa Fe, NM 87505

Form C-102

Revised August 1, 2011

Submit one copy to appropriate

District Office

☒ AMENDED REPORT**WELL LOCATION AND ACREAGE DEDICATION PLAT**

<sup>1</sup> API Number	<sup>2</sup> Pool Code	<sup>3</sup> Pool Name
<sup>4</sup> Property Code	<sup>5</sup> Property Name TOQUE STATE COM	<sup>6</sup> Well Number 601H
<sup>7</sup> OGRID No. 325830	<sup>8</sup> Operator Name ASCENT ENERGY	<sup>9</sup> Elevation 3,795'

**<sup>10</sup> Surface Location**

UL or lot no.	Section	Township	Range	Lot Idn	Feet from the	North/South line	Feet from the	East/West line	County
K	6	21 S	33 E		2,514	SOUTH	1,790	WEST	LEA

**<sup>11</sup> Bottom Hole Location If Different From Surface**

UL or lot no.	Section	Township	Range	Lot Idn	Feet from the	North/South line	Feet from the	East/West line	County
N	7	21 S	33 E		100	SOUTH	2,162	WEST	LEA

<sup>12</sup> Dedicated Acres	<sup>13</sup> Joint or Infill	<sup>14</sup> Consolidation Code	<sup>15</sup> Order No.
-------------------------------	-------------------------------	----------------------------------	-------------------------

No allowable will be assigned to this completion until all interests have been consolidated or a non-standard unit has been approved by the division.

	<p><b>GRID AZ. = 85°45'17"</b> <b>HORIZ. DIST. = 372.39'</b></p> <p><b>GRID AZ. = 179°31'46"</b> <b>HORIZ. DIST. = 7,720.54'</b></p> <p><b>SEC. 6</b> <b>T21S R33E</b></p> <p><b>SEC. 7</b> <b>T21S R33E</b></p> <p><b>SEC. 18</b> <b>T21S R33E</b></p>	<p><b>GEODETIC COORDINATES</b> NAD 27 NME SURFACE LOCATION Y = 549,078.0 X = 721,894.3 LAT. = 32.507488°N LONG. = 103.613549°W</p> <p><b>GEODETIC COORDINATES</b> NAD 83 NME SURFACE LOCATION Y = 549,140.0 X = 763,075.5 LAT. = 32.507580°N LONG. = 103.614039°W</p> <p><b>FIRST TAKE POINT</b> NAD 27 NME Y = 549,108.5 X = 722,285.7 LAT. = 32.507538°N LONG. = 103.612343°W</p> <p><b>FIRST TAKE POINT</b> NAD 83 NME Y = 549,187.5 X = 763,446.9 LAT. = 32.507658°N LONG. = 103.612834°W</p> <p><b>CORNER COORDINATES TABLE</b> NAD 27 NME</p> <table> <tr><td>A - Y = 549,202.0 N, X = 721,278.3 E</td></tr> <tr><td>B - Y = 549,208.1 N, X = 722,595.9 E</td></tr> <tr><td>C - Y = 546,563.4 N, X = 721,299.8 E</td></tr> <tr><td>D - Y = 546,567.2 N, X = 722,616.8 E</td></tr> <tr><td>E - Y = 543,922.9 N, X = 721,317.9 E</td></tr> <tr><td>F - Y = 543,928.3 N, X = 722,638.7 E</td></tr> <tr><td>G - Y = 541,280.5 N, X = 721,339.6 E</td></tr> <tr><td>H - Y = 541,288.5 N, X = 722,660.6 E</td></tr> </table> <p><b>CORNER COORDINATES TABLE</b> NAD 83 NME</p> <table> <tr><td>A - Y = 549,263.0 N, X = 762,457.5 E</td></tr> <tr><td>B - Y = 549,269.1 N, X = 763,777.1 E</td></tr> <tr><td>C - Y = 546,624.4 N, X = 762,481.1 E</td></tr> <tr><td>D - Y = 546,628.1 N, X = 763,798.1 E</td></tr> <tr><td>E - Y = 543,983.8 N, X = 762,499.3 E</td></tr> <tr><td>F - Y = 543,990.2 N, X = 763,820.1 E</td></tr> <tr><td>G - Y = 541,341.3 N, X = 762,521.0 E</td></tr> <tr><td>H - Y = 541,349.3 N, X = 763,842.1 E</td></tr> </table> <p><b>LAST TAKE POINT/BOTTOM HOLE LOCATION</b> NAD 27 NME Y = 541,386.5 X = 722,328.8 LAT. = 32.486317°N LONG. = 103.612308°W</p> <p><b>LAST TAKE POINT/BOTTOM HOLE LOCATION</b> NAD 83 NME Y = 541,447.3 X = 763,510.3 LAT. = 32.486438°N LONG. = 103.612797°W</p>	A - Y = 549,202.0 N, X = 721,278.3 E	B - Y = 549,208.1 N, X = 722,595.9 E	C - Y = 546,563.4 N, X = 721,299.8 E	D - Y = 546,567.2 N, X = 722,616.8 E	E - Y = 543,922.9 N, X = 721,317.9 E	F - Y = 543,928.3 N, X = 722,638.7 E	G - Y = 541,280.5 N, X = 721,339.6 E	H - Y = 541,288.5 N, X = 722,660.6 E	A - Y = 549,263.0 N, X = 762,457.5 E	B - Y = 549,269.1 N, X = 763,777.1 E	C - Y = 546,624.4 N, X = 762,481.1 E	D - Y = 546,628.1 N, X = 763,798.1 E	E - Y = 543,983.8 N, X = 762,499.3 E	F - Y = 543,990.2 N, X = 763,820.1 E	G - Y = 541,341.3 N, X = 762,521.0 E	H - Y = 541,349.3 N, X = 763,842.1 E	<p><b>17 OPERATOR CERTIFICATION</b> I hereby certify that the information contained herein is true and complete to the best of my knowledge and belief, and that this organization either owns a working interest or unleased mineral interest in the land including the proposed bottom hole location or has a right to drill this well at this location pursuant to a contract with an owner of such a mineral or working interest, or to a voluntary pooling agreement or a compulsory pooling order heretofore entered by the division.</p> <p>Signature: <i>Dean Gimbel</i> Date: 5/22/19</p> <p>Printed Name: <i>Dean Gimbel</i></p> <p>E-mail Address: <i>dgimbel@ascentenergy.us</i></p> <p><b>18 SURVEYOR CERTIFICATION</b> I hereby certify that the well location shown on this plat was plotted from field notes of actual surveys made by me or under my supervision, and that the same is true and correct to the best of my belief.</p> <p>05-21-2019 Date of Survey</p> <p>Signature and Seal of Professional Surveyor: <i>Mark Dillon Harp</i></p> <p>MARK DILLON HARP 23786 Certificate Number</p> <p>RR/AW/TM 2018010484</p>
	A - Y = 549,202.0 N, X = 721,278.3 E																		
	B - Y = 549,208.1 N, X = 722,595.9 E																		
	C - Y = 546,563.4 N, X = 721,299.8 E																		
D - Y = 546,567.2 N, X = 722,616.8 E																			
E - Y = 543,922.9 N, X = 721,317.9 E																			
F - Y = 543,928.3 N, X = 722,638.7 E																			
G - Y = 541,280.5 N, X = 721,339.6 E																			
H - Y = 541,288.5 N, X = 722,660.6 E																			
A - Y = 549,263.0 N, X = 762,457.5 E																			
B - Y = 549,269.1 N, X = 763,777.1 E																			
C - Y = 546,624.4 N, X = 762,481.1 E																			
D - Y = 546,628.1 N, X = 763,798.1 E																			
E - Y = 543,983.8 N, X = 762,499.3 E																			
F - Y = 543,990.2 N, X = 763,820.1 E																			
G - Y = 541,341.3 N, X = 762,521.0 E																			
H - Y = 541,349.3 N, X = 763,842.1 E																			



**District I**1625 N. French Dr., Hobbs, NM 88240  
Phone: (575) 393-6161 Fax: (575) 393-0720**District II**811 S. First St., Artesia, NM 88210  
Phone: (575) 748-1283 Fax: (575) 748-9720**District III**1000 Rio Brazos Road, Aztec, NM 87410  
Phone: (505) 334-6178 Fax: (505) 334-6170**District IV**1220 S. St. Francis Dr., Santa Fe, NM 87505  
Phone: (505) 476-3460 Fax: (505) 476-3462

State of New Mexico  
Energy, Minerals & Natural Resources Department  
**OIL CONSERVATION DIVISION**  
1220 South St. Francis Dr.  
Santa Fe, NM 87505

Form C-102

Revised August 1, 2011

Submit one copy to appropriate

District Office

☒ AMENDED REPORT**WELL LOCATION AND ACREAGE DEDICATION PLAT**

<sup>1</sup> API Number	<sup>2</sup> Pool Code	<sup>3</sup> Pool Name
<sup>4</sup> Property Code	<sup>5</sup> Property Name TOQUE STATE COM	<sup>6</sup> Well Number 602H
<sup>7</sup> OGRID No. 325830	<sup>8</sup> Operator Name ASCENT ENERGY	<sup>9</sup> Elevation 3,795'

**10 Surface Location**

UL or lot no.	Section	Township	Range	Lot Idn	Feet from the	North/South line	Feet from the	East/West line	County
K	6	21 S	33 E		2,514	SOUTH	1,700	WEST	LEA

**11 Bottom Hole Location If Different From Surface**

UL or lot no.	Section	Township	Range	Lot Idn	Feet from the	North/South line	Feet from the	East/West line	County
L4	7	21 S	33 E		100	SOUTH	840	WEST	LEA

<sup>12</sup> Dedicated Acres	<sup>13</sup> Joint or Infill	<sup>14</sup> Consolidation Code	<sup>15</sup> Order No.
-------------------------------	-------------------------------	----------------------------------	-------------------------

No allowable will be assigned to this completion until all interests have been consolidated or a non-standard unit has been approved by the division.

	<b>GEODETIC COORDINATES</b> NAD 27 NME SURFACE LOCATION Y= 549,078.9 X= 721,804.4 LAT.= 32.507471°N LONG.= 103.613840°W  FIRST TAKE POINT NAD 27 NME Y= 549,100.5 X= 720,944.0 LAT.= 32.507546°N LONG.= 103.616831°W	<b>GEODETIC COORDINATES</b> NAD 83 NME SURFACE LOCATION Y= 549,139.9 X= 762,985.6 LAT.= 32.507591°N LONG.= 103.614331°W  FIRST TAKE POINT NAD 83 NME Y= 549,161.5 X= 762,125.2 LAT.= 32.507667°N LONG.= 103.617121°W	<b>17 OPERATOR CERTIFICATION</b> I hereby certify that the information contained herein is true and complete to the best of my knowledge and belief, and that this organization either owns a working interest or unleased mineral interest in the land including the proposed bottom hole location or has a right to drill this well at this location pursuant to a contract with an owner of such a mineral or working interest, or to a voluntary pooling agreement or a compulsory pooling order heretofore entered by the division.  Signature Date 5/22/19  Printed Name dgimbels@ascentenergy.us E-mail Address
	<b>CORNER COORDINATES TABLE</b> NAD 27 NME A - Y= 549,202.0 N, X= 721,276.3 E B - Y= 549,186.6 N, X= 720,103.1 E C - Y= 546,563.4 N, X= 721,289.8 E D - Y= 546,560.0 N, X= 720,125.9 E E - Y= 543,922.9 N, X= 721,317.9 E F - Y= 543,917.2 N, X= 720,138.9 E G - Y= 541,280.5 N, X= 721,339.6 E H - Y= 541,273.5 N, X= 720,157.3 E		
	<b>CORNER COORDINATES TABLE</b> NAD 83 NME A - Y= 549,263.0 N, X= 762,457.5 E B - Y= 549,257.6 N, X= 761,284.3 E C - Y= 546,624.4 N, X= 762,481.1 E D - Y= 546,621.0 N, X= 761,308.2 E E - Y= 543,983.8 N, X= 762,499.3 E F - Y= 543,978.1 N, X= 761,320.2 E G - Y= 541,341.3 N, X= 762,521.0 E H - Y= 541,334.3 N, X= 761,338.7 E		
	<b>LAST TAKE POINT/BOTTOM HOLE LOCATION</b> NAD 27 NME Y= 541,378.5 X= 720,996.6 LAT.= 32.486320°N LONG.= 103.616828°W  <b>LAST TAKE POINT/BOTTOM HOLE LOCATION</b> NAD 83 NME Y= 541,439.3 X= 762,178.0 LAT.= 32.486441°N LONG.= 103.617118°W		
<b>18 SURVEYOR CERTIFICATION</b> I hereby certify that the well location shown on this plat was plotted from field notes of actual surveys made by me or under my supervision, and that the same is true and correct to the best of my belief.  05-21-2019 Date of Survey Signature and Seal of Professional Surveyor:  MARK DILLON HARP 23786 Certificate Number  RR/AW/TM 2018010478			

District I1625 N. French Dr., Hobbs, NM 88240  
Phone: (575) 393-6161 Fax: (575) 393-0720District II811 S. First St., Artesia, NM 88210  
Phone: (575) 748-1283 Fax: (575) 748-9720District III1000 Rio Brazos Road, Aztec, NM 87410  
Phone: (505) 334-6178 Fax: (505) 334-6170District IV1220 S. St. Francis Dr., Santa Fe, NM 87505  
Phone: (505) 476-3460 Fax: (505) 476-3462

State of New Mexico  
Energy, Minerals & Natural Resources Department  
**OIL CONSERVATION DIVISION**  
1220 South St. Francis Dr.  
Santa Fe, NM 87505

Form C-102

Revised August 1, 2011

Submit one copy to appropriate

District Office

☒ AMENDED REPORT**WELL LOCATION AND ACREAGE DEDICATION PLAT**

<sup>1</sup> API Number		<sup>2</sup> Pool Code		<sup>3</sup> Pool Name					
<sup>4</sup> Property Code		<sup>5</sup> Property Name TOQUE STATE COM						<sup>6</sup> Well Number 701H	
<sup>7</sup> OGRID No. 325830		<sup>8</sup> Operator Name ASCENT ENERGY						<sup>9</sup> Elevation 3,796'	

<sup>10</sup> Surface Location									
UL or lot no.	Section	Township	Range	Lot Idn	Feet from the	North/South line	Feet from the	East/West line	County
K	6	21 S	33 E		2,514	SOUTH	1,730	WEST	LEA

<sup>11</sup> Bottom Hole Location If Different From Surface									
UL or lot no.	Section	Township	Range	Lot Idn	Feet from the	North/South line	Feet from the	East/West line	County
N	7	21 S	33 E		100	SOUTH	1,500	WEST	LEA

<sup>12</sup> Dedicated Acres	<sup>13</sup> Joint or Infill	<sup>14</sup> Consolidation Code	<sup>15</sup> Order No.
-------------------------------	-------------------------------	----------------------------------	-------------------------

No allowable will be assigned to this completion until all interests have been consolidated or a non-standard unit has been approved by the division.

	<p><b>GEODETC COORDINATES</b> NAD 27 NME SURFACE LOCATION Y= 549,078.7 X= 721,834.2 LAT.= 32.507489°N LONG.= 103.613744°W</p> <p><b>FIRST TAKE POINT</b> NAD 27 NME Y= 549,103.5 X= 721,604.0 LAT.= 32.507542°N LONG.= 103.614490°W</p> <p><b>CORNER COORDINATES TABLE</b> NAD 27 NME</p> <table border="1" style="width: 100%; border-collapse: collapse;"> <tr><td>A - Y= 549,202.0 N, X= 721,276.3 E</td></tr> <tr><td>B - Y= 549,205.1 N, X= 722,595.9 E</td></tr> <tr><td>C - Y= 546,563.4 N, X= 721,289.8 E</td></tr> <tr><td>D - Y= 546,567.2 N, X= 722,616.8 E</td></tr> <tr><td>E - Y= 543,922.9 N, X= 721,317.9 E</td></tr> <tr><td>F - Y= 543,929.3 N, X= 722,638.7 E</td></tr> <tr><td>G - Y= 541,280.5 N, X= 721,339.6 E</td></tr> <tr><td>H - Y= 541,288.5 N, X= 722,660.6 E</td></tr> </table> <p><b>CORNER COORDINATES TABLE</b> NAD 83 NME</p> <table border="1" style="width: 100%; border-collapse: collapse;"> <tr><td>A - Y= 549,263.0 N, X= 762,457.5 E</td></tr> <tr><td>B - Y= 549,289.1 N, X= 763,777.1 E</td></tr> <tr><td>C - Y= 546,624.4 N, X= 762,481.1 E</td></tr> <tr><td>D - Y= 546,628.1 N, X= 763,798.1 E</td></tr> <tr><td>E - Y= 543,983.8 N, X= 762,499.3 E</td></tr> <tr><td>F - Y= 543,990.2 N, X= 763,820.1 E</td></tr> <tr><td>G - Y= 541,341.3 N, X= 762,521.0 E</td></tr> <tr><td>H - Y= 541,349.3 N, X= 763,842.1 E</td></tr> </table> <p><b>LAST TAKE POINT/BOTTOM HOLE LOCATION</b> NAD 27 NME Y= 541,382.4 X= 721,658.5 LAT.= 32.486318°N LONG.= 103.614483°W</p> <p><b>LAST TAKE POINT/BOTTOM HOLE LOCATION</b> NAD 83 NME Y= 541,443.2 X= 762,837.9 LAT.= 32.486439°N LONG.= 103.614978°W</p>	A - Y= 549,202.0 N, X= 721,276.3 E	B - Y= 549,205.1 N, X= 722,595.9 E	C - Y= 546,563.4 N, X= 721,289.8 E	D - Y= 546,567.2 N, X= 722,616.8 E	E - Y= 543,922.9 N, X= 721,317.9 E	F - Y= 543,929.3 N, X= 722,638.7 E	G - Y= 541,280.5 N, X= 721,339.6 E	H - Y= 541,288.5 N, X= 722,660.6 E	A - Y= 549,263.0 N, X= 762,457.5 E	B - Y= 549,289.1 N, X= 763,777.1 E	C - Y= 546,624.4 N, X= 762,481.1 E	D - Y= 546,628.1 N, X= 763,798.1 E	E - Y= 543,983.8 N, X= 762,499.3 E	F - Y= 543,990.2 N, X= 763,820.1 E	G - Y= 541,341.3 N, X= 762,521.0 E	H - Y= 541,349.3 N, X= 763,842.1 E	<p><b><sup>17</sup> OPERATOR CERTIFICATION</b> I hereby certify that the information contained herein is true and complete to the best of my knowledge and belief, and that this organization either owns a working interest or unleased mineral interest in the land including the proposed bottom hole location or has a right to drill this well at this location pursuant to a contract with an owner of such a mineral or working interest, or to a voluntary pooling agreement or a compulsory pooling order heretofore entered by the division.</p> <p>Signature: <i>Dean Gimbel</i> Date: 5/22/19 Printed Name: Dean Gimbel E-mail Address: dgimbel@ascenergy.us</p>
A - Y= 549,202.0 N, X= 721,276.3 E																		
B - Y= 549,205.1 N, X= 722,595.9 E																		
C - Y= 546,563.4 N, X= 721,289.8 E																		
D - Y= 546,567.2 N, X= 722,616.8 E																		
E - Y= 543,922.9 N, X= 721,317.9 E																		
F - Y= 543,929.3 N, X= 722,638.7 E																		
G - Y= 541,280.5 N, X= 721,339.6 E																		
H - Y= 541,288.5 N, X= 722,660.6 E																		
A - Y= 549,263.0 N, X= 762,457.5 E																		
B - Y= 549,289.1 N, X= 763,777.1 E																		
C - Y= 546,624.4 N, X= 762,481.1 E																		
D - Y= 546,628.1 N, X= 763,798.1 E																		
E - Y= 543,983.8 N, X= 762,499.3 E																		
F - Y= 543,990.2 N, X= 763,820.1 E																		
G - Y= 541,341.3 N, X= 762,521.0 E																		
H - Y= 541,349.3 N, X= 763,842.1 E																		
<p><b><sup>18</sup> SURVEYOR CERTIFICATION</b> I hereby certify that the well location shown on this plat was plotted from field notes of actual surveys made by me or under my supervision, and that the same is true and correct to the best of my belief.</p> <p>05-21-2019 Date of Survey</p> <p>Signature and Seal of Professional Surveyor: <i>Mark Dillon Harp</i></p> <p>MARK DILLON HARP 23786 Certificate Number</p> <p style="text-align: right;">RR/AW/TM 2018010488</p>																		