

Additional Information

Tyler, TX 75701

W- 903-561-2900 (Ext 7647)

C – 832-217-6852

tharrington@mewbourne.com

From: Garcia, John A, EMNRD <JohnA.Garcia@state.nm.us>

Sent: Wednesday, June 17, 2020 3:45 PM

To: Tim Harrington <tharrington@mewbourne.com>

Subject: [EXT] Silver Bullet 16 SWD #1

Tim,

I was wondering if you had a clearer map for the offset operators / leaseholders as the one provided is difficult to read. It appears that Yates Petroleum et al and Pogo Production are within the AOR but were not noticed can you explain why they were not noticed or provided proof of notice to them. Can you provide a clear map of the AOR?

Thank you,

John Garcia

Petroleum Specialist

Oil Conservation Division

1220 South St. Francis Drive

Santa Fe, New Mexico 87505

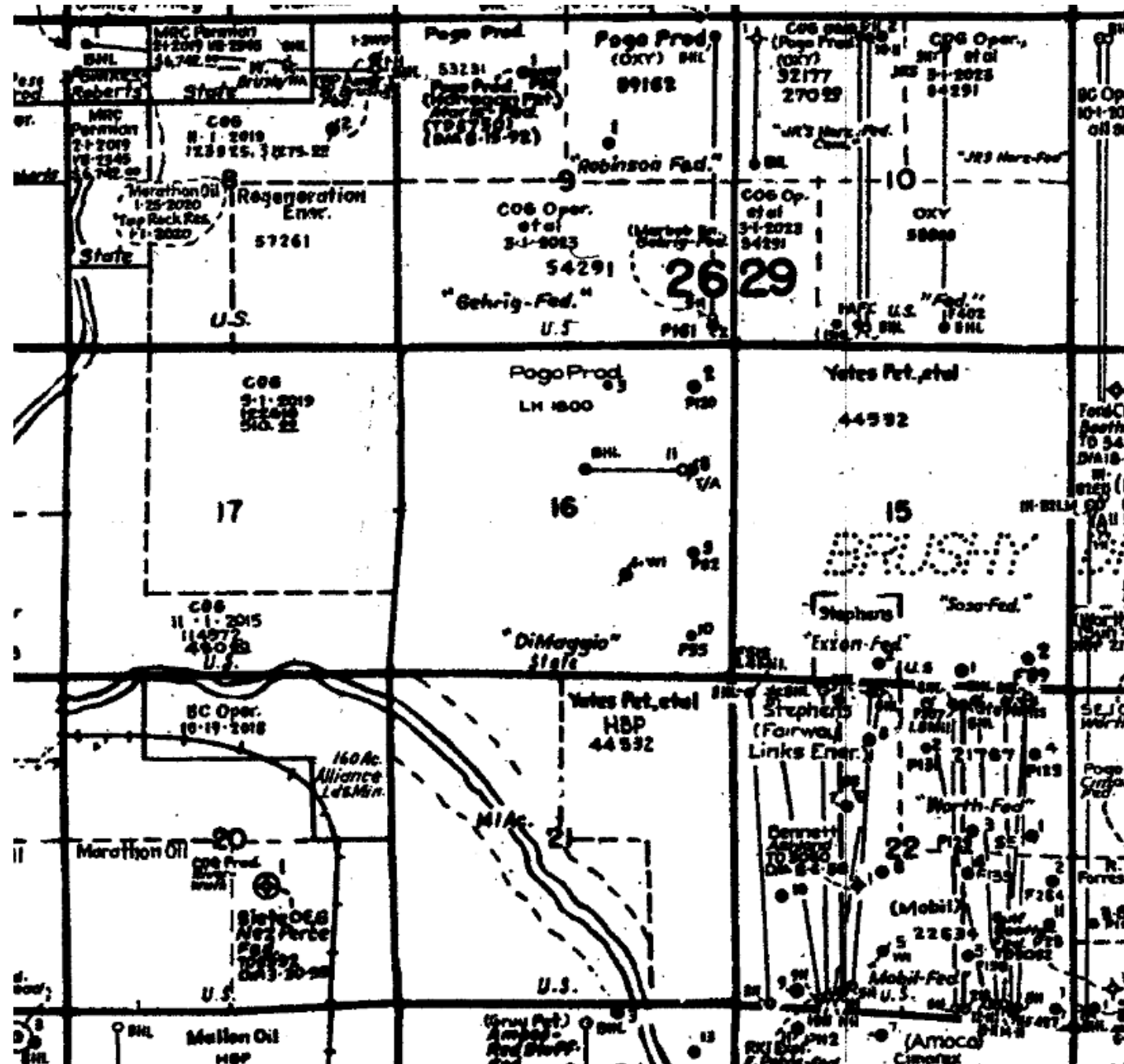
505-476-3441





Sec 22: operators – RKI, Stephens & Johnson

Midland Map
Ownership
Map



Garcia, John A, EMNRD

From: Tim Harrington <tharrington@mewbourne.com>
Sent: Tuesday, June 16, 2020 11:58 AM
To: Garcia, John A, EMNRD
Subject: RE: [EXT] Silver Bullet 16 SWD #1
Attachments: MOC Silver Bullet 16 SWD permit corrections.pdf

Hi John:

Thank you for noticing the footage differences in our application. The well is located 275' from the east line (see survey plat header below). I have attached corrected documents for your review.

I determined my parties requiring notice using the 275' FEL. There are no notice issues. Thanks.

District I
1625 N. French Dr., Hobbs, NM 88240
Phone: (575) 393-6161 Fax: (575) 393-0720
District II
811 S. First St., Artesia, NM 88210
Phone: (575) 748-1283 Fax: (575) 748-9720
District III
1000 Rio Brazos Road, Aztec, NM 87410
Phone: (505) 334-6178 Fax: (505) 334-6170
District IV
1220 S. St. Francis Dr., Santa Fe, NM 87505
Phone: (505) 476-3460 Fax: (505) 476-3462

State of New Mexico
Energy, Minerals & Natural Resources Department
OIL CONSERVATION DIVISION
1220 South St. Francis Dr.
Santa Fe, NM 87505

Form
Revised August 1
Submit one copy to appropriate
District

☐ AMENDED RE

WELL LOCATION AND ACREAGE DEDICATION PLAT

¹ API Number		² Pool Code		³ Pool Name					
⁴ Property Code		⁵ Property Name SILVER BULLET 16 SWD						⁶ Well Number 1	
⁷ GRID NO.		⁸ Operator Name MEWBOURNE OIL COMPANY						⁹ Elevation 2929'	
¹⁰ Surface Location									
UL or lot no. I	Section 16	Township 26S	Range 29E	Lot Idn	Feet from the 1980	North/South line SOUTH	Feet From the 275	East/West line EAST	County EDDY
¹¹ Bottom Hole Location If Different From Surface									
UL or lot no.	Section	Township	Range	Lot Idn	Feet from the	North/South line	Feet from the	East/West line	County
¹² Dedicated Acres		¹³ Joint or Infill		¹⁴ Consolidation Code		¹⁵ Order No.			

Tim Harrington
Reservoir Engineer
Mewbourne Oil Company
3620 Old Bullard Road
PO Box 7698
Tyler, TX 75701

W- 903-561-2900 (Ext 7647)
C – 832-217-6852

From: Garcia, John A, EMNRD <JohnA.Garcia@state.nm.us>
Sent: Tuesday, June 16, 2020 10:05 AM
To: Tim Harrington <tharrington@mewbourne.com>
Subject: [EXT] Silver Bullet 16 SWD #1

Tim,

I am currently reviewing the Silver Bullet 16 SWD #1. I was wondering if you could clarify for me which footages are correct in the application for SHL.

1980' FSL & **275'** FEL Are reflected in the following:
Letter to OCD (Page 3)
C-102 (Page 12)
Newspaper Article (Page 31)

1980' FSL & **270'** FEL Are reflected in the following:
Well data sheet (Page 7)
Listing of Notified Persons (Page 23)

Does the difference in footages affect any notice issues? What footages were the notices based on?

Thank you,

John Garcia
Petroleum Specialist
Oil Conservation Division
1220 South St. Francis Drive
Santa Fe, New Mexico 87505
505-476-3441



District I
1625 N. French Dr., Hobbs, NM 88240
Phone: (575) 393-6161 Fax: (575) 393-0720
District II
811 S. First St., Artesia, NM 88210
Phone: (505) 748-1283 Fax: (505) 748-9720
District III
1000 Rio Brazos Road, Aztec, NM 87410
Phone: (505) 334-6178 Fax: (505) 334-6170
District IV
1220 S. St. Francis Dr., Santa Fe, NM 87505
Phone: (505) 476-3460 Fax: (505) 476-3462

State of New Mexico
Energy, Minerals & Natural Resources Department
OIL CONSERVATION DIVISION
1220 South St. Francis Dr.
Santa Fe, NM 87505

Form C-102
Revised August 1, 2011
Submit one copy to appropriate
District Office

☐ AMENDED REPORT

WELL LOCATION AND ACREAGE DEDICATION PLAT

¹ API Number	² Pool Code	³ Pool Name
⁴ Property Code	⁵ Property Name SILVER BULLET 16 SWD	
⁷ OGRID NO.	⁸ Operator Name MEWBOURNE OIL COMPANY	
	⁶ Well Number 1	⁹ Elevation 2929'

¹⁰ Surface Location

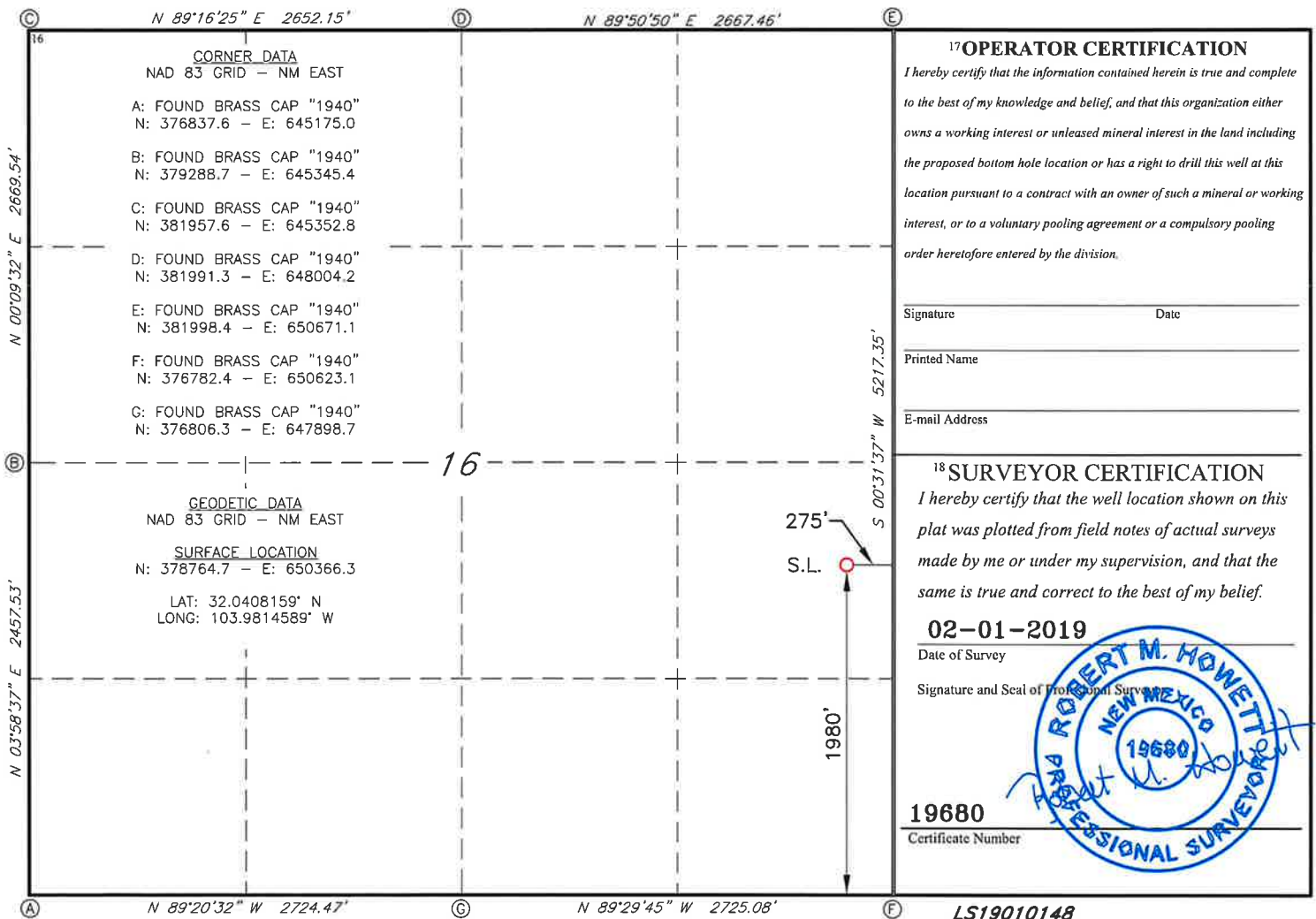
UL or lot no. I	Section 16	Township 26S	Range 29E	Lot Idn	Feet from the 1980	North/South line SOUTH	Feet From the 275	East/West line EAST	County EDDY
---------------------------	----------------------	------------------------	---------------------	---------	------------------------------	----------------------------------	-----------------------------	-------------------------------	-----------------------

¹¹ Bottom Hole Location If Different From Surface

UL or lot no.	Section	Township	Range	Lot Idn	Feet from the	North/South line	Feet from the	East/West line	County
---------------	---------	----------	-------	---------	---------------	------------------	---------------	----------------	--------

¹² Dedicated Acres	¹³ Joint or Infill	¹⁴ Consolidation Code	¹⁵ Order No.
-------------------------------	-------------------------------	----------------------------------	-------------------------

No allowable will be assigned to this completion until all interest have been consolidated or a non-standard unit has been approved by the division.



INJECTION WELL DATA SHEET

OPERATOR: Mewbourne Oil Company

WELL NAME & NUMBER: Silver Bullet 16 SWD #1

WELL LOCATION: 1980' FSL & 275' FEL

FOOTAGE LOCATION	I	16	26S	29E
	UNIT LETTER	SECTION	TOWNSHIP	RANGE

WELLBORE SCHEMATIC (See Attached)WELL CONSTRUCTION DATASurface Casing

Hole Size: 26" Casing Size: 20" (94 & 106.5 #) @ 550'

Cement with: 1055 sx (100% excess) Top of Cement: Surface

Intermediate Casing

Hole Size: 17 1/2" Casing Size: 13 3/8" (61 & 68#) @ 2,875'

Stage 1: 1360 sx (25% excess) Top of Cement: Surface (Calculated)

Production Casing

Hole Size: 12 1/4" Casing Size: 9 5/8" (40 & 43.5#) @ 9,925'

Stage 1: 1475 sx Top of Cement: Surface (Calculated)

Stage 2: 700 sx DV Tool @ 2,925' Top of Cement: Surface (Calculated)

Production Liner

Hole Size: 8 1/2" Casing Size: 7 5/8" (39#) Top @ 9,725' Bottom @ 15,350'

Cement with: 450 sx (25% excess) Top of Cement: 9,725' (Proposed: circulated to liner top)

TD @ 16,650'

Permitted Injection Interval 15,350' - 16650'

Listing of Notified Persons

Pecos River SWD #1 Application
1980' FSL & 275' FEL
Section 11, T22S, R27E, Eddy County, NM

Surface Owner (Same as Applicant)

Mewbourne Oil Company
P.O. Box 7698
Tyler, TX 75711

Offsetting Operators Or Leasehold Owners Within 1 Mile

Section 2, 22S, 27E

Devon Energy Production Company, LP
20 N. Broadway
Oklahoma City, OK 73102

Section 10, 22S, 27E

COG Operating LLC
600 W. Illinois Ave
Midland, TX 79710

Section 11, 22S, 27E

COG Production, LLC
600 W. Illinois Ave
Midland, TX 79701

Devon Energy Production Company, LP
20 N. Broadway
Oklahoma City, OK 73102

Mewbourne Oil Company
P.O. 7698
Tyler, TX 75711

Section 12, 22S, 27E

Legacy Reserves Operating, LP
303 W. Wall, Suite 160
Midland, TX 79701