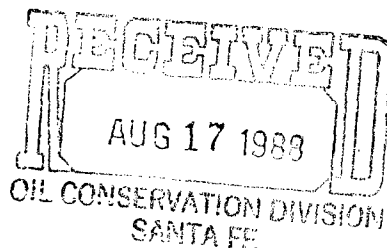




David L. Wacker  
Division Manager  
Production Department  
Hobbs Division  
North American Production

Conoco Inc.  
P.O. Box 460  
726 East Michigan  
Hobbs, NM 88240  
(505) 397-5800



August 11, 1988

Mr. William LeMay, Director  
State of New Mexico  
Energy & Minerals Department  
Oil Conservation Division  
P.O. Box 2088  
Santa Fe, NM 87504-2088

Dear Mr. LeMay:

Application to Downhole Commingle Lockhart B-13A No. 10, Unit B, Section 24, T21S, R37E, Lea County, New Mexico

Conoco Inc. respectfully requests approval to downhole commingle the Blinebry Oil & Gas, Drinkard, and the Wantz Abo pools in the subject well. This well is presently shut-in and is not economically producible without this downhole commingling.

Additional data relative to this commingling are listed below:

1. A lease plat is attached showing the location of this well.
2. C-116's are included providing a test for each zone.
3. A decline curve for each horizon is attached.
4. Estimated shut-in bottomhole pressures are 1325 psia for the Blinebry, 674 psia for the Drinkard, and 1166 psia for the Wantz Abo (estimated from static fluid levels). All zones require artificial lift to remove liquids.
5. Ownership of interest in all formations is the same.
6. The quality of crude is identical and commingling will not reduce the commercial value, since similar production on this lease is already being surface commingled. The Blinebry production is Tier 2 and the Drinkard and Wantz Abo production is Tier 3. All production is sweet oil. The value of the crude is as follows:

<u>Zone</u>	<u>Gravity</u>	<u>Value Per Barrel</u>
5878-6025 — Blinebry	39.4	\$16.47
6722-6928 — Drinkard	39.4	\$16.47
7089-7288 — Wantz Abo	39.4	\$16.47

Mr. William LeMay  
Page 2  
August 11, 1988

7. The following allocation percentages are suggested based upon the ratio of production from each zone:

	<u>Oil</u>	<u>Gas</u>	<u>Water</u>
Blinebry Oil & Gas	25%	24%	0%
Drinkard	8%	19%	86%
Wantz Abo	67%	57%	14%

8. By copy of this letter, we are notifying the Bureau of Land Management of this proposed commingling. Conoco is the only offset operator to this well.

Yours very truly,



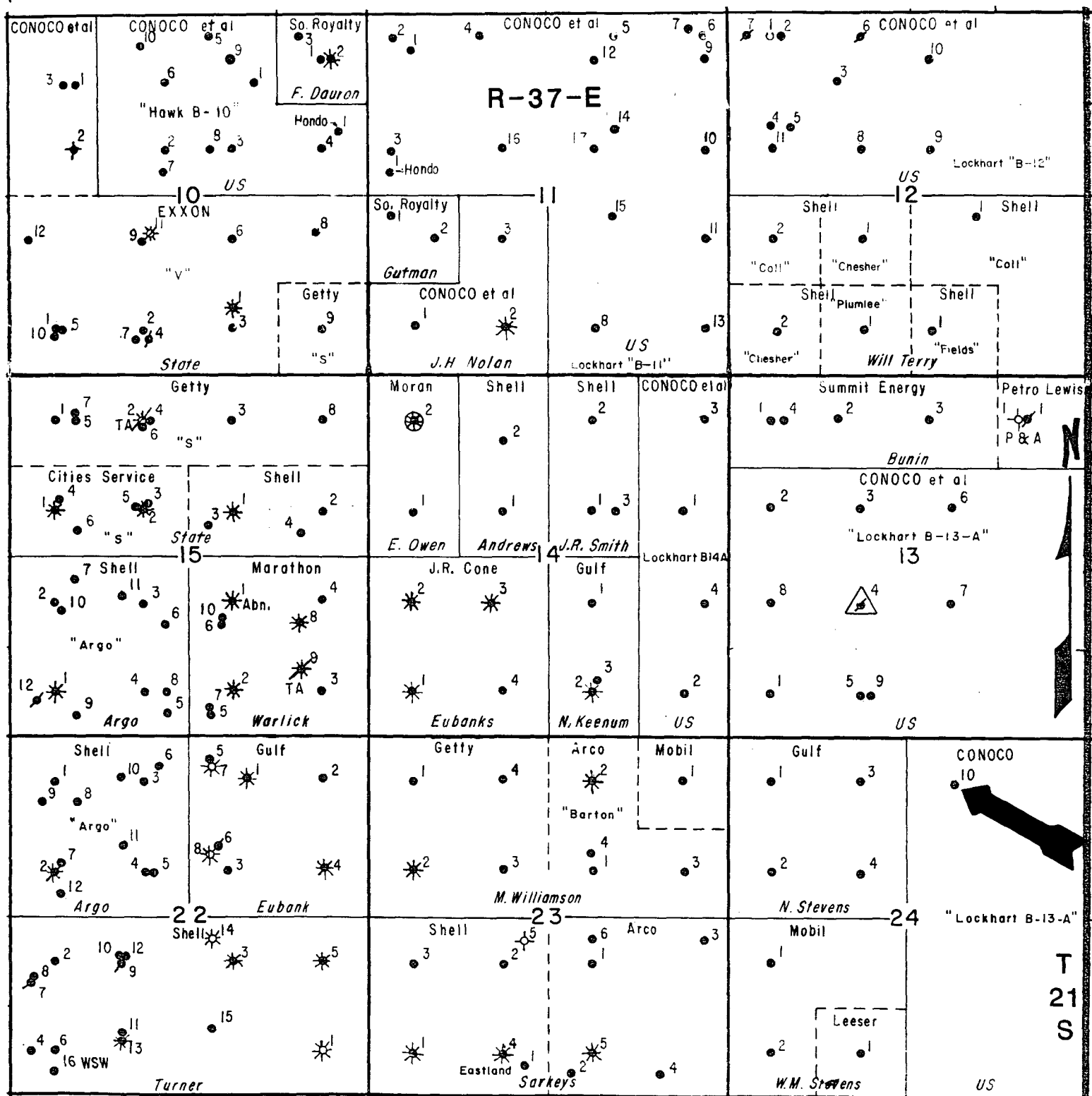
David L. Wacker  
Division Manager

COY:jd  
Enclosure

cc: BLM - Carlsbad  
NMOCD - Hobbs

Lockhart B-13A No. 10  
Offset Operators

Chevron USA  
P. O. Box 670  
Hobbs, NM 88240



**LOCKHART B-13-A & B-14-A LEASES**  
**Lea County, New Mexico**

C-116  
Revised 1-1-65

(Date)

C-116  
Revised 1-1-65

No well will be assigned an allowable greater than the amount of oil produced on the official test.

During gas-oil ratio test, each well shall be produced at a rate not exceeding the top unit allowable for the pool in which well is located by more than 25 percent. Operator is encouraged to take advantage of this 25 percent tolerance in order that well can be assigned increased allowables when authorized by the Commission.

Gas volumes must be reported in MCF measured at a pressure base of 15.025 psia and a temperature of 60° F. Specific gravity base will be 0.60.

Report casing pressure in lieu of tubing pressure for any well producing through casing.

Mail original and one copy of this report to the district office of the New Mexico Oil Conservation Commission in accordance with Rule 301 and appropriate pool rules.

I hereby certify that the above information is true and complete to the best of my knowledge and belief.

D. F. Finney  
(signature)

Administrative Supervisor

(Date)

**NEW MEXICO OIL CONSERVATION COMMISSION  
GAS-OIL RATIO TESTS**

C-116  
Revised 1-1-65

Operator <b>Conoco Inc.</b>		Pool <b>Wantz Abo</b>		County <b>Lea</b>												
Address <b>P. O. Box 460, Hobbs, NM 88240</b>		TYPE OF TEST - (X)		Completion <input type="checkbox"/> Special <input checked="" type="checkbox"/>												
LEASE NAME  <b>Lockhart B-13A</b>	WELL NO.  <b>10</b>	LOCATION				DATE OF TEST  <b>6/25/84</b>	STATUS  <b>P</b>	CHOKE SIZE  	TBG. PRESS.  	DAILY ALLOW-ABLE  	LENGTH OF TEST HOURS  <b>24</b>	PROD. DURING TEST				GAS - OIL RATIO CU. FT./BBL.  <b>1500</b>
		U	S	T	R							WATER BBL.S.	GRAV. OIL BBL.S.	OIL BBL.S.	GAS M.C.F.	
	<b>B</b>	<b>24</b>	<b>21S</b>	<b>37E</b>								<b>3</b>	<b>39.4</b>	<b>8</b>	<b>12</b>	

No well will be assigned an allowable greater than the amount of oil produced on the official test.


During gas-oil ratio test, each well shall be produced at a rate not exceeding the top unit allowable for the pool in which well is located by more than 25 percent. Operator is encouraged to take advantage of this 25 percent tolerance in order that well can be assigned increased allowables when authorized by the Commission.

Gas volumes must be reported in MCF measured at a pressure base of 15.025 psia and a temperature of 60° F. Specific gravity base will be 0.60.

Report casing pressure in lieu of tubing pressure for any well producing through casing.

Mail original and one copy of this report to the district office of the New Mexico Oil Conservation Commission in accordance with Rule 301 and appropriate pool rules.

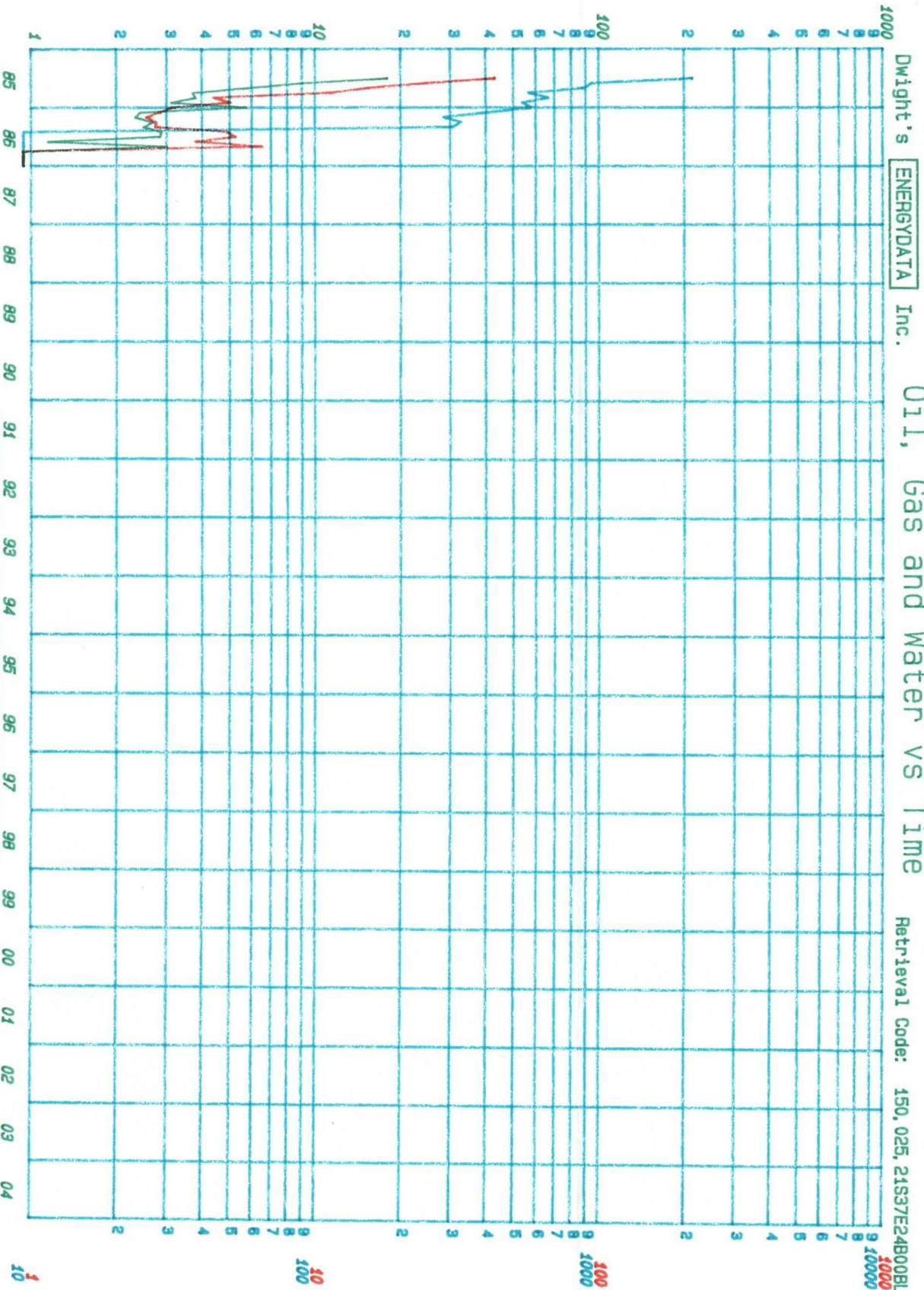
I hereby certify that the above information is true and complete to the best of my knowledge and belief.

  
 (Signature)  
**D. F. Finney**  
 Administrative Supervisor  
 (Title)

(Date)

# DAILY OIL PRODUCTION (BBL/DAY)

LEGEND	
OIL	—
GAS	—
WATER	—



Dwight's ENERGYDATA Inc.

Oil, Gas and Water vs Time

Retrieval Code: 150, 025, 21537E24B00BL

Lease:	LOCKHART B 13 A
Well #	000010
Operator:	CONOCO INC
Field:	BLINERY OIL AND GAS
Reservoir:	
County:	LEA NM
Location:	24 215 37E

BL

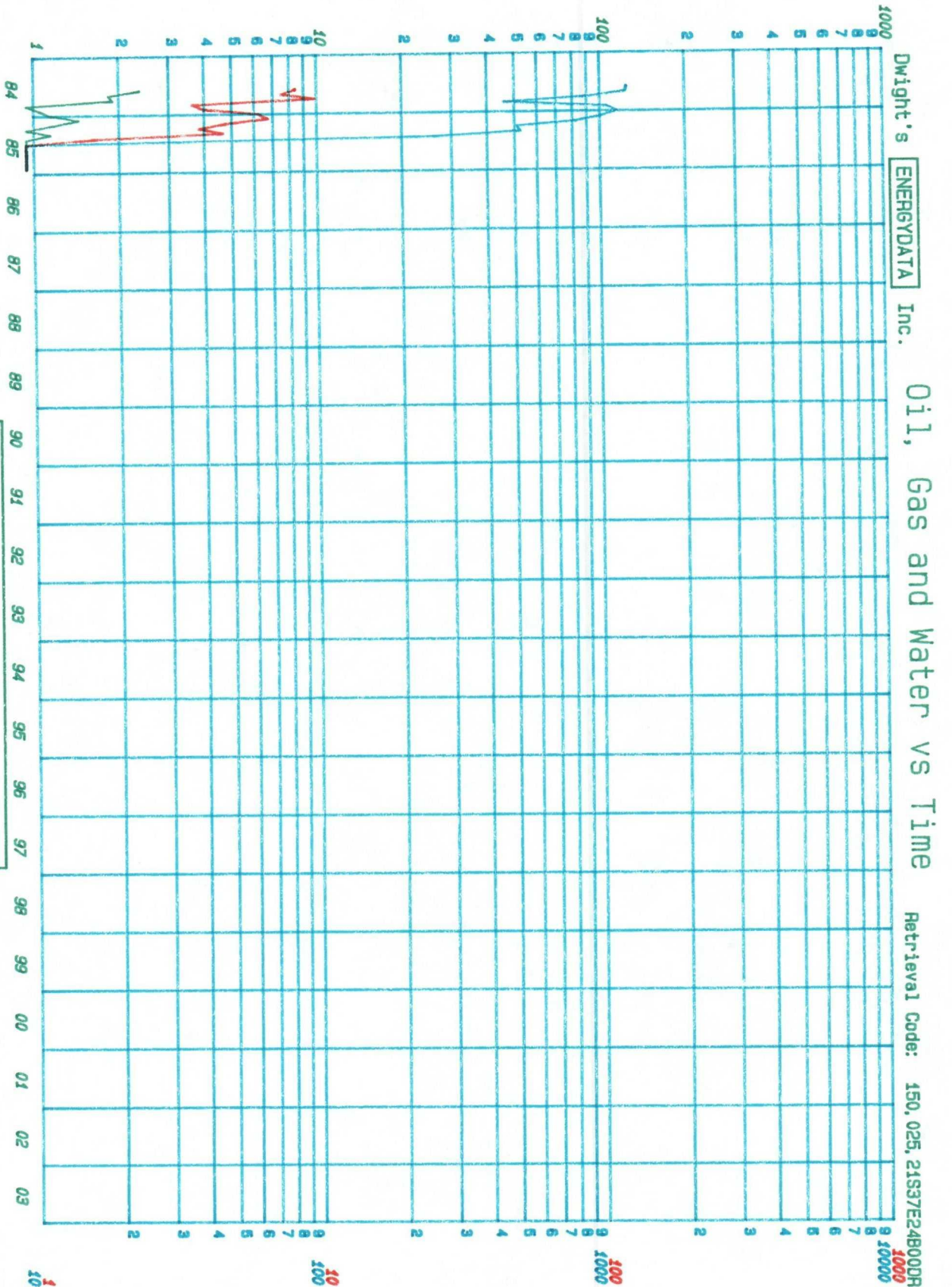
WATER (BBL/MO) DAILY GAS PRODUCTION (MCF/DAY)

Date: 07-22-88



# DAILY OIL PRODUCTION (BBL/DAY)

LEGEND	
OIL	—
GAS	—
WATER	—



WATER (BBL/MO) DAILY GAS PRODUCTION (MCF/DAY)

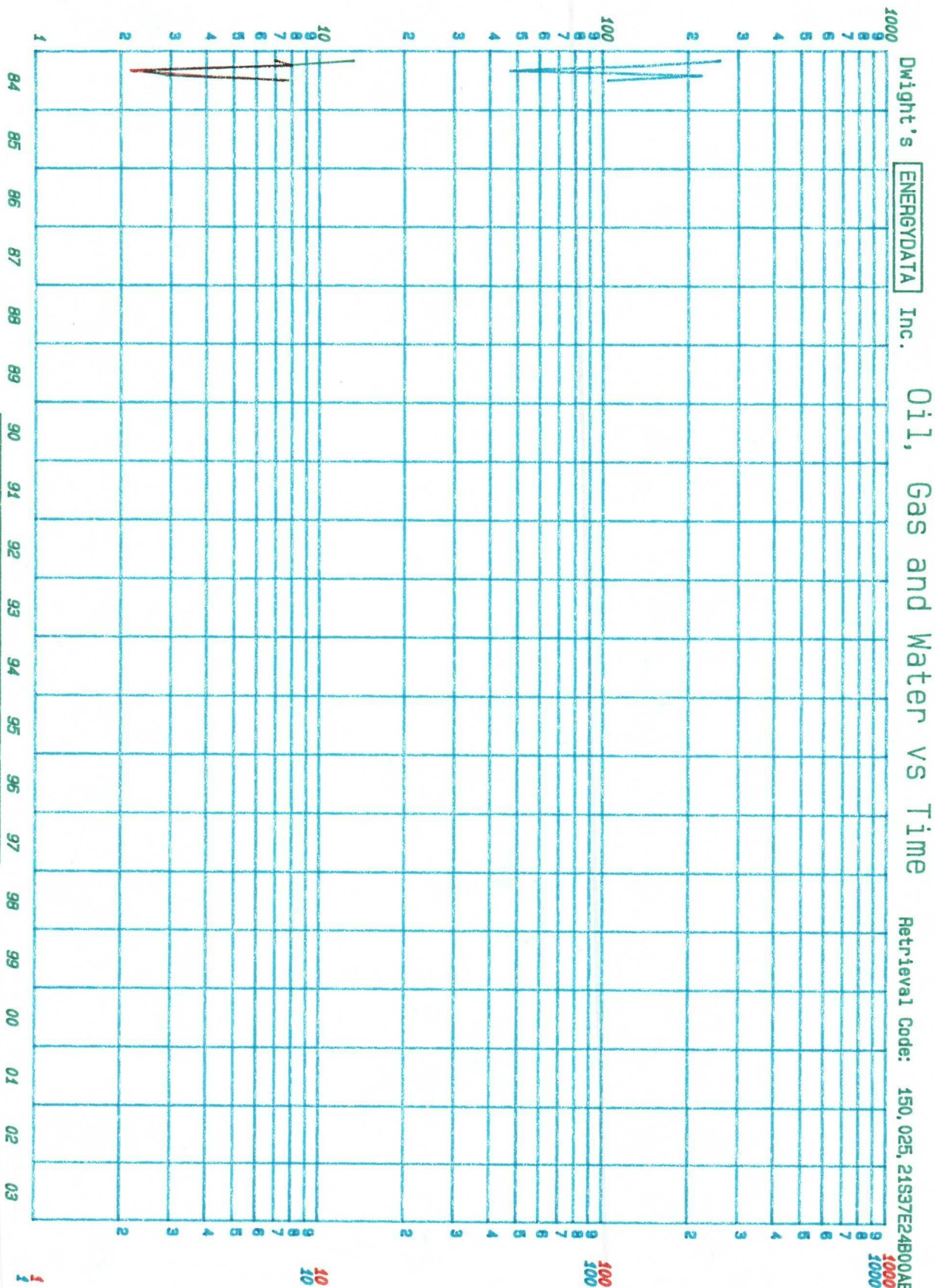
Lease: LOCKHART B 13 A  
 Well #: 000010  
 Operator: CONOCO INC  
 Field: DRINKARD  
 Reservoir: LEA  
 County: LEA  
 Location: 24 21S 37E NW

DR

Date: 07-22-88

# DAILY OIL PRODUCTION (BBL/DAY)

LEGEND	
OIL	—
GAS	—
WATER	—



Lease: LOCKHART B 13 A  
 Well # 000010  
 Operator: CONOCO INC  
 Field: WANTZ ABO  
 Reservoir:  
 County: LEA NM  
 Location: 24 21S 37E

Date: 07-22-98

WATER (BBL/MO) DAILY GAS PRODUCTION (MCF/DAY)



GARREY CARRUTHERS  
GOVERNOR

STATE OF NEW MEXICO  
**ENERGY AND MINERALS DEPARTMENT**  
OIL CONSERVATION DIVISION  
HOBBS DISTRICT OFFICE  
AUG 18 1968  
OIL CONSERVATION DIVISION  
SANTA FE

POST OFFICE BOX 1980  
HOBBS, NEW MEXICO 88241-1980  
(505) 393-6161

OIL CONSERVATION DIVISION  
P. O. BOX 2088  
SANTA FE, NEW MEXICO 87501

RE: Proposed:

MC	_____
DHC	<u>X</u> _____
NSL	_____
NSP	_____
SWD	_____
WFX	_____
PMX	_____

Gentlemen:

I have examined the application for the:

<u>Conoco Inc.</u>	<u>Lockhart B-13A #10-B</u>	<u>24-21-37</u>
Operator	Lease & Well No.	Unit S-T-R

and my recommendations are as follows:

*OK JS*

Yours very truly,

*Jerry Sexton*  
Jerry Sexton  
Supervisor, District 1

/ed