

CMD :
OG5SECT

UNGARD
INQUIRE LAND BY SECTION

04/11/03 14:04:37
OGOMES -TPSO
PAGE NO: 1

Sec : 06 Twp : 11S Rng : 35E Section Type : NORMAL

4 15.53 CS VA1315 0000 YATES PETROLEUM C 01/01/00	3 17.40 CS VA1315 0000 YATES PETROLEUM C 01/01/00	2 17.36 CS V04556 0000 CHI ENERGY INC 01/01/00	1 17.32 CS V04556 0000 CHI ENERGY INC 01/01/00
184.24			
5 35.64 CS VA1315 0000 YATES PETROLEUM C 01/01/00	K 40.00 CS VA1315 0000 YATES PETROLEUM C 01/01/00	J 40.00 CS V04556 0000 CHI ENERGY INC 01/01/00	I 40.00 CS V04556 0000 CHI ENERGY INC 01/01/00 A
6 35.67 CS VA1315 0000 YATES PETROLEUM C 01/01/00	N 40.00 CS VA1315 0000 YATES PETROLEUM C 01/01/00 A	O 40.00 CS V04556 0000 CHI ENERGY INC 01/01/00	P 40.00 CS V04556 0000 CHI ENERGY INC 01/01/00

PF01 HELP PF02 PF03 EXIT PF04 GOTO PF05 PF06
PF07 BKWD PF08 FWD PF09 PRINT PF10 SDIV PF11 PF12

District I
1625 N. French Dr., Hobbs, NM 88240
District II
811 South First, Artesia, NM 88210
District III
1000 Rio Brazos Road, Aztec, NM 87410
District IV
2040 South Pacheco, Santa Fe, NM 87505

State of New Mexico
Energy Minerals and Natural Resources

Oil Conservation Division
2040 South Pacheco
Santa Fe, NM 87505

Form C-101
Revised March 17, 1999

Submit to appropriate District Office
State Lease - 6 Copies
Fee Lease - 5 Copies

☐ AMENDED REPORT

APPLICATION FOR PERMIT TO DRILL, RE-ENTER, DEEPEN, PLUGBACK, OR ADD A ZONE

¹ Operator Name and Address Yates Petroleum Corporation 105 South Fourth Street Artesia, New Mexico 88210		² OGRID Number 025575
		³ API Number 30-025-34898
⁴ Property Code 25120	⁵ Property Name East Sand Springs Unit	⁶ Well No. 3

⁷Surface Location

UL or lot no.	Section	Township	Range	Lot 1/4	Feet from the	North/South line	Feet from the	East/West line	County
N	6	11-S	35-E		1000'	South	1400'	West	Lea

⁸Proposed Bottom Hole Location If Different From Surface

UL or lot no.	Section	Township	Range	Lot 1/4	Feet from the	North/South line	Feet from the	East/West line	County

⁹ Proposed Pool 1 Wildcat Mississippi	¹⁰ Proposed Pool 2
---	-------------------------------

¹¹ Work Type Code N	¹² Well Type Code R	¹³ Cable/Rotary Rotary	¹⁴ Lease Type Code S	¹⁵ Ground Level Elevation 4182'
¹⁶ Multiple No	¹⁷ Proposed Depth 12,500'	¹⁸ Formation Mississippi	¹⁹ Contractor Not determined	²⁰ Spud Date ASAP

²¹Proposed Casing and Cement Program

Hole Size	Casing Size	Casing weight/foot	Setting Depth	Sacks of Cement	Estimated TOC
17 1/2"	13 3/8"	48#	400'	400 sx	circulated
12 1/4"	9 5/8"	36 & 40#	4200'	1400 sx	circulated
8 3/4"	7"	26#	12,500'	600 sx	TOC-7300'

²² Describe the proposed program. If this application is to DEEPEN or PLUG BACK, give the data on the present productive zone and proposed new productive zone.

Describe the blowout prevention program, if any. Use additional sheets if necessary.

Yates Petroleum Corporation proposes to drill and test the Mississippi and intermediate formations. Approximately 400' of surface casing will be set and cement circulated. Intermediate casing will be cement circulated. If commercial production casing will be run and cemented back to approximately 7500', perforated and stimulated as needed for production.

MUD PROGRAM: 0'-400' FW Gel; 400'-4200' Cut brine to brine; 4200'-7800' Cut brine; 7800'-11500' Brine/S Gel/Diesel; 11500'-12500' Salt Gel/Starch.

BOPE PROGRAM: 5000# BOPE will be installed on 9 5/8" casing and tested daily.

²³ I hereby certify that the information given above is true and complete to the best of my knowledge and belief.

Signature:

Printed name: Ken Beardemphl

Title: Landman

Date:

January 13, 2000

Phone:

(505) 748-1471

OIL CONSERVATION DIVISION

Approved by:

Paul Knuts
Geologist

Title:

Approval Date:

JAN 21 1999

Expiration Date:

Conditions of Approval:

Attached ☐

Permit Expires 1 Year From Approval
Date Unless Drilling Unit

DISTRICT I
P.O. Box 1890, Hobbs, NM 88240

DISTRICT II
P.O. Box 88, Artesia, NM 88210

DISTRICT III
1000 Rio Grande Rd., Aztec, NM 87410

State of New Mexico
Energy, Minerals and Natural Resources Department

Form C-102
Revised February 18, 1994
Instruction on back
Submit to Appropriate District Office
State Lease - 4 Copies
Fee Lease - 3 Copies

OIL CONSERVATION DIVISION
P.O. Box 2088
Santa Fe, New Mexico 87504-2088

☐ AMENDED REPORT

WELL LOCATION AND ACREAGE DEDICATION PLAT

API Number 30-025-34898	Pool Code 97125	Pool Name Wildcat Mississippian
Property Code 25120	Property Name EAST SAND SPRINGS UNIT	Well Number 3
OCED No. 025575	Operator Name YATES PETROLEUM CORPORATION	Elevation 4186

Surface Location

TL or Lot No.	Section	Township	Range	Lot No.	Feet from the	North/South Line	Feet from the	East/West Line	County
N	6	11S	35E		1000	SOUTH	1400	WEST	LEA

Bottom Hole Location if Different From Surface

TL or Lot No.	Section	Township	Range	Lot No.	Feet from the	North/South Line	Feet from the	East/West Line	County
Dedicated Acres 320	Joint or InOH	Consolidation Code	Order No.						

**NO ALLOWABLE WILL BE ASSIGNED TO THIS COMPLETION UNTIL ALL INTERESTS HAVE BEEN CONSOLIDATED
OR A NON-STANDARD UNIT HAS BEEN APPROVED BY THE DIVISION**

LOT 4		LOT 3		LOT 2		LOT 1	
						<p>OPERATOR CERTIFICATION</p> <p>I hereby certify that the information contained herein is true and complete to the best of my knowledge and belief.</p> <p><i>Rusty Klein</i> Signature Rusty Klein Printed Name Operations Technician Title October 23, 2001 Date</p>	
						<p>SURVEYOR CERTIFICATION</p> <p>I hereby certify that the well location shown on this plat was plotted from field notes of actual surveys made by me or under my supervision, and that the same is true and correct to the best of my belief.</p> <p>1/25/2000 Date Surveyed Signature of Professional Surveyor 3640 Certificate No. Horizontal Line RLS 3640 EAST SPRINGS GENCO SURVEYING COMPANY</p>	

DISTRICT I
P.O. Box 1980, Hobbs, NM 88240

DISTRICT II
P.O. Drawer DD, Artesia, NM 88210

DISTRICT III
1000 Rio Brazos Rd., Aztec, NM 87410

OIL CONSERVATION DIVISION
P.O. Box 2088
Santa Fe, New Mexico 87504-2088

WELL API NO.	30-025-34898
5. Indicate Type of Lease	STATE <input checked="" type="checkbox"/> FEE <input type="checkbox"/>
6. State Oil & Gas Lease No.	V-1315
7. Lease Name or Unit Agreement Name	East Sand Springs Unit
8. Well No.	3
9. Pool name or Wildcat	Wildcat Mississippian
10. Elevation (Show whether DF, RKB, RT, GR, etc.)	
4182' GR	

SUNDARY NOTICES AND REPORTS ON WELLS
(DO NOT USE THIS FORM FOR PROPOSALS TO DRILL OR TO DEEPEN OR PLUG BACK TO A DIFFERENT RESERVOIR. USE "APPLICATION FOR PERMIT" (FORM C-101) FOR SUCH PROPOSALS.)

1. Type of Well:
OIL WELL ☐ GAS WELL ☒ OTHER

2. Name of Operator
YATES PETROLEUM CORPORATION

3. Address of Operator
105 South 4th St., Artesia, NM 88210

4. Well Location
Unit Letter N : 1000 Feet From The South Line and 1400 Feet From The West Line
Section 6 Township 11S Range 35E NMPM Lea County

11. Check Appropriate Box to Indicate Nature of Notice, Report, or Other Data

NOTICE OF INTENTION TO:

PERFORM REMEDIAL WORK ☐ PLUG AND ABANDON ☐
TEMPORARILY ABANDON ☐ CHANGE PLANS ☐
PULL OR ALTER CASING ☐
OTHER: ☐

SUBSEQUENT REPORT OF:

REMEDIAL WORK ☐ ALTERING CASING ☐
COMMENCE DRILLING OPNS. ☐ PLUG AND ABANDONMENT ☐
CASING TEST AND CEMENT JOB ☐
OTHER: Spud & conductor ☒

12. Describe Proposed or Completed Operations (Clearly state all pertinent details, and give pertinent dates, including estimated date of starting any proposed work) SEE RULE 1103.

Spudded a 26" hole with rat hole machine at 9:30 AM 3-26-2000. Drilled to 40'. Set 40' of 20" conductor pipe. Cemented to surface.

I hereby certify that the information above is true and complete to the best of my knowledge and belief.

SIGNATURE Rusty Klein TITLE Operations Technician DATE Aug. 28, 2000

TYPE OR PRINT NAME Rusty Klein

TELEPHONE NO. 505/748-1471

(This space for State Use)

APPROVED BY

TITLE

CONDITIONS OF APPROVAL, IF ANY:

SEP 8 2000

Submit 3 Copies To Appropriate District Office
District I
1625 N. French Dr., Hobbs, NM 88240
District II
811 South First, Artesia, NM 88210
District III
1000 Rio Brazos Rd., Aztec, NM 87410
District IV
1220 S. St. Francis Dr., Santa Fe, NM 87505

State of New Mexico
Energy, Minerals and Natural Resources

OIL CONSERVATION DIVISION
1220 South St. Francis Dr.
Santa Fe, NM 87505

Form C-103
Revised March 25, 1999

WELL API NO.
30-025-34898

5. Indicate Type of Lease
STATE ☒ FEE ☐

6. State Oil & Gas Lease No.
V-1315

7. Lease Name or Unit Agreement Name:

East Sand Springs Unit

7. Well No.
#3

8. Pool name or Wildcat
Wildcat Mississippian

SUNDRY NOTICES AND REPORTS ON WELLS
(DO NOT USE THIS FORM FOR PROPOSALS TO DRILL OR TO DEEPEN OR PLUG BACK TO A DIFFERENT RESERVOIR. USE "APPLICATION FOR PERMIT" (FORM C-101) FOR SUCH PROPOSALS.)

1. Type of Well:
Oil Well ☐ Gas Well ☒ Other ☐

2. Name of Operator
Yates Petroleum Corporation

3. Address of Operator
105 S. 4th Street Artesia, NM 88210

4. Well Location

Unit Letter **N** : **1000** feet from the **South** line and **1400** feet from the **West** line

Section **6** Township **11S** Range **35E** NMPM **Lea** County

10. Elevation (Show whether DR, RKB, RT, GR, etc.)
4182' GR

11. Check Appropriate Box to Indicate Nature of Notice, Report or Other Data
NOTICE OF INTENTION TO:

PERFORM REMEDIAL WORK ☐ PLUG AND ABANDON ☐
TEMPORARILY ABANDON ☐ CHANGE PLANS ☐
PULL OR ALTER CASING ☐ MULTIPLE COMPLETION ☐
OTHER: ☐

SUBSEQUENT REPORT OF:

REMEDIAL WORK ☐ ALTERING CASING ☐
COMMENCE DRILLING OPNS. ☒ PLUG AND ABANDONMENT ☐
CASING TEST AND CEMENT JOB ☐
OTHER: ☐

12. Describe proposed or completed operations. (Clearly state all pertinent details, and give pertinent dates, including estimated date of starting any proposed work). SEE RULE 1103. For Multiple Completions: Attach wellbore diagram of proposed completion or recompilation.

3/27/00 - Spudded at 9:30 AM with 26" conductor hole. Set 40' of 20" conductor.

12/14/00 - Move in and RU rotary tool.

12/15/00 - Resumed drilling at 11:00 PM with rotary tool.

12/16/00 - TD of 14-3/4" hole at 387'. Ran 9 jts (390.87') of 11-3/4" 42# H-40 ST&D casing set at 387'. Texas Pattern notched guide shoe set at 387'. Insert float set at 342'. Cemented with 300 sxs "C" 2% CaCl2 (yld 1.32, wt 14.8). PD 12:45 AM. Bumped plug to 250 psi, held OK. Circ 45 sxs.

12/17/00 - Drilled out at 12:00 PM. WOC 35 1/4 hrs. Reduced hole to 11" and resumed drilling.

12/23/00 - TD 11" hole at 4142'. Verbal permission obtained from Chris with NM OCD.

Ran 100 jts 8-5/8" J55 32# casing set at 4142'. Float shoe set at 4140.50'. Float collar set at 4098.49'. Cemented with 1100 sxs 35/65 Poz "C" with 5 pps salt, 1/4 pps celloflake (yld 2.08, wt 14.8) Tailed in 200 sxs "C" 2% CaCl2 (yld 1.32, wt 14.8). PD 11:45 PM. Bumped plug to 1700 psi, held OK. Circ 105 sxs. Shut down for Holidays.

See Attached

I hereby certify that the information above is true and complete to the best of my knowledge and belief.

SIGNATURE *Susan Herpin* TITLE **Engineering Technician** DATE **August 29, 2001**

Type or print name **Susan Herpin**

Telephone No. **505-748-1471**

(This space for State use)

APPROVED BY _____ TITLE _____ DATE _____
Conditions of approval, if any:

1625 N. French Dr., Hobbs, NM 88240
District II
811 South First, Artesia, NM 88210
District III
1000 Rio Brazos Rd., Aztec, NM 87410
District IV
1220 S. St. Francis Dr., Santa Fe, NM 87505

State of New Mexico
Energy, Minerals & Natural Resources

Oil Conservation Division
1220 South St. Francis Dr.
Santa Fe, NM 87505

Form C-104
Revised July 28, 2000

Submit to Appropriate District Office
5 Copies

I. REQUEST FOR ALLOWABLE AND AUTHORIZATION TO TRANSPORT

1 Operator name and Address Yates Petroleum Corporation 105 South Fourth Street Artesia NM 88210					2 OGRID Number 025575				
3 Reason for Filing Code/ Effective Date NW					6 Pool Code 97125				
4 Property Code 30-005-34898 025		5 Property Name East Sand Springs Unit			7 Well Number #3				
10 Surface Location									
11a or lot no. N	Section 6	Township 11S	Range 35E	Lot Idn	Feet from the 1000	North/South Line South	Feet from the 1400	East/West line West	County Lea
11 Bottom Hole Location									
12a or lot no.	Section	Township	Range	Lot Idn	Feet from the	North/South line	Feet from the	East/West line	County
13a Code S	13b Producing Method Code F	14 Gas Connection Date 4-06-2001		15 C-129 Permit Number		16 C-129 Effective Date		17 C-129 Expiration Date	

III. Oil and Gas Transporters

18 Transporter OGRID	19 Transporter Name & Address	20 POD	21 O/G	22 POD ULSTR Location and Description
138648	Amoco P/L Int Trucking 502 North West Ave Levelland, TX 79336	2829611	O	Unit N - Section 6-T11S-R35E
147831	Agave Energy Company 105 South 4th Street Artesia, NM 88210	2829612	G	Unit N - Section 6-T11S-R35E

IV. Produced Water

23 POD 2829613	24 POD ULSTR Location and Description Unit N - Section 6-T11S-R35E
--------------------------	--

V. Well Completion Data

25 Spud Date RH - 3/27/00 RT - 12/15/00	26 Ready Date 4/2/01	27 TD 13,460'	28 PBDT 13,416'	29 Perforations 12,370-12,778'	30 DHC, MC
31 Hole Size 26"		32 Casing & Tubing Size 20"		33 Depth Set 40'	
34 Sacks Cement cmt to surface		35 Sack Size 300 sxs circ		36 Sack Weight 1300 sxs	
37 Sack Weight 1550 sxs		38 Sack Weight 1550 sxs		39 Sack Weight 1550 sxs	

VI. Well Test Data

40 Date New Oil 4-02-2001	41 Gas Delivery Date 4-06-2001	42 Test Date 6-04-2001	43 Test Length 24 hrs.	44 Tbg. Pressure 1600#	45 Csg. Pressure Packer
46 Choke Size 14/64"	47 Oil 20	48 Water 0	49 Gas 12	50 AOF	51 Test Method Flow Test
52 I hereby certify that the rules of the Oil Conservation Division have been complied with and that the information given above is true and complete to the best of my knowledge and belief. Signature: <i>Susan Herpin</i> Printed name: Susan Herpin Title: Engineering Technician Date: August 29, 2001 Phone: 505-748-1471			OIL CONSERVATION DIVISION APPROVED BY LEON T. KAUTZ PETROLEUM ENGINEER Approval Date: DEC 5 2001		

District I
1625 N. French Dr., Hobbs, NM 88240
District II
111 South First, Artesia, NM 88210
District III
1000 Brazos Rd., Aztec, NM 87410
District IV
1220 S. St. Francis Dr., Santa Fe, NM 87505

Oil Conservation Division
1220 South St. Francis Dr.
Santa Fe, NM 87505

WELL AP. NO.

30-025-34898

5. Indicate Type of Lease

STATE ☒ FEE ☐

State Oil & Gas Lease No.

V-1315

WELL COMPLETION OR RECOMPLETION REPORT AND LOG

1a. Type of Well:

OIL WELL ☐ GAS WELL ☒ DRY ☐ OTHER ☐

b. Type of Completion:

NEW WORK PLUG DIFF.
WELL ☒ OVER ☐ DEEPEN ☐ BACK ☐ RESVR. ☐ OTHER ☐

2. Name of Operator

Yates Petroleum Corporation

3. Address of Operator

105 South 4th St., Artesia, NM 88210

7. Lease Name or Unit Agreement Name

East Sand Springs Unit

8. Well No.

#3

9. Pool name or Wildcat

Undesignated Mississippian

Wildcat

4. Well Location BAL: 1088/5 & 1649/W

Unit Letter N: 1000 Feet From The South Line and 1400 Feet From The West Line
Section 6 Township 11S Range 35E NMPM Lea County

10. Date Spudded
RH - 3/27/00
RT - 12/15/0011. Date T.D. Reached
2/23/0112. Date Compl. (Ready to Prod.)
4/2/0113. Elevations (DF& RKB, RT, GR, etc.)
4182'GR

14. Elev. Casinghead

15. Total Depth
13,460'16. Plug Back T.D.
13,416'

17. If Multiple Compl. How Many Zones?

18. Intervals Drilled By

Rotary Tools

Cable Tools

40-13,460'

19. Producing Interval(s), of this completion - Top, Bottom, Name

12,370 - 12,778' Mississippian

20. Was Directional Survey Made

No

21. Type Electric and Other Logs Run

CNL/LDC, Laterolog, Sonic

22. Was Well Cored

No

23. CASING RECORD (Report all strings set in well)

CASING SIZE	WEIGHT LB./FT.	DEPTH SET	HOLE SIZE	CEMENTING RECORD	AMOUNT PULLED
20"		40'	26"	cement to surface	
11-3/4"	42#	387'	14-3/4"	300 sxs circ	
8-5/8"	32#	4142'	11"	1300 sxs	
5-1/2"	17-20#	13,460'	7-7/8"	1550 sxs	

24. LINER RECORD

SIZE	TOP	BOTTOM	SACKS CEMENT	SCREEN	SIZE	DEPTH SET	PACKER SET
					2-7/8"	12,324'	12,332'

26. Perforation record (interval, size, and number)

See Attached

27. ACID, SHOT, FRACTURE, CEMENT, SQUEEZE, ETC.

DEPTH INTERVAL AMOUNT AND KIND MATERIAL USED

See Attached

28. PRODUCTION

Date First Production		Production Method (Flowing, gas lift, pumping - Size and type pump)				Well Status (Prod. or Shut-in)	
4/6/01		Flowing				Producing	
Date of Test	Hours Tested	Choke Size	Prod'n For Test Period	Oil - Bbl	Gas - MCF	Water - Bbl.	Gas - Oil Ratio
6/4/01	24	14/64"		20	12	0	
Flow Tubing Press.	Casing Pressure	Calculated 24-Hour Rate	Oil - Bbl.	Gas - MCF	Water - Bbl.	Oil Gravity - API - (Corr.)	
#1600	Packer		20	12	0		

29. Disposition of Gas - Sold, used for fuel, vented, etc.

Sold

Test Witnessed By

David Stevens

30. Attachments

Deviation Survey & Logs

I hereby certify that the information shown in this form is true and complete to the best of my knowledge and belief.

Signature

Name Duncan HeroinTitle Engineering TecDate August 12, 2007

INSTRUCTIONS

This form is to be filed with the appropriate District Office of the Division not later than 20 days after the completion of any newly-drilled or deepened well. It shall be accompanied by one copy of all electrical and radio-activity logs run on the well and a summary of all special tests conducted, including drill stem tests. All depths reported shall be measured depths. In the case of directionally drilled wells, true vertical depths shall also be reported. For multiple completions, items 25 through 29 shall be reported for each zone. The form is to be filed in quintuplicate except on state land, where six copies are required. See Rule 1105.

INDICATE FORMATION TOPS IN CONFORMANCE WITH GEOGRAPHICAL SECTION OF STATE

Southeastern New Mexico

Northwestern New Mexico

Anhy	T. Canyon	10,436'	T. Ojo Alamo	T. Penn. "B"
Salt Rustler 1826'	T. Strawn	10,878'	T. Kirtland-Fruitland	T. Penn. "C"
Salt	T. Atoka	11,466'	T. Pictured Cliffs	T. Penn. "D"
Yates 2860'	T. Miss	12,318	T. Cliff House	T. Leadville
7 Rivers	T. Devonian	13,342'	T. Menefee	T. Madison
Queen	T. Silurian		T. Point Lookout	T. Elbert
Grayburg	T. Montoya		T. Mancos	T. McCracken
San Andres 4172'	T. Simpson		T. Gallup	T. Ignacio Otzte
Glorieta 5590'	T. McKee		Base Greenhorn	T. Granite
Paddock	T. Ellenburger		T. Dakota	T.
Blainebry	T. Gr. Wash		T. Morrison	T.
Tubb	T. Delaware Sand		T. Todilto	T.
Drinkard	T. Bone Springs		T. Entrada	T.
Abo	T. Yeso		T. Wingate	T.
Wolfcamp 9246'	T. Ordovician		T. Chinle	T.
Penn Clastics	T. Morrow	12,073'	T. Permian	T.
Cisco 9948'	T. Woodford	13,272'	T. Penn "A"	T.

**OIL OR GAS SANDS
OR ZONES**

No. 1, from.....to..... No. 3, from.....to.....
No. 2, from.....to..... No. 4, from.....to.....

IMPORTANT WATER SANDS

Include data on rate of water inflow and elevation to which water rose in hole.

No. 1, from.....to.....feet.....
 No. 2, from.....to.....feet.....
 No. 3, from.....to.....feet.....

LITHOLOGY RECORD (Attach additional sheet if necessary)

From	To	Thickness In Feet	Lithology

From	To	Thickness In Feet	Lithology

Yates Petroleum Corporation
East Sand Springs Unit #3
API - 30-025-34898
Section 6 T11S R35E
Lea County, NM

26. Perforation record (interval, size and number)

Mississippian	12,666-12,680'	30 holes	.42" holes
	12,712-12,728'	34 holes	.42" holes
	12,766-12,778'	26 holes	.42" holes
	12,370-12,400'	62 holes	.42" holes
Morrow	12,074-12,096'	46 holes	.42" holes
	12,162-12,176'	30 holes	.42" holes
	12,188-12,190'	6 holes	.42" holes
	12,196-12,212'	34 holes	.42" holes
	12,220-12,224'	10 holes	.42" holes
	12,228-12,242'	30 holes	.42" holes

27. Acid, shot, fracture, cement, squeeze, etc.

Depth Interval	Amount and kind of material used
12,666-12,778'	Spot 3 bbls. 15% IC HCL Acidize with 4200 gals 15% IC HCL
12,370-12,400'	Spot 100 gals 15% IC HCL Acidized with 3000 gals 15% IC HCL
12,074-12,242'	Acidize with 4700 gals 20% IC HCL + ball sealers
12,074-12,096'	Acidized with 2000 gals gelled brine + 2000# rock salt + 2200 gals gelled acid

Yates Petroleum Corporation
East Sand Springs Unit #3
API - 30-025-34898
Section 6 T11S R35E
Lea County, NM

Results of DST #1 10,140-10,247' Bough A

Recovery: 90' Drilling mud

Sampler: 1700 cc mud

Pressures:

IHP	5144
IFP	150-194
ISIP	431
FFP	70-149
FSIP	430
FHP	5115

Times:

TO 15"; SI 60"

TO 60"; SI 240"

Results of DST #2 11,451-11,472' Atoka

Recovery: 10' gas cut mud, 800' of water cushion

Sampler: 1700 cc mud

Pressures:

IHP	6057
IFP	371-373
ISIP	1788
FFP	374-377
FSIP	2299
FHP	6035

Times:

TO 15"; SI 30"

TO 60"; SI 180"

Results of DST #3 12,075-12,164' Morrow

Recovery: 90' gas cut mud, 1364' of water cushion

Sampler: 1800 cc mud, .277 cu ft gas

Pressures:

IHP	6192
IFP	611-699
ISIP	1134
FFP	615-519
FSIP	735
FHP	6157

Times:

TO 15"; SI 60"

TO 60"; SI 120"

Results of Directional Survey

30-025-34898

**YATES PETROLEUM CORP
EAST SAND SPRINGS UNIT # 3**

	MD	N/S	E/W	VD
	12300	79.97	183.15	12296.60
TOP PERFS/OH	12370	82.43	190.19	12396.00
	12400	83.48	193.20	12396.00
	12700	90.72	219.37	12694.80
BOT PERFS/OH	12778	90.72	224.55	12772.57
	12800	92.28	226.01	12794.50

NEXT TO LAST	13300	90.46	246.59	13294.10
LAST READING	13387	89.03	247.94	13381.00
TD	13460	87.83	249.07	13453.92

Surface Location	1000	FS	1400	FW
Projected BHL	1088	FS	1649	FW
Location of				
Top Perfs	1082	FS	1590	FW
Bottom Perfs	1091	FS	1625	FW

SUMMARY of Subsurface Locations

Surface Location	N-6-11S-35E	1000	FS	1400	FW
Top Perfs	N-6-11S-35E	1082	FS	1590	FW
Bottom Perfs	N-6-11S-35E	1091	FS	1625	FW
Projected TD	N-6-11S-35E	1088	FS	1649	FW

Perforations are within the required stand-off for a 320 acre
non-standard proration unit comprising Lots 1,2,3,4 and
unit letters IJKLMNOP



Gyrodata Incorporated
3811 S. Co. Rd. 1285
Odessa, TX. 79765

915/561-8458
Fax: 915/563-7982

SURVEY REPORT
YATES PETROLEUM
EAST SAND SPRINGS ST UNIT #3
JSI PORTABLE MAST UNIT
LEA COUNTY, NEW MEXICO
MD1101GME415

NOVEMBER 12, 2001



A Gyrodata Directional Survey

for

Yates Petroleum

Location: JSI PORTABLE MAST UNIT, LEA COUNTY, NEW MEXICO
Well: EAST SAND SPRINGS STATE UNIT #3, 2-7/8" TUBING

Job Number: MD1101GME415

Run Date: 11/12/01 12:58:08 PM

Surveyor: Tom Morren

Calculation Method: MINIMUM CURVATURE

Survey Latitude: 33.389950 deg. N

Azimuth Correction:

Gyro: Bearings are Relative to True North

Vertical Section Calculated from Well Head Location

Closure Calculated from Well Head Location

Horizontal Coordinates Calculated from Well Head Location



A Gyrodata Directional Survey

Yates Petroleum

Well: EAST SAND SPRINGS STATE UNIT #3, 2-7/8" TUBING

Location: JSI PORTABLE MAST UNIT, LEA COUNTY, NEW MEXICO

Job Number: MD1101GME415

MEASURED DEPTH feet	INCL deg.	AZIMUTH deg.	BORE HOLE BEARING deg. min.	DOGLEG SEVERITY deg./ 100 ft.	VERTICAL DEPTH feet	CLOSURE DIST. AZIMUTH feet deg.	HORIZONTAL COORDINATES feet
0.0	0.00	0.00	N 0 0 E	0.00	0.0	0.0 0.0	0.00 N 0.00 E
0 - 13387 FT RATE GYROSCOPIC MULTISHOT SURVEY RUN INSIDE 2-7/8" TUBING							
ALL MEASURED DEPTHS AND COORDINATES REFERENCED TO YATES GROUND LEVEL							
100.0	0.34	328.37	N 31 38 W	0.34	100.0	0.3 328.4	0.25 N 0.15 W
200.0	0.23	351.59	N 8 24 W	0.16	200.0	0.8 334.2	0.70 N 0.34 W
300.0	0.21	353.33	N 6 40 W	0.02	300.0	1.1 340.1	1.08 N 0.39 W
400.0	0.42	49.12	N 49 7 E	0.34	400.0	1.5 354.8	1.50 N 0.14 W
500.0	0.51	54.82	N 54 49 E	0.10	500.0	2.0 14.1	1.99 N 0.50 E
600.0	0.57	63.96	N 63 58 E	0.11	600.0	2.8 28.0	2.46 N 1.31 E
700.0	0.61	59.74	N 59 44 E	0.06	700.0	3.7 37.0	2.95 N 2.22 E
800.0	0.61	62.70	N 62 42 E	0.03	800.0	4.7 42.3	3.46 N 3.15 E
900.0	0.49	64.52	N 64 31 E	0.12	900.0	5.6 45.9	3.89 N 4.00 E
1000.0	0.53	65.89	N 65 54 E	0.04	1000.0	6.4 48.5	4.26 N 4.81 E
1100.0	0.67	66.92	N 66 55 E	0.14	1100.0	7.4 51.0	4.68 N 5.77 E
1200.0	0.80	64.36	N 64 21 E	0.13	1200.0	8.7 53.1	5.21 N 6.94 E
1300.0	0.81	66.01	N 66 0 E	0.03	1299.9	10.1 54.8	5.80 N 8.21 E
1400.0	0.88	69.77	N 69 46 E	0.09	1399.9	11.5 56.5	6.35 N 9.58 E
1500.0	0.84	72.49	N 72 29 E	0.06	1499.9	12.9 58.1	6.83 N 11.00 E
1600.0	0.74	83.05	N 83 3 E	0.18	1599.9	14.2 60.0	7.13 N 12.33 E
1700.0	0.69	88.59	N 88 36 E	0.08	1699.9	15.4 62.0	7.23 N 13.57 E
1800.0	0.63	85.09	N 85 5 E	0.07	1799.9	16.4 63.7	7.29 N 14.73 E
1900.0	0.59	84.97	N 84 58 E	0.04	1899.9	17.4 65.0	7.38 N 15.79 E
2000.0	0.60	85.49	N 85 30 E	0.01	1999.9	18.4 66.1	7.47 N 16.83 E

A Gyrodata Directional Survey

Yates Petroleum

Well: EAST SAND SPRINGS STATE UNIT #3, 2-7/8" TUBING

Location: JSI PORTABLE MAST UNIT, LEA COUNTY, NEW MEXICO

Job Number: MD1101GME415

MEASURED DEPTH feet	INCL deg.	AZIMUTH deg.	BORE HOLE BEARING deg. min.	DOGLEG SEVERITY deg./ 100 ft.	VERTICAL DEPTH feet	CLOSURE DIST. AZIMUTH feet deg.	HORIZONTAL COORDINATES feet
2100.0	0.55	84.34	N 84 21 E	0.04	2099.9	19.4 67.0	7.55 N 17.83 E
2200.0	0.63	92.35	S 87 39 E	0.11	2199.9	20.3 68.1	7.58 N 18.85 E
2300.0	0.62	82.20	N 82 12 E	0.11	2299.9	21.4 69.1	7.63 N 19.94 E
2400.0	0.61	88.63	N 88 38 E	0.07	2399.9	22.4 69.8	7.72 N 21.02 E
2500.0	0.76	90.67	S 89 20 E	0.16	2499.9	23.5 70.8	7.72 N 22.21 E
2600.0	0.87	85.29	N 85 17 E	0.13	2599.8	24.9 71.8	7.78 N 23.64 E
2700.0	0.83	84.64	N 84 38 E	0.04	2699.8	26.3 72.5	7.91 N 25.12 E
2800.0	0.88	83.05	N 83 3 E	0.06	2799.8	27.8 73.1	8.07 N 26.61 E
2900.0	0.83	85.09	N 85 5 E	0.06	2899.8	29.3 73.7	8.22 N 28.10 E
3000.0	0.91	93.20	S 86 48 E	0.15	2999.8	30.7 74.4	8.24 N 29.61 E
3100.0	1.14	88.26	N 88 16 E	0.25	3099.8	32.5 75.3	8.23 N 31.40 E
3200.0	1.22	90.23	S 89 46 E	0.09	3199.8	34.5 76.1	8.25 N 33.45 E
3300.0	1.46	86.25	N 86 15 E	0.26	3299.7	36.7 76.9	8.33 N 35.79 E
3400.0	1.62	72.47	N 72 28 E	0.40	3399.7	39.4 77.0	8.84 N 38.41 E
3500.0	1.76	66.08	N 66 5 E	0.23	3499.7	42.3 76.5	9.89 N 41.15 E
3600.0	1.98	54.57	N 54 34 E	0.43	3599.6	45.4 75.3	11.51 N 43.96 E
3700.0	2.12	55.61	N 55 36 E	0.15	3699.5	48.8 73.9	13.56 N 46.89 E
3800.0	1.78	52.88	N 52 53 E	0.35	3799.5	52.0 72.6	15.54 N 49.66 E
3900.0	1.85	40.51	N 40 31 E	0.40	3899.4	54.9 71.2	17.71 N 51.95 E
4000.0	2.22	37.08	N 37 5 E	0.39	3999.4	57.9 69.3	20.48 N 54.17 E
4100.0	2.36	36.85	N 36 51 E	0.14	4099.3	61.3 67.3	23.68 N 56.57 E
4200.0	1.95	36.68	N 36 41 E	0.41	4199.2	64.6 65.6	26.69 N 58.83 E
4300.0	1.62	30.82	N 30 49 E	0.38	4299.2	67.3 64.2	29.27 N 60.57 E
4400.0	1.37	26.17	N 26 10 E	0.27	4399.1	69.4 63.0	31.55 N 61.81 E

A Gyrodata Directional Survey

Yates Petroleum

Well: EAST SAND SPRINGS STATE UNIT #3, 2-7/8" TUBING

Location: JSI PORTABLE MAST UNIT, LEA COUNTY, NEW MEXICO

Job Number: MD1101GME415

MEASURED DEPTH feet	INCL deg.	AZIMUTH deg.	BORE HOLE BEARING deg. min.	DOGLEG SEVERITY deg./ 100 ft.	VERTICAL DEPTH feet	CLOSURE DIST. AZIMUTH feet deg.	HORIZONTAL COORDINATES feet
4500.0	1.21	24.29	N 24 18 E	0.16	4499.1	71.2 61.9	33.59 N 62.78 E
4600.0	1.22	24.38	N 24 23 E	0.01	4599.1	72.9 60.8	35.52 N 63.65 E
4700.0	1.17	19.94	N 19 57 E	0.11	4699.1	74.5 59.8	37.45 N 64.44 E
4800.0	1.15	25.26	N 25 16 E	0.11	4799.0	76.2 58.9	39.32 N 65.22 E
4900.0	1.21	18.44	N 18 26 E	0.15	4899.0	77.8 58.0	41.24 N 65.98 E
5000.0	1.11	18.25	N 18 15 E	0.11	4999.0	79.4 57.1	43.15 N 66.62 E
5100.0	1.16	15.53	N 15 32 E	0.07	5099.0	80.9 56.2	45.04 N 67.19 E
5200.0	1.08	13.59	N 13 35 E	0.08	5199.0	82.4 55.3	46.93 N 67.68 E
5300.0	1.13	16.71	N 16 43 E	0.08	5298.9	83.9 54.4	48.80 N 68.19 E
5400.0	1.08	13.84	N 13 51 E	0.08	5398.9	85.4 53.6	50.66 N 68.70 E
5500.0	1.03	14.59	N 14 35 E	0.05	5498.9	86.8 52.8	52.45 N 69.15 E
5600.0	0.87	16.74	N 16 45 E	0.16	5598.9	88.1 52.2	54.05 N 69.60 E
5700.0	0.63	22.24	N 22 14 E	0.25	5698.9	89.2 51.7	55.29 N 70.02 E
5800.0	0.62	22.09	N 22 5 E	0.01	5798.9	90.2 51.4	56.30 N 70.44 E
5900.0	0.51	29.03	N 29 2 E	0.13	5898.9	91.1 51.1	57.19 N 70.86 E
6000.0	0.45	29.86	N 29 52 E	0.06	5998.9	91.8 50.9	57.92 N 71.27 E
6100.0	0.23	38.05	N 38 3 E	0.23	6098.9	92.4 50.8	58.41 N 71.58 E
6200.0	0.20	31.54	N 31 33 E	0.03	6198.9	92.8 50.7	58.72 N 71.80 E
6300.0	0.20	30.05	N 30 3 E	0.01	6298.9	93.1 50.6	59.02 N 71.98 E
6400.0	0.19	10.15	N 10 9 E	0.07	6398.9	93.4 50.5	59.34 N 72.10 E
6500.0	0.19	5.47	N 5 28 E	0.02	6498.9	93.6 50.4	59.67 N 72.14 E
6600.0	0.13	3.04	N 3 2 E	0.07	6598.9	93.8 50.3	59.95 N 72.16 E
6700.0	0.18	21.57	N 21 34 E	0.07	6698.9	94.0 50.2	60.21 N 72.23 E
6800.0	0.22	347.69	N 12 19 W	0.12	6798.9	94.3 50.0	60.54 N 72.25 E

A Gyrodata Directional Survey

Yates Petroleum

Well: EAST SAND SPRINGS STATE UNIT #3, 2-7/8" TUBING

Location: JSI PORTABLE MAST UNIT, LEA COUNTY, NEW MEXICO

Job Number: MD1101GME415

MEASURED DEPTH feet	INCL deg.	AZIMUTH deg.	BORE HOLE BEARING deg. min.	DOGLEG SEVERITY deg./ 100 ft.	VERTICAL DEPTH feet	CLOSURE DIST. AZIMUTH feet deg.	HORIZONTAL COORDINATES feet
6900.0	0.20	19.22	N 19 13 E	0.11	6898.9	94.5 49.9	60.89 N 72.26 E
7000.0	0.15	6.70	N 6 42 E	0.06	6998.9	94.7 49.8	61.18 N 72.34 E
7100.0	0.19	11.46	N 11 28 E	0.04	7098.9	95.0 49.7	61.48 N 72.38 E
7200.0	0.23	13.01	N 13 1 E	0.04	7198.9	95.3 49.5	61.83 N 72.46 E
7300.0	0.27	47.15	N 47 9 E	0.15	7298.9	95.7 49.4	62.19 N 72.68 E
7400.0	0.32	51.24	N 51 15 E	0.06	7398.9	96.2 49.4	62.52 N 73.07 E
7500.0	0.46	47.56	N 47 33 E	0.14	7498.9	96.8 49.4	62.97 N 73.58 E
7600.0	0.50	44.34	N 44 20 E	0.05	7598.9	97.7 49.4	63.55 N 74.19 E
7700.0	0.57	52.25	N 52 15 E	0.10	7698.9	98.6 49.4	64.17 N 74.88 E
7800.0	0.81	64.77	N 64 46 E	0.28	7798.8	99.8 49.5	64.77 N 75.91 E
7900.0	1.43	72.06	N 72 4 E	0.64	7898.8	101.6 49.9	65.46 N 77.73 E
8000.0	1.76	79.41	N 79 24 E	0.39	7998.8	104.1 50.6	66.12 N 80.43 E
8100.0	2.04	83.94	N 83 56 E	0.32	8098.7	107.0 51.5	66.59 N 83.71 E
8200.0	2.16	94.69	S 85 19 E	0.41	8198.7	109.9 52.7	66.63 N 87.36 E
8300.0	2.37	96.79	S 83 12 E	0.22	8298.6	112.8 54.0	66.23 N 91.29 E
8400.0	2.63	100.03	S 79 58 E	0.30	8398.5	115.9 55.5	65.59 N 95.60 E
8500.0	2.54	101.68	S 78 19 E	0.11	8498.4	119.2 57.1	64.74 N 100.03 E
8600.0	2.44	102.33	S 77 40 E	0.11	8598.3	122.3 58.5	63.83 N 104.29 E
8700.0	2.40	102.67	S 77 20 E	0.04	8698.2	125.3 59.9	62.92 N 108.41 E
8800.0	2.30	102.36	S 77 38 E	0.11	8798.1	128.4 61.1	62.03 N 112.41 E
8900.0	2.37	105.41	S 74 35 E	0.14	8898.0	131.4 62.3	61.05 N 116.36 E
9000.0	2.26	105.03	S 74 58 E	0.11	8998.0	134.4 63.5	59.99 N 120.25 E
9100.0	2.30	111.77	S 68 14 E	0.27	9097.9	137.2 64.7	58.74 N 124.02 E
9200.0	2.16	114.88	S 65 7 E	0.19	9197.8	139.8 65.9	57.20 N 127.59 E

A Gyrodata Directional Survey

Yates Petroleum

Well: EAST SAND SPRINGS STATE UNIT #3, 2-7/8" TUBING
Location: JSI PORTABLE MAST UNIT, LEA COUNTY, NEW MEXICO
Job Number: MD1101GME415

MEASURED DEPTH feet	INCL deg.	AZIMUTH deg.	BORE HOLE BEARING deg. min.	DOGLEG SEVERITY deg./ 100 ft.	VERTICAL DEPTH feet	CLOSURE DIST. AZIMUTH feet deg.	HORIZONTAL COORDINATES feet
9300.0	1.93	120.92	S 59 5 E	0.31	9297.7	142.0 67.0	55.55 N 130.74 E
9400.0	1.55	123.87	S 56 8 E	0.39	9397.7	143.8 68.0	53.93 N 133.30 E
9500.0	1.15	125.02	S 54 59 E	0.40	9497.7	145.1 68.7	52.60 N 135.25 E
9600.0	0.92	127.82	S 52 11 E	0.24	9597.7	146.1 69.3	51.53 N 136.70 E
9700.0	0.63	104.55	S 75 27 E	0.42	9697.6	147.0 69.7	50.90 N 137.87 E
9800.0	0.66	90.35	S 89 39 E	0.16	9797.6	148.0 69.9	50.76 N 138.98 E
9900.0	0.27	61.90	N 61 54 E	0.44	9897.6	148.7 70.0	50.87 N 139.76 E
10000.0	0.16	279.07	N 80 56 W	0.40	9997.6	148.8 70.0	51.00 N 139.83 E
10100.0	0.31	290.76	N 69 14 W	0.16	10097.6	148.5 69.9	51.11 N 139.45 E
10200.0	0.23	51.91	N 51 55 E	0.48	10197.6	148.5 69.8	51.34 N 139.35 E
10300.0	0.71	39.72	N 39 43 E	0.48	10297.6	149.2 69.6	51.94 N 139.91 E
10400.0	0.52	41.34	N 41 21 E	0.19	10397.6	150.2 69.4	52.75 N 140.60 E
10500.0	0.51	47.80	N 47 48 E	0.06	10497.6	151.0 69.3	53.39 N 141.23 E
10600.0	0.41	59.60	N 59 36 E	0.14	10597.6	151.7 69.2	53.87 N 141.86 E
10700.0	0.81	43.08	N 43 5 E	0.44	10697.6	152.7 69.1	54.56 N 142.65 E
10800.0	0.69	60.76	N 60 46 E	0.26	10797.6	154.0 68.9	55.37 N 143.66 E
10900.0	0.98	66.75	N 66 45 E	0.30	10897.6	155.4 68.9	56.01 N 144.97 E
11000.0	1.25	57.90	N 57 54 E	0.32	10997.6	157.3 68.8	56.92 N 146.68 E
11100.0	1.19	34.38	N 34 23 E	0.50	11097.6	159.3 68.5	58.35 N 148.19 E
11200.0	1.17	71.25	N 71 15 E	0.75	11197.5	161.1 68.3	59.54 N 149.74 E
11300.0	0.71	30.19	N 30 11 E	0.79	11297.5	162.6 68.2	60.40 N 151.02 E
11400.0	0.95	50.40	N 50 24 E	0.37	11397.5	163.9 68.0	61.46 N 151.96 E
11500.0	1.55	43.72	N 43 43 E	0.62	11497.5	165.9 67.7	62.96 N 153.53 E
11600.0	1.49	51.21	N 51 12 E	0.21	11597.4	168.4 67.4	64.75 N 155.48 E

A Gyrodata Directional Survey

Yates Petroleum

Well: EAST SAND SPRINGS STATE UNIT #3, 2-7/8" TUBING

Location: JSI PORTABLE MAST UNIT, LEA COUNTY, NEW MEXICO

Job Number: MD1101GME415

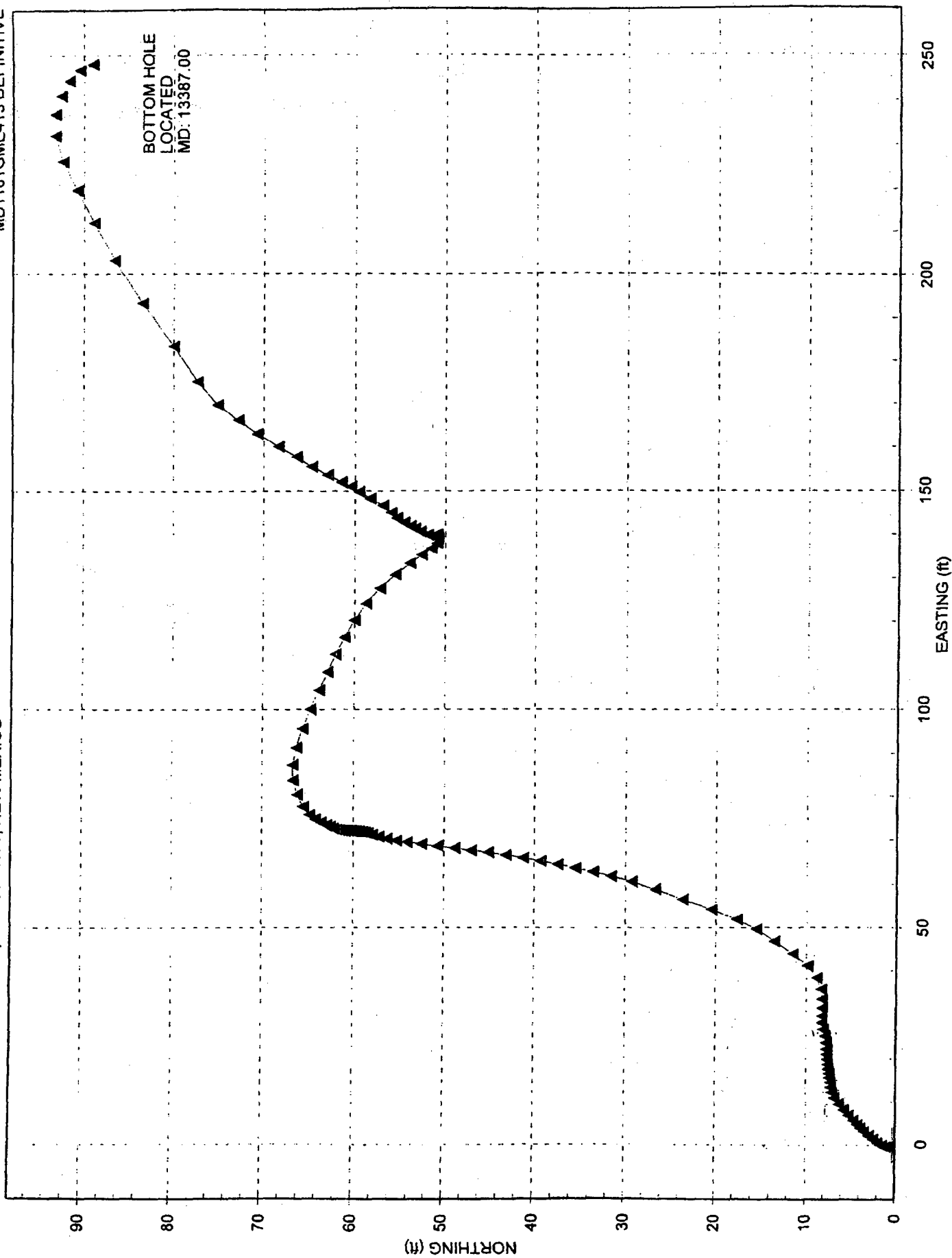
MEASURED DEPTH feet	INCL deg.	AZIMUTH deg.	BORE HOLE BEARING deg. min.	DOGLEG SEVERITY deg./ 100 ft.	VERTICAL DEPTH feet	CLOSURE DIST. AZIMUTH feet deg.	HORIZONTAL COORDINATES feet
11700.0	1.61	55.95	N 55 57 E	0.17	11697.4	171.0 67.2	66.35 N 157.65 E
11800.0	2.05	46.75	N 46 45 E	0.53	11797.4	174.1 66.9	68.36 N 160.11 E
11900.0	2.18	53.57	N 53 34 E	0.29	11897.3	177.6 66.5	70.71 N 162.95 E
12000.0	2.17	59.97	N 59 58 E	0.24	11997.2	181.4 66.3	72.79 N 166.12 E
12100.0	2.65	54.11	N 54 7 E	0.53	12097.1	185.5 66.1	75.09 N 169.63 E
12200.0	4.05	75.71	N 75 42 E	1.87	12197.0	191.2 66.2	77.31 N 174.92 E
12300.0	5.88	69.63	N 69 38 E	1.90	12296.6	199.8 66.4	79.97 N 183.15 E
12400.0	6.34	71.74	N 71 44 E	0.50	12396.0	210.5 66.6	83.48 N 193.20 E
12500.0	5.59	73.98	N 73 59 E	0.79	12495.5	220.8 66.9	86.56 N 203.12 E
12600.0	4.75	76.50	N 76 30 E	0.87	12595.1	229.7 67.2	88.87 N 211.82 E
12700.0	4.17	75.94	N 75 57 E	0.58	12694.8	237.4 67.5	90.72 N 219.37 E
12800.0	3.65	77.71	N 77 43 E	0.53	12794.5	244.1 67.8	92.28 N 226.01 E
12900.0	3.03	85.65	N 85 39 E	0.77	12894.4	249.8 68.1	93.16 N 231.76 E
13000.0	2.59	95.37	S 84 38 E	0.65	12994.2	254.3 68.5	93.14 N 236.64 E
13100.0	2.32	102.99	S 77 1 E	0.42	13094.1	258.0 69.0	92.48 N 240.87 E
13200.0	1.68	106.75	S 73 15 E	0.65	13194.1	260.9 69.4	91.60 N 244.25 E
13300.0	1.36	127.52	S 52 29 E	0.64	13294.1	262.7 69.9	90.46 N 246.59 E
13387.0	1.27	146.26	S 33 45 E	0.50	13381.0	263.4 70.2	89.03 N 247.94 E

Final Station Closure: Distance: 263.44 ft Az: 70.25 deg.

Yates Petroleum

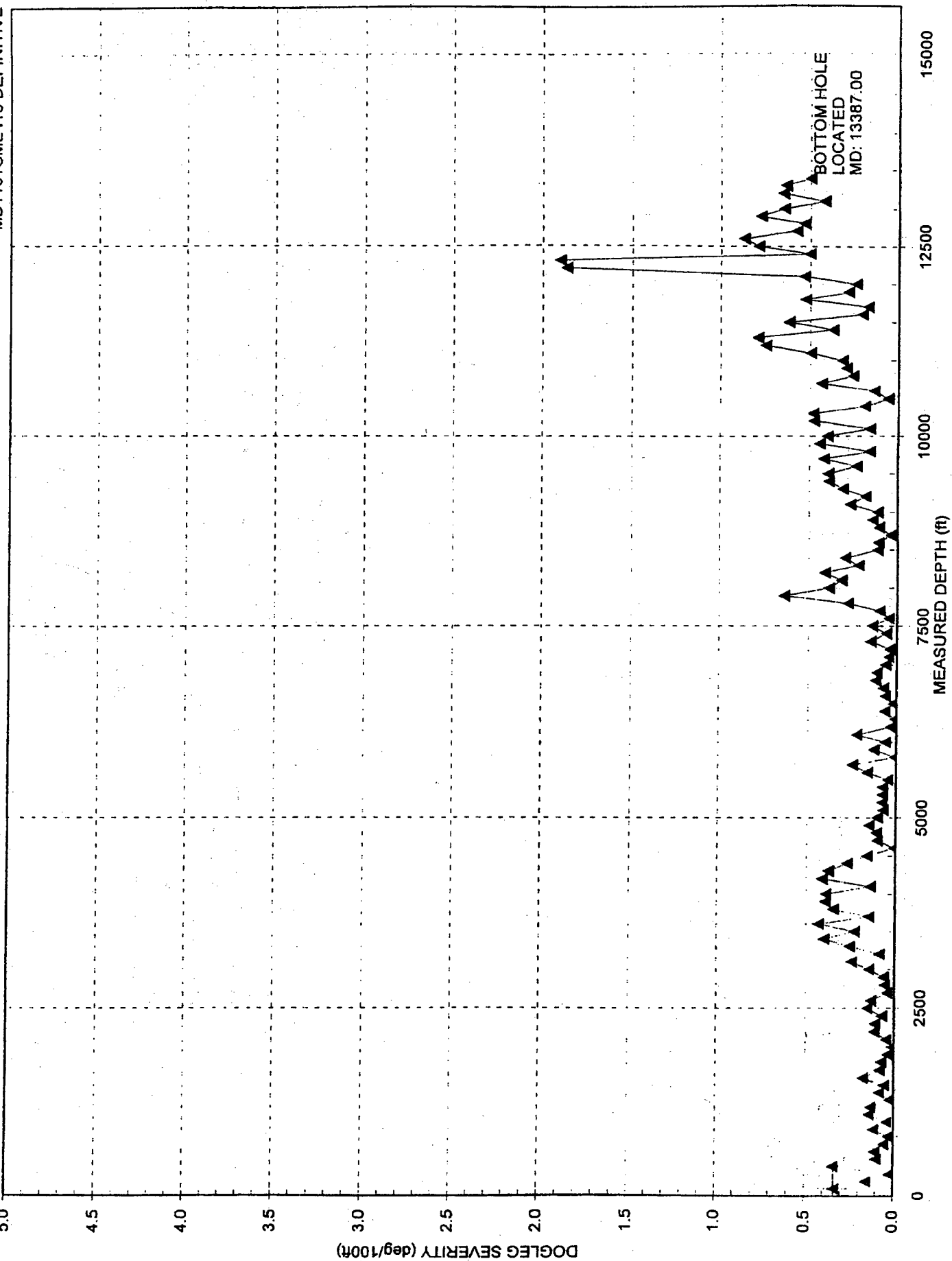
Well: EAST SAND SPRINGS STATE UNIT #3 2-7/8" TUBING
Location: JSI PORTABLE MAST UNIT, LEA COUNTY, NEW MEXICO

Gyrodatta, Inc.
MD1101GME415 DEFINITIVE



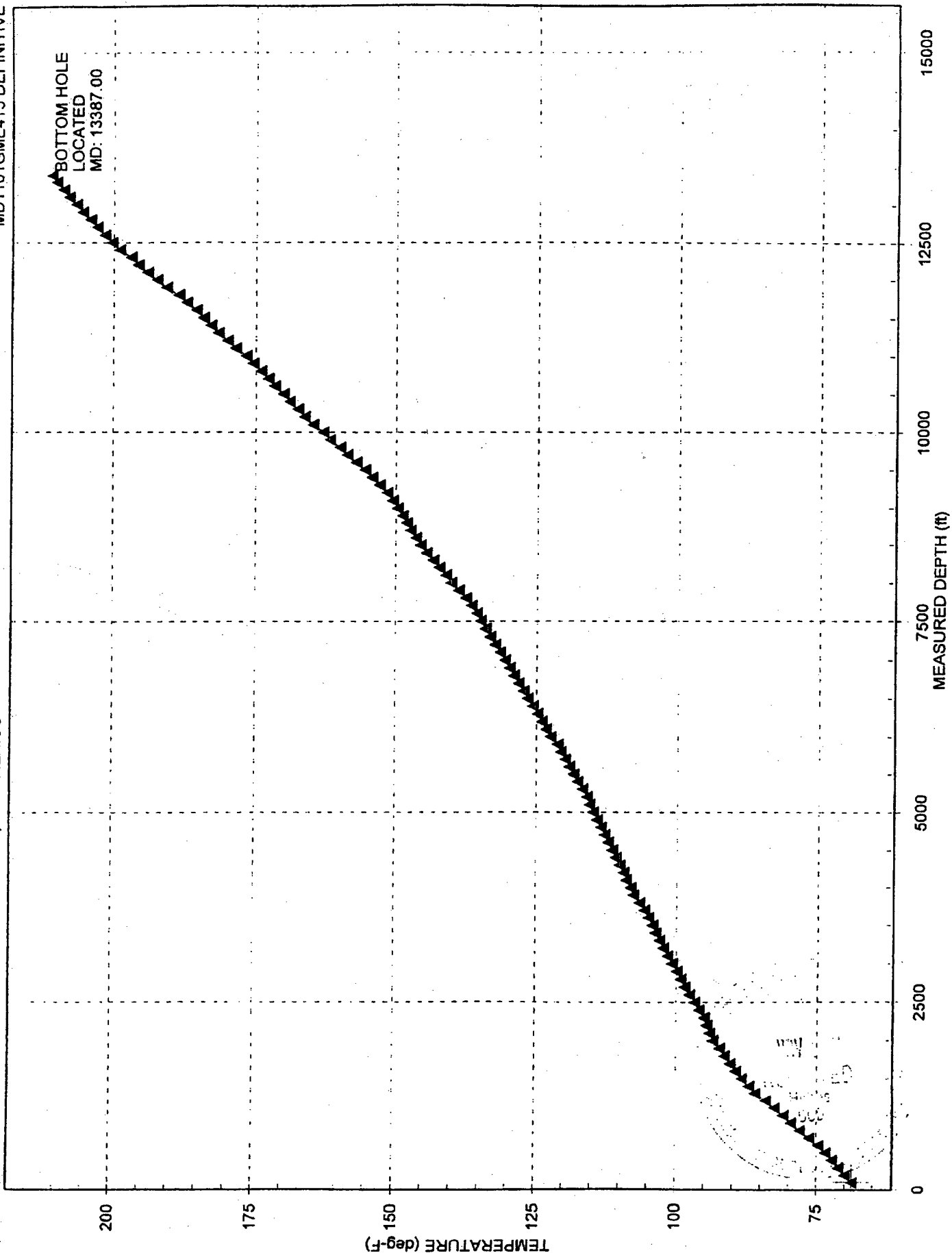
Yates Petroleum
Well: EAST SAND SPRINGS STATE UNIT #3 2-7/8" TUBING
Location: JSI PORTABLE MAST UNIT, LEA COUNTY, NEW MEXICO

MD1101GME415 DEFINITIVE
Gyrodata, Inc.



Yates Petroleum
Well: EAST SAND SPRINGS STATE UNIT #3 2-7/8" TUBING
Location: JSI PORTABLE MAST UNIT, LEA COUNTY, NEW MEXICO

Gyrodatta, Inc.
MD1101GME415 DEFINITIVE





PATTERSON DRILLING COMPANY LP

A LIMITED PARTNERSHIP

410 North Loraine Street • Midland, Texas 79701

(915) 682-9401 • Fax (915) 682-1565

March 8, 2001

Yates Petroleum Corporation
105 S. 4th St.
Artesia, NM 88210

Re: Deviation Report
East Sand Springs Unit #3
Sec. 6, T-11-S, R-35-E

- N - 1000/S & 1400/W
30-025-34898

Gentlemen:

The following is a deviation survey on the above-referenced well located in Lea County, New Mexico.

339' - 1.00	4142' - 2.50	8169' - 2.00	10468' - 0.75	12476' - 6.00
816' - 1.00	4204' - 2.75	8640' - 2.75	10935' - 0.75	12539' - 6.00
1117' - 0.50	4484' - 1.50	8732' - 2.50	11472' - 1.50	12632' - 5.00
1395' - 0.75	4766' - 1.50	8823' - 2.75	11822' - 2.00	12693' - 4.50
1886' - 0.75	5053' - 1.50	8916' - 2.75	11927' - 3.00	12754' - 3.75
2256' - 1.00	5529' - 1.00	9008' - 2.50	12021' - 3.25	13003' - 2.75
2680' - 1.00	6028' - 0.75	9098' - 2.50	12114' - 4.00	13285' - 1.75
3153' - 1.25	6516' - 0.25	9191' - 2.00	12200' - 4.50	13460' - 1.75
3630' - 2.25	6988' - 0.25	9253' - 2.25	12291' - 6.25	
3725' - 1.50	7463' - 0.25	9477' - 1.25	12354' - 7.00	
3915' - 1.75	7655' - 1.00	9968' - 0.50	12415' - 6.50	

Sincerely,

Treva Forrester

STATE OF TEXAS)
COUNTY OF MIDLAND)

The foregoing was acknowledged before me this 8th day of March, 2001 by Treva Forrester.

MY COMMISSION EXPIRES:

NOTARY PUBLIC

REFERENCE SHEET FOR
UNDESIGNATED WELLS

	M	N	O
07-11 C	X		

1. Date: 09/04/2001	
2. Type of Well:	
Oil: <input type="checkbox"/>	Gas: <input checked="" type="checkbox"/>
3. County:	

4. Operator: >> YATES PETROLEUM CORP		API NUMBER: 30 - 025 - 34898	
5. Address of Operator >> 105 S 4TH STREET			
>> ARTESIA NM 88210			
6. Lease name or Unit Agreement Name >> EAST SAND SPRINGS UNIT			7. Well Number # - 3
8. Well Location			
Unit Letter: N	1000	feet from the S line and 1400	feet from the W line
Section 6	Township 11S	Range 35E	TD: 13460

9. Completion Date: 04/02/2001	11. Perfs Top 12370	Bottom 12778
10. Name of Producing Formation(s) MISSISSIPPIAN	12. Open Hole Casing shoe	PBTD or TD Open Hole

13. C-123 Filed: Y <input type="checkbox"/> N <input checked="" type="checkbox"/>	Date	15. Name of Pool Requested: WILDCAT S113506N;MISS (GAS)	Pool ID num 97125
16. Remarks: DEDICATED ACREAGE = SEC 6 :LOTS 3,4,5,6 AND E/2SW/4 184.24 ACRES			
320 ACRES REQUIRED			

TO BE COMPLETED BY DISTRICT GEOLOGIST		
17. Action taken NEW POOL	18. Pool Name SAND SPRINGS;MISSISSIPPIAN (GAS)	Pool ID num 97125
T 11 S, R 35 E		
SEC 6: E/2SW/4 & LOTS 3,4,5,6		

19. Advertised for HEARING:		20. Case Number
21. Name of pool for which was advertised. SAND SPRINGS;MISSISSIPPIAN (GAS)		Pool ID num 97125
22. Placed in Pool SAND SPRINGS;MISSISSIPPIAN (GAS)		23. By order number R-

Submit 3 Copies To Appropriate District Office
District I
1625 N. French Dr., Hobbs, NM 88240
District II
1301 W. Grand Ave., Artesia, NM 88210
District III
1000 Rio Brazos Rd., Aztec, NM 87410
District IV
1220 S. St. Francis Dr., Santa Fe, NM 87505

State of New Mexico
Energy, Minerals and Natural Resources

Form C-103
May 27, 2004

OIL CONSERVATION DIVISION
1220 South St. Francis Dr.
Santa Fe, NM 87505

WELL API NO. 30-025-34898
5. Indicate Type of Lease STATE <input checked="" type="checkbox"/> FEE <input type="checkbox"/>
6. State Oil & Gas Lease No. V-1315
7. Lease Name or Unit Agreement Name East Sand Springs BFZ State
8. Well Number 3
9. OGRID Number 025575
10. Pool name or Wildcat Wildcat Mississippian

SUNDRY NOTICES AND REPORTS ON WELLS
(DO NOT USE THIS FORM FOR PROPOSALS TO DRILL OR TO DEEPEN OR PLUG BACK TO A DIFFERENT RESERVOIR. USE "APPLICATION FOR PERMIT" (FORM C-101) FOR SUCH PROPOSALS.)

1. Type of Well: Oil Well ☐ Gas Well ☒ Other

2. Name of Operator
Yates Petroleum Corporation

3. Address of Operator
105 S. 4th Street, Artesia, NM 88210

4. Well Location
Unit Letter N : 1000 feet from the South line and 1400 feet from the West line
Section 6 Township 11S Range 35E NMPM Lea County

11. Elevation (Show whether DR, RKB, RT, GR, etc.)
4182' GR

Pit or Below-grade Tank Application ☐ or Closure ☐

Pit type _____ Depth to Groundwater _____ Distance from nearest fresh water well _____ Distance from nearest surface water _____

Pit Liner Thickness: _____ mil Below-Grade Tank: Volume _____ bbls; Construction Material _____

12. Check Appropriate Box to Indicate Nature of Notice, Report or Other Data

NOTICE OF INTENTION TO:

PERFORM REMEDIAL WORK ☐ PLUG AND ABANDON ☐
TEMPORARILY ABANDON ☐ CHANGE PLANS ☐
PULL OR ALTER CASING ☐ MULTIPLE COMPL ☐

OTHER: ☐

SUBSEQUENT REPORT OF:

REMEDIAL WORK ☐ ALTERING CASING ☐
COMMENCE DRILLING OPNS. ☐ P & A ☐
CASING/CEMENT JOB ☐

OTHER: ☒ Name Change

13. Describe proposed or completed operations. (Clearly state all pertinent details, and give pertinent dates, including estimated date of starting any proposed work). SEE RULE 1103. For Multiple Completions: Attach wellbore diagram of proposed completion or recompletion.

Effective December 7, 2004, Yates Petroleum Corporation requests to change the wellname as follows:

From: East Sand Springs Unit #3
To: East Sand Springs BFZ State #3

OPER. OGRID NO. 25575
PROPERTY NO. 34507
POOL CODE _____
EXP. DATE _____
API NO. _____

I hereby certify that the information above is true and complete to the best of my knowledge and belief. I further certify that any pit or below-grade tank has been/will be constructed or closed according to NMOCD guidelines ☐, a general permit ☐ or an (attached) alternative OCD-approved plan ☐.

SIGNATURE Stormi Davis TITLE Regulatory Compliance Technician DATE 12-22-04

Type or print name Stormi Davis E-mail address: _____ Telephone No. 505-748-1471

For State Use Only

APPROVED BY: Harry W. Wink TITLE OCD FIELD REPRESENTATIVE II/STAFF MANAGER DATE JAN 03 2005
Conditions of Approval (if any): _____

District I

1625 N. French Dr., Hobbs, NM 88240

District II

1301 W. Grand Avenue, Artesia, NM 88210

District III

1000 Rio Brazos Rd., Aztec, NM 87410

District IV

1220 S. St. Francis Dr., Santa Fe, NM 87505

State of New Mexico
Energy, Minerals & Natural Resources Department

OIL CONSERVATION DIVISION

1220 South St. Francis Dr.

Santa Fe, NM 87505

Form C-102

Revised June 10, 2003

Submit to Appropriate District Office

State Lease - 4 Copies

Fee Lease - 3 Copies

☒ AMENDED REPORT

WELL LOCATION AND ACREAGE DEDICATION PLAT

¹ API Number 30-025-34898		² Pool Code	³ Pool Name Wildcat Mississippian
⁴ Property Code 34507	⁵ Property Name East Sand Springs BFZ State		⁶ Well Number 3
⁷ OGRID No. 025575	⁸ Operator Name Yates Petroleum Corporation		⁹ Elevation 4182' GR

¹⁰ Surface Location

UL or lot no.	Section	Township	Range	Lot Idn	Feet from the	North/South line	Feet from the	East/West line	County
N	6	11S	35E	N	1000	South	1400	West	Lea

¹¹ Bottom Hole Location If Different From Surface

UL or lot no.	Section	Township	Range	Lot Idn	Feet from the	North/South line	Feet from the	East/West line	County
---------------	---------	----------	-------	---------	---------------	------------------	---------------	----------------	--------

¹² Dedicated Acres 184.24	¹³ Joint or Infill	¹⁴ Consolidation Code	¹⁵ Order No.
--	-------------------------------	----------------------------------	-------------------------

NO ALLOWABLE WILL BE ASSIGNED TO THIS COMPLETION UNTIL ALL INTERESTS HAVE BEEN CONSOLIDATED OR A NON-STANDARD UNIT HAS BEEN APPROVED BY THE DIVISION

¹⁶ 				¹⁷ OPERATOR CERTIFICATION I hereby certify that the information contained herein is true and complete to the best of my knowledge and belief. Signature Stormi Davis Printed Name Regulatory Compliance Technician Title and E-mail Address Date 3-7-05	
				¹⁸ SURVEYOR CERTIFICATION I hereby certify that the well location shown on this plat was plotted from field notes of actual surveys made by me or under my supervision, and that the same is true and correct to the best of my belief. Date of Survey Signature and Seal of Professional Surveyor: Certificate Number	

HOME | PETROLEUM DATA | NEWS | MARKETPLACE | SOFTWARE | SPONSORS | LINKS | CONTACT

[PTTC](#)
[PRRC](#)
[NM-TECH](#)
[NMBGMR](#)



[NYMEX LS Crude](#) \$52.40
[Navajo WTXI](#) \$50.00
[Henry Hub](#) \$7.22
 Updated 4/11/2005

[GENERAL](#) | [COUNTY](#) | [OPERATOR](#) | [POOL](#) | [LOCATION](#) | [OCD LOG & WELL FILES](#)

View Production Data

In Internet Explorer, right click and select "Save Target As..."
In Netscape, right click and select "Save Link As..."

Download: [HTTP](#)

Well: EAST SAND SPRINGS BFZ STATE **No.:** 003
Operator: YATES PETROLEUM CORPORATION [[NM SLO data](#)]
API: 3002534898 **Township:** 11.0S **Range:** 35E
Section: 6 **Unit:** N
Land Type: S **County:** Lea
Pools associated:

- [SAND SPRINGS;MISSISSIPPIAN \(GAS\)](#) **Total Acreage:** 184.24 **Completion:** 1 [Summary of Production](#)
- [Show All](#)

Year: 2001

Pool Name: SAND SPRINGS;MISSISSIPPIAN (GAS)

Month	Oil(BBLS)	Gas(MCF)	Water(BBLS)	Days Produced
January	0	0	0	0
February	0	0	0	0
March	0	0	0	0
April	31	810	11	2
May	0	810	0	31
June	44	450	0	4
July	12	216	3	2
August	30	96	0	3
September	0	30	0	1
October	12	161	0	5
November	11	325	3	4

December	30	305	18	4
----------	----	-----	----	---

Year: 2002

Pool Name: SAND SPRINGS;MISSISSIPPIAN (GAS)

Month	Oil(BBLS)	Gas(MCF)	Water(BBLS)	Days Produced
January	0	487	0	5
February	0	275	0	8
March	39	3192	0	8
April	3	1463	14	22
May	0	536	33	6
June	0	126	0	3
July	0	216	0	5
August	0	122	0	1
September	0	189	0	3
October	48	153	12	3
November	0	57	0	3
December	0	63	0	4

Year: 2003

Pool Name: SAND SPRINGS;MISSISSIPPIAN (GAS)

Month	Oil(BBLS)	Gas(MCF)	Water(BBLS)	Days Produced
January	0	104	0	3
February	2	132	0	5
March	34	236	12	5
April	0	124	0	1
May	0	334	3	4
June	0	128	0	1
July	0	100	0	3
August	0	95	0	2
September	0	84	0	1
October	0	51	0	3
November	0	28	0	1
December	0	0	0	0

Year: 2004

Pool Name: SAND SPRINGS;MISSISSIPPIAN (GAS)

Month	Oil(BBLS)	Gas(MCF)	Water(BBLS)	Days Produced
January	0	65	0	2
February	0	41	0	2
March	0	110	0	4
April				

	0	23	0	2
May	0	383	0	2
June	0	78	0	3
July	0	249	0	2
August	0	194	0	2
September	0	125	0	1
October	0	61	0	1
November	0	19	0	7
December	36	3348	0	14

Page last updated 07/22/2004. Webmaster gotech_prcc@yahoo.com

STATE OF NEW MEXICO
ENERGY, MINERALS AND NATURAL RESOURCES DEPARTMENT
OIL CONSERVATION DIVISION

IN THE MATTER OF THE HEARING
CALLED BY THE OIL CONSERVATION
DIVISION FOR THE PURPOSE OF
CONSIDERING:

*See Also Order No. R-11728-A
R-11728-B*

CASE NO. 12793
Order No. R-11728

APPLICATION OF THE OIL CONSERVATION
DIVISION FOR AN ORDER CREATING,
CONTRACTING VERTICAL LIMITS, AND
EXTENDING HORIZONTAL LIMITS OF
CERTAIN POOLS IN CHAVES AND LEA
COUNTIES, NEW MEXICO.

ORDER OF THE DIVISION

BY THE DIVISION:

This case came on for hearing at 8:15 a.m. on February 7, 2002, at Santa Fe, New Mexico, before Examiner David R. Catanach.

NOW, on this 20th day of February, 2002, the Division Director, having considered the testimony, the record, and the recommendations of the Examiner,

FINDS THAT:

(1) Due public notice has been given, and the Division has jurisdiction of this case and its subject matter.

(2) There is need for the creation of a new pool in Lea County, New Mexico, for the production of gas from the Strawn formation, bearing the designation of Corbin-Strawn Gas Pool. The Corbin-Strawn Gas Pool was discovered by the EOG Resources Inc. Corbin 18 Federal Com. Well No. 2 located in Unit O of Section 18, Township 18 South, Range 33 East, NMPM, which was completed in the Strawn formation on April 17, 2001. The top of the perforations is at 12,212 feet.

(3) There is need for the creation of a new pool in Lea County, New Mexico, for the production of oil from the Delaware formation, bearing the designation of North Diamondtail-Delaware Pool. The North Diamondtail-Delaware Pool was discovered by the Pogo Producing Company Aracanga Federal Well No. 1

located in Unit O of Section 4, Township 23 South, Range 32 East, NMPM, which was completed in the Delaware formation on August 17, 2000. The top of the perforations is at 8,596 feet.

(4) There is need for the creation of a new pool in Lea County, New Mexico, for the production of gas from the Mississippian formation, bearing the designation of Eight Mile Draw-Mississippian Gas Pool. The Eight Mile Draw-Mississippian Gas Pool was discovered by the Yates Petroleum Corporation Comet AUC State Well No. 1 located in Unit O of Section 23, Township 11 South, Range 34 East, NMPM, which was completed in the Mississippian formation on March 30, 2001. The top of the perforations is at 12,152 feet.

(5) There is need for the creation of a new pool in Lea County, New Mexico, for the production of oil from the Wolfcamp formation, bearing the designation of North Feather-Wolfcamp Pool. The North Feather-Wolfcamp Pool was discovered by the Yates Petroleum Corporation Wings AUT State Well No. 1 located in Unit M of Section 17, Township 15 South, Range 32 East, NMPM, which was completed in the Wolfcamp formation on July 20, 2001. The top of the perforations is at 9,808 feet.

(6) There is need for the creation of a new pool in Lea County, New Mexico, for the production of gas from the Morrow formation, bearing the designation of Four Lakes-Morrow Gas Pool. The Four Lakes-Morrow Gas Pool was discovered by the Yates Petroleum Corporation Indigo State Unit Well No. 1 located in Unit A of Section 7, Township 12 South, Range 35 East, NMPM, which was completed in the Morrow formation on December 15, 2000. The top of the perforations is at 12,368 feet.

(7) There is need for the creation of a new pool in Lea County, New Mexico, for the production of gas from the Morrow formation, bearing the designation of North Morton-Morrow Gas Pool. The North Morton-Morrow Gas Pool was discovered by the Yates Petroleum Corporation North Papalotes State Unit Well No. 1 located in Unit A of Section 3, Township 14 South, Range 34 East, NMPM, which was completed in the Morrow formation on June 19, 2001. The top of the perforations is at 13,476 feet.

(8) There is need for the creation of a new pool in Lea County, New Mexico, for the production of gas from the Mississippian formation, bearing the designation of Sand Springs-Mississippian Gas Pool. The Sand Springs-Mississippian Gas Pool was discovered by the Yates Petroleum Corporation East Sand Springs Unit Well No. 3 located in Unit N of Section 6, Township 11 South, Range 35 East, NMPM, which was completed in the Mississippian formation on April 2, 2001. The top of the perforations is at 12,370 feet.

(9) There is need for the creation of a new pool in Chaves County, New Mexico, for the production of gas from the Atoka-Morrow formation, bearing the

designation of East Tobac-Atoka-Morrow Gas Pool. The East Tobac-Atoka-Morrow Gas Pool was discovered by the Yates Petroleum Corporation Tres Canal State Unit Well No. 1 located in Unit K of Section 26, Township 8 South, Range 33 East, NMPM, which was completed in the Atoka-Morrow formation on March 7, 2001. The top of the perforations is at 10,516 feet.

(10) There is need for the creation of a new pool in Lea County, New Mexico, for the production of gas from the Atoka formation, bearing the designation of Townsend-Atoka Gas Pool. The Townsend-Atoka Gas Pool was discovered by the Nadel & Gussman Permian LLC. E. L. Harrod Well No. 1 located in Unit K of Section 5, Township 16 South, Range 35 East, NMPM, which was completed in the Atoka formation on July 27, 2001. The top of the perforations is at 12,586 feet.

(11) There is need for the creation of a new pool in Lea County, New Mexico, for the production of gas from the Atoka formation, bearing the designation of Wilson-Atoka Gas Pool. The Wilson-Atoka Gas Pool was discovered by the Maynard Oil Company Wilson Deep Unit Well No. 2-Y located in Unit D of Section 13, Township 21 South, Range 34 East, NMPM, which was completed in the Atoka formation on September 19, 2001. The top of the perforations is at 12,090 feet.

(12) There is need for the creation of a new pool in Lea County, New Mexico, for the production of gas from the Morrow formation, bearing the designation of X-4 Ranch-Morrow Gas Pool. The X-4 Ranch-Morrow Gas Pool was discovered by the Yates Petroleum Corporation Hytech AUM State Well No. 1 located in Unit M of Section 2, Township 10 South, Range 34 East, NMPM, which was completed in the Morrow formation on February 20, 2001. The top of the perforations is at 11,706 feet.

(13) There is need for the contraction of the vertical limits of the North Morton-Permo Pennsylvanian Pool in Lea County, New Mexico, to include only the Wolfcamp, Cisco, Canyon and Strawn formations and the redesignation of the pool as the North Morton-Permo Upper Pennsylvanian Pool.

(14) There is need for the contraction of the vertical limits of the Tobac-Pennsylvanian Pool in Chaves County, New Mexico, to include only the Cisco, Canyon and Strawn formations and the redesignation of the pool as the Tobac-Upper Pennsylvanian Pool.

(15) There is need for certain extensions to the Antelope Ridge-Atoka Gas Pool, the South Antelope Ridge-Cherry Canyon Pool, the South Big Dog-Strawn Pool, the Blinebry Oil and Gas Pool, the Bootleg Ridge-Morrow Gas Pool, the North Eidson-Morrow Gas Pool, the Southwest Eunice-San Andres Pool, the East Fowler-Ellenburger Pool, the North Hardy-Strawn Pool, the North Hardy-Tubb-Drinkard Pool, the Kemnitz-Cisco Pool, the Kemnitz-Lower Wolfcamp Pool, the Northeast Lovington-Upper Pennsylvanian Pool, the North Lovington-Wolfcamp Pool, the East Lusk-Morrow Gas Pool, the North Lusk-Morrow Gas Pool, the Nadine-Drinkard-Abo

Pool, the West Osudo-Morrow Gas Pool, the Penrose Skelly-Grayburg Pool, the South Quail Ridge-Yates Pool, the Querecho Plains-Queen Associated Pool, the Shoe Bar-Atoka Gas Pool, the North Shoe Bar-Atoka Gas Pool, the South Shoe Bar-Morrow Gas Pool, the North Shoe Bar-Strawn Pool, the Teas-Bone Spring Pool, the Teas-Delaware Pool, the North Townsend-Mississippian Gas Pool, the Townsend-Morrow Gas Pool, the Trinity-Wolfcamp Pool, the North Vacuum-Atoka-Morrow Gas Pool, the Vacuum-Blinebry Pool, the Wantz-Abo Pool, the Weir-Blinebry Pool, the Wilson-Morrow Gas Pool, the South Wilson-Pennsylvanian Gas Pool, and the North Young-Bone Spring Pool, all in Lea County, New Mexico; and the West Cato-San Andres Gas Pool in Chaves County, New Mexico.

IT IS THEREFORE ORDERED THAT:

(a) A new pool in Lea County, New Mexico classified as a gas pool for Strawn production is hereby created and designated as the Corbin-Strawn Gas Pool, consisting of the following described area:

TOWNSHIP 18 SOUTH, RANGE 33 EAST, NMPM

Section 18: S/2

(b) A new pool in Lea County, New Mexico classified as an oil pool for Delaware production is hereby created and designated as the North Diamondtail-Delaware Pool, consisting of the following described area:

TOWNSHIP 23 SOUTH, RANGE 32 EAST, NMPM

Section 4: SE/4

(c) A new pool in Lea County, New Mexico classified as a gas pool for Mississippian production is hereby created and designated as the Eight Mile Draw-Mississippian Gas Pool, consisting of the following described area:

TOWNSHIP 11 SOUTH, RANGE 34 EAST, NMPM

Section 23: S/2

(d) A new pool in Lea County, New Mexico classified as an oil pool for Wolfcamp production is hereby created and designated as the North Feather-Wolfcamp Pool, consisting of the following described area:

TOWNSHIP 15 SOUTH, RANGE 32 EAST, NMPM

Section 17: SW/4

(e) A new pool in Lea County, New Mexico classified as a gas pool for Morrow production is hereby created and designated as the Four Lakes-Morrow Gas Pool, consisting of the following described area:

TOWNSHIP 12 SOUTH, RANGE 35 EAST, NMPM

Section 7: E/2

(f) A new pool in Lea County, New Mexico classified as a gas pool for Morrow production is hereby created and designated as the North Morton-Morrow Gas Pool, consisting of the following described area:

TOWNSHIP 14 SOUTH, RANGE 34 EAST, NMPM

Section 36: N/2

(g) A new pool in Lea County, New Mexico classified as a gas pool for Mississippian production is hereby created and designated as the Sand Springs-Mississippian Gas Pool, consisting of the following described area:

TOWNSHIP 11 SOUTH, RANGE 35 EAST, NMPM

Section 6: E/2 SW/4 and Lots, 3, 4, 5 and 6

(h) A new pool in Chaves County, New Mexico classified as a gas pool for Atoka-Morrow production is hereby created and designated as the East Tobac-Atoka-Morrow Gas Pool, consisting of the following described area:

TOWNSHIP 8 SOUTH, RANGE 33 EAST, NMPM

Section 26: W/2

(i) A new pool in Lea County, New Mexico classified as a gas pool for Atoka production is hereby created and designated as the Townsend-Atoka Gas Pool, consisting of the following described area:

TOWNSHIP 16 SOUTH, RANGE 35 EAST, NMPM

Section 5: SW/4 and Lots 11, 12, 13 and 14

(j) A new pool in Lea County, New Mexico classified as a gas pool for Atoka production is hereby created and designated as the Wilson-Atoka Gas Pool, consisting of the following described area:

TOWNSHIP 21 SOUTH, RANGE 34 EAST, NMPM

Section 13: W/2

(k) A new pool in Lea County, New Mexico classified as a gas pool for Morrow production is hereby created and designated as the X-4 Ranch-Morrow Gas Pool, consisting of the following described area:

TOWNSHIP 10 SOUTH, RANGE 34 EAST, NMPM

Section 2: S/2

(l) The Antelope Ridge-Atoka Gas Pool in Lea County, New Mexico is hereby extended to include:

TOWNSHIP 23 SOUTH, RANGE 34 EAST, NMPM

Section 21: N/2 SE/4

(m) The South Antelope Ridge-Cherry Canyon Pool in Lea County, New Mexico is hereby extended to include:

TOWNSHIP 23 SOUTH, RANGE 34 EAST, NMPM

Section 22: NE/4

(n) The South Big Dog-Strawn Pool in Lea County, New Mexico is hereby extended to include:

TOWNSHIP 16 SOUTH, RANGE 35 EAST, NMPM

Section 2: SW/4

Section 11: NW/4

(o) The Blinebry Oil and Gas Pool in Lea County, New Mexico is hereby extended to include:

TOWNSHIP 20 SOUTH, RANGE 38 EAST, NMPM

Section 14: NW/4

(p) The Bootleg Ridge-Morrow Gas Pool in Lea County, New Mexico is hereby extended to include:

TOWNSHIP 22 SOUTH, RANGE 32 EAST, NMPM

Section 24: S/2

(q) The West Cato-San Andres Gas Pool in Chaves County, New Mexico is hereby extended to include:

TOWNSHIP 8 SOUTH, RANGE 30 EAST, NMPM

Section 5: SW/4

(r) The North Eidson-Morrow Gas Pool in Lea County, New Mexico is hereby extended to include:

TOWNSHIP 15 SOUTH, RANGE 34 EAST, NMPM

Section 24: E/2

Section 25: N/2

TOWNSHIP 15 SOUTH, RANGE 35 EAST, NMPM

Section 19: W/2

(s) The Southwest Eunice-San Andres Pool in Lea County, New Mexico is hereby extended to include:

TOWNSHIP 22 SOUTH, RANGE 37 EAST, NMPM
Section 4: NW/4

(t) The East Fowler-Ellenburger Pool in Lea County, New Mexico is hereby extended to include:

TOWNSHIP 24 SOUTH, RANGE 38 EAST, NMPM
Section 7: SE/4

(u) The North Hardy-Strawn Pool in Lea County, New Mexico is hereby extended to include:

TOWNSHIP 20 SOUTH, RANGE 38 EAST, NMPM
Section 19: SW/4

(v) The North Hardy-Tubb-Drinkard Pool in Lea County, New Mexico is hereby extended to include:

TOWNSHIP 20 SOUTH, RANGE 37 EAST, NMPM
Section 26: SE/4

TOWNSHIP 20 SOUTH, RANGE 38 EAST, NMPM
Section 30: SE/4

(w) The Kemnitz-Cisco Pool in Lea County, New Mexico is hereby extended to include:

TOWNSHIP 16 SOUTH, RANGE 34 EAST, NMPM
Section 8: NW/4

(x) The Kemnitz-Lower Wolfcamp Pool in Lea County, New Mexico is hereby extended to include:

TOWNSHIP 16 SOUTH, RANGE 34 EAST, NMPM
Section 9: SW/4

(y) The Northeast Lovington-Upper Pennsylvanian Pool in Lea County, New Mexico is hereby extended to include:

TOWNSHIP 16 SOUTH, RANGE 37 EAST, NMPM
Section 9: NW/4

(z) The North Lovington-Wolfcamp Pool in Lea County, New Mexico is hereby extended to include:

TOWNSHIP 16 SOUTH, RANGE 36 EAST, NMPPM
Section 14: NW/4

(aa) The East Lusk-Morrow Gas Pool in Lea County, New Mexico is hereby extended to include:

TOWNSHIP 19 SOUTH, RANGE 32 EAST, NMPPM
Section 22: N/2
Section 23: N/2

(bb) The North Lusk-Morrow Gas Pool in Lea County, New Mexico is hereby extended to include:

TOWNSHIP 18 SOUTH, RANGE 32 EAST, NMPPM
Section 21: W/2 and SE/4

(cc) The vertical limits of the North Morton-Permo Pennsylvanian Pool in Lea County, New Mexico are hereby contracted to include only the Wolfcamp, Cisco, Canyon and Strawn formations and the pool is redesignated as the North Morton-Permo Upper Pennsylvanian Pool.

(dd) The Nadine-Drinkard-Abo Pool in Lea County, New Mexico is hereby extended to include:

TOWNSHIP 19 SOUTH, RANGE 38 EAST, NMPPM
Section 24: NE/4

(ee) The West Osudo-Morrow Gas Pool in Lea County, New Mexico is hereby extended to include:

TOWNSHIP 20 SOUTH, RANGE 35 EAST, NMPPM
Section 35: SW/4

(ff) The Penrose Skelly-Grayburg Pool in Lea County, New Mexico is hereby extended to include:

TOWNSHIP 21 SOUTH, RANGE 37 EAST, NMPPM
Section 10: NE/4
Section 11: NW/4

(gg) The South Quail Ridge-Yates Pool in Lea County, New Mexico is hereby extended to include:

TOWNSHIP 19 SOUTH, RANGE 34 EAST, NMPM
Section 28: NE/4

(hh) The Querecho Plains-Queen Associated Pool in Lea County, New Mexico is hereby extended to include:

TOWNSHIP 18 SOUTH, RANGE 32 EAST, NMPM
Section 26: NE/4

(ii) The Shoe Bar-Atoka Gas Pool in Lea County, New Mexico is hereby extended to include:

TOWNSHIP 17 SOUTH, RANGE 35 EAST, NMPM
Section 4: N/2

(jj) The North Shoe Bar-Atoka Gas Pool in Lea County, New Mexico is hereby extended to include:

TOWNSHIP 16 SOUTH, RANGE 35 EAST, NMPM
Section 10: NW/4
Section 14: W/2

(kk) The South Shoe Bar-Morrow Gas Pool in Lea County, New Mexico is hereby extended to include:

TOWNSHIP 16 SOUTH, RANGE 35 EAST, NMPM
Section 33: E/2
Section 34: SW/4

(ll) The North Shoe Bar-Strawn Pool in Lea County, New Mexico is hereby extended to include:

TOWNSHIP 16 SOUTH, RANGE 35 EAST, NMPM
Section 14: SE/4

(mm) The Teas-Bone Spring Pool in Lea County, New Mexico is hereby extended to include:

TOWNSHIP 20 SOUTH, RANGE 33 EAST, NMPM
Section 3: NE/4

(nn) The Teas-Delaware Pool in Lea County, New Mexico is hereby extended to include:

TOWNSHIP 20 SOUTH, RANGE 33 EAST, NMPM
Section 3: N/2

(oo) The vertical limits of the Tobac-Pennsylvanian Pool in Chaves County, New Mexico are hereby contracted to include only the Cisco, Canyon and Strawn formations and the pool is redesignated as the Tobac-Upper Pennsylvanian Pool.

(pp) The North Townsend-Mississippian Gas Pool in Lea County, New Mexico is hereby extended to include:

TOWNSHIP 16 SOUTH, RANGE 35 EAST, NMPM
Section 24: W/2

(qq) The Townsend-Morrow Gas Pool in Lea County, New Mexico is hereby extended to include:

TOWNSHIP 16 SOUTH, RANGE 35 EAST, NMPM
Section 15: W/2
Section 22: W/2

(rr) The Trinity-Wolfcamp Pool in Lea County, New Mexico is hereby extended to include:

TOWNSHIP 12 SOUTH, RANGE 38 EAST, NMPM
Section 22: SE/4
Section 27: N/2 and SW/4

(ss) The North Vacuum-Atoka-Morrow Gas Pool in Lea County, New Mexico is hereby extended to include:

TOWNSHIP 17 SOUTH, RANGE 35 EAST, NMPM
Section 5: S/2
Section 6: All

(tt) The Vacuum-Blaine Pool in Lea County, New Mexico is hereby extended to include:

TOWNSHIP 17 SOUTH, RANGE 34 EAST, NMPM
Section 26: SW/4

(uu) The Wantz-Abo Pool in Lea County, New Mexico is hereby extended to include:

TOWNSHIP 21 SOUTH, RANGE 37 EAST, NMPM
Section 7: SE/4

(vv) The Weir-Blinebry Pool in Lea County, New Mexico is hereby extended to include:

TOWNSHIP 20 SOUTH, RANGE 37 EAST, NMPM

Section 3: E/2

(ww) The Wilson-Morrow Gas Pool in Lea County, New Mexico is hereby extended to include:

TOWNSHIP 21 SOUTH, RANGE 34 EAST, NMPM

Section 2: S/2

Section 24: N/2

(xx) The South Wilson-Pennsylvanian Gas Pool in Lea County, New Mexico is hereby extended to include:

TOWNSHIP 21 SOUTH, RANGE 34 EAST, NMPM

Section 23: NE/4

(yy) The North Young-Bone Spring Pool in Lea County, New Mexico is hereby extended to include:

TOWNSHIP 18 SOUTH, RANGE 32 EAST, NMPM

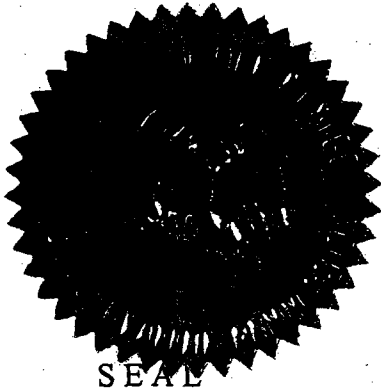
Section 6: SE/4

IT IS FURTHER ORDERED THAT:

(1) Pursuant to Section 70-2-18, NMSA, 1978, an operator of any well that, by virtue of any of the above pool extensions, is subject to pool rules providing for spacing or proration units larger than the one presently dedicated thereto, shall have 60 days from the effective date of this order to file Form C-102 dedicating a standard unit for the pool to that well or to obtain a non-standard unit approved by the Division. Pending such compliance, the well shall receive a maximum allowable in the same proportion to a standard allowable for the pool that the acreage dedicated to the well bears to a standard unit for the pool. Failure to file Form C-102 dedicating a standard unit to the well or to obtain a non-standard unit approved by the Division within that 60-day period shall subject the well to cancellation of allowable.

(2) The effective date of this order and all creations, contractions of vertical limits, and extensions of horizontal limits included herein shall be March 1, 2002.

DONE at Santa Fe, New Mexico, on the day and year hereinabove designated.



STATE OF NEW MEXICO
OIL CONSERVATION DIVISION

Lori Wrotenbery
LORI WROTENBERY
Director

STATE OF NEW MEXICO
ENERGY, MINERALS AND NATURAL RESOURCES DEPARTMENT
OIL CONSERVATION DIVISION

CASE 12793
Order No. R-11728-A

APPLICATION OF THE OIL CONSERVATION
DIVISION FOR AN ORDER CREATING,
CONTRACTING VERTICAL LIMITS, AND
EXTENDING HORIZONTAL LIMITS OF
CERTAIN POOLS IN CHAVES AND LEA
COUNTIES, NEW MEXICO.

See Also Order

*No. R-11728
R-11728-B*

AMENDED ORDER

BY THE DIVISION:

It appears to the New Mexico Oil Conservation Division ("Division") that Order No. R-11728, dated February 20, 2002, does not correctly state the intended order of the Division.

IT IS THEREFORE ORDERED THAT:

(1) Ordering Paragraph No. (1) on page 6 of Order No. R-11728 is hereby amended to read in its entirety as follows:

"(1) The Antelope Ridge-Atoka Gas Pool in Lea County, New Mexico is hereby extended to include:

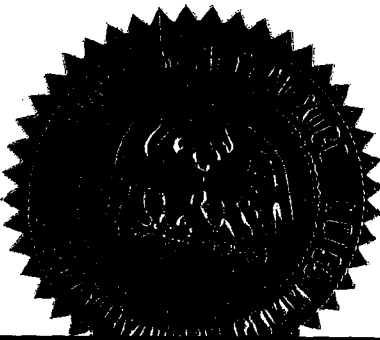
TOWNSHIP 23 SOUTH, RANGE 34 EAST, NMPM
Section 21: N/2 and SE/4"

(2) The corrections set forth in this order shall be entered retroactively as of February 20, 2002.

DONE at Santa Fe, New Mexico, on this 28th day of February, 2002.

STATE OF NEW MEXICO
OIL CONSERVATION DIVISION

Lori Wrotenbery
LORI WROTENBERY
Director



*See Also Orders No. R-11728
R-11728-A*

STATE OF NEW MEXICO
ENERGY, MINERALS AND NATURAL RESOURCES DEPARTMENT
OIL CONSERVATION DIVISION

CASE NO. 12793
Order No. R-11728-B

APPLICATION OF THE OIL CONSERVATION
DIVISION FOR AN ORDER CREATING,
CONTRACTING VERTICAL LIMITS, AND
EXTENDING HORIZONTAL LIMITS OF
CERTAIN POOLS IN CHAVES AND LEA
COUNTIES, NEW MEXICO.

NUNC PRO TUNC ORDER

BY THE DIVISION:

It appearing to the New Mexico Oil Conservation Division ("Division") that Order No. R-11728, as amended, dated February 20, 2002, does not correctly state the intended order of the Division,

IT IS THEREFORE ORDERED THAT:

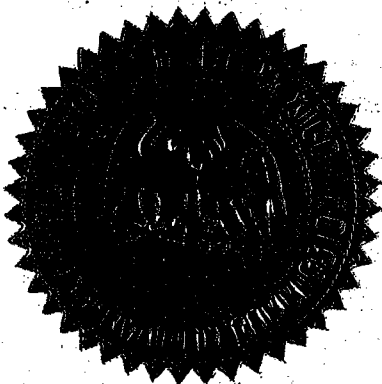
(1) Ordering Paragraph No. (g) on page 5 of Order No. R-11728 is hereby amended to read in its entirety as follows:

"(g) A new pool in Lea County, New Mexico classified as a gas pool for Mississippian production is hereby created and designated as the Sand Springs-Mississippian Gas Pool, consisting of the following described area:

TOWNSHIP 11 SOUTH, RANGE 35 EAST, NMPM
Section 6: E/2 SW/4, SE/4, and Lots 1, 2, 3, 4, 5 and 6"

(2) The corrections set forth in this order shall be entered retroactively as of February 20, 2002.

DONE at Santa Fe, New Mexico, on this 17th day of November, 2004.



SEAL

STATE OF NEW MEXICO
OIL CONSERVATION DIVISION

A handwritten signature in dark ink, appearing to read "Mark E. Fesmire".

MARK E. FESMIRE, P.E.
Director