

SAMEDAN OIL CORPORATION
12600 NORTHBOROUGH, SUITE 250
HOUSTON, TEXAS 77067-3299
(713) 876-6150

OIL CONSERVATION DIVISION
RECEIVED
SEP 12 1994 8 50

September 12, 1994

Oil Conservation Division
PO Box 2088
Santa Fe, New Mexico 87504-2088

Attn: William LeMay:

RE: Down hole Commingling
Sharp Well #1
Unit F, Sec. 12, T-23-S, R-37-E
Cline - Tubb
Cline - Lower Paddock/Blinebry

Samedan Oil Corporation requests administrative approval for the down hole commingling of the above mentioned pools.

We have enclosed the following:

- 1) Area Plat showing ownership of offsetting leases.
- 2) Plat showing acreage dedicated to the well.
- 3) Names and addresses of offsetting operators and a copy of the letter notify them of our intention.
- 4) Division Form C-116 showing 24-hr productivity test from each zone.
- 5) Well History and Prognostication of Future Production.
- 6) Estimated BHP for each Artificially Lifted Zone.
- 7) Fluid Description of each Zone.
- 8) Values of Production.
- 9) Recommended formula for Allocation of production.

We appreciate your consideration in this matter. If you have any questions please call.

Thank you,


Judy Throneberry

attachments

xc: OCC - Hobbs District

152

Petro-Search "Fluor"

72 T/A Blanche E Boyd, MI
Geo W. Sims, et al (S)

Amerand (S) Aztec
HBP HBP
1040 State F 6143 Highland
Tom Lineberry, (S) E-6143

4 T x 200 T07976 NCT-4
Dual 5 U.S. 3 2 Dual 1
Tom & Evelyn Lineberry for

At 44.4	44.4	44.4	Citation 1	44.4
Seely Oil Co. (M.)			OLE HBP	
S. R. Cherry	Deck		B 1167	
	X 3424		v. V Sims,	
Gulf St	Lea St		eral (S)	Condens

Blair & Chevron. H B P
N V P, Ke. et al
Tom & Evelyn Linetery Fdn.

2002 2003 2004 2005 2006 2007 2008 2009 2010 2011 2012 2013 2014 2015 2016 2017 2018 2019 2020 2021 2022 2023 2024 2025 2026 2027 2028 2029 2030 2031 2032 2033 2034 2035 2036 2037 2038 2039 2040 2041 2042 2043 2044 2045 2046 2047 2048 2049 2050 2051 2052 2053 2054 2055 2056 2057 2058 2059 2060 2061 2062 2063 2064 2065 2066 2067 2068 2069 2070 2071 2072 2073 2074 2075 2076 2077 2078 2079 2080 2081 2082 2083 2084 2085 2086 2087 2088 2089 2090 2091 2092 2093 2094 2095 2096 2097 2098 2099 2100 2101 2102 2103 2104 2105 2106 2107 2108 2109 2110 2111 2112 2113 2114 2115 2116 2117 2118 2119 2120 2121 2122 2123 2124 2125 2126 2127 2128 2129 2130 2131 2132 2133 2134 2135 2136 2137 2138 2139 2140 2141 2142 2143 2144 2145 2146 2147 2148 2149 2150 2151 2152 2153 2154 2155 2156 2157 2158 2159 2160 2161 2162 2163 2164 2165 2166 2167 2168 2169 2170 2171 2172 2173 2174 2175 2176 2177 2178 2179 2180 2181 2182 2183 2184 2185 2186 2187 2188 2189 2190 2191 2192 2193 2194 2195 2196 2197 2198 2199 2200 2201 2202 2203 2204 2205 2206 2207 2208 2209 2210 2211 2212 2213 2214 2215 2216 2217 2218 2219 2220 2221 2222 2223 2224 2225 2226 2227 2228 2229 2230 2231 2232 2233 2234 2235 2236 2237 2238 2239 2240 2241 2242 2243 2244 2245 2246 2247 2248 2249 2250 2251 2252 2253 2254 2255 2256 2257 2258 2259 2260 2261 2262 2263 2264 2265 2266 2267 2268 2269 2270 2271 2272 2273 2274 2275 2276 2277 2278 2279 2280 2281 2282 2283 2284 2285 2286 2287 2288 2289 2290 2291 2292 2293 2294 2295 2296 2297 2298 2299 2300 2301 2302 2303 2304 2305 2306 2307 2308 2309 2310 2311 2312 2313 2314 2315 2316 2317 2318 2319 2320 2321 2322 2323 2324 2325 2326 2327 2328 2329 2330 2331 2332 2333 2334 2335 2336 2337 2338 2339 2340 2341 2342 2343 2344 2345 2346 2347 2348 2349 2350 2351 2352 2353 2354 2355 2356 2357 2358 2359 2360 2361 2362 2363 2364 2365 2366 2367 2368 2369 2370 2371 2372 2373 2374 2375 2376 2377 2378 2379 2380 2381 2382 2383 2384 2385 2386 2387 2388 2389 2390 2391 2392 2393 2394 2395 2396 2397 2398 2399 2400 2401 2402 2403 2404 2405 2406 2407 2408 2409 2410 2411 2412 2413 2414 2415 2416 2417 2418 2419 2420 2421 2422 2423 2424 2425 2426 2427 2428 2429 2430 2431 2432 2433 2434 2435 2436 2437 2438 2439 2440 2441 2442 2443 2444 2445 2446 2447 2448 2449 2450 2451 2452 2453 2454 2455 2456 2457 2458 2459 2460 2461 2462 2463 2464 2465 2466 2467 2468 2469 2470 2471 2472 2473 2474 2475 2476 2477 2478 2479 2480 2481 2482 2483 2484 2485 2486 2487 2488 2489 2490 2491 2492 2493 2494 2495 2496 2497 2498 2499 2500 2501 2502 2503 2504 2505 2506 2507 2508 2509 2510 2511 2512 2513 2514 2515 2516 2517 2518 2519 2520 2521 2522 2523 2524 2525 2526 2527 2528 2529 2530 2531 2532 2533 2534 2535 2536 2537 2538 2539 2540 2541 2542 2543 2544 2545 2546 2547 2548 2549 2550 2551 2552 2553 2554 2555 2556 2557 2558 2559 2560 2561 2562 2563 2564 2565 2566 2567 2568 2569 2570 2571 2572 2573 2574 2575 2576 2577 2578 2579 2580 2581 2582 2583 2584 2585 2586 2587 2588 2589 2590 2591 2592 2593 2594 2595 2596 2597 2598 2599 2600 2601 2602 2603 2604 2605 2606 2607 2608 2609 2610 2611 2612 2613 2614 2615 2616 2617 2618 2619 2620 2621 2622 2623 2624 2625 2626 2627 2628 2629 2630 2631 2632 2633 2634 2635 2636 2637 2638 2639 2640 2641 2642 2643 2644 2645 2646 2647 2648 2649 2650 2651 2652 2653 2654 2655 2656 2657 2658 2659 2660 2661 2662 2663 2664 2665 2666 2667 2668 2669 2670 2671 2672 2673 2674 2675 2676 2677 2678 2679 2680 2681 2682 2683 2684 2685 2686 2687 2688 2689 2690 2691 2692 2693 2694 2695 2696 2697 2698 2699 2700 2701 2702 2703 2704 2705 2706 2707 2708 2709 2710 2711 2712 2713 2714 2715 2716 2717 2718 2719 2720 2721 2722 2723 2724 2725 2726 2727 2728 2729 2730 2731 2732 2733 2734 2735 2736 2737 2738 2739 2740 2741 2742 2743 2744 2745 2746 2747 2748 2749 2750 2751 2752 2753 2754 2755 2756 2757 2758 2759 2760 2761 2762 2763 2764 2765 2766 2767 2768 2769 2770 2771 2772 2773 2774 2775 2776 2777 2778 2779 2780 2781 2782 2783 2784 2785 2786 2787 2788 2789 2790 2791 2792 2793 2794 2795 2796 2797 2798 2799 2800 2801 2802 2803 2804 2805 2806 2807 2808 2809 2810 2811 2812 2813 2814 2815 2816 2817 2818 2819 2

Seely Oil	Seely Oil	Samedan	Samedan
Argo St	S/R K	91514 1900	3.1.90
Inter		01	VA-852
Coast		U.S.	2500
Gulf St		S. M. H. H. S.	

FD 36	Six Aches
Dev 7320	H.B.P.
El 9378	063564
0/4 1-9-62	

Six Aches
"Elliott"
6

Millard Deck et al S/R Petro-Search Gulf-St.	Odessa Port Young 103720
Seely Oil	Ameruda HBP B-431
M Beck Gulf-St K-3424 TIA 4500	M R Antwell Gulf-St TD 7175 Samedan Surah
	Store L V Sims. et al (S)

Sarah B. Hughes
(Smokedan oper)
H.B.P.
2244
McCulloch Q172
U.S.
Sims, Setal

A.R.CO.
HBP
063557
Yates
Pet. etc
3.1.96
86179
400

A.R.Co HBP 063557	Meridian HBP 01076	S.D. Young 2.11.80 11130	PAR. Ric WN Parcel
McCulloch Mar. Draw	A.R.Co HBP 063557	Six Aches S.M.I. 100 W. Sims, et al	

Rutledge
 W P Sims
 TO 3658
 Skelly, DR
 Paul F Rutledge,
 et al SIM
 R. D Sims, et al

U.N. Morris
 Bill Staples, Kelton
 et al Oper.
 Tierra Itn 7100
 et al Tierra
 et al (R)
 Flot C Sharp
 R.M. 1 FTS
 Richardson, et al
 Geo W Sims, (s)

Ann Morris
J N Morris
Bill Stabler, etal
HBP

(Sarah B. Phillips)
Hughes HBP
Samedan 2244
Oper.

CHUZA Pet
Gambu
SAMEDAN
Sharp

40 Ac.
Proration Unit

Maxus Expt.	SM Grynberg
4.1.96	5.1.95
86185	54910
2022	
S.M. Grynberg	ARCO
5.1.98	HBP
54910	069466
	Mendia
	etal
	HBP
	069466

JG 20 Prop.
(Curry Resources)
6. 1. 77
(Kelton Oper.
to 100' bel Aba)
JG 20 (Imp.
Prop. 2 Anter.)
(Wor 38
P28
D. 82.
Sarah B Hughes
Sarnedon
HBP 2244
Sarnedon
Sarnedon
Tom & Evelyn Lineberry Fdn
U.S. MI

Kelson Fed.	2.8	(Phillips)	Sarah F Hughes
Ali. Disc Samedan 152 (Sarah Hughes)		Chuzza to 3450	Samedan Oper. HBP 2244
0324528		Phillips	McCulloch Oil 1/2
Phillips "Sarah" U.S. M.I. Tom & Evelyn Lineberry Fdn.		Ed. Ali. Disc. (F 50)	

Marathon	S.M.		
7-1-95	Grynberg	ARCO	
61374	5193	HBP	
	54910		
		069466	
Marathon	Yates	Het	et al
Killion	11-1-90		
8-1-91	4-1-94	0339	
43575	57296	U.S. Mint	KGS P30
	Tom E. U. L. Linber		

Gally HBP
 (Conoco, et al)
 Fina O & C 030186
 (Tenneco)
 Fed. - Cline 14
 Dev. Disc.
 F228

Conoco
etal,
030186
13

1
Cactus
Conf'l-Cl
FD 10287
DIA 5 30 5

Yates
 Pst. Retail
 6.11.94
 01751
 10.00

Marathon
 4.1.94
 57296

Abo Disc
 Dual
 Imp. Amer. P.
 Sutton A.
 Maxus Expl.
 4.1.96
 86186
 20.00

18

Monagon Per
 Fed.
 7010660
 DRA13-68

Tom & Evelyn Linoberry Fdn (S)

U.S., M
Tom & Evelyn Line

SAMEDAN OIL CORPORATION

Tom
Lineberry
et al

Aztec OEG
Meridian E, Fla.
HBP
E8108

SAMEDAN OIL CORPORATION
NO. 1 SHARP
LEA COUNTY, NEW MEXICO

Conoco
etal
H B P

Gulf
H.B.P.
E.1451

SCALE: 1" = 2000'

DATE: 1-94

DISTRICT I
P. O. Box 1980
Hobbs, NM 88240

DISTRICT II
P. O. Drawer DD
Artesia, NM 88210

DISTRICT III
1000 Rio Brazos Rd
Aztec, NM 87410

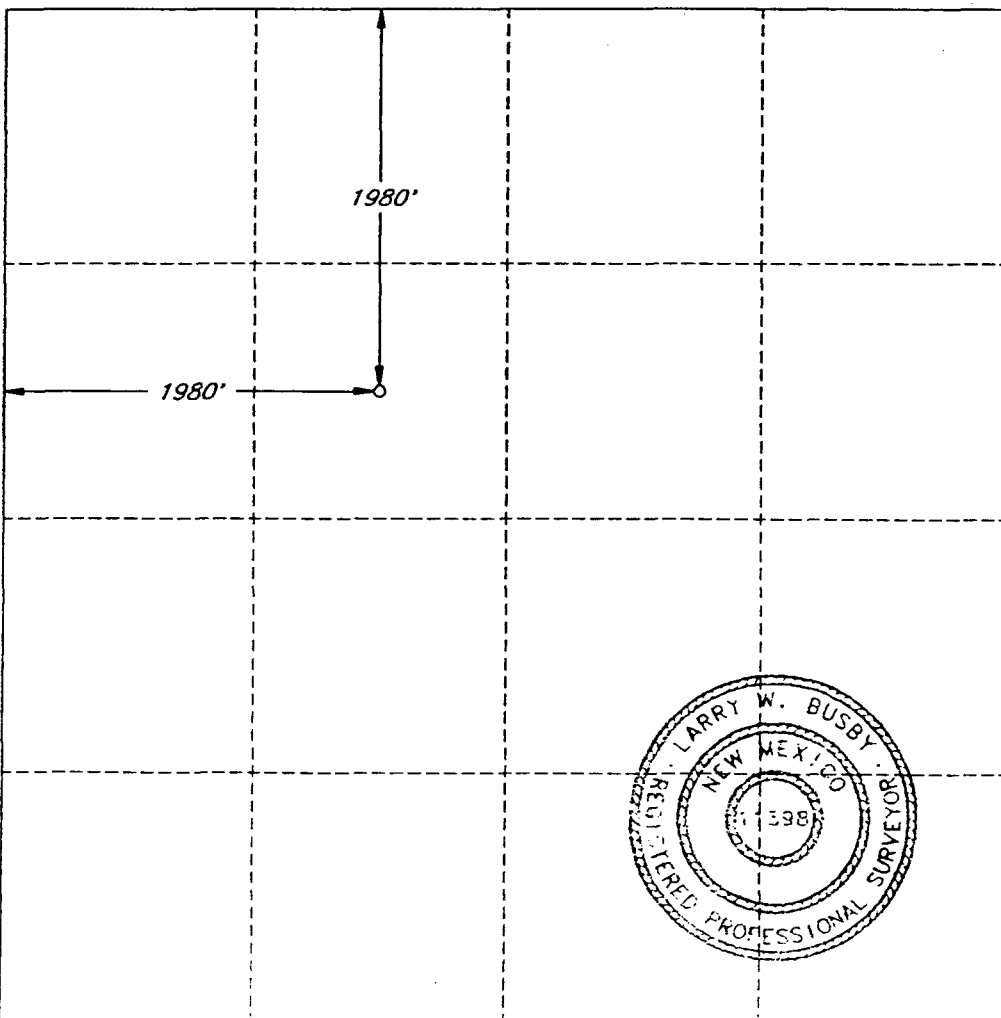
OIL CONSERVATION DIVISION
P. O. Box 2088
Santa Fe, New Mexico 87504-2088

WELL LOCATION AND ACREAGE DEDICATION PLAT

All distances must be from the outer boundaries of the section.

Operator SAMEDAN OIL CORPORATION			Lease SHARP		Well No. 1
Unit Letter F	Section 12	Township 23 SOUTH	Range 37 EAST, N.M.P.M.	County LEA	
Actual Footage Location of Well					
1980 feet from the NORTH line and		1980 feet from the WEST line			
Ground Level Elev. 3297'	Producing Formation Cline		Pool Tubb	40 Acres	

- Outline the acreage dedicated to the subject well by colored pencil or hatchure marks on the plat below.
- If more than one lease is dedicated to the well, outline each and identify the ownership thereof (both as to working interest and royalty).
- If more than one lease of different ownership is dedicated to the well, have the interest of all the owners been consolidated by communitization, unitization, forced-pooling, etc.?
☐ Yes ☐ No If answer is "yes", type of consolidation _____
If the answer is "no", list the owners and tract descriptions which have actually been consolidated. (Use the reverse side of this form if necessary.) _____
No allowable will be assigned to the well until all interests have been consolidated (by communitization, unitization, forced-pooling, or otherwise) or until a non-standard unit, eliminating such interest, has been approved by the division.



OPERATOR CERTIFICATION

I hereby certify that the information herein is true and complete to the best of my knowledge and belief.

Signature
Judy Throneberry
Printed Name
Judy Throneberry
Position
Div Production Clerk
Company
Samedan Oil Corporation
Date
09/12/94

SURVEYOR CERTIFICATION

I hereby certify that the well location shown on this plat was plotted from field notes of actual surveys made by me or under my supervision, and that the same is true and correct to the best of my knowledge and belief.

Date Surveyed
SEPTEMBER 28, 1993

Signature and Seal of
Professional Surveyor

Larry W. Busby
Certificate No.
LARRY W. BUSBY R.P.S. #11398
LWB / 9303-1 / 45SE

DISTRICT I

P. O. Box 1980
Hobbs, NM 88240

DISTRICT II

P. O. Drawer DD
Artesia, NM 88210

DISTRICT III

1000 Rio Brazos Rd
Aztec, NM 87410

OIL CONSERVATION DIVISION

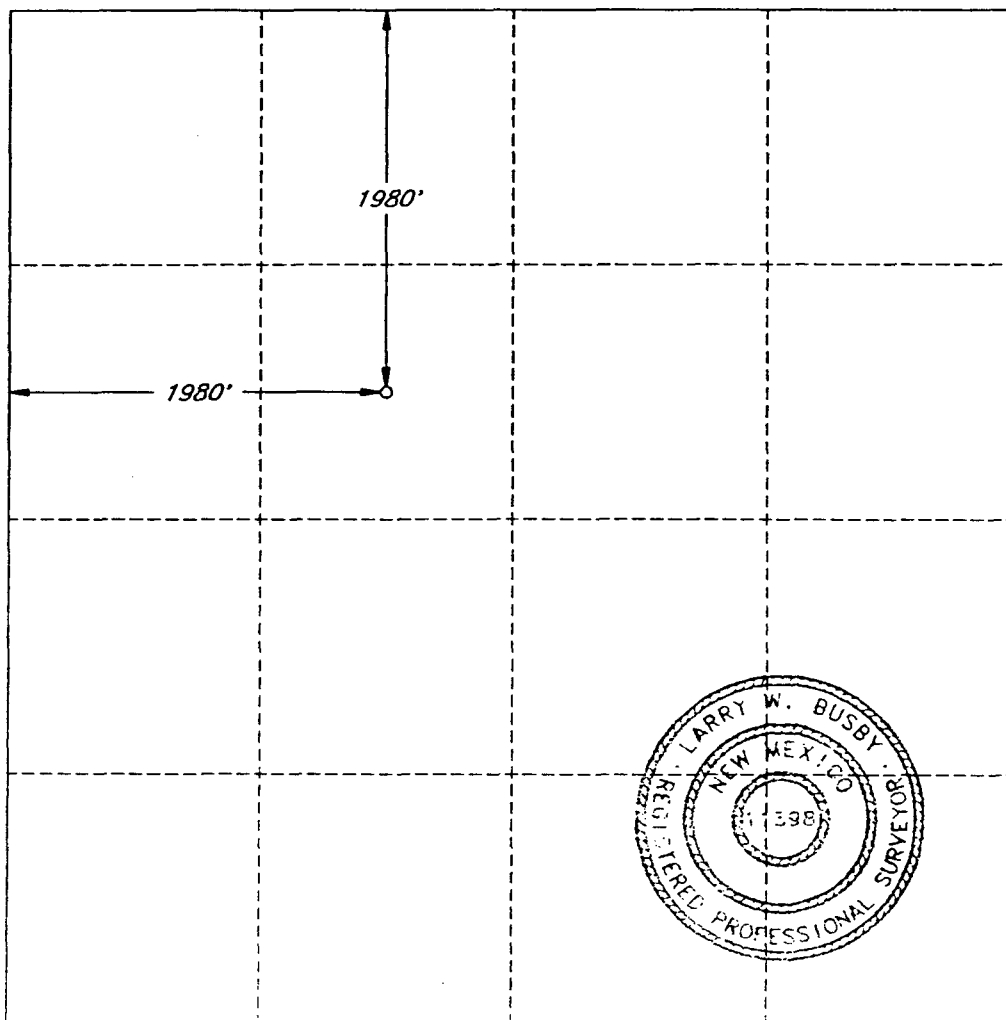
P. O. Box 2088
Santa Fe, New Mexico 87504-2088

WELL LOCATION AND ACREAGE DEDICATION PLAT

All distances must be from the outer boundaries of the section.

Operator SAMEDAN OIL CORPORATION			Lease SHARP		Well No. 1
Unit Letter F	Section 12	Township 23 SOUTH	Range 37 EAST, N.M.P.M.	County LEA	
Actual Footage Location of Well					
1980 feet from the NORTH line and		1980 feet from the WEST line			
Ground Level Elev. 3297'	Producing Formation Cline		Pool Lower Paddock/Blinbry	40	Acres

1. Outline the acreage dedicated to the subject well by colored pencil or hatchure marks on the plat below.
2. If more than one lease is dedicated to the well, outline each and identify the ownership thereof (both as to working interest and royalty).
3. If more than one lease of different ownership is dedicated to the well, have the interest of all the owners been consolidated by communitization, unitization, forced-pooling, etc.?
☐ Yes ☐ No If answer is "yes", type of consolidation _____
If the answer is "no", list the owners and tract descriptions which have actually been consolidated. (Use the reverse side of this form if necessary.) _____
No allowable will be assigned to the well until all interests have been consolidated (by communitization, unitization, forced-pooling, or otherwise) or until a non-standard unit, eliminating such interest, has been approved by the division.



OPERATOR CERTIFICATION

I hereby certify that the information herein is true and complete to the best of my knowledge and belief.

Signature
Judy Throneberry
Printed Name
Judy Throneberry
Position
Div Production Clerk
Company
Samedan Oil Corporation
Date
09/12/94

SURVEYOR CERTIFICATION

I hereby certify that the well location shown on this plat was plotted from field notes of actual surveys made by me or under my supervision, and that the same is true and correct to the best of my knowledge and belief.

Date Surveyed
SEPTEMBER 28, 1993
Signature and Seal of Professional Surveyor
Larry W. Busby
Certificate No.
LARRY W. BUSBY R.P.S. #11398
LWB / 9303-1 / 45SE

OFFSET OPERATORS AND WELLS

Chuza Operating

PO Box 953

Midland, Texas 79702

(915) 686-8985

Phillips Fed. #1

Unit J, Sec 12, T 23-S, R 37E

Lea County, NM

Gambi #1

Unit I, Sec 12, T 23-S, R 37-E

Lea County, NM

Kelton Operating

PO Box 276

Andrews, Texas 79714

(915) 523-6535

Lineberry #1

Unit I, Sec 11, T 23-S, R 37-E

Lea County NM

Lineberry #2

Unit J, Sec 11, T 23-S, R 37-E

Lea County, NM

SAMEDAN OIL CORPORATION
12600 NORTHBOROUGH, SUITE 250
HOUSTON, TEXAS 77067-3299
(713) 876-6150

September 12, 1994

Chuza Operating
PO Box 953
Midland, Texas 79702

RE: Down Hole Commingling
Sharp Well #1
Unit F, Section 12, T-23S, R-37E
Lea County, NM
Cline Tubb Zone
Cline Lower Paddock/Blinebry Zone

This is to notify you as an offset operator of the Sharp Lease Well #1, that we are applying for administrative approval for down hole commingling of Tubb and Lower Paddock/Blinebry production in the Sharp #1 Well.

If you have any questions please contact Gary Hendricks at 713/876-6150. If you have no objections please sign and return the enclosed letter to the New Mexico Oil Conservation Commission in the self-addressed stamped envelope as soon as possible to expedite matters. Any objections must be filed with the Commission within 20 days of the date of this letter.

Thank you for your time and consideration in this matter.



Judy Throneberry
Division Production Clerk

attachments

xc: Oil Conservation Division
Santa Fe, NM

SAMEDAN OIL CORPORATION
12600 NORTHBOROUGH, SUITE 250
HOUSTON, TEXAS 77067-3299
(713) 876-6150

September 12, 1994

Kelton Operating
PO Box 276
Andrews, Texas 79714

RE: Down Hole Commingling
Sharp Well #1
Unit F, Section 12, T-23S, R-37E
Lea County, NM
Cline Tubb Zone
Cline Lower Paddock/Blinebry Zone

This is to notify you as an offset operator of the Sharp Lease Well #1, that we are applying for administrative approval for down hole commingling of Tubb and Lower Paddock/Blinebry production in the Sharp #1 Well.

If you have any questions please contact Gary Hendricks at 713/876-6150. If you have no objections please sign and return the enclosed letter to the New Mexico Oil Conservation Commission in the self-addressed stamped envelope as soon as possible to expedite matters. Any objections must be filed with the Commission within 20 days of the date of this letter.

Thank you for your time and consideration in this matter.



Judy Throneberry
Division Production Clerk

attachments

xc: Oil Conservation Division
Santa Fe, NM

**State of New Mexico
Energy, Minerals and Natural Resources Department**

P.O. Box 1980, Hobbs, NM 88240
DISTRICT II
P.O. Drawer DD, Artesia, NM 88210
DISTRICT III
1000 Rio Brazos Rd., Aztec, NM 87410

OIL CONSERVATION DIVISION

**P.O. Box 2088
Santa Fe, New Mexico 87504-2088**

GAS - OIL RATIO TEST

Operator		Samedan Oil Corporation 020153				Pool - Lower Paddock/Blaineby 12411		County Lea								
Address 12600 Northborough, #250, Houston, Tx 77067						TYPE OF TEST - (X)		Scheduled <input type="checkbox"/>		Completion <input type="checkbox"/>		Special <input checked="" type="checkbox"/>				
LEASE NAME	WELL NO.	LOCATION				DATE OF TEST	STATUS	CHOKE SIZE	TBG. PRESS.	DAILY ALLOW-ABLE	LENGTH OF TEST HOURS	PROD. DURING TEST			GAS - OIL RATIO CU/FT/BBL.	
		U	S	T	R							WATER BBL.S.	GRAV. OIL	OIL BBL.S.		GAS M.C.F.
013179 Sharp	1	F	12	23S	37E	09/08/94	F	20/64	80		24	7	40.1	15	156	10400

During gas-oil ratio test, each well shall be produced at a rate not exceeding the top unit allowable for the pool in which well is located by more than 25 percent. Operator is encouraged to take advantage of this 25 percent tolerance in order that well can be assigned increased allowables when authorized by the Division.

Gas volumes must be reported in MCF measured at a pressure base of 15.025 psia and a temperature of 60° F. Specific gravity base will be 0.60.

Report casing pressure in lieu of tubing pressure for any well producing through casing

(See Rule 301, Rule 1116 & appropriate pool rules.)

I hereby certify that the above information is true and complete to the best of my knowledge and belief.

Signature Andrey Khromov

Judy Throneberry, Div Prod Clerk

Printed name and title

09/12/94

713 876-6150

Date _____

Telephone No. _____

Submit 2 copies to Appropriate
District Office.
DISTRICT I
P.O. Box 1980, Hobbs, NM 88240
DISTRICT II
P.O. Drawer DD, Artesia, NM 88210
DISTRICT III
1000 Rio Brazos Rd., Aztec, NM 87410

State of New Mexico
Energy, Minerals and Natural Resources Department
OIL CONSERVATION DIVISION
P.O. Box 2088
Santa Fe, New Mexico 87504-2088

Form C-116
Revised 1/1/89

GAS - OIL RATIO TEST

Operator Samedan Oil Corporation		Pool Cline - Tubb 12440		County Lea												
Address 12600 Northborough, #250, Houston, Texas 77067		TYPE OF TEST - (X)		Scheduled <input type="checkbox"/> Completion <input type="checkbox"/> Special <input checked="" type="checkbox"/>												
LEASE NAME	WELL NO.	LOCATION				DATE OF TEST	SIZE OF TEST	CHOKE SIZE	TBG. PRESS.	DAILY ALLOWABLE	LENGTH OF TEST HOURS	PROD. DURING TEST			GAS - OIL RATIO CU FT/BBL.	
		U	S	T	R							WATER BBL.S.	GRAV. OIL	OIL BBL.S.		GAS M.C.F.
013179 Sharp	1	F	12	23S	37E	09/08/94	F	22/64	100		24	9	40.1	17	151	8882

Instructions:

During gas-oil ratio test, each well shall be produced at a rate not exceeding the top unit allowable for the pool in which well is located by more than 25 percent. Operator is encouraged to take advantage of this 25 percent tolerance in order that well can be assigned increased allowables when authorized by the Division.

Gas volumes must be reported in MCF measured at a pressure base of 15.025 psia and a temperature of 60° F. Specific gravity base will be 0.60.

Report casing pressure in lieu of tubing pressure for any well producing through casing.

(See Rule 301, Rule 1116 & appropriate pool rules.)

I hereby certify that the above information is true and complete to the best of my knowledge and belief.

Signature Judy Theneberry
Judy Theneberry, Div Prod Clerk

Printed name and title
09/12/94 713 876-6150

Date Telephone No.

5. WELL HISTORY
See Well Configuration Sketches.

PROGNOSTICATION OF FUTURE PRODUCTION

Production decline rates for both zones Tubb and Lower Paddock/Blinebry can be assumed to be similar. Estimated monthly production for 1995 is submitted below based on latest production rates declined 20% annually.

1995 ESTIMATE PRODUCTION

	TUBB			LOWER PADDOCK/BLINEBRY		
	OIL	WATER	GAS	OIL	WATER	GAS
Jan	456	5	5325	456	5	4092
Feb	448	5	5227	448	5	4017
Mar	440	5	5131	440	5	3943
Apr	432	5	5036	432	5	3870
May	423	5	4943	432	5	3799
Jun	416	5	4852	416	5	3729
Jul	408	5	4675	408	5	3593
Aug	401	5	4589	393	5	3526
Sep	393	5	4504	386	5	3398
Oct	386	5	4421	379	5	3398
Nov	379	5	4340	372	5	3335
Dec	372	5	4340	372	5	3335

ESTIMATED COMBINED PRODUCTION

	OIL	WATER	GAS
Jan	912	10	9417
Feb	896	10	9244
Mar	880	10	9074
Apr	864	10	8906
May	846	10	8742
Jun	832	10	8581
Jul	816	10	8423
Aug	802	10	8208
Sep	786	10	8115
Oct	772	10	7905
Nov	758	10	7819
Dec	744	10	7675

6. ESTIMATED BHP FOR EACH ARTIFICIALLY LIFTED ZONE

The wellbore will produce from the Tubb and Lower Paddock/Blinebry zones. Both producing zones will be artificially lifted. Measured BHP data for this well is not available. However, based on production rates and the fact that both zones will require artificial lift, it is estimated that each zone will be relatively close to the same BHP. Cross flow will not occur due to the fact that production will be artificially lifted and no differential pressure will exist.

7. FLUID DESCRIPTION OF EACH ZONE

Tubb Zone: Crude Oil, 33.8° API @ 60° F.
Produced water: SG = 1.055 @ 80°F, TDS - 10106 PPM
Total hardness = 19810 PPM

Lower Paddock/Bliebry zone: Crude Oil, 40° API @ 60°F.
Produced water: SG = 1.102 @ 60°F, TDS = 122744 PPM
Total Hardness = 24545 PPM

Permission to surface commingle production from the Cline Tubb and Cline Lower Paddock/Bliebry Zones was previously approved by the NMOCD for the Sharp Well #1 under order PC-887. No adverse affects have occurred due to surface commingling. It is anticipated that fluid characteristics will not significantly change at the BHP or temperatures and no adverse conditions would be created by down hole commingling.

8. FOR VALUES OF PRODUCTION

Samedan owns and operates 100% of the Sharp Lease. The production from the Tubb and Lower Paddock/Bliebry Pool is currently surface commingled on the Sharp lease. The commingled gravity at 60° is 38.7°. No reduction in valve will be realized by downhole commingling the Sharp #1

9. FORMULA FOR ALLOCATION OF PRODUCTION

Production was allocated based on the most recent well test data as shown on the Field Production Report, and it is felt this will continue to be representative.

	<u>OIL</u>	<u>GAS</u>	<u>WTR</u>
Lower Paddock/Bliebry	50%	43%	50%
Tubb	50%	57%	50%

Samedan Oil Corporation
Configuration Prior to Commingling

Sharp #1	1980' FNL and 1980' FWL
Well Name	Section 12, T-23-S, R-37-E
Lea, New Mexico	Location
County, State	3297 GL
	Elevation
	Dec-93
	Perforate the Tubb as follows:
	6140-44 (4 holes), 6146-48 (2 holes),
	6150-52 (2 holes), 6166-72 (6 holes),
	6182-84 (2 holes), 6188-94 (6 holes)
	Total 24 holes
	Breakdown formation with 500 gals
	15% NEFE HCL acid at 4.9 BPM
	and 1688 psi.
	Frac down the casing with 28000
	gals Spectra-Frac G-3000 with
	84000# 20/40 Ottawa sand and
	16000# 20/40 CRS sand as follows:
	Pump 10000 gallons pad
	Pump 7000 gals ramping 1-5.4 ppg
	Pump 9000 gals ramping 5.4-8 ppg
	Pump 2000 gals with 8 ppg resin
	Avg rate 20.5 BPM at 1550 psi.
	Tubb potential 12-20-93
	20 BOPD, 40 BWPD, 399 MCFPD
	Flowing at 120 psi on a 26/64" chk
	1/6/94
	Perf the Lower Paddock/Blincbry
	as follows:
	5616-56 (5 holes), 5634-36 (5 holes)
	5640-44 (9 holes), 5652-53 (3 holes)
	5660-66 (13 holes), 5674-78 (9 holes)
	44 total holes.
	Acidize with 1000 gallons 15% NEFE
	HCl at 7 BPM and 1550 psi.
	Frac down the casing with 26000
	gals Spectrafrac G-3000 with 76000#
	20/40 Ottawa sand and 8000# 20/40
	CRS sand.
	Pump 8000 gals pad
	Pump 1091 gals with 2 ppg
o	5616 Pump 2362 gals with 4 ppg
o	Pump 3815 gals with 6 ppg
o	Pump 8172 gals with 8 ppg
o	Pump 1385 gals with 8 ppg CRS
o	5678 Avg rate 20.2 BPM at 1300 psi
	Lower Paddock/Blincbry Potential
	dated 1-14-94
	Flow 130 BOPD, 120 BWPD and
	486 MCFPD at 210# FTP on a
	6140 26/64" choke.
o	
o	Set Baker Lokset packer at 6082'.
o	Ran 2 1/16" J-55 3.25# 10 rd tubing
o	6194 and latched on to packer (193 joints)
	Ran SN and 171 joints 2 1/16" J-55
	3.25# 10 rd tubing and set at 5566'
	Kick well off flowing as a dual.
	SI well until gas sales line installed.
13 3/8" 48# H-40 casing at 913'.	
Cemented with 275 sacks Class C	
with 4% gel and 2% CaCl2. Tail in	
with 200 sacks Class C with 2%	
CaCl2. Did not circulate cement.	
Ran survey and found TOC 10'	
from surface.	
Note: 11" hole drilled from surface	
casing to 3208'. 7 7/8" hole drilled	
from 3208' to TD.	
6/15/94	
Installed gas sales line and began	
production from well.	
5 1/2" 15.5# J-55 casing at 6300'.	
Cemented with 250 sacks Class H	
with 16% gel, 5# salt, 1/4# flocele	
and 0.4% CFR3. Pump 450 sacks	
Class H Light with 5#/sk salt, 1/4#	
flocele and 0.4% Halad 9. Tail in	
with 250 sacks Class H 50/50 Poz	
with 3#/sk KCL and 0.4% Halad 9.	
Circ 222 sacks to the pit.	

Samedan Oil Corporation
Configuration After Commingling

Sharp #1	1980' FNL and 1980' FWL
Well Name	Section 12, T-23-S, R-37-E
Lea, New Mexico	Location
County, State	3297 GL
	Elevation
	Dec-93
	Perforate the Tubb as follows:
	6140-44 (4 holes), 6146-48 (2 holes),
	6150-52 (2 holes), 6166-72 (6 holes),
	6182-84 (2 holes), 6188-94 (6 holes)
	Total 24 holes
	Breakdown formation with 500 gals
	15% NEFE HCL acid at 4.9 BPM
	and 1688 psi.
	Frac down the casing with 28000
	gals Spectra-Frac G-3000 with
	84000# 20/40 Ottawa sand and
	16000# 20/40 CRS sand as follows:
	Pump 10000 gallons pad
	Pump 7000 gals ramping 1-5.4 ppg
	Pump 9000 gals ramping 5.4-8 ppg
	Pump 2000 gals with 8 ppg resin
	Avg rate 20.5 BPM at 1550 psi.
	Tubb potential 12-20-93
	20 BOPD, 40 BWPD, 399 MCFPD
	Flowing at 120 psi on a 26/64" chk
	1/6/94
	Perf the Lower Paddock/Blinebry
	as follows:
	5616-56 (5 holes), 5634-36 (5 holes)
	5640-44 (9 holes), 5652-53 (3 holes)
	5660-66 (13 holes), 5674-78 (9 holes)
	44 total holes.
	Acidize with 1000 gallons 15% NEFE
	HCl at 7 BPM and 1550 psi.
	Frac down the casing with 26000
	gals Spectrafrac G-3000 with 76000#
	20/40 Ottawa sand and 8000# 20/40
	CRS sand.
	Pump 8000 gals pad
	Pump 1091 gals with 2 ppg
5616	Pump 2362 gals with 4 ppg
o	Pump 3815 gals with 6 ppg
o	Pump 8172 gals with 8 ppg
o	Pump 1385 gals with 8 ppg CRS
o	5678 Avg rate 20.2 BPM at 1300 psi
	Lower Paddock/Blinebry Potential
	dated 1-14-94
	Flow 130 BOPD, 120 BWPD and
	486 MCFPD at 210# FTP on a
6140	26/64" choke.
o	
o	Set Baker Lokset packer at 6082'.
o	Ran 2 1/16" J-55 3.25# 10 rd tubing
o	and latched on to packer (193 joints)
6194	Ran SN and 171 joints 2 1/16" J-55
	3.25# 10 rd tubing and set at 5566'
	Kick well off flowing as a dual.
	SI well until gas sales line installed.

13 3/8" 48# H-40 casing at 913'.
Cemented with 275 sacks Class C
with 4% gel and 2% CaCl2. Tail in
with 200 sacks Class C with 2%
CaCl2. Did not circulate cement.
Ran survey and found TOC 10'
from surface.

Note: 11" hole drilled from surface
casing to 3208'. 7 7/8" hole drilled
from 3208' to TD.

6/15/94

Installed gas sales line and began
production from well.

5 1/2" 15.5# J-55 casing at 6300'.
Cemented with 250 sacks Class H
with 16% gel, 5# salt, 1/4# flocele
and 0.4% CFR3. Pump 450 sacks
Class H Light with 5#/sk salt, 1/4#
flocele and 0.4% Halad 9. Tail in
with 250 sacks Class H 50/50 Poz
with 3#/sk KCL and 0.4% Halad 9.
Circ 222 sacks to the pit.

Samedan Oil Corporation
Sharp #1 Field Production Report

Date	Sharp 1 Paddock					Sharp #1 Tubb				
	BOPD	BWPD	MCFPD	FTP	Choke	BOPD	BWPD	MCFPD	FTP	Ch
6/15/94	30	2	303	800	16	0	16	158	1350	16
6/16/94	31	38	584	550	20	20	8	217	450	16
6/17/94	33	40	451	500	20	24	15	263	440	21
6/18/94	30	37	384	460	20	20	15	290	250	20
6/19/94	29	38	355	400	20	21	13	302	200	20
6/20/94	26	37	362	360	20	21	15	305	200	20
6/21/94	25	20	338	380	20	21	10	298	200	21
6/22/94	23	19	320	360	20	22	10	292	200	21
6/23/94	32	20	309	360	20	26	13	289	200	21
6/24/94	36	19	305	320	20	30	15	287	200	21
6/25/94	45	21	294	300	20	35	24	282	100	21
6/26/94	43	20	287	300	20	37	23	206	100	21
6/27/94	45	20	282	320	20	40	23	166	110	20
6/28/94	46	20	277	320	20	38	21	271	120	20
6/29/94	45	20	280	340	20	40	21	275	130	20
6/30/94	43	20	279	340	20	40	21	270	140	20
7/1/94	46	20	277	320	20	38	21	271	140	20
7/2/94	45	18	299	200	20	38	20	250	200	20
7/3/94	46	18	290	200	20	40	21	248	200	19
7/4/94	45	19	284	200	20	38	19	245	200	19
7/5/94	36	14	278	200	20	30	10	243	200	19
7/6/94	37	12	273	200	20	31	8	240	200	19
7/7/94	36	10	267	200	20	30	7	239	200	19
7/8/94	0	0	0 pkr leakage			0	0	0 pkr leakag		
7/9/94	36	9	253	380	17	0	0	0 pkr leakag		
7/10/94	0	0	0 pkr leakage			0	0	0 pkr leakag		
7/11/94	0	0	0 pkr leakage			15	3	136	1480	14
7/12/94	34	11	280	800	17	20	6	125	1200	18
7/13/94	30	8	346	###	18	36	10	259	800	17
7/14/94	35	10	233	300	20	30	8	271	200	19
7/15/94	36	9	240	300	20	30	7	280	200	19
7/16/94	35	10	255	300	20	20	8	235	200	19
7/17/94	36	8	261	240	20	30	8	230	200	20
7/18/94	37	8	258	200	20	30	8	227	200	20
7/19/94	36	7	265	200	20	30	7	227	200	20
7/20/94	36	9	249	200	20	30	8	224	200	20
7/21/94	37	8	245	200	20	30	8	221	200	20
7/22/94	36	7	242	200	20	20	8	219	200	20
7/23/94	34	9	238	180	20	29	9	216	180	19
7/24/94	33	8	231	200	20	28	6	215	200	19
7/25/94	32	7	222	200	20	28	7	211	200	19
7/26/94	33	6	217	200	20	28	5	205	200	19
7/27/94	34	6	213	200	20	26	5	204	200	19
7/28/94	33	7	209	200	20	26	5	205	200	19
7/29/94	32	7	205	200	20	27	6	201	200	19
7/30/94	30	7	199	200	20	25	5	202	200	19
7/31/94	31	8	201	200	20	25	5	199	200	19
8/1/94	31	7	198	200	20	26	7	197	200	19
8/2/94	31	7	195	200	20	26	7	199	200	19
8/3/94	30	7	193	190	20	25	6	197	190	19
8/4/95	31	7	190	190	20	25	6	193	200	19
8/5/94	30	7	186	190	20	25	6	191	200	19
8/6/94	30	7	184	185	20	25	6	195	180	19
8/7/94	30	8	180	185	20	26	6	185	180	19
8/8/94	30	7	177	185	20	25	7	187	180	19
8/9/94	29	5	175	180	20	22	5	188	170	19
8/10/94	29	5	178	180	20	23	5	191	170	19
8/11/94	28	7	171	190	20	20	6	184	180	19
8/12/94	27	5	169	190	20	20	4	182	180	19
8/13/94	25	4	166	190	20	20	4	181	180	19
8/14/94	24	5	165	190	20	20	4	184	180	19
8/15/94	19	5	179	190	20	23	5	161	175	19
8/16/94	21	5	161	190	20	16	5	174	175	19
8/17/94	21	5	158	190	20	17	6	174	175	19
8/18/94	22	8	155	190	20	19	6	178	175	19
8/19/94	20	5	149	170	20	18	6	175	175	19
8/20/94	19	5	146	170	20	16	7	174	175	19
8/21/94	19	5	148	170	20	17	5	169	175	19
8/22/94	19	5	146	170	20	16	4	170	175	19
8/23/94	19	5	143	170	20	16	4	167	175	19
8/24/94	18	5	141	170	20	17	4	171	175	19
8/25/94	17	5	140	170	20	15	5	167	175	19
8/26/94	17	5	138	170	20	15	5	166	175	19
8/27/94	16	6	136	170	20	15	4	165	175	19
8/28/94	15	6	136	170	20	15	5	164	175	19
8/29/94	15	5	134	170	20	14	4	163	175	19
8/30/94	12	4	133	170	20	13	3	162	175	19
8/31/94	15	5	146	180	19	16	6	161	195	20
Totals	2278	848	17456			1849	674	15934		

OIL CONSERVATION DIVISION
RECEIVED

94 OCT 13 AM 8:52

September 12, 1994

New Mexico Oil Conservation Commission
Post Office Box 2088
Santa Fe, New Mexico 87504

Attention: Mr. Bill LeMay

RE: Down Hole Commingling

This is to advise that we have been notified of Samedan Oil Corporation's application to down hole commingle the following described well in accordance with Commission regulations:

Unit F, Section 12, T-23S, R-37E
Lea County, New Mexico
Sharp Well #1
Cline - Tubb
Cline - Lower Paddock/Blinebry

We, as an off-set operator, have no objection to the proposed down hole commingling of the Tubb and Lower Paddock/Blinebry.

Very truly yours,

KELTON OPERATING

BY:



Name: C. Dale Kelton, President

DATE: September 28, 1994

DHC-1059



STATE OF NEW MEXICO
ENERGY, MINERALS AND NATURAL RESOURCES DEPARTMENT

OIL CONSERVATION DIVISION
HOBBS DISTRICT OFFICE

OIL CONSERVATION DIVISION
94 SEP 27 AM 8 50

9-20-94

BRUCE KING
GOVERNOR

POST OFFICE BOX 1980
HOBBS, NEW MEXICO 88241-1980
(505) 393-6161

OIL CONSERVATION DIVISION
P. O. BOX 2088
SANTA FE, NEW MEXICO 87501

RE: Proposed:

MC	_____
DHC	_____ X _____
NSL	_____
NSP	_____
SWD	_____
WFX	_____
PMX	_____

Gentlemen:

I have examined the application for the:

Samedan Oil Corp Sharp #1-F 12-23s-37e
Operator Lease & Well No. Unit S-T-R

and my recommendations are as follows:

OK

Yours very truly,

Jerry Sexton
Supervisor, District 1

/ed