

*PMESD-529939192*

**PECOS PETROLEUM ENGINEERING, Inc.**

**P.O. BOX 2885  
SUITE 536, 200 W. FIRST ST.  
ROSWELL, NEW MEXICO 88202  
505-624-2800**

October 4, 2005

Mr. Michael Stogner  
New Mexico Oil Conservation Division  
1220 South St. Francis Dr.  
Santa Fe, New Mexico 87505

Re: Armstrong Energy Corporation  
Foster State #1  
API No.:30-015-21236  
Section 8 E-T24S-R23E  
Eddy County, New Mexico

2005 OCT 12 PM 1 18

*Wildcat  
Pennsylvania*

Dear Mr. Stogner:

Enclosed, please find a land plat showing the location of the Foster State #1 well and a copy of the Application for Permit to Drill. Armstrong Energy Corporation plans to reenter the Foster State #1, that was drilled in 1974, and attempt a completion in the Morrow, Strawn and Canyon zones. Due to the location of the original wellbore at 2310' FNL and 660' FWL of section 8, it is now at a nonstandard location. We respectfully submit the following data for your consideration for administrative approval of this nonstandard location.

The Foster State #1 was spudded on August 30, 1974 by Inexco Oil Company. It was T.D.'d at 9,450' and abandoned on November 8, 1974. The original proration unit was the W/2 of section 8, which is still supported by the presence of the Huapache Fault running north-south through the approximate middle of the section.

At the August State Land Sale Armstrong Energy Corporation and Capstone Oil & Gas Company, L.P., through their agent J Bar Cane, Inc., jointly purchased the two leases comprising the N/2 and S/2 of section 8. The N/2 lease is V-07509 and the S/2 lease is V-07510. Common interest is shared throughout section 8. An application is being prepared, to be submitted to the State Land Office, to communitize the NW/4 and the SW/4 into a W/2 proration unit.

The well location is at a nonstandard location based on current spacing rules. The affected interests are in the SW/4 of section 8, which have common interests in the NW/4 of section 8.

Please review the enclosed information and should you have any questions, please call me at 505-

624-2800 to discuss this project. Your prompt attention to this matter is greatly appreciated.

Very Truly Yours,

A handwritten signature in black ink, appearing to read "B. Stubbs". The signature is fluid and cursive, with a large initial "B" and a stylized "Stubbs".

Bruce A. Stubbs P.E.

xc:     Armstrong Energy Corporation  
          Phil Brewer



District I  
1625 N. French Dr., Hobbs, NM 88240  
District II  
1301 W. Grand Avenue, Artesia, NM 88210  
District III  
1000 Rio Brazos Road, Aztec, NM 87410  
District IV  
1220 S. St. Francis Dr., Santa Fe, NM 87505

State of New Mexico  
Energy Minerals and Natural Resources

Form C-101  
May 27, 2004

Oil Conservation Division  
1220 South St. Francis Dr.  
Santa Fe, NM 87505

Submit to appropriate District Office

☐ AMENDED REPORT

**APPLICATION FOR PERMIT TO DRILL, RE-ENTER, DEEPEN, PLUGBACK, OR ADD A ZONE**

<sup>1</sup> Operator Name and Address <b>Armstrong Energy Corporation</b>		<sup>2</sup> OGRID Number <b>001092</b>
		<sup>3</sup> API Number <b>30-015-21236</b>
<sup>4</sup> Property Code	<sup>5</sup> Property Name <b>Foster State</b>	<sup>6</sup> Well No. <b>1</b>
<sup>9</sup> Proposed Pool 1 <b>Hess East</b>		<sup>10</sup> Proposed Pool 2 <b>Hess Southwest</b>

**7 Surface Location**

UL or lot no.	Section	Township	Range	Lot Idn	Feet from the	North/South line	Feet from the	East/West line	County
E	8	24S	23E		2310	North	660	West	Eddy

**8 Proposed Bottom Hole Location If Different From Surface**

UL or lot no.	Section	Township	Range	Lot Idn	Feet from the	North/South line	Feet from the	East/West line	County

**Additional Well Information**

<sup>11</sup> Work Type Code <b>E</b>	<sup>12</sup> Well Type Code <b>G</b>	<sup>13</sup> Cable/Rotary <b>R</b>	<sup>14</sup> Lease Type Code <b>S</b>	<sup>15</sup> Ground Level Elevation <b>4576</b>
<sup>16</sup> Multiple <b>N</b>	<sup>17</sup> Proposed Depth <b>9450</b>	<sup>18</sup> Formation <b>Morrow</b>	<sup>19</sup> Contractor <b>Unknown</b>	<sup>20</sup> Spud Date <b>December 1, 2005</b>
Depth to Groundwater <b>115 ft.</b>		Distance from nearest fresh water well <b>1.5 mi., SE/4 Sec. 9-T24S-R23E</b>		Distance from nearest surface water <b>Hess Spring 1.6 mi., Sitting Bull Falls 4 mi.</b>
Pit: Liner: Synthetic <input checked="" type="checkbox"/> <b>12</b> mils thick Clay <input type="checkbox"/> Pit Volume: <b>2000</b> bbls 50'x50'x5' Drilling Method: Closed-Loop System <input type="checkbox"/> Fresh Water <input checked="" type="checkbox"/> Brine <input checked="" type="checkbox"/> Diesel/Oil-based <input type="checkbox"/> Gas/Air <input type="checkbox"/>				

**21 Proposed Casing and Cement Program**

Hole Size	Casing Size	Casing weight/foot	Setting Depth	Sacks of Cement	Estimated TOC
26"	20" (Existing)		44'	2 yds. Redi-mix	Surface
17 1/2"	13 3/8" (Existing)	48	375'	250 sx.	Surface
12 1/4"	8 5/8" (Existing)	24	2769'	800 sx.TLW+200 sx. C +135 C sx. C	Surface
7 7/8"	5 1/2"	17	9450'	600 sx.	6000'

<sup>22</sup> Describe the proposed program. If this application is to DEEPEN or PLUG BACK, give the data on the present productive zone and proposed new productive zone. Describe the blowout prevention program, if any. Use additional sheets if necessary.

Armstrong Energy Corporation proposes to reenter the Foster State #1, drill out plugs at 0-30', 2730-2830', 4000-4100', 6170-6270' and 8850-8950', run 5 1/2" casing at 9450' and cement from T.D. to 6000'. The Morrow and Strawn zones will be production tested. If these zones are not commercial the well will be plugged and abandoned in accordance to State Regulations.

A mud program, pit plan, blowout preventer plan and H<sub>2</sub>S contingency plan are attached.

<sup>23</sup> I hereby certify that the information given above is true and complete to the best of my knowledge and belief. I further certify that the drilling pit will be constructed according to NMOCD guidelines ☒, a general permit ☐, or an (attached) alternative OCD-approved plan ☐.

Printed name: Bruce A. Stubbs

Title: Engineer

E-mail Address: pecos@lookingglass.net

Date: 9-20-2005

Phone: 505-624-2800

**OIL CONSERVATION DIVISION**

Approved by:

Title:

Approval Date:

Expiration Date:

Conditions of Approval Attached ☐

District I  
1625 N. French Dr., Hobbs, NM 88240  
District II  
1301 W. Grand Avenue, Artesia, NM 88210  
District III  
1000 Rio Brazos Rd., Aztec, NM 87410  
District IV  
1220 S. St. Francis Dr., Santa Fe, NM 87505

State of New Mexico  
Energy, Minerals & Natural Resources Department  
OIL CONSERVATION DIVISION  
1220 South St. Francis Dr.  
Santa Fe, NM 87505

Form C-102  
Revised June 10, 2003  
Submit to Appropriate District Office  
State Lease - 4 Copies  
Fee Lease - 3 Copies

☐ AMENDED REPORT

WELL LOCATION AND ACREAGE DEDICATION PLAT

<sup>1</sup> API Number 30-015-21236	<sup>2</sup> Pool Code	<sup>3</sup> Pool Name Wildcat
<sup>4</sup> Property Code	<sup>5</sup> Property Name Foster State Com.	<sup>6</sup> Well Number 1
<sup>7</sup> OGRID No. 001092	<sup>8</sup> Operator Name Armstrong Energy Corporation	<sup>9</sup> Elevation 4631.8' GL

<sup>10</sup> Surface Location

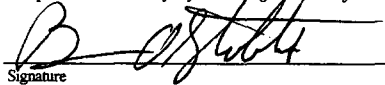
UL or lot no.	Section 8	Township 24S	Range 23E	Lot Idn	Feet from the 2310	North/South line North	Feet from the 660'	East/West line West	County Eddy
---------------	--------------	-----------------	--------------	---------	-----------------------	---------------------------	-----------------------	------------------------	----------------

<sup>11</sup> Bottom Hole Location If Different From Surface

UL or lot no.	Section	Township	Range	Lot Idn	Feet from the	North/South line	Feet from the	East/West line	County
---------------	---------	----------	-------	---------	---------------	------------------	---------------	----------------	--------

<sup>12</sup> Dedicated Acres 320	<sup>13</sup> Joint or Infill N	<sup>14</sup> Consolidation Code P	<sup>15</sup> Order No.
--------------------------------------	------------------------------------	---------------------------------------	-------------------------

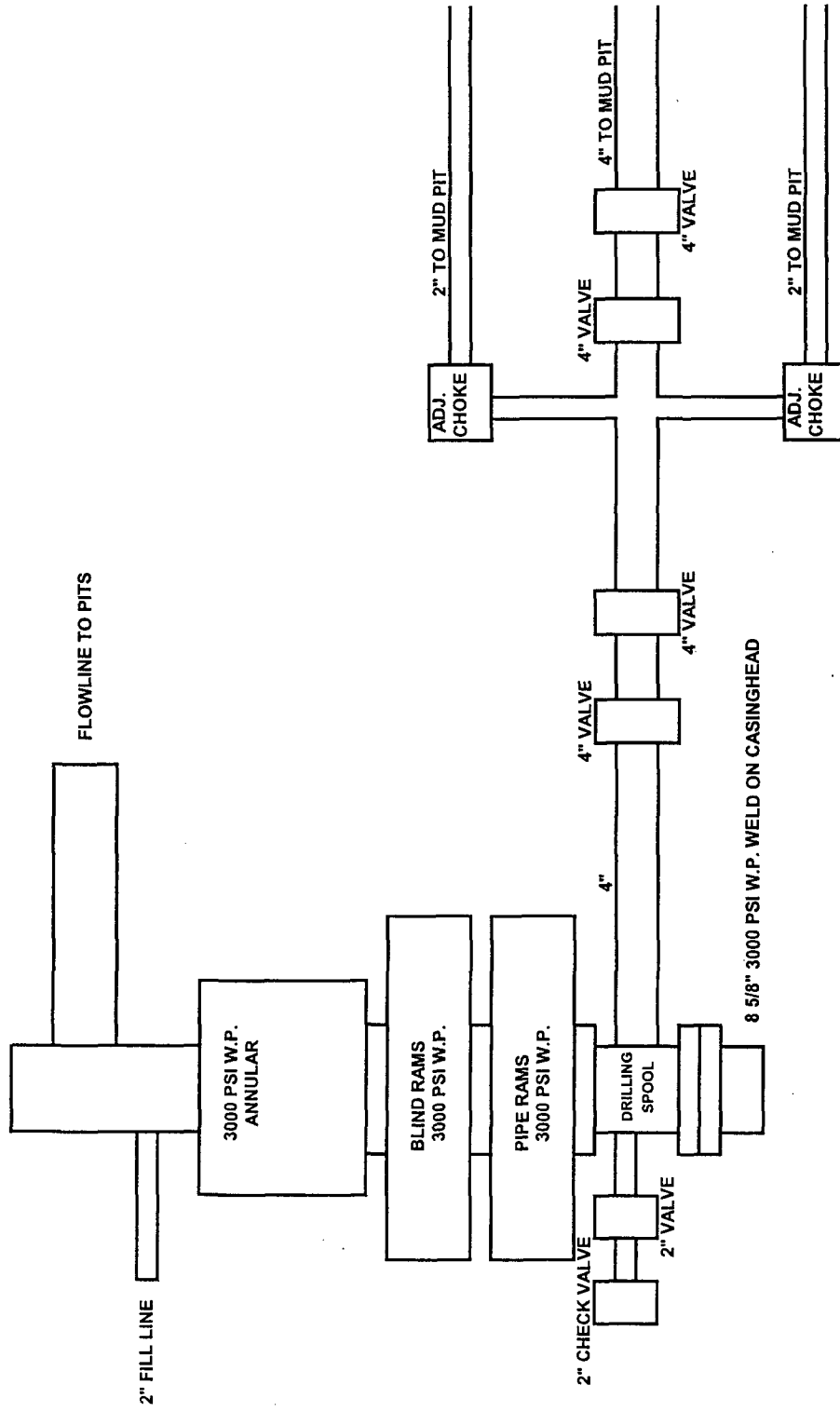
NO ALLOWABLE WILL BE ASSIGNED TO THIS COMPLETION UNTIL ALL INTERESTS HAVE BEEN CONSOLIDATED OR A NON-STANDARD UNIT HAS BEEN APPROVED BY THE DIVISION

<sup>16</sup> 2310' 660'	Armstrong Energy Corporation 50% Capstone Oil & Gas Company, LP 50% New Mexico State Royalty 1/6	N/2 Lease No.: V-07509	<sup>17</sup> OPERATOR CERTIFICATION I hereby certify that the information contained herein is true and complete to the best of my knowledge and belief.  Signature Bruce A. Stubbs Printed Name Engineer pecos@lookingglass.net Title and E-mail Address September 20, 2005 Date
	Armstrong Energy Corporation 50% Capstone Oil & Gas Company, LP 50% New Mexico State Royalty 1/6	S/2 Lease No.: V-07510	<sup>18</sup> SURVEYOR CERTIFICATION I hereby certify that the well location shown on this plat was plotted from field notes of actual surveys made by me or under my supervision, and that the same is true and correct to the best of my belief. Date of Survey Signature and Seal of Professional Surveyor: Originally surveyed by John W. West on May 9, 1974 Certificate Number

Standard 640-acre Section

Date:

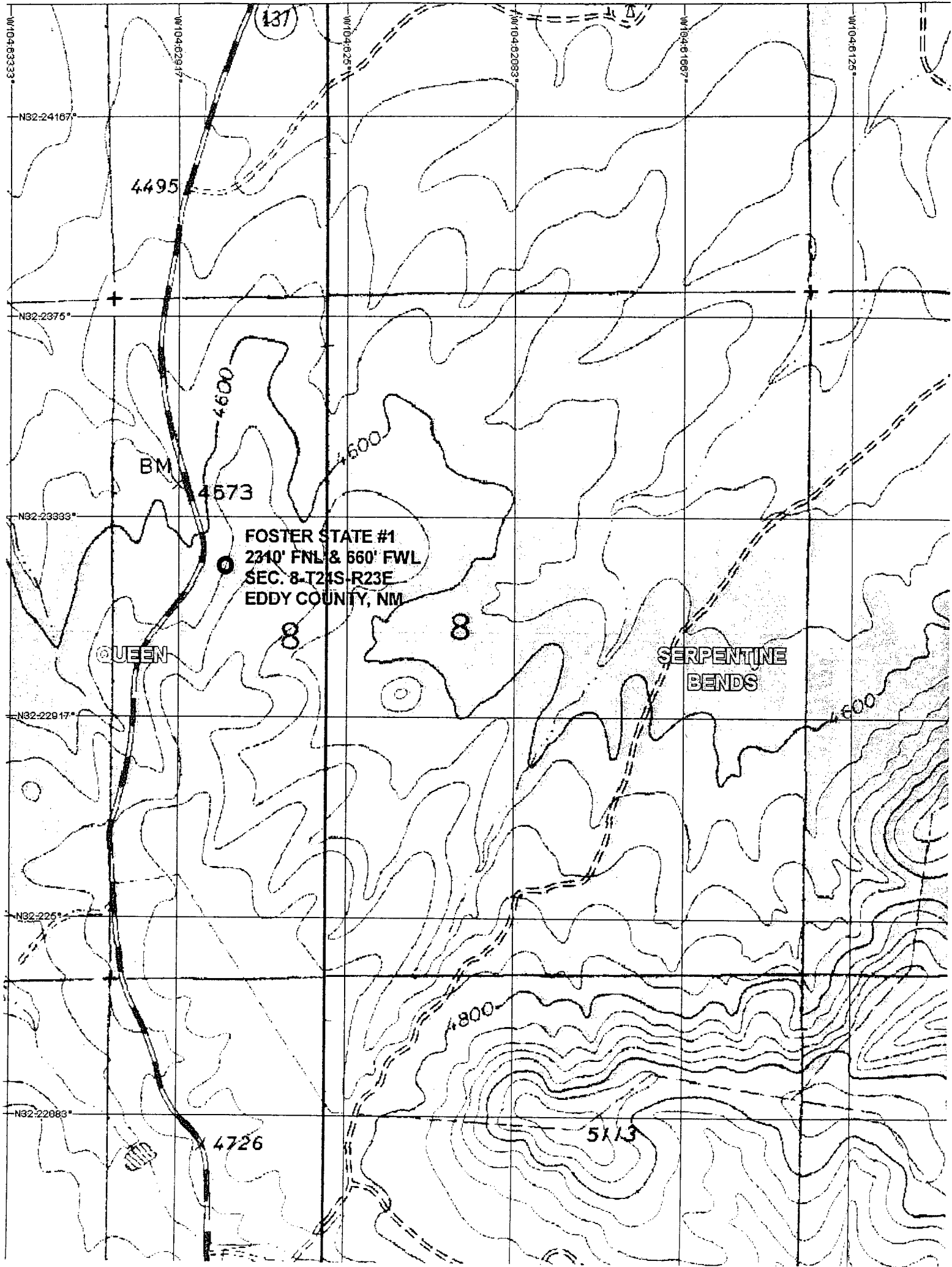
# BOP STACK



ARMSTRONG ENERGY CORPORATION

FOSTER STATE #1  
2130' FNL & 660' FWL  
SECTION 8-T24S-R23E  
EDDY COUNTY, NEW MEXICO

API No.: 30-015-21236



**Armstrong Energy Corporation**  
**Foster State #1**  
**2310' FNL & 660' FWL**  
**Section 8-T24S-R23E**  
**Eddy county, New Mexico**

**Reentry Procedure**  
**September 19, 2005**

1. Dig out cellar and install 8 5/8" 3000 psi W.P. S/O casinghead.
2. Rebuild location and highway access as necessary. Install "STOP" sign at the entrance to HWY 137 and "Trucks Turning" warning signs on either side of highway entrance.
3. Construct a 50' x 50' x 5' working pit with a 12 mil synthetic liner properly bedded to prevent punctures. Construct a 8' x 50' flare pit next to the reserve pit. Pit construction will conform to OCD Rule 19.15.2.50.
4. Move in and rig up drilling rig. Install drilling spool, double B.O.P. annular B.O.P. and choke manifold. Close blind rams and test casinghead, B.O.P. and choke manifold to 1000 psi.
5. P.U. 7 7/8" mill tooth bit and drill out surface plug from surface to 30 ft. P.U. nine (9) 6 1/2" drill collars and T.I.H. to 2730 ft. Circulate the hole clean and test B.O.P., choke manifold, drilling spool, casing (8 5/8"-24 lb./ft. J-55 casing, burst 2950 psi, collapse 1370 psi) and casinghead at 2000 psi. Test annular B.O.P. at 1500 psi. Install H<sub>2</sub>S monitoring equipment, windsocks and warning signs. (See H<sub>2</sub>S Contingency Plan for more details)
6. Drill out plug from 2730 to 2830 ft., check for loss or gain. T.I.H. to 4000 ft., drill out plug from 4000 to 4100 ft. T.I.H. to 6170 ft., drill out plug 6170 to 6270 ft. T.I.H. to 8850 ft., drill out plug 8850 to 8950 ft. Maintain mud weight at 9.3 PPG, 70,000 Cl, 34 vis, ph 10 and W.L. at 10 cc.
7. Clean out to T.D. at 9450 ft. Circulate hole and condition mud, Spot 100 BBL. pill on bottom with 45 vis., 9.3 ppg (weight as needed) and 10 cc W.L. P.O.H. for logs and cores.
8. Run G.R. log from T.D. to 7500 ft. cut sidewall cores at 9152, 9149, 9034, 9010, 9004, 8963, 8906, 8903, 8285, 8226, 7910, 7886, 7852, 7848 and 7826, total 15 cores. Correlate to Schlumberger CNL-FDC log dated 11-7-1974. Send cores to Core Lab in Midland, Texas for analysis.
9. T.I.H. and condition hole to run casing. Spot pill on bottom and come out of the hole laying down drillpipe and collars. P.U. float shoe, shoe joint, float collar and 5 1/2"-17 lb./ft. N-80 casing. Run centralizers from T.D. to 7600 ft., one on shoe joint and one on ever other collar, total 25 centralizers.

10. Cement with 600 sx. 50/50 Pozmix "H" with additives. T.O.C. at 6000 ft.
11. Set slips, cut off casing, and install tubinghead. R.D. and move off drilling rig.
12. Clean location, set anchors and prepare for completion.

DELAWARE 900'

BONE SPRING 1415'

3RD B.S. SAND 5930'

ATOKA 8850'  
MORROW 8865'

MISS 9400'

20" CONDUCTOR @ 44' CEMENTED  
30 FT. PLUG @ SURFACE

13 3/8"-48 #/FT. @ 375 FT.  
250 SX.  
CIRC. 75 SX.

**SOUTHWEST HESS PROSPECT**  
FOSTER STATE #1  
2310' FNL & 660 FWL  
SEC. 8-T24S-R23E  
EDDY COUNTY, NEW MEXICO

API NO.: 30-015-21236  
LEASE NO.: LG-0281

SPUD DATE : 8-30-74  
K.B.: 4590'

8 5/8"-24 #/FT. @ 2769 FT.  
1135 SX.  
TOC @ 380 FT., 1" W/ 135 SX, CIRC.  
35 SX PLUG 2730-2830 FT.

35 SX PLUG 4000-4100 FT.

7 7/8" HOLE

35 SX PLUG 6170-6270 FT.

35 SX PLUG 7800-7900 FT.  
DST STRAWN ???  
7815-7920'  
130 MCFG, FSIP 2986 PSI  
ZONES OF INTEREST  
STRAWN 7845-7866' & 7878-7932'

8850-8950, 35 SX. PLUG  
ZONES OF INTEREST  
MORROW 8898-8912', 8960-8966', 9002-9012'  
& 9146-9153'

T.D. 9450 FT.

**Armstrong Energy Corporation  
Foster State #1  
2310' FNL & 660' FWL  
Section 8-T24S-R23E  
Eddy county, New Mexico**

---

**Mud Program**

---

Surface to 2830 ft.	Fresh water with caustic for ph control, maintain a ph of 10.
2830 ft. to 6270 ft.	Raise weight to 9.3 ppg with brine, maintain a ph of 10 and lower water loss to 10 cc with starch.
6270 ft. to 9450 ft.	Maintain weight at 9.3 ppg, 70,000+ Cl, ph of 10, water loss of 10 cc and a vis of 34. (Adjust mud properties as well conditions dictate)

**Armstrong Energy Corporation  
Foster State #1  
2310' FNL & 660' FWL  
Section 8-T24S-R23E  
Eddy county, New Mexico**

**Hydrogen Sulphide (H<sub>2</sub>S) Contingency Plan**

The Foster State #1 was drilled in 1974 and did not report any zones containing H<sub>2</sub>S or abnormally pressured zones. Mud weight at T.D. was 9.2 ppg with a 32 vis, 7.4 cc fluid loss and a ph of 10.9. It is possible that zones in the San Andres, Glorietta and Yeso sequence and the Wolfcamp through Canyon sequence have bled into the wellbore and minor accumulations of gas and liquids containing H<sub>2</sub>S may be present in the wellbore and could be circulated to the surface during the cleanout of the wellbore. Sufficient mud weights will be utilized to prevent any flow from the well.

H<sub>2</sub>S monitoring, emergency response equipment, windsocks and warning signs will be installed and tested prior to drilling out the shoe of the 8 5/8" casing at 2769'.

**Site Description**

Th well location is located approximately 200 feet east of State Highway 137 halfway between mile markers 27 and 28. The location is cut into the side of a bluff with a steep hillside to the east and a +/- 10 foot drop off to the west along the highway. Predominately west winds will provide good air flow across location and away from Highway 137. Wind direction should be observed and escape routes modified for changing conditions.

**Radius of Exposure**

The 100 ppm radius of exposure is calculated to be 276 ft. with a gas flow of 100,000 SCFGD and a concentration of H<sub>2</sub>S of 5.0%.

$$X = [1.589 \times .05 \times 100,000]^{0.6258} = 276 \text{ feet}$$

X	Radius of Exposure, 100 ppm
.05	5% by volume concentration of H <sub>2</sub> S
100,000	SCFGD

**Emergency Plan**

In the event of a release of gas containing H<sub>2</sub>S the first responder must secure the area and prevent entry of other persons into the 100 ppm radius of exposure (ROE). The ROE should be recalculated and any public places within the ROE must be evacuated.

Evacuation from location shall be upwind of the escaping gas. Escape is via entry onto State Highway 137. At the predetermined meeting point all personnel on location will be accounted for. Teams will be organized to stop traffic on Highway 137 and prevent entry into the ROE.

Any responders entering the ROE for rescue or in order to control the release must be trained in the detection of H<sub>2</sub>S, measures for the protection against H<sub>2</sub>S, have the necessary equipment for protection and emergency response. The responders must be equipped with H<sub>2</sub>S monitors and air packs in order to enter the ROE area in order to attempt rescue or to control the release. The "Buddy System" will be used to insure the safety of the responders.

Company and local officials must be contacted to aid in the evacuation, control and remediation of an event. The following call list of essential and potential responders for use during a release.

<u>Location</u>	<u>Entity</u>	<u>Phone No.:</u>
Carlsbad	Sheriff's office	505-887-7551
Carlsbad	State Police	505-885-3137
Artesia	New Mexico Oil Conservation Division	505-748-1283
	Ambulance	911
Carlsbad	Fire Department	505-885-2111
Artesia	Fire Department	505-746-2701
Carlsbad	Local Emergency Planning Committee	505-887-3798
Roswell	Armstrong Energy Corporation Robert Armstrong - President Bruce Stubbs - Engineer	O-505-625-2222 H-505-622-0429 O-505-624-2800 H-505-623-6466 C-505-626-0973
<b><u>Other Contacts</u></b>		
Artesia	Haliburton Services	505-746-2757
Artesia	Sweatt Construction, Inc.	505-748-1238
Hobbs	Nova Mud, Inc.	505-393-8786
Artesia	Indian Fire & Safety, Inc.	505-746-4660
Odessa, TX	Wild Well Control, Inc.	432-550-6202
Odessa, TX	Cudd Pressure Control, Inc.	432-563-3356
Lubbock, TX	Flight for Life	806-743-9911
Albuquerque, NM	Med Flight Air Ambulance	505-842-4433

Should ignition of the gas flow become necessary, coordination between the OCD, State Police, company officials and local officials will be done prior to intentional ignition. The byproduct of combustion of H<sub>2</sub>S is sulphur dioxide a potentially toxic gas. All responders must take the necessary precautions to protect against this gas.

<b><u>Gas Characteristics</u></b>					
<b>Name</b>	<b>Chemical Formula</b>	<b>S.G. Air=1.0 *</b>	<b>Threshold Limit</b>	<b>Hazardous Limit</b>	<b>Lethal Concentration</b>
Hydrogen Sulphide	H <sub>2</sub> S	1.89	10 ppm	100 ppm/hr.	600 ppm
Sulfur Dioxide	SO <sub>2</sub>	2.21	2 ppm		1000 ppm
* Caution - Gases are heavier than air and will concentrate in low confined areas.					

NO. OF COPIES RECEIVED	1
DISTRIBUTION	
SANTA FE	
FILE	<input checked="" type="checkbox"/>
U.S.G.S.	
LAND OFFICE	
OPERATOR	

NEW MEXICO OIL CONSERVATION COMMISSION

JUN 3 1974

O. C. C.  
ARTESIA, OFFICE

30-015-21236

Form C-101  
Revised 1-1-65

5A. Indicate Type of Lease	
STATE <input checked="" type="checkbox"/>	FEE <input type="checkbox"/>
5. State Oil & Gas Lease No.	
LG-0281	

APPLICATION FOR PERMIT TO DRILL, DEEPEN, OR PLUG BACK

1a. Type of Work		7. Unit Agreement Name	
b. Type of Well DRILL <input checked="" type="checkbox"/> DEEPEN <input type="checkbox"/> PLUG BACK <input type="checkbox"/>		8. Farm or Lease Name	
OIL WELL <input type="checkbox"/> GAS WELL <input checked="" type="checkbox"/> OTHER <input type="checkbox"/>		Foster State	
2. Name of Operator		9. Well No.	
INEXCO OIL COMPANY		1	
3. Address of Operator		10. Field and Pool, or Wildcat	
1100 Milam Building, Suite 1900, Houston, Texas 77002		Wildcat	
4. Location of Well		12. County	
UNIT LETTER E LOCATED 2310 FEET FROM THE North LINE		Eddy	
AND 660 FEET FROM THE West LINE OF SEC. 8 TWP. 24S RGE. 23E NMPM			
19. Proposed Depth		19A. Formation	20. Rotary or C.T.
10,800'		Morrow	Rotary
21. Elevations (Show whether DF, RT, etc.)	21A. Kind & Status Plug. Bond	21B. Drilling Contractor	22. Approx. Date Work will start
Est. GL 4575', KB 4590'	Blanket on file	Undetermined	July 1, 1974

23.

PROPOSED CASING AND CEMENT PROGRAM

SIZE OF HOLE	SIZE OF CASING	WEIGHT PER FOOT	SETTING DEPTH	SACKS OF CEMENT	EST. TOP
17-1/2"	13-3/8"	48#	350'	300	Surface
12-1/4"	8-5/8"	24#	2,800'	1,000	Surface
7-7/8"	5-1/2"	15.5 & 17#	10,800'	300	9,200'

It is proposed to drill to a total depth of 10,800' with rotary tools. New casing will be set and cemented as indicated above. Proper blowout prevention equipment will be set, tested, and periodically checked. Prudent drilling and safety procedures will be employed during all operations.

APPROVAL VALID  
FOR 90 DAYS UNLESS  
DRILLING COMMENCED,

EXPIRES 9-4-74

IN ABOVE SPACE DESCRIBE PROPOSED PROGRAM: IF PROPOSAL IS TO DEEPEN OR PLUG BACK, GIVE DATA ON PRESENT PRODUCTIVE ZONE AND PROPOSED NEW PRODUCTIVE ZONE. GIVE BLOWOUT PREVENTER PROGRAM, IF ANY.

I hereby certify that the information above is true and complete to the best of my knowledge and belief.

Signed W. A. Elstrom W. A. Elstrom Drilling Engineer Date May 14, 1974

(This space for State Use)

APPROVED BY W. A. Elstrom TITLE OIL AND GAS INSPECTOR DATE JUN 4 1974

CONDITIONS OF APPROVAL, IF ANY:

Cement must be circulated to surface behind 13 3/8" casing the 8 5/8"

Notify N.M.O.C.C. in sufficient time to witness cementing

**NEW MEXICO OIL CONSERVATION COMMISSION  
WELL LOCATION AND ACREAGE DEDICATION**

Form C-102  
Supersedes C-128  
Effective 1-1-65

All distances must be from the outer boundaries of the Section

Operator <b>Inexco Oil Company</b>			Lease <b>Foster State</b>		Well No. <b>1</b>
Unit Letter <b>E</b>	Section <b>8</b>	Township <b>24 South</b>	Range <b>23 East</b>	County <b>Eddy</b>	
Actual Footage Location of Well: <b>1980</b> feet from the <b>North</b> line and <b>660</b> feet from the <b>West</b> line					
Ground Level Elev. <b>4631.8</b>	Producing Formation <b>Morrow</b>	Pool <b>Wildcat</b>	Dedicated Acreage <b>320</b> Acres		

1. Outline the acreage dedicated to the subject well by colored pencil or hachure marks on the plat below.
2. If more than one lease is dedicated to the well, outline each and identify the ownership thereof (both as to working interest and royalty)
3. If more than one lease of different ownership is dedicated to the well, have the interests of all owners been consolidated by communitization, unitization, force-pooling, etc?

☐ Yes ☐ No If answer is "yes," type of consolidation \_\_\_\_\_

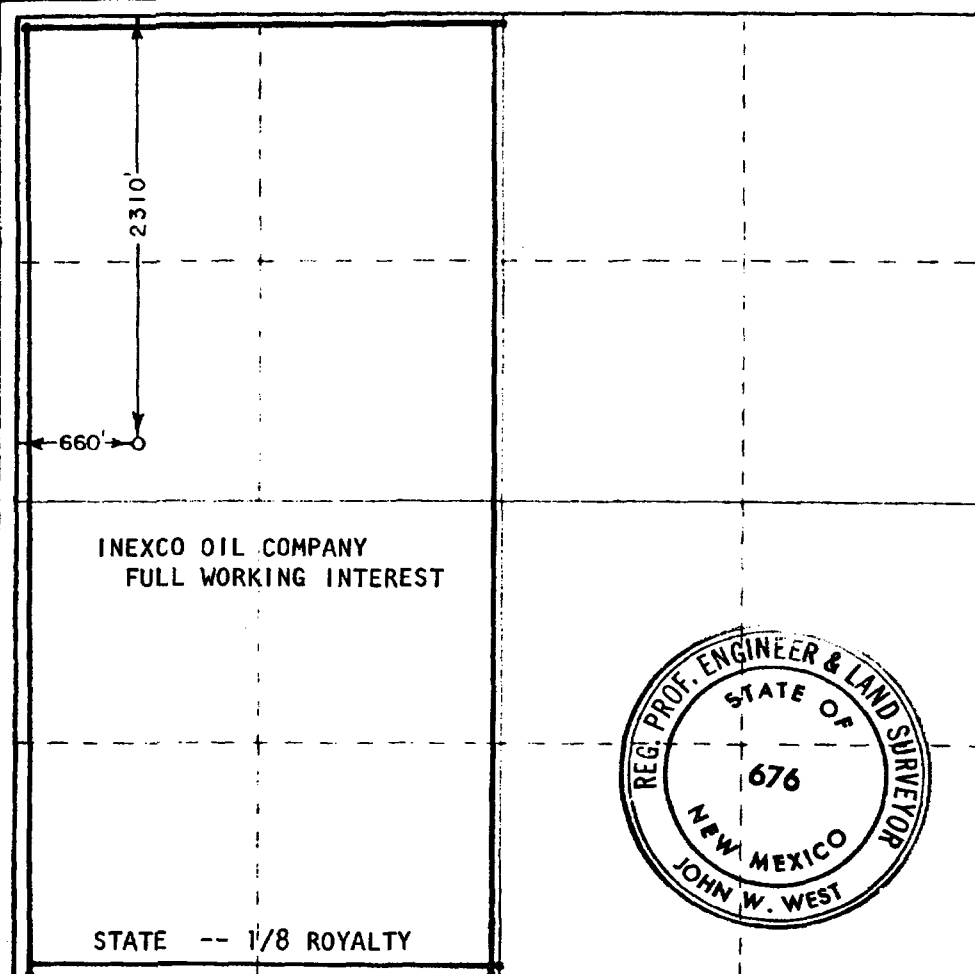
**JUN 3 1974**

If answer is "no," list the owners and tract descriptions which have actually been consolidated (the reverse side of this form if necessary.) \_\_\_\_\_

No allowable will be assigned to the well until all interests have been consolidated (by communitization, unitization, forced-pooling, or otherwise) or until a non-standard unit, eliminating such interests, has been approved by the Commission.

**RECEIVED**

**O.C.C.  
ARTESIA, OFFICE**



**CERTIFICATION**

I hereby certify that the information contained herein is true and complete to the best of my knowledge and belief.

*Terry W. Ellstrom*  
Name

**Terry W. Ellstrom**

Position

**Drilling Engineer**

Company

**INEXCO OIL COMPANY**

Date

**May 28, 1974**

I hereby certify that the well location shown on this plat was plotted from field notes of actual surveys made by me or under my supervision, and that the same is true and correct to the best of my knowledge and belief.

Date Surveyed

**May 9, 1974**

Registered Professional Engineer and Land Surveyor

*John W. West*  
Certificate No.

**676**

NO. OF COPIES RECEIVED	3
DISTRIBUTION	
SANTA FE	1
FILE	1
U.S.G.S.	
LAND OFFICE	
OPERATOR	1

NEW MEXICO OIL CONSERVATION COMMISSION

RECEIVED

SEP - 9 1974

Form C-103  
Supersedes Old  
C-102 and C-103  
Effective 1-1-65

5a. Indicate Type of Lease	
State <input checked="" type="checkbox"/>	Fee <input type="checkbox"/>
5. State Oil & Gas Lease No.	
LG - 0281	
7. Part Agreement Date	
None	
8. Term or Lease Date	
Foster State	
9. Well No.	
1	
10. Field and Pool, or Wildcat	
Wildcat	
12. County	
Eddy	

**SUNDY NOTICES AND REPORTS ON WELLS**  
(DO NOT USE THIS FORM FOR PROPOSALS TO DRILL OR TO DEEPEN OR PLUG BACK TO A LIFE WELL. USE "APPLICATION FOR PERMIT -" (FORM C-101) FOR SUCH PROPOSALS.)

**O. C. C. ARTESIA OFFICE**

1. OIL WELL <input type="checkbox"/> GAS WELL <input checked="" type="checkbox"/> OTHER <input type="checkbox"/>	2. Name of Operator
	INEXCO OIL COMPANY ✓
3. Address of Operator	
	1100 Milam Bldg., Suite 1900, Houston, Texas 77002
4. Location of Well	
UNIT LETTER <u>E</u> <u>2,310</u> FEET FROM THE <u>North</u> LINE AND <u>660</u> FEET FROM THE <u>West</u> LINE SECTION <u>8</u> TOWNSHIP <u>24S</u> RANGE <u>23E</u> NEQU.	
15. Elevation (Show whether DF, RT, CR, etc.)	
GL 4,576', KB 4,590'	

16. Check Appropriate Box To Indicate Nature of Notice, Report or Other Data

NOTICE OF INTENTION TO:		SUBSEQUENT REPORT OF:	
PERFORM REMEDIAL WORK <input type="checkbox"/>	PLUG AND ABANDON <input type="checkbox"/>	REMEDIAL WORK <input type="checkbox"/>	ALTERING CASING <input type="checkbox"/>
TEMPORARILY ABANDON <input type="checkbox"/>	CHANGE PLANS <input type="checkbox"/>	COMMENCE DRILLING OPER. <input checked="" type="checkbox"/>	PLUG AND ABANDONMENT <input type="checkbox"/>
PULL OR ALTER CASING <input type="checkbox"/>	OTHER <input type="checkbox"/>	CASING TEST AND CEMENT JOB <input checked="" type="checkbox"/>	
		OTHER <input type="checkbox"/>	

17. Describe Proposed or Completed Operations. (Clearly state all pertinent details, and give pertinent dates, including estimated date of starting any proposed work) SEE RULE 1103.

8/14/74 Set 30' of 20" conductor @ 44' KBM & cmtd to surface w/2 yards ready mix.

8/30/74 Finished moving in & rigging up rotary tools. Spudded 17½" hole below 20" conductor at 12:00 noon MDT, 8/30/74.

9/02/74 Completed drilling 17½" hole to 375'. Ran 8 joints 13-3/8", 48#, H-40, 8R, STC, R-3, new casing. Set casing at 375' and cemented to surface with 200 sx Trinity Lite Wate, 7½% salt, 3% gel, 3#/sk Gilsonite, ¼#/sk Celloflake & 100 sx Class "C", 2% CaCl₂. Circulated 75 sx excess. Plug down at 8:30 PM, MDT, 9/2/74.

9/3/74 Nippled up BOP equipment. Drilled out float collar & 35' cement. Pressure tested Hydril & 13-3/8" casing to 500 psi. Drilled guide shoe. Drilled 12¼" hole out below 13-3/8" casing at 13:45 PM, MDT, 9/3/74.

18. I hereby certify that the information above is true and complete to the best of my knowledge and belief.

SIGNED Terry W. Elstrom TITLE Drilling Engineer DATE 9/4/74

APPROVED BY W. A. Gussett TITLE OIL AND GAS INSPECTOR DATE SEP 9 1974

CONDITIONS OF APPROVAL, IF ANY:

BENNETT WIRE LINE SERVICE

305 McARTHUR  
ARTESIA, NEW MEXICO 88210  
Phone 746-3281

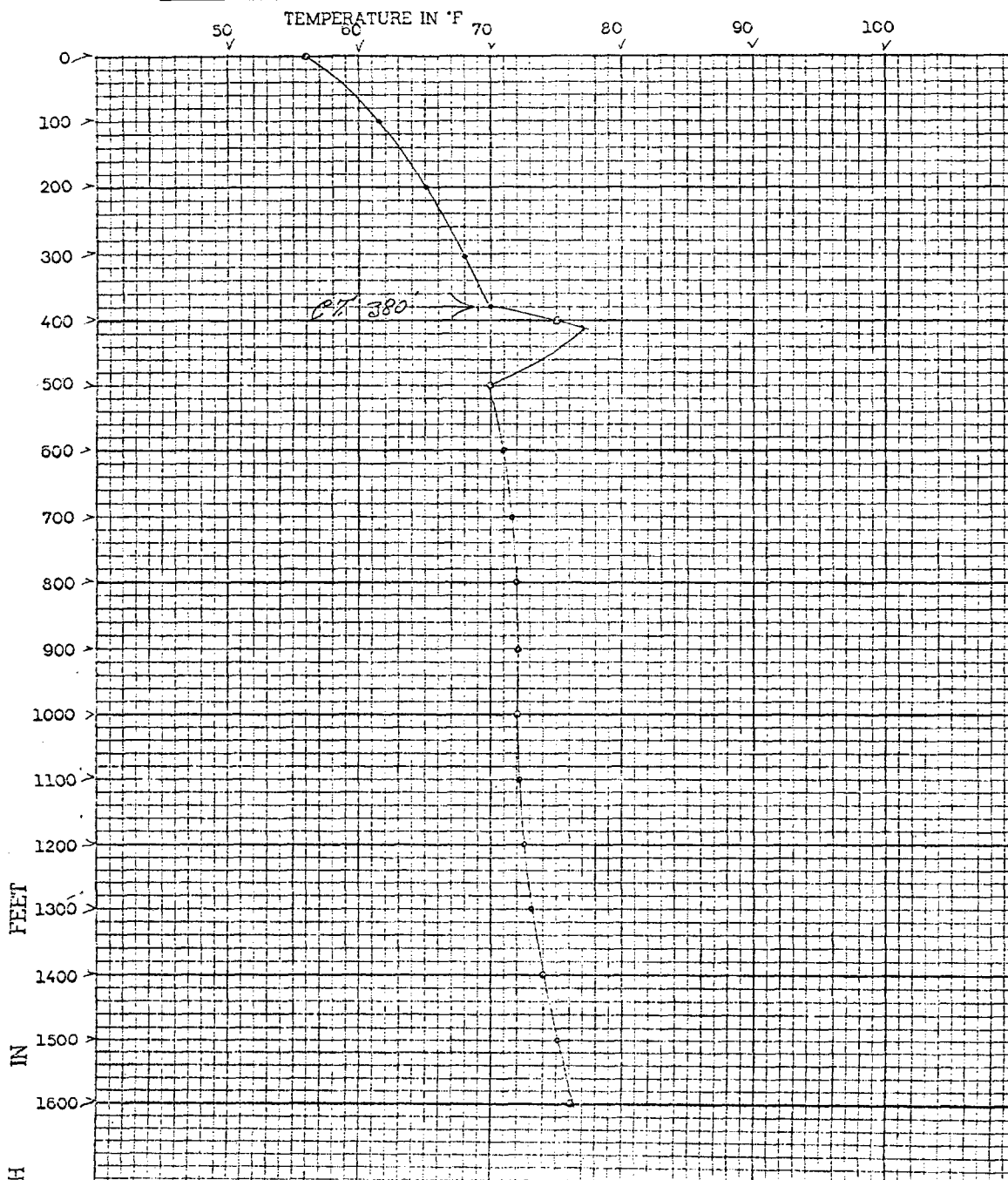
# TEMPERATURE SURVEY

RECEIVED

SEP 23 1974

OPERATOR INEXCO OIL COMPANY  
LEASE Foster State  
WELL NO. 1  
FIELD \_\_\_\_\_  
DATE & TIME CEMENT JOB COMPLETED \_\_\_\_\_  
DATE & TIME SURVEY MADE 9/10/74 2:00 AM.  
SURVEY RUN BY Bennett  
DATUM \_\_\_\_\_  
WELL DATA CT. 380 Ft.

O. C. C.  
ARTESIA, OFFICE



N. OF COPIES RECEIVED	3
DISTRIBUTION	
SANTA FE	1
FILE	1
U.S.G.S.	
LAND OFFICE	
OPERATOR	1

**RECEIVED**  
NEW MEXICO OIL CONSERVATION COMMISSION

SEP 16 1974

**O. C. C.**  
**ARTESIA, OFFICE**

Supervisor  
Cedar and Oak  
New Mexico

WELL NO.	16-0281
WELL TYPE	None
WELL STATUS	Forster State
WELL DEPTH	1
WELL LOCATION	Wildcat
WELL NAME	Eddy

**SUNDY NOTICES AND REPORTS ON WELLS**  
(DO NOT USE THIS FORM FOR SUNDY NOTICES OR REPORTS ON WELLS THAT ARE NOT IN THE STATE OF NEW MEXICO.)

1. OIL WELL	2. GAS WELL	3. OTHER
4. Name of Operator	Inexco Oil Company	
5. Address of Operator	1100 Milan Bldg. Suite 1900, Houston, Texas 77002	
6. Location of Well	UNIT LETTER E 2310 North 66	
7. THE	8. 24S	9. 23E
10. Show whether GL, NI, GR, or other		
GL 4576' ; KB 4590'		

Check Appropriate Box To Indicate Nature of Notice, Report or Other Data  
NOTICE OF INTENTION TO: SUBSEQUENT REPORT OF:

PERFORM REMEDIAL WORK	PLUG AND ABANDON	REPAIR WORK	ALTERED Casing
TEMPORARY ABANDON	CHANGE CLASS	CONDUIT REPAIR WORK	REPAIR AND REABANDONMENT
PULL OR ALTER CASING	OTHER	EXCESSIVE AND EXCESSIVE	OTHER

17. Describe the work done on the well, including all pertinent details, and give pertinent dates, including estimated date of starting any proposed work. SEE RULE 123.

- 9/9/74 Completed drilling 12 1/4" hole to 2769'. Ran 62 joints 8-5/8", 24#, K-55, 3R, STC, R-3, new casing. Set casing @ 2769' and cemented with 800 sx Trinity Lite Mate, 3% gel, 7 1/2% salt, 3# / sk gilsonite, 1/2# / sk Celloflake (12 ppg, 1.99 CF/SK) and 200 sx Class "C", 2% CaCl<sub>2</sub> (14.8 ppg, 1.32 CF/SK). Cement did not circulate. Plug down @ 8:00 PM, MDT, 9-9-74.
- 9/10/74 Ran temperature survey. Cement top 380'. Ran 1" pipe to 380'. Cemented to surface with 135 sx Class "C", 2% CaCl<sub>2</sub> (14.8 ppg, 1.32 CF/SK). Circulated excess of 20 sx. Job completed @ 6:00 AM, 9-10-74. Set 8-5/8" casing or slips. Cut off casing. NU casing head spool. Pressure tested spool to 1400 psi. NU dual BOP's and Hydril. Pressure tested BOP's and surface connections to 3000 psi and Hydril to 2,000 psi. Picked up bit, bottom hole reamer, 2 stabilizers at 34' and 64', 27 drill collars and 4 1/2" drill pipe.
- 9/11/74 Drilled out cement and float collar. Pressure tested casing to 1400 psi. Drilled out cement and guide shoe. Drilled out below 8-5/8" intermediate casing with 7-7/8" bit at 6:45 AM, MDT, 9-11-74.

18. I hereby certify that the information above is true and complete to the best of my knowledge and belief.

Signed Terry W. Ellstrom Drilling Engineer

9/12/74

**For Record Only**

APPROVED BY

**OIL AND GAS INSPECTOR**

SEP 16 1974

CONDITIONS OF APPROVAL, IF ANY:

NO. OF COPIES RECEIVED	3
DISTRIBUTION	
SANTA FE	
FILE	1 -
U.S.G.S.	
LAND OFFICE	
OPERATOR	

NEW MEXICO OIL CONSERVATION COMMISSION

Form C-103  
Supersedes Old  
C-102 and C-103  
Effective 1-1-65

RECEIVED

DEC 23 1974

SUNDRY NOTICES AND REPORTS ON WELLS

DO NOT USE THIS FORM FOR PROPOSALS TO DRILL OR TO DEEPEN OR PLUG BACK TO A DIFFERENT RESERVOIR.  
USE "APPLICATION FOR PERMIT" (FORM C-101) FOR SUCH PROPOSALS.

1. OIL WELL <input type="checkbox"/> GAS WELL <input type="checkbox"/> OTHER- Dry Hole		5a. Indicate Type of Lease State <input checked="" type="checkbox"/> Fee <input type="checkbox"/>
2. Name of Operator Inexco Oil Company		5. State Oil & Gas Lease No. LG 0281
3. Address of Operator 1100 Milam Bldg., Suite 1900, Houston, Texas 77002		7. Unit Agreement Name None
4. Location of Well UNIT LETTER E 2310 FEET FROM THE North LINE AND 660 FEET FROM THE West LINE, SECTION 8 TOWNSHIP 24S RANGE 23E NMPLA.		8. Farm or Lease Name Foster State
15. Elevation (Show whether DF, RT, GR, etc.) GL 4576'; KB 4590'		9. Well No. 1
		10. Field and Pool, or Wildcat Wildcat
		12. County Eddy

Check Appropriate Box To Indicate Nature of Notice, Report or Other Data  
NOTICE OF INTENTION TO:

PERFORM REMEDIAL WORK ☐  
TEMPORARILY ABANDON ☐  
PULL OR ALTER CASING ☐  
OTHER ☐

PLUG AND ABANDON ☐  
CHANGE PLANS ☐  
OTHER ☐

SUBSEQUENT REPORT OF:

REMEDIAL WORK ☐  
COMMENCE DRILLING OPS. ☐  
CASING TEST AND CEMENT JOB ☒  
OTHER ☐

ALTERING CASING ☐  
PLUG AND ABANDONMENT ☐

17. Describe Proposed or Completed Operations (Clearly state all pertinent details, and give pertinent dates, including estimated date of starting any proposed work) SEE RULE 1103.

9/10/74 Completed drilling 12 1/4" hole to 2769' with rotary rig. Ran 8-5/8", 24#/ft., K-55, 8rd, ST&C R-3 casing to 2769'. Cemented with 800 sacks of Trinity Lite Wate, 3% gel, 7 1/2% salt, 3# gilsonite, 1/4#/sx. cello flake mixed to a slurry of 12 ppg w/a yield of 1.99 Cu.Ft./Sx. Tailed in with 200 sxs. of Class "C" + 2% CaCl<sub>2</sub> mixed to a slurry volume of 14.8 ppg. Cement did not circulate. WOC 6 1/2 hrs. and ran a temperature survey. Cement top 380'. Ran 1" and cement to surface with 135 sxs of Class "C" plus 2% CaCl<sub>2</sub>.

9/11/74 Tested BOPs and choke manifold to 3000 psi and hydril to 2000 psi w/Yellow Jacket Test ing Service. Tested 8-5/8" casing to 1500 psi.

18. I hereby certify that the information above is true and complete to the best of my knowledge and belief.

SIGNED Joel A. Guichard

TITLE Drilling Superintendent

DATE 12/18/74

APPROVED BY For Record Only

TITLE SUPERVISOR, DISTRICT II

DATE JAN 13 1975

CONDITIONS OF APPROVAL, IF ANY:

## INCLINATION REPORT

Field Name \_\_\_\_\_ County Eddy  
Operator Inexco Oil Company Address 1100 Milam Bldg. City Houston  
Suite 1900  
Lease Name & No. Foster State Well No. 1 Survey

## RECORD OF INCLINATION

[illegible]

Total Displacement 481.20

~~Operator~~ Affidavit:

(Note: Party making affidavit must strike out inapplicable phrases, and must file explanatory statement when applicable.)

Before me, the undersigned authority, on this day, personally appeared \_\_\_\_\_, known to me to be the person whose name is subscribed hereto, who, after being duly sworn, on oath states that he is the operator of the well identified in this instrument (that he is acting at the direction and on behalf of the operator of the well identified in this instrument), and that such well was not intentionally deviated from the vertical whatsoever, (and that such well was deviated at random for the reason described in the attached statement).

Signature and Title of Affiant

Sworn and Subscribed to before me, this the \_\_\_\_\_ day of \_\_\_\_\_  
19\_\_\_\_.

Notary Public in and for  
County, Texas.

Certification of personal knowledge Inclination Data:

I hereby certify that I have personal knowledge of the data and facts placed on this form, and that such information given above is true and complete.

SIGNATURE Joel A. Guichard  
Joel A. Guichard

COMPANY INEXCO OIL COMPANY

### INCLINATION REPORT

Field Name \_\_\_\_\_ County Eddy  
Operator Inexco Oil Company Address 1100 Milam Bldg. City Houston  
Suite 1900  
Lease Name & No. Foster State Well No. 1 Survey \_\_\_\_\_

## RECORD OF INCLINATION

[illegible]

~~RECEIVED~~

~~JAN 10 1975~~

0-0-0

ARTERIA. DEUTER-

Total Displacement 481.20

~~Operator Affidavit:~~

(Note: Party making affidavit must strike out inapplicable phrases, and must file explanatory statement when applicable.)

~~Before me, the undersigned authority, on this day, personally appeared \_\_\_\_\_, known to me to be the person whose name is subscribed hereto, who, after being duly sworn, on oath states that he is the operator of the well identified in this instrument (that he is acting at the direction and on behalf of the operator of the well identified in this instrument), and that such well was not intentionally deviated from the vertical whatsoever, (and that such well was deviated at random for the reason described in the attached statement).~~

Signature and Title of Affiant

Sworn and Subscribed to before me, this the \_\_\_\_\_ day of \_\_\_\_\_

Notary Public in and for  
County, Texas.

Certification of personal knowledge Inclination Data:

I hereby certify that I have personal knowledge of the data and facts placed on this form, and that such information given above is true and complete.

~~SIGNATURE~~

Joel A. Guichard

COMPANY INEXCO OIL COMPANY

[illegible]

FLUID SAMPLE DATA				Date 10-27-74		Ticket Number 897410	
Sampler Pressure 200 P.S.I.G. at Surface Recovery: Cu. Ft. Gas 1.23 cc. Oil _____ cc. Water _____ cc. Mud Trace Tot. Liquid cc. _____ Gravity _____ ° API @ _____ ° F. Gas/Oil Ratio _____ cu. ft./bbl. RESISTIVITY                      CHLORIDE CONTENT				Kind of Job OPEN HOLE Halliburton District ARTESIA Tester MR. GULLEY                      Witness MR. B. SMITH Drilling Contractor MC VAY DRILLING COMPANY                      SM S			
EQUIPMENT & HOLE DATA							
Formation Tested Strawn				Elevation 4575' Ft.			
Net Productive Interval 9' Ft.				All Depths Measured From Kelly bushing 15'			
Total Depth 7920' Ft.				Main Hole/Casing Size 7 7/8"			
Drill Collar Length 647' I.D. 2.25"				Drill Pipe Length 7113' I.D. 3.826"			
Packer Depth(s) 7809-7815' Ft.				Depth Tester Valve 7777' Ft.			
TYPE		AMOUNT		Depth Back		Surface	
Cushion				Ft. Pres. Valve		Choke 1" Adj. Bottom Choke .75"	
Recovered 900		Feet of drilling fluid		<div style="border: 1px solid black; padding: 10px; margin: 0 auto; width: 80%;"> <b>RECEIVED</b>   <b>JAN 10 1975</b>   <b>O. C. C.</b>  <b>ARTESIA, OFFICE</b> </div>			
Recovered		Feet of					
Recovered		Feet of					
Recovered		Feet of					
Recovered		Feet of					
Remarks Tool opened for 15 minute first flow period with a light blow building to good...opened choke. Closed tool for 59 minute first closed in pressure period with gas to the surface in 25 minutes. Tool reopened for 60 minute second flow with a good blow building - opened choke. Closed tool for 60 minute second closed in pressure. Tool reopened for 45 minute third flow -choke open, pressure building to maximum of 90 psi. Closed tool for 121 minute third CIP period.							
TEMPERATURE		Gauge No. 512		Gauge No. 113		Gauge No.	
Depth: 7791' Ft.		Depth: 7916' Ft.		Depth: _____ Ft.		TIME	
Est. _____ ° F.		12 Hour Clock		24 Hour Clock		Hour Clock	
Blanked Off no		Blanked Off yes		Blanked Off		Tool A.M.	
Actual 145 ° F.		Pressures		Pressures		Pressures	
		Field Office		Field Office		Field Office	
Initial Hydrostatic		3527 3567		3581 3625		Reported Computed	
First Period Flow Initial		220 250		268 280		Minutes Minutes	
Final		179 192		188 215		15 15	
Closed in		2574 2668		2661 2690		60 59	
Second Period Flow Initial		151 180		161 173		60 60	
Final		247 271		282 279		60 60	
Closed in		2817 2827		2832 2861		60 60	
Third Period Flow Initial		165 179		161 178		45 45	
Final		261 283		282 291		120 121	
Closed in		2924 2969		2950 2986			
Final Hydrostatic		3513 3556		3581 3607			

Legal Location Sec. - Twp. - Rng. 8 24 23  
 Lease Name  
 Field Area  
 Meq. From Tester Valve  
 County  
 State NEW MEXICO

FOSTER STATE  
 Well No. 1  
 Test No. 1  
 Tested Interval 7815 - 7920'  
 INEXCO OIL COMPANY  
 Lease Owner/Company Name

NO. COPIES RECEIVED	6
DISTRIBUTION	
SANTA FE	1
FILE	1
U.S.G.S.	2
LAND OFFICE	1
OPERATOR	

Form C-105  
Revised 1-1-65

NEW MEXICO OIL CONSERVATION COMMISSION  
WELL COMPLETION OR RECOMPLETION REPORT AND LOG  
**RECEIVED**

5a. Indicate Type of Lease	
State <input checked="" type="checkbox"/>	Fee <input type="checkbox"/>
5. State Oil & Gas Lease No.	
LG	0281

*Burns & McLean* DEC 23 1974

1a. TYPE OF WELL	
OIL WELL <input type="checkbox"/>	GAS WELL <input type="checkbox"/> DRY <input checked="" type="checkbox"/> OTHER <input type="checkbox"/>
b. TYPE OF COMPLETION	
NEW WELL <input checked="" type="checkbox"/> WORK OVER <input type="checkbox"/> DEEPEN <input type="checkbox"/>	PLUG BACK <input type="checkbox"/> DIFF. RESVR. <input type="checkbox"/> OTHER <input type="checkbox"/>

7. Unit Agreement Name	None
8. Farm or Lease Name	Foster State
9. Well No.	1
10. Field and Pool, or Wildcat	Wildcat

2. Name of Operator	Inexco Oil Company
---------------------	--------------------

3. Address of Operator	1100 Milam Bldg., Suite 1900, Houston, Texas 77002
------------------------	--

4. Location of Well	
---------------------	--

UNIT LETTER <u>E</u>	LOCATED <u>2310</u> FEET FROM THE <u>North</u> LINE AND <u>660</u> FEET FROM
THE <u>West</u> LINE OF SEC. <u>8</u> TWP. <u>24S</u> RGE. <u>23E</u> NMPM	

12. County	
------------	--

15. Date Spudded	16. Date T.D. Reached	17. Date Compl. (Ready to Prod.)	18. Elevations (DF, RKB, RT, GR, etc.)	19. Elev. Casinghead
8/30/74	11/07/74	P&A 11/8/74	GL 4576; KB 4590'	4576
20. Total Depth	21. Plug Back T.D.	22. If Multiple Compl., How Many	23. Intervals Drilled By	Rotary Tools Cable Tools
9450	P&A		Surface to TD	
24. Producing Interval(s), of this completion - Top, Bottom, Name				25. Was Directional Survey Made
None				No

26. Type Electric and Other Logs Run	27. Was Well Cored
DLL, FDC-NL and BHC-Sonic-GR	No

28. CASING RECORD (Report all strings set in well)					
CASING SIZE	WEIGHT LB./FT.	DEPTH SET	HOLE SIZE	CEMENTING RECORD	AMOUNT PULLED
20" Conductor		44		Cement to Surface	None
13-3/8"	48	375	17-1/2	Cement w/250 sxs	None
8-5/8"	24	2769	12-1/4	Cement w/1135 sxs	None

29. LINER RECORD				30. TUBING RECORD			
SIZE	TOP	BOTTOM	SACKS CEMENT	SCREEN	SIZE	DEPTH SET	PACKER SET

31. Perforation Record (Interval, size and number)				32. ACID, SHOT, FRACTURE, CEMENT SQUEEZE, ETC.			
				DEPTH INTERVAL			
				AMOUNT AND KIND MATERIAL USED			

33. PRODUCTION							
Date First Production		Production Method (Flowing, gas lift, pumping - Size and type pump)				Well Status (Prod. or Shut-in)	
Date of Test	Hours Tested	Choke Size	Prod'n. For Test Period	Oil - Bbl.	Gas - MCF	Water - Bbl.	Gas-Oil Ratio
Flow Tubing Press.	Casing Pressure	Calculated 24-Hour Rate	Oil - Bbl.	Gas - MCF	Water - Bbl.	Oil Gravity - API (Corr.)	

34. Disposition of Gas (Sold, used for fuel, vented, etc.)	Test Witnessed By

35. List of Attachments

I hereby certify that the information shown on both sides of this form is true and complete to the best of my knowledge and belief.		
SIGNED <i>Paul A. Guichard</i>	TITLE <u>Drilling Superintendent</u>	DATE <u>12/17/74</u>

# INSTRUCTIONS

This form is to be filed with the appropriate District Office of the Commission not later than 20 days after the completion of any newly-drilled or deepened well. It shall be accompanied by one copy of all electrical and radio-activity logs run on the well and a summary of all special tests conducted, including drill stem tests. All depths reported shall be measured depths. In the case of directionally drilled wells, true vertical depths shall also be reported. For multiple completions, Items 30 through 34 shall be reported for each zone. The form is to be filed in quintuplicate except on state land, where six copies are required. See Rule 1105.

## INDICATE FORMATION TOPS IN CONFORMANCE WITH GEOGRAPHICAL SECTION OF STATE

### Southeastern New Mexico

### Northwestern New Mexico

T. Anhy _____	T. Canyon _____	T. Ojo Alamo _____	T. Penn. "B" _____
T. Salt _____	T. Strawn _____	T. Kirtland-Fruitland _____	T. Penn. "C" _____
B. Salt _____	T. Atoka <u>8850</u>	T. Pictured Cliffs _____	T. Penn. "D" _____
T. Yates _____	T. Miss Is <u>9400</u>	T. Cliff House _____	T. Leadville _____
T. 7 Rivers _____	T. Devonian _____	T. Menefee _____	T. Madison _____
T. Queen _____	T. Silurian _____	T. Point Lookout _____	T. Elbert _____
T. Grayburg _____	T. Montoya _____	T. Mancos _____	T. McCracken _____
T. San Andres _____	T. Simpson _____	T. Gallup _____	T. Ignacio Qtzte _____
T. Glorieta _____	T. McKee _____	Base Greenhorn _____	T. Granite _____
T. Paddock _____	T. Ellenburger _____	T. Dakota _____	T. _____
T. Blinebry _____	T. Gr. Wash _____	T. Morrison _____	T. _____
T. Tubb _____	T. Granite _____	T. Todilto _____	T. _____
T. Drinkard _____	T. Delaware Sand <u>900</u>	T. Entrada _____	T. _____
T. Abo _____	T. Bone Springs <u>1415</u>	T. Wingate _____	T. _____
T. Wolfcamp _____	T. 3rd Bone Springs <u>5930</u>	T. Chinle _____	T. _____
T. Penn. _____	T. Morrow <u>8865</u>	T. Permian _____	T. _____
T. Cisco (Bough C) _____	T. _____	T. Penn. "A" _____	T. _____

## FORMATION RECORD (Attach additional sheets if necessary)

From	To	Thickness in Feet	Formation	From	To	Thickness in Feet	Formation
0	900	900	Limestone				
900	1400	500	Sandstone, Shaly, silty				
1400	2900	1500	Limestone				
2900	3100	200	Sandstone, Shaly				
3100	3700	600	Limestone, Shaly, Sandy				
3700	5900	2200	Limestone, Dense, Shaly				
5900	6200	300	Sandstone, Shaly				
6200	6600	400	Shaly, Limey				
6600	7100	500	Limestone, Shaly				
7100	7700	600	Dolomite				
7700	8600	900	Limestone, Shaly, Cherty				
8600	8850	250	Limestone, Sandy				
8850	9200	350	Limestone, Oolitic & Sandstone, Limey, Shaley Carbonaceous				
9200	9400	200	Shale, Limey				
9400	9450	50	Limestone, Shaley, Silty				
	9450						

TD

NO. OF COPIES RECEIVED	3
DISTRIBUTION	
SANTA FE	1
FILE	1
U.S.G.S.	
LAND OFFICE	
OPERATOR	1

# NEW MEXICO OIL CONSERVATION COMMISSION

Form C-103  
Supersedes Old  
C-102 and C-103  
Effective 1-1-65

5a. Indicate Type of Lease
State <input checked="" type="checkbox"/> Fee <input type="checkbox"/>
5. State Oil & Gas Lease No.
LG 0281

## SUNDRY NOTICES AND REPORTS ON WELLS (DO NOT USE THIS FORM FOR PROPOSALS TO DRILL OR TO DEEPEN OR PLUG BACK TO A DIFFERENT RESERVOIR. USE "APPLICATION FOR PERMIT" (FORM C-101) FOR SUCH PROPOSALS.)

1. OIL WELL <input type="checkbox"/> GAS WELL <input type="checkbox"/> OTHER: Dry Hole	7. Unit Agreement Name
2. Name of Operator	8. Farm or Lease Name
Inexco Oil Company	Foster State
3. Address of Operator	9. Well No.
1100 Milam Bldg., Suite 1900, Houston, Texas 77002	1
4. Location of Well	10. Field and Pool, or Wildcat
UNIT LETTER E, 2310 FEET FROM THE North LINE AND 660 FEET FROM	Wildcat
THE West LINE, SECTION 8 TOWNSHIP 24S RANGE 23E NMPM.	
15. Elevation (Show whether DF, RT, GR, etc.)	12. County
GL 4576'; KB 4590'	Eddy

RECEIVED

JAN 10 1975

O. C. C.

ARTERIA, OFFICE

## Check Appropriate Box To Indicate Nature of Notice, Report or Other Data NOTICE OF INTENTION TO:

PERFORM REMEDIAL WORK	<input type="checkbox"/>	PLUG AND ABANDON	<input checked="" type="checkbox"/>
TEMPORARILY ABANDON	<input type="checkbox"/>	CHANGE PLANS	<input type="checkbox"/>
PULL OR ALTER CASING	<input type="checkbox"/>	OTHER	<input type="checkbox"/>

## SUBSEQUENT REPORT OF:

REMEDIAL WORK	<input type="checkbox"/>	ALTERING CASING	<input type="checkbox"/>
COMMENCE DRILLING OPNS.	<input type="checkbox"/>	PLUG AND ABANDONMENT	<input type="checkbox"/>
CASING TEST AND CEMENT JOB	<input type="checkbox"/>	OTHER	<input type="checkbox"/>

17. Describe Proposed or Completed Operations: (Clearly state all pertinent details, and give pertinent dates, including estimated date of starting any proposed work) SEE RULE 1103.

It is proposed to P&A this well as a dry hole. Verbal approval was given to set the following plugs consisting of 35 sacks of cement each: 8950-8850'; 7900-7800'; 6270-6170'; 4100-4000' and 2830'-2730'. The final plug set from 30' to surface.

18. I hereby certify that the information above is true and complete to the best of my knowledge and belief.

SIGNED: <u>Joel A. Guichard</u>	TITLE: <u>Drilling Superintendent</u>	DATE: <u>1/8/75</u>
APPROVED BY: <u>W. A. Guichard</u>	TITLE: <u>SUPERVISOR, DISTRICT II</u>	DATE: <u>JAN 13 1975</u>
CONDITIONS OF APPROVAL, IF ANY:		

NO. OF COPIES RECEIVED	2
DISTRIBUTION	
SANTA FE	1
FILE	1
U.S.G.S.	
LAND OFFICE	
OPERATOR	1

# NEW MEXICO OIL CONSERVATION COMMISSION

Form C-103  
Supersedes Old  
C-102 and C-103  
Effective 1-1-65

5a. Indicate Type of Lease	
State <input checked="" type="checkbox"/>	Fee <input type="checkbox"/>
5. State Oil & Gas Lease No.	
LG	0281
7. Unit Agreement Name	
None	
8. Farm or Lease Name	
Foster State	
9. Well No.	
1	
10. Field and Pool, or Wildcat	
Wildcat	
12. County	
Eddy	

**SUNDRY NOTICES AND REPORTS ON WELLS**  
(DO NOT USE THIS FORM FOR PROPOSALS TO DRILL OR TO DEEPEN OR PLUG BACK TO A DIFFERENT RESERVOIR. USE "APPLICATION FOR PERMIT -" (FORM C-101) FOR SUCH PROPOSALS.)

1. ☐ OIL WELL ☐ GAS WELL ☐ OTHER- **Dry Hole**

2. Name of Operator **Inexco Oil Company**

3. Address of Operator **1100 Milam Bldg., Suite 1900, Houston, Texas 77002**

4. Location of Well **UNIT LETTER E 2310 FEET FROM THE North LINE AND 660 FEET FROM THE West LINE, SECTION 8 TOWNSHIP 24S RANGE 23E NMPM.**

15. Elevation (Show whether DF, RT, GR, etc.) **GL 4576'; KB 4590'**

**RECEIVED**

**JAN 10 1975**

**O. C. C. ARTESIA, DEPT.**

Check Appropriate Box To Indicate Nature of Notice, Report or Other Data

NOTICE OF INTENTION TO:

<input type="checkbox"/> PERFORM REMEDIAL WORK	<input type="checkbox"/> PLUG AND ABANDON
<input type="checkbox"/> TEMPORARILY ABANDON	<input type="checkbox"/> CHANGE PLANS
<input type="checkbox"/> PULL OR ALTER CASING	<input type="checkbox"/> OTHER

SUBSEQUENT REPORT OF:

<input type="checkbox"/> REMEDIAL WORK	<input type="checkbox"/> ALTERING CASING
<input type="checkbox"/> COMMENCE DRILLING OPNS.	<input checked="" type="checkbox"/> PLUG AND ABANDONMENT
<input type="checkbox"/> CASING TEST AND CEMENT JOB	<input type="checkbox"/> OTHER

17. Describe Proposed or Completed Operations (Clearly state all pertinent details, and give pertinent dates, including estimated date of starting any proposed work) SEE RULE 1103.

11/8/74 Set five 35 sacks cement plug at 8950-8850'; 7900'-7800'; 6270'-6170'; 4100'-4000' and 2830'-2730'. Set 10 sack cement plug from 30' to surface.

11/9/74 Cut off wellhead, capped well and installed marker. Pits were left open and will be back filled as soon as possible.

*Casing up to 166'*

*26" - 44'*

*13 3/8" - 375-250*

*8 7/8" - 2769-1135*

18. I hereby certify that the information above is true and complete to the best of my knowledge and belief.

SIGNED *Joel A. Guichard*

TITLE **Drilling Superintendent**

DATE **1/8/75**

APPROVED BY *Leon Bergstrom*

TITLE **OIL AND GAS INSPECTOR**

DATE **FEB 12 1975**

CONDITIONS OF APPROVAL, IF ANY: