

ABOVE THIS LINE FOR DIVISION USE ONLY

**NEW MEXICO OIL CONSERVATION DIVISION**  
 - Engineering Bureau -  
 1220 South St. Francis Drive, Santa Fe, NM 87505



**ADMINISTRATIVE APPLICATION CHECKLIST**

THIS CHECKLIST IS MANDATORY FOR ALL ADMINISTRATIVE APPLICATIONS FOR EXCEPTIONS TO DIVISION RULES AND REGULATIONS WHICH REQUIRE PROCESSING AT THE DIVISION LEVEL IN SANTA FE

**Application Acronyms:**

- [NSL-Non-Standard Location] [NSP-Non-Standard Proration Unit] [SD-Simultaneous Dedication]
- [DHC-Downhole Commingling] [CTB-Lease Commingling] [PLC-Pool/Lease Commingling]
- [PC-Pool Commingling] [OLS - Off-Lease Storage] [OLM-Off-Lease Measurement]
- [WFX-Waterflood Expansion] [PMX-Pressure Maintenance Expansion]
- [SWD-Salt Water Disposal] [IPI-Injection Pressure Increase]
- [EOR-Qualified Enhanced Oil Recovery Certification] [PPR-Positive Production Response]

- [1] **TYPE OF APPLICATION** - Check Those Which Apply for [A]  
 [A] Location - Spacing Unit - Simultaneous Dedication  
 NSL  NSP  SD

- PLC  
 - Apache Corp  
 873

Check One Only for [B] or [C]

- [B] Commingling - Storage - Measurement  
 DHC  CTB  PLC  PC  OLS  OLM

Well  
 - SB State 41  
 30-015-3228

- [C] Injection - Disposal - Pressure Increase - Enhanced Oil Recovery  
 WFX  PMX  SWD  IPI  EOR  PPR

+ 5 wells

- [D] Other: Specify \_\_\_\_\_

Pool

- [2] **NOTIFICATION REQUIRED TO:** - Check Those Which Apply, or Does Not Apply

- [A]  Working, Royalty or Overriding Royalty Interest Owners
- [B]  Offset Operators, Leaseholders or Surface Owner
- [C]  Application is One Which Requires Published Legal Notice
- [D]  Notification and/or Concurrent Approval by BLM or SLO  
U.S. Bureau of Land Management - Commissioner of Public Lands, State Land Office
- [E]  For all of the above, Proof of Notification or Publication is Attached, and/or,
- [F]  Waivers are Attached

- Red Lake,  
 Queen Grayburg-SA  
 51300  
 - Red Lake,  
 Cloni, etc - yes,  
 northeast  
 96836

- [3] **SUBMIT ACCURATE AND COMPLETE INFORMATION REQUIRED TO PROCESS THE TYPE OF APPLICATION INDICATED ABOVE.**

[4] **CERTIFICATION:** I hereby certify that the information submitted with this application for administrative approval is **accurate and complete** to the best of my knowledge. I also understand that **no action** will be taken on this application until the required information and notifications are submitted to the Division.

Note: Statement must be completed by an individual with managerial and/or supervisory capacity.

Isabel Alonso  
 Print or Type Name

*Isabel Alonso*  
 Signature

REGULATORY ANALYST  
 Title  
 02/07/2017  
 Date

Isabel.alonso@apachecorp.com  
 e-mail Address



February 7, 2017

Mr. Michael McMillan  
New Mexico Oil Conservation Division  
1220 South St Frances Drive  
Santa Fe NM 87505

Re: Request to Administratively Amend Surface Commingling Authority  
Order PLC-207-B  
SB State, TDF State, and NMBP State Leases  
Northeast Red Lake Glorieta-Yeso (Oil - 96836) Pool  
Eddy County, New Mexico

Dear Mr. McMillan:

Apache respectfully requests administrative approval to amend Order PLC-207-B, as approved on July 20, 2004. This order, as written, requires "...separate measurement of water and separate, continuous measurement of oil prior to commingling" due to diverse ownership.

**Proposal:**

Apache proposes to allocate production between the following wells, based on frequent and periodic well tests:

- SB State #1: API 30-015-32218
- SB State #2: API 30-015-42002
- SB State #4: API 30-015-42003
- NMBP State #1: API 30-015-33158
- TDF State #1: API 30-015-32231

Note that the following well will continue to be measured separately, as to oil and gas production, as this well has a separate test and metering installation:

- TDF State #2: API 30-015-32900

This request is the result of deterioration of the existing separation and measurement equipment at the common facility. Previously, the facilities included separation equipment for each lease, as required by the approved order. Over time the facilities have become unusable. The productive ability of these leases does not justify the capital expenditure necessary to replace this equipment, and requiring such replacement will cause premature abandonment of these otherwise economic properties. This will, of

Mr. Michael McMillan  
PLC-207-B Amendment Request  
Page 2

course, result in the loss of revenue to the State of New Mexico and the abandonment of recoverable reserves in place.

**Measurement:**

The TDF State #2 will be maintained on separate measurement due to facilities in place. The remaining TDF State well, the SB State wells, and the NMBP state well will share a common separation, storage, and metering facility. A test separator with oil and gas measurement capability will be used, on a rotating basis, to routinely meter each well's production stream separately. This individual well test data will be used to fairly allocate oil and gas production to each lease, based on a pro-rata share or total production. The wells will be rotated through the test separator on an equal time based, estimated to occur approximately every five days. This will assure proper allocation of production on a monthly basis.

A facility diagram is included, illustrating before and after arrangements should this request be approved.

**Notification:**

The working, royalty, and overriding royalty interests differ slightly between the three leases. The State of New Mexico has a consistent 1/8 royalty interest across all the leases. A service list with certified mail numbers is attached to this request. This notice was mailed today, February 7, 2017.

Please advise if this request is acceptable. If you need further information, please contact Isabel Alonso, Regulatory Analyst, at 432-818-1142 or [Isabel.alonso@apachecorp.com](mailto:Isabel.alonso@apachecorp.com) or you may contact me at [mark.henkhaus@apachecorp.com](mailto:mark.henkhaus@apachecorp.com) or by telephone at 432-818-1883.

Sincerely,



R. Mark Henkhaus, PE  
Regulatory Manager  
Permian Region



# NEW MEXICO ENERGY, MINERALS and NATURAL RESOURCES DEPARTMENT

**BILL RICHARDSON**

Governor

**Joanna Prukop**

Cabinet Secretary

**Mark E. Fesmire, P.E.**

Director

Oil Conservation Division

## **COMMINGLING ORDER PLC-207-B**

Marbob Energy Corporation  
P.O. Box 227  
Artesia, New Mexico 88211-0227

Attention: Mr. Dean Chumbley:

Marbob Energy Corporation is hereby authorized to surface commingle production from the following leases and pools - all located within Eddy County, New Mexico:

### **POOLS:**

Red Lake Queen-Grayburg-San Andres (Oil - 51300), and  
Northeast Red Lake Glorieta-Yeso (Oil - 96836)

### **LEASES:**

SB State Lease (Lease No. B-7244)  
SW/4 NW/4, Section 2, Township 18 South, Range 27 East, NMPM

TDF State Lease (Lease No. B-7244)  
SE/4 NW/4, Section 2, Township 18 South, Range 27 East, NMPM

NMBP State Lease (Lease No. B-7244)  
NW/4 SW/4, Section 2, Township 18 South, Range 27 East, NMPM

### **WELLS:**

SB State Well No. 1 (API No. 30-015-32218) Unit E  
TDF State No. 1 (API No. 30-015-32231) Unit F  
TDF State No. 2 (API No. 30-015-32900) Unit F  
NMPB State No. 1 (API No. 30-015-33158) Unit L

Due to diverse ownership between the above-described leases, each of these leases shall have separate measurement of water and separate, continuous measurement of oil prior to commingling. Allocation meters shall be regularly calibrated for accuracy. All liquids production shall be commingled into the SB State Tank Battery located in the SW/4 NW/4, Section 2, Township 18 South, Range 27 East, NMPM. Gas shall not be commingled.

*Administrative Order PLC-207-B*

*Marbob Energy Corporation*

*July 20, 2004*

*Page 2*

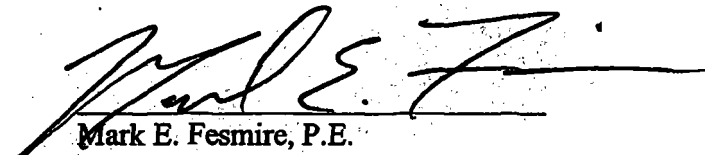
---

NOTE: This installation shall be installed and operated in accordance with the applicable provisions of Rule 309-B of the Division Rules and Regulations and the Division "Manual for the Installation and Operation of Commingling Facilities." It is the responsibility of the producer to notify the transporter of this commingling authority.

FURTHER: The operator shall notify the supervisor of the Artesia District office prior to implementation of the commingling process.

Remarks: This amended surface commingling order deletes previous authority to surface commingle production from the MJ State Lease comprising the NW/4 NW/4 of Section 2, and from the BM State Lease comprising the NE/4 SW/4 of Section 2, both in Township 18 South, Range 27 East, NMPM. This order now authorizes the surface commingling of Northeast Red Lake Glorieta-Yeso and Red Lake Queen-Grayburg-San Andres Pool production from the SB State Lease, TDF State Lease, and the NMBP State Lease, all as fully described by this order.

DONE at Santa Fe, New Mexico, on this 20th day of July, 2004.

  
Mark E. Fesmire, P.E.  
Director

MEF/DRC

cc: Oil Conservation Division - Artesia  
State Land Office - Santa Fe



February 2, 2017

*Sent via certified mail*

Interest Owner Name  
Street #  
City, State Zip

RE: Notice of Intent to Surface Commingle Production from the  
SB State #1, #2, #4; TDF State #1, #2; and NMBP State #1  
Section 2, Township 18 South, Range 27 East  
Eddy County, New Mexico

Dear Interest Owners,

Apache Corporation ("Apache") hereby requests your approval to surface commingle production from the following existing wells:

- ① SB State #1: API 30-015-32218, a vertical well located at 1,650' FNL and 330' FWL, UL E, Section 2, T-18-S, R-27-E, producing from the NE Red Lake Glorieta Yeso pool
- ② SB State #2: API 30-015-42002, a vertical well located at 1,900' FNL and 990' FWL, UL E, Section 2, T-18-S, R-27-E, producing from the NE Red Lake Glorieta Yeso pool
- ③ SB State #4: API 30-015-42003, a vertical well located at 2,515' FNL and 800' FWL, UL E, Section 2, T-18-S, R-27-E, producing from the NE Red Lake Glorieta Yeso pool
- ① TDF State #1: API 30-015-32231, a vertical well located at 1,960' FNL and 1,650' FWL, UL E, Section 2, T-18-S, R-27-E, producing from the NE Red Lake Glorieta Yeso pool
- ① TDF State #2: API 30-015-32900, a vertical well located at 1,650' FNL and 2,305' FWL, UL E, Section 2, T-18-S, R-27-E, producing from the NE Red Lake Glorieta Yeso pool
- ① NMBP State #1: API 30-015-33158, a vertical well located at 2,185' FNL and 990' FWL, UL E, Section 2, T-18-S, R-27-E, producing from the NE Red Lake Glorieta Yeso pool

*Red Lake Glorieta Yeso  
Queen-018  
Yeso Also  
Glorieta-Yeso  
Red Lake  
Glorieta-Yeso  
R-*

Please be aware that the interest ownership differs slightly between the SB State, TDF State, and NMBP State wells. In order to commingle production at the surface, production from each of the wells must be allocated by well test to account for the difference in ownership.

Enclosed for your review is a copy of Apache's application requesting approval from the Bureau of Land Management and the New Mexico Oil Conservation Division to surface commingle the referenced wells. To evidence your approval for the surface commingling of production, please execute the signature block below and return one copy of this letter to my attention by e-mail, fax, or using the prepaid return envelope enclosed herewith. Should you have any questions, please don't hesitate to contact me.

Sincerely,

**APACHE CORPORATION**



Laci Stretcher  
Landman  
laci.stretcher@apachecorp.com  
432-818-1846 (office)  
432-818-1197 (fax)

The undersigned hereby approves to surface commingle production, as proposed in this letter, subject to further approval by the New Mexico Oil Conservation Division.

\_\_\_\_\_  
Signature

\_\_\_\_\_  
Printed Name

\_\_\_\_\_  
Title

**SB State #1, #2, #4**

	Party Name		Certified Mail No.
Royalty Interest	STATE OF NEW MEXICO	PO BOX 1148 Santa Fe NM 87504	7015 0640 0003 0223 9798
	ZPZ DELAWARE I LLC (OPERATOR)	2000 POST OAK BLVD, STE 100 HOUSTON, TX 77056	Not applicable
	COG OPERATING LLC	600 W Illinois Ave Midland, TX 79701	7015 0640 0003 0223 9804
Overriding Royalty	SPURCK FAMILY REVOCABLE TRUST UDT	22712 Erwin Street, Woodlands Hills, CA 91367	7015 0640 0003 0223 9811
	DAWN N STEAD SURVIVORS TRUST	22712 Erwin Street, Woodlands Hills, CA 91367	7015 0640 0003 0223 9828
	HARLAN STEAD ESTATE TRUST	3262 Avenida De Sueno Carlsbad, CA 92009	7015 0640 0003 0223 9835

**TDF State #1, #2**

Royalty Interest	STATE OF NEW MEXICO	PO BOX 1148 Santa Fe NM, 87504	7015 0640 0003 0223 9798
	ZPZ DELAWARE I LLC (OPERATOR)	2000 POST OAK BLVD, STE 100 HOUSTON, TX 77056	Not applicable
	COG OPERATING LLC	600 W Illinois Ave Midland, TX 79701	7015 0640 0003 0223 9804
Overriding Royalty	JANE ANN HUDSON DAVIS	6770 Wolf Creek CT Rio Rancho, NM 87124-5708	7015 0640 0003 0223 9842
	JOAN ANN HUDSON	660 Camino De Las Mares San Clemente, CA 92673	7015 0640 0003 0223 9859
	JONEL SUSAN GRASSO	11 Ocean Ridge Lagun Niguel, CA 92677	7016 0640 0003 0223 9866

**NMBP State #1**

Royalty Interest	STATE OF NEW MEXICO	PO BOX 1148 Santa Fe, NM, 87504	7015 0640 0003 0223 9798
	ZPZ DELAWARE I LLC (OPERATOR)	2000 POST-OAK BLVD, STE 100 HOUSTON, TX 77056	Not applicable
	COG OPERATING LLC	600 W Illinois Ave Midland, TX 79701	7015 0640 0003 0223 9804
Overriding Royalty	NOBLE ROYALTIES INC	PO Box 660082 Dallas, TX 75266-0082	7015 0640 0003 0223 9880
	NESTEGG ENERGY CORPORATION	2308 Sierra Vista RD Artesia, NM 88210	7015 0640 0003 0223 9873
	BILL GOLDSTON FAMILY TRUST	PO BOX 40909 Austin, TX 78704	7015 0640 0003 0223 9415



# Apache Corporation SB- State Battery

(CURRENTLY 2016)

Sec. 2, T18S, R27E

Lat. 32.778878, Long. -104.256988

Apache Corp.  
1945 Bluestern Rd.  
Artesia, NM 88210  
575-677-3642

Wells Going To Facility:

SB-ST #1  
API# 30-015-32218  
Sec. 2 - T18S - R27E  
Lease #B-7244, Unit E  
SB-ST #2  
API# 30-015-42002  
Sec. 2 - T18S - R27E  
Lease #B-7244, Unit E  
SB-ST #4  
API# 30-015-42003  
Sec. 2 - T18S - R27E  
Lease #B-7244, Unit E  
TDF- ST #1  
API# 30-015-32231  
Sec. 2 - T18S - R27E  
Lease #B-7244, Unit F  
TDF- ST #2  
API# 30-015-32900  
Sec. 2 - T18S - R27E  
Lease #B-7244, Unit F  
NMBP- ST #1  
API# 30-015-33158  
Sec. 2 - T18S - R27E  
Lease #B-7244, Unit L

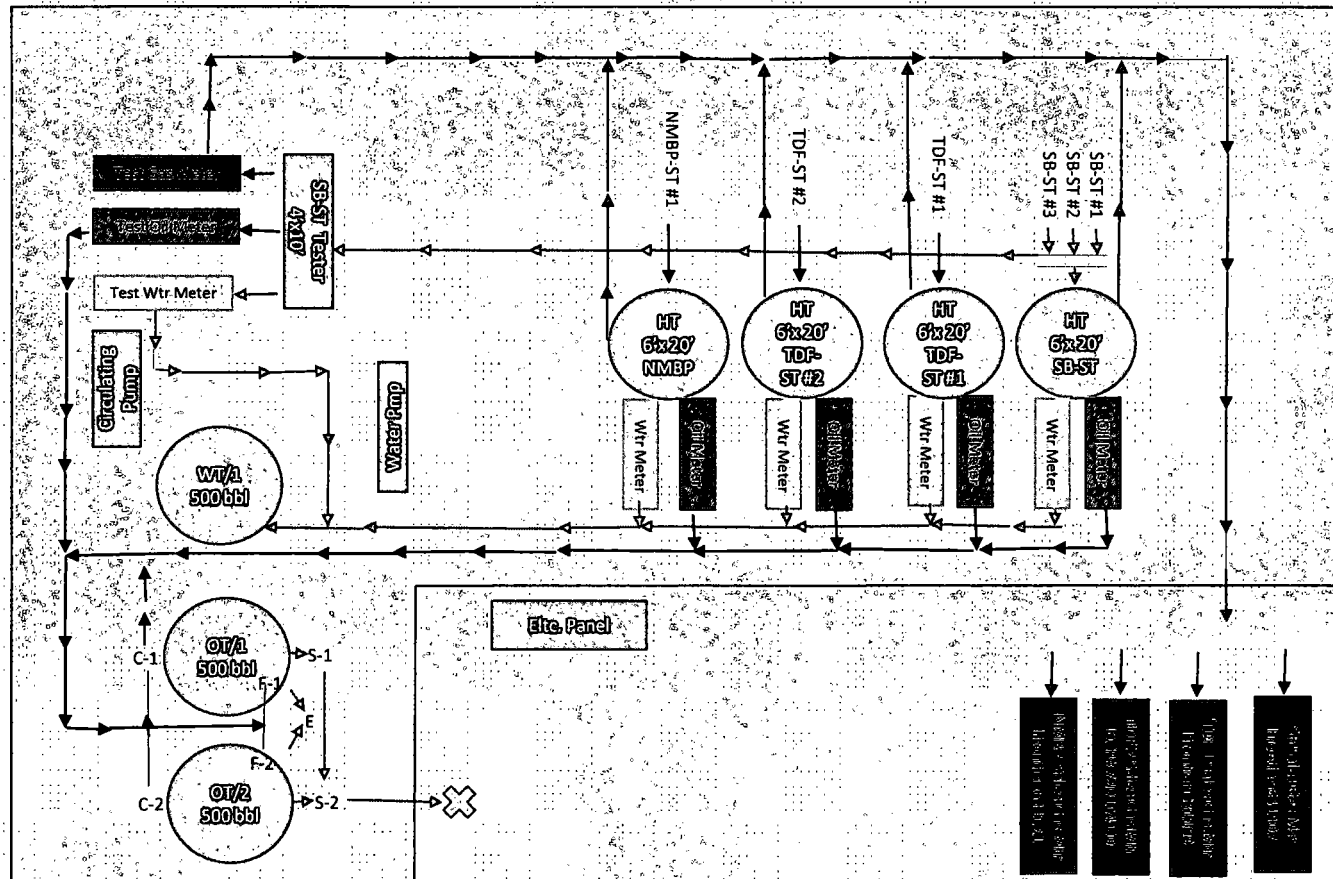
## Oil Tank Sealing Requirements

### A. Production Phase (OT/1)

- a. valve F-1 open
- b. valve E open
- c. valve S-1 sealed closed
- d. valves on OT/2
  - i. valve F-2 closed
  - ii. valve C-2 sealed
  - iii. Valve S-2 sealed closed

### B. Sales Phase (OT/1)

- a. valve F-1, E, C-1 sealed closed
- b. valve S-1 open to sales
- c. valve OT-2
  - i. valve F-2 open
  - ii. valve C-2 sealed
  - iii. Valve S-2 sealed closed



S = Oil Sales Line Valve  
E = Equalizer Line Valve  
F = Fill Line Valve  
C = Circulating Line Valve

# Apache Corporation SB- State Battery

(Proposed 2017)

Sec. 2, T18S, R27E

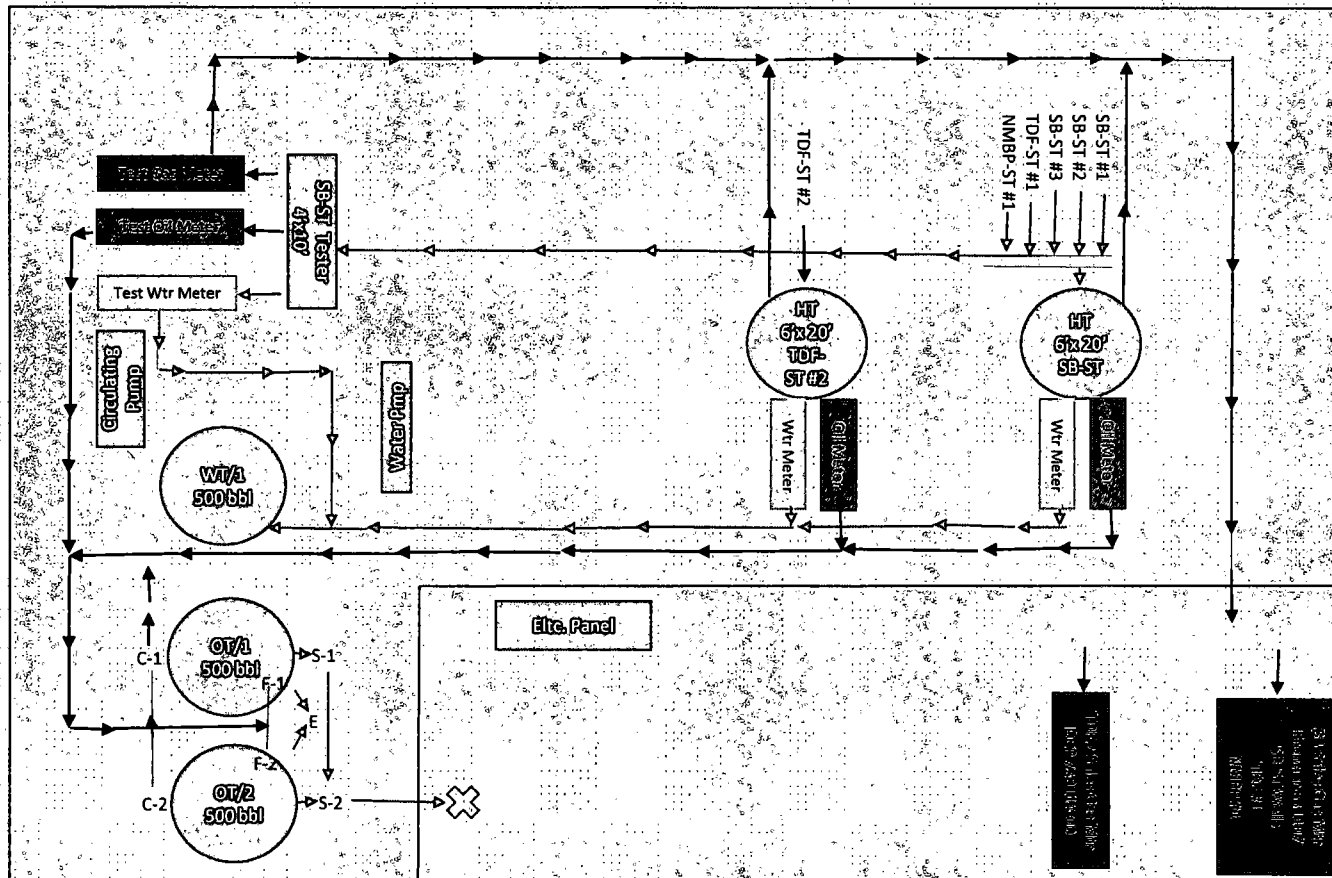
Lat. 32.778878, Long. -104.256988

Apache Corp.  
1945 Bluestem Rd.  
Artesia, NM 88210  
575-677-3642

Wells Going To Facility:

SB-ST #1  
API# 30-015-32218  
Sec. 2 - T18S - R27E  
Lease #B-7244, Unit E  
SB-ST #2  
API# 30-015-42002  
Sec. 2 - T18S - R27E  
Lease #B-7244, Unit E  
SB-ST #4  
API# 30-015-42003  
Sec. 2 - T18S - R27E  
Lease #B-7244, Unit E  
TDF - ST #1  
API# 30-015-32231  
Sec. 2 - T18S - R27E  
Lease #B-7244, Unit F  
TDF - ST #2  
API# 30-015-32900  
Sec. 2 - T18S - R27E  
Lease #B-7244, Unit F  
NMBP - ST #1  
API# 30-015-33158  
Sec. 2 - T18S - R27E  
Lease #B-7244, Unit L

S = Oil Sales Line Valve  
E = Equalizer Line Valve  
F = Fill Line Valve  
C = Circulating Line Valve



## Oil Tank Sealing Requirements

### A. Production Phase (OT/1)

- valve F-1 open
- valve E open
- valve S-1 sealed closed
- valves on OT/2
  - valve F-2 closed
  - valve C-2 sealed
  - Valve S-2 sealed closed

### B. Sales Phase (OT/1)

- valve F-1, E, C-1 sealed closed
- valve S-1 open to sales
- valve OT-2
  - valve F-2 open
  - valve C-2 sealed
  - Valve S-2 sealed closed

State of New Mexico

Energy, Minerals and Natural Resources Department

DISTRICT I  
P.O. Box 1880, Hobbs, NM 88241-1880

DISTRICT II  
P.O. Drawer 88, Artesia, NM 88211-0718

DISTRICT III  
1000 Rio Brazos Rd., Artesia, NM 87410

DISTRICT IV  
P.O. Box 2088, Santa Fe, N.M. 87504-2088

OIL CONSERVATION DIVISION

P.O. Box 2088

Santa Fe, New Mexico 87504-2088

Form C-102

Revised February 10, 1994

Submit to Appropriate District Office

State Lease - 4 Copies

Fee Lease - 3 Copies

WELL LOCATION AND ACREAGE DEDICATION PLAT

AMENDED REPORT

API Number	Pool Code	Pool Name
	96836	RED LAKE; GLORIETA YESO, NORTHEAST
Property Code	Property Name	Well Number
	SB STATE	1
OGRID No.	Operator Name	Elevation
14049	MARBOB ENERGY CORPORATION	3572'

Surface Location


UL or lot No.	Section	Township	Range	Lot Idn	Feet from the	North/South line	Feet from the	East/West line	County
E	2	18-S	27-E		1650	NORTH	330	WEST	EDDY

Bottom Hole Location If Different From Surface

UL or lot No.	Section	Township	Range	Lot Idn	Feet from the	North/South line	Feet from the	East/West line	County

Dedicated Acres	Joint or Infill	Consolidation Code	Order No.
40			

NO ALLOWABLE WILL BE ASSIGNED TO THIS COMPLETION UNTIL ALL INTERESTS HAVE BEEN CONSOLIDATED OR A NON-STANDARD UNIT HAS BEEN APPROVED BY THE DIVISION

LOT 4	LOT 3	LOT 2	LOT 1	<p><b>OPERATOR CERTIFICATION</b></p> <p>I hereby certify the the information contained herein is true and complete to the best of my knowledge and belief.</p> <p><i>Diana J. Cannon</i> Signature</p> <p>DIANA J. CANNON Printed Name</p> <p>PRODUCTION ANALYST Title</p> <p>JANUARY 25, 2002 Date</p>
1650'				
39.59 AC	39.53 AC	39.44 AC	39.38 AC	
330'				
				<p><b>SURVEYOR CERTIFICATION</b></p> <p>I hereby certify that the well location shown on this plat was plotted from field notes of actual surveys made by me or under my supervision, and that the same is true and correct to the best of my belief.</p> <p>FEBRUARY 11, 2002</p> <p>Date Surveyed</p> <p>Signature &amp; Seal of Professional Surveyor</p> <p><i>Gary E. Edson</i> Professional Surveyor</p> <p>82110102</p>
<p>AWB</p>				
<p>Certificate No. RONALD J. EDSON 3239 GARY EDSON 12841</p>				

FEB 15 2002

DISTRICT I  
P.O. Box 1980, Hobbs, NM 88241-1980

State of New Mexico  
Energy, Minerals and Natural Resources Department

Form C-102  
Revised February 10, 1994  
Submit to Appropriate District Office  
State Lease - 4 Copies  
Fee Lease - 3 Copies

DISTRICT II  
P.O. Drawer DD, Artesia, NM 88211-0719

OIL CONSERVATION DIVISION  
P.O. Box 2088  
Santa Fe, New Mexico 87504-2088

DISTRICT III  
1000 Rio Brazos Rd., Artec, NM 87410

DISTRICT IV  
P.O. Box 2088, SANTA FE, N.M. 87504-2088

WELL LOCATION AND ACREAGE DEDICATION PLAT

AMENDED REPORT

API Number 30-015-32218		Pool Code 51300	Pool Name RED LAKE QUEEN GRAYBURG SA	
Property Code 29518	Property Name SB STATE		Well Number 1	
OGRD No. 14049	Operator Name MARBOB ENERGY CORPORATION		Elevation 3572'	

Surface Location

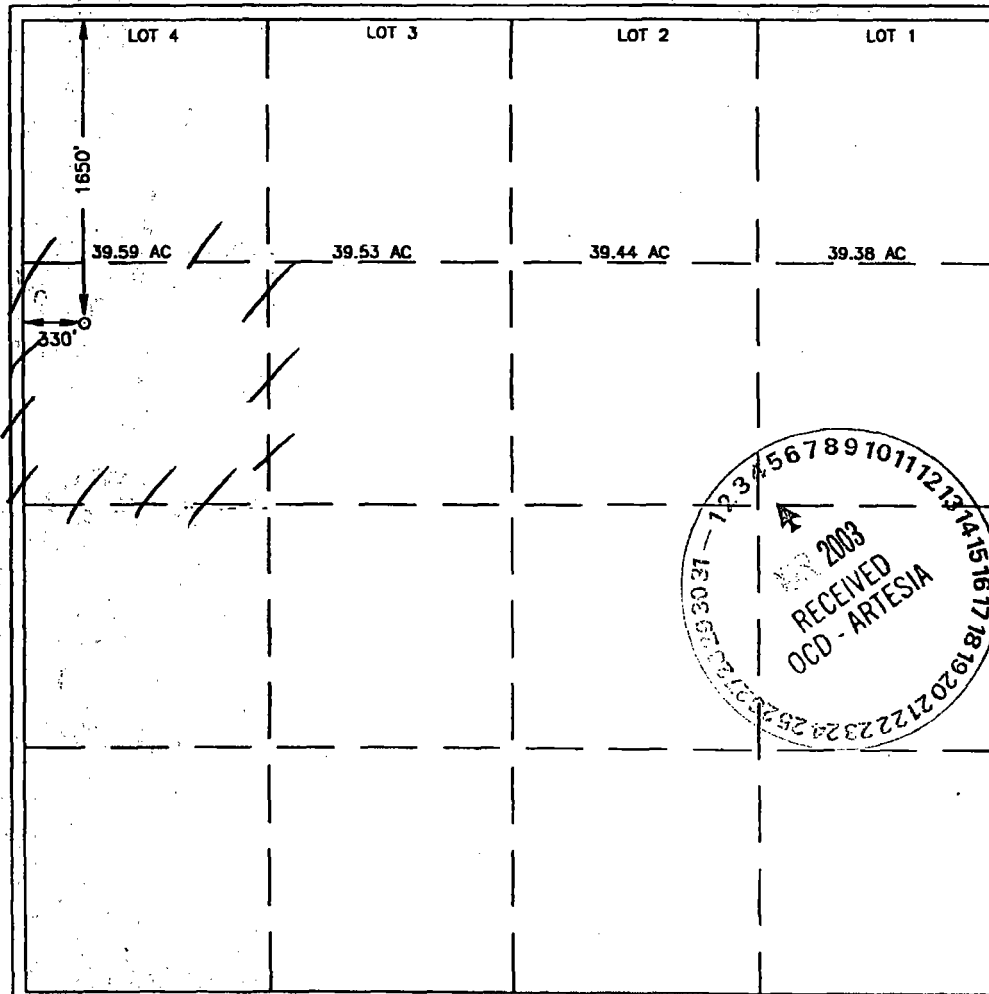
UL or lot No.	Section	Township	Range	Lot Idn	Feet from the	North/South line	Feet from the	East/West line	County
E	2	18-S	27-E		1650	NORTH	330	WEST	EDDY

Bottom Hole Location If Different From Surface

UL or lot No.	Section	Township	Range	Lot Idn	Feet from the	North/South line	Feet from the	East/West line	County

Dedicated Acres	Joint or Infill	Consolidation Code	Order No.
40			

NO ALLOWABLE WILL BE ASSIGNED TO THIS COMPLETION UNTIL ALL INTERESTS HAVE BEEN CONSOLIDATED OR A NON-STANDARD UNIT HAS BEEN APPROVED BY THE DIVISION



**OPERATOR CERTIFICATION**

I hereby certify the the information contained herein is true and complete to the best of my knowledge and belief.

*Diana J. Cannon*  
Signature

DIANA J. CANNON  
Printed Name

PRODUCTION ANALYST  
Title

MARCH 3, 2003  
Date

---

**SURVEYOR CERTIFICATION**

I hereby certify that the well location shown on this plat was plotted from field notes of actual surveys made by me or under my supervision, and that the same is true and correct to the best of my belief.

FEBRUARY 11, 2002

Date Surveyed  
Signature & Seal of Professional Surveyor  
*Gary Edson*  
02.17.0162

Certificate No. RONALD S. EDSON 3239  
GARY EDSON 12641

OCD - HOBBS  
11/30/2016  
RECEIVED

District I  
1625 N. French Dr., Hobbs, NM 88240  
District II  
1301 W. Grand Avenue, Artesia, NM 88210  
District III  
1000 Rio Brazos Rd., Aztec, NM 87410  
District IV  
1220 S. St. Francis Dr., Santa Fe, NM 87505

State of New Mexico  
Energy, Minerals & Natural Resources Department  
OIL CONSERVATION DIVISION  
1220 South St. Francis Dr.  
Santa Fe, NM 87505

Form C-102  
Revised October 12, 2005  
Submit to Appropriate District Office  
State Lease - 4 Copies  
Fee Lease - 3 Copies

AMENDED REPORT

WELL LOCATION AND ACREAGE DEDICATION PLAT

API Number 30-015-42002		Pool Code 96836	Pool Name Red Lake; Glorieta-Yeso, Northeast	OK per <i>[Signature]</i>
Property Code 308700	SB State	Property Name		Well Number 002
OGRID No. 873	Operator Name Apache Corporation: 303 Veterans Airpark Lane, Suite 1000 Midland, TX 79705			Elevation 3568'

<sup>10</sup> Surface Location

UL or lot no.	Section	Township	Range	Lot Idn	Feet from the	North/South line	Feet from the	East/West line	County
E	2	18S	27E		1900	North	990	West	Eddy

<sup>11</sup> Bottom Hole Location If Different From Surface

UL or lot no.	Section	Township	Range	Lot Idn	Feet from the	North/South line	Feet from the	East/West line	County
E	2	18S	27E		1650	North	990	West	Eddy

" Dedicated Acres 40	" Joint or Infill	" Consolidation Code	" Order No.
-------------------------	-------------------	----------------------	-------------

No allowable will be assigned to this completion until all interests have been consolidated or a non-standard unit has been approved by the division.

	<p><sup>17</sup> OPERATOR CERTIFICATION</p> <p>I hereby certify that the information contained herein is true and complete to the best of my knowledge and belief, and that this organization either owns a working interest or unleased mineral interest in the land including the proposed bottom hole location or has a right to drill this well at this location pursuant to a contract with an owner of such a mineral or working interest, or to a voluntary pooling agreement or a compulsory pooling order heretofore entered by the division.</p> <p><i>Isabel HUDSON</i> 11/29/2016 Signature Date</p> <p>Isabel Hudson Printed Name</p>		
	<p><sup>18</sup> SURVEYOR CERTIFICATION</p> <p>I hereby certify that the well location shown on this plat was plotted from field notes of actual surveys made by me or under my supervision, and that the same is true and correct to the best of my belief.</p>		
	<p>Date of Survey</p> <p>Signature and Seal of Professional Surveyor:</p>		
	<p>Certificate Number</p>		

OCD - HOBBS  
11/30/2016  
RECEIVED

District I  
1625 N. French Dr., Hobbs, NM 88240  
District II  
1301 W. Grand Avenue, Artesia, NM 88210  
District III  
1000 Rio Brazos Rd., Aztec, NM 87410  
District IV  
1220 S. St. Francis Dr., Santa Fe, NM 87505

State of New Mexico  
Energy, Minerals & Natural Resources Department  
OIL CONSERVATION DIVISION  
1220 South St. Francis Dr.  
Santa Fe, NM 87505

Form C-102  
Revised October 12, 2005  
Submit to Appropriate District Office  
State Lease - 4 Copies  
Fee Lease - 3 Copies

AMENDED REPORT

WELL LOCATION AND ACREAGE DEDICATION PLAT

'API Number 30-015-42003		'Pool Code 96836		'Pool Name Red Lake, Glorieta-Yeso Northeast		OK per <i>KZ</i>	
'Property Code 308700		'Property Name SB State				'Well Number 004	
'OGRID No. 873		'Operator Name Apache Corporation: 303 Veterans Airpark Lane, Suite 1000 Midland, TX 79705				'Elevation 3551'	

<sup>10</sup> Surface Location

UL or lot no.	Section	Township	Range	Lot Idn	Feet from the	North/South line	Feet from the	East/West line	County
E	2	18S	27E		2515	North	800	West	Eddy

<sup>11</sup> Bottom Hole Location If Different From Surface

UL or lot no.	Section	Township	Range	Lot Idn	Feet from the	North/South line	Feet from the	East/West line	County
E	2	18S	27E		2296	North	980	West	Eddy
'Dedicated Acres 40		'Joint or Infill		'Consolidation Code		'Order No.			

No allowable will be assigned to this completion until all interests have been consolidated or a non-standard unit has been approved by the division.

	<p><sup>17</sup> OPERATOR CERTIFICATION</p> <p>I hereby certify that the information contained herein is true and complete to the best of my knowledge and belief, and that this organization either owns a working interest or unleased mineral interest in the land including the proposed bottom hole location or has a right to drill this well at this location pursuant to a contract with an owner of such a mineral or working interest, or to a voluntary pooling agreement or a compulsory pooling order hereinafter entered by the division.</p> <p><i>Isabel HUDSON</i> 11/29/2016 Signature Date</p> <p>Isabel Hudson Printed Name</p>		
	<p><sup>18</sup> SURVEYOR CERTIFICATION</p> <p>I hereby certify that the well location shown on this plat was plotted from field notes of actual surveys made by me or under my supervision, and that the same is true and correct to the best of my belief.</p> <p>Date of Survey Signature and Seal of Professional Surveyor:</p>		
	<p>Certificate Number</p>		

State of New Mexico

Energy, Minerals and Natural Resources Department

Form C-102

DISTRICT I  
P.O. Box 1980, Hobbs, NM 88241-1980

Revised February 10, 1994  
Submit to Appropriate District Office  
State Lease - 4 Copies  
Fee Lease - 3 Copies

DISTRICT II  
P.O. Drawer DD, Artesia, NM 86211-0719

OIL CONSERVATION DIVISION

P.O. Box 2088

Santa Fe, New Mexico 87504-2088

DISTRICT III  
1000 Rio Brazos Rd., Aztec, NM 87410

DISTRICT IV  
P.O. BOX 2088, SANTA FE, N.M. 87504-2088

WELL LOCATION AND ACREAGE DEDICATION PLAT

AMENDED REPORT

API Number	Pool Code	Pool Name
	96836	RED LAKE; GLORIETA YESO, NORTHEAST
Property Code	Property Name	Well Number
	TDF STATE	1
OGRID No.	Operator Name	Elevation
14049	MARBOB ENERGY CORPORATION	3561'

Surface Location

UL or lot No.	Section	Township	Range	Lot Idn	Feet from the	North/South line	Feet from the	East/West line	County
F	2	18-S	27-E		1960	NORTH	1650	WEST	EDDY

Bottom Hole Location If Different From Surface

UL or lot No.	Section	Township	Range	Lot Idn	Feet from the	North/South line	Feet from the	East/West line	County

Dedicated Acres	Joint or Infill	Consolidation Code	Order No.
40			

NO ALLOWABLE WILL BE ASSIGNED TO THIS COMPLETION UNTIL ALL INTERESTS HAVE BEEN CONSOLIDATED OR A NON-STANDARD UNIT HAS BEEN APPROVED BY THE DIVISION

LOT 4	LOT 3	LOT 2	LOT 1	<p><b>OPERATOR CERTIFICATION</b></p> <p>I hereby certify that the information contained herein is true and complete to the best of my knowledge and belief.</p> <p><i>Diana J. Cannon</i> Signature</p> <p>DIANA J. CANNON Printed Name</p> <p>PRODUCTION ANALYST Title</p> <p>MARCH 5, 2002 Date</p>
39.59 AC	39.53 AC	39.44 AC	39.38 AC	
1650	1960			<p><b>SURVEYOR CERTIFICATION</b></p> <p>I hereby certify that the well location shown on this plat was plotted from field notes of actual surveys made by me or under my supervision, and that the same is true and correct to the best of my belief.</p> <p>FEBRUARY 14, 2002 Date Surveyed</p> <p>AWB Signature &amp; Seal of Professional Surveyor</p> <p><i>Ronald J. Edson</i> 02-11-0103</p>
				<p>Certificate No. RONALD J. EDSON 3239 GARY EDSON 12841</p>

State of New Mexico

Energy, Minerals and Natural Resources Department

DISTRICT I  
P.O. Box 1880, Hobbs, NM 88241-1880

DISTRICT II  
P.O. Drawer ED, Artesia, NM 88211-0719

DISTRICT III  
1000 Rio Brasos Rd., Artec, NM 87410

DISTRICT IV  
P.O. BOX 2088, SANTA FE, N.M. 87504-2088

OIL CONSERVATION DIVISION

P.O. Box 2088

Santa Fe, New Mexico 87504-2088

Form C-102

Revised February 10, 1994

Submit to Appropriate District Office,

State Lease - 4 Copies

Fee Lease - 3 Copies

WELL LOCATION AND ACREAGE DEDICATION PLAT

AMENDED REPORT

API Number 30-015-32231	Pool Code 51300	Pool Name RED LAKE QUEEN GRAYBURG SAN ANDRES
Property Code 29595	Property Name TDF STATE	Well Number 1
OGRID No. 14049	Operator Name MARBOB ENERGY CORPORATION	Elevation 3561'

Surface Location

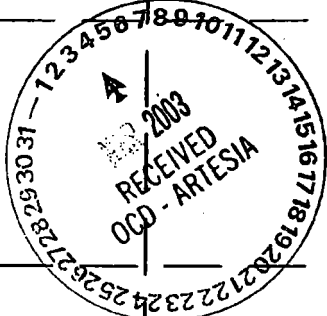
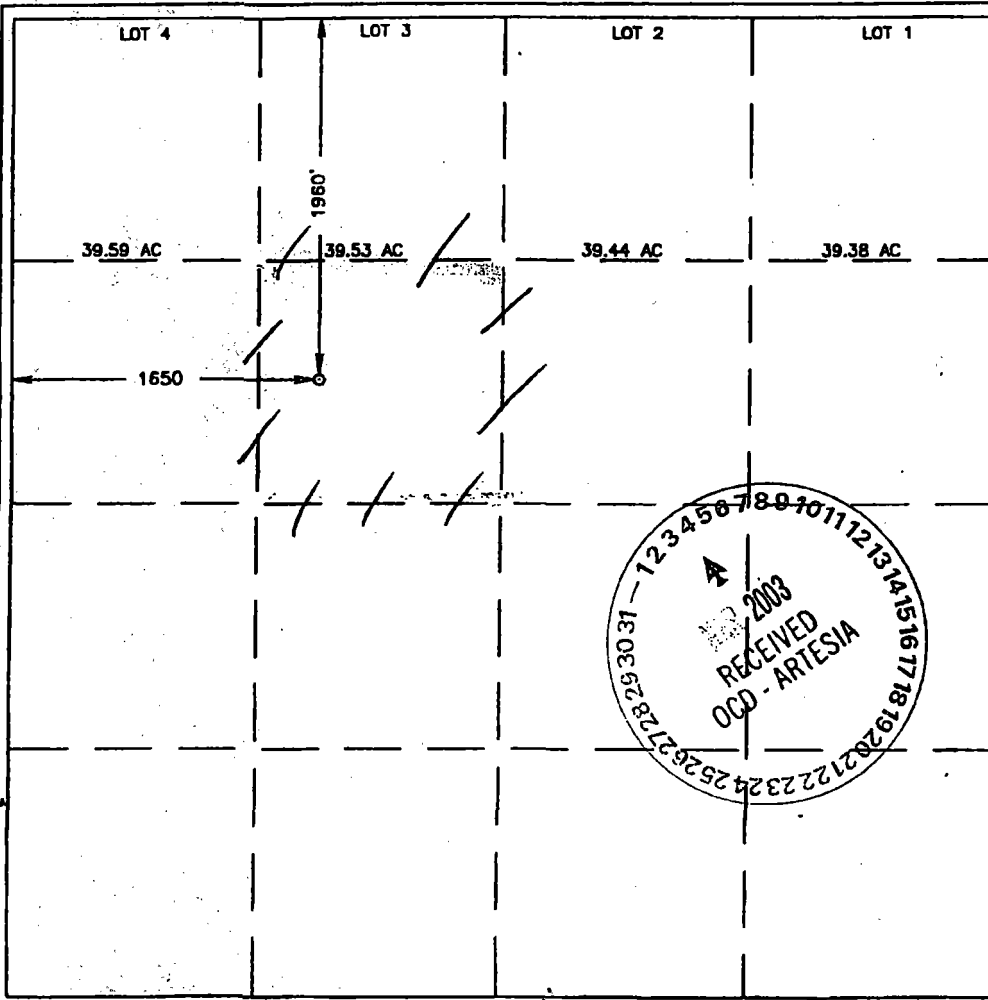
UL or lot No.	Section	Township	Range	Lot Idn	Feet from the	North/South line	Feet from the	East/West line	County
F	2	18-S	27-E		1960	NORTH	1650	WEST	EDDY

Bottom Hole Location If Different From Surface

UL or lot No.	Section	Township	Range	Lot Idn	Feet from the	North/South line	Feet from the	East/West line	County

Dedicated Acres 40	Joint or Infill	Consolidation Code	Order No.
-----------------------	-----------------	--------------------	-----------

NO ALLOWABLE WILL BE ASSIGNED TO THIS COMPLETION UNTIL ALL INTERESTS HAVE BEEN CONSOLIDATED OR A NON-STANDARD UNIT HAS BEEN APPROVED BY THE DIVISION



**OPERATOR CERTIFICATION**

I hereby certify that the information contained herein is true and complete to the best of my knowledge and belief.

*Diana J. Cannon*  
Signature

DIANA J. CANNON  
Printed Name

PRODUCTION ANALYST  
Title

MAR 3, 2003  
Date

---

**SURVEYOR CERTIFICATION**

I hereby certify that the well location shown on this plat was plotted from field notes of actual surveys made by me or under my supervision, and that the same is true and correct to the best of my belief.

FEBRUARY 14, 2002  
Date Surveyed

AWB  
Signature & Seal of Professional Surveyor

*Ronald J. Edson*  
Professional Surveyor

02.11/0103

Certificate No. RONALD J. EDSON 3239  
GARY EDSON 12841



DISTRICT I  
P.O. Box 1080, Hobbs, NM 88241-1080

State of New Mexico  
Energy, Minerals and Natural Resources Department

Form C-102  
Revised February 10, 1994  
Submit to Appropriate District Office  
State Lease - 4 Copies  
Fee Lease - 3 Copies

DISTRICT II  
P.O. Drawer DD, Artesia, NM 88211-0719

DISTRICT III  
1000 Rio Brazos Rd., Artesia, NM 87410

DISTRICT IV  
P.O. BOX 2088, SANTA FE, N.M. 87504-2088

OIL CONSERVATION DIVISION

P.O. Box 2088  
Santa Fe, New Mexico 87504-2088

WELL LOCATION AND ACREAGE DEDICATION PLAT

AMENDED REPORT

API Number 30-015-32900	Pool Code 51300	Pool Name RED LAKE; QUEEN GRAYBURG SAN ANDRES
Property Code 29595	Property Name TDF STATE	Well Number 2
OGRID No. 14049	Operator Name MARBOB ENERGY CORPORATION	Elevation 3571'

Surface Location

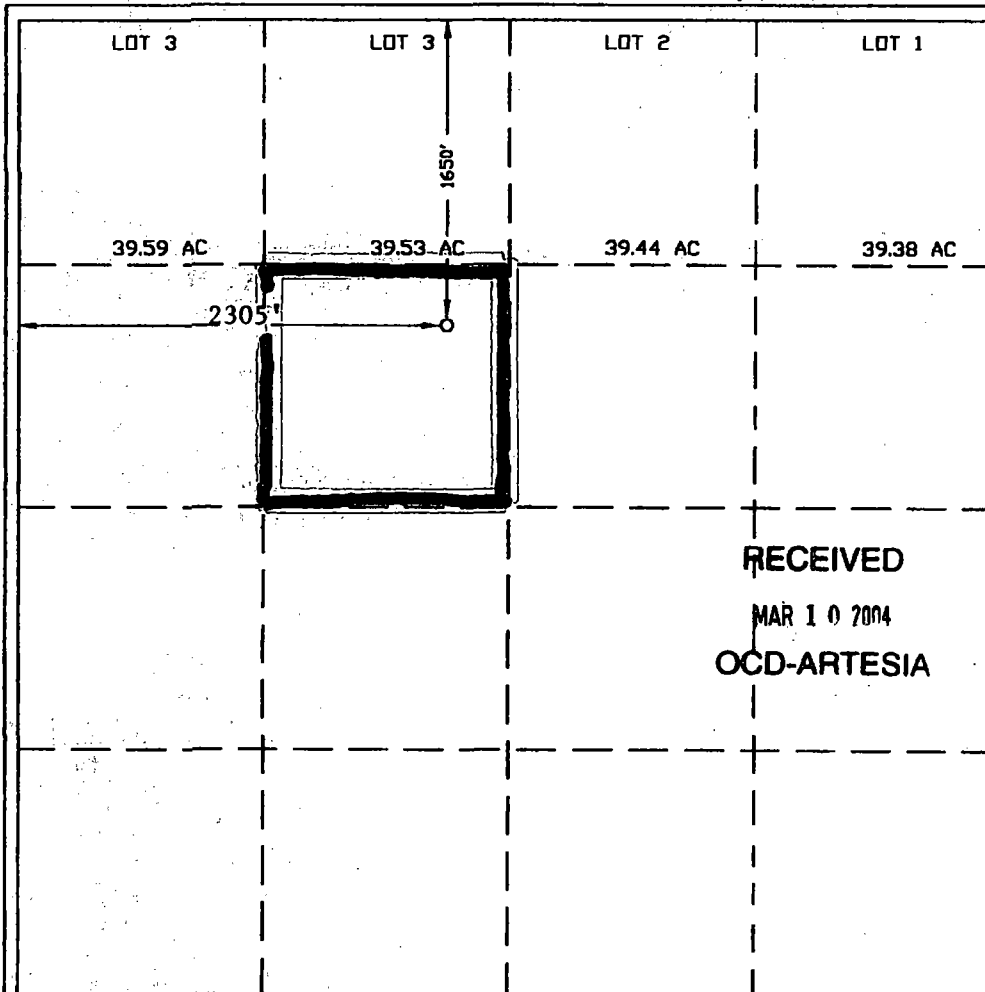
UL or lot No.	Section	Township	Range	Lot Idn	Feet from the	North/South line	Feet from the	East/West line	County
F	2	18-S	27-E		1650'	NORTH	2305'	WEST	EDDY

Bottom Hole Location If Different From Surface

UL or lot No.	Section	Township	Range	Lot Idn	Feet from the	North/South line	Feet from the	East/West line	County

Dedicated Acres	Joint or Infill	Consolidation Code	Order No.
40			

NO ALLOWABLE WILL BE ASSIGNED TO THIS COMPLETION UNTIL ALL INTERESTS HAVE BEEN CONSOLIDATED OR A NON-STANDARD UNIT HAS BEEN APPROVED BY THE DIVISION



**OPERATOR CERTIFICATION**

I hereby certify that the information contained herein is true and complete to the best of my knowledge and belief.

*Diana J. Cannon*  
Signature

DIANA J. CANNON  
Printed Name

PRODUCTION ANALYST  
Title

MARCH 9, 2004  
Date

---

**SURVEYOR CERTIFICATION**

I hereby certify that the well location shown on this plat was plotted from field notes of actual surveys made by me or under my supervision, and that the same is true and correct to the best of my belief.

July 15, 2003  
Date Surveyed

Ronald J. Eidson A.W.B.  
Signature and Seal of Professional Surveyor

RONALD J. EIDSON  
2003  
03/11-0678

Certificate No. RONALD J. EIDSON 3239  
12641

District I  
1625 N. French Dr., Hobbs, NM 88240  
District II  
1301 W. Grand Ave., Artesia, NM 88210  
District III  
1000 Rio Brazos Rd., Aztec, NM 87410  
District IV  
1220 S. St Francis Dr., Santa Fe, NM 87505

State of New Mexico  
Energy, Minerals and Natural Resources

Form C-102

Oil Conservation Division  
1220 S. St Francis Dr.  
Santa Fe, NM 87505

**WELL LOCATION AND ACREAGE DEDICATION PLAT**

API Number 30-15-32900	Pool Name RED LAKE; GLORIETA YESO, NORTHEAST	Pool Code 96836
Property Code 29595	Property Name TDF STATE	Well No. 002
OGRID No. 14049	Operator Name Marbob Energy Corporation	Elevation 3571

**Surface And Bottom Hole Location**

UL of Lot F	Section 2	Township 18S	Range 27E	Lot Idn	Feet From 1650	N/S Line N	Feet From 2305	E/W Line W	County Eddy
Dedicated Acres 40		Joint or Infill		Consolidation Code		Order No.			

	■		

**OPERATOR CERTIFICATION**

*I hereby certify that the information contained herein is true and complete to the best of my knowledge and belief.*

Electronically Signed By: Diana Cannon  
Title: Production Analyst  
Date: 7/21/2003

---

**SURVEYOR CERTIFICATION**

*I hereby certify that the well location shown on this plat was plotted from field notes of actual surveys made by me or under my supervision, and that the same is true and correct to the best of my belief.*

Electronically Signed By: Ronald Eidson  
Date of Survey: 7/15/2003  
Certificate Number: 3239

DISTRICT I  
P.O. Box 1880, Hobbs, NM 88241-1880

State of New Mexico

Energy, Minerals and Natural Resources Department

Form C-102  
Revised February 10, 1994  
Submit to Appropriate District Office  
State Lease - 4 Copies  
Fee Lease - 3 Copies

DISTRICT II  
P.O. Drawer DD, Artesia, NM 88211-0719

DISTRICT III  
1000 Rio Brazos Rd., Artec, NM 87410

DISTRICT IV  
P.O. Box 2088, Santa Fe, N.M. 87504-2088

OIL CONSERVATION DIVISION

P.O. Box 2088

Santa Fe, New Mexico 87504-2088

AMENDED REPORT

WELL LOCATION AND ACREAGE DEDICATION PLAT

API Number 30-015-33158	Pool Code 51300	Pool Name RED LAKE; QUEEN GRAYBURG SAN ANDRES
Property Code 33435	Property Name NMBP STATE	Well Number 1
OGRID No. 14049	Operator Name MARBOB ENERGY CORPORATION	Elevation 3549'

Surface Location

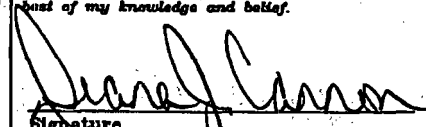
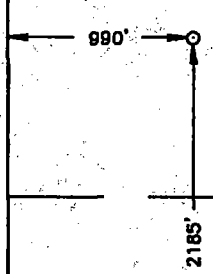
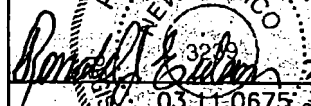
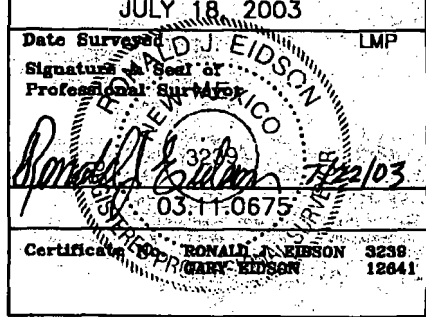
UL or lot No.	Section	Township	Range	Lot Idn	Feet from the	North/South line	Feet from the	East/West line	County
L	2	18 S	27 E		2185	SOUTH	990	WEST	EDDY

Bottom Hole Location If Different From Surface

UL or lot No.	Section	Township	Range	Lot Idn	Feet from the	North/South line	Feet from the	East/West line	County

Dedicated Acres 40	Joint or Infill	Consolidation Code	Order No.
-----------------------	-----------------	--------------------	-----------

NO ALLOWABLE WILL BE ASSIGNED TO THIS COMPLETION UNTIL ALL INTERESTS HAVE BEEN CONSOLIDATED OR A NON-STANDARD UNIT HAS BEEN APPROVED BY THE DIVISION

LOT 4	LOT 3	LOT 2	LOT 1	<p><b>OPERATOR CERTIFICATION</b></p> <p><i>I hereby certify the the information contained herein is true and complete to the best of my knowledge and belief.</i></p> <p> Signature</p> <p>DIANA J. CANNON Printed Name</p> <p>PRODUCTION ANALYST Title</p> <p>SEPTEMBER 27, 2004 Date</p>
39.59 ACRES	39.53 ACRES	39.44 ACRES	39.38 ACRES	
				
<p><b>SURVEYOR CERTIFICATION</b></p> <p><i>I hereby certify that the well location shown on this plat was plotted from field notes of actual surveys made by me or under my supervision and that the same is true and correct to the best of my belief.</i></p> <p>JULY 18, 2003 Date Surveyed</p> <p> Signature and Seal of Professional Surveyor</p> <p></p> <p>Certificate No. 3238 RONALD J. EIDSON MARY EIDSON 12641</p>				

**District I**  
1625 N. French Dr., Hobbs, NM 88240  
**District II**  
1301 W. Grand Ave., Artesia, NM 88210  
**District III**  
1000 Rio Brazos Rd., Aztec, NM 87410  
**District IV**  
1220 S. St Francis Dr., Santa Fe, NM 87505

State of New Mexico  
Energy, Minerals and Natural Resources  
Oil Conservation Division  
1220 S. St Francis Dr.  
Santa Fe, NM 87505


Form C-102

**WELL LOCATION AND ACREAGE DEDICATION PLAT**

API Number 30-015-33158	Pool Name RED LAKE; GLORIETA YESO, NORTHEAST	Pool Code 96836
Property Code 33435	Property Name NMBP STATE	Well No. 001
OGRID No. 14049	Operator Name MARBOB ENERGY CORP	Elevation 3549

**Surface And Bottom Hole Location**

UL or Lot L	Section 2	Township 18S	Range 27E	Lot Idn L	Feet From 2185	N/S Line S	Feet From 990	E/W Line W	County Eddy
Dedicated Acres 40		Joint or Infill		Consolidation Code		Order No.			

**OPERATOR CERTIFICATION**  
*I hereby certify that the information contained herein is true and complete to the best of my knowledge and belief.*  
Electronically Signed By: Diana Cannon  
Title: Production Analyst  
Date: 12/29/2003

**SURVEYOR CERTIFICATION**  
*I hereby certify that the well location shown on this plat was plotted from field notes of actual surveys made by me or under my supervision, and that the same is true and correct to the best of my belief.*  
Surveyed By: Ronald Eidson  
Date of Survey: 07/18/2003  
Certificate Number: 3239

**Production Summary Report**

API: 30-015-32218

SB STATE #001

Printed On: Tuesday, February 07 2017

		Production					Injection				
Year	Pool	Month	Oil(BBLS)	Gas(MCF)	Water(BBLS)	Days P/I	Water(BBLS)	Co2(MCF)	Gas(MCF)	Other	Pressure
2014	[51300] RED LAKE;QUEEN-GRAYBURG-SA	Jan	0	0	0	0	0	0	0	0	0
2014	[51300] RED LAKE;QUEEN-GRAYBURG-SA	Feb	0	0	0	0	0	0	0	0	0
2014	[51300] RED LAKE;QUEEN-GRAYBURG-SA	Mar	0	0	0	0	0	0	0	0	0
2014	[51300] RED LAKE;QUEEN-GRAYBURG-SA	Apr	135	1166	1031	30	0	0	0	0	0
2014	[51300] RED LAKE;QUEEN-GRAYBURG-SA	May	97	625	1172	31	0	0	0	0	0
2014	[51300] RED LAKE;QUEEN-GRAYBURG-SA	Jun	115	589	1463	30	0	0	0	0	0
2014	[51300] RED LAKE;QUEEN-GRAYBURG-SA	Jul	190	698	2429	31	0	0	0	0	0
2014	[51300] RED LAKE;QUEEN-GRAYBURG-SA	Aug	162	613	2506	31	0	0	0	0	0
2014	[51300] RED LAKE;QUEEN-GRAYBURG-SA	Sep	108	513	2261	30	0	0	0	0	0
2014	[51300] RED LAKE;QUEEN-GRAYBURG-SA	Oct	67	467	2016	30	0	0	0	0	0
2014	[51300] RED LAKE;QUEEN-GRAYBURG-SA	Nov	75	374	1871	30	0	0	0	0	0
2014	[51300] RED LAKE;QUEEN-GRAYBURG-SA	Dec	61	357	2002	31	0	0	0	0	0
2014	[96836] RED LAKE; GLORIETA-YESO, NORTHEAST	Jan	107	1175	1384	31	0	0	0	0	0

2014	[96836] RED LAKE; GLORIETA-YESO, NORTHEAST	Feb	107	810	1255	28	0	0	0	0	0
2014	[96836] RED LAKE; GLORIETA-YESO, NORTHEAST	Mar	116	679	2030	31	0	0	0	0	0
2014	[96836] RED LAKE; GLORIETA-YESO, NORTHEAST	Apr	55	549	421	30	0	0	0	0	0
2014	[96836] RED LAKE; GLORIETA-YESO, NORTHEAST	May	40	294	479	31	0	0	0	0	0
2014	[96836] RED LAKE; GLORIETA-YESO, NORTHEAST	Jun	47	277	598	30	0	0	0	0	0
2014	[96836] RED LAKE; GLORIETA-YESO, NORTHEAST	Jul	77	328	992	31	0	0	0	0	0
2014	[96836] RED LAKE; GLORIETA-YESO, NORTHEAST	Aug	66	289	1024	31	0	0	0	0	0
2014	[96836] RED LAKE; GLORIETA-YESO, NORTHEAST	Sep	45	241	923	30	0	0	0	0	0
2014	[96836] RED LAKE; GLORIETA-YESO, NORTHEAST	Oct	28	220	824	30	0	0	0	0	0
2014	[96836] RED LAKE; GLORIETA-YESO, NORTHEAST	Nov	31	176	764	30	0	0	0	0	0
2014	[96836] RED LAKE; GLORIETA-YESO, NORTHEAST	Dec	25	167	818	31	0	0	0	0	0
2015	[51300] RED LAKE;QUEEN-GRAYBURG-SA	Jan	52	397	1749	31	0	0	0	0	0
2015	[51300] RED LAKE;QUEEN-GRAYBURG-SA	Feb	79	456	2120	28	0	0	0	0	0
2015	[51300] RED LAKE;QUEEN-GRAYBURG-SA	Mar	32	634	600	30	0	0	0	0	0
2015	[51300] RED LAKE;QUEEN-GRAYBURG-SA	Apr	64	725	950	30	0	0	0	0	0
2015	[51300] RED LAKE;QUEEN-GRAYBURG-SA	May	48	668	644	31	0	0	0	0	0

2015	[51300] RED LAKE;QUEEN-GRAYBURG-SA	Jun	65	627	760	30	0	0	0	0	0
2015	[51300] RED LAKE;QUEEN-GRAYBURG-SA	Jul	61	636	610	31	0	0	0	0	0
2015	[51300] RED LAKE;QUEEN-GRAYBURG-SA	Aug	61	574	686	30	0	0	0	0	0
2015	[51300] RED LAKE;QUEEN-GRAYBURG-SA	Sep	62	568	700	30	0	0	0	0	0
2015	[51300] RED LAKE;QUEEN-GRAYBURG-SA	Oct	39	361	418	18	0	0	0	0	0
2015	[51300] RED LAKE;QUEEN-GRAYBURG-SA	Nov	83	484	703	30	0	0	0	0	0
2015	[51300] RED LAKE;QUEEN-GRAYBURG-SA	Dec	49	356	518	27	0	0	0	0	0
2015	[96836] RED LAKE; GLORIETA-YESO, NORTHEAST	Jan	21	187	714	31	0	0	0	0	0
2015	[96836] RED LAKE; GLORIETA-YESO, NORTHEAST	Feb	32	215	866	28	0	0	0	0	0
2015	[96836] RED LAKE; GLORIETA-YESO, NORTHEAST	Mar	14	299	245	30	0	0	0	0	0
2015	[96836] RED LAKE; GLORIETA-YESO, NORTHEAST	Apr	26	341	388	30	0	0	0	0	0
2015	[96836] RED LAKE; GLORIETA-YESO, NORTHEAST	May	18	314	263	31	0	0	0	0	0
2015	[96836] RED LAKE; GLORIETA-YESO, NORTHEAST	Jun	27	295	310	30	0	0	0	0	0
2015	[96836] RED LAKE; GLORIETA-YESO, NORTHEAST	Jul	25	299	249	31	0	0	0	0	0
2015	[96836] RED LAKE; GLORIETA-YESO, NORTHEAST	Aug	25	270	280	30	0	0	0	0	0
2015	[96836] RED LAKE; GLORIETA-YESO, NORTHEAST	Sep	25	267	286	30	0	0	0	0	0

2015	[96836] RED LAKE; GLORIETA-YESO, NORTHEAST	Oct	16	170	171	18	0	0	0	0	0
2015	[96836] RED LAKE; GLORIETA-YESO, NORTHEAST	Nov	34	228	287	30	0	0	0	0	0
2015	[96836] RED LAKE; GLORIETA-YESO, NORTHEAST	Dec	20	168	212	27	0	0	0	0	0
2016	[51300] RED LAKE;QUEEN-GRAYBURG-SA	Jan	41	376	347	19	0	0	0	0	0
2016	[51300] RED LAKE;QUEEN-GRAYBURG-SA	Feb	100	419	748	29	0	0	0	0	0
2016	[51300] RED LAKE;QUEEN-GRAYBURG-SA	Mar	64	589	510	23	0	0	0	0	0
2016	[51300] RED LAKE;QUEEN-GRAYBURG-SA	Apr	51	462	483	21	0	0	0	0	0
2016	[51300] RED LAKE;QUEEN-GRAYBURG-SA	May	72	457	532	31	0	0	0	0	0
2016	[51300] RED LAKE;QUEEN-GRAYBURG-SA	Jun	29	324	189	16	0	0	0	0	0
2016	[51300] RED LAKE;QUEEN-GRAYBURG-SA	Jul	80	746	637	31	0	0	0	0	0
2016	[51300] RED LAKE;QUEEN-GRAYBURG-SA	Aug	92	631	630	30	0	0	0	0	0
2016	[51300] RED LAKE;QUEEN-GRAYBURG-SA	Sep	74	742	443	30	0	0	0	0	0
2016	[51300] RED LAKE;QUEEN-GRAYBURG-SA	Oct	64	755	462	31	0	0	0	0	0
2016	[51300] RED LAKE;QUEEN-GRAYBURG-SA	Nov	65	743	385	30	0	0	0	0	0
2016	[96836] RED LAKE; GLORIETA-YESO, NORTHEAST	Jan	17	177	142	19	0	0	0	0	0
2016	[96836] RED LAKE; GLORIETA-YESO, NORTHEAST	Feb	41	197	305	29	0	0	0	0	0



2016	[96836] RED LAKE; GLORIETA-YESO, NORTHEAST	Mar	26	277	209	23	0	0	0	0	0
2016	[96836] RED LAKE; GLORIETA-YESO, NORTHEAST	Apr	21	217	197	21	0	0	0	0	0
2016	[96836] RED LAKE; GLORIETA-YESO, NORTHEAST	May	29	215	217	31	0	0	0	0	0
2016	[96836] RED LAKE; GLORIETA-YESO, NORTHEAST	Jun	12	153	77	16	0	0	0	0	0
2016	[96836] RED LAKE; GLORIETA-YESO, NORTHEAST	Jul	33	351	260	31	0	0	0	0	0
2016	[96836] RED LAKE; GLORIETA-YESO, NORTHEAST	Aug	38	297	257	30	0	0	0	0	0
2016	[96836] RED LAKE; GLORIETA-YESO, NORTHEAST	Sep	30	349	193	30	0	0	0	0	0
2016	[96836] RED LAKE; GLORIETA-YESO, NORTHEAST	Oct	26	355	189	31	0	0	0	0	0
2016	[96836] RED LAKE; GLORIETA-YESO, NORTHEAST	Nov	26	350	157	30	0	0	0	0	0

**Production Summary Report**  
**API: 30-015-42002**  
**SB STATE #002**  
**Printed On: Tuesday, February 07 2017**

Year	Pool	Month	Production				Injection				
			Oil(BBLS)	Gas(MCF)	Water(BBLS)	Days P/I	Water(BBLS)	Co2(MCF)	Gas(MCF)	Other	Pressure
2014	[96836] RED LAKE; GLORIETA-YESO, NORTHEAST	Apr	558	1728	8058	20	0	0	0	0	0
2014	[96836] RED LAKE; GLORIETA-YESO, NORTHEAST	May	1965	5978	10845	31	0	0	0	0	0
2014	[96836] RED LAKE; GLORIETA-YESO, NORTHEAST	Jun	882	4585	6390	30	0	0	0	0	0
2014	[96836] RED LAKE; GLORIETA-YESO, NORTHEAST	Jul	652	3614	4006	31	0	0	0	0	0
2014	[96836] RED LAKE; GLORIETA-YESO, NORTHEAST	Aug	604	3085	2814	29	0	0	0	0	0
2014	[96836] RED LAKE; GLORIETA-YESO, NORTHEAST	Sep	556	2816	2682	30	0	0	0	0	0
2014	[96836] RED LAKE; GLORIETA-YESO, NORTHEAST	Oct	415	2744	2328	29	0	0	0	0	0
2014	[96836] RED LAKE; GLORIETA-YESO, NORTHEAST	Nov	474	2400	2202	30	0	0	0	0	0
2014	[96836] RED LAKE; GLORIETA-YESO, NORTHEAST	Dec	478	2519	2355	31	0	0	0	0	0
2015	[96836] RED LAKE; GLORIETA-YESO, NORTHEAST	Jan	483	2258	2050	31	0	0	0	0	0
2015	[96836] RED LAKE; GLORIETA-YESO, NORTHEAST	Feb	284	1936	2283	28	0	0	0	0	0
2015	[96836] RED LAKE; GLORIETA-YESO, NORTHEAST	Mar	248	2312	2643	30	0	0	0	0	0
2015	[96836] RED LAKE; GLORIETA-YESO, NORTHEAST	Apr	267	2047	2321	30	0	0	0	0	0

2015	[96836] RED LAKE; GLORIETA-YESO, NORTHEAST	May	122	1602	1248	23	0	0	0	0	0
2015	[96836] RED LAKE; GLORIETA-YESO, NORTHEAST	Jun	266	1995	3293	30	0	0	0	0	0
2015	[96836] RED LAKE; GLORIETA-YESO, NORTHEAST	Jul	237	1974	2420	31	0	0	0	0	0
2015	[96836] RED LAKE; GLORIETA-YESO, NORTHEAST	Aug	220	1686	2224	30	0	0	0	0	0
2015	[96836] RED LAKE; GLORIETA-YESO, NORTHEAST	Sep	215	1735	1847	30	0	0	0	0	0
2015	[96836] RED LAKE; GLORIETA-YESO, NORTHEAST	Oct	95	1238	987	18	0	0	0	0	0
2015	[96836] RED LAKE; GLORIETA-YESO, NORTHEAST	Nov	237	1509	2157	30	0	0	0	0	0
2015	[96836] RED LAKE; GLORIETA-YESO, NORTHEAST	Dec	162	1048	1284	27	0	0	0	0	0
2016	[96836] RED LAKE; GLORIETA-YESO, NORTHEAST	Jan	125	1334	1060	19	0	0	0	0	0
2016	[96836] RED LAKE; GLORIETA-YESO, NORTHEAST	Feb	200	1102	1831	29	0	0	0	0	0
2016	[96836] RED LAKE; GLORIETA-YESO, NORTHEAST	Mar	138	1578	1193	23	0	0	0	0	0
2016	[96836] RED LAKE; GLORIETA-YESO, NORTHEAST	Apr	116	1481	1247	21	0	0	0	0	0
2016	[96836] RED LAKE; GLORIETA-YESO, NORTHEAST	May	148	1249	1402	31	0	0	0	0	0
2016	[96836] RED LAKE; GLORIETA-YESO, NORTHEAST	Jun	54	659	588	15	0	0	0	0	0
2016	[96836] RED LAKE; GLORIETA-YESO, NORTHEAST	Jul	134	1427	2183	31	0	0	0	0	0
2016	[96836] RED LAKE; GLORIETA-YESO, NORTHEAST	Aug	96	1252	1649	30	0	0	0	0	0

2016	[96836] RED LAKE; GLORIETA-YESO, NORTHEAST	Sep	102	1032	1299	29	0	0	0	0	0
2016	[96836] RED LAKE; GLORIETA-YESO, NORTHEAST	Oct	78	992	995	30	0	0	0	0	0
2016	[96836] RED LAKE; GLORIETA-YESO, NORTHEAST	Nov	87	1086	851	30	0	0	0	0	0

**Production Summary Report**

API: 30-015-42003

SB STATE #004

Printed On: Tuesday, February 07 2017

Year	Pool	Month	Production				Injection				
			Oil(BBLS)	Gas(MCF)	Water(BBLS)	Days P/I	Water(BBLS)	Co2(MCF)	Gas(MCF)	Other	Pressure
2014	[51120] RED LAKE;GLORIETA-YESO	Jul	434	2302	2590	31	0	0	0	0	0
2014	[51120] RED LAKE;GLORIETA-YESO	Aug	397	2076	2337	29	0	0	0	0	0
2014	[51120] RED LAKE;GLORIETA-YESO	Sep	376	1898	2282	30	0	0	0	0	0
2014	[51120] RED LAKE;GLORIETA-YESO	Oct	267	1818	1986	29	0	0	0	0	0
2014	[51120] RED LAKE;GLORIETA-YESO	Nov	282	1595	1858	30	0	0	0	0	0
2014	[51120] RED LAKE;GLORIETA-YESO	Dec	271	1683	1968	31	0	0	0	0	0
2015	[51120] RED LAKE;GLORIETA-YESO	Jan	249	1511	1706	31	0	0	0	0	0
2015	[51120] RED LAKE;GLORIETA-YESO	Feb	397	1524	2096	28	0	0	0	0	0
2015	[51120] RED LAKE;GLORIETA-YESO	Mar	210	1282	1428	30	0	0	0	0	0
2015	[51120] RED LAKE;GLORIETA-YESO	Apr	267	1110	1015	30	0	0	0	0	0
2015	[51120] RED LAKE;GLORIETA-YESO	May	167	1299	982	31	0	0	0	0	0
2015	[51120] RED LAKE;GLORIETA-YESO	Jun	226	1067	1358	30	0	0	0	0	0
2015	[51120] RED LAKE;GLORIETA-YESO	Jul	213	987	1132	31	0	0	0	0	0
2015	[51120] RED LAKE;GLORIETA-YESO	Aug	173	844	1112	30	0	0	0	0	0
2015	[51120] RED LAKE;GLORIETA-YESO	Sep	167	898	978	30	0	0	0	0	0
2015	[51120] RED LAKE;GLORIETA-YESO	Oct	102	651	594	18	0	0	0	0	0
2015	[51120] RED LAKE;GLORIETA-YESO	Nov	206	720	1174	30	0	0	0	0	0
2015	[51120] RED LAKE;GLORIETA-YESO	Dec	139	461	730	27	0	0	0	0	0
2016	[51120] RED LAKE;GLORIETA-YESO	Jan	98	534	587	19	0	0	0	0	0
2016	[51120] RED LAKE;GLORIETA-YESO	Feb	174	556	1071	29	0	0	0	0	0
2016	[51120] RED LAKE;GLORIETA-YESO	Mar	87	463	530	16	0	0	0	0	0
2016	[51120] RED LAKE;GLORIETA-YESO	Apr	122	746	910	21	0	0	0	0	0
2016	[51120] RED LAKE;GLORIETA-YESO	May	163	714	892	31	0	0	0	0	0
2016	[51120] RED LAKE;GLORIETA-YESO	Jun	61	406	337	16	0	0	0	0	0
2016	[51120] RED LAKE;GLORIETA-YESO	Jul	177	1062	1212	31	0	0	0	0	0
2016	[51120] RED LAKE;GLORIETA-YESO	Aug	95	929	702	27	0	0	0	0	0

2016	[51120] RED LAKE;GLORIETA-YESO	Sep	110	975	901	29	0	0	0	0	0
2016	[51120] RED LAKE;GLORIETA-YESO	Oct	106	963	923	31	0	0	0	0	0
2016	[51120] RED LAKE;GLORIETA-YESO	Nov	90	779	766	30	0	0	0	0	0

**Production Summary Report**  
**API: 30-015-32231**  
**TDF STATE #001**  
**Printed On: Tuesday, February 07 2017**

Year	Pool	Month	Production				Injection				
			Oil(BBLS)	Gas(MCF)	Water(BBLS)	Days P/I	Water(BBLS)	Co2(MCF)	Gas(MCF)	Other	Pressure
2014	[51300] RED LAKE;QUEEN-GRAYBURG-SA	Jan	0	0	0	0	0	0	0	0	0
2014	[51300] RED LAKE;QUEEN-GRAYBURG-SA	Feb	0	0	0	0	0	0	0	0	0
2014	[51300] RED LAKE;QUEEN-GRAYBURG-SA	Mar	0	0	0	0	0	0	0	0	0
2014	[51300] RED LAKE;QUEEN-GRAYBURG-SA	Apr	0	0	0	30	0	0	0	0	0
2014	[51300] RED LAKE;QUEEN-GRAYBURG-SA	May	0	0	0	31	0	0	0	0	0
2014	[51300] RED LAKE;QUEEN-GRAYBURG-SA	Jun	0	0	0	30	0	0	0	0	0
2014	[51300] RED LAKE;QUEEN-GRAYBURG-SA	Jul	0	0	0	31	0	0	0	0	0
2014	[51300] RED LAKE;QUEEN-GRAYBURG-SA	Aug	0	0	0	0	0	0	0	0	0
2014	[51300] RED LAKE;QUEEN-GRAYBURG-SA	Sep	0	0	0	0	0	0	0	0	0
2014	[51300] RED LAKE;QUEEN-GRAYBURG-SA	Oct	39	717	215	31	0	0	0	0	0
2014	[51300] RED LAKE;QUEEN-GRAYBURG-SA	Nov	16	1014	165	30	0	0	0	0	0
2014	[51300] RED LAKE;QUEEN-GRAYBURG-SA	Dec	18	1194	173	31	0	0	0	0	0
2014	[96836] RED LAKE; GLORIETA-YESO, NORTHEAST	Jan	123	1780	812	29	0	0	0	0	0

2014	[96836] RED LAKE; GLORIETA-YESO, NORTHEAST	Feb	160	1265	891	28	0	0	0	0	0
2014	[96836] RED LAKE; GLORIETA-YESO, NORTHEAST	Mar	141	1594	1102	28	0	0	0	0	0
2014	[96836] RED LAKE; GLORIETA-YESO, NORTHEAST	Apr	362	1148	571	30	0	0	0	0	0
2014	[96836] RED LAKE; GLORIETA-YESO, NORTHEAST	May	254	1466	556	31	0	0	0	0	0
2014	[96836] RED LAKE; GLORIETA-YESO, NORTHEAST	Jun	187	922	525	30	0	0	0	0	0
2014	[96836] RED LAKE; GLORIETA-YESO, NORTHEAST	Jul	119	1068	432	29	0	0	0	0	0
2014	[96836] RED LAKE; GLORIETA-YESO, NORTHEAST	Aug	78	595	442	31	0	0	0	0	0
2014	[96836] RED LAKE; GLORIETA-YESO, NORTHEAST	Sep	67	396	416	30	0	0	0	0	0
2014	[96836] RED LAKE; GLORIETA-YESO, NORTHEAST	Oct	16	338	88	31	0	0	0	0	0
2014	[96836] RED LAKE; GLORIETA-YESO, NORTHEAST	Nov	7	477	68	30	0	0	0	0	0
2014	[96836] RED LAKE; GLORIETA-YESO, NORTHEAST	Dec	8	562	71	31	0	0	0	0	0
2015	[51300] RED LAKE;QUEEN-GRAYBURG-SA	Jan	22	1240	179	31	0	0	0	0	0
2015	[51300] RED LAKE;QUEEN-GRAYBURG-SA	Feb	51	2109	266	27	0	0	0	0	0
2015	[51300] RED LAKE;QUEEN-GRAYBURG-SA	Mar	144	1301	1236	30	0	0	0	0	0
2015	[51300] RED LAKE;QUEEN-GRAYBURG-SA	Apr	128	498	1383	30	0	0	0	0	0
2015	[51300] RED LAKE;QUEEN-GRAYBURG-SA	May	95	673	955	31	0	0	0	0	0



2015	[51300] RED LAKE;QUEEN-GRAYBURG-SA	Jun	121	766	1177	30	0	0	0	0	0
2015	[51300] RED LAKE;QUEEN-GRAYBURG-SA	Jul	91	677	896	31	0	0	0	0	0
2015	[51300] RED LAKE;QUEEN-GRAYBURG-SA	Aug	80	861	814	31	0	0	0	0	0
2015	[51300] RED LAKE;QUEEN-GRAYBURG-SA	Sep	86	780	782	30	0	0	0	0	0
2015	[51300] RED LAKE;QUEEN-GRAYBURG-SA	Oct	43	419	455	18	0	0	0	0	0
2015	[51300] RED LAKE;QUEEN-GRAYBURG-SA	Nov	107	412	1093	30	0	0	0	0	0
2015	[51300] RED LAKE;QUEEN-GRAYBURG-SA	Dec	82	573	725	27	0	0	0	0	0
2015	[96836] RED LAKE; GLORIETA-YESO, NORTHEAST	Jan	9	584	73	31	0	0	0	0	0
2015	[96836] RED LAKE; GLORIETA-YESO, NORTHEAST	Feb	21	993	108	27	0	0	0	0	0
2015	[96836] RED LAKE; GLORIETA-YESO, NORTHEAST	Mar	59	612	505	30	0	0	0	0	0
2015	[96836] RED LAKE; GLORIETA-YESO, NORTHEAST	Apr	52	234	564	30	0	0	0	0	0
2015	[96836] RED LAKE; GLORIETA-YESO, NORTHEAST	May	39	317	390	31	0	0	0	0	0
2015	[96836] RED LAKE; GLORIETA-YESO, NORTHEAST	Jun	50	360	481	30	0	0	0	0	0
2015	[96836] RED LAKE; GLORIETA-YESO, NORTHEAST	Jul	37	319	366	31	0	0	0	0	0
2015	[96836] RED LAKE; GLORIETA-YESO, NORTHEAST	Aug	33	405	332	31	0	0	0	0	0
2015	[96836] RED LAKE; GLORIETA-YESO, NORTHEAST	Sep	36	367	320	30	0	0	0	0	0

2015	[96836] RED LAKE; GLORIETA-YESO, NORTHEAST	Oct	17	197	186	18	0	0	0	0	0
2015	[96836] RED LAKE; GLORIETA-YESO, NORTHEAST	Nov	44	194	447	30	0	0	0	0	0
2015	[96836] RED LAKE; GLORIETA-YESO, NORTHEAST	Dec	34	270	296	27	0	0	0	0	0
2016	[51300] RED LAKE;QUEEN-GRAYBURG-SA	Jan	72	282	547	21	0	0	0	0	0
2016	[51300] RED LAKE;QUEEN-GRAYBURG-SA	Feb	72	631	705	29	0	0	0	0	0
2016	[51300] RED LAKE;QUEEN-GRAYBURG-SA	Mar	65	613	607	23	0	0	0	0	0
2016	[51300] RED LAKE;QUEEN-GRAYBURG-SA	Apr	74	529	559	22	0	0	0	0	0
2016	[51300] RED LAKE;QUEEN-GRAYBURG-SA	May	114	554	696	31	0	0	0	0	0
2016	[51300] RED LAKE;QUEEN-GRAYBURG-SA	Jun	35	367	230	15	0	0	0	0	0
2016	[51300] RED LAKE;QUEEN-GRAYBURG-SA	Jul	108	554	726	31	0	0	0	0	0
2016	[51300] RED LAKE;QUEEN-GRAYBURG-SA	Aug	72	360	291	26	0	0	0	0	0
2016	[51300] RED LAKE;QUEEN-GRAYBURG-SA	Sep	97	463	506	30	0	0	0	0	0
2016	[51300] RED LAKE;QUEEN-GRAYBURG-SA	Oct	84	589	458	30	0	0	0	0	0
2016	[51300] RED LAKE;QUEEN-GRAYBURG-SA	Nov	80	504	430	30	0	0	0	0	0
2016	[96836] RED LAKE; GLORIETA-YESO, NORTHEAST	Jan	30	133	223	21	0	0	0	0	0
2016	[96836] RED LAKE; GLORIETA-YESO, NORTHEAST	Feb	29	297	288	29	0	0	0	0	0

2016	[96836] RED LAKE; GLORIETA-YESO, NORTHEAST	Mar	27	289	248	23	0	0	0	0	0
2016	[96836] RED LAKE; GLORIETA-YESO, NORTHEAST	Apr	30	249	228	22	0	0	0	0	0
2016	[96836] RED LAKE; GLORIETA-YESO, NORTHEAST	May	47	261	284	31	0	0	0	0	0
2016	[96836] RED LAKE; GLORIETA-YESO, NORTHEAST	Jun	15	173	94	15	0	0	0	0	0
2016	[96836] RED LAKE; GLORIETA-YESO, NORTHEAST	Jul	44	261	296	31	0	0	0	0	0
2016	[96836] RED LAKE; GLORIETA-YESO, NORTHEAST	Aug	29	169	119	26	0	0	0	0	0
2016	[96836] RED LAKE; GLORIETA-YESO, NORTHEAST	Sep	40	218	218	30	0	0	0	0	0
2016	[96836] RED LAKE; GLORIETA-YESO, NORTHEAST	Oct	34	277	187	30	0	0	0	0	0
2016	[96836] RED LAKE; GLORIETA-YESO, NORTHEAST	Nov	33	237	176	30	0	0	0	0	0



2014	[96836] RED LAKE; GLORIETA-YESO, NORTHEAST	Feb	0	0	0	0	0	0	0	0	0
2014	[96836] RED LAKE; GLORIETA-YESO, NORTHEAST	Mar	0	0	0	0	0	0	0	0	0
2014	[96836] RED LAKE; GLORIETA-YESO, NORTHEAST	Apr	196	285	3546	30	0	0	0	0	0
2014	[96836] RED LAKE; GLORIETA-YESO, NORTHEAST	May	106	147	557	31	0	0	0	0	0
2014	[96836] RED LAKE; GLORIETA-YESO, NORTHEAST	Jun	112	293	734	30	0	0	0	0	0
2014	[96836] RED LAKE; GLORIETA-YESO, NORTHEAST	Jul	90	236	719	31	0	0	0	0	0
2014	[96836] RED LAKE; GLORIETA-YESO, NORTHEAST	Aug	66	279	685	31	0	0	0	0	0
2014	[96836] RED LAKE; GLORIETA-YESO, NORTHEAST	Sep	48	209	653	30	0	0	0	0	0
2014	[96836] RED LAKE; GLORIETA-YESO, NORTHEAST	Oct	39	195	551	31	0	0	0	0	0
2014	[96836] RED LAKE; GLORIETA-YESO, NORTHEAST	Nov	16	381	470	30	0	0	0	0	0
2014	[96836] RED LAKE; GLORIETA-YESO, NORTHEAST	Dec	18	381	478	31	0	0	0	0	0
2015	[51300] RED LAKE;QUEEN-GRAYBURG-SA	Jan	9	194	157	31	0	0	0	0	0
2015	[51300] RED LAKE;QUEEN-GRAYBURG-SA	Feb	20	190	190	28	0	0	0	0	0
2015	[51300] RED LAKE;QUEEN-GRAYBURG-SA	Mar	41	164	203	30	0	0	0	0	0
2015	[51300] RED LAKE;QUEEN-GRAYBURG-SA	Apr	22	105	145	30	0	0	0	0	0
2015	[51300] RED LAKE;QUEEN-GRAYBURG-SA	May	23	125	156	31	0	0	0	0	0

2015	[51300] RED LAKE;QUEEN-GRAYBURG-SA	Jun	27	45	197	30	0	0	0	0	0
2015	[51300] RED LAKE;QUEEN-GRAYBURG-SA	Jul	25	51	166	31	0	0	0	0	0
2015	[51300] RED LAKE;QUEEN-GRAYBURG-SA	Aug	26	15	190	31	0	0	0	0	0
2015	[51300] RED LAKE;QUEEN-GRAYBURG-SA	Sep	29	8	183	30	0	0	0	0	0
2015	[51300] RED LAKE;QUEEN-GRAYBURG-SA	Oct	15	106	118	20	0	0	0	0	0
2015	[51300] RED LAKE;QUEEN-GRAYBURG-SA	Nov	34	180	247	29	0	0	0	0	0
2015	[51300] RED LAKE;QUEEN-GRAYBURG-SA	Dec	27	225	169	27	0	0	0	0	0
2015	[96836] RED LAKE; GLORIETA-YESO, NORTHEAST	Jan	22	411	384	31	0	0	0	0	0
2015	[96836] RED LAKE; GLORIETA-YESO, NORTHEAST	Feb	48	405	466	28	0	0	0	0	0
2015	[96836] RED LAKE; GLORIETA-YESO, NORTHEAST	Mar	98	348	497	30	0	0	0	0	0
2015	[96836] RED LAKE; GLORIETA-YESO, NORTHEAST	Apr	53	224	355	30	0	0	0	0	0
2015	[96836] RED LAKE; GLORIETA-YESO, NORTHEAST	May	58	265	382	31	0	0	0	0	0
2015	[96836] RED LAKE; GLORIETA-YESO, NORTHEAST	Jun	64	97	482	30	0	0	0	0	0
2015	[96836] RED LAKE; GLORIETA-YESO, NORTHEAST	Jul	61	109	407	31	0	0	0	0	0
2015	[96836] RED LAKE; GLORIETA-YESO, NORTHEAST	Aug	64	31	466	31	0	0	0	0	0
2015	[96836] RED LAKE; GLORIETA-YESO, NORTHEAST	Sep	69	16	447	30	0	0	0	0	0

2015	[96836] RED LAKE; GLORIETA-YESO, NORTHEAST	Oct	38	225	289	20	0	0	0	0	0
2015	[96836] RED LAKE; GLORIETA-YESO, NORTHEAST	Nov	83	383	603	29	0	0	0	0	0
2015	[96836] RED LAKE; GLORIETA-YESO, NORTHEAST	Dec	65	479	415	27	0	0	0	0	0
2016	[51300] RED LAKE;QUEEN-GRAYBURG-SA	Jan	26	126	164	22	0	0	0	0	0
2016	[51300] RED LAKE;QUEEN-GRAYBURG-SA	Feb	29	169	248	29	0	0	0	0	0
2016	[51300] RED LAKE;QUEEN-GRAYBURG-SA	Mar	30	169	206	23	0	0	0	0	0
2016	[51300] RED LAKE;QUEEN-GRAYBURG-SA	Apr	27	167	226	23	0	0	0	0	0
2016	[51300] RED LAKE;QUEEN-GRAYBURG-SA	May	24	189	159	29	0	0	0	0	0
2016	[51300] RED LAKE;QUEEN-GRAYBURG-SA	Jun	13	124	85	16	0	0	0	0	0
2016	[51300] RED LAKE;QUEEN-GRAYBURG-SA	Jul	35	227	244	30	0	0	0	0	0
2016	[51300] RED LAKE;QUEEN-GRAYBURG-SA	Aug	34	189	181	31	0	0	0	0	0
2016	[51300] RED LAKE;QUEEN-GRAYBURG-SA	Sep	33	172	176	30	0	0	0	0	0
2016	[51300] RED LAKE;QUEEN-GRAYBURG-SA	Oct	35	167	189	31	0	0	0	0	0
2016	[51300] RED LAKE;QUEEN-GRAYBURG-SA	Nov	33	158	178	30	0	0	0	0	0
2016	[96836] RED LAKE; GLORIETA-YESO, NORTHEAST	Jan	64	267	401	22	0	0	0	0	0
2016	[96836] RED LAKE; GLORIETA-YESO, NORTHEAST	Feb	71	360	608	29	0	0	0	0	0

2016	[96836] RED LAKE; GLORIETA-YESO, NORTHEAST	Mar	73	359	504	23	0	0	0	0	0
2016	[96836] RED LAKE; GLORIETA-YESO, NORTHEAST	Apr	65	355	554	23	0	0	0	0	0
2016	[96836] RED LAKE; GLORIETA-YESO, NORTHEAST	May	59	402	391	29	0	0	0	0	0
2016	[96836] RED LAKE; GLORIETA-YESO, NORTHEAST	Jun	30	263	209	16	0	0	0	0	0
2016	[96836] RED LAKE; GLORIETA-YESO, NORTHEAST	Jul	85	482	599	30	0	0	0	0	0
2016	[96836] RED LAKE; GLORIETA-YESO, NORTHEAST	Aug	84	403	444	31	0	0	0	0	0
2016	[96836] RED LAKE; GLORIETA-YESO, NORTHEAST	Sep	81	365	401	30	0	0	0	0	0
2016	[96836] RED LAKE; GLORIETA-YESO, NORTHEAST	Oct	85	355	463	31	0	0	0	0	0
2016	[96836] RED LAKE; GLORIETA-YESO, NORTHEAST	Nov	81	335	437	30	0	0	0	0	0





2014	[96836] RED LAKE; GLORIETA-YESO, NORTHEAST	Feb	0	0	0	0	0	0	0	0	0
2014	[96836] RED LAKE; GLORIETA-YESO, NORTHEAST	Mar	0	214	0	31	0	0	0	0	0
2014	[96836] RED LAKE; GLORIETA-YESO, NORTHEAST	Apr	44	110	398	30	0	0	0	0	0
2014	[96836] RED LAKE; GLORIETA-YESO, NORTHEAST	May	30	250	480	31	0	0	0	0	0
2014	[96836] RED LAKE; GLORIETA-YESO, NORTHEAST	Jun	21	355	475	30	0	0	0	0	0
2014	[96836] RED LAKE; GLORIETA-YESO, NORTHEAST	Jul	8	331	458	31	0	0	0	0	0
2014	[96836] RED LAKE; GLORIETA-YESO, NORTHEAST	Aug	7	315	433	31	0	0	0	0	0
2014	[96836] RED LAKE; GLORIETA-YESO, NORTHEAST	Sep	21	326	203	30	0	0	0	0	0
2014	[96836] RED LAKE; GLORIETA-YESO, NORTHEAST	Oct	27	398	41	30	0	0	0	0	0
2014	[96836] RED LAKE; GLORIETA-YESO, NORTHEAST	Nov	20	114	41	30	0	0	0	0	0
2014	[96836] RED LAKE; GLORIETA-YESO, NORTHEAST	Dec	19	191	34	31	0	0	0	0	0
2015	[51300] RED LAKE;QUEEN-GRAYBURG-SA	Jan	44	713	90	31	0	0	0	0	0
2015	[51300] RED LAKE;QUEEN-GRAYBURG-SA	Feb	80	352	149	28	0	0	0	0	0
2015	[51300] RED LAKE;QUEEN-GRAYBURG-SA	Mar	29	365	705	30	0	0	0	0	0
2015	[51300] RED LAKE;QUEEN-GRAYBURG-SA	Apr	26	409	615	30	0	0	0	0	0
2015	[51300] RED LAKE;QUEEN-GRAYBURG-SA	May	24	252	573	31	0	0	0	0	0

2015	[51300] RED LAKE;QUEEN-GRAYBURG-SA	Jun	28	244	723	30	0	0	0	0	0
2015	[51300] RED LAKE;QUEEN-GRAYBURG-SA	Jul	16	286	610	31	0	0	0	0	0
2015	[51300] RED LAKE;QUEEN-GRAYBURG-SA	Aug	32	350	686	31	0	0	0	0	0
2015	[51300] RED LAKE;QUEEN-GRAYBURG-SA	Sep	35	406	607	30	0	0	0	0	0
2015	[51300] RED LAKE;QUEEN-GRAYBURG-SA	Oct	17	321	421	18	0	0	0	0	0
2015	[51300] RED LAKE;QUEEN-GRAYBURG-SA	Nov	43	309	921	29	0	0	0	0	0
2015	[51300] RED LAKE;QUEEN-GRAYBURG-SA	Dec	32	373	622	27	0	0	0	0	0
2015	[96836] RED LAKE; GLORIETA-YESO, NORTHEAST	Jan	18	336	37	31	0	0	0	0	0
2015	[96836] RED LAKE; GLORIETA-YESO, NORTHEAST	Feb	33	166	61	28	0	0	0	0	0
2015	[96836] RED LAKE; GLORIETA-YESO, NORTHEAST	Mar	12	172	288	30	0	0	0	0	0
2015	[96836] RED LAKE; GLORIETA-YESO, NORTHEAST	Apr	11	193	251	30	0	0	0	0	0
2015	[96836] RED LAKE; GLORIETA-YESO, NORTHEAST	May	10	119	234	31	0	0	0	0	0
2015	[96836] RED LAKE; GLORIETA-YESO, NORTHEAST	Jun	12	115	295	30	0	0	0	0	0
2015	[96836] RED LAKE; GLORIETA-YESO, NORTHEAST	Jul	6	135	249	31	0	0	0	0	0
2015	[96836] RED LAKE; GLORIETA-YESO, NORTHEAST	Aug	14	165	280	31	0	0	0	0	0
2015	[96836] RED LAKE; GLORIETA-YESO, NORTHEAST	Sep	14	191	248	30	0	0	0	0	0

2015	[96836] RED LAKE; GLORIETA-YESO, NORTHEAST	Oct	7	151	172	18	0	0	0	0	0
2015	[96836] RED LAKE; GLORIETA-YESO, NORTHEAST	Nov	17	145	376	29	0	0	0	0	0
2015	[96836] RED LAKE; GLORIETA-YESO, NORTHEAST	Dec	13	176	254	27	0	0	0	0	0
2016	[51300] RED LAKE;QUEEN-GRAYBURG-SA	Jan	31	246	574	21	0	0	0	0	0
2016	[51300] RED LAKE;QUEEN-GRAYBURG-SA	Feb	33	306	860	29	0	0	0	0	0
2016	[51300] RED LAKE;QUEEN-GRAYBURG-SA	Mar	22	218	547	23	0	0	0	0	0
2016	[51300] RED LAKE;QUEEN-GRAYBURG-SA	Apr	27	150	654	19	0	0	0	0	0
2016	[51300] RED LAKE;QUEEN-GRAYBURG-SA	May	42	302	1218	31	0	0	0	0	0
2016	[51300] RED LAKE;QUEEN-GRAYBURG-SA	Jun	19	188	441	16	0	0	0	0	0
2016	[51300] RED LAKE;QUEEN-GRAYBURG-SA	Jul	51	460	1372	31	0	0	0	0	0
2016	[51300] RED LAKE;QUEEN-GRAYBURG-SA	Aug	36	230	613	27	0	0	0	0	0
2016	[51300] RED LAKE;QUEEN-GRAYBURG-SA	Sep	48	174	1081	27	0	0	0	0	0
2016	[51300] RED LAKE;QUEEN-GRAYBURG-SA	Oct	29	41	673	18	0	0	0	0	0
2016	[51300] RED LAKE;QUEEN-GRAYBURG-SA	Nov	19	1	393	11	0	0	0	0	0
2016	[96836] RED LAKE; GLORIETA-YESO, NORTHEAST	Jan	13	116	235	21	0	0	0	0	0
2016	[96836] RED LAKE; GLORIETA-YESO, NORTHEAST	Feb	14	144	351	29	0	0	0	0	0

2016	[96836] RED LAKE; GLORIETA-YESO, NORTHEAST	Mar	9	102	224	23	0	0	0	0	0
2016	[96836] RED LAKE; GLORIETA-YESO, NORTHEAST	Apr	11	71	267	19	0	0	0	0	0
2016	[96836] RED LAKE; GLORIETA-YESO, NORTHEAST	May	17	142	497	31	0	0	0	0	0
2016	[96836] RED LAKE; GLORIETA-YESO, NORTHEAST	Jun	8	89	180	16	0	0	0	0	0
2016	[96836] RED LAKE; GLORIETA-YESO, NORTHEAST	Jul	21	217	561	31	0	0	0	0	0
2016	[96836] RED LAKE; GLORIETA-YESO, NORTHEAST	Aug	15	108	251	27	0	0	0	0	0
2016	[96836] RED LAKE; GLORIETA-YESO, NORTHEAST	Sep	19	82	453	27	0	0	0	0	0
2016	[96836] RED LAKE; GLORIETA-YESO, NORTHEAST	Oct	12	19	275	18	0	0	0	0	0
2016	[96836] RED LAKE; GLORIETA-YESO, NORTHEAST	Nov	8	1	160	11	0	0	0	0	0



February 7, 2017

Mr. Michael McMillan  
New Mexico Oil Conservation Division  
1220 South St Frances Drive  
Santa Fe NM 87505

Re: Request to Administratively Amend Surface Commingling Authority  
Order PLC-207-B  
SB State, TDF State, and NMBP State Leases  
Northeast Red Lake Glorieta-Yeso (Oil - 96836) Pool  
Eddy County, New Mexico

Dear Mr. McMillan:

Apache respectfully requests administrative approval to amend Order PLC-207-B, as approved on July 20, 2004. This order, as written, requires "...separate measurement of water and separate, continuous measurement of oil prior to commingling" due to diverse ownership.

**Proposal:**

Apache proposes to allocate production between the following wells, based on frequent and periodic well tests:

- SB State #1: API 30-015-32218
- SB State #2: API 30-015-42002
- SB State #4: API 30-015-42003
- NMBP State #1: API 30-015-33158
- TDF State #1: API 30-015-32231

Note that the following well will continue to be measured separately, as to oil and gas production, as this well has a separate test and metering installation:

- TDF State #2: API 30-015-32900

This request is the result of deterioration of the existing separation and measurement equipment at the common facility. Previously, the facilities included separation equipment for each lease, as required by the approved order. Over time the facilities have become unusable. The productive ability of these leases does not justify the capital expenditure necessary to replace this equipment, and requiring such replacement will cause premature abandonment of these otherwise economic properties. This will, of

Mr. Michael McMillan  
PLC-207-B Amendment Request  
Page 2

course, result in the loss of revenue to the State of New Mexico and the abandonment of recoverable reserves in place.

**Measurement:**

The TDF State #2 will be maintained on separate measurement due to facilities in place. The remaining TDF State well, the SB State wells, and the NMBP state well will share a common separation, storage, and metering facility. A test separator with oil and gas measurement capability will be used, on a rotating basis, to routinely meter each well's production stream separately. This individual well test data will be used to fairly allocate oil and gas production to each lease, based on a pro-rata share or total production. The wells will be rotated through the test separator on an equal time based, estimated to occur approximately every five days. This will assure proper allocation of production on a monthly basis.

A facility diagram is included, illustrating before and after arrangements should this request be approved.

**Notification:**

The working, royalty, and overriding royalty interests differ slightly between the three leases. The State of New Mexico has a consistent 1/8 royalty interest across all the leases. A service list with certified mail numbers is attached to this request. This notice was mailed today, February 7, 2017.

Please advise if this request is acceptable. If you need further information, please contact Isabel Alonso, Regulatory Analyst, at 432-818-1142 or [Isabel.alonso@apachecorp.com](mailto:Isabel.alonso@apachecorp.com) or you may contact me at [mark.henkhaus@apachecorp.com](mailto:mark.henkhaus@apachecorp.com) or by telephone at 432-818-1883.

Sincerely,



R. Mark Henkhaus, PE  
Regulatory Manager  
Permian Region



# NEW MEXICO ENERGY, MINERALS and NATURAL RESOURCES DEPARTMENT

**BILL RICHARDSON**

Governor

**Joanna Prukop**

Cabinet Secretary

**Mark E. Fesmire, P.E.**

Director

Oil Conservation Division

## **COMMINGLING ORDER PLC-207-B**

Marbob Energy Corporation  
P.O. Box 227  
Artesia, New Mexico 88211-0227

Attention: Mr. Dean Chumbley:

Marbob Energy Corporation is hereby authorized to surface commingle production from the following leases and pools - all located within Eddy County, New Mexico:

### **POOLS:**

Red Lake Queen-Grayburg-San Andres (Oil - 51300), and  
Northeast Red Lake Glorieta-Yeso (Oil - 96836)

### **LEASES:**

SB State Lease (Lease No. B-7244)  
SW/4 NW/4, Section 2, Township 18 South, Range 27 East, NMPM

TDF State Lease (Lease No. B-7244)  
SE/4 NW/4, Section 2, Township 18 South, Range 27 East, NMPM

NMBP State Lease (Lease No. B-7244)  
NW/4 SW/4, Section 2, Township 18 South, Range 27 East, NMPM

### **WELLS:**

SB State Well No. 1 (API No. 30-015-32218) Unit E  
TDF State No. 1 (API No. 30-015-32231) Unit F  
TDF State No. 2 (API No. 30-015-32900) Unit F  
NMPB State No. 1 (API No. 30-015-33158) Unit L

Due to diverse ownership between the above-described leases, each of these leases shall have separate measurement of water and separate, continuous measurement of oil prior to commingling. Allocation meters shall be regularly calibrated for accuracy. All liquids production shall be commingled into the SB State Tank Battery located in the SW/4 NW/4, Section 2, Township 18 South, Range 27 East, NMPM. Gas shall not be commingled.



*Administrative Order PLC-207-B*

*Marbob Energy Corporation*

*July 20, 2004*

*Page 2*

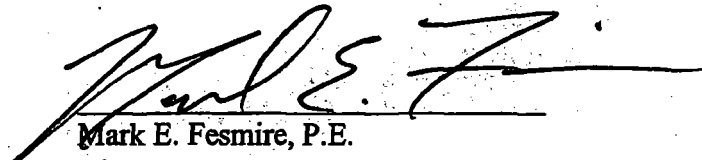
---

**NOTE:** This installation shall be installed and operated in accordance with the applicable provisions of Rule 309-B of the Division Rules and Regulations and the Division "Manual for the Installation and Operation of Commingling Facilities." It is the responsibility of the producer to notify the transporter of this commingling authority.

**FURTHER:** The operator shall notify the supervisor of the Artesia District office prior to implementation of the commingling process.

**Remarks:** This amended surface commingling order deletes previous authority to surface commingle production from the MJ State Lease comprising the NW/4 NW/4 of Section 2, and from the BM State Lease comprising the NE/4 SW/4 of Section 2, both in Township 18 South, Range 27 East, NMPM. This order now authorizes the surface commingling of Northeast Red Lake Glorieta-Yeso and Red Lake Queen-Grayburg-San Andres Pool production from the SB State Lease, TDF State Lease, and the NMBP State Lease, all as fully described by this order.

DONE at Santa Fe, New Mexico, on this 20th day of July, 2004.

  
Mark E. Fesmire, P.E.  
Director

MEF/DRC

cc: Oil Conservation Division - Artesia  
State Land Office - Santa Fe



February 2, 2017

*Sent via certified mail*

Interest Owner Name

Street #

City, State Zip

RE: Notice of Intent to Surface Commingle Production from the  
SB State #1, #2, #4; TDF State #1, #2; and NMBP State #1  
Section 2, Township 18 South, Range 27 East  
Eddy County, New Mexico

Dear Interest Owners,

Apache Corporation (“Apache”) hereby requests your approval to surface commingle production from the following existing wells:

- SB State #1: API 30-015-32218, a vertical well located at 1,650’ FNL and 330’ FWL, UL E, Section 2, T-18-S, R-27-E, producing from the NE Red Lake Glorieta Yeso pool
- SB State #2: API 30-015-42002, a vertical well located at 1,900’ FNL and 990’ FWL, UL E, Section 2, T-18-S, R-27-E, producing from the NE Red Lake Glorieta Yeso pool
- SB State #4: API 30-015-42003, a vertical well located at 2,515’ FNL and 800’ FWL, UL E, Section 2, T-18-S, R-27-E, producing from the NE Red Lake Glorieta Yeso pool
- TDF State #1: API 30-015-32231, a vertical well located at 1,960’ FNL and 1,650’ FWL, UL E, Section 2, T-18-S, R-27-E, producing from the NE Red Lake Glorieta Yeso pool
- TDF State #2: API 30-015-32900, a vertical well located at 1,650’ FNL and 2,305’ FWL, UL E, Section 2, T-18-S, R-27-E, producing from the NE Red Lake Glorieta Yeso pool
- NMBP State #1: API 30-015-33158, a vertical well located at 2,185’ FNL and 990’ FWL, UL E, Section 2, T-18-S, R-27-E, producing from the NE Red Lake Glorieta Yeso pool

Please be aware that the interest ownership differs slightly between the SB State, TDF State, and NMBP State wells. In order to commingle production at the surface, production from each of the wells must be allocated by well test to account for the difference in ownership.

Enclosed for your review is a copy of Apache’s application requesting approval from the Bureau of Land Management and the New Mexico Oil Conservation Division to surface commingle the referenced wells. To evidence your approval for the surface commingling of production, please execute the signature block below and return one copy of this letter to my attention by e-mail, fax, or using the prepaid return envelope enclosed herewith. Should you have any questions, please don’t hesitate to contact me.

Sincerely,

**APACHE CORPORATION**



Laci Stretcher  
Landman  
laci.stretcher@apachecorp.com  
432-818-1846 (office)  
432-818-1197 (fax)

The undersigned hereby approves to surface commingle production, as proposed in this letter, subject to further approval by the New Mexico Oil Conservation Division.

---

Signature

---

Printed Name

---

Title

**SB State #1, #2, #4**

	Party Name	Addresses	Certified Mail No.
Royalty Interest	STATE OF NEW MEXICO	PO BOX 1148 Santa Fe NM 87504	7015 0640 0003 0223 9798
	ZPZ DELAWARE I LLC (OPERATOR)	2000 POST OAK BLVD, STE 100 HOUSTON, TX 77056	Not applicable
	COG OPERATING LLC	600 W Illinois Ave Midland, TX 79701	7015 0640 0003 0223 9804
Overriding Royalty	SPURCK FAMILY REVOCABLE TRUST UDT	22712 Erwin Street, Woodlands Hills, CA 91367	7015 0640 0003 0223 9811
	DAWN N STEAD SURVIVORS TRUST	22712 Erwin Street, Woodlands Hills, CA 91367	7015 0640 0003 0223 9828
	HARLAN STEAD ESTATE TRUST	3262 Avenida De Sueno Carlsbad, CA 92009	7015 0640 0003 0223 9835

**TDF State #1, #2**

Royalty Interest	STATE OF NEW MEXICO	PO BOX 1148 Santa Fe NM, 87504	7015 0640 0003 0223 9798
	ZPZ DELAWARE I LLC (OPERATOR)	2000 POST OAK BLVD, STE 100 HOUSTON, TX 77056	Not applicable
	COG OPERATING LLC	600 W Illinois Ave Midland, TX 79701	7015 0640 0003 0223 9804
Overriding Royalty	JANE ANN HUDSON DAVIS	6770 Wolf Creek CT Rio Rancho, NM 87124-5708	7015 0640 0003 0223 9842
	JOAN ANN HUDSON	660 Camino De Las Mares San Clemente, CA 92673	7015 0640 0003 0223 9859
	JONEL SUSAN GRASSO	11 Ocean Ridge Lagun Niguel, CA 92677	7016 0640 0003 0223 9866

**NMBP State #1**

Royalty Interest	STATE OF NEW MEXICO	PO BOX 1148 Santa Fe NM, 87504	7015 0640 0003 0223 9798
	ZPZ DELAWARE I LLC (OPERATOR)	2000 POST OAK BLVD, STE 100 HOUSTON, TX 77056	Not applicable
	COG OPERATING LLC	600 W Illinois Ave Midland, TX 79701	7015 0640 0003 0223 9804
Overriding Royalty	NOBLE ROYALTIES INC	PO Box 660082 Dallas, TX 75266-0082	7015 0640 0003 0223 9880
	NESTEGG ENERGY CORPORATION	2308 Sierra Vista RD Artesia, NM 88210	7015 0640 0003 0223 9873
	BILL GOLDSTON FAMILY TRUST	PO BOX 40909 Austin, TX 78704	7015 0640 0003 0223 9415

# Apache Corporation SB- State Battery

(CURRENTLY 2016)

Sec. 2, T18S, R27E

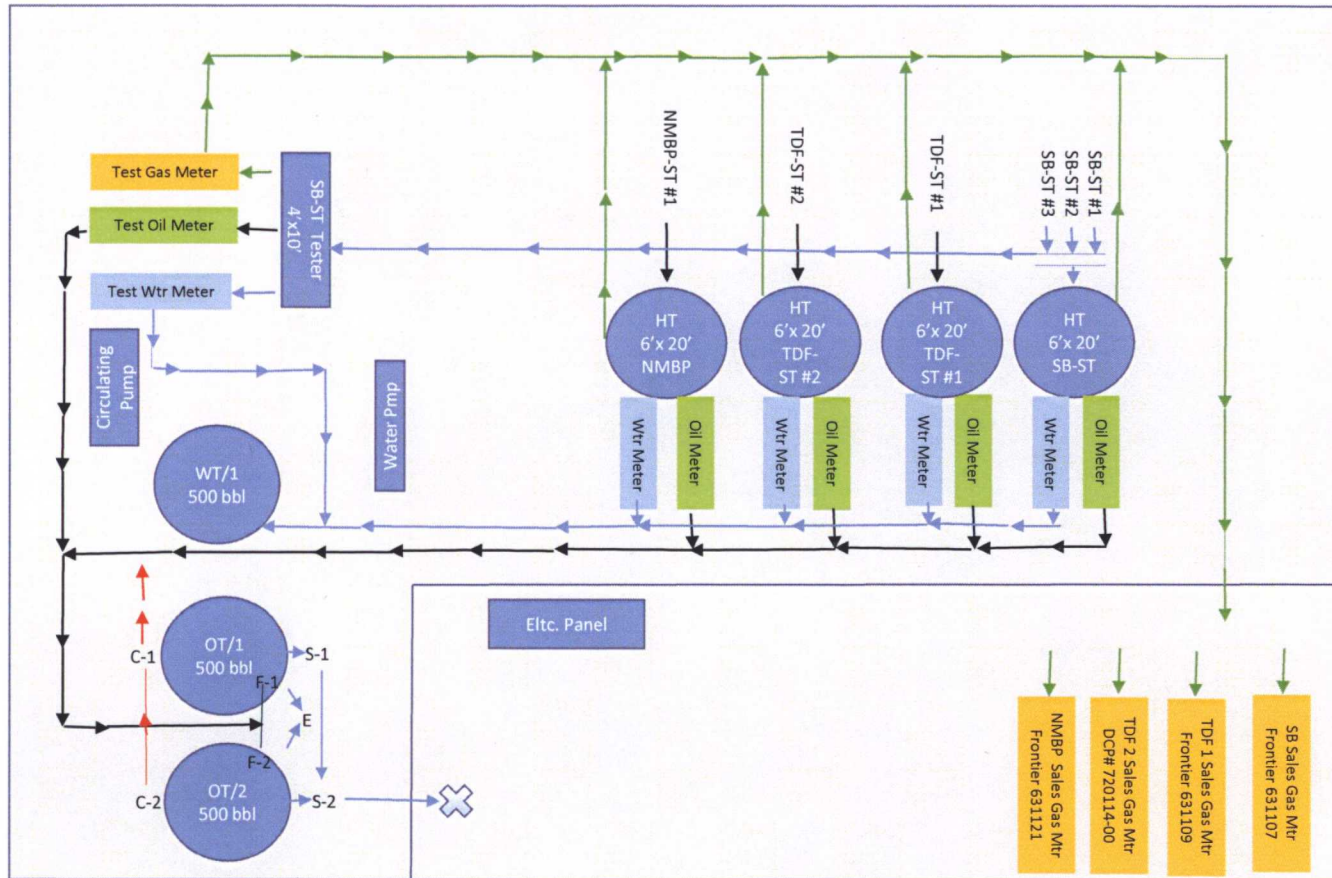
Lat. 32.778878, Long. -104.256988

Apache Corp.  
1945 Bluestem Rd.  
Artesia, NM 88210  
575-677-3642

Wells Going To Facility:

- SB-ST #1**  
API# 30-015-32218  
Sec. 2 – T18S – R27E  
Lease #B-7244, Unit E
- SB-ST #2**  
API# 30-015-42002  
Sec. 2 – T18S – R27E  
Lease #B-7244, Unit E
- SB-ST #4**  
API# 30-015-42003  
Sec. 2 – T18S – R27E  
Lease #B-7244, Unit E
- TDF- ST #1**  
API# 30-015-32231  
Sec. 2 – T18S – R27E  
Lease #B-7244, Unit F
- TDF- ST #2**  
API# 30-015-32900  
Sec. 2 – T18S – R27E  
Lease #B-7244, Unit F
- NMBP- ST #1**  
API# 30-015-33158  
Sec. 2 – T18S – R27E  
Lease #B-7244, Unit L

- S = Oil Sales Line Valve
- E = Equalizer Line Valve
- F = Fill Line Valve
- C = Circulating Line Valve



## Oil Tank Sealing Requirements

- A. Production Phase (OT/1)**
  - a. valve F-1 open
  - b. valve E open
  - c. valve S-1 sealed closed
  - d. valves on OT/2
    - i. valve F-2 closed
    - ii. valve C-2 sealed
    - iii. Valve S-2 sealed closed
- B. Sales Phase (OT/1)**
  - a. valve F-1, E, C-1 sealed closed
  - b. valve S-1 open to sales
  - c. valve OT-2
    - i. valve F-2 open
    - ii. valve C-2 sealed
    - iii. Valve S-2 sealed closed



# Apache Corporation SB- State Battery

(Proposed 2017)

Sec. 2, T18S, R27E

Lat. 32.778878, Long. -104.256988

Apache Corp.  
1945 Bluestem Rd.  
Artesia, NM 88210  
575-677-3642

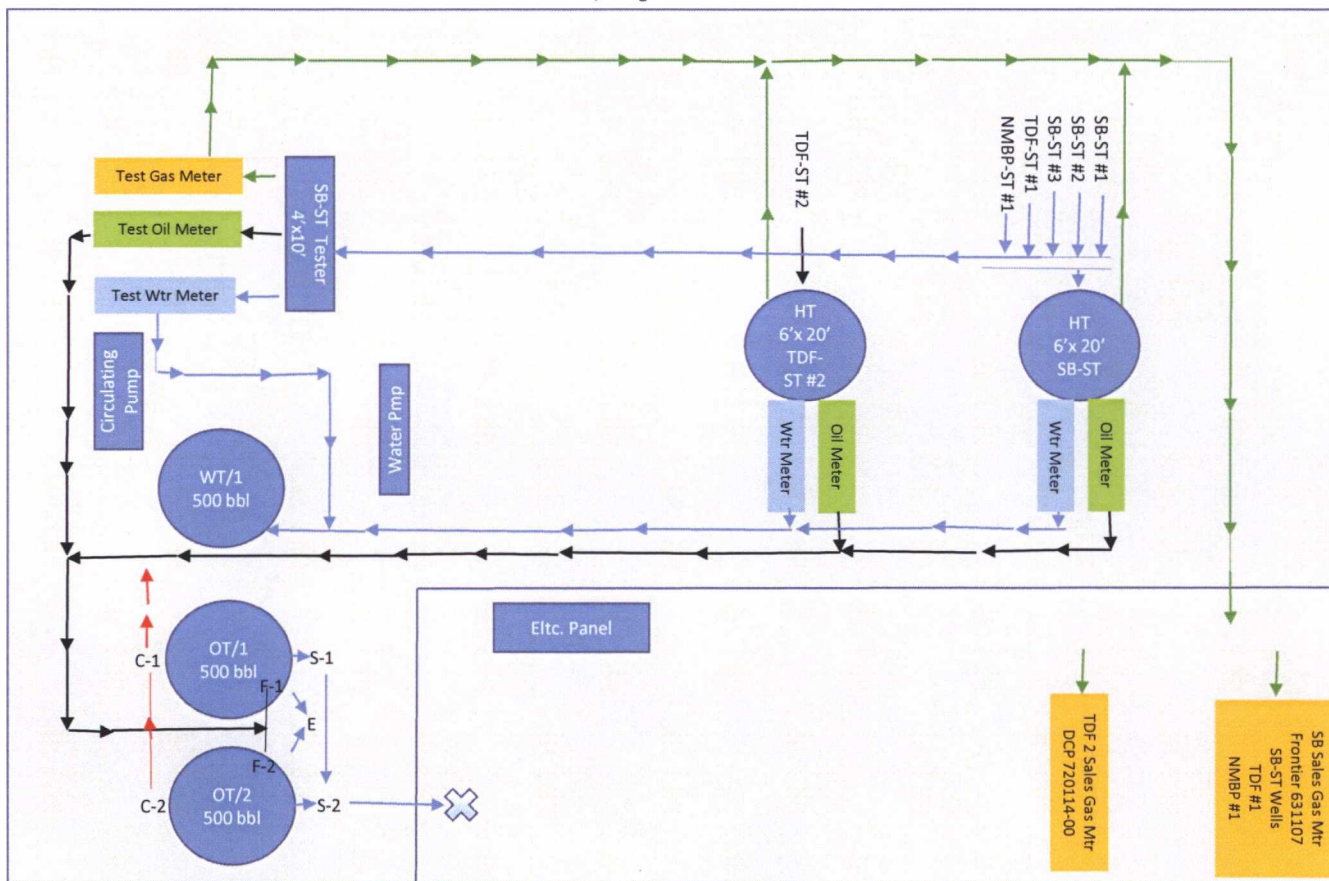
Wells Going To Facility:

- SB-ST #1**  
API# 30-015-32218  
Sec. 2 - T18S - R27E  
Lease #B-7244, Unit E
- SB-ST #2**  
API# 30-015-42002  
Sec. 2 - T18S - R27E  
Lease #B-7244, Unit E
- SB-ST #4**  
API# 30-015-42003  
Sec. 2 - T18S - R27E  
Lease #B-7244, Unit E
- TDF- ST #1**  
API# 30-015-32231  
Sec. 2 - T18S - R27E  
Lease #B-7244, Unit F
- TDF- ST #2**  
API# 30-015-32900  
Sec. 2 - T18S - R27E  
Lease #B-7244, Unit F
- NMBP- ST #1**  
API# 30-015-33158  
Sec. 2 - T18S - R27E  
Lease #B-7244, Unit L

S = Oil Sales Line Valve  
E = Equalizer Line Valve  
F = Fill Line Valve  
C = Circulating Line Valve

## Oil Tank Sealing Requirements

- A. Production Phase (OT/1)**
  - a. valve F-1 open
  - b. valve E open
  - c. valve S-1 sealed closed
  - d. valves on OT/2
    - i. valve F-2 closed
    - ii. valve C-2 sealed
    - iii. Valve S-2 sealed closed
- B. Sales Phase (OT/1)**
  - a. valve F-1, E, C-1 sealed closed
  - b. valve S-1 open to sales
  - c. valve OT-2
    - i. valve F-2 open
    - ii. valve C-2 sealed
    - iii. Valve S-2 sealed closed



## McMillan, Michael, EMNRD

---

**From:** Alonso, Isabel <Isabel.Alonso@apachecorp.com>  
**Sent:** Wednesday, February 8, 2017 12:04 PM  
**To:** McMillan, Michael, EMNRD; Podany, Raymond, EMNRD  
**Subject:** RE: SB State Well No.2 and SB State Well No. 4 Pool designation

This might help clear things up, please see below. Thank you –Isabel

**From:** Kautz, Paul, EMNRD [mailto:paul.kautz@state.nm.us]  
**Sent:** Tuesday, November 29, 2016 9:12 AM  
**To:** Hudson, Isabel <isabel.hudson@apachecorp.com>; McMillan, Michael, EMNRD <Michael.McMillan@state.nm.us>  
**Cc:** Fisher, Reesa <Reesa.Fisher@apachecorp.com>; Sharp, Karen, EMNRD <Karen.Sharp@state.nm.us>; Bayliss, Randolph, EMNRD <Randolph.Bayliss@state.nm.us>  
**Subject:** RE: Administrative Approval to Surface Commingle: SB State #2 , SB State #4

Hi Isabel,

Sorry for the delay getting back with you and Michael McMillan, but I have been out of the office. It is a physical impossibility for 30-015-42002 and 30-015-42003 for these two wells to be in either the [51120] RED LAKE;GLORIETA-YESO or the [96380] ARTESIA; GLORIETA-YESO (O) pools. Well 30-015-42002 was originally permitted for the [96836] RED LAKE; GLORIETA-YESO, NORTHEAST. The previous geologist for Artesia had problems with his eyesight and would pick the pool for the wrong township and range.

30-015-42002 in e-permitting shows the correct [96836] RED LAKE; GLORIETA-YESO, NORTHEAST.

Apache needs to submit amended C-102's for both wells showing [96836] RED LAKE; GLORIETA-YESO, NORTHEAST as the correct pool.

Paul Kautz  
Hobbs District Geologist  
NM Oil Conservation Div.  
1625 N French Dr.  
Hobbs, NM 88240  
575-393-6161 Ext. 104

**ISABEL ALONSO**  
direct 432-818-1142 | 6219C

\*Save the earth... It's the only planet with chocolate!

---

**From:** McMillan, Michael, EMNRD [mailto:Michael.McMillan@state.nm.us]  
**Sent:** Wednesday, February 08, 2017 12:57 PM  
**To:** Podany, Raymond, EMNRD <Raymond.Podany@state.nm.us>