

CITIES SERVICE COMPANY  
ENERGY RESOURCES GROUP



Box 1919  
Midland, Texas 79702  
(915) 685-5600

September 15, 1981

SEP 17 1981  
OIL CONSERVATION DIVISION  
SANTA FE

NS L-1445-  
~~R-3134-A~~  
Rule 104 F  
No off se  
immediate

Energy and Minerals Department  
Oil and Conservation Division  
P. O. Box 2088  
Santa Fe, New Mexico 87501

ATTENTION: Mr. Joe D. Ramey

RE: Request for Administrative  
Approval to Drill Southeast  
Maljamar Grayburg-San Andres  
Unit Tract 4 Well No. 13,  
Lea County, New Mexico

*Maljamar Pool*

Gentlemen:

Cities Service, as operator of the Southeast Maljamar Grayburg-San Andres Unit, a Secondary Recovery Project, respectfully requests administrative approval as authorized by case No. 4750, order No. R-3134-A, to drill on a non-standard location, Tract 4, Well No. 13, located 1485' FNL & 2400' FWL of Section 29-T17S-R33E, Lea County, New Mexico. The estimated total depth is 4450' and the proposed casing program is as follows:

Hole Size	Csg. Size	Weight/Ft.	Setting Depth	Cmt.	Est. top of Cement
12-1/4"	8-5/8"	32#	1300'	650 sx	circ.
7-7/8"	5-1/2"	15.5#	3900'	200 sx	2400'
4-5/8"	4" liner	9.5#	3700-4450'	75 sx	3750'

The SE/4 NW/4, 40 acres will be dedicated to this well.

Thank you for consideration of our request.

Very truly yours,

CITIES SERVICE COMPANY

*Elmer Startz*

Elmer Startz  
Region Operations Manager-Production  
Southwest Region  
E&P Division

ES:JME:lmcb

cc: Oil Conservation Division  
P. O. Box 1980  
Hobbs, New Mexico 88240



**NEW MEXICO OIL CONSERVATION COMMISSION  
WELL LOCATION AND ACREAGE DEDICATION PLAT**

Form C-102  
Supersedes C-128  
Effective 1-1-65

All distances must be from the outer boundaries of the Section.

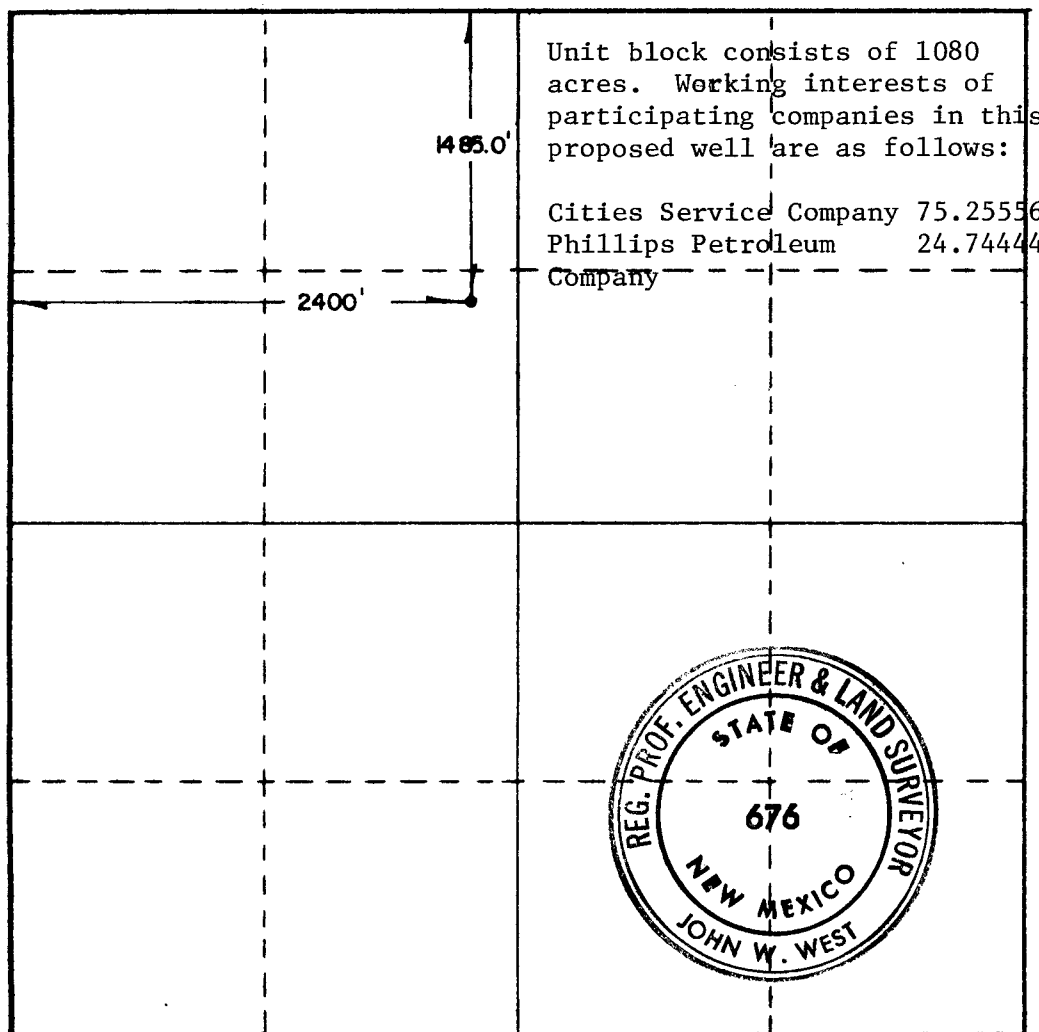
Operator <b>Cities Service Co.</b>			Lease <b>Tract 4</b>		Well No. <b>13</b>	
Unit Letter <b>G</b>	Section <b>29</b>	Township <b>17South</b>	Range <b>33East</b>	County <b>Lea</b>		
Actual Footage Location of Well: <b>1485</b> feet from the <b>North</b> line and <b>2400</b> feet from the <b>West</b> line						
Ground Level Elev. <b>4092.4' GR</b>	Producing Formation <b>Gzayburg-San Andres</b>		Pool <b>Maljamar (G-SA)</b>		Dedicated Acreage: <b>40</b> Acres	

1. Outline the acreage dedicated to the subject well by colored pencil or hatchure marks on the plat below.
2. If more than one lease is dedicated to the well, outline each and identify the ownership thereof (both as to working interest and royalty).
3. If more than one lease of different ownership is dedicated to the well, have the interests of all owners been consolidated by communitization, unitization, force-pooling, etc?

☒ Yes    ☐ No    If answer is "yes," type of consolidation UNITIZATION

If answer is "no," list the owners and tract descriptions which have actually been consolidated. (Use reverse side of this form if necessary.) \_\_\_\_\_

No allowable will be assigned to the well until all interests have been consolidated (by communitization, unitization, forced-pooling, or otherwise) or until a non-standard unit, eliminating such interests, has been approved by the Commission.



**CERTIFICATION**

I hereby certify that the information contained herein is true and complete to the best of my knowledge and belief.

Name Elmer Stutz  
 Position Region Opr. Mgr. - Prod.  
 Company Cities Service Company  
 Date September 15, 1981

I hereby certify that the well location shown on this plat was plotted from field notes of actual surveys made by me or under my supervision, and that the same is true and correct to the best of my knowledge and belief.

Date Surveyed Sept. 14, 1981  
 Registered Professional Engineer and/or Land Surveyor

John W. West  
 Certificate No. JOHN W. WEST 676  
PATRICK A. ROMERO 6863  
Ronald J. Eidsen 3239

0 320 640 960 1280 1600 1920 2240 2560 2880 3200 3520 3840 4160 4480 4800 5120 5440 5760 6080 6400

