



March 8, 1993

OIL CONSERVATION DIVISION
RECEIVED

'93 MAR 10 AM 8 50

Amoco Production Company

Southern Rockies Business Unit
Amoco Building
1670 Broadway
Post Office Box 800
Denver, Colorado 80201
303-830-4040

Mr. William J. LeMay, Director
New Mexico Oil Conservation Division
P. O. Box 2088
Santa Fe, New Mexico 87504

File: CAW-049-986.511

Application for Unorthodox Location and Dual Completion
Mudge Com B 2 E
SW/4 Section 14, T31N-R11W
Blanco Mesaverde Pool, Basin Dakota Pool
San Juan County, New Mexico

Amoco Production Company hereby requests administrative approval for an unorthodox location in the Blanco Mesaverde Pool. Amoco plans to recomplate the existing Dakota producer, Mudge Com B 2E well, as a dual well in the Blanco Mesaverde and Basin Dakota Pools. The existing Mesaverde well in this quarter section (Neil 5) was plugged and abandoned in November, 1992 due to downhole mechanical problems.

The Mudge Com B 2E was drilled in 1982 at an approved unorthodox location 1350' FSL and 685' FWL of Section 14, T31N-R11W as a Dakota producer. Administrative Order NSL-1509 approved the location due to topographic conditions in this area. Since the well does not conform to the Blanco Mesaverde location requirements, an approval of unorthodox location is required.

All offsetting operators will receive a copy of this application by certified mail with a request that they furnish your Santa Fe office with a waiver of objection and return one copy to Amoco.

Sincerely,

JWH
J. W. Hawkins
JWH/jmc

cc: Julie Acevedo
Paul Edwards

NMOCD District III
1000 Rio Brazos Rd.
Aztec, NM 87410

Meridian Oil Inc.
PO Box 4289
Farmington, NM 87499

WAIVER

_____ hereby waives objection to Amoco's application for unorthodox well location for the recompletion of the Mudge Com B 2E well in the Blanco Mesaverde Pool as proposed above.

By: _____ Date: _____



March 8, 1993

Mr. William J. LeMay, Director
New Mexico Oil Conservation Division
P. O. Box 2088
Santa Fe, New Mexico 87504

File: CAW-049-986.511

Application for Unorthodox Location and Dual Completion
Mudge Com B 2 E
SW/4 Section 14, T31N-R11W
Blanco Mesaverde Pool, Basin Dakota Pool
San Juan County, New Mexico

Amoco Production Company hereby requests administrative approval for an unorthodox location in the Blanco Mesaverde Pool. Amoco plans to recomplete the existing Dakota producer, Mudge Com B 2E well, as a dual well in the Blanco Mesaverde and Basin Dakota Pools. The existing Mesaverde well in this quarter section (Neil 5) was plugged and abandoned in November, 1992 due to downhole mechanical problems.

The Mudge Com B 2E was drilled in 1982 at an approved unorthodox location 1350' FSL and 685' FWL of Section 14, T31N-R11W as a Dakota producer. Administrative Order NSL-1509 approved the location due to topographic conditions in this area. Since the well does not conform to the Blanco Mesaverde location requirements, an approval of unorthodox location is required.

All offsetting operators will receive a copy of this application by certified mail with a request that they furnish your Santa Fe office with a waiver of objection and return one copy to Amoco.

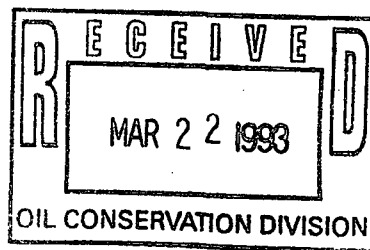
Sincerely,

J. W. Hawkins
J. W. Hawkins
JWH/jmc

cc: Julie Acevedo
Paul Edwards

NMOCD District III
1000 Rio Brazos Rd.
Aztec, NM 87410

Meridian Oil Inc.
PO Box 4289
Farmington, NM 87499



Southland Royalty Company WAIVER

Meridian Oil Inc hereby waives objection to Amoco's application for unorthodox well location for the recompletion of the Mudge Com B 2E well in the Blanco Mesaverde Pool as proposed above.

By:

John F. Zlot
John F. Zlot
Area Landman

Date:

3/6/93



John
Vern

Amoco Production Company

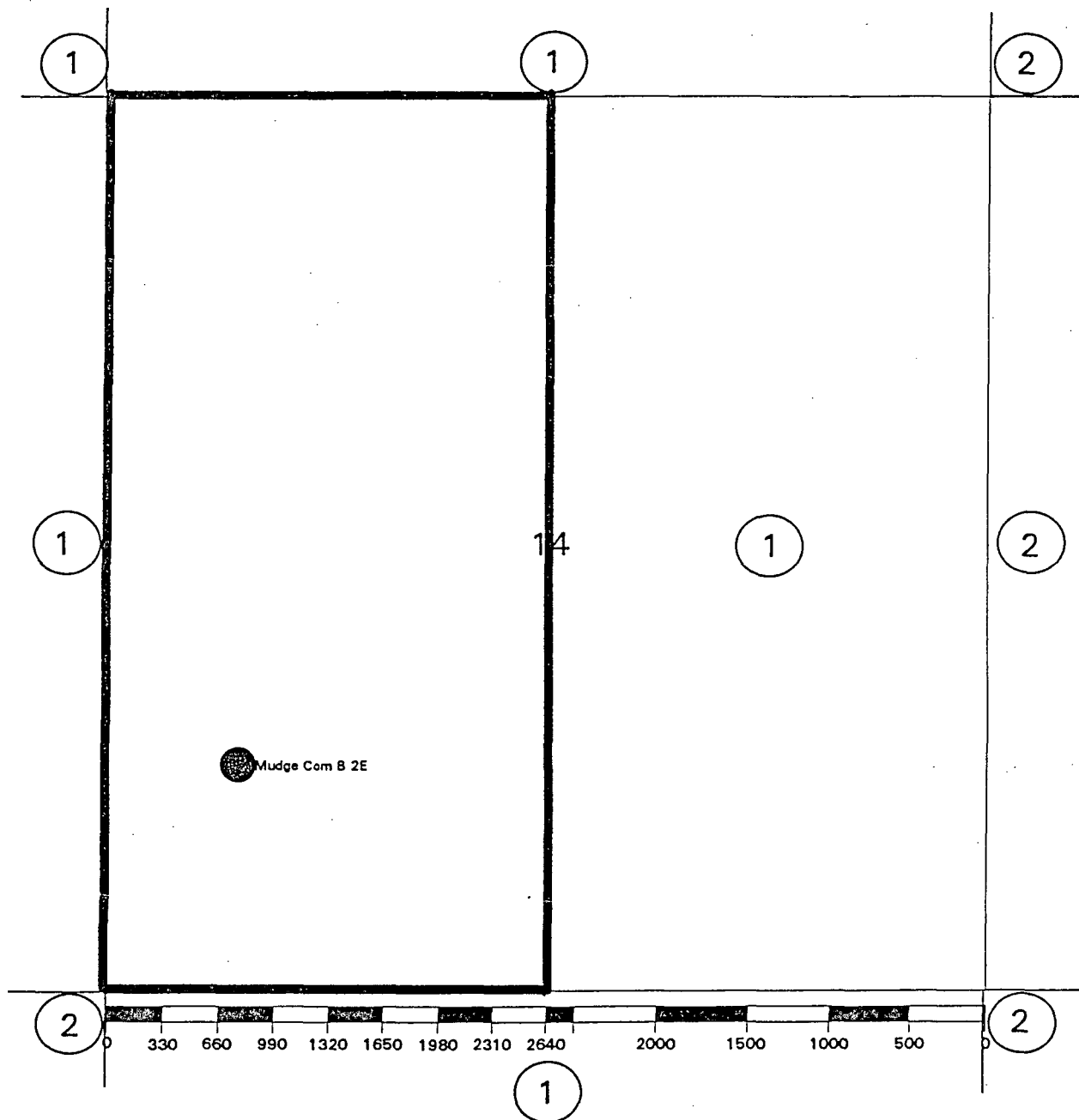
Offset Operator Plat

Mudge Com B 2E

Township 31North - Range 11West

1350' FSL, 685' FWL Sec. 14

Mesaverde Formation

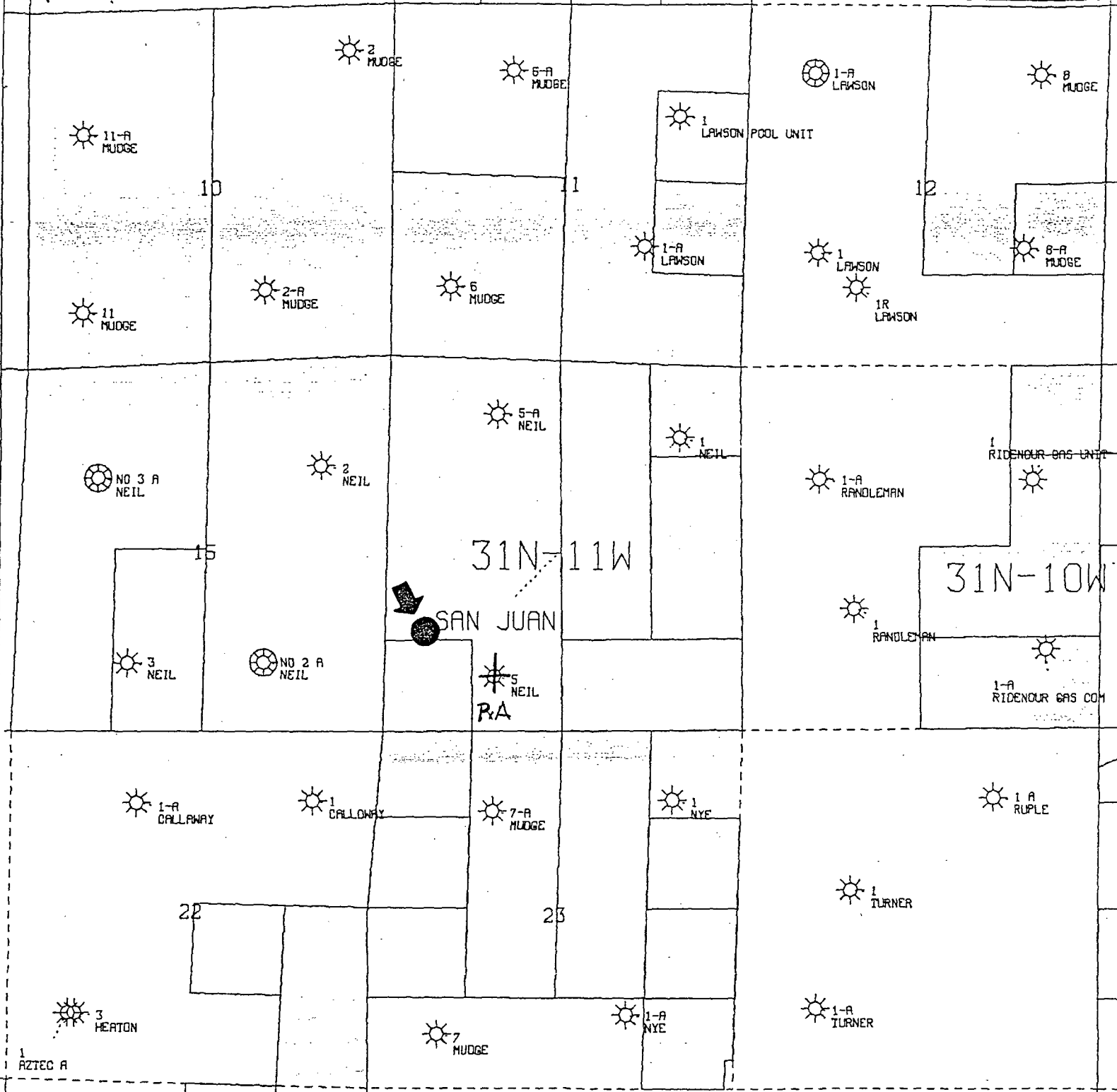


1 Amoco Production Company

2 Meridian Oil Prod., P.O. Box 4289, Farmington, NM 87499

13,410,311.77 FT. N
36° 55' 13" N

13,410,311.77 FT.
36° 55' 13"



36° 52' 35" N
13,394,302.98 FT. N

36° 52' 35" N
13,394,302.98 FT. N

AMOCO PRODUCTION COMPANY
PLAT MAP
MUDGE COM B 2E
SEC 14-T31N-R11W
SCALE 1 IN. = 2,000 FT. FEB 24, 1993

POLYCONIC CENTRAL MERIDIAN - 107° 57' 33" W LON
SPHEROID - 6

HORIZONTAL DATUM NAD27

	<p>Amoco Production Company Well LS 4411 No. 3A 800' ECL - 1580' ECL Spud: 10/19/78 Blanco-Mesa Verde w/2 dedication *</p>	<p>Amoco Production Company Well Com 4411 No. 2 905' ECL - 1630' ECL Spud: 11/17/81 Basin-Dakota Completion E/2 dedication *</p>	<p>Amoco Production Company Well "LS" 4411 No. 1 1050' ECL - 890' ECL Spud: 4/13/53 Blanco-Mesa Verde Completion.</p>
<p>→ *</p> <p>Amoco Production Company Mudse Com "B" 4411 No. 2 1660' ECL - 810' ECL Spud: 4/19/80 Basin Dakota Completion w/2 dedication</p>			
<p>*</p> <p>Amoco Production Company Mudse Com "B" 4411 No. 2E 1350' ECL - 685' ECL Spud: 5/28/82 Basin Dakota Completion w/2 dedication</p>	<p>Amoco Production Company Well LS 4411 No. 1A 1500' ECL Spud: 12/16/57 Blanco-Mesa Verde Comp. E/2 dedication *</p>		
<p>*</p> <p>Amoco Production Company Well LS 4411 No. 5 800' ECL - 1600' ECL Spud: 8/6/53 Blanco-Mesa Verde Comp. w/2 dedication</p>	<p>→</p> <p>Well 4411 No. 5 Spud: 8/6/53 Blanco-Mesa Verde in 1952</p>	<p>*</p>	<p>Amoco Production Company Well Com well No. 2-E 850' ECL - 1730' ECL Spud: 4/19/84 Basin Dakota Comp. E/2 dedication</p>

SECTION 14

TOWNSHIP 31 North

RANGE

11 West



STATE OF NEW MEXICO
ENERGY, MINERALS and NATURAL RESOURCES DEPARTMENT
OIL CONSERVATION DIVISION
AZTEC DISTRICT OFFICE

RECEIVED
93 MAR 17 AM 1 07
1000 RIO BRAZOS ROAD
AZTEC, NEW MEXICO 87410
(505) 334-6178

Date: 3-16-93

Attn: Mike Stogner

Oil Conservation Division
P.O. Box 2088
Santa Fe, NM 87504-2088

RE: Proposed MC
Proposed NSL X
Proposed WFX
Proposed NSP

Proposed DIIC
Proposed SWD
Proposed PMX
Proposed DD

Gentlemen:

I have examined the application received on 3-11-93
for the AMDCO OPERATOR MURGE COMB #2E
LEASE & WELL NO.

L-14-31N-11W and my recommendations are as follows:
UL-S-T-R

Approve - MC Requires a C-102 application

Yours truly,

Gene Bunk