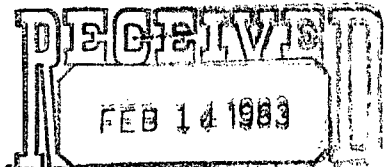




# Capital Oil and Gas Corporation



CONSERVATION DIVISION  
SANTA FE

214 - 983-2081

February 9, 1983

214 - 983-2082

Mr. Joe Ramey  
Energy and Minerals Department  
Oil Conservation Commission  
P. O. Box 2088  
Santa Fe, New Mexico 87501

*NS - 11663  
Paragraph 6 Order R-4875  
No offsets Immediate  
See Form C-102 for  
location*

Re: Commission Order R-4875

Dear Mr. Ramey:

Enclosed is information needed for request of administrative approval for a nonstandard location for our SFPRR No. 81. The information enclosed is in compliance with the Operating Rules for the Waterflood Project, Miguel Creek Field, Gallup Pool, in McKinley County, New Mexico, Case No. 5321. As requested in Paragraph 6 of the Commission Order No. R-4875, we seek approval for a nonstandard location for SFPRR No. 81.

- A. A plat marked "Exhibit A" is enclosed, showing new location and the particle of acreage dedicated to this well.
- B. Enclosure marked "Exhibit B" is an aerial map of the location and offset wells. At the present time, there are no offset producers except for Capital Oil and Gas Corporation in the area.
- C. "Exhibit C" is a downhole schematic of the well.
- D. A nonstandard location is needed to monitor water breakthrough in a pilot waterflood area.
- E. To our knowledge, there are no water, oil and gas strata zones of the Gallup Hospah pay zone in this area.

This information should be satisfactory with the rules set forth in the Commission Order R-4875. If you need further information, please do not hesitate to contact me.

Yours very truly,

CAPITAL OIL AND GAS CORPORATION

By Gary Blanks  
Gary Blanks, Vice President

GB:jh

Enclosure

Post Office Box 2130 Suite 202, Pioneer Building Kilgore, Texas 75662

EXHIBIT A

All distances must be from the outer boundaries of the Section.

FEB 14 1983

Operator Capital Oil and Gas Corporation			Lease S.F.P.R.R.		Well No. 81
Unit Letter K	Section 21	Township 16N	Range 6W	County SANTA FE McKinley	
Actual Footage Location of Well: 1340 feet from the South line and 1340 feet from the West line					
Ground Level Elev. 6394'	Producing Formation Hospah-Gallup		Pool Miguel Creek Gallup		Dedicated Acreage: 40 Acres

1. Outline the acreage dedicated to the subject well by colored pencil or hatchure marks on the plat below.
2. If more than one lease is dedicated to the well, outline each and identify the ownership thereof (both as to working interest and royalty).
3. If more than one lease of different ownership is dedicated to the well, have the interests of all owners been consolidated by communitization, unitization, force-pooling, etc?

☐ Yes ☐ No If answer is "yes," type of consolidation \_\_\_\_\_

If answer is "no," list the owners and tract descriptions which have actually been consolidated. (Use reverse side of this form if necessary.) \_\_\_\_\_

No allowable will be assigned to the well until all interests have been consolidated (by communitization, unitization, forced-pooling, or otherwise) or until a non-standard unit, eliminating such interests, has been approved by the Division.

CERTIFICATION

I hereby certify that the information contained herein is true and complete to the best of my knowledge and belief.

*Dary Blanks*  
Name Gary Blanks

Vice President  
Position

Capital Oil and Gas Corporation  
Company

1/15/83  
Date

I hereby certify that the well location shown on this plat was plotted from field notes of actual surveys made by me or under my supervision, and that the same is true and correct to the best of my knowledge and belief.

3/12/82

Date Surveyed

Fred D. Marman

Registered Professional Engineer  
and/or Land Surveyor

2031

Certificate No.

0 330 660 990 1320 1650 1980 2310 2640 2970 3300 3630 3960 4290 4620 4950 5280 5610 5940 6270 6600

OPERATOR

LEASE

81 1340' FSL &amp; 1340' FWL

21

16N

6W

WELL NO.

FOOTAGE LOCATION

SECTION

TOWNSHIP

RANGE

## EXHIBIT C

## Schematic

## Tabular Data

TOC  
Surf

## Surface Casing

Size 8-5/8" Cemented with 30 sx.

TOC Surf feet determined by visual

Hole size 12-1/4

## Intermediate Casing

Size " Cemented with sx.

TOC feet determined by

Hole size

## Long string

Size 4-1/2" Cemented with 85 sx.

TOC feet determined by Cal

Hole size 7-7/8"

Total depth 826'

## Injection interval

796 feet to 801 4 JSPF feet  
(perforated or open-hole, indicate which)

12-1/4" Hole

Bt of 8-5/8" 81'

7-7/8" hole

370' TOC

4-1/2" csg

2-3/8" tubing

3/4" rods

1-1/2" D H Pump

S.N.

Bot 760'

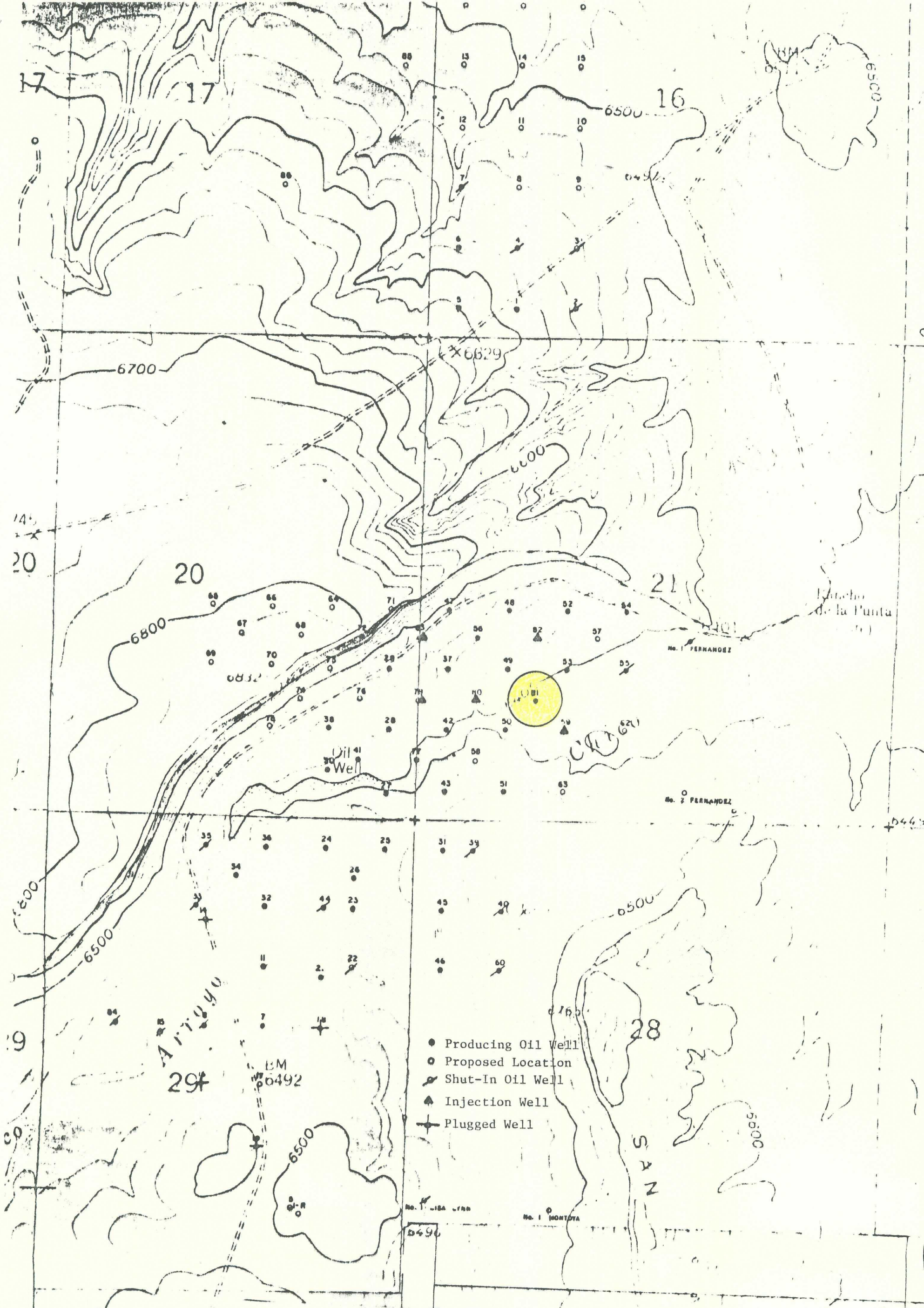
TD 826'

Tubing size 2-3/8" lined with J-55 not lined set in a  
(material)No packer packer at 760 feet  
(brand and model)

(or describe any other casing-tubing seal).

## Other Data

1. Name of the ~~injection~~ <sup>producing</sup> formation Hospah-Gallup
2. Name of Field or Pool (if applicable) Miguel Creek Gallup
3. Is this a new well drilled for injection? ☐ Yes ☒ No  
If no, for what purpose was the well originally drilled? Production well
4. Has the well ever been perforated in any other zone(s)? List all such perforated intervals and give plugging detail (sacks of cement or bridge plug(s) used) No
5. Give the depth to and name of any overlying and/or underlying oil or gas zones (pools) in this area. No other production in this area.



CAPITAL OIL & GAS CORPORATION  
 MIGUEL CREEK AREA  
 S.F.P.R.R. LEASE  
 TOWNSHIP 16-N, RANGE 6W

EXHIBIT B