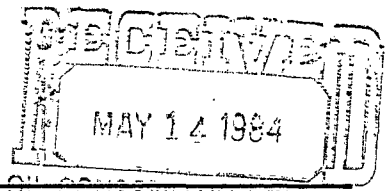


VERBAL GIVEN 5/14/84

dugan production corp.



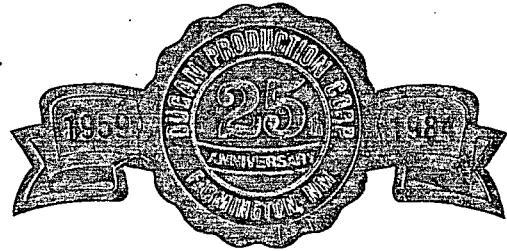
SANTA FE

March 15, 1984

NSL - 1820

RULE 104 FI

RELEASE IMMEDIATELY



Frank Chavez
New Mexico Oil Conservation Division
1000 Rio Brazos Rd.
Aztec, NM 87410

RE: Application for Administrative Approval of
Unorthodox Location for Pioneer Production Corp.
Maxey Gas Com "C" #1, 1700' FNL & 670' FEL, Sec. 24, T29N, R12W, NMPM
San Juan County, NM - Chacra Test

Dear Mr. Chavez:

FEDERAL LEASE

We hereby request approval of an unorthodox location for the subject well.
Copies of the well location plat, topographic map, and a production map
showing offsetting operators are attached for your reference.

The unorthodox location is necessary due to topographic conditions.

A copy of this application is being submitted to all offsetting operators by
certified mail with a request that they furnish your office with a waiver of
objection.

We request your approval of this location under the provisions of NMOC Rule
104-F.

Sincerely,

Sherman E. Dugan

Sherman E. Dugan
Agent

fp
cc: BLM, Farmington
Southland Royalty Co., Denver
Pioneer Production Corp.

RECEIVED

MAR 19 1984

OIL CON. DIV.
DIST. 3

WAIVER

Southland Royalty Co. hereby waives objection to the above application for
unorthodox location.

DATE

BY:

OIL CONSERVATION DIVISION

STATE OF NEW MEXICO
ENERGY AND MINERALS DEPARTMENTP. O. BOX 2088
SANTA FE, NEW MEXICO 87501Form C-102
Revised 10-1-78

All distances must be from the outer boundaries of the Section.

Operator Pioneer Production Corporation		Lease Maxey Gas Com C		Well No. 1	
Init Letter H	Section 24	Township 29 North	Range 12 West	County San Juan	
Actual Footage Location of Well:					
1700		feet from the North		line and 670	
feet from the East		line			
Ground Level Elev. 5682	Producing Formation Chacra		Pool Otero Chacra		Dedicated Acreage: 160 Acres

1. Outline the acreage dedicated to the subject well by colored pencil or hatchure marks on the plat below.
2. If more than one lease is dedicated to the well, outline each and identify the ownership thereof (both as to working interest and royalty).
3. If more than one lease of different ownership is dedicated to the well, have the interests of all owners been consolidated by communitization, unitization, force-pooling, etc?

☐ Yes ☐ No If answer is "yes," type of consolidation _____

If answer is "no," list the owners and tract descriptions which have actually been consolidated. (Use reverse side of this form if necessary.) _____

No allowable will be assigned to the well until all interests have been consolidated (by communitization, unitization, forced-pooling, or otherwise) or until a non-standard unit, eliminating such interests, has been approved by the Division.

CERTIFICATION

I hereby certify that the information contained herein is true and complete to the best of my knowledge and belief.

Sherman E. Dugan
Name
Sherman E. Dugan

Position
Geologist

Company
Dugan Production Corp.

Date
3-8-84

I hereby certify that the information shown on this plat was plotted from field notes of actual survey made by me or under my supervision and that the same is true and correct to the best of my knowledge and belief.

EDGAR L. RISENHOVER
REGISTERED LAND SURVEYOR
NEW MEXICO
5979

Date Surveyed
February 24, 1984

Registered Professional Engineer
and/or Land Surveyor

Edgar L. Risenhoover
Certificate No. 5979

Edgar L. Risenhoover

PIONEER PROD.

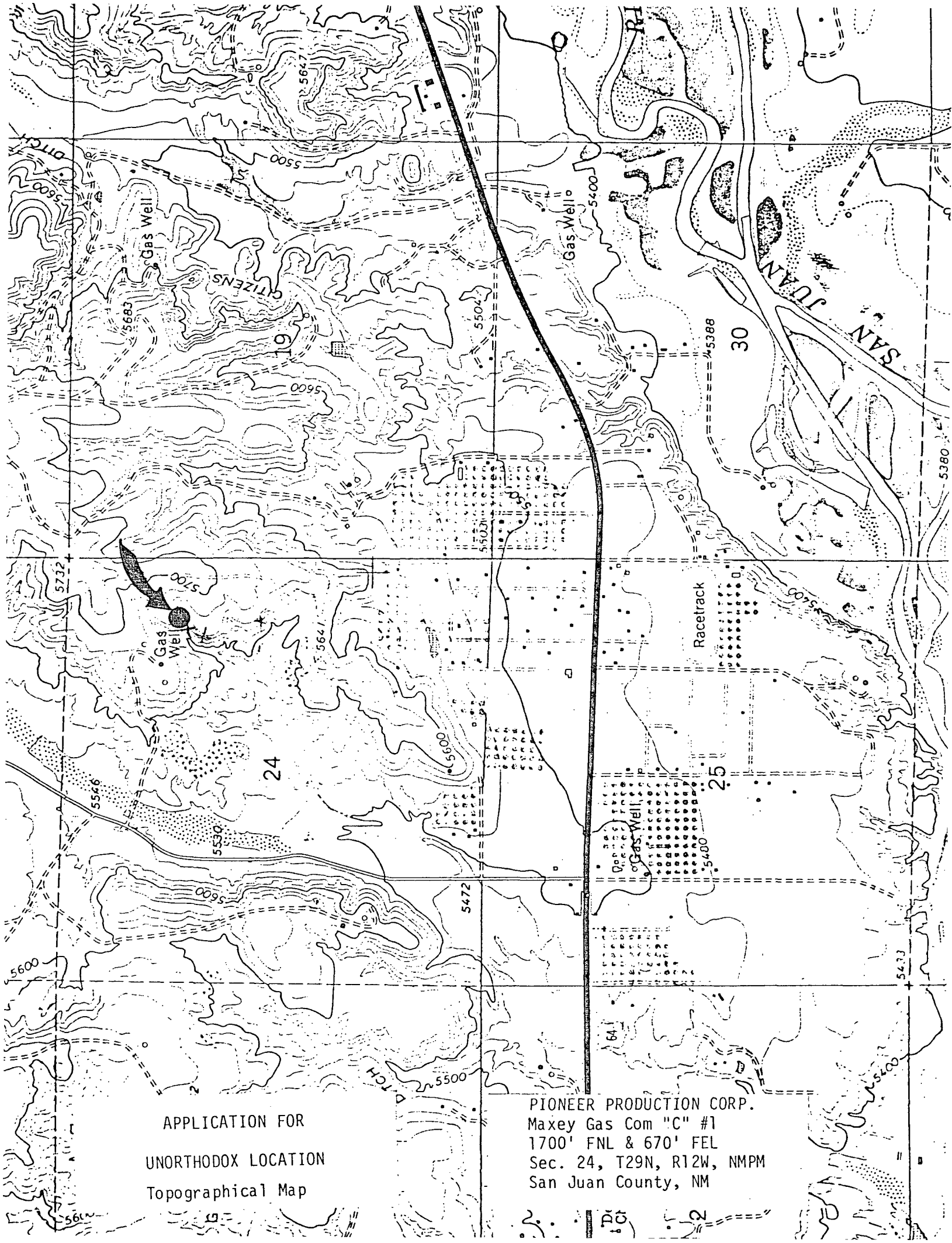
NM-013885

SEC. 24

RECEIVED

MAR 19 1984

OIL CON. DIV.
DIST. 3



APPLICATION FOR
UNORTHODOX LOCATION
Topographical Map

PIONEER PRODUCTION CORP.
Maxey Gas Com "C" #1
1700' FNL & 670' FEL
Sec. 24, T29N, R12W, NMPM
San Juan County, NM

<p>13</p>	<p>18</p>
<p>Southland Royalty Co. - S/2 SF-075587</p> <p>⊗ GD</p>	<p>Southland Royalty Co. - S/2 SF-077056</p>
<p>#1E ☀</p> <p>Maxey</p> <p>☀ #1</p> <p>Proposed Maxey Gas Com "C" #1</p> <p>Pioneer Production Corp. - N/2 NM-048573</p> <p>24</p>	<p>⊗ GD</p> <p>Southland Royalty Co</p> <p>19</p>
<p>☀</p>	<p>#1 ☀ D</p> <p>Cozzens</p>

APPLICATION FOR
UNORTHODOX LOCATION
OFFSETTING OPERATORS

PIONEER PRODUCTION CORP.
Maxey Gas Com "C" #1
1700' FNL & 670' FEL
Sec. 24, T29N, R12W, NMPPM
San Juan County, NM



STATE OF NEW MEXICO
ENERGY AND MINERALS DEPARTMENT

OIL CONSERVATION DIVISION
AZTEC DISTRICT OFFICE

1000 RIO BRAZOS ROAD
AZTEC, NEW MEXICO 87410
(505) 334-6178

OIL CONSERVATION DIVISION
BOX 2088
SANTA FE, NEW MEXICO 87501

DATE 4-5-84

RE: Proposed MC _____
Proposed DHC _____
Proposed NSL 7 _____
Proposed SWD _____
Proposed WFX _____
Proposed PMX _____

Gentlemen:

I have examined the application dated 4-15-84
for the Pioneer Production Co. Maxey Gas Com "C" #1 H-24-29N-12W
Operator Lease and Well No. Unit, S-T-R

and my recommendations are as follows:

approve

Yours truly,

Eric Busch