

order date 8/17/84



Getty Oil Company | P.O. Box 730, Hobbs, New Mexico 88240

(505) 397-3571

Central Exploration and Production Division

August 7, 1984

New Mexico Oil Conservation Division
State Land Office Building
P.O. Box 2088
Santa Fe, New Mexico 87501

Gentlemen:

In accordance with rule 104-F of the State of New Mexico rules and regulations, Getty Oil Company seeks administrative approval for unorthodox locations for the following wells:

RULE 104FI

RELEASE SEPTEMBER 3, 1984

FREN SEVEN RIVERS AND
GRAYBURG JACKSON QUEEN
SAN ANDRES POOLS

NSL-1876-	- - - Skelly Unit #149	2610 FSL & 150 FEL	Section 21	(NW/4 SE/4 dedicated)
NSL-1877-	- - - Skelly Unit #156	2560 FSL & 2630 FEL	Section 22	
NSL-1878-	- - - Skelly Unit #157	2600 FNL & 1310 FEL	Section 22	
NSL-1879-	- - - Skelly Unit #158	1310 FSL & 1310 FEL	Section 22	
NSL-1879-	- - - Skelly Unit #159	1310 FSL & 2630 FWL	Section 22	
NSL-1880-	- - - Skelly Unit #160	1270 FSL & 1310 FWL	Section 22	
NSC-1381-	All in T-17S, R-31E, of Eddy County, New Mexico			

Offset operators have been notified by certified mail as per the attached letter. Locations of these wells are necessary to study the success of infill drilling and the prospects for future infill drilling.

The proposed wells will be downhole commingled in the Fren Seven Rivers and Grayburg Jackson Queen San Andres reservoirs. A hearing is scheduled for August 22, 1984 with the NMOCD in Santa Fe, New Mexico to seek approval for downhole commingling.

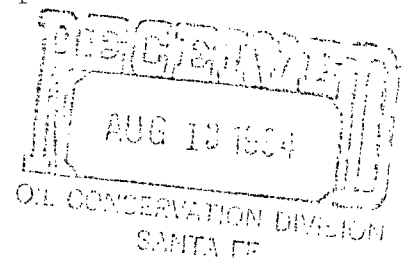
We propose to drill these wells as soon as possible. Your cooperation to expedite this request is appreciated. It is therefore requested that approval be granted for these unorthodox locations.

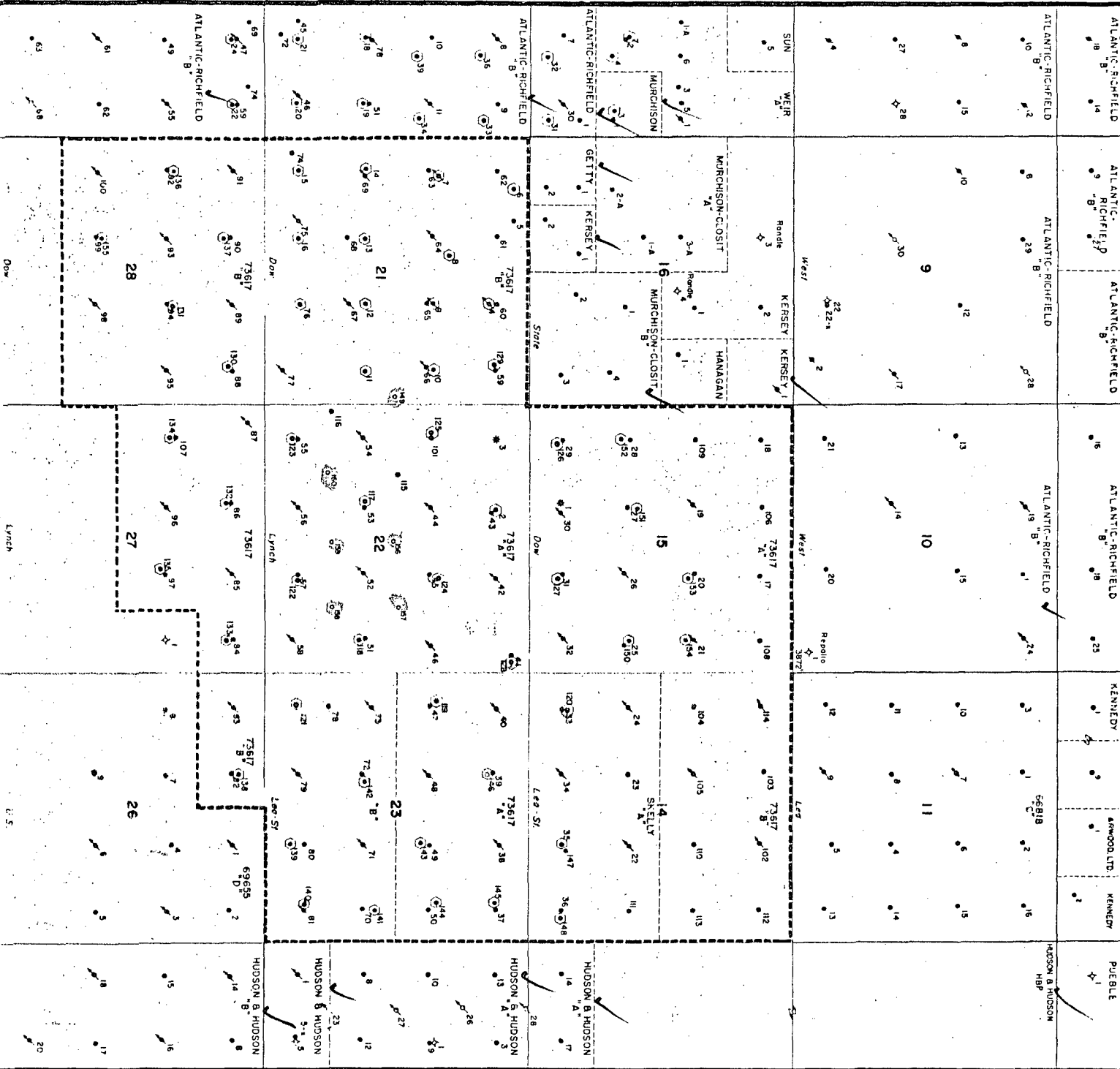
Yours truly,

Donald J. Stearns

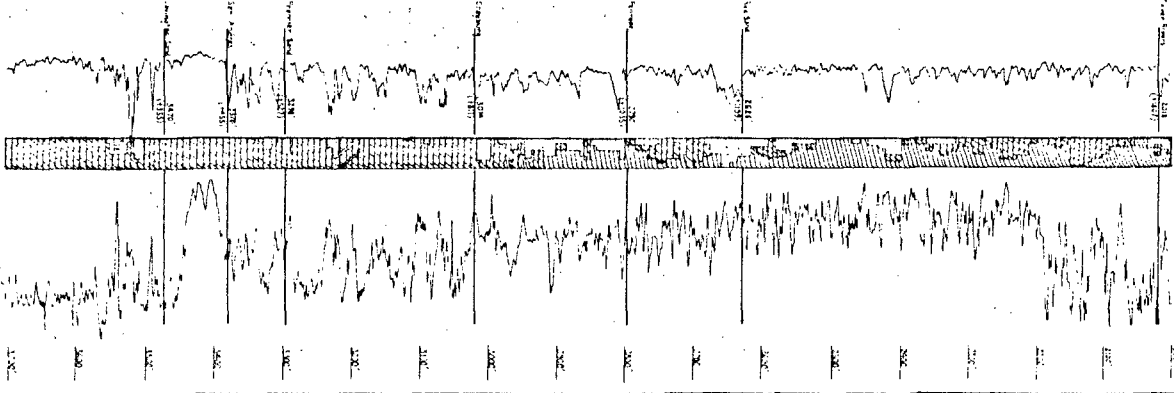
for Dale R. Crockett
Area Superintendent

Att. : Lease plat
Letters to offset operators

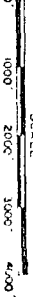




INTERPRETING SHEET
 SHOWS OILS & GAS SHOWING, GAS
 SHOWING, & WATER SHOWING
 (SEE EXPLANATION OF SYMBOLS ON
 SHEET R-31E)



GETTY OIL COMPANY
 MIDLAND E&P DISTRICT
 SKELLY UNIT AREA
 EDDY COUNTY, NEW MEXICO
 SCALE



06-NMOCD-Artesia
 1-NMOCD-Santa Fe
 1-Engr PWS
 1-Foreman
 1-H.O. Woods-Midland
 1-File

NEW MEXICO OIL CONSERVATION COMMISSION
 WELL LOCATION AND ACREAGE DEDICATION PLAT

Form C-102
 Supersedes C-128
 Effective 1-1-65

All distances must be from the outer boundaries of the Section.

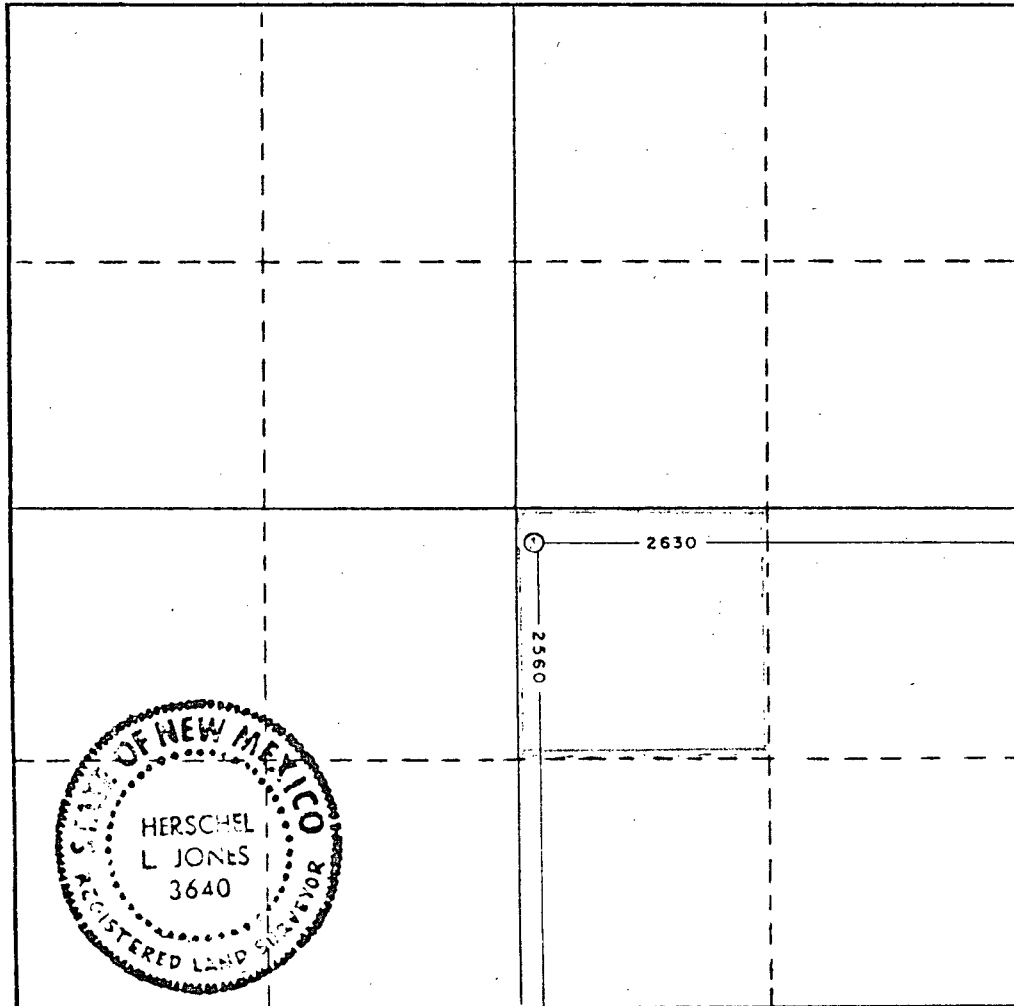
Operator GETTY OIL COMPANY		Lease SKELLY UNIT		Well No. 156
Unit Letter "J"	Section 22	Township 17 South	Range 31 East	County Eddy County,
Actual Footage Location of Well: 2560' feet from the South line and 2630 feet from the East line				
Ground Level Elev. 3845.6	Producing Formation 7-Rivers, Grayburg	Pool Fren 7-Rivers & Grayburg Jackson	Dedicated Acreage: 40 Acres	

1. Outline the acreage dedicated to the subject well by colored pencil or hachure marks on the plat below.
2. If more than one lease is dedicated to the well, outline each and identify the ownership thereof (both as to working interest and royalty).
3. If more than one lease of different ownership is dedicated to the well, have the interests of all owners been consolidated by communitization, unitization, force-pooling, etc?

Yes No If answer is "yes," type of consolidation _____

If answer is "no," list the owners and tract descriptions which have actually been consolidated. (Use reverse side of this form if necessary.) _____

No allowable will be assigned to the well until all interests have been consolidated (by communitization, unitization, forced-pooling, or otherwise) or until a non-standard unit, eliminating such interests, has been approved by the Commission.



CERTIFICATION

I hereby certify that the information contained herein is true and complete to the best of my knowledge and belief.

Dale R. Crockett

Name
Area Superintendent

Position
Getty Oil Company

Company
August 10, 1984

Days
Donald J. Stearns

I hereby certify that the well location shown on this plat was plotted from field notes of actual surveys made by me or under my supervision, and that the same is true and correct to the best of my knowledge and belief.

Date Surveyed
July 27, 1984

Registered Professional Engineer and/or Land Surveyor

Herschel L. Jones
Certificate No.

3540