



**Chevron U.S.A. Inc.** OIL DIVISION  
P.O. Box 670, Hobbs, NM 88240

'90 JUL 13 AM 9 08

July 6, 1990

R. C. Anderson  
Division Manager  
Production Department  
Hobbs Division

ADMINISTRATIVE APPLICATION FOR  
UNORTHODOX GAS WELL LOCATION  
AND SIMULTANEOUS DEDICATION  
EUMONT (PRO GAS) POOL  
660' FNL AND 660' FWL  
SECTION 36, T-21S, R-36E, NMPM  
LEA COUNTY, NEW MEXICO

---

State of New Mexico  
Energy, Minerals & Natural Resources Dept.  
Oil Conservation Division  
P. O. Box 2088  
Santa Fe, New Mexico

Attention: Mr. William J. LeMay - Director

Gentlemen:

Chevron U.S.A. Inc. respectfully requests your approval of our administrative application for an unorthodox gas well location in the Eumont (Pro Gas) Pool. We are also requesting your approval to simultaneously dedicate this 320-acre proration unit to our Harry Leonard (NCT-C) Wells No. 4, 7, 8 and 9 located in letter units D, G, H and B of Section 36, respectively.

Chevron plans to recomplete the Harry Leonard (NCT-C) # 4 within the Eumont Gas Pool as a gas well. The current location, as described above, is unorthodox in that it is less than 990' from one outer boundary of the proration unit.

Chevron therefore, respectfully requests your approval of this administrative application under the provisions of Rule 104 (F). Attached is a map showing offset operators and a Form C-102. A copy of this letter and attachments are being furnished to the Offset Operators by Certified Mail, as notice of this application.

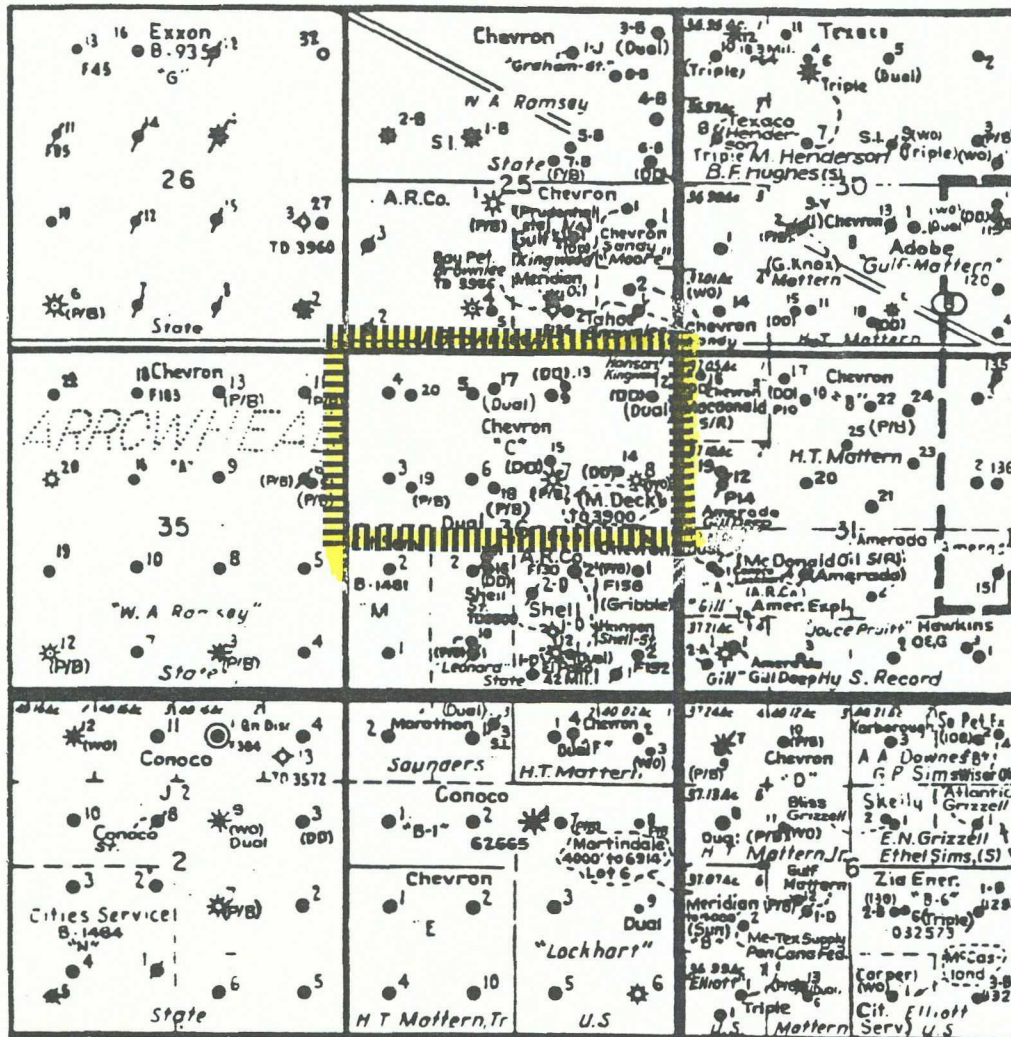
Yours very truly,

R. C. Anderson

JMT/jmt  
Attachments  
Enclosures

cc: NMOCD - Hobbs

Application For An Unorthodox  
Gas Well Location  
and  
Sumultaneous Dedication of Acreage  
Eumont (Pro Gas) Pool  
660' FNL and 660' FWL  
Section 36, T21S, R36E  
Lea County, New Mexico



CHEVRON U.S.A. INC.  
Harry Leonard (NCT-C) Lease

Application For An Unorthodox  
Gas Well Location  
and  
Sumultaneous Dedication of Acreage  
Eumont (Pro Gas) Pool  
660' FNL and 660' FWL  
Section 36, T21S, R36E  
Lea County, New Mexico

---

OFFSET OPERATORS

---

Amerada Hess Corporation  
P.O. Box 2040  
Tulsa Ok, 74012

American Exploration Co.  
2100 RepublicBank Center  
700 Louisiana  
Houston, Tx 77080

Arco Oil and Gas Company  
P.O. Box 1610  
Midland, Tx 79702

Exxon Company U.S.A.  
P.O. Box 1600  
Attn: R.D. Goddard  
Midland, Tx 79702-1600

Hanson Operating Company, Inc.  
P.O. Box 1515  
400 N. Pennsylvania Suite 1200  
Roswell, NM 88201

Jack Markham  
(Wellborn & Markham)  
1500 Broadway Suite 1212  
Lubbock, Tx 79401

Meridian Oil Inc.  
21 Desta Drive  
Midland, Tx 79701

Oxy USA, Inc.  
P.O. Box 50250  
Midland, Tx 79710

Tahoe Energy Inc.  
3909 W. Industrial  
Midland, Tx 79703

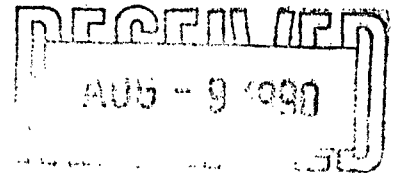


Chevron U.S.A. Inc. DIVISION  
O.P.O. Box 670, Hobbs NM 88240  
RECEIVED

R. C. Anderson  
Division Manager  
Production Department  
Hobbs Division

'90 AUG 22 AM 9 45

July 6, 1990



WAIVER REQUEST  
ADMINISTRATIVE APPLICATION FOR  
UNORTHODOX GAS WELL LOCATION  
AND SIMULTANEOUS DEDICATION  
EUMONT (PRO GAS) POOL  
660' FNL AND 660' FWL  
SECTION 36, T-21S, R-36E, NMPM  
LEA COUNTY, NEW MEXICO

American Exploration Co.  
2100 Republic Bank Center  
700 Louisiana  
Midland, Tx 79702-1600

Gentlemen:

Attached is a copy of Chevron's administrative application for application for NMOCD approval of an Unorthodox Gas Well Location and Simultaneous Dedication in the Eumont (Pro Gas) Pool. The subject well's location of 660' FNL and 660' FWL, Section 36, T-21-S, R-36-E, is unorthodox in that it is less than 990' from one outer boundary of the proration unit. We are also making application to simultaneously dedicate this 320 acre proration unit to our Harry Leonard Wells No. 4, 7, 8 and 9 located in unit letters D, G, H and B respectively, of Section 36.

As an offset operator, if you do not have any objections to the attached application, please sign the enclosed waivers and mail the original and two copies to the NMOCD in Santa Fe and one copy to the NMOCD in Hobbs. We would also request that you send a copy to Chevron U.S.A. Inc. in Hobbs. We have enclosed self addressed, stamped envelopes for your convenience.

If you have any questions, please contact Mr. A. W. Bohling at (505) 393-4121. Your prompt consideration in the above matter is appreciated.

Yours very truly,

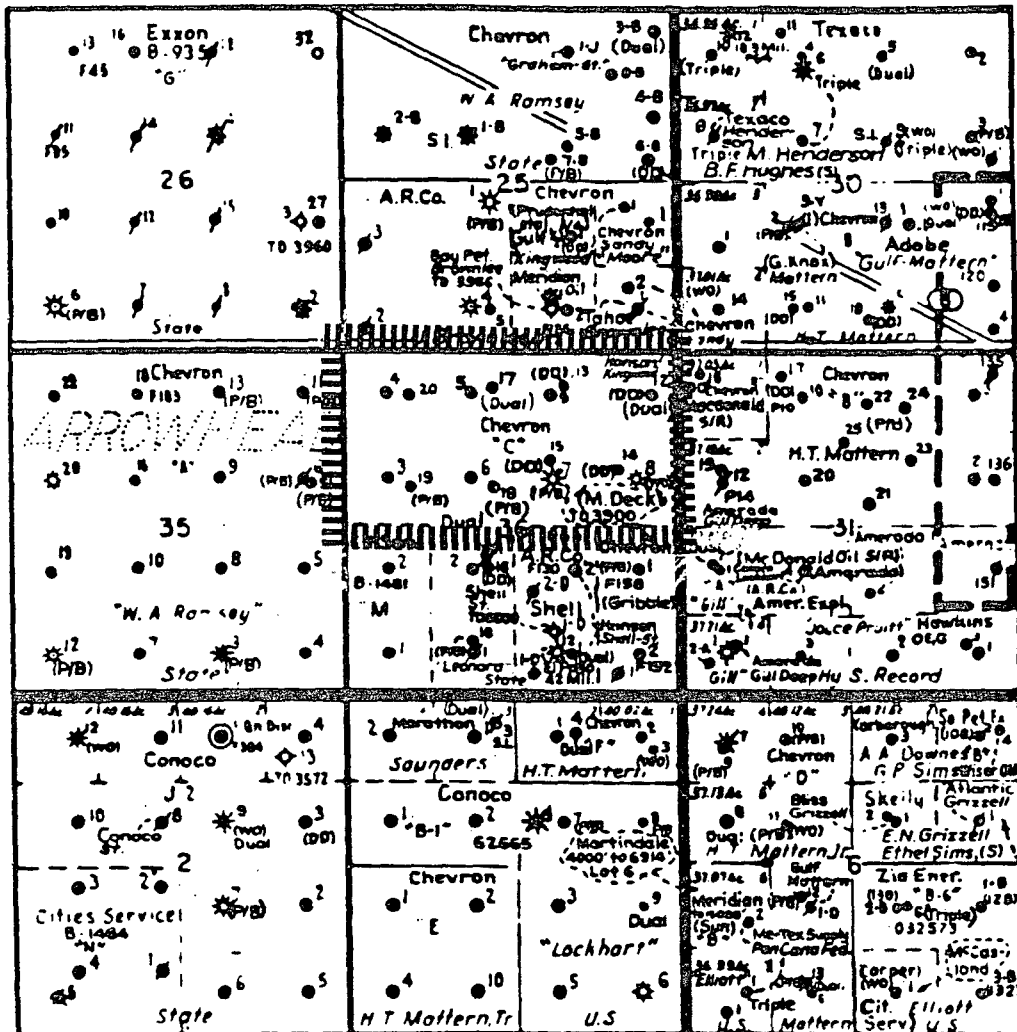
FOR R. C. Anderson

JMT/  
Attachments  
Enclosures

cc: NMOCD - Hobbs

CHEVRON U.S.A. INC.  
Harry Leonard (NCT-C) Lease

Application For An Unorthodox  
Gas Well Location  
and  
Sumultaneous Dedication of Acreage  
Eumont (Pro Gas) Pool  
660' FNL and 660' FWL  
Section 36, T21S, R36E  
Lea County, New Mexico



OIL CONSERVATION DIVISION

P.O. Box 2088  
Santa Fe, New Mexico 87504-2088

DISTRICT I  
P.O. Box 1980, Hobbs, NM 88240

DISTRICT II  
P.O. Drawer DD, Artesia, NM 88210

DISTRICT III  
1000 Rio Brazos Rd., Aztec, NM 87410

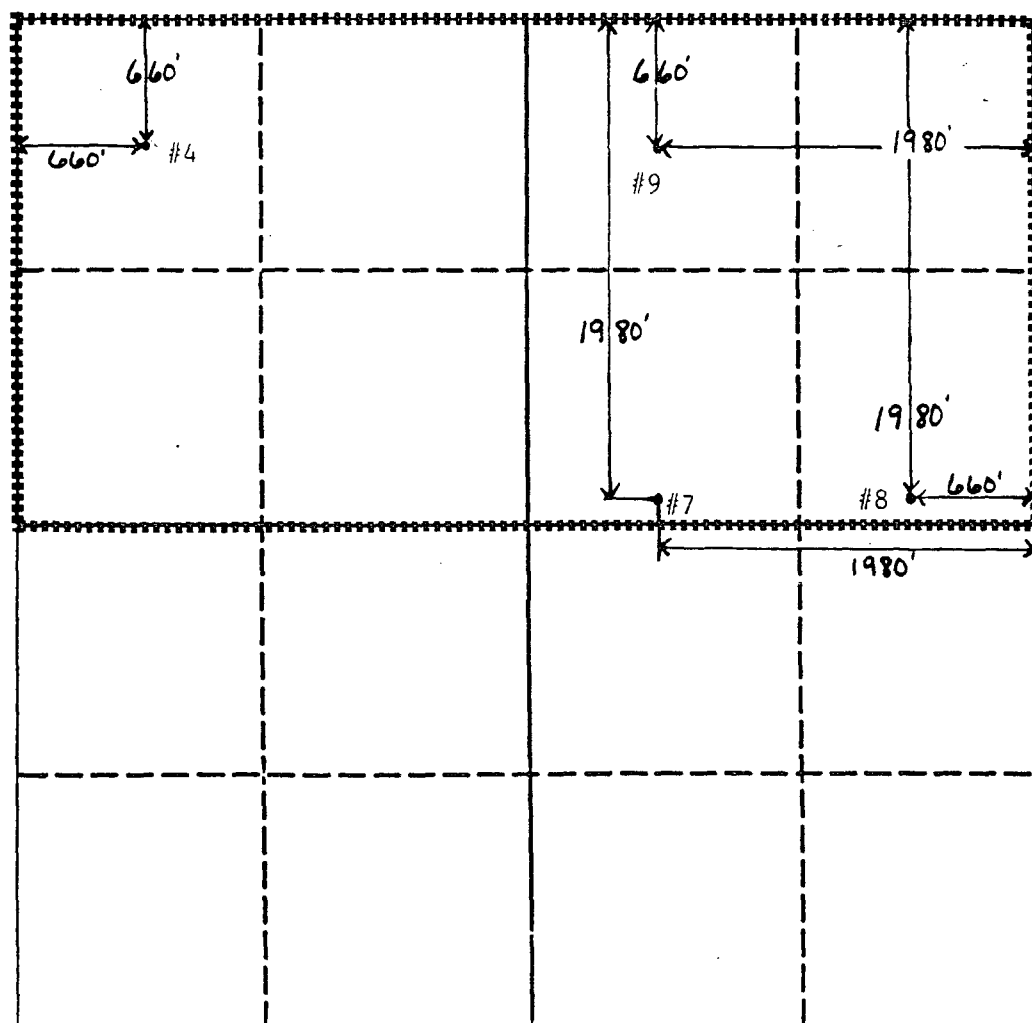
WELL LOCATION AND ACREAGE DEDICATION PLAT

All Distances must be from the outer boundaries of the section

\*SIMULTANEOUS DEDICATION  
OF ACREAGE

Operator Chevron U.S.A. Inc.			Lease Harry Leonard NCT-C		Well No. 4
Unit Letter D	Section 36	Township 21S	Range 36E	County NMPM Lea	
Actual Footage Location of Well: 660 feet from the North line and 660 feet from the West line					
Ground level Elev. 3531'	Producing Formation Queen/Penrose		Pool Eumont	Dedicated Acreage: 320 Acres	

1. Outline the acreage dedicated to the subject well by colored pencil or hatchure marks on the plat below.
2. If more than one lease is dedicated to the well, outline each and identify the ownership thereof (both as to working interest and royalty).
3. If more than one lease of different ownership is dedicated to the well, have the interest of all owners been consolidated by communitization, unitization, force-pooling, etc?  
☐ Yes ☐ No If answer is "yes" type of consolidation \_\_\_\_\_  
If answer is "no" list the owners and tract descriptions which have actually been consolidated. (Use reverse side of this form if necessary). \_\_\_\_\_  
No allowable will be assigned to the well until all interests have been consolidated (by communitization, unitization, forced-pooling, or otherwise) or until a non-standard unit, eliminating such interest, has been approved by the Division.



OPERATOR CERTIFICATION

I hereby certify that the information contained herein is true and complete to the best of my knowledge and belief.

Signature  
*M. E. Akins* 7/10/90  
Printed Name  
M. E. Akins  
Position  
Staff Drlg. Engr.  
Company  
Chevron U.S.A. Inc.  
Date  
7-10-90

SURVEYOR CERTIFICATION

I hereby certify that the well location shown on this plat was plotted from field notes of actual surveys made by me or under my supervision, and that the same is true and correct to the best of my knowledge and belief.

Date Surveyed  
Signature & Seal of Professional Surveyor  
Certificate No.

OIL CONSERVATION DIVISION

P.O. Box 2088  
Santa Fe, New Mexico 87504-2088

DISTRICT I  
P.O. Box 1980, Hobbs, NM 88240

DISTRICT II  
P.O. Drawer DD, Artesia, NM 88210

DISTRICT III  
1000 Rio Brazos Rd., Aztec, NM 87410

WELL LOCATION AND ACREAGE DEDICATION PLAT

All Distances must be from the outer boundaries of the section

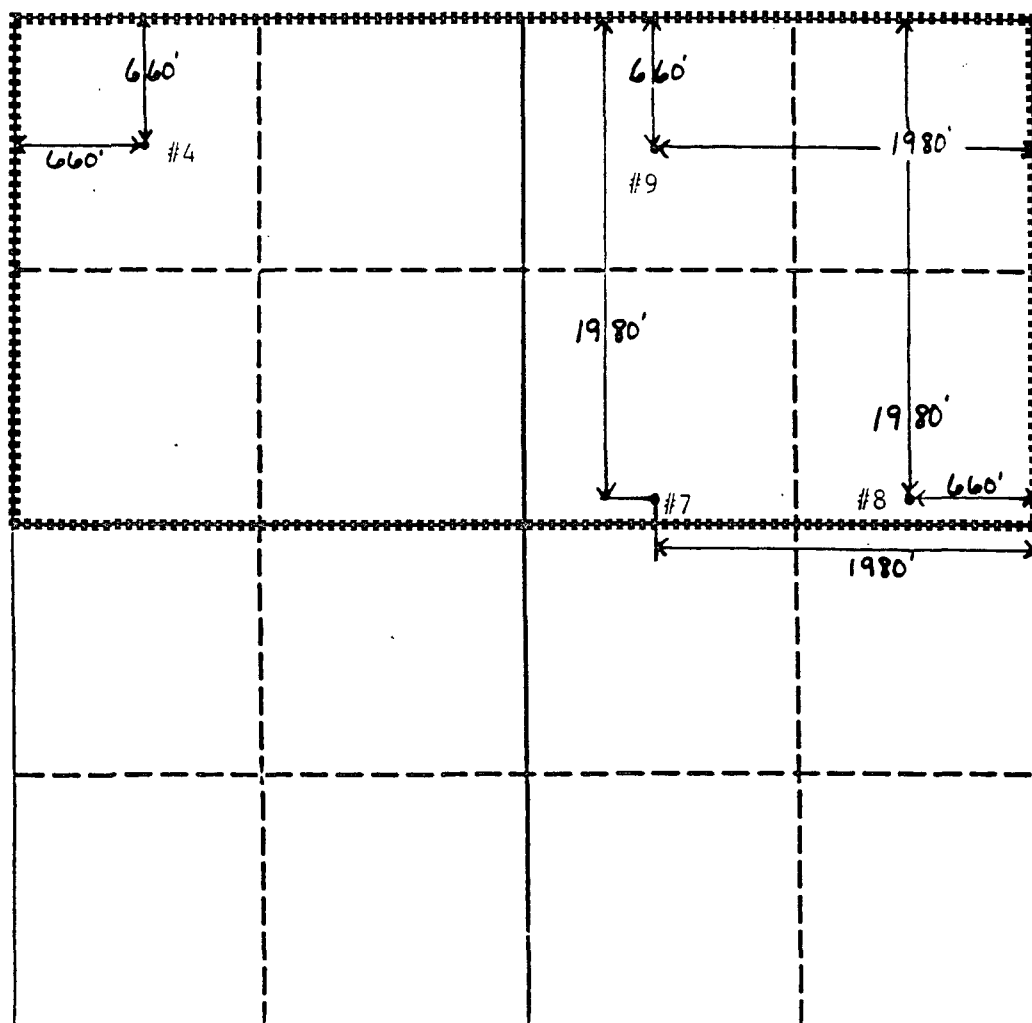
\*SIMULTANEOUS DEDICATION  
OF ACREAGE

Operator Chevron U.S.A. Inc.			Lease Harry Leonard NCT-C		Well No. 7
Unit Letter G	Section 36	Township 21S	Range 36E	County NMNM Lea	
Actual Footage Location of Well: 1980 feet from the North line and 1980 feet from the East line					
Ground level Elev. 3531'	Producing Formation Queen/Penrose		Pool Eumont	Dedicated Acreage: 320 Acres	

1. Outline the acreage dedicated to the subject well by colored pencil or hatchure marks on the plat below.
2. If more than one lease is dedicated to the well, outline each and identify the ownership thereof (both as to working interest and royalty).
3. If more than one lease of different ownership is dedicated to the well, have the interest of all owners been consolidated by communitization, unitization, force-pooling, etc.?  
☐ Yes ☐ No If answer is "yes" type of consolidation \_\_\_\_\_

If answer is "no" list the owners and tract descriptions which have actually been consolidated. (Use reverse side of this form if necessary.) \_\_\_\_\_

No allowable will be assigned to the well until all interests have been consolidated (by communitization, unitization, forced-pooling, or otherwise) or until a non-standard unit, eliminating such interest, has been approved by the Division.



OPERATOR CERTIFICATION

I hereby certify that the information contained herein is true and complete to the best of my knowledge and belief.

Signature

M. E. Akins 7/10/90

Printed Name

M. E. Akins

Position

Staff Drlg. Engr.

Company

Chevron U.S.A. Inc.

Date

7-10-90

SURVEYOR CERTIFICATION

I hereby certify that the well location shown on this plat was plotted from field notes of actual surveys made by me or under my supervision, and that the same is true and correct to the best of my knowledge and belief.

Date Surveyed

Signature & Seal of  
Professional Surveyor

Certificate No.

0 330 660 990 1320 1650 1980 2310 2640 2000 1500 1000 500 0

OIL CONSERVATION DIVISION

P.O. Box 2088

Santa Fe, New Mexico 87504-2088

DISTRICT I  
P.O. Box 1980, Hobbs, NM 88240

DISTRICT II  
P.O. Drawer DD, Artesia, NM 88210

DISTRICT III  
1000 Rio Brazos Rd., Aztec, NM 87410

WELL LOCATION AND ACREAGE DEDICATION PLAT

All Distances must be from the outer boundaries of the section

\*SIMULTANEOUS DEDICATION  
OF ACREAGE

Operator Chevron U.S.A. Inc.			Lease Harry Leonard NCT-C		Well No. 8
Unit Letter H	Section 36	Township 21S	Range 36E	County Lea	
Actual Footage Location of Well: 1980 feet from the North line and 660 feet from the East line					
Ground level Elev. 3531'	Producing Formation Queen/Penrose		Pool Eumont	Dedicated Acreage: 320 Acres	

1. Outline the acreage dedicated to the subject well by colored pencil or hatchure marks on the plat below.

2. If more than one lease is dedicated to the well, outline each and identify the ownership thereof (both as to working interest and royalty).

3. If more than one lease of different ownership is dedicated to the well, have the interest of all owners been consolidated by communitization, unitization, force-pooling, etc.?

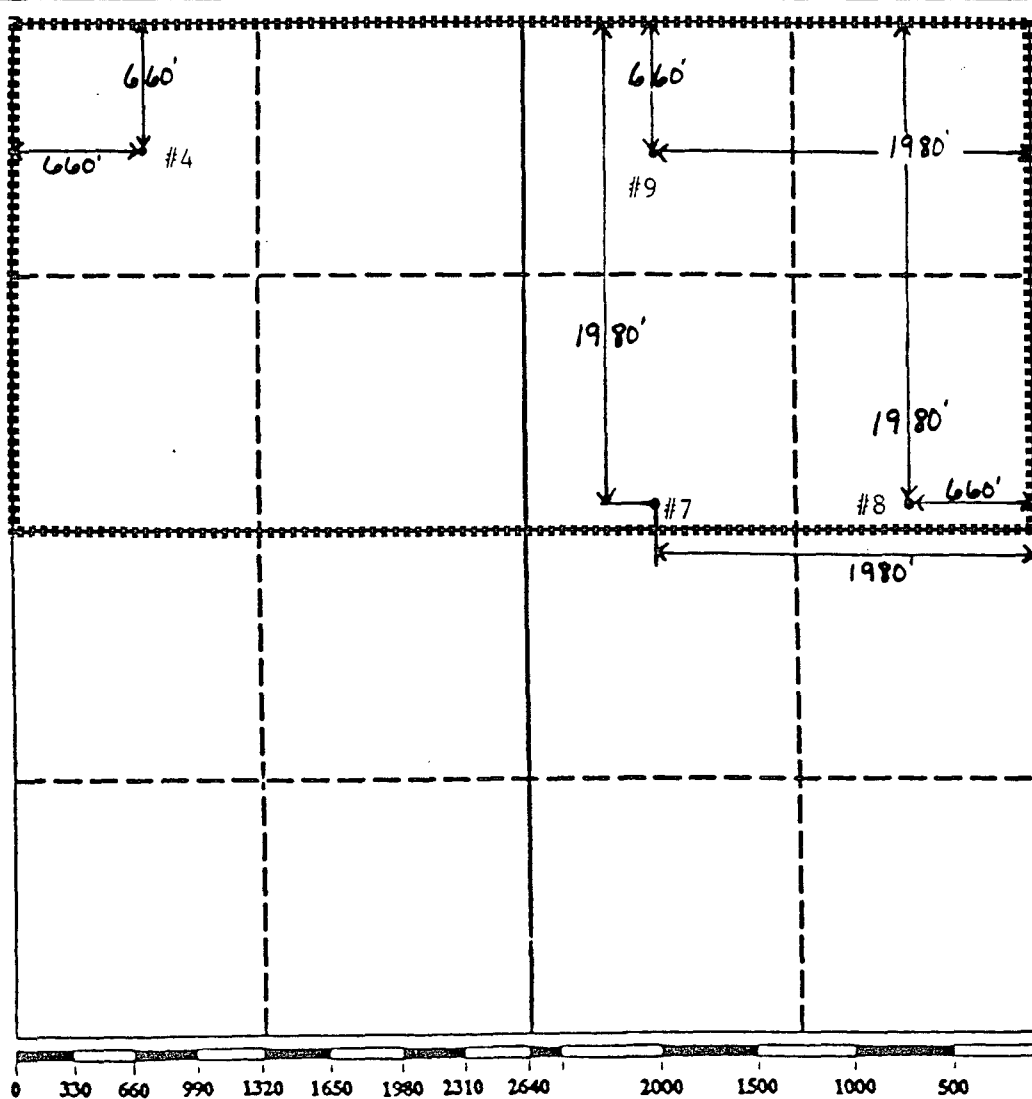
☐ Yes

☐ No

If answer is "yes" type of consolidation

If answer is "no" list the owners and tract descriptions which have actually been consolidated. (Use reverse side of this form if necessary.)

No allowable will be assigned to the well until all interests have been consolidated (by communitization, unitization, forced-pooling, or otherwise) or until a non-standard unit, eliminating such interest, has been approved by the Division.



OPERATOR CERTIFICATION

I hereby certify that the information contained herein is true and complete to the best of my knowledge and belief.

Signature

M. E. Akins 7/10/90

Printed Name

M. E. Akins

Position

Staff Drlg. Engr.

Company

Chevron U.S.A. Inc.

Date

7-10-90

SURVEYOR CERTIFICATION

I hereby certify that the well location shown on this plat was plotted from field notes of actual surveys made by me or under my supervision, and that the same is true and correct to the best of my knowledge and belief.

Date Surveyed

Signature & Seal of  
Professional Surveyor

Certificate No.



OIL CONSERVATION DIVISION

P.O. Box 2088

Santa Fe, New Mexico 87504-2088

DISTRICT I  
P.O. Box 1980, Hobbs, NM 88240

DISTRICT II  
P.O. Drawer DD, Artesia, NM 88210

DISTRICT III  
1000 Rio Brazos Rd., Aztec, NM 87410

WELL LOCATION AND ACREAGE DEDICATION PLAT

All Distances must be from the outer boundaries of the section

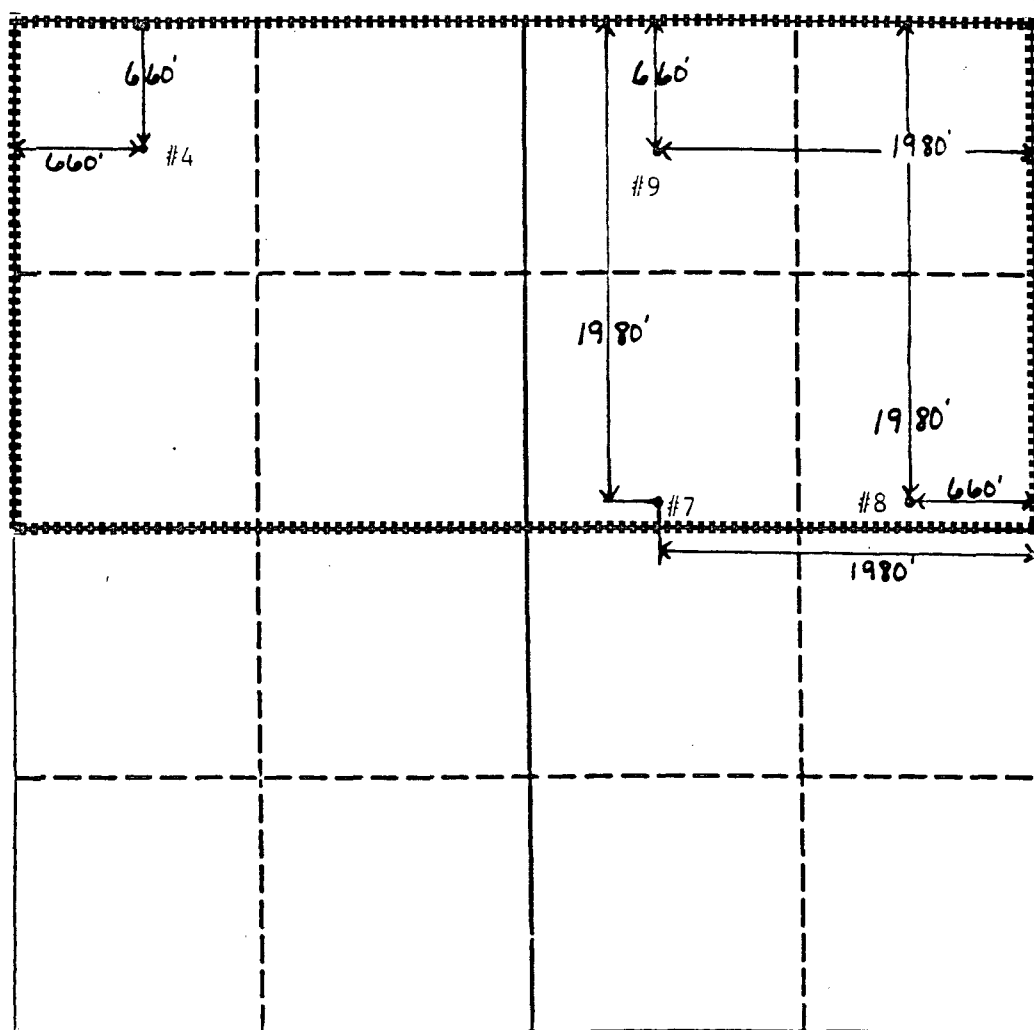
\*SIMULTANEOUS DEDICATION  
OF ACREAGE

Operator Chevron U.S.A. Inc.			Lease Harry Leonard NCT-C		Well No. 9
Unit Letter B	Section 36	Township 21S	Range 36E	County Lea	
Actual Footage Location of Well: 660 feet from the North line and 1980 feet from the East line					
Ground level Elev. 3531'	Producing Formation Queen/Penrose		Pool Eumont	Dedicated Acreage: 320 Acres	

1. Outline the acreage dedicated to the subject well by colored pencil or hatchure marks on the plat below.
2. If more than one lease is dedicated to the well, outline each and identify the ownership thereof (both as to working interest and royalty).
3. If more than one lease of different ownership is dedicated to the well, have the interest of all owners been consolidated by communitization, unitization, force-pooling, etc.?  
☐ Yes ☐ No If answer is "yes" type of consolidation \_\_\_\_\_

If answer is "no" list the owners and tract descriptions which have actually been consolidated. (Use reverse side of this form if necessary.)

No allowable will be assigned to the well until all interests have been consolidated (by communitization, unitization, forced-pooling, or otherwise) or until a non-standard unit, eliminating such interest, has been approved by the Division.



OPERATOR CERTIFICATION

I hereby certify that the information contained herein is true and complete to the best of my knowledge and belief.

Signature  
M. E. Akins 7/10/90

Printed Name  
M. E. Akins

Position  
Staff Drlg. Engr.

Company  
Chevron U.S.A. Inc.

Date  
7-10-90

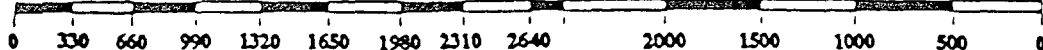
SURVEYOR CERTIFICATION

I hereby certify that the well location shown on this plat was plotted from field notes of actual surveys made by me or under my supervision, and that the same is true and correct to the best of my knowledge and belief.

Date Surveyed

Signature & Seal of  
Professional Surveyor

Certificate No.



CHEVRON U.S.A. INC.  
Harry Leonard (NCT-C) Lease

Application For An Unorthodox  
Gas Well Location  
and  
Sumultaneous Dedication of Acreage  
Eumont (Pro Gas) Pool  
660' FNL and 660' FWL  
Section 36, T21S, R36E  
Lea County, New Mexico

---

OFFSET OPERATORS

Amerada Hess Corporation  
P.O. Box 2040  
Tulsa Ok, 74012

American Exploration Co.  
2100 RepublicBank Center  
700 Louisiana  
Houston, Tx 77080

Arco Oil and Gas Company  
P.O. Box 1610  
Midland, Tx 79702

Exxon Company U.S.A.  
P.O. Box 1600  
Attn: R.D. Goddard  
Midland, Tx 79702-1600

Hanson Operating Company, Inc.  
P.O. Box 1515  
400 N. Pennsylvania Suite 1200  
Roswell, NM 88201

Jack Markham  
(Wellborn & Markham)  
1500 Broadway Suite 1212  
Lubbock, Tx 79401

Meridian Oil Inc.  
21 Desta Drive  
Midland, Tx 79701

Oxy USA, Inc.  
P.O. Box 50250  
Midland, Tx 79710

Tahoe Energy Inc.  
3909 W. Industrial  
Midland, Tx 79703

CHEVRON U.S.A. INC.  
Harry Leonard (NCT-C) Lease

Application For An Unorthodox  
Gas Well Location  
and  
Simultaneous Dedication of Acreage  
Eumont (Pro Gas) Pool  
660' FNL and 660' FWL  
Section 36, T21S, R36E  
Lea County, New Mexico

---

WAIVER TO OBJECTION

We, the undersigned, as an offset operator, waive any objection to Chevron U.S.A. Inc.'s application for NMOCD approval of an Unorthodox Gas Well Location in the Eumont (Pro Gas) Pool. This well is located 660' FNL and 660' FWL, Section 36, T-21-S, R-36-E, NMPM, Lea County, New Mexico. We understand that this 320 acre proration unit will be simultaneously dedicated to the Harry Leonard (NCT-C) Wells No. 4, 7, 8 and 9 located in unit letters D, G, H and B, respectively, of Section 36.

Company: American Exploration  
Representative: David Norris  
Signature: Daniel Veltre  
Title: Production Engineering Manager  
Date: 8-20-90

CHEVRON U.S.A. INC.  
Harry Leonard (NCT-C) Lease

Application For An Unorthodox  
Gas Well Location  
and  
Simultaneous Dedication of Acreage  
Eumont (Pro Gas) Pool  
660' FNL and 660' FWL  
Section 36, T21S, R36E  
Lea County, New Mexico

---

WAIVER TO OBJECTION

---

We, the undersigned, as an offset operator, waive any objection to Chevron U.S.A. Inc.'s application for NMOC approval of an Unorthodox Gas Well Location in the Eumont (Pro Gas) Pool. This well is located 660' FNL and 660' FWL, Section 36, T-21-S, R-36-E, NMPM, Lea County, New Mexico. We understand that this 320 acre proration unit will be simultaneously dedicated to the Harry Leonard (NCT-C) Wells No. 4, 7, 8 and 9 located in unit letters D, G, H and B, respectively, of Section 36.

Company: \_\_\_\_\_

Representative: \_\_\_\_\_

Signature: David Veltri

Title: \_\_\_\_\_

Date: \_\_\_\_\_

CHEVRON U.S.A. INC.  
Harry Leonard (NCT-C) Lease

Application For An Unorthodox  
Gas Well Location  
and  
Simultaneous Dedication of Acreage  
Eumont (Pro Gas) Pool  
660' FNL and 660' FWL  
Section 36, T21S, R36E  
Lea County, New Mexico

---

WAIVER TO OBJECTION

---

We, the undersigned, as an offset operator, waive any objection to Chevron U.S.A. Inc.'s application for NMOCD approval of an Unorthodox Gas Well Location in the Eumont (Pro Gas) Pool. This well is located 660' FNL and 660' FWL, Section 36, T-21-S, R-36-E, NMPM, Lea County, New Mexico. We understand that this 320 acre proration unit will be simultaneously dedicated to the Harry Leonard (NCT-C) Wells No. 4, 7, 8 and 9 located in unit letters D, G, H and B, respectively, of Section 36.

Company: \_\_\_\_\_

Representative: \_\_\_\_\_

Signature: Daniel Veltri

Title: \_\_\_\_\_

Date: \_\_\_\_\_

CHEVRON U.S.A. INC.  
Harry Leonard (NCT-C) Lease

Application For An Unorthodox  
Gas Well Location  
and  
Sumultaneous Dedication of Acreage  
Eumont (Pro Gas) Pool  
660' FNL and 660' FWL  
Section 36, T21S, R36E  
Lea County, New Mexico

---

WAIVER TO OBJECTION

We, the undersigned, as an offset operator, waive any objection to Chevron U.S.A. Inc.'s application for NMOCD approval of an Unorthodox Gas Well Location in the Eumont (Pro Gas) Pool. This well is located 660' FNL and 660' FWL, Section 36, T-21-S, R-36-E, NMPM, Lea County, New Mexico. We understand that this 320 acre proration unit will be simultaneously dedicated to the Harry Leonard (NCT-C) Wells No. 4, 7, 8 and 9 located in unit lettrs D, G, H and B, respectively, of Section 36.

Company: \_\_\_\_\_

Representative: \_\_\_\_\_

Signature: David J. Veltin

Title: \_\_\_\_\_

Date: \_\_\_\_\_

CHEVRON U.S.A. INC.  
Harry Leonard (NCT-C) Lease

Application For An Unorthodox  
Gas Well Location  
and  
Simultaneous Dedication of Acreage  
Eumont (Pro Gas) Pool  
660' FNL and 660' FWL  
Section 36, T21S, R36E  
Lea County, New Mexico

---

WAIVER TO OBJECTION

We, the undersigned, as an offset operator, waive any objection to Chevron U.S.A. Inc.'s application for NMOCD approval of an Unorthodox Gas Well Location in the Eumont (Pro Gas) Pool. This well is located 660' FNL and 660' FWL, Section 36, T-21-S, R-36-E, NMPM, Lea County, New Mexico. We understand that this 320 acre proration unit will be simultaneously dedicated to the Harry Leonard (NCT-C) Wells No. 4, 7, 8 and 9 located in unit lettrs D, G, H and B, respectively, of Section 36.

Company: \_\_\_\_\_

Representative: \_\_\_\_\_

Signature: Daniel Veltri

Title: \_\_\_\_\_

Date: \_\_\_\_\_

OIL CONSERVATION DIVISION  
RECEIVED

CHEVRON U.S.A. INC.  
Harry Leonard (NCT-C) Lease

'90 JUL 23 AM 9 21

Application For An Unorthodox  
Gas Well Location  
and  
Simultaneous Dedication of Acreage  
Eumont (Pro Gas) Pool  
660' FNL and 660' FWL  
Section 36, T21S, R36E  
Lea County, New Mexico

---

WAIVER TO OBJECTION

We, the undersigned, as an offset operator, waive any objection to Chevron U.S.A. Inc.'s application for NMOC approval of an Unorthodox Gas Well Location in the Eumont (Pro Gas) Pool. This well is located 660' FNL and 660' FWL, Section 36, T-21-S, R-36-E, NMPM, Lea County, New Mexico. We understand that this 320 acre proration unit will be simultaneously dedicated to the Harry Leonard (NCT-C) Wells No. 4, 7, 8 and 9 located in unit letters D, G, H and B, respectively, of Section 36.

Company: HANSON Operating Company, Inc.

Representative: RAY WILLIS

Signature: Ray Willis

Title: V-P

Date: 7-20-90



OIL CONSERVATION DIVISION  
RECEIVED

'90 JUL 23 AM 9 07

CHEVRON U.S.A. INC.  
Harry Leonard (NCT-C) Lease

Application For An Unorthodox  
Gas Well Location  
and  
Sumultaneous Dedication of Acreage  
Eumont (Pro Gas) Pool  
660' FNL and 660' FWL  
Section 36, T21S, R36E  
Lea County, New Mexico

---

WAIVER TO OBJECTION

---

We, the undersigned, as an offset operator, waive any objection to Chevron U.S.A. Inc.'s application for NMOCD approval of an Unorthodox Gas Well Location in the Eumont (Pro Gas) Pool. This well is located 660' FNL and 660' FWL, Section 36, T-21-S, R-36-E, NMPM, Lea County, New Mexico. We understand that this 320 acre proration unit will be simultaneously dedicated to the Harry Leonard (NCT-C) Wells No. 4, 7, 8 and 9 located in unit letters D, G, H and B, respectively, of Section 36.

Company: TAHOE ENERGY, INC.

Representative: K.A. FREEMAN

Signature: *K.A. Freeman*

Title: PRES.

Date: 7/13/90

OIL CONSERVATION DIVISION  
RECEIVED

'90 JUL 24 AM 8 56

CHEVRON U.S.A. INC.  
Harry Leonard (NCT-C) Lease

Application For An Unorthodox  
Gas Well Location  
and  
Sumultaneous Dedication of Acreage  
Eumont (Pro Gas) Pool  
660' FNL and 660' FWL  
Section 36, T21S, R36E  
Lea County, New Mexico

---

WAIVER TO OBJECTION

---

We, the undersigned, as an offset operator, waive any objection to Chevron U.S.A. Inc.'s application for NMOCD approval of an Unorthodox Gas Well Location in the Eumont (Pro Gas) Pool. This well is located 660' FNL and 660' FWL, Section 36, T-21-S, R-36-E, NMPM, Lea County, New Mexico. We understand that this 320 acre proration unit will be simultaneously dedicated to the Harry Leonard (NCT-C) Wells No. 4, 7, 8 and 9 located in unit lettrs D, G, H and B, respectively, of Section 36.

Company: Jack Markham

Representative: \_\_\_\_\_

Signature: \_\_\_\_\_

Title: \_\_\_\_\_

Owner

Date: July 23, 1990

OIL CONSERVATION DIVISION  
RECEIVED

'90 JUL 26 AM 8:58

CHEVRON U.S.A. INC.  
Harry Leonard (NCT-C) Lease

Application For An Unorthodox  
Gas Well Location  
and  
Sumultaneous Dedication of Acreage  
Eumont (Pro Gas) Pool  
660' FNL and 660' FWL  
Section 36, T21S, R36E  
Lea County, New Mexico

---

WAIVER TO OBJECTION

---

We, the undersigned, as an offset operator, waive any objection to Chevron U.S.A. Inc.'s application for NMOCD approval of an Unorthodox Gas Well Location in the Eumont (Pro Gas) Pool. This well is located 660' FNL and 660' FWL, Section 36, T-21-S, R-36-E, NMPM, Lea County, New Mexico. We understand that this 320 acre proration unit will be simultaneously dedicated to the Harry Leonard (NCT-C) Wells No. 4, 7, 8 and 9 located in unit letters D, G, H and B, respectively, of Section 36.

Company: AMERADA HESS CORP.  
Representative: GRANT B. MILLER  
Signature: Grant B. Miller  
Title: OPS. MGR.  
Date: 7/24/90

Bob Anthony  
(seminole)

GEM



**Chevron** U.S.A. Inc.  
P.O. Box 670, Hobbs, NM 88240

July 6, 1990

R. C. Anderson  
Division Manager  
Production Department  
Hobbs Division

WAIVER REQUEST  
ADMINISTRATIVE APPLICATION FOR  
UNORTHODOX GAS WELL LOCATION  
AND SIMULTANEOUS DEDICATION  
EUMONT (PRO GAS) POOL  
660' FNL AND 660' FWL  
SECTION 36, T-21S, R-36E, NMPM  
LEA COUNTY, NEW MEXICO

---

Amerada Hess Corporation  
P.O. Box 2040  
Tulsa, Ok 74012

Gentlemen:

Attached is a copy of Chevron's administrative application for application for NMOCD approval of an Unorthodox Gas Well Location and Simultaneous Dedication in the Eumont (Pro Gas) Pool. The subject well's location of 660' FNL and 660' FWL, Section 36, T-21-S, R-36-E, is unorthodox in that it is less than 990' from one outer boundary of the proration unit. We are also making application to simultaneously dedicate this 320 acre proration unit to our Harry Leonard Wells No. 4, 7, 8 and 9 located in unit letters D, G, H and B respectively, of Section 36.

As an offset operator, if you do not have any objections to the attached application, please sign the enclosed waivers and mail the original and two copies to the NMOCD in Santa Fe and one copy to the NMOCD in Hobbs. We would also request that you send a copy to Chevron U.S.A. Inc. in Hobbs. We have enclosed self addressed, stamped envelopes for your convenience.

If you have any questions, please contact Mr. A. W. Bohling at (505) 393-4121. Your prompt consideration in the above matter is appreciated.

Yours very truly,

FOR R. C. Anderson

JMT/  
Attachments  
Enclosures

cc: NMOCD - Hobbs





STATE OF NEW MEXICO  
ENERGY AND MINERALS DEPARTMENT  
OIL CONSERVATION DIVISION  
HOBBS DISTRICT OFFICE

GARREY CARRUTHERS  
GOVERNOR

7-13-90

POST OFFICE BOX 1980  
HOBBS, NEW MEXICO 88241-1980  
(505) 393-6161

OIL CONSERVATION DIVISION  
P. O. BOX 2088  
SANTA FE, NEW MEXICO 87501

RE: Proposed:

MC \_\_\_\_\_  
DHC \_\_\_\_\_  
NSL X + SD  
NSP \_\_\_\_\_  
SWD \_\_\_\_\_  
WFX \_\_\_\_\_  
PMX \_\_\_\_\_

Gentlemen:

I have examined the application for the:

Chevron USA Inc. Harry Leonard NCT-C #4-D 36-21-36  
Operator Lease & Well No. Unit S-T-R

and my recommendations are as follows:

OK  
\_\_\_\_\_  
\_\_\_\_\_  
\_\_\_\_\_

Yours very truly,

Jerry Sexton  
Jerry Sexton  
Supervisor, District 1

/ed