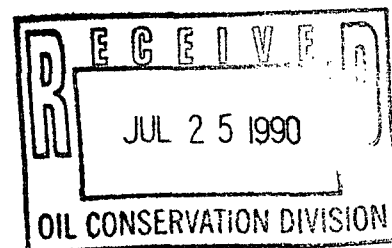


# MERIDIAN OIL

July 24, 1990



Federal Express

Mr. William LeMay  
New Mexico Oil Conservation Division  
Post Office Box 2088  
Santa Fe, New Mexico 87503

RE: San Juan 27-5 Unit #153  
1460'FNL, 1680'FWL  
Section 21, T-27-N, R-05-W  
Rio Arriba, New Mexico

Dear Mr. LeMay:

This is a request for administrative approval for a non-standard gas well location in the Basin Fruitland Pool.

Meridian Oil intends to plugback and recomplete the San Juan 27-5 Unit #153 well from the Pictured Cliffs pool to the Basin Fruitland Coal Pool. The current location of this well is 1460'FNL, 1680'FWL, Section 21, T-27-N, R-05-W, Rio Arriba, New Mexico. The well is considered non-standard due to the NE-SW dedicated pattern established for the Basin Fruitland Coal Pool. To comply with the New Mexico Oil Conservation Division rules, Meridian is submitting the following for your approval of this non-standard location:

1. C-102 plat showing location of the well;
2. Plat showing offset owners/operators;
3. Copy of Well Completion Log for original completion.

All surrounding lands are located within the San Juan 27-5 Unit boundaries - El Paso Natural Gas Company is the operator of this unit.

Sincerely yours,

  
Peggy Bradfield  
encl.

Submit to Appropriate  
District Office  
State Lease - 4 copies  
Fee Lease - 3 copies

State of New Mexico  
Energy, Minerals and Natural Resources Department

Form C-102  
Revised 1-1-89

OIL CONSERVATION DIVISION

P.O. Box 2088

Santa Fe, New Mexico 87504-2088

DISTRICT I

P.O. Box 1980, Hobbs, NM 88240

DISTRICT II

P.O. Drawer DD, Artesia, NM 88210

DISTRICT III

1000 Rio Brazos Rd., Aztec, NM 87410

WELL LOCATION AND ACREAGE DEDICATION PLAT

All Distances must be from the outer boundaries of the section

Operator Meridian Oil Inc.			Lease San Juan 27-5 Unit (Fee)		Well No. 153
Unit Letter F	Section 21	Township 27N	Range 5W	County Rio Arriba	
Actual Footage Location of Well: 1460 feet from the North line and 1680 feet from the West line					
Ground level Elev. 6561'	Producing Formation Fruitland Coal		Pool Basin	Dedicated Acreage: 320 Acres	

1. Outline the acreage dedicated to the subject well by colored pencil or hatchure marks on the plat below.
2. If more than one lease is dedicated to the well, outline each and identify the ownership thereof (both as to working interest and royalty).
3. If more than one lease of different ownership is dedicated to the well, have the interest of all owners been consolidated by communitization, unitization, force-pooling, etc.? ☒ Yes ☐ No If answer is "yes" type of consolidation unitization  
If answer is "no" list the owners and tract descriptions which have actually been consolidated. (Use reverse side of this form if necessary.)  
No allowable will be assigned to the well until all interests have been consolidated (by communitization, unitization, forced-pooling, or otherwise) or until a non-standard unit, eliminating such interest, has been approved by the Division.

Prepared from a plat  
dated 2-26-73  
by David O. Vilven

OPERATOR CERTIFICATION

I hereby certify that the information contained herein is true and complete to the best of my knowledge and belief.

Signature  
Peggy Bradfield  
Printed Name  
Regulatory Affairs  
Position  
Meridian Oil Inc.  
Company  
Date

SURVEYOR CERTIFICATION

I hereby certify that the well location shown on this plat was plotted from field notes of actual surveys made by me or under my supervision, and that the same is true and correct to the best of my knowledge and belief.

Date Surveyed  
Signature  
Professional Surveyor  
NEALE G. EDWARDS  
6857  
6857  
REGISTERED LAND SURVEYOR  
Neale G. Edwards

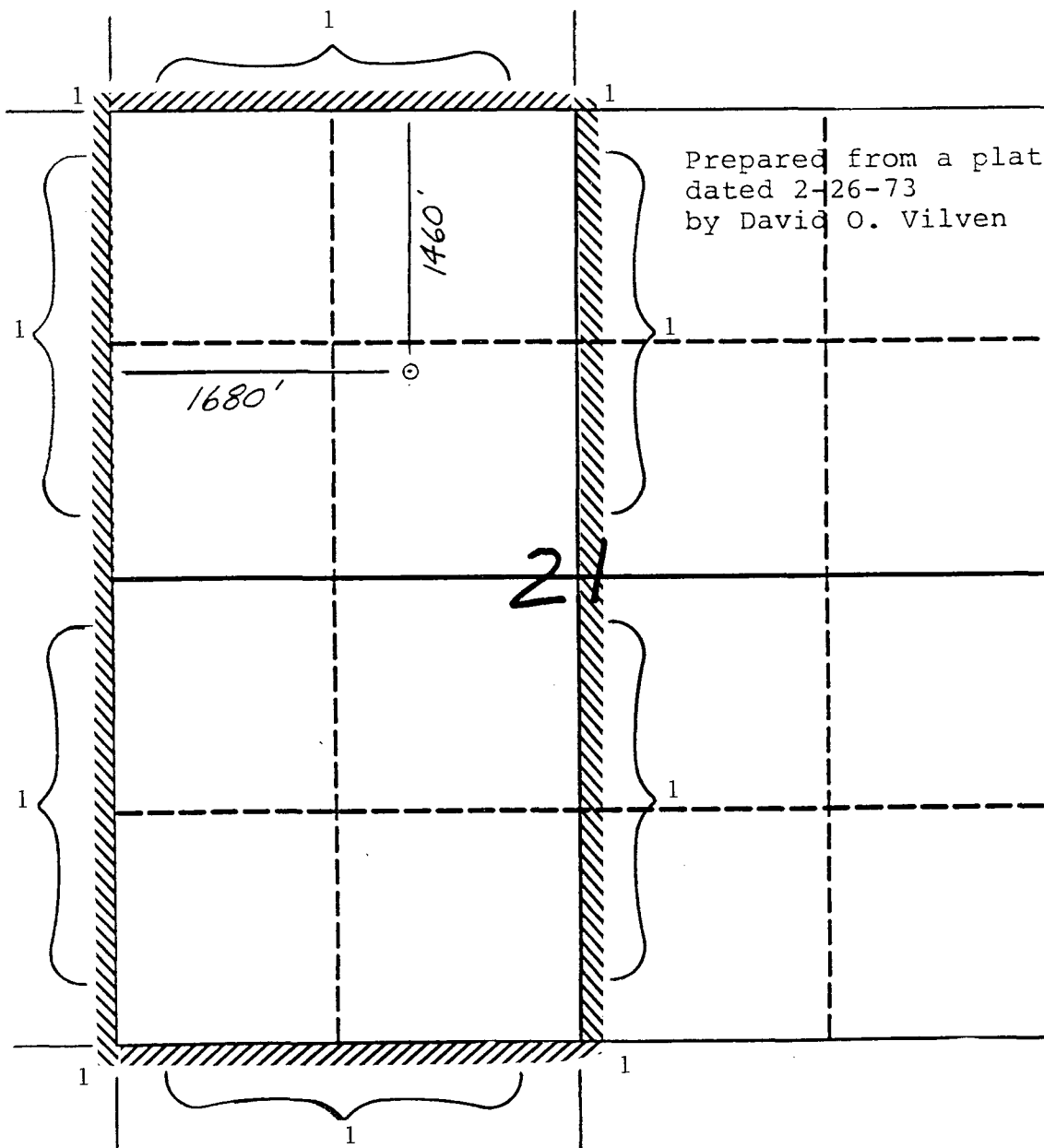
MERIDIAN OIL INC

Well Name San Juan 27-5 Unit #153

Footage 1640' FNL; 1680' FWL

APPLICATION FOR NON-STANDARD LOCATION

County Rio Arriba State New Mexico Section 21 Township 27N Range 5W



Remarks 1) El Paso Natural Gas Company

\_\_\_\_\_

\_\_\_\_\_

\_\_\_\_\_

\_\_\_\_\_

\_\_\_\_\_

NO. OF COPIES RECEIVED	5
DISTRIBUTION	
SANTA FE	1
FILE	1
U.S.G.S.	2
LAND OFFICE	
OPERATOR	1

Form C-105  
Revised 1-1-65

# NEW MEXICO OIL CONSERVATION COMMISSION WELL COMPLETION OR RECOMPLETION REPORT AND LOG

5a. Indicate Type of Lease  
State ☐ Fee ☒  
5. State Oil & Gas Lease No.

1a. TYPE OF WELL  
OIL WELL ☐ GAS WELL ☒ DRY ☐ OTHER \_\_\_\_\_  
b. TYPE OF COMPLETION  
NEW WELL ☒ WORK OVER ☐ DEEPEN ☐ PLUG BACK ☐ DIFF. RESVR. ☐ OTHER \_\_\_\_\_

7. Unit Agreement Name  
San Juan 27-5 Unit  
8. Farm or Lease Name  
San Juan 27-5 Unit

2. Name of Operator  
El Paso Natural Gas Company

9. Well No.  
153

3. Address of Operator  
PO Box 990, Farmington, NM 87401

10. Field and Pool, or Wildcat  
Tapacito Pictured Cliffs

4. Location of Well  
UNIT LETTER F LOCATED 1460 FEET FROM THE North LINE AND 1680 FEET FROM

12. County  
Rio Arriba

THE West LINE OF SEC. 21 TWP. 27N RGE. 5W NMPM

15. Date Spudded 5-17-73 16. Date T.D. Reached 5-28-73 17. Date Compl. (Ready to Prod.) 7-6-73 18. Elevations (DF, RKB, RT, GR, etc.) 6561'GL 19. Elev. Casinghead

20. Total Depth 3480' 21. Plug Back T.D. 3470' 22. If Multiple Compl., How Many \_\_\_\_\_ 23. Intervals Drilled By \_\_\_\_\_ Rotary Tools \_\_\_\_\_ Cable Tools \_\_\_\_\_

24. Producing Interval(s), of this completion - Top, Bottom, Name  
3354-74' (Pictured Cliffs) 25. Was Directional Survey Made no

26. Type Electric and Other Logs Run  
Ind-Elec; Temp. Survey 27. Was Well Cored no

28. CASING RECORD (Report all strings set in well)					
CASING SIZE	WEIGHT LB./FT.	DEPTH SET	HOLE SIZE	CEMENTING RECORD	AMOUNT PULLED
8 5/8"	24.0#	126'	12 1/4"	107 cu. ft.	
2 7/8"	6.4#	3480'	6 3/4"	227 cu. ft.	

29. LINER RECORD				30. TUBING RECORD		
SIZE	TOP	BOTTOM	SACKS CEMENT	SIZE	DEPTH SET	PACKER SET
					tubingless	

31. Perforation Record (Interval, size and number)  
3354-74' with 30 shots per zone.

32. ACID, SHOT, FRACTURE, CEMENT SQUEEZE, ETC.	
DEPTH INTERVAL	AMOUNT AND KIND MATERIAL USED
<u>3354-74'</u>	<u>26,000# sand; 26,000 gal. water</u>

33. PRODUCTION JUL 19 1973  
Date First Production \_\_\_\_\_ Production Method (Flowing, gas lift, pumping - Size and type pump) flowing Well Status (Prod. or Shut-in) shut in  
Date of Test 7-6-73 Hours Tested 3 Choke Size 3/4" Prod'n. For Test Period \_\_\_\_\_ Oil - Bbl. \_\_\_\_\_ Water - Bbl. \_\_\_\_\_ Gas - Oil Ratio \_\_\_\_\_  
Flow Tubing Press. tubingless Casing Pressure SI 724 Calculated 24-Hour Rate \_\_\_\_\_ Oil - Bbl. \_\_\_\_\_ Gas - MCF 1019 MCF/D Water - Bbl. \_\_\_\_\_ Oil Gravity - API (Corr.) \_\_\_\_\_

34. Disposition of Gas (Sold, used for fuel, vented, etc.) \_\_\_\_\_ Test Witnessed By T. D. Norton

35. List of Attachments \_\_\_\_\_

36. I hereby certify that the information shown on both sides of this form is true and complete to the best of my knowledge and belief.

SIGNED A. J. Duico TITLE Drilling Clerk DATE July 18, 1973