

OIL CONSERVATION DIVISION  
RECEIVED

'91 DEC 20 AM 8 52

November 4, 1991

William J. LeMay, Director  
 State of New Mexico  
 Energy, Minerals and Natural Resources Department  
 Oil Conservation Division  
 Post Office Box 2088  
 State Land Office Building  
 Santa Fe, New Mexico 87504

Re: Unorthodox Location Waiver  
 Mitchell Energy Corporation Rosa Unit #361  
 Meridian Oil Gathering, Inc. - Rosa Unit Operator

Dear Mr. LeMay:

We are submitting an Unorthodox Location Application for the Mitchell Energy Corp. Rosa Unit Well No. 361. Meridian Oil Gathering, Inc., as Operator of the Rosa Unit wells, will receive a copy of the application for approval of the location. The factors determining the location of the site are detailed in the attached package.

If there are no objections to the location, the waiver below will be signed by a representative of Meridian Oil Gathering, Inc.

Thank you for your cooperation.

Sincerely,

TRIGON ENGINEERING, INC.

Cristi Cline  
 Senior Right-of-Way Agent

Attachment

## WAIVER

Meridian Oil Inc. hereby waives objection to Mitchell Energy Corporation's application for an unorthodox location for Rosa Unit Well No. 361.

BY: Kent Beers

TITLE: Attorney-in-Fact  
Meridian Oil Gathering Inc.  
Operator, Rosa Unit - Fruitland formation

DATE 12/18/91

# OIL CONSERVATION DIVISION

DISTRICT I  
P.O. Box 1980, Hobbs, NM 88240

P.O. Box 2088

Santa Fe, New Mexico 87504-2088

EXHIBIT NO. 3

Page 1 of 2

DISTRICT II  
P.O. Drawer DD, Artesia, NM 88210

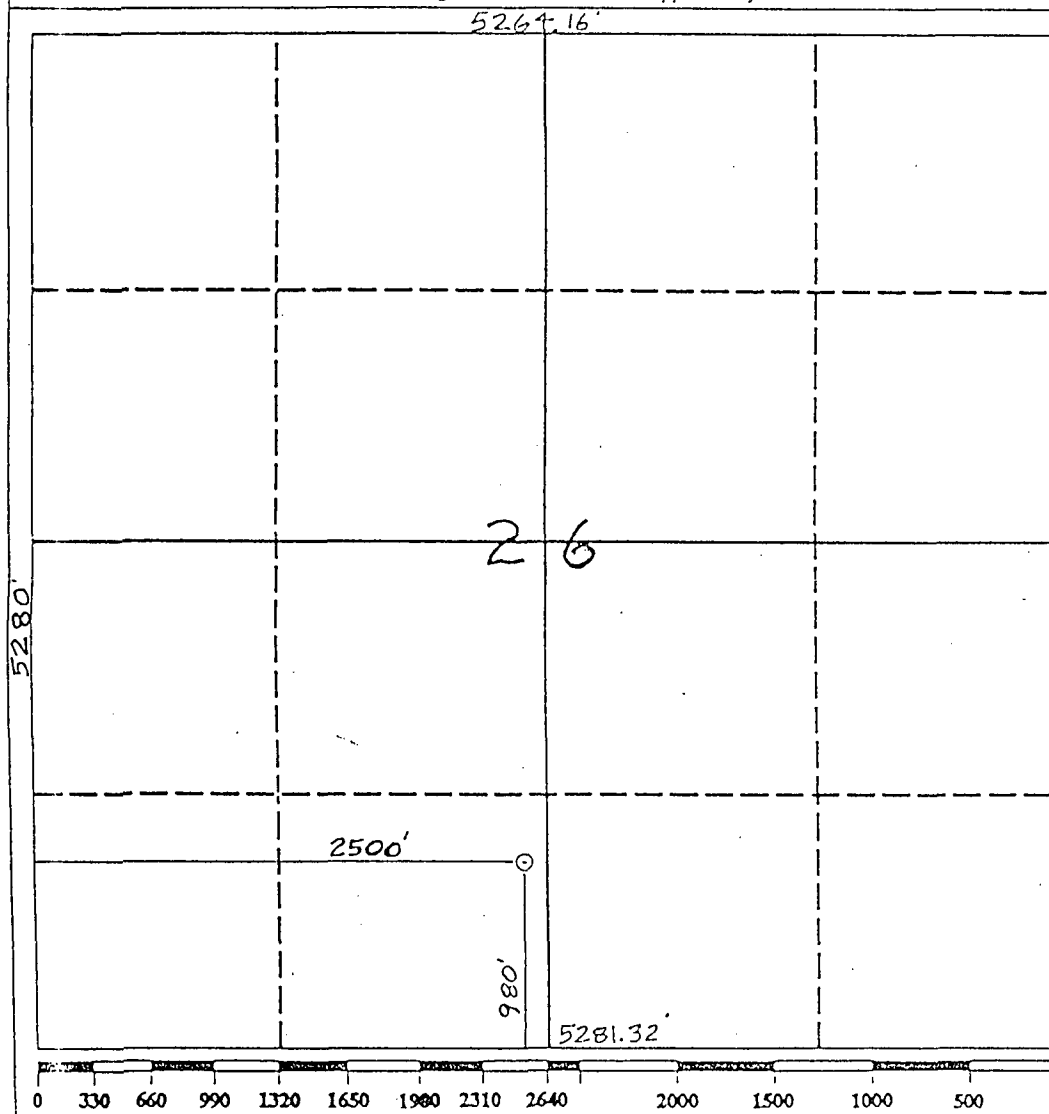
DISTRICT III  
1000 Rio Brazos Rd., Aztec, NM 87410

## WELL LOCATION AND ACREAGE DEDICATION PLAT

All Distances must be from the outer boundaries of the section

Operator Mitchell Energy Corporation			Lease Rosa Unit		Well No. 361
Unit Letter N	Section 26	Township 31 North	Range 5 West	County Rio Arriba	
Actual Footage Location of Well: 980 feet from the South line and 2500 feet from the West line					
Ground Level Elev. 6545'	Producing Formation		Pool	Dedicated Acreage: Acres	

- Outline the acreage dedicated to the subject well by colored pencil or hatchure marks on the plat below.
- If more than one lease is dedicated to the well, outline each and identify the ownership thereof (both as to working interest and royalty).
- If more than one lease of different ownership is dedicated to the well, have the interest of all owners been consolidated by communitization, unitization, force-pooling, etc.?  
☐ Yes ☐ No If answer is "yes" type of consolidation \_\_\_\_\_  
If answer is "no" list the owners and tract descriptions which have actually been consolidated. (Use reverse side of this form if necessary).  
No allowable will be assigned to the well until all interests have been consolidated (by communitization, unitization, forced-pooling, or otherwise) or until a non-standard unit, eliminating such interest, has been approved by the Division.



### OPERATOR CERTIFICATION

I hereby certify that the information contained herein is true and complete to the best of my knowledge and belief.

Signature

Printed Name

Position

Company

Date

### SURVEYOR CERTIFICATION

I hereby certify that the well location shown on this plat was plotted from field notes of actual surveys made by me or under my supervision, and that the same is true and correct to the best of my knowledge and belief.

Date Surveyed

Signature & Seal of Professional Surveyor

Neal C. Edwards

Certificate No.

Standard 640 acre Section

**UNORTHODOX LOCATION APPLICATION  
MITCHELL ENERGY CORPORATION  
ROSA UNIT WELL NO. 361  
Basin Fruitland Coal**

**SITE LOCATION:**

Township 31 North, Range 5 West  
Section 26: SESW  
980' FSL, 2500' FWL

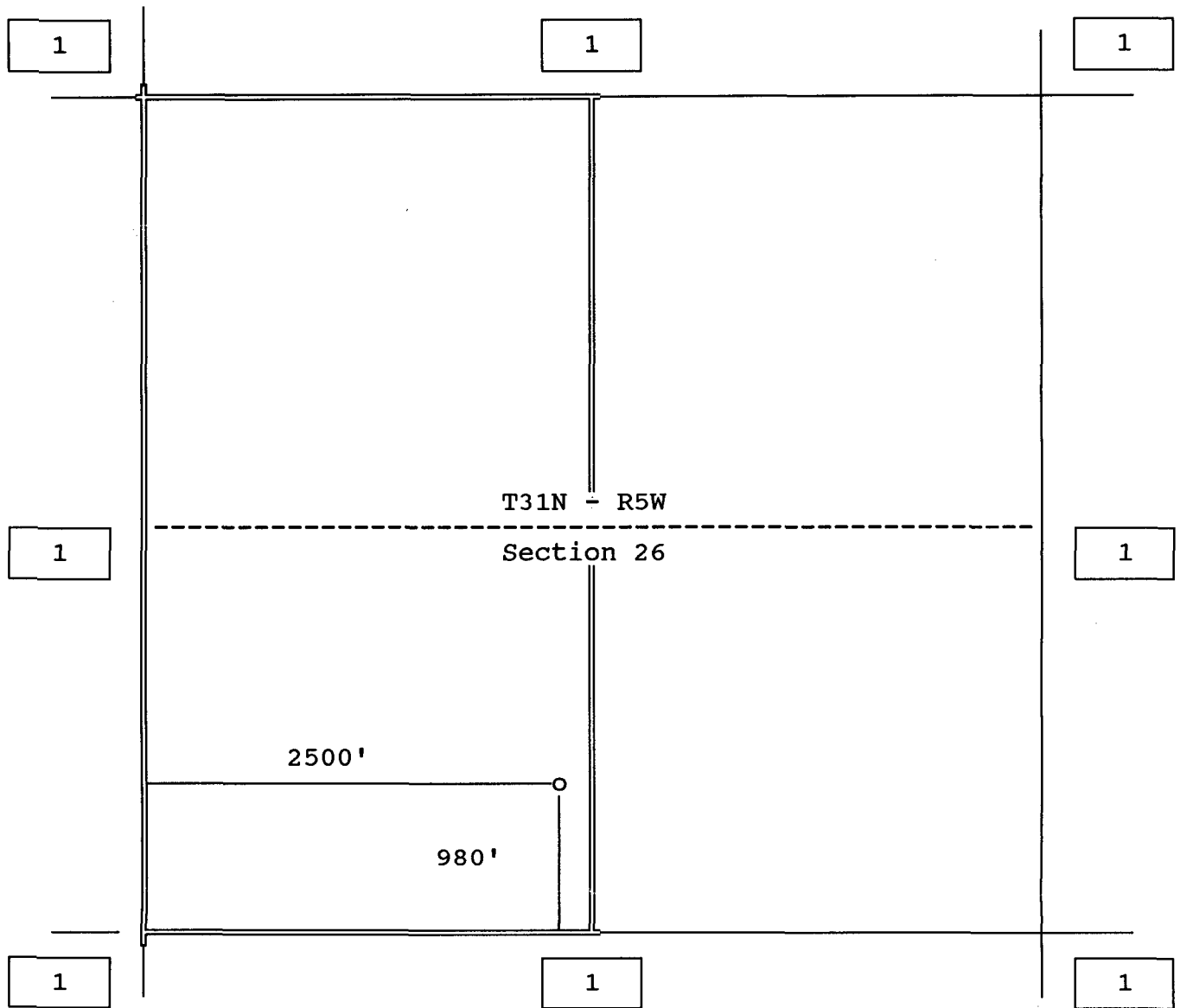
**FACTORS DETERMINING UNORTHODOX LOCATION:**

The site for the Mitchell Energy Corporation Rosa Unit Well No. 361 has been chosen in an unorthodox location due to rugged topography and the concerns of the Carson National Forest Biologist, Joe Harper.

Attempts were made to locate other possible sites for the proposed well, however, due to topography and wildlife concerns, this is the most feasible location.

ROSA UNIT OWNERSHIP PLAT

Mitchell Energy Corporation  
Rosa Unit Well No. 361



1. Offset Owner - Meridian Oil Gathering, Inc.  
Operator of the Rosa Unit



MITCHELL ENERGY - ROSA UNIT #361  
T31N, R5W, Sec. 26; SW¼  
980 FSL 2500 FWL  
Rio Arriba County, NM

KEY:

- Proposed Mitchell FC Gas Wells
- Producing Wells
- Existing Access Roads
- Proposed Access Roads
- Existing Pipeline Route

