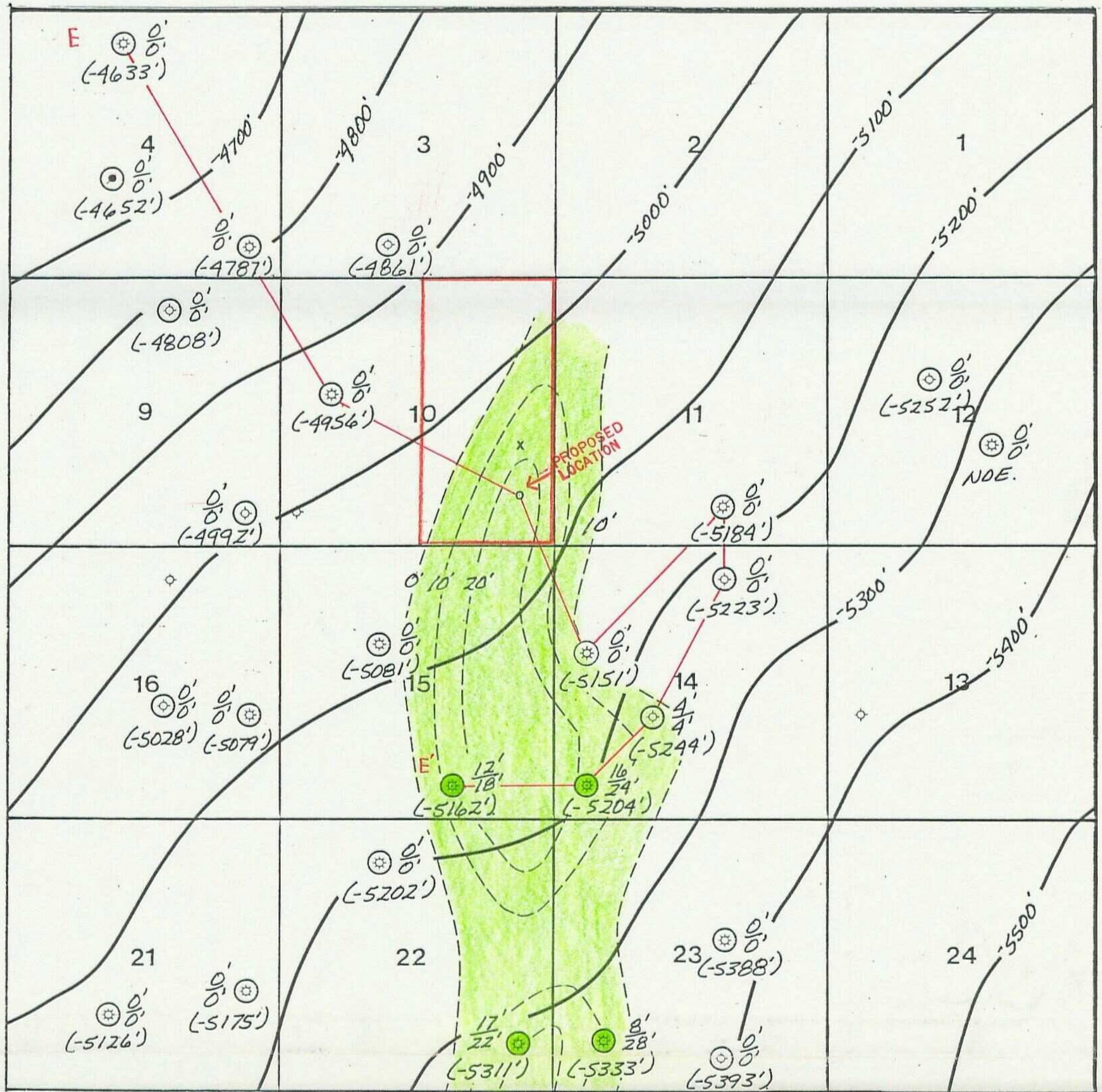


R26E

T17S



EDDY CO., N. M.

SCALE = ONE MILE

KEY:

○ MORROW PENETRATIONS

● MORROW "A" SAND PRODUCER

NET SAND \geq 8%
GROSS SAND

MOC

MEWBOURNE OIL COMPANY

MIDLAND, TEXAS DISTRICT

KENNEDY FARMS PROSPECT
EDDY COUNTY, NEW MEXICO

TOP BARNETT STRUCTURE CONTOUR
CI = 100'

NET MORROW "A" SAND \geq 8% POROSITY ISOPACH
CI = 10'

AUGUST 1991

J. DAVID OVERTON