



Texaco Exploration and Production Inc
Midland Producing Division

OIL CONSERVATION DIVISION

500 N Lordsburg
Midland TX 79701

P O Box 3109
Midland TX 79702

1993 JUN 4 AM 9 02

June 2, 1993

GOV - STATE AND LOCAL GOVERNMENTS

Unorthodox Locations

Rhodes Yates Unit Well No. 17
W. H. Rhodes Federal "A" Well No. 7
W. H. Rhodes Federal "B" NCT-1
Well Nos. 23, 24, 25, 28, 29, and 30
Rhodes Yates Seven Rivers Field
Lea County, New Mexico

State of New Mexico
Energy and Minerals Department
Oil Conservation Division
P. O. Box 2088
Santa Fe, New Mexico 87501-2088

Attention: Mr. Michael E. Stogner

Gentlemen:

An exception, by administrative approval, to Rule 104 F.I. is requested for the captioned wells. Rhodes Yates Unit Well No. 17 is on State land and the remaining wells are on Federal minerals.

The wells must be drilled in these locations to ensure proper development on 20-acre spacing to recover additional reserves in an established waterflood. These reserves could not be recovered with the current 80-acre, 5-spot pattern.

Texaco is the only "affected" offset operator to the Rhodes Yates Unit Well No. 17, the W. H. Rhodes Federal "A" Well No. 7, and the W. H. Rhodes Federal "B" NCT-1 Well No. 25, and we grant ourselves a waiver to this request. There are no "affected" offset operators to the remaining wells.

Attached are Forms C-102, showing the location for each well and a lease plat showing the existing wells.

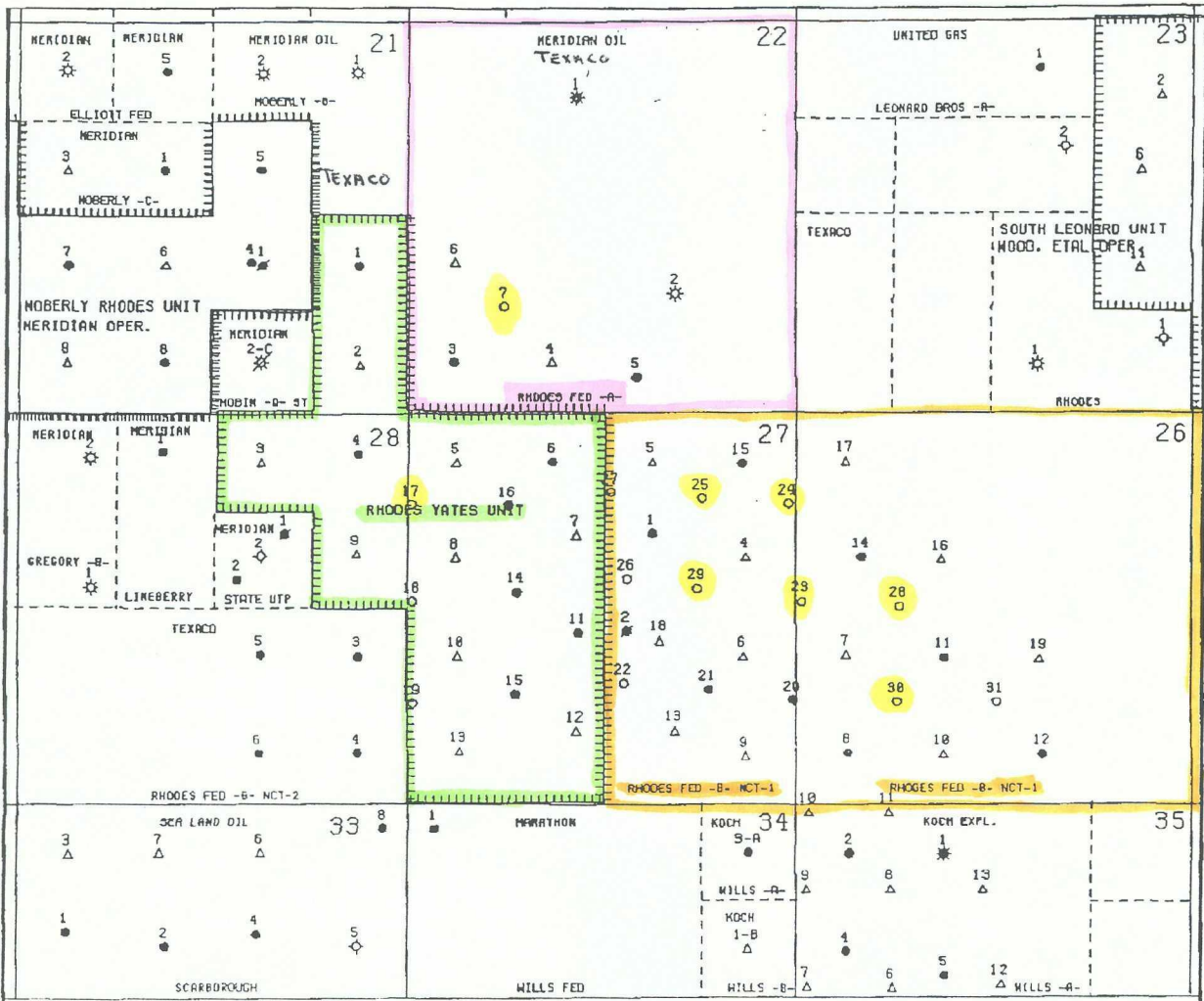
Yours very truly,

C. P. Basham / CWH

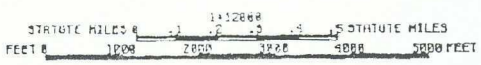
C. P. Basham
Drilling Operations Manager

CWH:

cc: NMOCD, P. O. Box 1980, Hobbs, NM 88240
CC: BLM, P. O. Box 1778, Carlsbad, NM 88220



- OIL WELL
- P&A OIL WELL
- △ INJECTOR
- ☆ GAS WELL
- ☆ P&A GAS WELL
- ☆ OIL & GAS WELL
- ☆ P&A OIL & GAS WELL
- P&A
- LOCATION



TEXACO INC.
 HOBS NM U.S.A.
 RHODES YATES WATERFLOOD
 LEA COUNTY, NEW MEXICO

Submit to Appropriate District Office
 State Lease - 4 copies
 Fee Lease - 3 copies

State of New Mexico
 Energy, Minerals and Natural Resources Department

Form C-102
 Revised 1-1-89

OIL CONSERVATION DIVISION

P.O. Box 2088

Santa Fe, New Mexico 87504-2088

DISTRICT I
 P.O. Box 1980, Hobbs, NM 88240

DISTRICT II
 P.O. Drawer DD, Artesia, NM 88210

DISTRICT III
 1000 Rio Brazos Rd., Aztec, NM 87410

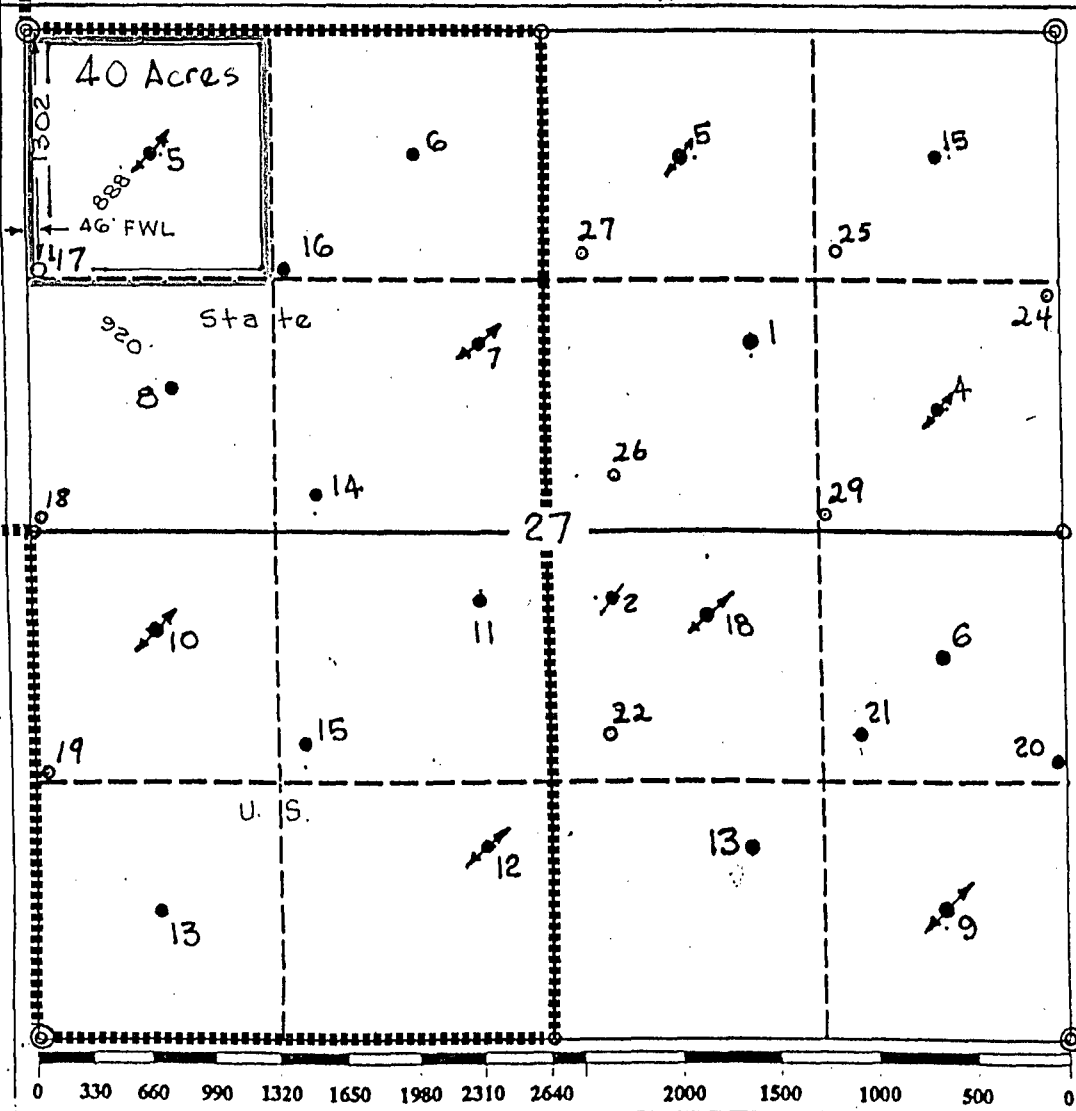
WELL LOCATION AND ACREAGE DEDICATION PLAT

All Distances must be from the outer boundaries of the section

Operator TEXACO EXPLORATION AND PRODUCTION Inc.			Lease RHODES YATES UNIT		Well No. 17
Unit Letter D	Section 27	Township 26-South	Range 37-East	County Isla	
Actual Footage Location of Well: 1302 feet from the North line and 46 feet from the West line					
Ground level Elev. 2973	Producing Formation Yates/7 RVRs	Pool Rhodes Yates Seven Rivers		Dedicated Acreage: 40 Acres	

- Outline the acreage dedicated to the subject well by colored pencil or hatchure marks on the plat below.
- If more than one lease is dedicated to the well, outline each and identify the ownership thereof (both as to working interest and royalty).
- If more than one lease of different ownership is dedicated to the well, have the interest of all owners been consolidated by communitization, unitization, force-pooling, etc.?
 Yes No If answer is "yes" type of consolidation Unitization

If answer is "no" list the owners and tract descriptions which have actually been consolidated. (Use reverse side of this form if necessary.)
 No allowable will be assigned to the well until all interests have been consolidated (by communitization, unitization, forced-pooling, or otherwise) or until a non-standard unit, eliminating such interest, has been approved by the Division.



OPERATOR CERTIFICATION
 I hereby certify that the information contained herein is true and complete to the best of my knowledge and belief.

Signature: *Royce D. Marlott*
 Printed Name: Royce D. Marlott
 Position: Division Surveyor
 Company: Texaco Expl. & Prod. Inc.
 Date: May 24, 1993

SURVEYOR CERTIFICATION
 I hereby certify that the well location shown on this plat was plotted from field notes of actual surveys made by me or under my supervision, and that the same is true and correct to the best of my knowledge and belief.

Date Surveyed: May 19, 1993
 Signature & Seal of Professional Surveyor: *John S. Piper*
 Certificate No.: 7254 John S. Piper
 Sheet: of