



NSC-3289

NSC-3255

Texaco Exploration and Production Inc
Midland Producing Division

500 N Loraine
Midland TX 79701

P O Box 3109
Midland TX 79702

December 20, 1993

OIL CONSERVATION DIVISION
RECEIVED

GOV - STATE AND LOCAL GOVERNMENTS

Unorthodox Locations

West Dollarhide Drinkard Unit

Well Nos. 124, 141, 142, 143, 144, 145, & 146

Lea County, New Mexico

'93 DEC 23 AM 9 48

State of New Mexico

Energy and Minerals Department

Oil Conservation Division

P. O. Box 2088

Santa Fe, New Mexico 87501-2088

Attention: Mr. Michael E. Stogner

Gentlemen:

An exception, by administrative approval, to Rule 104 F.I. is requested for Texaco Exploration and Production Inc.'s West Dollarhide Drinkard Unit Well Nos. 124, 141, 142, 143, 144, 145, and 146. The wells are located as follows:

Well No. 124:	300' FNL & 1350' FWL,	Sec. 4, T-25-S, R-38-E
Well No. 141:	100' FNL & 2580' FEL,	Sec.32, T-24-S, R-38-E
Well No. 142:	1400' FSL & 2580' FEL,	Sec.29, T-24-S, R-38-E
Well No. 143:	1750' FNL & 150' FEL,	Sec.30, T-24-S, R-38-E
Well No. 144:	1400' FSL & 1880' FEL,	Sec.32, T-24-S, R-38-E
Well No. 145:	2539' FSL & 2060' FWL,	Sec.32, T-24-S, R-38-E
Well No. 146:	810' FNL & 2096' FWL,	Sec.32, T-24-S, R-38-E

omit see letter dated 12/27/93
The wells must be drilled in these locations to ensure proper development on 10-acre spacing. Wells drilled previously on 10-acre spacing have proven to be viable wells. These wells will be completed in the Drinkard formation.

It should be noted that there are no affected offset operators to Well Nos. 124, 141, 142, 143, 144, 145, or 146. Well No. 143 is on Federal Minerals.

Attached are Forms C-102 for each well and a lease plat showing the existing wells, and locations of the subject wells.

Yours very truly,

C. P. Basham / CWH

C. P. Basham
Drilling Operations Manager

CWH:cwh

cc: NMOCD, P. O. Box 1980, Hobbs, NM 88240

cc: BLM, P. O. Box 1778, Carlsbad, NM 88220

Submit to Appropriate
District Office
State Lease - 4 copies
Fee Lease - 3 copies

State of New Mexico
Energy, Minerals and Natural Resources Department

Form C-102
Revised 1-1-89

OIL CONSERVATION DIVISION

DISTRICT I
P.O. Box 1940, Hobbs, NM 88240

P.O. Box 2088
Santa Fe, New Mexico 87504-2088

DISTRICT II
P.O. Drawer DD, Artesia, NM 88210

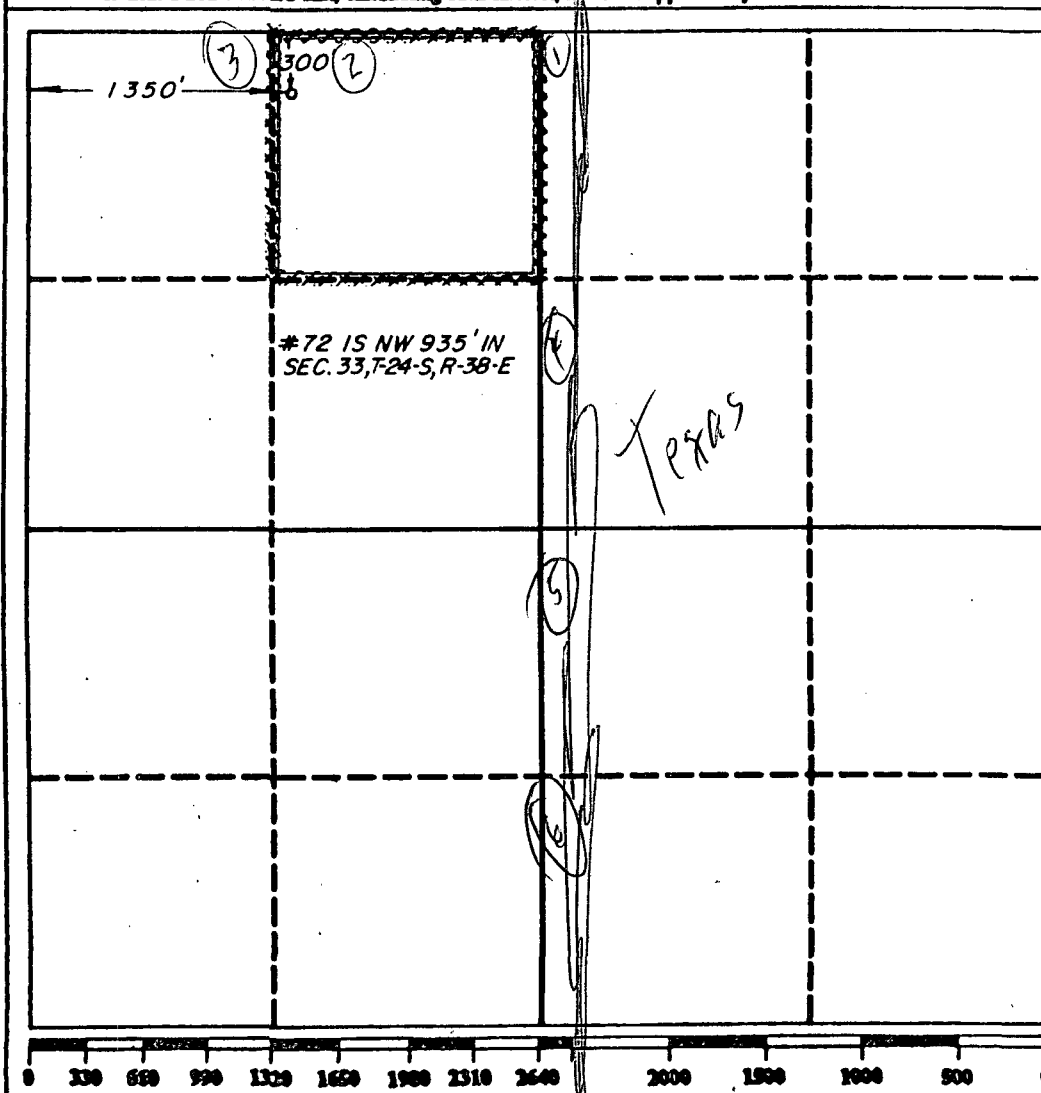
DISTRICT III
1000 Rio Brizos Rd., Aztec, NM 87410

WELL LOCATION AND ACREAGE DEDICATION PLAT

All Distances must be from the outer boundaries of the section

Operator TEXACO EXPLORATION & PRODUCTION			Lease WEST DOLLARHIDE DRINKARD UNIT		Well No. 124
Unit Letter C	Section 4	Township 25 SOUTH	Range 38 EAST	County NMPM LEA	
Actual Footage Location of Well: 300 feet from the NORTH line and 1350' feet from the WEST line					
Ground level Elev. 3162'	Producing Formation TUBB DRINKARD (DRINKARD)		Pool DOLLARHIDE TUBB DRINKARD		Dedicated Acreage: 40 Acres

- Outline the acreage dedicated to the subject well by colored pencil or hatchure marks on the plat below.
- If more than one lease is dedicated to the well, outline each and identify the ownership thereof (both as to working interest and royalty).
- If more than one lease of different ownership is dedicated to the well, have the interest of all owners been consolidated by communitization, unitization, force-pooling, etc.?
☒ Yes ☐ No If answer is "yes" type of consolidation **UNITIZATION**
If answer is "no" list the owners and tract descriptions which have actually been consolidated. (Use reverse side of this form if necessary.)
No allowable will be assigned to the well until all interests have been consolidated (by communitization, unitization, forced-pooling, or otherwise) or until a non-standard unit, eliminating such interest, has been approved by the Division.



OPERATOR CERTIFICATION

I hereby certify that the information contained herein is true and complete to the best of my knowledge and belief.

Signature
R.D. Mariott
Printed Name
R. D. MARIOTT
Position
DIVISION SURVEYOR
Company
TEXACO E & P
Date
December 16, 1993

SURVEYOR CERTIFICATION

I hereby certify that the well location shown on this plat was plotted from field notes of actual surveys made by me or under my supervision, and that the same is true and correct to the best of my knowledge and belief.

December 16, 1993

Date Surveyed

Signature & Seal of
Professional Surveyor

Certificate No.

4882

Submit to Appropriate
District Office
State Lease - 4 copies
Fee Lease - 3 copies

State of New Mexico
Energy, Minerals and Natural Resources Department

Form C-102
Revised 1-1-89

OIL CONSERVATION DIVISION

P.O. Box 2088
Santa Fe, New Mexico 87504-2088

DISTRICT I
P.O. Box 1980, Hobbs, NM 88240

DISTRICT II
P.O. Denver DD, Artesia, NM 88210

DISTRICT III
1000 Rio Brazos Rd., Aztec, NM 87410

WELL LOCATION AND ACREAGE DEDICATION PLAT

All Distances must be from the outer boundaries of the section

Operator TEXACO EXPLORATION & PRODUCTION			Lease WEST DOLLARHIDE DRINKARD UNIT		Well No. 141
Unit Letter B	Section 32	Township 24 SOUTH	Range 38 EAST	County NMPM LEA	
Actual Footage Location of Well: 100 feet from the NORTH line and 2580 feet from the EAST line					
Ground level Elev. 3198'	Producing Formation (ABO &) TUBB DRINKARD(DRINKARD)		Pool DOLLARHIDE TUBB DRINKARD		Dedicated Acreage: 40 Acres
<p>1. Outline the acreage dedicated to the subject well by colored pencil or hectare marks on the plat below.</p> <p>2. If more than one lease is dedicated to the well, outline each and identify the ownership thereof (both as to working interest and royalty).</p> <p>3. If more than one lease of different ownership is dedicated to the well, have the interest of all owners been consolidated by communitization, unitization, force-pooling, etc.?</p> <p><input checked="" type="checkbox"/> Yes <input type="checkbox"/> No If answer is "yes" type of consolidation UNITIZATION</p> <p>If answer is "no" list the owners and tract descriptions which have actually been consolidated. (Use reverse side of this form if necessary.)</p> <p>No allowable will be assigned to the well until all interests have been consolidated (by communitization, unitization, forced-pooling, or otherwise) or until a non-standard unit, eliminating such interest, has been approved by the Division.</p>					
				OPERATOR CERTIFICATION I hereby certify that the information contained herein is true and complete to the best of my knowledge and belief.	
				Signature <i>R.D. Mariott</i> Printed Name R. D. MARIOTT Position DIVISION SURVEYOR Company TEXACO E & P Date December 16, 1993	
				SURVEYOR CERTIFICATION I hereby certify that the well location shown on this plat was plotted from field notes of actual surveys made by me or under my supervision, and that the same is true and correct to the best of my knowledge and belief. December 16, 1993	
				Date Surveyed Signature & Seal of Professional Surveyor <i>Ed B. Quinn</i> Certificate No. 4882	

Submit to Appropriate
District Office
State Lease - 4 copies
Fee Lease - 3 copies

State of New Mexico
Energy, Minerals and Natural Resources Department

Form C-102
Revised 1-1-89

OIL CONSERVATION DIVISION

P.O. Box 2088
Santa Fe, New Mexico 87504-2088

DISTRICT I
P.O. Box 1980, Hobbs, NM 88240

DISTRICT II
P.O. Drawer DD, Artesia, NM 88210

DISTRICT III
1000 Rio Brazos Rd., Aztec, NM 87410

WELL LOCATION AND ACREAGE DEDICATION PLAT

All Distances must be from the outer boundaries of the section

Operator TEXACO EXPLORATION & PRODUCTION			Lease WEST DOLLARHIDE DRINKARD UNIT		Well No. 142
Unit Letter J	Section 29	Township 24 SOUTH	Range 38 EAST	County NMPM LEA	
Actual Footage Location of Well: 1400 feet from the SOUTH line and 2580 feet from the EAST line					
Ground level Elev. 3219'	Producing Formation TUBB DRINKARD (DRINKARD)		Pool DOLLARDHIDE TUBB DRINKARD		Dedicated Acreage: 40 Acres

1. Outline the acreage dedicated to the subject well by colored pencil or ink on the plat below.

2. If more than one lease is dedicated to the well, outline each and identify the ownership thereof (both as to working interest and royalty).

3. If more than one lease of different ownership is dedicated to the well, have the interest of all owners been consolidated by communitization, unitization, force-pooling, etc.?

☒ Yes

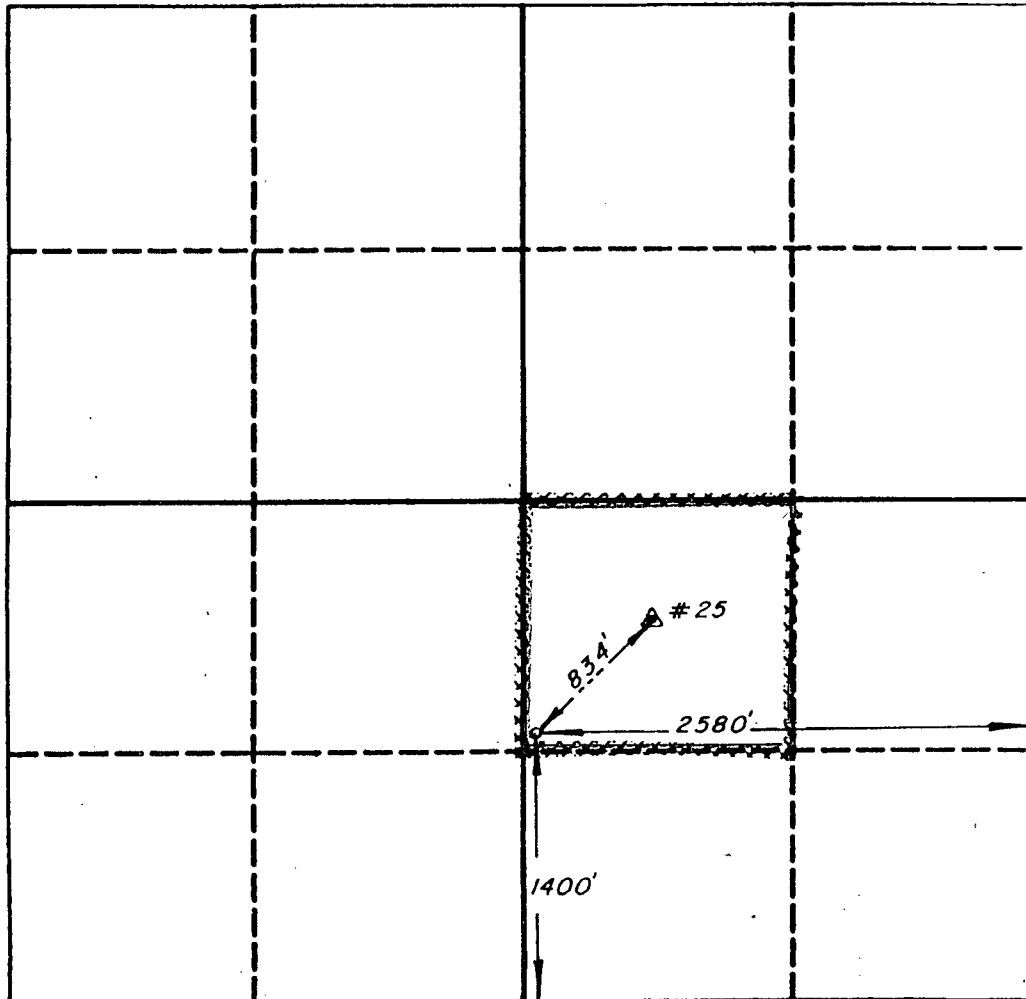
☐ No

If answer is "yes" type of consolidation

UNITIZATION

If answer is "no" list the owners and tract descriptions which have actually been consolidated. (Use reverse side of this form if necessary.)

No allowable will be assigned to the well until all interests have been consolidated (by communitization, unitization, forced-pooling, or otherwise) or until a non-standard unit, eliminating such interest, has been approved by the Division.



OPERATOR CERTIFICATION

I hereby certify that the information contained herein is true and complete to the best of my knowledge and belief.

Signature

Printed Name

R. D. MARIOTT

Position

DIVISION SURVEYOR

Company

TEXACO E & P

Date

December 16, 1993

SURVEYOR CERTIFICATION

I hereby certify that the well location shown on this plat was plotted from field notes of actual surveys made by me or under my supervision, and that the same is true and correct to the best of my knowledge and belief.

December 16, 1993

Date Surveyed

Signature & Seal of
Professional Surveyor

Certificate No.

4882

0 330 660 990 1320 1650 1980 2310 2640 2000 1500 1000 500 0

Submit to Appropriate
District Office
State Lease - 4 copies
Fee Lease - 3 copies

State of New Mexico
Energy, Minerals and Natural Resources Department

Form C-102
Revised 1-1-89

OIL CONSERVATION DIVISION

P.O. Box 2088
Santa Fe, New Mexico 87504-2088

DISTRICT I
P.O. Box 1980, Hobbs, NM 88240

DISTRICT II
P.O. Drawer DD, Artesia, NM 88210

DISTRICT III
1000 Rio Brazos Rd., Aztec, NM 87410

WELL LOCATION AND ACREAGE DEDICATION PLAT
All Distances must be from the outer boundaries of the section

Operator TEXACO EXPLORATION & PRODUCTION			Lease WEST DOLLARHIDE DRINKARD UNIT		Well No. 143
Unit Letter H	Section 30	Township 24 SOUTH	Range 38 EAST	County NMPM	LEA
Actual Footage Location of Well: 1750 feet from the NORTH line and 150 feet from the EAST line					
Ground level Elev. 3189'	Producing Formation (ABO 8) TUBB DRINKARD(DRINKARD)		Pool DOLLARHIDE TUBB DRINKARD		Dedicated Acreage: 40 Acres

- Outline the acreage dedicated to the subject well by colored pencil or hatchure marks on the plat below.
- If more than one lease is dedicated to the well, outline each and identify the ownership thereof (both as to working interest and royalty).
- If more than one lease of different ownership is dedicated to the well, have the interest of all owners been consolidated by communitization, unitization, force-pooling, etc.?
☐ Yes ☐ No If answer is "yes" type of consolidation **UNITIZATION**
If answer is "no" list the owners and trust descriptions which have actually been consolidated. (Use reverse side of this form if necessary.)
No allowable will be assigned to the well until all interests have been consolidated (by communitization, unitization, forced-pooling, or otherwise) or until a non-standard unit, eliminating such interest, has been approved by the Division.

NOTE: WELL #14 BEARS 898'
NE OF LOC.

1750'
150'

OPERATOR CERTIFICATION

I hereby certify that the information contained herein is true and complete to the best of my knowledge and belief.

Signature
R.D. Marriott
Printed Name
R.D. MARIOTT
Position
DIVISION SURVEYOR
Company
TEXACO E & P
Date
December 16, 1993

SURVEYOR CERTIFICATION

I hereby certify that the well location shown on this plat was plotted from field notes of actual surveys made by me or under my supervision, and that the same is true and correct to the best of my knowledge and belief. **December 16, 1993**

Date Surveyed
Signature & Seal of Professional Surveyor
[Signature]
Certificate No.
4882

0 330 660 990 1320 1650 1980 2310 2640 2000 1500 1000 500 0

Submit to Appropriate
District Office
State Lease - 4 copies
Fee Lease - 3 copies

State of New Mexico
Energy, Minerals and Natural Resources Department

Form C-102
Revised 1-1-89

OIL CONSERVATION DIVISION

P.O. Box 2088

Santa Fe, New Mexico 87504-2088

DISTRICT I

P.O. Box 1980, Hobbs, NM 88240

DISTRICT II

P.O. Drawer DD, Artesia, NM 88210

DISTRICT III

1000 Rio Brazos Rd., Aztec, NM 87410

WELL LOCATION AND ACREAGE DEDICATION PLAT

All Distances must be from the outer boundaries of the section

Operator TEXACO EXPLORATION & PRODUCTION			Lease WEST DOLLARHIDE DRINKARD UNIT		Well No. 144
Unit Letter J	Section 32	Township 24 SOUTH	Range 38 EAST	County NMPM LEA	
Actual Footage Location of Well: 1400 feet from the SOUTH line and 1880 feet from the EAST line					
Ground level Elev. 3186'	Producing Formation (ABO &) TUBB DRINKARD(DRINKARD)		Pool DOLLARHIDE TUBB DRINKARD		Dedicated Acreage: 40 Acres

1. Outline the acreage dedicated to the subject well by colored pencil or lacquer marks on the plat below.

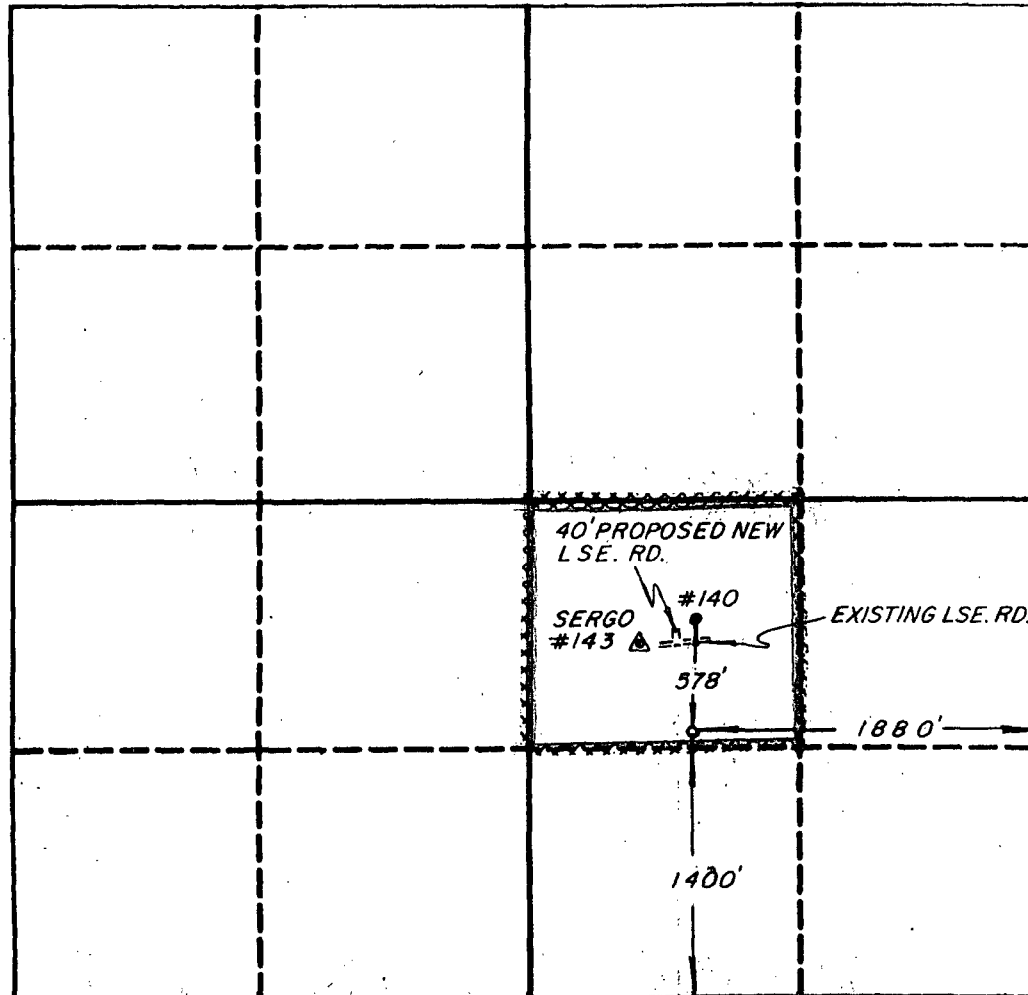
2. If more than one lease is dedicated to the well, outline each and identify the ownership thereof (both as to working interest and royalty).

3. If more than one lease of different ownership is dedicated to the well, have the interest of all owners been consolidated by communitization, unitization, force-pooling, etc.?

☒ Yes ☐ No If answer is "yes" type of consolidation **UNITIZATION**

If answer is "no" list the owners and tract descriptions which have actually been consolidated. (Use reverse side of this form if necessary.)

No allowable well be assigned to the well until all interests have been consolidated (by communitization, unitization, forced-pooling, or otherwise) or until a non-standard unit, eliminating such interest, has been approved by the Division.



OPERATOR CERTIFICATION

I hereby certify that the information contained herein is true and complete to the best of my knowledge and belief.

Signature
R.D. Marriott

Printed Name
R. D. MARIOTT

Position
DIVISION SURVEYOR

Company
TEXACO E & P

Date
December 16, 1993

SURVEYOR CERTIFICATION

I hereby certify that the well location shown on this plat was plotted from field notes of actual surveys made by me or under my supervision, and that the same is true and correct to the best of my knowledge and belief.

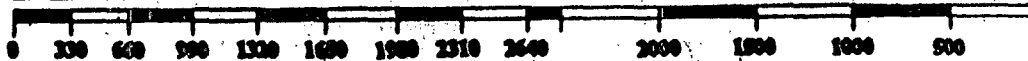
Date
December 16, 1993

Date Surveyed

Signature & Seal of
Professional Surveyor

[Signature]

Certificate No.
4882



Submit to Appropriate
District Office
State Lease - 4 copies
Fee Lease - 3 copies

State of New Mexico
Energy, Minerals and Natural Resources Department

Form C-102
Revised 1-1-89

OIL CONSERVATION DIVISION

P.O. Box 2088
Santa Fe, New Mexico 87504-2088

DISTRICT I
P.O. Box 1980, Hobbs, NM 88240

DISTRICT II
P.O. Drawer DD, Artesia, NM 88210

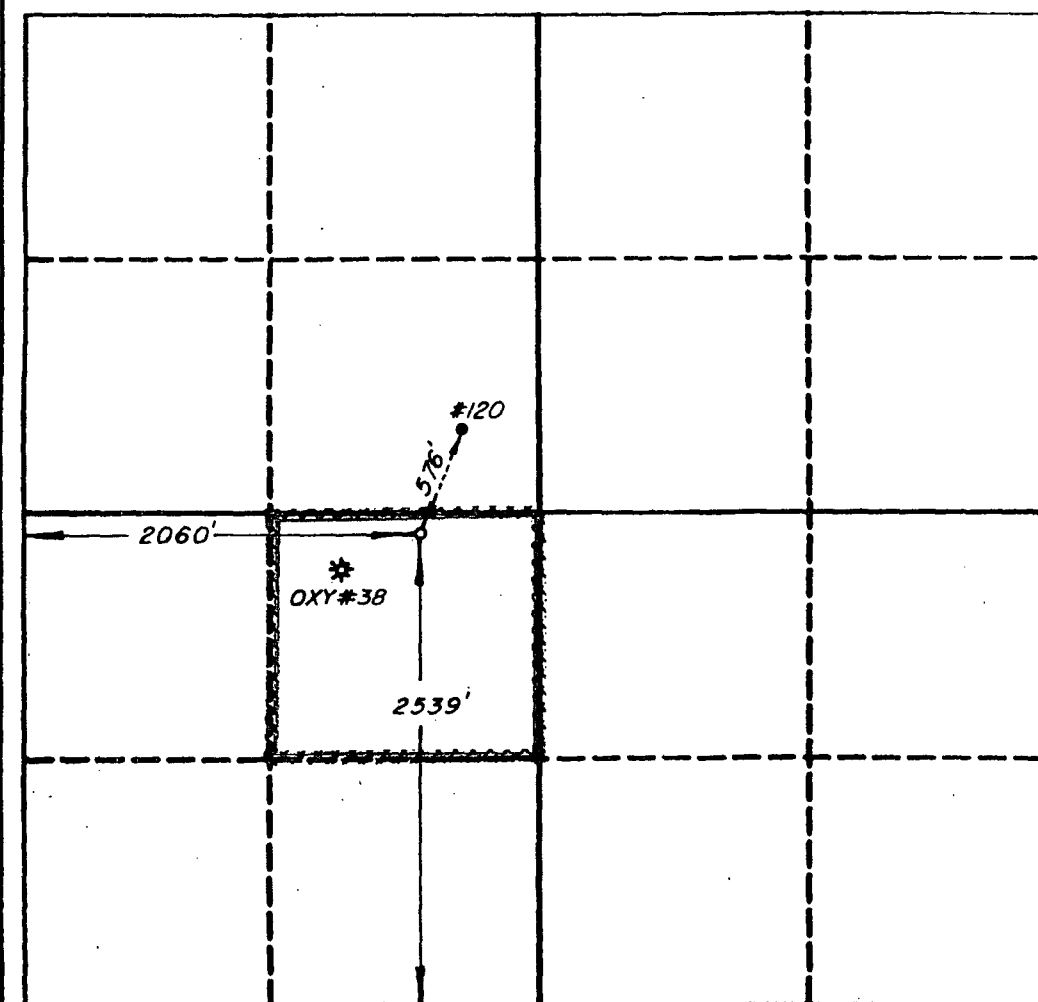
DISTRICT III
1000 Elia Avenue Rd., Alamo, NM 87410

WELL LOCATION AND ACREAGE DEDICATION PLAT

All Distances must be from the outer boundaries of the section

Operator TEXACO EXPLORATION & PRODUCTION			Lease WEST DOLLARHIDE DRINKARD UNIT		Well No. 145
Unit Letter K	Section 32	Township 24 SOUTH	Range 38 EAST	County NMPM LEA	
Actual Footage Location of Well: 2539 feet from the SOUTH line and 2060 feet from the WEST line					
Ground level Elev. 3172'	Producing Formation (ABO &) TUBB DRINKARD(DRINKARD)		Pool DOLLARHIDE TUBB DRINKARD		Dedicated Acreage: 40 Acres

- Outline the acreage dedicated to the subject well by colored pencil or inkline marks on the plat below.
- If more than one lease is dedicated to the well, outline each and identify the ownership thereof (both as to working interest and royalty).
- If more than one lease of different ownership is dedicated to the well, have the interest of all owners been consolidated by communitization, unitization, force-pooling, etc.?
☒ Yes ☐ No If answer is "yes" type of consolidation UNITIZATION
If answer is "no" list the owners and trust descriptions which have actually been consolidated. (Use reverse side of this form if necessary).
No allowable will be assigned to the well until all interests have been consolidated (by communitization, unitization, force-pooling, or otherwise) or until a non-standard well, eliminating such interest, has been approved by the Division.



OPERATOR CERTIFICATION

I hereby certify that the information contained herein is true and complete to the best of my knowledge and belief.

Signature
R. D. Mariott
Printed Name

R. D. MARIOTT

Position
DIVISION SURVEYOR

Company
TEXACO E & P

Date
December 16, 1993

SURVEYOR CERTIFICATION

I hereby certify that the well location shown on this plat was plotted from field notes of actual surveys made by me or under my supervision, and that the same is true and correct to the best of my knowledge and belief.

December 16, 1993

Date Surveyed

Signature & Seal of
Professional Surveyor

John B. Harris
Certificate No.

4882



OIL CONSERVATION DIVISION

P.O. Box 2088
Santa Fe, New Mexico 87504-2088

DISTRICT I
P.O. Box 1980, Hobbs, NM 88240

DISTRICT II
P.O. Drawer DD, Artesia, NM 88210

DISTRICT III
1000 Elia Avenue Rd., Aztec, NM 87410

WELL LOCATION AND ACREAGE DEDICATION PLAT

All Distances must be from the outer boundaries of the section

Operator TEXACO EXPLORATION & PRODUCTION			Unit WEST DOLLARHIDE DRINKARD UNIT		Well No. 146
Unit Letter C	Section 32	Township 24 SOUTH	Range 38 EAST	NMNM	County LEA

Actual Footage Location of Well: 810 feet from the NORTH line and 2096 feet from the WEST line					
Ground level Elev. 3178'	Producing Formation (ABO &) TUBB DRINKARD(DRINKARD)		Pool DOLLARHIDE TUBB DRINKARD		Dedicated Acreage: 4.0 Acres

1. Outline the acreage dedicated to the subject well by colored pencil or business marks on the plat below.

2. If more than one lease is dedicated to the well, outline each and identify the ownership thereof (both as to working interest and royalty).

3. If more than one lease of different ownership is dedicated to the well, have the interest of all owners been consolidated by communitization, unitization, force-pooling, etc.?

☒ Yes

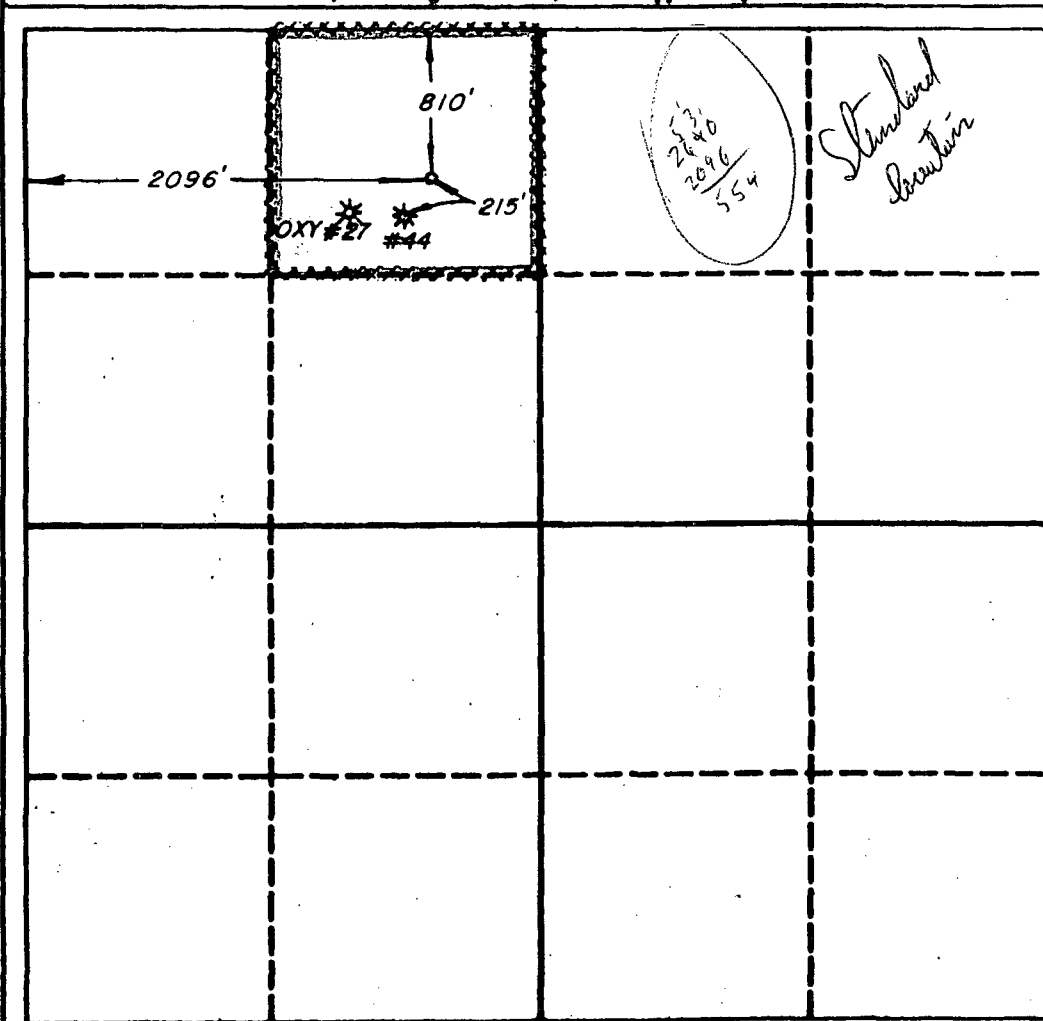
☐ No

If answer is "yes" type of consolidation

UNITIZATION

If answer is "no" list the owners and west descriptions which have actually been consolidated. (Use reverse side of this form if necessary).

No allowable will be assigned to the well until all interests have been consolidated (by communitization, unitization, force-pooling, or otherwise) or until a non-standard unit, encompassing such interest, has been approved by the Division.



OPERATOR CERTIFICATION

I hereby certify that the information contained herein is true and complete to the best of my knowledge and belief.

Signature

R.D. Mariott

Printed Name

R. D. MARIOTT

Position

DIVISION SURVEYOR

Company

TEXACO E & P

Date

December 16, 1993

SURVEYOR CERTIFICATION

I hereby certify that the well location shown on this plat was plotted from field notes of actual surveys made by me or under my supervision, and that the same is true and correct to the best of my knowledge and belief.

December 16, 1993

Date Surveyed

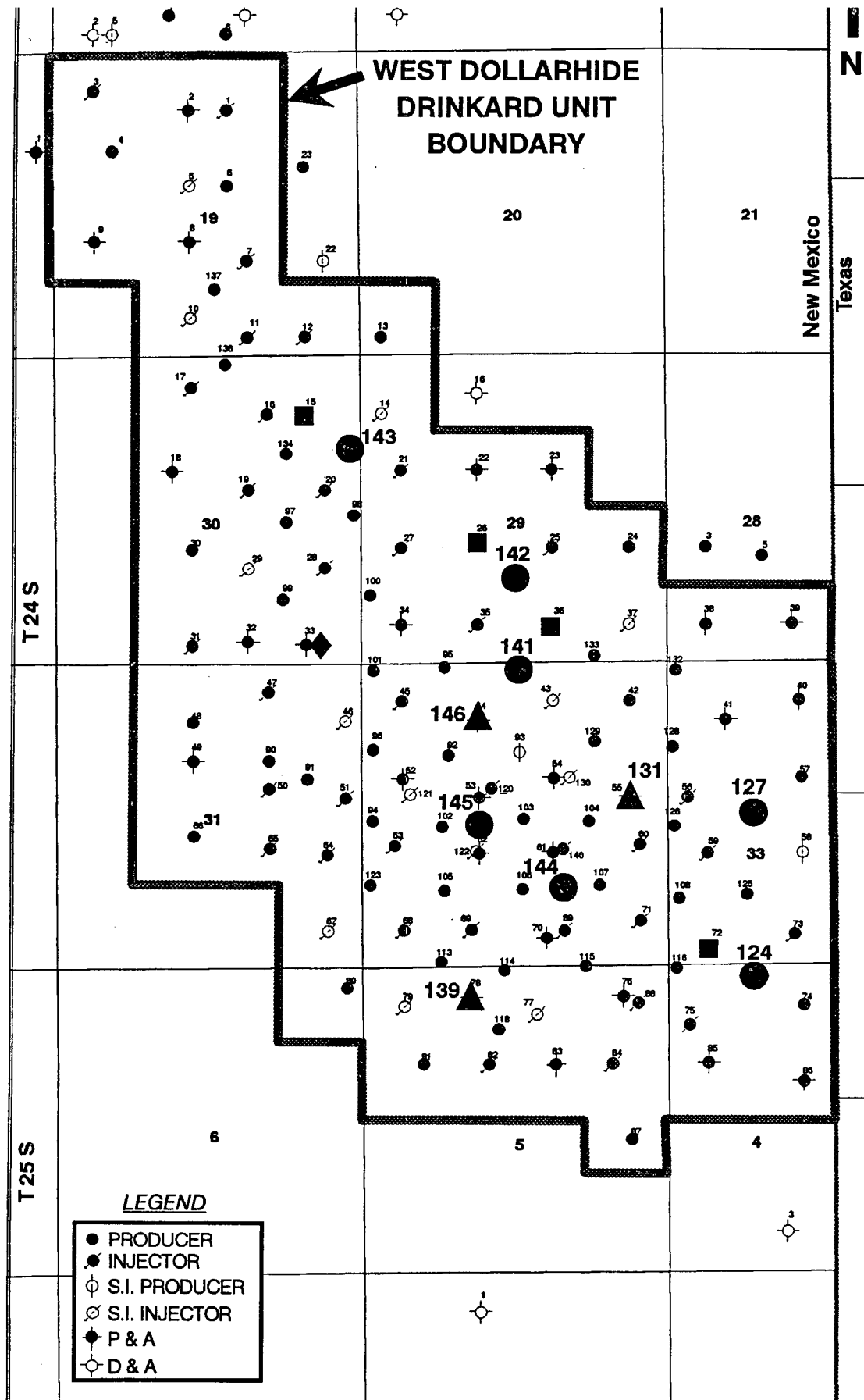
Signature & Seal of
Professional Surveyor

Sub. L. L. L. L.

Certificate No.

4882

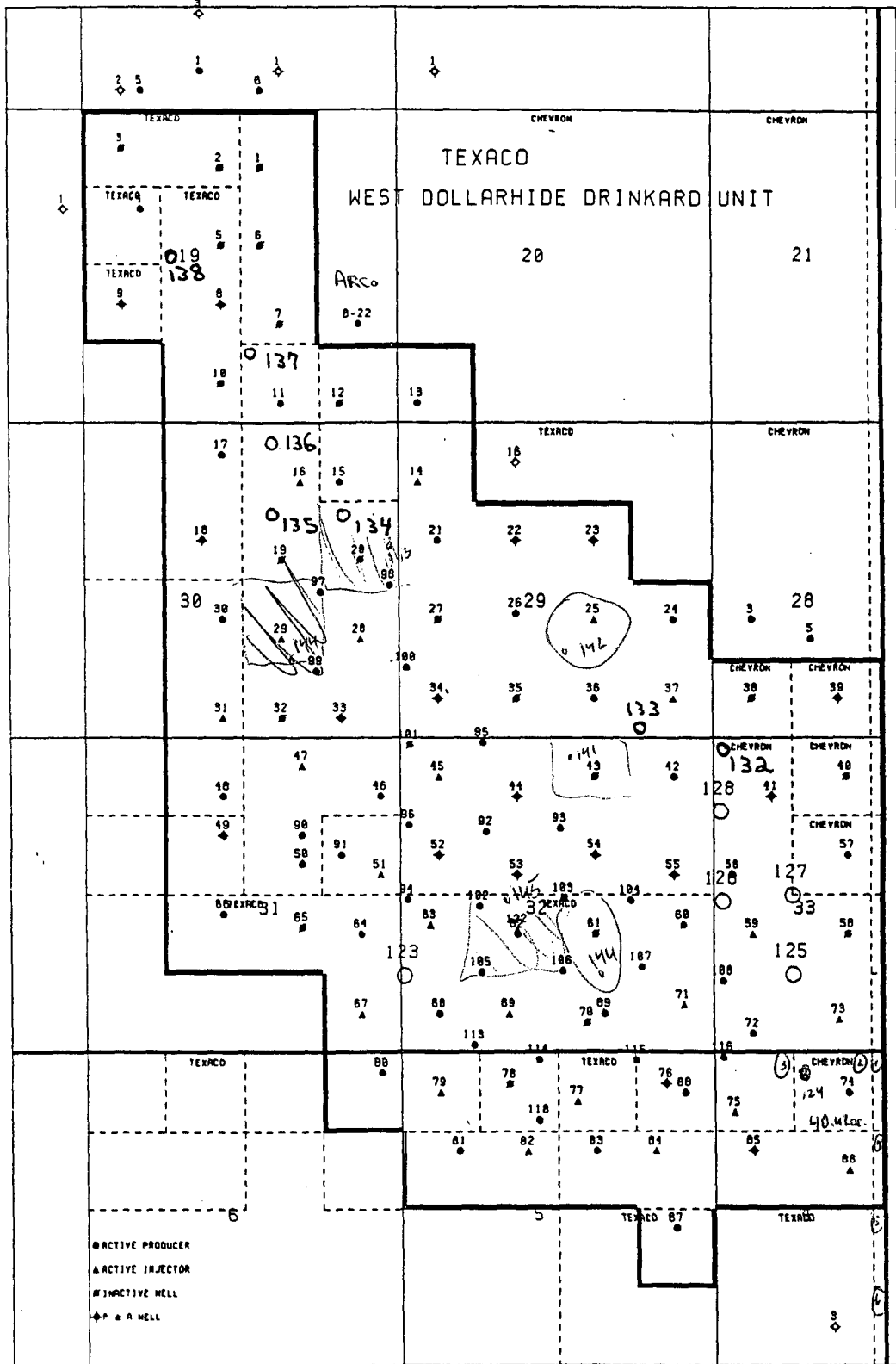
0 200 400 600 800 1000 1200 1400 1600 1800 2000 2200 2400 2600 2800 3000 0



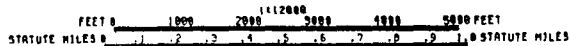
R 38 E

T 24 S

T 25 S



○ PROPOSED LOCATION



TEXACO E & P INC.		
MIDLAND	TEXAS	U.S.A.
WEST DOLLARHIDE DRINKARD UNIT		
LEA COUNTY, NEW MEXICO		
BASE MAP		
TUBB/DRINKARD/ABO WELLS ONLY		
J. F. GIBBS		
38-APR-93		

Submit to Appropriate
District Office
State Lease - 6 copies
Fee Lease - 5 copies

State of New Mexico
Energy, Minerals and Natural Resources Department

Form C-101
Revised 1-1-89

DISTRICT I
P.O. Box 1980, Hobbs, NM 88240

DISTRICT II
P.O. Drawer DD, Artesia, NM 88210

DISTRICT III
1000 Rio Brazos Rd., Aztec, NM 87410

OIL CONSERVATION DIVISION

P.O. Box 2088
Santa Fe, New Mexico 87504-2088

API NO. (assigned by OCD on New Wells)

5. Indicate Type of Lease

STATE ☒ FEE ☐

6. State Oil & Gas Lease No.

B-9311

APPLICATION FOR PERMIT TO DRILL, DEEPEN, OR PLUG BACK

1a. Type of Work:

DRILL ☒ RE-ENTER ☐ DEEPEN ☐ PLUG BACK ☐

b. Type of Well:

OIL WELL ☒ GAS WELL ☐ OTHER ☐ SINGLE ZONE ☒ MULTIPLE ZONE ☐

2. Name of Operator

TEXACO EXPLORATION AND PRODUCTION INC.

3. Address of Operator

P. O. Box 3109, Midland, Texas 79702

7. Lease Name or Unit Agreement Name

WEST DOLLARHIDE DRINKARD UNIT

8. Well No.

145

9. Pool name or Wildcat

DOLLARHIDE TUBB DRINKARD

4. Well Location

Unit Letter K : 2539 Feet From The SOUTH Line and 2060 Feet From The WEST Line

Section 32 Township 24-SOUTH Range 38-EAST NMPM LEA County

10. Proposed Depth

7455'

11. Formation

DRINKARD

12. Rotary or C.T.

ROTARY

13. Elevations (Show whether DF, RT, GR, etc.)

GR-3172'

14. Kind & Status Plug. Bond

BLANKET

15. Drilling Contractor

TO BE SELECTED

16. Approx. Date Work will start

FEBRUARY 1, 1994

17.

PROPOSED CASING AND CEMENT PROGRAM

SIZE OF HOLE	SIZE OF CASING	WEIGHT PER FOOT	SETTING DEPTH	SACKS OF CEMENT	EST. TOP
17	13 3/8	48#	40'	REDI-MIX	SURFACE
12 1/4	8 5/8	24#	1180'	600	SURFACE
7 7/8	5 1/2	15.5# & 17#	7455'	2000	SURFACE

CEMENTING PROGRAM: CONDUCTOR - REDIMIX.

SURFACE CASING - 400 SX CLASS C w/ 4% GEL & 2% CaCl₂ (13.5ppg, 1.74cf/s, 9.1gw/s). F/B 200 SX CLASS C w/ 2% CaCl₂ (14.8ppg, 1.32cf/s, 6.3gw/s).

PRODUCTION CASING - 1500 SX 35/65 POZ CLASS H w/ 6% GEL, 5% SALT & 1/4# FLOCELE (12.8ppg, 1.94cf/s, 10.4gw/s). F/B 500 SX CLASS H (15.6ppg, 1.18cf/s, 5.2gw/s).

OXY OPERATES A WELL IN THIS QUARTER QUARTER SECTION AND HAS BEEN FURNISHED A COPY OF THIS APPLICATION.

UNORTHODOX LOCATION GRANTED 12-28-93 UNDER ADMINISTRATIVE ORDER NSL-3338 (COPY ATTACHED).

IN ABOVE SPACE DESCRIBE PROPOSED PROGRAM: IF PROPOSAL IS TO DEEPEN OR PLUG BACK, GIVE DATA ON PRESENT PRODUCTIVE ZONE AND PROPOSED NEW PRODUCTIVE ZONE. GIVE BLOWOUT PREVENTER PROGRAM, IF ANY.

I hereby certify that the information above is true and complete to the best of my knowledge and belief.

SIGNATURE C. P. Basham / cwl TITLE DRILLING OPERATIONS MANAGER DATE 01-04-94

TYPE OR PRINT NAME C. P. BASHAM

TELEPHONE NO. (915) 688-4620

(This space for State Use)

APPROVED BY [Signature] TITLE DISTRICT I SUPERVISOR DATE JAN 07 1994

CONDITIONS OF APPROVAL, IF ANY:



STATE OF NEW MEXICO

ENERGY, MINERALS AND NATURAL RESOURCES DEPARTMENT

OIL CONSERVATION DIVISION

BRUCE KING
GOVERNORANITA LOCKWOOD
CABINET SECRETARY

December 28, 1993

POST OFFICE BOX 2088
STATE LAND OFFICE BUILDING
SANTA FE, NEW MEXICO 87504
(505) 827-5800Texaco Exploration and Production, Inc.
P.O. Box 3109
Midland, TX 79702

Attention: C.P. Basham

Administrative Order NSL-3338

Dear Mr. Basham:

Reference is made to your application dated December 20, 1993 for six unorthodox oil well locations for the purpose of completing an efficient injection/production pattern within your Skelly West Dollarhide Drinkard Waterflood Project Area, established by Division Order No. R-3768, dated May 28, 1969.

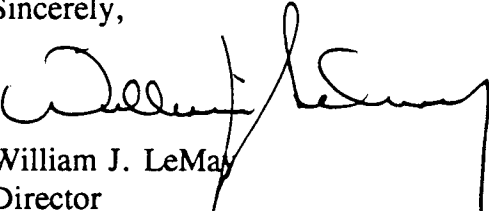
The following described wells are to be located in Townships 24 and 25 South, Range 38 East, NMPM, Dollarhide Tubb-Drinkard Pool, West Dollarhide Drinkard Unit Area, Lea County, New Mexico:

<i>Well No.</i>	<i>Footage Location</i>	<i>Unit</i>	<i>Section</i>	<i>Dedicated 40-Acre Tract</i>
124	300' FNL - 1350' FWL	C	4-25S-38E	Lot 2 (40.42 acres)
141	100' FNL - 2580' FEL	B	32-24S-38E	NW/4 NE/4
142	1400' FSL -2580' FEL	J	29-24S-38E	NW/4 SE/4
143	1750' FNL - 150' FEL	H	30-24S-38E	SE/4 NE/4
144	1400' FSL - 1880' FEL	J	32-24S-38E	NW/4 SE/4
145	2539' FSL - 2060' FWL	K	32-24S-38E	NE/4 SW/4

Administrative Order NSL-3338
Texaco Exploration and Production, Inc.
December 28, 1993
Page 2

By the authority granted me under the provisions of General Rule 104 F.(1), the above-described unorthodox oil well locations are hereby approved.

Sincerely,



William J. LeMay
Director

WJL/MES/amg

cc: Oil Conservation Division - Hobbs
US Bureau of Land Management - Carlsbad
NM State Land Office - Santa Fe



STATE OF NEW MEXICO
ENERGY, MINERALS AND NATURAL RESOURCES DEPARTMENT
OIL CONSERVATION DIVISION



BRUCE KING
GOVERNOR

ANITA LOCKWOOD
CABINET SECRETARY

December 28, 1993

POST OFFICE BOX 2088
STATE LAND OFFICE BUILDING
SANTA FE, NEW MEXICO 87504
(505) 827-5800

Texaco Exploration & Production, Inc.
P.O. Box 3109
Midland, TX 79702

Attention: C.P. Basham

*RE: Application for seven unorthodox oil well
locations, Skelly West Dollarhide Drinkard
Waterflood Project, Lea County, New Mexico.*

Dear Mr. Basham:

Subsequent to my initial review of your application dated December 20, 1993 for seven unorthodox oil well locations within the Skelly West Dollarhide Drinkard Waterflood Project Area. It was found that the location of the No. 146 well, to be drilled 810 feet from the North line and 2096 feet from the West line (Unit C) of Section 32, Township 24 South, Range 38 East, NMPM, Dollarhide Tubb-Drinkard Pool, West Dollarhide Drinkard Unit Area, Lea County, New Mexico, is considered standard.

Therefore no action for this well is necessary from this office. Any order issued for said application will omit the West Dollarhide Drinkard Unit Well No. 146.

Sincerely,

Michael E. Stogner
Chief Hearing Officer

MES/amg

cc: Oil Conservation Division - Hobbs
NM State Land Office - Santa Fe