

NSL-NSP

OIL CONSERVATION DIVISION  
RECEIVED



**WALSH**

ENGINEERING & PRODUCTION CORP.

Petroleum Engineering Consulting  
Lease Management  
Contract Pumping

7415 East Main  
Farmington, New Mexico 87402  
(505) 327-4892

95 MAR 27 PM 8 52

March 16, 1995

Mr. William J. LeMay  
New Mexico Oil Conservation Division  
P.O. Box 2088  
Santa Fe, NM 87504-2088

Re: Non-Standard Gas Unit  
Northwest Pipeline Corporation  
Rosa Unit #148  
445' FSL, 2460' FEL  
Section 2, T31N R6W  
Rio Arriba, NM  
Basin Dakota and Blanco MV

Dear Mr. LeMay,

This is a request on behalf of Northwest Pipeline Corporation for administrative approval for a non-standard gas unit in the Basin Dakota and Blanco Mesa Verde pool for the referenced well. The proposed spacing unit is all of Section 2, T31N, R6W, which is 356.20 acres due to a variation in the legal subdivision of the U.S. Public Land Surveys.

As the Unit Operator of the Rosa Unit, Northwest Pipeline is the only offset operator. Attached is a plat indicating the well location and proposed spacing unit.

Thank you for your consideration and approval of this application. If you have any questions please do not hesitate to call upon me.

Sincerely,

Paul C. Thompson, P.E.  
President, Walsh Engineering

cc: Mark McCallister, WPC  
NMOCD Aztec NM  
BLM Farmington NM

District I  
PO Box 1980, Hobbs, NM 88241-1980  
District II  
PO Drawer DD, Artesia, NM 88211-0719  
District III  
1000 Rio Brazos Rd., Aztec, NM 87410  
District IV  
PO Box 2088, Santa Fe, NM 87504-2088

State of New Mexico  
Energy, Minerals & Natural Resources Department

OIL CONSERVATION DIVISION  
PO Box 2088  
Santa Fe, NM 87504-2088

Form C-10  
Revised February 21, 1999  
Instructions on back  
Submit to Appropriate District Office  
State Lease - 4 Copies  
Fee Lease - 3 Copies

☐ AMENDED REPORT

WELL LOCATION AND ACREAGE DEDICATION PLAT

API Number		Pool Code	Pool Name
		72319	BLANCO MESA VERDE
Property Code	Property Name		Well Number
008400	Rosa Unit Com		148
OGRID No.	Operator Name		Elevation
16189	Northwest Pipeline Production		6326'

10 Surface Location

UL or lot no.	Section	Township	Range	Lot Idn	Feet from the	North/South line	Feet from the	East/West line	County
0	2	31 N	6 W		445	South	2460	East	R.A.

11 Bottom Hole Location If Different From Surface

UL or lot no.	Section	Township	Range	Lot Idn	Feet from the	North/South line	Feet from the	East/West line	County

Dedicated Acres	Joint or Infill	Consolidation Code	Order No.
356.2	Y	U	

NO ALLOWABLE WILL BE ASSIGNED TO THIS COMPLETION UNTIL ALL INTERESTS HAVE BEEN CONSOLIDATED  
OR A NON-STANDARD UNIT HAS BEEN APPROVED BY THE DIVISION

16					17 OPERATOR CERTIFICATION
				I hereby certify that the information contained herein is true and complete to the best of my knowledge and belief.	
				Signature <u>Paul C. Thompson</u>	
				Printed Name <u>Paul C. Thompson, PE (AGENT)</u>	
				Title <u>President</u>	
				Date <u>3/16/95</u>	
				18 SURVEYOR CERTIFICATION	
				I hereby certify that the well location shown on this plat was plotted from field notes of actual surveys made by me or under my supervision, and that the same is true and correct to the best of my belief.	
				Date of Survey <u>3-14-95</u>	
				Signature and Seal of Professional Surveyor	
				Certificate Number	

District I  
PO Box 1980, Hobbs, NM 88241-1980  
District II  
PO Drawer DD, Artesia, NM 88211-0719  
District III  
1000 Rio Brazos Rd., Aztec, NM 87410  
District IV  
PO Box 2088, Santa Fe, NM 87504-2088

State of New Mexico  
Energy, Minerals & Natural Resources Department

OIL CONSERVATION DIVISION  
PO Box 2088  
Santa Fe, NM 87504-2088

Form C-10  
Revised February 21, 199  
Instructions on back  
Submit to Appropriate District Office  
State Lease - 4 Copies  
Fee Lease - 3 Copies

☐ AMENDED REPORT

WELL LOCATION AND ACREAGE DEDICATION PLAT

API Number	Pool Code 71599	Pool Name BASIN DAKOTA
Property Code 008400	Property Name Rosa Unit Com	Well Number 148
OGRID No. 16189	Operator Name Northwest Pipeline Production	Elevation 6326'

<sup>10</sup> Surface Location

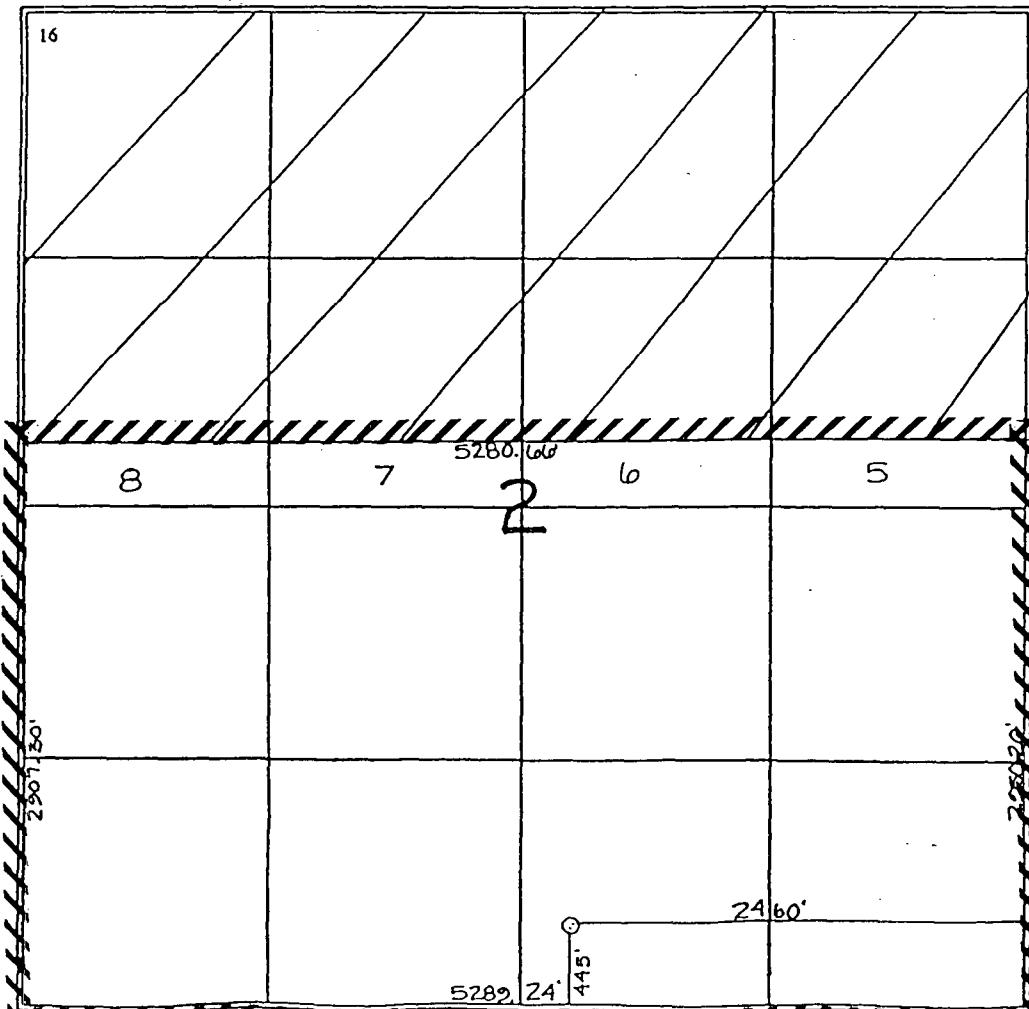
UL or lot no. 0	Section 2	Township 31 N	Range 6 W	Lot Idn	Feet from the 445	North/South line South	Feet from the 2460	East/West line East	County R.A.
--------------------	--------------	------------------	--------------	---------	----------------------	---------------------------	-----------------------	------------------------	----------------

<sup>11</sup> Bottom Hole Location If Different From Surface

UL or lot no.	Section	Township	Range	Lot Idn	Feet from the	North/South line	Feet from the	East/West line	County
---------------	---------	----------	-------	---------	---------------	------------------	---------------	----------------	--------

Dedicated Acres 356.2	Joint or Infill Y	Consolidation Code U	Order No.
--------------------------	----------------------	-------------------------	-----------

NO ALLOWABLE WILL BE ASSIGNED TO THIS COMPLETION UNTIL ALL INTERESTS HAVE BEEN CONSOLIDATED  
OR A NON-STANDARD UNIT HAS BEEN APPROVED BY THE DIVISION



<sup>17</sup> OPERATOR CERTIFICATION

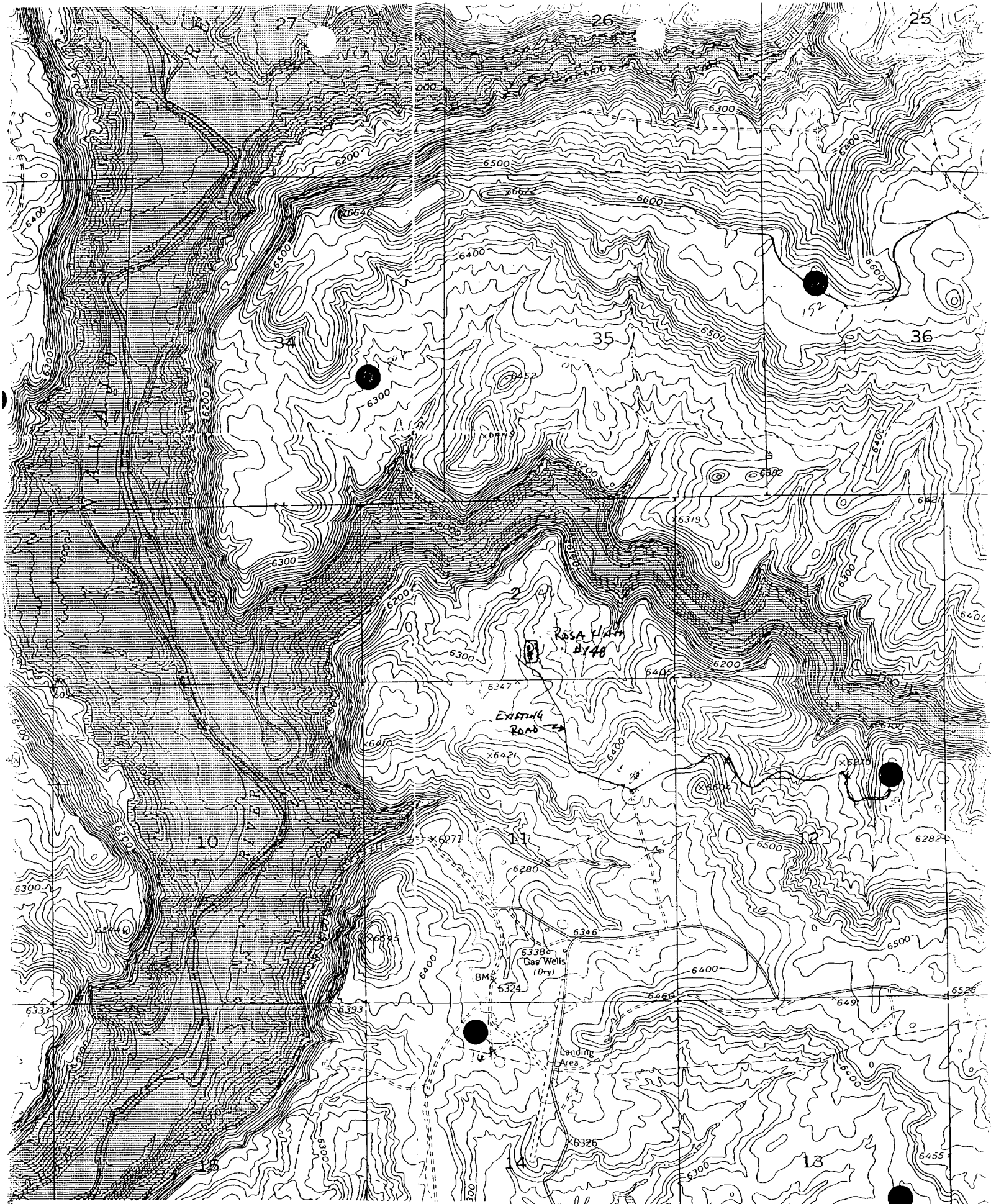
I hereby certify that the information contained herein is true and complete to the best of my knowledge and belief

*Paul C. Thompson*  
Signature  
Paul C. Thompson, PE (Agent)  
Printed Name President  
Walsh Engr. & Prod. Corp.  
Title  
3/16/95  
Date

<sup>18</sup> SURVEYOR CERTIFICATION

I hereby certify that the well location shown on this plat was plotted from field notes of actual surveys made by me or under my supervision, and that the same is true and correct to the best of my belief.

3-14-95  
Date of Survey  
Signature and Seal of Professional Surveyor  
NEALE C. EDWARDS  
NEW MEXICO  
0837  
6887  
Certificate Number



PLAT #1  
NORTHWEST PIPELINE CORPORATION  
Rosa Unit #148  
445'FSL & 2460'FEL, SEC 2, T31N, R6W  
Rio Arriba County, New Mexico

CMD :  
OG6IWCM

ONGARD  
INQUIRE WELL COMPLETIONS

03/22/95 13:00:10  
OGOMES -EMGE

API Well No : 30 39 24361 Eff Date : 07-20-1990 WC Status : A  
Pool Idn : 71629 BASIN FRUITLAND COAL (GAS)  
OGRID Idn : 14538 MERIDIAN OIL INC  
Prop Idn : 14093 ROSA UNIT COM

Well No : 239  
GL Elevation: 6230

	U/L	Sec	Township	Range	North/South	East/West	Prop/Act (P/A)
	---	---	-----	-----	-----	-----	-----
B.H. Locn : N	2	31N	06W	FTG	835 F S	FTG 2510 F W	P
Lot Identifier:							
Dedicated Acre: 356.26							
Lease Type : P							
Type of consolidation (Comm, Unit, Forced Pooling - C/U/F/O) : C							

E6317: No more recs. for this api well no.

PF01 HELP	PF02	PF03 EXIT	PF04 GoTo	PF05	PF06
PF07	PF08	PF09	PF10 NEXT-WC	PF11 HISTORY	PF12 NXTREC

CMD :  
OG5SECT

ONGARD  
INQUIRE LAND BY SECTION

03/22/95 12:59:10  
OGOMES -EMGE  
PAGE NO: 1

Sec : 02 Twp : 31N Rng : 06W Section Type : NORMAL

8 8.53 CS E00289 53 05/55 WILLIAMS PRODUCTI	7 9.13 CS E00289 53 05/55 WILLIAMS PRODUCTI	6 9.25 CS E00289 53 05/55 WILLIAMS PRODUCTI	5 9.35 CS OPEN

PF01 HELP  
PF07 BKWD

PF02  
PF08 FWD

PF03 EXIT  
PF09 PRINT

PF04 GoTo  
PF10 SDIV

PF05  
PF11

PF06  
PF12

$$\begin{array}{r} 8.53 \\ + 9.13 \\ \hline 17.66 \\ + 9.25 \\ \hline 26.91 \\ + 9.35 \\ \hline 36.26 \end{array}$$

$$\begin{array}{r} 8.53 \\ + 9.13 \\ \hline 17.66 \\ + 9.25 \\ \hline 26.91 \\ + 9.35 \\ \hline 36.26 \\ + 32 \\ \hline 68.26 \end{array}$$

CMD :  
OG5SECT

ONGARD  
INQUIRE LAND BY SECTION

03/22/95 12:59:27  
OGOMES -EMGE  
PAGE NO: 2

Sec : 02 Twp : 31N Rng : 06W Section Type : NORMAL

L 40.00 CS E00289 53 05/55 WILLIAMS PRODUCTI U	K 40.00 CS E00289 53 05/55 WILLIAMS PRODUCTI U	J 40.00 CS E00289 53 05/55 WILLIAMS PRODUCTI U	I 40.00 CS E00289 53 05/55 WILLIAMS PRODUCTI U
M 40.00 CS E00289 53 05/55 WILLIAMS PRODUCTI U	N 40.00 CS E00289 53 05/55 WILLIAMS PRODUCTI U A	O 40.00 CS E00289 53 05/55 WILLIAMS PRODUCTI U	P 40.00 CS E00289 53 05/55 WILLIAMS PRODUCTI U

PF01 HELP	PF02	PF03 EXIT	PF04 GoTo	PF05	PF06
PF07 BKWD	PF08 FWD	PF09 PRINT	PF10 SDIV	PF11	PF12

**Mike Stogner**

---

**From:** Ernie Busch  
**To:** Mike Stogner  
**Subject:** WALSH ENG (NSP)  
**Date:** Tue, Mar 28, 1995 9:21AM  
**Priority:** High

ROSA UNIT #148  
445' FSL; 2460' FEL  
O-02-31N-06W

RECOMMEND: ALTHOUGH THE ACREAGE IS UNDER THE 125%, WE WILL STILL NEED AN ORDER  
BECAUSE THE PRORATION UNIT CROSSES A 1/2 SECTION LINE. RECOMMEND APPROVAL

*NSL-3507 (NSP)*