

NASSAU

Nassau Resources, Inc.
P. O. Box 809
Farmington, NM 87499-0809
(505) 326-7793 Fax: (505) 327-0859

June 30, 1995

CERTIFIED MAIL - RETURN RECEIPT REQUESTED

New Mexico Oil Conservation Division
ATTN: Mike Stogner
2040 South Pacheco
Santa Fe, New Mexico 87505

RE: Application for Non-standard Location
Nassau Resources, Inc.
Carracas Unit-PC 23 B #6
2265' FNL - 2210' FWL
Sec. 23, T32N, R4W, NMPM
Rio Arriba County, NM

Gentlemen:

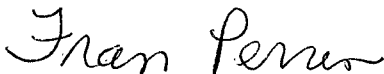
Nassau Resources, Inc., hereby requests administrative approval of a non-standard location for the captioned well based upon topographic conditions. Due to rugged terrain and private land use on the fee acreage, it is the only suitable location within our geologic target. This location for a Pictured Cliffs well was staked after consultation with the Forest Service.

Amoco Production Co., the only offsetting operator, is also a party to the unit has been notified of this application by certified mail. McHugh Companies, is an operating affiliate with Nassau Resources, Inc.

Also attached are copies of the APD, surveyor's plat, topographic and production maps.

Please contact us if anything further is required to complete this application.

Respectfully submitted,



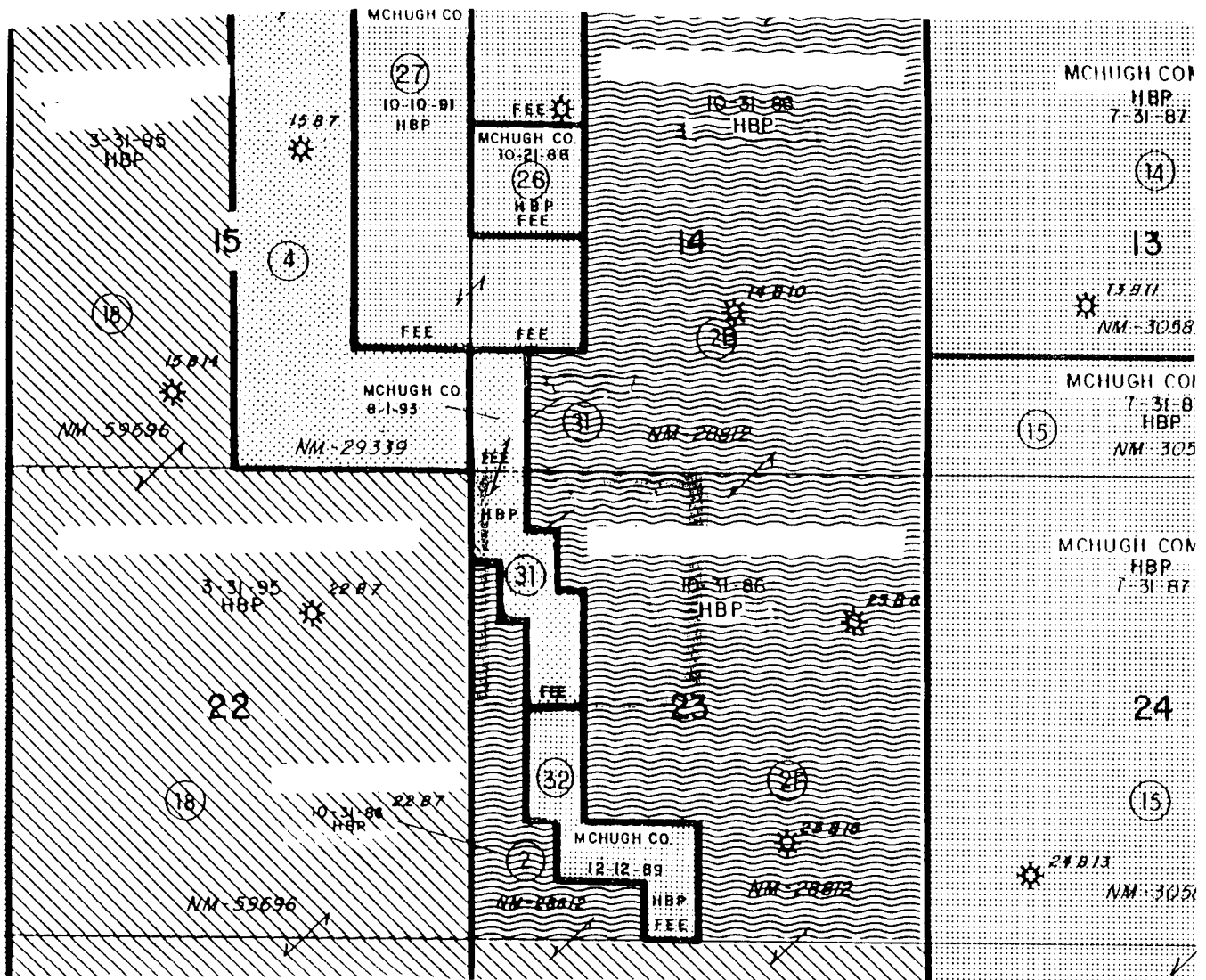
Fran Perrin
Regulatory Liaison

Attachments

XC: Ernie Busch, NMOCD, Aztec, NM
Amoco Production Co.
McHugh Companies

LEASE PLAT

Township 32 North, Range 4 West, NMPM
Rio Arriba County, New Mexico



- S/2 Section 14: Various McHugh Fee Leases - McHugh Companies 100%
NM 28812 - McHugh Companies 100%
- SE/4Section 15: Various McHugh Fee Leases - McHugh Companies 100%
NM 29339 - McHugh Companies 100%
- E/2 Section 22: NM 59696 - McHugh Companies 75% and Amoco Production 25%
- E/2 Section 23: NM 28812 - McHugh Companies 100%
- SW/4Section 23: NM 28812 - McHugh Companies 100%
Various McHugh Fee Leases - McHugh Companies 100%

McHugh Companies is an operating affiliate with Nassau Resources.

NASSAU RESOURCES, INC.
Carracas Unit-PC 23 B #6
APPLICATION FOR NON-STANDARD LOC.
Exhibit A

UNITED STATES
DEPARTMENT OF THE INTERIOR
BUREAU OF LAND MANAGEMENT

APPLICATION FOR PERMIT TO DRILL OR DEEPEN

1a. TYPE OF WORK

DRILL ☒DEEPEN ☐

b. TYPE OF WELL

OIL
WELL ☒GAS
WELL ☐OTHER ☐SINGLE
ZONE ☐MULTIPLE
ZONE ☐

2. NAME OF OPERATOR

NASSAU RESOURCES, INC.

3. ADDRESS AND TELEPHONE NO.

P O Box 809, Farmington, NM 87499-0809 505 326-7793

4. LOCATION OF WELL (Report location clearly and in accordance with any State requirements.)

At surface

2265' FNL & 2210' FWL

At proposed prod. zone

14. DISTANCE IN MILES AND DIRECTION FROM NEAREST TOWN OR POST OFFICE*

±16 miles E/SE of Arboles, CO.

10. DISTANCE FROM PROPOSED*
LOCATION TO NEAREST
PROPERTY OR LEASE LINE, FT.

430'

16. NO. OF ACRES IN LEASE

2522.12

17. NO. OF ACRES ASSIGNED
TO THIS WELL

160.0

18. DISTANCE FROM PROPOSED LOCATION*
TO NEAREST WELL, DRILLING, COMPLETED,
OR APPLIED FOR, ON THIS LEASE, FT.

2500'

19. PROPOSED DEPTH

3840'

20. ROTARY OR CABLE TOOLS

Rotary

21. ELEVATIONS (Show whether DF, RT, GR, etc.)

6610' GR, est.; 6622' DF, 6623' KB

22. APPROX. DATE WORK WILL START*

8/15/95

23.

PROPOSED CASING AND CEMENTING PROGRAM

SIZE OF HOLE	GRADE SIZE OF CASING	WEIGHT PER FOOT	SETTING DEPTH	QUANTITY OF CEMENT
12-1/4"	9-5/8"	36#	350'	210 cu. ft. to surface
8-3/4"	5-1/2"	5.5#	3900'	1281 cu. ft. to surface

Plan to drill with spud mud to set 350' of surface casing. Will then drill with water and gel-chem. mud to test the Picutred Cliffs zone at ± 3900'. Will run DIL-GR-SP and FDC-CNL-GR Caliper logs. If well appears productive, will set 5-1/2" casing at TD, cement in 1 stage, selectively perforate, frac, clean out after frac and complete with 2-7/8" tubing.

Plan to submit an application for an unorthodox location to OCD.

IN ABOVE SPACE DESCRIBE PROPOSED PROGRAM: If proposal is to deepen, give data on present productive zone and proposed new productive zone. If proposal is to drill or deepen directionally, give pertinent data on subsurface locations and measured and true vertical depths. Give blowout preventer program, if any.

24.

SIGNED

Fran Perrin

Fran Perrin

TITLE

Regulatory Liaison

DATE

6/15/95

(This space for Federal or State office use)

PERMIT NO.

APPROVAL DATE

Application approval does not warrant or certify that the applicant holds legal or equitable title to those rights in the subject loc.
CONDITIONS OF APPROVAL, IF ANY:

NASSAU RESOURCES, INC.
Carracas Unit-PC 23 B #6
APPLICATION FOR NON-STANDARD LOC.
Exhibit B

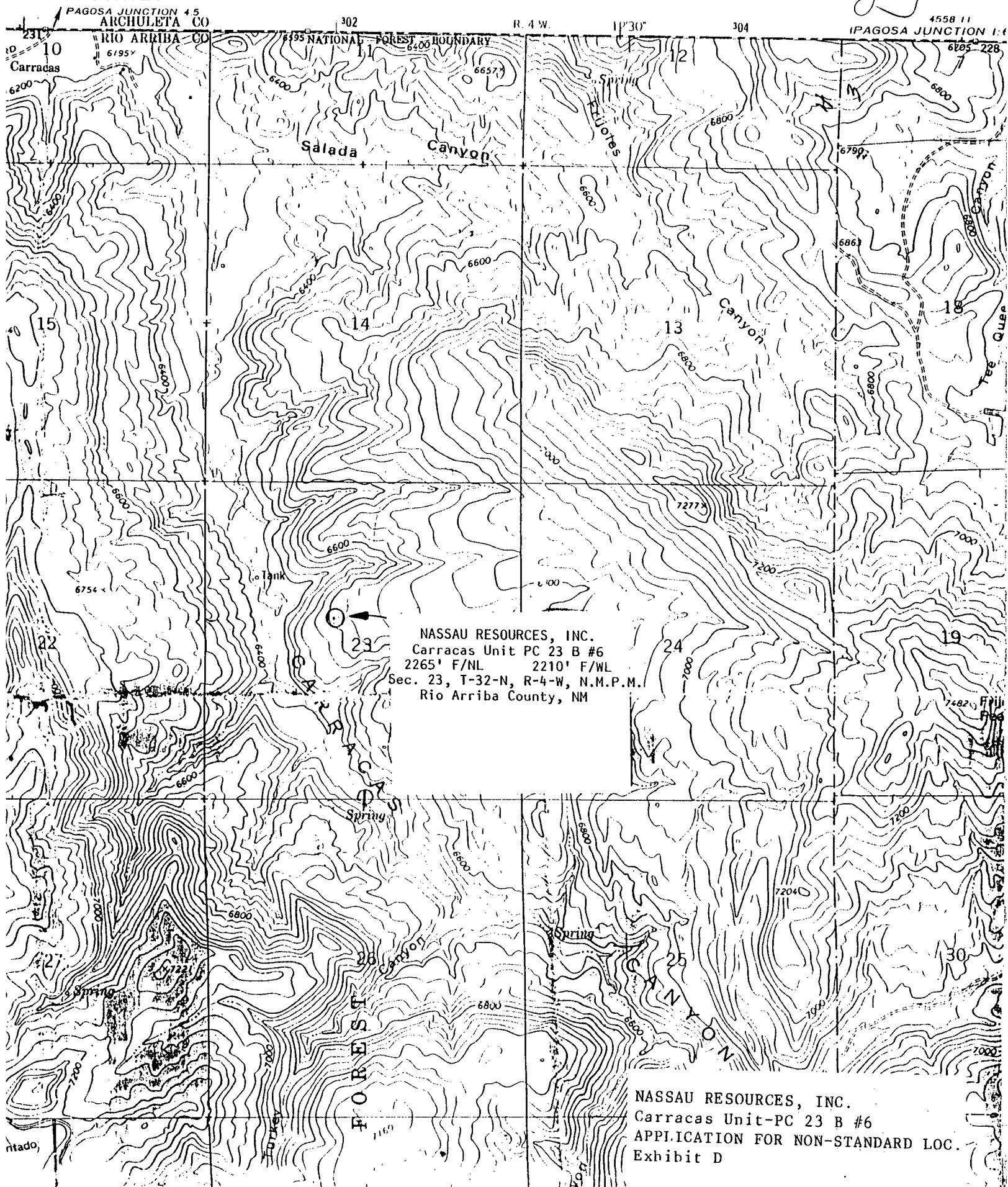
APPROVED BY

TITLE

*See Instructions On Reverse Side

Title 18 U.S.C. Section 1001, makes it a crime for any person knowingly and willfully to make to any department or agency of the United States any false, fictitious or fraudulent statements or representations or to submit any false, fictitious or fraudulent documents.

Basin Surveying



1980, Hobbs, NM 88241-1980
District II
PO Drawer DD, Artesia, NM 88211-0719
District III
1000 Rio Brazos Rd., Aztec, NM 87410
District IV
PO Box 2088, Santa Fe, NM 87504-2088

State of New Mexico
Energy, Minerals & Natural Resources Department

OIL CONSERVATION DIVISION
PO Box 2088
Santa Fe, NM 87504-2088

Form C-102
Revised February 21, 1994
Instructions on back
Submit to Appropriate District Office
State Lease - 4 Copies
Fee Lease - 3 Copies

☐ AMENDED REPORT

WELL LOCATION AND ACREAGE DEDICATION PLAT

' AIT Number	' Pool Code 96154	' Pool Name Carracas-Pictured Cliffs
' Property Code	' Property Name Carracas Unit-PC 23 B	' Well Number 6
' OGRID No.	' Operator Name Nassau Resources, Inc.	' Elevation 6610' Estimated

10 Surface Location

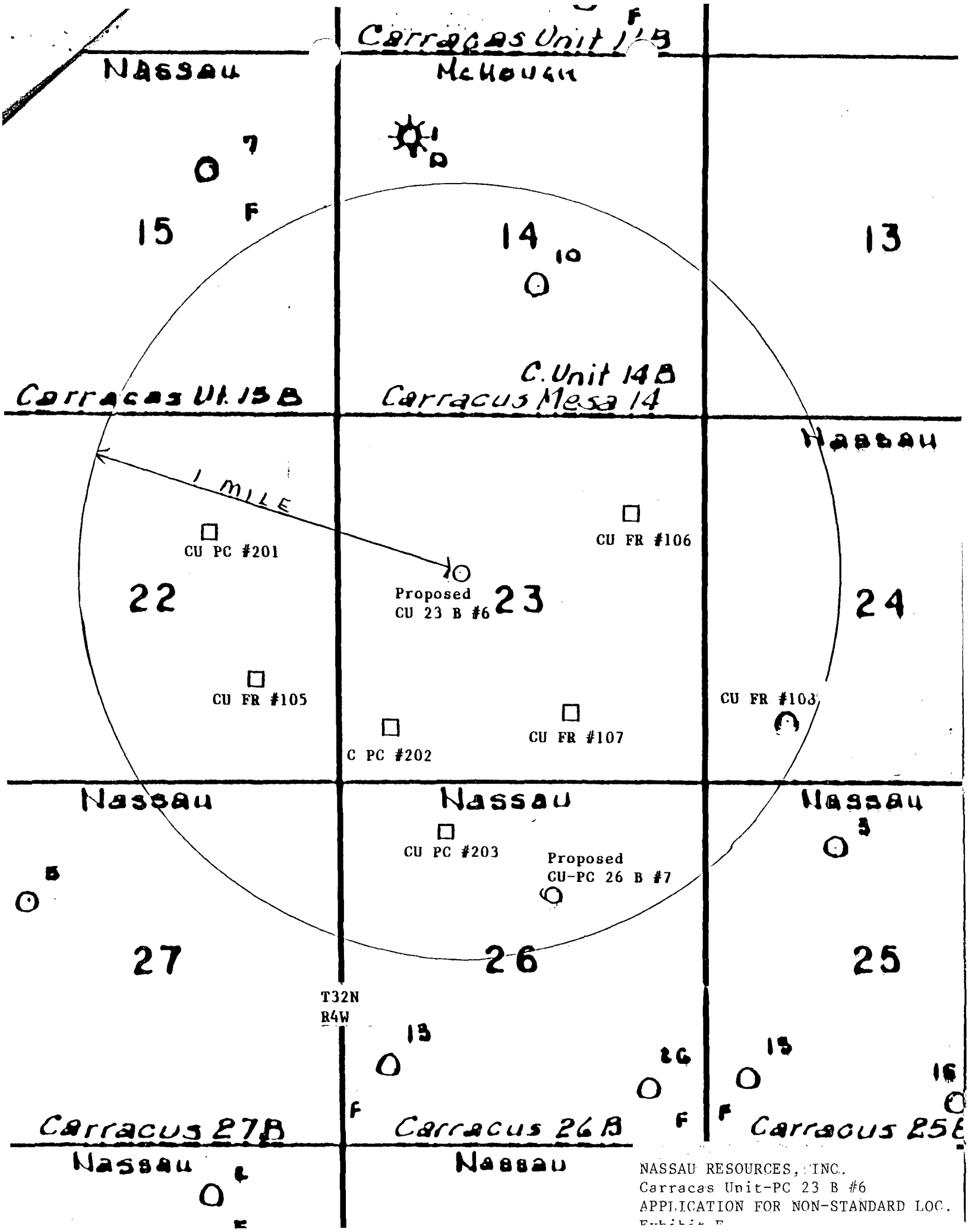
UL or lot no.	Section	Township	Range	Lot Idn	Feet from the	North/South line	Feet from the	East/West line	County
F	23	32N	4W		2265	North	2210	West	Rio Arriba

11 Bottom Hole Location If Different From Surface

UL or lot no.	Section	Township	Range	Lot Idn	Feet from the	North/South line	Feet from the	East/West line	County
12 Dedicated Acres	13 Joint or Infill	14 Consolidation Code	15 Order No.						

NO ALLOWABLE WILL BE ASSIGNED TO THIS COMPLETION UNTIL ALL INTERESTS HAVE BEEN CONSOLIDATED
OR A NON-STANDARD UNIT HAS BEEN APPROVED BY THE DIVISION

16	NM 28812 McHugh Companies 100%	2265'	2210'	Sec. 23	17 OPERATOR CERTIFICATION I hereby certify that the information contained herein is true and complete to the best of my knowledge and belief Signature Fran Perrin Printed Name Regulatory Liaison Title 6/15/95 Date
Various Fee Leases McHugh Companies 100%	NASSAU RESOURCES, INC. Carracas Unit-PC 23 B #6 APPLICATION FOR NON-STANDARD LOC. Exhibit C				18 SURVEYOR CERTIFICATION I hereby certify that the well location shown on this plat was plotted from field notes of actual surveys made by me or under my supervision, and that the same is true and correct to the best of my belief. May 23, 1995 Date of Survey Signature and Seal of Surveyor: EDGAR A. RISSHOVER NEW MEXICO 5979 Certificate Number



Mike Stogner

From: Ernie Busch
To: Mike Stogner
Subject: NASSAU RES. INC. (NSL)
Date: Tuesday, July 25, 1995 10:45AM
Priority: High

CARRACAS UNIT-PC 23 B #6
2265' FNL; 2210' FWL
F-23-32N-04W
RECOMMEND: APPROVAL

County Rio Arriba pool Carracas - Pictured Cliffs

TOWNSHIP 32 North Range 4 West NMPM

6	5	4	3	2	1	
7	8	9	10	11	12	
18	17	16	15	14	13	
19	20	21	22	23	24	
30	29	28	27	26	25	
31	32	33	34	35	36	

Description: NW 1/4 Sec. 26 (R-10178, 8-30-94)

CMD :
OG5SECT

ONGARD
INQUIRE LAND BY SECTION

08/01/95 07:27:04
OGOMES -EMDR
PAGE NO: 1

Sec : 23 Twp : 32N Rng : 04W Section Type : NORMAL

D 40.00 Fee owned	C 40.00 Federal owned	B 40.00 Federal owned	A 40.00 Federal owned
E 40.00 Fee owned	F 40.00 Federal owned	G 40.00 Federal owned	H 40.00 Federal owned A

PF01 HELP
PF07 BKWD

PF02
PF08 FWD

PF03 EXIT
PF09 PRINT

PF04 GoTo
PF10 SDIV

PF05
PF11

PF06
PF12

CMD :
OG5SECT

ONGARD
INQUIRE LAND BY SECTION

08/01/95 07:27:12
OGOMES -EMDR
PAGE NO: 2

Sec : 23 Twp : 32N Rng : 04W Section Type : NORMAL

L 40.00 Fee owned	K 40.00 Federal owned	J 40.00 Federal owned	I 40.00 Federal owned
M 40.00 Fee owned	N 40.00 Fee owned	O 40.00 Federal owned	P 40.00 Federal owned
A		A	

PF01 HELP
PF07 BKWD

PF02
PF08 FWD

PF03 EXIT
PF09 PRINT

PF04 GoTo
PF10 SDIV

PF05
PF11

PF06
PF12