

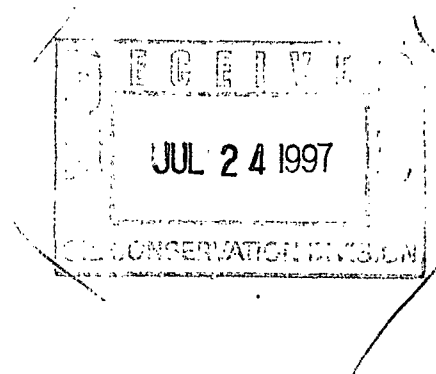
# BURLINGTON RESOURCES

SAN JUAN DIVISION

July 24, 1997

Sent Federal Express

Mr. William LeMay  
New Mexico Oil Conservation Division  
2040 South Pacheco  
Santa Fe, New Mexico 87505



Re: Hancock A #1A  
755'FSL, 1695'FEL, Section 35, T-28-N, R-9-W, San Juan County  
API # 30-045-not yet assigned

Dear Mr. LeMay:

Burlington Resources is applying for administrative approval of a non-standard location for the above location in the Mesa Verde formation. This application for the referenced location is due to terrain, the presence of archaeology and at the request of the Bureau of Land Management to minimize new surface disturbance.

The following attachments are for your review:

1. Application for Permit to Drill.
2. Completed C-102 at referenced location.
3. Offset operators/owners plat, and certification of notification
4. 7.5 minute topographic map showing the orthodox windows, and enlargement of the map to define topographic features.

We appreciate your earliest consideration of this application.

Sincerely,

Peggy Bradfield  
Regulatory/Compliance Administrator

xc: NMOCD - Aztec District Office  
Bureau of Land Management - FDO

## WAIVER


\_\_\_\_\_ hereby waives objection to Burlington Resources' application for a non-standard location for their Hancock A #1A as proposed above.

By: \_\_\_\_\_ Date: \_\_\_\_\_

xc: Amoco Production  
Conoco Inc.  
Four Star Oil & Gas  
Phillips Petroleum

UNITED STATES  
DEPARTMENT OF THE INTERIOR  
BUREAU OF LAND MANAGEMENT

APPLICATION FOR PERMIT TO DRILL, DEEPEN, OR PLUG BACK

<b>1a. Type of Work</b> DRILL	<b>5. Lease Number</b> NM-04209 <b>Unit Reporting Number</b>	
<b>1b. Type of Well</b> GAS	<b>6. If Indian, All. or Tribe</b>	
<b>2. Operator</b> <i><b>BURLINGTON RESOURCES</b></i> Oil & Gas Company	<b>7. Unit Agreement Name</b>	
<b>3. Address &amp; Phone No. of Operator</b> PO Box 4289, Farmington, NM 87499  (505) 326-9700	<b>8. Farm or Lease Name</b> Hancock A <b>9. Well Number</b> 1A	
<b>4. Location of Well</b> 755' FSL, 1695' FEL  Latitude 36° 36.8, Longitude 107° 45.3	<b>10. Field, Pool, Wildcat</b> Blanco Mesa Verde <b>11. Sec., Twn, Rge, Mer. (NMPM)</b> Sec 35, T-28-N, R-9-W <b>API # 30-045-</b>	
<b>14. Distance in Miles from Nearest Town</b> 10 miles to Blanco	<b>12. County</b> San Juan	<b>13. State</b> NM
<b>15. Distance from Proposed Location to Nearest Property or Lease Line</b> 755	<b>17. Acres Assigned to Well</b> 320.15 E/2	
<b>16. Acres in Lease</b>	<b>18. Distance from Proposed Location to Nearest Well, Drlg, Compl, or Applied for on this Lease</b> 300'	
<b>19. Proposed Depth</b> 4792	<b>20. Rotary or Cable Tools</b> Rotary	
<b>21. Elevations (DF, FT, GR, Etc.)</b> 5980' GR	<b>22. Approx. Date Work will Start</b>	
<b>23. Proposed Casing and Cementing Program</b> See Operations Plan attached		
<b>24. Authorized by:</b>  <b>Regulatory/Compliance Administrator</b> <span style="float: right;"><u>7-11-97</u> Date</span>		

PERMIT NO. \_\_\_\_\_ APPROVAL DATE \_\_\_\_\_

APPROVED BY \_\_\_\_\_ TITLE \_\_\_\_\_ DATE \_\_\_\_\_

Archaeological Report submitted  
Threatened and Endangered Species Report submitted  
NOTE: This format is issued in lieu of U.S. BLM Form 3160-3

District I  
PO Box 1980, Hobbs, NM 88241-1980  
District II  
PO Drawer 00, Artesia, NM 88211-0719  
District III  
1000 Rio Brazos Rd., Aztec, NM 87410  
District IV  
PO Box 2088, Santa Fe, NM 87504-2088

State of New Mexico  
Energy, Minerals & Natural Resources Department

OIL CONSERVATION DIVISION  
PO Box 2088  
Santa Fe, NM 87504-2088

Form C-1  
Revised February 21, 19  
Instructions on b7  
Submit to Appropriate District Off.  
State Lease - 4 Cop  
Fee Lease - 3 Cop

☐ AMENDED REPO:

WELL LOCATION AND ACREAGE DEDICATION PLAT

API Number 30-045-	Pool Code 72319	Pool Name Blanco Mesaverde
Property Code 7077	Property Name Hancock A	Well Number 1A
OGRID No. 14538	Operator Name BURLINGTON RESOURCES OIL & GAS COMPANY	Elevation 5980'

10 Surface Location

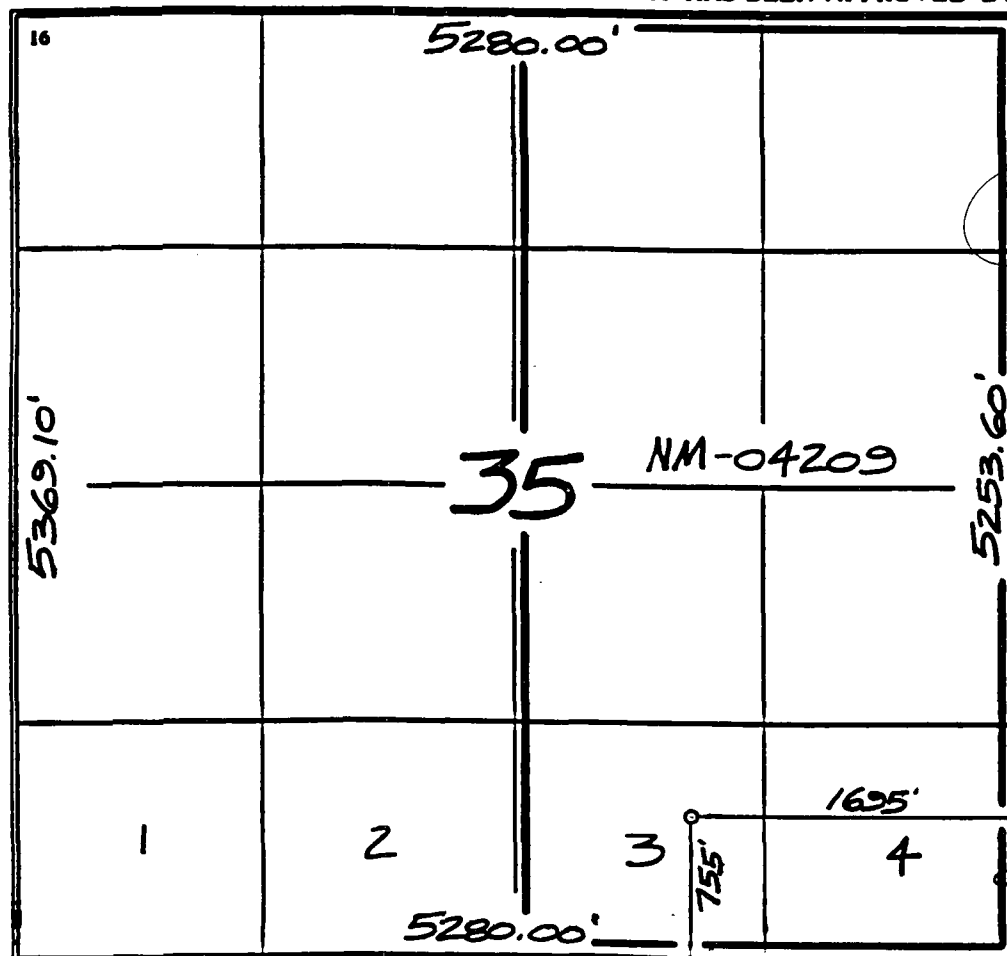
UL or lot no.	Section	Township	Range	Lot Idn	Feet from the	North/South line	Feet from the	East/West line	County
0	35	28-N	9-W		755	South	1695	East	S.J.

11 Bottom Hole Location If Different From Surface

UL or lot no.	Section	Township	Range	Lot Idn	Feet from the	North/South line	Feet from the	East/West line	County

12 Dedication Acres MV-E 320.15	13 Joint or Infill 15	14 Consolidation Code	15 Order No.
------------------------------------	--------------------------	-----------------------	--------------

NO ALLOWABLE WILL BE ASSIGNED TO THIS COMPLETION UNTIL ALL INTERESTS HAVE BEEN CONSOLIDATED  
OR A NON-STANDARD UNIT HAS BEEN APPROVED BY THE DIVISION



17 OPERATOR CERTIFICATION

I hereby certify that the information contained herein is true and complete to the best of my knowledge and belief.

*Peggy Bradfield*  
Signature  
Peggy Bradfield  
Printed Name  
Regulatory Administrator  
Title  
7-11-97  
Date

18 SURVEYOR CERTIFICATION

I hereby certify that the well location shown on this plat was plotted from field notes of actual surveys made by me or under my supervision, and that the same is true and correct to the best of my belief.

6/09/97  
Date of Survey  
Signature and Seal of Professional Surveyor

NEALE C. EDWARDS  
NEW MEXICO  
6857  
Certification Number

## OPERATIONS PLAN

Well Name: Hancock A #1A  
Location: 755' FSL, 1695' FEL Section 35, T-28-N, R-9-W  
Rio Arriba County, New Mexico  
Latitude 36° 36.8, Longitude 107° 45.3  
Formation: Blanco Mesa Verde  
Elevation: 5980' GL

<u>Formation Tops:</u>	<u>Top</u>	<u>Bottom</u>	<u>Contents</u>
Surface	San Jose	996'	aquifer
Ojo Alamo	996'	1866'	aquifer
Fruitland	1866'	2128'	
Pictured Cliffs	2128'	2218'	gas
Lewis	2218'	3028'	gas
Intermediate TD	2318'		
Mesa Verde	3028'	5290'	gas
Chacra	3088'	3778'	gas
Massive Cliff House	3778'	3793'	gas
Menefee	3793'	4392'	gas
Massive Point Lookout	4392'		gas
Total Depth	4792'		

### Logging Program:

Cased hole logging - Gamma Ray Neutron  
Coring/DST - none

### Mud Program:

<u>Interval</u>	<u>Type</u>	<u>Weight</u>	<u>Vis.</u>	<u>Fluid Loss</u>
0- 200'	Spud	8.4-9.0	40-50	no control
200-2318'	LSND	8.4-9.0	30-60	no control
2318-4792'	Gas/Mist	n/a	n/a	n/a

Pit levels will be visually monitored to detect gain or loss of fluid control.

### Casing Program (as listed, the equivalent, or better):

<u>Hole Size</u>	<u>Depth Interval</u>	<u>Csq. Size</u>	<u>Wt.</u>	<u>Grade</u>
12 1/4"	0' - 200'	9 5/8"	32.3#	H-40
8 3/4"	0' - 2318'	7"	20.0#	J-55
6 1/4"	2168' - 4792'	4 1/2"	10.5#	J-55

### Tubing Program:

0' - 4792'      2 3/8"      4.7#      J-55

### BOP Specifications, Wellhead and Tests:

Surface to Intermediate TD -

11" 2000 psi minimum double gate BOP stack (Reference Figure #1).  
After nipple-up prior to drilling out surface casing, rams and casing will be tested to 600 psi for 30 minutes.

BOP Specifications, Wellhead and Tests (cont'd):

**Intermediate TD to Total Depth -**

11" 2000 psi minimum double gate BOP stack (Reference Figure #1).  
After nipple-up prior to drilling out intermediate casing, rams  
and casing will be tested to 1500 psi for 30 minutes.

**Surface to Total Depth -**

2" nominal, 2000 psi minimum choke manifold (Reference Figure #3).

**Completion Operations -**

7 1/16" 2000 psi double gate BOP stack (Reference Figure #2).  
After nipple-up prior to completion, pipe rams, casing and liner  
top will be tested to 2000 psi for 15 minutes.

**Wellhead -**

9 5/8" x 7" x 2 3/8" x 2000 psi tree assembly.

**General -**

- Pipe rams will be actuated once each day and blind rams will be actuated once each trip to test proper functioning.
- An upper kelly cock valve with handle available and drill string valves to fit each drill string will be available on the rig floors at all times.
- BOP pit level drill will be conducted weekly for each drill crew.
- All BOP tests & drills will be recorded in daily drilling reports.
- Blind and pipe rams will be equipped with extension hand wheels.

**Cementing:**

9 5/8" surface casing - cement with 163 sx Class "B" cement with 1/4# flocele/sx and 3% calcium chloride (188 cu.ft. of slurry, 200% excess to circulate to surface). WOC 12 hrs. Test casing to 600 psi for 30 minutes.

Saw tooth guide shoe on bottom. Bowspring centralizers will be run in accordance with Onshore Order #2.

**7" intermediate casing -**

Lead w/174 sx Class "B" w/3% sodium metasilicate, 5# gilsonite/sx and 1/2# flocele/sx. Tail w/90 sx 50/50 Class "B" Poz w/2% calcium chloride, (610 cu.ft. of slurry, 75% excess to circulate to surface.) WOC minimum of 12 hours before drilling out intermediate casing. If cement does not circulate to surface, a CBL will be run to determine TOC. Test casing to 1500 psi for 30 minutes.

Cement nose guide shoe on bottom with float collar spaced on top of shoe joint. Bowspring centralizers spaced every other joint off bottom, to the base of the Ojo Alamo at 1866'. Two turbolating centralizers at the base of the Ojo Alamo at 1866'. Bowspring centralizers spaced every fourth joint from the base of the Ojo Alamo to the base of the surface casing.

## 4 1/2" Production Liner -

Cement to circulate liner top. Lead with 150 sx 65/35 Class "B" poz w/6% gel, 5# gilsonite/sx and 1/4# flocele/sx. Tail with 135 sx 50/50 Class "B" Poz w/1/4# flocele/sx, 5# gilsonite/sx and 0.3% fluid loss additive (471 cu.ft., 75% excess to circulate liner top). WOC a minimum of 18 hrs prior to completing.

Cement nose guide shoe on bottom with float collar spaced on top of shoe joint. The liner hanger will have a rubber packoff.

- If hole conditions permit, an adequate water spacer will be pumped ahead of each cement job to prevent cement/ mud contamination or cement hydration.
- The pipe will be rotated and/or reciprocated, if hole conditions permit.

Special Drilling Operations (Gas/Mist Drilling):


The following equipment will be operational while gas/mist drilling:

- An anchored blooie line will be utilized to discharge all cuttings and circulating medium to the blow pit a minimum of 100' from the wellhead.
- The blooie line will be equipped with an automatic igniter or pilot light.
- Compressors will be located a minimum of 100' from the wellhead in the opposite direction from the blooie line.
- Engines will have spark arresters or water cooled exhaust.
- The rotating head will be properly lubricated and maintained.
- A float valve will be utilized above the bit.
- Mud circulating equipment, water, and mud materials will be sufficient to maintain control of the well.

Additional Information:

- The Mesa Verde formation will be completed.
- No abnormal temperatures or hazards are anticipated.
- Anticipated pore pressures are as follows:

Fruitland Coal	800 psi
Pictured Cliffs	800 psi
Mesa Verde	700 psi
- Sufficient LCM will be added to the mud system to maintain well control, if lost circulation is encountered below the top of the Pictured Cliffs.
- The east half is dedicated to the Mesa Verde.
- This gas is dedicated.

  
\_\_\_\_\_  
Drilling Engineer

7/14/97  
\_\_\_\_\_  
Date

# ***BURLINGTON RESOURCES***

## Hancock A #1A Multi-Point Surface Use Plan

1. Existing Roads - Refer to Map No. 1. Existing roads used to access the proposed location will be properly maintained for the duration of the project. Bureau of Land Management right-of-way has been applied for as shown on Map No. 1.
2. Planned Access Road - Refer to Map No. 1 - None required.
3. Location of Existing Wells - Refer to Map No. 1A.
4. Location of Existing and/or Proposed Facilities if Well is Productive -
  - a. On the Well Pad - Refer to Plat No. 1, anticipated production facilities plat.
  - b. Off the Well Pad - Anticipated pipeline facilities as shown on the attached plat from El Paso Field Service.
5. Location and Type of Water Supply - Water will be hauled by truck for the proposed project and will be obtained from Five Mile Water Hole located in SW/4 Section 26, T-29-N, R-9-W, New Mexico.
6. Source of Construction Materials - If construction materials are required for the proposed project, such materials will be obtained from a commercial quarry.
7. Methods of Handling Waste Materials - All garbage and trash materials will be removed from the site for proper disposal. A portable toilet will be provided for human waste and serviced in a proper manner. If liquids are left in the reserve pit after completion of the project, the pit will be fenced until the liquids have had adequate time to dry. The location clean-up will not take place until such time as the reserve pit can be properly covered over to prevent run-off from carrying waste materials into the watershed. Reserve pits will be lined as needed with either 12 mil bio-degradable plastic liner or a bentonite liner. All earthen pits will be so constructed as to prevent leakage from occurring; no earthen pit will be located on natural drainage. Generation of hazardous waste is not anticipated. Federal regulations will be adhered to regarding handling and disposal of such waste if so generated.
8. Ancillary Facilities - None anticipated.
9. Wellsite Layout - Refer to the location diagram and to the wellsite cut and fill diagram (Figure No. 4). The blow pit will be constructed with a 2'/160' grade to allow positive drainage to the reserve pit and prevent standing liquids in the blow pit.

10. Plans for Restoration of the Surface - After completion of the proposed project, the location will be cleaned and leveled. The location will be left in such a condition that will enable reseeding operations to be carried out. Seed mixture as designated by the responsible government agency will be used. The reseeding operations will be performed during the time period set forth by the responsible government agency. The permanent location facilities will be painted as designated by the responsible government agency.
11. Surface Ownership - Bureau of Land Management
12. Other Information - Environmental stipulations as outlined by the responsible government agency will be adhered to. Refer to the archaeological report for a description of the topography, flora, fauna, soil characteristics, dwellings, historical and cultural sites.
13. Operator's Representative and Certification - Burlington Resources Oil & Gas Company Regional Drilling Manager, Post Office Box 4289, Farmington, NM 87499, telephone (505) 326-9700. I hereby certify that I, or persons under my direct supervision, have inspected the proposed drill site and access route; that I am familiar with the conditions which presently exist; that the statements made in this plan, are to the best of my knowledge, true and correct; and that the work associated with the operations proposed herein will be performed by Burlington Resources Oil and Gas Company and its contractors and subcontractors in conformity with this plan and the terms and conditions under which it is approved.

 7-11-97  
Regulatory/Compliance Administrator Date

pb



**BURLINGTON  
RESOURCES**

**HANCOCK A #1A  
T28N, R9W**

**NO NEW CONSTRUCTION  
T28N, R9W**

**Section 35: SWSE Existing  
Right of Way**

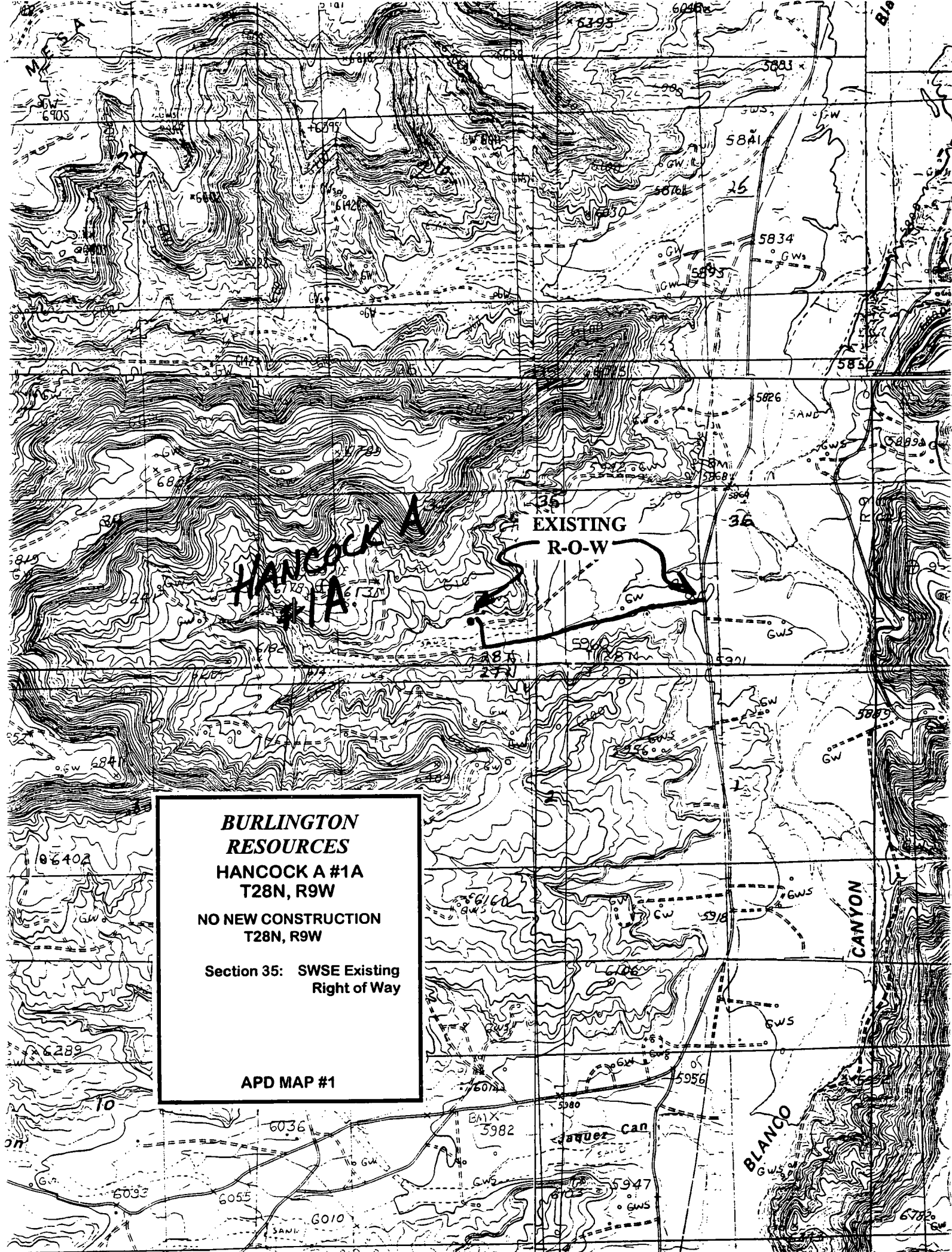
**APD MAP #1**

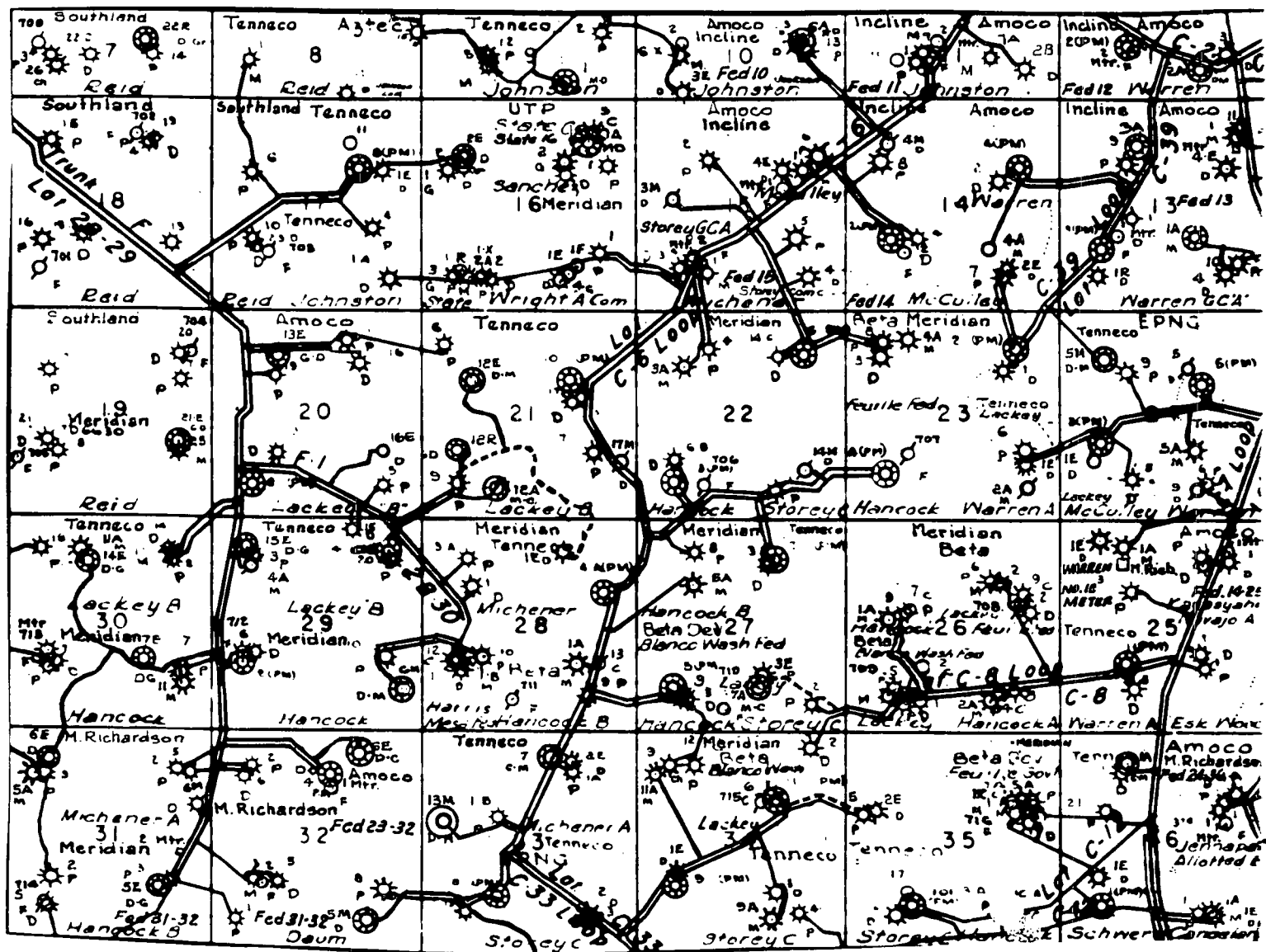
**EXISTING  
R-O-W**

**CANYON**

**BLANCO**

**Jaquer Can**



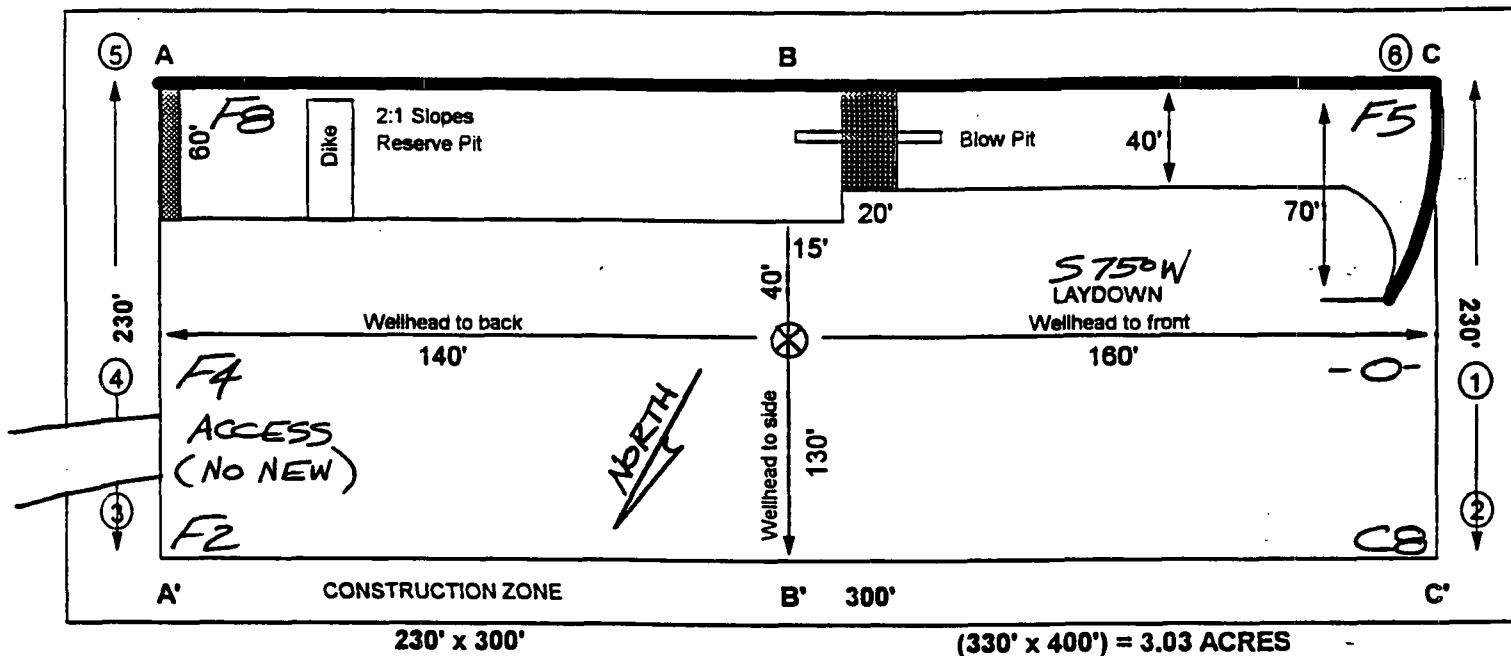


MERIDIAN OIL INC.  
 Pipeline Map  
 T-28-N, R-09-W  
 San Juan County, New Mexico  
 Hancock A #1A  
 Map 1A

# BURLINGTON RESOURCES

## PLAT #1

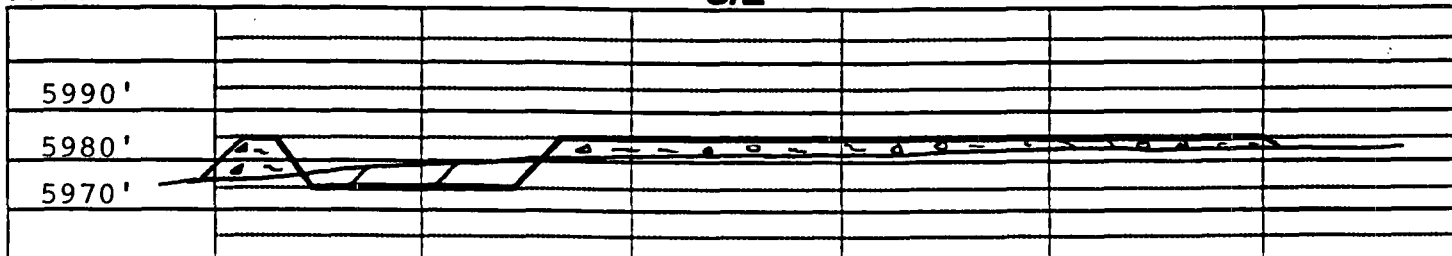
NAME: Hancock A #1A  
 FOOTAGE: 755' FSL, 1695' FEL,  
 SEC 35 TWN 28N N.R. 9W W NMPM  
 CO: San Juan ST: New Mexico  
 ELEVATION: 5980' DATE: 6/9/97



Reserve Pit Dike: to be 8' above Deep side (overflow - 3' wide and 1' above shallow side).  
 Blow Pit: overflow pipe halfway between top and bottom and to extend over plastic liner and into blow pit.

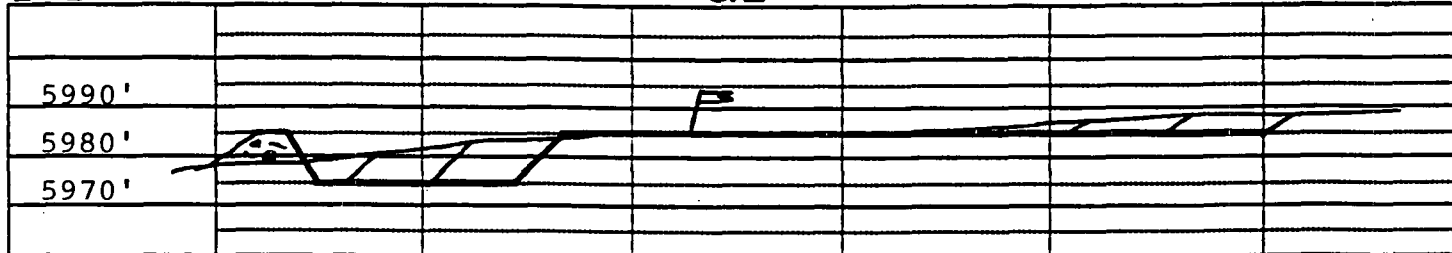
A - A'

C/L



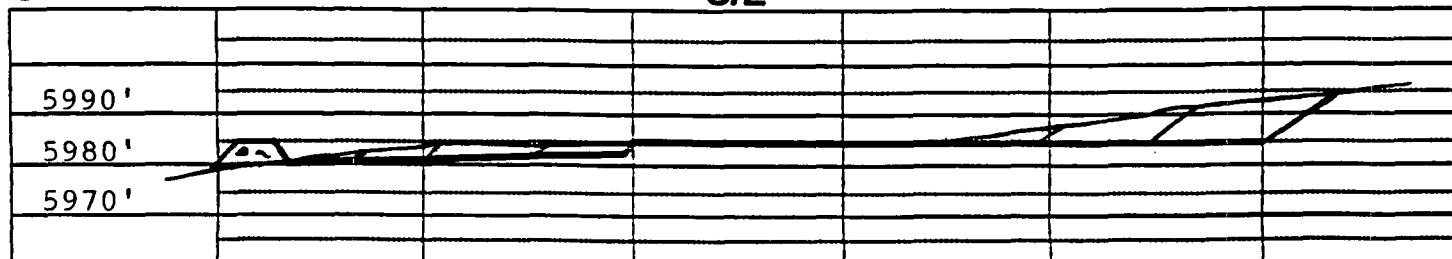
B - B'

C/L



C - C'

C/L



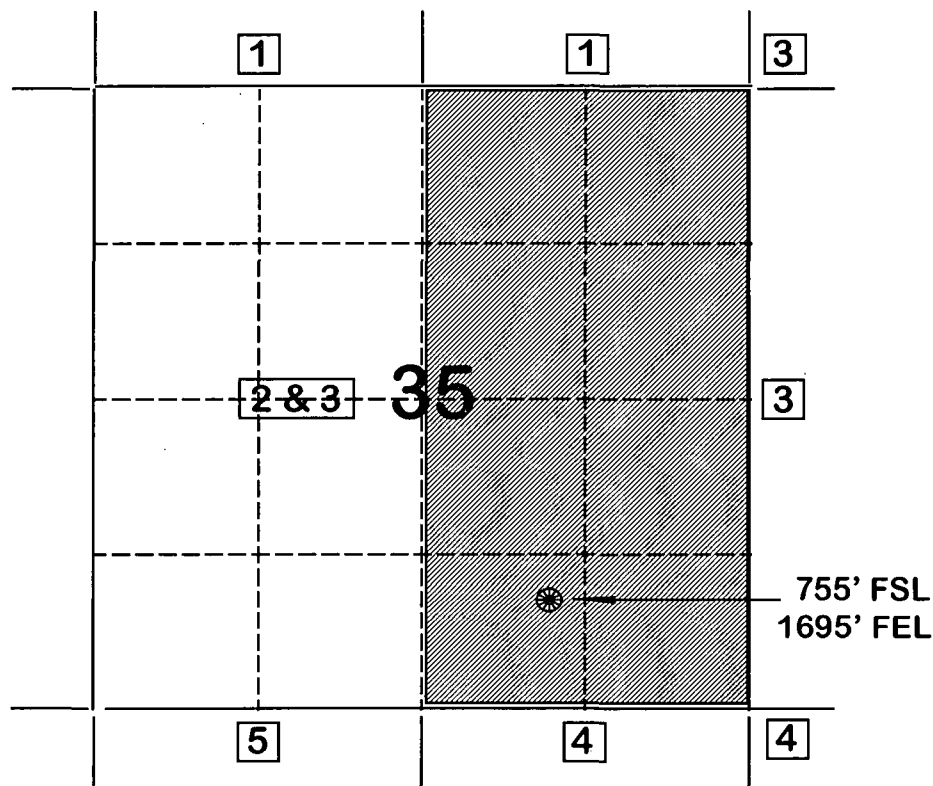
Note: Contractor should call One-Call for location of any marked or unmarked buried pipelines or cable on well pad and/or access road at least two (2) working days prior to construction.

**BURLINGTON RESOURCES OIL AND GAS COMPANY**

**Hancock A #1A  
OFFSET OPERATOR \ OWNER PLAT  
Nonstandard Location**

**Mesaverde Formation Well**

**Township 28 North, Range 9 West**



1) Burlington Resources Oil and Gas Company

2) Amoco Production Company

Attn: Bruce Zimney

P.O. Box 800

Denver, CO 80201

3) Conoco Inc.

10 Desta Drive, Suite 100W

Midland, TX 79705-4500

4) Four Star Oil & Gas Company

Attn: Gary Cox

P.O. Box 2100

Denver, CO 80201

5) Phillips Petroleum Company

Attn: Pat Noah

5525 Hwy 64, NBU 3004

Farmington, NM 87401

Re: Hancock A #1A  
755'FSL, 1695'FEL, Section 35, T-28-N, R-9-W, San Juan County  
API # 30-045-not yet assigned

I hereby certify that the following offset operators/owners have been mailed notification of our application for non-standard location to drill the referenced well.

Amoco Production  
Att: Bruce Zimney  
PO Box 800  
Denver, CO 80201

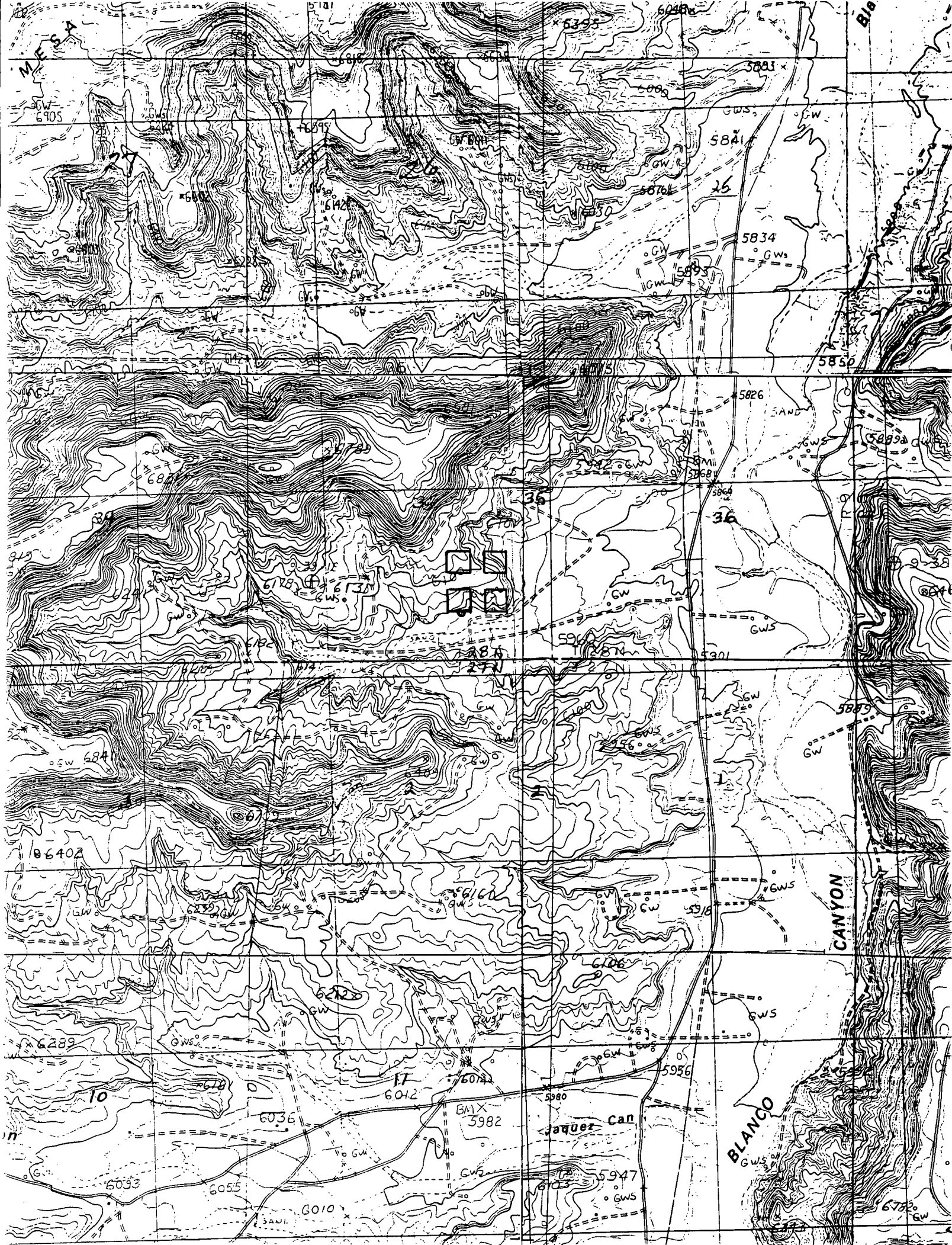
Conoco Inc.  
10 Desta Drive, Suite 100W  
Midland, TX 79705-4500

Four Star Oil & Gas Company  
Att: Gary Cox  
PO Box 2100  
Denver, CO 80201

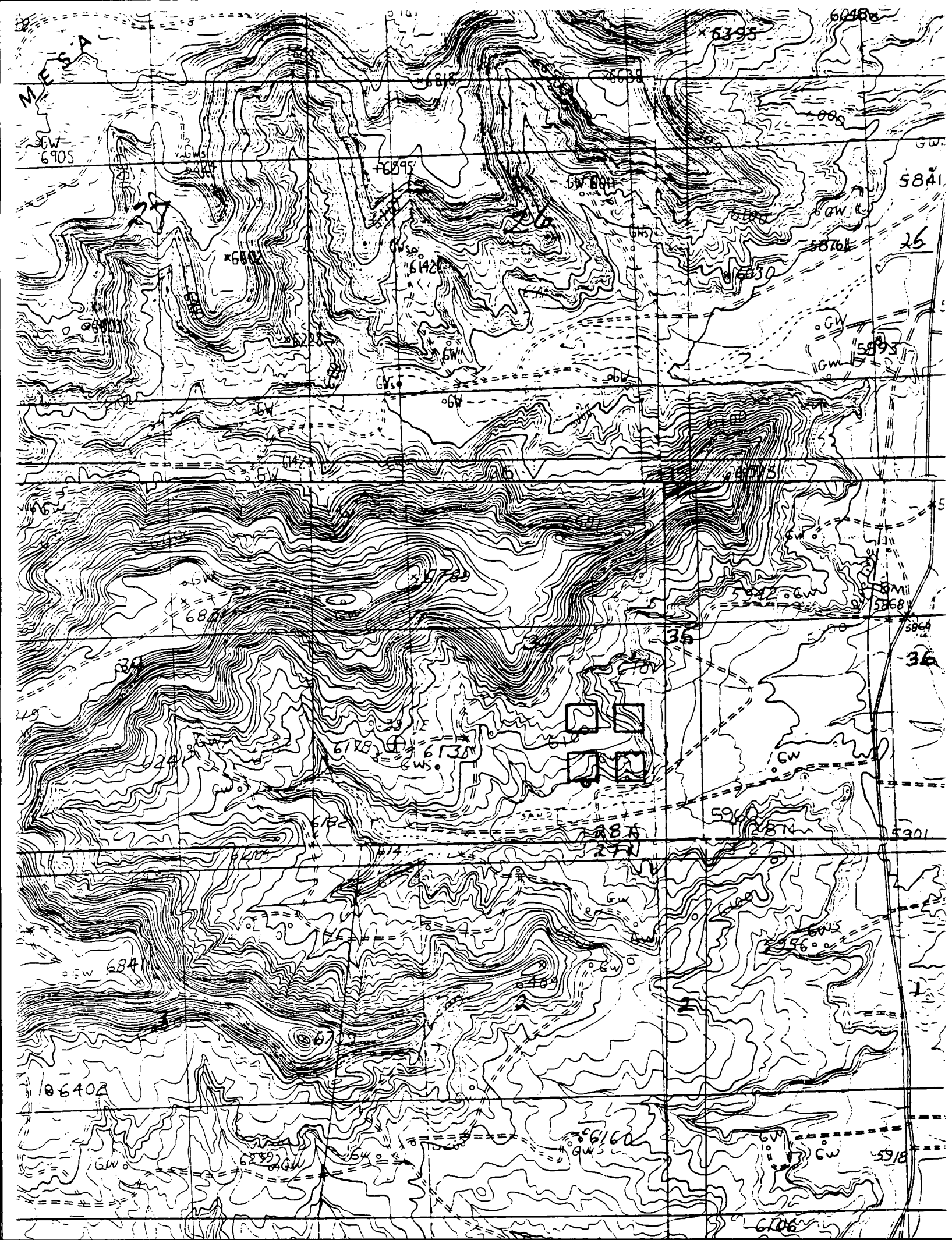
Phillips Petroleum Co  
Att: Pat Noah  
5525 Highway 64, NBU 3004  
Farmington, NM 87401

  
Peggy Bradfield  
Regulatory/Compliance Administrator

7/24/97







CMD :  
OG5SECT

ONGARD  
INQUIRE LAND BY SECTION

08/11/97 17:24:37  
OGOMES -EMDX  
PAGE NO: 1

Sec : 35 Twp : 28N Rng : 09W Section Type : **NORMAL**

D 40.00  Federal owned	C 40.00  Federal owned	B 40.00  Federal owned	A 40.00  Federal owned
E 40.00  Federal owned  A A	F 40.00  Federal owned	G 40.00  Federal owned	H 40.00  Federal owned  A A A

PF01 **HELP**  
PF07 **BKWD**

PF02  
PF08 **FWD**

PF03 **EXIT**  
PF09 **PRINT**

PF04 **GoTo**  
PF10 **SDIV**

PF05  
PF11

PF06  
PF12



CMD :  
OG5SECT

ONGARD  
INQUIRE LAND BY SECTION

08/11/97 17:24:45  
OGOMES -EMDX  
PAGE NO: 2

Sec : 35 Twp : 28N Rng : 09W Section Type : **NORMAL**

L 40.00  Federal owned	K 40.00  Federal owned	J 40.00  Federal owned	I 40.00  Federal owned
1 42.26  Federal owned  A	2 41.39  Federal owned  A	3 40.51  Federal owned  A	4 39.64  Federal owned  A

PF01 **HELP**  
PF07 **BKWD**

PF02  
PF08 **FWD**

PF03 **EXIT**  
PF09 **PRINT**

PF04 **GoTo**  
PF10 **SDIV**

PF05  
PF11

PF06  
PF12

40.51  
39.64  

---

80.15

WELL S T R	JAN	FEB	MAR	APRIL	MAY	JUNE	JULY	AUG	SEPT	OCT	NOV	DEC 1986	PROD	HP	ACCU
A 2C1430N10W GAS	10230	4820	9071								13296	10602	48019	1364828	
OIL	65	33	37								13	45	5024		
3H1230N10W GAS	14510	7581	8303	2		14966				16203	14200	75763	5359269		
OIL	70	17	23			10				26	38	324			
A 301230N10W GAS	3331	4858	6511			11909	11			10165	9198	45572	1334838		
OIL	1												2167		
4L1230N10W GAS	11008	5513				16125				15015	8437	56098	5712629		
OIL	68	27				62				72	38	22780	149170		
A 401230N10W GAS	13860	7524					1396						574		
OIL	53	31											5474		
LEASE TOTAL	457	320	213	129	197	246	159	90	82	38	126	135	2192	58353	
GAS	70834	51675	49817	15350	17304	55517	13892	12530	6664	58483	48193	400453	20794428		
HANCOCK															
2L2928N 9W GAS	2870	2204	2624	382			1			53	5304	3596	17033	1235562	
OIL	3	2	2										13		
3M2228N 9W GAS	342		249	1159									439	559466	
OIL	16		4	16									144	12133	
A 3F2228N 9W GAS	4156			8765	20231	13287	13870	10616	6893	10028	7298	8262	103406	137017	
OIL	132			608	710	560	436	402	43	384	247	107	3629	6835	
WAT	19			21	81	60	81	81	58	3	2	2	7283	1978505	
4M2328N 9W GAS	978		828	5477									58	13708	
OIL	15			43									58		
A 4C2328N 9W GAS	2553			4633	20047	10916	11185	10459	4249			3711	67753	110565	
OIL	24			21	250	142	135	173	51			62	859	1586	
WAT	20			7	74	54	72	62	25				214		
5M2728N 9W GAS	1316		3080							498			4501	1110893	
OIL	1131			6251	16232	10130	10685	7624	4685			3884	60622	80328	
WAT	5			130	90	62	79	53				48	484	821	
M 6P2928N 9W GAS		782	1024	5135	303	912	1103	1399	934	990	2670	4419	19671	19671	
OIL				86	1	78	30	4	5	122	15	26	400	400	
WAT				13		180	73	85		6	27	48	145	1126	
11P3028N 9W GAS	167		240										138	138	
OIL	93			5									5773	42688	
LEASE TOTAL	1351	2986	8045	31809	56813	35423	36916	30183	16791	11079	16209	24827	28458	523137	
GAS	50	2	6	81	229	170	222	226	131	9	31	66	1233		
HANCOCK A															
1H3528N 9W GAS	LAST	PROD. DATE	05/76												
2G2628N 9W GAS	433		2437								1543	2325	6728	64811	
OIL													872		
A 202628N 9W GAS	2377		16860	10431	11949	2141				12342		3084	59183	114818	
OIL	64		1	92	94	27				104		8	548	1184	
WAT	5		25	18	23	4				17		3	55		
LEASE TOTAL	64		159	92	92	27				104		8	548	2056	
GAS	2810		19297	10433	11949	2141				12342		5409	65922	1346891	
WAT	5		26	18	23	4				17		4	55		
HANCOCK B															
1L2828N 9W GAS	131	16	1208	731	5572	7365	6865	6960	5968	6014	5650	5763	54311	1060574	
OIL	51	84	33	30	75	74	58	90	186	42	17	7	683	565790	
WAT	28	12	24	11	78	108	111	110	104	10	9	9	615		
LEASE TOTAL	1365	880	1208	731	5572	7365	6865	6960	5968	6014	5650	5763	54311	1117030	
GAS	28	13	24	11	78	108	111	110	104	10	9	9	615		
HARDIE A															
1N2629N 8W GAS	4827	4254	4686	1766				4427	4841		5336	5826	35565	3008329	
OIL	60		5	3				20	25		20	18	184	15151	
WAT	5			2				5	7		4	7	36		
A 1E2629N 8W GAS	8134	4189	10052	7829	25763	17956	15371	8581	22907	19504	15556	14369	170611	1120572	
OIL	61		55	62	78	115	83		155	55	43	38	847	6948	
WAT													36		
A 2C2429N 8W GAS	4429	6428	3942					836	7775		1467		24877	1252924	
OIL		28						13					41	5448	
WAT													2		
R 2K2429N 8W GAS	6890	4366	4218	2903				6163	8694		6380	1257	40871	2933876	
OIL	51	14	12	22				5	17		29		159	18100	
WAT	13	7		5									1		
LEASE TOTAL	172	71	105	87	78	115	93	38	236	95	145	36	671	46147	
GAS	24280	19237	22898	12498	25763	17956	15371	20007	44217	19904	28739	21454	272324	8315701	
WAT	18	16	12	7				12	22	55	53	46	241		
HARDIE B															
1L2829N 8W GAS	8221	5954	6657	1322	8129					4	7668	5738	43689	3953012	
OIL		3		32									39	24403	
WAT													3		
A 1C2829N 8W GAS	5841	2606	5076	2703	15741	15669	21193	18236	17044	17124	15146	15410	15575	695282	
OIL	91	49	35	55	301	268	310	196	252	201	254	281	2293	114774	
WAT										39	34	35	108		
LEASE TOTAL	91	52	35	87	301	268	310	196	252	201	254	281	2293	35877	
GAS	14062	8560	11733	4025	27801	15669	21193	18236	17044	17124	15146	15410	15575	4648294	
WAT										39	36	38	115		
HARDIE D															
1M1228N 8W GAS	1255	2986	3608	2506				6776					17131	2044885	
OIL	8	8	12	22				31					81	9484	
A 101228N 8W GAS	3089	4455	6845	5382	10418	16687	11539	12818	7118				78351	648767	
OIL	16	24	6	63	80	211	21	91	72				580	4742	
WAT	500	1785	1829	136				2057					607	148732	
2K1428N 8W GAS	6514	5903	5515	6201	9967	15706	10531	13003	11402	6262	97		91101	664686	
OIL	72	18		39	46	233		143	117	8	21		696	4691	
WAT													8		
LEASE TOTAL	96	44	32	124	126	444	21	265	189	8	21		1362	24697	
GAS	11358	15129	17797	14225	20385	32393	22070	34654	18520	6262	97		192890	4844077	
WAT													8		
HARDIE E															
101628N 8W GAS	2099	1059	1112	586				2156	2756		2432	1087	13287	1835318	
OIL														866	
WAT															
A 111628N 8W GAS	7499	5864	6038	5529	7523	5499	6831	6411	6422	7905	2667	4204	72352	578164	
OIL	86	60	54	52	46	38	30	39	54	74	23	1	557	4883	
WAT															
2N 928N 8W GAS	4716	3568	1922	2455				3730	6417		5693	3809	32361	2403292	
OIL	18	23	5	36				8	10		11	25	60		
WAT													153	11140	
A 2P 928N 8W GAS	7116	3915	4053	3228	110			4927	7521	1226	6628	3620	42363	955593	
OIL	14	11	5	6				6	15		3	2	62		
WAT	23	31	20	15				11	24		1		250	4419	
3B2328N 8W GAS	3205	558	3293	1197				9045			3790	1412	22500	2016954	
OIL	24		16					38			2		81	6886	
WAT													1		
A 3I2328N 8W GAS	7323	4997	6621	7195	10554	6235	7466	17194	14320	14651	10219	7297	114112	791235	
OIL	35	29	31	53	59	26	23	90	61	79	82	18	586	4277	
WAT															
LEASE TOTAL	199	143	110	177	105	64	53	175	214	47	30	34	1667	32471	
GAS	31958	20011	23039	20190	18187	11734	14297	43463	37436	23822	31429	21420	256986	8585616	
WAT	42	28	28	22				19	43	72	58	53	365		
HARRINGTON															
6K3127N 7W GAS	6651	3224	5082	7977	7885	5733	6620	6114	6382	5994	5527	5024	72513	74472	
OIL	441	217	324	216	213	118	189	119	183	182	110	93	2390	2740	
WAT	3	2	3	4	4	3</									

**28N-9W-35-08 (SE NE)  
NEW MEXICO NM**

WELL HANCOCK 1A  
OPER EL PASO NATURAL GAS  
CNTY SAN JUAN

API: 30-045-06987  
ISSUE: A07/86  
CARD: -1

eCopyright Petroleum Information Corp. 1987 - Reproduction Prohibited

Title 18 U.S.C. Section 1001, makes it a crime for any person knowingly and willfully to make to any department, agency of the United States any false, fictitious or fraudulent statements or representations as to any matter within its jurisdiction.

EXPLORATION RESOURCE AREA  
FARMINGTON NEW MEXICO

UNITED STATES  
DEPARTMENT OF THE INTERIOR  
BUREAU OF LAND MANAGEMENT

SUBMIT IN TRIPLICATE  
(Other instructions on reverse side)

Form approved  
Budget Bureau No. 1004-0135  
Expires August 31, 1985

SUNDRY NOTICES AND REPORTS ON WELLS

(Do not use this form for proposals to drill or to deepen or plug back to a different reservoir.  
Use "APPLICATION FOR PERMIT—" for such proposals.)

1. OIL WELL <input type="checkbox"/> GAS WELL <input checked="" type="checkbox"/> OTHER <input type="checkbox"/>		7. UNIT AGREEMENT NAME
2. NAME OF OPERATOR El Paso Natural Gas Company		8. FARM OR LEASE NAME Hancock A
3. ADDRESS OF OPERATOR PO Box 4289, Farmington, NM 87499		9. WELL NO. #1
4. LOCATION OF WELL (Report location clearly and in accordance with app. State requirements. See also space 17 below.) At surface 1850'N, 1090'E		10. FIELD AND POOL, OR WILDCAT Blanco MV
14. PERMIT NO.		11. SEC. T., R., M., OR S.W. AND SURVEY OF AREA Sec. 35, T28N, R9W
15. ELEVATIONS (Show whether OF, AT, OR, ETC.) 6133' DF		12. COUNTY OR PARISH San Juan
		13. STATE N.M.

RECEIVED

JUN 20 1985

BUREAU OF LAND MANAGEMENT  
FARMINGTON RESOURCE AREA

16. Check Appropriate Box To Indicate Nature of Notice, Report, or Other Data

NOTICE OF INTENTION TO:

TEST WATER SHUT-OFF  
FRACTURE TREAT  
SHOOT OR ACIDIZE  
REPAIR WELL  
(Other)

PULL OR ALTER CASING  
MULTIPLE COMPLETION  
ABANDON\*  
CHANGE PLANE

SUBSEQUENT REPORT OF:

WATER SHUT-OFF  
FRACTURE TREATMENT  
SHOOTING OR ACIDIZING  
(Other)

REPAIRING WELL  
ALTERING CASING  
ABANDONMENT\*

(NOTE: Report results of multiple completion on Well Completion or Recaptivation Report and Log form.)

17. DESCRIBE PROPOSED OR COMPLETED OPERATIONS (Clearly state all pertinent details, and give pertinent dates, including estimated date of starting any proposed work. If well is directionally drilled, give subsurface location and measured and true vertical depths for all markers and zones pertinent to this work.)

- 6-11-85: 1) Circulate the well with mud.  
2) Spot a plug from TD to 3800 ft. to cover the open hole plus 50'.  
6-12-85: 1) Tag the PC plug at 2200 ft.  
2) Perforate the casing at 2127'. Squeeze cement to 2027' and spot a plug from 2127' to 2027' to cover the Fruitland formation.  
3) Perforate the casing at 1537' and squeeze cement to 1399' behind the casing. Spot a plug from 1537' to 1399' inside the casing.  
6-13-85: 1) Perforate the casing at 223' and circulate cement to surface thru the bradent head.  
2) Cut off wellhead and install a dry hole marker.

18. I hereby certify that the foregoing is true and correct

SIGNED

*W. D. Kell*

TITLE Production Engineer

DATE

June 9, 1985

(This space for Federal or State office use)

APPROVED BY

CONDITIONS OF APPROVAL, IF ANY:

TITLE

APPROVED

JUN 20 1985

12P AREA MANAGER  
FARMINGTON RESOURCE AREA

\*See Instructions on Reverse Side

NMOCC

Form 3160-5  
(November 1981)  
(Formerly 9-33)

UNITED STATES  
DEPARTMENT OF THE INTERIOR  
BUREAU OF LAND MANAGEMENT

SUBMIT IN TRIPLICATE  
(Other instructions on reverse side)

Form approved  
Budget Bureau No. 1004-0135  
Expires August 31, 1985

SUNDRY NOTICES AND REPORTS ON WELLS

(Do not use this form for proposals to drill or to deepen or plug back to a different reservoir.  
Use "APPLICATION FOR PERMIT" for such proposals.)

1. OIL WELL <input type="checkbox"/> GAS WELL <input checked="" type="checkbox"/> OTHER <input type="checkbox"/>	7. UNIT AGREEMENT NAME
2. NAME OF OPERATOR El Paso Natural Gas Company	8. FARM OR LEASE NAME Hancock A
3. ADDRESS OF OPERATOR P.O. Box 4289 Farmington, New Mexico 87499	9. WELL NO. 14
4. LOCATION OF WELL (Report location clearly and to accordance with any State requirements.* See also space 17 below.) At surface 1850 FNL, 1090 FEL, Sec. 35 - T 28N R9W	10. FIELD AND POOL, OR WILDCAT Blanco MV
14. PERMIT NO.	11. SEC., T., R., M., OR BLK. AND SURVEY OR AREA Sec. 35, 728N, R9W
15. ELEVATIONS (Show whether 80, 100, or 120 feet above sea level) 6133 DF	12. COUNTY OR PARISH San Juan
	13. STATE N.M.

16. Check Appropriate Box To Indicate Nature of Notice, Report, or Other Data

NOTICE OF INTENTION TO:		SUBSEQUENT REPORT OF:	
TEST WATER SHUT-OFF	<input type="checkbox"/>	WATER SHUT-OFF	<input type="checkbox"/>
FRACURE TREAT	<input type="checkbox"/>	FRACURE TREATMENT	<input type="checkbox"/>
SHOOT OR ACIDIZE	<input type="checkbox"/>	SHOOTING OR ACIDIZING	<input type="checkbox"/>
REPAIR WELL	<input type="checkbox"/>	(Other)	<input type="checkbox"/>

(Note: Report results of multiple completion on Well Completion or Recompletion Report and Log form.)

17. DESCRIBE PROMISED OR COMPLETED OPERATIONS (Clearly state all pertinent details, and give pertinent dates, including estimated date of starting any proposed work. If well is directionally drilled, give subsurface locations and measured and true vertical depths for all markers and zones pertinent to this work.)\*

Because of excessive water production we propose to P & A the well using the following procedure:

- 1) Circulate the hole with mud and spot a cement plug to fill from TD (4778') to 50' above the 7" casing (3885').
- 2) Perforate the 7" casing at 2127' and squeeze cement behind the casing to 2027'. Spot a plug from 2127' to 2027' inside the 7" casing to cover the Fruitland formation.
- 3) Perforate the 7" casing at 1537' and squeeze cement behind the casing to 1399'. Spot a plug inside the casing from 1537' to 1399' to cover the Kirtland and Ojo Alamo formations.
- 4) Perforate the 7" casing at 223' and circulate cement to surface thru the 7" - 9 5/8" annular space.
- 5) Set a dry hole marker.

18. I hereby certify that the foregoing is true and correct

SIGNED

*W. H. Webb*

TITLE Production Engineer

DATE

February 27, 1985

(This space for Federal or State office use)

APPROVED BY

CONDITIONS OF APPROVAL, IF ANY:

TITLE

DATE

*W. H. Webb*  
W. H. MILLENBACH  
AREA MANAGER

\*See Instructions on Reverse Side

NMOCC

Title 18 U.S.C. Section 1001, makes it a crime for any person knowingly and willfully to make to any department or agency of the United States any false, fictitious or fraudulent statements or representations as to any matter within its jurisdiction.

BUREAU OF LAND MANAGEMENT  
Caller Service 4104  
Farmington, New Mexico 87499

Attachment to Notice of  
Intention to Abandon

Re: Permanent Abandonment

Well: 1A Hancock A

CONDITIONS OF APPROVAL

1. Plugging operations authorized are subject to the attached "General Requirements for Permanent Abandonment of Wells on Federal Leases."
2. The Farmington office (telephone (505) 325-4572) is to be notified in sufficient time for a representative to witness all plugging operations.
3. Blowout prevention equipment is required.
4. In addition to normal filling of pits and cleanup of location, additional surface restoration work may be required, i.e. ripping of pad and/or access road, reseeding, etc. We have asked the Surface Management Agency for the surface restoration requirements for this well and we should be able to furnish you these requirements within 30 days. After plugging the well and before making final clean-up, you should contact this office unless you have already been advised as to what additional surface restoration work is required.
5. The following modifications to your plugging program are to be made (when applicable):

- A) Spot plug from 2376' - 2276', across pictured Cliffs.
- B) Spot surface plug in 7" csg. from 100' to surface.

RECEIVED  
MAR 08 1995  
OIL & GAS DIV.  
DIST. 3

You are further advised that any instructions, orders or decisions issued by the Bureau of Land Management are subject to technical and procedural review pursuant to 43 CFR 3165.3 and appeal pursuant to 43 CFR 3165.4 and 43 CFR 4.700.

Office Hours: 7:45 A.M. to 4:30 P.M.



GENERAL REQUIREMENTS FOR  
PERMANENT ABANDONMENT OF WELLS ON FEDERAL LEASES  
FARMINGTON RESOURCE AREA

1. Secure prior approval before changing the approved plugging program.
2. Plugging equipment, used shall have separate mixing and displacement pumps and a calibrated tank to assure proper displacement of plugs.
3. A proper tank or pit will be used to contain all fluids pumped from the well during plugging operations.
4. All cement plugs are to be placed through tubing (or drillpipe) and shall be a minimum of 15 sacks or 100 feet in length, whichever is greater.
5. Any cement plug placed when well is not full of fluid, or when well may be taking fluid, will be touched after cement has set to verify proper location.
6. Mud must be placed between plugs. Minimum consistency of plugging mud must be 9.2 lbs/gal. Brine is to be utilized for mixing mud where possible.
7. Within 30 days after plugging work is completed, file Subsequent Report of Abandonment, Form 3160-5 (formerly 9-331), in quintuplicate with Area Manager, Bureau of Land Management, Caller Service 4104, Farmington, New Mexico 87499. The report should give in detail the manner in which the plugging work was carried out, the extent (by depths) of cement plugs placed, and the size and location (by depths) of casing left in the well. Show date well was plugged.
8. All permanently abandoned wells are to be marked with a permanent monument, on which has been stenciled or beaded the well name, well number, and well location by quarter-quarter, section, township and range. The monument is to be of steel pipe, not less than four inches in diameter, cemented permanently in the ground, and extending four feet above general ground level. The top should be closed with a screw cap, welding, or a cement plug.
9. After plugging work is completed:
  - a. Fill all pits, rat hole and cellar.
  - b. Clean well location of all equipment, concrete bases, pipe, ~~junk~~ and ~~oil~~.
  - c. Cut or remove tie downs.
  - d. If last well on lease, and no additional drilling is contemplated, fill tank battery pit, remove battery equipment, and clean and level battery location.
  - e. Accomplish surface restoration as specified by the surface management agency or land owner.

All above are minimum requirements. The Subsequent Report of Abandonment will not be approved and the period of liability under the bond of record terminated until the lease is inspected and surface work approved.

Please advise this office when the well location is ready for final inspection.

You are further advised that any instructions, orders or decisions issued by the Bureau of Land Management are subject to technical and procedural review pursuant to 43 CFR 3165.3 and appeal pursuant to 43 CFR 3165.4 and 43 CFR 4.700.

RECEIVED  
MAR 08 1965



UNITED STATES  
DEPARTMENT OF THE INTERIOR  
GEOLOGICAL SURVEYADMIT IN TRIPLICATE  
(Other instructions on reverse side)Form approved  
Bureau of Geology No. 42-31421

3. LEASE DESIGNATION AND SERIAL NO.

NM04209

4. IF INDIAN, ALLOTTEE OR TRIBE NAME

7. UNIT AGREEMENT NAME

8. FARM OR LEASE NAME

Hancock A

9. WELL NO.

1

10. FIELD AND TOOL, OR WILDCAT

Blanco MV

11. SEC., T., R., OR BLK. AND  
SURVEY OR AREASec. 35, T-28-N, R-9-W  
N.M.P.M.

12. COUNTY OR PARISH

San Juan

13. STATE

New Mexico

## SUNDRY NOTICES AND REPORTS ON WELLS

(Do not use this form for proposals to drill or to deepen or plug back to a different reservoir.  
Use "APPLICATION FOR PERMIT—" for such proposals.)1. OIL WELL ☐ GAS WELL ☒ OTHER

2. NAME OF OPERATOR

El Paso Natural Gas Company

3. ADDRESS OF OPERATOR

P. O. Box 990, Farmingotn, NM 87401

4. LOCATION OF WELL (Report location clearly and in accordance with any State requirements.\*

See also space 17 below.)  
At surface

1850'N, 1090'E

14. PERMIT NO.

15. ELEVATIONS (Show whether OF, RT, OR, etc.)

6133' GL

## 16. Check Appropriate Box To Indicate Nature of Notice, Report, or Other Data

## NOTICE OF INTENTION TO:

TEST WATER SHUT-OFF ☐FRACTURE TREAT ☐SHOOT OR ACIDIZE ☐REPAIR WELL ☐

(Other)

PULL OR ALTER CASING ☐MULTIPLE COMPLETE ☐ABANDON\* ☐CHANGE PLANS ☐

Current Status

☒

## SUBSEQUENT REPORT OF:

WATER SHUT-OFF ☐FRACTURE TREATMENT ☐SHOOTING OR ACIDIZING ☐

(Other)

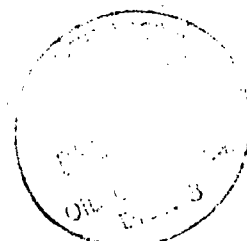
REPAIRING WELL ☐ALTERING CASING ☐ABANDONMENT\* ☐

(Note: Report results of multiple completion on Well Completion or Recompletion Report and Log form.)

17. DESCRIBE PROPOSED OR COMPLETED OPERATIONS (Clearly state all pertinent details, and give pertinent dates, including estimated date of starting any proposed work. If well is directionally drilled, give subsurface locations and measured and true vertical depths for all markers and zones pertinent to this work.) \*

This well last produced in September, 1971 and is being evaluated for recompletion or plug and abandonment.

DEC 5 1971



18. I hereby certify that the foregoing is true and correct

SIGNED

*M. P. Brown*

TITLE

Drilling Clerk

DATE

November 26, 1971

(This space for Federal or State office use)

APPROVED BY

TITLE

DATE

CONDITIONS OF APPROVAL, IF ANY:

\*See Instructions on Reverse Side

# NEW MEXICO OIL CONSERVATION COMMISSION Santa Fe, New Mexico

It is necessary that Form C-104 be approved before this form can be approved an initial allowable be assigned to any completed Oil or Gas well. Submit this form in QUADRUPLICATE.

## CERTIFICATE OF COMPLIANCE AND AUTHORIZATION TO TRANSPORT OIL AND NATURAL GAS

Company or Operator El Paso Natural Gas Company Lease Hancock "A"  
Address Box 997, Farmington, New Mexico El Paso, Texas  
(Local or Field Office) (Principal Place of Business)  
Unit NE H, Well(s) No. 1-A, Sec. 35, T. 28 N, R. 9 W, Pool Blanco MV  
County San Juan Kind of Lease Federal  
If Oil well Location of Tanks None  
Authorized Transporter El Paso Natural Gas Company Address of Transporter  
Farmington, New Mexico El Paso, Texas  
(Local or Field Office) (Principal Place of Business)  
Per cent of Oil or Natural Gas to be Transported 100 Other Transporters authorized to transport Oil or Natural Gas  
from this unit are

REASON FOR FILING: (Please check proper box)

NEW WELL ☒ CHANGE IN OWNERSHIP ☐  
CHANGE IN TRANSPORTER ☐ OTHER (Explain under Remarks) ☐  
REMARKS:



The undersigned certifies that the Rules and Regulations of the Oil Conservation Commission have been complied with.

Executed this the 2 day of September 19 53

El Paso Natural Gas Company

Approved 9-8, 19 53

OIL CONSERVATION COMMISSION

By [Signature]

By Emergy C. Arnold

Title Petroleum Engineer

Title Oil and Gas Inspector Dist. #3.

(Form C-101)  
(Revised 7/1/52)

**NEW MEXICO OIL CONSERVATION COMMISSION**  
Santa Fe, New Mexico

**REQUEST FOR (OIL) - (GAS) ALLOWABLE**

New Well  
Recompletion

This form shall be submitted by the operator before an initial allowable will be assigned to any completed Oil or Gas well. Form C-104 is to be submitted in QUADRUPLICATE to the same District Office to which Form C-101 was sent. The allowable will be assigned effective 7:00 A.M. on date of completion or recompletion, provided this form is filed during calendar month of completion or recompletion. The completion date shall be that date in the case of an oil well when oil is delivered into the stock tanks. Gas must be reported on 15.025 psia at 60° Fahrenheit.

Farmington, New Mexico February 17, 1954  
(Place) (Date)

WE ARE HEREBY REQUESTING AN ALLOWABLE FOR A WELL KNOWN AS:

El Paso Natural Gas Company Hancock, Well No. 1-A, in 1/4 NE 1/4,  
(Company or Operator) (Lease)  
H, Sec. 35, T. 28N, R. 9W, NMPM, Blanco Pool  
(Unit)  
San Juan County. Date Spudded. 4-12-52, Date Completed. 6-10-52

Please indicate location:

			X

1850'N, 1090'E

**Casing and Cementing Record**

Size	Feet	Sax
9-5/8"	173	125
7	3885	300

Elevation. 6123'G. Total Depth. 4784', P.B.

Top oil/gas pay. 3932' Prod. Form. Mesa Verde

Casing Perforations: None or

Depth to Casing shoe of Prod. String. 3885'

Natural Prod. Test. BOPD

based on. bbls. Oil in. Hrs. Mins.

Test after acid or shot. BOPD

Based on. bbls. Oil in. Hrs. Mins.

Gas Well Potential. 1,250 MCF/D

Size choke in inches.

Date first oil run to tanks or gas to Transmission system:

Transporter taking Oil or Gas: El Paso Natural Gas Company

Remarks:

I hereby certify that the information given above is true and complete to the best of my knowledge.

Approved. 3-1-1954, El Paso Natural Gas Company  
(Company or Operator)

OIL CONSERVATION COMMISSION

By: John J. Chenduckar Title: Petroleum Engineer  
(Signature)  
Send Communications regarding well to:

Name: E. J. Coel,  
Box 997,  
Address: Farmington, N.M.

NEW MEXICO  
OIL CONSERVATION COMMISSION

Gas Well Plat

Date March 11, 1954

El Paso Natural Gas Company

Hancock

1-A

Operator

Lease

Well No.

Name of Producing Formation Mesa Verde

Pool Blanco-LaPlata

No. Acres Dedicated to the Well 320

Indicate land status and show ownership. Federal

SECTION 35

TOWNSHIP 28N

RANGE 9W

		NM 04209	

I hereby certify that the information given above is true and complete to the best of my knowledge.

Name [Signature]

Position Petroleum Engineer

Representing El Paso Natural Gas Co.

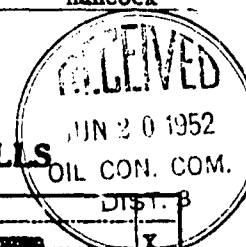
Address Fermington, New Mexico

(over)

COPY FOR  
STATE OF NEW MEXICO  
**OIL CONSERVATION  
COMMISSION**  
SUBMIT IN TRIPlicate TO  
DISTRICT OFFICE

UNITED STATES  
DEPARTMENT OF THE INTERIOR  
GEOLOGICAL SURVEY

Land Office New Mexico  
Lease No. 04209  
Unit Hancock



**SUNDRY NOTICES AND REPORTS ON WELLS**

NOTICE OF INTENTION TO DRILL.....	SUBSEQUENT REPORT OF WATER SHUT-OFF.....	
NOTICE OF INTENTION TO CHANGE PLANS.....	SUBSEQUENT REPORT OF SHOOTING OPERATIONS.....	<input checked="" type="checkbox"/>
NOTICE OF INTENTION TO TEST WATER SHUT-OFF.....	SUBSEQUENT REPORT OF ALTERING CASING.....	
NOTICE OF INTENTION TO RE-DRILL OR REPAIR WELL.....	SUBSEQUENT REPORT OF REDRILLING OR REPAIR.....	
NOTICE OF INTENTION TO SHOOT OR ACIDIZE.....	SUBSEQUENT REPORT OF ABANDONMENT.....	
NOTICE OF INTENTION TO PULL OR ALTER CASING.....	SUPPLEMENTARY WELL HISTORY.....	
NOTICE OF INTENTION TO ABANDON WELL.....		

(INDICATE ABOVE BY CHECK MARK NATURE OF REPORT, NOTICE, OR OTHER DATA)

June 19, 1952

Well No. 1-A is located 1850 ft. from N line and 1090 ft. from E line of sec. 35.

SE NE Sec. 35 28N 9W N M P M  
(4 Sec. and Sec. No.) (Twp.) (Range) (Meridian)  
Blanco-La Plata San Juan New Mexico  
(Field) (County or Subdivision) (State or Territory)

The elevation of the derrick floor above sea level is 6133 ft.

**DETAILS OF WORK**

(State names of and expected depths to objective sands; show sizes, weights, and lengths of proposed casings; indicate muddling jobs, cementing points, and all other important proposed work)

June 5, 1952: Total Depth 4778' vertical hole.

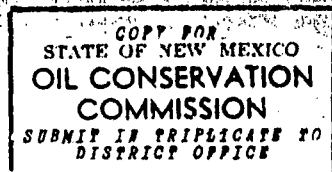
Shot well with 1350 quarts of SNG from 4068 to 4778'.  
Natural gage 900 MCF/D.

I understand that this plan of work must receive approval in writing by the Geological Survey before operations may be commenced.

Company EL PASO NATURAL GAS COMPANY

Address P. O. Box 997  
Farmington, New Mexico

Original Signed  
By L. F. Stone  
Title Petroleum Engineer



UNITED STATES  
DEPARTMENT OF THE INTERIOR  
GEOLOGICAL SURVEY

Land Office New Mexico  
Lease No. 24209  
Unit Hancock



SUNDRY NOTICES AND REPORTS ON WELLS

NOTICE OF INTENTION TO DRILL.....	SUBSEQUENT REPORT OF WATER SHUT-OFF.....	DIST. 3
NOTICE OF INTENTION TO CHANGE PLANS.....	SUBSEQUENT REPORT OF SHOOTING OR ACIDIZING.....	X
NOTICE OF INTENTION TO TEST WATER SHUT-OFF.....	SUBSEQUENT REPORT OF ALTERING CASING.....	
NOTICE OF INTENTION TO RE-DRILL OR REPAIR WELL.....	SUBSEQUENT REPORT OF REDRILLING OR REPAIR.....	
NOTICE OF INTENTION TO SHOOT OR ACIDIZE.....	SUBSEQUENT REPORT OF ABANDONMENT.....	
NOTICE OF INTENTION TO PULL OR ALTER CASING.....	SUPPLEMENTARY WELL HISTORY.....	
NOTICE OF INTENTION TO ABANDON WELL.....		

(INDICATE ABOVE BY CHECK MARK NATURE OF REPORT, NOTICE, OR OTHER DATA)

June 3, 1952

Well No. 1-A is located 1350 ft. from [N] line and 1090 ft. from [E] line of sec. 35

SE NE Section 35  
(4 Sec. and Sec. No.)

28N  
(Twp.)

9W  
(Range)

N. M. P. M.  
(Meridian)

Blanco-La Plata  
(Field)

San Juan  
(County or Subdivision)

New Mexico  
(State or Territory)

The elevation of the derrick floor above sea level is 6133 ft.

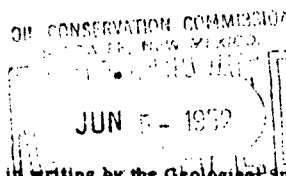
DETAILS OF WORK

(State names of and expected depths to objective sands; show sizes, weights, and lengths of proposed casings; indicate muddling jobs, cementing points, and all other important proposed work)

First directional hole approximately 105' from vertical. Total depth 4785'.

Shot well from 3924' to 4784' with 1710 quarts of S. N. G.

Natural gauge 50 MCF/D.



I understand that this plan of work must receive approval in writing by the Geological Survey before operations may be commenced.

Company EL PAEO NATURAL GAS COMPANY

Address P. O. Box 997

Farmington, New Mexico

By Original Signed E. J. Cool

Title Petroleum Engineer



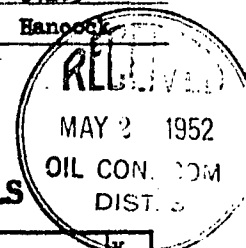
COPY FOR  
STATE OF NEW MEXICO  
OIL CONSERVATION  
COMMISSION  
SUBMIT IN TRIPPLICATE TO  
DISTRICT OFFICE

UNITED STATES  
DEPARTMENT OF THE INTERIOR  
GEOLOGICAL SURVEY

Land Office New Mexico

Lease No. 04209

Unit Hancock



SUNDRY NOTICES AND REPORTS ON WELLS

NOTICE OF INTENTION TO DRILL.....	SUBSEQUENT REPORT OF WATER SHUT-OFF.....	<input checked="" type="checkbox"/>
NOTICE OF INTENTION TO CHANGE PLANS.....	SUBSEQUENT REPORT OF SHOOTING OR ACIDIZING.....	
NOTICE OF INTENTION TO TEST WATER SHUT-OFF.....	SUBSEQUENT REPORT OF ALTERING CASING.....	
NOTICE OF INTENTION TO RE-DRILL OR REPAIR WELL.....	SUBSEQUENT REPORT OF REDRILLING OR REPAIR.....	
NOTICE OF INTENTION TO SHOOT OR ACIDIZE.....	SUBSEQUENT REPORT OF ABANDONMENT.....	
NOTICE OF INTENTION TO PULL OR ALTER CASING.....	SUPPLEMENTARY WELL HISTORY.....	
NOTICE OF INTENTION TO ABANDON WELL.....		

(INDICATE ABOVE BY CHECK MARK NATURE OF REPORT, NOTICE, OR OTHER DATA)

April 28, 1952

Well No. 1-A is located 1850 ft. from N line and 1090 ft. from E line of sec. 35.

SE NE Section 35  
(M Sec. and Sec. No.)

28N  
(Twp.)

OH  
(Range)

N. M. P. M.  
(Meridian)

Blanco - La Plata  
(Field)

San Juan  
(County or Subdivision)

New Mexico  
(State or Territory)

The elevation of the derrick floor above sea level is 6133 ft.

DETAILS OF WORK

(State names of and expected depths to objective sands; show sizes, weights, and lengths of proposed casings; indicate muddling jobs, cementing points, and all other important proposed work)

On April 27, 1952, total depth 3885'.

Ran 111 joints of 23# J-55 7" O.D. casing (3875') set at 3885' with 300 sacks regular cement. Top of cement by temperature survey 2200'.

Held 900# for eight hours.

I understand that this plan of work must receive approval in writing by the Geological Survey before operations may be commenced.

Company EL PASO NATURAL GAS COMPANY

Address P. O. Box 997

Fermington, New Mexico

By ORIGINAL SIGNED E. J. COEL

Title Petroleum Engineer

COPY FOR  
STATE OF NEW MEXICO  
OIL CONSERVATION  
COMMISSION  
SUBMIT IN TRIPPLICATE TO  
DISTRICT OFFICE

UNITED STATES  
DEPARTMENT OF THE INTERIOR  
GEOLOGICAL SURVEY

Land Office Santa Fe  
Lease No. NM 04209  
Unit Nancock



SUNDRY NOTICES AND REPORTS ON WELLS

NOTICE OF INTENTION TO DRILL.....	SUBSEQUENT REPORT OF WATER SHUT-OFF.....
NOTICE OF INTENTION TO CHANGE PLANS.....	SUBSEQUENT REPORT OF SHOOTING OR ACIDIZING.....
NOTICE OF INTENTION TO TEST WATER SHUT-OFF.....	SUBSEQUENT REPORT OF ALTERING CASING.....
NOTICE OF INTENTION TO RE-DRILL OR REPAIR WELL.....	SUBSEQUENT REPORT OF REDRILLING OR REPAIR.....
NOTICE OF INTENTION TO SHOOT OR ACIDIZE.....	SUBSEQUENT REPORT OF ABANDONMENT.....
NOTICE OF INTENTION TO PULL OR ALTER CASING.....	SUPPLEMENTARY WELL HISTORY.....
NOTICE OF INTENTION TO ABANDON WELL.....	

(INDICATE ABOVE BY CHECK MARK NATURE OF REPORT, NOTICE, OR OTHER DATA)

April 14, 1952

Well No. 1-A is located 1850 ft. from N line and 1090 ft. from E line of sec. 35

SE NE Section 35 28N 9W N. M. P. M.  
(4 Sec. and Sec. No.) (Twp.) (Range) (Meridian)

Blanco - La Plata San Juan New Mexico  
(Field) (County or Subdivision) (State or Territory)

The elevation of the derrick floor above sea level is 6133 ft.

DETAILS OF WORK

(State names of and expected depths to objective sands; show sizes, weights, and lengths of proposed casings; indicate muddling jobs, cementing points, and all other important proposed work)

Spud April 12, 1952. Total depth 173'.

Ran five joints of 9-5/8" Spiral Weld casing .250 wall (161') set at 173' with 125 sacks regular cement circulated to surface.

Held 500# for 30 minutes.

I understand that this plan of work must receive approval in writing by the Geological Survey before operations may be commenced.

Company EL PASO NATURAL GAS COMPANY

Address P. O. Box 997

Farmington, New Mexico

ORIGINAL SIGNED E. J. COEL

By \_\_\_\_\_

Title Petroleum Engineer



L. M. O. C. C.

COPY FOR  
STATE OF NEW MEXICO  
**OIL CONSERVATION  
COMMISSION**  
SUBMIT IN TRIPLICATE TO  
DISTRICT OFFICE

UNITED STATES  
DEPARTMENT OF THE INTERIOR  
GEOLOGICAL SURVEY

Land Office New Mexico

Lease No. 04209

Unit Hancock

RECEIVED

APR 8 1952

U. S. GEOLOGICAL SURVEY  
FARMINGTON, N. M.

**SUNDRY NOTICES AND REPORTS ON WELLS**

NOTICE OF INTENTION TO DRILL.....	<input checked="" type="checkbox"/>	SUBSEQUENT REPORT OF WATER SHUT-OFF.....	
NOTICE OF INTENTION TO CHANGE PLANS.....		SUBSEQUENT REPORT OF SHOOTING OR ACIDIZING.....	
NOTICE OF INTENTION TO TEST WATER SHUT-OFF.....		SUBSEQUENT REPORT OF ALTERING CASING.....	
NOTICE OF INTENTION TO RE-DRILL OR REPAIR WELL.....		SUBSEQUENT REPORT OF REDRILLING OR REPAIR.....	
NOTICE OF INTENTION TO SHOOT OR ACIDIZE.....		SUBSEQUENT REPORT OF ABANDONMENT.....	
NOTICE OF INTENTION TO PULL OR ALTER CASING.....		SUPPLEMENTARY WELL HISTORY.....	
NOTICE OF INTENTION TO ABANDON WELL.....			

(INDICATE ABOVE BY CHECK MARK NATURE OF REPORT, NOTICE, OR OTHER DATA)

April 7, 1952

Well No. 1-A is located 1850 ft. from N line and 1090 ft. from E line of sec. 35

SE NE Section 35 28N 9W N. M. P. M.  
(4 Sec. and Sec. No.) (Twp.) (Range) (Meridian)

Blanco - La Plata San Juan New Mexico  
(Field) (County or Subdivision) (State or Territory)

The elevation of the derrick floor above sea level is 6133 ft.

**DETAILS OF WORK**

(State names of and expected depths to objective sands; show sizes, weights, and lengths of proposed casings; indicate muddling jobs, cementing points, and all other important proposed work)

It is intended to drill a well through the Mesaverde section, drilling the pay section with gas circulation, and to shoot the entire Mesaverde with two quarts per foot. Total depth 4775'.

**Casing Program:**

9-5/8" at 100' with cement to surface.

7 " at 3865' with 300 sacks regular cement.

E of Section 35 is dedicated to this well.

I understand that this plan of work must receive approval in writing by the Geological Survey before operations may be commenced.

Company EL PASO NATURAL GAS COMPANY

Address P. O. Box 997

Farmington, New Mexico

By ORIGINAL SIGNED E. J. COEL

Title Petroleum Engineer

U. S. LAND OFFICE San Antonio

SERIAL NUMBER 01009

LEASE OR PERMIT TO PROCEED

UNITED STATES  
DEPARTMENT OF THE INTERIOR

GEOLOGICAL SURVEY JUL 9 1952

U. S. GEOLOGICAL SURVEY  
FARMINGTON, N. M.

LOG OF OIL OR GAS WELL

LOCATE WELL CORRECTLY

Company El Paso Natural Gas Company Address Box 997, Farmington, New Mexico  
Lessor or Tract Section 35 Field Blanco State New Mexico  
Well No. 1 Sec. 35 T. 23N R. 7W Meridian N. M. P. M. County San Juan  
Location 1000 ft. S. of N. Line and 1000 ft. W. of E. Line of Section 35 Elevation 6133'  
(Denote feet relative to sea level)

The information given herewith is a complete and correct record of the well and all work done thereon so far as can be determined from all available records.

Signed L. F. Stone

Date July 7, 1952 Title Patrolman Engineer

The summary on this page is for the condition of the well at above date.

Commenced drilling April 18, 1952 Finished drilling June 3, 1952

OIL OR GAS SANDS OR ZONES

(Denote gas by G)

No. 1, from 3930 to 4700 (G) No. 4, from 4700 to 4775  
No. 2, from 4700 to 4775 No. 5, from 4775 to 4775  
No. 3, from 4775 to 4775 No. 6, from 4775 to 4775

IMPORTANT WATER SANDS

No. 1, from 1149 to 1407 No. 3, from 1407 to 1407  
No. 2, from 1407 to 1407 No. 4, from 1407 to 1407

CASING RECORD

Size casing	Weight per foot	Thickness per inch	Make	Amount	Kind of shoe	Cut and pulled from	Perforated		Purpose
							From	To	
9-5/8"	23.14	0.250	Spence Special Hard	161'	Arco				Surface
7"	13.30	0.219	Spence	3073'	Arco				Production
2 1/2"	1.34	0.109	Spence	4775'	Arco		4775'	4775'	Production

MUDDING AND CEMENTING RECORD

Size casing	Wells set	Number sacks of cement	Method used	Mud gravity	Amount of mud used
9-5/8"	171'	135	Single		
7"	3073'	300	Single		

PLUGS AND ADAPTERS

Heaving plug—Material \_\_\_\_\_ Length \_\_\_\_\_ Depth set \_\_\_\_\_  
Adapters—Material \_\_\_\_\_ Size \_\_\_\_\_

SHOOTING RECORD

Size	Shell used	Explosive used	Quantity	Date	Depth shot	Depth cleaned out
Quartz	Regular	S. H. G.	1710	5-29	300'-475'	475' - Directional Hole
Quartz	Regular	S. H. G.	1850	5-5	400'-475'	475' - Vertical Hole

TOOLS USED

Rotary tools were used from 0 feet to 3805' feet, and from 3805' feet to 4785' feet D.H.  
Cable tools were used from \_\_\_\_\_ feet to \_\_\_\_\_ feet, and from \_\_\_\_\_ feet to \_\_\_\_\_ feet V.H.

DATES

June 10, 1952 Put to producing \_\_\_\_\_

# CASING RECORD

Casing	Weight per foot	Threads per foot	Make	Amount	Kind of shoe	Cut and pulled from	Perforated		Purpose
							From	To	
9-5/8"	25.4	4	Amco Spiral Weld	161'	Amco				Surface
7"	18.4	4	Amco	1075'	Amco				Production
2 1/2"	11.75	6	Amco	1041'	Amco		8710'	8712'	Prod. tubing

## MUDDING AND CEMENTING RECORD

Casing	Weight	Number sacks of cement	Method used	Mud gravity	Amount of mud used
9-5/8"	175'	123	Single		
7"	3003'	300	Single		

## PLUGS AND ADAPTERS

Heaving plug—Material \_\_\_\_\_ Length \_\_\_\_\_ Depth set \_\_\_\_\_  
 Adapters—Material \_\_\_\_\_ Size \_\_\_\_\_

## SHOOTING RECORD

Shot	Shell used	Explosive used	Quantity	Date	Depth shot	Depth cleaned out
Course	Regular	S.H.C.	1710	8-19	3003-4750'	4750' - Directional Hole
Course	Regular	S.H.C.	1370	8-1	4003-4770'	4770' - Vertical Hole

## TOOLS USED

Rotary tools were used from \_\_\_\_\_ feet to \_\_\_\_\_ feet, and from \_\_\_\_\_ feet to \_\_\_\_\_ feet D.E.  
 Cable tools were used from \_\_\_\_\_ feet to \_\_\_\_\_ feet, and from \_\_\_\_\_ feet to \_\_\_\_\_ feet V.E.

## DATES

\_\_\_\_\_ Put to producing \_\_\_\_\_  
 The production for the first 24 hours was \_\_\_\_\_ barrels of fluid of which \_\_\_\_\_ % was oil, \_\_\_\_\_ % emulsion; \_\_\_\_\_ % water; and \_\_\_\_\_ % sediment. Gravity, °Bé \_\_\_\_\_  
 If gas well, cu. ft. per 24 hours \_\_\_\_\_ Gallons gasoline per 1,000 cu. ft. of gas \_\_\_\_\_  
 Rock pressure, lbs. per sq. in. \_\_\_\_\_

## EMPLOYEES

\_\_\_\_\_, Driller \_\_\_\_\_, Driller  
 \_\_\_\_\_, Driller \_\_\_\_\_, Driller

## FORMATION RECORD

FROM	TO	TOTAL FEET	FORMATION
0	730	730	tan coarse-grn. ss. v/thin shale breaks.
730	870	140	varieg. shales v/thin ss. breaks.
870	1449	579	tan to gray coarse-grn. ss. interbedded v/gray shales.
1449	1487	38	o/s Alamo ss. white coarse-grn. sand. 2/0.0 Alamo 1449.
1487	2077	590	Hirtland fm. Gray shale interbedded v/tight gray fine-grn. ss. 2/Hirtland 1487.
2077	2326	249	Fruitland fm. Gray carb. shales, scattered scale & gray, tight, fine-grn. ss. 2/Fruitland 2077.
2326	2392	66	Pictured Cliffs fm. Gray, fine-grained, tight, varicolored soft ss. 2/Pictured Cliffs 2326.
2392	3003	1540	Lewis fm. Gray to white coarse shale v/silty to shaly ss. breaks. 2/Lewis 2392.
3003	4003	70	Cliff House fm. Gray, fine-grn. sand. sil. ss. 2/Cliff House 3003.
4003	4590	587	Manace fm. Gray, fine-grn. sand, carb. shales & coal. 2/Manace 4003.
4590	4700	110	Point Lookout fm. Gray, very fine sil. ss. v/frequent shale breaks. 2/Point Lookout 4590.
4700	4750	50	Manace fm. Gray carb. shale. 2/Manace 4700.

(OVER)

10-12004-2