

**JAMES BRUCE**  
ATTORNEY AT LAW

POST OFFICE BOX 1056  
SANTA FE, NEW MEXICO 87504

369 MONTEZUMA, NO. 213  
SANTA FE, NEW MEXICO 87501

(505) 982-2043 (PHONE)  
(505) 982-2151 (FAX)

jamesbruc@aol.com

RECEIVED

DEC 04 2003

OIL CONSERVATION  
DIVISION

December 2, 2003

Michael E. Stogner  
Oil Conservation Division  
1220 South St. Francis Drive  
Santa Fe, New Mexico 87505

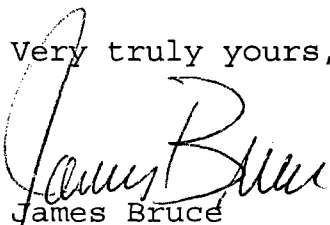
Re: Bass Enterprises Production Co.  
Application for administrative approval of:

<u>Well:</u>	James Ranch Unit Well No. 4
<u>Location:</u>	2180 feet FSL & 330 feet FWL
<u>Well Unit:</u>	W $\frac{1}{2}$ of Section 6, Township 23 South, Range 31 East, N.M.P.M.

Dear Mr. Stogner:

Enclosed regarding the above application is a map of the Atoka Participating Area of the James Ranch Unit. As you can see, the well unit and the offset acreage are in the participating area, and thus have common ownership.

Very truly yours,

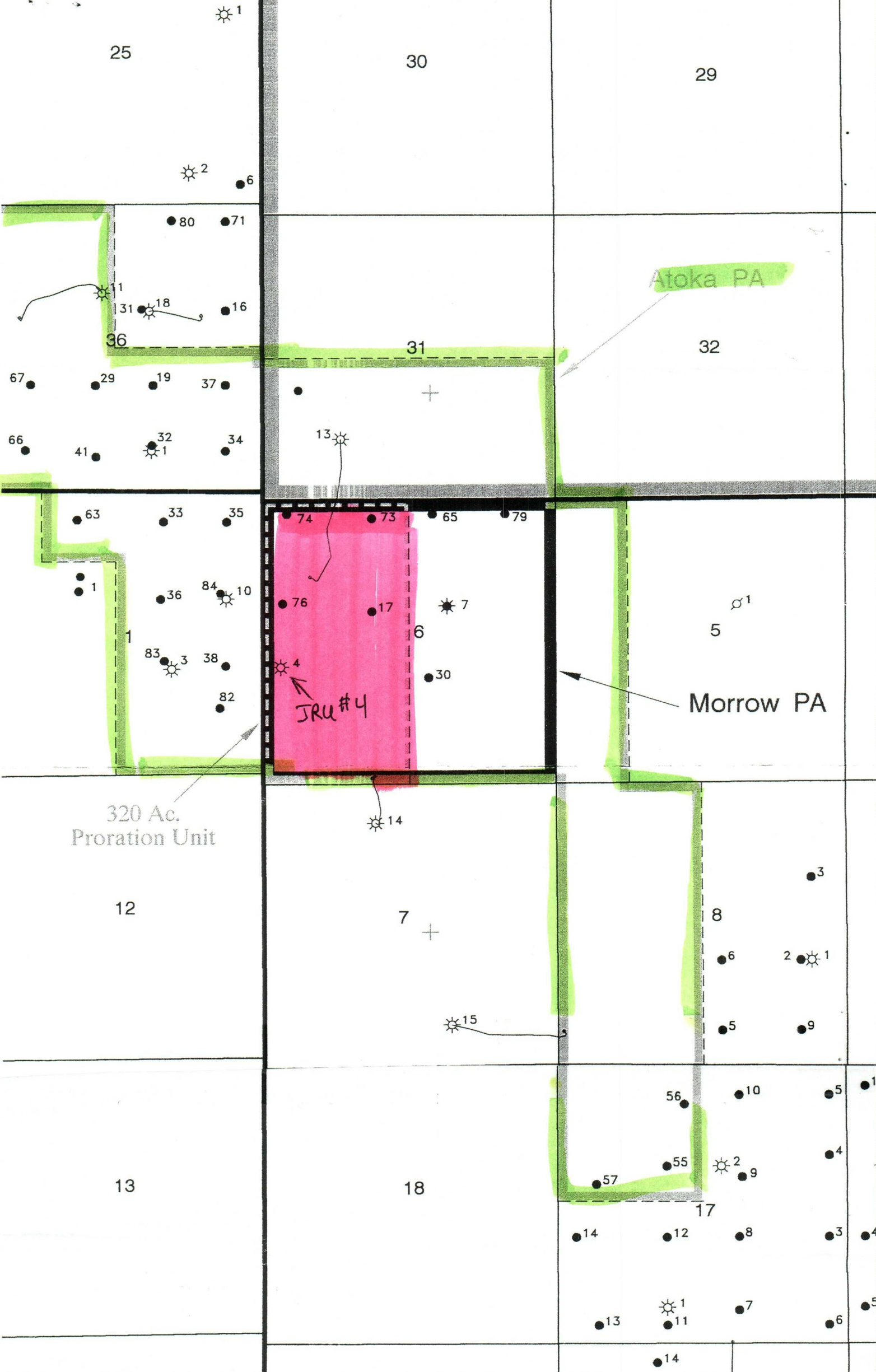


James Bruce

Attorney for Bass Enterprises Production Co.

WASTE ISOLATION PILOT PLANT AREA

Revised 2-12-92



320 Ac.  
Proration Unit

Atoka PA

Morrow PA

JRU #4



Bass Enterprises Production Co.

JAMES RANCH UNIT

Eddy County, New Mexico

Participating Areas

0 2000 4000 6000

SCALE IN FEET

DATE: 11-24-03 INTER/DRAFT. BY: WB/PO FILE: JRU Land pg4.dwg