

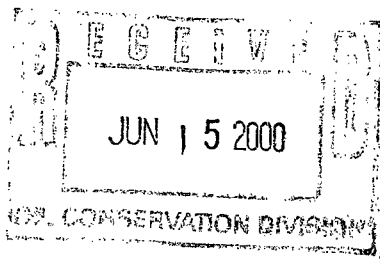
Triumph Exploration, Inc.

1608 N. BIG SPRING
P. O. BOX 10280
MIDLAND, TEXAS 79702

(915)687-4220

FAX(915)687-4288

June 15, 2000



Mr. Mark Ashley
Oil Conservation Division
P.O. Box 2088
Santa Fe, NM 87504-2088

Dear Mr. Ashley:

Triumph Exploration with this letter is requesting an increase of our maximum allowed injection pressure on our Tonto Micro Emulsion Flood. Based on our Step Rate Test performed on the Tonto #2 WIW on June 13, 2000, we hereby request our injection pressure maximum to be increased to the maximum pressure allowed on the Tonto #2, #7, and #9-Y WIW's. We request the new maximum pressure to be applied to all of our current and future WIW on our Tonto Lease.

Thank you for your assistance in this matter. If you have any questions, please feel free to contact the undersigned at the telephone or fax number on the letterhead.

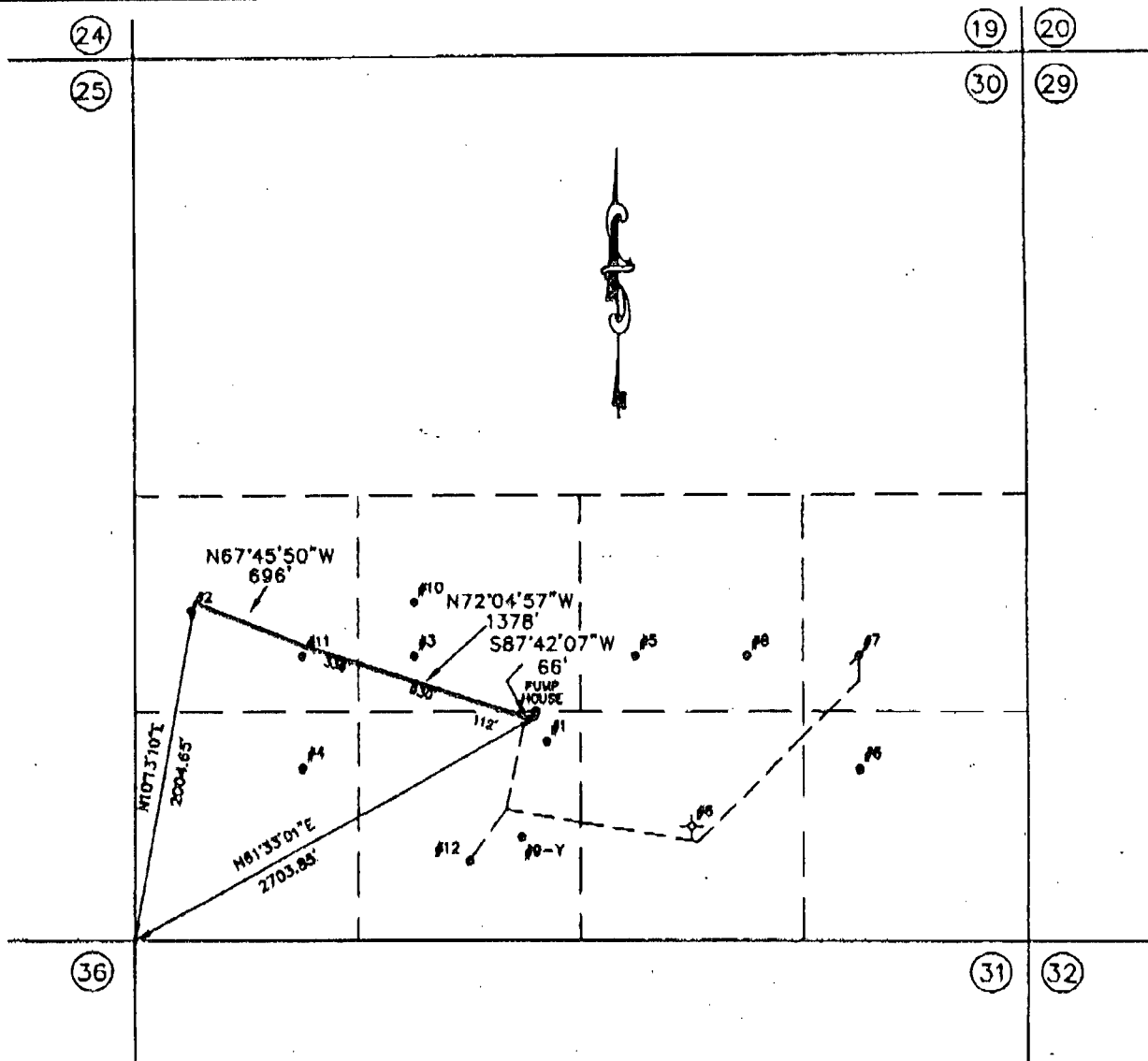
Sincerely,

Triumph Exploration, Inc.

Stella Swanson, CPL

Tonto 002 30-025-25420
Tonto 007 30-025-25897
Tonto 0094 30-025-27190

59480 Tonto; Yates-Seven Rivers So.
28531 Tonto



FIELD NOTE DESCRIPTION OF THE SURVEY OF THE CENTERLINE OF A 4-1/2" FIBERGLASS WATER INJECTION LINE FOR TRIUMPH EXPLORATION, INC. IN THE SOUTH 1/2 OF SECTION 30, T-19-S, R-33-E, LEA COUNTY, NEW MEXICO, AS FOLLOWS:

BEGINNING AT A POINT NEAR A PUMP HOUSE IN THE SE/4 OF THE SW/4 OF SAID SECTION 30, SAID POINT LOCATED 2703.85 FEET N.61°33'01"E. FROM THE SW CORNER OF SAID SECTION 30;

THENCE S.87°42'07"W. 66 FEET TO A DEFLECTION RIGHT;

THENCE N.72°04'57"W., AT 112 FEET PASS INTO THE NE/4 OF THE SW/4 OF SAID SECTION 30, AT 1042 FEET PASS INTO THE NW/4 OF THE SW/4 OF SAID SECTION 30, IN ALL A TOTAL DISTANCE OF 1378 FEET TO A DEFLECTION RIGHT;

THENCE N.67°45'50"W. 696 FEET TO A POINT NEAR WELL NO. 2 FOR THE END OF THIS PORTION, SAID POINT LOCATED 2004.65 FEET N.10°13'10"E. FROM THE SW CORNER OF SAID SECTION 30.

TOTAL THIS SURVEY:

SE/4 OF SW/4	178 FEET = 10.79 RODS
NE/4 OF SW/4	930 FEET = 56.36 RODS
NW/4 OF SW/4	1032 FEET = 62.55 RODS
TOTAL	2140 FEET = 129.70 RODS

SURVEY PLAT

THE CENTERLINE OF A 4-1/2"
FIBERGLASS WATER INJECTION LINE
FOR TRIUMPH EXPLORATION, INC.
IN THE SOUTH 1/2 OF
SECTION 30, T-19-S, R-33-E,
LEA COUNTY, NEW MEXICO

SCHUMANN ENGINEERING CO., INC.

REGISTERED PROFESSIONAL LAND SURVEYORS
LICENSED STATE LAND SURVEYORS

REGISTERED PROFESSIONAL CIVIL ENGINEERS
TEXAS and NEW MEXICO

Civil Engineering ~ Land Surveying

408 N. PECOS STREET - P. O. BOX 504
MIDLAND, TEXAS 79702-0504

Office (915) 684-5548
Fax (915) 684-6973

THE UNDERSIGNED DOES HEREBY CERTIFY THAT THIS SURVEY WAS THIS DAY MADE ON THE GROUND BY ME OR UNDER MY SUPERVISION AND THAT THIS PLAT IS A CORRECT REPRESENTATION THEREOF.

DATED THIS 19TH DAY OF APRIL, 1999

MAX A. SCHUMANN, JR.
CERT NO. 1510

SCALE: 1"=1000'

PROJECT: 64865TEI
JOB NO: 64,865-A

Facsimile Cover Sheet

To: Mark Ashley
Company: OCD

Phone:

Fax: (505) 827-8177

From: Stella Swanson
Company: Quay Valley

Phone: (915) 687-4220

Fax: (915) 687-4288

Date: June 14, 2000

Pages including this cover page: 5

Comments:

VERBAL 6-15-00 TO STELLA SWANSON.
1645 PSE.
TEST ON TONTO #2
APPLY TO: TONTO #7 + #9 ALSO.
MM

WAITING ON LETTER
FROM QUAY VALLEY.

TABLE OF CONTENTS

SECTION I CONTENTS

SECTION II SEQUENCE OF EVENTS

SECTION III DATA REPORT

SECTION IV CHART

Production Testing Services

COMPANY: Triumph Exploration
 WELL: Tonto Fed. #2
 COMPANY REP: Jason Robinson
 PERFORATIONS: 2960 - 3104 OH

PACKER DEPTH:

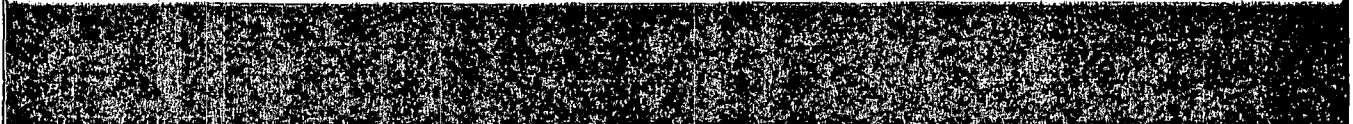
SERVICE DATES: 6/13/00
 TEST TYPE: Step Rate Injection
 PTS TECHNICIANS: J. Smith
 BHP GAUGE DEPTH:

06/13/00	11:10	Start Test
	11:16	
	11:20	
	11:26	Increase injection Rate
	11:30	
	11:36	
	11:40	Increase injection Rate
	11:46	
	11:50	
	11:56	Increase injection Rate
	12:00	
	12:06	
	12:10	Increase injection Rate
	12:16	
	12:20	
	12:26	Increase injection Rate
	12:30	
	12:36	
	12:40	Increase injection Rate
	12:46	
	12:50	
	12:56	Increase injection Rate
	13:00	
	13:06	
	13:10	Increase injection Rate
	13:16	
	13:20	
	13:26	
	13:26	Start Falloff
	13:27	End of test

Production Testing Services

COMPANY : Triumph Exploration
WELL: Tonto Fed. #2
COMPANY REP: Jason Robinson
PERFORATIONS: 2900 - 3104 OH **PACKER DEPTH:**

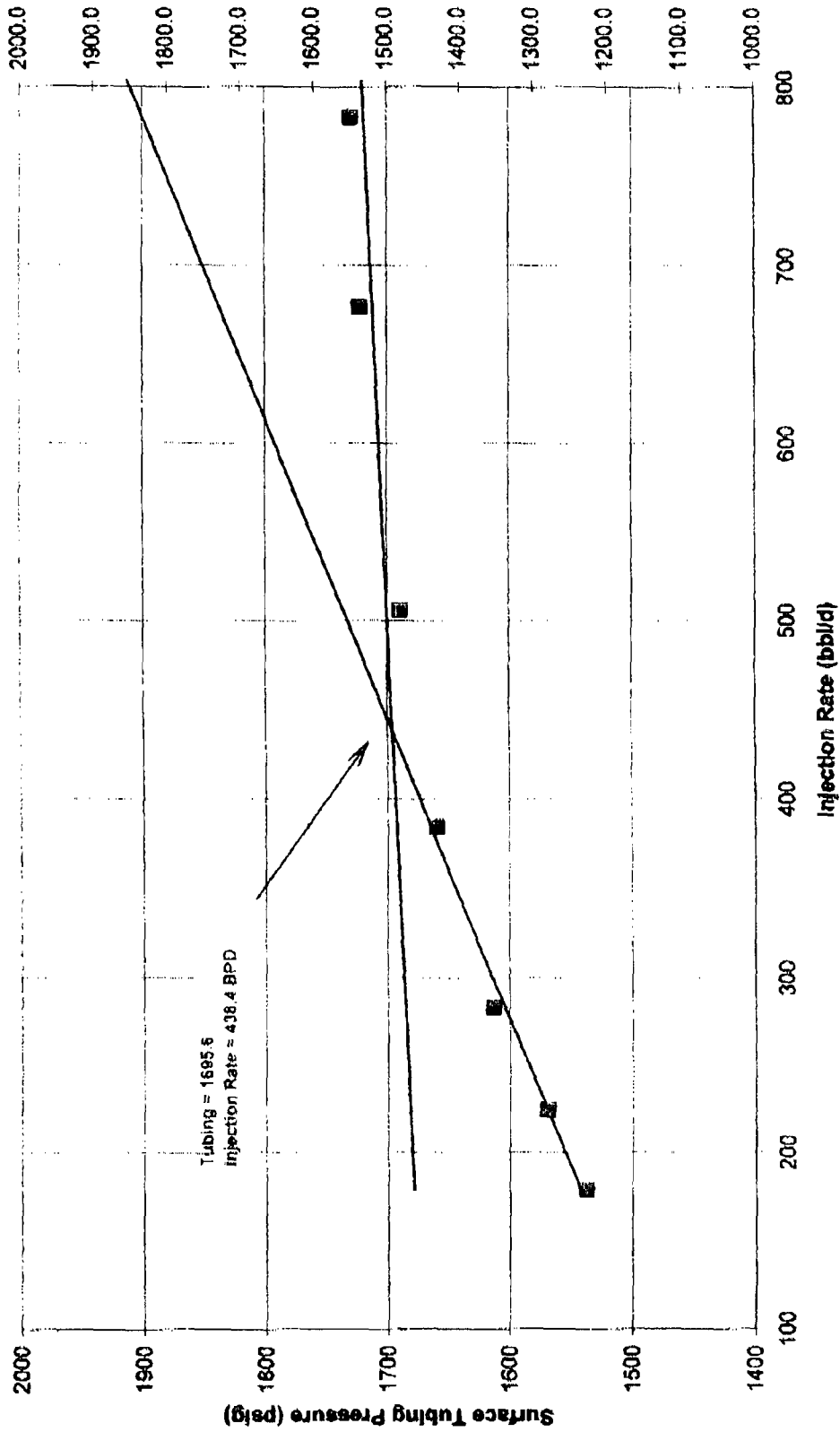
SERVICE DATES : 6/13/00
TEST TYPE : Step Rate Injection
PTS TECHNICIANS : J. Smith
BHP GAUGE DEPTH:



	11:10							
	11:15	1504.0	0.6	170.2	1.571	1502.4	4.96	
	11:20	1526.0	1.2	183.6	1.807	1524.2	5.36	
1	11:25	1537.0	1.9	181.4	1.768	1535.2	5.29	
	11:30	1590.0	2.6	221.9	2.566	1587.4	6.47	
	11:35	1523.0	3.4	219.5	2.515	1520.5	6.40	
2	11:40	1609.0	4.2	230.7	2.758	1606.2	6.73	
	11:45	1595.0	5.2	280.0	3.946	1591.1	8.17	
	11:50	1567.0	6.2	286.7	4.122	1562.9	8.36	
3	11:55	1613.0	7.1	282.2	4.003	1609.0	8.23	
	12:00	1641.0	8.5	387.5	7.198	1633.8	11.30	
	12:05	1643.0	9.8	383.4	7.057	1635.9	11.18	
4	12:10	1859.0	11.1	383.0	7.044	1652.0	11.17	
	12:15	1659.0	12.9	504.0	11.705	1647.3	14.70	
	12:20	1645.0	14.7	506.2	11.800	1633.2	14.76	
5	12:25	1889.0	16.4	508.4	11.895	1677.1	14.83	
	12:30	1699.0	18.8	694.4	21.177	1677.8	20.25	
	12:35	1714.0	21.2	669.7	19.805	1694.2	19.53	
6	12:40	1722.0	23.5	667.5	19.685	1702.3	19.47	
	12:45	1719.0	26.2	788.4	26.784	1692.2	23.00	
	12:50	1921.0	28.9	772.8	25.812	1895.2	22.54	
7	12:55	1729.0	31.6	788.4	26.784	1702.2	23.00	
	13:00	1744.0	35.0	978.8	39.965	1704.0	28.55	
	13:05	1712.0	38.5	985.6	40.480	1671.5	28.75	
8	13:10	1721.0	41.8	969.9	39.295	1681.7	28.29	
	13:15	1748.0	46.1	1229.7	60.957	1687.0	35.87	
	13:20	1732.0	50.4	1245.4	62.404	1669.6	36.32	
9	13:25	1750.0	55.0	1308.0	68.331	1681.7	38.15	
	13:26	7.8						
	13:27	0.0						

Production Testing Services

Step Rate Injection Test



1247 Broadway Pl.
P.O. Box 7126
Hobbs, NM 88240

Phone: (806) 391-8703
Fax: (806) 393-4763



Step Rate Injection Test Report
for
Triumph Exploration
Tonto Fed. #2

TABLE OF CONTENTS

SECTION I	CONTENTS
SECTION II	SEQUENCE OF EVENTS
SECTION III	DATA REPORT
SECTION IV	CHART

Production Testing Services

COMPANY : Triumph Exploration
WELL: Tonto Fed. #2
COMPANY REP: Jason Robinson
PERFORATIONS: 2900 - 3104 OH

PACKER DEPTH:

SERVICE DATES : 6/13/00
TEST TYPE : Step Rate Injection
PTS TECHNICIANS : J. Smith
BHP GAUGE DEPTH:

DATE	TIME	REMARKS
06/13/00	11:10	Start Test
	11:15	
	11:20	
	11:25	Increase injection Rate
	11:30	
	11:35	
	11:40	Increase injection Rate
	11:45	
	11:50	
	11:55	Increase injection Rate
	12:00	
	12:05	
	12:10	Increase injection Rate
	12:15	
	12:20	
	12:25	Increase injection Rate
	12:30	
	12:35	
	12:40	Increase injection Rate
	12:45	
	12:50	
	12:55	Increase injection Rate
	13:00	
	13:05	
	13:10	Increase injection Rate
	13:15	
	13:20	
	13:25	
	13:26	Start Falloff
	13:27	End of test

Production Testing Services

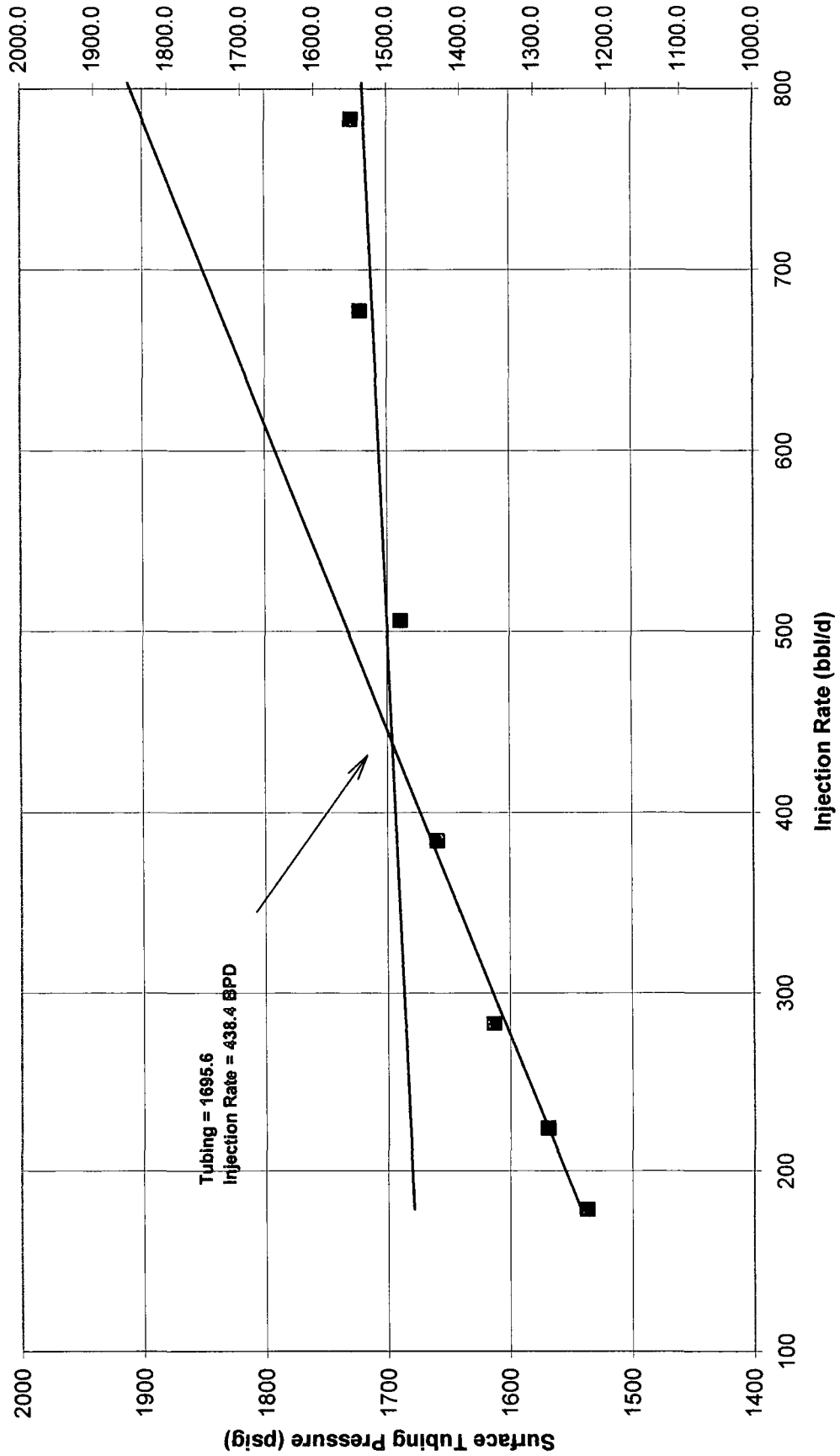
COMPANY : Triumph Exploration
 WELL: Tonto Fed. #2
 COMPANY REP: Jason Robinson
 PERFORATIONS: 2900 - 3104 OH PACKER DEPTH:

SERVICE DATES : 6/13/00
 TEST TYPE : Step Rate Injection
 PTS TECHNICIANS : J. Smith
 BHP GAUGE DEPTH:

STEP NO.	TIME	(1) SURFACE TUBING PRESS. (psig)	(2) CUMULATIVE VOL INJECTED (bbbls)	(3) INJECTION RATE (bbbls/day)	(4) FRICTION HEAD LOSS (psi)	(5) CORRECTED TUBING PRESS. (psi) (1) - (4)	(6) INJECTION RATE (gpm) (3)/34.2657	(7) MEASURED BHP (psi)
	11:10							
	11:15	1504.0	0.6	170.2	1.571	1502.4	4.96	
	11:20	1526.0	1.2	183.6	1.807	1524.2	5.36	
1	11:25	1537.0	1.9	181.4	1.768	1535.2	5.29	
	11:30	1590.0	2.6	221.9	2.566	1587.4	6.47	
	11:35	1523.0	3.4	219.5	2.515	1520.5	6.40	
2	11:40	1609.0	4.2	230.7	2.758	1606.2	6.73	
	11:45	1595.0	5.2	280.0	3.946	1591.1	8.17	
	11:50	1567.0	6.2	286.7	4.122	1562.9	8.36	
3	11:55	1613.0	7.1	282.2	4.003	1609.0	8.23	
	12:00	1641.0	8.5	387.5	7.198	1633.8	11.30	
	12:05	1643.0	9.8	383.4	7.057	1635.9	11.18	
4	12:10	1659.0	11.1	383.0	7.044	1652.0	11.17	
	12:15	1659.0	12.9	504.0	11.705	1647.3	14.70	
	12:20	1645.0	14.7	506.2	11.800	1633.2	14.76	
5	12:25	1689.0	16.4	508.4	11.895	1677.1	14.83	
	12:30	1699.0	18.8	694.4	21.177	1677.8	20.25	
	12:35	1714.0	21.2	669.7	19.805	1694.2	19.53	
6	12:40	1722.0	23.5	667.5	19.685	1702.3	19.47	
	12:45	1719.0	26.2	788.4	26.784	1692.2	23.00	
	12:50	1921.0	28.9	772.8	25.812	1895.2	22.54	
7	12:55	1729.0	31.6	788.4	26.784	1702.2	23.00	
	13:00	1744.0	35.0	978.8	39.965	1704.0	28.55	
	13:05	1712.0	38.5	985.6	40.480	1671.5	28.75	
8	13:10	1721.0	41.8	969.9	39.295	1681.7	28.29	
	13:15	1748.0	46.1	1229.7	60.957	1687.0	35.87	
	13:20	1732.0	50.4	1245.4	62.404	1669.6	36.32	
9	13:25	1750.0	55.0	1308.0	68.331	1681.7	38.15	
	13:26	7.8						
	13:27	0.0						

Production Testing Services

Step Rate Injection Test



Phone: (505) 391-8703
Fax: (505) 393-4753

1247 Broadway Pl.
P.O. Box 7125
Hobbs, NM 88240