

DATE IN <u>2-16-10</u>	SUSPENSE	ENGINEER <u>RE</u>	LOGGED IN <u>2-16</u>	TYPE <u>PC</u>	PTBW APP NO. <u>1004755834</u>
------------------------	----------	--------------------	-----------------------	----------------	-----------------------------------

ABOVE THIS LINE FOR DIVISION USE ONLY

NEW MEXICO OIL CONSERVATION DIVISION
- Engineering Bureau -
1220 South St. Francis Drive, Santa Fe, NM 87505



Apache

Lou Worthan

ADMINISTRATIVE APPLICATION CHECKLIST

#4,5,9-21

THIS CHECKLIST IS MANDATORY FOR ALL ADMINISTRATIVE APPLICATIONS FOR EXCEPTIONS TO DIVISION RULES AND REGULATIONS WHICH REQUIRE PROCESSING AT THE DIVISION LEVEL IN SANTA FE

Application Acronyms:

[NSL-Non-Standard Location] [NSP-Non-Standard Proration Unit] [SD-Simultaneous Dedication]
[DHC-Downhole Commingling] [CTB-Lease Commingling] [PLC-Pool/Lease Commingling]
[PC-Pool Commingling] [OLS - Off-Lease Storage] [OLM-Off-Lease Measurement]
[WFX-Waterflood Expansion] [PMX-Pressure Maintenance Expansion]
[SWD-Salt Water Disposal] [IPI-Injection Pressure Increase]
[EOR-Qualified Enhanced Oil Recovery Certification] [PPR-Positive Production Response]

15 Wells

[1] **TYPE OF APPLICATION** - Check Those Which Apply for [A]

[A] Location - Spacing Unit - Simultaneous Dedication
☐ NSL ☐ NSP ☐ SD

Check One Only for [B] or [C]

[B] Commingling - Storage - Measurement
☐ DHC ☐ CTB ☐ PLC ☒ PC ☐ OLS ☐ OLM

[C] Injection - Disposal - Pressure Increase - Enhanced Oil Recovery
☐ WFX ☐ PMX ☐ SWD ☐ IPI ☐ EOR ☐ PPR

[D] Other: Specify _____

[2] **NOTIFICATION REQUIRED TO:** - Check Those Which Apply, or Does Not Apply

[A] ☐ Working, Royalty or Overriding Royalty Interest Owners
[B] ☐ Offset Operators, Leaseholders or Surface Owner
[C] ☐ Application is One Which Requires Published Legal Notice
[D] ☐ Notification and/or Concurrent Approval by BLM or SLO
U.S. Bureau of Land Management - Commissioner of Public Lands, State Land Office
[E] ☐ For all of the above, Proof of Notification or Publication is Attached, and/or,
[F] ☐ Waivers are Attached

RECEIVED OGD
200 FEB 16 AM 11:36

[3] **SUBMIT ACCURATE AND COMPLETE INFORMATION REQUIRED TO PROCESS THE TYPE OF APPLICATION INDICATED ABOVE.**

[4] **CERTIFICATION:** I hereby certify that the information submitted with this application for administrative approval is **accurate** and **complete** to the best of my knowledge. I also understand that **no action** will be taken on this application until the required information and notifications are submitted to the Division.

Note: Statement must be completed by an individual with managerial and/or supervisory capacity.

Amber Cooke
Print or Type Name

Signature

Amber Cooke

Engineering Tech
Title

02/11/2010
Date

amber.cooke@apachecorp.com
e-mail Address



February 11, 2010

Richard Ezeanyim
New Mexico Oil Conservation Division
1220 South St. Francis Drive
Santa Fe, New Mexico 87505

Re: Administrative Approval to Surface Commingle
Lou Worthan #4, #5, #9, #10, #11, #12, #13, #14, #15, #16, #17, #18, #19, #20, #21 ✓
Sec 11, T22S, R37E
Lea County, New Mexico

Dear Mr. Ezeanyim,

Apache requests administrative approval to surface commingle the existing wells, Lou Worthan #4, #5, #9, #10, #11, #12, #13, #14, #15, #16, #17, #18, #19, #20, #21.

All the wells are located on the same Private Lease #306605. Since all working, revenue and royalty interest ownerships are common, interest owner notification was not required.

The following are enclosed for your review of the proposed surface commingling:

1. C-103.
2. Well information table and copies of C-102's for each well.
3. Proposed production facilities diagram.
4. Well location map.
5. Signed statement from Landman acknowledging identical interests for each zone. ✓

If you need additional information or have any questions, please give me a call at (918) 491-4968.

Sincerely,


Amber Cooke
Engineering Technician

Lou Worthan Lease
 Blinebry Oil & Gas (Oil) (06660)
 Blinebry Oil & Gas (Pro Gas) (72480)
 Tubb Oil & Gas (Oil) (60240)
 Tubb Oil & Gas (Pro Gas) (86440)
 Drinkard (19190)
 Wantz; Abo (62700)
 Wantz; Granite Wash (62730)

Well No.	API	Location	Pool	Status	API Gravity
Lou Worthan #4	30-025-10213	G -11-22S-37E	Blinebry Oil & Gas (Oil)	Active	36.5
Lou Worthan #5	30-025-10214	C -11-22S-37E	Blinebry Oil & Gas (Pro Gas)	Active	36.5
Lou Worthan #9	30-025-10218	E -11-22S-37E	Blinebry Oil & Gas (Oil) Tubb Oil & Gas (Pro Gas)	Active	36.7
Lou Worthan #10	30-025-10219	D -11-22S-37E	Tubb Oil & Gas (Pro Gas) Drinkard	Active	37.7
Lou Worthan #11	30-025-10220	F -11-22S-37E	Tubb Oil & Gas (Oil) Blinebry Oil & Gas (Pro Gas) Drinkard	Active	36.7
Lou Worthan #12	30-025-10221	H -11-22S-37E	Blinebry Oil & Gas (Pro Gas)	Active	
Lou Worthan #13	30-025-24943	C -11-22S-37E	Drinkard Wantz; Abo Wantz; Granite Wash	Active	37.3 36.5
Lou Worthan #14	30-025-25255	A -11-22S-37E	Drinkard Tubb Oil & Gas (Oil) Wantz; Abo	Active	
Lou Worthan #15	30-025-25304	G -11-22S-37E	Drinkard Tubb Oil & Gas (Pro Gas) Wantz; Abo	Active	
Lou Worthan #16	30-025-25383	B -11-22S-37E	Tubb Oil & Gas (Oil)	Active	
Lou Worthan #17	30-025-25405	E -11-22S-37E	Drinkard Wantz; Abo	Active	
Lou Worthan #18	30-025-25568	H -11-22S-37E	Tubb Oil & Gas (Oil) Wantz; Abo Wantz; Granite Wash	Active	
Lou Worthan #19	30-025-29469	D -11-22S-37E	Blinebry Oil & Gas (Oil)	Active	
Lou Worthan #20	30-025-30285	F -11-22S-37E	Wantz; Abo Wantz; Granite Wash	Active	
Lou Worthan #21	30-025-33426	B -11-22S-37E	Blinebry Oil & Gas (Pro Gas) Wantz; Abo	Active	

District I
PO Box 1980, Hobbs, NM 88241-1980
District II
811 South First, Artesia, NM 88210
District III
1889 Rio Brazos Rd., Aztec, NM 87410
District IV
2840 South Pacheco, Santa Fe, NM 87505

State of New Mexico
Energy, Minerals & Natural Resources Department

OIL CONSERVATION DIVISION
2040 South Pacheco
Santa Fe, NM 87505

Form C-102
Revised October 18, 1994
Instructions on back
Submit to Appropriate District Office
State Lease - 4 Copies
Fee Lease - 3 Copies

☐ AMENDED REPORT

WELL LOCATION AND ACREAGE DEDICATION PLAT

1 APT Number 30-025-10213		2 Pool Code 6660		3 Pool Name BLINERY OIL & GAS (OIL)	
4 Property Code 6488		5 Property Name LOW WORTHAN			6 Well Number 4
7 OGRID No. 014021		8 Operator Name MARATHON OIL Co.			9 Elevation GR: 3341 KR: 3354

10 Surface Location

UL or lot no.	Section	Township	Range	Lot Idn	Feet from the	North/South line	Feet from the	East/West line	County
G	11	22-5	37-E		1980	NORTH	1980	EAST	LEA

11 Bottom Hole Location If Different From Surface

UL or lot no.	Section	Township	Range	Lot Idn	Feet from the	North/South line	Feet from the	East/West line	County

12 Dedicated Acres 40	13 Joint or Infill	14 Consolidation Code	15 Order No. NSP-1795 (SO)
--------------------------	--------------------	-----------------------	-------------------------------

NO ALLOWABLE WILL BE ASSIGNED TO THIS COMPLETION UNTIL ALL INTERESTS HAVE BEEN CONSOLIDATED
OR A NON-STANDARD UNIT HAS BEEN APPROVED BY THE DIVISION

16				D				C				B				A			
												21				(11)			
E				F				G				H							
												12							
L				K				J				I							
M				N				O				P							

17 OPERATOR CERTIFICATION

I hereby certify that the information contained herein is true and complete to the best of my knowledge and belief

Signature: Scott Hodges

Printed Name: SCOTT HODGES

Title: ENGINEERING TECHNICIAN

Date: 10/28/98

18 SURVEYOR CERTIFICATION

I hereby certify that the well location shown on this plat was plotted from field notes of actual surveys made by me or under my supervision, and that the same is true and correct to the best of my belief.

Date of Survey: _____

Signature and Seal of Professional Surveyor: _____

Certificate Number: _____

District I
1625 N. French Dr., Hobbs, NM 88240
District II
1301 W. Grand Avenue, Artesia, NM 88210
District III
1000 Rio Brazos Rd., Aztec, NM 87410
District IV
1220 S. St. Francis Dr., Santa Fe, NM 87505

State of New Mexico
Energy, Minerals & Natural Resources Department
OIL CONSERVATION DIVISION
1220 South St. Francis Dr.
Santa Fe, NM 87505

Form C-102
Revised October 15, 2009
Submit one copy to appropriate
District Office

~~AMENDED REPORT~~

WELL LOCATION AND ACREAGE DEDICATION PLAT

¹ API Number 30-035-10214		² Pool Code 72480		³ Pool Name BLINEBRY OIL & GAS (PRO GAS)	
⁴ Property Code 306605		⁵ Property Name LOU WORTHAN			⁶ Well Number 5
⁷ OGRID No. 873		⁸ Operator Name APACHE CORPORATION			⁹ Elevation

¹⁰ Surface Location

UL or lot no.	Section	Township	Range	Lot Idn	Feet from the	North/South line	Feet from the	East/West line	County
C	11	22 S	37 E		660	N	1980	W	LEA

¹¹ Bottom Hole Location If Different From Surface

UL or lot no.	Section	Township	Range	Lot Idn	Feet from the	North/South line	Feet from the	East/West line	County
¹² Dedicated Acres 40	¹³ Joint or Infill	¹⁴ Consolidation Code		¹⁵ Order No. NSP-1937-A-npi					

No allowable will be assigned to this completion until all interests have been consolidated or a non-standard unit has been approved by the division.

¹⁶ 	¹⁷ OPERATOR CERTIFICATION			
	I hereby certify that the information contained herein is true and complete to the best of my knowledge and belief, and that this organization either owns a working interest or undivided mineral interest in the land including the proposed bottom hole location or has a right to drill this well at this location pursuant to a contract with an owner of such a mineral or working interest, or to a voluntary pooling agreement or a compulsory pooling order heretofore entered by the division.			
	Signature: <i>Michelle Hanson</i> Date: 1/14/2010			
	Michelle Hanson Printed Name			
	¹⁸ SURVEYOR CERTIFICATION			
	I hereby certify that the well location shown on this plat was plotted from field notes of actual surveys made by me or under my supervision, and that the same is true and correct to the best of my belief.			
	Date of Survey Signature and Seal of Professional Surveyor:			
	Certificate Number			

District I
1625 N. French Dr., Hobbs, NM 88240
District II
1301 W. Grand Avenue, Artesia, NM 88210
District III
1000 Rio Brazos Rd., Aztec, NM 87410
District IV
1220 S. St. Francis Dr., Santa Fe, NM 87505

State of New Mexico
Energy, Minerals & Natural Resources Department
OIL CONSERVATION DIVISION
1220 South St. Francis Dr.
Santa Fe, NM 87505

Form C-102
Revised October 15, 2009
Submit one copy to appropriate
District Office

☐ AMENDED REPORT

WELL LOCATION AND ACREAGE DEDICATION PLAT

¹ API Number 30-025-10218	² Pool Code 6660	³ Pool Name BLINEBRY OIL & GAS (OIL)
⁴ Property Code 306605	⁵ Property Name LOU WORTHAN	⁶ Well Number 9
⁷ GRID No. 873	⁸ Operator Name APACHE CORPORATION	⁹ Elevation

¹⁰ Surface Location

UL or lot no.	Section	Township	Range	Lot Ida	Feet from the	North/South line	Feet from the	East/West line	County
E	11	22 S	37 E		1905	N	440	W	LEA

¹¹ Bottom Hole Location If Different From Surface

UL or lot no.	Section	Township	Range	Lot Ida	Feet from the	North/South line	Feet from the	East/West line	County

¹² Dedicated Acres 40	¹³ Joint or Infill	¹⁴ Consolidation Code	¹⁵ Order No. NSP-1937-A-apt
--	-------------------------------	----------------------------------	--

No allowable will be assigned to this completion until all interests have been consolidated or a non-standard unit has been approved by the division.

¹⁶ 				¹⁷ OPERATOR CERTIFICATION I hereby certify that the information contained herein is true and complete to the best of my knowledge and belief, and that this organization either owns a working interest or unleased mineral interest in the land including the proposed bottom hole location or has a right to drill this well at this location pursuant to a contract with an owner of such a mineral or working interest, or to a voluntary pooling agreement or a compulsory pooling order heretofore entered by the division. Signature: <u>Michelle Hanson</u> Date: <u>1/14/2010</u> Printed Name: <u>Michelle Hanson</u>
				¹⁸ SURVEYOR CERTIFICATION I hereby certify that the well location shown on this plat was plotted from field notes of actual surveys made by me or under my supervision, and that the same is true and correct to the best of my belief. Date of Survey: Signature and Seal of Professional Surveyor:
				Certificate Number

District I
1625 N. French Dr., Hobbs, NM 88240
District II
1301 W. Grand Avenue, Artesia, NM 88210
District III
1000 Rio Brazos Rd., Aztec, NM 87410
District IV
1220 S. St. Francis Dr., Santa Fe, NM 87505

State of New Mexico
Energy, Minerals & Natural Resources Department
OIL CONSERVATION DIVISION
1220 South St. Francis Dr.
Santa Fe, NM 87505

Form C-102
Revised October 15, 2009
Submit one copy to appropriate
District Office

☒ AMENDED REPORT

WELL LOCATION AND ACREAGE DEDICATION PLAT

¹ API Number 30-025-10218	² Pool Code 86440	³ Pool Name TUBB OIL & GAS (PRO GAS)
⁴ Property Code 306605	⁵ Property Name LOU WORTHAN	
⁶ OGRID No. 873	⁷ Operator Name APACHE CORPORATION	⁸ Well Number 9
⁹ Elevation		

¹⁰ Surface Location

UL or lot no.	Section	Township	Range	Lot Idn	Feet from the	North/South line	Feet from the	East/West line	County
E	11	22 S	37 E		1905	N	440	W	LEA

¹¹ Bottom Hole Location If Different From Surface

UL or lot no.	Section	Township	Range	Lot Idn	Feet from the	North/South line	Feet from the	East/West line	County
¹² Dedicated Acres 40	¹³ Joint or Infill	¹⁴ Consolidation Code	¹⁵ Order No. NSP-1937-A-npt						

No allowable will be assigned to this completion until all interests have been consolidated or a non-standard unit has been approved by the division.

¹⁶ 					¹⁷ OPERATOR CERTIFICATION I hereby certify that the information contained herein is true and complete to the best of my knowledge and belief, and that this organization either owns a working interest or unleased mineral interest in the land including the proposed bottom hole location or has a right to drill this well at this location pursuant to a contract with an owner of such a mineral or working interest, or to a voluntary pooling agreement or a compulsory pooling order heretofore entered by the division. Signature: <u>Michelle Hanson</u> Date: <u>1/14/2010</u> Michelle Hanson Printed Name
					¹⁸ SURVEYOR CERTIFICATION I hereby certify that the well location shown on this plat was plotted from field notes of actual surveys made by me or under my supervision, and that the same is true and correct to the best of my belief. Date of Survey Signature and Seal of Professional Surveyor: Certificate Number

District I
PO Box 1980, Hobbs, NM 88241-1980

State of New Mexico
Energy, Minerals & Natural Resources Department

Form C-102
Revised February 10, 1994
Instructions on back

District II

PO Drawer DD, Artesia, NM 88211-0719

District III

1000 Rio Brazos Rd., Aztec, NM 87410

District IV

PO Box 2088, Santa Fe, NM 87504-2088

OIL CONSERVATION DIVISION
PO Box 2088
Santa Fe, NM 87504-2088

Submit to Appropriate District Office
State Lease - 4 Copies
Fee Lease - 3 Copies

☐ AMENDED REPORT

WELL LOCATION AND ACREAGE DEDICATION PLAT

API Number 30-025-10219		Pool Code 19190	Pool Name Drinkard
Property Code 006488	Property Name Lou Worthan		Well Number 10
OGRID No. 14021	Operator Name Marathon Oil Company		Elevation 3370' GL

¹⁰ Surface Location

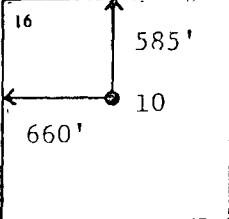
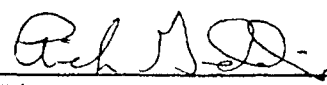
UL or lot no.	Section	Township	Range	Lot Idn	Feet from the	North/South line	Feet from the	East/West line	County
D	11	22S	37E	--	585	North	660	West	Lea

¹¹ Bottom Hole Location If Different From Surface

UL or lot no.	Section	Township	Range	Lot Idn	Feet from the	North/South line	Feet from the	East/West line	County

¹² Dedicated Acres 40	¹³ Joint or Infill N	¹⁴ Consolidation Code	¹⁵ Order No.
-------------------------------------	------------------------------------	----------------------------------	-------------------------

NO ALLOWABLE WILL BE ASSIGNED TO THIS COMPLETION UNTIL ALL INTERESTS HAVE BEEN CONSOLIDATED
OR A NON-STANDARD UNIT HAS BEEN APPROVED BY THE DIVISION

									
<p>¹⁷ OPERATOR CERTIFICATION</p> <p>I hereby certify that the information contained herein is true and complete to the best of my knowledge and belief</p> <p></p> <p>Signature Rick D. Gaddis</p> <p>Printed Name Petroleum Engineer</p> <p>Title May 19, 1994</p> <p>Date</p>									
<p>¹⁸ SURVEYOR CERTIFICATION</p> <p>I hereby certify that the well location shown on this plat was plotted from field notes of actual surveys made by me or under my supervision, and that the same is true and correct to the best of my belief.</p> <p>Date of Survey</p> <p>Signature and Seal of Professional Surveyor:</p> <p>Certificate Number</p>									

District I
1625 N. French Dr., Hobbs, NM 88240
District II
1301 W. Grand Avenue, Artesia, NM 88210
District III
1000 Rio Brazos Rd., Aztec, NM 87410
District IV
1220 S. St. Francis Dr., Santa Fe, NM 87505

State of New Mexico
Energy, Minerals & Natural Resources Department
OIL CONSERVATION DIVISION
1220 South St. Francis Dr.
Santa Fe, NM 87505

Form C-102
Revised October 15, 2009
Submit one copy to appropriate
District Office
☐ AMENDED REPORT

WELL LOCATION AND ACREAGE DEDICATION PLAT

¹ API Number 30-095-10219		² Pool Code 86440	³ Pool Name TUBB OIL & GAS (PRO GAS)
⁴ Property Code 306605	⁵ Property Name LOU WORTHAN		⁶ Well Number 10
⁷ OGRID No. 873	⁸ Operator Name APACHE CORPORATION		⁹ Elevation

¹⁰ Surface Location

UL or lot no.	Section	Township	Range	Lot Ida	Feet from the	North/South line	Feet from the	East/West line	County
D	11	21 S	37 E		585	N	660	W	LEA

¹¹ Bottom Hole Location If Different From Surface

UL or lot no.	Section	Township	Range	Lot Ida	Feet from the	North/South line	Feet from the	East/West line	County
¹² Dedicated Acres 40	¹³ Joint or Infill	¹⁴ Consolidation Code		¹⁵ Order No. NSP-1937-A-npt					

No allowable will be assigned to this completion until all interests have been consolidated or a non-standard unit has been approved by the division.

¹⁶ 				¹⁷ OPERATOR CERTIFICATION I hereby certify that the information contained herein is true and complete to the best of my knowledge and belief, and that this organization either owns a working interest or unleased mineral interest in the land including the proposed bottom hole location or has a right to drill this well at this location pursuant to a contract with an owner of such a mineral or working interest, or to a voluntary pooling agreement or a compulsory pooling order heretofore entered by the division. Signature: <u>Michelle Hanson</u> Date: <u>1/14/2010</u> Michelle Hanson Printed Name
				¹⁸ SURVEYOR CERTIFICATION I hereby certify that the well location shown on this plat was plotted from field notes of actual surveys made by me or under my supervision, and that the same is true and correct to the best of my belief. Date of Survey Signature and Seal of Professional Surveyor: Certificate Number

District I

1625 N. French Dr., Hobbs, NM 88240

District II

1301 W. Grand Avenue, Artesia, NM 88210

District III

1000 Rio Brazos Rd., Aztec, NM 87410

District IV

1220 S. St. Francis Dr., Santa Fe, NM 87505

State of New Mexico
Energy, Minerals & Natural Resources Department
OIL CONSERVATION DIVISION
1220 South St. Francis Dr.
Santa Fe, NM 87505

Form C-102

Revised October 15, 2009

Submit one copy to appropriate

District Office

☒ AMENDED REPORT

WELL LOCATION AND ACREAGE DEDICATION PLAT

1 API Number 30-025-10220		2 Pool Name Tubb Oil & Gas (OIL)	
3 Property Code 306605		4 Property Name LOU WORTHAN	
5 OGRID No. 873		6 Operator Name APACHE CORPORATION	
		7 Well Number 11	
		8 Elevation	

10 Surface Location

UL or lot no.	Section	Township	Range	Lot	Feet from the	North/South line	Feet from the	East/West line	County
F	11	22 S	37 E		1905	N	2055	W	LEA

11 Bottom Hole Location If Different From Surface

UL or lot no.	Section	Township	Range	Lot	Feet from the	North/South line	Feet from the	East/West line	County

12 Dedicated Acres 40	13 Joint or Infill	14 Consolidation Code	15 Order No. NSP-1937-A-npt
--------------------------	--------------------	-----------------------	--------------------------------

No allowable will be assigned to this completion until all interests have been consolidated or a non-standard unit has been approved by the division.

	17 OPERATOR CERTIFICATION I hereby certify that the information contained herein is true and complete to the best of my knowledge and belief, and that this organization either owns a working interest or leased mineral interest in the land and/or the proposed bottom hole location or has a right to drill this well at this location pursuant to a contract with an owner of such a mineral working interest or to a voluntary pooling agreement or a compulsory pooling order heretofore entered by the division.	
	Signature: <u>Michelle Hanson</u> Date: <u>1/14/2010</u>	
	Printed Name: <u>Michelle Hanson</u>	
	18 SURVEYOR CERTIFICATION I hereby certify that the well location shown on this plat was plotted from field notes of actual surveys made by me or under my supervision, and that the same is true and correct to the best of my belief.	
Date of Survey: _____ Signature and Seal of Professional Surveyor: _____		Certificate Number: _____

District I
1625 N. French Dr., Hobbs, NM 88240
District II
1301 W. Grand Avenue, Artesia, NM 88210
District III
1000 Rio Brazos Rd., Aztec, NM 87410
District IV
1220 S. St. Francis Dr., Santa Fe, NM 87505

State of New Mexico
Energy, Minerals & Natural Resources Department
OIL CONSERVATION DIVISION
1220 South St. Francis Dr.
Santa Fe, NM 87505

Form C-102
Revised October 15, 2009
Submit one copy to appropriate
District Office

☒ AMENDED REPORT

WELL LOCATION AND ACREAGE DEDICATION PLAT

¹ API Number 30-025-10220		² Pool Code 72480	³ Pool Name BLINEBRY OIL & GAS (PRO GAS)
⁴ Property Code 306605	⁵ Property Name LOU WORTHAN		⁶ Well Number 11
⁷ OGRID No. 878	⁸ Operator Name APACHE CORPORATION		⁹ Elevation

¹⁰ Surface Location

UL or lot no.	Section	Township	Range	Lot Idn	Feet from the	North/South line	Feet from the	East/West line	County
F	11	22 S	37 E		1905	N	2055	W	LEA

¹¹ Bottom Hole Location If Different From Surface

UL or lot no.	Section	Township	Range	Lot Idn	Feet from the	North/South line	Feet from the	East/West line	County

¹² Dedicated Acres 40	¹³ Joint or Infill	¹⁴ Consolidation Code	¹⁵ Order No. NSP-1937-A-npi
-------------------------------------	-------------------------------	----------------------------------	---

No allowable will be assigned to this completion until all interests have been consolidated or a non-standard unit has been approved by the division.

¹⁶ 	¹⁷ OPERATOR CERTIFICATION I hereby certify that the information contained herein is true and complete to the best of my knowledge and belief, and that this organization either owns a working interest or released mineral interest in the land including the proposed bottom hole location or has a right to drill this well at this location pursuant to a contract with an owner of such a mineral or working interest, or to a voluntary pooling agreement or a compulsory pooling order heretofore covered by the division. Signature: <u>Michelle Hanson</u> Date: <u>1/14/2010</u> Printed Name: <u>Michelle Hanson</u>	
	¹⁸ SURVEYOR CERTIFICATION I hereby certify that the well location shown on this plat was plotted from field notes of actual surveys made by me or under my supervision, and that the same is true and correct to the best of my belief. Date of Survey: Signature and Seal of Professional Surveyor:	
	Certificate Number	

District I
1625 N. French Dr., Hobbs, NM 88240
District II
1301 W. Grand Avenue, Artesia, NM 88210
District III
1000 Rio Brazos Rd., Aztec, NM 87410
District IV
1220 S. St. Francis Dr., Santa Fe, NM 87505

State of New Mexico
Energy, Minerals & Natural Resources Department
OIL CONSERVATION DIVISION
1220 South St. Francis Dr.
Santa Fe, NM 87505

Form C-102
Revised October 12, 2005
Submit to Appropriate District Office
State Lease - 4 Copies
Fee Lease - 3 Copies

☐ AMENDED REPORT

WELL LOCATION AND ACREAGE DEDICATION PLAT

¹ API Number 30-025-10220	² Pool Code 19190	³ Pool Name Drinkard
⁴ Property Code 306605	⁵ Property Name Lou Worthan	⁶ Well Number 11
⁷ OGRID No. 873	⁸ Operator Name Apache Corporation	⁹ Elevation 3359'

¹⁰ Surface Location

UL or lot no. F	Section 11	Township 22S	Range 37E	Lot Idn	Feet from the 1905	North/South line North	Feet from the 2055	East/West line West	County Lea
--------------------	---------------	-----------------	--------------	---------	-----------------------	---------------------------	-----------------------	------------------------	---------------

¹¹ Bottom Hole Location If Different From Surface

UL or lot no.	Section	Township	Range	Lot Idn	Feet from the	North/South line	Feet from the	East/West line	County
---------------	---------	----------	-------	---------	---------------	------------------	---------------	----------------	--------

¹² Dedicated Acres 40	¹³ Joint or Infill	¹⁴ Consolidation Code	¹⁵ Order No.
-------------------------------------	-------------------------------	----------------------------------	-------------------------

No allowable will be assigned to this completion until all interests have been consolidated or a non-standard unit has been approved by the division.

<div data-bbox="97 982 1036 1906"> <p>16</p> </div>	<p>¹⁷ OPERATOR CERTIFICATION</p> <p><i>I hereby certify that the information contained herein is true and complete to the best of my knowledge and belief, and that this organization either owns a working interest or unleased mineral interest in the land including the proposed bottom hole location or has a right to drill this well at this location pursuant to a contract with an owner of such a mineral or working interest, or to a voluntary pooling agreement or a compulsory pooling order hereafter entered by the division.</i></p> <p><i>Amber Cooke</i> 01/15/2010 Signature Date</p> <p>Amber Cooke Printed Name</p>
	<p>¹⁸ SURVEYOR CERTIFICATION</p> <p><i>I hereby certify that the well location shown on this plat was plotted from field notes of actual surveys made by me or under my supervision, and that the same is true and correct to the best of my belief.</i></p>
	<p>Date of Survey</p> <p>Signature and Seal of Professional Surveyor:</p>
	<p>Certificate Number</p>

16				<p>17 OPERATOR CERTIFICATION</p> <p><i>I hereby certify that the information contained herein is true and complete to the best of my knowledge and belief, and that this organization either owns a working interest or unleased mineral interest in the land including the proposed bottom hole location or has a right to drill this well at this location pursuant to a contract with an owner of such a mineral or working interest, or to a voluntary pooling agreement or a compulsory pooling order heretofore entered by the Division.</i></p> <div style="display: flex; justify-content: space-between;"> <div style="width: 60%;"> <p><i>Michelle Hanson</i></p> <p>Signature</p> </div> <div style="width: 35%;"> <p>1/14/2010</p> <p>Date</p> </div> </div> <p>Michelle Hanson</p> <p>Printed Name</p>
				<p>18 SURVEYOR CERTIFICATION</p> <p><i>I hereby certify that the well location shown on this plat was plotted from field notes of actual surveys made by me or under my supervision, and that the same is true and correct to the best of my belief.</i></p> <p>Date of Survey</p> <p>Signature and Seal of Professional Surveyor</p> <p>Certificate Number</p>

District I
1625 N. French Dr., Hobbs, NM 88240
District II
1301 W. Grand Avenue, Artesia, NM 88210
District III
1000 Rio Brazos Rd., Aztec, NM 87410
District IV
1220 S. St. Francis Dr., Santa Fe, NM 87505

State of New Mexico
Energy, Minerals & Natural Resources

OIL CONSERVATION DIVISION
1220 South St. Francis Dr.
Santa Fe, NM 87505

Form C-102
Revised June 10, 2003

Submit to Appropriate District Office
State Lease - 4 Copies
Fee Lease - 3 Copies

☐ AMENDED REPORT

WELL LOCATION AND ACREAGE DEDICATION PLAT

¹ API Number 30-025-24943		² Pool Code 19190		³ Pool Name Drinkard	
⁴ Property Code 006488		⁵ Property Name Lou Worthan			⁶ Well Number 13
⁷ OGRID No. 01363		⁸ Operator Name Marathon Oil Company			⁹ Elevation 3362'

¹⁰ Surface Location

UL or lot no. C	Section 11	Township 22-S	Range 37-E	Lot. Idn	Feet from the 330'	North/South line North	Feet from the 2080	East/West line West	County Lea
---------------------------	----------------------	-------------------------	----------------------	----------	------------------------------	----------------------------------	------------------------------	-------------------------------	----------------------

¹¹ Bottom Hole Location If Different From Surface

UL or lot no.	Section	Township	Range	Lot. Idn	Feet from the	North/South line	Feet from the	East/West line	County
¹² Dedicated Acres 40 ¹³ Joint or Infill ¹⁴ Consolidation Code ¹⁵ Order No.									

NO ALLOWABLE WILL BE ASSIGNED TO THIS COMPLETION UNTIL ALL INTERESTS HAVE BEEN CONSOLIDATED OR A NON-STANDARD UNIT HAS BEEN APPROVED BY THE DIVISION

¹⁶ 	¹⁷ OPERATOR CERTIFICATION I hereby certify that the information contained herein is true and complete to the best of my knowledge and belief. Signature Charles E. Kendrick Printed Name Engineering Technician cekendrix@marathonoil.com Title and E-mail Address 04/01/2005 Date			
	¹⁸ SURVEYOR CERTIFICATION I hereby certify that the well location shown on this plat was plotted from field notes of actual surveys made by me or under my supervision, and that the same is true and correct to the best of my belief.			
	Date of Survey Signature and Seal of Professional Surveyer:			
	Certificate Number			

District I
1625 N. French Dr., Hobbs, NM 88240
District II
1301 W. Grand Avenue, Artesia, NM 88210
District III
1000 Rio Brazos Rd., Aztec, NM 87410
District IV
1220 S. St. Francis Dr., Santa Fe, NM 87505

State of New Mexico
Energy, Minerals & Natural Resources

OIL CONSERVATION DIVISION
1220 South St. Francis Dr.
Santa Fe, NM 87505

Form C-102
Revised June 10, 2003

Submit to Appropriate District Office
State Lease - 4 Copies
Fee Lease - 3 Copies

☐ AMENDED REPORT

WELL LOCATION AND ACREAGE DEDICATION PLAT

¹ API Number 30-025-24943		² Pool Code 62700		³ Pool Name Wantz Abo	
⁴ Property Code 006488		⁵ Property Name Lou Worthan			⁶ Well Number 13
⁷ OGRID No. 01363		⁸ Operator Name Marathon Oil Company			⁹ Elevation 3362'

¹⁰ Surface Location

UL or lot no.	Section	Township	Range	Lot. Idn	Feet from the	North/South line	Feet from the	East/West line	County
C	11	22-S	37-E		330'	North	2080	West	Lea

¹¹ Bottom Hole Location If Different From Surface

UL or lot no.	Section	Township	Range	Lot. Idn	Feet from the	North/South line	Feet from the	East/West line	County

¹² Dedicated Acres 40	¹³ Joint or Infill	¹⁴ Consolidation Code	¹⁵ Order No.
--	-------------------------------	----------------------------------	-------------------------

NO ALLOWABLE WILL BE ASSIGNED TO THIS COMPLETION UNTIL ALL INTERESTS HAVE BEEN CONSOLIDATED OR A NON-STANDARD UNIT HAS BEEN APPROVED BY THE DIVISION

¹⁶ 	¹⁷ OPERATOR CERTIFICATION I hereby certify that the information contained herein is true and complete to the best of my knowledge and belief. Signature Charles E. Kendrick Printed Name Engineering Technician cekendrix@marathonoil.com Title and E-mail Address 04/01/2005 Date		
	¹⁸ SURVEYOR CERTIFICATION I hereby certify that the well location shown on this plat was plotted from field notes of actual surveys made by me or under my supervision, and that the same is true and correct to the best of my belief. Date of Survey Signature and Seal of Professional Surveyer: Certificate Number		

NEW MEXICO OIL CONSERVATION COMMISSION
WELL LOCATION AND ACREAGE DEDICATION PLAT

Form C-102
Supersedes C-128
Effective 1-1-65

All distances must be from the outer boundaries of the Section

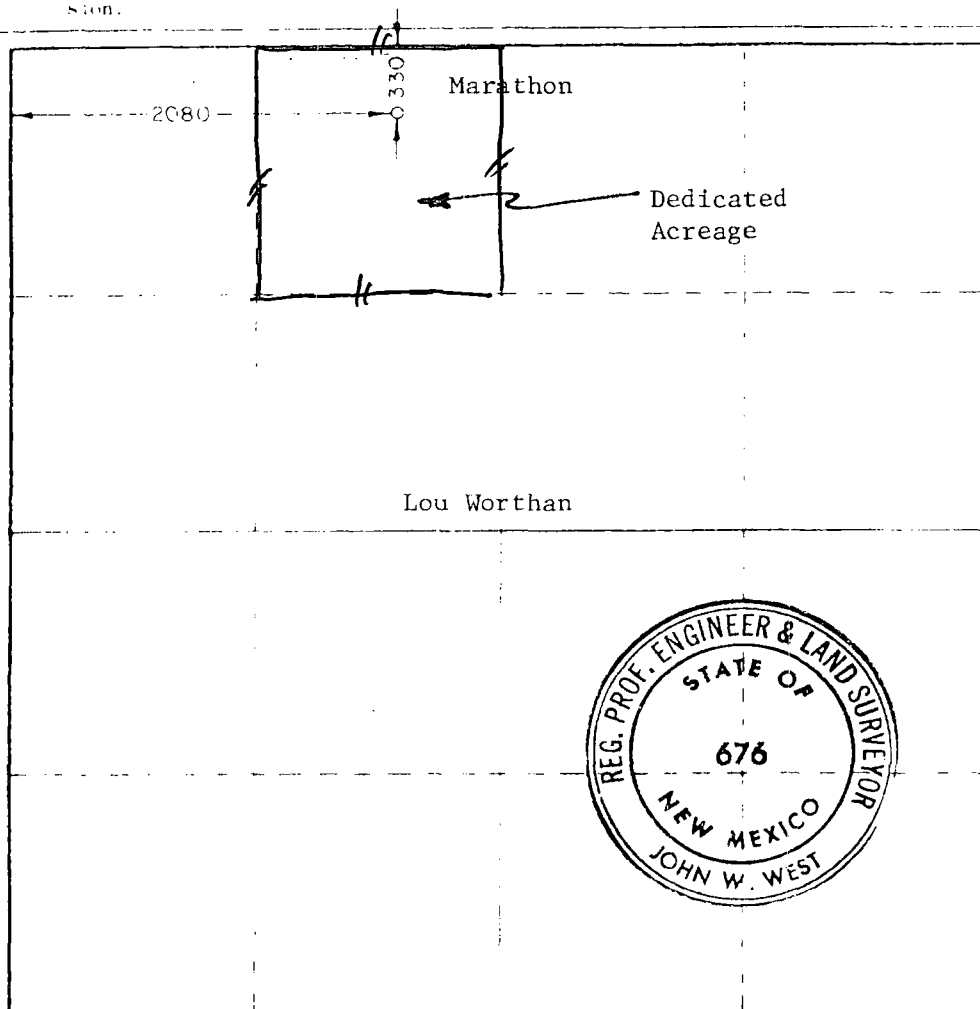
Marathon Oil Company			Lou Wortham			Section 13		
C	11	22 South	37 East	Lea				
2080	West		330	North				
3362.2	Granite Wash		Wantz Granite Wash		40			

- Outline the acreage dedicated to the subject well by colored pencil or hatchure marks on the plat below.
- If more than one lease is dedicated to the well, outline each and identify the ownership thereof (both as to working interest and royalty).
- If more than one lease of different ownership is dedicated to the well, have the interests of all owners been consolidated by communitization, unitization, force-pooling, etc?

Yes ☐ No ☐ If answer is "yes," type of consolidation _____

If answer is "no," list the owners and tract descriptions which have actually been consolidated. (Use reverse side of this form if necessary.) _____

No allowable will be assigned to the well until all interests have been consolidated (by communitization, unitization, forced-pooling, or otherwise) or until a non-standard unit, eliminating such interests, has been approved by the Commission.



CERTIFICATION

I hereby certify that the information contained herein is true and complete to the best of my knowledge and belief.

M. L. Johnston

M. L. Johnston

Petroleum Engineer

Marathon Oil Company

January 1, 1975

I hereby certify that the well location shown on this plat was plotted from field notes of actual surveys made by me or under my supervision, and that the same is true and correct to the best of my knowledge and belief.

Date Surveyed

December 19, 1974

Registered Professional Engineer
and Land Surveyor

John W. West

676

110 660 90 1320 630 980 231 2640 2000 1500 1000 500

District I
PO Box 1989, Hobbs, NM 88241-1989
District II
811 S. 1st Street, Artesia, NM 88210-2834
District III
1000 Rio Brava Rd., Aztec, NM 87410
District IV
2040 South Pacheco, Santa Fe, NM 87505

State of New Mexico
Energy, Minerals & Natural Resources Department

OIL CONSERVATION DIVISION
2040 South Pacheco
Santa Fe, NM 87505

Form C-102
Revised October 18, 1994
Instructions on back
Submit to Appropriate District Office
State Lease - 4 Copies
Fee Lease - 3 Copies

☐ AMENDED REPORT

WELL LOCATION AND ACREAGE DEDICATION PLAT

¹ API Number 30-025-25255		² Pool Code 19190		³ Pool Name Drinkard	
⁴ Property Code 006488		⁵ Property Name Lou Worthan			⁶ Well Number 14
⁷ OGRID No. 14021		⁸ Operator Name Marathon Oil Company			⁹ Elevation 3350' GL

¹⁰ Surface Location									
UL or lot no.	Section	Township	Range	Lot. Ida	Feet from the	North/South Line	Feet from the	East/West line	County
A	11	22-S	37-E		520	North	330	East	Lea

¹¹ Bottom Hole Location If Different From Surface

UL or lot no.	Section	Township	Range	Lot. Ida	Feet from the	North/South Line	Feet from the	East/West line	County
¹² Dedicated Acres 40		¹³ Joint or Infill		¹⁴ Consolidation Code		¹⁵ Order No. DHC-1019			

NO ALLOWABLE WILL BE ASSIGNED TO THIS COMPLETION UNTIL ALL INTERESTS HAVE BEEN CONSOLIDATED
OR A NON-STANDARD UNIT HAS BEEN APPROVED BY THE DIVISION

	¹⁷ OPERATOR CERTIFICATION I hereby certify that the information contained herein is true and complete to the best of my knowledge and belief. Signature: <u>Thomas P. Kacir</u> Printed Name: <u>Thomas P. Kacir</u> Title: <u>Production Engineer</u> Date: <u>4-12-99</u>	
	¹⁸ SURVEYOR CERTIFICATION I hereby certify that the well location shown on this plat was plotted from field notes of actual surveys made by me or under my supervision, and that the same is true and correct to the best of my belief. Date of Survey: _____ Signature and Seal of Professional Surveyor: _____ Certificate Number: _____	

District I
1625 N. French Dr., Hobbs, NM 88243
District II
1301 W. Grand Avenue, Artesia, NM 88210
District III
1000 Rio Brazos Rd., Aztec, NM 87410
District IV
1220 S. St. Francis Dr., Santa Fe, NM 87505

State of New Mexico
Energy, Minerals & Natural Resources Department
OIL CONSERVATION DIVISION
1220 South St. Francis Dr.
Santa Fe, NM 87505

Form C-102
Revised October 15, 2009
Submit one copy to appropriate
District Office

☐ AMENDED REPORT

WELL LOCATION AND ACREAGE DEDICATION PLAT

¹ API Number 30-025-25255	² Pool Code 60240	³ Pool Name TUBB OIL & GAS (OIL)
⁴ Property Code 306605	⁵ Property Name LOU WORTHAN	⁶ Well Number 14
⁷ OGRID No. 873	⁸ Operator Name APACHE CORPORATION	⁹ Elevation

¹⁰ Surface Location

UL or lot no. A	Section 11	Township 22 S	Range 37 E	Lot Idn	Feet from the 520	North/South line N	Feet from the 330	East/West line E	County LEA
--------------------	---------------	------------------	---------------	---------	----------------------	-----------------------	----------------------	---------------------	---------------

¹¹ Bottom Hole Location If Different From Surface

UL or lot no.	Section	Township	Range	Lot Idn	Feet from the	North/South line	Feet from the	East/West line	County
---------------	---------	----------	-------	---------	---------------	------------------	---------------	----------------	--------

¹² Dedicated Acres 40	¹³ Joint or Infill	¹⁴ Consolidation Code	¹⁵ Order No. NSP-1937-A-npi
-------------------------------------	-------------------------------	----------------------------------	---

No allowable will be assigned to this completion until all interests have been consolidated or a non-standard unit has been approved by the division.

16					<p>¹⁷ OPERATOR CERTIFICATION</p> <p>I hereby certify that the information contained herein is true and complete to the best of my knowledge and belief, and that this organization either owns a working interest or released mineral interest in the land including the proposed bottom hole location or has a right to drill this well at this location pursuant to a contract with an owner of such a mineral or working interest, or to a voluntary pooling agreement or a compulsory pooling order heretofore entered by the division.</p> <p>Signature: <i>Michelle Hansen</i> Date: 1/14/2010</p> <p>Michelle Hansen Printed Name</p>
					<p>¹⁸ SURVEYOR CERTIFICATION</p> <p>I hereby certify that the well location shown on this plat was plotted from field notes of actual surveys made by me or under my supervision, and that the same is true and correct to the best of my belief.</p> <p>Date of Survey</p> <p>Signature and Seal of Professional Surveyor</p>
					<p>Certificate Number</p>

District I
PO Box 1980, Hobbs, NM 88241-1980
District II
811 S. 1st Street, Artesia, NM 88210-2834
District III
1000 Rio Brazos Rd., Aztec, NM 87410
District IV
2040 South Pacheco, Santa Fe, NM 87505

State of New Mexico
Energy Minerals & Natural Resources Department

OIL CONSERVATION DIVISION
2040 South Pacheco
Santa Fe, NM 87505

Form C-102
Revised October 18, 1994
Instructions on back
Submit to Appropriate District Office
State Lease - 4 Copies
Fee Lease - 3 Copies

☐ AMENDED REPORT

WELL LOCATION AND ACREAGE DEDICATION PLAT

¹ API Number 30-025-25255	² Pool Code	³ Pool Name WANTZ-ABO
⁴ Property Code 006488	⁵ Property Name LOU WORTHAN	⁶ Well Number 14
⁷ OGRID No. 14021	⁸ Operator Name Marathon Oil Company	⁹ Elevation 3350

¹⁰ Surface Location

UL or lot no. A	Section 11	Township 22-S	Range 37-E	Lot. Idn	Feet from the 520'	North/South Line NORTH	Feet from the 330	East/West line EAST	County LEA
--------------------	---------------	------------------	---------------	----------	-----------------------	---------------------------	----------------------	------------------------	---------------

¹¹ Bottom Hole Location If Different From Surface

UL or lot no.	Section	Township	Range	Lot. Idn	Feet from the	North/South Line	Feet from the	East/West line	County
---------------	---------	----------	-------	----------	---------------	------------------	---------------	----------------	--------

¹² Dedicated Acres 40-NE/4	¹³ Joint or Infill N	¹⁴ Consolidation Code	¹⁵ Order No.
--	------------------------------------	----------------------------------	-------------------------

NO ALLOWABLE WILL BE ASSIGNED TO THIS COMPLETION UNTIL ALL INTERESTS HAVE BEEN CONSOLIDATED
OR A NON-STANDARD UNIT HAS BEEN APPROVED BY THE DIVISION

	¹⁷ OPERATOR CERTIFICATION <i>I hereby certify that the information contained herein is true and complete to the best of my knowledge and belief.</i> Signature <u>R. J. Longmire</u> Printed Name <u>DRILLING SUPERINTENDENT</u> Title <u>3/31/99</u> Date	
	¹⁸ SURVEYOR CERTIFICATION <i>I hereby certify that the well location shown on this plat was plotted from field notes of actual surveys made by me or under my supervision, and that the same is true and correct to the best of my belief.</i> Date of Survey Signature and Seal of Professional Surveyer: Certificate Number	

District I
PO Box 1908, Hobbs, NM 88241-1908
District II
PO Drawer DD, Artesia, NM 88211-4719
District III
1009 Rio Bravo Rd., Aztec, NM 87419
District IV
PO Box 2088, Santa Fe, NM 87504-2088

State of New Mexico
Energy, Minerals & Natural Resources Department

OIL CONSERVATION DIVISION
PO Box 2088
Santa Fe, NM 87504-2088

Form C-102
Revised February 10, 1994
Instructions on back
Submit to Appropriate District Office
State Lease - 4 Copies
Fee Lease - 3 Copies

☐ AMENDED REPORT

WELL LOCATION AND ACREAGE DEDICATION PLAT

API Number 30-025-25304	Pool Code 19190	Pool Name Drinkard
Property Code 006488	Property Name Lou Worthan	Well Number 15
OGRID No. 014021	Operator Name Marathon Oil Company	Elevation 3345 GL

10 Surface Location

UL or lot no.	Section	Township	Range	Lot Ida	Feet from the	North/South line	Feet from the	East/West line	County
G	11	22S	37E	-	1980	North	1860	East	Lea

11 Bottom Hole Location If Different From Surface

UL or lot no.	Section	Township	Range	Lot Ida	Feet from the	North/South line	Feet from the	East/West line	County
G	11	22S	37E	-	1980	North	1860	East	Lea

Dedicated Acres 40	Joint or Infill N	Consolidation Code	Order No.
-----------------------	----------------------	--------------------	-----------

NO ALLOWABLE WILL BE ASSIGNED TO THIS COMPLETION UNTIL ALL INTERESTS HAVE BEEN CONSOLIDATED
OR A NON-STANDARD UNIT HAS BEEN APPROVED BY THE DIVISION

16		1980'	
		#15	1860'
	SECTION 11		

17 OPERATOR CERTIFICATION

I hereby certify that the information contained herein is true and complete to the best of my knowledge and belief.

Thomas M. Price
Signature

Printed Name
Thomas M. Price

Title
Adv. Engineering Tech.

Date
4-20-94

18 SURVEYOR CERTIFICATION

I hereby certify that the well location shown on this plat was plotted from field notes of actual surveys made by me or under my supervision, and that the same is true and correct to the best of my belief.

Date of Survey

Signature and Seal of Professional Surveyor

Certificate Number

District I
1625 N. French Dr., Hobbs, NM 88240
District II
1301 W. Grand Avenue, Artesia, NM 88210
District III
1000 Rio Brazos Rd., Aztec, NM 87410
District IV
1220 S. St. Francis Dr., Santa Fe, NM 87505

State of New Mexico
Energy, Minerals & Natural Resources Department
OIL CONSERVATION DIVISION
1220 South St. Francis Dr.
Santa Fe, NM 87505

Form C-102
Revised October 15, 2009
Submit one copy to appropriate
District Office
☒ AMENDED REPORT

WELL LOCATION AND ACREAGE DEDICATION PLAT

¹ API Number 30-025-25304	² Pool Code 86440	³ Pool Name TUBB OIL & GAS (PRO GAS)
⁴ Property Code 306605	⁵ Property Name LOU WORTHAN	⁶ Well Number 15
⁷ OGRID No. 873	⁸ Operator Name APACHE CORPORATION	⁹ Elevation

¹⁰ Surface Location

UL or lot no. G	Section 11	Township 22 S	Range 37 E	Lot Idn	Feet from the 1980	North/South line N	Feet from the 1860	East/West line E	County LEA
---------------------------	----------------------	-------------------------	----------------------	---------	------------------------------	------------------------------	------------------------------	----------------------------	----------------------

¹¹ Bottom Hole Location If Different From Surface

UL or lot no.	Section	Township	Range	Lot Idn	Feet from the	North/South line	Feet from the	East/West line	County
¹² Dedicated Acres 40	¹³ Joint or Infill	¹⁴ Consolidation Code	¹⁵ Order No. NSP-1937-A-npi						

No allowable will be assigned to this completion until all interests have been consolidated or a non-standard unit has been approved by the division.

¹⁶						¹⁷ OPERATOR CERTIFICATION I hereby certify that the information contained herein is true and complete in the best of my knowledge and belief, and that this organization either owns a working interest or released mineral interest in the land including the proposed bottom hole location or has a right to drill this well at this location pursuant to a contract with an owner of such a mineral or working interest, or to a voluntary pooling agreement or a compulsory pooling order heretofore entered by the division. Michelle Hanson 1/14/2010 Signature Date Michelle Hanson Printed Name
						¹⁸ SURVEYOR CERTIFICATION I hereby certify that the well location shown on this plat was plotted from field notes of actual surveys made by me or under my supervision, and that the same is true and correct to the best of my belief. Date of Survey Signature and Seal of Professional Surveyor Certificate Number

District I
PO Box 1900, Hobbs, NM 88241-1900
District II
PO Drawer DD, Artesia, NM 88211-0719
District III
1000 Rio Grande Rd., Aztec, NM 87410
District IV
PO Box 2088, Santa Fe, NM 87504-2088

State of New Mexico
Energy, Minerals & Natural Resources Department

OIL CONSERVATION DIVISION
PO Box 2088
Santa Fe, NM 87504-2088

Form C-102
Revised February 10, 1994
Instructions on back
Submit to Appropriate District Office
State Lease - 4 Copies
Fee Lease - 3 Copies

☐ AMENDED REPORT

WELL LOCATION AND ACREAGE DEDICATION PLAT

API Number 30-025-25304	Pool Code 62700	Pool Name Wantz Abo
Property Code 006488	Property Name Wantz Abo	Well Number 15
OGRID No. 014021	Operator Name Marathon Oil Company	Elevation 3345 GL

10 Surface Location

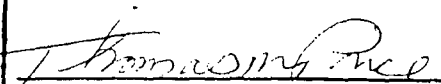
UL or lot no.	Section	Township	Range	Lot Ida	Feet from the	North/South line	Feet from the	East/West line	County
G	11	22S	37E	-	1980	North	1860	East	Lea

11 Bottom Hole Location If Different From Surface

UL or lot no.	Section	Township	Range	Lot Ida	Feet from the	North/South line	Feet from the	East/West line	County
G	11	22S	37E	-	1980	North	1860	East	Lea

Dedication Acres 40	Joint or Infill N	Consolidation Code	Order No.
------------------------	----------------------	--------------------	-----------

NO ALLOWABLE WILL BE ASSIGNED TO THIS COMPLETION UNTIL ALL INTERESTS HAVE BEEN CONSOLIDATED
OR A NON-STANDARD UNIT HAS BEEN APPROVED BY THE DIVISION

16				1980'	17 OPERATOR CERTIFICATION I hereby certify that the information contained herein is true and complete to the best of my knowledge and belief.  Signature Printed Name Thomas M. Price Title Adv. Engineering Tech. Date 4-20-94
			# 15	1860'	
	SECTION 11				18 SURVEYOR CERTIFICATION I hereby certify that the well location shown on this plat was plotted from field notes of actual surveys made by me or under my supervision, and that the same is true and correct to the best of my belief. Date of Survey Signature and Seal of Professional Surveyor: Certificate Number

All distances must be from the outer boundaries of the Section.

Operator Marathon Oil Company			Lease Lou Worthan			Well No. 16
Unit Letter B	Section 11	Township 22-S	Range 37-E	County Lea		

Actual Footage Location of Well:

330 feet from the North line and 1980 feet from the East line

Ground Level Elev. 3343'	Producing Formation Tubb Oil Zone	Pool Tubb Oil and Gas (oil)	Dedicated Acreage: 40
-----------------------------	--------------------------------------	--------------------------------	--------------------------

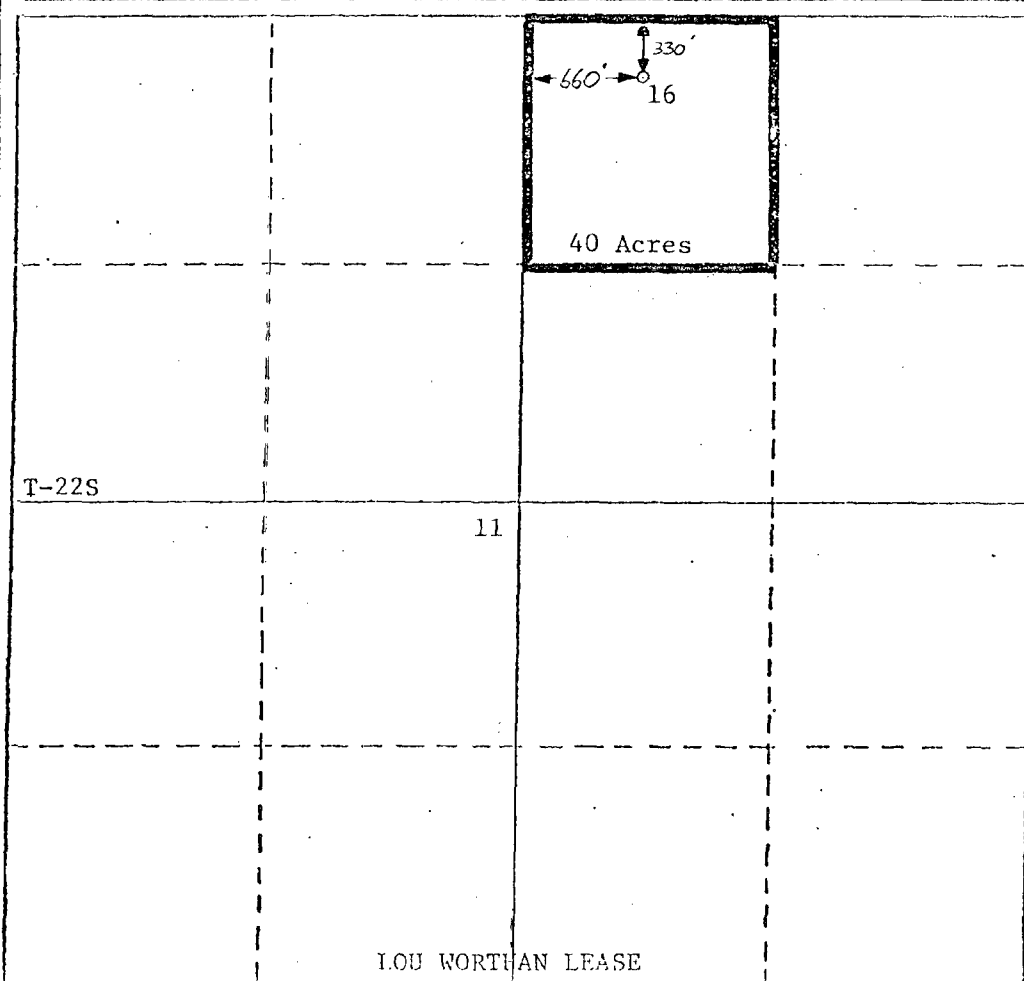
1. Outline the acreage dedicated to the subject well by colored pencil or hatchure marks on the plat below.
2. If more than one lease is dedicated to the well, outline each and identify the ownership thereof (both as to working interest and royalty).
3. If more than one lease of different ownership is dedicated to the well, have the interests of all owners been consolidated by communitization, unitization, force-pooling, etc?

☐ Yes ☐ No If answer is "yes," type of consolidation _____

If answer is "no," list the owners and tract descriptions which have actually been consolidated. (Use reverse side of this form if necessary.) _____

No allowable will be assigned to the well until all interests have been consolidated (by communitization, unitization, forced-pooling, or otherwise) or until a non-standard unit, eliminating such interests, has been approved by the Division.

R-37E



CERTIFICATION

I hereby certify that the information contained herein is true and complete to the best of my knowledge and belief.

Calvin C. Saathoff

Name

Calvin C. Saathoff

Position

Operations Superintendent

Company

Marathon Oil Company

Date

December 31, 1980

I hereby certify that the well location shown on this plat was plotted from field notes of actual surveys made by me or under my supervision, and that the same is true and correct to the best of my knowledge and belief.

Date Surveyed

Registered Professional Engineer and/or Land Surveyor

Certificate No.

0 330 660 990 1320 1650 1980 2310 2640 2970 3300 3630 3960 4290 4620 4950 5280 5610 5940 6270 6600

Submit to Appropriate
District Office
State Lease - 4 copies
Fee Lease - 3 copies

State of New Mexico
Energy, Minerals and Natural Resources Department

Form C-102
Revised 1-1-89

OIL CONSERVATION DIVISION

DISTRICT I
P.O. Box 1980, Hobbs, NM 88240

P.O. Box 2088
Santa Fe, New Mexico 87504-2088

DISTRICT II
P.O. Drawer DD, Artesia, NM 88210

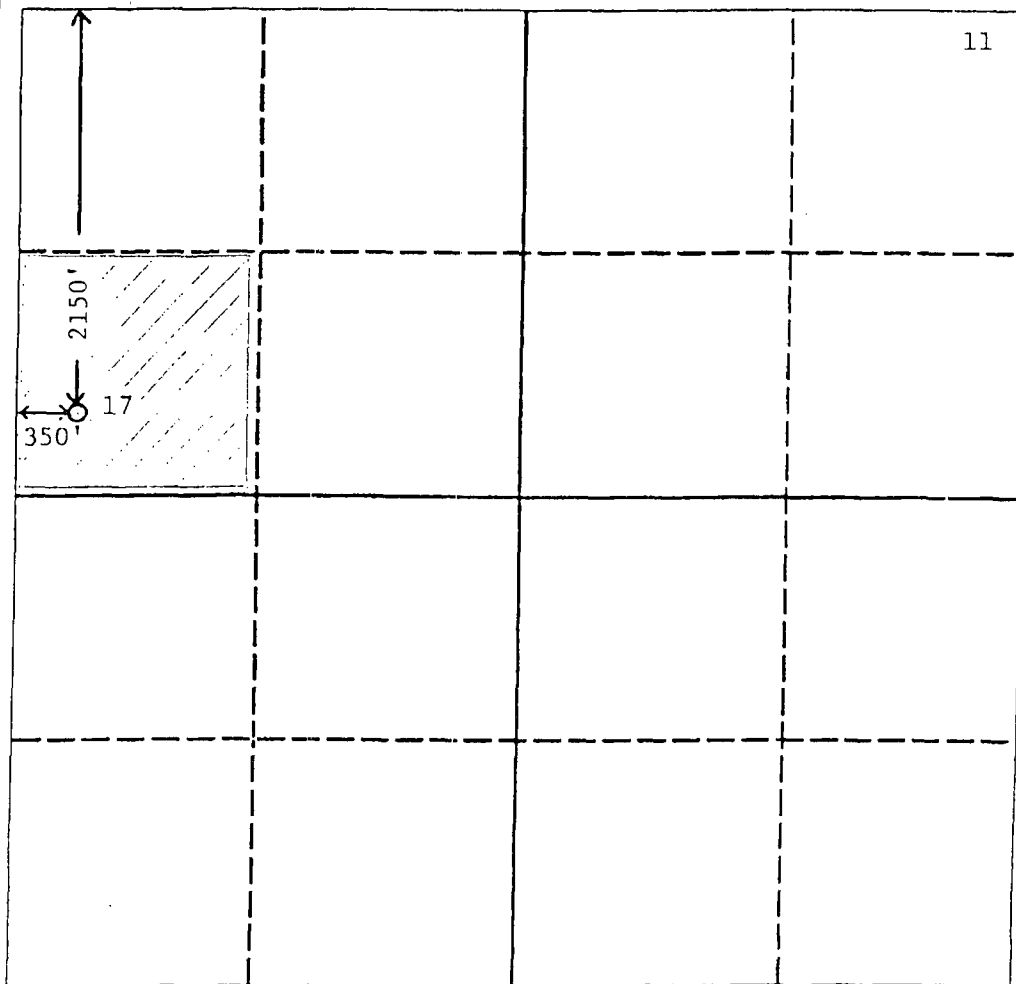
DISTRICT III
1000 Rio Brazos Rd., Aztec, NM 87410

WELL LOCATION AND ACREAGE DEDICATION PLAT

All Distances must be from the outer boundaries of the section

Operator Marathon Oil Company			Lease Lou Worthan		Well No. 17
Unit Letter E	Section 11	Township 22-S	Range 37-E	County Lea	
Actual Footage Location of Well: 2150 feet from the North line and 350 feet from the West line					
Ground level Elev. 3368'	Producing Formation Drinkard		Pool Drinkard	Dedicated Acreage: 40 Acres	

- Outline the acreage dedicated to the subject well by colored pencil or hatchure marks on the plat below.
- If more than one lease is dedicated to the well, outline each and identify the ownership thereof (both as to working interest and royalty).
- If more than one lease of different ownership is dedicated to the well, have the interest of all owners been consolidated by communitization, unitization, force-pooling, etc.?
☐ Yes ☐ No If answer is "yes" type of consolidation _____
If answer is "no" list the owners and tract descriptions which have actually been consolidated. (Use reverse side of this form if necessary.) _____
No allowable will be assigned to the well until all interests have been consolidated (by communitization, unitization, forced-pooling, or otherwise) or until a non-standard unit, eliminating such interest, has been approved by the Division.



OPERATOR CERTIFICATION

I hereby certify that the information contained herein is true and complete to the best of my knowledge and belief.

Signature
Rick D. Gaddis

Printed Name
Rick D. Gaddis

Position
Petroleum Engineer

Company
Marathon Oil Company

Date
January 21, 1994

SURVEYOR CERTIFICATION

I hereby certify that the well location shown on this plat was plotted from field notes of actual surveys made by me or under my supervision, and that the same is true and correct to the best of my knowledge and belief.

Date Surveyed

Signature & Seal of
Professional Surveyor

See Original C-102

Certificate No.

0 330 660 990 1320 1650 1980 2310 2640 2000 1500 1000 500 0

Submit to Appropriate
District Office
State Lease - 4 copies
Fee Lease - 3 copies

State of New Mexico
Energy, Minerals and Natural Resources Department

Form C-102
Revised 1-1-89

OIL CONSERVATION DIVISION

P.O. Box 2088
Santa Fe, New Mexico 87504-2088

DISTRICT I
P.O. Box 1980, Hobbs, NM 88240

DISTRICT II
P.O. Drawer DD, Artesia, NM 88210

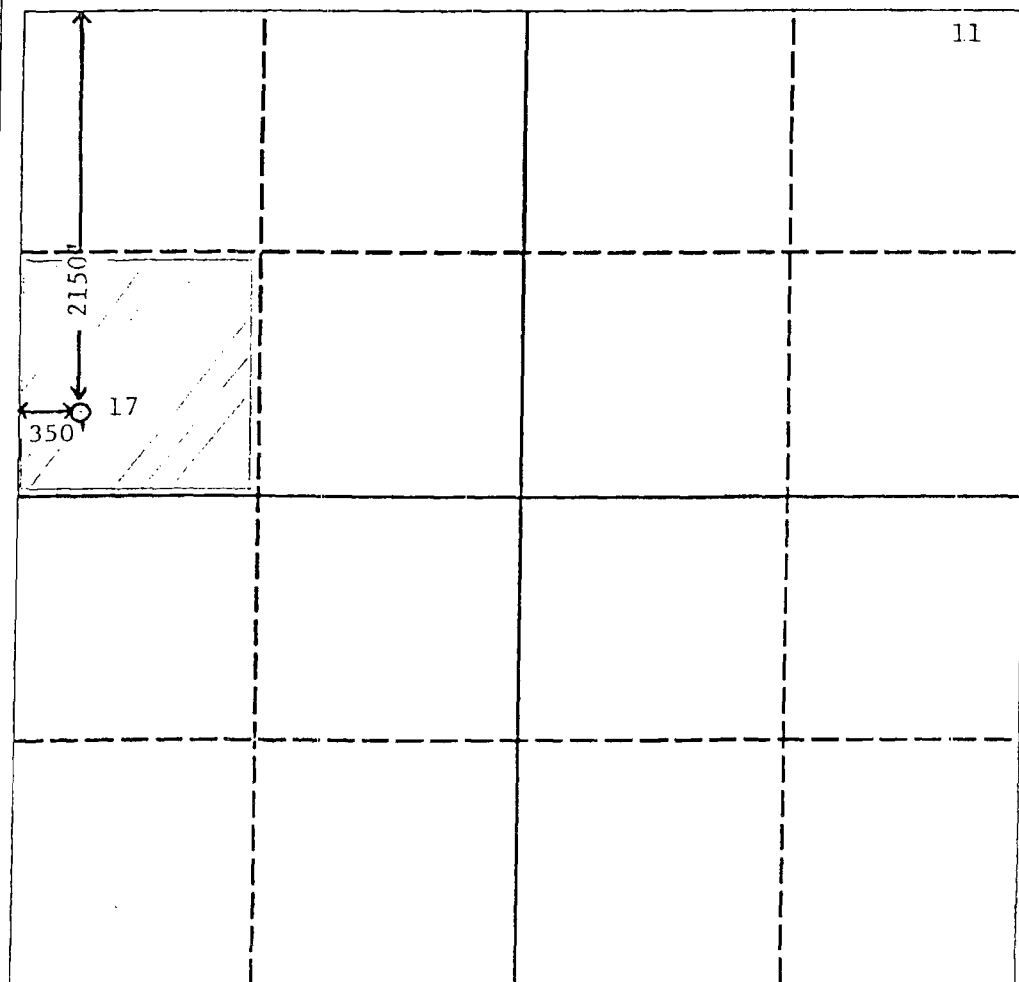
DISTRICT III
1000 Rio Brazos Rd., Aztec, NM 87410

WELL LOCATION AND ACREAGE DEDICATION PLAT

All Distances must be from the outer boundaries of the section

Operator Marathon Oil Company			Lease Lou Worthan		Well No. 17
Unit Letter E	Section 11	Township 22-S	Range 37-E	County Lea	
Actual Footage Location of Well: 2150 feet from the North line and 350 feet from the West line					
Ground level Elev. 3368'	Producing Formation Abo		Pool Wantz Abo	Dedicated Acreage: 40 Acres	

1. Outline the acreage dedicated to the subject well by colored pencil or hatchure marks on the plat below.
2. If more than one lease is dedicated to the well, outline each and identify the ownership thereof (both as to working interest and royalty).
3. If more than one lease of different ownership is dedicated to the well, have the interest of all owners been consolidated by communitization, unitization, force-pooling, etc.?
☐ Yes ☐ No If answer is "yes" type of consolidation _____
If answer is "no" list the owners and tract descriptions which have actually been consolidated. (Use reverse side of this form if necessary.) _____
No allowable will be assigned to the well until all interests have been consolidated (by communitization, unitization, forced-pooling, or otherwise) or until a non-standard unit, eliminating such interest, has been approved by the Division.



OPERATOR CERTIFICATION

I hereby certify that the information contained herein is true and complete to the best of my knowledge and belief.

Signature

Rick D. Gaddis

Printed Name

Rick D. Gaddis

Position

Petroleum Engineer

Company

Marathon Oil Company

Date

January 21, 1994

SURVEYOR CERTIFICATION

I hereby certify that the well location shown on this plat was plotted from field notes of actual surveys made by me or under my supervision, and that the same is true and correct to the best of my knowledge and belief.

Date Surveyed

Signature & Seal of
Professional Surveyor

See Original C-102

Certificate No.

0 330 660 990 1320 1650 1980 2310 2640 2000 1500 1000 500 0

OIL CONSERVATION DIVISION

STATE OF NEW MEXICO

P. O. BOX 2008

ENERGY AND MINERALS DEPARTMENT

SANTA FE, NEW MEXICO 87501

FD-5-102

revised 10-1-78

All distances must be from the outer boundaries of the Section.

Operator Marathon Oil Company			Lease Lou Worthan			Well No. 18		
Unit Letter H	Section 11	Township 22-S	Range 37-E	County Lea				
Actual Postage Location of Well:								
1905 feet from the North line and			860 feet from the East line					
Ground Level Elev. 3355'	Producing Formation Tubb Oil Zone		Pool Tubb Oil and Gas (OIL)			Dedicated Acreage: 40 Acres		

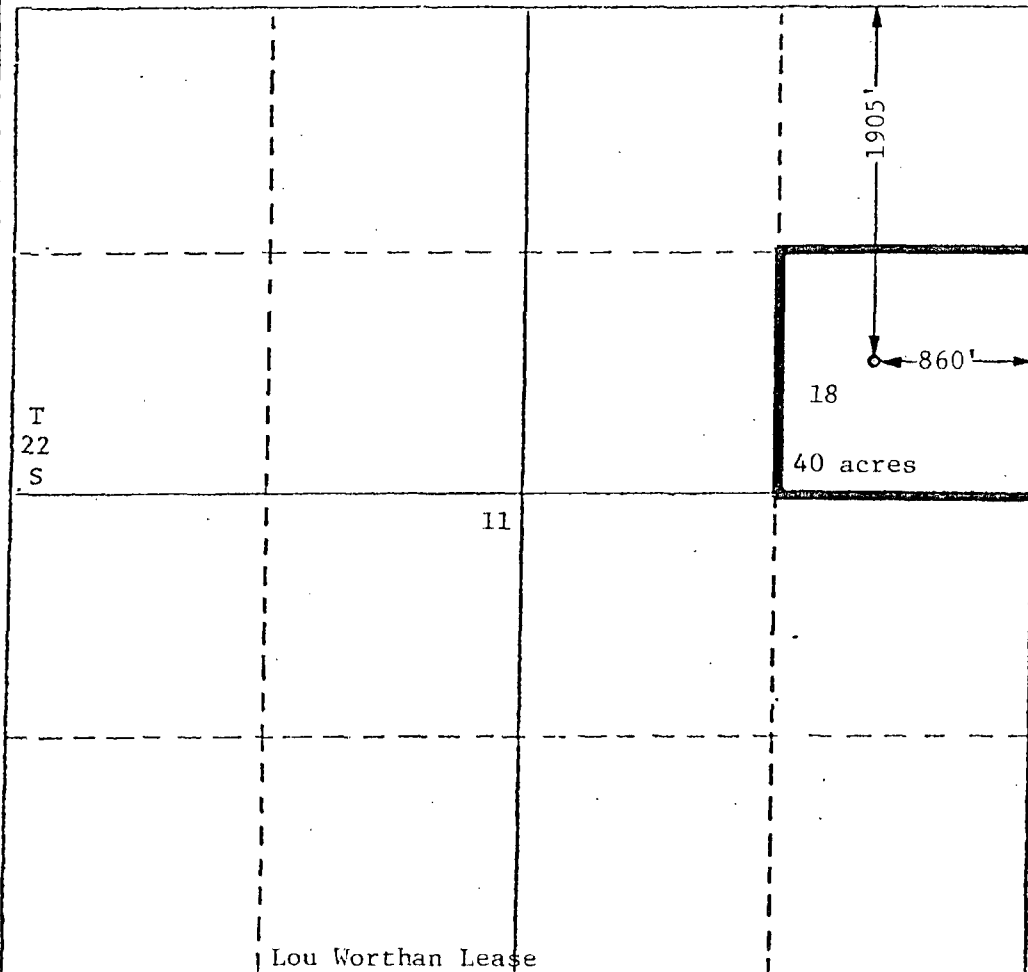
1. Outline the acreage dedicated to the subject well by colored pencil or hatchure marks on the plat below.
2. If more than one lease is dedicated to the well, outline each and identify the ownership thereof (both as to working interest and royalty).
3. If more than one lease of different ownership is dedicated to the well, have the interests of all owners been consolidated by communitization, unitization, force-pooling, etc?

☐ Yes ☐ No If answer is "yes," type of consolidation _____

If answer is "no," list the owners and tract descriptions which have actually been consolidated. (Use reverse side of this form if necessary.) _____

No allowable will be assigned to the well until all interests have been consolidated (by communitization, unitization, forced-pooling, or otherwise) or until a non-standard unit, eliminating such interests, has been approved by the Division.

R-37E



CERTIFICATION

I hereby certify that the information contained herein is true and complete to the best of my knowledge and belief.

Name
Calvin C. Saathoff
Position
Operations Superintendent
Company
Marathon Oil Company
Date
March 16, 1981

I hereby certify that the well location shown on this plat was plotted from field notes of actual surveys made by me or under my supervision, and that the same is true and correct to the best of my knowledge and belief.

Date Surveyed

Registered Professional Engineer
and/or Land Surveyor

Certificate No.

0 330 660 990 1320 1650 1980 2310 2640 2970 3300 3630 3960 4290 4620 4950 5280 5610 5940 6270 6600

District I
1625 N. French Dr., Hobbs, NM 88240
District II
1301 W. Grand Avenue, Artesia, NM 88210
District III
1000 Rio Brazos Rd., Aztec, NM 87410
District IV
1220 S. St. Francis Dr., Santa Fe, NM 87505

State of New Mexico
Energy, Minerals & Natural Resources

Form C-102
Revised June 10, 2003

OIL CONSERVATION DIVISION
1220 South St. Francis Dr.
Santa Fe, NM 87505

Submit to Appropriate District Office
State Lease - 4 Copies
Fee Lease - 3 Copies

☐ AMENDED REPORT

WELL LOCATION AND ACREAGE DEDICATION PLAT

¹ API Number 30-025-25568	² Pool Code 62700	³ Pool Name Wantz Abo
⁴ Property Code 006488	⁵ Property Name Lou Worthan	⁶ Well Number 18
⁷ OGRID No.	⁸ Operator Name Marathon Oil Company	⁹ Elevation 3355'

¹⁰ Surface Location

UL or lot no. H	Section 11	Township 22-S	Range 37-E	Lot. Idn.	Feet from the 1905	North/South line North	Feet from the 860	East/West line East	County Lea
---------------------------	----------------------	-------------------------	----------------------	-----------	------------------------------	----------------------------------	-----------------------------	-------------------------------	----------------------

¹¹ Bottom Hole Location If Different From Surface

UL or lot no.	Section	Township	Range	Lot. Idn.	Feet from the	North/South line	Feet from the	East/West line	County
---------------	---------	----------	-------	-----------	---------------	------------------	---------------	----------------	--------

¹² Dedicated Acres 40	¹³ Joint or Infill No	¹⁴ Consolidation Code	¹⁵ Order No.
--	--	----------------------------------	-------------------------

NO ALLOWABLE WILL BE ASSIGNED TO THIS COMPLETION UNTIL ALL INTERESTS HAVE BEEN CONSOLIDATED OR A NON-STANDARD UNIT HAS BEEN APPROVED BY THE DIVISION

¹⁶				<p>1905'</p> <p>860'</p> <p>#18</p>	¹⁷ OPERATOR CERTIFICATION I hereby certify that the information contained herein is true and complete to the best of my knowledge and belief. <i>Charles E. Kendrick</i> Signature Charles E. Kendrick Printed Name Engineering Technician cekendrix@MarathonOil.com Title and E-mail Address 10/05/2004 Date
					¹⁸ SURVEYOR CERTIFICATION I hereby certify that the well location shown on this plat was plotted from field notes of actual surveys made by me or under my supervision, and that the same is true and correct to the best of my belief. Date of Survey Signature and Seal of Professional Surveyer:
					Certificate Number

NEW MEXICO OIL CONSERVATION COMMISSION
 WELL LOCATION AND ACREAGE DEDICATION PLAT

Form C-102
 Supersedes C-128
 Effective 1-1-65

All distances must be from the outer boundaries of the Section.

Operator Marathon Oil Co.			Lease Lou Worthan		Well No. 18
Unit Letter H	Section 11	Township 22 South	Range 37 East	County Lea	
Actual Footage Location of Well: 1905 feet from the North line and 860 feet from the East line					
Ground Level Elev. 3353.0	Producing Formation Granite Wash	Pool Wantz Granite Wash		Dedicated Acreage: 40 Acres	

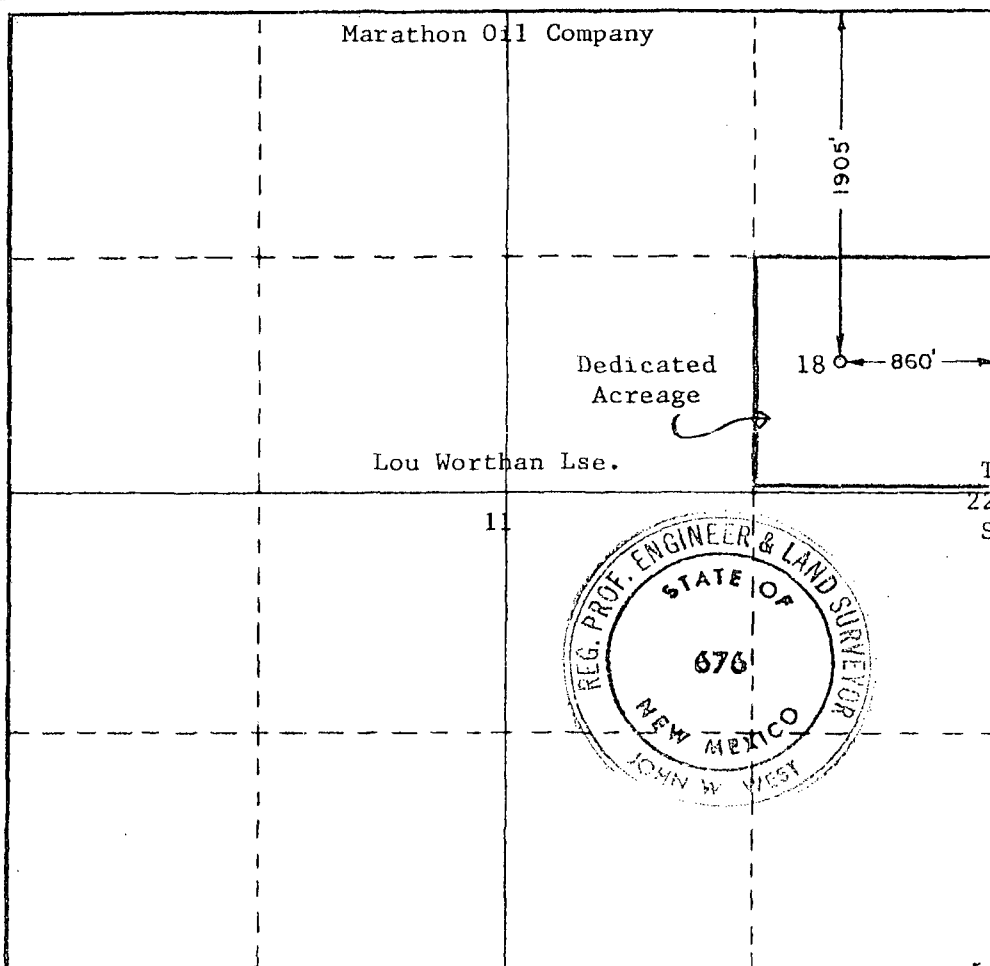
1. Outline the acreage dedicated to the subject well by colored pencil or hachure marks on the plat below.
2. If more than one lease is dedicated to the well, outline each and identify the ownership thereof (both as to working interest and royalty).
3. If more than one lease of different ownership is dedicated to the well, have the interests of all owners been consolidated by communitization, unitization, force-pooling, etc?

☐ Yes ☐ No If answer is "yes," type of consolidation _____

If answer is "no," list the owners and tract descriptions which have actually been consolidated. (Use reverse side of this form if necessary.) _____

No allowable will be assigned to the well until all interests have been consolidated (by communitization, unitization, forced-pooling, or otherwise) or until a non-standard unit, eliminating such interests, has been approved by the Commission.

R-37E



CERTIFICATION

I hereby certify that the information contained herein is true and complete to the best of my knowledge and belief.

Name William R. Huick

Position Production Engineer

Company Marathon Oil Company

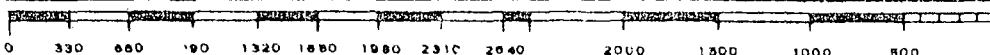
Date December 21, 1978

I hereby certify that the well location shown on this plat was plotted from field notes of actual surveys made by me or under my supervision, and that the same is true and correct to the best of my knowledge and belief.

Date Surveyed June 4, 1977

Registered Professional Engineer and/or Land Surveyor

John W. West
 Certificate No. **676**



District I
1625 N. French Dr., Hobbs, NM 88240
District II
1301 W. Grand Avenue, Artesia, NM 88210
District III
1000 Rio Brazos Rd., Aztec, NM 87410
District IV
1220 S. St. Francis Dr., Santa Fe, NM 87505

State of New Mexico
Energy, Minerals & Natural Resources Department
OIL CONSERVATION DIVISION
1220 South St. Francis Dr.
Santa Fe, NM 87505

Form C-102
Revised October 15, 2009
Submit one copy to appropriate
District Office

☒ AMENDED REPORT

WELL LOCATION AND ACREAGE DEDICATION PLAT

¹ API Number 30-025-29469	² Pool Code 6660	³ Pool Name BLINEBRY OIL & GAS (OIL)
⁴ Property Code 306605	⁵ Property Name LOU WORTHAN	⁶ Well Number 19
⁷ OGRID No. 873	⁸ Operator Name APACHE CORPORATION	⁹ Elevation

¹⁰ Surface Location									
UL or lot no. D	Section 11	Township 22 S	Range 37 E	Lot Idn	Feet from the 680	North/South line N	Feet from the 880	East/West line W	County LEA

¹¹ Bottom Hole Location If Different From Surface									
UL or lot no.	Section	Township	Range	Lot Idn	Feet from the	North/South line	Feet from the	East/West line	County
¹² Dedicated Acres 40		¹³ Joint or Infill		¹⁴ Consolidation Code		¹⁵ Order No. NSP-1937-A-npt			

No allowable will be assigned to this completion until all interests have been consolidated or a non-standard unit has been approved by the division.

¹⁶	¹⁷ OPERATOR CERTIFICATION			
	I hereby certify that the information contained herein is true and complete to the best of my knowledge and belief, and that this organization either owns a working interest or unleased mineral interest in the land including the proposed bottom hole location or has a right to drill this well at this location pursuant to a contract with an owner of such a mineral or working interest, or to a voluntary pooling agreement or a compulsory pooling order heretofore entered by this division.			
	Signature <i>Mohammed Ham</i>		Date 1/14/2010	
	Nichelle Hansen Printed Name			
	¹⁸ SURVEYOR CERTIFICATION			
	I hereby certify that the well location shown on this plat was plotted from field notes of actual surveys made by me or under my supervision, and that the same is true and correct to the best of my belief.			
	Date of Survey			
	Signature and Seal of Professional Surveyor:			
	Certificate Number			

NEW MEXICO OIL CONSERVATION COMMISSION
WELL LOCATION AND ACREAGE DEDICATION PLAT

Form C-102
Superseded C-128
Effective 1-1-85

All distances must be from the outer boundaries of the Section

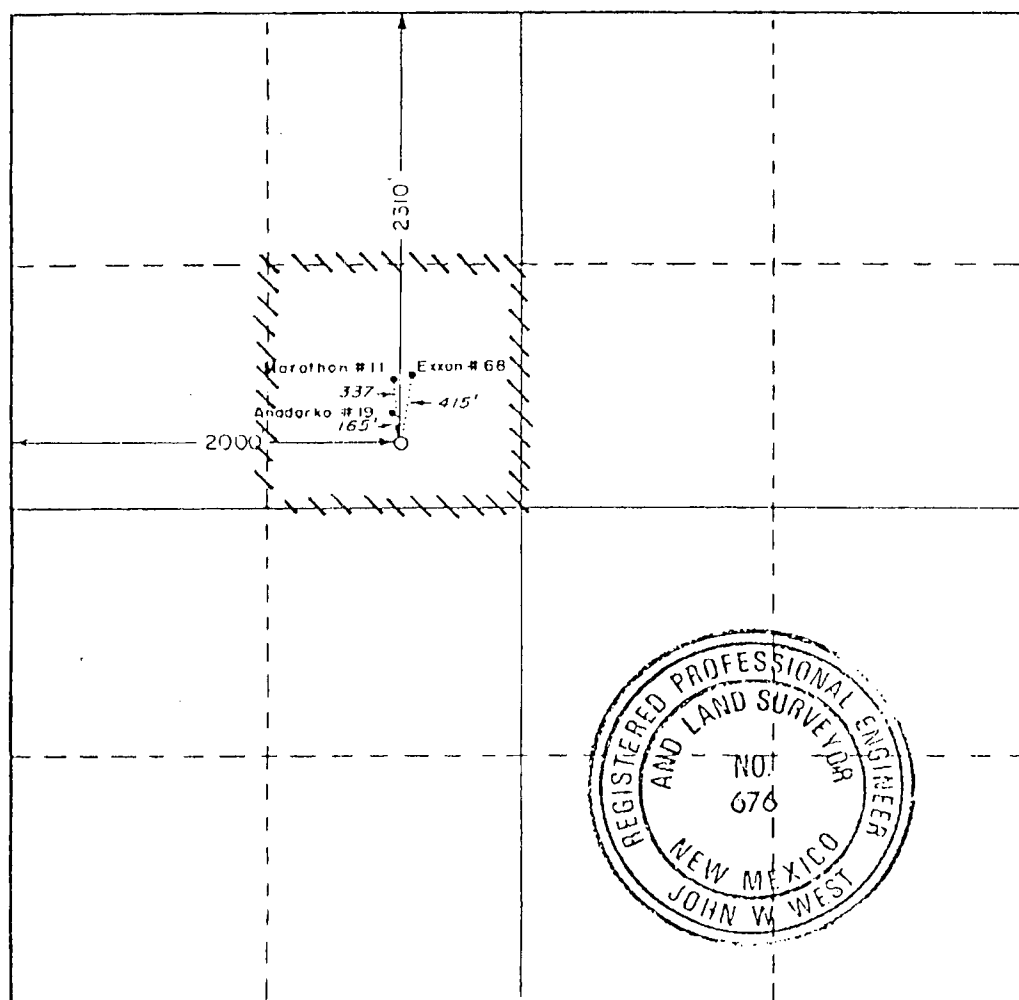
Operator Marathon Oil Company			Lessee Lou Wortham		Well No. 20
Unit Letter F	Section 11	Township 22 South	Range 37 East	County Lea	
Actual Surface Location of Well: 2310 feet from the north line and 2000 feet from the west line					
Ground Level Elev. 3355.3	Producing Formation Abo		Pool Wantz-Abo	Dedicated Acreage 40 Acres	

1. Outline the acreage dedicated to the subject well by colored pencil or hatchure marks on the plat below.
2. If more than one lease is dedicated to the well, outline each and identify the ownership thereof (both as to working interest and royalty).
3. If more than one lease of different ownership is dedicated to the well, have the interests of all owners been consolidated by communitization, unitization, force-pooling, etc?

☐ Yes ☐ No If answer is "yes," type of consolidation _____

If answer is "no," list the owners and tract descriptions which have actually been consolidated (Use reverse side of this form if necessary.) _____

No allowable will be assigned to the well until all interests have been consolidated (by communitization, unitization, forced-pooling, or otherwise) or until a non-standard unit, eliminating such interests, has been approved by the Commission.



CERTIFICATION

I hereby certify that the information contained herein is true and complete to the best of my knowledge and belief.

Terry L. Rivers
Name

T.L. Rivers
Position

Dist. Drilg Superintendent
Company

Marathon Oil Company

Date
3-2-88

I hereby certify that the well location shown on this plat was plotted from field notes of actual surveys made by me or under my supervision, and that the same is true and correct to the best of my knowledge and belief.

Date Surveyed
February 25, 1988

Registered Professional Engineer
and/or Land Surveyor

John W. West

Certificate No. JOHN W. WEST, 676
RONALD L. EIDSON, 1219

NEW MEXICO OIL CONSERVATION COMMISSION
WELL LOCATION AND ACREAGE DEDICATION PLAT

Form C-182
Superseded C-128
Effective 1-1-85

All distances must be from the outer boundaries of the Section

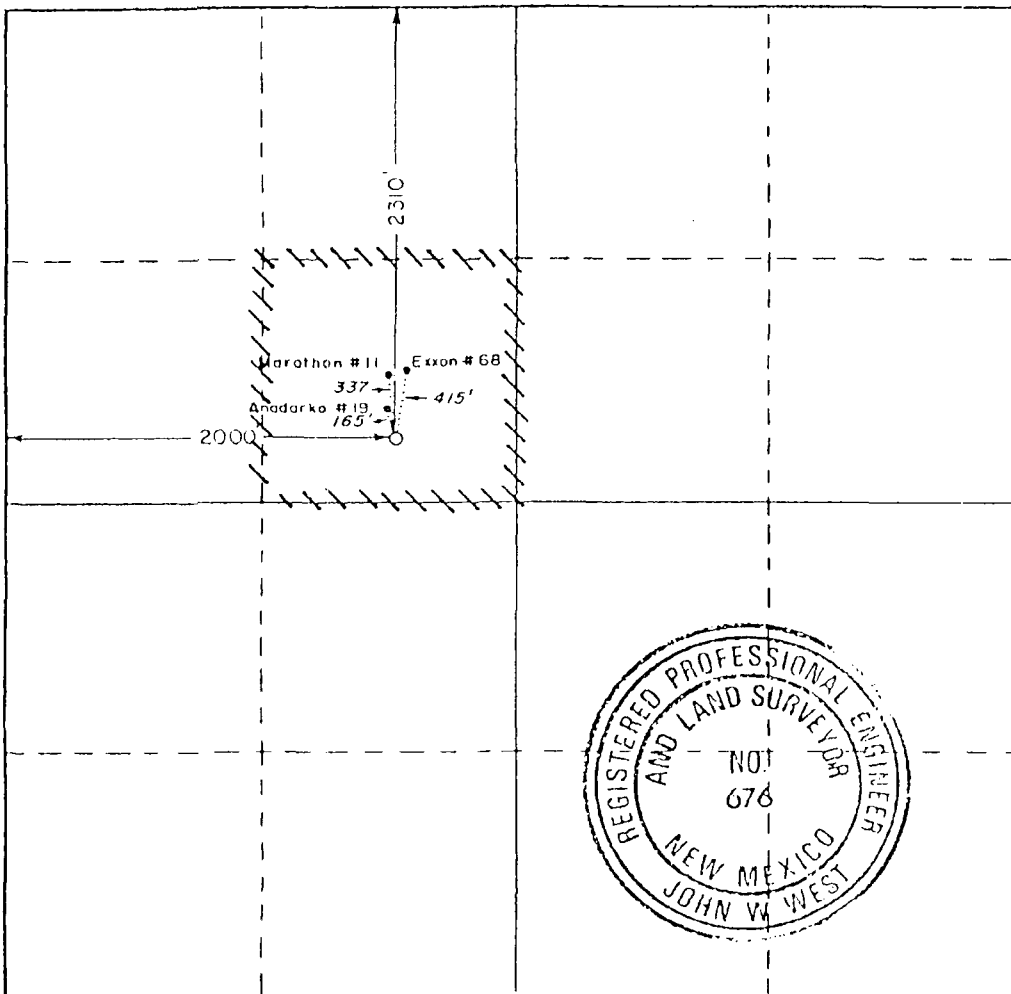
Operator Marathon Oil Company			Location Lea Worthan		Well No. 20
Unit Letter F	Section 11	Township 22 South	Range 37 East	County Lea	
Actual Surface Location of Well: 2310 feet from the north line and 2000 feet from the west line					
Ground Level Elev. 3355.3	Producing Formation Granite Wash		Pool Washby Granite Wash	Drill Hole Diameter 40	

1. Outline the acreage dedicated to the subject well by colored pencil or hatchure marks on the plat below.
2. If more than one lease is dedicated to the well, outline each and identify the ownership thereof (both as to working interest and royalty).
3. If more than one lease of different ownership is dedicated to the well, have the interests of all owners been consolidated by communitization, unitization, force-pooling, etc?

☐ Yes ☐ No If answer is "yes," type of consolidation _____

If answer is "no," list the owners and tract descriptions which have actually been consolidated (Use reverse side of this form if necessary.) _____

No allowable will be assigned to the well until all interests have been consolidated (by communitization, unitization, forced-pooling, or otherwise) or until a non-standard unit, eliminating such interests, has been approved by the Commission.



CERTIFICATION

I hereby certify that the information contained herein is true and complete to the best of my knowledge and belief.

Jerry L. Rivers
Name

T.L. Rivers
Position

Dist. Drlg Superintendent
Company

Marathon Oil Company
Date

3-2-88

I hereby certify that the well location shown on this plat was plotted from field notes of actual surveys made by me or under my supervision, and that the same is true and correct to the best of my knowledge and belief.

Date Surveyed
February 25, 1988

Registered Professional Engineer and/or Land Surveyor

John W. West
Certificate No. **JOHN W. WEST, 676**

District I
1625 N. French Dr., Hobbs, NM 88240
District II
1301 W. Gaud Avenue, Artesia, NM 88210
District III
1600 Rio Brazos Rd., Aztec, NM 87410
District IV
1220 S. St. Francis Dr., Santa Fe, NM 87505

State of New Mexico
Energy, Minerals & Natural Resources Department
OIL CONSERVATION DIVISION
1220 South St. Francis Dr.
Santa Fe, NM 87505

Form C-102
Revised October 15, 2009
Submit one copy to appropriate
District Office

☒ AMENDED REPORT

WELL LOCATION AND ACREAGE DEDICATION PLAT

¹ API Number 30-025-33426		² Pool Code 72480	³ Pool Name BLINEBRY OIL & GAS (PRO GAS)
⁴ Property Code 306605	⁵ Property Name LOU WORTHAN		⁶ Well Number 21
⁷ OGRID No. 873	⁸ Operator Name APACHE CORPORATION		⁹ Elevation

¹⁰ Surface Location

UL or lot no. B	Section 11	Township 22 S	Range 37 E	Lot Idn	Feet from the 660	North/South line N	Feet from the 1350	East/West line E	County LEA
--------------------	---------------	------------------	---------------	---------	----------------------	-----------------------	-----------------------	---------------------	---------------

¹¹ Bottom Hole Location If Different From Surface

UL or lot no.	Section	Township	Range	Lot Idn	Feet from the	North/South line	Feet from the	East/West line	County
¹² Dedicated Acres 40		¹³ Joint or Infill		¹⁴ Consolidation Code		¹⁵ Order No. NSP-1937-A-npt			

No allowable will be assigned to this completion until all interests have been consolidated or a non-standard unit has been approved by the division.

¹⁶ 	¹⁷ OPERATOR CERTIFICATION I hereby certify that the information contained herein is true and complete to the best of my knowledge and belief, and that this organization either owns a working interest or undivided mineral interest in the tract including the proposed bottom hole location or has a right to drill this well at this location pursuant to a contract with an owner of such a mineral or working interest, or to a voluntary pooling agreement or a compulsory pooling order heretofore entered by the division. Michelle Hanson Signature _____ Date 1/14/2010 Michelle Hanson Printed Name _____	
	¹⁸ SURVEYOR CERTIFICATION I hereby certify that the well location shown on this plat was plotted from field notes of actual surveys made by me or under my supervision, and that the same is true and correct to the best of my belief. Date of Survey _____ Signature and Seal of Professional Surveyor: _____ Certificate Number _____	

District I
1625 N. French Dr., Hobbs, NM 88240

District II
811 South First, Artesia, NM 88210

District III
1000 Rio Brazos Rd., Aztec, NM 87410

District IV
1220 S. St. Francis Dr., Santa Fe, NM 87505

State of New Mexico
Energy, Minerals & Natural Resources Department

OIL CONSERVATION DIVISION
1220 South St. Francis Dr
Santa Fe, NM 87505

Form C-102
Revised August 15, 2000

Submit to Appropriate District Office
State Lease - 4 Copies
Fee Lease - 3 Copies

☐ AMENDED REPORT

WELL LOCATION AND ACREAGE DEDICATION PLAT

¹ API Number 30-025-33426	² Pool Code 62700	³ Pool Name Wantz Abo
⁴ Property Code 6488	⁵ Property Name Lou Worthan	
⁷ OGRID No. 014021	⁸ Operator Name Marathon Oil Company	⁶ Well Number 21
		⁹ Elevation G.L. 3349'

¹⁰ Surface Location

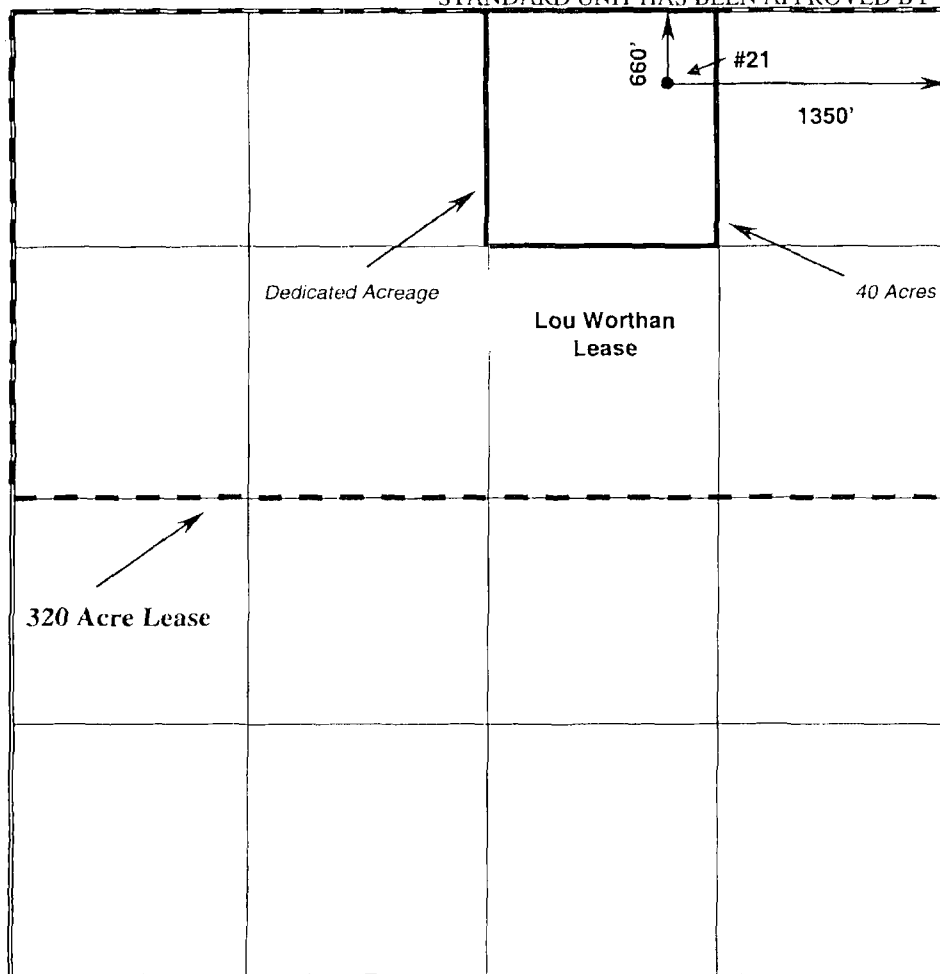

UL or lot no. B	Section 11	Township 22-S	Range 37E	Lot Idn -	Feet from the 660'	North/South line North	Feet from the 1350'	East/West line East	County Lea
---------------------------	----------------------	-------------------------	---------------------	---------------------	------------------------------	----------------------------------	-------------------------------	-------------------------------	----------------------

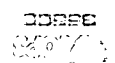
¹¹ Bottom Hole Location If Different From Surface

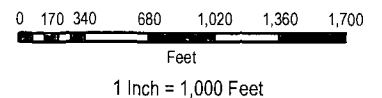
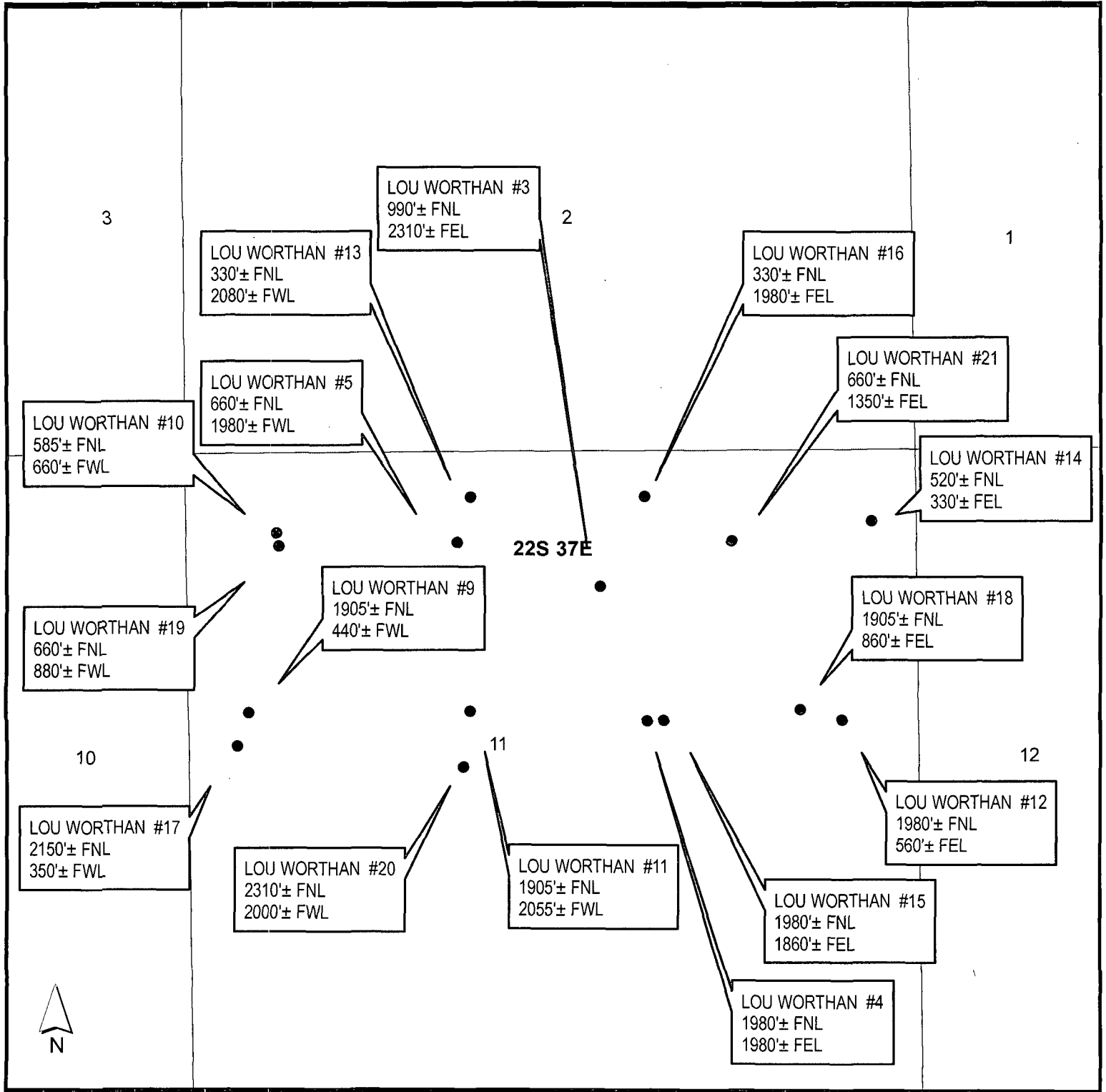
UL or lot no.	Section	Township	Range	Lot Idn	Feet from the	North/South line	Feet from the	East/West line	County
---------------	---------	----------	-------	---------	---------------	------------------	---------------	----------------	--------

¹² Dedicated Acres 40	¹³ Joint or Infill Y	¹⁴ Consolidation Code -	¹⁵ Order No. NSL-3676
--	---	--	--

NO ALLOWABLE WILL BE ASSIGNED TO THIS COMPLETION UNTIL ALL INTERESTS HAVE BEEN CONSOLIDATED OR A NON-STANDARD UNIT HAS BEEN APPROVED BY THE DIVISION

				<p>¹⁷ OPERATOR CERTIFICATION I hereby certify that the information contained herein is true and complete to the best of my knowledge and belief.</p> <p>Signature </p> <p>Printed Name Jim Chase</p> <p>Title Advanced Engineer Technician</p> <p>Date 10/15/02</p>
<p>SURVEYOR CERTIFICATION I hereby certify that the well location shown on this plat was plotted from field notes of actual surveys made by me or under my supervision, and that the same is true and correct to the best of my belief.</p> <p>Date of Survey</p> <p>Signature and Seal of Professional Surveyor:</p>				
<p>Certificate Number John W. West 676 Ronald J. Eidson 3239 Gary L. Jones 7977</p>				





Well Plat

Lou Worthan #4, 30-025-10213; Lou Worthan #5, 30-025-10214;
 Lou Worthan #9, 30-025-10218; Lou Worthan #10, 30-025-10219;
 Lou Worthan #11, 30-025-10220; Lou Worthan #12, 30-025-10221;
 Lou Worthan #13, 30-025-24943; Lou Worthan #14, 30-025-25255;
 Lou Worthan #15, 30-025-25304; Lou Worthan #16, 30-025-25383;
 Lou Worthan #17, 30-025-25405; Lou Worthan #18, 30-025-25568;
 Lou Worthan #19, 30-025-29469; Lou Worthan #20, 30-025-30285;
 Lou Worthan #21, 30-025-33426; Lou Worthan #3, 30-025-39549

Sec 11

T-22-S, R-37-E, NMPB&M

Lea County, New Mexico

6120 S. YALE / SUITE 1500 / TULSA, OKLAHOMA 74136



Central Region Land Department
(918) 491-4900
(918) 491-4854 (FAX)

February 11, 2010

New Mexico Oil Conservation Division
1220 South St. Francis Drive
Santa Fe, New Mexico 87505

RE: Surface Commingle
Lou Worthan Lease
Blinebry, Tubb, Drinkard, Abo and Granite Wash
Township 22 South, Range 37 East; N.M.P.M:
Section 11; N/2
Lea County, New Mexico

To Whom It May Concern:

Apache Corporation ("Apache") owns 100% leasehold working interest in the Blinebry, Tubb, Drinkard, Abo and Granite Wash formations on the referenced lands. Additionally, revenue interest ownership is identical among all of Apache's Lou Worthan Lease wells.

Should you have any questions, please contact the undersigned at (918) 491-4929.

Sincerely,
APACHE CORPORATION

A handwritten signature in black ink, appearing to read "D. Martin", with a stylized flourish at the end.

Dallas J. Martin
Registered Landman
(918) 491-4854 Fax