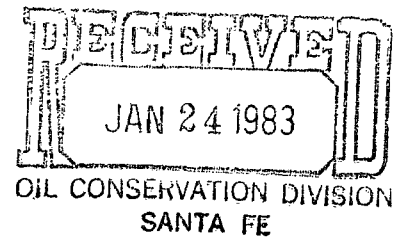


MCMLXXX

Sovereign Oil Company



January 20, 1983

State of New Mexico
Energy and Minerals Department
Oil Conservation Division
P. O. Box 2088
Santa Fe, New Mexico 87501

Gentlemen:

Re: Non-Standard Proration Unit

We have had previous administrative approval (Order NSP-1329) for a Mesa Verde unit consisting of 237.60 acres.

We would like to apply for approval of a Pictured Cliffs non-standard proration unit consisting of 118.2 acres which is the NW 1/4 section of Section 9, T32N R6W N.M.P.M. This acreage will be dedicated to our 32-6 No. 1 well to be drilled from a surface location of 900' FWL and 1730' FNL to the Pictured Cliffs at 900' FWL and 1500' FNL in Section 9, T32N R6W N.M.P.M.

Sincerely,

Merlyn L. Ridlen
Engineer

MLR:lcsn



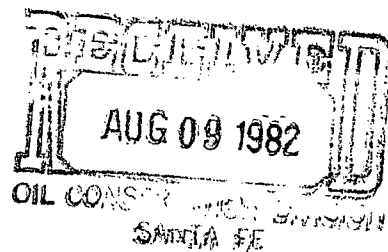
Sovereign Oil Company

MCMLXXX

*NSP 1329
Pictured Cliffs &
Mesaverde Formations
Rule 104 D II
No waiting
I want date*

August 3, 1982

State of New Mexico
Energy and Minerals Department
Oil Conservation Division
P. O. Box 2088
Santa Fe, New Mexico 87501



Gentlemen:

As illustrated on the attached map, we propose to drill a Mesaverde - Pictured Cliffs test well dedicating the north 1/2 of Section 9, Township 32 North, Range 6 West in San Juan County, New Mexico. Since Section 9 lies against the New Mexico-Colorado border, it is truncated with the acreage in the north 1/2 being 237.60 acres.

As per Rule 104 (D); (II) (d), our staked location does lie within the N 1/2 section and meets all requirements except that of acreage.

We hereby make application for a non-standard unit comprising the N 1/2 of Section 9.

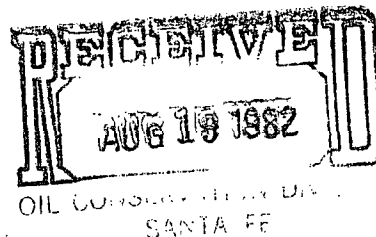
Sincerely,

Merle Ridlen

Merle Ridlen

MR:lcs

Enclosure





**Sovereign Oil
Company**

MCMLXXX

*SSA
132*

OIL CONSERVATION DIVISION

DEC 8 1982

DEC 8 1982

SOUTHLAND ROYALTY COMPANY, being an offset operator to the above proposed unit, has no objection to the approval of the unorthodox unit described in cover letter dated September 30, 1982 and applied for by Sovereign Oil Company and Ralph O. Bogeberg.

SOUTHLAND ROYALTY COMPANY

By: *CC Larsen*

OIL CONSERVATION DIVISION

STATE OF NEW MEXICO
ENERGY AND MINERALS DEPARTMENT

P. O. BOX 2088 -

SANTA FE, NEW MEXICO 87501

Form C-102
Revised 10-1-78

All distances must be from the outer boundaries of the Section.

Superior			Lease		Well No.	
SOVEREIGN OIL CO.					32-6 No. 1	
Unit Letter	Section	Township	Range	County		
D	9	32 NORTH	6 WEST	SAN JUAN COUNTY		
Actual Postage Location of Well:						
1140 feet from the NORTH line and		1190 feet from the WEST line				
Ground Level Elev.	Producing Formation		Pool	Dedicated Acres		
6084	Mesaverde-P.C.			237.60 Acres		

1. Outline the acreage dedicated to the subject well by colored pencil or hatchure marks on the plat below.
2. If more than one lease is dedicated to the well, outline each and identify the ownership thereof (both as to working interest and royalty).
3. If more than one lease of different ownership is dedicated to the well, have the interests of all owners been consolidated by communitization, unitization, force-pooling, etc?

☐ Yes ☐ No If answer is "yes," type of consolidation _____

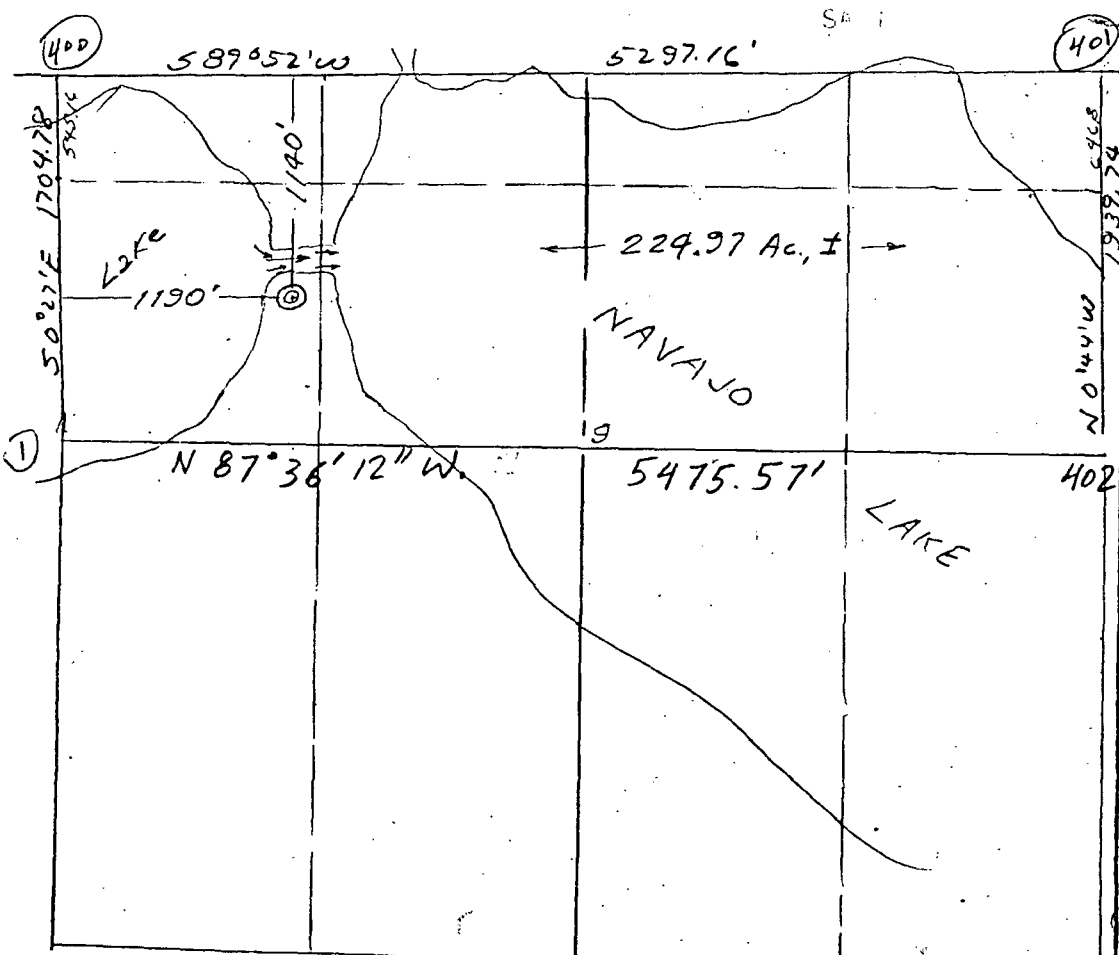
If answer is "no," list the owners and tract descriptions which have actually been consolidated. (Use reverse side of this form if necessary.) _____

No allowable will be assigned to the well until all interests have been consolidated (by communitization, unitization, forced-pooling, or otherwise) or until a non-standard unit, eliminating such interests, has been approved by the Division.

AUG 09 1982

OIL CO.

SANTA FE



CERTIFICATION

I hereby certify that the information contained herein is true and complete to the best of my knowledge and belief.

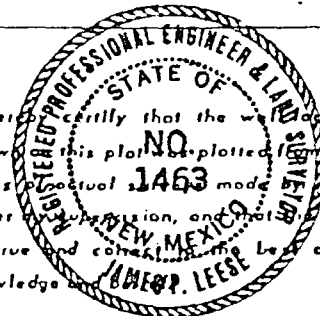
Name

Position

Company

Date

I hereby certify that the well location shown on this plat was plotted from field notes, actual location, and that the same is true and correct to the best of my knowledge and belief.



June 22, 1982

Date Surveyed

James P. Leese

Registered Professional Engineer
and/or Land Surveyor

Certificate No.

1463