



UNITED STATES
DEPARTMENT OF THE INTERIOR
GEOLOGICAL SURVEY

Draeger 1857
Roswell, New Mexico 88201

December 20, 1967

Bell Petroleum Company
P. O. Box 1538
Midland, Texas 79701

Attention: Mr. O. M. Salmen

Gentlemen:

Your letter of December 5, requests approval to commingle Cato San Andres oil production from Federal leases New Mexico 024136-A and 0354427.

The method of commingling described by your application is hereby approved, provided that the production from each lease is metered separately prior to commingling in the common storage tanks. Any addition or change in this system will require approval by this office. Form 9-361 Lessee's Monthly Report of Sales and Royalty should show all computations used in the calculation of the oil volume for each lesse.

You are requested to notify our Roswell District office when the installation is completed so that a field inspection of the system can be made.

Sincerely yours,

(ORIG. SGD.) JOHN A. ANDERSON

JOHN A. ANDERSON
Regional Oil & Gas Supervisor

cc:
Roswell
Accounts
RMOCC, Santa Fe ✓
File

MAIN OFFICE
OTB 182 700
'67 DEC 22 AM 10 56

UNITED STATES
DEPARTMENT OF JUSTICE
FEDERAL BUREAU OF INVESTIGATION



Washington, D. C.

RECEIVED
DEC 23 1964

TO : DIRECTOR, FBI (100-371090)

FROM : SAC, NEW YORK (100-100000)

SUBJECT: [Illegible]

RE: [Illegible]

DATE: [Illegible]

[Illegible signature and text]



Petroleum Company

P. O. BOX 1538
214 FIRST SAVINGS BUILDING
MIDLAND, TEXAS 79701

68 JAN 23 AM 8 23

HOME OFFICE
SUITE 400
700 WILSHIRE BOULEVARD
LOS ANGELES, CALIFORNIA 90017
(213) 629-3143

January 26, 1968

(915) MUTUAL 3-4269

(915) MUTUAL 3-4260

State of New Mexico
Oil Conservation Commission
P.O. Box 2088
Santa Fe, New Mexico

Attention: Daniel Nutter,
Chief Engineer

Re: Bell Petroleum Company's
Application dated Dec. 26, 1967,
for Authority to Commingle
Cato-San Andres Production
from our Conley Federal Lease
and our Packer-Federal Lease,
Sections 28 & 33, T8S, R30E
Chaves County, New Mexico

Gentlemen:

Please be advised that the commingling installation for the
above leases has been changed as shown on the attached schematic
diagram.

I hope that this installation meets your approval.

Very truly yours,

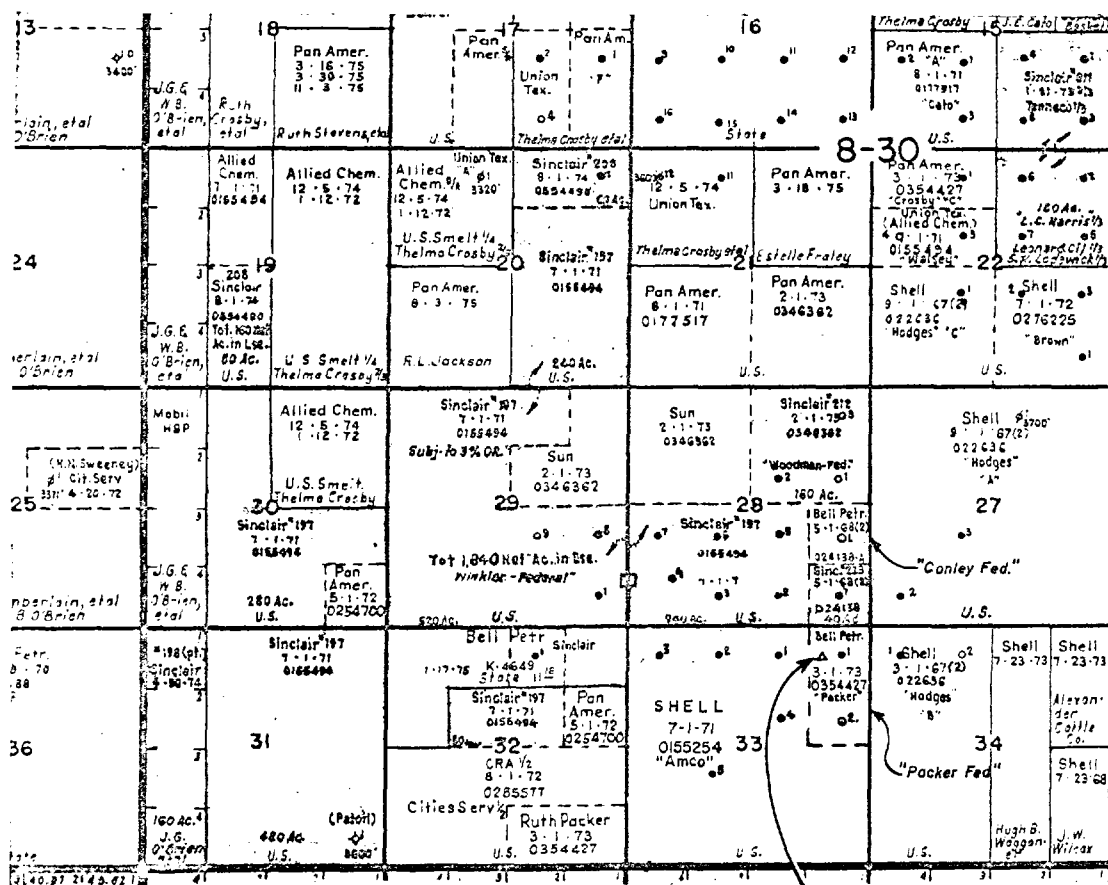
BELL PETROLEUM COMPANY

O. M. Salman

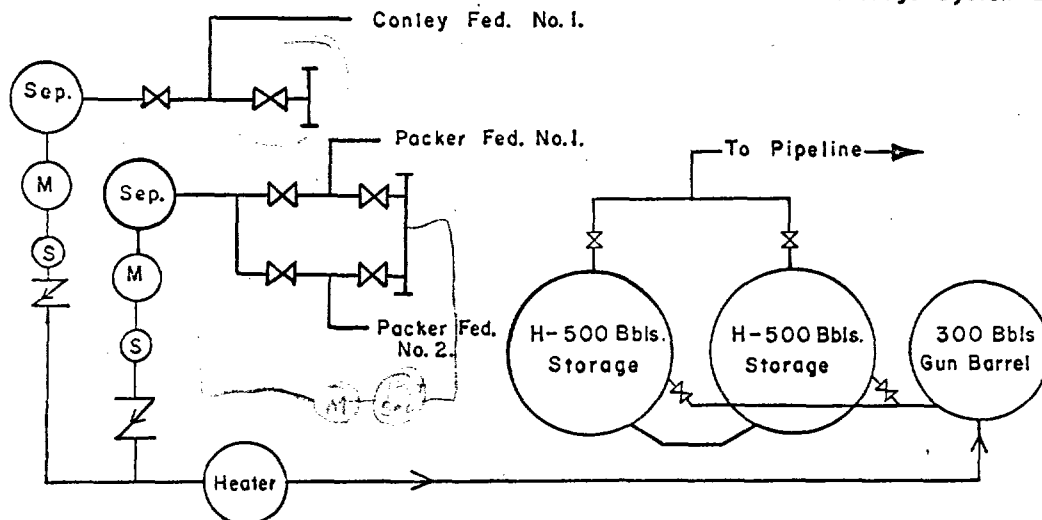
O. M. Salman,
Vice President

OMS/h
Encl. 2

BELL PETROLEUM COMPANY PROPOSED STORAGE SYSTEM CATO SAN ANDRES FIELD CHAVES COUNTY, NEW MEXICO



Storage System I



OIL CONSERVATION COMMISSION

P. O. BOX 2088

SANTA FE, NEW MEXICO 87501

January 12, 1968

**Bell Petroleum Company
P. O. Box 1538
Midland, Texas 79701**

Attention: Mr. O. M. Salmon

Gentlemen:

Reference is made to your application dated December 26, 1967, for authority to commingle Cato-San Andres production from your Conley Federal Lease and your Packer Federal Lease in Sections 28 and 33, Township 8 South, Range 30 East, Chaves County, New Mexico.

It does not appear to us that the commingling installation as depicted by the schematic diagram attached to your application provides adequate assurance against accidental or purposeful allocation of production from one lease to the other. Please re-submit the schematic diagram and provide for manual, pneumatic, or electrical inter-locking controls between the appropriate valves in the header installation as required by the Commission's commingling manual.

Very truly yours,

**DANIEL S. NUTTER
Chief Engineer**

DSN/esr

cc: Oil Conservation Commission (with enclosure) - Hobbs

P. O. BOX 5088

the 1990s, the number of people in the world who are illiterate has increased from 750 million to 850 million. The number of illiterate people in the world is still increasing, and the rate of illiteracy is still high. In 1990, the rate of illiteracy was 21.5% in the world, 27.5% in the developing countries, and 35.5% in the least developed countries. In 2000, the rate of illiteracy was 21.5% in the world, 27.5% in the developing countries, and 35.5% in the least developed countries. In 2010, the rate of illiteracy was 21.5% in the world, 27.5% in the developing countries, and 35.5% in the least developed countries. In 2015, the rate of illiteracy was 21.5% in the world, 27.5% in the developing countries, and 35.5% in the least developed countries. In 2020, the rate of illiteracy was 21.5% in the world, 27.5% in the developing countries, and 35.5% in the least developed countries.

1997, 1998, 1999, 2000, 2001, 2002, 2003, 2004, 2005, 2006, 2007, 2008, 2009, 2010, 2011, 2012, 2013, 2014, 2015, 2016, 2017, 2018, 2019, 2020, 2021, 2022, 2023, 2024, 2025, 2026, 2027, 2028, 2029, 2030, 2031, 2032, 2033, 2034, 2035, 2036, 2037, 2038, 2039, 2040, 2041, 2042, 2043, 2044, 2045, 2046, 2047, 2048, 2049, 2050, 2051, 2052, 2053, 2054, 2055, 2056, 2057, 2058, 2059, 2060, 2061, 2062, 2063, 2064, 2065, 2066, 2067, 2068, 2069, 2070, 2071, 2072, 2073, 2074, 2075, 2076, 2077, 2078, 2079, 2080, 2081, 2082, 2083, 2084, 2085, 2086, 2087, 2088, 2089, 2090, 2091, 2092, 2093, 2094, 2095, 2096, 2097, 2098, 2099, 2100, 2101, 2102, 2103, 2104, 2105, 2106, 2107, 2108, 2109, 2110, 2111, 2112, 2113, 2114, 2115, 2116, 2117, 2118, 2119, 2120, 2121, 2122, 2123, 2124, 2125, 2126, 2127, 2128, 2129, 2130, 2131, 2132, 2133, 2134, 2135, 2136, 2137, 2138, 2139, 2140, 2141, 2142, 2143, 2144, 2145, 2146, 2147, 2148, 2149, 2150, 2151, 2152, 2153, 2154, 2155, 2156, 2157, 2158, 2159, 2160, 2161, 2162, 2163, 2164, 2165, 2166, 2167, 2168, 2169, 2170, 2171, 2172, 2173, 2174, 2175, 2176, 2177, 2178, 2179, 2180, 2181, 2182, 2183, 2184, 2185, 2186, 2187, 2188, 2189, 2190, 2191, 2192, 2193, 2194, 2195, 2196, 2197, 2198, 2199, 2200, 2201, 2202, 2203, 2204, 2205, 2206, 2207, 2208, 2209, 2210, 2211, 2212, 2213, 2214, 2215, 2216, 2217, 2218, 2219, 2220, 2221, 2222, 2223, 2224, 2225, 2226, 2227, 2228, 2229, 2230, 2231, 2232, 2233, 2234, 2235, 2236, 2237, 2238, 2239, 2240, 2241, 2242, 2243, 2244, 2245, 2246, 2247, 2248, 2249, 2250, 2251, 2252, 2253, 2254, 2255, 2256, 2257, 2258, 2259, 2260, 2261, 2262, 2263, 2264, 2265, 2266, 2267, 2268, 2269, 2270, 2271, 2272, 2273, 2274, 2275, 2276, 2277, 2278, 2279, 2280, 2281, 2282, 2283, 2284, 2285, 2286, 2287, 2288, 2289, 2290, 2291, 2292, 2293, 2294, 2295, 2296, 2297, 2298, 2299, 2300, 2301, 2302, 2303, 2304, 2305, 2306, 2307, 2308, 2309, 2310, 2311, 2312, 2313, 2314, 2315, 2316, 2317, 2318, 2319, 2320, 2321, 2322, 2323, 2324, 2325, 2326, 2327, 2328, 2329, 2330, 2331, 2332, 2333, 2334, 2335, 2336, 2337, 2338, 2339, 2340, 2341, 2342, 2343, 2344, 2345, 2346, 2347, 2348, 2349, 2350, 2351, 2352, 2353, 2354, 2355, 2356, 2357, 2358, 2359, 2360, 2361, 2362, 2363, 2364, 2365, 2366, 2367, 2368, 2369, 2370, 2371, 2372, 2373, 2374, 2375, 2376, 2377, 2378, 2379, 2380, 2381, 2382, 2383, 2384, 2385, 2386, 2387, 2388, 2389, 2390, 2391, 2392, 2393, 2394, 2395, 2396, 2397, 2398, 2399, 2400, 2401, 2402, 2403, 2404, 2405, 2406, 2407, 2408, 2409, 2410, 2411, 2412, 2413, 2414, 2415, 2416, 2417, 2418, 2419, 2420, 2421, 2422, 2423, 2424, 2425, 2426, 2427, 2428, 2429, 2430, 2431, 2432, 2433, 2434, 2435, 2436, 2437, 2438, 2439, 2440, 2441, 2442, 2443, 2444, 2445, 2446, 2447, 2448, 2449, 2450, 2451, 2452, 2453, 2454, 2455, 2456, 2457, 2458, 2459, 2460, 2461, 2462, 2463, 2464, 2465, 2466, 2467, 2468, 2469, 2470, 2471, 2472, 2473, 2474, 2475, 2476, 2477, 2478, 2479, 2480, 2481, 2482, 2483, 2484, 2485, 2486, 2487, 2488, 2489, 2490, 2491, 2492, 2493, 2494, 2495, 2496, 2497, 2498, 2499, 2500, 2501, 2502, 2503, 2504, 2505, 2506, 2507, 2508, 2509, 2510, 2511, 2512, 2513, 2514, 2515, 2516, 2517, 2518, 2519, 2520, 2521, 2522, 2523, 2524, 2525, 2526, 2527, 2528, 2529, 2530, 2531, 2532, 2533, 2534, 2535, 2536, 2537, 2538, 2539, 2540, 2541, 2542, 2543, 2544, 2545, 2546, 2547, 2548, 2549, 2550, 2551, 2552, 2553, 2554, 2555, 2556, 2557, 2558, 2559, 2560, 2561, 2562, 2563, 2564, 2565, 2566, 2567, 2568, 2569, 2570, 2571, 2572, 2573, 2574, 2575, 2576, 2577, 2578, 2579, 2580, 2581, 2582, 2583, 2584, 2585, 2586, 2587, 2588, 2589, 2590, 2591, 2592, 2593, 2594, 2595, 2596, 2597, 2598, 2599, 2600, 2601, 2602, 2603, 2604, 2605, 2606, 2607, 2608, 2609, 2610, 2611, 2612, 2613, 2614, 2615, 2616, 2617, 2618, 2619, 2620, 2621, 2622, 2623, 2624, 2625, 2626, 2627, 2628, 2629, 2630, 2631, 2632, 2633, 2634, 2635, 2636, 2637, 2638, 2639, 2640, 2641, 2642, 2643, 2644, 2645, 2646, 2647, 2648, 2649, 2650, 2651, 2652, 2653, 2654, 2655, 2656, 2657, 2658, 2659, 2660, 2661, 2662, 2663, 2664, 2665, 2666, 2667, 2668, 2669, 2670, 2671, 2672, 2673, 2674, 2675, 2676, 2677, 2678, 26

1. The first step in the process of the investigation is the identification of the problem. This is done by the investigator who is responsible for the study. The investigator must first identify the problem and then determine the scope of the study. The next step is to design the study. This involves determining the methods to be used and the data to be collected. The third step is to collect the data. This is done by the investigator who is responsible for the study. The fourth step is to analyze the data. This is done by the investigator who is responsible for the study. The fifth step is to interpret the results. This is done by the investigator who is responsible for the study. The sixth step is to write the report. This is done by the investigator who is responsible for the study. The seventh step is to present the results. This is done by the investigator who is responsible for the study. The eighth step is to discuss the results. This is done by the investigator who is responsible for the study. The ninth step is to conclude the study. This is done by the investigator who is responsible for the study. The tenth step is to publish the results. This is done by the investigator who is responsible for the study.

the 1990s, the number of people in the world who are illiterate has increased from 750 million to 850 million. The number of illiterate people in the world is expected to increase to 900 million by the year 2015. The number of illiterate people in the world is expected to increase to 950 million by the year 2020. The number of illiterate people in the world is expected to increase to 1 billion by the year 2025. The number of illiterate people in the world is expected to increase to 1.1 billion by the year 2030. The number of illiterate people in the world is expected to increase to 1.2 billion by the year 2035. The number of illiterate people in the world is expected to increase to 1.3 billion by the year 2040. The number of illiterate people in the world is expected to increase to 1.4 billion by the year 2045. The number of illiterate people in the world is expected to increase to 1.5 billion by the year 2050. The number of illiterate people in the world is expected to increase to 1.6 billion by the year 2055. The number of illiterate people in the world is expected to increase to 1.7 billion by the year 2060. The number of illiterate people in the world is expected to increase to 1.8 billion by the year 2065. The number of illiterate people in the world is expected to increase to 1.9 billion by the year 2070. The number of illiterate people in the world is expected to increase to 2 billion by the year 2075. The number of illiterate people in the world is expected to increase to 2.1 billion by the year 2080. The number of illiterate people in the world is expected to increase to 2.2 billion by the year 2085. The number of illiterate people in the world is expected to increase to 2.3 billion by the year 2090. The number of illiterate people in the world is expected to increase to 2.4 billion by the year 2095. The number of illiterate people in the world is expected to increase to 2.5 billion by the year 2100.

[illegible]



P. O. BOX 1538
214 FIRST SAVINGS BUILDING
MIDLAND, TEXAS 79701

HOME OFFICE
SUITE 400
700 WILSHIRE BOULEVARD
LOS ANGELES, CALIFORNIA 90017
(213) 629-3143

December 26, 1967

(915) MUTUAL 3-4269
(915) MUTUAL 3-4260

Mr. A. L. Porter, Jr.,
Secretary Director
New Mexico Oil Conservation Commission
Post Office Box 2088
Santa Fe, New Mexico

27 DEC 28 PM 1

Re: Commingling of Production
from Two Federal Leases
in One Storage System
Cato, San Andres Field,
Chaves County, N.M.

Dear Sir:

Bell Petroleum Company has completed a flowing, top allowable, San Andres well on its Conley-Federal Lease consisting of 40 acres (NE 1/4 of the SE 1/4 of Sec. 28, T8S, R30E), (Lease No. 024136-A), in the Cato San Andres Field, Chaves County. Now Bell Petroleum Company respectfully submits an application for administrative approval for commingling of production from above captioned lease with production from its Packer-Federal Lease.** The storage facility* is located on Packer-Federal Lease (E 1/2 of NE 1/4 of Sec. 33, T8S, R30E). (Lease No. 0354427)

Please be advised also that:

1. Production is from a common source of supply, (San Andres Zone) and the commercial value of the commingled production will be unchanged (both wells are producing about 24° gravity oil).
2. The parties owning an interest in the leases and purchaser of the commingled production have been notified, by certified mail of Bell's intention to commingle the production from these leases. (Attached please find copies of letters approving this request.)
3. Production will be metered and sampled separately prior to commingling continuously, utilizing A.O.Smith T-6 temperature compensated meters.
4. The BS&W content will be determined every eight days and the production recorded.

* See attached Plat.

** This lease has two top allowable San Andres wells now producing (Packer-Federal No. 1) and (Packer-Federal No. 2).


Mr. A. L. Porter, Jr.,
NM Oil Conservation Commission

Page No. 2
December 26, 1967

5. Adequate facilities will be installed to permit determination of the producing capacity of each well on each lease at least once each month, in accordance with applicable provisions of current Commission Manual for the Installment and Operation of Com-mingling Facilities.

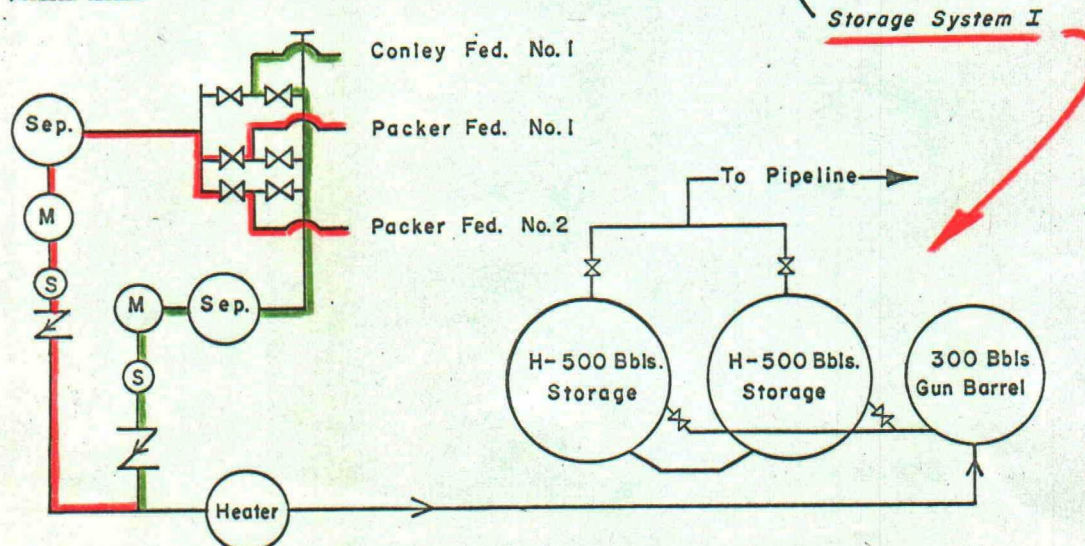
Very truly yours,

BELL PETROLEUM COMPANY

A handwritten signature in cursive script, appearing to read "O. M. Salman".

O. M. Salman,
Vice President

OMS/h
Encls.

[illegible]



UNITED STATES
DEPARTMENT OF THE INTERIOR
GEOLOGICAL SURVEY

Drawer 1857
Roswell, New Mexico 88201

December 20, 1967

Bell Petroleum Company
P. O. Box 1538
Midland, Texas 79701

Attention: Mr. O. M. Salman

Gentlemen:

Your letter of December 5, requests approval to commingle Cato San Andres oil production from Federal leases New Mexico 024136-A and 0354427.

The method of commingling described by your application is hereby approved, provided that the production from each lease is metered separately prior to commingling in the common storage tanks. Any addition or change in this system will require approval by this office. Form 9-361 Lessee's Monthly Report of Sales and Royalty should show all computations used in the calculation of the oil volume for each lease.

You are requested to notify our Roswell District office when the installation is completed so that a field inspection of the system can be made.

Sincerely yours,

JOHN A. ANDERSON
Regional Oil & Gas Supervisor



Bell Petroleum Company

SUITE 400
700 WILSHIRE BOULEVARD
LOS ANGELES, CALIFORNIA 90017

(213) 629-3143

November 17, 1967

Mr. George E. Conley
327 Lombardy Road
Drexel Hill, Penn. 19026

Re: Bell Lease NM-202
USA - NM 024136
NE/4 SE/4 of Sec. 28,
T8S, R30E, Chaves County,
New Mexico - 40 Acres

Dear Mr. Conley:

You have heretofore been contacted by Mr. Bob Corley of Midland, Texas regarding the purchase of this company of your ORR in the subject tract. Please be advised that we plan to drill a well on this tract in the very near future and since we have had no indication from Mr. Corley that you might wish ~~us~~ to sell your ORR to us we are requesting a commingling permit from the New Mexico Conservation Commission for subject tract.

Since you have royalty under this lease, your approval is also required.

Please indicate in the space provided below whether or not you approve of said commingling and upon receipt of a copy of this letter indicating approval by you, proper forms will be filed with the Oil Conservation Commission and a copy will be furnished to you.

Please be advised that all provisions of the Commission's Rules 309A and 309C regarding metering, testing etc of commingled leases will be strictly adhered to.

Yours very truly,
BELL PETROLEUM COMPANY

RJT/h
Enc. 1

R. J. Tingle,
Manager of Land Dept.

Commingling of subject tract (is) approved.

November 20, 1967
Date

George E. Conley