



August 24, 1995

Mr. William J. LeMay, Director
New Mexico Oil Conservation Division
2040 S. Pacheco Street
P.O. Box 6429
Santa Fe, NM 87505

RECEIVED

SEP 5 1995

OIL CONSERVATION DIV.
SANTA FE

Southern

Rockies

Business

Unit

Application for Exception to Rule 303-A- Surface Commingling
Atlantic 1E Well
1030' FNL & 840' FWL, Unit D Section 34-T31N-R10W
Basin Dakota and Blanco Pictured Cliffs Pools
San Juan County, New Mexico

Amoco Production Company hereby requests administrative approval to surface commingle production from the Atlantic 1E well completed in the Basin Dakota and the Pictured Cliffs formations. This well is currently completed as a dual well and if the two horizons were surface commingled they could easily share common facilities. The ownership (WI, RI ORRI) of these pools is identical. Surface commingling will offer an economical method of production using a single train of production equipment to produce from both wells. The actual commercial value of the commingled production will not be less than the sum of the values of the production from each of the common sources of supply.

The Atlantic 1E well (Dakota) is currently producing about 150 MCFD while the Pictured Cliffs is producing about 120 MCFD. Based on this current production we propose to allocate gas production 56% to the Dakota formation and 44% to the Pictured Cliffs formation in this well. This well produces very little condensate and the Pictured Cliffs formation has not historically produced any condensate. Therefore, we propose to allocate any liquid production 100% to the Dakota.

Attached to aid in your review are plats showing the location and acreage dedicated to the well by formation, historical production and recent testing information, and a schematic of the proposed commingling installation. This spacing unit is on a federal lease SF-080917. A copy of the application will be sent to the BLM requesting their consent for the surface commingling.

Sincerely,

Pamela W. Staley

cc: Mike Kutas
Patty Haefle

Frank Chavez, Supervisor
NMOCD District III
1000 Rio Brazos Road
Aztec, NM 87410

Duane Spencer
Bureau of Land Management
1235 La Plata Hwy
Farmington, NM 87401

METHOD OF ALLOCATION

Atlantic 1E Well

Unit D Section 34-T31N-R10W

Basin Dakota and Blanco Pictured Cliffs Pools

	CURRENT PRODUCTION (MCFD)	PERCENT ALLOCATION
PICTURED CLIFFS FORMATION	120	44
DAKOTA FORMATION	150	56
	-----	-----
TOTAL PRODUCTION	270	100

992,051.03 FT. E
107° 53' 48" W

992,046.55 FT. E
107° 53' 48" W

36° 50' 0" N
13,378,651.03 FT. N

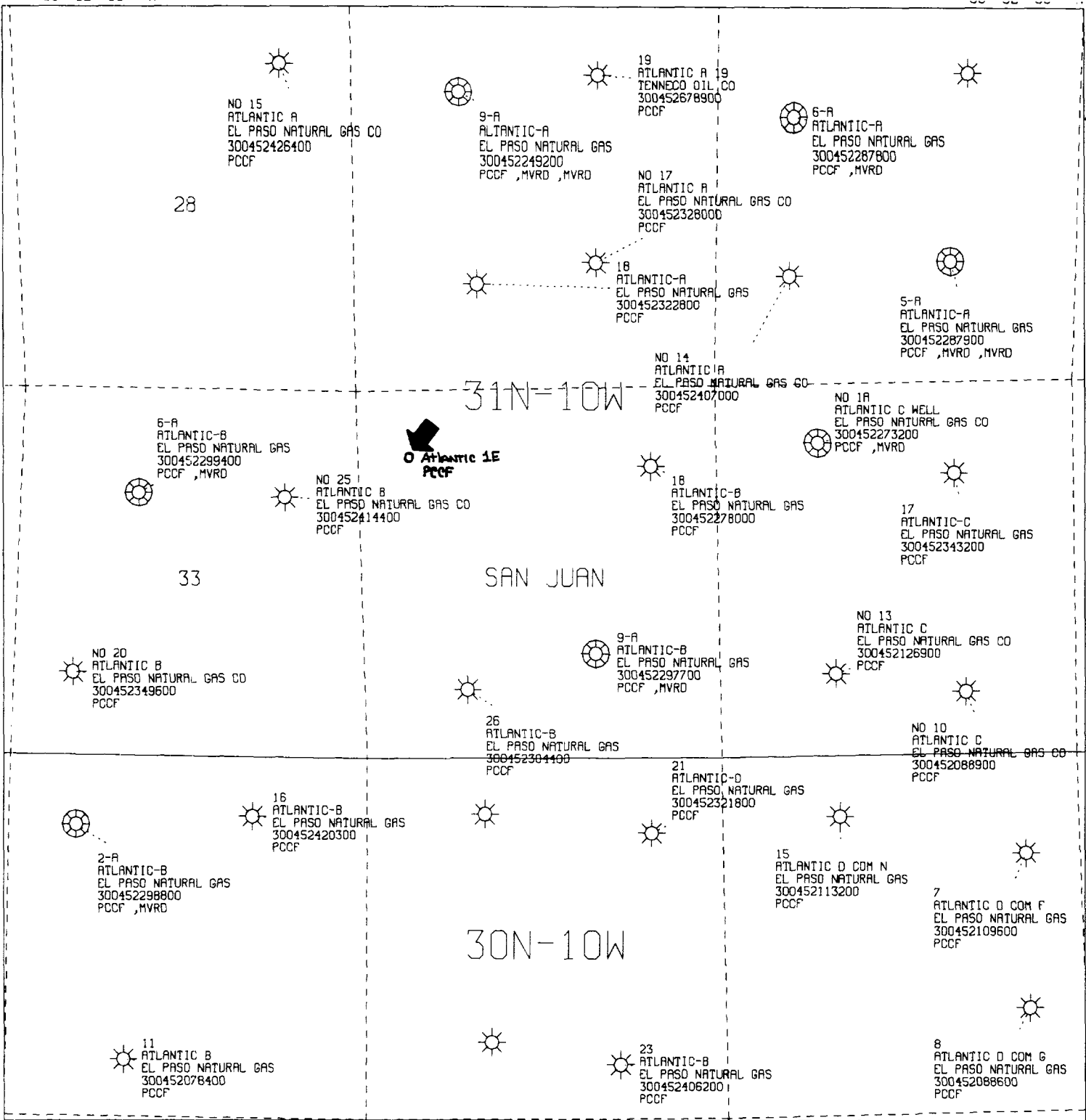
36° 50' 0" N
13,378,651.03 FT. N

All geological and geophysical data, including the interpretation thereof, appearing on this map is the private and confidential property of Amoco Production Company. The publication or reproduction thereof without the written permission of said Company is strictly prohibited.

POLYCONIC CENTRAL MERIDIAN - 107° 52' 10" W LON
SPHEROID - 6

AMOCO PRODUCTION COMPANY
PLAT MAP
Atlantic 1E
Pictured Cliffs

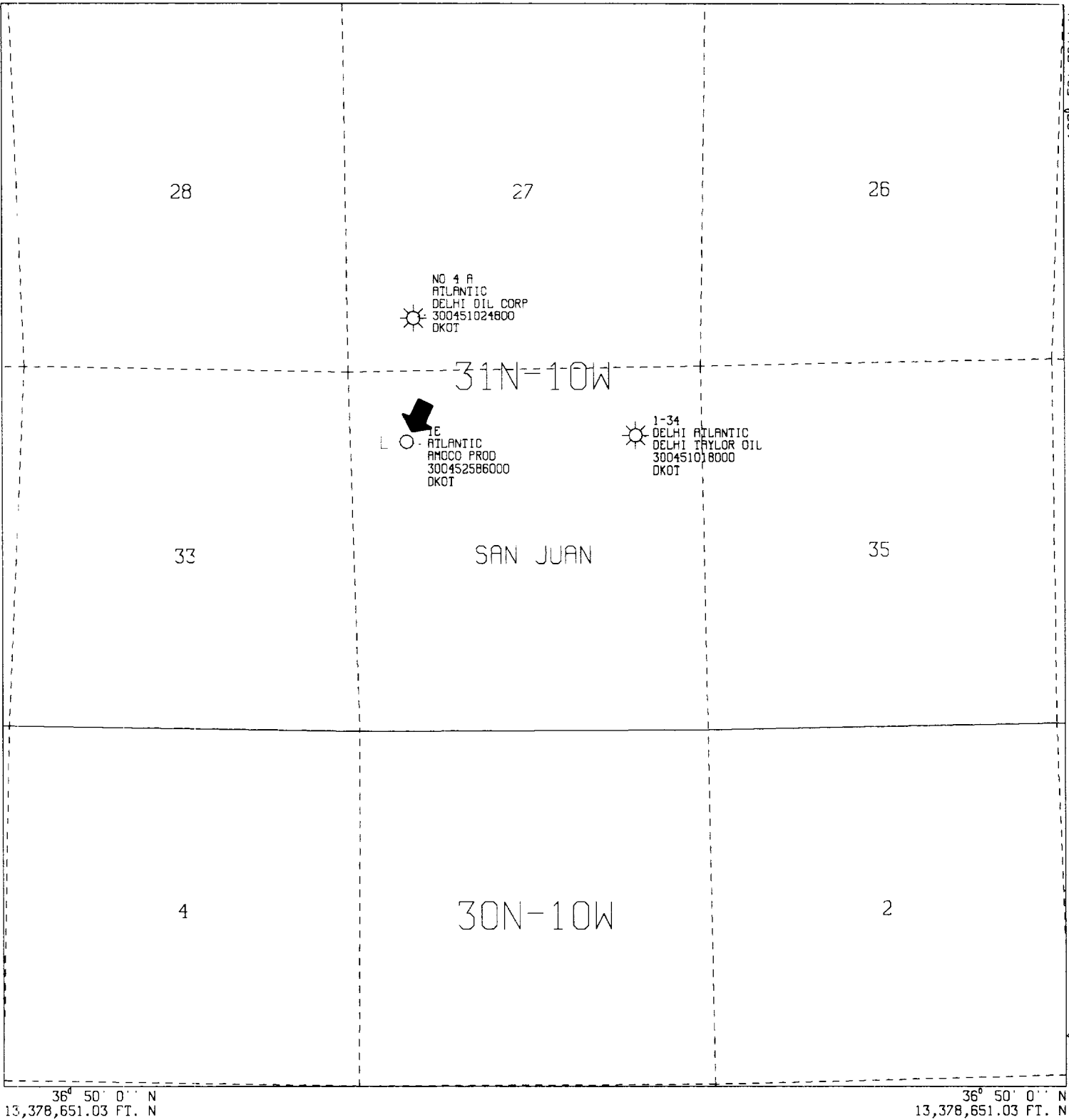
SCALE 1 IN. = 2,000 FT. MAY 19, 1995



10.18.45 FRI 19 MAY, 1995 JOB-P0808202, ISSCO D155PLA 10.0

992,051.03 FT. E
107° 53' 48" W
992,046.55 FT. E
107° 53' 48" W
36° 50' 0" N
13,378,651.03 FT. N

107° 50' 32" W
107° 50' 32" W
36° 50' 0" N
13,378,651.03 FT. N



All geological and geophysical data, including the interpretation thereof, appearing on this map is the private and confidential property of Amoco Production Company. The publication or reproduction thereof without the written permission of said Company is strictly prohibited.

AMOCO PRODUCTION COMPANY
PLAT MAP
Atlantic 1E
Dakota

POLYCONIC CENTRAL MERIDIAN - 107° 52' 10" W LON
SPHEROID - 6

SCALE 1 IN. = 2,000 FT. MAY 19, 1995

All distances must be from the outer boundaries of the Section.

Operator Tenneco Oil Company		Lease Atlantic		Well No. 1E
Unit Letter D	Section 34	Township 31N	Range 10W	County San Juan
Actual Footage Location of Well: 1030 feet from the North line and 840 feet from the West line				
Ground Level Elev: 6213	Producing Formation Dakota	Pool Basin Dakota	Dedicated Acreage: 320 Acres	

1. Outline the acreage dedicated to the subject well by colored pencil or hachure marks on the plat below.

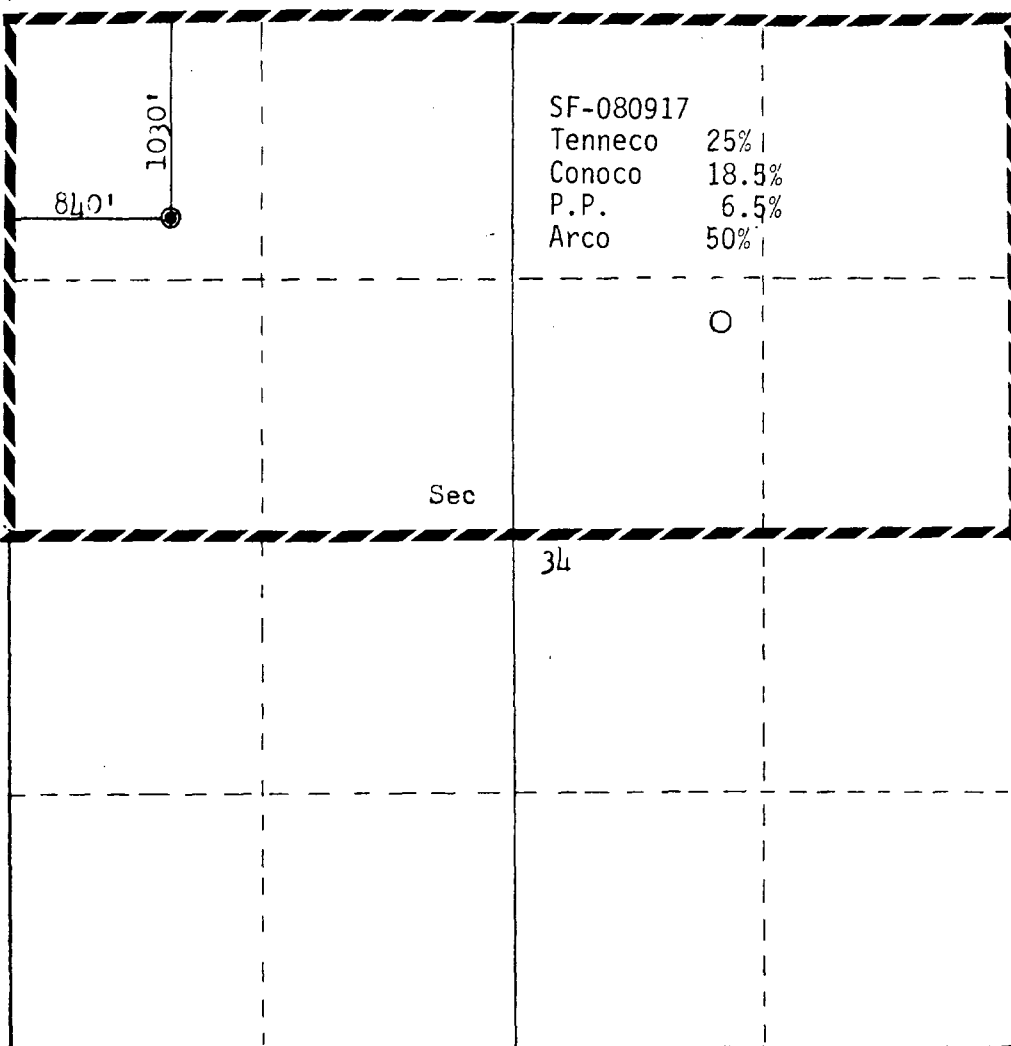
2. If more than one lease is dedicated to the well, outline each and identify the ownership thereof (both as to working interest and royalty).

3. If more than one lease of different ownership is dedicated to the well, have the interests of all owners been consolidated by communitization, unitization, force-pooling, etc?

☐ Yes ☐ No If answer is "yes," type of consolidation _____

If answer is "no," list the owners and tract descriptions which have actually been consolidated. (Use reverse side of this form if necessary.) _____

No allowable will be assigned to the well until all interests have been consolidated (by communitization, unitization, forced-pooling, or otherwise) or until a non-standard unit, eliminating such interests, has been approved by the Commission.



Scale: 1"=1000'

CERTIFICATION

I hereby certify that the information contained herein is true and complete to the best of my knowledge and belief.

Name

Denise Wilson

Position

Production Analyst

Company

Tenneco Oil

Date

October 3, 1983

I hereby certify that the well location shown on this plat was plotted from field notes of actual surveys made by me or under my supervision, and that the same is true and correct to the best of my knowledge and belief.

Date Surveyed

September 12, 1983

Registered Professional Engineer
and Land Surveyor

Fred B. Kerr Jr.

Certificate No.

3950

PO Box 1980, Hobbs, NM 88241-1980

District II

PO Drawer D12, Artesia, NM 88211-0719

District III

1000 Rio Huerfano Rd., Aztec, NM 87410

District IV

PO Box 2088, Santa Fe, NM 87504-2088

State of New Mexico
Energy, Minerals & Natural Resources Department

OIL CONSERVATION DIVISION

PO Box 2088
Santa Fe, NM 87504-2088

Form C-102
Revised February 21, 1994
Instructions on back
Submit to Appropriate District Office
State Lease - 4 Copies
Fee Lease - 3 Copies

☐ AMENDED REPORT

WELL LOCATION AND ACREAGE DEDICATION PLAT

APN Number 30-045-25860		Pool Code 72359	Pool Name Blanco Pictured Cliffs
Property Code 000276	Property Name Atlantic		Well Number 1E
OGRID No. 000778	Operator Name Amoco Production Company		Elevation 6225' KB

10 Surface Location

UL or lot no.	Section	Township	Range	Lot Idn	Feet from the	North/South line	Feet from the	East/West line	County
D	34	31N	10W	D	1030	North	840	West	San Juan

11 Bottom Hole Location If Different From Surface

UL or lot no.	Section	Township	Range	Lot Idn	Feet from the	North/South line	Feet from the	East/West line	County

Dedicated Acres 158.36	Joint or Infill	Consolidation Code	Order No.
---------------------------	-----------------	--------------------	-----------

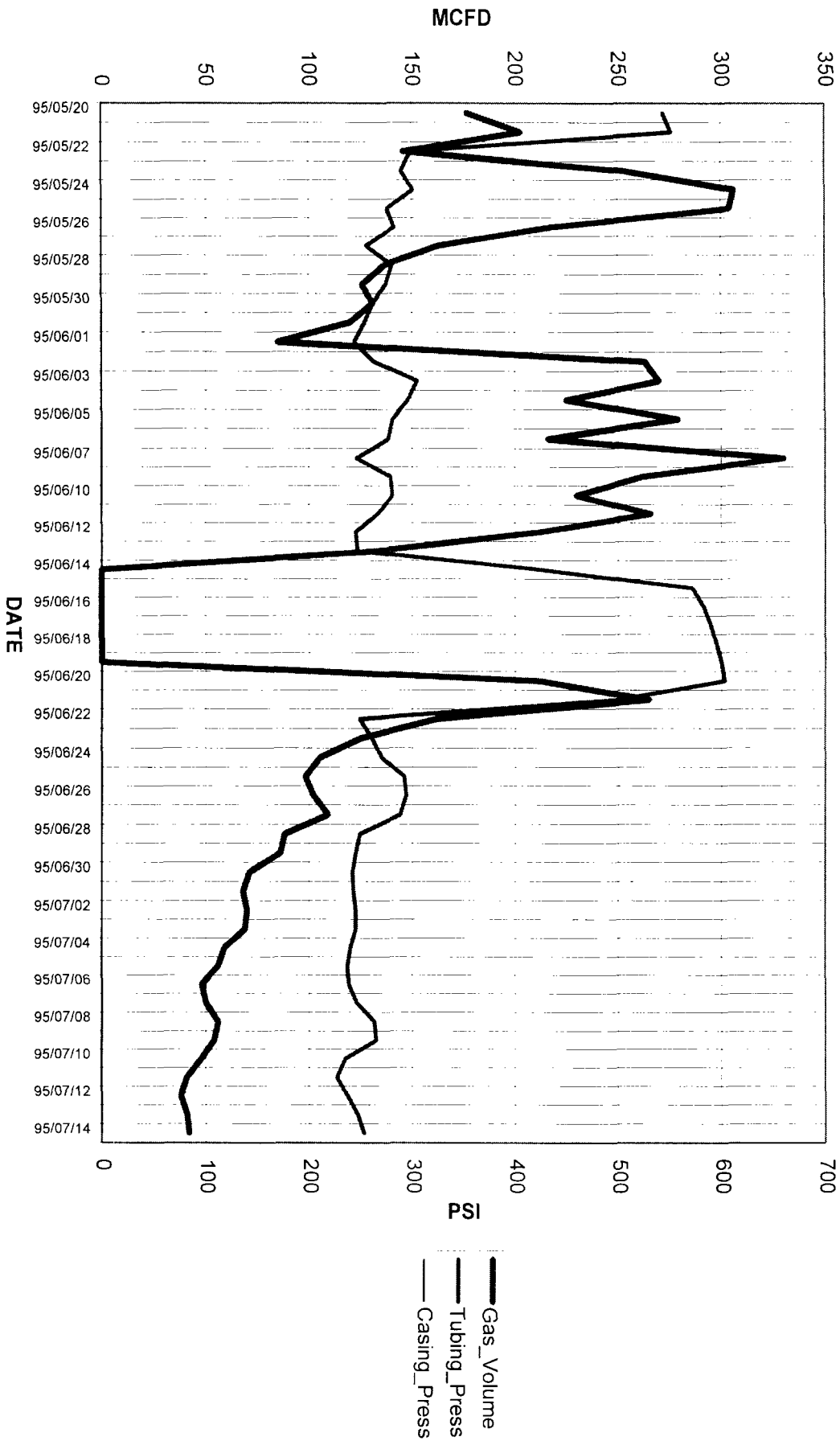
NO ALLOWABLE WILL BE ASSIGNED TO THIS COMPLETION UNTIL ALL INTERESTS HAVE BEEN CONSOLIDATED
OR A NON-STANDARD UNIT HAS BEEN APPROVED BY THE DIVISION

<div>16</div> <div>1030'</div> <div>840'</div>					<div>17 OPERATOR CERTIFICATION</div> <p>I hereby certify that the information contained herein is true and complete to the best of my knowledge and belief</p> <p><u>Patty Haeefe</u> Signature Patty Haeefe Printed Name Staff Assistant Title <u>March 27, 1995</u> Date</p>
					<div>18 SURVEYOR CERTIFICATION</div> <p>I hereby certify that the well location shown on this plat was plotted from field notes of actual surveys made by me or under my supervision, and that the same is true and correct to the best of my belief.</p> <p><u>September 12, 1983</u> Date of Survey Signature and Seal of Professional Surveyor: On File <u>3950</u> Certificate Number</p>

Chart1

Well: ATLANTIC 001E-DK

(97984701)



Engr: zr06

ATLANTIC 1E

Operator- AMOCO PRODUCTION CO

300452586000DK

D343110-001EDK

APC_WI - 0.25000000

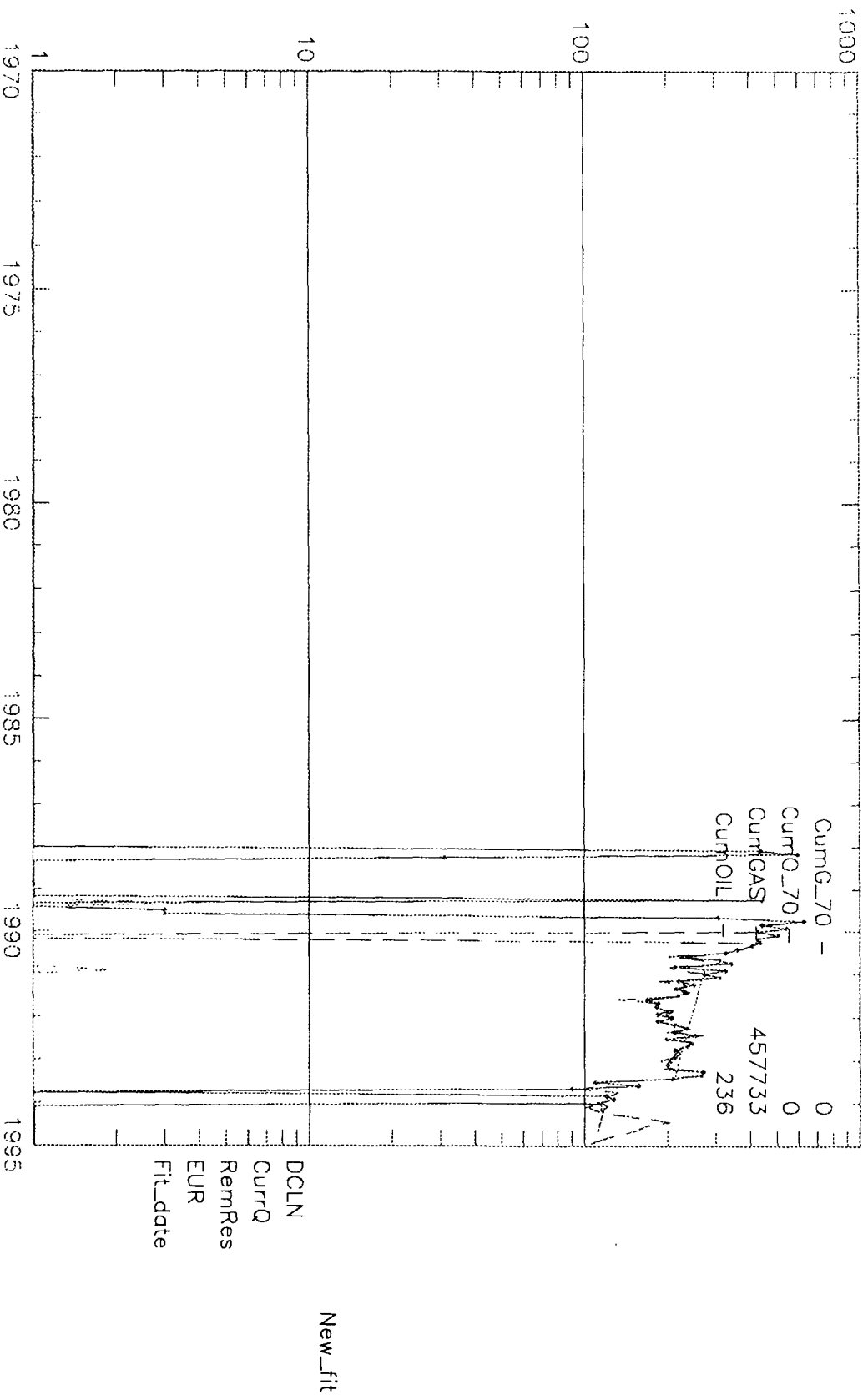
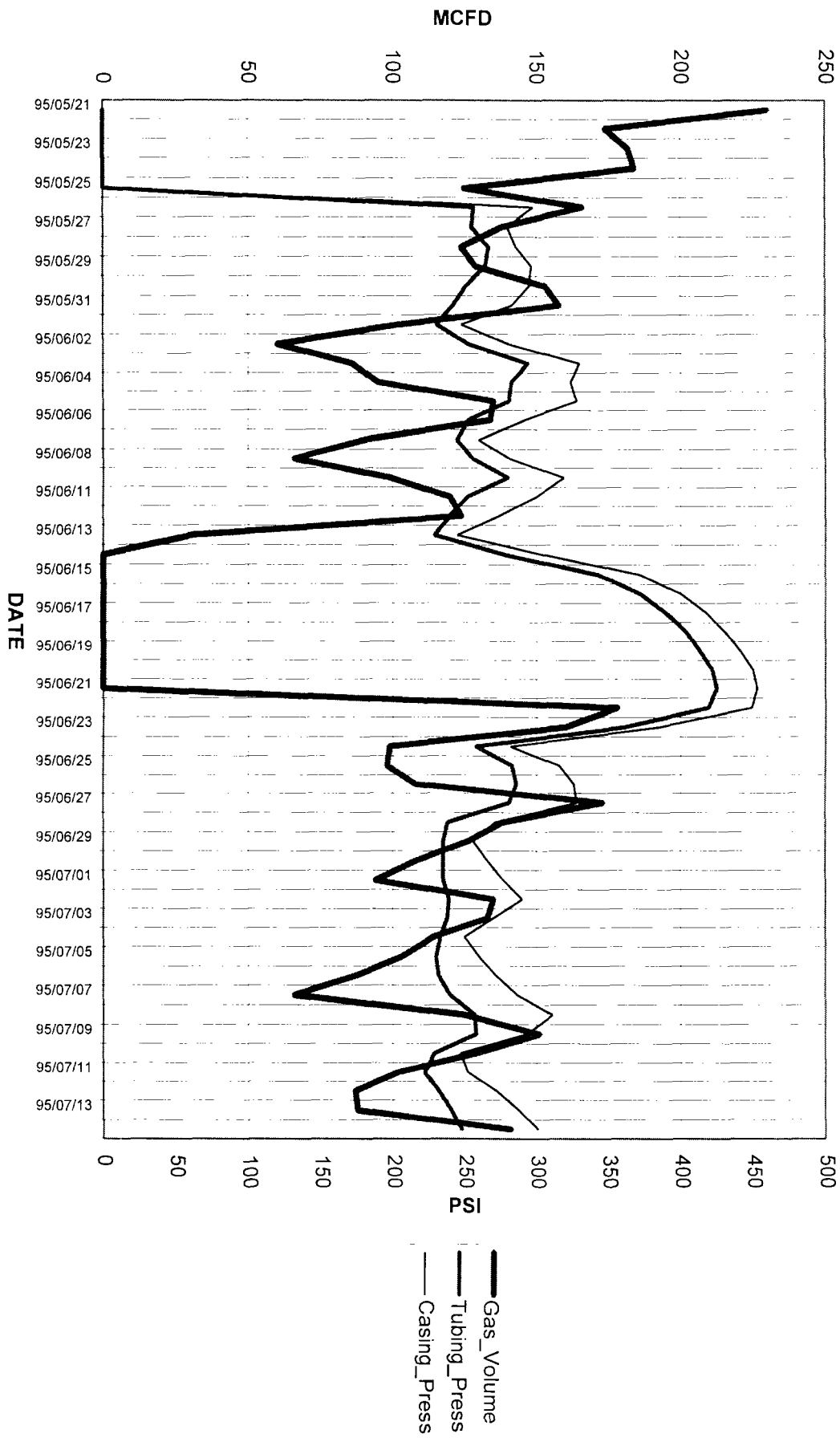


Chart1

Well: ATLANTIC 001E-PC (97984702)

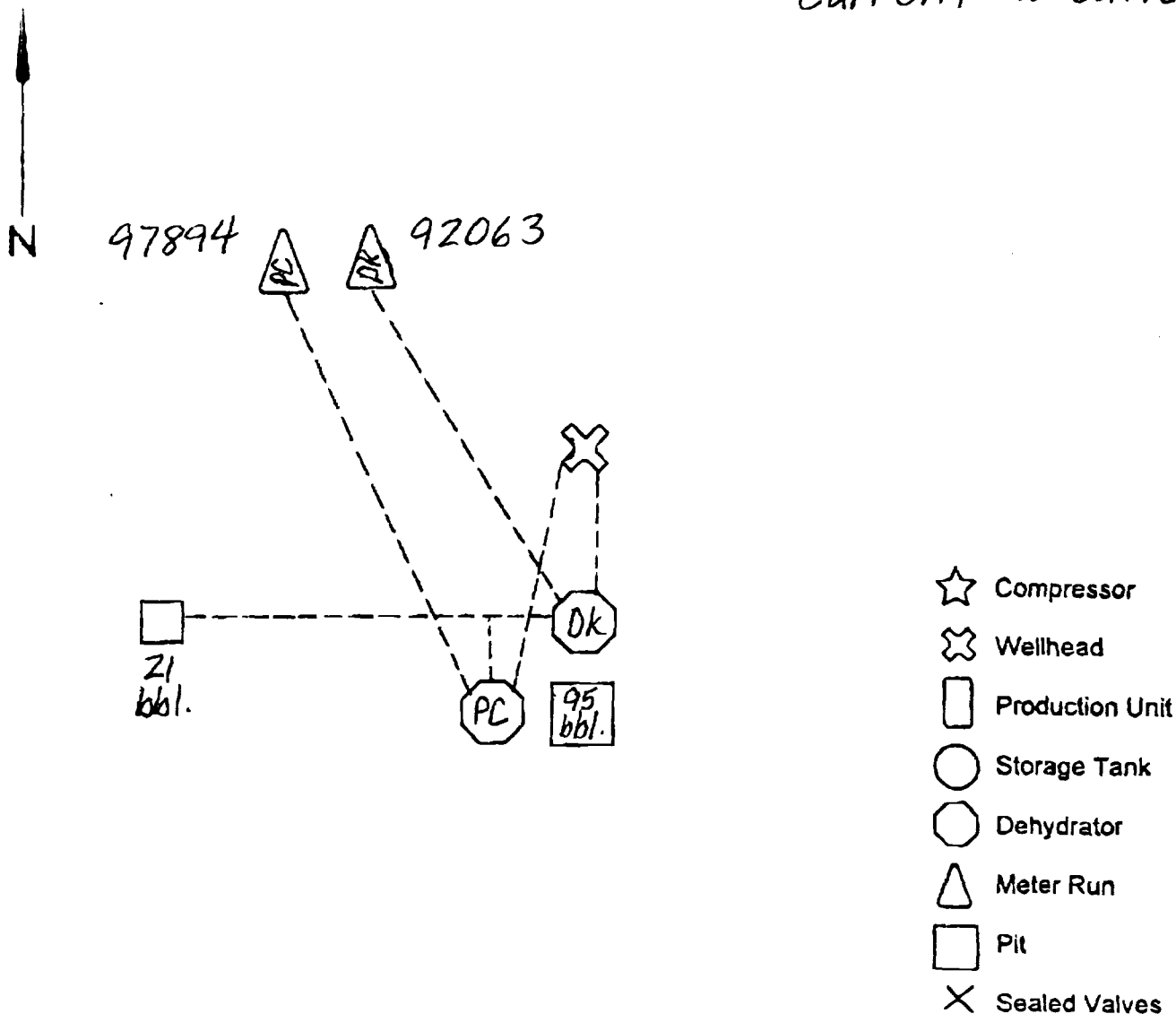


AMOCO PRODUCTION COMPANY
SAN JUAN OPERATIONS CENTER
FARMINGTON, NMONSHORE FEDERAL AND INDIAN
SITE FACILITY DIAGRAMLEASE NAME & WELL NUMBER Atlantic 1E (PC & DK)LEASE NUMBER SF-D80917

COMMUNITIZATION NUMBER _____

LOCATION Unit D SEC 34 T 31-N R 10-WThis diagram subject to site security plan yes

Sealed valves are normally closed during production phase. Drain line valve to pit open to draw off water and load line valve open to sell condensate.

Current Location

ONSHORE FEDERAL AND INDIAN SITE FACILITY DIAGRAM

This diagram subject to site security plan _____

Proposed Location

