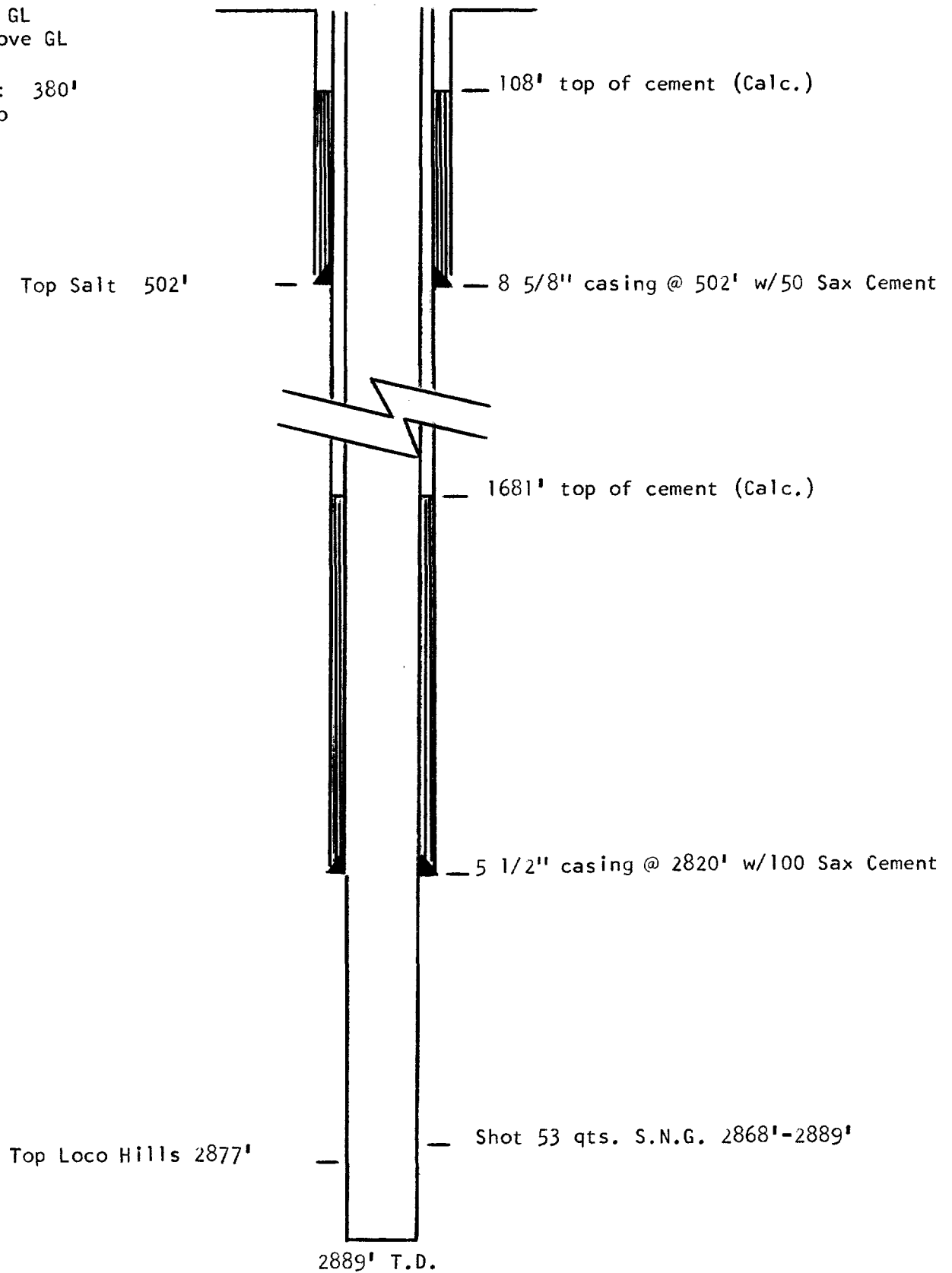


DIAGRAMMATIC SKETCH

SCHEURICH "B" NO. 4

2525' FSL 1435' FWL SEC 32-T17S-R30E
Completed 5-13-41

Elevation: 3581' GL
Zero: 1' above GL
Top Salt: 502'
Brackish Wtr Zone: 380'
Hole reduced 8" to
6 1/2" @: 1980'



Attachment to Newmont Oil Company requests
for injection well - Scheurich State 4B

NEW MEXICO OIL CONSERVATION COMMISSION
GAS-OIL RATIO TESTS

C-116
Revised 1-1-65

Operator Newmont Oil Company		Pool Loco Hills		County Eddy County	
Address 303 First National Bank Building, Artesia, New Mexico				TEST - (X) <input type="checkbox"/> Scheduled <input type="checkbox"/> Completion <input type="checkbox"/> Special <input type="checkbox"/>	
LEASE NAME Scheurich State		WELL NO. 5B	LOCATION U S T R E 32 17 30	DATE OF TEST 9-12-60	TYPE OF TEST - (X) <input type="checkbox"/> Scheduled <input type="checkbox"/> Completion <input type="checkbox"/> Special <input type="checkbox"/>
				CHOKE SIZE 1-14-61	T.B.G. PRESS. P
				DAILY ALLOW-ABLE 24	LENGTH OF TEST HOURS 24
				WATER BBLs. 0	PROD. DURING TEST GRAV. OIL BBLs. 38.1 10
				GAS M.C.F. No test	GAS - OIL RATIO CU.FT./BBL. " "
				1-12-61	P
				6-12-61	P
				10-25-62	P
				1-30-63	P
				3-16-63	P
				7-20-63	P
				1-27-64	P
				6-12-64	P
				1-19-65	P
				6-14-65	P
				10-26-65	P

No well will be assigned an allowable greater than the amount of oil produced on the official test.

During gas-oil ratio test, each well shall be produced at a rate not exceeding the top unit allowable for the pool in which well is located by more than 25 percent. Operator is encouraged to take advantage of this 25 percent tolerance in order that well can be assigned increased allowables when authorized by the Commission.

Gas volumes must be reported in MCF measured at a pressure base of 15.025 psia and a temperature of 60° F. Specific gravity base will be 0.60.

Report casing pressure in lieu of tubing pressure for any well producing through casing.

Mail original and one copy of this report to the district office of the New Mexico Oil Conservation Commission in accordance with Rule 301 and appropriate pool rules.

I hereby certify that the above information is true and complete to the best of my knowledge and belief.

(Signature)
Division Superintendent

(Title)
November 2, 1965

(Date)

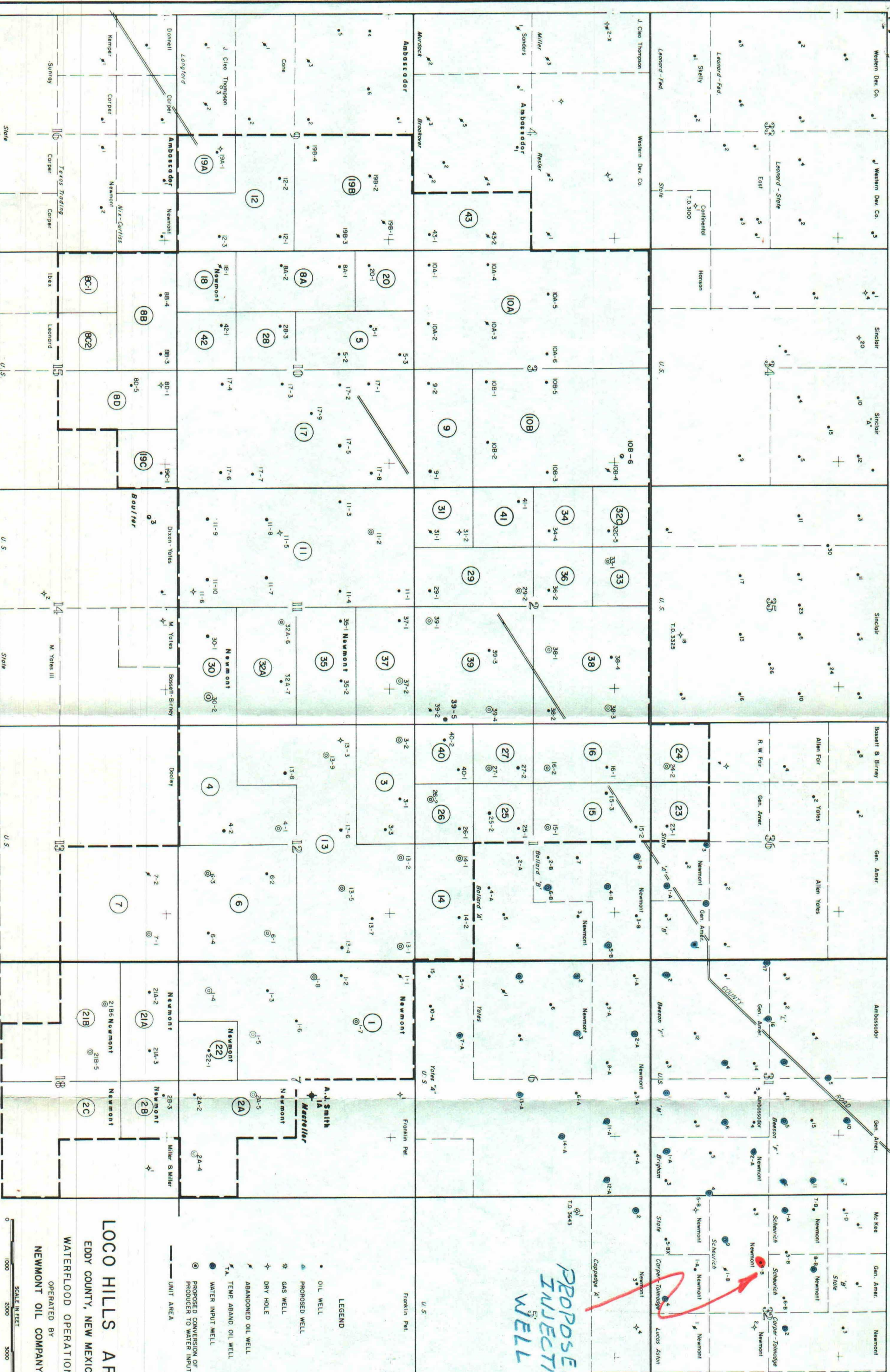
Attachment to Newmont Oil Company
request for Injection Well - Scheurich
State 4B

2516

I hereby certify that the above information is true and complete to the best of my knowledge and belief.

R 29 E

R 30 E



PROPOSED
INJECTION
WELL

LEGEND

- OIL WELL
- PROPOSED WELL
- * GAS WELL
- ✦ DRY HOLE
- ✦ ABANDONED OIL WELL
- ✦ TEMP. ABAND. OIL WELL
- WATER INPUT WELL
- PROPOSED CONVERSION OF PRODUCER TO WATER INPUT
- UNIT AREA

LOCO HILLS AREA

EDDY COUNTY, NEW MEXICO

WATERFLOOD OPERATIONS

OPERATED BY

NEWMONT OIL COMPANY



DATE

GOVERNOR
JACK M. CAMPBELL
CHAIRMAN

State of New Mexico
Oil Conservation Commission



LAND COMMISSIONER
GUYTON B. HAYS
MEMBER

P. O. DRAWER DD
ARTESIA

STATE GEOLOGIST
A. L. PORTER, JR.
SECRETARY - DIRECTOR

November 9, 1965

N. M. Oil Conservation Commission
P. O. Box 2088
Santa Fe, New Mexico

Attention: J. E. Kapteina

Re: Applications for WFX Orders

Dear Jim:

Referring to Newmont Oil Company's application of November 2, 1965, and S. P. Yates Drilling Company's application of November 1, 1965, for expansions of waterfloods authorized by Commission Orders R-1267 and R-2196 respectively, I see no reason why either of these applications should not be approved.

Very truly yours,

OIL CONSERVATION COMMISSION

Dick

A. L. Stamets
Geologist

RLS/bh



STATE OF NEW MEXICO
STATE ENGINEER OFFICE
SANTA FE

S. E. REYNOLDS
STATE ENGINEER

November 15, 1965

ADDRESS CORRESPONDENCE TO:
STATE CAPITOL
SANTA FE, NEW MEXICO 87501

Mr. A. L. Porter, Jr.
Secretary-Director
Oil Conservation Commission
Santa Fe, N. M.

Dear Mr. Porter:

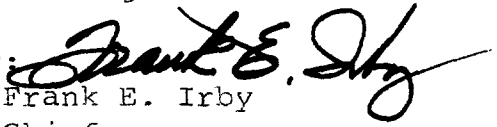
Reference is made to the application of Newmont Oil Company which seeks administrative approval to convert their Scheurich State No. 4B to water injection in the Loco Hills pool.

This office offers no objection to the granting of this application provided the casing is successfully tested to 300 psi. greater than the maximum proposed injection pressure, or injection is down internally coated tubing and under a packer set at 1981' or lower.

FEI/ma
ccNewmont Oil Co.
F. H. Hennighausen

Yours truly,

S. E. Reynolds
State Engineer

By: 
Frank E. Irby
Chief
Water Rights Div.