

WFX-342  
June 11  
TENNECO OIL COMPANY

A Major Component of Tenneco Inc.

SUITE 1200 • LINCOLN TOWER BUILDING • DENVER, COLORADO 80203



June 23, 1970

*Tenneco South Upper Hospah Unit No. 1*

New Mexico Oil Conservation Commission  
P. O. Box 2088  
Santa Fe, New Mexico 87501

Re: Proposed Water Injection Well  
South Hospah Unit.  
Order No. R-3325

Gentlemen:

Tenneco Oil Company hereby requests administrative approval to convert Whigham No. 1 from a producing well to a water injection well. It is requested that approval to this request be granted in conjunction with approval of the South Hospah Unit Expansion. Upon expansion, the Whigham No. 1 will be referred to as South Hospah Unit No. 43.

Conversion of this well will sweep oil to well Nos. 15 and 22. Both of these wells have responded to previous injection. The area to be affected by the conversion is not currently under flood, and the proposed injection will constitute a new pattern and result in recovery of additional oil from the reservoir.

We propose to convert this well as shown in the attached diagrammatic sketch. Approximately 200 BPD of produced Lower Hospah water will be injected into the Upper Hospah at a depth of 1690 to 1740 feet.

As required by Rule 701-B, we have enclosed a plat of the area, a log of the proposed injection well and Form C-116 showing production tests of affected wells. There are no other operators directly offsetting the desired injection well.

Thank you for your consideration in this matter.

Yours very truly,

TENNECO OIL COMPANY

*C. W. Nance*

C. W. Nance

District Production Superintendent

JML/jel

cc: E. C. Arnold - Aztec

NEW MEXICO OIL CONSERVATION COMMISSION  
GAS-OIL RATIO TESTS

2-11-65  
Revised 1-1-65

Operator <b>TECATECO OIL COMPANY</b>		Pool <b>"A"</b>		County <b>Mc KINLEY</b>	
Address <b>1200 Lincoln Tower Building, Denver, Colorado 80203</b>		SOUTH HOSPAH UPPER SAND		TEST - (X)	
LEASE NAME <b>HOSPAH "A"</b>		WELL NO. <b>4</b>	LOCATION <b>L 12 17N 9W</b>	DATE OF TEST <b>7-18</b>	TYPE OF TEST - (X) <b>Pumping</b>
		U	S	T	R
		DAILY ALLOW-ABLE		LENGTH OF TEST HOURS	PROD. DURING TEST
		24		5	- 4 -
		GAS - OIL RATIO CU. FT./BBL.		TSTM	

No well will be assigned an allowable greater than the amount of oil produced on the official test.

During gas-oil ratio test, each well shall be produced at a rate not exceeding the top unit allowable for the pool in which well is located by more than 25 percent. Operator is encouraged to take advantage of this 25 percent tolerance in order that well can be assigned increased allowables when authorized by the Commission.

Gas volumes must be reported in MCF measured at a pressure base of 15.025 psia and a temperature of 60° F. Specific gravity base will be 0.60.

Report casing pressure in lieu of tubing pressure for any well producing through casing.

Mail original and one copy of this report to the district office of the New Mexico Oil Conservation Commission in accordance with Rule 301 and appropriate pool rules.

I hereby certify that the above information is true and complete to the best of my knowledge and belief.

*D. D. C. C.*  
(Signature)

Production Clerk  
(Title)

8/20/63

(Date)

C-116  
Revised 1-1-65

No well will be assigned an allowable greater than the amount of oil produced on the official test.

During gas-oil ratio test, each well shall be produced at a rate not exceeding the top unit allowable for the pool in which well is located by more than 25 percent. Operator is encouraged to take advantage of this 25 percent tolerance in order that well can be assigned increased allowables when authorized by the Commission.

Gas volumes must be reported in MCF measured at a pressure base of 15.025 psia and a temperature of 60° F. Specific gravity base will be 0.60.

Report casing pressure in lieu of tubing pressure for any well producing through casing.

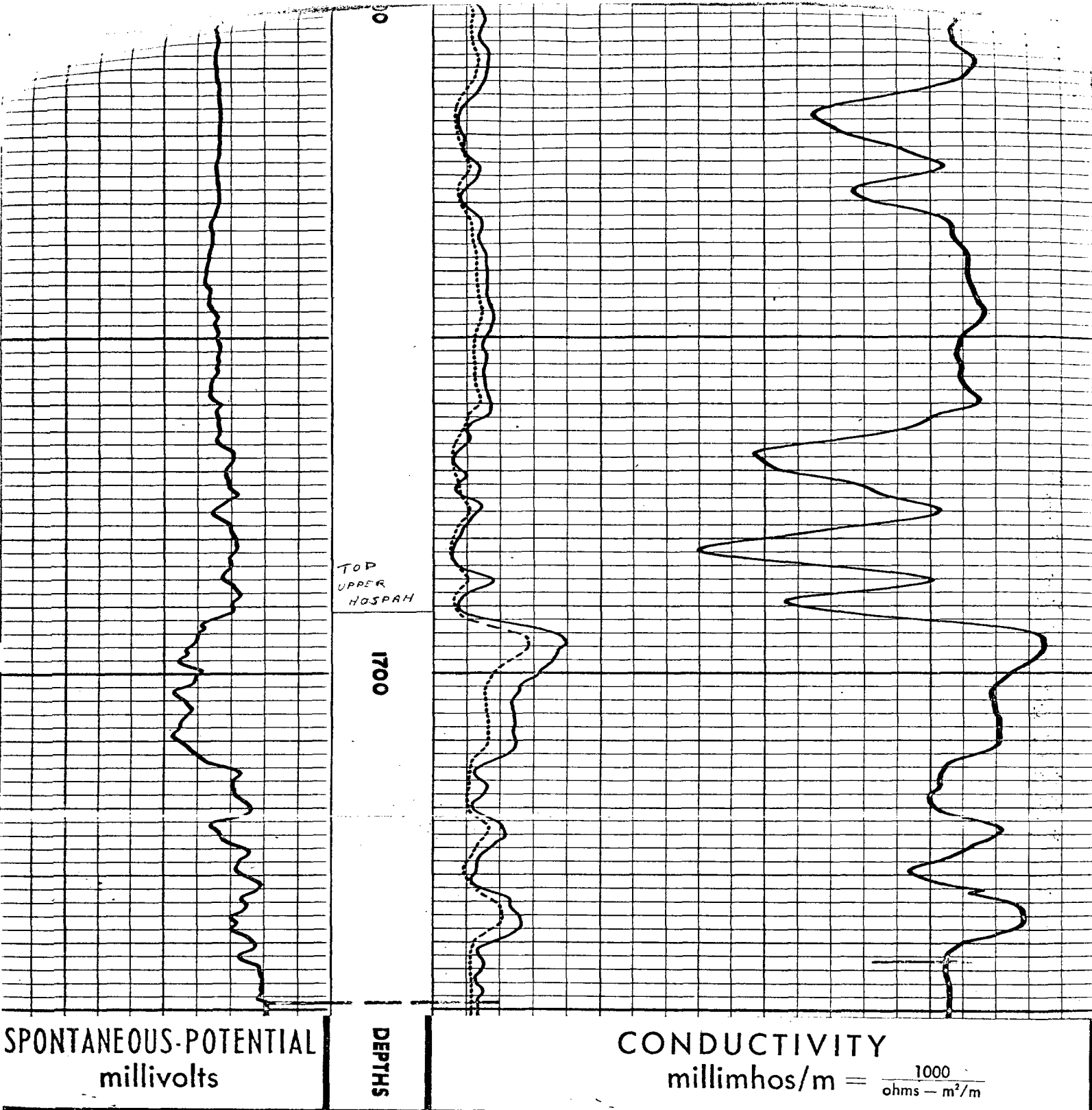
Mail original and one copy of this report to the district office of the New Mexico Oil Conservation Commission in accordance with Rule 301 and appropriate pool rules.

I hereby certify that the above information is true and complete to the best of my knowledge and belief.

(Signature)

Production Clerk	(Title)
1-30-69	

**(T)aire**



COMPANY CTV OIL & GAS COMPANY  
WELL WHIGHAM #1  
FIELD HOSPAH  
COUNTY MC KINLEY STATE NEW MEXICO

SWSC FR 1749'  
SWSC TD 1750'  
DRLR TD 1745'  
Elev: KB NA  
DF NA  
GL 7108'

TENNECO OIL COMPANY  
 PROPOSED WATER INJECTION WELL  
 SOUTH HOSPAN NO. 43  
 (WHIGHAM NO. 1)  
 SEC. 11, T17N, R9W  
 MCKINLEY CO., NEW MEXICO

