

ANADARKO PRODUCTION COMPANY

A Panhandle Eastern Pipe Line Company Subsidiary

Two Greenway Plaza East, Suite 410
Houston, Texas 77046
(713) 626-7610

May 7, 1976

437

Mr. Joe D. Ramey, Secretary-Director
New Mexico Oil Conservation Commission
P.O. Box 2088
Sante Fe, New Mexico 87501

Dear Mr. Ramey:

Anadarko Production Company requests Administrative approval for the drilling of two water injection wells at locations differing from those previously approved. The wells will be in the Ballard Grayburg-Jackson Unit Waterflood Project, approved March 16, 1973 by order No. R-4493. This unit is in T-18-S, R-29-E, Eddy County, New Mexico.

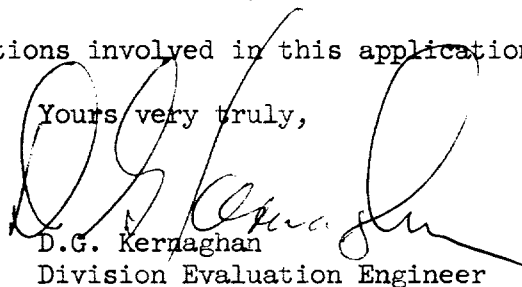
We wish to drill well No. 6-3 at a location 1980' FSL and 2080' FEL of Section 6. This well was originally approved as well 6-18 at a location 100' east of this present request. This change is necessary since the original location falls on a water line belonging to the City of Carlsbad.

Permission to drill well No. 20-6 is requested at a location 760' FNL and 560' FWL of Section 17. This well was originally approved as Well 20-12 at a location 660' FN&WL of Section 17. The change is necessary since the original location falls on a black top highway.

Plats showing the well locations are attached as well as schematic diagrams of the proposed completions. We prefer to set the packers approximately 100' above the top perforations instead of 20-30 feet as originally proposed in order to gain an interval in which an accurate "base line" temperature gradient can be observed when these wells are surveyed at a later date.

Please advise if there are any questions involved in this application.

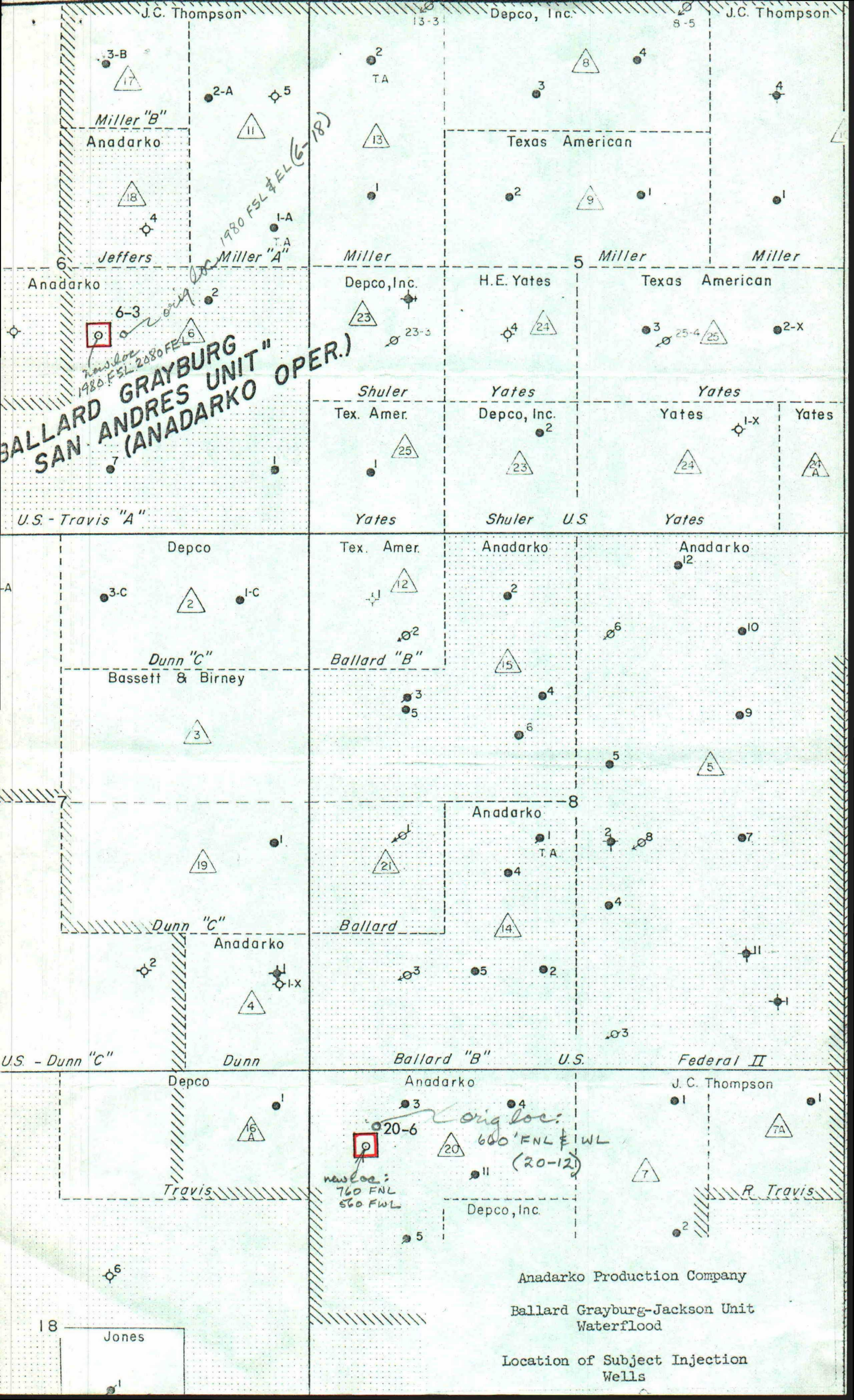
Yours very truly,


D.G. Kernaghan
Division Evaluation Engineer

DGK/crs

Attachments

~~20-6 is a water injection well and 6-3 is a water injection well~~



NEW MEXICO OIL CONSERVATION COMMISSION
WELL LOCATION AND ACREAGE DEDICATION PLAT

Form C-109
Supersedes C-220
Effective 1-1-65

All distances must be from the outer boundaries of the Section

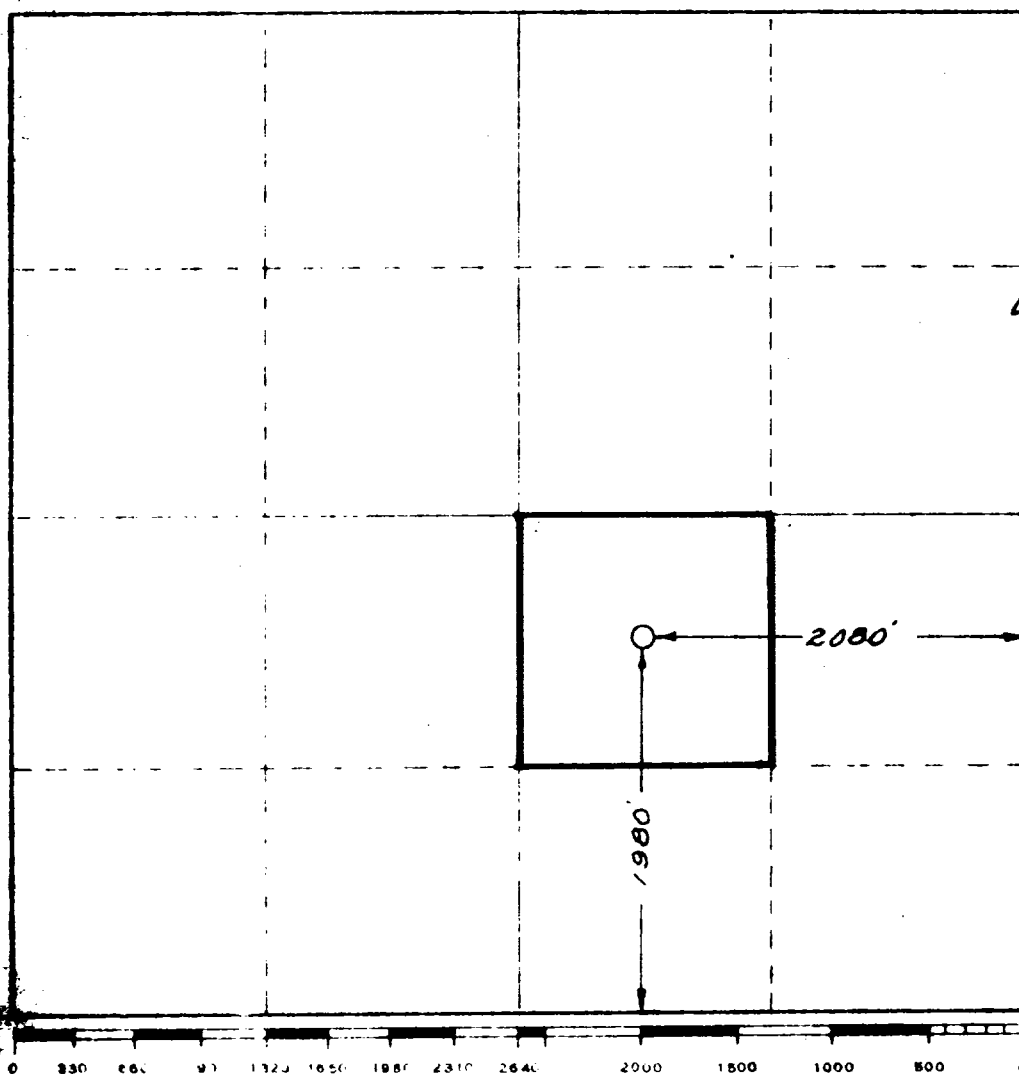
ANADARKO PRODUCTION COMPANY		Lease: BALLARD UNIT		Well No. 6-3
Section 6	Range 18 South	Section 29 East	County Eddy	
Year 1980	Section South	Section 2080	Section East	
Acres 3616.2	Grayburg	Loco Hills Queen Grayburg San Andres	Dedicated Acreage: 40 Acres	

1. Outline the acreage dedicated to the subject well by colored pencil or hatchure marks on the plat below.
2. If more than one lease is dedicated to the well, outline each and identify the ownership thereof (both as to working interest and royalty).
3. If more than one lease of different ownership is dedicated to the well, have the interests of all owners been consolidated by communitization, unitization, force-pooling, etc?

☒ Yes ☐ No If answer is "yes," type of consolidation Unitization

If answer is "no," list the owners and tract descriptions which have actually been consolidated. (Use reverse side of this form if necessary.)

No allowable will be assigned to the well until all interests have been consolidated (by communitization, unitization, force-pooling, or otherwise) or until a non-standard unit, eliminating such interests, has been approved by the Commission.



CERTIFICATION

I hereby certify that the information contained herein is true and complete to the best of my knowledge and belief.

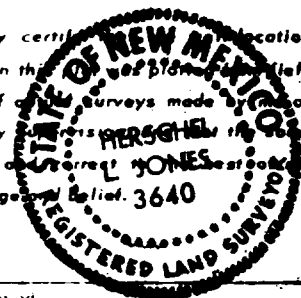
[Signature]
Name

Position
Area Supervisor

Company
Anadarko Production Co.

Date
March 30, 1976

I hereby certify that the location shown on this plat is the location shown on the original field notes of the surveys made under my supervision and is true and correct to the best of my knowledge and belief. 3640



Date Surveyed

Feb. 16, 1976

Registered Professional Engineer and/or Land Surveyor

[Signature]
Certificate No. 3640

NEW MEXICO OIL CONSERVATION COMMISSION
WELL LOCATION AND ACREAGE DEDICATION PLAT

Form C-102
Supersedes C-128
Effective 1-1-65

All distances must be from the outer boundaries of the Section

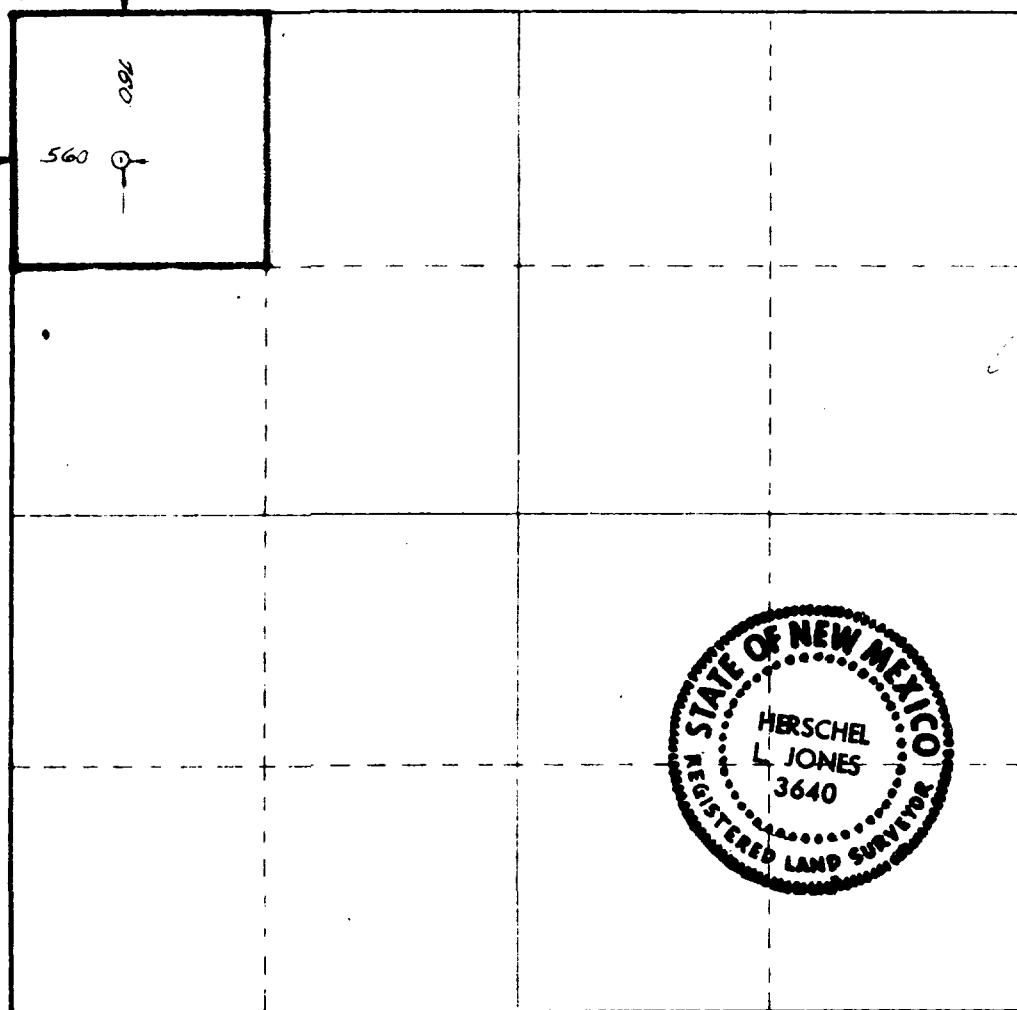
Operator Anadarko Production Company		Lease Ballard Unit		Well No. 20-6
Unit Letter D	Section 17	Township 18 South	Range 29 E.	County Eddy
Actual Footage Location of Well:				
760	feet from the North	line and	560	feet from the West
Ground Level Elev. 3509	Producing Formation Grayburg	Foot Loco Hills Queen	Lease Acreage 40	Acres

1. Outline the acreage dedicated to the subject well by colored pencil or hachure marks on the plat below.
2. If more than one lease is dedicated to the well, outline each and identify the ownership thereof (both as to working interest and royalty).
3. If more than one lease of different ownership is dedicated to the well, have the interests of all owners been consolidated by communitization, unitization, force-pooling, etc?

☒ Yes ☐ No If answer is "yes," type of consolidation **Unitization**

If answer is "no," list the owners and tract descriptions which have actually been consolidated. (Use reverse side of this form if necessary.)

No allowable will be assigned to the well until all interests have been consolidated (by communitization, unitization, forced-pooling, or otherwise) or until a non-standard unit, eliminating such interests, has been approved by the Commission.



CERTIFICATION

I hereby certify that the information contained herein is true and complete to the best of my knowledge and belief.

[Signature]
Area Supervisor

Anadarko Production Co.

Date
May 4, 1976

I hereby certify that the well location shown on this plat was plotted from field notes of actual surveys made by me or under my supervision, and that the same is true and correct to the best of my knowledge and belief.

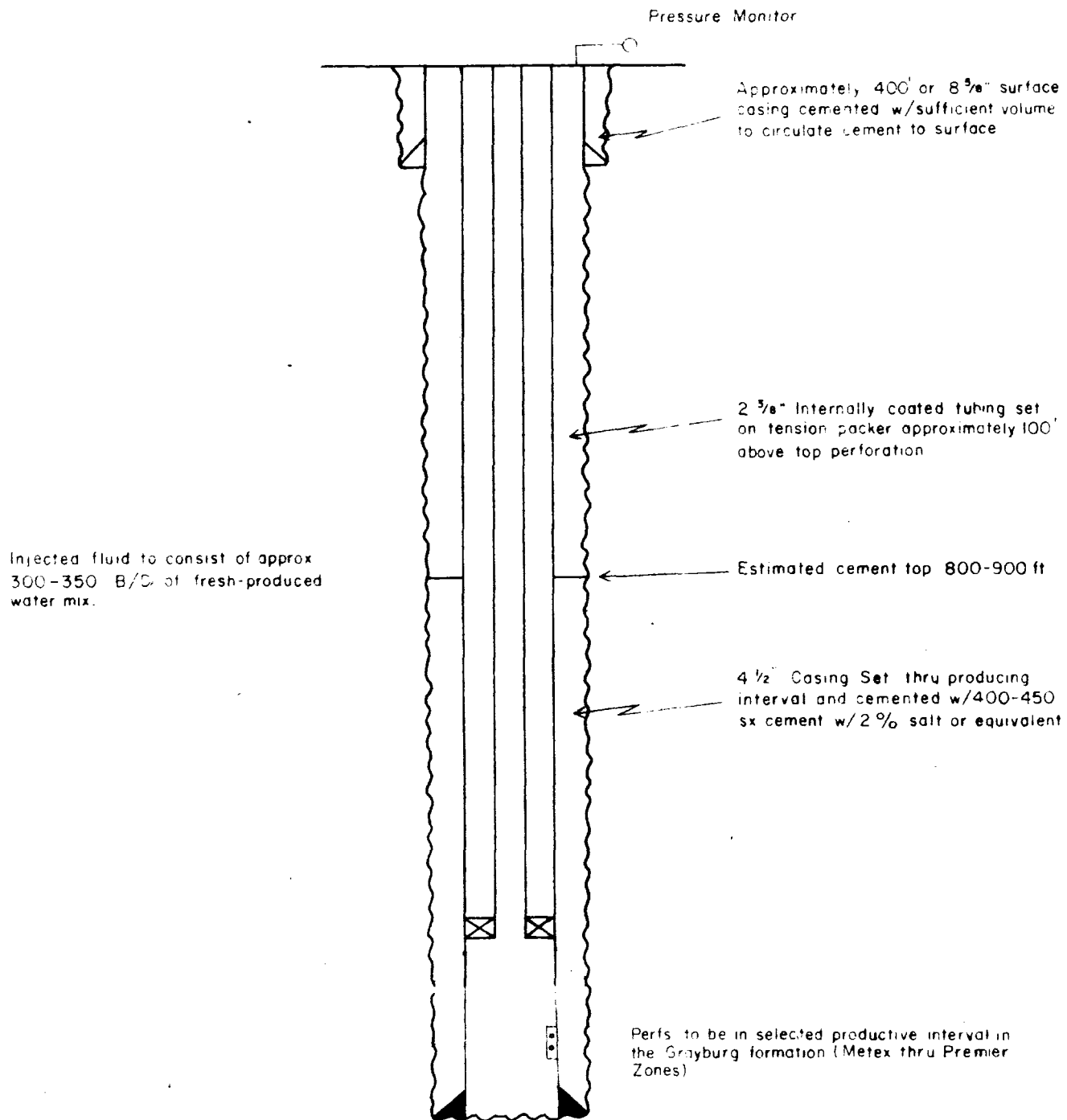
Date Surveyed
May 3, 1976

Registered Professional Engineer
in the State of New Mexico

[Signature]
Certificate No. **3640**

0 330 660 990 1320 1650 1980 2310 2640 2970 3300 3630 3960 4290 4620 4950 5280 5610 5940 6270 6600

TYPICAL COMPLETION
WELLS 6-3,20-6



ANADARKO PRODUCTION COMPANY

BALLARD GRAYBURG-JACKSON UNIT
EDDY COUNTY, NEW MEXICO

DIAGRAMMATIC SKETCH
OF
PROPOSED INJECTION WELL COMPLETION