



BTA OIL PRODUCERS

PARTNERS
CARLTON BEAL
CARLTON BEAL, JR.
BARRY BEAL
SPENCER BEAL
KELLY BEAL

104 SOUTH PECOS
MIDLAND, TEXAS 79701-9988
AC 915-682-3753

June 20, 1986

Re: Application for Off-Lease Storage
8601 JV-P Buckeye
Lea County, New Mexico

STATE OF NEW MEXICO
Energy and Minerals Department
Oil Conservation Division
P. O. Box 2088
Santa Fe, New Mexico 87504-2088

Attention: R. L. Stamets
Division Director

Gentlemen:

BTA hereby requests administrative approval for Off-lease storage on the above referenced lease. Our application information sheet is attached together with a plat showing the location of the well and tank battery.

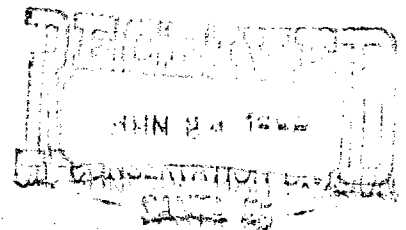
Please advise if further information is necessary.

Sincerely,

DOROTHY HOUGHTON
For BTA Oil Producers

DH:ss

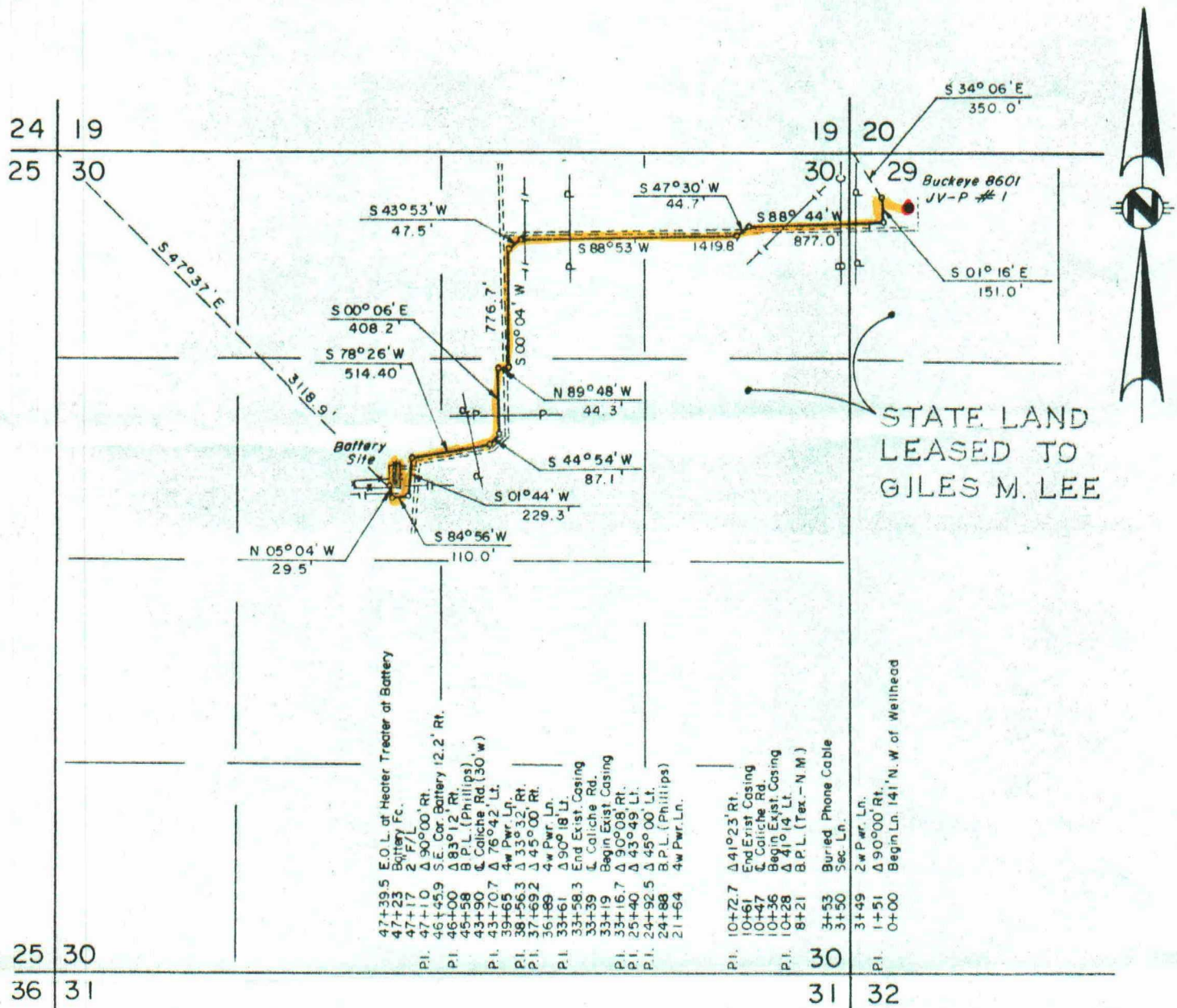
Attachments



APPLICATION FOR OFF-LEASE STORAGE

8602 JV-P Buckeye
Vacuum, Grayburg -SA-
Sec. 29, -D-, T-17-S, R-36-E
Lea County, New Mexico

1. We propose to use existing tank battery in Sec. 30, Unit letter F, T-17-S, R-36-E.
2. The production from this well will not be commingled with Abo production.
3. We will use individual separator, heater treater, and storage facilities for this production.
4. BTA owns 5/6 interest in this lease with the state owning the other 1/6.
5. We are making an application with the Commissioner of Public Lands for the State of New Mexico for easement and approval of off-lease storage.



LEGAL DESCRIPTION

A STRIP OF LAND 30.0 FEET WIDE LOCATED IN SECTIONS 29&30, TOWNSHIP 17 SOUTH, RANGE 36 EAST, N.M.P.M., LEA COUNTY, NEW MEXICO, AND BEING 15.0 FEET LEFT AND 15.0 FEET RIGHT OF THE FOLLOWING DESCRIBED SURVEY OF CENTERLINE:

BEGINNING AT A POINT, ENG. STA. 0+00, WHICH IS LOCATED S34°06'E, 350.0 FEET FROM THE NORTHWEST CORNER OF SAID SECTION 29; THENCE S01°16'E, 151.0 FEET TO ENG. STA. 1+51; THENCE S88°44'W, 877.0 FEET TO ENG. STA. 10+28; THENCE S47°30'W, 44.7 FEET TO ENG. STA. 10+72.7; THENCE S88°53'W, 1419.8 FEET TO ENG. STA. 24+92.5; THENCE S43°53'W, 47.5 FEET TO ENG. STA. 25+40; THENCE S00°04'W, 776.7 FEET TO ENG. STA. 33+16.7; THENCE N89°48'W, 44.3 FEET TO ENG. STA. 33+61; THENCE S00°06'E, 408.2 FEET TO ENG. STA. 37+69.2; THENCE S44°54'W, 87.1 FEET TO ENG. STA. 38+56.3; THENCE S78°26'W, 514.4 FEET TO ENG. STA. 43+70.7; THENCE S01°44'W, 229.3 FEET TO ENG. STA. 46+00; THENCE S84°56'W, 110.0 FEET TO ENG. STA. 47+10; THENCE N05°04'W, 29.5 FEET TO ENG. STA. 47+39.5, WHICH IS LOCATED S47°37'E, 3118.9 FEET FROM THE NORTHWEST CORNER OF SAID SECTION 30.

SAID STRIP OF LAND BEING 4739.5 FEET OR 287.24 RODS IN LENGTH AND CONTAINS 3.26 ACRES MORE OR LESS, AND IS ALLOCATED BY FORTIES AS FOLLOWS:

S/D	SEC.	TS.	RG.	RODS	ACRES
NW ¹ / ₄ NW ¹ / ₄	29	17	36	21.22	0.24
NE ¹ / ₄ NE ¹ / ₄	30	17	36	80.71	0.92
NW ¹ / ₄ NE ¹ / ₄	30	17	36	98.80	1.12
SW ¹ / ₄ NE ¹ / ₄	30	17	36	55.87	0.63
SE ¹ / ₄ NW ¹ / ₄	30	17	36	30.64	0.35

I HEREBY CERTIFY THAT THIS PLAT WAS MADE FROM NOTES TAKEN IN THE FIELD IN A BONA FIDE SURVEY MADE UNDER MY SUPERVISION, AND THAT THE SAME IS TRUE AND CORRECT TO THE BEST OF MY KNOWLEDGE AND BELIEF.

JOHN W. WEST, N.M.P.E. & L.S. No. 1883
RONALD J. EIDSON, N.M.P.E. & L.S. No. 1883

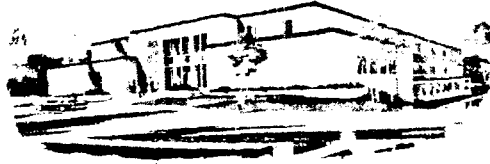
B.T.A. OIL PRODUCERS

PROPOSED PIPELINE CROSSING STATE LANDS IN SECTIONS 29&30, TOWNSHIP 17 SOUTH, RANGE 36 EAST, N.M.P.M., LEA COUNTY, NEW MEXICO.

JOHN W. WEST ENGINEERING COMPANY

CONSULTING ENGINEERS	HOBBBS, NEW MEXICO
Scale: 1"=1000'	Drawn By: C. Brown
Date: 06/17/86	Sheet 1 of 1 Sheets

State of New Mexico



JIM BACA
COMMISSIONER

Commissioner of Public Lands

July 9, 1986

P.O. BOX 1148
SANTA FE, NEW MEXICO 87504-1148

BTA Oil Producers
ATTENTION: Ms. Dorothy Houghton
104 South Pecos
Midland, Texas 79701-9988

Re: Off-Lease Storage
State Lease No. V-1688
3601 JVP Buckeye
Sec. 29, -D-, T-17S-, R-36-E
Lea County, New Mexico

Gentlemen:

Reference is made to your application dated July 2, 1986. Wherein you have requested our approval for Off-Lease Storage of production from your Buckeye 3601 JVP Well No. 1, located 330' FNL and 330 FWL (Unit D) Section 29, Township 17 South, Range 36 East, State Lease No. V-1688, Lea County, New Mexico, to be transported and stored at an existing tank battery in the SE 4NW 14 (Unit Letter F) of Section 30, Township 17 South, Range 36 East State Lease No. LG-6478.

You are hereby given approval to the above request. It is our understanding that there will be no commingling or intercommunication of production between handling, separation, treatment or storage facilities designated to each lease. It is also our understanding that you will apply for a right of way across State lands as per your telephone conversation with Mr. Dwain Glidewell of our Land Surface Division.

Your filing fee in the amount of \$30.00 has been received. If we may be of further help please do not hesitate to call on us.

Very truly yours,

JIM BACA
COMMISSIONER OF PUBLIC LANDS

BY: *Floyd O. Prando*
FLOYD O. PRANDO, Director
Oil and Gas Division
(505) 827-5744

JB/FOP/pm

encls.

cc: OCD-Santa Fe, New Mexico